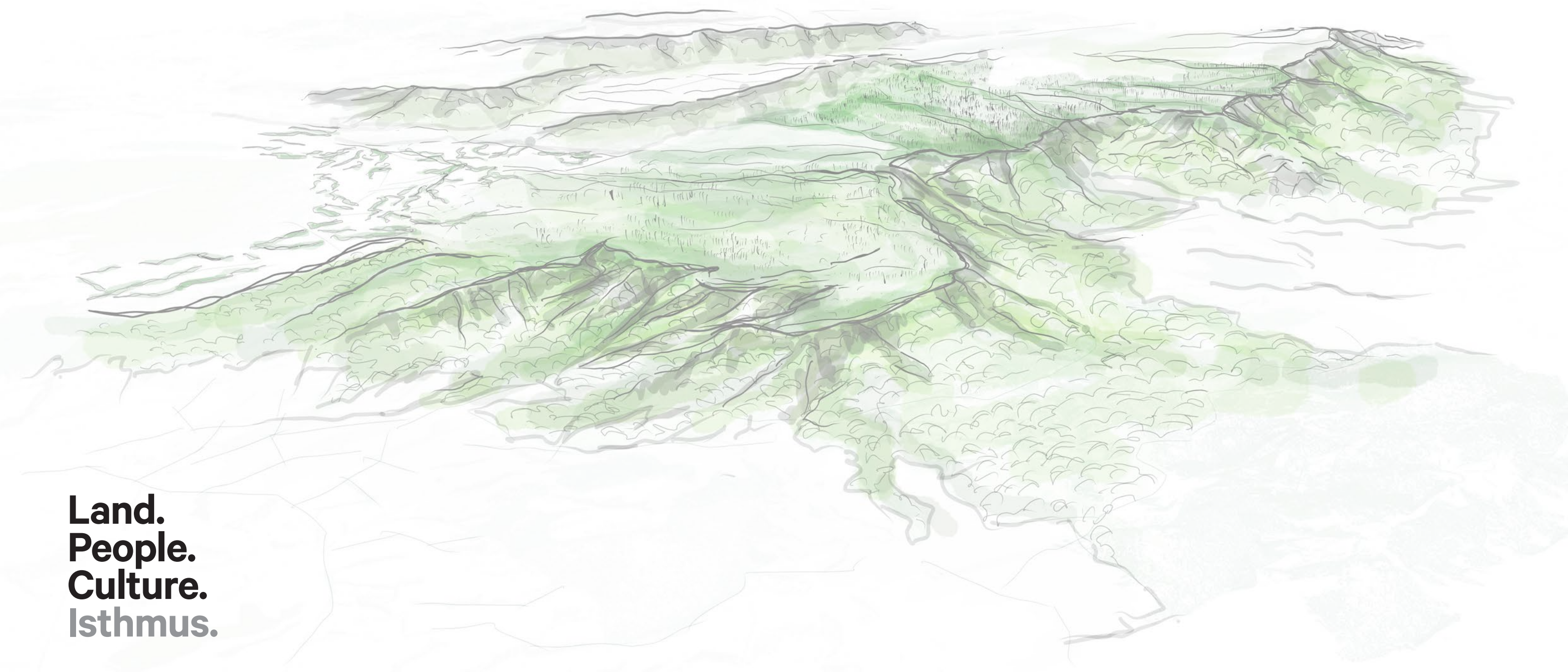


Southland Windfarm Project.
Contact Energy Ltd.
Graphic Attachments.
Rev H.

August 2025

Isthmus.



Land.
People.
Culture.
Isthmus.

Isthmus.

Document record				
Issue	Revision	Author	QA	Date
Draft	A	AE	AA	11/12/23
Final	A	AE	AA	11/12/23
Final	B	AE	AA	24/04/24
Final	C	AE	AA	29/04/24
Final	D	AE	AA	04/07/24
Final	E	AE	AA	11/09/24
Final	F	SF	AA	13/09/24
Final	G	AA	BC	21/05/25
Final	H	AA	BC	14/08/25

Contents

Figure 1 - Site Context	4
Figure 2 - Indicative Site Layout and Topographical Features	5
Figure 3 - Southland Wind Farm Site Design	6
Figure 4 - Soils - Land Use Capability	7
Figure 5 - Southland District Plan	8
Figure 6 - Archaeological Sites	9
Figure 7 - Dwelling Inventory Map	10
Figure 8 - Viewpoint Location Plan	11
Figure 9 - Viewpoint 1 - Existing	12
Figure 10 - Viewpoint 1 - Proposed	14
Figure 11 - Viewpoint 1 - Proposed - including Kaiwera Downs	16
Figure 12 - Viewpoint 2 - Existing	18
Figure 13 - Viewpoint 2 - Proposed	20
Figure 14 - Viewpoint 2 - Proposed - including Kaiwera Downs	22
Figure 15 - Viewpoint 3 - Existing	24
Figure 16 - Viewpoint 3 - Proposed	26
Figure 17 - Viewpoint 3 - Proposed - including Kaiwera Downs	28
Figure 18 - Viewpoint 4 - Existing	30
Figure 19 - Viewpoint 4 - Proposed	32
Figure 20 - Viewpoint 5 - Existing	34
Figure 21 - Viewpoint 5 - Proposed	36
Figure 22 - Viewpoint 6 - Existing	38
Figure 23 - Viewpoint 6 - Proposed	40
Figure 24 - Viewpoint 7 - Existing	42
Figure 25 - Viewpoint 7 - Proposed	44
Figure 26 - Viewpoint 8 - Existing	46
Figure 27 - Viewpoint 8 - Proposed	48
Figure 28 - Viewpoint 9 - Existing	50
Figure 29 - Viewpoint 9 - Proposed	52
Figure 30 - Viewpoint 10 - Existing	54

Figure 31 - Viewpoint 10 - Proposed	56
Figure 32 - Viewpoint 11 - Existing	58
Figure 33 - Viewpoint 11 - Proposed	60
Figure 34 - Viewpoint 12 - Existing	62
Figure 35 - Viewpoint 12 - Proposed	64
Figure 36 - Viewpoint 13 - Existing	66
Figure 37 - Viewpoint 13 - Proposed	68
Figure 37 - Viewpoint 14 - Existing - context	70
Figure 38 - Viewpoint 15 - Existing - context	72
Figure 39 - Viewpoint 16 - Existing - context	74
Figure 40 - Context Map	76
Figure 41 - Local Context Map	77
Figure 42 - Escarpment Edge & Property Boundary with Contour Base Map	78
Figure 43 - Turbine Locations - Jedburgh Station Plateau	79
Figure 44 - Turbine Locations - Matariki Forest	80
Visual Simulation Methodology	83

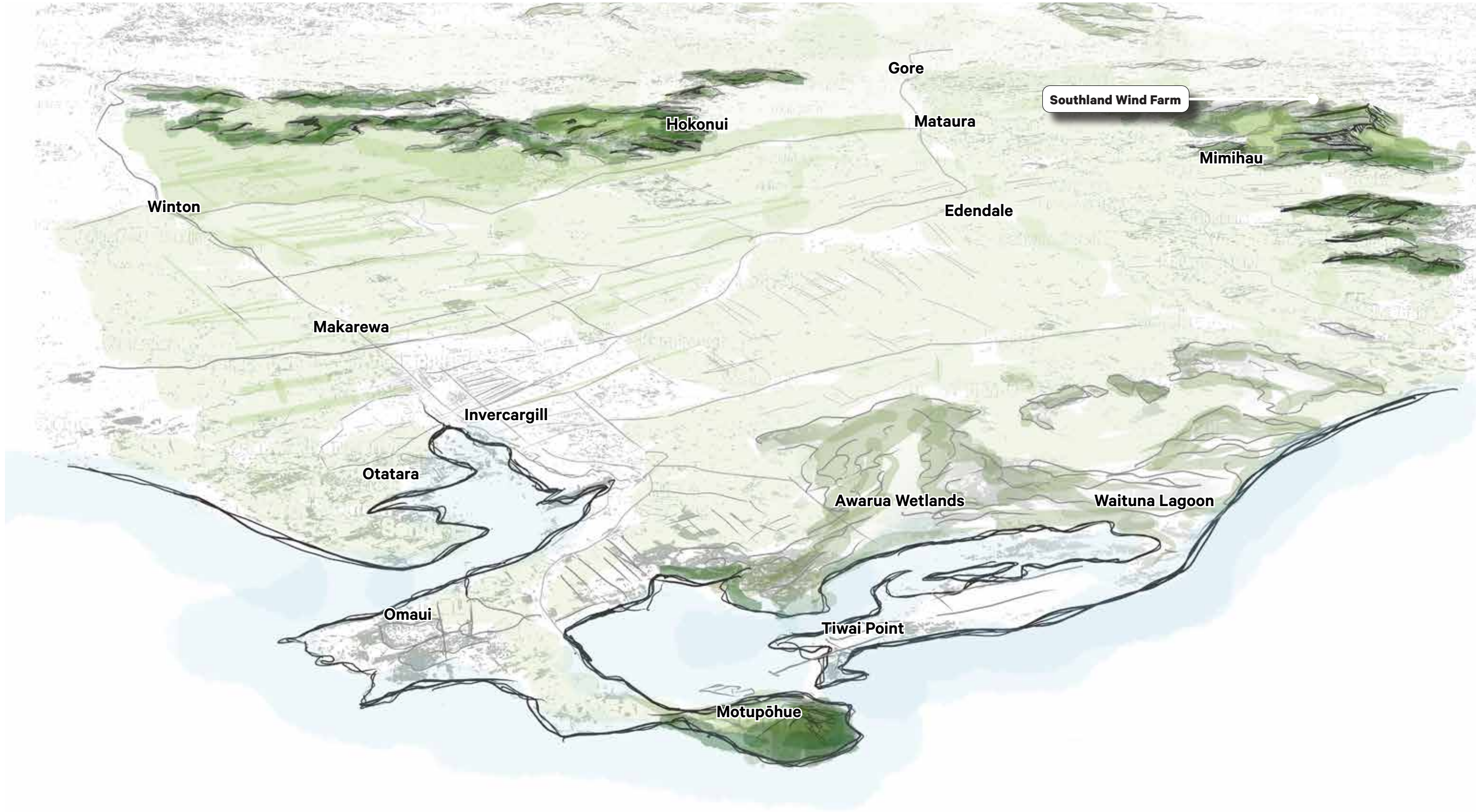


Figure 1 - Site Context

Scale: Not to Scale
Drawing no. SK01
Produced: Isthmus Group Ltd.
Basemap Source: Google Earth

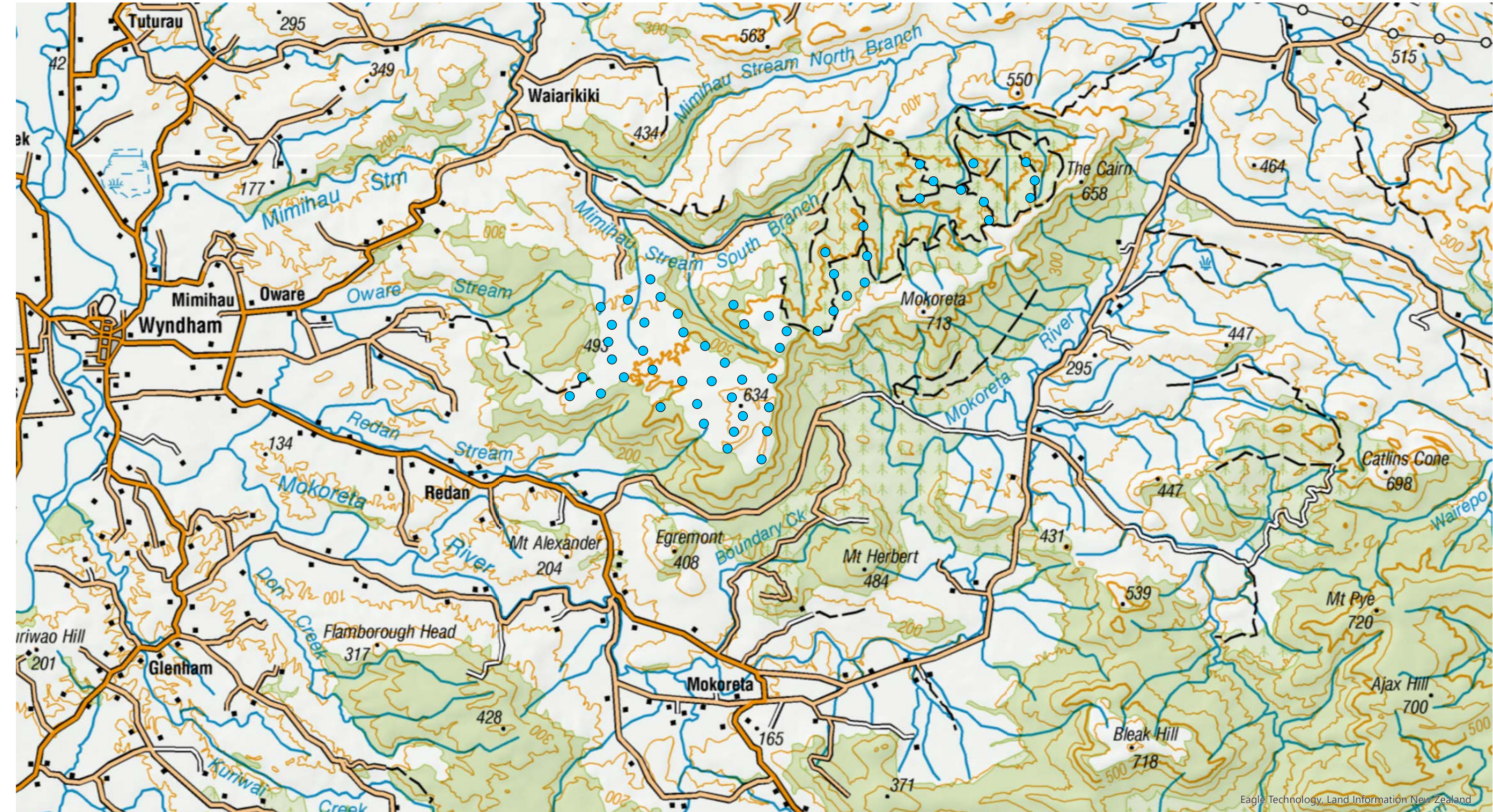


Figure 2 - Indicative Site Layout and Topographical Features

Scale: 1:125,000 @ A3
Drawing no. SK02
Produced: Isthmus Group Ltd.
Basemap Source: Land Information New Zealand (Eagle Technology)

- LEGEND:**
- Indicative SWF turbine location
 - Road Network
 - River/Waterway
 - Contour Lines (100m)
 - Elevation in metres



0km 2km 4km 10km
1:125,000 @ A3

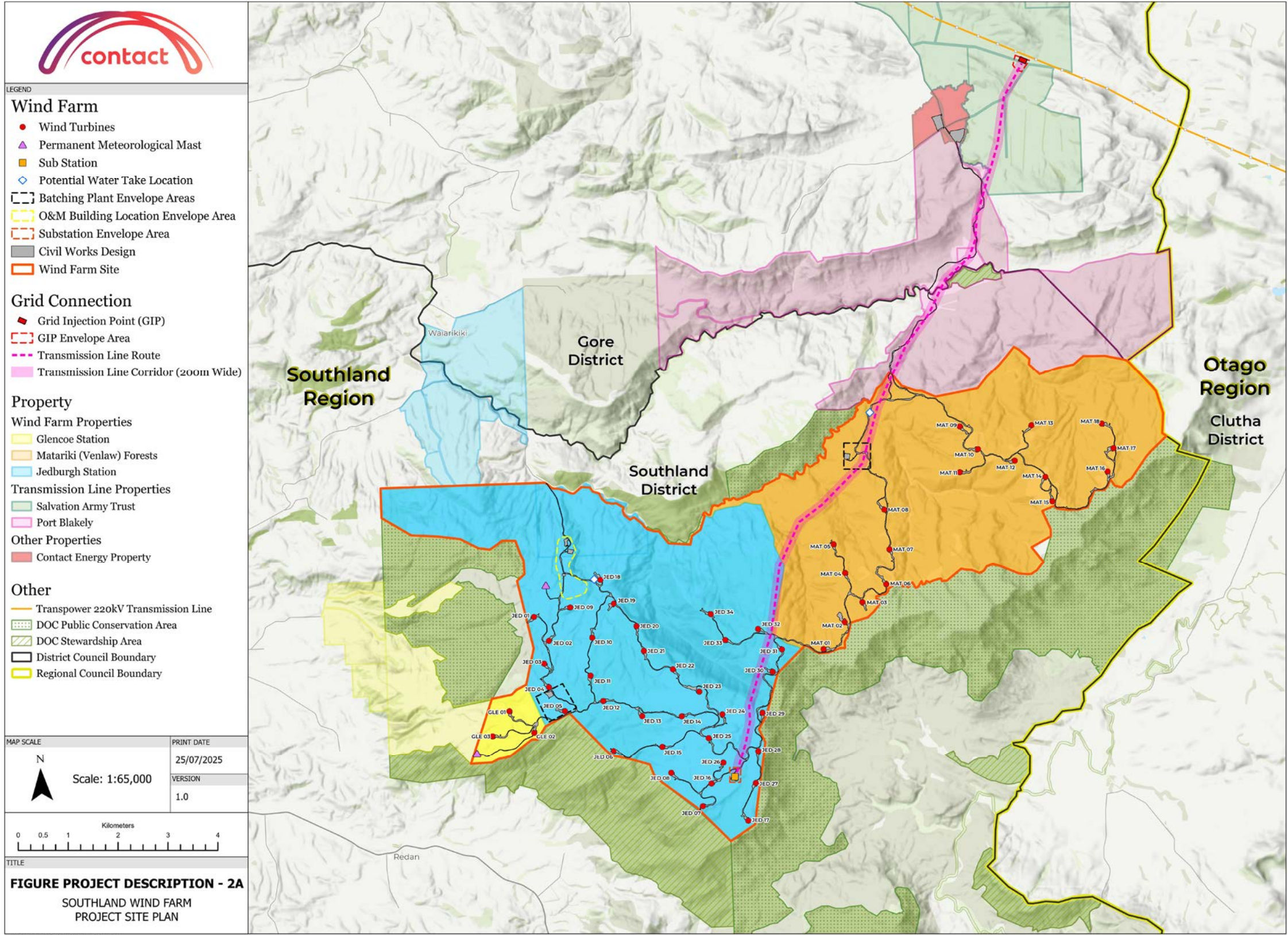


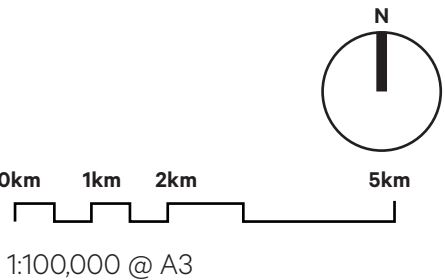
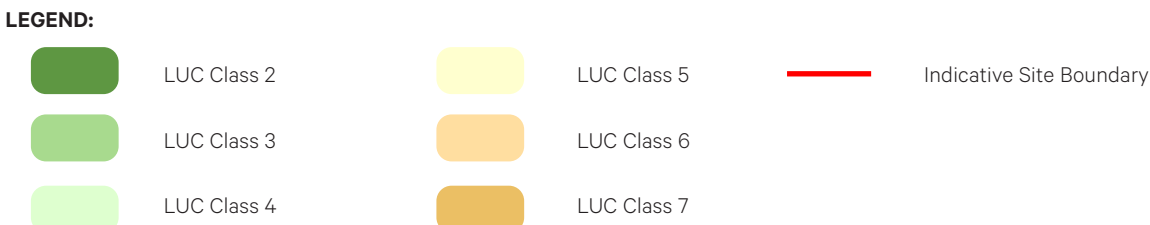
Figure 3 - Southland Wind Farm Project Site Design

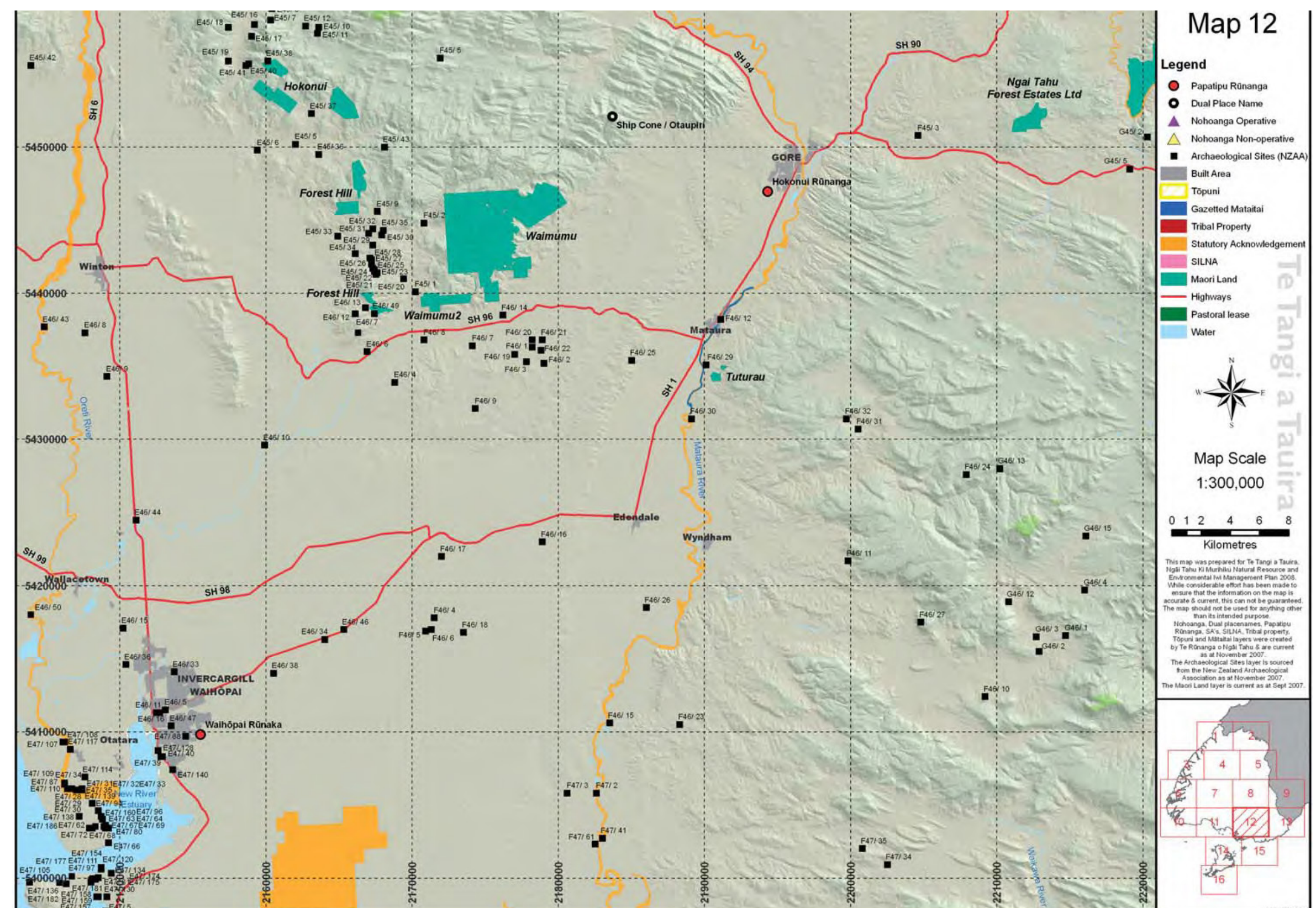
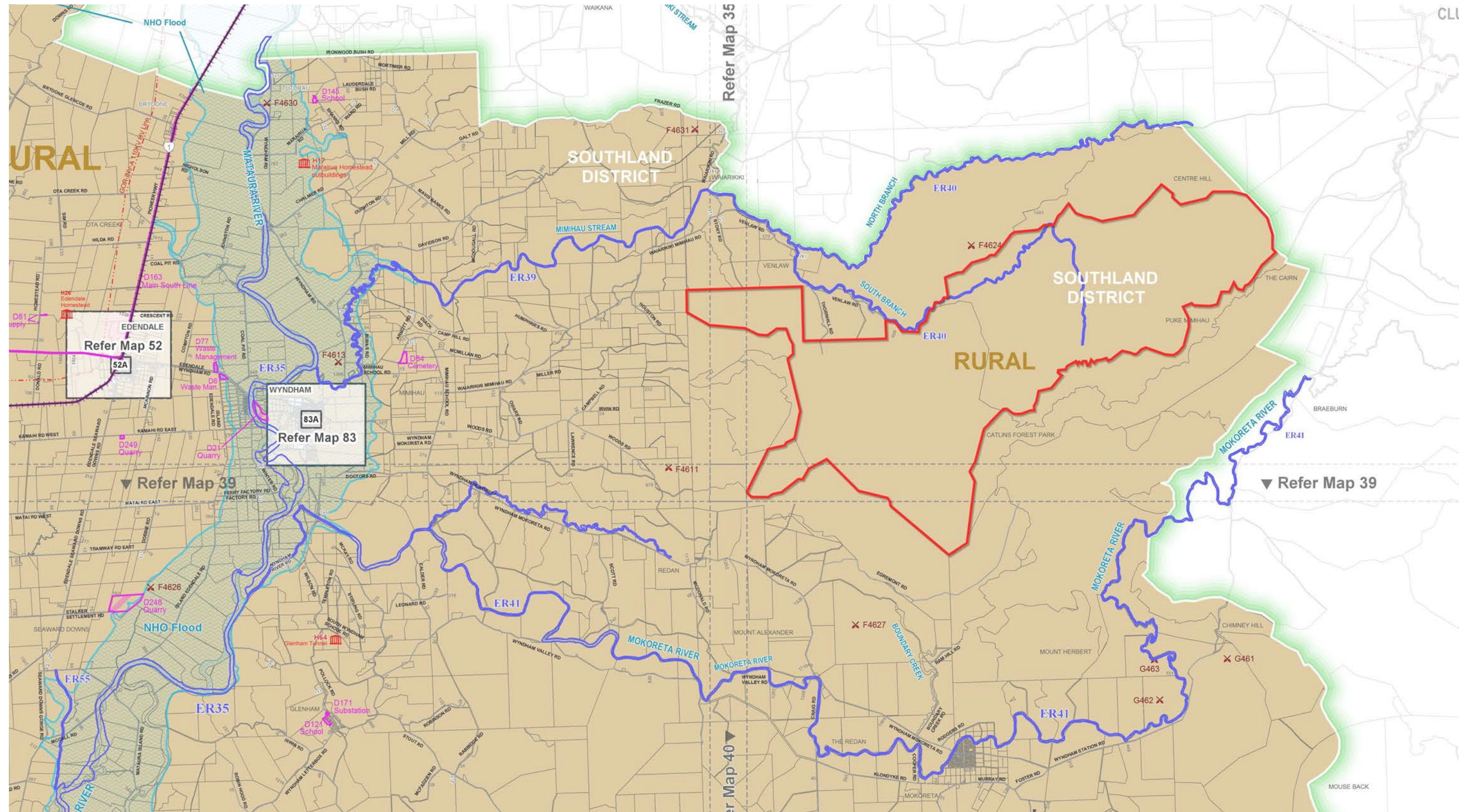
Scale: NTS
Drawing no. SK03
Produced: Contact Energy



Figure 4 - Soils - Land Use Capability

Scale: 1:100,000
Drawing no. SK04
Produced: Isthmus Group Ltd.
Basemap Source: Manaaki Whenua Landcare Research.





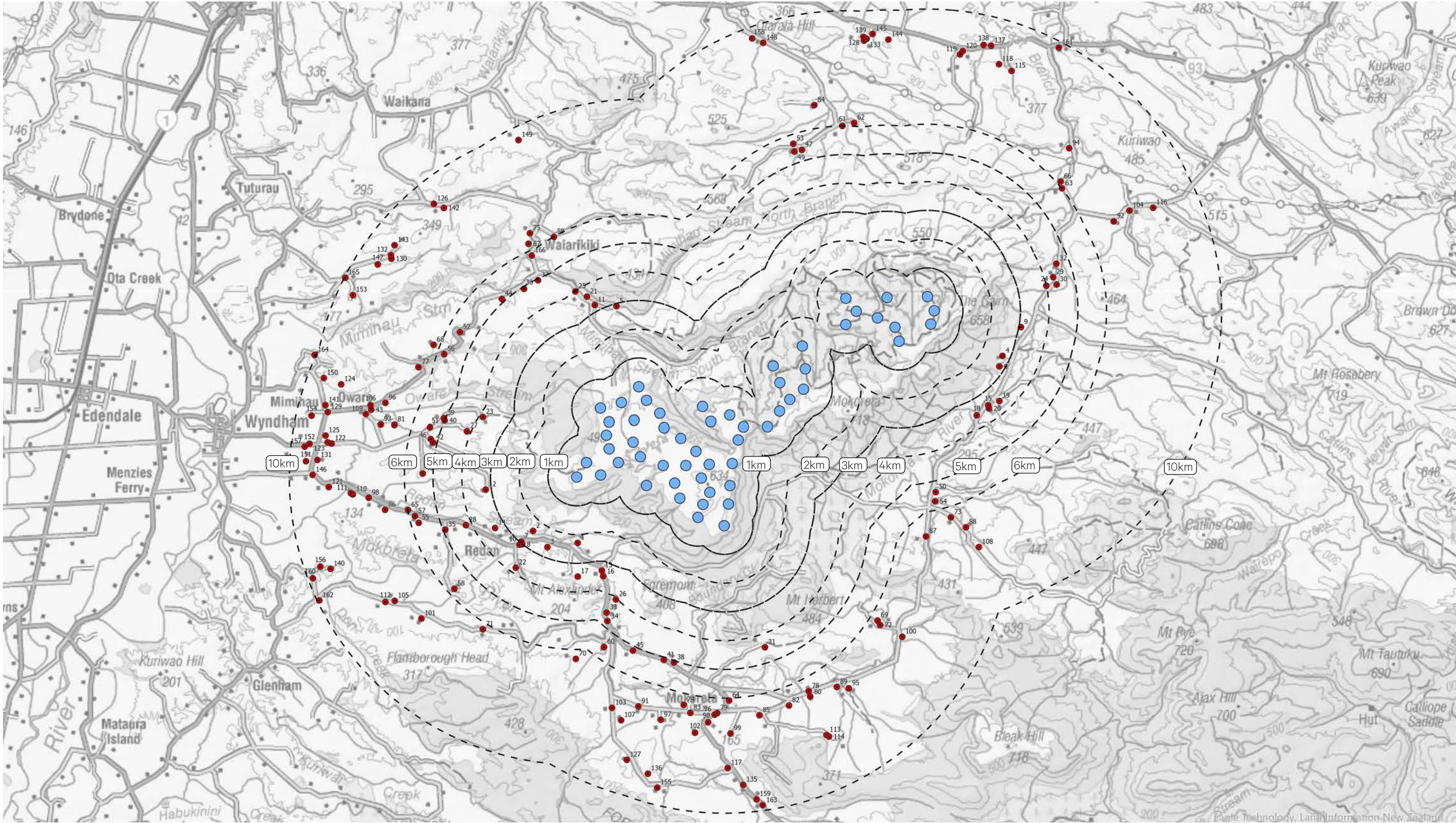


Figure 7 - Dwelling Inventory Map

Scale: 1:130,000 @ A3
 Drawing no. SK07
 Produced: Isthmus Group Ltd.
 Basemap Source: Land Information New Zealand (Eagle Technology)

- LEGEND:**
- Indicative SWF turbine location
 - Dwelling - with reference number
 - Distance from closest turbine

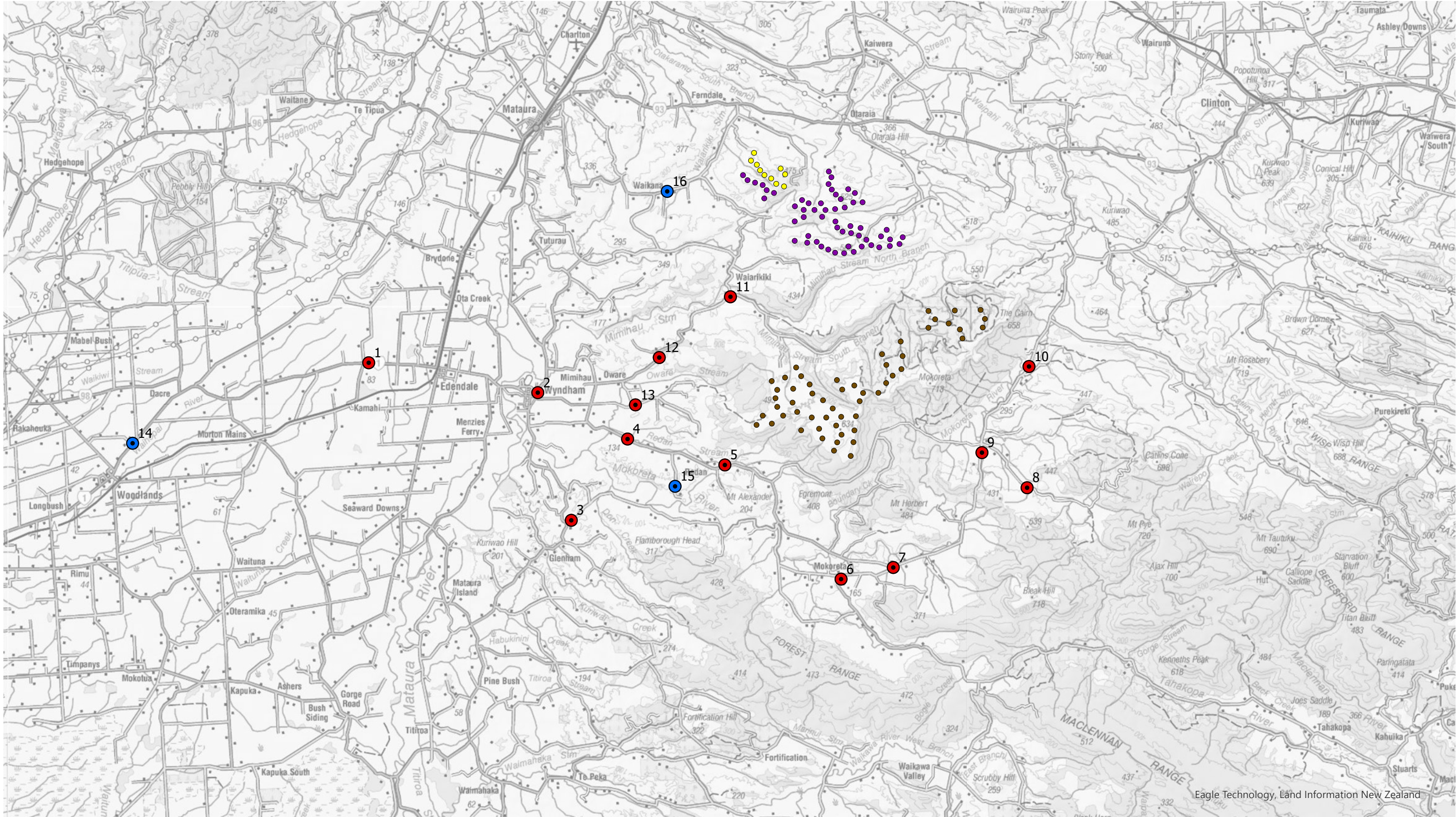
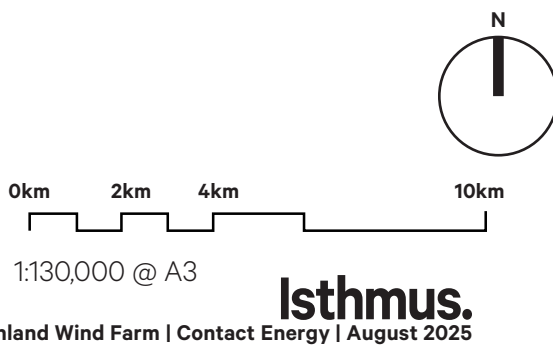


Figure 8 - Viewpoint Location Plan

Scale: 1:200,000 @ A3
 Drawing no. SK08
 Produced: Isthmus Group Ltd.
 Basemap Source: Arc GIS

- LEGEND:**
- Turbine Layout 23 November
 - Kaiwera Downs Wind Farm (Stage 1) Turbines (under construction)
 - Kaiwera Downs Wind Farm Consented Layout July 2023
 - Context Photo Location
 - Simulation Photo Location

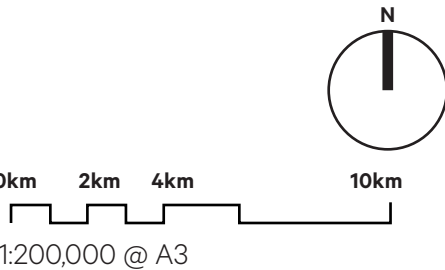
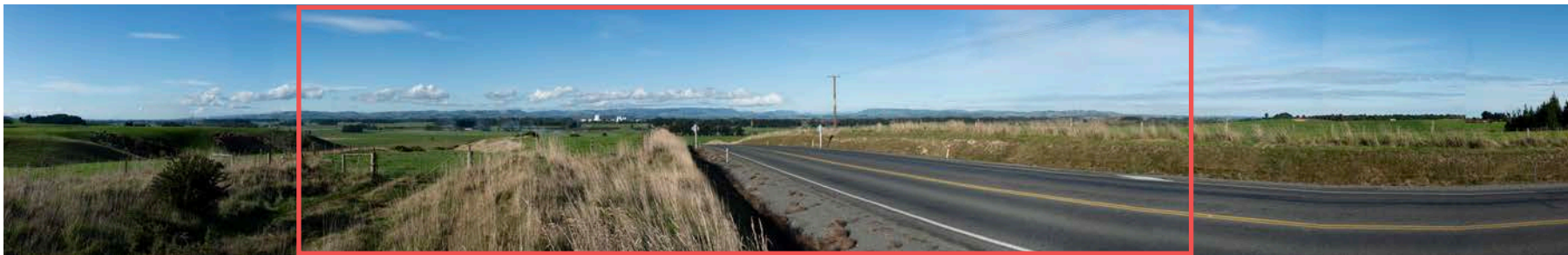




Figure 9 -Viewpoint 1 - Existing

Edendale - Woodlands Highway (SH1), near intersection with Scenic Reserve Road



Isthmus.
Southland Wind Farm | Contact Energy | August 2025



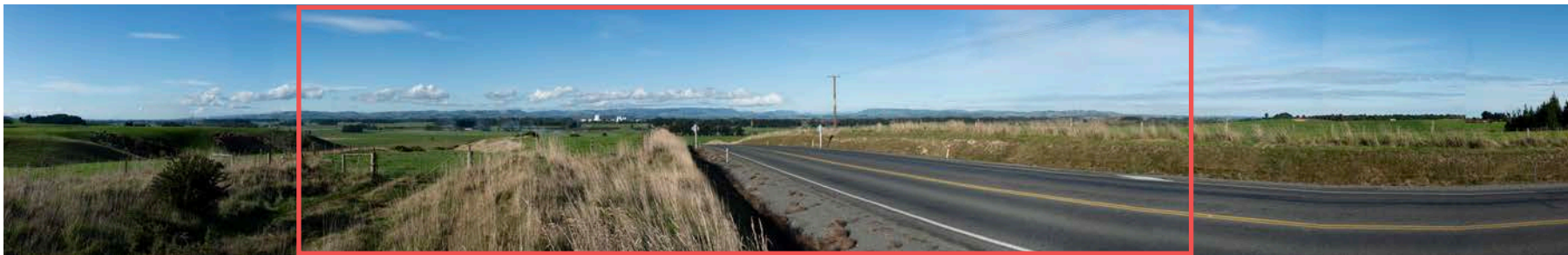
Isthmus.
Southland Wind Farm | Contact Energy | August 2025

Original Photo AE | 50mm | DSLR Nikon D810 | 1408hrs 04 May 2023 | 1271643E 4862959N (NZTM)
Reading distance for correct scale: 400mm | Viewpoint Elevation: Approx 80m
Field of View Approximately 110° horizontal (across 2 x A3 pages) & 34° vertical



Figure 10 - Viewpoint 1 - Proposed

Edendale - Woodlands Highway (SH1), near intersection with Scenic Reserve Road



Isthmus.
Southland Wind Farm | Contact Energy | August 2025



Isthmus.
Southland Wind Farm | Contact Energy | August 2025

Original Photo AE | 50mm | DSLR Nikon D810 | 14:08hrs 04 May 2023 | 1271643E 4862959N (NZTM)
Reading distance for correct scale: 400mm | Viewpoint Elevation: Approx 80m
Field of View Approximately 110° horizontal (across 2 x A3 pages) & 34° vertical



Figure 11 - Viewpoint 1 - Proposed

Including the Kaiwera Downs wind farm as consented July 2023

Edendale - Woodlands Highway (SH1), near intersection with Scenic Reserve Road

16



Isthmus.
Southland Wind Farm | Contact Energy | August 2025



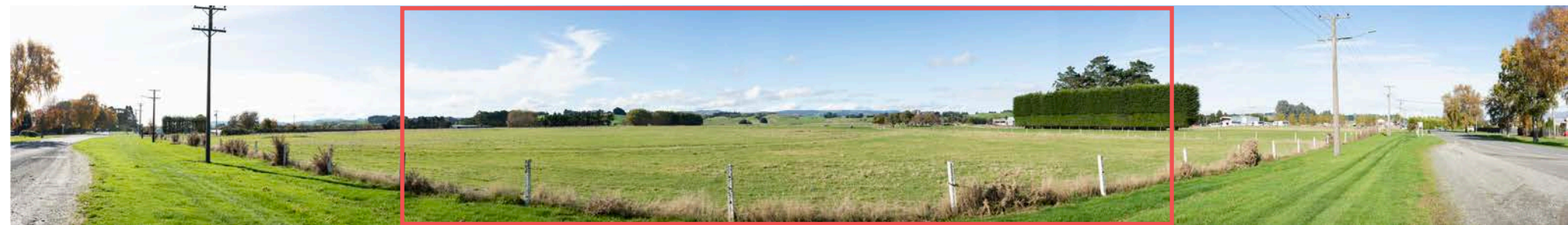
Isthmus.
Southland Wind Farm | Contact Energy | August 2025

Original Photo AE | 50mm | DSLR Nikon D810 | 1408hrs 04 May 2023 | 1271643E 4862959N (NZTM)
Reading distance for correct scale: 400mm | Viewpoint Elevation: Approx 80m
Field of View Approximately 110 ° horizontal (across 2 x A3 pages) & 34 ° vertical
Kaiwera Downs layout from Mercury Energy Consent, 2023
Depicts Kaiwera Downs consented layout 2023 including Stage 1 turbines currently under construction



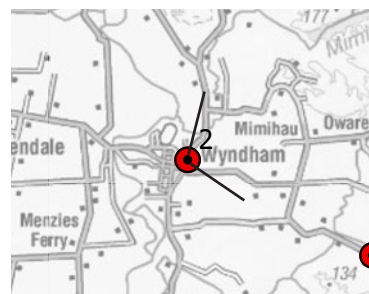
Figure 12 - Viewpoint 2 - Existing

Cardigan Road, Wyndham



Isthmus.

Southland Wind Farm | Contact Energy | August 2025



Isthmus.

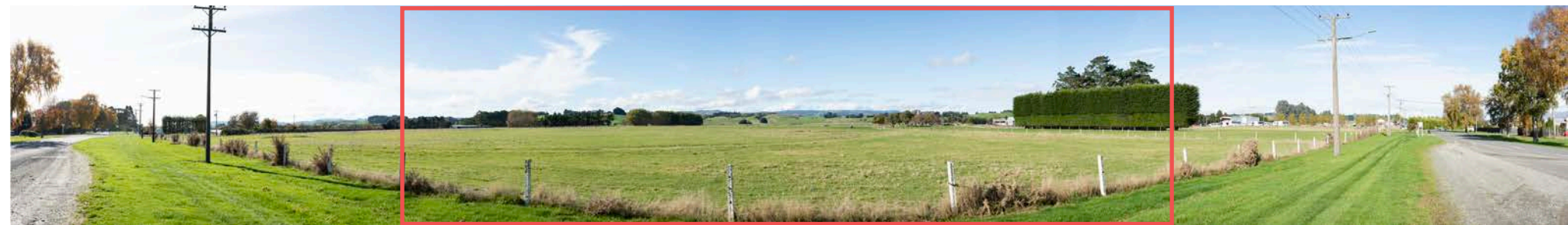
Southland Wind Farm | Contact Energy | August 2025

Original Photo AE | 50mm | DSLR Nikon D810 | 1218hrs 04 May 2023 | 1280858E 4861332N (NZTM)
 Reading distance for correct scale: 400mm | Viewpoint Elevation: Approx 31m
 Field of View Approximately 110° horizontal (across 2 x A3 pages) & 34° vertical



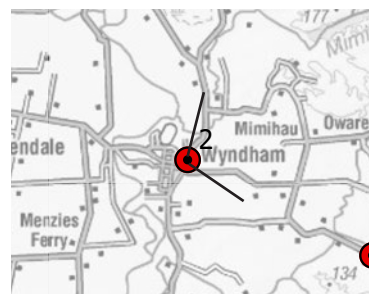
Figure 13 - Viewpoint 2 - Proposed

Cardigan Road, Wyndham



Isthmus.

Southland Wind Farm | Contact Energy | August 2025



Isthmus.

Southland Wind Farm | Contact Energy | August 2025

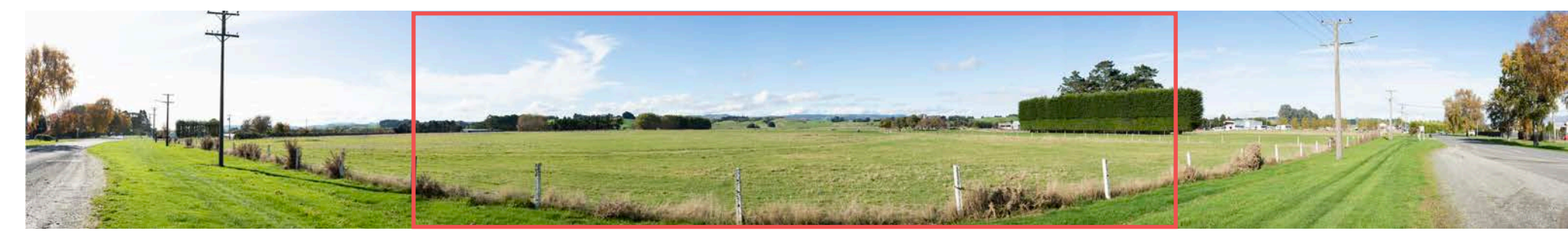
Original Photo AE | 50mm | DSLR Nikon D810 | 1218hrs 04 May 2023 | 1280858E 4861332N (NZTM)
 Reading distance for correct scale: 400mm | Viewpoint Elevation: Approx 31m
 Field of View Approximately 110° horizontal (across 2 x A3 pages) & 34° vertical



Kaiwera Downs turbines

Figure 14 - Viewpoint 2 - Proposed

Including the Kaiwera Downs wind farm as consented July 2023

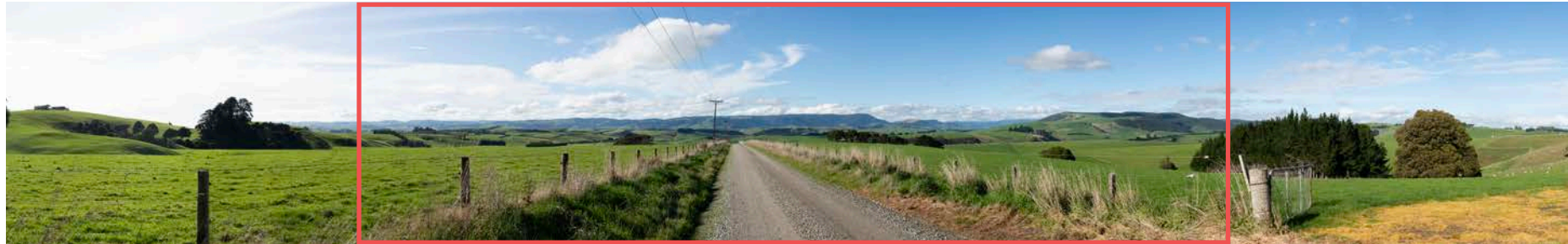


Original Photo AE | 50mm | DSLR Nikon D810 | 1218hrs 04 May 2023 | 1280858E 4861332N (NZTM)
Reading distance for correct scale: 400mm | Viewpoint Elevation: Approx 31m
Field of View Approximately 110 ° horizontal (across 2 x A3 pages) & 34 ° vertical
Kaiwera Downs layout from Mercury Energy Consent, 2023
Depicts Kaiwera Downs consented layout 2023 including Stage 1 turbines currently under construction



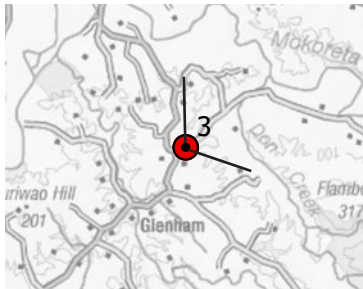
Figure 15 - Viewpoint 3 - Existing

Wyndham Valley Road, near intersection with Wyndham – Letterbox Road



Isthmus.

Southland Wind Farm | Contact Energy | August 2025



Isthmus.

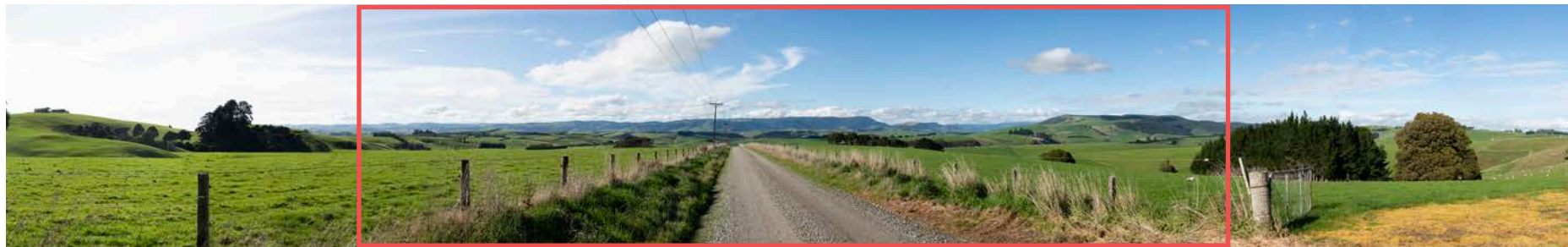
Southland Wind Farm | Contact Energy | August 2025

Original Photo AE | 50mm | DSLR Nikon D810 | 1228hrs 04 May 2023 | 1282683E 4854376N (NZTM)
 Reading distance for correct scale: 400mm | Viewpoint Elevation: Approx 135m
 Field of View Approximately 110° horizontal (across 2 x A3 pages) & 34° vertical

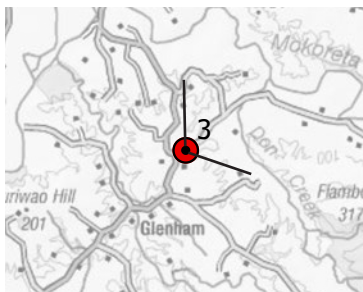


Figure 16 - Viewpoint 3 - Proposed

Wyndham Valley Road, near intersection with Wyndham – Letterbox Road



Isthmus.
Southland Wind Farm | Contact Energy | August 2025



Isthmus.
Southland Wind Farm | Contact Energy | August 2025

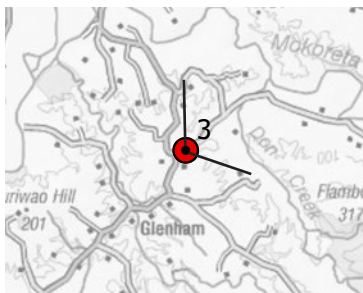
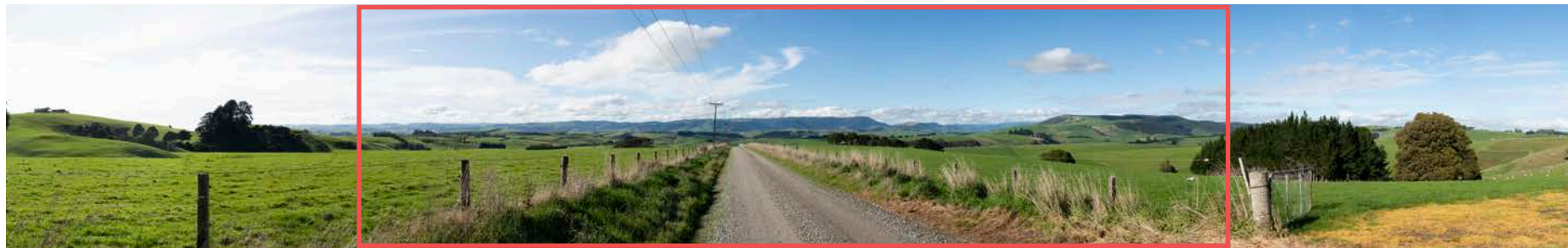
Original Photo AE | 50mm | DSLR Nikon D810 | 1228hrs 04 May 2023 | 1282683E 4854376N (NZTM)
Reading distance for correct scale: 400mm | Viewpoint Elevation: Approx 135m
Field of View Approximately 110° horizontal (across 2 x A3 pages) & 34° vertical



Figure 17 - Viewpoint 3 - Proposed

Including the Kaiwera Downs wind farm as consented July 2023

Wyndham Valley Road, near intersection with Wyndham – Letterbox Road

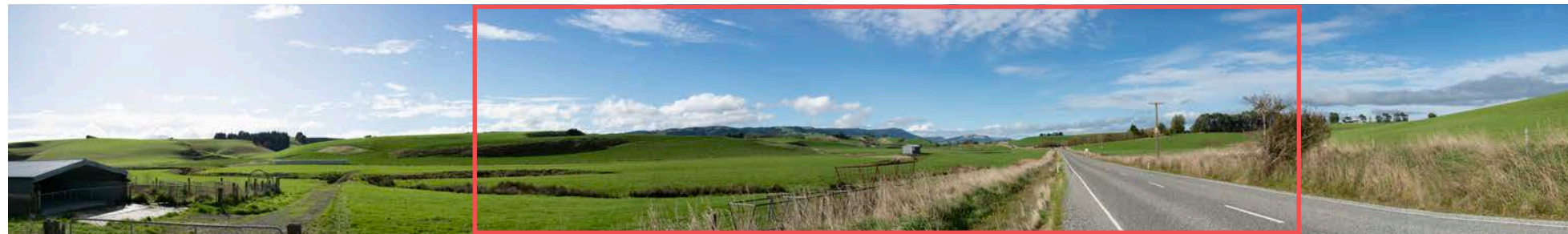


Original Photo AE | 50mm | DSLR Nikon D810 | 1228hrs 04 May 2023 | 1282683E 4854376N (NZTM)
Reading distance for correct scale: 400mm | Viewpoint Elevation: Approx 135m
Field of View Approximately 110 ° horizontal (across 2 x A3 pages) & 34 ° vertical
Kaiwera Downs layout from Mercury Energy Consent, 2023
Depicts Kaiwera Downs consented layout 2023 including Stage 1 turbines currently under construction

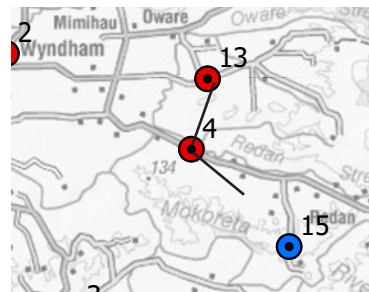


Figure 18 - Viewpoint 4 - Existing

Wyndham - Mokoreta Road, near Rapid No. 642



Isthmus.
Southland Wind Farm | Contact Energy | August 2025



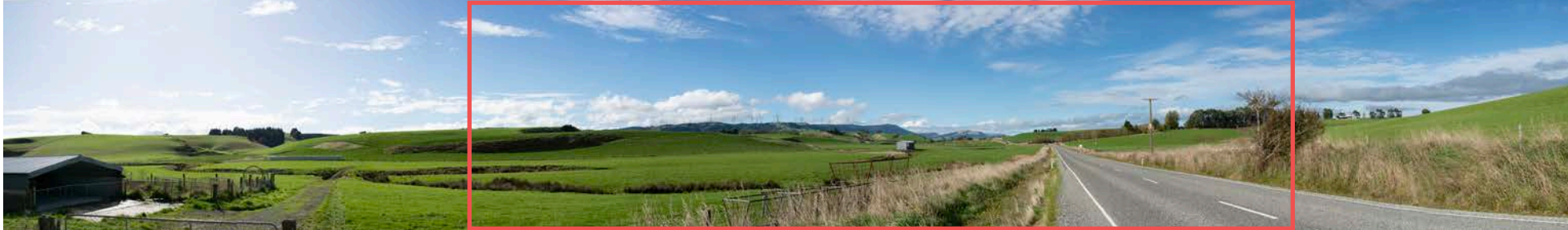
Isthmus.
Southland Wind Farm | Contact Energy | August 2025

Original Photo AE | 50mm | DSLR Nikon D810 | 1126hrs 04 May 2023 | 1285751E 4858804N (NZTM)
Reading distance for correct scale: 400mm | Viewpoint Elevation: Approx 45m
Field of View Approximately 110° horizontal (across 2 x A3 pages) & 34° vertical



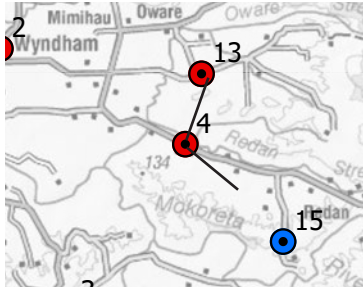
Figure 19 - Viewpoint 4 - Proposed

Wyndham - Mokoreta Road, near Rapid No. 642



Isthmus.

Southland Wind Farm | Contact Energy | August 2025



Isthmus.

Southland Wind Farm | Contact Energy | August 2025

Original Photo AE | 50mm | DSLR Nikon D810 | 1126hrs 04 May 2023 | 1285751E 4858804N (NZTM)
 Reading distance for correct scale: 400mm | Viewpoint Elevation: Approx 45m
 Field of View Approximately 110° horizontal (across 2 x A3 pages) & 34° vertical



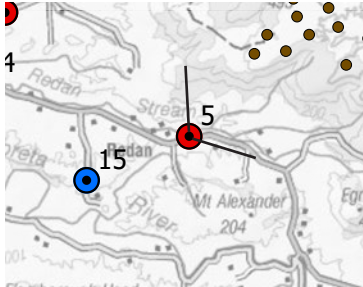
Figure 20 - Viewpoint 5 - Existing

Wyndham - Mokoreta Road, near Rapid No. 1232



Isthmus.

Southland Wind Farm | Contact Energy | August 2025



Isthmus.

Southland Wind Farm | Contact Energy | August 2025

Original Photo AE | 50mm | DSLR Nikon D810 | 1103hrs 04 May 2023 | 1291052E 4857391N (NZTM)
 Reading distance for correct scale: 400mm | Viewpoint Elevation: Approx 78m
 Field of View Approximately 110° horizontal (across 2 x A3 pages) & 34° vertical

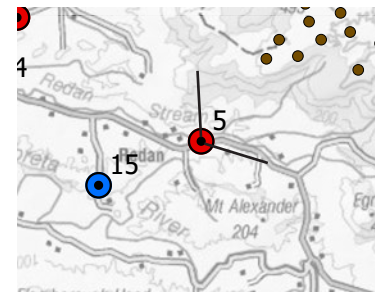


Figure 21 - Viewpoint 5 - Proposed

Wyndham - Mokoreta Road, near Rapid No. 1232



Isthmus.
Southland Wind Farm | Contact Energy | August 2025



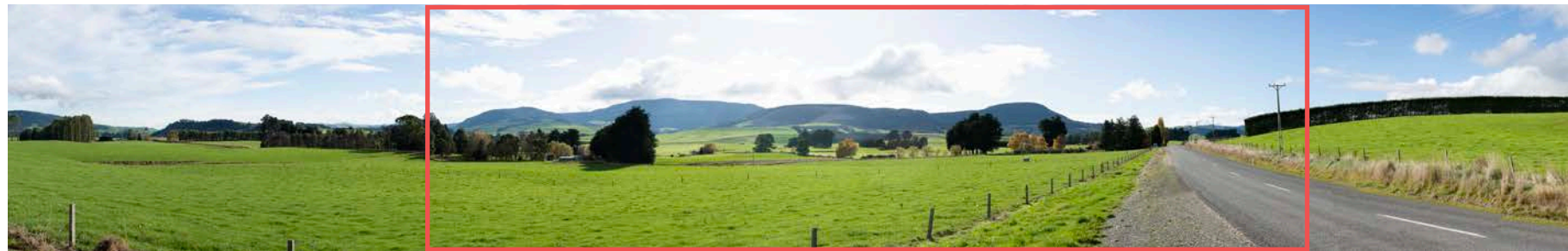
Isthmus.
Southland Wind Farm | Contact Energy | August 2025

Original Photo AE | 50mm | DSLR Nikon D810 | 1103hrs 04 May 2023 | 1291052E 4857391N (NZTM)
Reading distance for correct scale: 400mm | Viewpoint Elevation: Approx 78m
Field of View Approximately 110° horizontal (across 2 x A3 pages) & 34° vertical



Figure 22 - Viewpoint 6 - Existing

Mokoreta - Tahakopa Road, near Rapid No. 51



Isthmus.
Southland Wind Farm | Contact Energy | August 2025



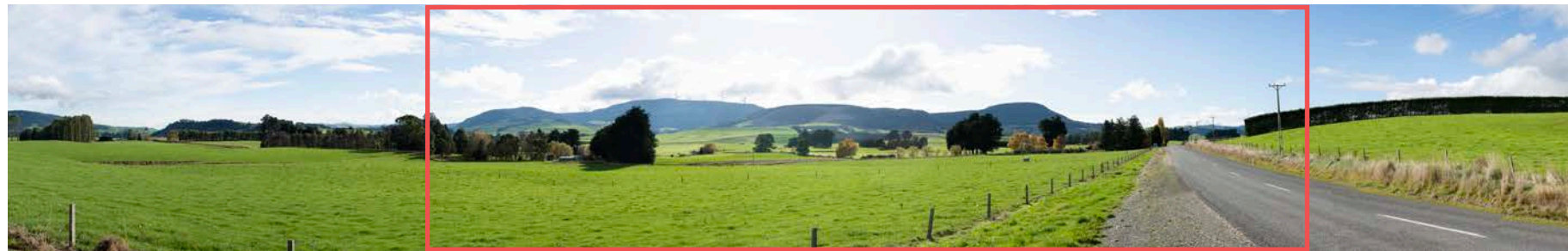
Isthmus.
Southland Wind Farm | Contact Energy | August 2025

Original Photo AE | 50mm | DSLR Nikon D810 | 1049hrs 04 May 2023 | 1297385E 4851172N (NZTM)
Reading distance for correct scale: 400mm | Viewpoint Elevation: Approx 102m
Field of View Approximately 110° horizontal (across 2 x A3 pages) & 34° vertical



Figure 23 - Viewpoint 6 - Proposed

Mokoreta - Tahakopa Road, near Rapid No. 51



Isthmus.
Southland Wind Farm | Contact Energy | August 2025



Isthmus.
Southland Wind Farm | Contact Energy | August 2025

Original Photo AE | 50mm | DSLR Nikon D810 | 1049hrs 04 May 2023 | 1297385E 4851172N (NZTM)
Reading distance for correct scale: 400mm | Viewpoint Elevation: Approx 102m
Field of View Approximately 110° horizontal (across 2 x A3 pages) & 34° vertical



Figure 24 - Viewpoint 7 - Existing

Corner of Wyndham Station Road and Foster Road



Isthmus.
Southland Wind Farm | Contact Energy | August 2025



Isthmus.
Southland Wind Farm | Contact Energy | August 2025

Original Photo AE | 50mm | DSLR Nikon D810 | 0959hrs 04 May 2023 | 1300230E 4851806N (NZTM)
Reading distance for correct scale: 400mm | Viewpoint Elevation: Approx 108m
Field of View Approximately 110° horizontal (across 2 x A3 pages) & 34° vertical



Figure 25 - Viewpoint 7 - Proposed

Corner of Wyndham Station Road and Foster Road



Isthmus.
Southland Wind Farm | Contact Energy | August 2025



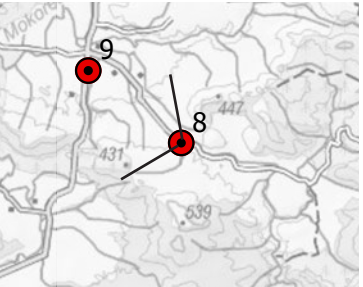
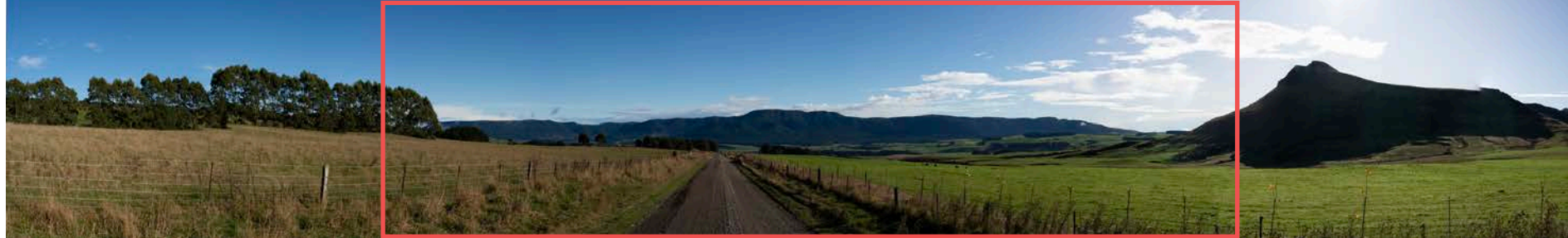
Isthmus.
Southland Wind Farm | Contact Energy | August 2025

Original Photo AE | 50mm | DSLR Nikon D810 | 0959hrs 04 May 2023 | 1300230E 4851806N (NZTM)
Reading distance for correct scale: 400mm | Viewpoint Elevation: Approx 108m
Field of View Approximately 110° horizontal (across 2 x A3 pages) & 34° vertical



Figure 38 - Viewpoint 8 - Existing

Top of Morven Road

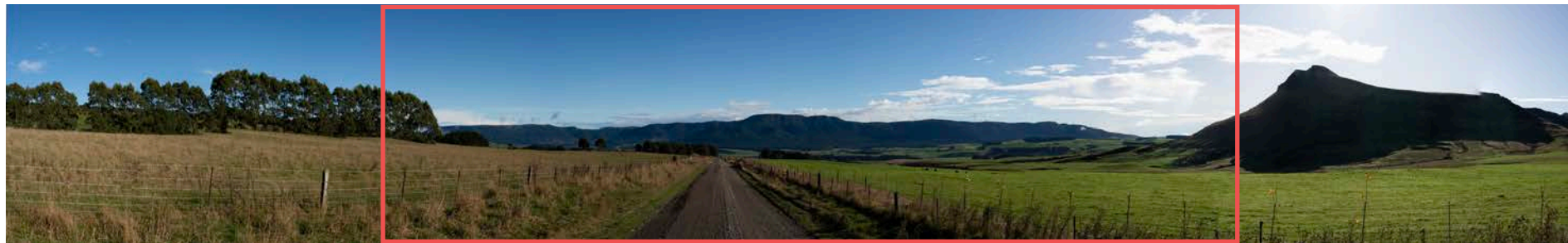


Original Photo AE | 50mm | DSLR Nikon D810 | 0931hrs 04 May 2023 | 1307522E 4856151N (NZTM)
Reading distance for correct scale: 400mm | Viewpoint Elevation: Approx 295m
Field of View Approximately 110° horizontal (across 2 x A3 pages) & 34° vertical

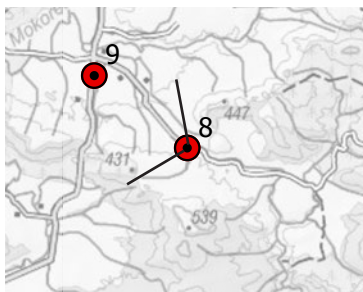


Figure 38 - Viewpoint 8 - Proposed

Top of Morven Road



Isthmus.
Southland Wind Farm | Contact Energy | August 2025



Isthmus.
Southland Wind Farm | Contact Energy | August 2025

Original Photo AE | 50mm | DSLR Nikon D810 | 0931hrs 04 May 2023 | 1307522E 4856151N (NZTM)
Reading distance for correct scale: 400mm | Viewpoint Elevation: Approx 295m
Field of View Approximately 110° horizontal (across 2 x A3 pages) & 34° vertical



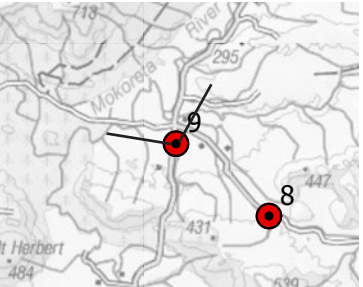
Figure 26 - Viewpoint 9 - Existing

Wyndham Station Road close to intersection with Morven Road



Isthmus.

Southland Wind Farm | Contact Energy | August 2025



Isthmus.

Southland Wind Farm | Contact Energy | August 2025

Original Photo AE | 50mm | DSLR Nikon D810 | 0939hrs 04 May 2023 | 1305063E 4858063N (NZTM)
 Reading distance for correct scale: 400mm | Viewpoint Elevation: Approx 160m
 Field of View Approximately 110° horizontal (across 2 x A3 pages) & 34° vertical

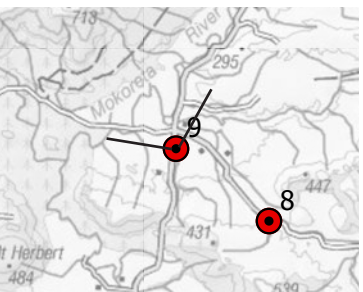


Figure 27 - Viewpoint 9 - Proposed

Wyndham Station Road close to intersection with Morven Road



Isthmus.
Southland Wind Farm | Contact Energy | August 2025



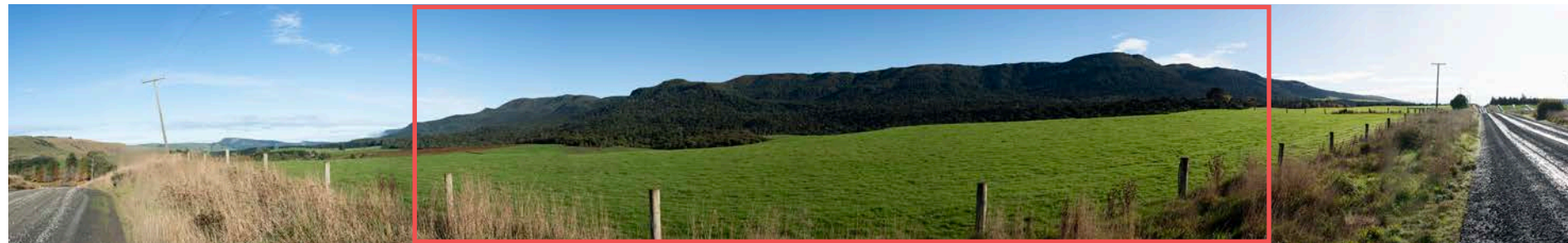
Isthmus.
Southland Wind Farm | Contact Energy | August 2025

Original Photo AE | 50mm | DSLR Nikon D810 | 0939hrs 04 May 2023 | 1305063E 4858063N (NZTM)
Reading distance for correct scale: 400mm | Viewpoint Elevation: Approx 160m
Field of View Approximately 110° horizontal (across 2 x A3 pages) & 34° vertical

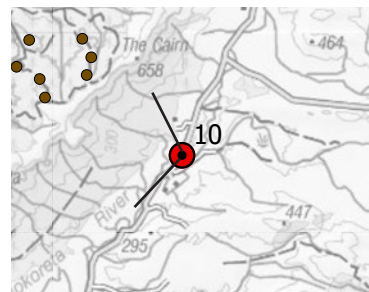


Figure 28 - Viewpoint 10 - Existing

Slopedown Road, near Rapid No. 1382



Isthmus.
Southland Wind Farm | Contact Energy | August 2025



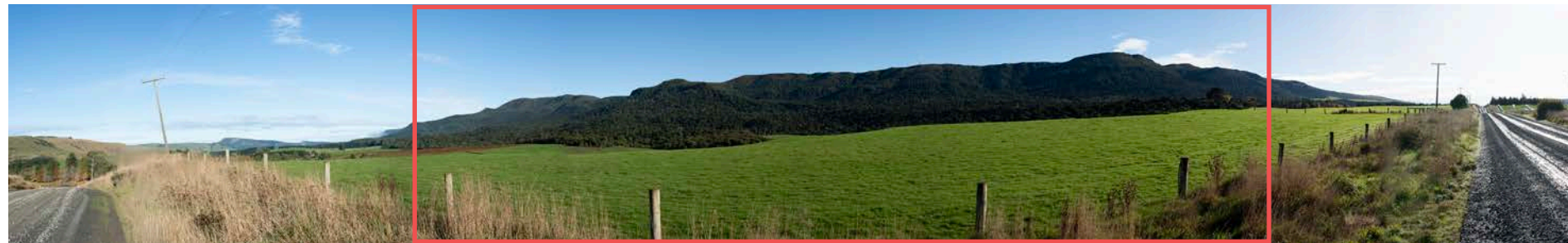
Isthmus.
Southland Wind Farm | Contact Energy | August 2025

Original Photo AE | 50mm | DSLR Nikon D810 | 0911hrs 04 May 2023 | 1307626E 4862756N (NZTM)
Reading distance for correct scale: 400mm | Viewpoint Elevation: Approx 190m
Field of View Approximately 110° horizontal (across 2 x A3 pages) & 34° vertical

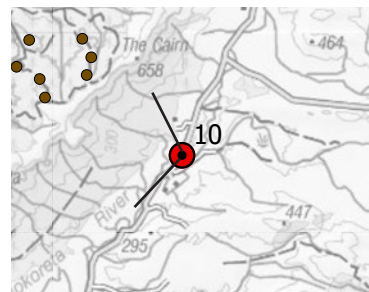


Figure 29 - Viewpoint 10 - Proposed

Slopedown Road, near Rapid No. 1382



Isthmus.
Southland Wind Farm | Contact Energy | August 2025



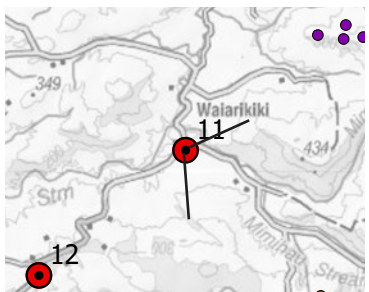
Isthmus.
Southland Wind Farm | Contact Energy | August 2025

Original Photo AE | 50mm | DSLR Nikon D810 | 0911hrs 04 May 2023 | 1307626E 4862756N (NZTM)
Reading distance for correct scale: 400mm | Viewpoint Elevation: Approx 190m
Field of View Approximately 110° horizontal (across 2 x A3 pages) & 34° vertical



Figure 30 - Viewpoint 11 - Existing

Corner of Waiarikiki Mimihau Road and Venlaw Road



Original Photo AE | 50mm | DSLR Nikon D810 | 1204hrs 04 May 2023 | 1291357E 4866555N (NZTM)
Reading distance for correct scale: 400mm | Viewpoint Elevation: Approx 107m
Field of View Approximately 110° horizontal (across 2 x A3 pages) & 34° vertical



Figure 31 - Viewpoint 11 - Proposed

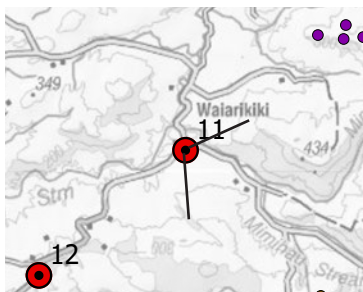
Including the Kaiwera Downs wind farm as consented July 2023

Corner of Waiarikiki Mimiha Road and Venlaw Road



Isthmus.

Southland Wind Farm | Contact Energy | August 2025



Isthmus.

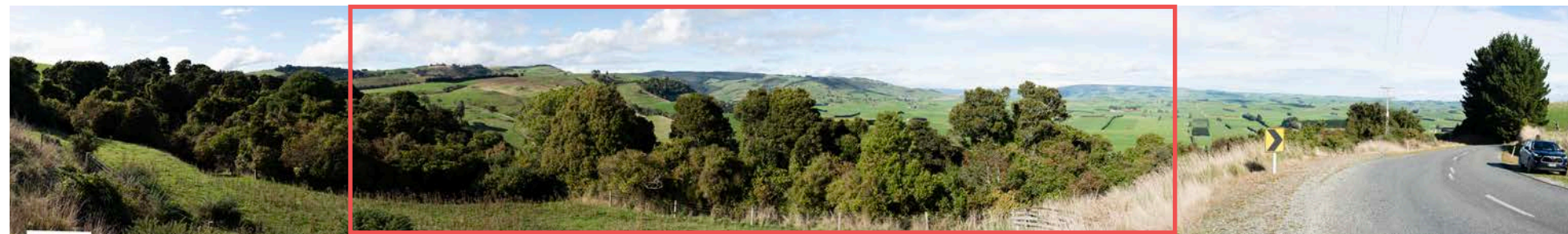
Southland Wind Farm | Contact Energy | August 2025

Original Photo AE | 50mm | DSLR Nikon D810 | 1204hrs 04 May 2023 | 1291357E 4866555N (NZTM)
 Reading distance for correct scale: 400mm | Viewpoint Elevation: Approx 107m
 Field of View Approximately 110 ° horizontal (across 2 x A3 pages) & 34 ° vertical
 Kaiwera Downs layout from Mercury Energy Consent, 2023
 Depicts Kaiwera Downs consented layout 2023 including Stage 1 turbines currently under construction

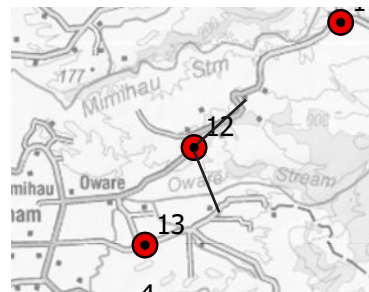


Figure 32 - Viewpoint 12 - Existing

Waiarikiki Mimiha Road, near Rapid No. 413



Isthmus.
Southland Wind Farm | Contact Energy | August 2025



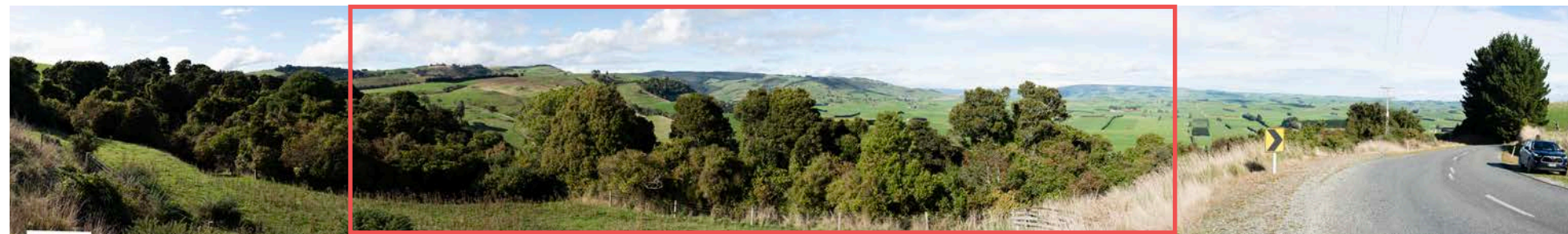
Isthmus.
Southland Wind Farm | Contact Energy | August 2025

Original Photo AE | 50mm | DSLR Nikon D810 | 1153hrs 04 May 2023 | 1287478E 4863244N (NZTM)
Reading distance for correct scale: 400mm | Viewpoint Elevation: Approx 175m
Field of View Approximately 110° horizontal (across 2 x A3 pages) & 34° vertical

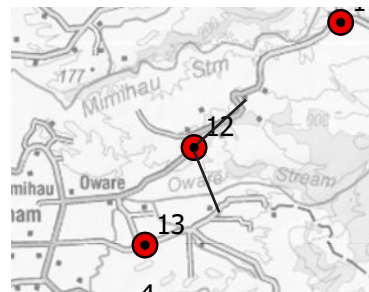


Figure 33 - Viewpoint 12 - Proposed

Waiarikiki Mimiha Road, near Rapid No. 413



Isthmus.
Southland Wind Farm | Contact Energy | August 2025



Isthmus.
Southland Wind Farm | Contact Energy | August 2025

Original Photo AE | 50mm | DSLR Nikon D810 | 1153hrs 04 May 2023 | 1287478E 4863244N (NZTM)
Reading distance for correct scale: 400mm | Viewpoint Elevation: Approx 175m
Field of View Approximately 110° horizontal (across 2 x A3 pages) & 34° vertical



**Figure 34 - Viewpoint 13
- Existing**

Woods Road, near intersection with Oware Road

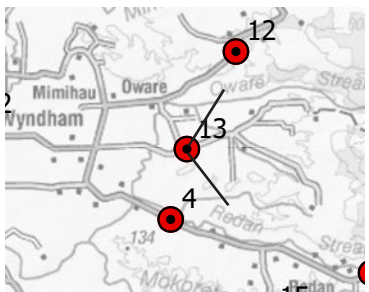
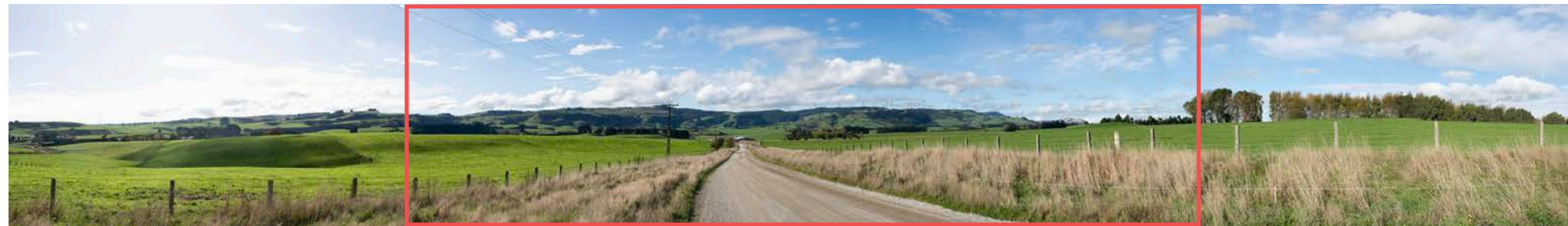


Original Photo AE | 50mm | DSLR Nikon D810 | 1147hrs 04 May 2023 | 1286180E 4860665N (NZTM)
Reading distance for correct scale: 400mm | Viewpoint Elevation: Approx 80m
Field of View Approximately 110° horizontal (across 2 x A3 pages) & 34° vertical



**Figure 35 - Viewpoint 13
- Proposed**

Woods Road, near intersection with Oware Road



Original Photo AE | 50mm | DSLR Nikon D810 | 1147hrs 04 May 2023 | 1286180E 4860665N (NZTM)
Reading distance for correct scale: 400mm | Viewpoint Elevation: Approx 80m
Field of View Approximately 110° horizontal (across 2 x A3 pages) & 34° vertical

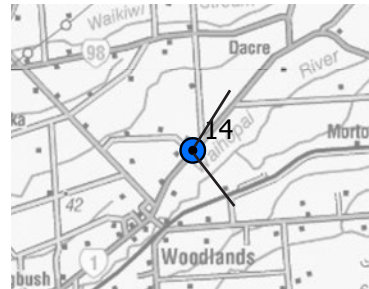


Figure 36 - Viewpoint 14 - Existing

Corner of Forbes Road and Edendale - Woodlands Highway (SH1)



Isthmus.
Southland Wind Farm | Contact Energy | August 2025



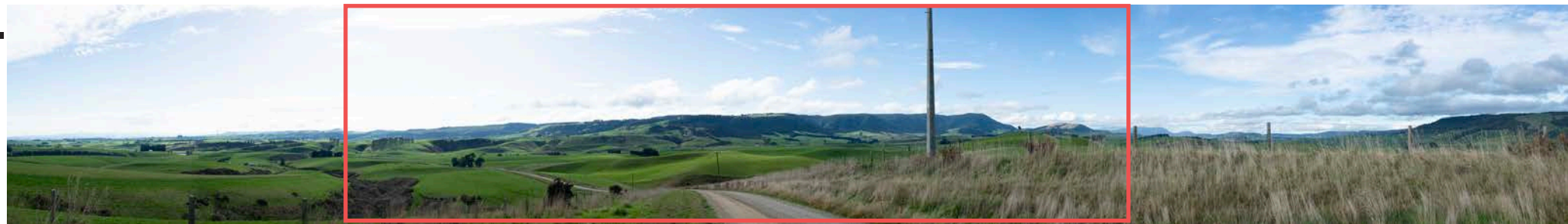
Isthmus.
Southland Wind Farm | Contact Energy | August 2025

Original Photo AE | 50mm | DSLR Nikon D810 | 1355hrs 04 May 2023 | 1258778E 4858573N (NZTM)
Reading distance for correct scale: 400mm | Viewpoint Elevation: Approx 44m
Field of View Approximately 110° horizontal (across 2 x A3 pages) & 34° vertical

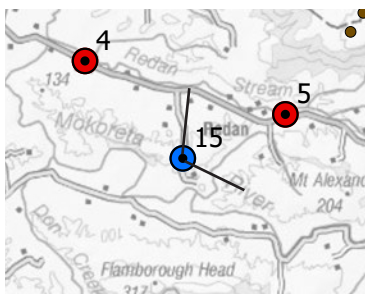


Figure 37 - Viewpoint 15 - Existing

Crest of Scott Road



Isthmus.
Southland Wind Farm | Contact Energy | August 2025



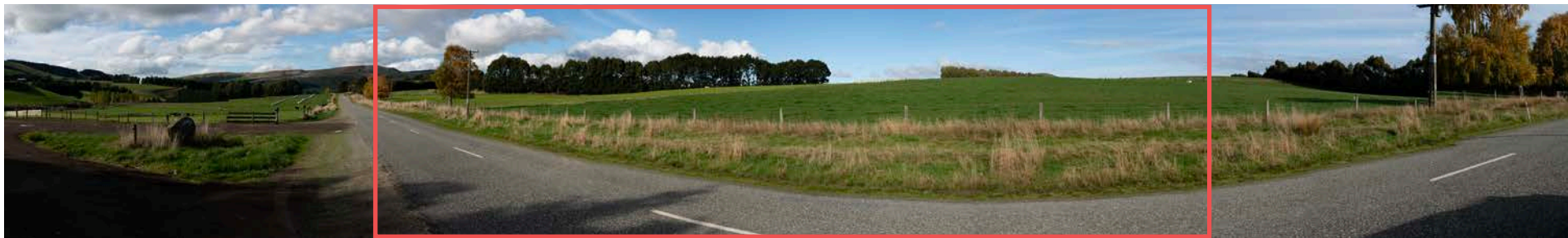
Isthmus.
Southland Wind Farm | Contact Energy | August 2025

Original Photo AE | 50mm | DSLR Nikon D810 | 1115hrs 04 May 2023 | 1288339E 4856228N (NZTM)
Reading distance for correct scale: 400mm | Viewpoint Elevation: Approx 146m
Field of View Approximately 110° horizontal (across 2 x A3 pages) & 34° vertical



Figure 39 - Viewpoint 16 - Existing

1086 Crawford Road



Isthmus.
Southland Wind Farm | Contact Energy | August 2025



Isthmus.
Southland Wind Farm | Contact Energy | August 2025

Original Photo AE | 50mm | DSLR Nikon D810 | 1259hrs 04 May 2023 | 1297910E 4872296N (NZTM)
Reading distance for correct scale: 400mm | Viewpoint Elevation: Approx 177m
Field of View Approximately 110° horizontal (across 2 x A3 pages) & 34° vertical



Figure 40 - Context Map

Scale: 1:750,000 @ A3
 Basemap Source: Land Information New Zealand (Eagle Technology)



- LEGEND**
- State Highway
 - Regional Boundary
 - Major River
 - Site Location

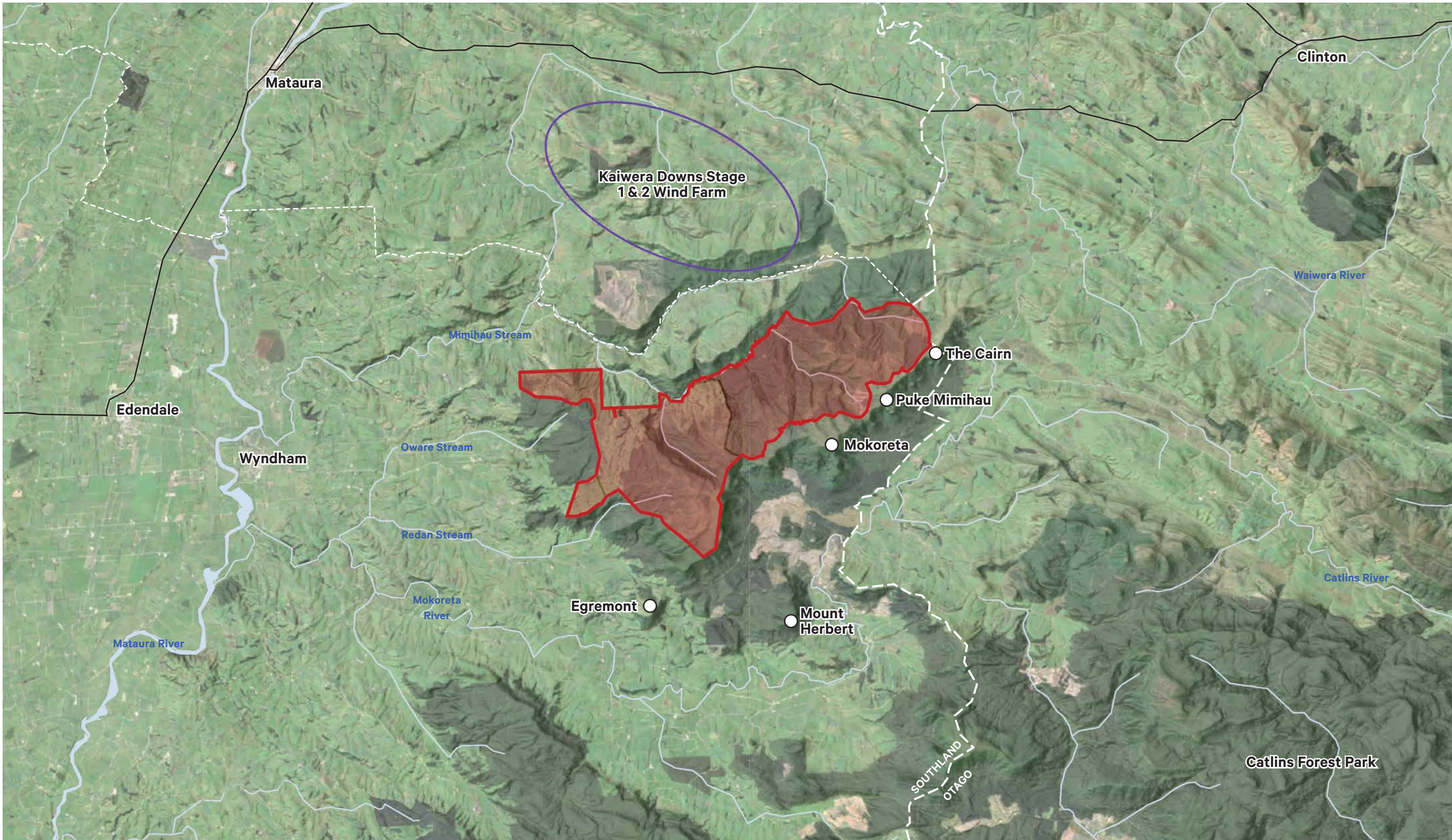


Figure 41 - Local Context Map

Scale: 1:150,000 @ A3
 Basemap Source: Land Information New Zealand (Eagle Technology)



- LEGEND**
- State Highway
 - Regional Boundary
 - District Boundary
 - River / Stream
 - Site Location
 - Kaiwera Downs Stage 1 & 2 Wind Farm

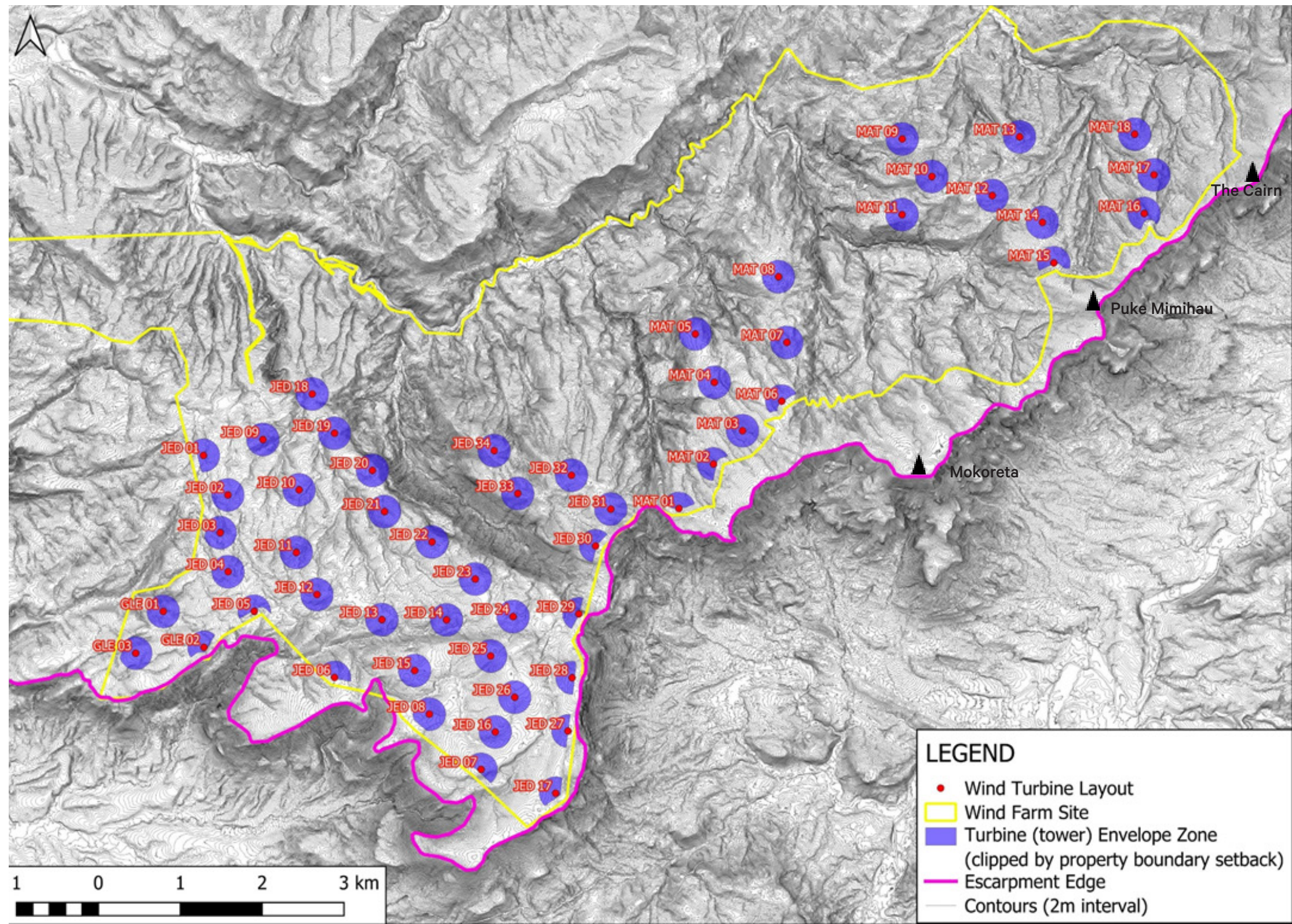


Figure 42 - Escarpment Edge & Property Boundary with Contour Base Map

NB - As indicated - the Pink line marks the Escarpment Edge rather than the crest of the ridge

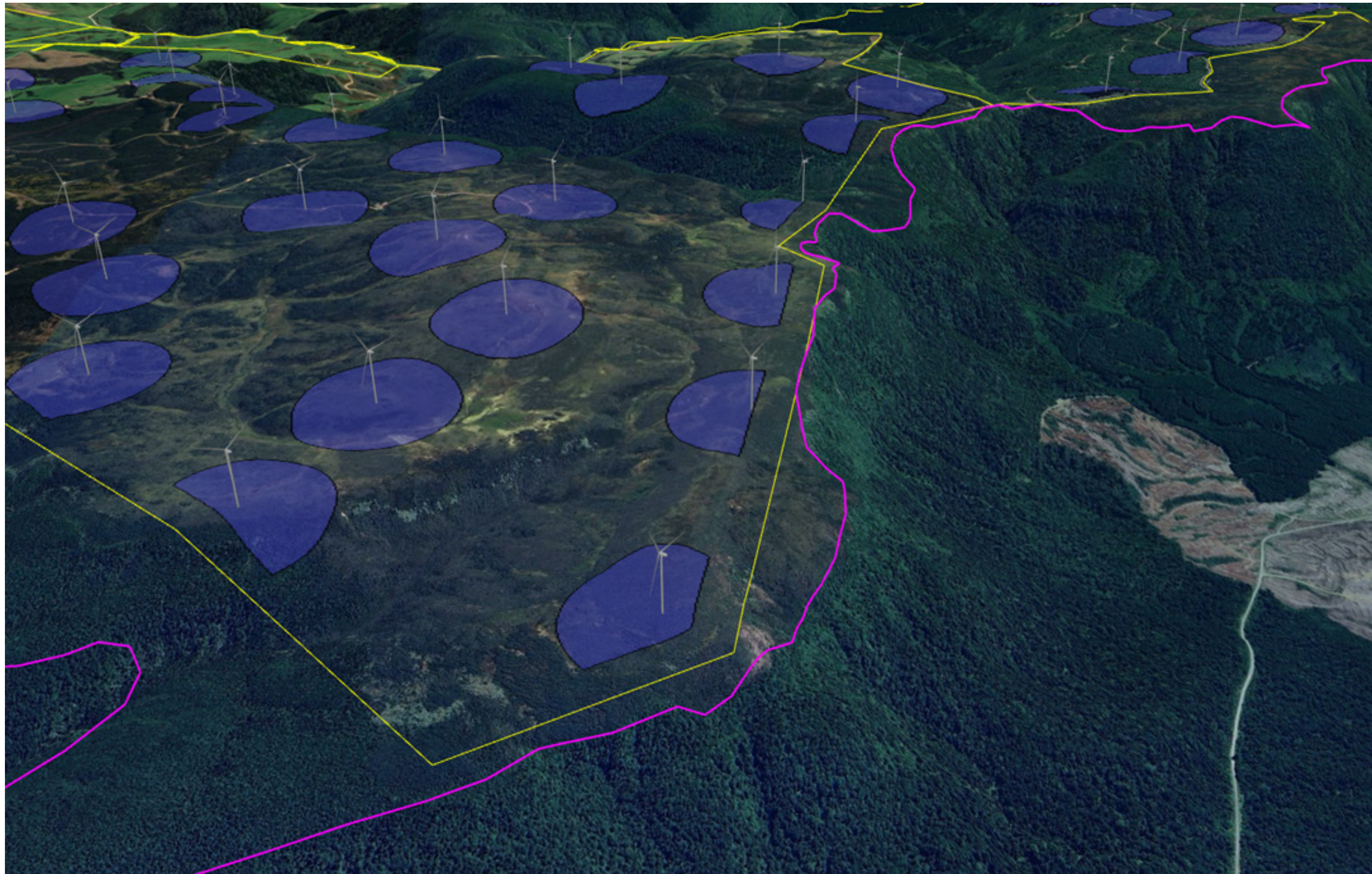


Figure 43 - Turbine Locations - Jedburgh Station Plateau
Indicative turbine envelope zones, property boundary and escarpment demarcation

NB - As indicated - the Pink line marks the Escarpment Edge rather than the crest of the ridge



Figure 44 - Turbine Locations - Matariki Forest
Indicative turbine envelope zones, property boundary and escarpment demarcation

NB - As indicated - the Pink line marks the Escarpment Edge rather than the crest of the ridge

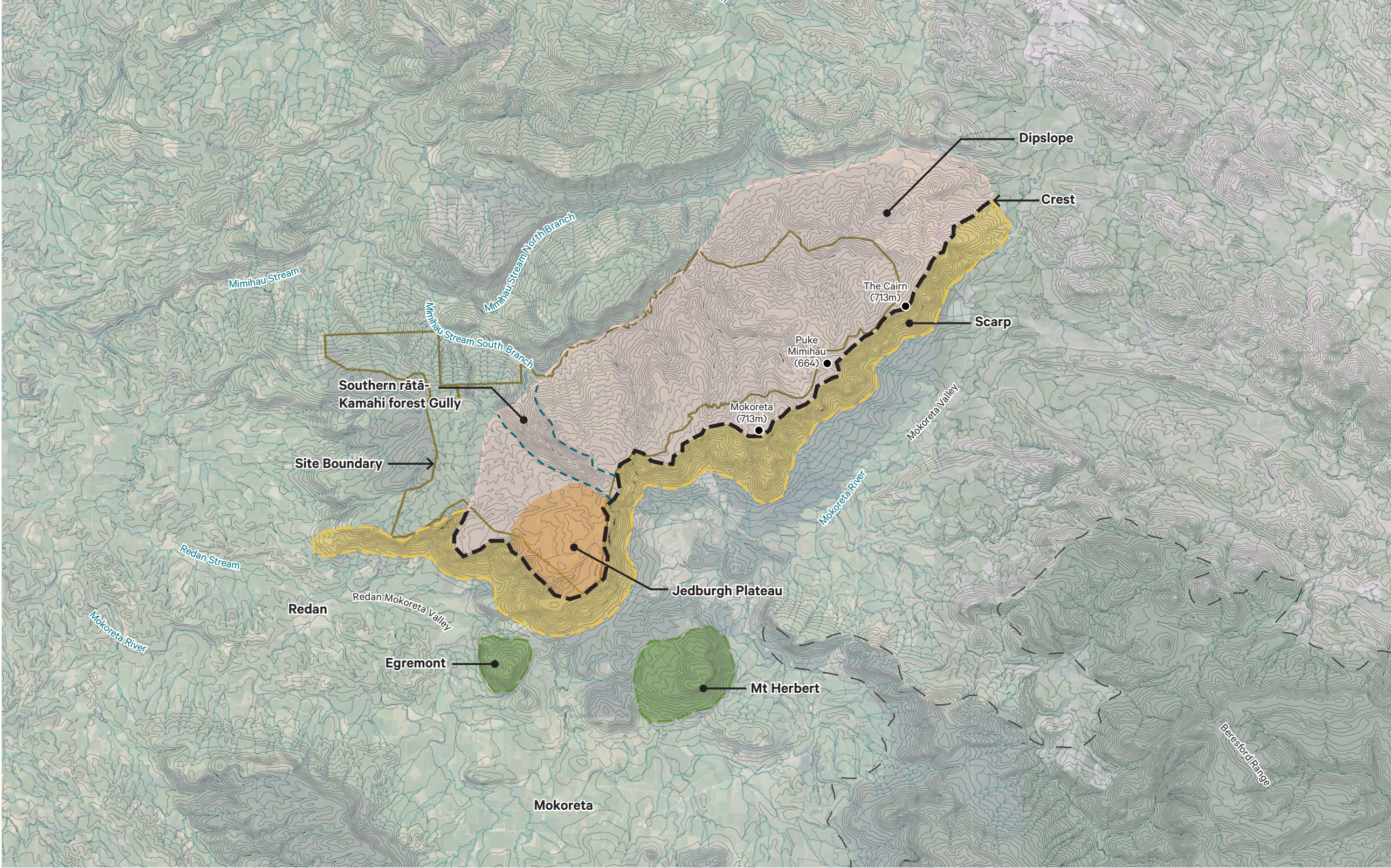


Figure 45 - Landform Diagram

Scale: NTS
 Drawing no. SK13
 Produced: Isthmus



This page is intentionally left blank

Photosimulation Methodology Statement

- Photos were taken with a 50mm fixed lens on DSLR camera. Locations were fixed using a handheld GPS unit with accuracy of 5m. These points were cross referenced using GIS information. Reference points in the landscape, such as trees and existing structures were also located to assist referencing of photo to digital model.
- A sequence of photos was taken from each viewpoint and stitched to form panoramas. Photos were overlapped by approximately 30% and edges cropped prior to stitching to eliminate edge distortion.
- A digital model was created. Computer images were generated within the digital scene from the same locations as the photos. The image was overlaid and aligned with the photo using key reference points and visual matching. (Photos were imported in RAW format to avoid degradation of the image, requiring resizing to match the computer image).
- The wire-frame was then switched off leaving the proposed activity in its correct location and scale relative to the photo. Lower parts of the proposed activity were erased using Photoshop software where they would be behind foreground items.
- The time and weather when the photo was taken was entered to the program in order to replicate lighting conditions.
- The completed photomontage is presented over two pages:
 - The photos are produced to replicate correct scale at the nominated reading distance (in this case 400mm).
 - Each photomontage is printed across two facing pages to illustrate a field of view of approximately 110° at a reading distance of 400mm. This approximates the field of human binocular vision. (But not peripheral vision which extends to approximately 200°)

Notes on use of Photosimulations:

- The Photosimulations are a useful tool but they cannot not precisely reproduce real life for the following reasons:
 - 2D Photography flattens an image compared to binocular vision.
 - Photography is static, whereas the human vision can scan and remember information.
 - Photographs are passive, whereas the eye seeks out detail.
 - The human eye can see more contrast than can be reproduced through photography.

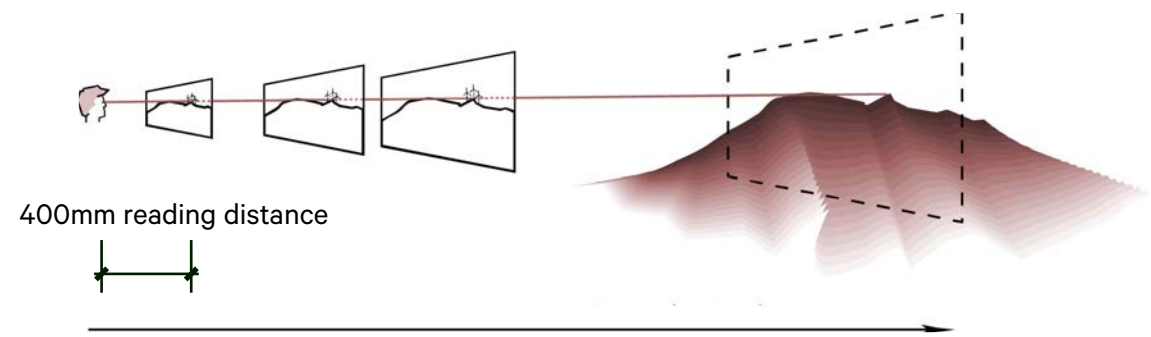


Figure 01: The relationship between reading distance and real life scale.

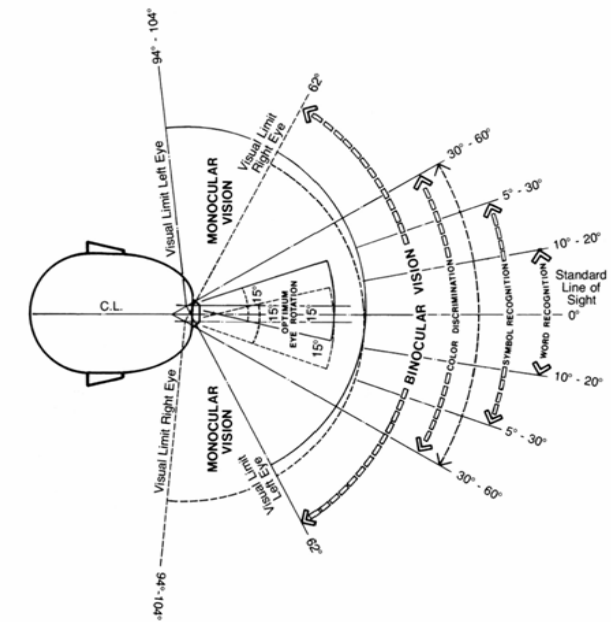


Figure 02: Binocular vision is approximately 124°. Field of view is approximately 110° across 2 x A3 pages at correct scale image for 400mm reading distance (vertical field of view is approximately 33°)



Figure 03: Comparison of 35mm lens and 50mm lens

Two images from the same location. With 35mm and 50mm lenses perspective is influenced by field of view, not by lens focal length. The overlaid portion is identical.

Land.
People.
Culture.
Isthmus.

**Tāmaki Makaurau
Auckland**
246 Queen St
Central City
PO Box 90 366
Victoria Street West

+64 9 309 9442

**Pōneke
Wellington**
Level 5
56 Victoria Street
PO Box 24116
Wellington

+64 4 499 9832

**Ōtautahi
Christchurch**
10A Mollett Street
Central City
PO Box 1153
Chistchurch 8011

+64 27 55 33 495