



IMAGE SPECIFICATIONS:

- Camera Nikon D5100
- Sensor: CMOS 23.6x15.6mm
- Lens: AF-s NIKKON 18-55mm 1:3.5-5.6G Locked at 55mm Length
- Printed Image Size: 4928 x 3264mm
- Simulation Technique: Photomontage Produced in Photoshop using scale model rendered in ArchiCad
- Image Viewing Distance: 500mm from eye at A3
- Distance to Site: Within site boundary
- Co-ordinates Mt Eden 2000: X:487336.93 Y:695457.19
- Elevation: + 68.00m
- Image Date: 8th November 2024

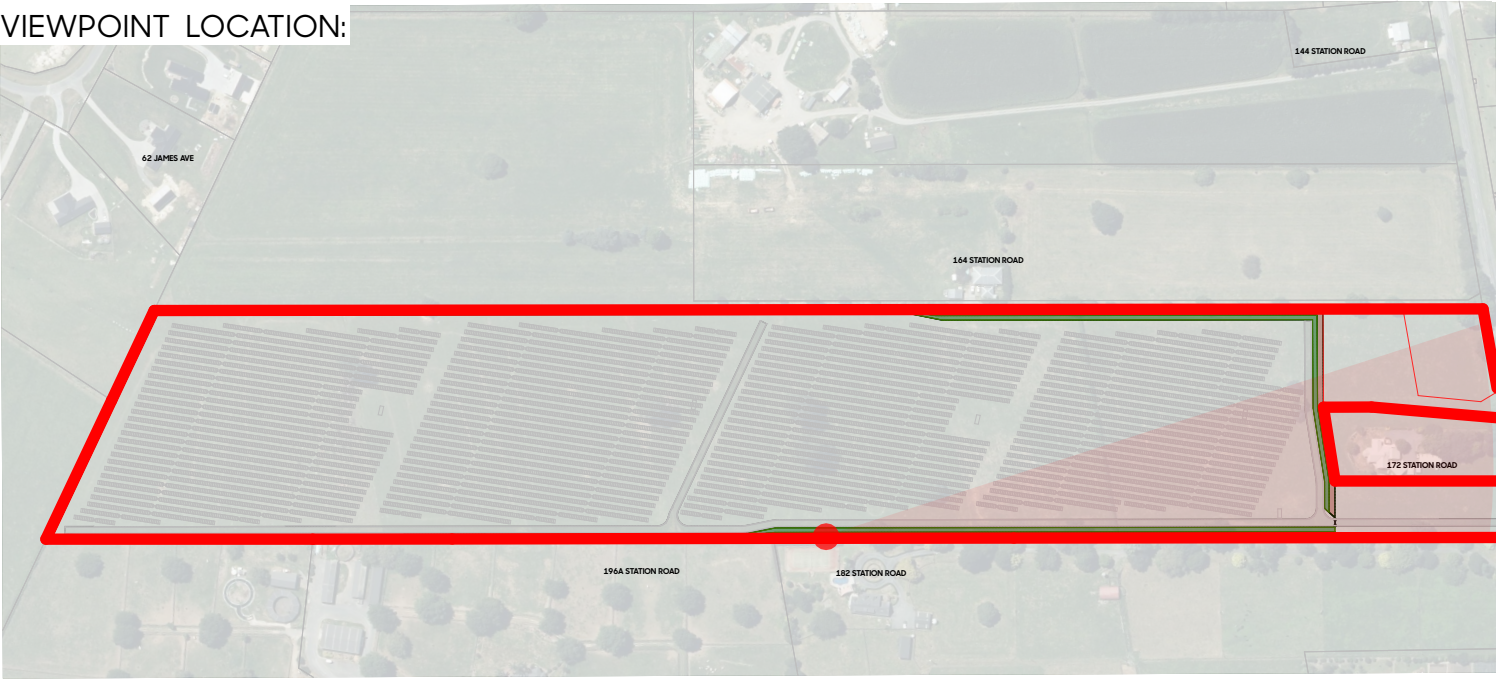
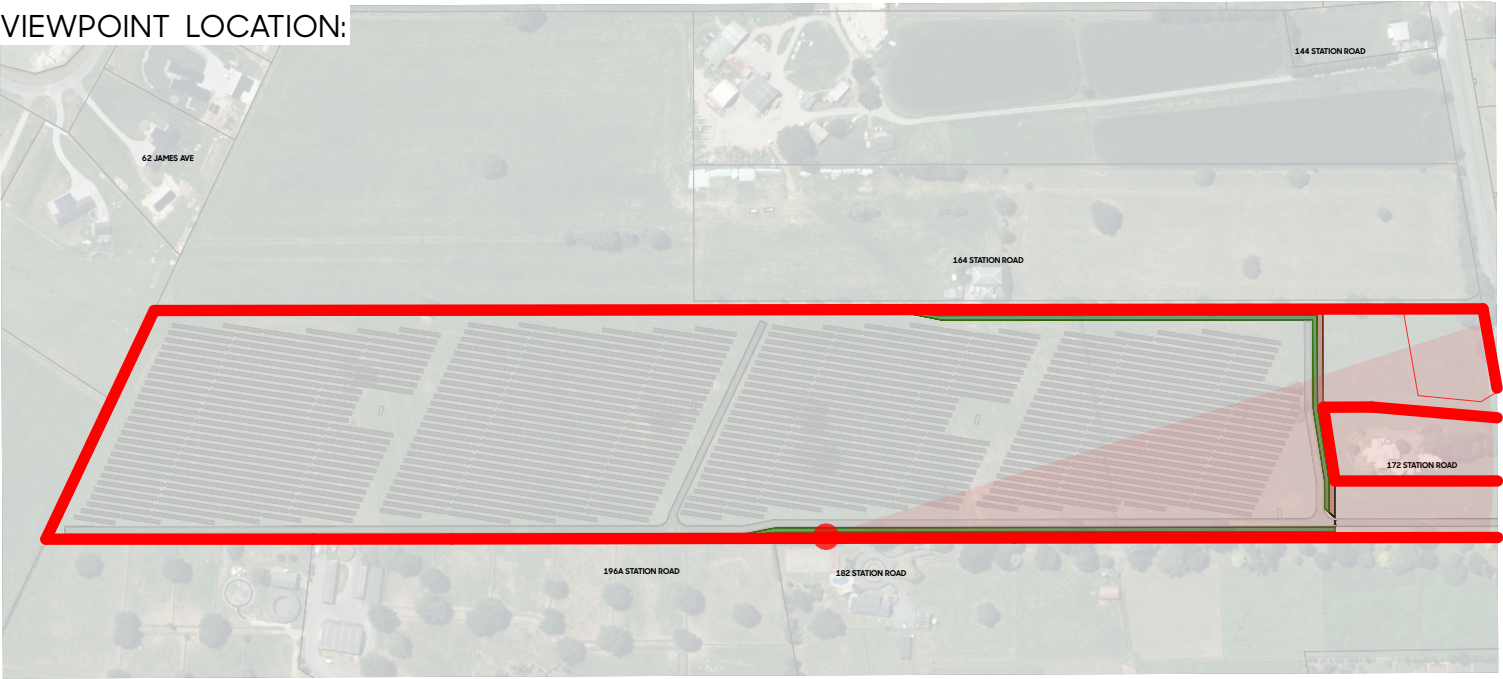




IMAGE SPECIFICATIONS:

- Camera Nikon D5100
- Sensor: CMOS 23.6x15.6mm
- Lens: AF-s NIKKON 18-55mm 1:3.5-5.6G Locked at 55mm Length
- Printed Image Size: 4928 x 3264mm
- Simulation Technique: Photomontage Produced in Photoshop using scale model rendered in ArchiCad
- Image Viewing Distance: 500mm from eye at A3
- Distance to Site: Within site boundary
- Co-ordinates Mt Eden 2000: X:487336.93 Y:695457.19
- Elevation: + 68.00m
- Image Date: 8th November 2024





OPAQUE PLANTING TO DEMONSTRATE LOCATION OF SOLAR FARM FENCE AND THE IMPACT THE SCREEN PLANTING WILL HAVE AFTER 5 YEARS

IMAGE SPECIFICATIONS:

- Camera Nikon D5100
- Sensor: CMOS 23.6x15.6mm
- Lens: AF-s NIKKON 18-55mm 1:3.5-5.6G Locked at 55mm Length
- Printed Image Size: 4928 x 3264mm
- Simulation Technique: Photomontage Produced in Photoshop using scale model rendered in ArchiCad
- Image Viewing Distance: 500mm from eye at A3
- Distance to Site: Within site boundary
- Co-ordinates Mt Eden 2000: X:487336.93 Y:695457.19
- Elevation: + 68.00m
- Image Date: 8th November 2024

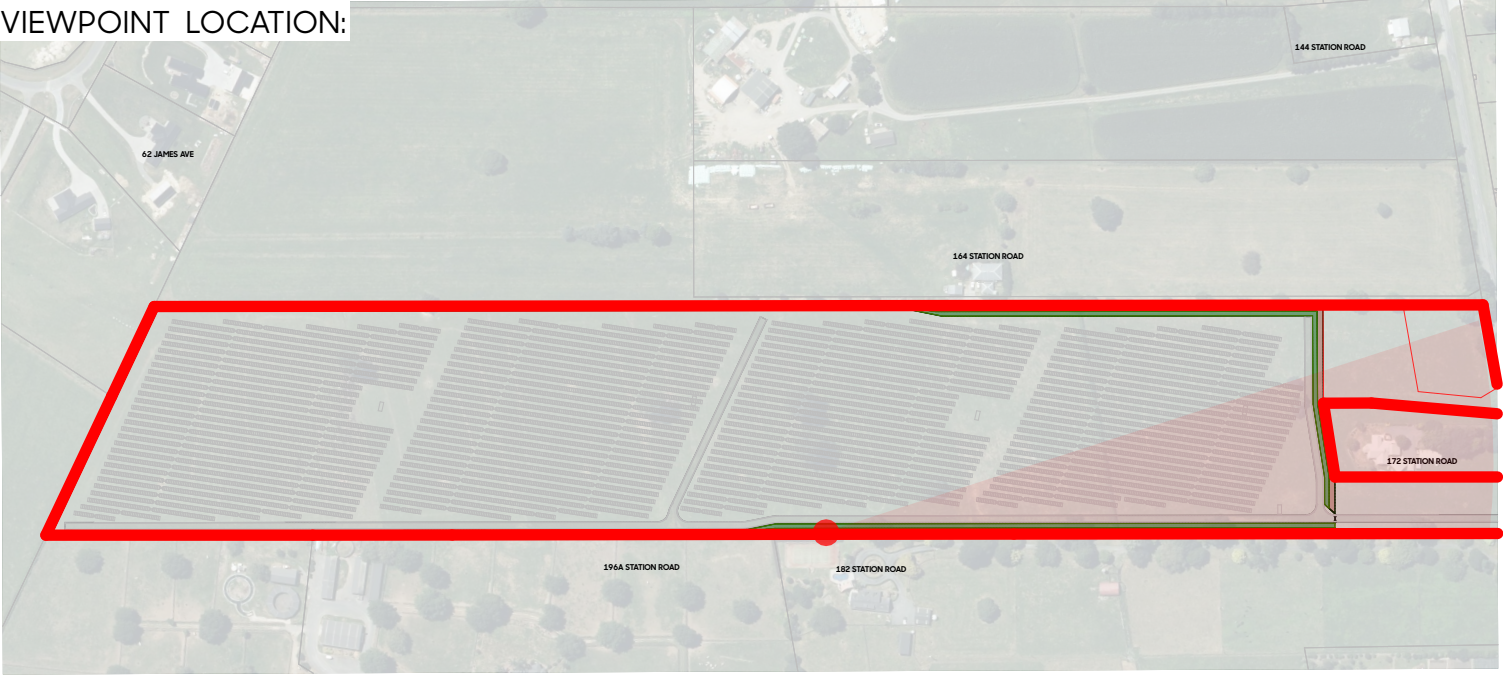




IMAGE SPECIFICATIONS:

- Camera Nikon D5100
- Sensor: CMOS 23.6x15.6mm
- Lens: AF-s NIKKON 18-55mm 1:3.5-5.6G Locked at 55mm Length
- Printed Image Size: 4928 x 3264mm
- Simulation Technique: Photomontage Produced in Photoshop using scale model rendered in ArchiCad
- Image Viewing Distance: 500mm from eye at A3
- Distance to Site: Within site boundary
- Co-ordinates Mt Eden 2000: X:487336.93 Y:695457.19
- Elevation: + 68.00m
- Image Date: 8th November 2024

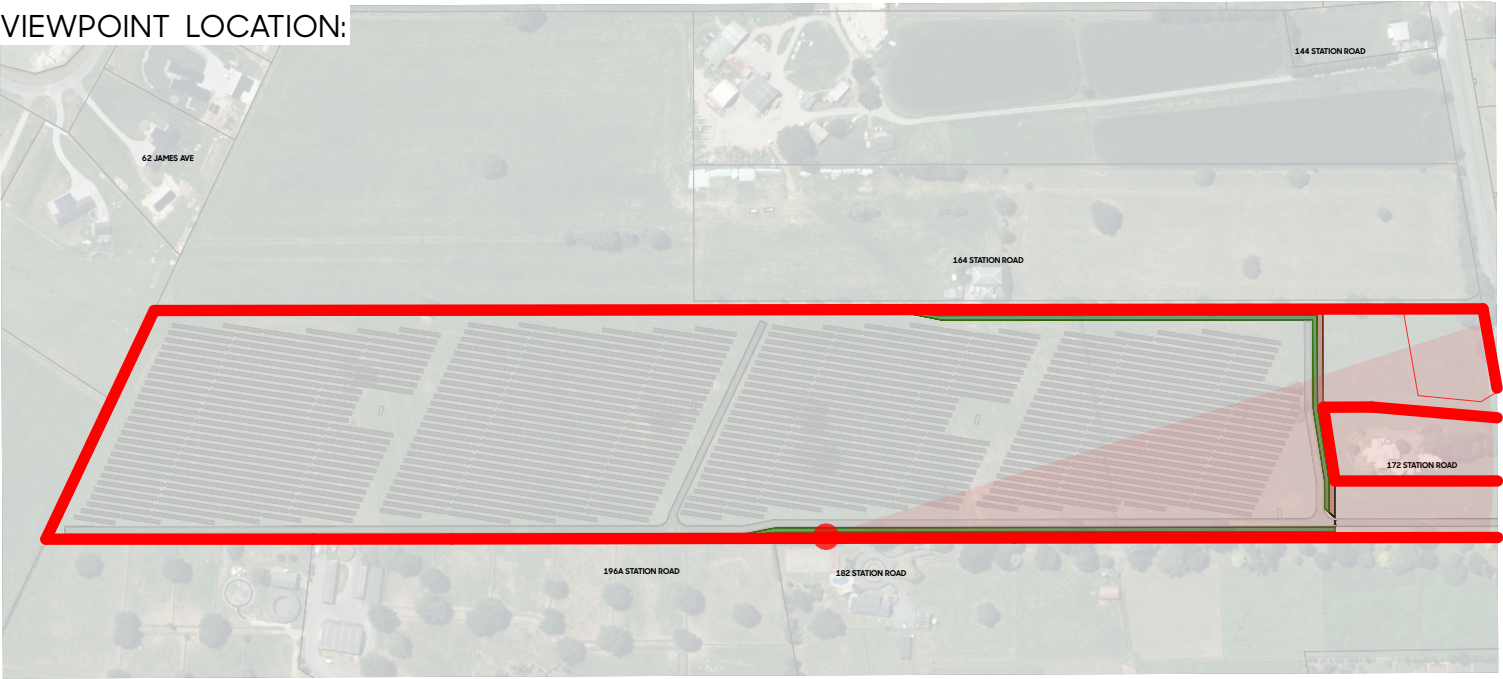




IMAGE SPECIFICATIONS: - Camera Nikon D5100
- Sensor: CMOS 23.6x15.6mm
- Lens: AF-s NIKKON 18-55mm 1:3.5-5.6G Locked at 55mm Length
- Printed Image Size: 4928 x 3264mm
- Image Viewing Distance: 500mm from eye at A3
- Distance to Site: Approx. 43m
- Co-ordinates Mt Eden 2000: X:487039.48 Y:695437.94
- Elevation: + 68.00m
- Image Date: 21st May 2025

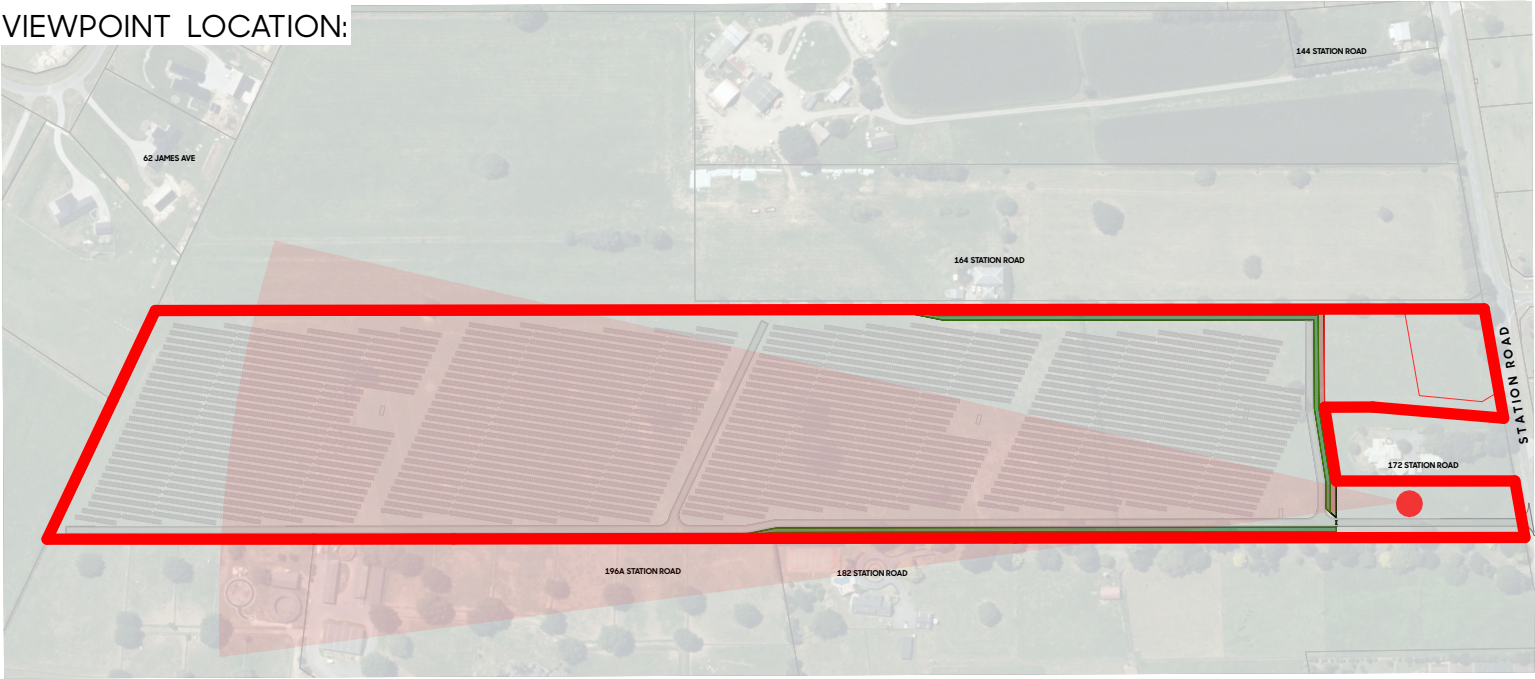




IMAGE SPECIFICATIONS:

- Camera Nikon D5100
- Sensor: CMOS 23.6x15.6mm
- Lens: AF-s NIKKON 18-55mm 1:3.5-5.6G Locked at 55mm Length
- Printed Image Size: 4928 x 3264mm
- Simulation Technique: Photomontage Produced in Photoshop using scale model rendered in ArchiCad
- Image Viewing Distance: 500mm from eye at A3
- Distance to Site: Approx. 43m
- Co-ordinates Mt Eden 2000: X:487039.48 Y:695437.94
- Elevation: + 68.00m
- Image Date: 21st May 2025

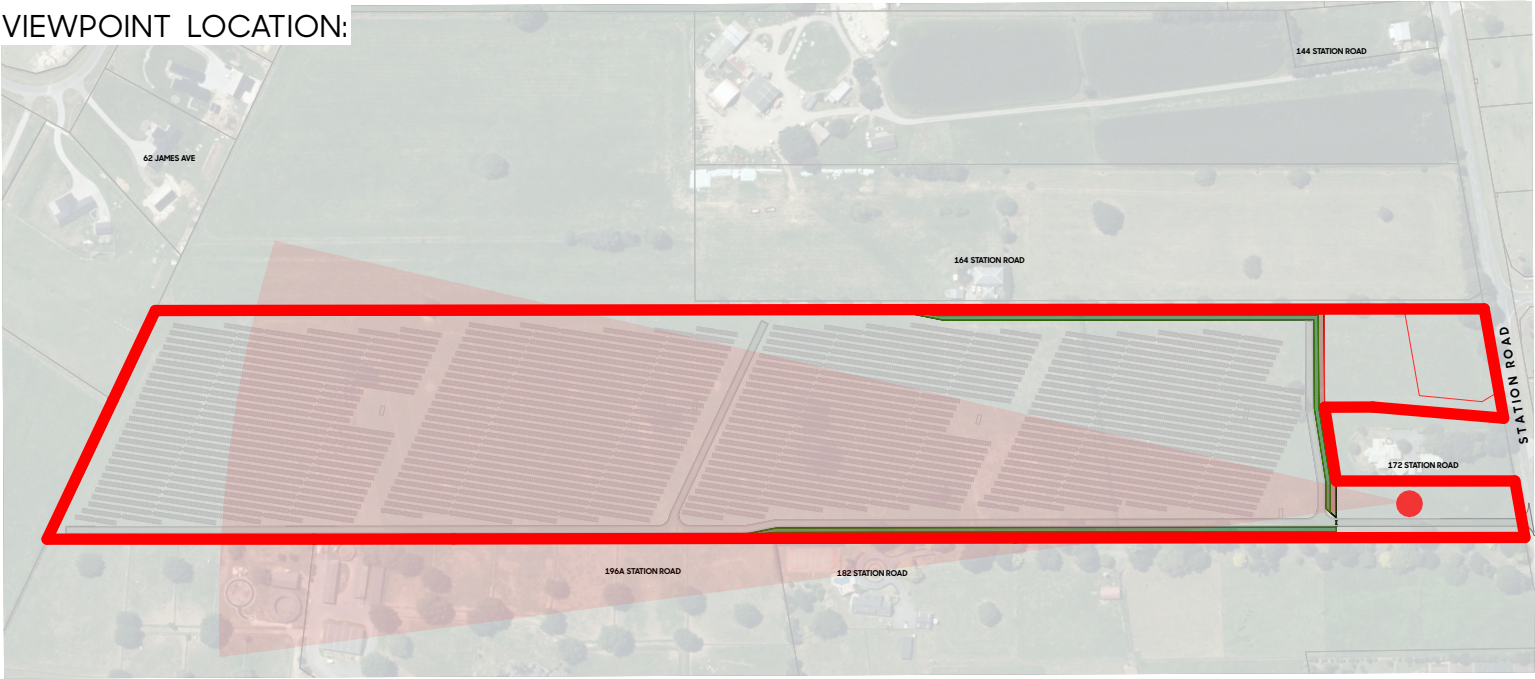




IMAGE SPECIFICATIONS:

- Camera Nikon D5100
- Sensor: CMOS 23.6x15.6mm
- Lens: AF-s NIKKON 18-55mm 1:3.5-5.6G Locked at 55mm Length
- Printed Image Size: 4928 x 3264mm
- Simulation Technique: Photomontage Produced in Photoshop using scale model rendered in ArchiCad
- Image Viewing Distance: 500mm from eye at A3
- Distance to Site: Approx. 43m
- Co-ordinates Mt Eden 2000: X:487039.48 Y:695437.94
- Elevation: + 68.00m
- Image Date: 21st May 2025

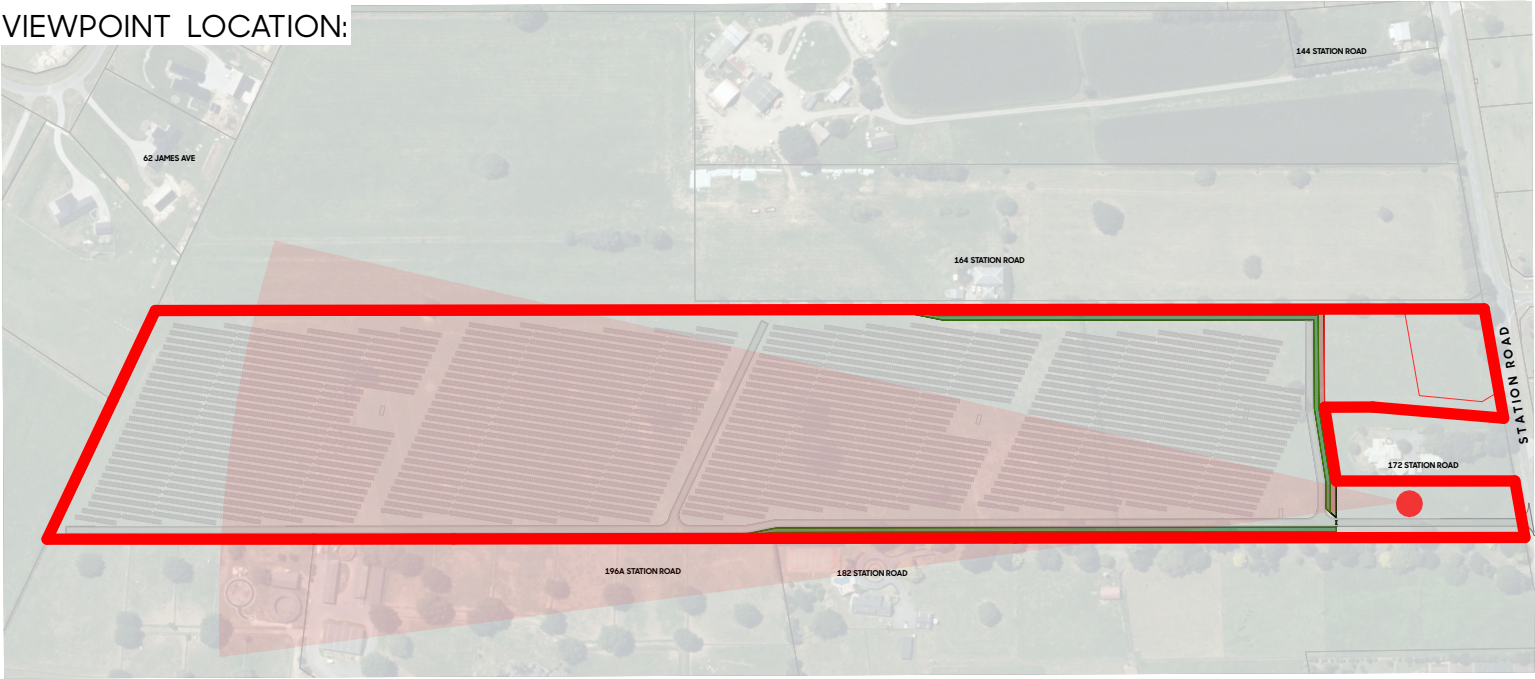




IMAGE SPECIFICATIONS: - Camera Nikon D5100
- Sensor: CMOS 23.6x15.6mm
- Lens: AF-s NIKKON 18-55mm 1:3.5-5.6G Locked at 55mm Length
- Printed Image Size: 4928 x 3264mm
- Simulation Technique: Photomontage Produced in Photoshop using scale model rendered in ArchiCad
- Image Viewing Distance: 500mm from eye at A3
- Distance to Site: Approx. 43m
- Co-ordinates Mt Eden 2000: X:487039.48 Y:695437.94
- Elevation: + 68.00m
- Image Date: 21st May 2025

