



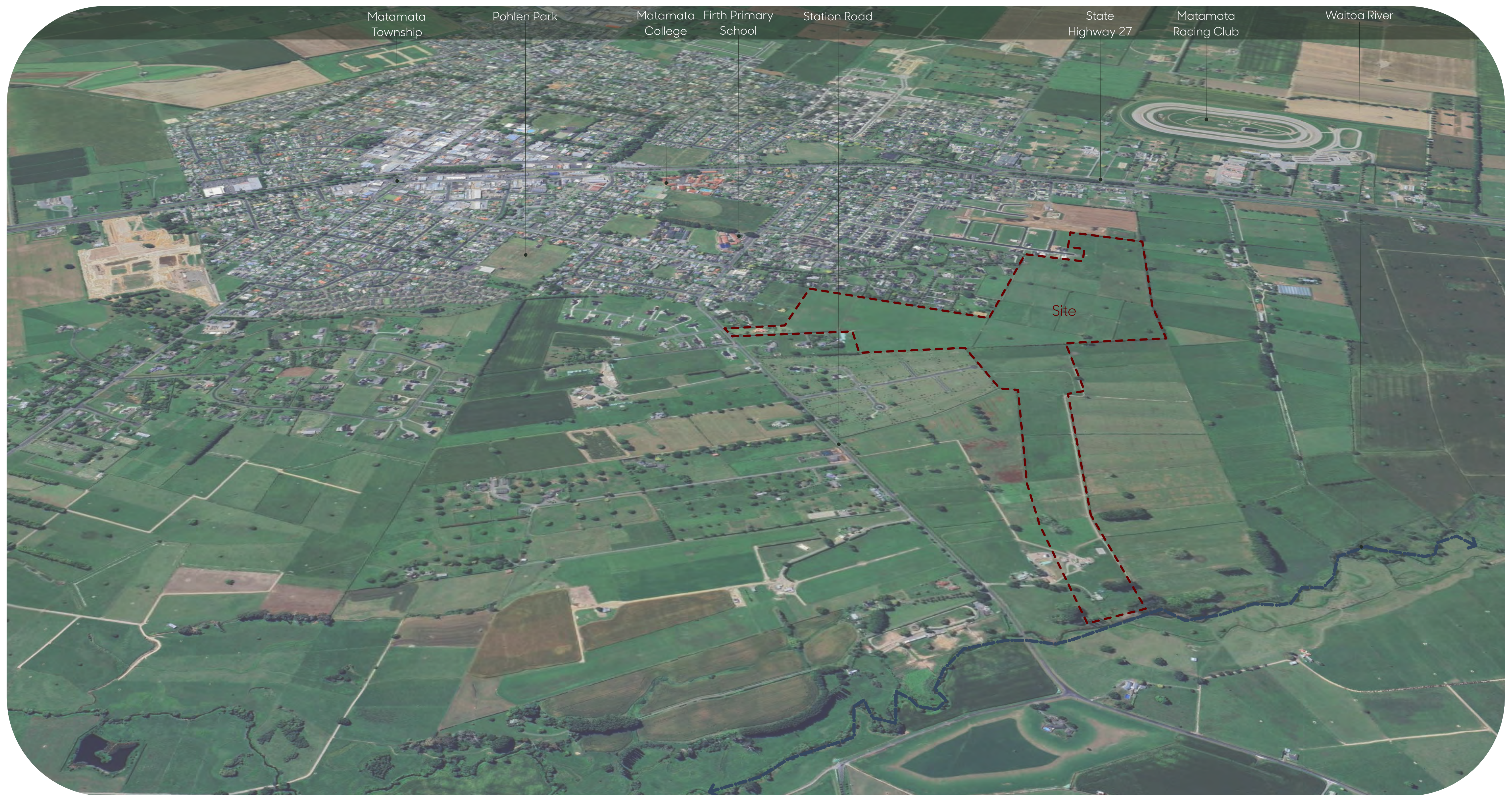
Recourse Consent S53 Landscape Package for

Unity Developments

Ashbourne Development, Matamata

Drawing Number:	Drawing Description:	S53 Drawing Issue Date:
2149/ 01	- Site Context & Local Character	26/11/25
2149/ 02	- Landscape Principles	26/11/25
2149/ 03	- Neighbourhood Character Plan	26/11/25
2149/ 04	- Cultural Identity	26/11/25
2149/ 05	- Cultural Framework	26/11/25
2149/ 06	- Overall Site Plan	26/11/25
2149/ 07	- Sheet Location Plans	26/11/25
2149/ 08 - 13	- Streetscape Landscape Plans 01 - 07	26/11/25
2149/ 14	- Typical Road Cross Sections	26/11/25
2149/ 15	- Typical Cross Sections A-A & B-B	26/11/25
2149/ 16 - 17	- Streetscape Soft & Hard Palette 01 & 02	26/11/25
2149/ 18 - 20	- Commercial / Residential Node & Open Space Plans 01 - 03	26/11/25
2149/ 21 - 22	- Commercial & Open Space Hard & Soft Palette 01 & 02	26/11/25
2149/ 23 - 27	- Greenway Plans 01 - 05	26/11/25
2149/ 28	- Typical Greenway Section	26/11/25
2149/ 29 - 31	- Greenway Soft Palette 01 - 03	26/11/25
2149/ 32	- Details	26/11/25

greenwoodassociates.co.nz



Neighbouring Residential Development



Neighbouring Residential Development



Station Road



Station Road



Station Road



Station Road



Within Site viewing East



Within Site viewing West