

Legend

- Project Extent
- Contour Post Dev 1m
- Contour Post Dev 5m
- Proposed SW Asset

Proposed SW Conduit

- 150 - 225
- 225 - 300
- 300 - 375
- 375 - 25000

Post Dev Blocked-100yrCC-Depth Band 1

- <= 0.02m
- 0.02m - 0.1m
- 0.10m - 0.15m
- 0.15m - 0.2m
- 0.2m - 0.5m
- 0.5m - 1.0m
- 1.0m - 2.0m
- >2m

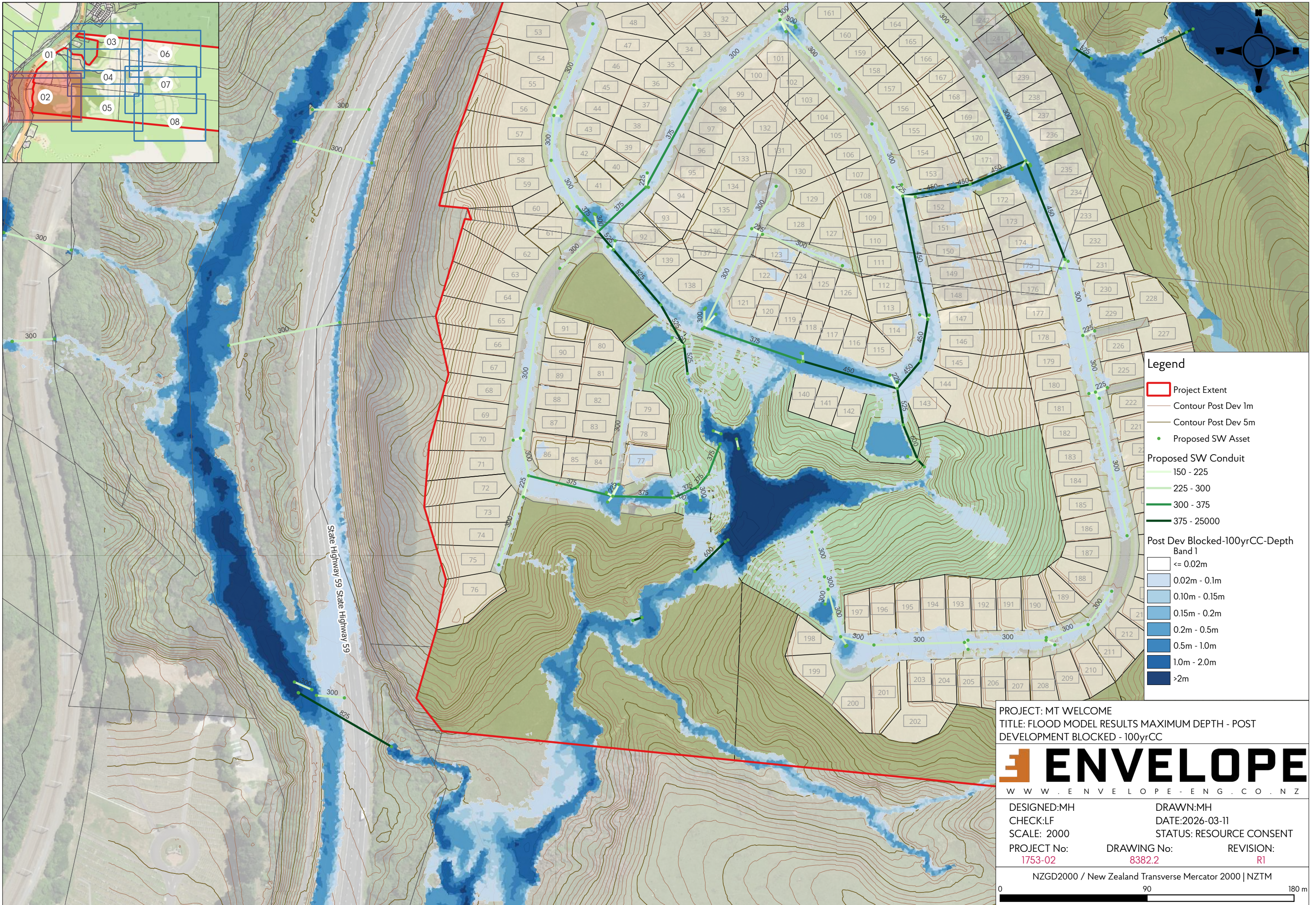
PROJECT: MT WELCOME
 TITLE: FLOOD MODEL RESULTS MAXIMUM DEPTH - POST DEVELOPMENT BLOCKED - 100yrCC

ENVELOPE
 WWW.ENVELOPE-ENG.CO.NZ

DESIGNED:MH	DRAWN:MH	
CHECK:LF	DATE:2026-03-11	
SCALE: 2000	STATUS: RESOURCE CONSENT	
PROJECT No: 1753-02	DRAWING No: 8382.1	REVISION: R1

NZGD2000 / New Zealand Transverse Mercator 2000 | NZTM

0 90 180 m



- Legend**
- Project Extent
 - Contour Post Dev 1m
 - Contour Post Dev 5m
 - Proposed SW Asset
- Proposed SW Conduit**
- 150 - 225
 - 225 - 300
 - 300 - 375
 - 375 - 25000
- Post Dev Blocked-100yrCC-Depth Band 1**
- <= 0.02m
 - 0.02m - 0.1m
 - 0.10m - 0.15m
 - 0.15m - 0.2m
 - 0.2m - 0.5m
 - 0.5m - 1.0m
 - 1.0m - 2.0m
 - >2m

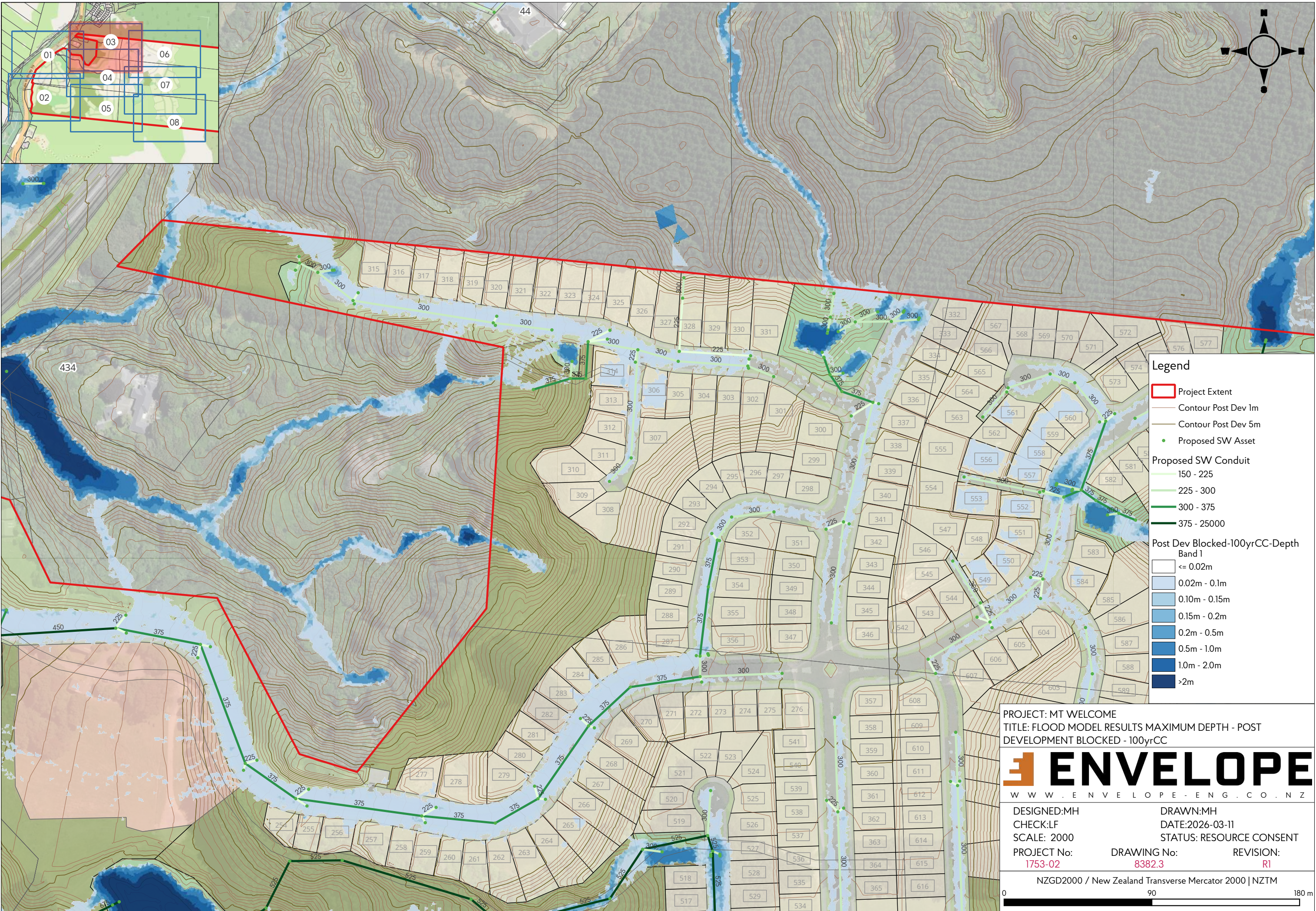
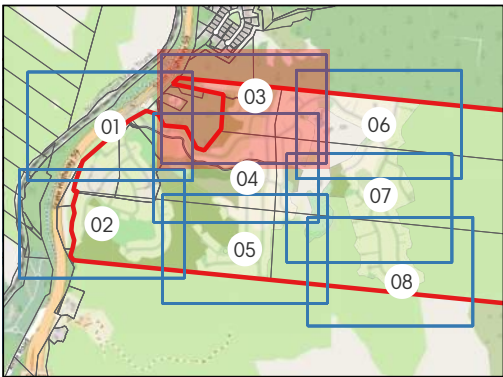
PROJECT: MT WELCOME
 TITLE: FLOOD MODEL RESULTS MAXIMUM DEPTH - POST DEVELOPMENT BLOCKED - 100yrCC

ENVELOPE
 WWW.ENVELOPE-ENG.CO.NZ

DESIGNED:MH	DRAWN:MH	
CHECK:LF	DATE:2026-03-11	
SCALE: 2000	STATUS: RESOURCE CONSENT	
PROJECT No: 1753-02	DRAWING No: 8382.2	REVISION: R1

NZGD2000 / New Zealand Transverse Mercator 2000 | NZTM

0 90 180 m



Legend

- Project Extent
- Contour Post Dev 1m
- Contour Post Dev 5m
- Proposed SW Asset

Proposed SW Conduit

- 150 - 225
- 225 - 300
- 300 - 375
- 375 - 25000

Post Dev Blocked-100yrCC-Depth Band 1

- <= 0.02m
- 0.02m - 0.1m
- 0.10m - 0.15m
- 0.15m - 0.2m
- 0.2m - 0.5m
- 0.5m - 1.0m
- 1.0m - 2.0m
- >2m

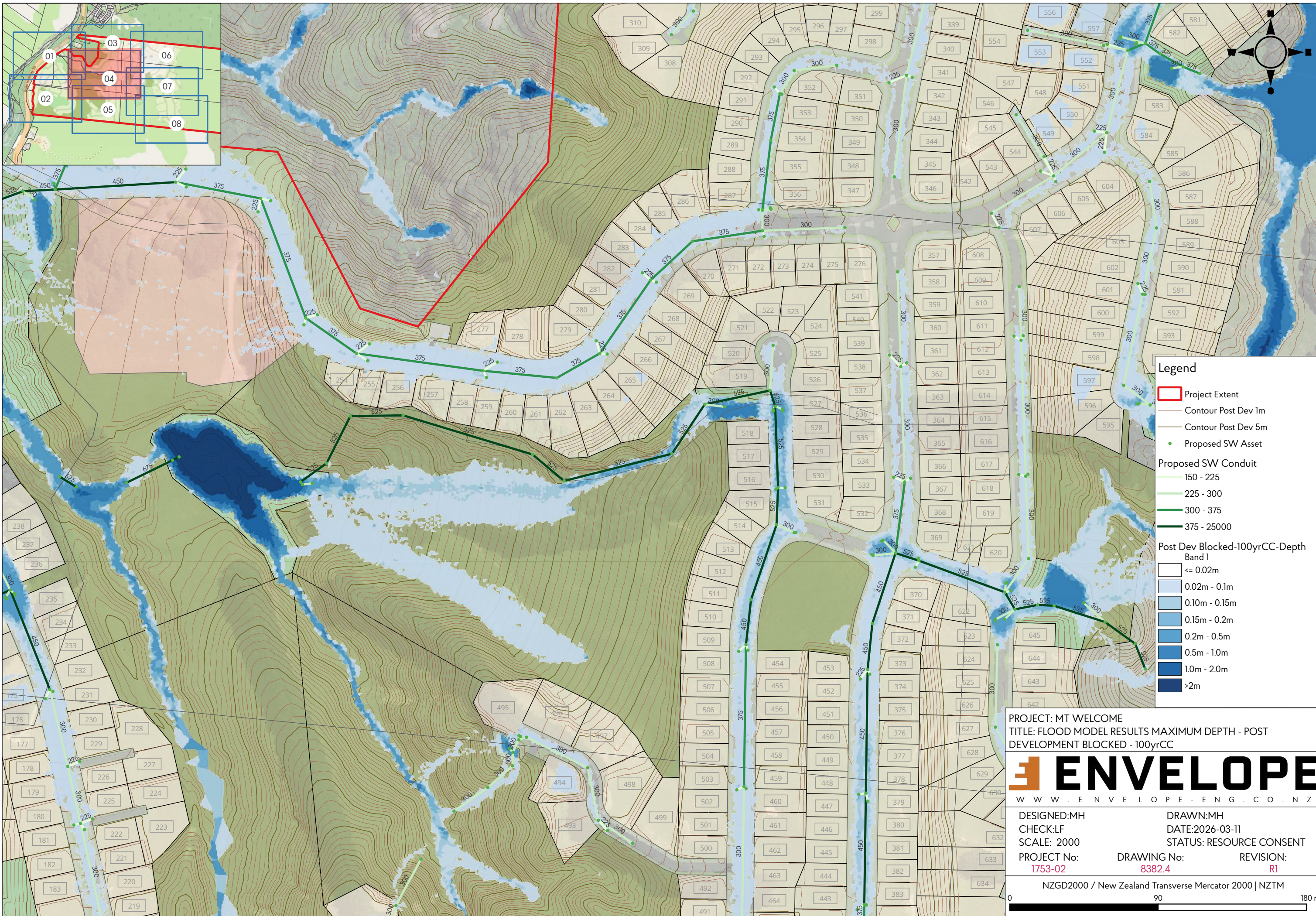
PROJECT: MT WELCOME
 TITLE: FLOOD MODEL RESULTS MAXIMUM DEPTH - POST DEVELOPMENT BLOCKED - 100yrCC

ENVELOPE
 WWW.ENVELOPE-ENG.CO.NZ

DESIGNED:MH	DRAWN:MH	
CHECK:LF	DATE:2026-03-11	
SCALE: 2000	STATUS: RESOURCE CONSENT	
PROJECT No: 1753-02	DRAWING No: 8382.3	REVISION: R1

NZGD2000 / New Zealand Transverse Mercator 2000 | NZTM

0 90 180 m



Legend

- Project Extent
- Contour Post Dev 1m
- Contour Post Dev 5m
- Proposed SW Asset

Proposed SW Conduit

- 150 - 225
- 225 - 300
- 300 - 375
- 375 - 25000

Post Dev Blocked-100yrCC-Depth Band 1

- <= 0.02m
- 0.02m - 0.1m
- 0.10m - 0.15m
- 0.15m - 0.2m
- 0.2m - 0.5m
- 0.5m - 1.0m
- 1.0m - 2.0m
- >2m

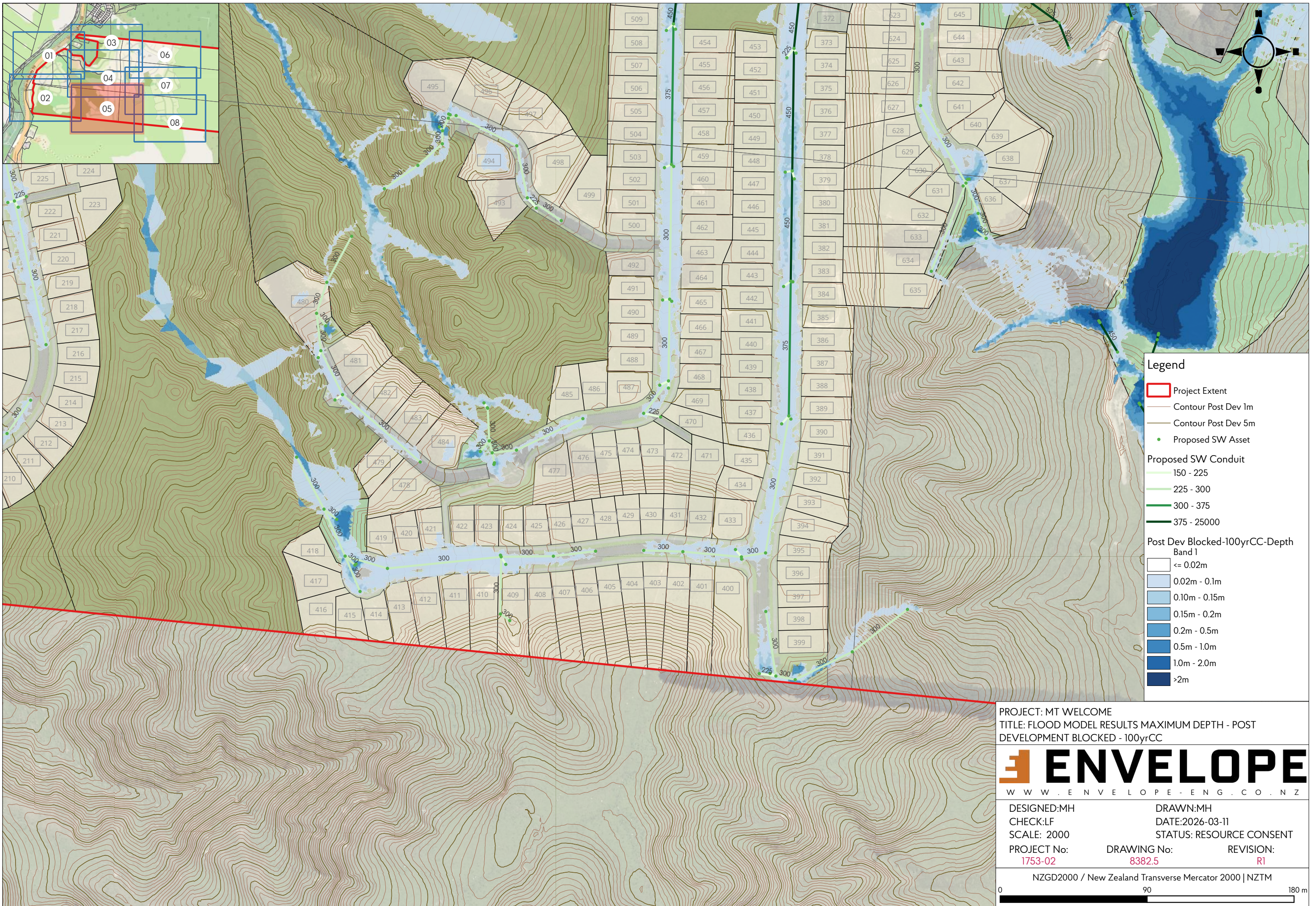
PROJECT: MT WELCOME
 TITLE: FLOOD MODEL RESULTS MAXIMUM DEPTH - POST DEVELOPMENT BLOCKED - 100yrCC

ENVELOPE
 WWW.ENVELOPE-ENG.CO.NZ

DESIGNED:MH	DRAWN:MH	
CHECK:LF	DATE:2026-03-11	
SCALE: 2000	STATUS: RESOURCE CONSENT	
PROJECT No: 1753-02	DRAWING No: 8382.4	REVISION: R1

NZGD2000 / New Zealand Transverse Mercator 2000 | NZTM

0 90 180 m



Legend

- Project Extent
- Contour Post Dev 1m
- Contour Post Dev 5m
- Proposed SW Asset

Proposed SW Conduit

- 150 - 225
- 225 - 300
- 300 - 375
- 375 - 25000

Post Dev Blocked-100yrCC-Depth Band 1

- <= 0.02m
- 0.02m - 0.1m
- 0.10m - 0.15m
- 0.15m - 0.2m
- 0.2m - 0.5m
- 0.5m - 1.0m
- 1.0m - 2.0m
- >2m

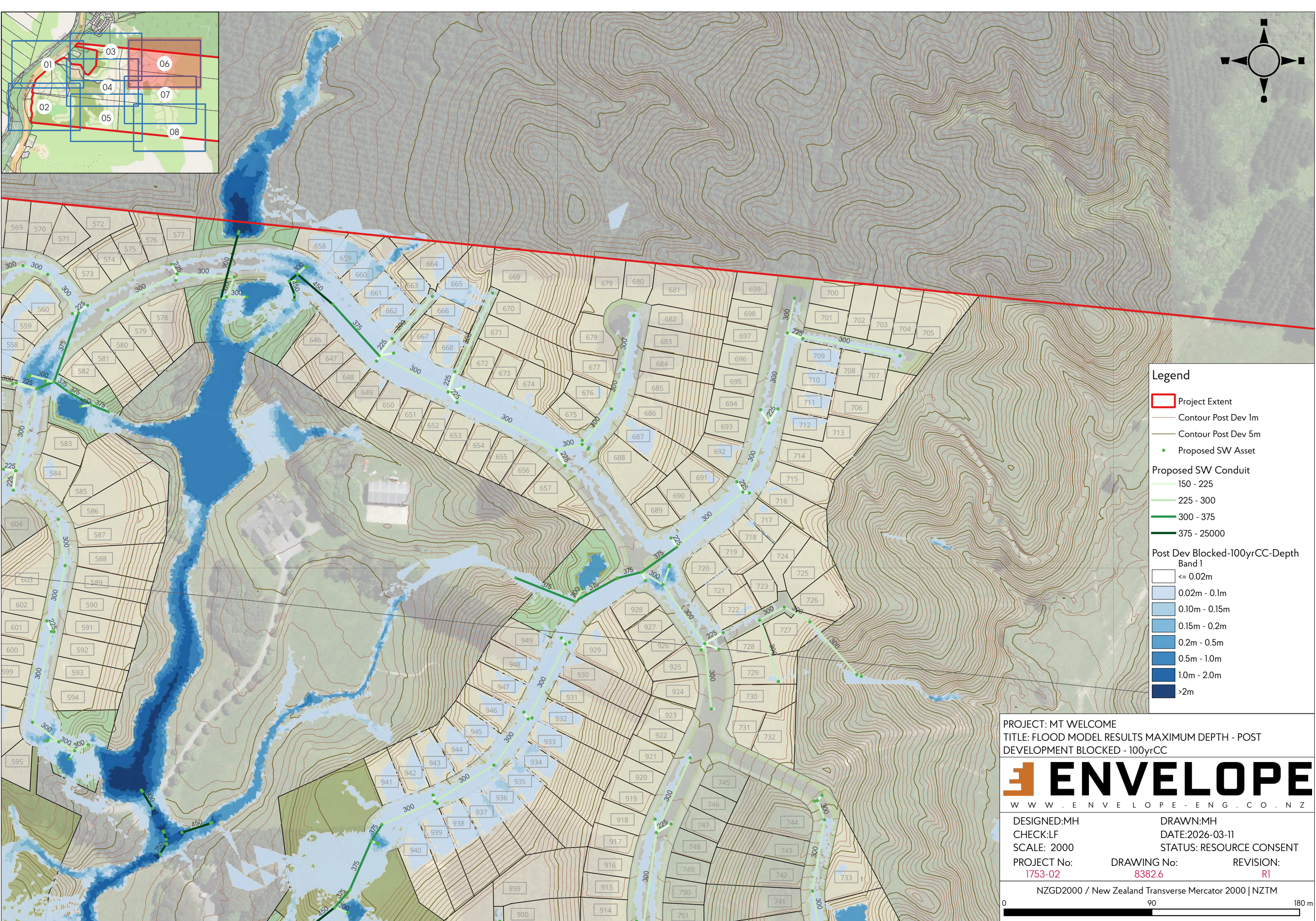
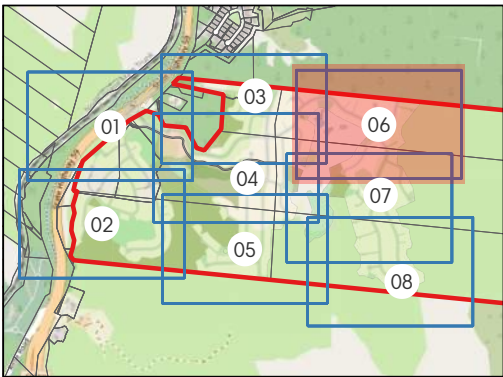
PROJECT: MT WELCOME
 TITLE: FLOOD MODEL RESULTS MAXIMUM DEPTH - POST DEVELOPMENT BLOCKED - 100yrCC

ENVELOPE
 WWW.ENVELOPE-ENG.CO.NZ

DESIGNED:MH	DRAWN:MH	
CHECK:LF	DATE:2026-03-11	
SCALE: 2000	STATUS: RESOURCE CONSENT	
PROJECT No: 1753-02	DRAWING No: 8382.5	REVISION: R1

NZGD2000 / New Zealand Transverse Mercator 2000 | NZTM

0 90 180 m



Legend

- Project Extent
- Contour Post Dev 1m
- Contour Post Dev 5m
- Proposed SW Asset

Proposed SW Conduit

- 150 - 225
- 225 - 300
- 300 - 375
- 375 - 25000

Post Dev Blocked-100yrCC-Depth Band 1

- <= 0.02m
- 0.02m - 0.1m
- 0.10m - 0.15m
- 0.15m - 0.2m
- 0.2m - 0.5m
- 0.5m - 1.0m
- 1.0m - 2.0m
- >2m

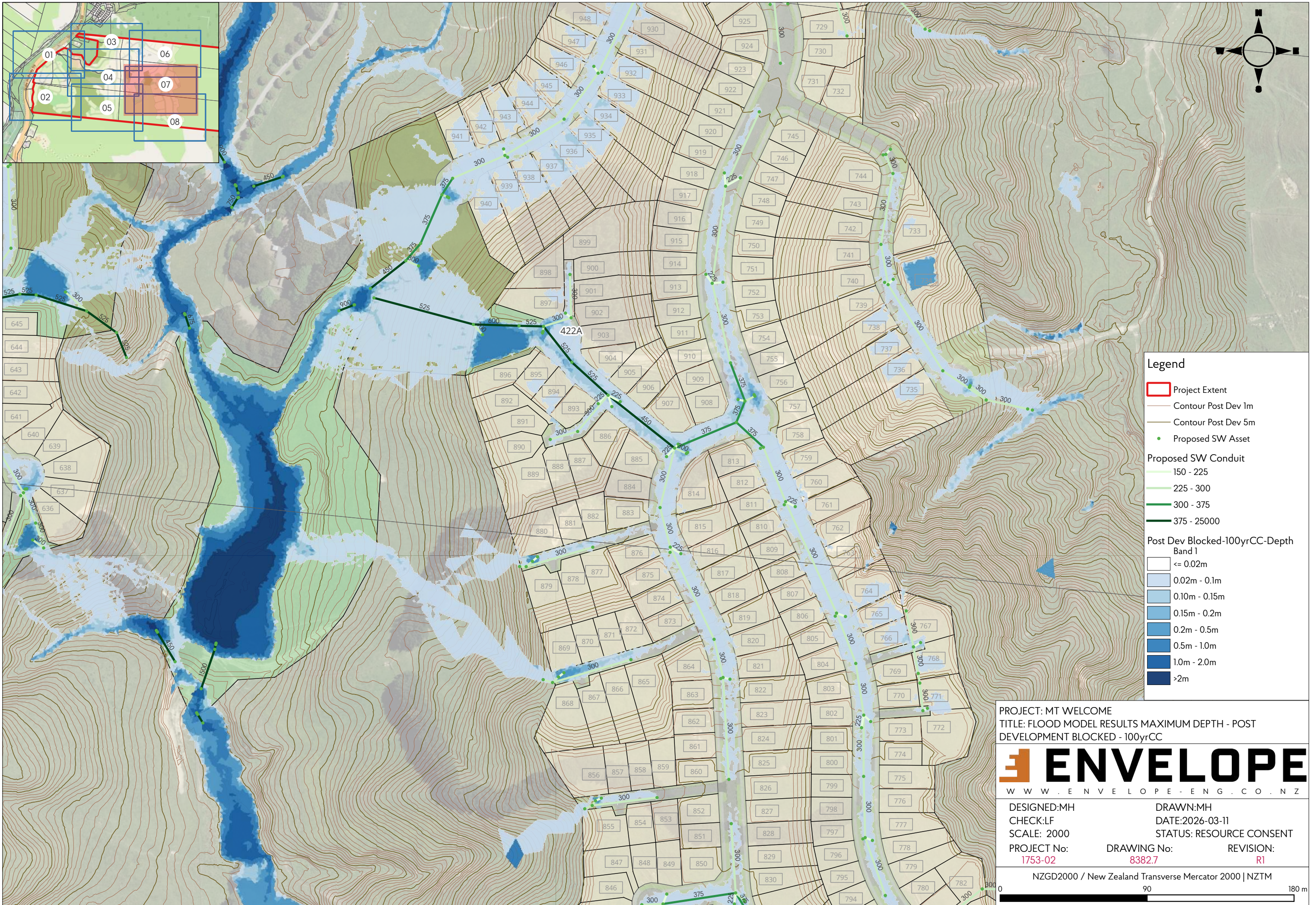
PROJECT: MT WELCOME
 TITLE: FLOOD MODEL RESULTS MAXIMUM DEPTH - POST DEVELOPMENT BLOCKED - 100yrCC

ENVELOPE
 WWW.ENVELOPE-ENG.CO.NZ

DESIGNED:MH	DRAWN:MH	
CHECK:LF	DATE:2026-03-11	
SCALE: 2000	STATUS: RESOURCE CONSENT	
PROJECT No: 1753-02	DRAWING No: 8382.6	REVISION: R1

NZGD2000 / New Zealand Transverse Mercator 2000 | NZTM

0 90 180 m



- Legend**
- Project Extent
 - Contour Post Dev 1m
 - Contour Post Dev 5m
 - Proposed SW Asset
- Proposed SW Conduit**
- 150 - 225
 - 225 - 300
 - 300 - 375
 - 375 - 25000
- Post Dev Blocked-100yrCC-Depth Band 1**
- <= 0.02m
 - 0.02m - 0.1m
 - 0.10m - 0.15m
 - 0.15m - 0.2m
 - 0.2m - 0.5m
 - 0.5m - 1.0m
 - 1.0m - 2.0m
 - >2m

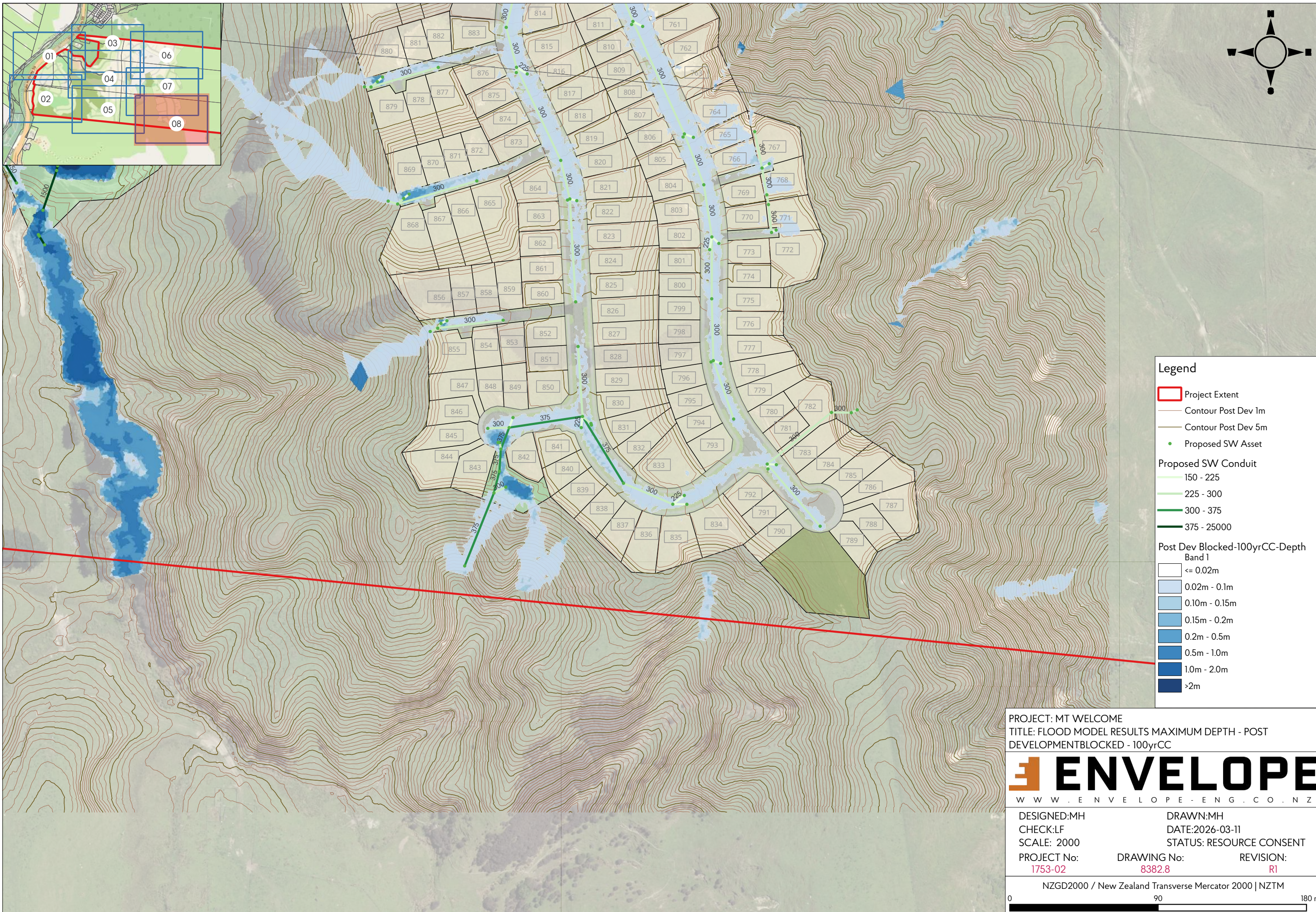
PROJECT: MT WELCOME
 TITLE: FLOOD MODEL RESULTS MAXIMUM DEPTH - POST DEVELOPMENT BLOCKED - 100yrCC

ENVELOPE
 WWW.ENVELOPE-ENG.CO.NZ

DESIGNED:MH	DRAWN:MH	
CHECK:LF	DATE:2026-03-11	
SCALE: 2000	STATUS: RESOURCE CONSENT	
PROJECT No: 1753-02	DRAWING No: 8382.7	REVISION: R1

NZGD2000 / New Zealand Transverse Mercator 2000 | NZTM

0 90 180 m



Legend

- Project Extent
- Contour Post Dev 1m
- Contour Post Dev 5m
- Proposed SW Asset

Proposed SW Conduit

- 150 - 225
- 225 - 300
- 300 - 375
- 375 - 25000

Post Dev Blocked-100yrCC-Depth Band 1

- <= 0.02m
- 0.02m - 0.1m
- 0.10m - 0.15m
- 0.15m - 0.2m
- 0.2m - 0.5m
- 0.5m - 1.0m
- 1.0m - 2.0m
- >2m

PROJECT: MT WELCOME
 TITLE: FLOOD MODEL RESULTS MAXIMUM DEPTH - POST DEVELOPMENTBLOCKED - 100yrCC

ENVELOPE
 WWW.ENVELOPE-ENG.CO.NZ

DESIGNED:MH	DRAWN:MH	
CHECK:LF	DATE:2026-03-11	
SCALE: 2000	STATUS: RESOURCE CONSENT	
PROJECT No: 1753-02	DRAWING No: 8382.8	REVISION: R1

NZGD2000 / New Zealand Transverse Mercator 2000 | NZTM

0 90 180 m