

Amalgamation Notes

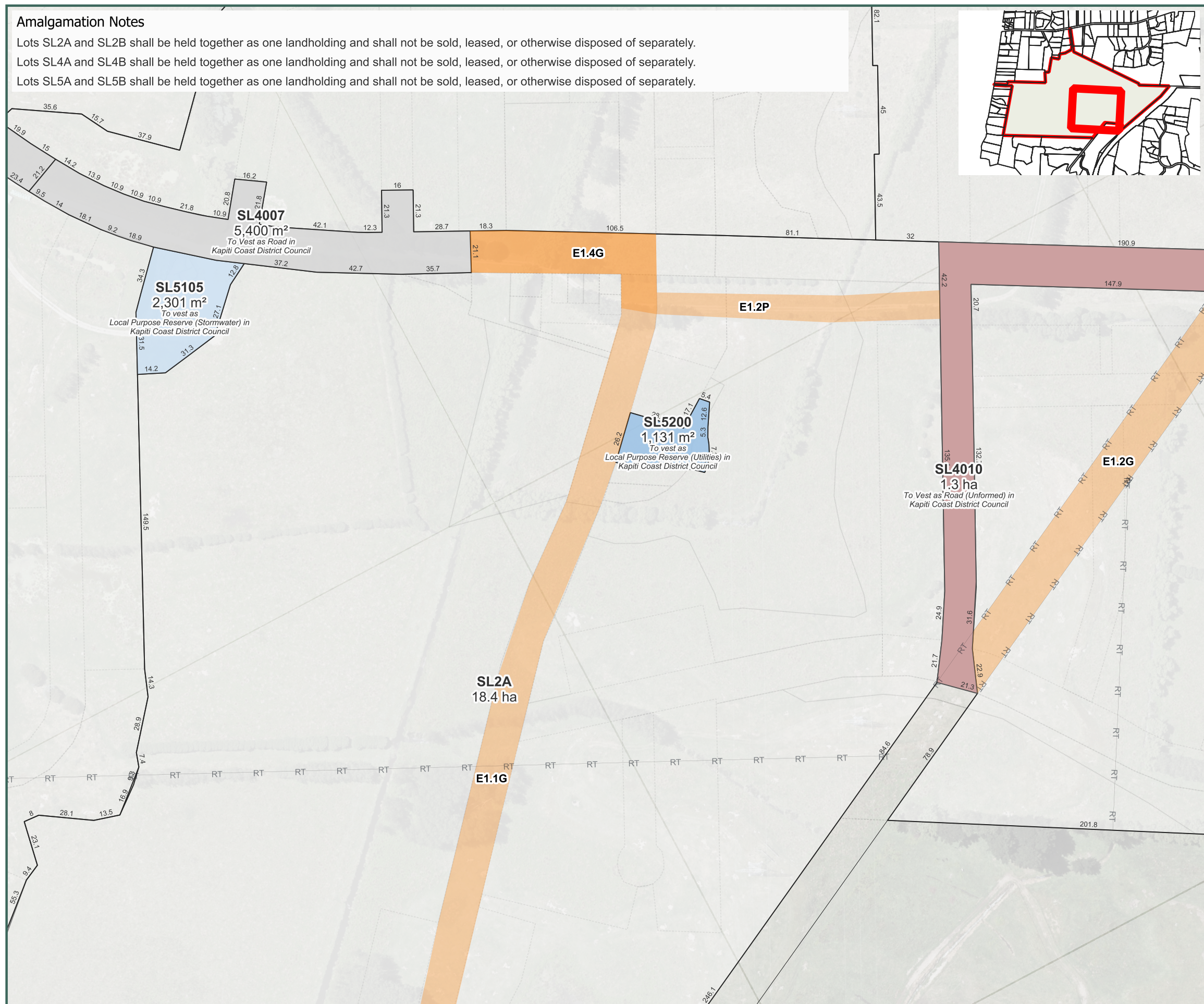
Lots SL2A and SL2B shall be held together as one landholding and shall not be sold, leased, or otherwise disposed of separately.
 Lots SL4A and SL4B shall be held together as one landholding and shall not be sold, leased, or otherwise disposed of separately.
 Lots SL5A and SL5B shall be held together as one landholding and shall not be sold, leased, or otherwise disposed of separately.



0 30 60 90 120 150 m

MEMORANDUM OF EASEMENTS – PROPOSED, RETAINED, AND IN GROSS

Ref	Benefited Lot/Grantee	Burdened Lot	Purpose
E1.1G	Kāpiti Coast District Council (in Gross)	SL2A	Right to Convey Water Right to Drain Sewage
E1.2G	Kāpiti Coast District Council (in Gross)	SL4A	Right to Convey Water Right to Drain Sewage
E1.2P	SL4A & SL4B (to be amalgamated)	SL2A	Right of Way



Notes:

- Coordinates in NZGD2000 (Wellington Circuit) and NZVD2016.
- Boundaries and titles derived from LINZ DCDB and subject to final survey.
- KCDC and GWRC planning overlays sourced from operative ArcGIS MapServer layers.
- Easements required for servicing to be created at implementation stage or as otherwise required by Kāpiti Coast District Council.

Phase 1 Superlot Plan

Sheet 9 of 14

Waikanae North Developments Ltd

Waikanae North

Peka Peka, Kapiti Coast

© Landlink Limited 2025



1 Ngaio Road, Waikanae 5036 + contactus@Landlink.nz

STAGE	PH1
REVISION	C
REVISION DETAILS	Issued For Consent

DESIGNED BY	JJH
DRAWN BY	JJH
APPROVED BY	PT

DATE 2026-03-13

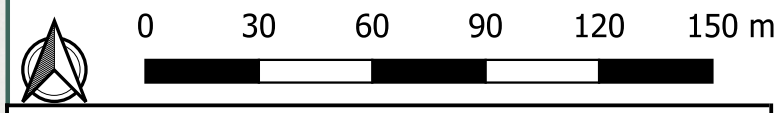
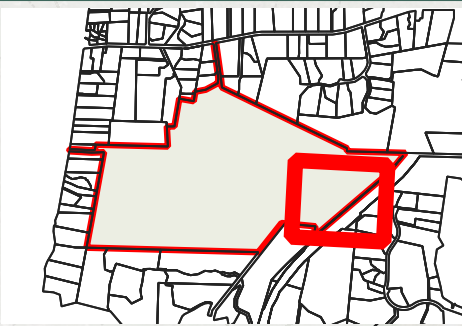
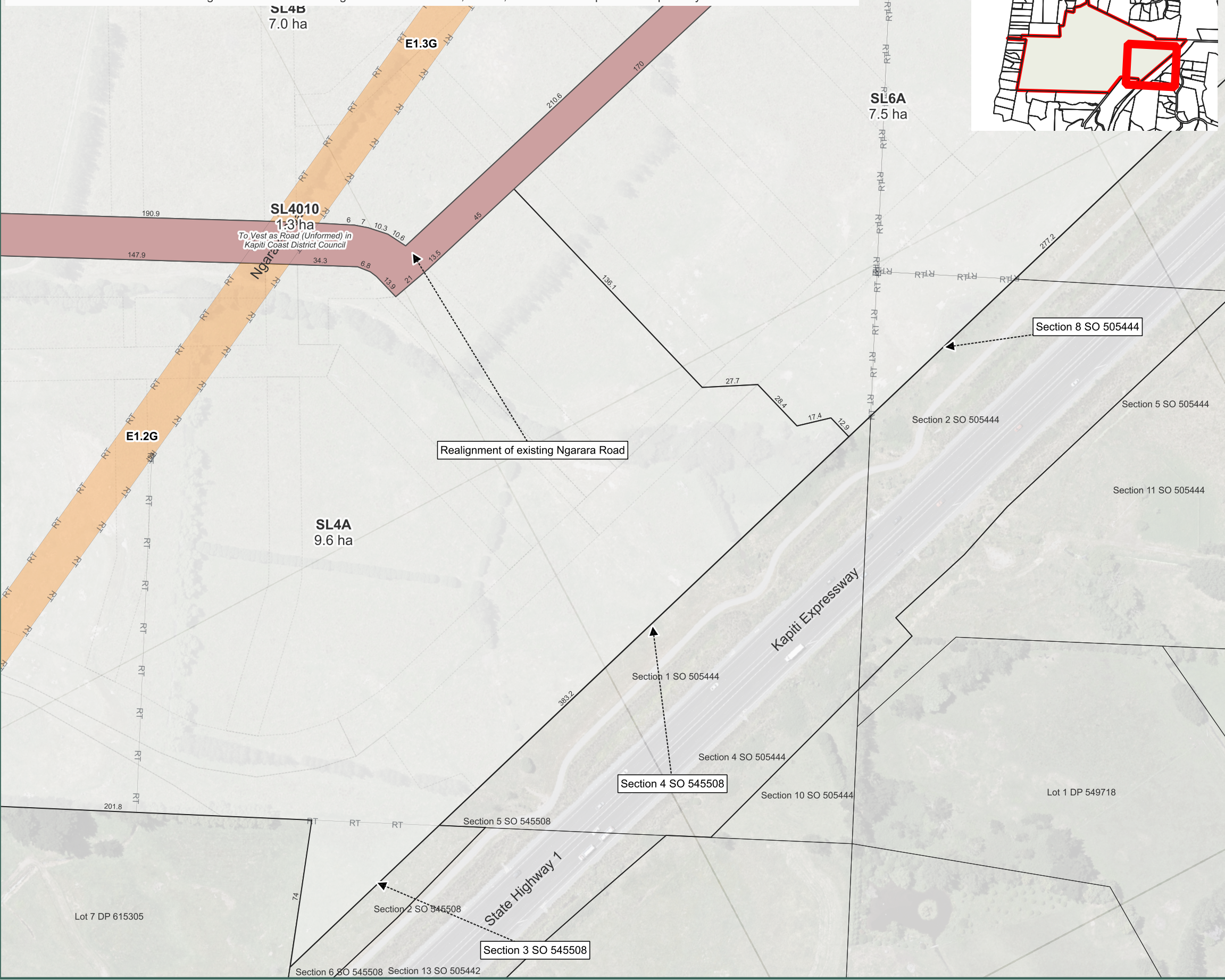
SCALE Refer Scale Bar

2911-PH1-P-12

This drawing contains data from other sources and has been prepared for a specific site and event. Landlink Limited does not accept any liability for its accuracy, content or unauthorised use.

Amalgamation Notes

Lots SL4A and SL4B shall be held together as one landholding and shall not be sold, leased, or otherwise disposed of separately.



MEMORANDUM OF EASEMENTS – PROPOSED, RETAINED, AND IN GROSS			
Ref	Benefited Lot/Grantee	Burdened Lot	Purpose
E1.2G	Kāpiti Coast District Council (in Gross)	SL4A	Right to Convey Water Right to Drain Sewage
E1.3G	Kāpiti Coast District Council (in Gross)	SL4B	Right to Convey Water Right to Drain Sewage

- Notes:
- Coordinates in NZGD2000 (Wellington Circuit) and NZVD2016.
 - Boundaries and titles derived from LINZ DCDB and subject to final survey.
 - KCDC and GWRC planning overlays sourced from operative ArcGIS MapServer layers.
 - Easements required for servicing to be created at implementation stage or as otherwise required by Kāpiti Coast District Council.

Phase 1 Superlot Plan
Sheet 10 of 14

Waikanae North Developments Ltd

Waikanae North
Peka Peka, Kapiti Coast

© Landlink Limited 2025



1 Ngaio Road, Waikanae 5036 + contactus@Landlink.nz

STAGE	PH1
REVISION	C
REVISION DETAILS	Issued For Consent

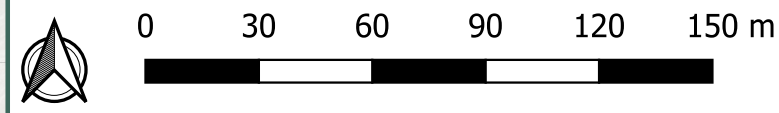
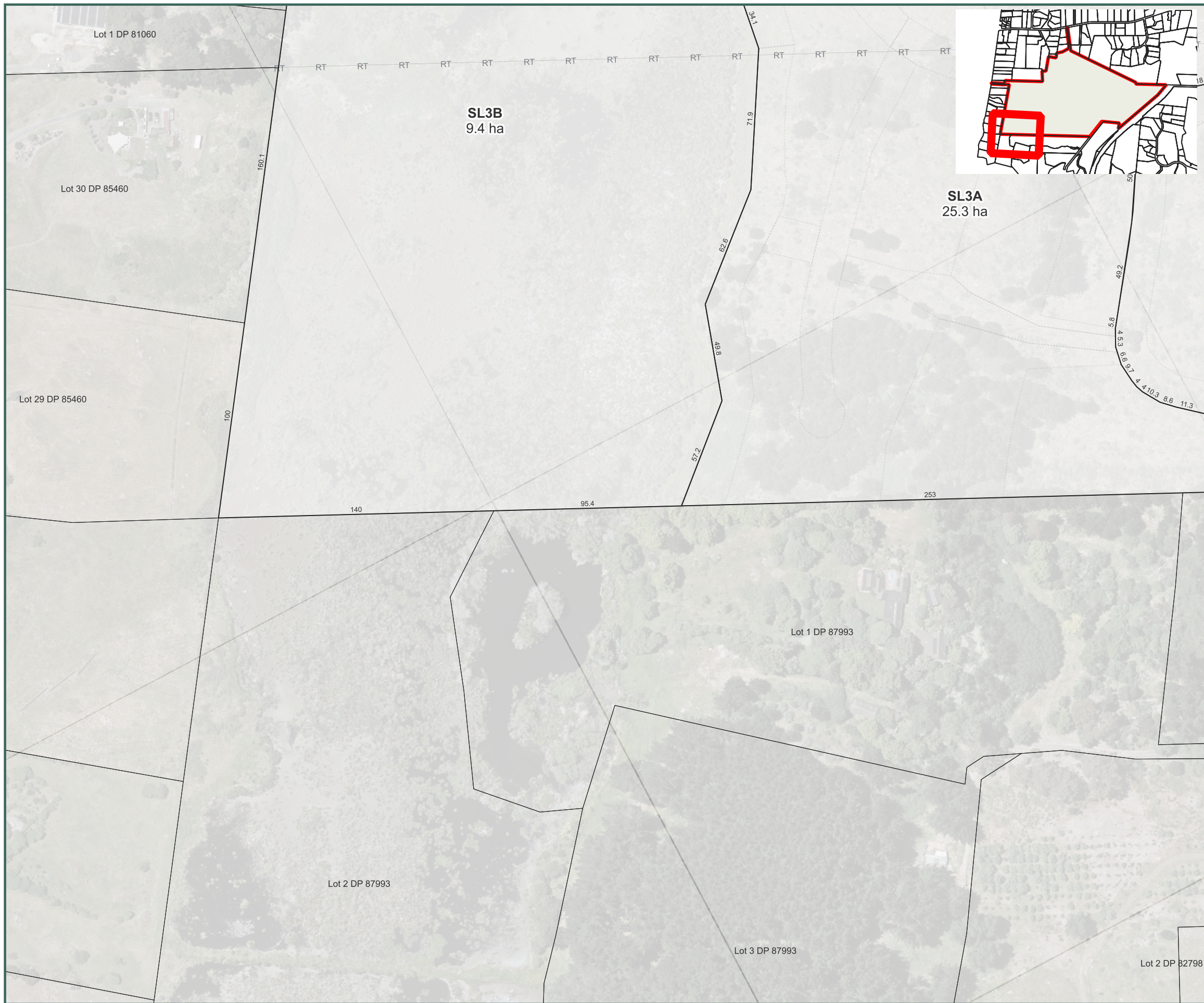
DESIGNED BY	JJH
DRAWN BY	JJH
APPROVED BY	PT

DATE 2026-03-13

SCALE Refer Scale Bar

2911-PH1-P-13

This drawing contains data from other sources and has been prepared for a specific site and event. Landlink Limited does not accept any liability for its accuracy, content or unauthorised use.



- Notes:
1. Coordinates in NZGD2000 (Wellington Circuit) and NZVD2016.
 2. Boundaries and titles derived from LINZ DCDB and subject to final survey.
 3. KCDC and GWRC planning overlays sourced from operative ArcGIS MapServer layers.
 4. Easements required for servicing to be created at implementation stage or as otherwise required by Kāpiti Coast District Council.

Phase 1 Superlot Plan
Sheet 11 of 14

Waikanae North Developments Ltd

Waikanae North
Peka Peka, Kapiti Coast

This drawing contains data from other sources and has been prepared for a specific site and event. Landlink Limited does not accept any liability for its accuracy, content or unauthorised use.

© Landlink Limited 2025



1 Ngaio Road, Waikanae 5036 + contactus@Landlink.nz

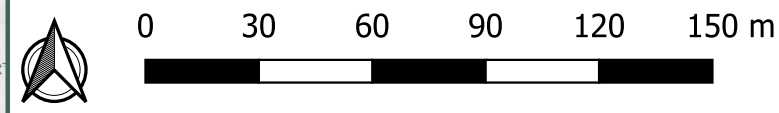
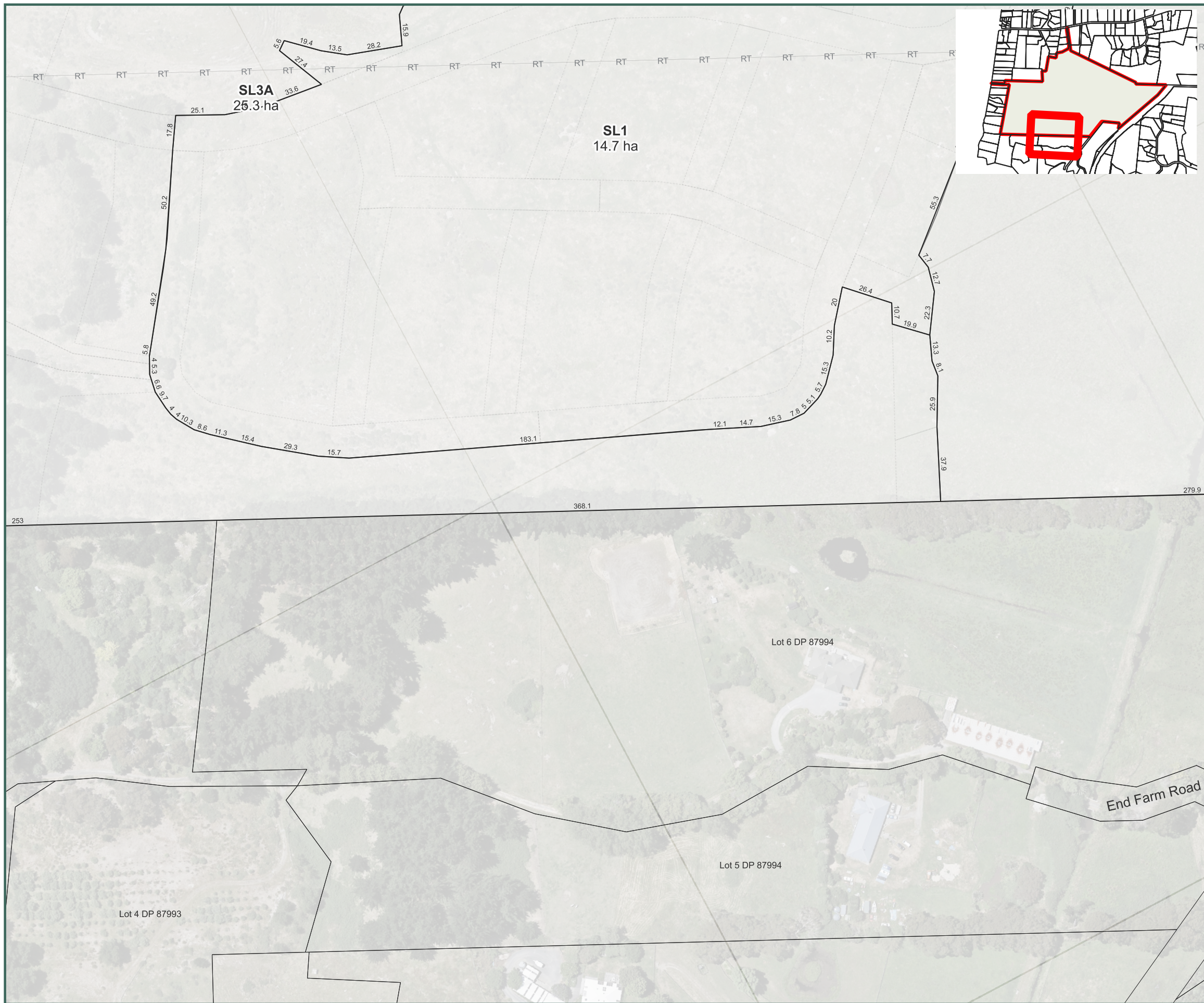
STAGE	PH1
REVISION	C
REVISION DETAILS	Issued For Consent

DESIGNED BY	JJH
DRAWN BY	JJH
APPROVED BY	PT

DATE 2026-03-13

SCALE Refer Scale Bar

2911-PH1-P-14



- Notes:
1. Coordinates in NZGD2000 (Wellington Circuit) and NZVD2016.
 2. Boundaries and titles derived from LINZ DCDB and subject to final survey.
 3. KCDC and GWRC planning overlays sourced from operative ArcGIS MapServer layers.
 4. Easements required for servicing to be created at implementation stage or as otherwise required by Kāpiti Coast District Council.

Phase 1 Superlot Plan
Sheet 12 of 14

Waikanae North Developments Ltd

Waikanae North
Peka Peka, Kapiti Coast

© Landlink Limited 2025



1 Ngaio Road, Waikanae 5036 + contactus@Landlink.nz

STAGE	PH1
REVISION	C
REVISION DETAILS	Issued For Consent

DESIGNED BY	JJH
DRAWN BY	JJH
APPROVED BY	PT

This drawing contains data from other sources and has been prepared for a specific site and event. Landlink Limited does not accept any liability for its accuracy, content or unauthorised use.

DATE 2026-03-13

SCALE Refer Scale Bar

2911-PH1-P-15