

- Notes:**
- Bulk earthworks are intended to moderate landform to provide buildable platforms, generally 0-5% grades (subject to detailed design).
 - In steeper areas works aim to achieve practical buildable platforms with transitions resolved using batters or low retaining where required.
 - Earthworks boundaries and staging are indicative; sequencing to follow certified CEMP and ESCP.
 - Levels in NZVD2016; contours indicative and subject to detailed design.
 - Concept grading surface verifies bulk earthworks feasibility; final levels to be refined at detailed design (including stormwater modelling) to confirm flood-free platforms with appropriate freeboard (KDCDC standards).
 - Cut and fill volumes are approximate and subject to construction survey.

Overall Earthworks Plan
Cut and Fill with Phasing

Waikanae North Developments Ltd

Waikanae North
Peka Peka, Kapiti Coast

© Landlink Limited 2025



1 Ngaio Road, Waikanae 5036 + contactus@Landlink.nz

STAGE	ALL
REVISION	C
REVISION DETAILS	Issued For Consent

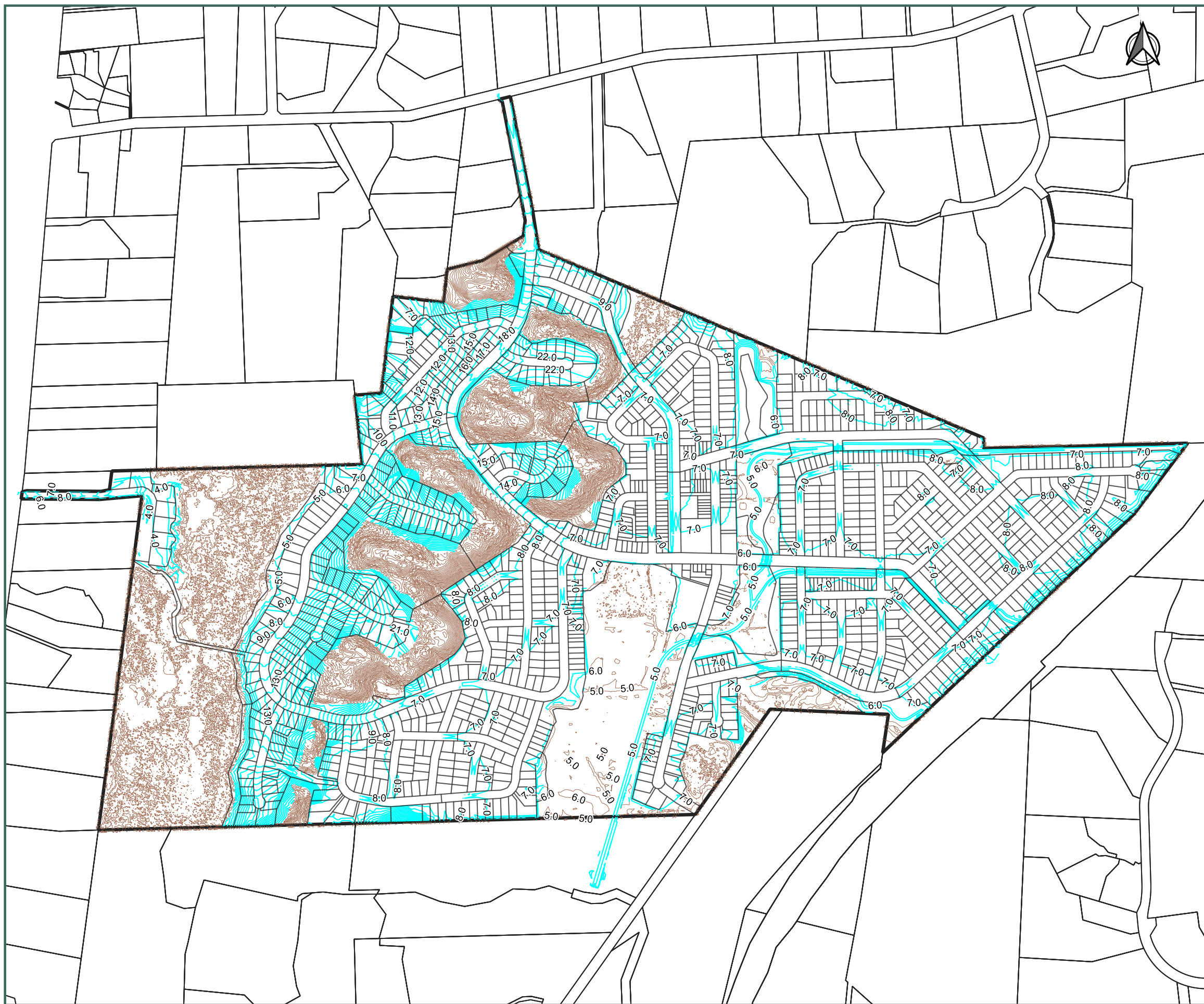
DESIGNED BY	JJH
DRAWN BY	JJH
APPROVED BY	PT

DATE 2026-03-13

SCALE Refer Scale Bar

2911-ALL-EW-200

This drawing contains data from other sources and has been prepared for a specific site and event. Landlink Limited does not accept any liability for its accuracy, content or unauthorised use.



0 100 200 300 400 500 m



Legend

- EX contours (1.0 m)
- Proposed contours (1.0 m)

Notes:

1. The concept grading surface presented in the Overall Finished Surface Levels Plan has been developed to verify bulk earthworks requirements and overall site feasibility. Final grading and levels will be refined at detailed design stage, including coordination with detailed stormwater modelling, to confirm all residential lots achieve flood-free building platforms with appropriate freeboard in accordance with KCDC standards.
2. Finished levels in NZVD 2016; contours indicative and subject to detailed design.
3. Road centrelines and tie-in levels indicative; final values to be confirmed during detailed design and construction set-out.
4. Cut and fill transitions, including any retaining, to be resolved at detailed design while maintaining approved flood-storage outcomes.

Overall Finished Surface Levels Plan

Waikanae North Developments Ltd

Waikanae North

Peka Peka, Kapiti Coast

© Landlink Limited 2025



1 Ngaio Road, Waikanae 5036 + contactus@Landlink.nz

This drawing contains data from other sources and has been prepared for a specific site and event. Landlink Limited does not accept any liability for its accuracy, content or unauthorised use.

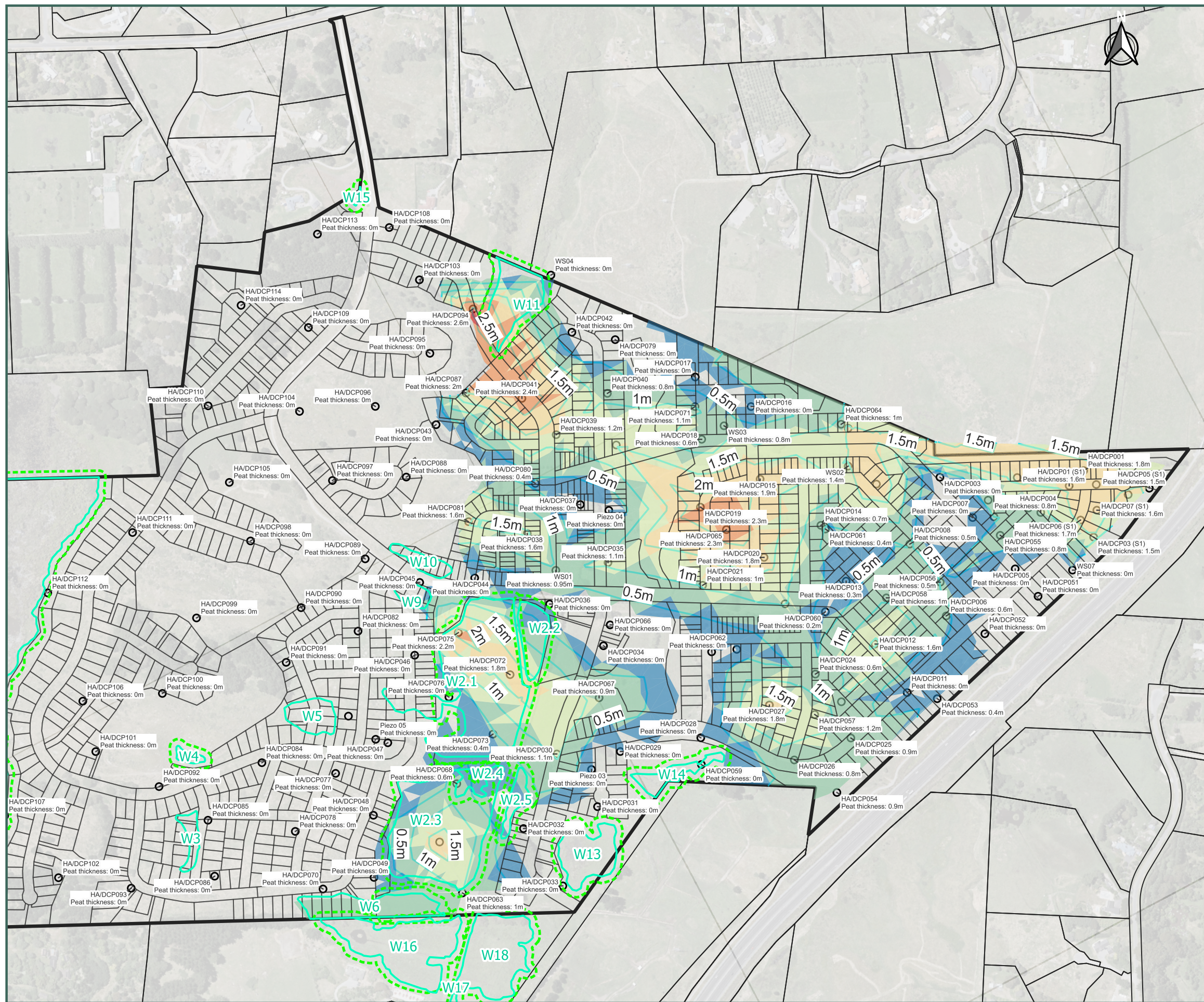
STAGE	ALL
REVISION	C
REVISION DETAILS	Issued For Consent

DESIGNED BY	JJH
DRAWN BY	JJH
APPROVED BY	PT

DATE 2026-03-13

SCALE Refer Scale Bar

2911-ALL-EW-201



0 100 200 300 400 500 m

Legend

Estimated Peat Thickness (m)

- 0.2 - 0.5
- 0.5 - 1
- 1 - 1.5
- 1.5 - 2
- 2 - 2.5
- 2.5 - 3

- Wetland Extent
- Wetland Buffer
- CGW data

Notes:

1. Groundwater data are based on CGW piezometer records and investigations (May 2025 – Mar 2026).
2. Peat depths shown are based on CPT investigations. Peat surfaces have been approximated by interpolation between observed peat depths and are indicative only.
3. Finished levels in NZVD 2016; contours indicative and subject to detailed design.
4. Peat handling and any landscape-fill works to follow the certified Construction Management Plan and be overseen by a suitably qualified professional.

Overall Peat Depth Map

Waikanae North Developments Ltd

Waikanae North

Peka Peka, Kapiti Coast

© Landlink Limited 2025



1 Ngaio Road, Waikanae 5036 + contactus@Landlink.nz

STAGE	ALL
REVISION	C
REVISION DETAILS	Issued For Consent

DESIGNED BY	JJH
DRAWN BY	JJH
APPROVED BY	PT

DATE 2026-03-13

SCALE Refer Scale Bar

2911-ALL-EW-202

This drawing contains data from other sources and has been prepared for a specific site and event. Landlink Limited does not accept any liability for its accuracy, content or unauthorised use.