

**Legend**

- Bore realignment
- KCDC Bulk Potable Supply Route (Stantec ZMP 2025)
- Principal mains (HDPE)
- KCDC Services**
- - - EX Bore Pipe Retained
- - - Abandoned Bore Pipe

**Notes:**

1. Principal water-supply mains are shown only; hydrants and service laterals are omitted.
2. Hydrant spacing is to comply with SNZ PAS 4509:2020 – Fire-fighting Water Supplies.
3. Detailed service connections are to be confirmed under detailed design in accordance with KCDC LDMR 2022 and NZS 4404.
4. Bulk supply mains shown are indicative only. Final connection points and configuration shall be confirmed during detailed design in accordance with the relevant Development Agreements.
5. Pipes and fittings are to comply with KCDC standards and approved water-supply specifications.

Bulk potable supply route shown as mapped in KCDC's Water Supply Zoning Management Plan (Stantec 2024 – 2053 Full Build-Out Scenario).

**Overall Water Supply Network Layout**

Waikanae North Developments Ltd

Waikanae North

Peka Peka, Kapiti Coast

© Landlink Limited 2025



1 Ngaio Road, Waikanae 5036 + contactus@Landlink.nz

STAGE	ALL
REVISION	C
REVISION DETAILS	Issued For Consent

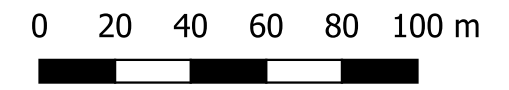
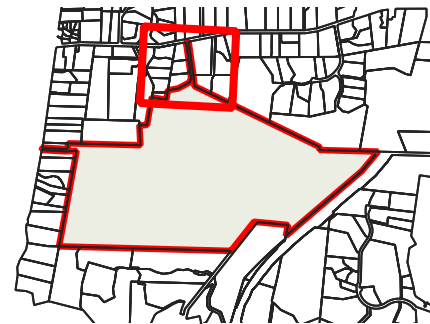
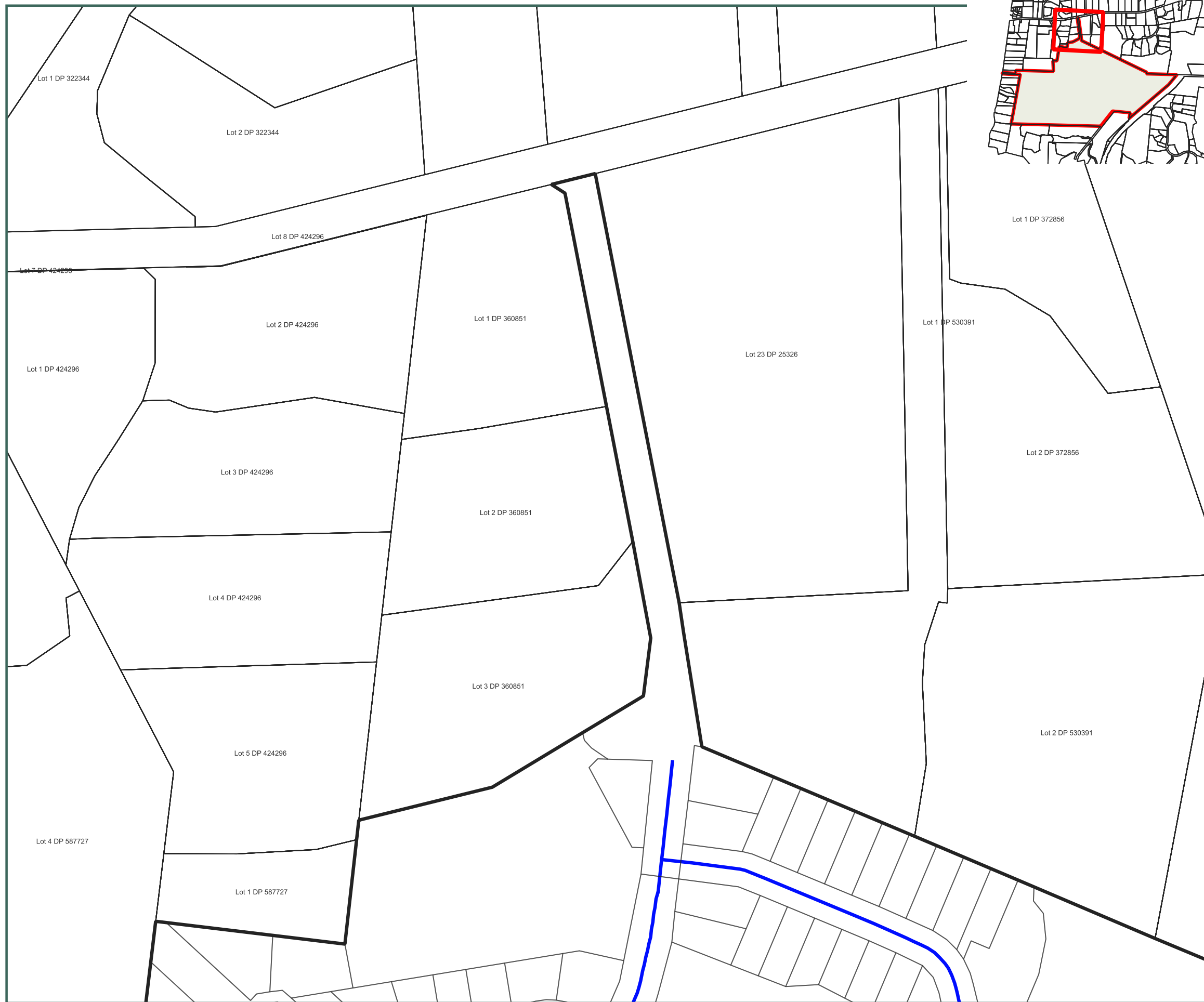
DESIGNED BY	JJH
DRAWN BY	JJH
APPROVED BY	PT

This drawing contains data from other sources and has been prepared for a specific site and event. Landlink Limited does not accept any liability for its accuracy, content or unauthorised use.

DATE 2026-03-13

SCALE Refer Scale Bar

**2911-ALL-WS-600**



Legend

- Bore realignment
- KCDC Bulk Potable Supply Route (Stantec ZMP 2024)
- Principal mains (HDPE)
- - - EX Bore Pipe Retained
- - - Abandoned Bore Pipe

Notes:

1. Principal water-supply mains are shown only; hydrants and service laterals are omitted.
2. Hydrant spacing is to comply with SNZ PAS 4509:2020 – Fire-fighting Water Supplies.
3. Bore realignments are indicative; final positions and clearances are to be confirmed with KCDC asset managers and affected landowners.
4. Detailed service connections are to be confirmed under detailed design in accordance with KCDC LDMR 2022 and NZS 4404.
5. Pipes and fittings are to comply with KCDC standards and approved water-supply specifications.

**Water Supply and Bore Realignment Plan**  
Sheet 1 of 13

Waikanae North Developments Ltd

Waikanae North  
Peka Peka, Kapiti Coast

© Landlink Limited 2025



1 Ngaio Road, Waikanae 5036 + contactus@Landlink.nz

This drawing contains data from other sources and has been prepared for a specific site and event. Landlink Limited does not accept any liability for its accuracy, content or unauthorised use.

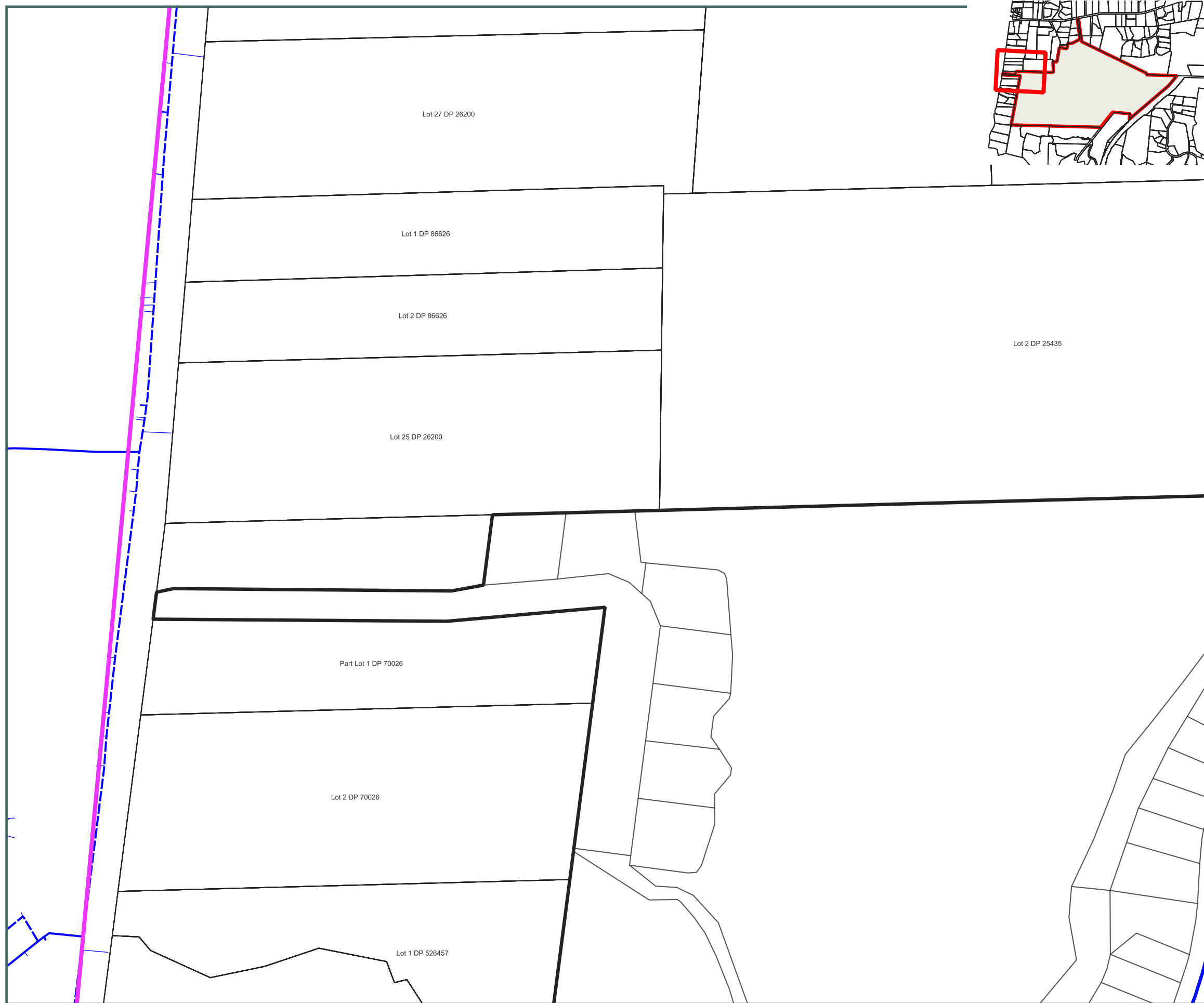
STAGE	ALL
REVISION	C
REVISION DETAILS	Issued For Consent

DESIGNED BY	JJH
DRAWN BY	JJH
APPROVED BY	PT

DATE 2026-03-13

SCALE Refer Scale Bar

2911-ALL-WS-601



0 20 40 60 80 100 m



Legend

- Bore realignment
- KCDC Bulk Potable Supply Route (Stantec ZMP 2024)
- Principal mains (HDPE)
- - - EX Bore Pipe Retained
- - - Abandoned Bore Pipe

Notes:

1. Principal water-supply mains are shown only; hydrants and service laterals are omitted.
2. Hydrant spacing is to comply with SNZ PAS 4509:2020 – Fire-fighting Water Supplies.
3. Bore realignments are indicative; final positions and clearances are to be confirmed with KCDC asset managers and affected landowners.
4. Detailed service connections are to be confirmed under detailed design in accordance with KCDC LDMR 2022 and NZS 4404.
5. Pipes and fittings are to comply with KCDC standards and approved water-supply specifications.

**Water Supply and Bore Realignment Plan**

Sheet 2 of 13

Waikanae North Developments Ltd

Waikanae North

Peka Peka, Kapiti Coast

This drawing contains data from other sources and has been prepared for a specific site and event. Landlink Limited does not accept any liability for its accuracy, content or unauthorised use.

© Landlink Limited 2025



1 Ngaio Road, Waikanae 5036 + contactus@Landlink.nz

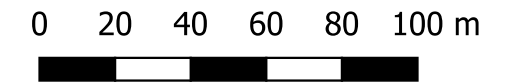
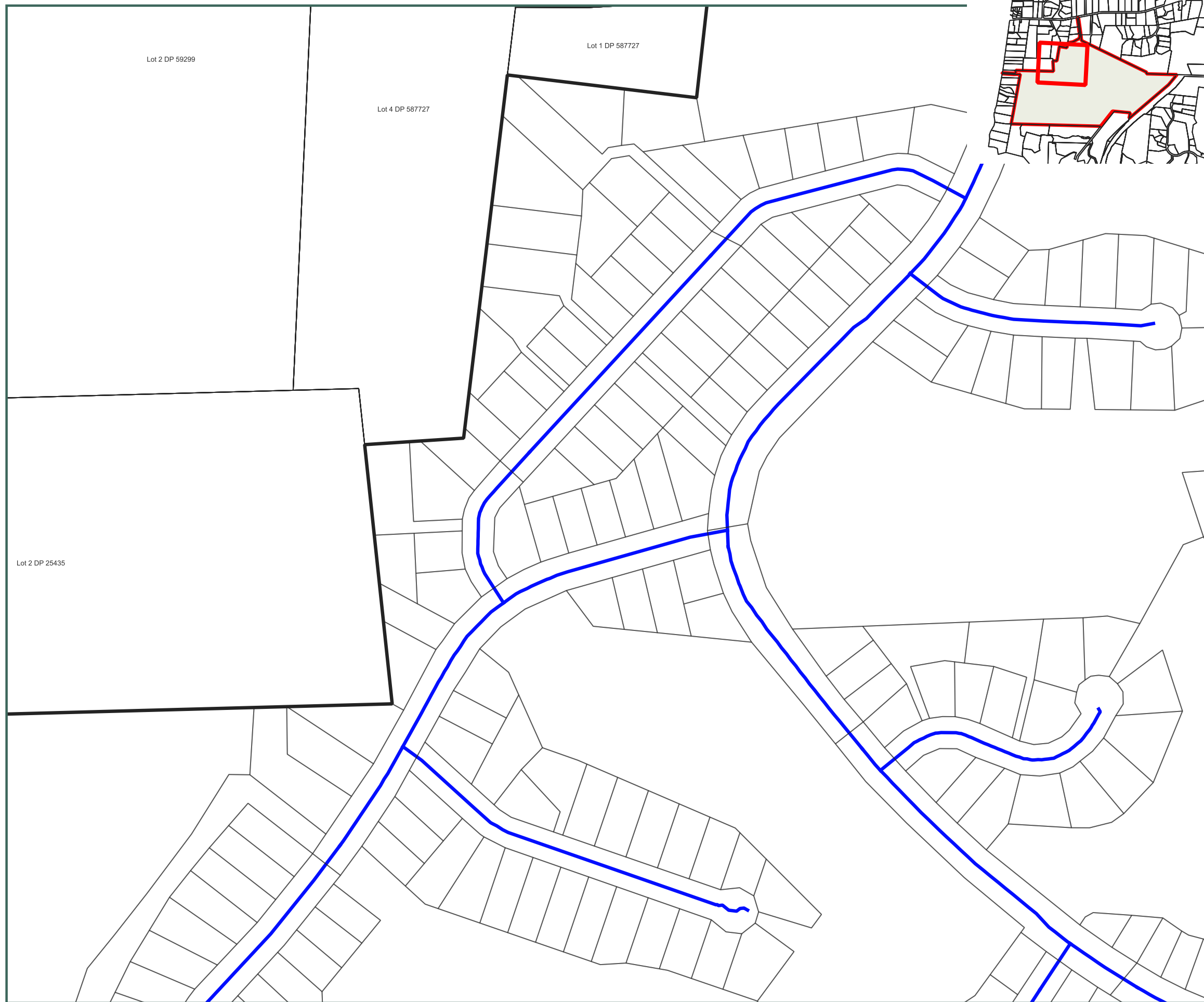
STAGE	ALL
REVISION	C
REVISION DETAILS	Issued For Consent

DESIGNED BY	JJH
DRAWN BY	JJH
APPROVED BY	PT

DATE 2026-03-13

SCALE Refer Scale Bar

**2911-ALL-WS-602**



Legend

- Bore realignment
- KCDC Bulk Potable Supply Route (Stantec ZMP 2024)
- Principal mains (HDPE)
- - - EX Bore Pipe Retained
- - - Abandoned Bore Pipe

Notes:

1. Principal water-supply mains are shown only; hydrants and service laterals are omitted.
2. Hydrant spacing is to comply with SNZ PAS 4509:2020 – Fire-fighting Water Supplies.
3. Bore realignments are indicative; final positions and clearances are to be confirmed with KCDC asset managers and affected landowners.
4. Detailed service connections are to be confirmed under detailed design in accordance with KCDC LDMR 2022 and NZS 4404.
5. Pipes and fittings are to comply with KCDC standards and approved water-supply specifications.

**Water Supply and Bore Realignment Plan**

Sheet 3 of 13

Waikanae North Developments Ltd

Waikanae North

Peka Peka, Kapiti Coast

© Landlink Limited 2025



1 Ngaio Road, Waikanae 5036 + contactus@Landlink.nz

STAGE	ALL
REVISION	C
REVISION DETAILS	Issued For Consent

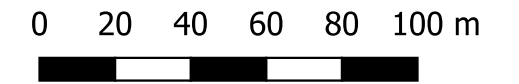
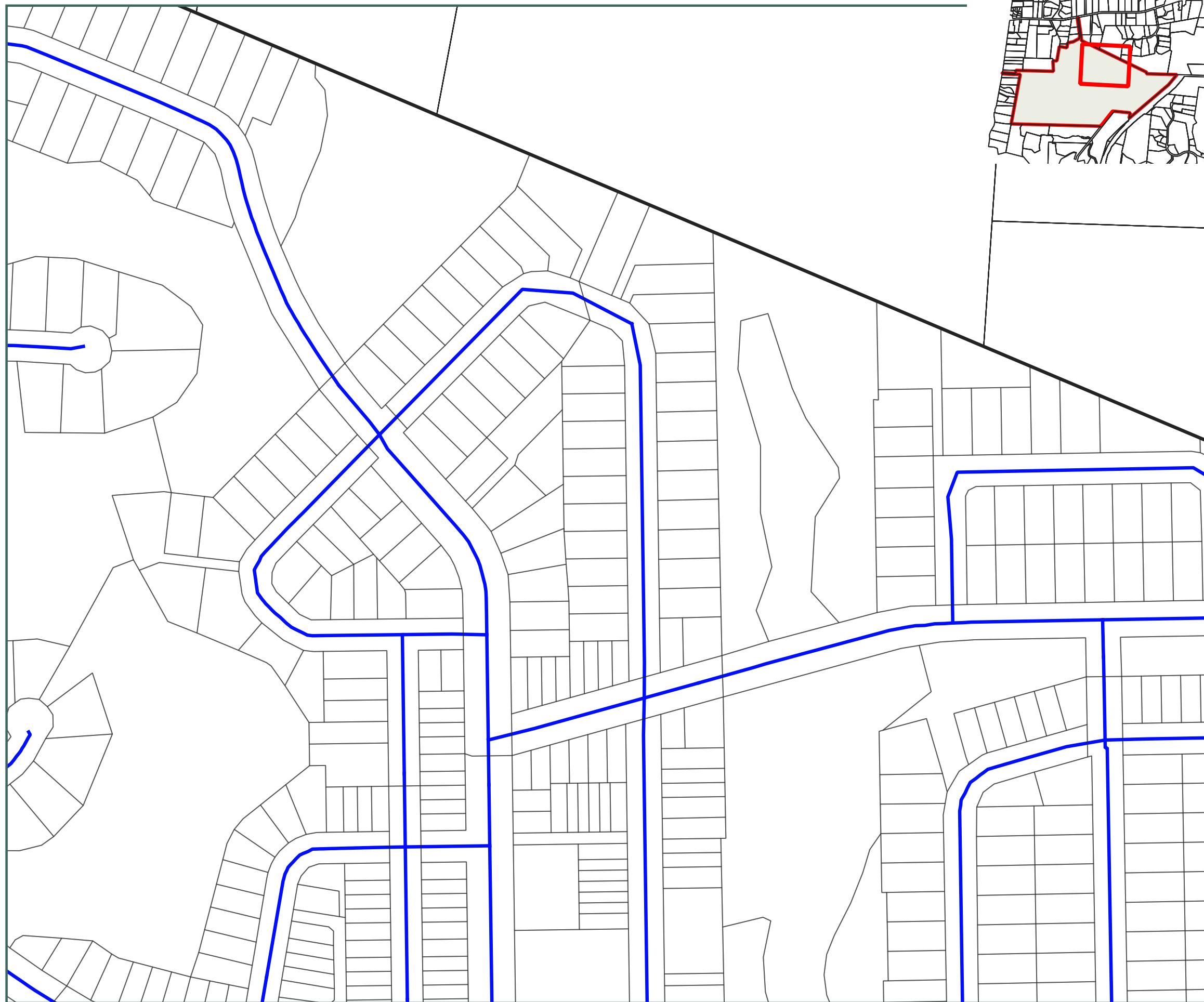
DESIGNED BY	JJH
DRAWN BY	JJH
APPROVED BY	PT

This drawing contains data from other sources and has been prepared for a specific site and event. Landlink Limited does not accept any liability for its accuracy, content or unauthorised use.

DATE 2026-03-13

SCALE Refer Scale Bar

**2911-ALL-WS-603**



Legend

- Bore realignment
- KCDC Bulk Potable Supply Route (Stantec ZMP 2024)
- Principal mains (HDPE)
- - - EX Bore Pipe Retained
- - - Abandoned Bore Pipe

Notes:

1. Principal water-supply mains are shown only; hydrants and service laterals are omitted.
2. Hydrant spacing is to comply with SNZ PAS 4509:2020 – Fire-fighting Water Supplies.
3. Bore realignments are indicative; final positions and clearances are to be confirmed with KCDC asset managers and affected landowners.
4. Detailed service connections are to be confirmed under detailed design in accordance with KCDC LDMR 2022 and NZS 4404.
5. Pipes and fittings are to comply with KCDC standards and approved water-supply specifications.

**Water Supply and Bore Realignment Plan**

Sheet 4 of 13

Waikanae North Developments Ltd

Waikanae North

Peka Peka, Kapiti Coast

© Landlink Limited 2025



1 Ngaio Road, Waikanae 5036 + contactus@Landlink.nz

STAGE	ALL
REVISION	C
REVISION DETAILS	Issued For Consent

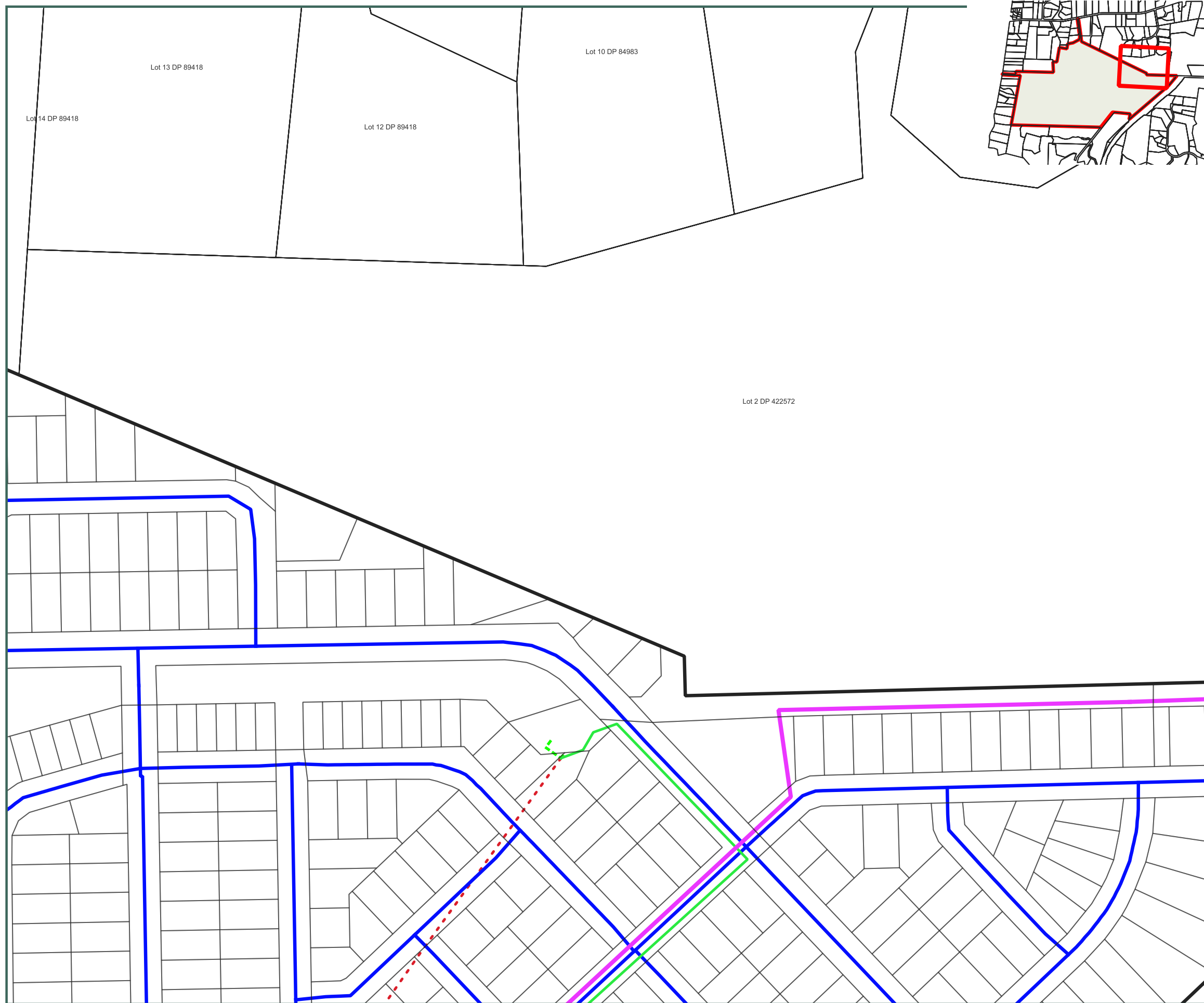
DESIGNED BY	JJH
DRAWN BY	JJH
APPROVED BY	PT

This drawing contains data from other sources and has been prepared for a specific site and event. Landlink Limited does not accept any liability for its accuracy, content or unauthorised use.

DATE 2026-03-13

SCALE Refer Scale Bar

**2911-ALL-WS-604**



0 20 40 60 80 100 m



Legend

- Bore realignment
- KCDC Bulk Potable Supply Route (Stantec ZMP 2024)
- Principal mains (HDPE)
- - - EX Bore Pipe Retained
- - - Abandoned Bore Pipe

Notes:

1. Principal water-supply mains are shown only; hydrants and service laterals are omitted.
2. Hydrant spacing is to comply with SNZ PAS 4509:2020 – Fire-fighting Water Supplies.
3. Bore realignments are indicative; final positions and clearances are to be confirmed with KCDC asset managers and affected landowners.
4. Detailed service connections are to be confirmed under detailed design in accordance with KCDC LDMR 2022 and NZS 4404.
5. Pipes and fittings are to comply with KCDC standards and approved water-supply specifications.

Water Supply and Bore Realignment Plan

Sheet 5 of 13

Waikanae North Developments Ltd

Waikanae North

Peka Peka, Kapiti Coast

This drawing contains data from other sources and has been prepared for a specific site and event. Landlink Limited does not accept any liability for its accuracy, content or unauthorised use.

© Landlink Limited 2025



1 Ngaio Road, Waikanae 5036 + contactus@Landlink.nz

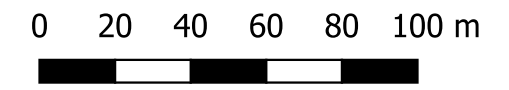
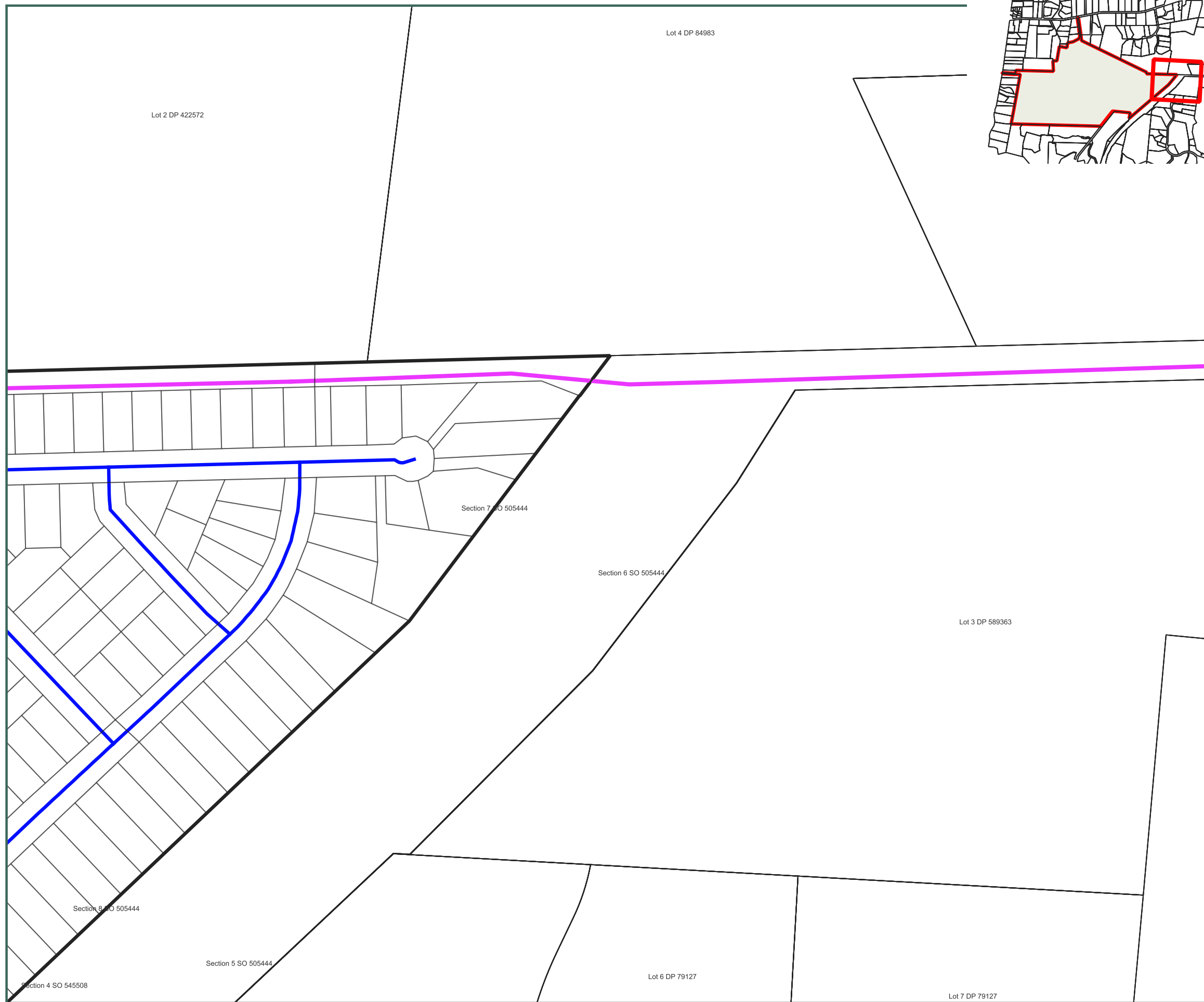
STAGE	ALL
REVISION	C
REVISION DETAILS	Issued For Consent

DESIGNED BY	JJH
DRAWN BY	JJH
APPROVED BY	PT

DATE 2026-03-13

SCALE Refer Scale Bar

**2911-ALL-WS-605**



Legend

- Bore realignment
- KCDC Bulk Potable Supply Route (Stantec ZMP 2024)
- Principal mains (HDPE)
- - - EX Bore Pipe Retained
- - - Abandoned Bore Pipe

Notes:

1. Principal water-supply mains are shown only; hydrants and service laterals are omitted.
2. Hydrant spacing is to comply with SNZ PAS 4509:2020 – Fire-fighting Water Supplies.
3. Bore realignments are indicative; final positions and clearances are to be confirmed with KCDC asset managers and affected landowners.
4. Detailed service connections are to be confirmed under detailed design in accordance with KCDC LDMR 2022 and NZS 4404.
5. Pipes and fittings are to comply with KCDC standards and approved water-supply specifications.

**Water Supply and Bore Realignment Plan**

Sheet 6 of 13

Waikanae North Developments Ltd

Waikanae North

Peka Peka, Kapiti Coast

© Landlink Limited 2025



1 Ngaio Road, Waikanae 5036 + contactus@Landlink.nz

*This drawing contains data from other sources and has been prepared for a specific site and event. Landlink Limited does not accept any liability for its accuracy, content or unauthorised use.*

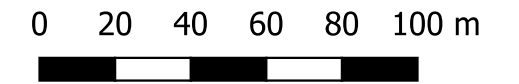
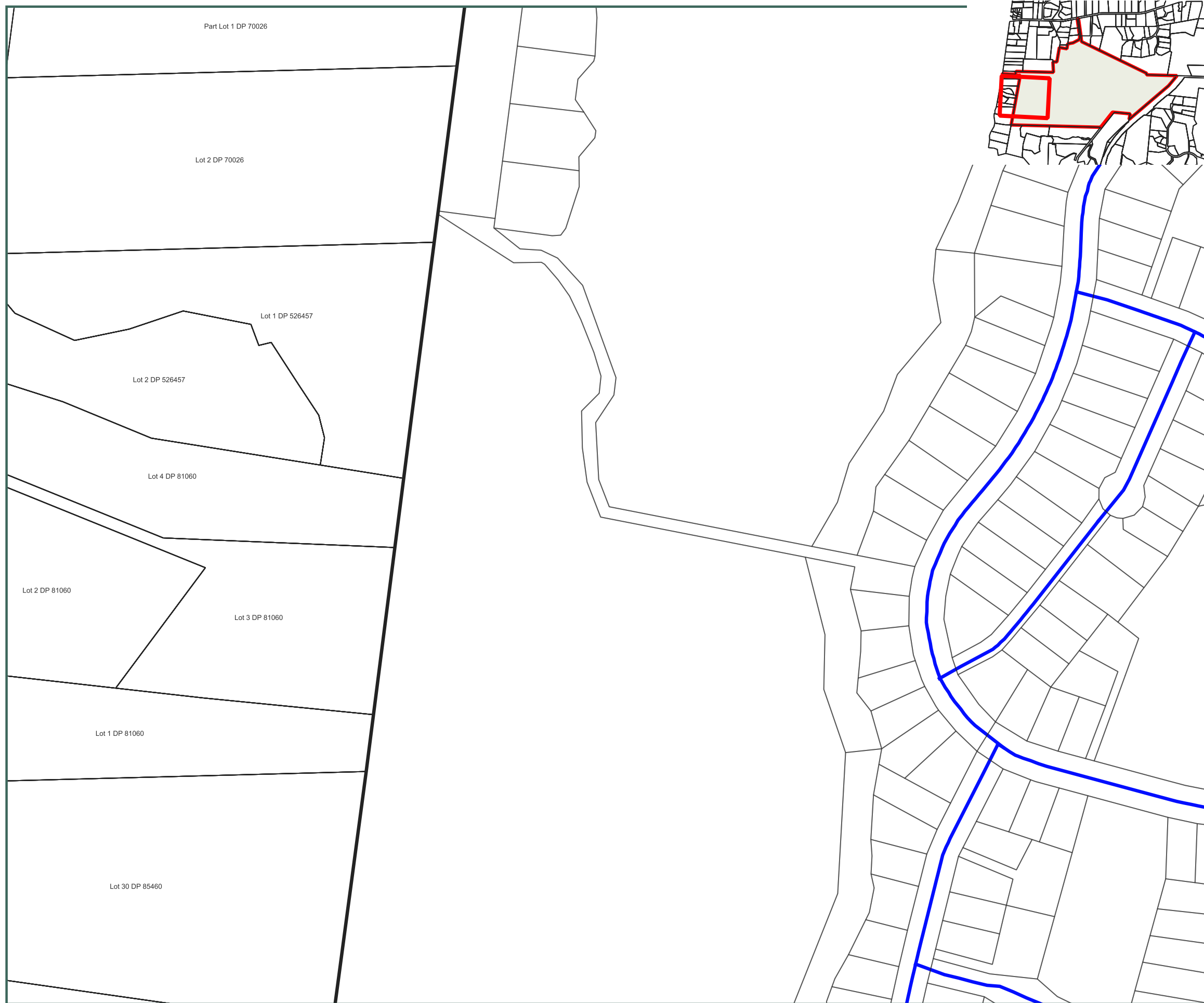
STAGE	ALL
REVISION	C
REVISION DETAILS	Issued For Consent

DESIGNED BY	JJH
DRAWN BY	JJH
APPROVED BY	PT

DATE 2026-03-13

SCALE Refer Scale Bar

**2911-ALL-WS-606**



Legend

- Bore realignment
- KCDC Bulk Potable Supply Route (Stantec ZMP 2024)
- Principal mains (HDPE)
- - - EX Bore Pipe Retained
- - - Abandoned Bore Pipe

Notes:

1. Principal water-supply mains are shown only; hydrants and service laterals are omitted.
2. Hydrant spacing is to comply with SNZ PAS 4509:2020 – Fire-fighting Water Supplies.
3. Bore realignments are indicative; final positions and clearances are to be confirmed with KCDC asset managers and affected landowners.
4. Detailed service connections are to be confirmed under detailed design in accordance with KCDC LDMR 2022 and NZS 4404.
5. Pipes and fittings are to comply with KCDC standards and approved water-supply specifications.

**Water Supply and Bore Realignment Plan**

Sheet 7 of 13

Waikanae North Developments Ltd

Waikanae North

Peka Peka, Kapiti Coast

This drawing contains data from other sources and has been prepared for a specific site and event. Landlink Limited does not accept any liability for its accuracy, content or unauthorised use.

© Landlink Limited 2025



1 Ngaio Road, Waikanae 5036 + contactus@Landlink.nz

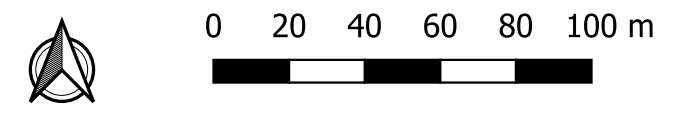
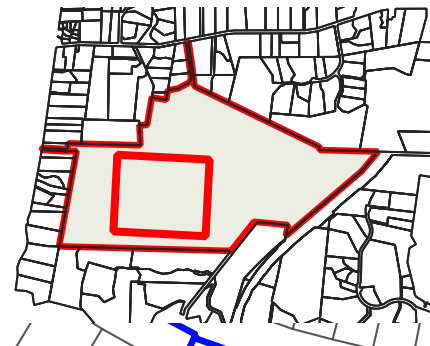
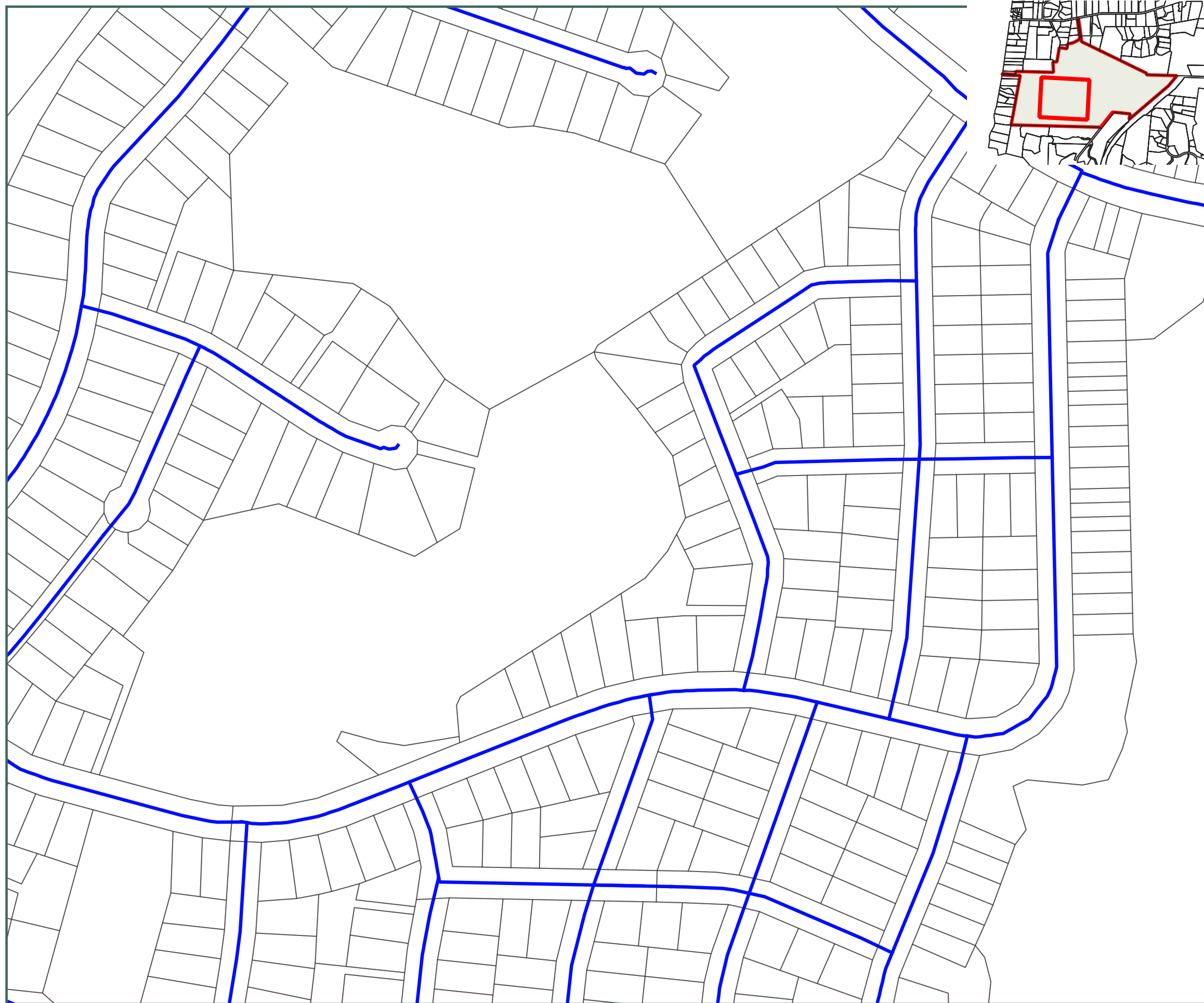
STAGE	ALL
REVISION	C
REVISION DETAILS	Issued For Consent

DESIGNED BY	JJH
DRAWN BY	JJH
APPROVED BY	PT

DATE 2026-03-13

SCALE Refer Scale Bar

**2911-ALL-WS-607**



- Legend
- Bore realignment
  - KCDC Bulk Potable Supply Route (Stantec ZMP 2024)
  - Principal mains (HDPE)
  - - - EX Bore Pipe Retained
  - - - Abandoned Bore Pipe

- Notes:
1. Principal water-supply mains are shown only; hydrants and service laterals are omitted.
  2. Hydrant spacing is to comply with SNZ PAS 4509:2020 – Fire-fighting Water Supplies.
  3. Bore realignments are indicative; final positions and clearances are to be confirmed with KCDC asset managers and affected landowners.
  4. Detailed service connections are to be confirmed under detailed design in accordance with KCDC LDMR 2022 and NZS 4404.
  5. Pipes and fittings are to comply with KCDC standards and approved water-supply specifications.

**Water Supply and Bore Realignment Plan**  
Sheet 8 of 13

Waikanae North Developments Ltd

Waikanae North  
Peka Peka, Kapiti Coast

© Landlink Limited 2025



1 Ngaio Road, Waikanae 5036 + contactus@Landlink.nz

This drawing contains data from other sources and has been prepared for a specific site and event. Landlink Limited does not accept any liability for its accuracy, content or unauthorised use.

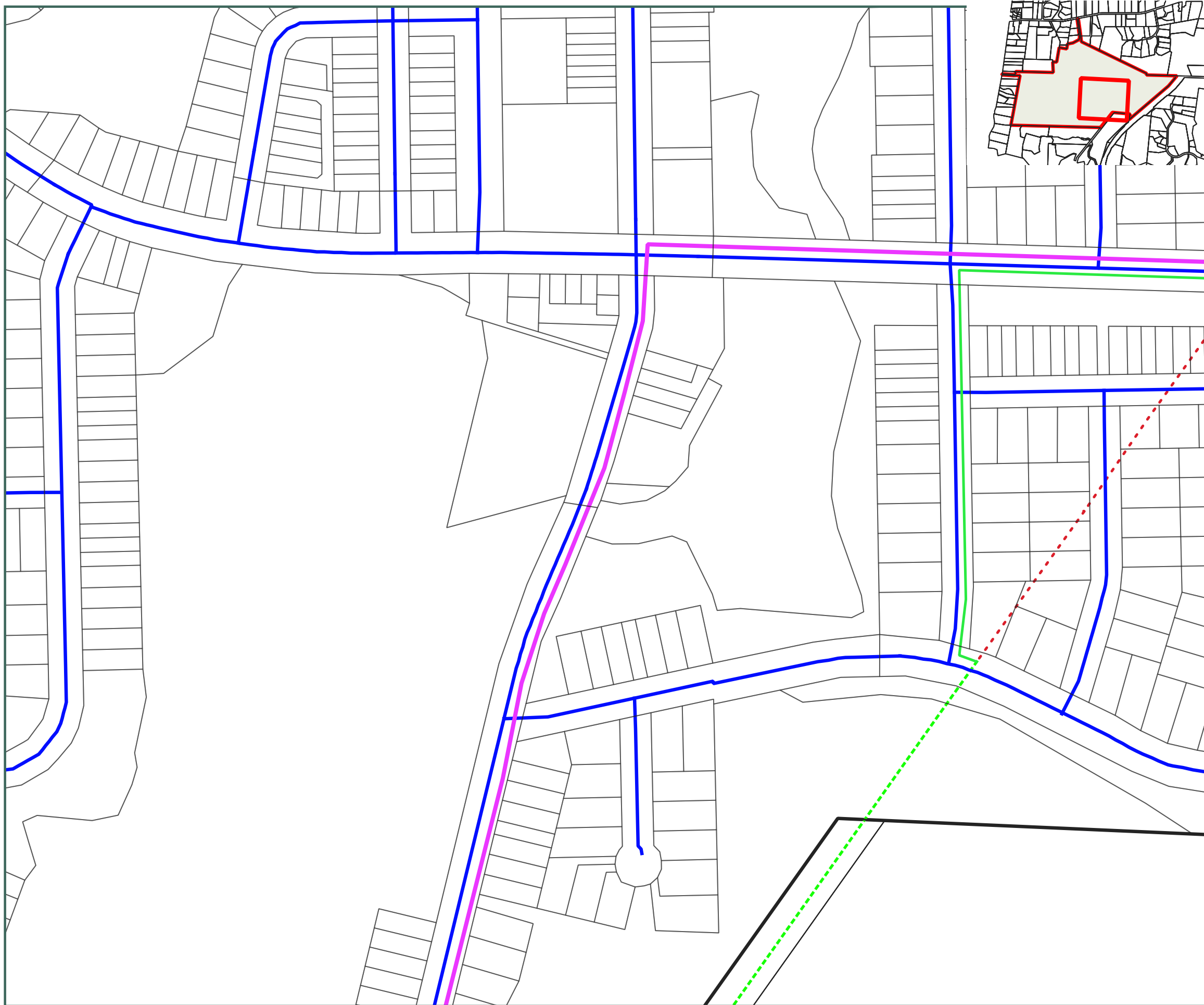
STAGE	ALL
REVISION	C
REVISION DETAILS	Issued For Consent

DESIGNED BY	JJH
DRAWN BY	JJH
APPROVED BY	PT

DATE 2026-03-13

SCALE Refer Scale Bar

**2911-ALL-WS-608**



0 20 40 60 80 100 m



Legend

- Bore realignment
- KCDC Bulk Potable Supply Route (Stantec ZMP 2024)
- Principal mains (HDPE)
- - - EX Bore Pipe Retained
- - - Abandoned Bore Pipe

Notes:

1. Principal water-supply mains are shown only; hydrants and service laterals are omitted.
2. Hydrant spacing is to comply with SNZ PAS 4509:2020 – Fire-fighting Water Supplies.
3. Bore realignments are indicative; final positions and clearances are to be confirmed with KCDC asset managers and affected landowners.
4. Detailed service connections are to be confirmed under detailed design in accordance with KCDC LDMR 2022 and NZS 4404.
5. Pipes and fittings are to comply with KCDC standards and approved water-supply specifications.

Water Supply and Bore Realignment Plan

Sheet 9 of 13

Waikanae North Developments Ltd

Waikanae North

Peka Peka, Kapiti Coast

© Landlink Limited 2025



1 Ngaio Road, Waikanae 5036 + contactus@Landlink.nz

This drawing contains data from other sources and has been prepared for a specific site and event. Landlink Limited does not accept any liability for its accuracy, content or unauthorised use.

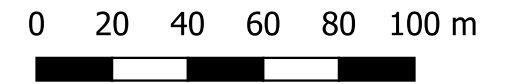
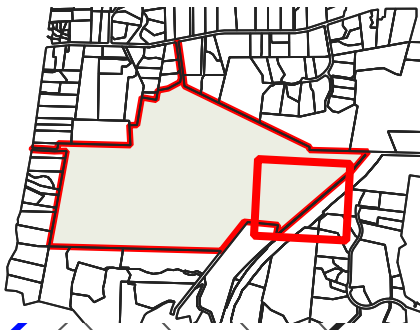
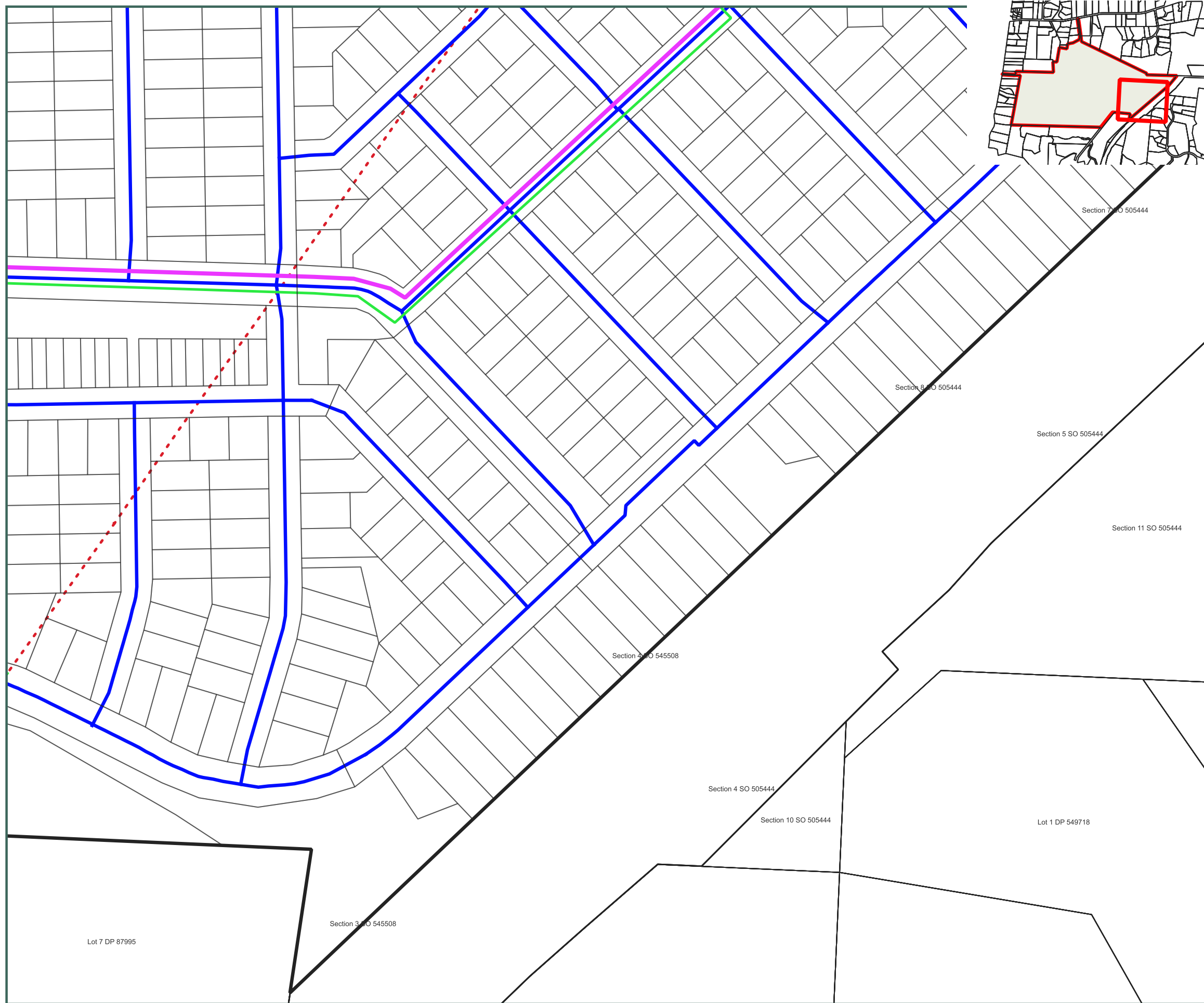
STAGE	ALL
REVISION	C
REVISION DETAILS	Issued For Consent

DESIGNED BY	JJH
DRAWN BY	JJH
APPROVED BY	PT

DATE 2026-03-13

SCALE Refer Scale Bar

**2911-ALL-WS-609**



Legend

- Bore realignment
- KCDC Bulk Potable Supply Route (Stantec ZMP 2024)
- Principal mains (HDPE)
- - - EX Bore Pipe Retained
- - - Abandoned Bore Pipe

Notes:

1. Principal water-supply mains are shown only; hydrants and service laterals are omitted.
2. Hydrant spacing is to comply with SNZ PAS 4509:2020 – Fire-fighting Water Supplies.
3. Bore realignments are indicative; final positions and clearances are to be confirmed with KCDC asset managers and affected landowners.
4. Detailed service connections are to be confirmed under detailed design in accordance with KCDC LDMR 2022 and NZS 4404.
5. Pipes and fittings are to comply with KCDC standards and approved water-supply specifications.

**Water Supply and Bore Realignment Plan**

Sheet 10 of 13

Waikanae North Developments Ltd

Waikanae North

Peka Peka, Kapiti Coast

© Landlink Limited 2025



1 Ngaio Road, Waikanae 5036 + [contactus@Landlink.nz](mailto:contactus@Landlink.nz)

STAGE	ALL
REVISION	C
REVISION DETAILS	Issued For Consent

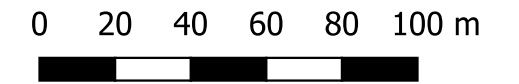
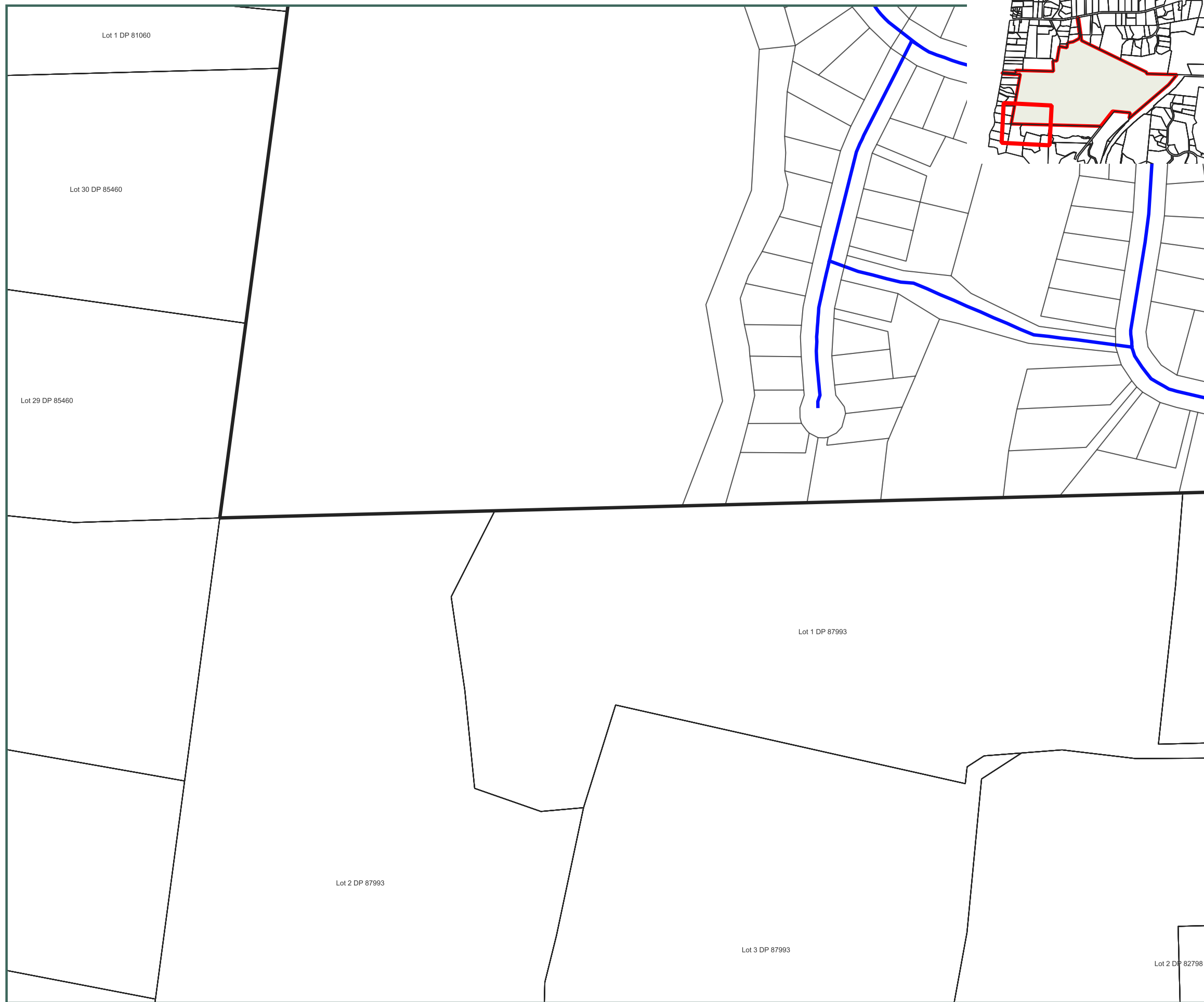
DESIGNED BY	JJH
DRAWN BY	JJH
APPROVED BY	PT

This drawing contains data from other sources and has been prepared for a specific site and event. Landlink Limited does not accept any liability for its accuracy, content or unauthorised use.

DATE 2026-03-13

SCALE Refer Scale Bar

**2911-ALL-WS-610**



Legend

- Bore realignment
- KCDC Bulk Potable Supply Route (Stantec ZMP 2024)
- Principal mains (HDPE)
- - - EX Bore Pipe Retained
- - - Abandoned Bore Pipe

Notes:

1. Principal water-supply mains are shown only; hydrants and service laterals are omitted.
2. Hydrant spacing is to comply with SNZ PAS 4509:2020 – Fire-fighting Water Supplies.
3. Bore realignments are indicative; final positions and clearances are to be confirmed with KCDC asset managers and affected landowners.
4. Detailed service connections are to be confirmed under detailed design in accordance with KCDC LDMR 2022 and NZS 4404.
5. Pipes and fittings are to comply with KCDC standards and approved water-supply specifications.

**Water Supply and Bore Realignment Plan**

Sheet 11 of 13

Waikanae North Developments Ltd

Waikanae North

Peka Peka, Kapiti Coast

© Landlink Limited 2025



1 Ngaio Road, Waikanae 5036 + contactus@Landlink.nz

STAGE	ALL
REVISION	C
REVISION DETAILS	Issued For Consent

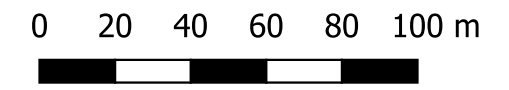
DESIGNED BY	JJH
DRAWN BY	JJH
APPROVED BY	PT

This drawing contains data from other sources and has been prepared for a specific site and event. Landlink Limited does not accept any liability for its accuracy, content or unauthorised use.

DATE 2026-03-13

SCALE Refer Scale Bar

**2911-ALL-WS-611**



Legend

- Bore realignment
- KCDC Bulk Potable Supply Route (Stantec ZMP 2024)
- Principal mains (HDPE)
- - - EX Bore Pipe Retained
- - - Abandoned Bore Pipe

Notes:

1. Principal water-supply mains are shown only; hydrants and service laterals are omitted.
2. Hydrant spacing is to comply with SNZ PAS 4509:2020 – Fire-fighting Water Supplies.
3. Bore realignments are indicative; final positions and clearances are to be confirmed with KCDC asset managers and affected landowners.
4. Detailed service connections are to be confirmed under detailed design in accordance with KCDC LDMR 2022 and NZS 4404.
5. Pipes and fittings are to comply with KCDC standards and approved water-supply specifications.

**Water Supply and Bore Realignment Plan**  
Sheet 12 of 13

Waikanae North Developments Ltd

Waikanae North  
Peka Peka, Kapiti Coast

© Landlink Limited 2025



1 Ngaio Road, Waikanae 5036 + contactus@Landlink.nz

This drawing contains data from other sources and has been prepared for a specific site and event. Landlink Limited does not accept any liability for its accuracy, content or unauthorised use.

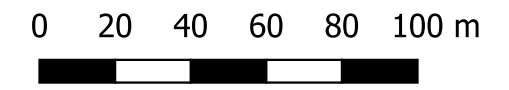
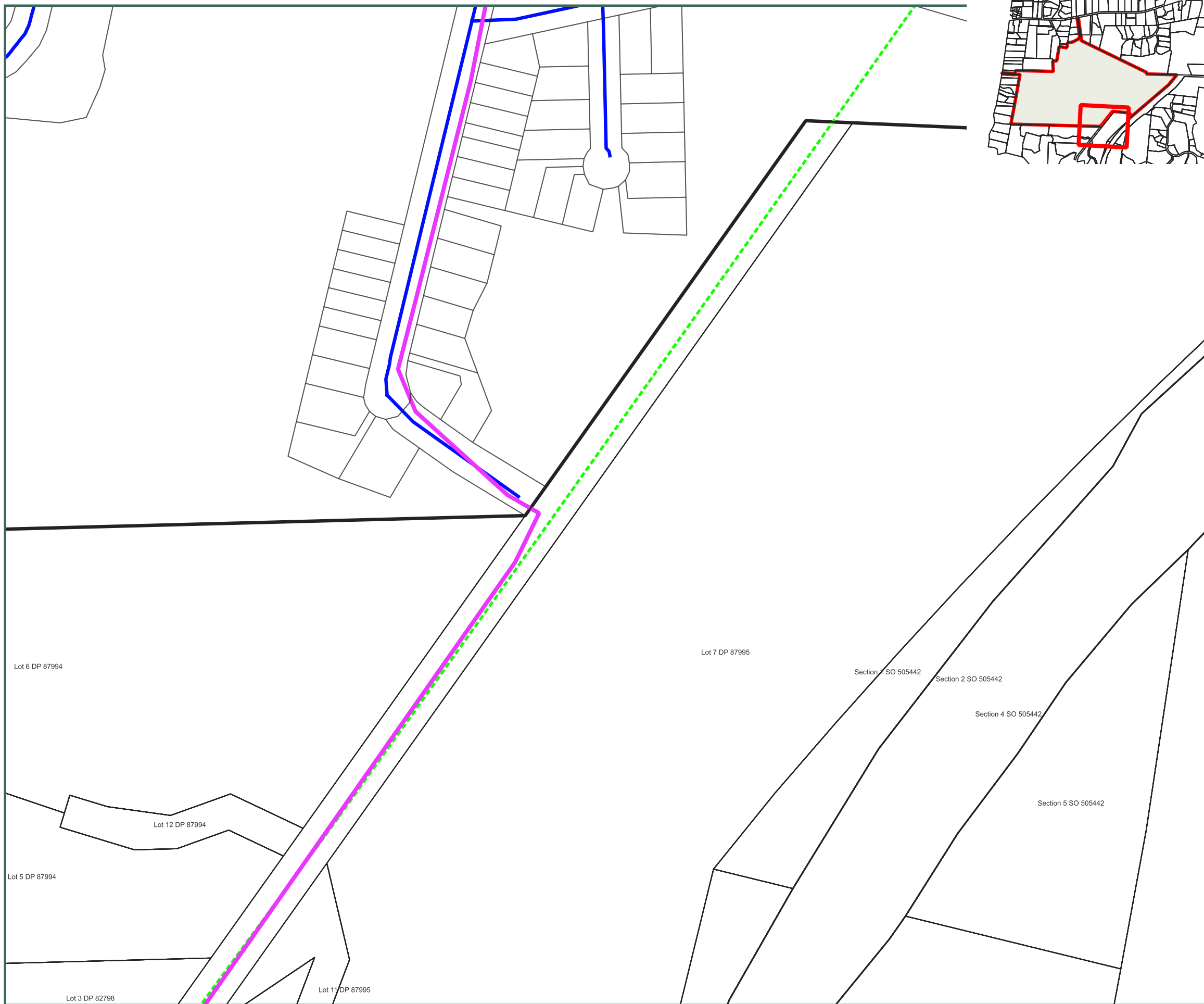
STAGE	ALL
REVISION	C
REVISION DETAILS	Issued For Consent

DESIGNED BY	JJH
DRAWN BY	JJH
APPROVED BY	PT

DATE 2026-03-13

SCALE Refer Scale Bar

**2911-ALL-WS-612**



Legend

- Bore realignment
- KCDC Bulk Potable Supply Route (Stantec ZMP 2024)
- Principal mains (HDPE)
- - - EX Bore Pipe Retained
- - - Abandoned Bore Pipe

Notes:

1. Principal water-supply mains are shown only; hydrants and service laterals are omitted.
2. Hydrant spacing is to comply with SNZ PAS 4509:2020 – Fire-fighting Water Supplies.
3. Bore realignments are indicative; final positions and clearances are to be confirmed with KCDC asset managers and affected landowners.
4. Detailed service connections are to be confirmed under detailed design in accordance with KCDC LDMR 2022 and NZS 4404.
5. Pipes and fittings are to comply with KCDC standards and approved water-supply specifications.

**Water Supply and Bore Realignment Plan**  
Sheet 13 of 13

Waikanae North Developments Ltd

Waikanae North  
Peka Peka, Kapiti Coast

© Landlink Limited 2025



1 Ngaio Road, Waikanae 5036 + contactus@Landlink.nz

STAGE	ALL
REVISION	C
REVISION DETAILS	Issued For Consent

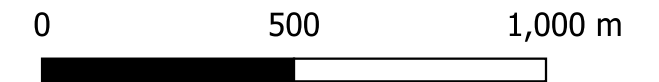
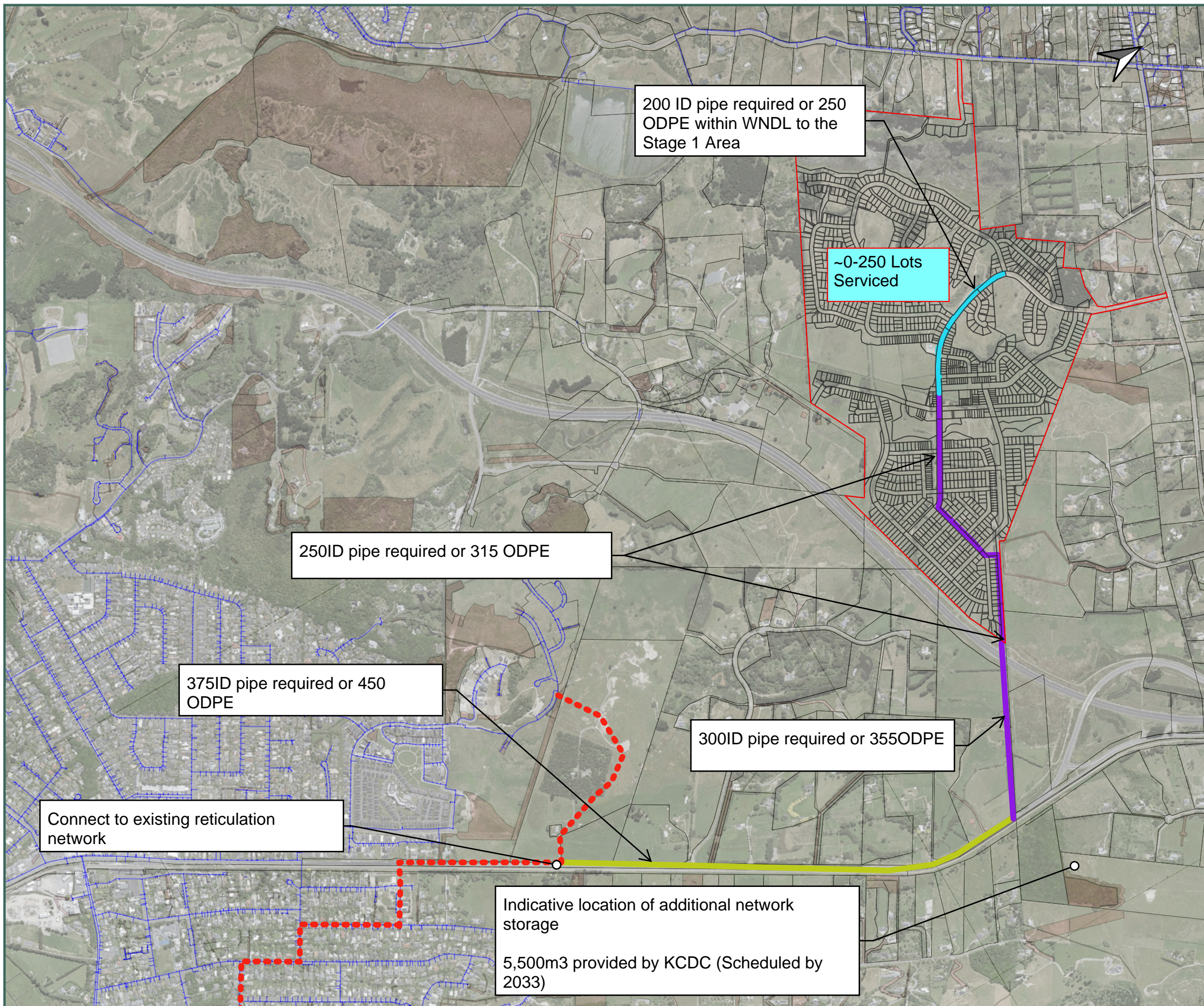
DESIGNED BY	JJH
DRAWN BY	JJH
APPROVED BY	PT

This drawing contains data from other sources and has been prepared for a specific site and event. Landlink Limited does not accept any liability for its accuracy, content or unauthorised use.

DATE 2026-03-13

SCALE Refer Scale Bar

2911-ALL-WS-613



Notes:  
 1. Network layout and bulk supply strategy are informed by the Kāpiti Coast Model Update and Zone Management Plan (ZMP) dated 16/08/2024. Final infrastructure configuration may be refined during detailed design while maintaining the intended network servicing outcomes.  
 2. Bulk supply mains shown are indicative only. Final connection points and configuration shall be confirmed during detailed design in accordance with the relevant Development Agreements.

**Water Bulk Overview**  
 Bulk Servicing Phase 1

Waikanae North Developments Ltd

Waikanae North  
 Peka Peka, Kapiti Coast

© Landlink Limited 2025



1 Ngaio Road, Waikanae 5036 + contactus@Landlink.nz

STAGE	PH1
REVISION	C
REVISION DETAILS	Issued For Consent

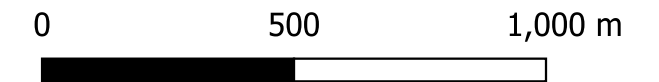
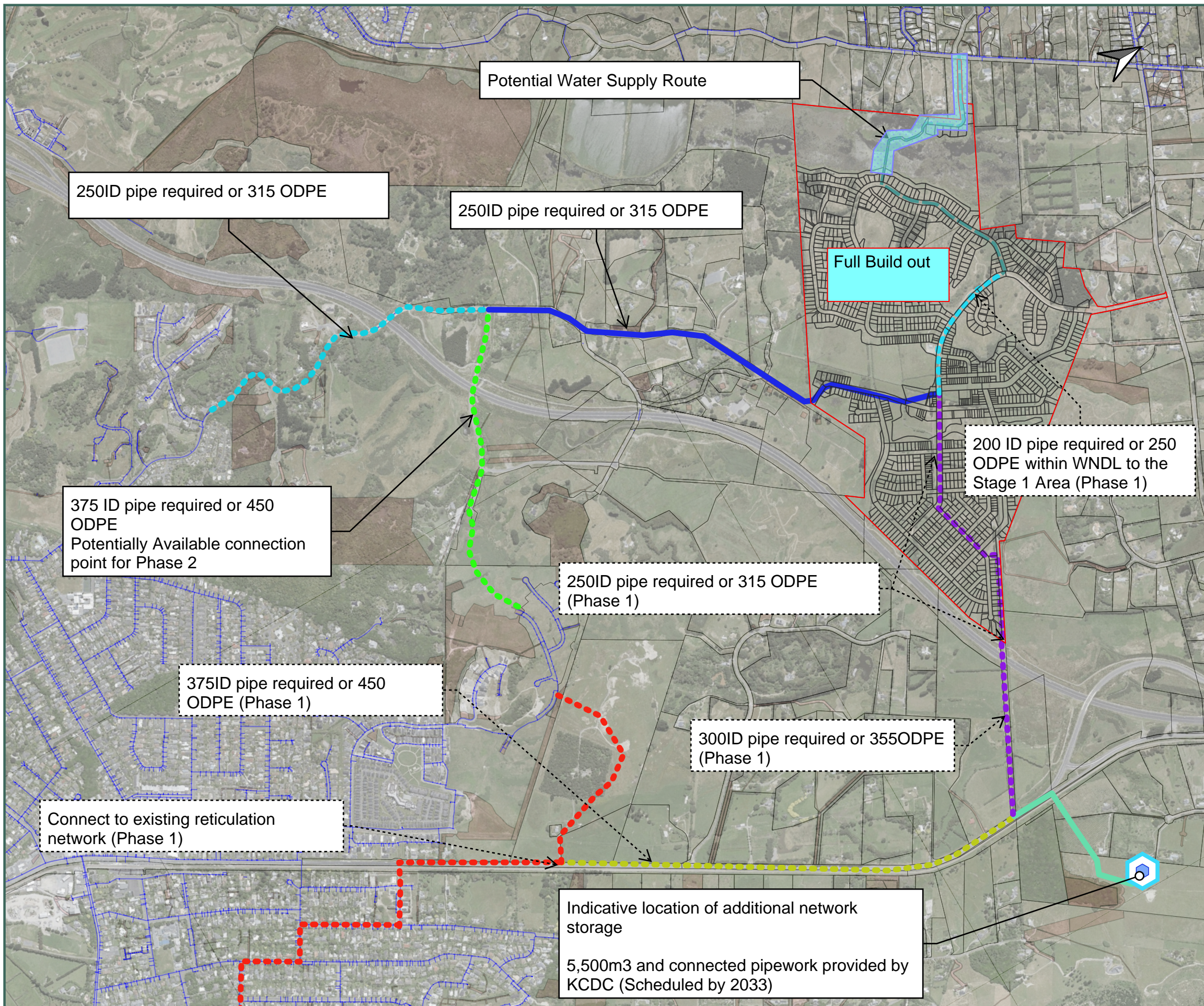
DESIGNED BY	JJH
DRAWN BY	JJH
APPROVED BY	PT

This drawing contains data from other sources and has been prepared for a specific site and event. Landlink Limited does not accept any liability for its accuracy, content or unauthorised use.

DATE 2026-03-13

SCALE Refer Scale Bar

**2911-PH1-WS-650**



Notes:

1. Network layout and bulk supply strategy are informed by the Kāpiti Coast Model Update and Zone Management Plan (ZMP) dated 16/08/2024. Final infrastructure configuration may be refined during detailed design while maintaining the intended network servicing outcomes.
2. Bulk supply mains shown are indicative only. Final connection points and configuration shall be confirmed during detailed design in accordance with the relevant Development Agreements.

**Water Bulk Overview**  
Bulk Servicing Phase 2

Waikanae North Developments Ltd

Waikanae North  
Peka Peka, Kapiti Coast

© Landlink Limited 2025



1 Ngaio Road, Waikanae 5036 + contactus@Landlink.nz

STAGE	PH2
REVISION	C
REVISION DETAILS	Issued For Consent

DESIGNED BY	JJH
DRAWN BY	JJH
APPROVED BY	PT

DATE 2026-03-13

SCALE Refer Scale Bar

**2911-PH2-WS-651**

This drawing contains data from other sources and has been prepared for a specific site and event. Landlink Limited does not accept any liability for its accuracy, content or unauthorised use.