

Appendix 2: Modelled reef fish abundance and distribution

The following 37 figures for individual species are arranged by increasing order of maximum abundance in the Taranaki region. Data are estimated abundance in 1 km² grid squares. Note that on the scale provided 0 = absent, 1 = single (1 individual seen per 1 hr dive), 2 = few (2 – 10), 3 = many (11 – 100) and 4 = abundant (> 100). Model output provided courtesy of the Department of Conservation (DOC) which owns the original fish survey data and funded the original modelling undertaken by Smith (2008).

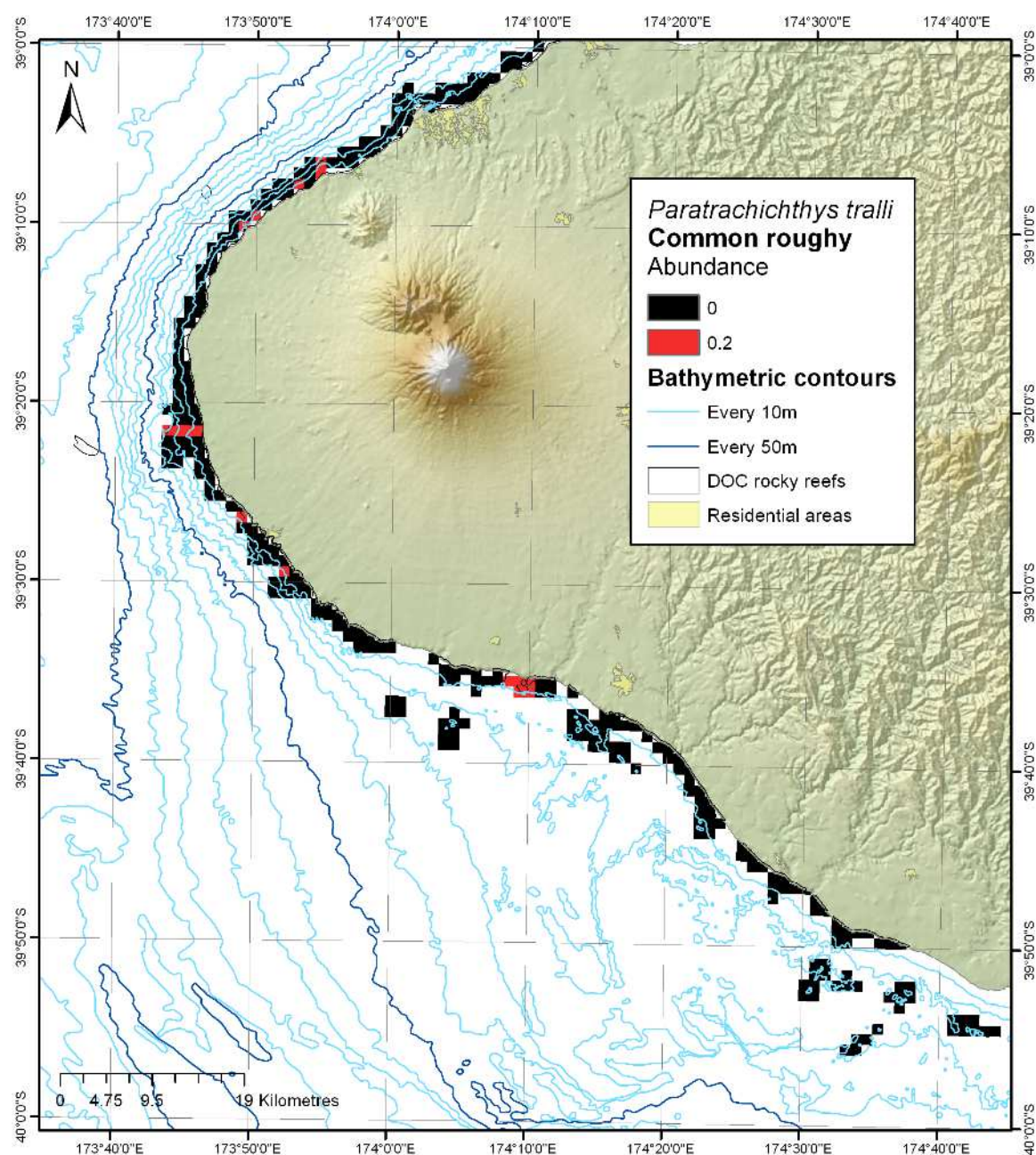


Figure A2.1: Modelled distribution and abundance of common roughy on Taranaki subtidal reefs.

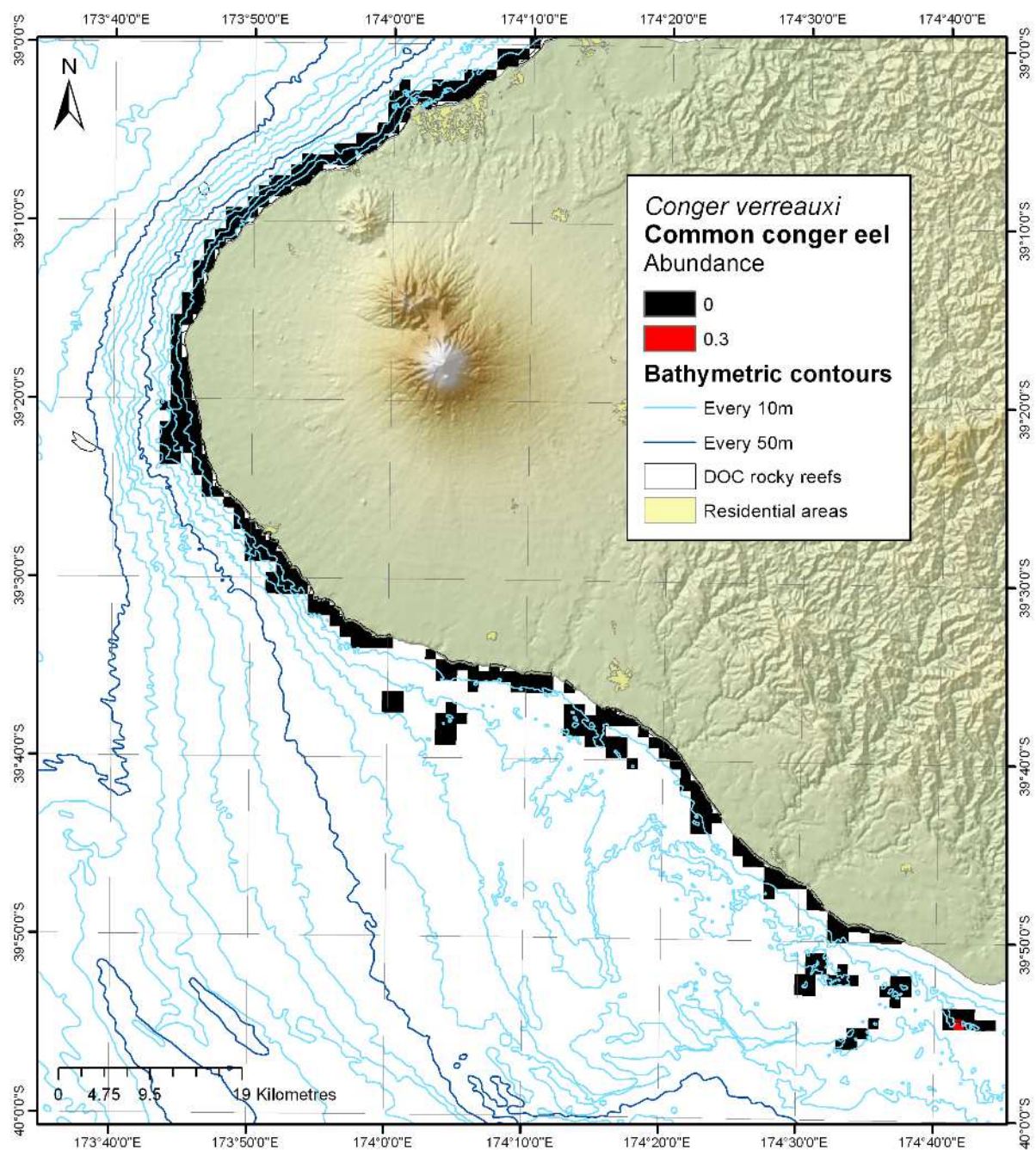


Figure A2.2: Modelled distribution and abundance of conger eel on Taranaki subtidal reefs.

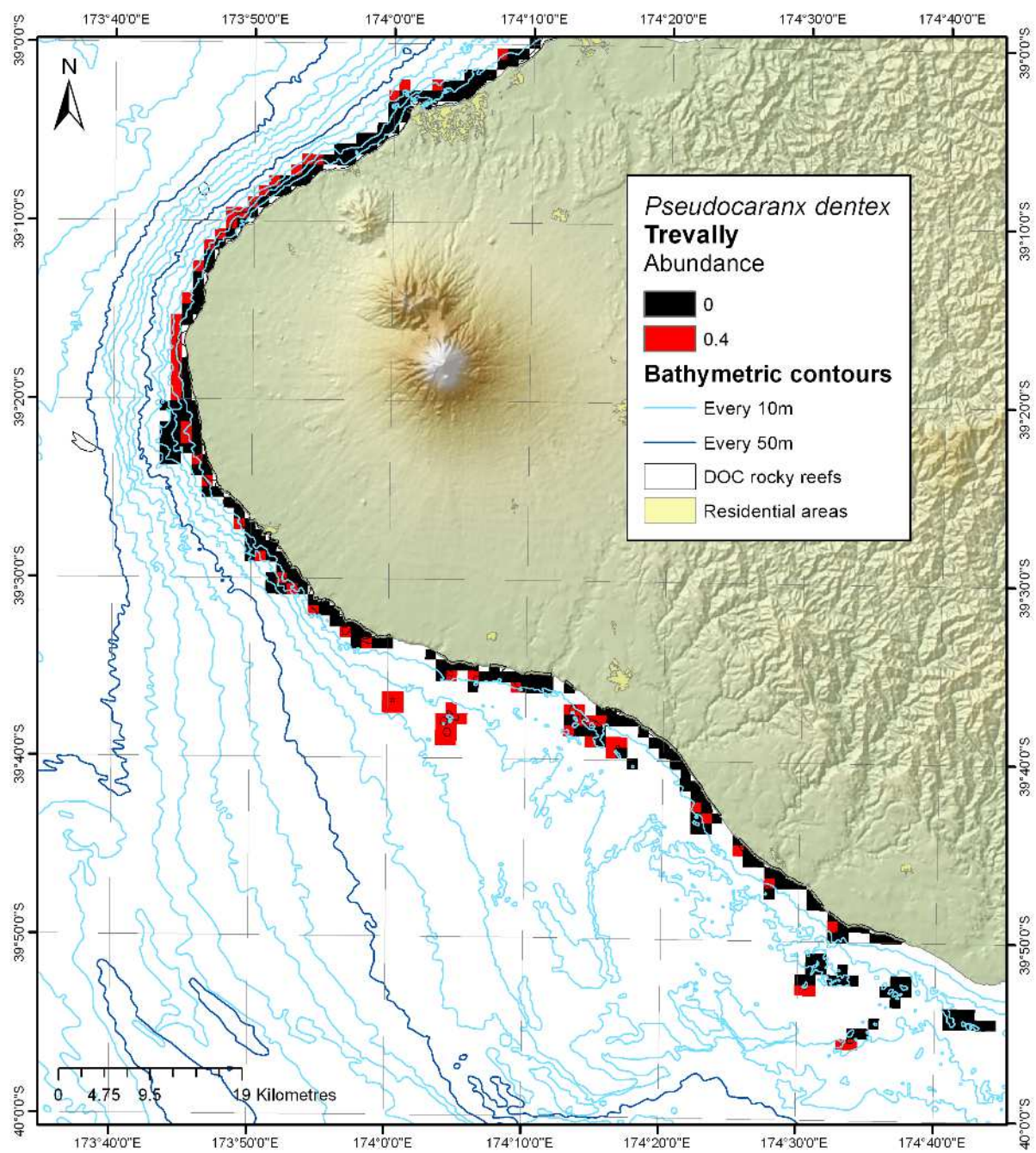


Figure A2.3: Modelled distribution and abundance of trevally on Taranaki subtidal reefs.

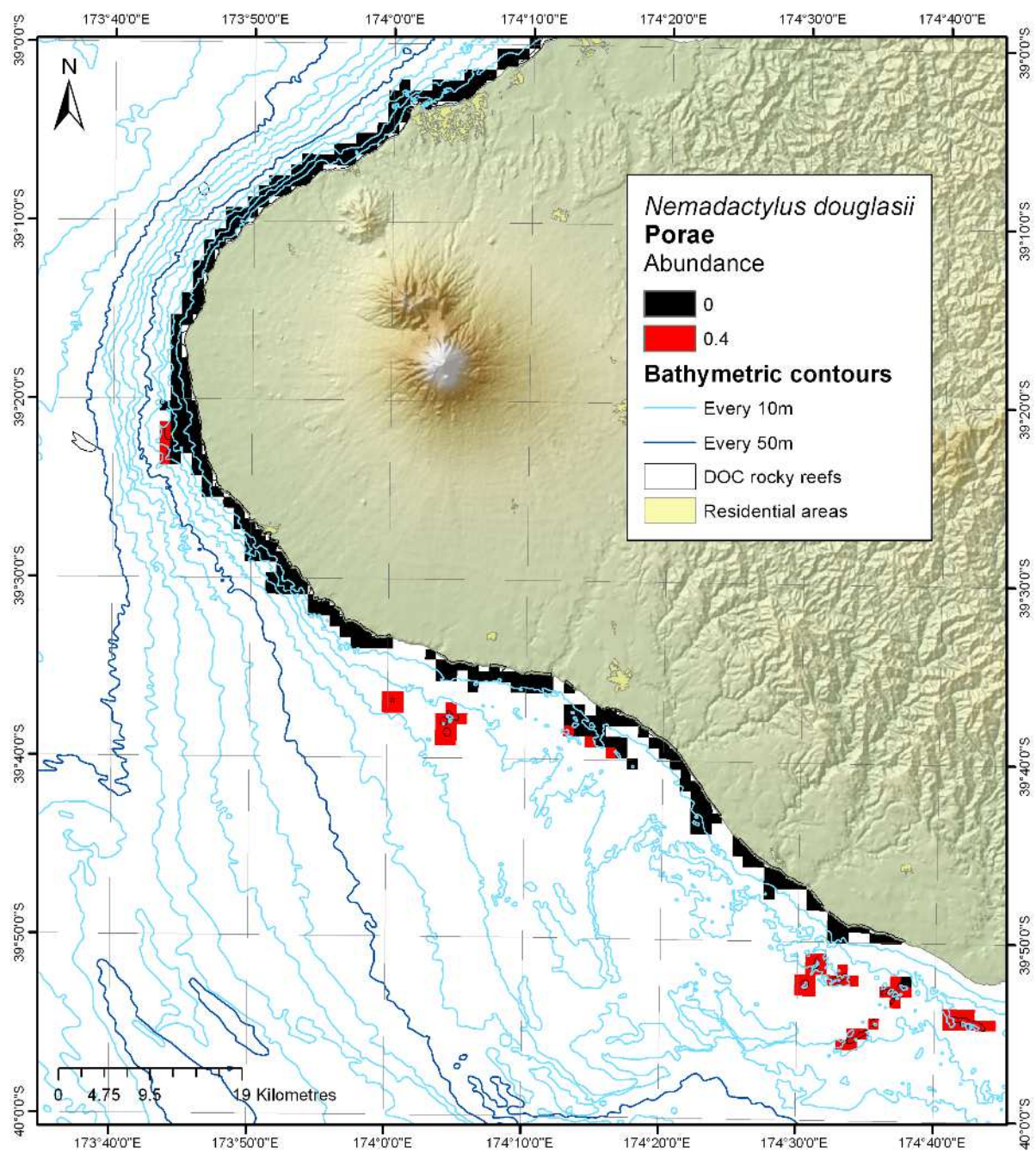


Figure A2.4: Modelled distribution and abundance of porae on Taranaki subtidal reefs.

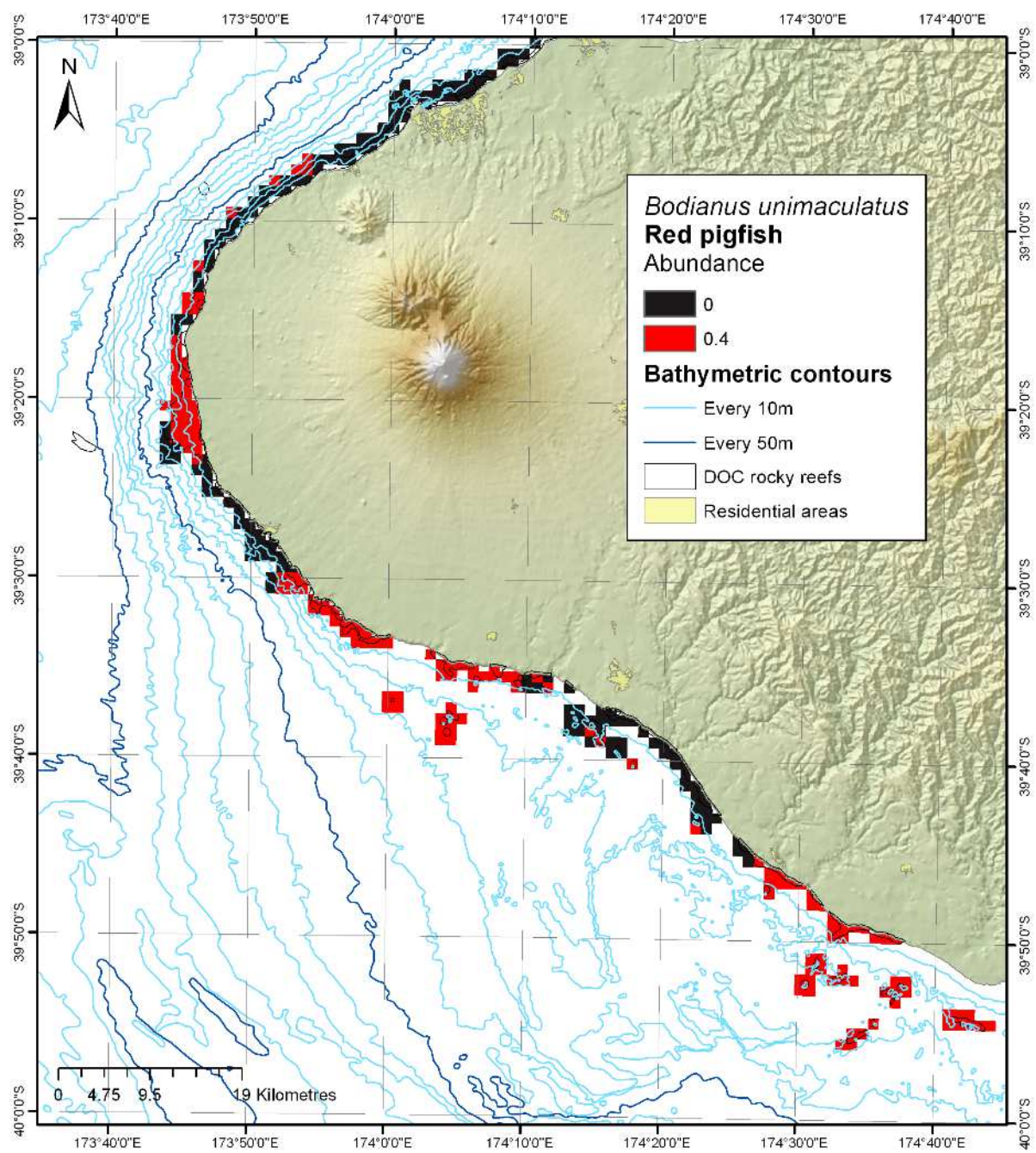


Figure A2.5: Modelled distribution and abundance of red pigfish on Taranaki subtidal reefs.

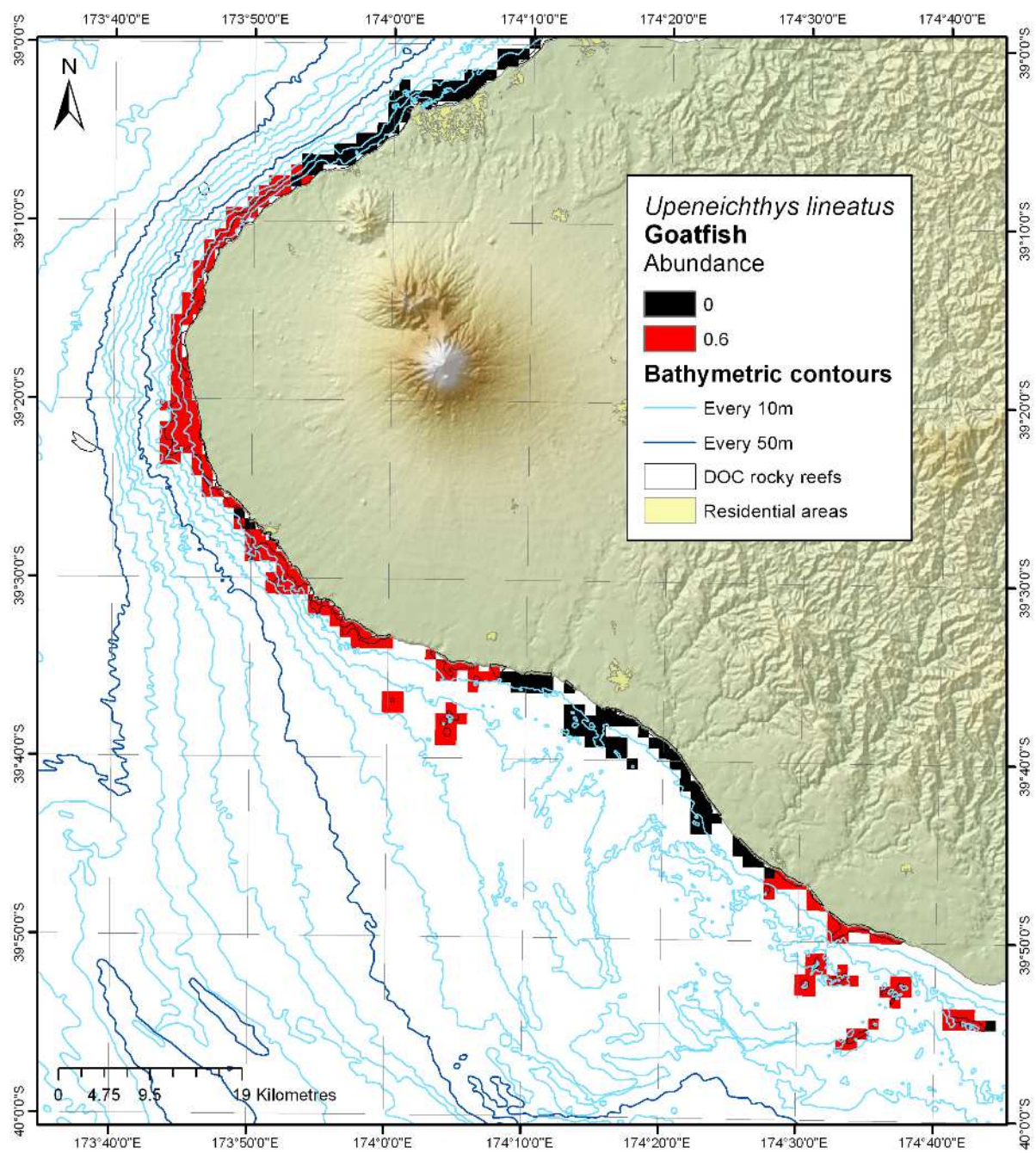


Figure A2.6: Modelled distribution and abundance of goatfish on Taranaki subtidal reefs.

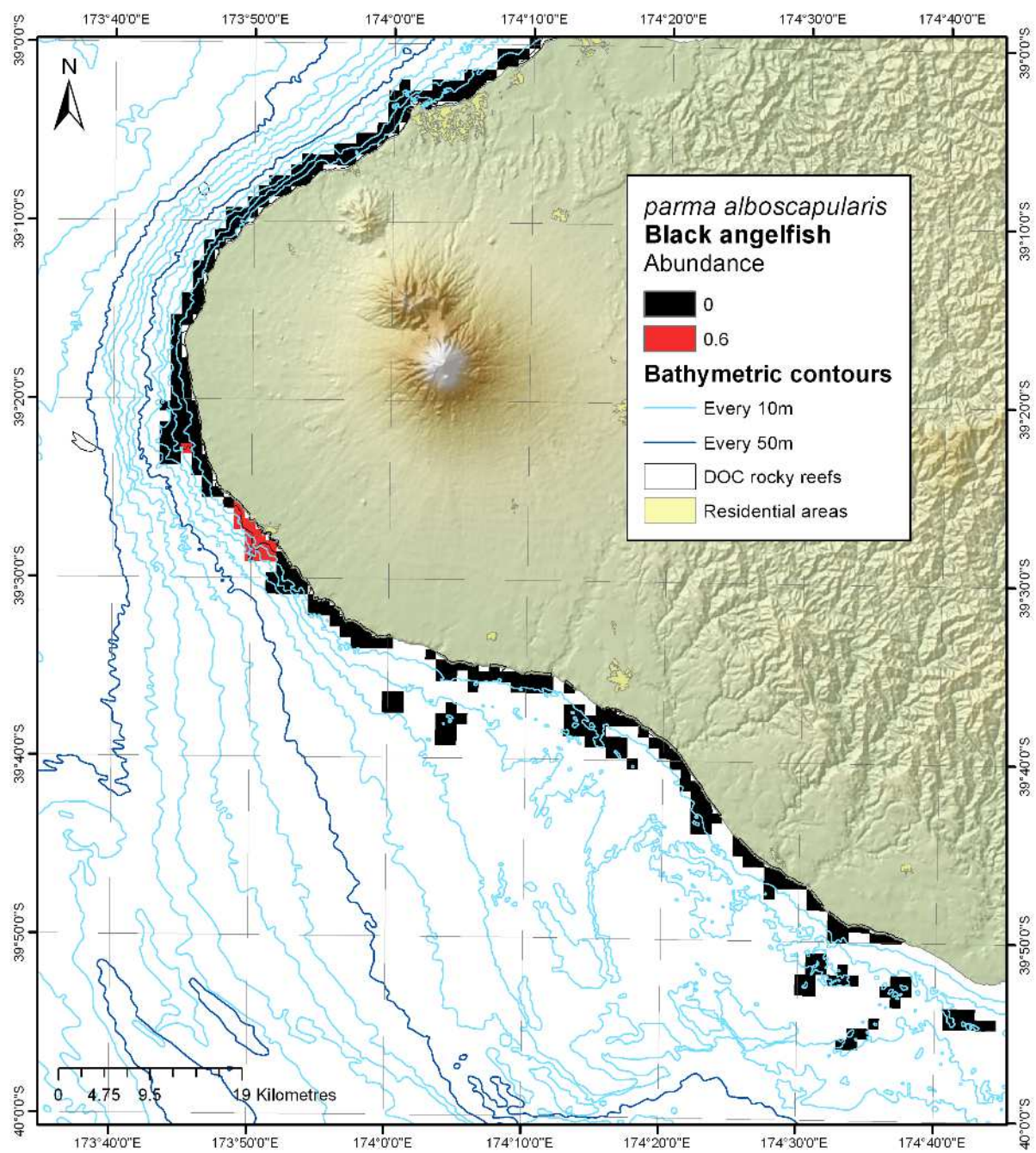


Figure A2.7: Modelled distribution and abundance of black angelfish on Taranaki subtidal reefs.

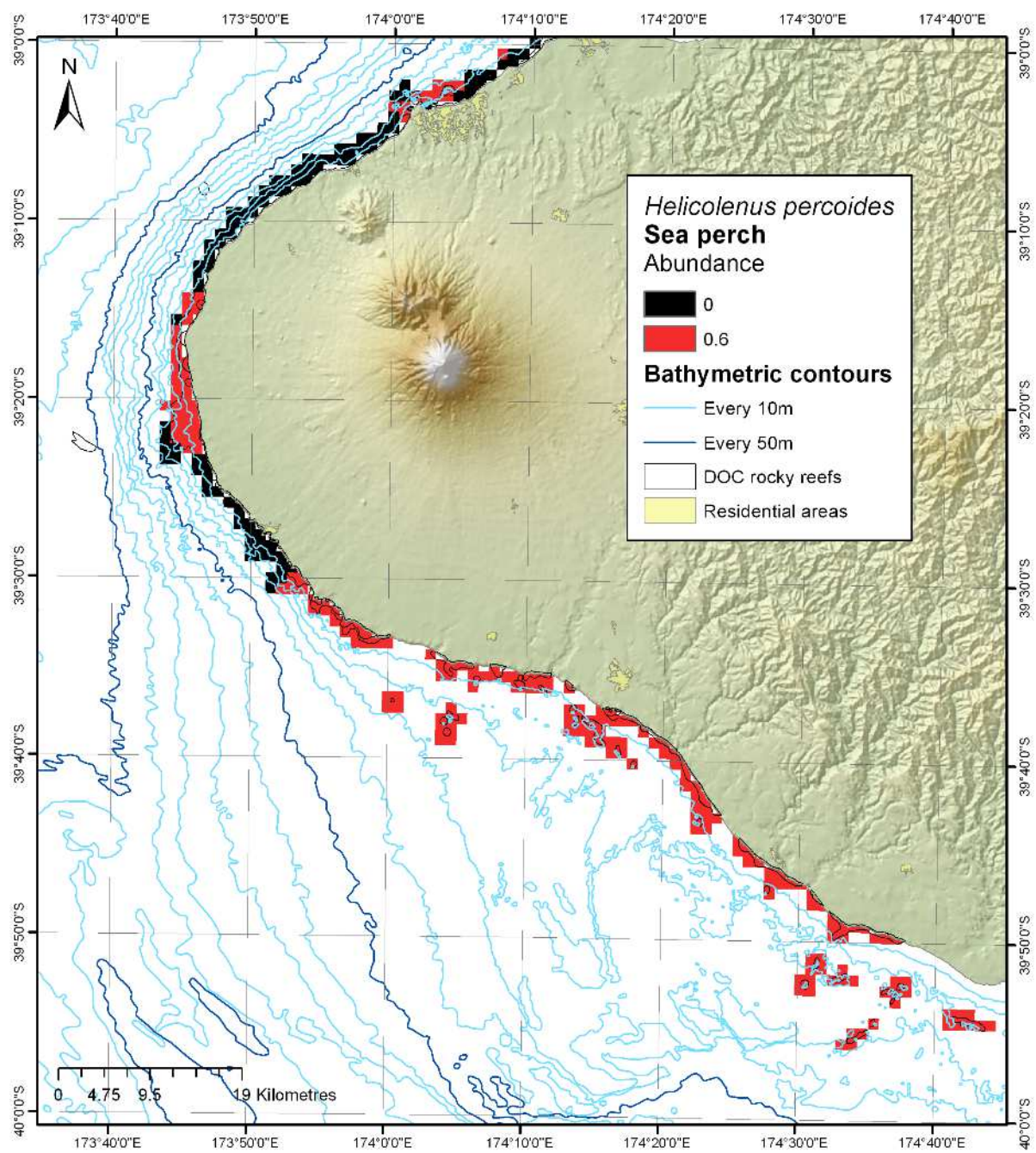


Figure A2.8: Modelled distribution and abundance of sea perch on Taranaki subtidal reefs.

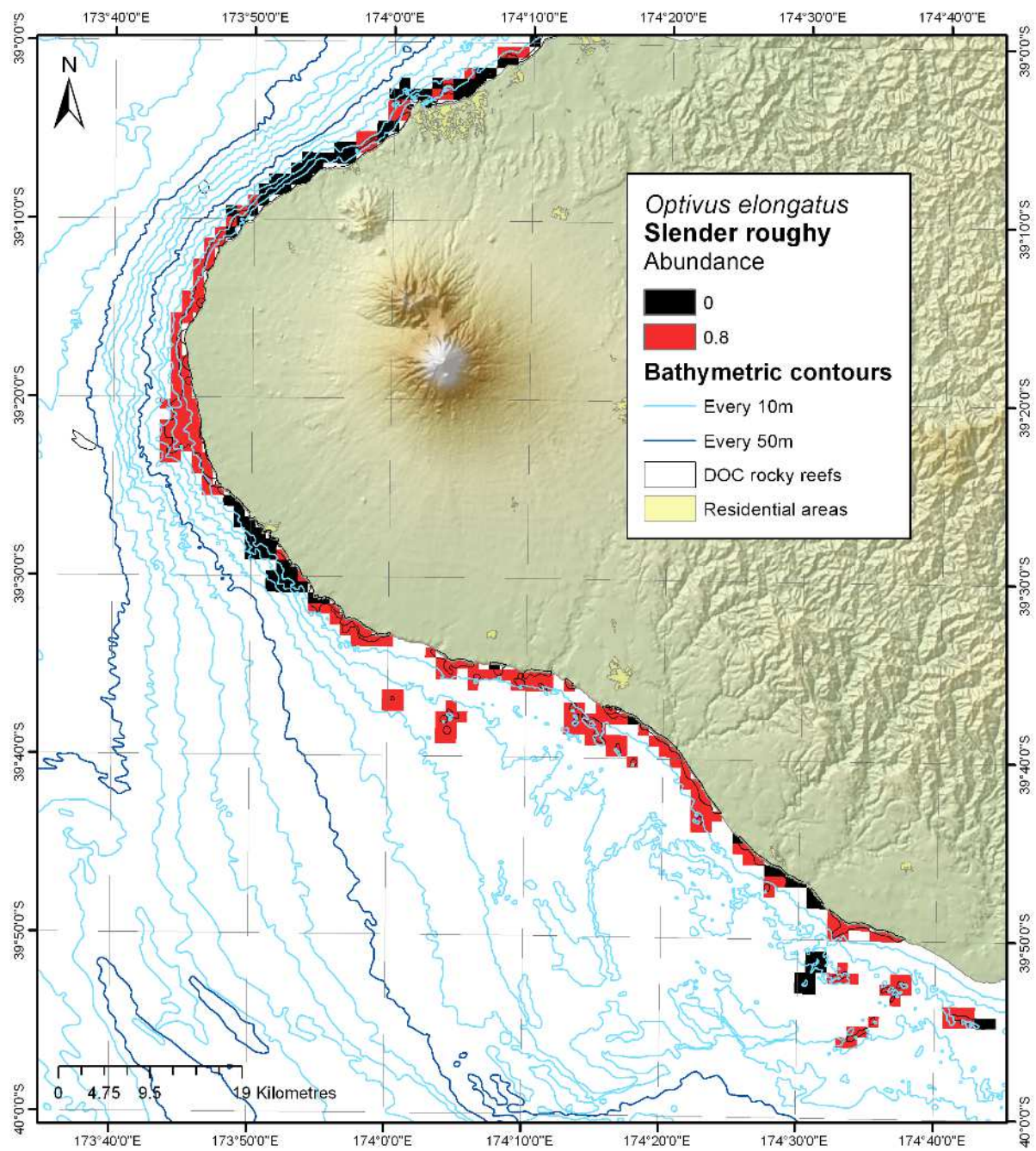


Figure 10 Error! Use the Home tab to apply Heading 1 to the text that you want to appear here.-9:
Modelled distribution and abundance of slender roughy on Taranaki subtidal reefs.

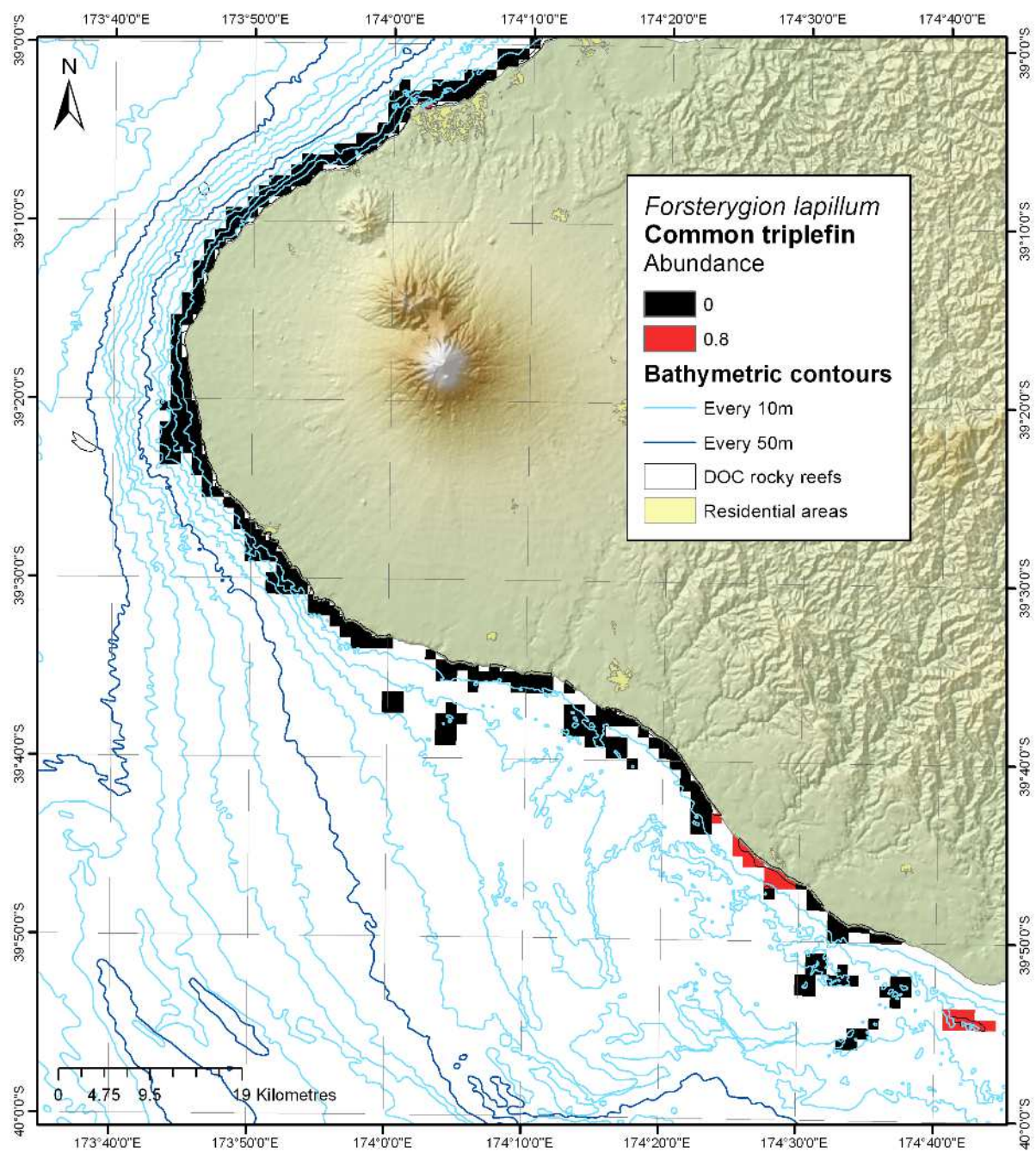


Figure A2.10: Modelled distribution and abundance of common triplefin on Taranaki subtidal reefs.

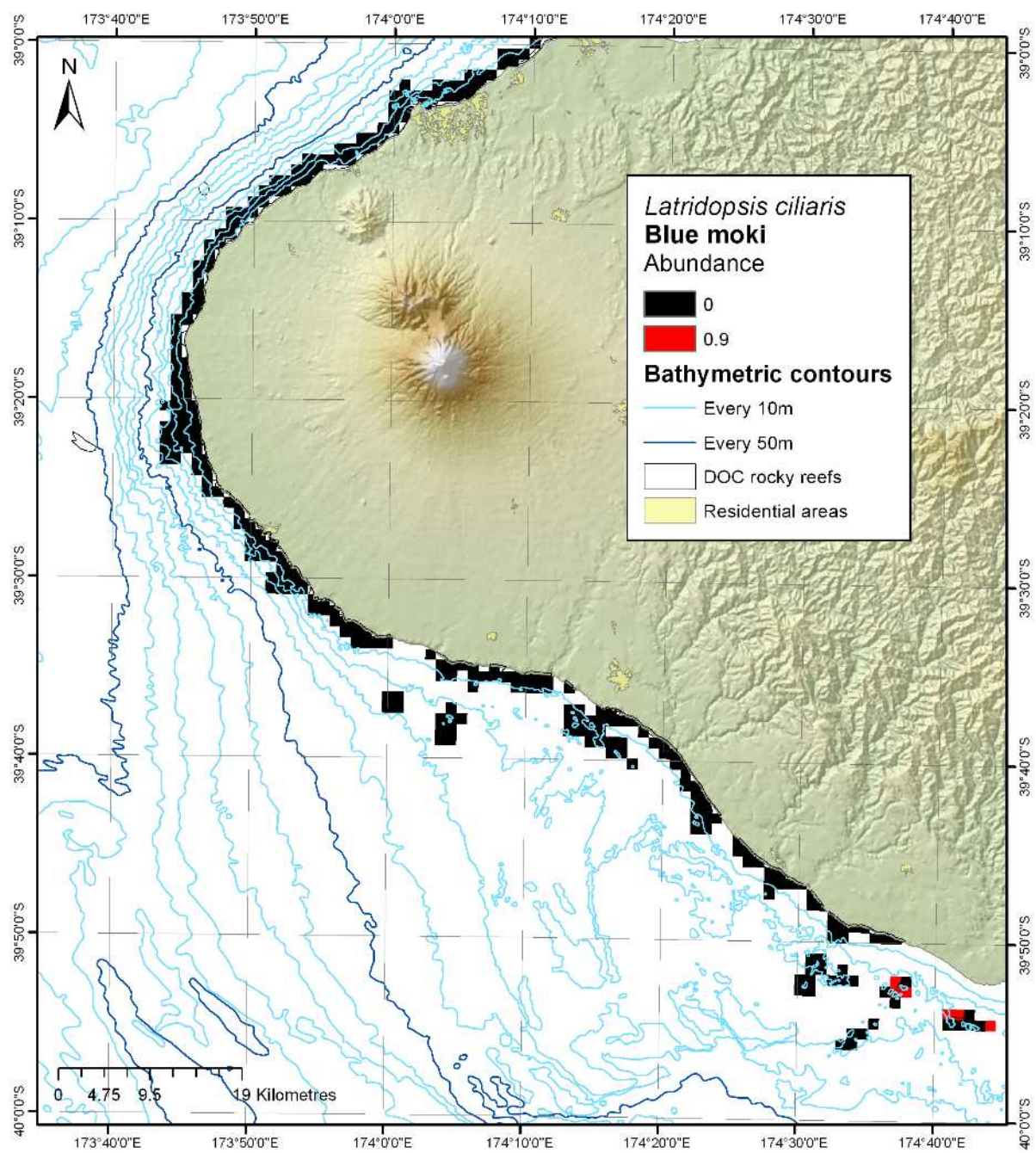


Figure A2.11: Modelled distribution and abundance of blue moki on Taranaki subtidal reefs.

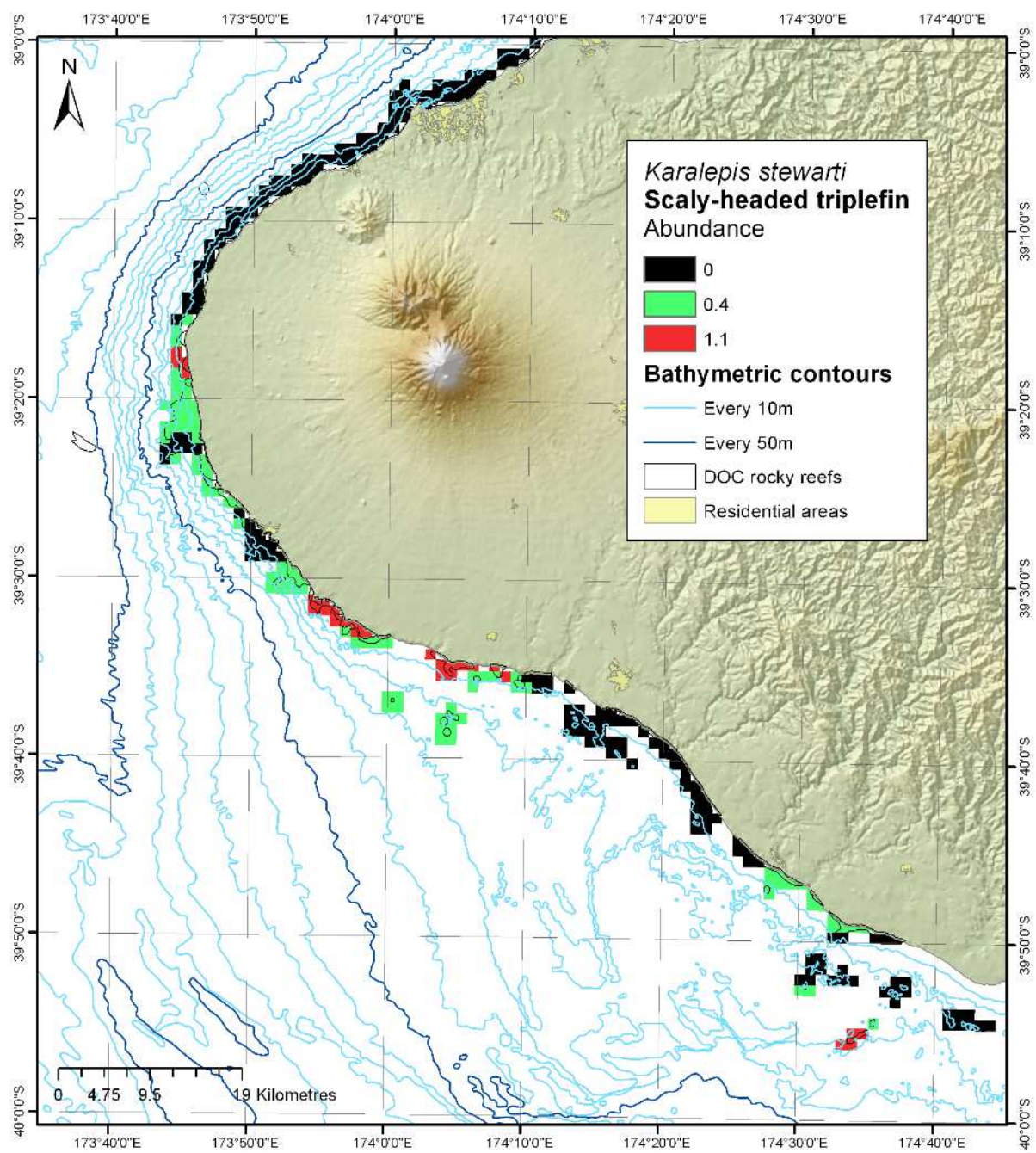


Figure A2.12: Modelled distribution and abundance of scaly-headed triplefin on Taranaki subtidal reefs.

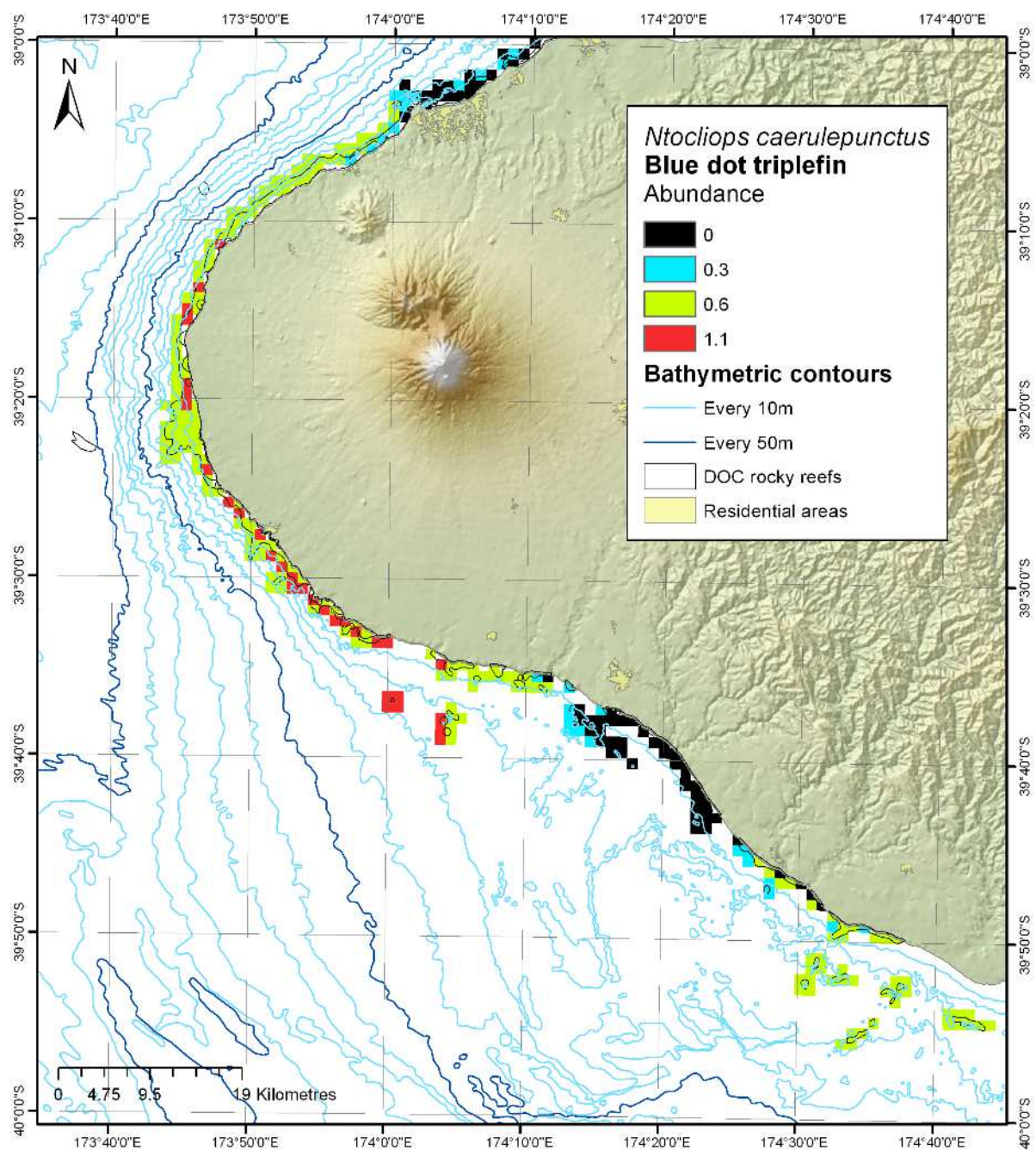


Figure A2.13: Modelled distribution and abundance of blue dot triplefin on Taranaki subtidal reefs.

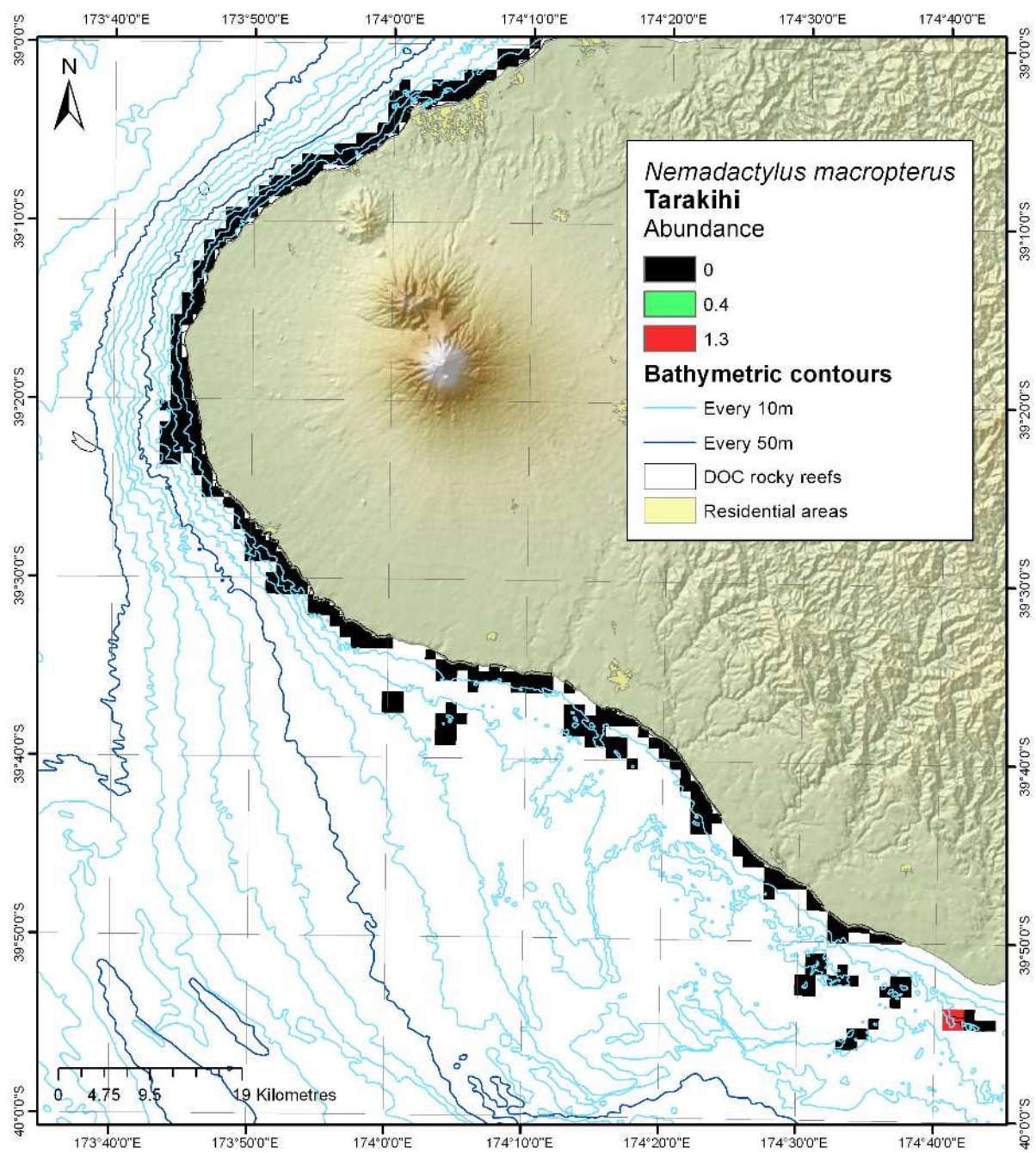


Figure A2.14: Modelled distribution and abundance of tarakihi on Taranaki subtidal reefs.

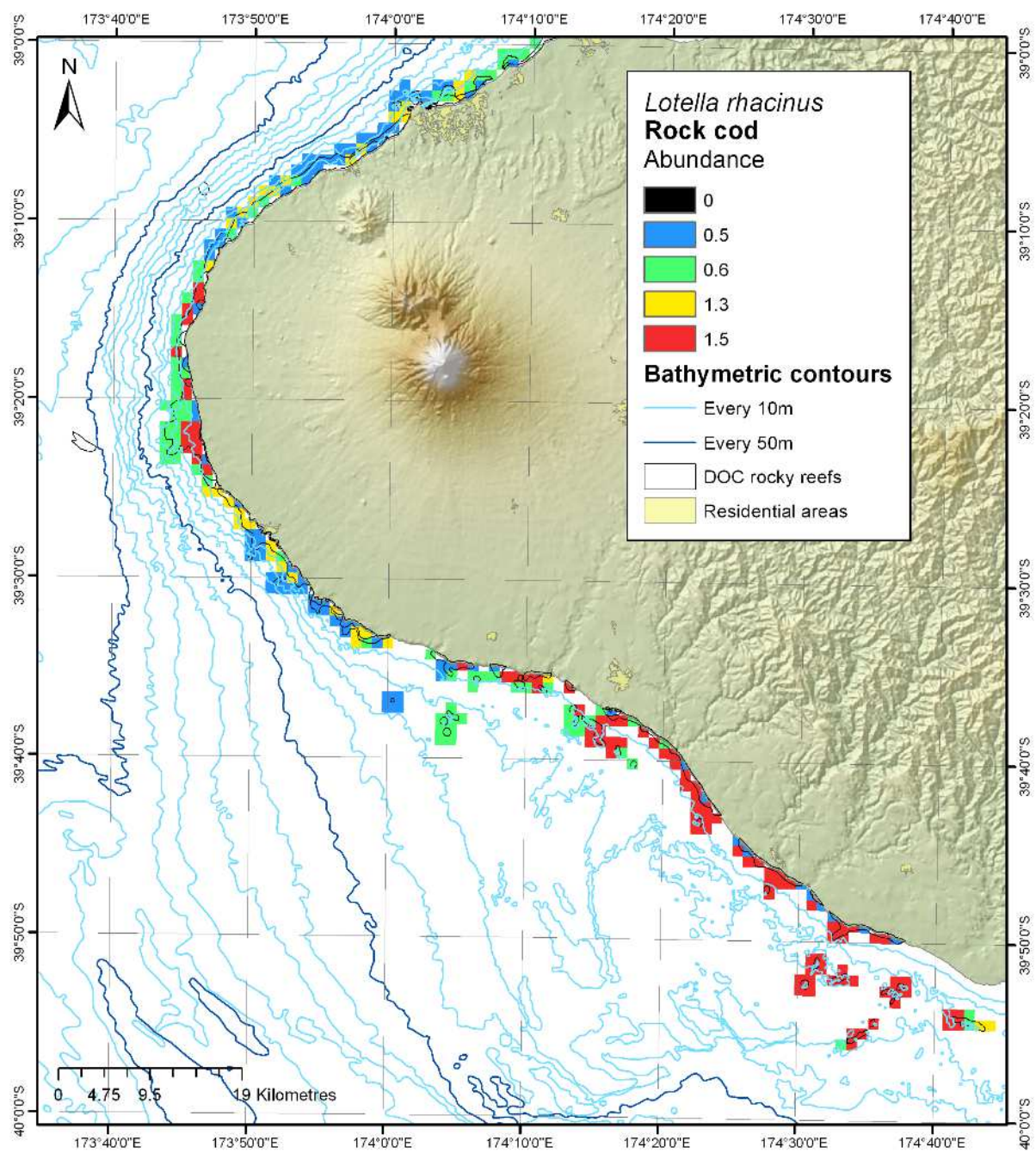


Figure A2.15: Modelled distribution and abundance of rock cod on Taranaki subtidal reefs.

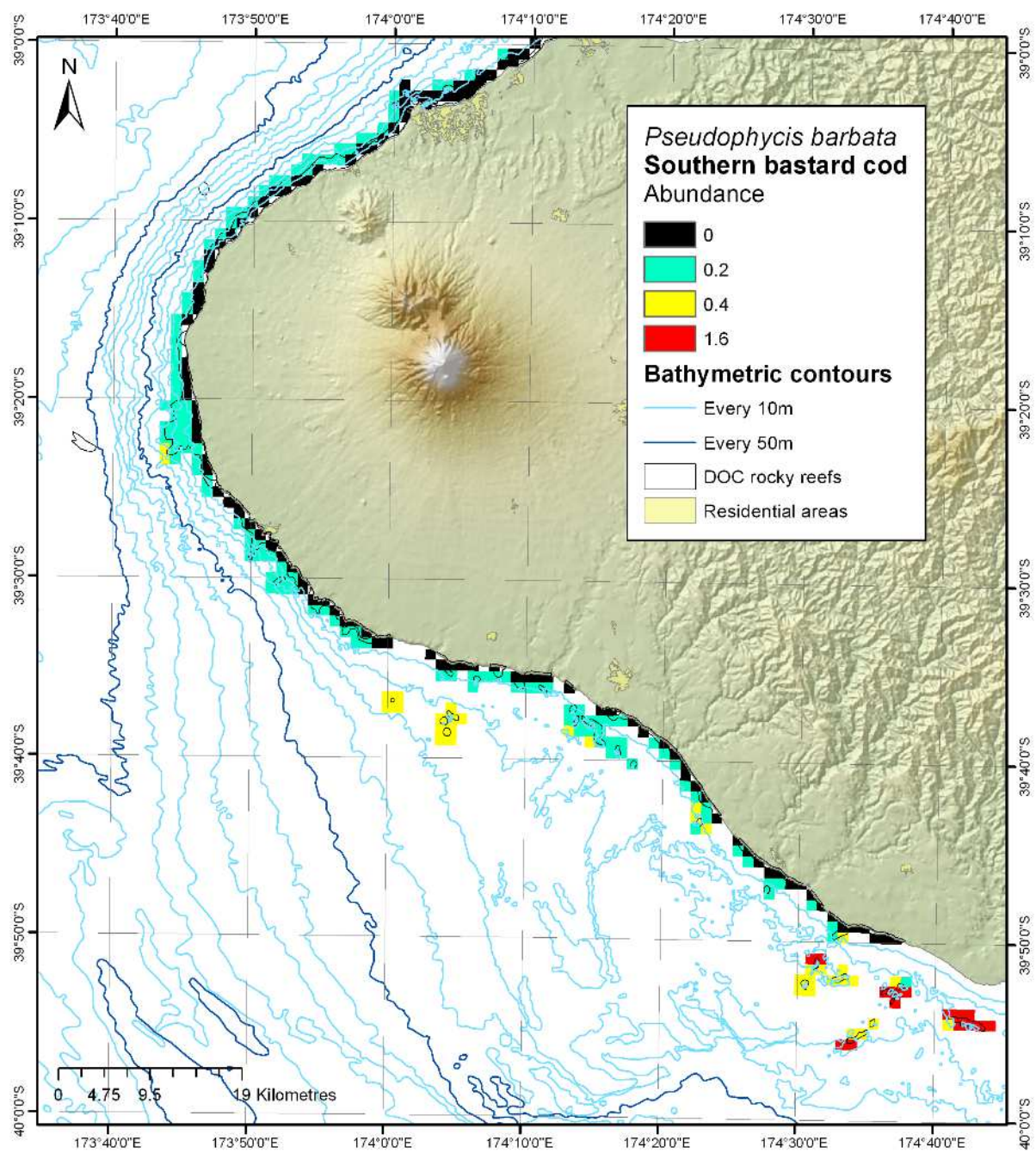


Figure A2.16: Modelled distribution and abundance of southern bastard cod on Taranaki subtidal reefs.

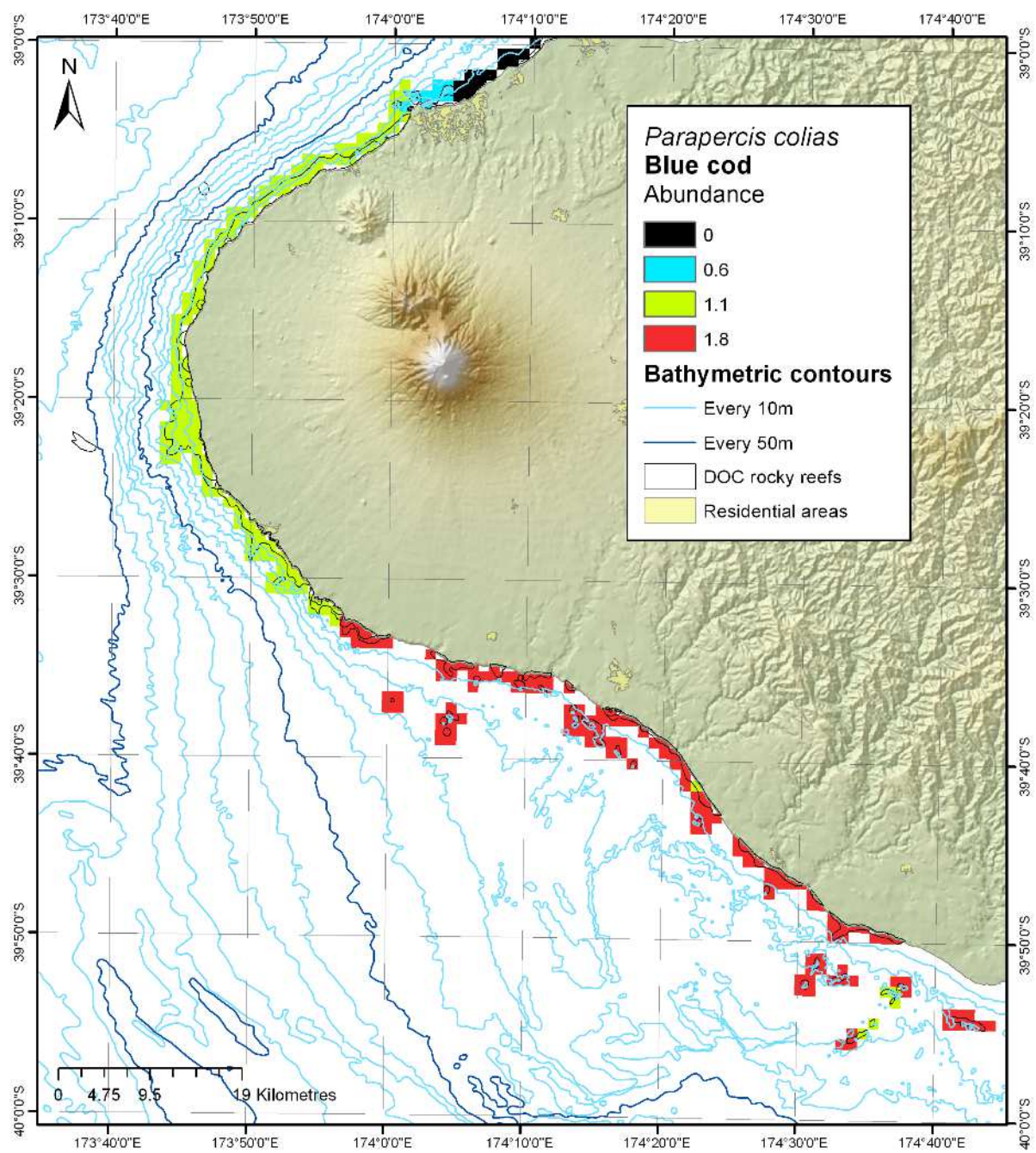


Figure A2.17: Modelled distribution and abundance of blue cod on Taranaki subtidal reefs.

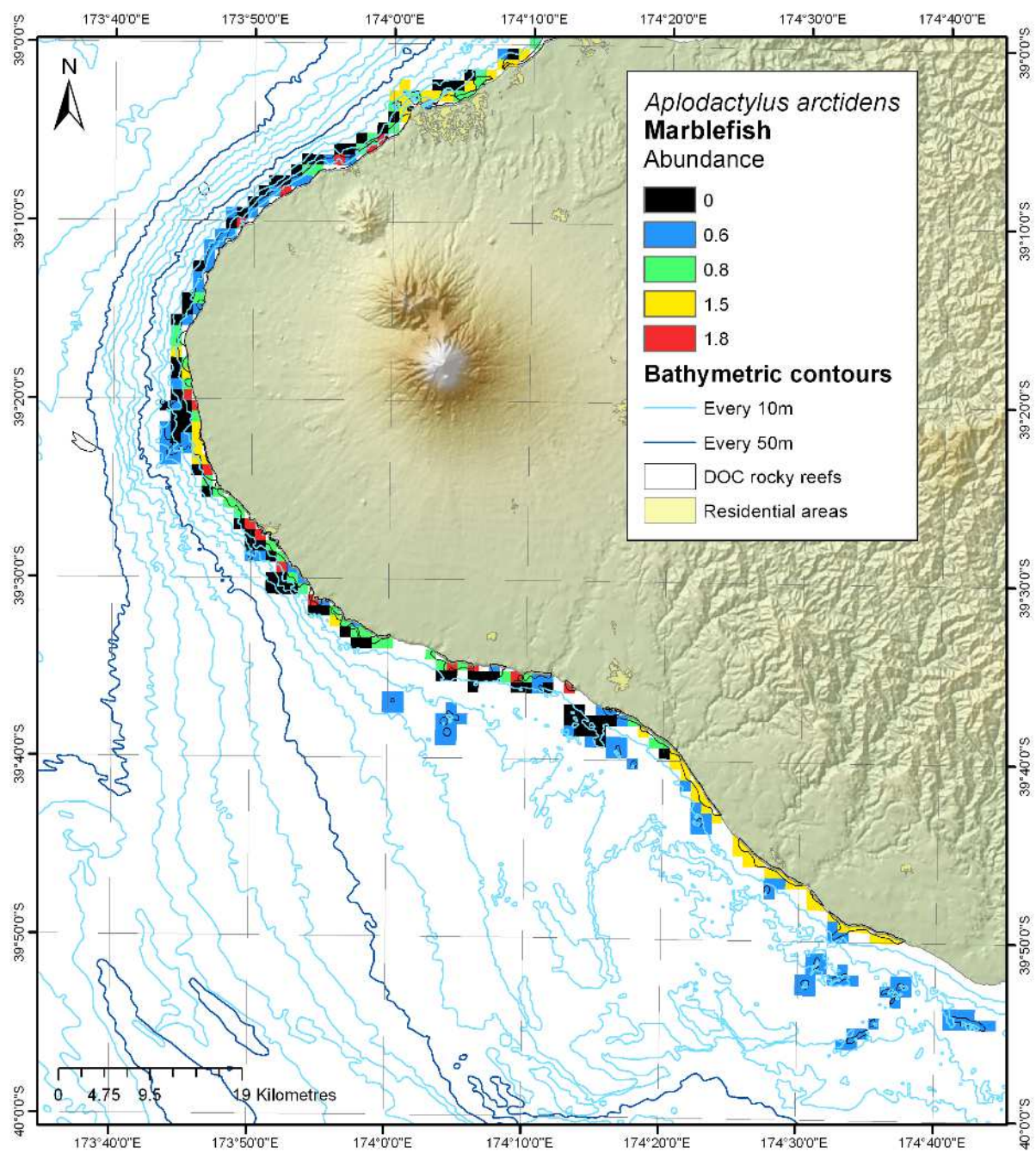


Figure A2.18: Modelled distribution and abundance of marbled wrasse on Taranaki subtidal reefs.

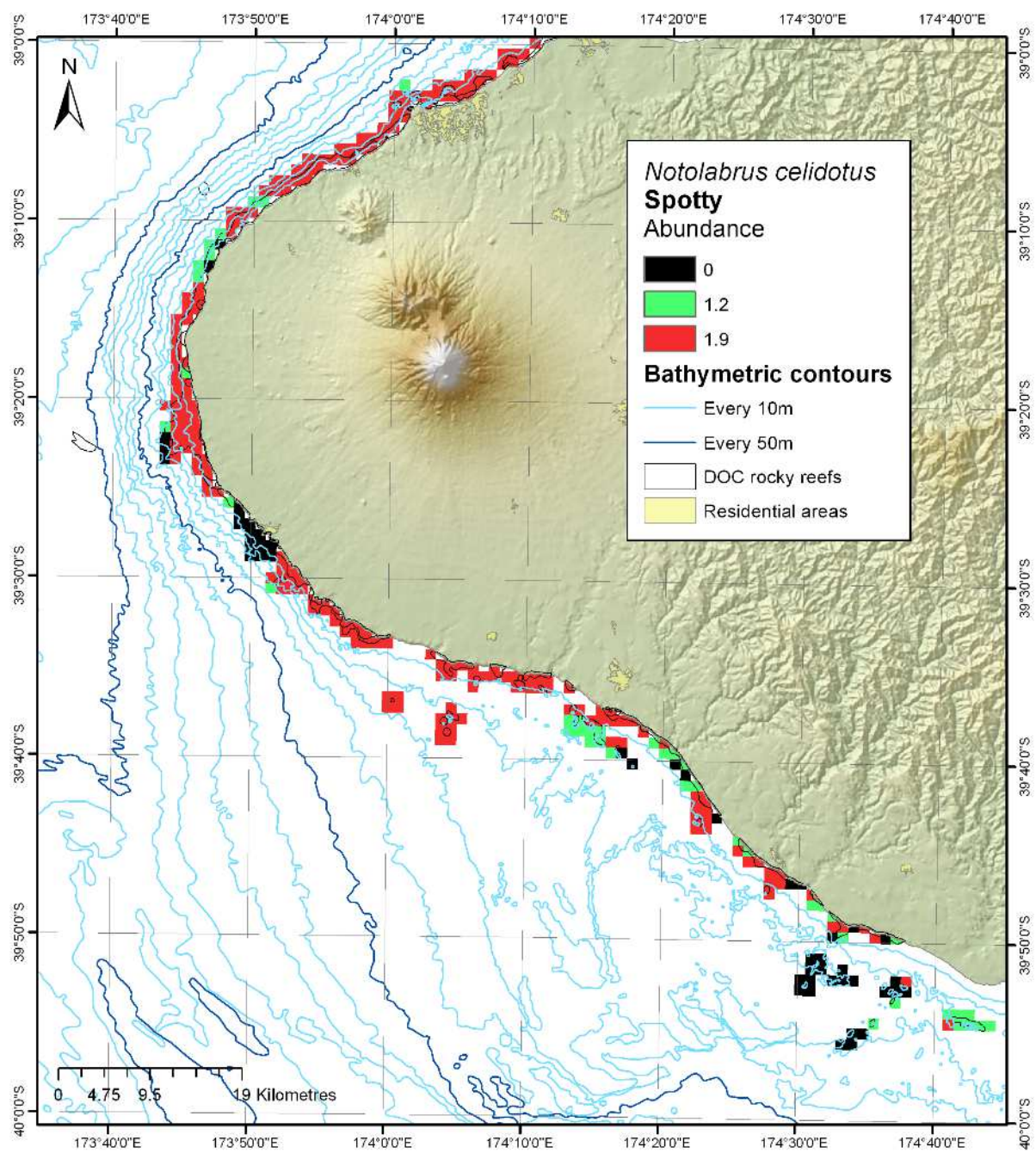


Figure A2.19: Modelled distribution and abundance of spotty on Taranaki subtidal reefs.

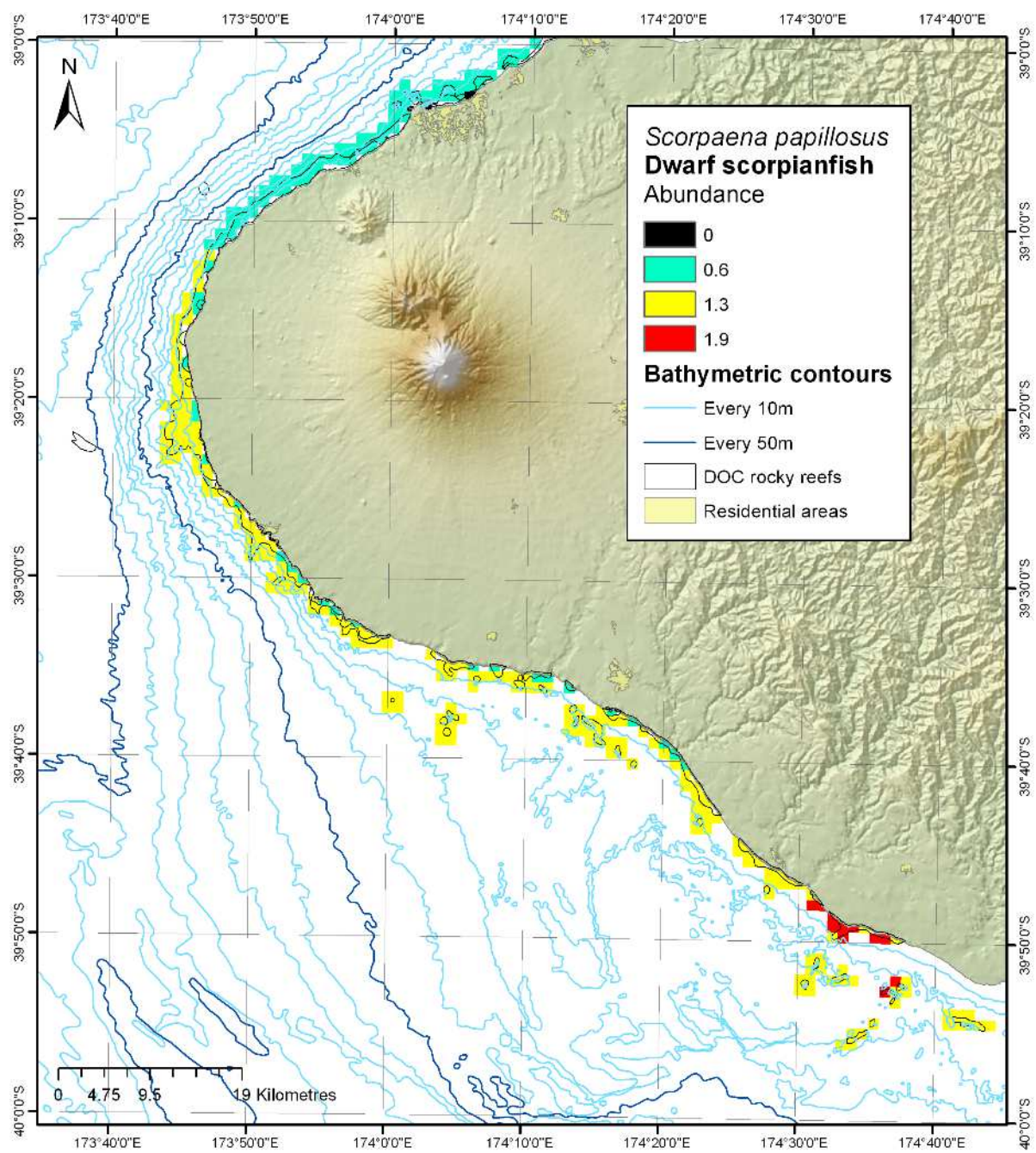


Figure A2.20: Modelled distribution and abundance of dwarf scorpionfish on Taranaki subtidal reefs.

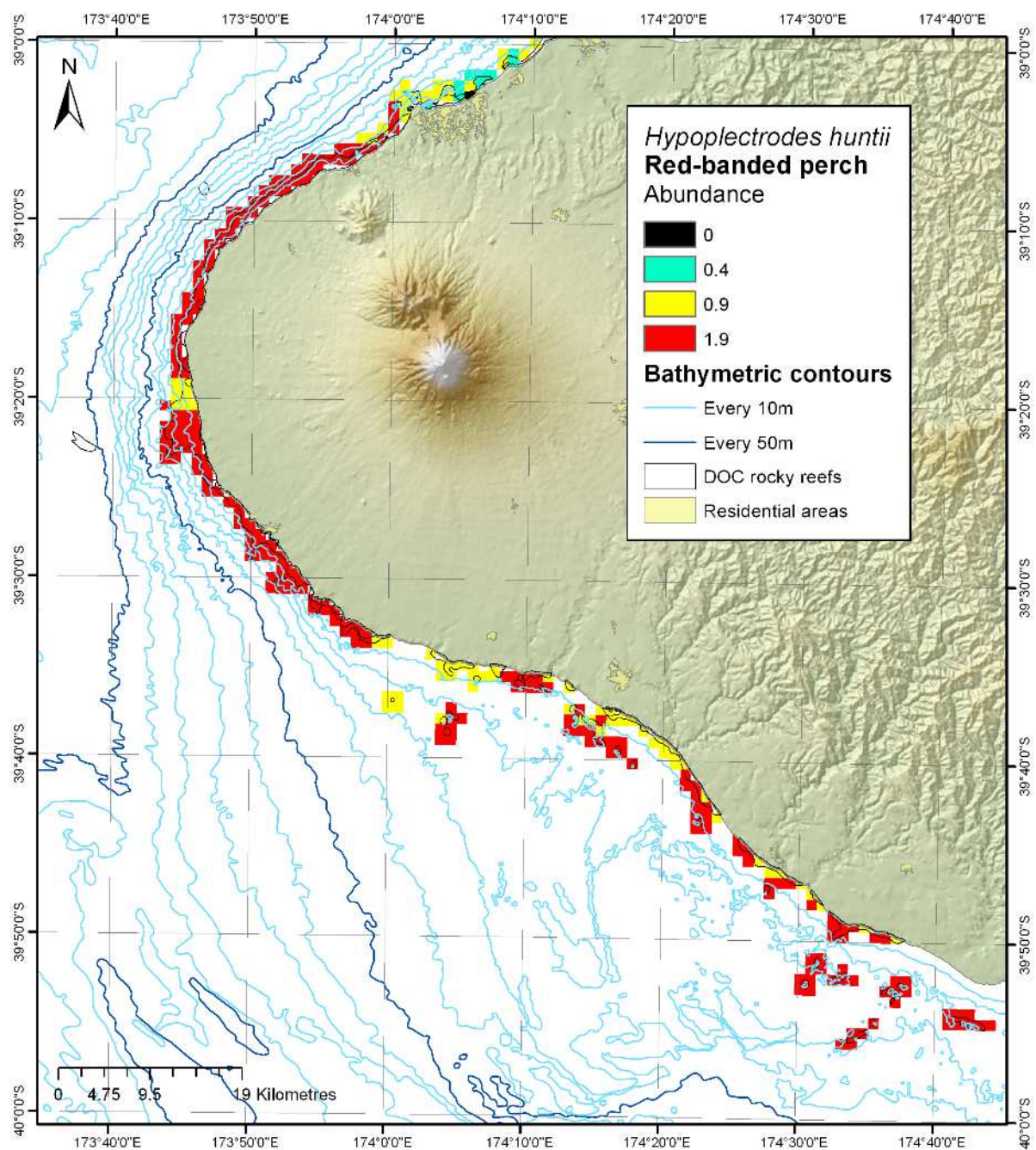


Figure A2.21: Modelled distribution and abundance of red-banded perch on Taranaki subtidal reefs.

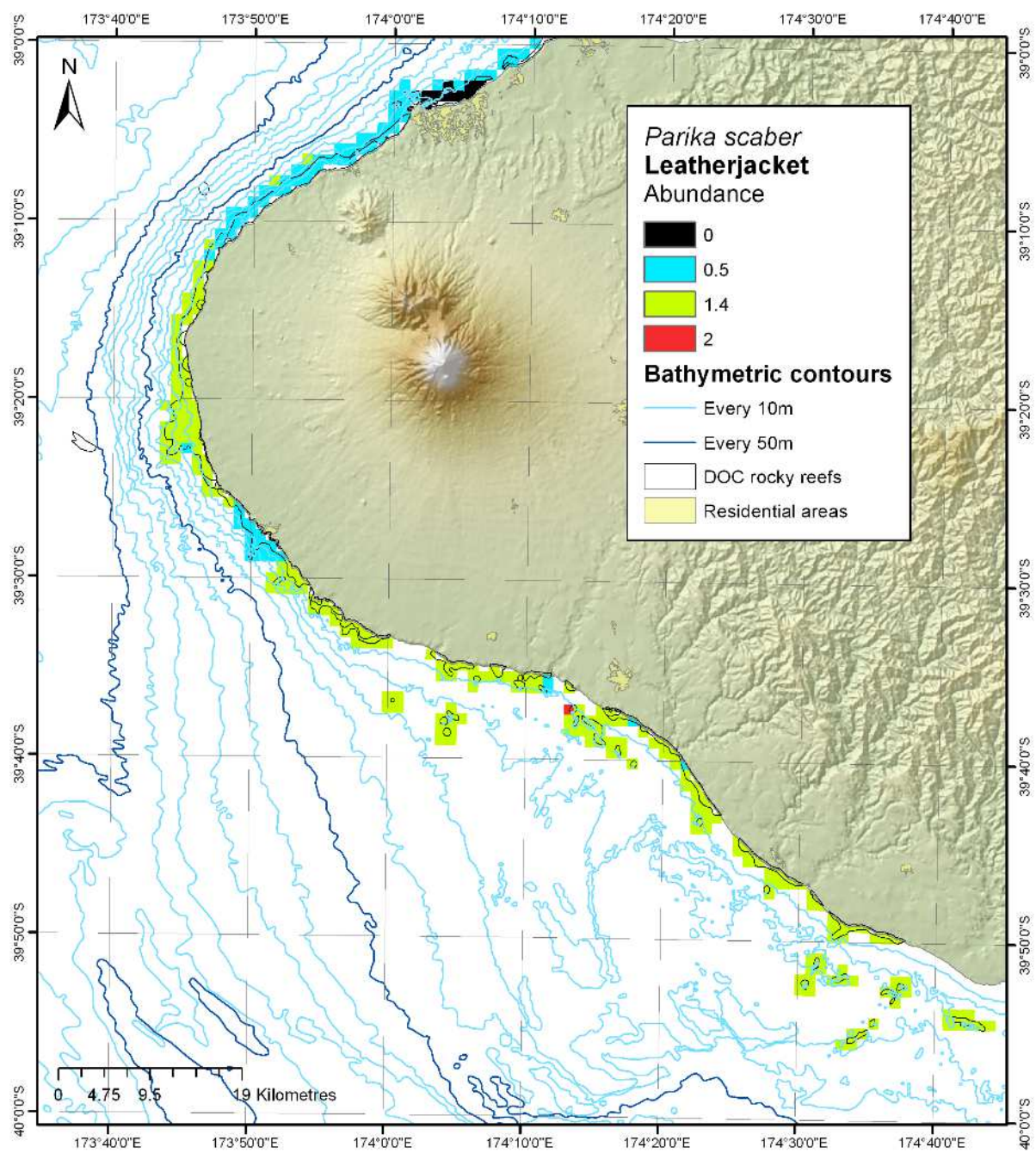


Figure A2.22: Modelled distribution and abundance of leatherjacket on Taranaki subtidal reefs.

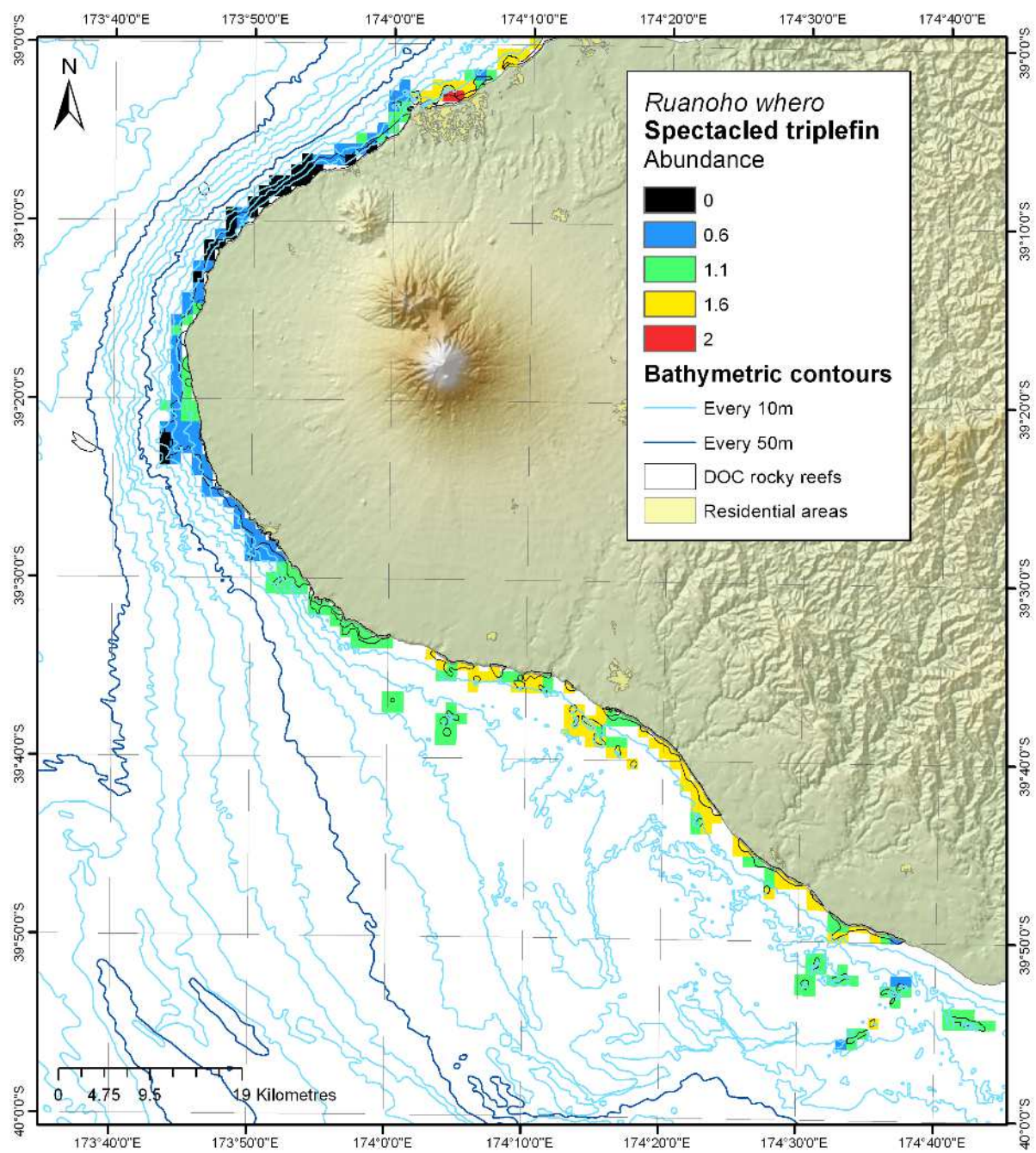


Figure A2.23: Modelled distribution and abundance of spectacled triplefin on Taranaki subtidal reefs.

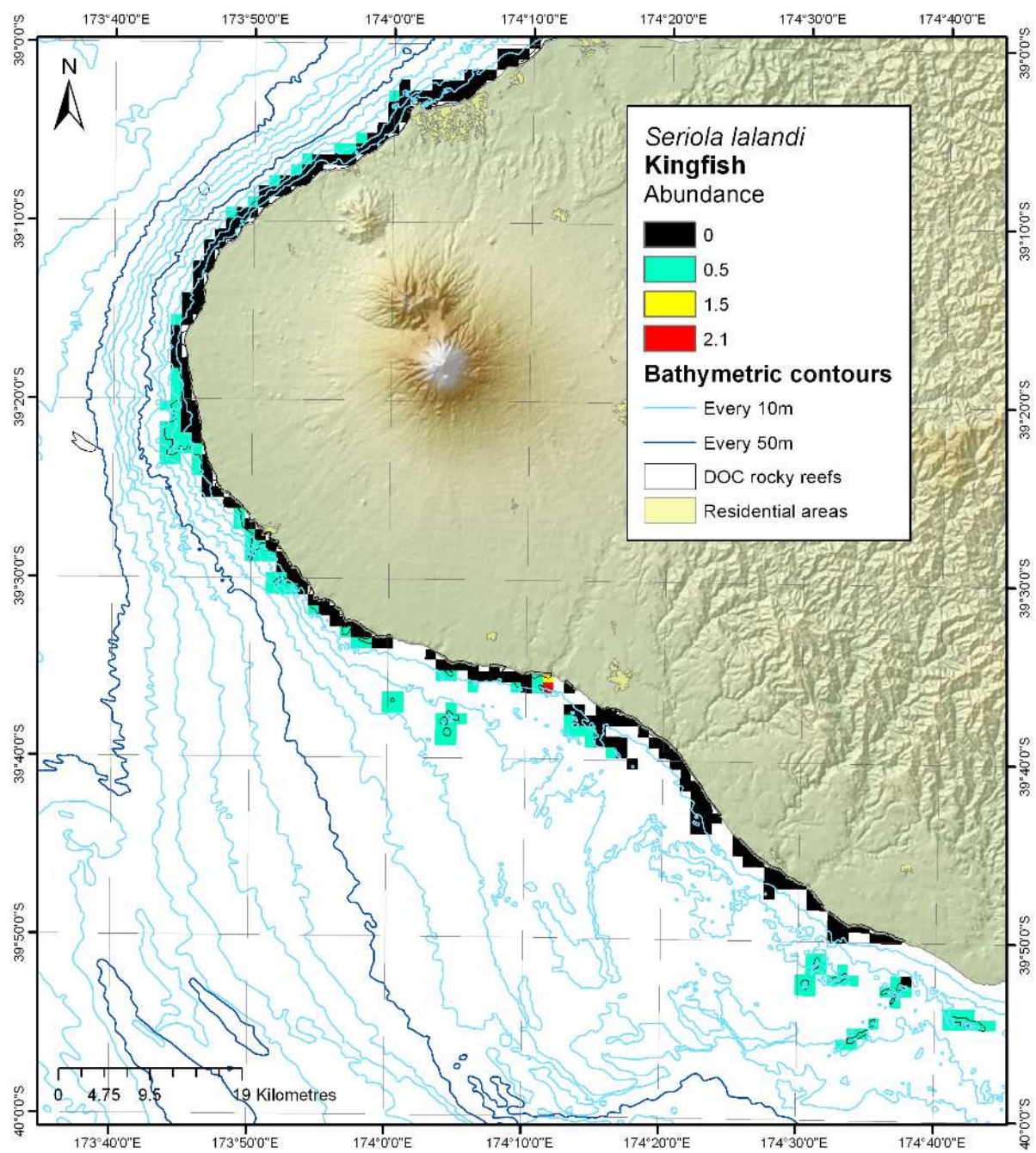


Figure A2.24: Modelled distribution and abundance of kingfish on Taranaki subtidal reefs.

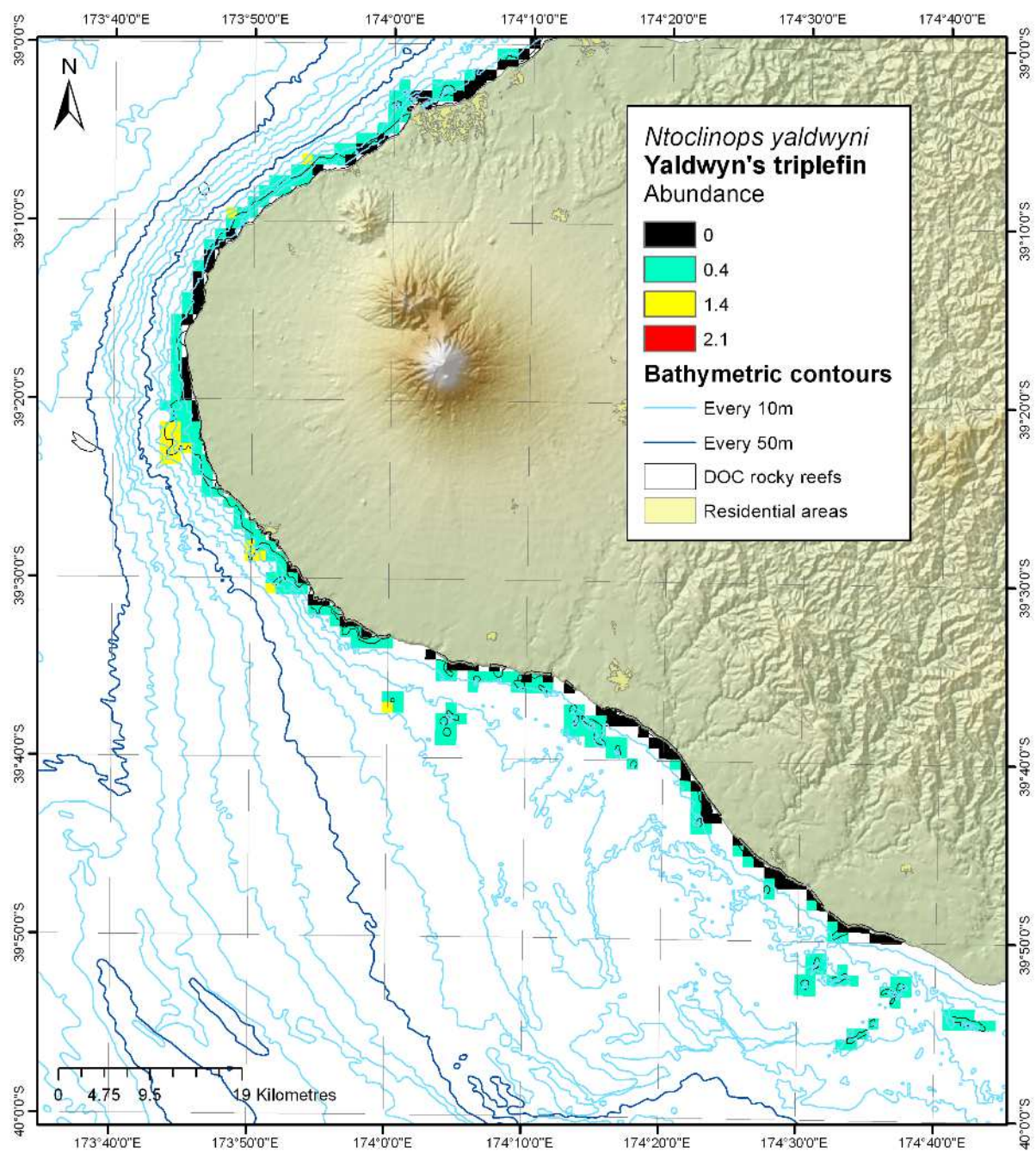


Figure A2.25: Modelled distribution and abundance of Yaldwyn's triplefin on Taranaki subtidal reefs.

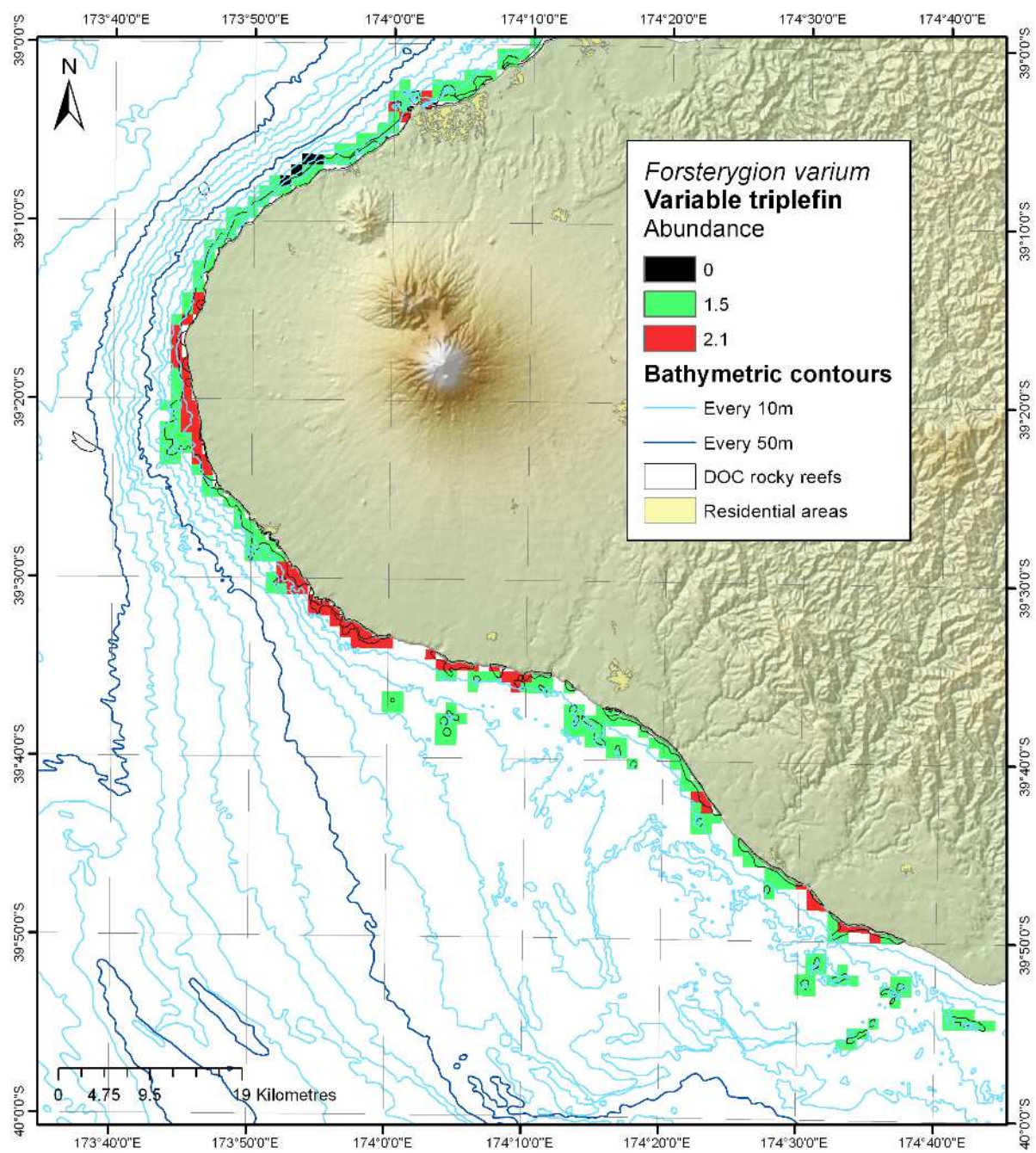


Figure A2.26: Modelled distribution and abundance of variable triplefin on Taranaki subtidal reefs.

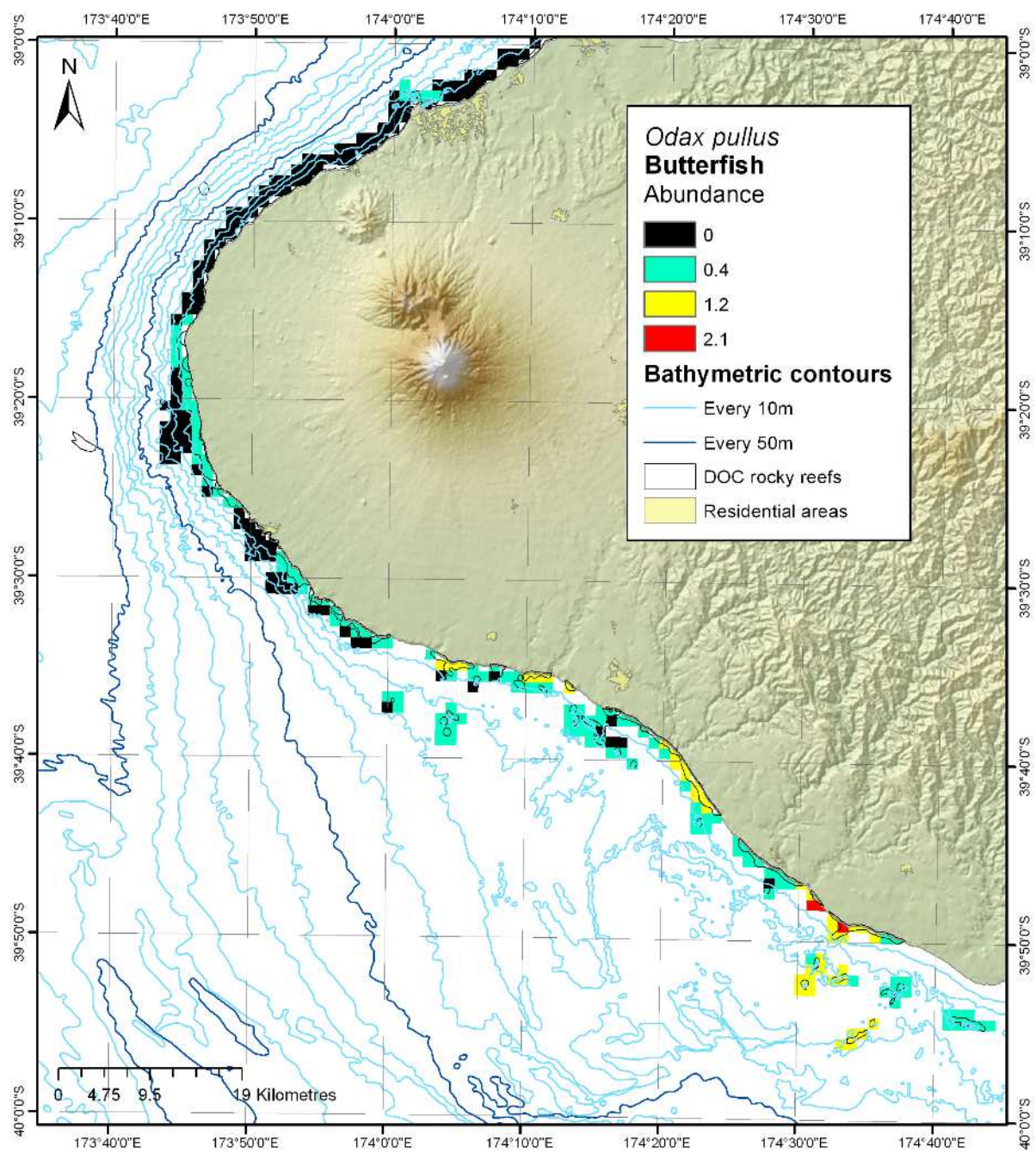


Figure A2.27: Modelled distribution and abundance of butterfish on Taranaki subtidal reefs.

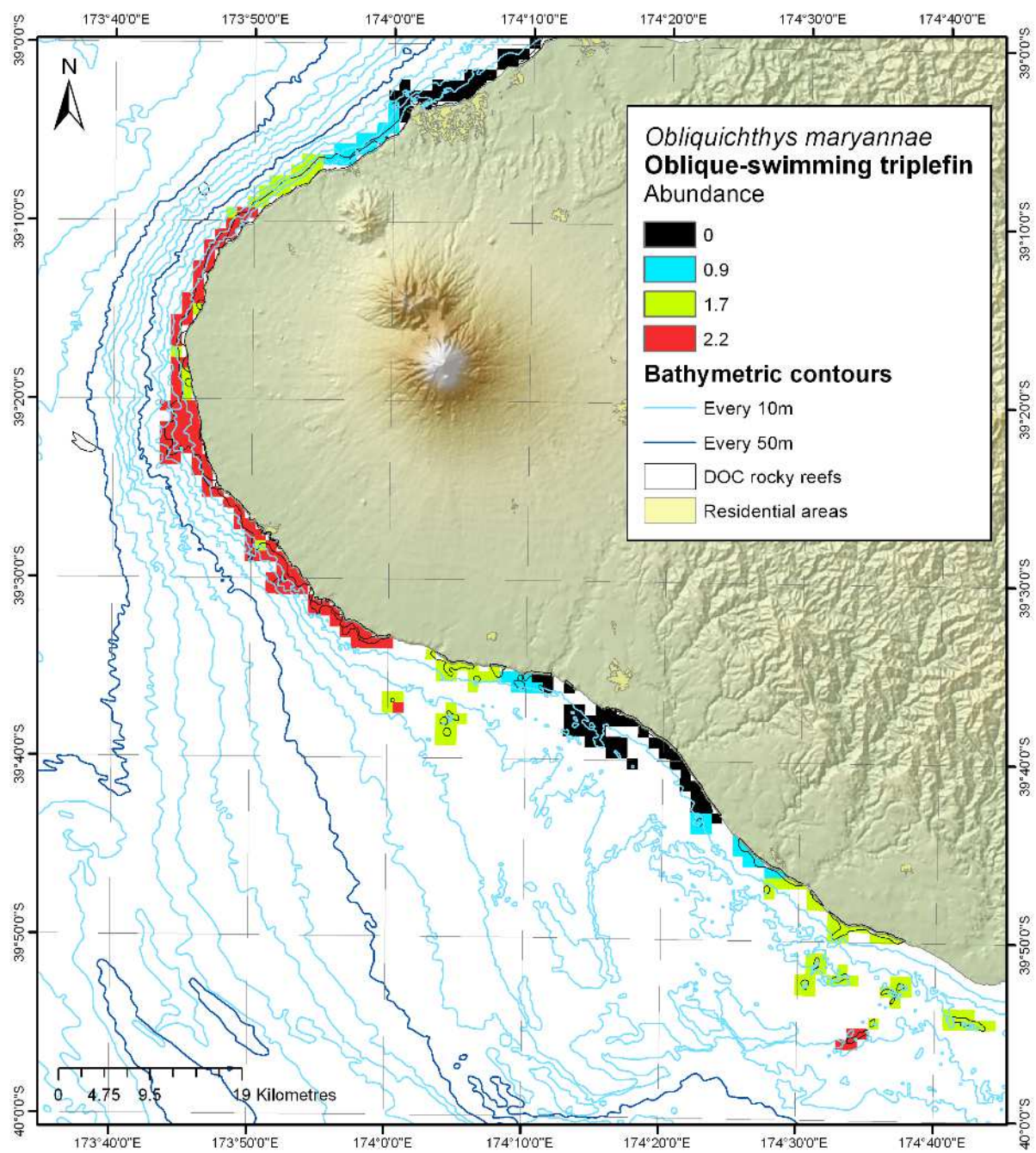


Figure A2.28: Modelled distribution and abundance of oblique-swimming triplefin on Taranaki subtidal reefs.

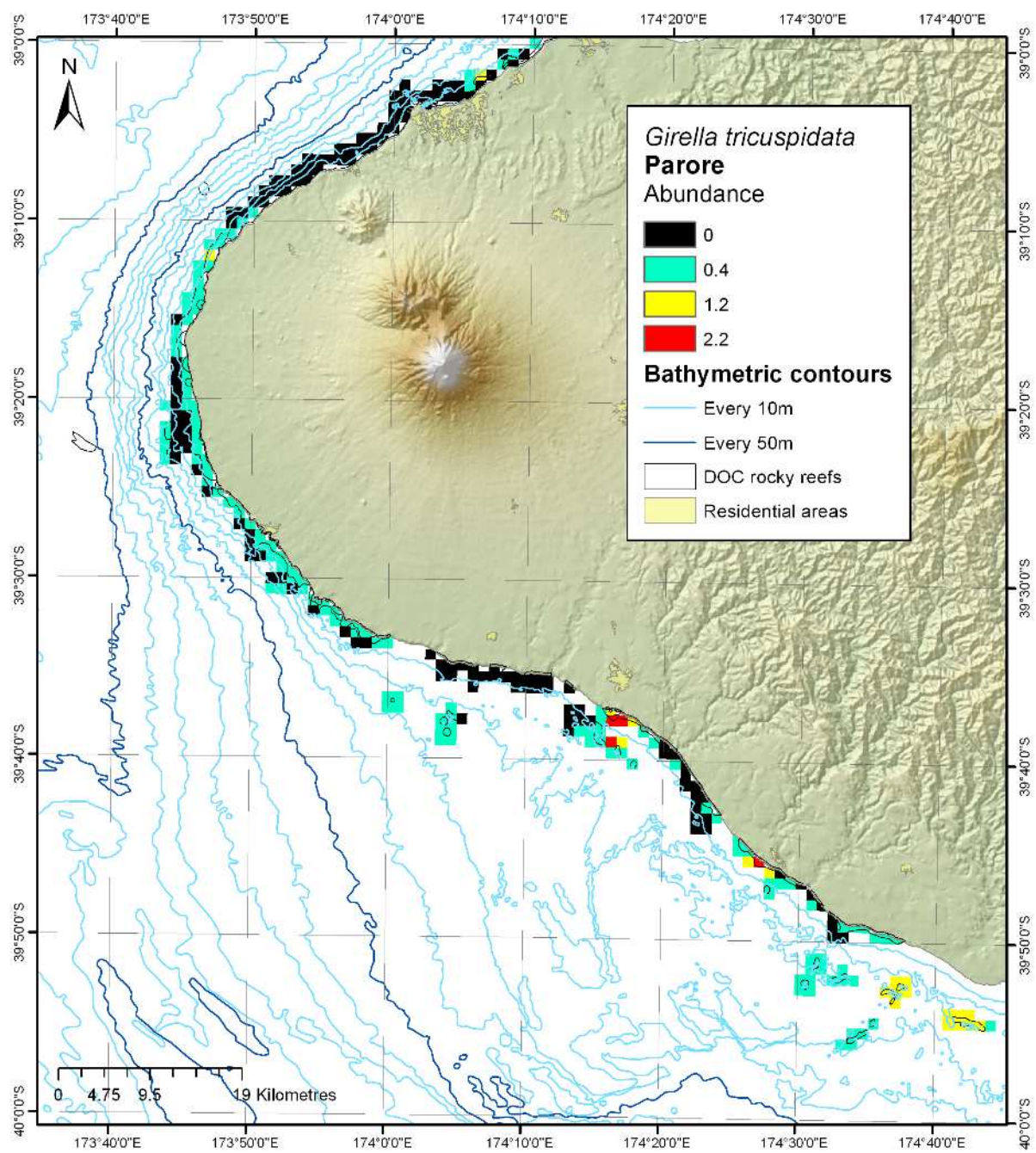


Figure A2.29: Modelled distribution and abundance of parore on Taranaki subtidal reefs.

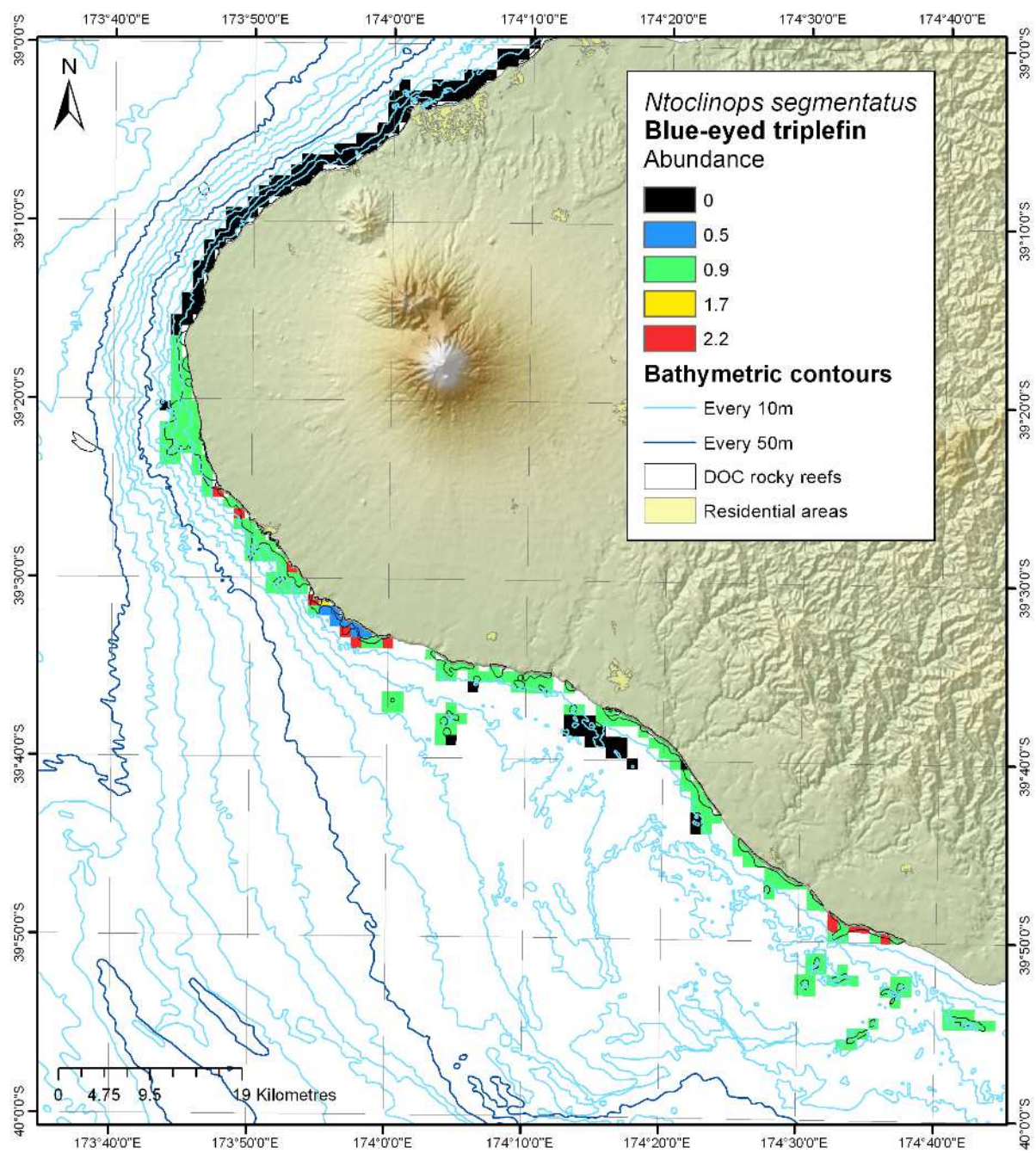


Figure A2.30: Modelled distribution and abundance of blue-eyed triplefin on Taranaki subtidal reefs.

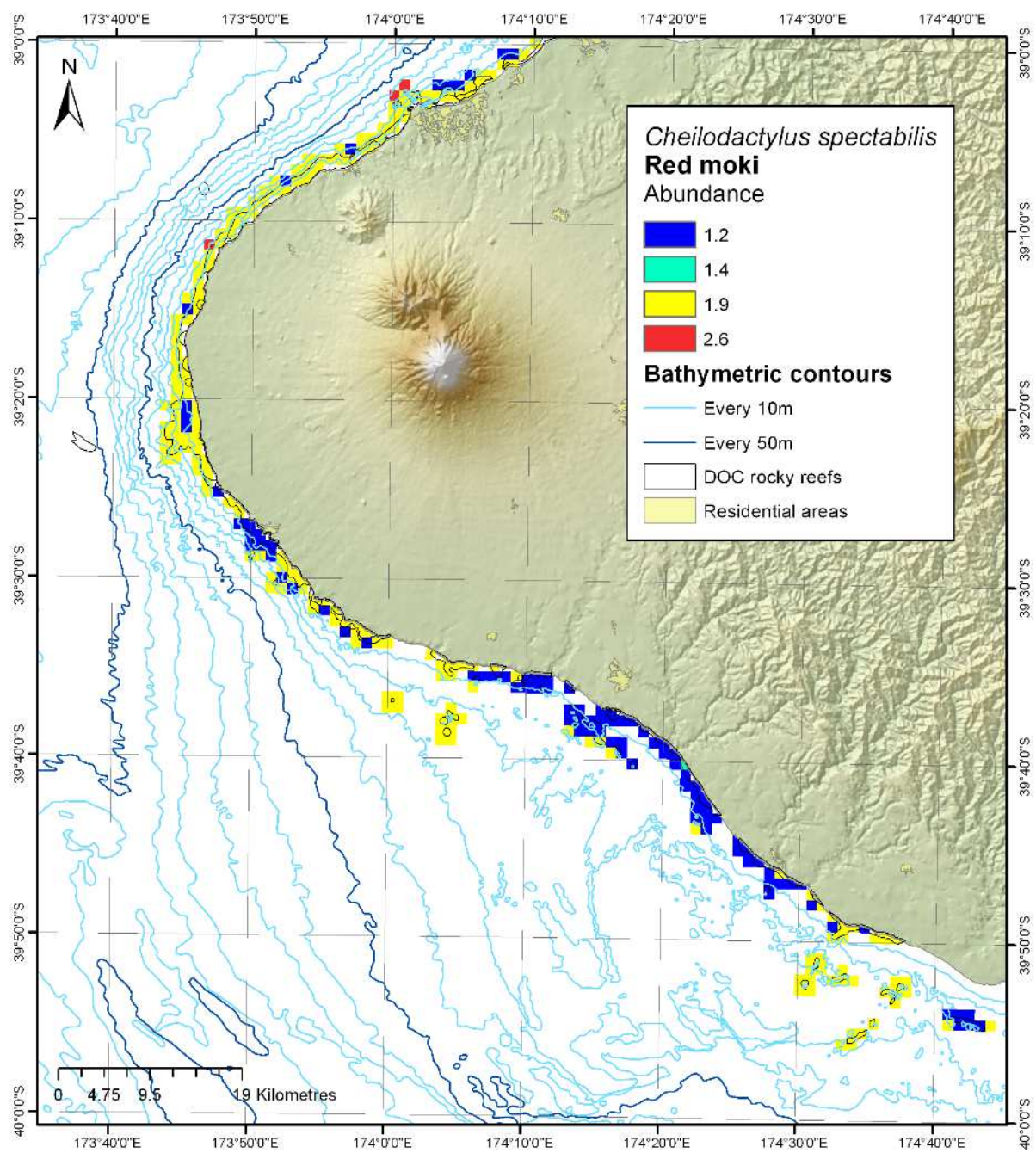


Figure A2.31: Modelled distribution and abundance of red moki on Taranaki subtidal reefs.

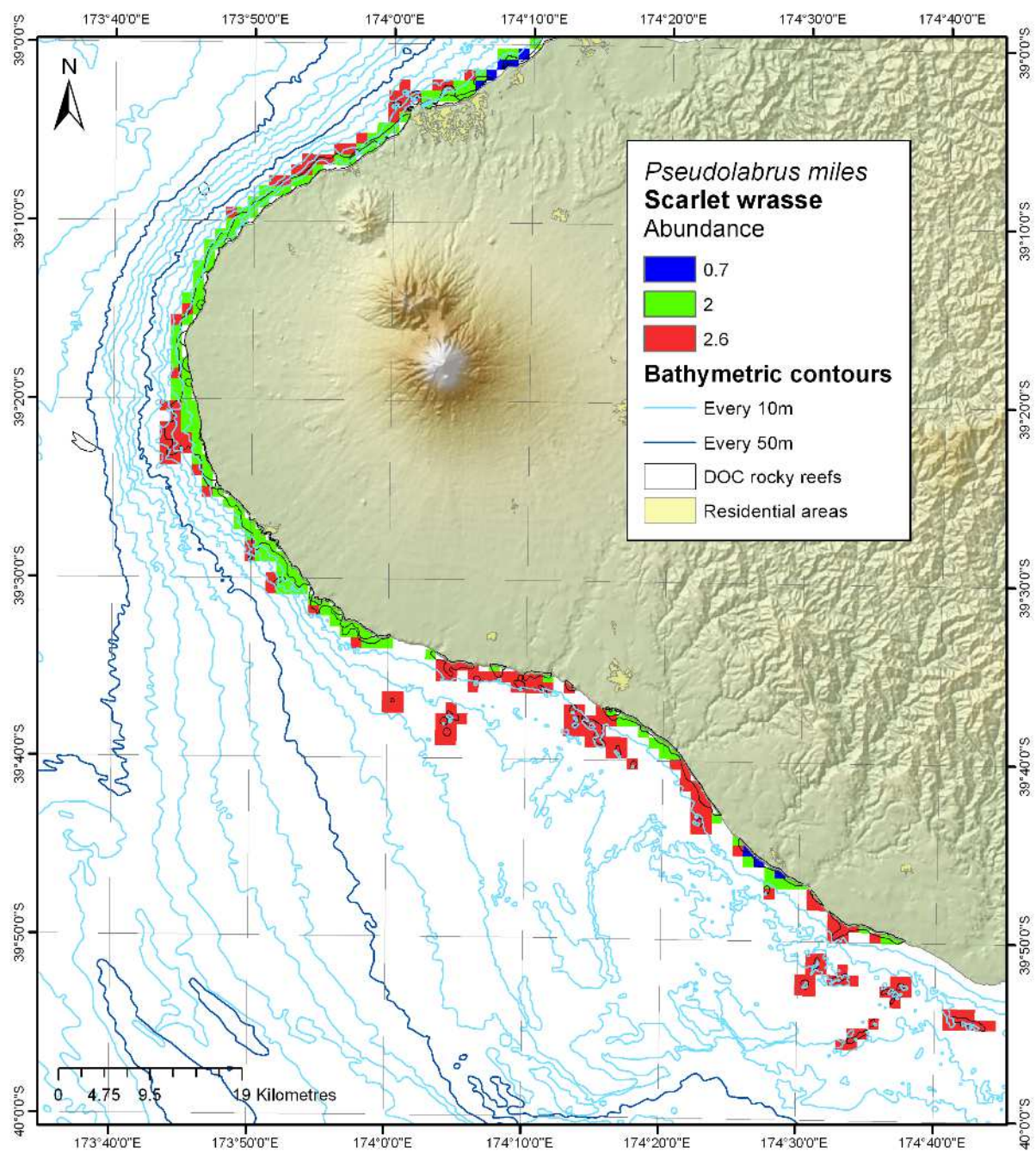


Figure A2.32: Modelled distribution and abundance of scarlet wrasse on Taranaki subtidal reefs.

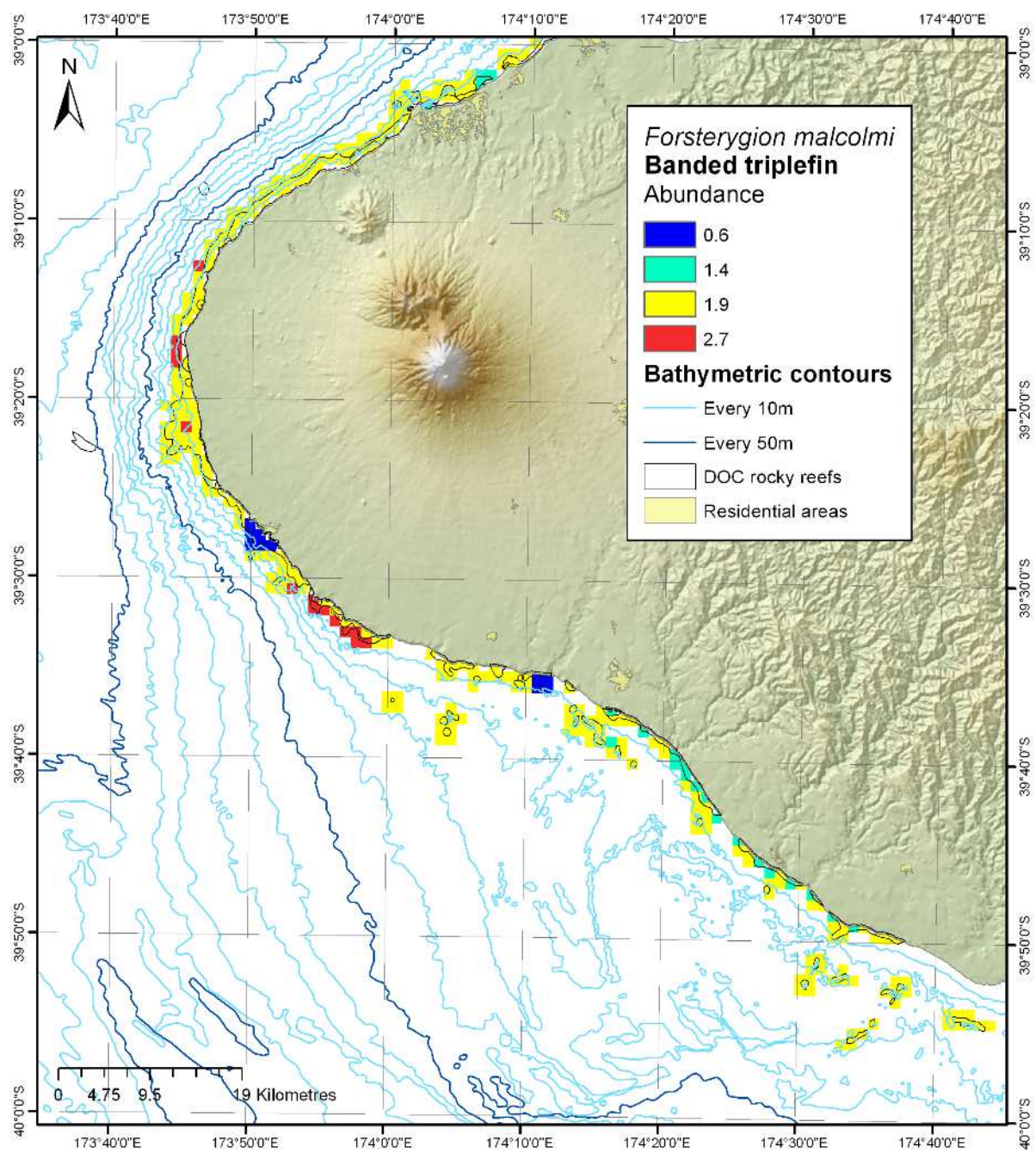


Figure A2.33: Modelled distribution and abundance of banded triplefin on Taranaki subtidal reefs.

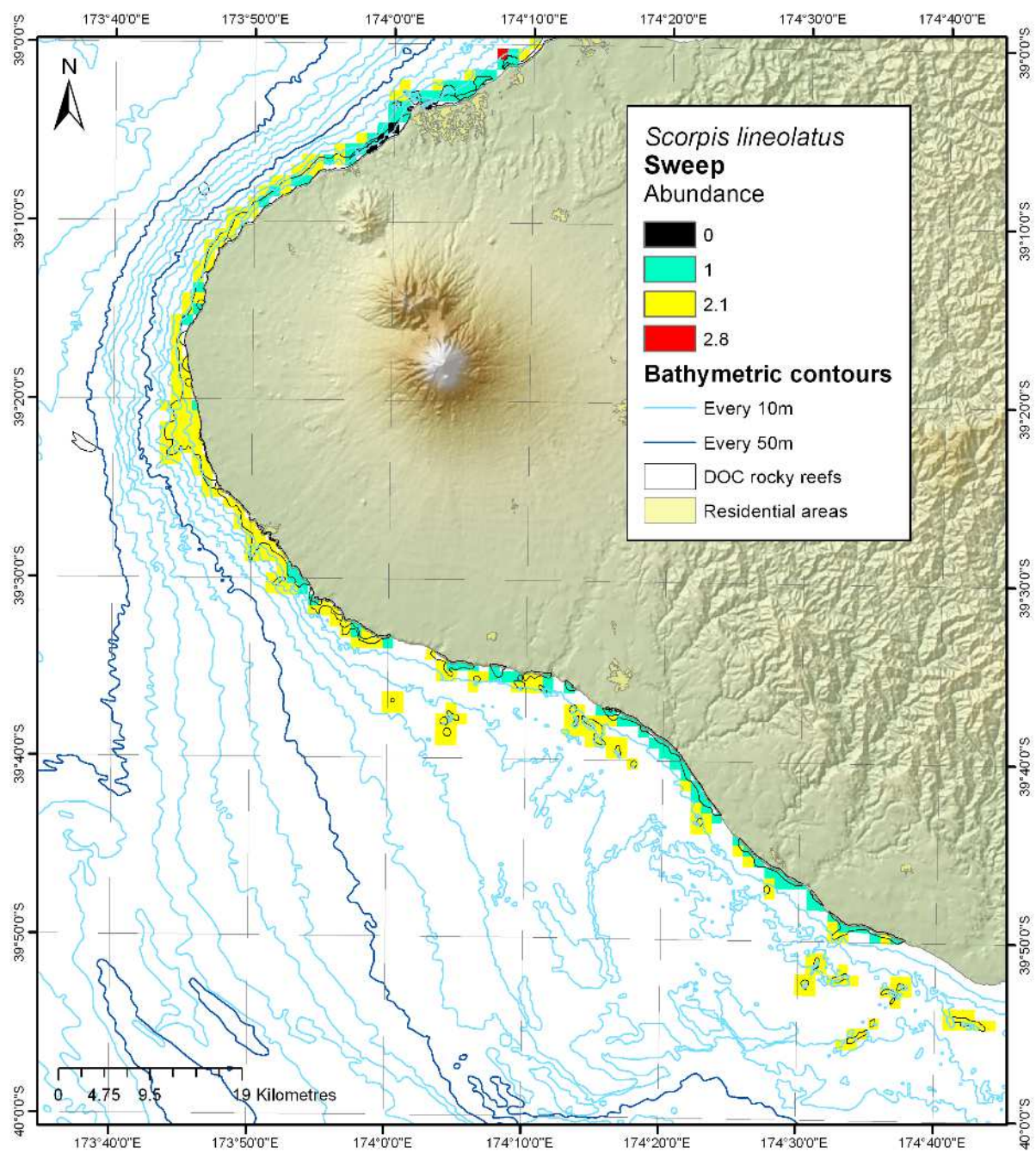


Figure A2.34: Modelled distribution and abundance of sweep on Taranaki subtidal reefs.

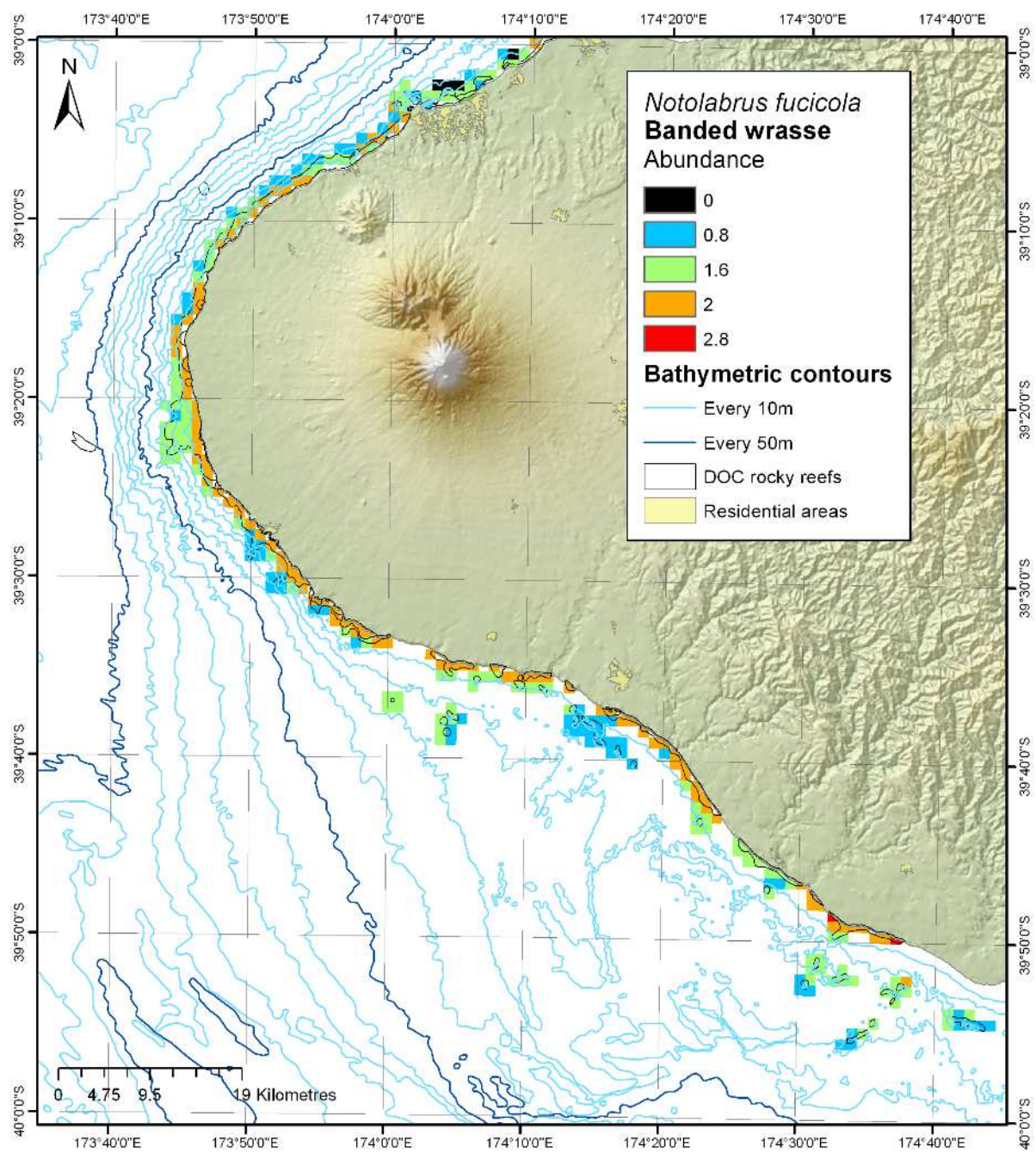


Figure A2.35: Modelled distribution and abundance of banded wrasse on Taranaki subtidal reefs.

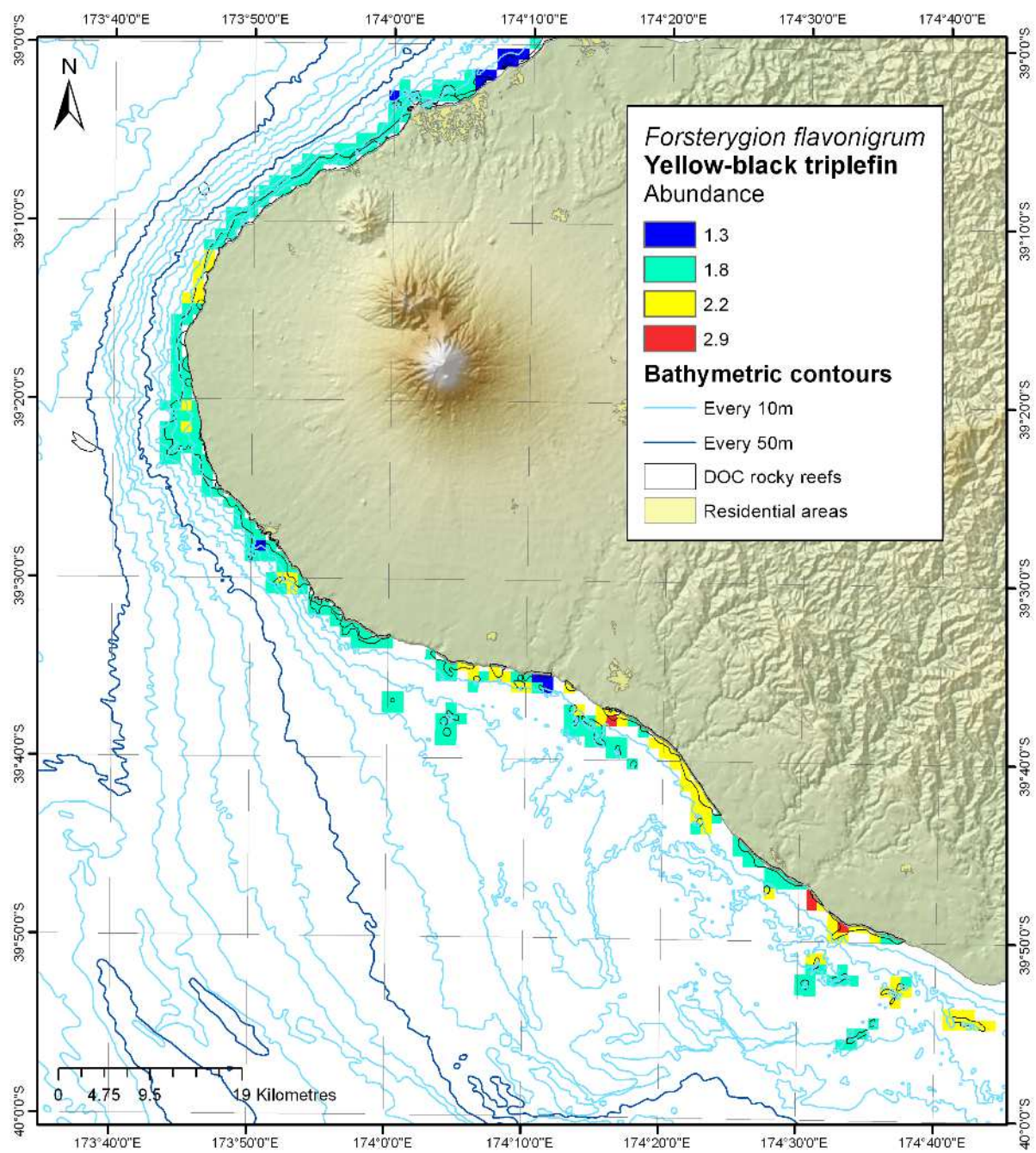


Figure A2.36: Modelled distribution and abundance of yellow-black triplefin on Taranaki subtidal reefs.

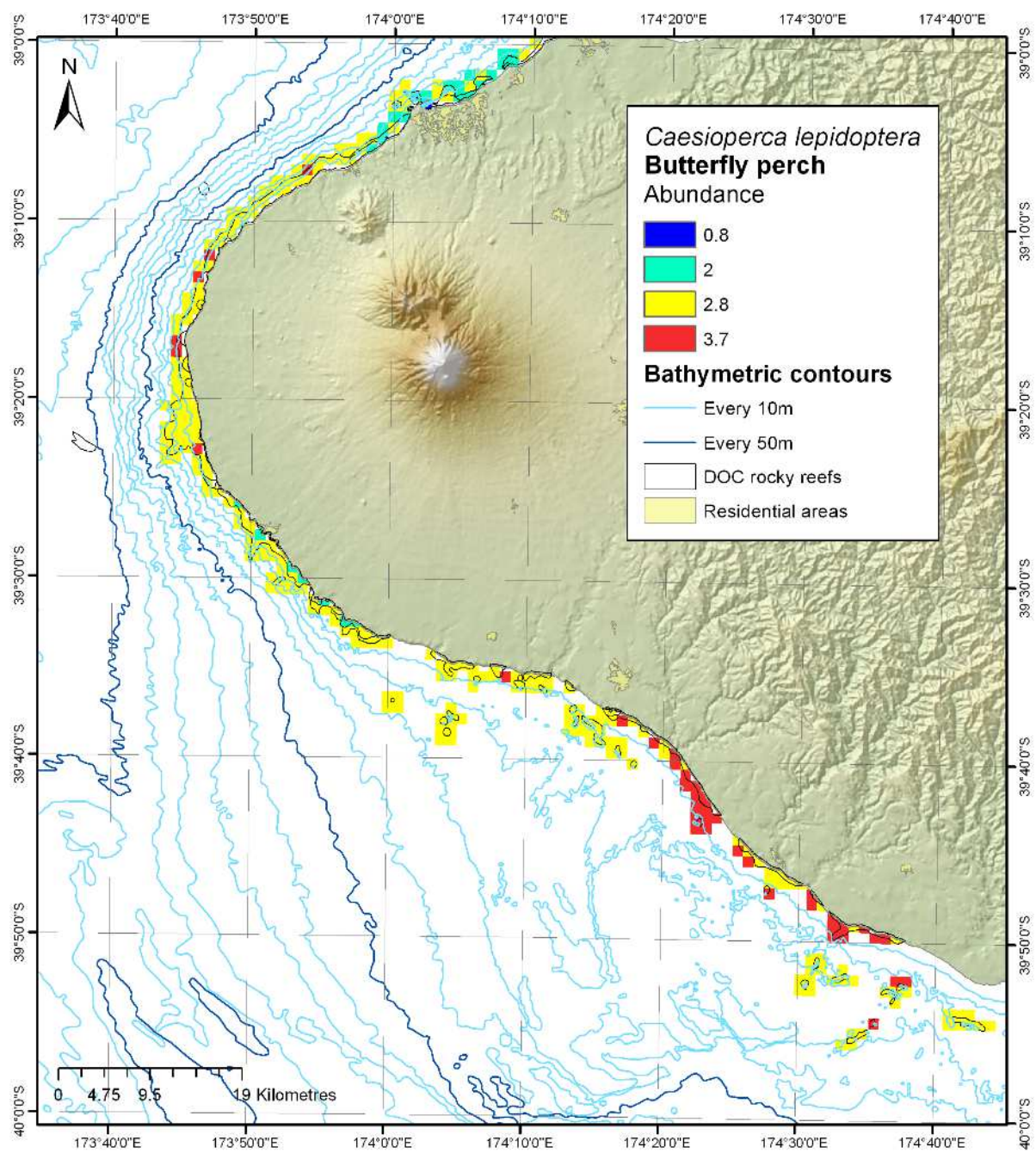


Figure A2.37: Modelled distribution and abundance of butterfly perch on Taranaki subtidal reefs.