



# Wetland Monitoring and Management Plan

## Mahinerangi Wind Farm Stage 2

**Tararua Wind Power Limited**

Prepared by:

**SLR Consulting New Zealand**

SLR Project No.: 810.031205.00001

8 October 2025

Revision: V1.0

## Revision Record

Revision	Date	Prepared By	Checked By	Authorised By
1.0	8 October 2025	Steve Rate	Hamish Dean Keren Bennett	Steve Rate

## Basis of Report

This report has been prepared by SLR on the instructions of our Client, in accordance with the agreed scope of work. It is intended to support the Client's application under the Fast Track Approvals Act 2024 and may be relied upon by the Expert Panel and relevant administering agencies for the purposes of assessing the application. While SLR has exercised due care in preparing this report, it does not accept liability for any use of the report beyond its intended purpose. Where information has been supplied by the Client or obtained from external sources, it has been assumed to be accurate unless otherwise stated.



## Table of Contents

<b>Basis of Report .....</b>	<b>i</b>
<b>1.0 Introduction .....</b>	<b>1</b>
<b>2.0 Objectives .....</b>	<b>1</b>
<b>3.0 Wetland Photopoint Monitoring .....</b>	<b>1</b>
3.1 Location of Photopoints .....	1
3.2 Timing of Monitoring .....	3
3.3 Data Collection .....	3
3.4 Reporting.....	3
<b>4.0 Plan Review .....</b>	<b>4</b>
<b>5.0 References.....</b>	<b>4</b>
<b>6.0 Closure.....</b>	<b>4</b>

## Figures

Figure A: Wetland photopoint monitoring sites. ....	2
---	---

## Appendices

Appendix A	Photopoint Monitoring Sites
Appendix B	Photopoint Monitoring Sheets



## 1.0 Introduction

Tararua Wind Power Limited (“TWP”), a fully owned subsidiary of Mercury NZ Limited, is progressing Stage 2 of the Mahinerangi Wind Farm which is to be known as “Puke Kapo Hau” (“the Project”, “Puke Kapo Hau” or “MWF Stage 2”).

The MWF is located on the eastern foothills of the Lammermoor Range, situated approximately 5 km north of Lake Mahinerangi and approximately 50 km west of Dunedin.

The Vegetation, Wetland, and Terrestrial Invertebrate Assessment (SLR 2025a) assessed natural inland wetlands under the National Environmental Standards for Freshwater 2020 (NES F) and actual and potential adverse effects of construction of the MWF on identified ecological values. A total of 34.1 ha of natural wetlands is located within 100 m of proposed Stage 2 earthworks sites (Figure A).

## 2.0 Objectives

This Wetland Monitoring and Management Plan (WMMP) describes the monitoring and management of wetlands within 100 m of proposed earthworks within the Mahinerangi Wind Farm Site and the associated Transmission Line Corridor.

The objectives of the Wetland Management and Monitoring Plan (WMMP) are to:

- Ensure the long-term ecological health and function of wetlands; and
- Manage and monitor wetlands within 100 m of proposed earthworks.

## 3.0 Wetland Photopoint Monitoring

### 3.1 Location of Photopoints

A total of 56 potential photopoint locations have been identified which may be refined on establishment (Figure A, Appendix A). Selection of photopoints was based on:

- Wetlands within 30 m of earthworks or surplus fill disposal sites (SFDs)<sup>1</sup> in the Wind Farm Site.
- Wetlands within 20 m of new access tracks in the Transmission Line Corridor.
- Excluding photopoints established for monitoring of:
  - The two stream rehabilitation sites, as identified in SLR (2025b).
  - The Wetland and Aquatic Compensation Sites, as identified in SLR (2025c).

Remaining wetlands are considered too distant from proposed works to be affected.

Photopoints should be established where there is a good view of the area of wetland that is likely to be affected by any works in the vicinity. Care should be taken to ensure that the photopoint does not become inaccessible during or following works.

---

<sup>1</sup> Wetland photopoints are located next to SFDs 5, 8, 15, 18, 23 (2 photopoints), 25 (2 photopoints), 26, 27, 32, 33, 36, 37 (2 photopoints), 46, 48, 52, and 54.





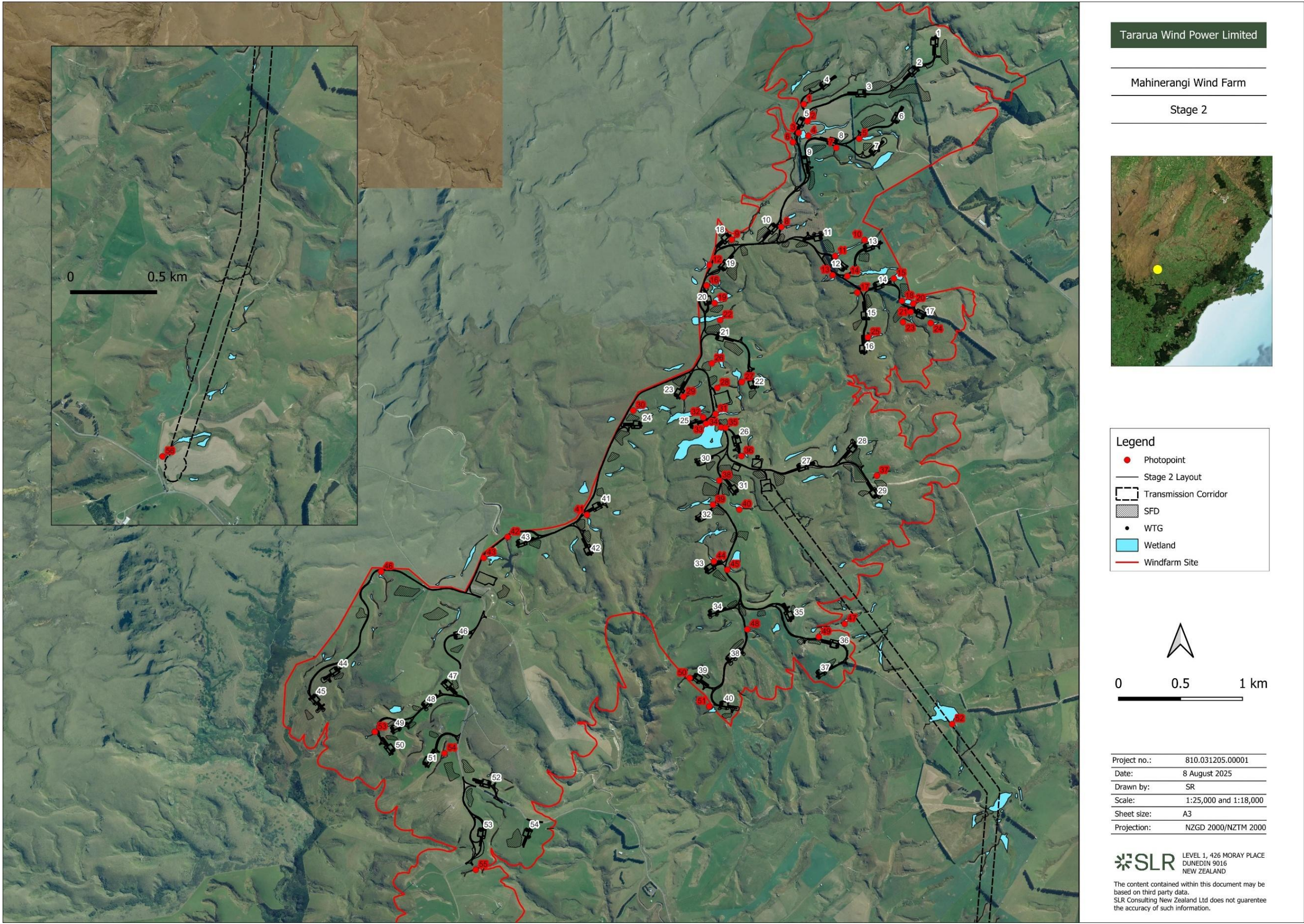


Figure A: Wetland photopoint monitoring sites.





## 3.2 Timing of Monitoring

Photographs will be taken at each photopoint prior to works commencing (baseline) and then on a three-monthly basis for the duration of the construction works. Following completion of the construction activities authorised under the resource consent, one more scheduled three-monthly monitoring event will be undertaken. If the monitoring indicates that no further monitoring is required (i.e., no changes to wetlands are observed), monitoring will be complete.

## 3.3 Data Collection

Photographs should preferably be taken using the same camera, on the same focal length, and the view matched to the previous photograph so that comparisons are more easily made between monitoring periods. Any obvious reference points should be included in the photograph. Where possible, shadows will be minimised. At least two exposures of each photoframe will be taken.

Where localised effects are recorded, and these are not clearly visible from the photopoint, additional photographs should be taken to clearly show the effects.

Photopoint monitoring should include completion of a photopoint monitoring sheet (Appendix A), which includes:

- Date of photograph.
- Site number.
- GPS coordinates (NZTM).
- Camera type.
- Photograph number.
- Photograph bearing (degrees, magnetic).
- Notes on any changes to bed profile and hydrological regime, and any adverse effects on wetlands and whether these effects may be attributable to the construction works.
- The extent and magnitude of any changes.

## 3.4 Reporting

If any major adverse effects (e.g., clearly visible sedimentation, infilling, or scouring) are observed during monitoring or at any other time, the project manager will be notified immediately so that remedial actions are not delayed.

A report will be prepared following each three-monthly monitoring event which summarises the findings of the monitoring and any changes and/or adverse effects that may have occurred since the previous monitoring event. Any non-compliance with the consent conditions will be assessed. Reports containing illustrative photographs will be provided to Otago Regional Council. All photopoint photographs will be supplied in digital format, with file names containing the photopoint number and monitoring date.



## 4.0 Plan Review

This WMMP may be reviewed one year following the commencement of construction for the purpose of reviewing monitoring methodologies. Any proposed changes will be submitted to Otago Regional Council for review.

## 5.0 References

SLR. 2025a. Vegetation, Wetland, and Terrestrial Invertebrate Assessment. Mahinerangi Wind Farm Stage 2. Prepared for Tararua Wind Power Limited.

SLR. 2025b. Rehabilitation Management Plan. Mahinerangi Wind Farm Stage 2. Prepared for Tararua Wind Power Limited.

SLR. 2025c. Wetland and Aquatic Compensation Plan. Mahinerangi Wind Farm Stage 2. Prepared for Tararua Wind Power Limited.

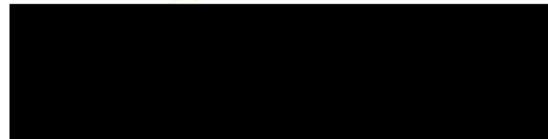
## 6.0 Closure

Sincerely,

**SLR Consulting New Zealand**



**Steve Rate**  
Senior Ecologist



**Hamish Dean**  
Principal Ecologist



**Keren Bennett (Reviewer)**  
Technical Director - Ecology





# Appendix A Photopoint Monitoring Sites

## Wetland Monitoring and Management Plan

**Mahinerangi Wind Farm Stage 2**

**Tararua Wind Power Limited**

SLR Project No.: 810.031205.00001

8 October 2025



**Table A-1: Photopoints.**

Photopoint number	Northing (NZTM)	Easting (NZTM)	SFD monitored
1	1360032	4931477	
2	1360060	4931340	SFD 5
3	1359990	4931247	
4	1360067	4931222	
5	1360478	4931200	SFD 8
6	1359943	4931171	
7	1360292	4931126	
8	1359850	4930488	
9	1359450	4930386	SFD 15
10	1360520	4930384	
11	1360284	4930253	SFD 18
12	1359270	4930182	
13	1360263	4930099	
14	1360382	4930092	
15	1360758	4930073	SFD 23
16	1359247	4930016	
17	1360463	4929959	
18	1360823	4929892	SFD 23
19	1359312	4929875	SFD 25
20	1360914	4929870	
21	1360893	4929804	
22	1359357	4929737	SFD 25
23	1360830	4929721	SFD 27
24	1361055	4929714	SFD 26
25	1360548	4929599	
26	1359289	4929389	SFD 32
27	1359531	4929238	
28	1359333	4929191	SFD 33
29	1359059	4929120	
30	1358655	4929008	SFD 36
31	1359319	4928981	
32	1359220	4928953	
33	1359242	4928902	
34	1359364	4928873	SFD 37



Photopoint number	Northing (NZTM)	Easting (NZTM)	SFD monitored
35	1359400	4928870	SFD 37
36	1359528	4928642	
37	1360620	4928484	SFD 46
38	1359349	4928444	
39	1359298	4928250	SFD 48
40	1359511	4928211	
41	1358282	4928168	SFD 52 and 54
42	1357642	4927990	
43	1357450	4927822	
44	1359306	4927794	
45	1359414	4927726	
46	1356622	4927710	
47	1360360	4927291	
48	1359576	4927246	
49	1360152	4927186	
50	1359110	4926853	
51	1359268	4926624	
52	1361228	4926483	
53	1356571	4926419	
54	1357133	4926247	
55	1357385	4925308	
56	1360930	4923021	





# Appendix B    Photopoint Monitoring Sheets

## **Wetland Monitoring and Management Plan**

**Mahinerangi Wind Farm Stage 2**

**Tararua Wind Power Limited**

SLR Project No.: 810.031205.00001

8 October 2025



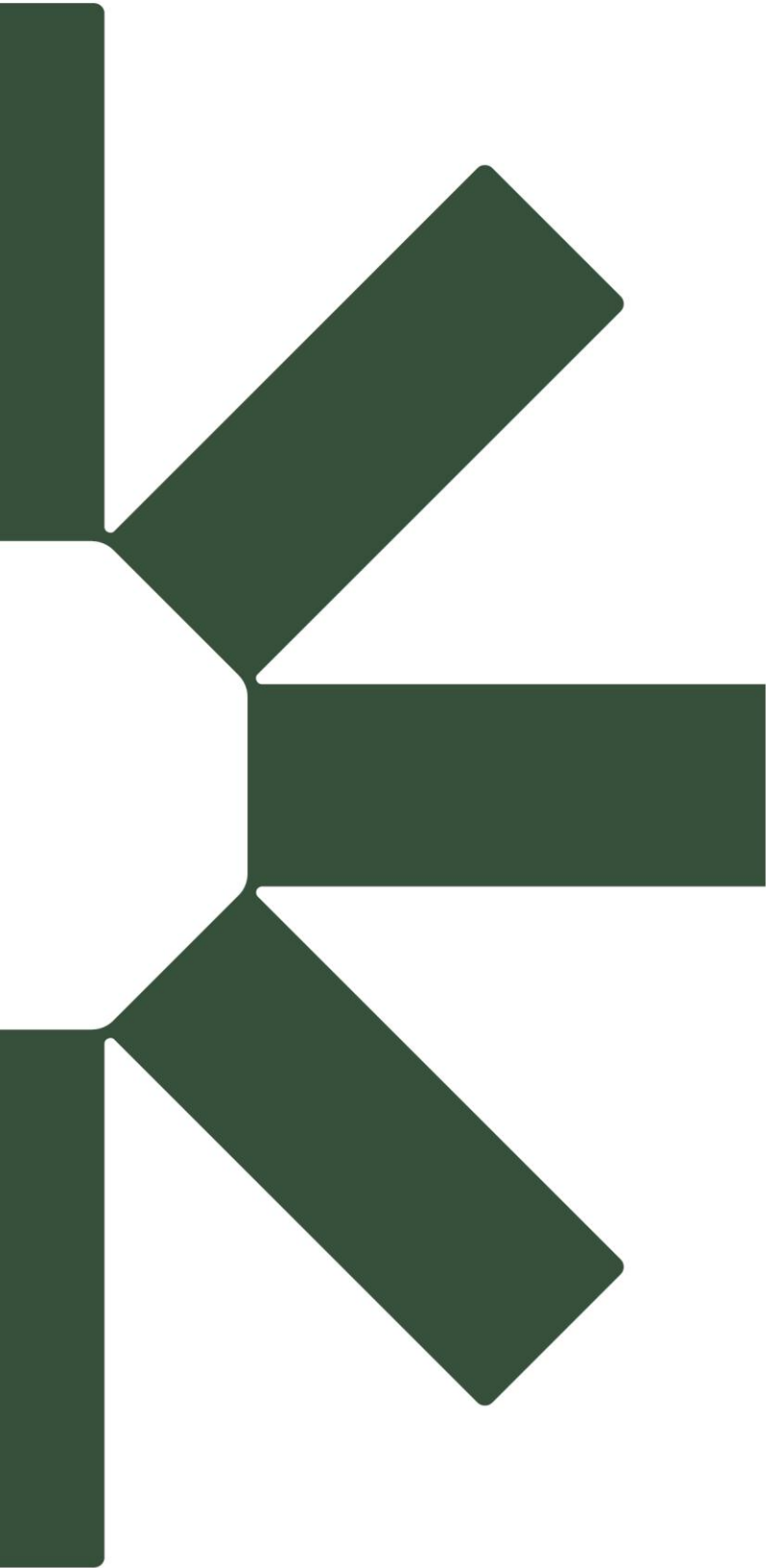
<b>Date</b>	
<b>Recorded by</b>	
<b>Camera</b>	

[illegible]



<b>Date</b>	
<b>Recorded by</b>	
<b>Camera</b>	

[illegible]



Making Sustainability Happen