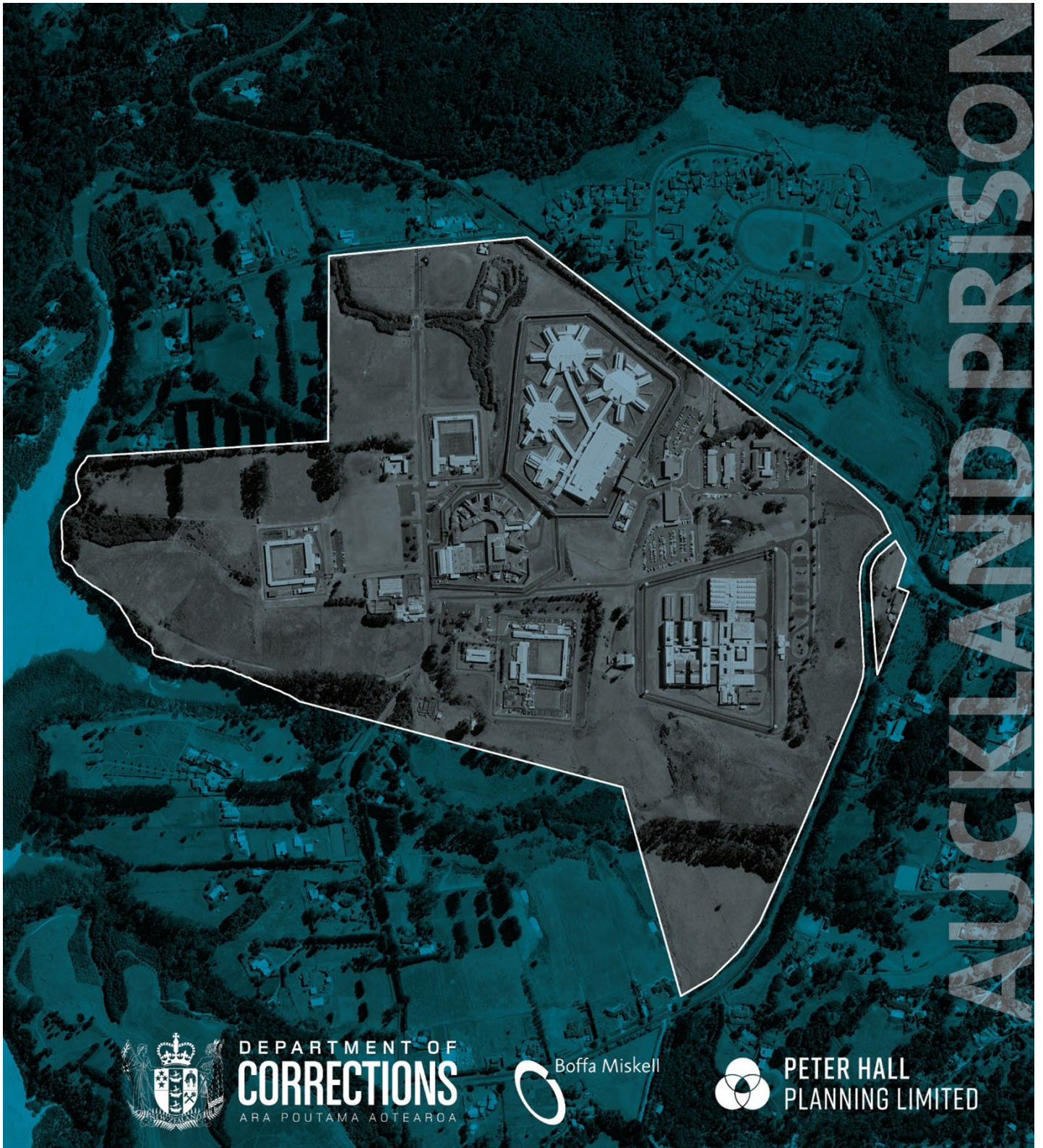


Auckland Prison Capacity Increase

Volume 2 – Appendix 2D
Social Impact Assessment



DEPARTMENT OF
CORRECTIONS
ARA POUTAMA AOTEAROA



Boffa Miskell



PETER HALL
PLANNING LIMITED



Ara Poutama Aotearoa - The Department of Corrections

Auckland Prison Capacity Increase

Social Impact Assessment

26 March 2026

1-E0341.00



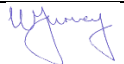


Auckland Prison Capacity Increase
Social Impact Assessment

Ara Poutama Aotearoa - The Department of Corrections

WSP
Auckland
Level 3 The Westhaven
100 Beaumont St
Auckland 1010, New Zealand
+64 9 355 9500
wsp.com/nz

REV	DATE	DETAILS
Final Report	26/03/2026	Final Report for Lodgement

	NAME	DATE	SIGNATURE
Prepared by:	Hilary Konigkramer	26/03/2026	
Reviewed by:	Wendy Turvey	26/03/2026	
Approved by:	Wendy Turvey	26/03/2026	

This report (**'Report'**) has been prepared by WSP exclusively for Boffa Miskell Limited, on behalf of The Department of Corrections - Ara Poutama Aotearoa (**'Client'**) in relation to the independent assessment of potential social impacts associated with the proposed Auckland Prison capacity increase (**'Purpose'**) and in accordance with Sub-consultant Agreement with the Client dated 31 May 2025. The findings in this Report are based on and are subject to the assumptions specified in the Report. WSP accepts no liability whatsoever for any reliance on or use of this Report, in whole or in part, for any use or purpose other than the Purpose or any use or reliance on the Report by any third party. If it is intended to support an application under the Fast-track Approvals Act 2024, this report may be relied upon by the Expert Panel and relevant administering agencies for the purposes of assessing the application.

In preparing the Report, WSP has relied upon data, surveys, analysis, designs and plans and other information (**'Client Data'**) provided by or on behalf of the Client. Except as otherwise stated in the Report, WSP has not verified the accuracy or completeness of the Client Data. To the extent that statements, opinions, facts, information, conclusions and/or recommendations in this Report are based in whole or part on the Client Data, those conclusions are contingent upon the accuracy and completeness of the Client Data. WSP will not be liable in relation to incorrect conclusions or findings in the Report should any Client Data be incorrect or have been concealed, withheld, misrepresented or otherwise not fully disclosed to WSP.



TABLE OF CONTENTS

	ABBREVIATIONS	III
	EXECUTIVE SUMMARY	IV
1	INTRODUCTION	1
1.1	PURPOSE AND SCOPE OF THE STUDY	1
1.2	STATEMENT OF QUALIFICATIONS AND RELEVANT EXPERIENCE	1
2	PROPOSAL DESCRIPTION	2
2.1	AUCKLAND PRISON SITE CONTEXT	2
2.2	THE PROPOSAL	3
2.3	PARAMETERS APPROACH.....	3
3	METHODOLOGY	4
3.1	ASSESSMENT FRAMEWORK.....	4
3.2	METHODOLOGY	4
3.3	ASSUMPTIONS AND EXCLUSIONS	9
4	SOCIAL CONTEXT.....	10
5	EXISTING SOCIAL ENVIRONMENT	13
5.1	WIDER COMMUNITY	13
5.2	LOCAL COMMUNITY PROFILE	14
5.3	LOCAL STUDY AREA.....	14
6	ASSESSMENT	17
6.1	WAY OF LIFE	17
6.2	COMMUNITY	22
6.3	ENVIRONMENT	28
6.4	WELLBEING	30
6.5	FEARS, PERCEPTIONS AND ASPIRATIONS	31
6.6	ASSESSMENT SUMMARY	31
6.7	PROPOSED CONDITIONS.....	34



7 CONCLUSION.....36

APPENDIX A: EXPERT SUMMARY STATEMENT

APPENDIX B: LITERATURE REVIEW

APPENDIX C: CENSUS BASELINE DATA

APPENDIX D: SIA CONSULTATION OUTCOMES

APPENDIX E: IMPACT ASSESSMENT MATRIX

ABBREVIATIONS

CLG	Community Liaison Group
Corrections	Department of Corrections - Ara Poutama Aotearoa
EPA	Environmental Protection Agency
FTAA	Fast-track Approvals Act 2024
IAIA	International Association for Impact Assessment
ITA	Integrated Traffic Assessment
NOR	Notice of Requirement
NZDep	New Zealand Index of Deprivation
NZ Police	New Zealand Police
PRRA	Pāremoremo Ratepayers and Residents' Association
RMA	Resource Management Act 1991
SIA	Social Impact Assessment
UHLB	Upper Harbour Local Board
WSP	WSP New Zealand Limited

EXECUTIVE SUMMARY

The Department of Corrections - Ara Poutama Aotearoa (Corrections) proposes to alter the designation at Auckland Prison, Pāremoremo, to enable capacity to be increased from the current designation maximum from 681 to 1,220 prisoners. This increase in capacity will enable new facilities for 960 low to high security prisoners to be built, which will be operated alongside the existing maximum security facility (which can accommodate 260 prisoners).

The Social Impact Assessment (SIA) provides an assessment of the potential social impacts of the proposal beyond the Site, with a focus on the community impacts. The overall intention of the SIA is to ensure that the negative impacts are identified, understood, and effectively avoided, remedied or mitigated, and that the potential benefits of the proposal are acknowledged and enhanced where possible. The social impacts have been evaluated using the International Association for Impact Assessment (IAIA) framework.

Key to the assessment process was the understanding of the current social context (baseline) and the collection of data using consultation methods that targeted residents in close proximity to the prison and representatives of key stakeholder groups. In addition, a 'social lens' was applied to several specialist studies which included a review of the findings, and where relevant the mitigation measures applied, by economic, traffic, noise, lighting, and visual specialists.

The proposal is listed as a project eligible to apply for approvals under the Fast-track Approvals Act 2024 (FTAA), the purpose of which is to streamline the consenting and permitting process for projects that offer significant regional and national benefits. The SIA has confirmed that the proposal represents significant social benefits at a local, regional and national level. In summary, the most significant positive social impact of the proposal was identified as:

- Social upliftment and improved quality of life as a result of employment generation, benefits for businesses and the economy, most significantly in the construction phase and a meaningful impact associated with the operational phase of the proposal.

The negative effects of the proposal post mitigation were assessed to be low, with the exception of the following local impacts which were of moderate significance:

- Reduced accessibility due to increased traffic volumes including heavy vehicles during the construction phase, which may cause delays and congestion and impact on individuals' daily movements and behaviours.
- Change in the sense of place and character of the local area during to construction phase activities.

The recommendations identified in the relevant technical studies are supported and additional social mitigation measures have been identified to ensure that the potential social impacts are appropriately avoided, remedied or mitigated.

Designation conditions have been proposed requiring the establishment of a Community Liaison Group and a complaints procedure.

The Auckland Prison has been integral to the local environment for close to 60 years. Whilst there are some within the community that are opposed to the proposal, and have concerns and fears regarding the potential impacts, the SIA has determined that the anticipated impacts can be managed to an acceptable level. Sharing of information and the development of a constructive relationship between the prison and the community is key to addressing community concerns. Improved communication and consultation have the potential to create the foundation for future collaboration between the prison and the local community.

1 INTRODUCTION

1. The Department of Corrections - Ara Poutama Aotearoa (Corrections) proposes to increase the maximum prisoner capacity at the existing Auckland Prison, located in Pāremoremo, Auckland. Corrections proposes to submit a Notice of Requirement (NOR) to the Environmental Protection Agency (EPA) to alter the current designation to increase the maximum capacity that can be accommodated at the prison.
2. The proposal is listed as a project eligible to apply for approvals under the Fast-track Approvals Act 2024 (FTAA), which introduces a streamlined consenting and permitting process for projects that offer significant regional and national benefits. The Substantive Application Report for an alteration to an existing designation, prepared in accordance with the requirements of the FTAA, involves inputs from a number of disciplines, including social experts. WSP New Zealand Limited (WSP) has been appointed to undertake an independent Social Impact Assessment (SIA) to inform the decision-making process.

1.1 PURPOSE AND SCOPE OF THE STUDY

3. The purpose of the SIA was to identify and fully consider the potential positive and negative impacts of the proposed increase in capacity at the Auckland Prison on the social environment within the local, regional and national context. The intention of the SIA was to ensure that the negative impacts are identified, understood, and avoided, remedied or mitigated, and that potential benefits of the proposal are acknowledged and enhanced where possible.
4. The scope of the SIA included:
 - Development of an understanding of the social context associated with the proposal, supported by the collection and analysis of baseline data.
 - Review of relevant specialist and technical studies associated with the proposal through a 'social lens', and review of feedback from the consultation process led by Corrections.
 - Bespoke consultation with identified key informants to collect primary data to inform the understanding of the social context and the identification and assessment of impacts.
 - Evaluation of potential social impacts, and identification of appropriate mitigation.
5. The methodology used in the preparation of this assessment is outlined in **Section 2**. The SIA is part of a wider suite of technical reports informing the Substantive Application Report and, while it overlaps with topics which are the focus of other technical reports, it examines these from a social perspective.

1.2 STATEMENT OF QUALIFICATIONS AND RELEVANT EXPERIENCE

6. This report has been prepared by Hilary Konigkramer, a certified SIA Specialist and Principal of WSP New Zealand Limited. Wendy Turvey, an experienced SIA practitioner and National Manager of WSP Research operations, has provided technical review and advisory support throughout the assessment. Their qualifications and relevant experience are outlined in **Appendix A** along with confirmation that this report has been prepared in accordance with the Environment Court's Code of Conduct for Expert Witnesses.

2 PROPOSAL DESCRIPTION

2.1 AUCKLAND PRISON SITE CONTEXT

7. Auckland Prison is located at 530 Pāremoremo Road, Pāremoremo, Auckland. The Site and surrounding land use is zoned Rural-Countryside Living Zone under the Auckland Unitary Plan. The 80-hectare Site is owned by the Crown and is gazetted for prison purposes. The entire Site is designated for 'Auckland Prison' (Auckland Unitary Plan reference 3900) with the Minister of Corrections as the requiring authority. Condition 1(a) of the current designation states that the maximum capacity of the prisoners to be accommodated within the Auckland Prison is 681.
8. The Site contains a maximum-security facility, capable of accommodating up to 260 maximum security prisoners, and a number of other existing facilities for low to high security prisoners.
9. The current designated Site includes the Prison Village on the opposite side of Pāremoremo Road to the prison, as well as a building at 505 Pāremoremo Road (**Figure 1**).

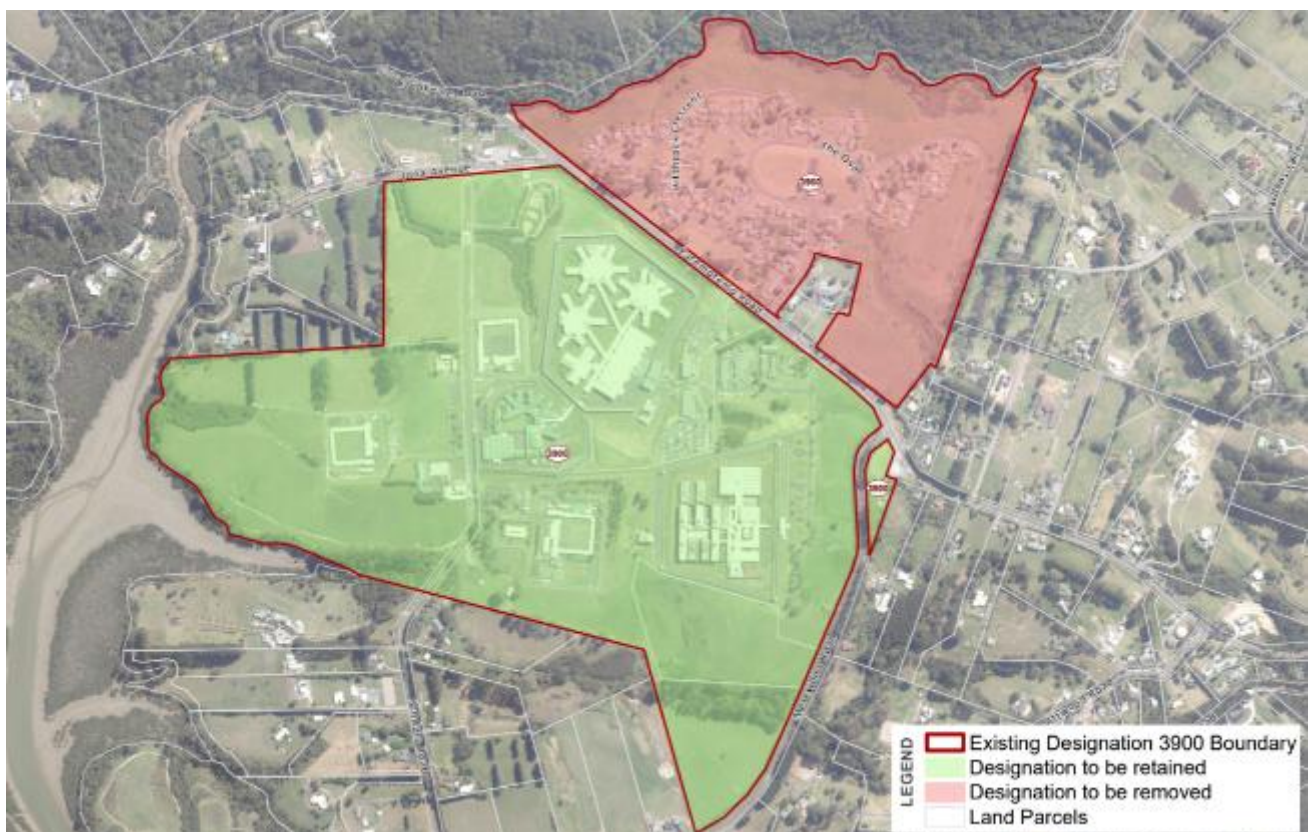


Figure 1: Existing Auckland Prison Designation and Proposed Amendments (Boffa Miskell, 2025)

2.2 THE PROPOSAL

10. Corrections proposes to alter the designation at Auckland Prison, Pāremoremo, to enable capacity to be increased from the current designation limit of 681 to 1,220 prisoners. This increase in capacity will enable new facilities for 960 low to high security prisoners to be built, which will operate alongside the existing maximum security facility (which can accommodate 260 prisoners).
11. The proposed alteration to the designation seeks to remove the Prison Village from the designation, while retaining it over the building at 505 Pāremoremo Road (**Figure 1**).
12. The new facilities may be built in stages, over approximately 10 years, to respond to predicted growth in the prisoner population in the region. The new facilities will ultimately replace some or all of the existing facilities at the Site, apart from the maximum security facility.

2.3 PARAMETERS APPROACH

13. Because the purpose of the designation alteration is to future proof the prison network, there is no design information currently available. A set of development parameters have been developed to provide maximum flexibility and as much certainty as practicable, to provide the basis for the assessment of the effects on the environment.
14. The parameters provide for the maximum anticipated “envelope” of built form and operational characteristics (i.e. prescribed maximum limits), that form the proposal. The parameters have been tested against existing physical configurations of prisons and operational characteristics elsewhere in New Zealand’s prison network, to ensure there are sufficient opportunities for flexibility for future design, operational efficiencies and innovation.
15. This parameters-based approach is consistent with the intent of designations under the Resource Management Act 1991 (RMA), which allows for planning future public works in the absence of detailed design. It provides more certainty than the current Designation 3900, which simply identifies the land for prison use, with very few conditions applying. Similar approaches have been adopted in previous projects, including the Auckland South Corrections Facility (via Board of Inquiry) and Waikeria Prison (via direct referral to the Environment Court), where design detail followed designation approval.

3 METHODOLOGY

3.1 ASSESSMENT FRAMEWORK

16. The methodology used for this SIA is based on an internationally recognised approach provided by the International Association for Impact Assessment (IAIA) in the SIA Guidance Document¹. This guidance document provides the following definition of SIA:

Social Impact Assessment includes the process of analysing, monitoring and managing the intended and unintended social consequences, both positive and negative, of planned interventions (policies, programs, plans, projects) and any social change processes involved by those interventions. Its primary purpose is to bring about more sustainable and equitable biophysical and human environment.

17. The use of SIA to analyse, monitor and manage the social consequences of development provides a valuable tool to support decision making.
18. The IAIA SIA framework is well recognised in New Zealand and internationally, and it provides a sound and robust framework for the identification and assessment of social effects.
-

3.2 METHODOLOGY

19. The focus of the SIA was on the implications of the proposal beyond the Site i.e. on the community and has therefore not assessed aspects relating to the operation of the prison (prisoners, service providers etc).
20. The SIA was undertaken in two stages, namely (i) scoping, and (ii) impact assessment. The process of considering the issues and identifying and assessing impacts was an iterative one, with continued review and revision as preliminary understandings were validated and as mitigations were identified by the project team in response to key issues raised during community consultation.

3.2.1 SCOPING STAGE

21. The objective of the scoping stage was to clearly understand the proposal and the receiving environment to allow for the preliminary identification of social impacts. The following activities were undertaken during scoping:
- 1) Review of relevant documents and various briefing sessions to gain an understanding of the scope of the proposal.
 - 2) High level literature review of SIA studies undertaken for similar projects to support the identification of preliminary impacts (**Appendix B**).
 - 3) Collection and analysis of baseline data, primarily from Statistics NZ, to support the development of a social baseline of the study area (**Appendix C**).

¹ Social Impact Assessment: Guidance for assessing and managing the social impact of projects (IAIA, 2015)

- 4) A site visit on 11 June 2025 to gain a better understanding of the proposal, and the local context in which the existing prison is located. This supported the identification of potential impacts, and the definition of the SIA study area.
 - 5) Definition of the SIA study area and preliminary identification of the stakeholder groups likely to be affected by the proposal.
 - 6) Preliminary identification of potential social impacts, and early consideration of the data requirements to support the assessment of the likely social impacts.
22. The outcomes of the scoping stage were confirmation of the study area for the SIA, a preliminary identification of social impacts, stakeholder groups affected, and data requirements to support the impact assessment.

IMPACT IDENTIFICATION

23. The process of identifying social impacts is an iterative one. The scoping stage included the preliminary identification of social impact associated with the proposal. As the SIA progressed from scoping into the assessment phase, the understanding of the potential social impacts was refined.
24. Social impacts were identified using the framework provided by the IAIA. The IAIA SIA Guidance document explains social impacts as changes to one or more of the following:
 - **Way of life:** how people live, work, play and interact with one another on a daily basis
 - **Culture:** shared beliefs, customs, values and language
 - **Community:** cohesion, stability, character, services and facilities
 - **Political systems:** extent to which people are able to participate in decisions that affect their lives, level of democracy, and resources provided for this purpose
 - **Environment:** the quality of the air and water people use, the availability and quality of the food they eat, the level of hazard or risk, dust and noise they are exposed, the adequacy of sanitation, physical safety, and access to / control over resources
 - **Health and wellbeing:** physical, mental, social and spiritual wellbeing
 - **Personal and property rights:** whether people are economically affected, or personally disadvantaged including violation of civil rights
 - **Fears and aspirations:** perceptions of safety, fears about the future of their community, aspirations for the future and future of their children
25. Not all the categories are relevant to all projects. When considering the applicability of the IAIA framework to the proposal, the following were identified as not relevant to the proposal for the following reasons stated below:
 - Culture – Māori cultural matters are excluded from the scope of this SIA as these will be addressed in the Iwi and Māori Consultation Summary Report, prepared by Whetu Consulting, and supporting Cultural Impact Assessment/s prepared by the relevant iwi.
 - Political systems – in the New Zealand context, the wider political system and ability to participate democratically in society is not a key concern.
 - Personal and property rights – civil and property rights are not affected by the proposal, and the potential impact on property values is excluded from the assessment. While it is acknowledged that the impact on property values may be a concern of the community, the clear case law guidance on the RMA that this is not a factor that can be taken into account in the assessment of the application, and it has been excluded from this assessment on that basis.

3.2.2 IMPACT ASSESSMENT STAGE

26. The objective of the impact assessment stage was to evaluate the potential social impacts of the proposal and, where relevant, identify mitigation and management measures. The following activities were undertaken:
 - 1) Data collection (consultation) and analysis to support the assessment of impacts
 - 2) Review of key themes and outcomes of the Corrections-led consultation process
 - 3) Review of relevant specialist studies
 - 4) Description and evaluation of potential social impacts
 - 5) Identification of mitigation and management measures
27. The impact assessment stage culminated in the preparation of the SIA report documenting the findings of the assessment and recommendations in respect of proposed designation conditions.

DATA COLLECTION

28. The primary objective of the bespoke SIA-led consultation undertaken was to gather primary data to confirm assumptions made in the scoping phase and to provide data to support the assessment of potential social impacts.
29. Two consultation methods were employed during August and October 2025 to support the data requirements for the SIA:

Online Residents Questionnaire

30. An online questionnaire targeting residents that live in close proximity to the prison (within the local study area identified in Section 5.3 below) was undertaken in September 2025. The questionnaire sought a representative sample of the views of residents likely to most affected by the proposal. Residents participating in the questionnaire were asked to rate their level of agreement with statements and to indicate the level of impact that the current operations have, and proposed increase in capacity of the prison may have, on them and their household (**Appendix D**).
31. Residents were notified of the questionnaire via a letter-drop to properties within the local study area. The letter explained the purpose and approach to the questionnaire and provided instructions on how to access it (i.e. QR code and online link). One person from each household was asked to complete the questionnaire ensuring that every household was provided with an equal say and that results were fair and balanced.

Key Informant Interviews

32. Key informant interviews were held with selected parties that represented key stakeholder groups (**Table 3.1**). The purpose of the interviews was to obtain insights into the local community, the relationship between the community and the prison, and to obtain an improved understanding of the likely implications of the proposal on the local community. Questions were designed to be semi-structured, to ensure a focus on the study whilst ensuring all relevant matters were raised and explored.
33. The SIA-led consultation provided an opportunity to obtain an improved understanding of the interests and perspectives of stakeholders in relation to the proposal and so provided valuable data to inform the assessment of potential social impacts. A summary of the SIA consultation outcomes is provided in **Appendix D**.

Table 3.1: Key Informant Representatives Interviewed

Stakeholder Group	Representatives Interviewed
Community Groups	<ul style="list-style-type: none"> – Pāremoremo Ratepayers and Residents' Association (PRRA) [Andy Riley, Chairperson] – Sustainable Pāremoremo [Russell Hughes] – Community representative [Phoebe Balle]
Local Board	<ul style="list-style-type: none"> – Upper Harbour Local Board (UHLB) [Anna Atkinson, Chairperson]
Community Facilities and Services	<ul style="list-style-type: none"> – Ridgeview School [Cassey Prentice, Principal] – NZ Police (District Commissioner and Area Commander) [Naila Hassan and Tim Williams]
Housing / Accommodation	<ul style="list-style-type: none"> – Local estate agents (x2) *
Corrections	<ul style="list-style-type: none"> – General Managers: – Stephen Parr (Auckland Prison) – Simon Chaplin (Community Partnerships and Pathways) – Karla Wieblitz (Pae Ora)

*Names of the local estate agents have not been included as they were engaged on the understanding that their feedback would be reported on in a non-attributable manner

REVIEW OF CORRECTIONS-LED CONSULTATION OUTCOMES

34. The consultation process, led by Corrections, commenced in July 2025 and is still ongoing as at the date of this report. This process has included information sharing (letter drops, information pack, website, etc), and a drop-in session held at Pāremoremo Village Cultural Centre, follow up one to one meetings with interested residents, one to one meetings with residents in relation to their properties, and meetings with community groups. The consultation also undertook analysis of a parallel survey conducted by the PRRA and provided both the PRRA presentation and their analysis.
35. The data gathered from the proposal-led consultation was accessed via the proposal's stakeholder management system, giving access to meeting minutes.
36. The outcomes of the Corrections-led consultation were reviewed and contributed to an understanding of the issues and concerns of the local community and key stakeholders in relation to the proposal.

REVIEW OF SPECIALIST STUDIES

37. A range of specialist studies were undertaken to inform the Substantive Application Report. The following were identified to be of relevance to the SIA and the final draft reports reviewed with a "social lens" to inform the assessment of the social impacts of the Auckland Prison Capacity Increase:
 - Assessment of Economic Effects (Market Economics, 2025)
 - Assessment of Noise Effects (Styles Group, 2025)
 - Assessment of External Lighting Effects (Kern Consultants Limited, 2025)
 - Assessment of Landscape, Natural Character and Visual Effects (Boffa Miskell, 2025)
 - Integrated Transportation Assessment (Don McKenzie Consulting, 2025)

IMPACT ASSESSMENT

38. To evaluate the potential social impacts associated with the proposal, impacts have been described and assessed according to the following:
- 1) The cause of the impact.
 - 2) The stakeholder / stakeholder group to be impacted and any potential vulnerable groups, directly affected, and or indirectly affect people, and their ability to adapt to change.
 - 3) Whether the impact is positive or negative.
 - 4) The consequence of the impact, which is determined through consideration of the following:
 - Extent of the impact – whether the impact is limited to the Site and surrounds, local area, region or whether it is likely to be experienced at national level.
 - Duration of the impact – whether the impact will be temporary (0-1 year), short term (1-5 years), medium term (5-15 years) or permanent (>15 years).
 - Magnitude of the impact – whether the impact will be on the wider community (many affected), the local community (moderate number) or directly affected owners, occupiers and users of properties (few affected).
 - 5) The likelihood of the impact i.e. an estimation of the probability of the impact occurring, ranging from rare to almost certain.
39. The IAIA recommended risk assessment methodology, which considers the likelihood and consequence of an impact, was used to determine the overall significance of the impact (**Figure 2**).

Significance Rating (Likelihood / Consequence)

		Consequence Level				
		1	2	3	4	5
Likelihood Level	Descriptor	Insignificant	Minor	Moderate	Major	Catastrophic
A	Almost certain	A1	A2	A3	A4	A5
B	Likely	B1	B2	B3	B4	B5
C	Possible	C1	C2	C3	C4	C5
D	Unlikely	D1	D2	D3	D4	D5
E	Rare	E1	E2	E3	E4	E5

Risk Rating	Low	Moderate	High	Extreme
-------------	-----	----------	------	---------

Figure 2: Risk Assessment Framework (IAIA SIA Guidance Document, 2015)

MITIGATION AND MANAGEMENT MEASURES

40. Where required, appropriate mitigation, avoidance and remedial strategies were identified for potential negative impacts. In addition, where appropriate, enhancement measures were identified to maximise potential positive impacts.

RECOMMENDED DESIGNATION CONDITIONS

41. As part of the application, recommended designation conditions have been developed by the project team to ensure that:
 - (a) the development parameters are reflected in the designation purpose and conditions; and
 - (b) the adverse environmental effects from the proposal to increase capacity are avoided, remedied or mitigated.
 42. The social impact specialists provided input into the development of the draft conditions, based on an understanding of the social effects and outcomes of the assessment undertaken.
-

3.3 ASSUMPTIONS AND EXCLUSIONS

43. The following assumptions and exclusions apply to the scope of the SIA:
 - The SIA provides an assessment of the potential social impacts of the proposal beyond the Site, with a focus on the community impacts. The scope has therefore excluded the identification and assessment of impacts relating to the internal prison operations (current and potential future) such as impacts on prisoners, staff, contractors and service providers. It has been assumed that Corrections will ensure that operations can be adequately scaled up to support an increase in prisoner numbers. In addition, operational considerations are heavily reliant on infrastructure design and operating models which do not currently exist. Corrections are consulting with relevant service providers to understand the impact on them as part of the Correction-led consultation. It is assumed that the prison is unlikely to be operating at a maximum capacity of 1220 prisoners for several years, and as a result Corrections, staff and service providers have several years lead in time to scale up or adapt their service offering in response to the proposed increase in prison capacity.
 - The assessment is based on the proposal information made available up to December 2025.
 - Cultural impacts are not addressed in this SIA. An Iwi and Māori Consultation Summary Report, being prepared by Whetu Consulting Ltd, and supporting Cultural Impact Assessment/s are being prepared independently of the SIA and have not been reviewed as part of this assessment.
 - Technical assessments have separately considered a range of specialist areas that are affected or require consideration in the context of this proposal. These assessments have been carried out by the relevant technical specialist and their findings relied upon. Technical reports have been reviewed in this assessment from a social perspective only.

4 SOCIAL CONTEXT

44. The social context associated with the proposed capacity increase at Auckland Prison is shown in **Table 4.1**. There are several levels at which potential social impacts may be experienced. The SIA has focused primarily on the social impacts that are likely to be experienced within the local study area and the area of Pāremoremo, with reference to the wider community, regional and national context where relevant.

Table 4.1: Social Environment

Context	Description
Local Study Area	The local study area includes residents that are potentially directly affected by the proposal due to their proximity to the Auckland Prison (Figure 3). The area includes adjacent residents (including the Prison Village which is within the land currently designated for prison purposes), properties within 500m of the Auckland Prison designation, and additional properties identified by landscape and visual assessment from which development of the Prison Site (in the manner proposed) may be potentially visible.
Local Community	The local community refers to the suburb of Pāremoremo (Figure 4)
Wider Community	The wider community refers to the Upper Harbour Local Board (UHLB) area boundary which includes the communities of Whenuapai, Pāremoremo, Lucas Heights, Albany Heights, Oteha, Albany, Pinehill, Rosedale, Schnapper Rock, Unsworth Heights, Greenhithe, Hobsonville, and West Harbour (Figure 4).
Regional	The regional context for the proposal refers to the Auckland region.
National	New Zealand.

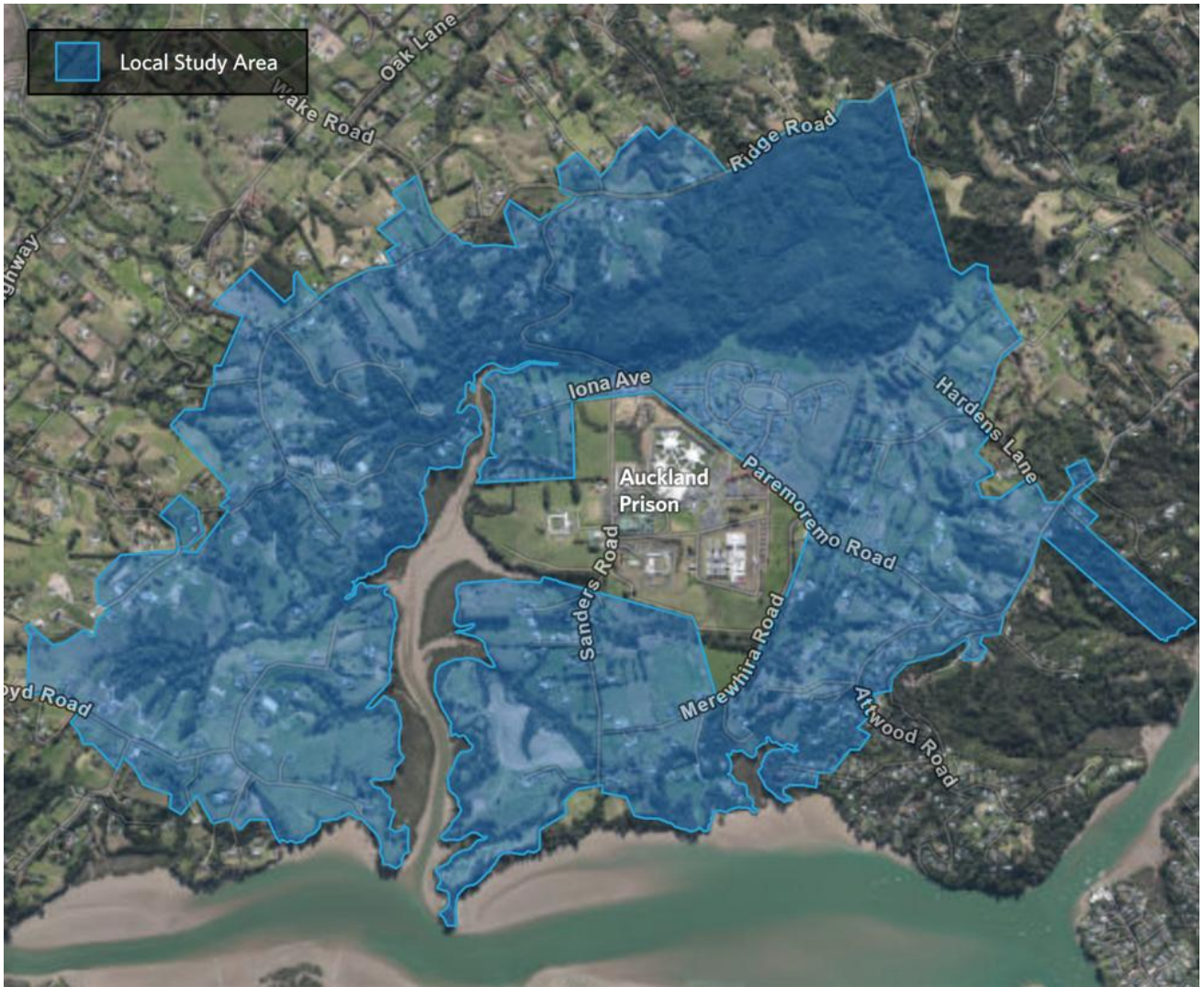


Figure 3: Local Study Area

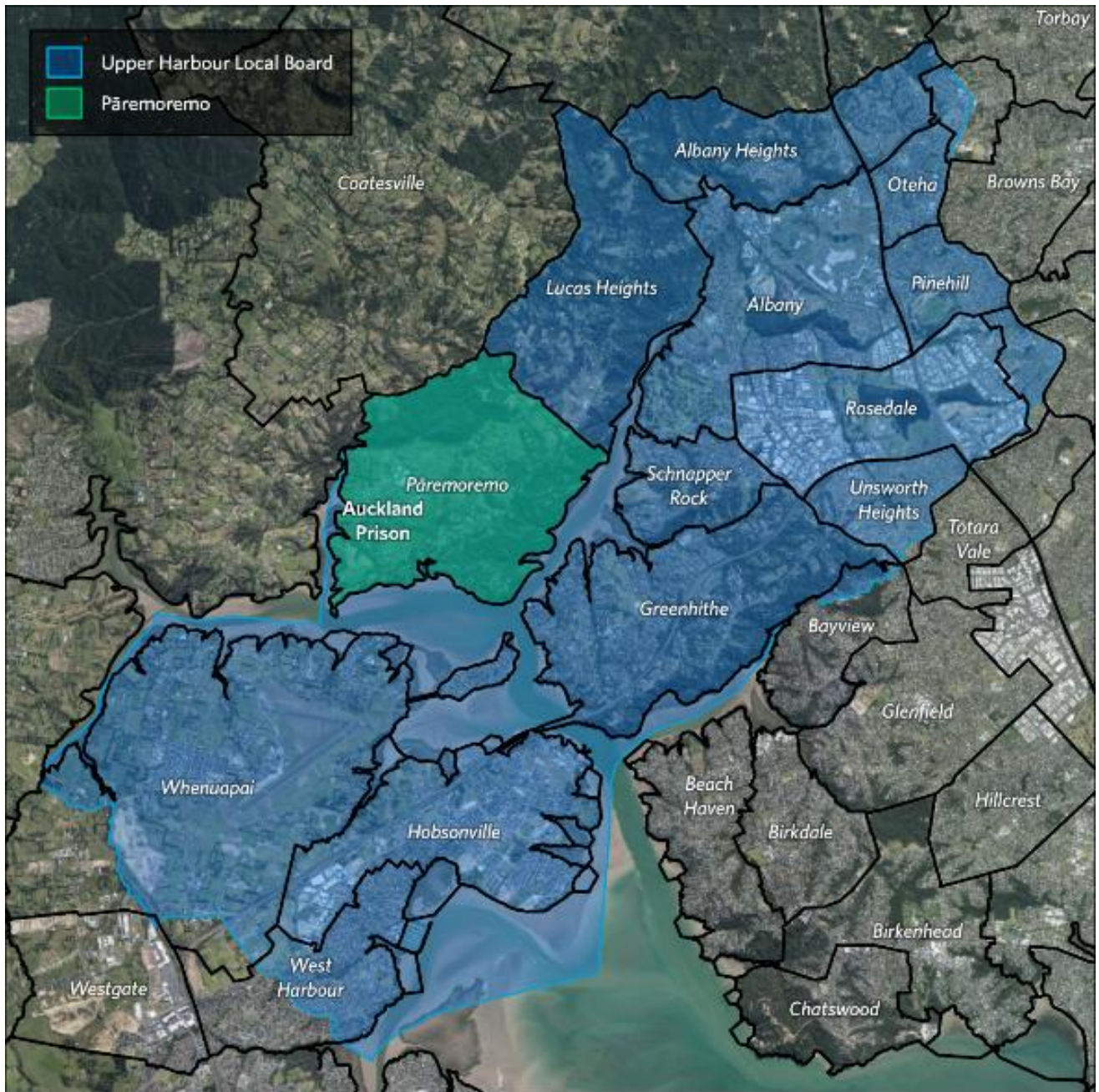


Figure 4: Local Community (Pāremoremo) and Wider Community (UHLB Area)

5 EXISTING SOCIAL ENVIRONMENT

45. Understanding the existing social context including social characteristics, values and priorities of the community is critical to identifying and assessing the potential social impacts of the proposal. This is referred to as the 'social baseline'. The baseline forms the basis from which potential impacts which may be reasonably perceived or experienced by different people within the area of social influence.
-

5.1 WIDER COMMUNITY

46. The wider community has been defined by the Upper Harbour Local Board (UHLB) boundary (**Figure 4**) which covers much of the North Shore and part of West Auckland and encompasses a mix of urban and semi-rural suburbs. These suburbs range from well-established areas to rapidly developing urban zones including Hobsonville Point and Albany. The suburbs of Pāremoremo and Lucas Heights, located in the northwest of the local board area, are rural residential in nature, zoned Rural-Countryside Living Zone.
47. The most significant business zone is in Albany, providing large-scale retail, commercial, and civic activities. Rosedale is a major employment hub, characterised by a range of commercial offices, light manufacturing and services industries.
48. **Appendix C** outlines key demographic statistics for the wider community, of relevance are the following trends:
 - The UHLB, with a 2023 population of 76,965, has experienced significant growth with a population increase of 22% between 2018 and 2023, and 43% over the past ten years. This is notably higher than the population growth for Auckland and New Zealand.
 - In 2023, people living in the wider community were predominantly of European ethnicity (45%). The Asian population in the area was substantially higher (41.5%) compared to the Auckland (27%) and national average (15%). In the UHLB area, Māori and Pacific Peoples represent 6% and 3% respectively, significantly lower than the Auckland (11% and 15%) and New Zealand (15% and 8%).
 - The New Zealand Index of Deprivation (NZDep) provides an area-based measure of socio-economic deprivation using a score of 1 to 10, where 10 presents the most deprived. In 2023, the mean deprivation index in the UHLB area was 3.5, which is noticeably lower than the shared score of 5.6 for both Auckland and New Zealand.
 - Professional and technical services, construction and retail trade are the top 3 industries in the wider community area, with the majority of the population (53%) in the occupation of either manager or professional. The population has higher education levels, and a higher mean income compared with Auckland and the national average.
 - Home ownership in the area is relatively high at 57%, compared to the Auckland average of 48%. The area's mean years of residence is 6.2 years which is indicative of a fairly stable community. The percentage of people who work from home is higher (22%) than the Auckland and national average (18%).

5.2 LOCAL COMMUNITY PROFILE

49. Pāremoremo is a rural residential area, located southwest of Albany. The Auckland Prison, New Zealand's primary maximum security prison, has been a part of the Pāremoremo community for close to 60 years, since opening in 1969. As part of the establishment of the prison, a village was built to house prison workers.
50. The nature and character of the Pāremoremo community have experienced changes over time. This section provides a description of the current community profile which has been informed by field observations and interviews with key community informants.
51. The residents of Pāremoremo value the balance of a rural lifestyle and proximity to urban amenities, with Albany a 15-minute drive away. Many of the residents highly value the local environment, including the reserves and green spaces such as Sanders Reserve and the Pāremoremo Scenic Reserve, and tend to be environmentally inclined.
52. The local community associated with the Auckland Prison consists of two distinct areas, namely (1) the rural lifestyle properties, and (2) the Prison Village.
 - **Lifestyle properties:** The majority of the lifestyle properties are owner-occupied. There are larger lifestyle blocks off Pāremoremo Road and Hardens Lane that have a rural outlook, and smaller sections including those on Attwood Road which enjoy harbour views. Rental properties are often minor or secondary dwellings on larger sections.
 - **Prison Village:** The Prison Village is quite distinct from the surrounding rural residential properties, offering affordable housing with a rural outlook. Historically, security checks and right-to-occupy tenancy agreements ensured a controlled environment. There is still a level of vetting undertaken (Ministry of Justice criminal record check), which provides the community with a sense of security that a good living environment will be maintained within the village. The tenancies are managed by Colliers on behalf of Corrections.
53. There are various groups and initiatives that foster participation and social cohesion in the local community. Community organisations, in particular Sustainable Pāremoremo, play an important role in community cohesion by bringing the community together to achieve improved environmental outcomes in the local area (such as pest and weed control).
54. The recent appointment of a Community Resilience Activator, funded through the UHLB, focuses on emergency resilience and preparedness and building social connection and trust. The 'activator' component of the role is having a positive impact of increasing community connection and building relationships through events and activities, in collaboration with the local Ridgeview School. Recent events have been well attended by both village and lifestyle local residents, and there appears to be a revitalisation of community consultation that is fostering a renewed sense of connection amongst residents.

5.3 LOCAL STUDY AREA

55. The local study area has been defined to include those residents that are most likely to be directly affected by the proposal due to their proximity to the Auckland Prison (**Figure 3**).

5.3.1 DEMOGRAPHICS

56. A review of the demographic profile of the local study area provides an understanding of the existing social environment. Baseline data collected (**Appendix C**) has been summarised below to provide some insights in the nature of the local study area:

- The Prison Village had a population of 282 people in 2023, reflecting a 10% decline in the past 10 years. The local area’s population has increased by 3% in the past 10 years from 848 people in 2013 to a population of 873 people in 2023.
- The Prison Village has a younger population compared with the local study area, with 50% of the population under 30 years old, and 5% of the population over 65 years. In comparison, 40% of the local study area is under 30 years old, and 10% over 65 years.
- In 2023, people living in the local study area were predominantly of European ethnicity (72%). The Prison Village has a higher concentration of Māori and Pacific Peoples (26%) compared with the local study area (15%).
- The mean income in the local study area is relatively high compared with the Prison Village (\$54,056 compared with \$46,159). The lower median income in the local area, compared with the Prison Village, is likely to be a result of the age profile of the population (i.e. the higher percentage of retired members of the community).
- The Prison Village has a significantly higher population with no qualification, and lower proportion of people that have gone on to study further after school compared with the local study area.
- Unemployment is low in the local study area (2%) with close to 70% of the labour force being employed either full or part-time. The status of the labour force in the Prison Village is very similar to that of the local study area.
- According to StatsNZ (2023), home ownership in the Prison Village is low at 3%, as the majority of residents are tenants. Corrections Land Management team have confirmed that the Auckland Prison Village is wholly owned by the Crown, with no privately owned properties located within the village. The local areas mean years of residence is 8.5 years, and within the Prison Village this is 6.6 years which reflects that on average residents have lived in the area for an extended period.
- The Prison Village received a deprivation score of 9 in 2023, compared with a local study area score of 4.4 and the Auckland and New Zealand average of 5.6 (NZDep 2023). The index combines census data relating to income, home ownership, employment, qualifications, family structure, housing, access to transport and communications to generate a score. Using the NZDep 2023 as an absolute measure of socio-economic health is cautioned against, however the high deprivation score assigned to the Prison Village is likely to be due to several factors including the low levels of home ownership, and lower mean income than the Auckland and New Zealand average, high percentage of the population with no qualification.

5.3.2 COMMUNITY INFRASTRUCTURE

57. An overview of the community facilities and infrastructure within the local study area is provided below with key community landmarks reflected on **Figure 5**:

- **Schools:** Ridgeview School is a relatively small school, with a school roll that fluctuates between 40 – 60 children, that caters for Year 0-6. The school is not zoned however caters for local families, with most of the children attending being residents of the Prison Village and the immediate area i.e. Pāremoremo Road. The school roll has declined over the last 5 to 10 years for two main reasons, (i) many of the local children from the surrounding lifestyle properties have aged and moved to higher education facilities, and (ii) local residents of lifestyle properties are selecting other schools outside of the immediate area to send their children to. The perception that the school is a private school and or associated with the prison has an impact on the school roll.

- **Recreational and Reserve Areas:** there are two reserves, Sanders Reserve and the Pāremoremo Scenic Reserve, within the local study area. These are highly valued green spaces and well utilised by the local community. Within the Prison Village there is 'The Oval' which provides a recreational space primarily for village residents.
- **Community Facilities:** There are two Corrections-owned community venues, the Cultural Centre at the Oval within the Prison Village, and the Pāremoremo Community Hall located at 505 Pāremoremo Road. Use of the Pāremoremo Community Hall by the community is currently limited. Sanders House, located at Sanders Reserve is a relatively small venue (20-30 people) which is used by Sustainable Pāremoremo for meetings and events, and has been identified as a community emergency response hub.



Figure 5: Local Study Area – Community Facilities

6 ASSESSMENT

58. The potential social impacts associated with the proposed Auckland Prison capacity increase that have been identified are described and assessed in this section. The IAIA recommended risk assessment methodology has been used to identify the overall significance of the impacts. A detailed assessment matrix is included in **Appendix E**.
-

6.1 WAY OF LIFE

6.1.1 REDUCED ACCESSIBILITY

59. The construction and operation of the proposal will result in increased traffic movements on the primary access routes to and from the Auckland Prison:
- Pāremoremo Road with onward connectivity to Dairy Flat Highway, Albany Highway and SH1; and
 - Brookdale Road and Ridge Road with connection to the Coatesville Riverhead Highway
60. The Avenue / Dairy Flat intersection is currently operating at capacity (Don McKenzie Consulting, 2025) and, based on consultation outcomes and SIA data collection, it appears that congestion and wait times at this intersection during peak periods has been a long-term concern of residents of the local study area and the local community travelling from Pāremoremo to Albany and beyond for work and personal requirements. During the SIA consultation, traffic movements and travel times was identified by more than half of the questionnaire response (53%) as being the most significant negative impact associated with the current prison operations.
61. According to the Integrated Transportation Assessment (ITA) (Don McKenzie Consulting, 2025), during the construction phase it is expected that a range of traffic movements will be associated with the establishment of the new facilities, and these will be generally catered for by the current roading infrastructure to the west and east of the Site. During operation of the prison at an increased capacity, there will be increased traffic movements associated with an increase in staff, service provider and visitor movements to and from the prison. The ITA, 2025 states that the overall traffic generation effect of the proposal ranges from approximately 33 additional vehicles per hour in the afternoon peak at The Avenue / Dairy Flat Highway intersection to 100 additional vehicles per hour during the morning peak.
62. Traffic movements, congestion and travel times were raised as key concerns during the SIA consultation. In respect of the construction phase, 64% of questionnaire respondents indicated that traffic and travel times would have a negative impact on them. Increased traffic from heavy construction vehicles and the likelihood of construction phase traffic causing existing congestion issues to worsen were the key reasons for identifying this as a significant concern. The majority (66%) of respondents indicated that the future prison operations would have a negative impact on traffic volumes and travel times.
63. The adequacy of the existing road infrastructure to support the expansion of the prison was consistently raised as one of the primary concerns of the local community during key informant interviews with community representatives. Reference was made to the current and future land use developments in the wider area that are forecasted to contribute to a significant growth in traffic in the future, particularly though The Avenue / Dairy Flat Highway intersection. Ridgeview School identified construction and operational phase traffic as a concern, however noted that as there are no current impacts on the school there was some confidence that these effects could be managed in the future.

Impact Statement

64. Increased traffic volumes during the construction and operational phase have the potential to cause delays, congestion and reduced accessibility for residents living in the local study area and the local and wider community that use The Avenue / Dairy Flat Highway intersection. From a social perspective, an increase in traffic volume and congestion of the road network has the potential to impact on individuals' daily movement and behaviours.
65. During construction, the duration of the impact will be primarily temporary (0-1 year) but may extend to being short term (1-5 years) in nature, and the magnitude of the effect is considered moderate given the effects are likely to be primarily within the local study area and within the local community. Without mitigation, the impact is evaluated as likely and therefore considered of high significance. With the implementation of the identified mitigation the magnitude and likelihood of the impact would reduce resulting in an overall assessment of **moderate significance**.
66. During operation of the prison at an increased capacity, the extent of the impact would be local (i.e. local and wider community, but unlikely to extend to a regional level), the duration of the impact will be permanent (>15 years), and the magnitude of the impact is that the wider community would be affected (many affected). The likelihood of the impact is very much dependent on the mitigation identified being implemented, the most important being the signalisation of The Avenue / Dairy Flat intersection. Without this mitigation, the impact is considered very high (extreme). The signalisation of the intersection will significantly reduce the magnitude, consequence and likelihood of the impact, resulting in an overall assessment of **low significance**.

Mitigation

67. The mitigation identified in the ITA (2025) is supported, in particular:
 - The implementation of a Construction Traffic Management Plan to ensure construction related traffic impacts are well managed, noting that this plan can be revised to respond to community concerns if necessary.
 - The signalisation of The Avenue / Dairy Flat intersection to support the increased prisoner capacity in the operational phase.
68. To address the social effects identified, the following additional mitigation is required:
 - Provision of construction phase traffic related information to residents in the local study area and members of the local community including what construction activities are proposed to take place and the likely implications.
 - Provision of a mechanism for complaints registration and feedback during both the construction and operational phase.

6.1.2 REDUCED ROAD SAFETY

69. There is a potential for reduced safety for road users due to increased traffic, including heavy construction vehicles. The ITA (2025) included consideration of road safety issues. The study reported the absence of any road accidents at the Auckland Prison access and stated that there are no existing safety concerns that would raise concern in the context of the potential increased capacity at the prison. The ITA notes that from Hobson Road intersection west along Pāremoremo Road, there are no formalised pedestrian or cycle facilities.
70. Road safety is a significant concern within the local community. More than half (52%) of respondents to the SIA questionnaire rated road safety as a negative impact of the current prison operations. Concerns included speeding and the associated unsafe conditions for pedestrians walking along Ridge Road and Pāremoremo Road, and damage to the roads from frequent heavy truck movements. Road safety was reiterated as a concern with 52% of respondents concerned about

construction phase related safety. In respect of the future operation of the prison, road safety was rated as the highest concern with 76% of respondents stating they expected the impact to be negative.

71. Road safety was not identified as a concern by all community representatives that were interviewed. The school raised concern relating to road safety for approximately 20 older children that catch the bus. The bus stop is near Ridgeview School, and the concern is that there is no safe passage from this bus stop, across Pāremoremo Road and into the community. This concern was echoed by one other community representative that noted there was a footpath on only one side of the road, no pedestrian crossing and therefore a need to create safer routes particularly for pedestrian commuters.
72. During the Corrections-led consultation process, road safety concerns associated with Ridgeview School, the Prison Village and the entrance to the Prison were raised, as well as the lack of public transport and active mode infrastructure was noted. These have been the topic of recent discussion between Corrections and Auckland Transport. The need to manage construction traffic during school pick up and drop of times was also noted.
73. In respect of traffic calming measures along Pāremoremo Road, Auckland Transport has indicated the intention to:
 - Install ‘driver feedback signage’ at Pāremoremo Road near Ridgeview School before the end of 2025;
 - Implement a “school zone’ within the vicinity of Ridgeview School which typically involves variable speed limits of 30 km/hr; and
 - Investigate a “pedestrian refuge” at Pāremoremo Road for safer crossing.
74. In addition, Auckland Transport has added the Pāremoremo Road pedestrian crossing to their long list of projects.

Impact Statement

75. There is the potential for reduced road safety during the construction and operational phase of the proposal. The most significant risk is to pedestrians, and in particular school children, in the immediate vicinity of the prison who may be unable to cross Pāremoremo Road safely due to heavy vehicles, traffic volume and speed. The extent of the impact is therefore considered to be local, and to some extent limited to the Site and surrounds, as such the magnitude is low (few affected). The duration of impact will be temporary to short term during the construction period and permanent during the operational phase. The consequence of the impact is minor in the construction phase (due to relatively short duration) and moderate in the operational phase, with the likelihood of the impact occurring considered to be possible. This assessment results in a significance rating of moderate for construction phase and high for the operational phase. The mitigation proposed will reduce the likelihood of road safety incidents resulting in an overall significance rating of **low significance** for both the construction and operational phase.

Mitigation

76. The mitigation identified in the ITA (2025) is supported, in particular:
 - Corrections to continue to engage with Auckland Transport regarding the traffic calming measures required to facilitate safer pedestrian movement on Pāremoremo Road, in the vicinity of the Ridgeview School prior to the commencement of construction of the proposal.
 - The ITA’s recommendation that a Construction Traffic Management Plan be implemented to ensure construction related traffic impacts are well managed, noting that this plan can be revised to respond to community concerns if necessary.

77. To address the social effects identified, the following additional mitigation is required:
- Provision of construction phase traffic related information to residents in the local study area and Ridgeview School including what construction activities are proposed to take place and likely implications.
 - Provision of a mechanism for complaints registration and feedback during the construction phase.

6.1.3 REDUCED COMMUNITY SAFETY AND SECURITY

78. The impact being assessed is whether there is the potential for reduced community safety and security during the construction and operational phase of the proposal due to an increased risk of escapes and increased numbers of visitors during the operational phase.
79. The Auckland Prison has a very low number of escapes, with only two breakout escapes² recorded from the facility over the past 25 years. The prison has procedures in place for escapes which involves notifying police immediately, and alerting neighbours.
80. Prison visitor data provided by Corrections is presented in **Table 6.1**. On review of the visitor numbers for the past two years, the average number of visitors per month was 173 and 106 for the period 2023-2024 and 2024-2025 respectively. The highest number of visitors was recorded in the 2020-2021 period at 5,729 which is an average of 477 visitors per month. The increased the provision of Audio-Visual Links at the prison, and the resultant improved online connectivity, may account for the reduced number of physical visits in recent years. The ITA (2025) estimates that when the prison is operating at a maximum capacity of 1,220 prisoners, there could be approximately 100-120 visitors on-site at any one time.

Table 6.1: Auckland Prison Visitor Data (Corrections, 2025)

Year	July 2020 – June 2021	July 2021 – June 2022	July 2022 – June 2023	July 2023 – June 2024	July 2024 – June 2025
Booked Visit	9,920	1,607	328	4,745	8,672
Attended Visit	5,729	537	234	2,075	1,275

81. The majority of residents participating in the SIA questionnaire stated they feel safe and secure living in the neighbourhood (80% agreement). Safety and security was the highest positive impact identified by respondents with 24% rating this as positive, 33% no impact, and 43% indicating a negative effect of current prison operations. Some respondents identified that they feel unsafe during visiting days as the presence of patched gang members is intimidating. A respondent from the Prison Village mentioned that gang members sometimes congregate in the village, doing burnouts on their motorcycles or sitting at the bus stop drinking and littering. Respondents provided several comments about antisocial behaviour, potentially by visitors to the prison such as theft from mailboxes and damage to property. During the construction phase, 61% of questionnaire respondents anticipate a negative impact on their safety and security. When asked about the implications of the prison operating at an increased capacity, there was a mixed response to the impact of safety and security with 18% anticipating a positive impact, 28% a negative impact and the remaining 53% stating no impact expected. An increased number of visitors resulting in an increase

² A 'breakout escape' is when a prisoner has left the area contained by the outermost security fence, or, if there is no such fence, from the prison building.

in antisocial behaviour was noted as a potential impact of the prison expansion by several respondents.

82. Several interviewees noted that Pāremoremo is considered a safe area due to the presence of the prison. It was noted by several interviewees that there was a communication system in the past for Corrections to notify residents in the event of an incident, however there is no effective system in place currently. Concern regarding an increase in movement of people in and out of the area (visitors) was raised by one community representative interviewed. Another referred to the need to maintain the current levels of community safety of the area, noting that the prison does not significantly affect the daily life of most residents apart from the occasional negative incident involving visitors loitering and littering in Iona Avenue. The NZ Police confirmed that complaints involving prison visitors are rare but noted that increased visitor numbers may result in increased police involvement. A close working relationship exists between Corrections and NZ Police, characterised by good communication and collaboration. Corrections have acknowledged that historically there was a good community notification system, and an improved system is included as part of the proposed conditions of designation.
83. From the community feedback received, Iona Avenue residents have experienced issues with visitors loitering and littering in the past. Concerns were raised during the Corrections-led consultation process that the proposed new entrance in Iona Avenue would be the primary access for staff and visitors to the prison. In response to these concerns, Corrections have decided that the proposed new entrance will be on Pāremoremo Road and will close Iona Avenue access (i.e. it will not be used for operational prison traffic).

Impact Statement

84. There is the potential for reduced safety and security during the construction phase due to increased outside access to the prison by a variety of contractors. The existing security and access control measures at Auckland Prison will be enforced during the construction phase, ensuring community safety and security is maintained. For this reason, this impact is considered negligible.
85. The operation of the prison at an increased capacity has the potential to result in increased security incidents due to an increase in the number of prisoners and the number of prison visitors into the local area. The proposal is to develop modern prison facilities that incorporates advanced security features. During the operational phase, preventative measures such as existing security, technology and training as well as emergency management and response procedures reduce the potential impact of reduced community safety and security. Given the very low escape rate and mitigation in place to support prisoner containment, the potential impact of escapes on the local community is considered negligible.
86. Prison visitors pose the greatest impact on safety and security within the local study area. The community is concerned about this and there have been isolated incidents in the past associated with visitors loitering, littering and behaving in an undesirable manner. The duration of the impact would be permanent (>15 years) and the extent of the impact is likely to be limited to the area surrounding the prison, as such the magnitude of the impact is considered low (few affected). The consequence of the impact is rated as low, and the likelihood possible, resulting in an assessment of moderate significance. Community reporting of incidents or concerns relating to prison visitors to the NZ Police and Corrections is essential. This allows there to be a response to specific incidents and provides valuable data to identify trends and the need for additional action to be taken (i.e. Police presence on days when high prison visitor numbers are expected). This mitigation will reduce the likelihood of reduced community safety and security to unlikely resulting in a rating of **low significance**.

Mitigation

87. Mitigation that is part of the design and operation of the proposal:
 - Building of modern prison facilities (and replacement of older facilities).
 - Closing Iona Ave entrance, and location of the proposed new entrance on Pāremoremo Road.
 - Prison emergency management planning and preparation.
 - Prison security and technology, training and incident response procedures.
88. Mitigation identified to mitigation social impacts:
 - Maintain a community notification system.
 - Provision of a mechanism for complaints registration and feedback during both the construction and operational phase.
 - Community reporting of prison visitors related incidents, and increased police response as required.

6.2 COMMUNITY

6.2.1 SOCIAL UPLIFTMENT

89. In the context of this SIA, social upliftment refers to the enhancement in socio-economic wellbeing. It reflects a collective improvement in social conditions and quality of life as a result of reduced unemployment, increased business activity and local economic growth within an area.
90. Both the construction and operation of the Auckland Prison at an increased capacity have the potential to generate employment opportunities and economic benefits from increased business activity. These social-economic improvements will result in social upliftment as a result of improved quality of life and reduced unemployment at a wider community and regional scale (Auckland).
91. Based on the 2023 census data, the unemployment rate in the UHLB area and Auckland was 2.4% and 3.3% respectively. Unemployment rates have increased significantly since 2023, with an increase of 1.5% annually in Auckland, resulting in a most recent rate of 6.1% being reported for the June 2025 quarter (StatsNZ).
92. Currently approximately 580 staff are employed at Auckland Prison, the majority of the roles of which are permanent and full-time. A large proportion (65%) of the prison workforce are custodial staff³ with the remaining being non-custodial staff⁴. Corrections anticipate that staff numbers may increase by an estimated 50% to support the increase in capacity to 1,220 prisoners, with the majority of the additional staffing requirements being custodial roles.
93. When asked to rate the level of impact of the current prison on their lives, those residents responding to the SIA questionnaire rated economic benefits as one of the highest positive impacts (19%), with most respondents indicating no impact (77%) and 4% rating this as a negative impact. During the construction and operation of the proposal, most questionnaire respondents (70% and 62% respectively) anticipated a negative impact on themselves or their family in respect of economic

³ Custodial staff are responsible for the direct supervision, containment and safety of prisons (for example, Corrections Officers, Security Managers etc).

⁴ Non-custodial staff work within prisons and focus on rehabilitation, health, education and reintegration (for example, Case Managers, Programme Facilitators, Health Professionals, Administrative Staff etc.)

benefits. When asked whether '*an increase in the prison capacity will create economic benefits*' 26% agreed, 26% neither disagreed or agreed, and 49% disagreed with this statement.

94. Economic benefits were not raised as either a current or potential impact of the prison during key informant interviews. One community representative was asked whether the prison contributed to the local economy (local businesses and employment), and they responded saying they had no knowledge of whether services or jobs were sourced locally or through regional contracts.
95. Whilst the local community have not recognised the proposal benefits in the feedback they have provided, the increased capacity at Auckland Prison will have a positive effect on employment and the economy during the construction and operational phases:
 - The construction of the proposal is expected to be serviced by Auckland contractors which will sustain existing employment within the regional construction sector, with the possibility of additional roles being created. According to the Market Economics (2025) the scale of investment during the construction phase is significant. It is expected to generate approximately \$1 billion in value added (based on present value and 2024 prices), sustaining employment equivalent to around 14,000 job years, primarily in Auckland.
 - During the operational phase, a significant number of employment opportunities will be created (estimated 290 roles), most of which will be custodial roles, with the majority if not all these roles likely to be sourced from the Auckland region. The prison operating at a higher capacity will generate sustained economic effects. The potential value added associated with the project operational expenditure is \$95 million, and 2,800 job years (Market Economics, 2025).
 - The operation of the prison operating at an increased capacity will require an expansion of services by a range of providers which has the potential to result in further employment and will result in the generation of additional revenue in the economy. There are likely to be a host of secondary employment and downstream economic benefits in the service economy and sectors that support the prisons' operations (Market Economics, 2025).
96. According to the Economic Assessment (Market Economics, 2025) the proposal is expected to deliver significant benefits at both regional and national levels.

Impact Statement

97. The construction and operational phase of the proposal will generate employment and benefits for businesses and the economy. These benefits have the potential to result in social upliftment and improved quality of life primarily at a local and regional (Auckland) level, with indirect benefits at a national level. During construction this positive effect will be temporary (0-1 year) to short term (1-5 years), and during the operational phase this will be permanent (>15 years). The magnitude of the impact is considered high in both the construction and operational phase given any people and households will benefit from this proposal. The consequence of the impact is rated as major in the construction phase given the significant scale of investment, and moderate in the operational phase, and the probability is considered likely for both development phases. The potential for social upliftment and improved quality of life occurring as a result of this proposal is therefore rated as being of **extreme (positive) significance** during the construction phase and **high (positive) significance** in the operational phase.

Enhancement

98. There is an opportunity to enhance the local benefits of the proposal by increasing local workforce participation (by hiring locally) and prioritising the use of local business involvement in prison operations.

6.2.2 *REDUCED COMMUNITY COHESION AND STABILITY*

99. In the context of this SIA, community cohesion refers to the extent to which the Auckland Prison is considered part of the local community and the stability of the relationship between the prison and the community.
100. From interviews it was confirmed that historically there was a good working relationship between the Prison and the local community, with regular communication and collaboration on various initiatives. Community representatives spoke of a time when prisoners worked in Sanders Reserve, the prison provided support to the community such as providing trees from their nursery and a sign for the local school. Many interviewees described the current relationship between the prison and the local community as 'non-existent', and the prison described as 'unresponsive' when approached to participate in recent community events and initiatives. An opinion was shared that not all residents want a relationship with the prison and would rather go about their daily lives without thinking about the presence of the prison. The Auckland Prison General Manager recognised the need for an improved relationship and the re-instatement of a system of communication with the community.
101. Residents participating in the SIA Questionnaire were asked to indicate their level of agreement with several statements relating to the existing relationship with the prison, information provided by the prison and the feedback mechanism that exists between the prison and the community. When asked whether they were happy with the current relationship between the prison and the local community, most residents (37%) stated agreed, 31% neither disagreed or agreed, and 32% disagreed with the statement. A similar response was received in response to the statement 'the prison is part of the local community'. In respect of current prison operations, most of the questionnaire respondents (46%) were happy with the level of information currently provided by the prison. Most respondents (43%) disagreed that there was a clear and accessible way to share feedback with the prison, 30% neither disagreed nor agreed, and 27% responded positively to this statement. Overall, the responses indicated mixed sentiment amongst residents with some satisfied with the level of interaction between the prison and the community and others indicating a need for improved communication, information sharing and feedback mechanisms. Most respondents (64%) to the questionnaire stated that they understand why the increase in prison capacity is needed, however 65% indicated they are concerned about the proposal.
102. During the Corrections-led consultation process, the PRRA, representing a sector of the local community (largely ratepayers i.e. lifestyle property owners; primarily owners of the smaller lifestyle sections), have been outspoken about their opposition to the proposed increase in capacity at Auckland Prison. In addition to concerns relating the capacity of local infrastructure to support the proposal (roads, power, sewage, water), safety and environmental impacts (noise, light, visual etc) their key social concerns include a lack of trust in Corrections and the limited consultation leading to uncertainty and anxiety regarding the proposal.
103. Good communication is required to address uncertainty associated with this proposal and the overall lack of community trust of the prison. There is a need to develop a more constructive relationship the Prison and the local community through the provision of a clear pathway for consultation, as such the establishment of Community Liaison Group (CLG) is required. With improved communication and consultation there may be opportunities for the prison and community to collaborate on future initiatives that are mutually beneficial such as emergency preparedness.

Impact Statement

104. There is currently a lack of relationship between the prison and the local community and given there is some community opposition to the proposal, there is the potential for an impact on community cohesion and stability during the planning, construction and operational phase of the proposal. The extent of the impact is on the local community and considered to be medium term. A strong community relationship is not important to all community members, as such the magnitude of the

impact is considered to be low to moderate (i.e. few to moderate number affected). The consequence of the impact is considered minor given the entire local community will not be affected, and the probability of the impact is considered possible. The overall impact has been rated as being of **moderate significance**. The mitigation proposed has the potential to reduce the rating of this impact to **low significance**. Given the opportunity to enhance the benefits of an improved relationship between the prison and the local community, it is possible to create a positive impact within the local area.

Mitigation

- It is recommended that **Community Liaison Group (CLG)** be formed with representatives of Auckland Prison and the local community. Regulatory authorities, law enforcement and emergency services, and the local school will also be invited to participate in the forum. The purpose of the CLG is to open lines of communication between the community and the prison and to provide a forum to discuss issues and interests relating to the proposal and prison operations.
- Provision of a mechanism for complaints registration and feedback during both planning, construction and operational phase.
- Establish clear lines of communication between the prison and the local community.

6.2.3 POPULATION INFLUX AND INCREASED DEMAND FOR HOUSING

105. The proposed increase in prisoner capacity at Auckland Prison may result in an increased demand for housing in the local area due to medium to long term population influx due to:
- staff and service providers choosing to live close to their place of work, the effect of which would be an increased demand for housing in the local community; and
 - prisoner families moving into the local areas to be closer to the prison or prisoners choosing to settle in the local area following release.
106. There are approximately 580 staff currently employed at Auckland Prison. Corrections anticipate that staff numbers may increase by 50%, to approximately 870 staff, to support the increase in prisoner capacity to 1,220 prisoners.
107. According to employee-owned data provided by Corrections, 16 staff members have indicated the suburb of residence as Pāremoremo, and the majority (69%) of these staff hold custodial roles at Auckland Prison. Corrections records show that 29% of the houses in the village are occupied by staff, and an Estate Agent interviewed mentioned that there are many prison workers that rent houses in the local area, primarily secondary homes on some of the larger lifestyle properties in Pāremoremo. Market Economics (2025) report that 10% of the current staff employed live within 10km of the prison. Most staff live outside of Pāremoremo, and commute by car to the Auckland Prison for work from across the Auckland region.
108. Availability of property was not raised as a significant concern in the SIA questionnaire. The impact of the current prison on the availability of property was rated by most residents (53%) as having no impact, with 11% rating this impact as positive and 36% as negative. Residents participating in the questionnaire indicated that they anticipate that the construction and operational phase will have a negative impact on property availability.
109. Interviews with local estate agents confirmed that there is a low property turnover with many of the existing residents having lived in Pāremoremo for a long time. Very few prospective property buyers work at the prison, however there are many staff that are tenants of lifestyle property landowners. The proposed increased in staff requirements to support the proposal may result in an increased demand for rentals in Pāremoremo. Whilst there is limited potential for development in the area

given majority of lot sizes are consistent with minimum rural-countryside living zone, according to one of the community representatives' interviews, permissive planning rules allow for minor dwellings for rental income.

110. Existing security checks undertaken for applicants for tenancy within the Prison Village. Given the village provides affordable housing within the local area, outside of the village property purchase and rental costs may be cost prohibitive for many. In addition, it is considered highly unlikely that released prisoners will choose to settle in Pāremoremo due to a lack of affordable accommodation, limited access to employment opportunities and distance from family and support networks. The increase in prison capacity is unlikely result is a change in the current profile of residents in the local community, and as such this potential influx of prisoner families or released prisoners into the local area is considered negligible and has not been assessed further.

Impact Statement

111. An increase in prison capacity will require increased staff and service providers during the operational phase which may result in population influx and the associated increased demand for housing in the local area. This is likely to be applicable to rental housing primarily over a short duration (1-5 years). The magnitude of the impact is low as it is expected that the number of people that will choose to move into, and that can be accommodated in, the local area is low (i.e. people will only move into the area if there is accommodation to support them). The consequence of the impact has been assessed as insignificant and the likelihood as possible, resulting in a rating of **low significance**.

Mitigation

112. None required.

6.2.4 CHANGE IN SENSE OF PLACE

113. In the context of this SIA, sense of place refers to an individual or community's relationship with their local environment i.e. the social and natural character of the environment within which people experience their everyday life. Sense of place is a term that often refers to the unique identity of an area or the connection to a place that is highly valued by those that live there.
114. There is the potential that the construction related activities and operational phases of the proposal have a negative impact on the sense of place and character of the local area that residents value.
115. From interviews with community representatives, it was clear that residents value their privacy and the quiet rural environment within Pāremoremo. According to those interviewed, many residents have lived in the local community for many years, there is a shared history and strong connection to the local area. During the SIA questionnaire, residents were asked to indicate the level of agreement with the following statement about the future Auckland Prison operations at an increased capacity: 'the character of the local area will be maintained'. The majority of respondents (65%) disagreed with this statement, whilst 20% indicated there would be no impact and 22% agreed that the character of the local area would be maintained.
116. During the consultation process led by Corrections, Iona Avenue residents raised concern about the proposed new entrance in Iona Avenue and the potential impact on their sense of place as a result of increased traffic and people movement including staff and visitors. In response to these concerns, Corrections have decided that the proposed new entrance will be constructed on Pāremoremo Road and that once this is operational the Iona Avenue access will no longer to be used to support prison operations.

Impact Statement

117. The construction phase has the potential to result in construction related nuisances that may be in contrast with the current environment that residents value. The extent of the impact will be most likely to limited to the Site and surrounds but may extend to the local community. The duration of the impact will be temporary (0-1 year) to short term (1-5 years) and the magnitude of the impact is considered low as it is expected that only a few people will be affected by a change in sense of place. The consequence of the impact has been assessed as minor and the likelihood as possible, resulting in a rating of **moderate significance**.
118. Given that the prison has been part of the local environment for close to 60 years, it is part of the identity of the area. A change in sense of place or character of the local area is therefore not likely during the operational phase of the proposal, however, if this did occur this impact would be permanent, limited to the Site and surrounding and the magnitude would be low (few affected). The consequence of the impact is considered insignificant and the probability unlikely. Overall, the potential change in sense of place during the operational phase is rated as **low significance**.

Mitigation

- Sharing of information relating to construction phase activities and the anticipated impacts with local residents.
- Clear and consistent messaging regarding the proposal on a regular basis.
- Provision of a mechanism for complaints registration and feedback during both the construction and operational phase.

6.2.5 *INCREASED DEMAND FOR COMMUNITY FACILITIES AND INFRASTRUCTURE*

119. Given the rural-residential nature of Pāremoremo, Ridgeview School is the primary community facility in the local community. Due to the increase in staff and service providers required to support the operation of the prison at an increased capacity, there may increase the demand for local schooling, resulting in an impact on enrolments at Ridgeview School.
120. There are two community halls, the Cultural Centre at the Oval within the Prison Village and the Pāremoremo Community Hall located at 505 Pāremoremo Road both of which are owned by Corrections. The proposal will not increase the demand for these facilities; however, the community have indicated a keenness to have future use of the Pāremoremo Community Hall. This facility is primarily used for Corrections staff and training purposes.
121. The interview with the Ridgeview School representative confirmed the long-term decline in the school roll from around 80 to 100 children to the current 50 to 60 students. Most of the children attending Ridgeview School live in the Prison Village or Pāremoremo Road, with only 5 parents being employees at the Prison. Accordingly, an increase in demand for school and an impact on school enrolments as a result of the proposal is unlikely. Should there be additional enrolments from those choosing to move into the area due to employment at the prison, the school has ample capacity to accommodate this.
122. During interviews with community representatives, key informants spoke of the local community's past use of the Pāremoremo Community Hall, also referred to as the Workingmen's Club, owned by Corrections. According to community representatives, the facility was a meeting place, and a venue for community events and functions until approximately 10 years ago. The hall was so well used by the community, that bookings were managed by a community representative with Corrections having to make contact to arrange to book the facility. It was noted by a number of community representative interviewed that the prohibition of alcohol at the hall did result in preference for other

venues for events. The facility created a regular touch point between the Prison and the community, a reason to connect and engage with one another. The feedback from interviews was consistent – the hall would be a great resource for the community however it is poorly maintained. Given its size and central location, the hall has been identified as an ideal facility to use as a community hub during emergencies.

Impact Statement

123. An increase in prison capacity has the potential for increased demand on local community facilities, such as Ridgeview School. The extent of this impact would be experienced at a local level for a permanent duration. The magnitude of the impact would be low (few affected). The consequence of the impact has been assessed as insignificant (given the capacity that existing within the school) and the probability is considered unlikely, resulting in a rating of **low significance**.

6.3 ENVIRONMENT

6.3.1 CHANGE IN THE QUALITY OF THE ENVIRONMENT

124. During the construction and operational phase, the proposed increase in capacity at the Auckland Prison may result in an impact on the quality of the environment for local residents due to increased traffic and noise, increased lighting, and visual impacts.
125. A suite of specialist studies has been undertaken to assess the proposed capacity increase in accordance with the parameters approach i.e. providing a basis for the assessment of effects on the environment whilst providing flexibility for future design and operational efficiencies. A high-level summary of the overall findings of the relevant studies is provided below:
- **Noise:** Following an assessment of the potential noise effects during the construction and operational phase of the proposal, the noise levels are expected to be reasonable. The assessment has recommended new designation conditions to ensure that noise levels comply with noise limits that are designed to deliver a very good level of amenity to adjacent receivers.
 - **Lighting:** The assessment confirmed that the development parameters and designation conditions proposed will ensure that external lighting effects will be avoided or mitigated to an acceptable level. Recommendations have been designed to ensure significant glare and light spill onto adjoining properties is avoided and that the loss of night sky viewing is minimised.
 - **Visual:** The views of the Prison Site are largely contained by terrain and vegetation. The visual catchments are limited to those residential properties in close proximity to the prison on elevated ground (i.e. parts of Pāremoremo, Iona and Merewhira Roads and Sanders Reserve). More distant views occur to the west (i.e. Lloyd, Ridge and Edward Jonkers Road, Riverhead). Comprehensive landscape and visual mitigation are proposed to minimise potential adverse impacts, including retention of existing vegetation and new planting. In addition, building colour and reflectivity is addressed in the designation conditions through provision of a Landscape and Architectural Design Report. In respect of both private and public viewpoints, mitigation measures such as planting, setbacks and design controls will effectively reduce visual impacts.
126. When asked the level of impact of the current prison operations, most residents (67%) that responded to the SIA questionnaire by stated that there was no impact on the quality of their everyday life, with 24% stating a negative impact and 9% and positive impact. Of the environmental impacts (noise, lighting and visual effects), the visual impact of the current prison was rated the most significant with 34% rating this as a negative impact, however the majority of respondents stated that these aspects don't impact on them currently. In comments provided in the questionnaire, lighting and noise was described as intrusive, disrupting the natural environment with reference given to

lighting glare at night and noise from radios in the early hours of the morning. It was noted that the landscaping improvements done several years ago to mitigate views of the prison were described as no longer effective.

127. During construction, most questionnaire respondents (72%) stated that there would be a negative impact on their quality of life. Lighting was not considered a likely impact of construction, whilst noise and visual effects were rated similarly, with approximately 60% of respondents identifying these as likely negative impacts. Overall, respondents commented generally that the prison construction would negatively impact their quality of life due to disruptions caused, however one respondent noted that the impact would not be significant given construction activities would be temporary. In respect of the operational of the prison at an increased capacity, 52% of respondents anticipate a negative impact on the quality of their life, with the remaining 48% indicating no impact or a positive impact. With regard to potential future environmental effects, noise was considered the most significant (69% anticipating a negative impact), with lighting and visual impacts rated similarly with 58% of respondents indicating these would have a negative impact on their daily lives. When asked whether, with the increase in the prison capacity, the quality of their environment will be maintained, 28% agreed with this statement, 4% neither disagreed or agreed, and 68% disagreed.
128. Environmental concerns were not a primary point of discussion during interviews with community representatives; however, one representative did mention lighting and visual aspects as being concerns to the local community.
129. Given the value the community put on the environment, the planting proposed, ecological enhancement, and proposed pest management initiatives across the Prison Site (which is intended to integrate with wider community initiatives) were well received by some community members during the Corrections-led consultation process. There is the potential to enhance the natural character of the local area through landscape and ecological restoration.

Impact Statement

130. The potential of the impact on amenity and change in the quality of life will be most likely be experienced by those in local study area (i.e. site and surrounds). During the construction phase these impacts will be temporary to short term, whilst during the operational phase the changes will be permanent. The magnitude of the impacts is considered low considering that not all members of the local community will be affected. The consequence of the impact is rated as minor, and the likelihood is considered unlikely given the specialist mitigation proposed. Overall, the impact is rated as being of **low significance**. The community have indicated a level of concern about the potential environmental effects and anticipate these to be significant. As such the sharing of information and providing an avenue to raise issues and receive feedback has the potential to alleviate concerns.

Mitigation

131. The mitigation identified within the environmental specialist assessments are supported.
132. Mitigation recommended to address the social effects associated with the potential change in quality of the environment and reduced amenity as a result of environmental effects include:
- Sharing of information relating to proposed construction and operational phase environmental impacts, including the mitigation proposed to reduce the impacts, to local residents on request.
 - Provision of a mechanism for complaints registration and feedback during both the construction and operational phase.

6.4 WELLBEING

6.4.1 REDUCED WELLBEING

133. Wellbeing includes positive emotions (i.e. contentment and happiness), satisfaction with life, fulfilment and positive functioning, and the absence of negative emotions such as depression and anxiety.
134. The proposed increase in capacity at the Auckland Prison has the potential to impact on the wellbeing of individuals as a result of:
- Anxiety – uncertainty associated with the potential effects of the proposal on individuals. Some people are more sensitive than others to change, and there may be some people that are concerned about the anticipated effects of the proposal to the extent that this affects their overall wellbeing.
 - Change in the quality of the environment – changes in amenity associated with the environment in which people live, particularly relating to aspects that people value about their lifestyle and the location in which they live. Environmental effects such as noise, visual impacts, traffic have the potential to impact amenity.
135. Health and wellbeing was not rated as a significant impact of the current prison operations with 6% of respondents indicating a positive impact, 76% no impact, and 18% indicating a negative impact. The majority of respondents (78%) stated that the construction phase would have a negative impact on health and wellbeing. In response to the anticipated level of impact of future expanded prison operations, 65% of questionnaire respondents expect a negative impact on health and safety.
136. During interviews with key informants the concept of potential impact on wellbeing was not specifically identified, however this was inherent in some of the concerns, fears and perceptions raised. Heightened levels of anxiety are often a result of 'not knowing' which can be mitigated largely through the provision of information. Concerns relating to the potential change in the quality of the environment and reduced residential amenity were raised by residents responding to the SIA questionnaire and key informants interviewed. The anticipated impact of the proposal on the quality of the environment has been assessed in **Section 6.3**.

Impact Statement

137. The proposal has the potential to affect the wellbeing of individuals within the local area over the planning, construction and operational phases (i.e. medium term). It is anticipated that the magnitude of this impact would be limited to a few affected people and is considered possible. Overall, this impact has been assessed to be of **moderate significance**, with the potential to reduce this to **low significance** through clear and consistent communication and provision of information as well as the provision of a complaints registration and feedback process.

Mitigation

- Clear and consistent communication and provision of information to the local community regarding the proposal and anticipated impacts
- Provision of a mechanism for complaints registration and feedback during both the construction and operational phase.

6.5 FEARS, PERCEPTIONS AND ASPIRATIONS

138. Fears and aspirations under the IAIA framework include perceptions of safety, fears about the future of the community, and aspirations for the future and future generations.

139. In the context of this SIA, the fears and perceptions raised by some residents related primarily to:

- **Future increases in prison capacity** – for some residents their aspirations for their future and the future of the local community do not include an increase in prison capacity, and the proposal has come as a surprise. Some residents recall that previous governments committed to no further increased at the prison and this has resulted in reduced trust between the community and the prison.
- **Loss of tenancy for Prison Village residents** – the removal of the prison designation from the Prison Village has resulted in some fears that their tenancy agreements will be affected. Corrections have confirmed that there will be no change to tenancy arrangements as result of this proposal, and that Colliers will continue to manage the village on Corrections behalf.
- **Reduced security due to designation uplift** – some residents are concerned that the uplift of the designation on the Prison Village will result in Corrections relinquishing control over occupancy and the removal of security checks resulting in reduced safety of the surrounding community and loss of property values.

140. The significance of these local community fears relating to the proposal is outside of the scope of this assessment. These are acknowledged here and can be addressed through the provision of appropriate communication and consultation to reduce uncertainty, monitor risks should they arise, and address misconceptions.

6.6 ASSESSMENT SUMMARY

141. The potential social impacts identified have been assessed using the methodology outlined in **Section 3**. A detailed impact assessment matrix has been prepared (**Appendix E**), a summary of which is provided below in **Table 6.2**.

Table 6.2: Assessment Summary

Impact	Phase	Significant Pre-Mitigation	Significance Post-Mitigation
Reduced accessibility due to increased traffic volumes	Construction	High (negative)	Moderate (negative)
	Operation	Extreme (negative)	Low (negative)
Reduced road safety for road users, particularly pedestrians	Construction	Moderate (negative)	Low (negative)
	Operation	High (negative)	Low (negative)
Reduced community safety and security as a result of increased prison visitors into the local area	Operation	Moderate (negative)	Low (negative)
Social upliftment from employment, benefits for business and the economy	Construction	Extreme (positive)	Extreme (positive)
	Operation	High (positive)	High (positive)

Reduced community cohesion and stability (relationship between the prison and the community)	Planning, Construction and Operation	Moderate (negative)	Low (negative)
Population influx and increased demand for housing	Operation	Low (negative)	Low (negative)
Change in sense of place and character of the local area	Construction	Moderate (negative)	Moderate (negative)
	Operation	Low (negative)	Low (negative)
Increased demand for community facilities and infrastructure	Operation	Low (negative)	Low (positive)
Change in the quality of the environment	Construction and Operation	Low (negative)	Low (negative)
Reduced wellbeing due to anxiety and / or a change in the quality of the environment	Planning, Construction and Operation	Moderate (negative)	Low (negative)

6.6.1 SUMMARY OF SOCIAL MITIGATION MEASURES

142. The SIA has resulted in the identification of measures to mitigate the potential negative social impacts, and enhancement measures to maximise the benefits of the proposal. A consolidated table presenting the mitigation measures is provided below, providing a distinction between those measures that are recommendations and those which have been carried forward into the draft designation conditions.

Table 6.3: Mitigation Summary

Impact	Mitigation / Enhancement Measures	
Reduced accessibility due to increased traffic volumes	Provision of construction phase traffic related information to residents in the local study area and members of the local community including what construction activities are proposed to take place and the likely implications.	Recommendation
	Provision of a mechanism for complaints registration and feedback during both the construction and operational phase.	Proposed Condition
Reduced road safety for road users, particularly pedestrians	Provision of construction phase traffic related information to residents in the local study area and Ridgeview School including what construction activities are proposed to take place and likely implications.	Recommendation
	Provision of a mechanism for complaints registration and feedback during both the construction and operational phase.	Proposed Condition
Reduced community safety and security as a result of increased prison visitors into the local area	Maintain a community notification system.	Proposed Condition
	Provision of a mechanism for complaints registration and feedback during both the construction and operational phase.	Proposed Condition
	Community reporting of prison visitors related incidents, and increased police response as required	Recommendation

Social upliftment from employment, benefits for business and the economy	Enhance the local benefits of the proposal by increasing local workforce participation and prioritising the use of local business involvement in prison operations	Recommendation
Reduced community cohesion and stability (relationship between the prison and the community)	Establishment of a Community Liaison Group (CLG) with representatives of Auckland Prison and the local community. Regulatory authorities, law enforcement and emergency services, and the local school will also be invited to participate in the forum. The purpose of the CLG is to open lines of communication between the community and the prison and to provide a forum to discuss issues and interests relating to the proposal and prison operations.	Proposed Condition
	Provision of a mechanism for complaints registration and feedback during both planning, construction and operational phase.	Proposed Condition
	Establish clear lines of communication between the prison and the local community	Recommendation
Population influx and increased demand for housing	N/A	
Change in sense of place and character of the local area	Sharing of information relating to construction phase activities and the anticipated impacts with local residents.	Recommendation
	Clear and consistent messaging regarding the proposal on a regular basis.	Recommendation
	Provision of a mechanism for complaints registration and feedback during both the construction and operational phase.	Proposed Condition
Change in the quality of the environment	Sharing of information relating to proposed construction and operational phase environmental impacts, including the mitigation proposed to reduce the impacts, to local residents on request.	Recommendation
	Provision of a mechanism for complaints registration and feedback during both the construction and operational phase.	Proposed Condition
Reduced wellbeing due to anxiety and / or a change in the quality of the environment	Clear and consistent communication and provision of information to the local community regarding the proposal and anticipated impacts	Recommendation
	Provision of a mechanism for complaints registration and feedback during both the construction and operational phase.	Proposed Condition

6.7 PROPOSED CONDITIONS

143. Those key mitigation measures identified through the SIA have led to the development of proposed conditions to support the designation alternation. The proposed conditions are presented below:

	Community Liaison Group
DES46	<p><u>The Requiring Authority shall establish a Community Liaison Group (CLG) within 12 months of [date the designation alteration is confirmed].</u></p> <p><u>The purpose of the CLG is to facilitate a relationship between Auckland Prison and the local community.</u></p> <p><u>The CLG shall include:</u></p> <ul style="list-style-type: none"> (a) <u>Representatives from Auckland Prison, including an officer whose responsibilities include the CLG.</u> (b) <u>Up to 4 representatives from community groups representing the Pāremoremo Residents.</u> <p><u>In addition to the representatives identified above, the CLG may include representatives from:</u></p> <ul style="list-style-type: none"> (c) <u>Auckland Council, including Auckland Transport (road controlling authority) and Watercare.</u> (d) <u>New Zealand Police</u> (e) <u>Fire and Emergency New Zealand</u> (f) <u>Ridgeview School.</u> <p><u>The Requiring Authority shall:</u></p> <ul style="list-style-type: none"> (a) <u>Facilitate a meeting of the CLG at least every six months, or more or less frequently if requested by the majority of members.</u> (b) <u>provide reasonable administrative support to facilitate the functioning of the CLG, including venue, meeting coordination, and distribution of materials.</u> (c) <u>prepare a record of the actions agreed at each meeting.</u> (d) <u>review the effectiveness and relevance of the CLG annually, with feedback from members.</u>
DES47	<p>The Requiring Authority shall not be in breach of condition DES46 if any one or more of the named groups in specified in Condition DES46 either do not wish to attend particular meetings or be members of the CLG.</p>
	Complaints Procedure
DES48	<p>The Requiring Authority shall establish and maintain a complaints register for any complaints received from the community. As a minimum, the register shall record, where this information is available, the following:</p> <ul style="list-style-type: none"> (a) The date, time, and details of the incidents that resulted in a complaint. (b) The location of the complainant when the incident was detected. (c) The possible cause of the incident.

	<p>(d) Any corrective action taken by Requiring Authority in response to the complaint, including timing of the corrective action.</p> <p>(e) Communication with the complainant in response to the complaint.</p> <p>Feedback on the number and nature of complaints received and resolved is to be provided at the CLG meetings.</p>
DES49	<p>The Requiring Authority shall maintain a community notification system, which clearly outlines what the community needs to be notified of and how the community will be informed, including in the event of emergencies, incidents or escapes. Contact information for community representatives shall be kept up to date in consultation with the CLG.</p>

7 CONCLUSION

144. The proposed increase in capacity of the Auckland Prison has the potential to result in both positive and negative social impacts. The impacts have been assessed using an internationally recognised framework, and the significance of evaluated before mitigation and post mitigation.
145. The SIA has confirmed that the proposal represents significant social benefits at a local, regional and national level. In summary, the most significant positive social impact of the proposal was identified as:
- Social upliftment and improved quality of life as a result of employment generation, benefits for businesses and the economy, most significantly in the construction phase and a meaningful impact associated with the operational phase of the proposal.
146. Most of the negative impacts associated with the proposal were evaluated to be of low significance with mitigation, except for the following local construction phase impacts which were assessed to be of moderate significance:
- Reduced accessibility due to increased traffic volumes including heavy vehicles during the construction phase, which may cause delays and congestion and impact on individuals' daily movements and behaviours.
 - Change in the sense of place and character of the local area due to construction phase activities.
147. The recommendations identified in the relevant technical studies are supported and additional social mitigation measures have been identified to ensure that the potential social impacts are appropriately avoided, remedied or mitigated.
148. Designation conditions have been proposed requiring the establishment of a Community Liaison Group and a complaints procedure.
149. The Auckland Prison has been integral to the local environment for close to 60 years. Whilst there are some within the community that are opposed to the proposal, and have concerns and fears regarding the potential impacts, the SIA has determined that the anticipated impacts can be managed to an acceptable level. Sharing of information and the development a constructive relationship between the prison and the community is key to addressing community concerns. Improved communication and consultation have the potential to create the foundation for future collaboration between the prison and the local community.

APPENDIX A: EXPERT SUMMARY STATEMENT

Expert Summary Statement

Qualifications and experience

This report has been prepared by the following authors who have the following qualifications and expertise:

Name	Qualification / Experience
Hilary Konigkramer (author)	Refer to attached CV
Wendy Turvey (peer reviewer)	Refer to attached CV

Code of conduct for expert witnesses

In the context of this application, which is made under the Fast-track Approvals Act 2024, and in relation to which there may be no hearing, we have been asked to confirm that the reporting has been prepared in accordance with the Environment Court's Code of Conduct for Expert Witnesses.

We confirm that we have read the Environment Court's Code of Conduct for Expert Witnesses, as contained in Section 9 of the Environment Court's Practice Note 2023, and we agree to comply with it.

The data, information, facts and assumptions that we have considered in forming our opinions are set out in our technical report. The reasons for the opinions expressed are also set out in the technical report.

We confirm that the matters addressed in the technical report are within our area of expertise, with the exception of where we confirm that we are relying on information provided by another person. We have not omitted to consider material facts known to us that might alter or detract from our opinions expressed. We have specified where our opinion is based on limited or partial information, and we have identified any assumptions we have made in forming our opinions.

APPENDIX B: LITERATURE REVIEW

This literature review summarises findings from Social Impact Assessments (SIA) conducted for three recent prison expansions: Waikeria Prison in New Zealand (Quigley, 2017), the South Coast Correctional Centre in New South Wales, Australia (BBC Consulting Partners, 2016a) and the Cessnock Correctional Centre, also in New South Wales (BBC Consulting Partners, 2016b). The Waikeria SIA was prepared prior to construction, providing a forward-looking analysis of potential impacts, while the South Coast and Cessnock assessments were conducted after construction and during early operation, offering a retrospective reflection of observed effects. The expansions increased capacity significantly: from 650 to 3,000 prisoners at Waikeria, 600 to 960 at South Coast, and 880 to 1,880 at Cessnock.

For additional context, three SIAs for new prisons were also reviewed: Gartree 2 in the UK (Scott, 2021), a new federal prison in Letcher County, Kentucky (Gaston, 2016) (both prepared pre-construction) and correctional facilities in Wiri, Auckland (Corydon Consultants, 2014b, 2014b), which was developed during early construction and initial operation, drawing on baseline data and ongoing stakeholder consultation. Subsequent annual social impact monitoring reports for Wiri have also been reviewed to provide insights into the actual impacts seen over time (WSP New Zealand, 2021, 2022).

The findings have been split into two phases: construction phase and operational phase.

CONSTRUCTION IMPACTS

SHORT-TERM EMPLOYMENT AND ECONOMIC BENEFITS

- **Construction of new or expanded prison facilities creates a surge in demand for workers and services in the local economy.** At Waikeria, the construction phase generated approximately 1,600 full-time job years over two years, significantly boosting local employment. Cessnock saw a peak of 500 on-site workers, and South Coast 60, with both projects incorporating mandatory local, Indigenous, and apprentice workforce targets. The new men's prison at Wiri created a large burst of temporary jobs, with nearly 2,500 people working onsite over a year.
- **The influx of construction workers can temporarily raise the population, placing demands on local infrastructure and services.** Projects such as Cessnock and South Coast reported notable peaks in on-site workforce size, which required careful management to avoid undue strain on local resources.
- **Large-scale construction brings significant direct and indirect financial benefits to the area.** For Gartree 2 in the UK, construction was expected to inject £72.8 million (around \$164 million NZD) in net direct gross value added into the regional economy.

ACCOMMODATION AND INFRASTRUCTURE PRESSURE

- **Large-scale construction projects generate an influx of workers, increasing demand for short-term housing and temporary accommodation in local areas.** At Waikeria, existing accommodation options such as motels were fully booked during peak periods, which forced workers to seek lodging in distant towns like Hamilton (over an hour away). Similar strains on temporary accommodation were observed in South Coast and Cessnock, with limited capacity for additional workers.
- **The arrival of construction workers can make rental markets more competitive, potentially leading to increased prices and reduced availability for local residents.** In Waikeria, concerns were highlighted about rental affordability due to heightened demand from the construction workforce. South Coast and Cessnock also noted the risk of rental shortages and price increases in nearby communities.

COMMUNITY PERCEPTIONS

- **The influx of construction workers can lead to higher traffic volumes on local roads, raising concerns about safety and congestion.** At Waikeria, residents expressed worries about increased traffic — especially on Waikeria Road, which is the main route to the prison. However, these concerns were generally managed successfully with appropriate mitigation measures. In NSW, traffic impacts were less prominent, and concerns diminished over time.
- **The arrival of a temporary workforce may raise community fears about antisocial behaviour or disruption of local norms.** While apprehension was noted in communities near Waikeria regarding the behaviour of construction workers, no significant issues materialized. At the NSW site, such concerns were minimal and faded as the project progressed.

OPERATIONAL IMPACTS

LONG-TERM EMPLOYMENT AND ECONOMIC BENEFITS

- **Large-scale prison expansions create significant numbers of stable, full-time jobs, particularly in corrections, health, and programme delivery roles.** At Waikeria, staff numbers were expected to rise from 350 to about 1,400, with approximately 1,050 new positions — half filled locally. South Coast and Cessnock expansions saw similar increases in staffing across multiple sectors.
- **Correctional facility roles typically offer earnings well above the minimum wage, improving local household incomes and economic security.** Waikeria corrections roles paid 59–86% above minimum wage, leading to a boost in household financial stability. Comparable wage advantages were recorded in other case study locations.
- **The operational phase of new prisons contributes substantial economic benefits to the wider region through direct employment and indirect flow-on jobs in supporting industries.** At Gartree 2, projections indicated 778 staff, most residing within a 40-mile (64 km) radius, fostering local economic growth. Kentucky anticipated a \$123 million (~204 million NZD) operational impact, with 300 full-time equivalent positions and broader employment effects in the community.

HOUSING AND SERVICE DEMAND

- **The relocation of new prison staff and their families can lead to population increases in surrounding communities.** Nearly 1,000 new residents (staff and family members) were projected to move as a result of Waikeria, primarily to nearby towns such as Te Awamutu, Otorohanga, and Kihikihi. While this growth was largely welcomed, it did prompt some concerns about the ability of small towns to absorb new residents.
- **Increased demand for housing (both for purchase and rent) can result from incoming staff, their families, and relocating prisoners or released individuals.** In Waikeria and the South Coast and Cessnock regions, there were concerns about the affordability and supply of rental properties, as well as increased pressure on public housing and emergency accommodation. In Wiri, there was an initial uptick in demand for housing driven by prison staff, but subsequent social impact monitoring found that this had minimal effect on the community.

EDUCATION AND CHILDCARE

- **Prison expansions can increase enrolments at local early childhood centres and schools due to the relocation of staff and their families but increases tend to be modest.** At Waikeria, influx of new residents had minimal impact on local schools and childcare centres, as most had sufficient capacity and adapted well to the increase in student numbers. The South Coast and Cessnock

regions experienced similar outcomes, with schools successfully accommodating additional enrolments without significant strain.

HEALTH AND COMMUNITY SERVICES

- **New prison developments can increase the demand for general practitioner (GP) and mental health services, both for relocated staff families and for released prisoners re-entering the community.** At Waikeria, the local District Health Board (DHB) expected a moderate rise in GP visits but was less certain about the additional mental health support required, particularly for families and those leaving prison.
- **Expansion can strain hospitals, emergency care, and welfare agencies due to increases in local population and the complexity of prisoner and family needs.** In South Coast and Cessnock, hospital and welfare services generally felt confident in their ability to manage the expected increases, though ongoing collaboration was recommended.
- **There may be intensified need for drug and alcohol treatment, psychological counselling, and family violence interventions, especially where community resources are already limited.** At Wiri, it was anticipated there would be additional demand on these specialist services, while some non-government organisations (NGOs) reported that their capacity was insufficient to meet the heightened demand, particularly when reliant on limited funding or volunteer resources.

IMPACTS ON PRISONERS, FAMILIES, AND VISITORS

- **New or expanded prison facilities may prompt some prisoner families to move closer for visitation, especially if the facility is located in a rural or remote area, however the impact tends to be low.** Most SIAs observed that relatively few families permanently relocated, leading to minimal added pressure on social and support services.
- **Prisons can generate increased visitor traffic, particularly on weekends, which may affect local transportation and infrastructure.** Concerns regarding visitor traffic were mostly limited to higher weekend volumes. These were typically managed through scheduled visiting hours and transport services. Rural isolation of some facilities still posed logistical challenges for distant visitors.

COMMUNITY PERCEPTIONS

- **Concerns that prison expansions might contribute to a negative reputation or stigma for the local community, potentially affecting its image and desirability.** In Waikeria, initial fears around stigma did not materialise; instead, strong local support emerged, attributed to economic benefits and the established presence of the facility. The South Coast and Cessnock regions reported stable crime trends and little impact on local image despite the prisons' existence.
- **Fears that expanding prisons could lead to an increase in local crime, either through increased population or changes in community dynamics.** Both the South Coast and Cessnock case studies found that crime trends remained stable after the expansion, allaying community concerns.
- **Worries that pre-existing socio-economic challenges could result in heightened negative social impacts, though long-term impacts are minimal.** Long-term monitoring at Wiri found that the changes in local crime statistics, including crime rates and gang presence was negligible.

MITIGATION MEASURES

All six prison developments incorporated mitigation strategies to manage the social impacts identified. In the three expansion projects — Waikeria, South Coast, and Cessnock — mitigation focused on minimising disruption during construction, supporting local employment, and easing pressure on infrastructure and housing. For instance, the Waikeria project introduced a community communications strategy, traffic management plans, and dedicated efforts to prioritise local hiring, particularly in the construction workforce. Similarly, the South Coast and Cessnock expansions implemented targets for Indigenous workers and apprentices, as well as monitoring systems to address concerns about antisocial behaviour among construction workers. These pre-emptive measures helped to alleviate public concerns and support a more positive local reception as construction progressed.

Operational phase mitigation was more variable. In Waikeria, Corrections coordinated with councils and health services to anticipate service demand but acknowledged limits in local capacity to absorb these impacts. In the NSW prison expansions, formalised operational mitigation mechanisms were not well established, though ongoing communication with local councils and community service providers was encouraged. Meanwhile, the Wiri project introduced a highly structured mitigation framework, including the establishment of a Community Impact Forum, Tangata Whenua Committee, and Social Impact Fund Allocation Committee. This enabled ongoing monitoring, community input, and funding for local responses to emerging impacts.

The other new prison projects (Gartree and Kentucky) included more conventional mitigation strategies. These focused on environmental management, traffic, and design considerations to address visual or amenity concerns.

APPENDIX C: CENSUS BASELINE DATA

Census data is summarised for each area (Local Study Area, Prison Village, Upper Harbour Local Board, Auckland Region, and New Zealand). Key points to note:

- The local area statistics exclude the specific Statistical Area 1 (SA1) unit containing the prison (SA1 7001785) for all data except population counts. This exclusion aimed to avoid skewing statistical results due to the prison population.
- For population counts, the entire local area, including the prison SA1 unit, was included. The prisoner population (from Department of Corrections) was subtracted from each year's total to reflect the local area's actual population.
- For all other data points, the local area excluding SA1 7001785 was used to calculate percentages (with the assumption being that the excluded area does not substantially differ from the rest of the local area).

Table 1. Population

Population	Local Study Area	Prison Village	Upper Harbour	Auckland	New Zealand
2013 count	848	315	53,673	1,415,331	4,241,955
2018 count	765	309	62,865	1,571,703	4,699,740
2023 count	873	282	76,965	1,656,444	4,994,010
2013–18 change (%)	-9.8%	-1.9%	17.1%	11.0%	10.8%
2018–23 change (%)	14.1%	-8.7%	22.4%	5.4%	6.3%
2013–23 change (%)	2.9%	-10.5%	43.4%	17.0%	17.7%

Table 2. Life stage groups

Life stage group	Local Study Area	Prison Village	Upper Harbour	Auckland	New Zealand
Under 15 years	20.6%	27.1%	18.5%	19.3%	18.8%
15–29 years	19.9%	22.9%	19.4%	20.9%	19.4%
30–64 years	49.0%	44.8%	48.6%	46.5%	45.3%
65 years and over	10.6%	5.2%	13.5%	13.3%	16.6%

Table 3. Ethnicity

Ethnicity	Local Study Area	Prison Village	Upper Harbour	Auckland	New Zealand
European	71.8%	62.6%	44.8%	43.5%	58.5%
Māori	11.1%	18.3%	5.6%	10.7%	15.4%
Pacific Peoples	3.8%	7.8%	2.9%	14.5%	7.7%
Asian	9.9%	5.2%	41.5%	27.3%	14.9%
Middle Eastern/Latin American/African	0.9%	0.9%	3.3%	2.4%	1.6%
Other Ethnicity	2.6%	5.2%	2.0%	1.6%	1.9%

Table 4. Deprivation Index (population-weighted)

NZDep estimate	Local Study Area	Prison Village	Upper Harbour	Auckland	New Zealand
Mean NZDep2023	4.4	9.0	3.5	5.6	5.6

Table 5. Highest qualification

Highest qualification	Local Study Area	Prison Village	Upper Harbour	Auckland	New Zealand
No qualification	10.2%	17.6%	8.3%	12.6%	15.1%
Level 1 certificate	9.7%	8.8%	6.2%	7.7%	9.9%
Level 2 certificate	10.8%	7.4%	6.7%	7.8%	9.4%
Level 3 certificate	13.2%	17.6%	12.0%	12.3%	12.2%
Level 4 certificate	7.5%	10.3%	5.4%	6.4%	8.5%
Level 5 diploma	5.8%	7.4%	4.3%	4.3%	4.9%
Level 6 diploma	5.7%	4.4%	4.7%	4.2%	4.6%
Bachelor's degree and Level 7 qualification	14.1%	7.4%	22.0%	18.1%	14.9%
Post-graduate and honours degrees	5.5%	2.9%	7.7%	6.8%	5.9%
Master's degree	4.8%	1.5%	7.6%	5.6%	4.2%

Doctorate degree	2.0%	0.0%	1.1%	1.0%	1.0%
Overseas secondary school qualification	7.8%	10.3%	11.3%	8.7%	5.6%
Not elsewhere included	3.0%	4.4%	2.8%	4.6%	3.9%

Table 6. Income (population-weighted)

Income estimate	Local Study Area	Prison Village	Upper Harbour	Auckland	New Zealand
Mean income	\$54,056	\$46,159	\$52,919	\$50,602	\$48,767
Mean median income	\$41,168	\$47,349	\$49,155	\$46,174	\$43,506

Table 7. Labour force status

Labour force status	Local Study Area	Prison Village	Upper Harbour	Auckland	New Zealand
Employed full-time	54.8%	54.4%	54.3%	53.2%	51.2%
Employed part-time	13.6%	13.2%	12.5%	12.1%	13.5%
Unemployed	1.9%	1.5%	2.4%	3.3%	3.0%
Not in the labour force	29.7%	30.9%	30.9%	31.4%	32.4%

Table 8. Industry

Labour force status	Local Study Area	Prison Village	Upper Harbour	Auckland	New Zealand
Agriculture, Forestry and Fishing	1.1%	0.0%	0.5%	1.0%	5.1%
Mining	0.0%	0.0%	0.0%	0.1%	0.2%
Manufacturing	5.8%	5.8%	6.7%	9.0%	9.1%
Electricity, Gas, Water and Waste Services	0.2%	0.0%	0.6%	0.7%	0.9%
Construction	12.8%	11.5%	11.6%	10.3%	10.2%
Wholesale Trade	7.4%	3.8%	6.7%	6.6%	5.1%
Retail Trade	8.5%	9.6%	10.1%	9.0%	8.8%

Accommodation and Food Services	1.4%	1.9%	5.9%	5.9%	6.0%
Transport, Postal and Warehousing	3.4%	3.8%	2.9%	4.7%	4.1%
Information Media and Telecommunications	2.1%	3.8%	2.2%	2.2%	1.5%
Financial and Insurance Services	5.0%	3.8%	6.0%	4.3%	3.0%
Rental, Hiring and Real Estate Services	2.4%	0.0%	3.1%	2.6%	2.5%
Professional, Scientific and Technical Services	11.5%	5.8%	13.9%	12.1%	9.9%
Administrative and Support Services	5.9%	7.7%	3.5%	4.3%	3.9%
Public Administration and Safety	9.0%	15.4%	6.0%	5.6%	7.0%
Education and Training	9.0%	7.7%	7.5%	7.6%	7.7%
Health Care and Social Assistance	8.1%	9.6%	7.6%	8.7%	9.5%
Arts and Recreation Services	1.5%	1.9%	1.5%	1.6%	1.7%
Other Services	5.1%	7.7%	3.6%	3.7%	4.0%

Table 9. Occupation

Occupation	Local Study Area	Prison Village	Upper Harbour	Auckland	New Zealand
Managers	23.3%	16.7%	21.2%	18.1%	18.3%
Professionals	26.5%	18.8%	32.0%	29.4%	26.8%
Technicians and Trades Workers	13.6%	12.5%	11.2%	11.8%	12.5%
Community and Personal Service Workers	9.3%	14.6%	7.5%	8.4%	9.0%
Clerical and Administrative Workers	10.9%	14.6%	11.4%	11.3%	10.8%
Sales Workers	7.0%	6.2%	8.9%	8.2%	7.7%

Machinery Operators and Drivers	3.1%	6.2%	3.4%	5.9%	5.9%
Labourers	6.3%	10.4%	4.5%	6.9%	9.0%

Table 10. Dwelling status

Dwelling status	Local Study Area	Prison Village	Upper Harbour	Auckland	New Zealand
Occupied Dwelling	76.7%	86.2%	80.8%	80.5%	79.1%
Unoccupied Dwelling	10.9%	6.9%	8.7%	8.8%	9.9%
Residents Away	5.3%	3.4%	4.8%	4.7%	5.0%
Empty Dwelling	6.0%	3.4%	3.8%	4.0%	4.9%
Dwelling Under Construction	1.1%	0.0%	1.9%	1.9%	1.2%

Table 11. Home ownership

Home ownership	Local Study Area	Prison Village	Upper Harbour	Auckland	New Zealand
Dwelling owned or partly owned	34.1%	3.3%	57.0%	48.1%	55.0%
Dwelling not owned and not held in a family trust	44.3%	96.7%	30.8%	40.5%	34.0%
Dwelling held in a family trust	21.7%	0.0%	12.2%	11.4%	11.1%

Table 12. Years of residence (population-weighted)

Residence estimate	Local Study Area	Prison Village	Upper Harbour	Auckland	New Zealand
Mean years of residence	8.5 years	6.6 years	6.2 years	7.6 years	8.2 years

Table 13. Trips to work

Mode	Local Study Area	Prison Village	Upper Harbour	Auckland	New Zealand
Work at home	20.6%	12.8%	21.9%	18.1%	17.7%
Drive a private car, truck or van	53.6%	61.7%	53.4%	55.0%	55.0%
Drive a company car, truck or van	17.1%	12.8%	11.3%	10.0%	11.2%

Passenger in a car, truck, van or company bus	2.2%	4.3%	2.5%	3.7%	3.6%
Public transport	4.4%	4.3%	7.8%	7.8%	5.2%
Bicycle	0.1%	0.0%	0.6%	0.9%	1.9%
Walk or jog	1.3%	4.3%	1.7%	3.3%	4.2%
Other	0.7%	0.0%	0.9%	1.2%	1.4%

Table 14. Trips to education

Mode	Local Area	Prison Village	Upper Harbour	Auckland	New Zealand
Study at home	7.8%	12.5%	7.9%	6.7%	7.9%
Drive a car, truck or van	6.9%	3.1%	13.1%	10.2%	10.1%
Passenger in a car, truck or van	46.1%	40.6%	37.9%	41.1%	41.8%
Bicycle	2.7%	6.2%	1.7%	1.5%	3.4%
Walk or jog	5.7%	12.5%	15.5%	18.9%	17.9%
School bus	21.4%	18.8%	8.1%	6.6%	9.3%
Public transport	9.2%	6.3%	15.0%	13.6%	8.3%
Other	0.2%	0.0%	0.9%	1.3%	1.2%

APPENDIX D: SIA CONSULTATION OUTCOMES

Online Residents Questionnaire

The **Proposed Auckland Prison Capacity Increase Questionnaire** ran from 09/09/25 to 23/09/25, targeting residents living within local area surrounding Auckland Prison (Pāremoremo), including the Prison Village.

Table 1 provides a summary of the questionnaire respondents.

Table 4. Summary of questionnaire respondents	Respondents
Total	54
<i>Age</i>	
15–24	0% (0)
24–44	17% (9)
45–64	48% (26)
65+	22% (12)
Prefer not to say / no response	13% (7)
<i>Gender</i>	
Male	33% (18)
Female	50% (27)
Other	0% (0)
Prefer not to say / no response	17% (9)
<i>Annual household income</i>	
Less than \$60,000	7% (4)
\$60,001–\$100,000	13% (7)
\$100,001–\$150,000	11% (6)
\$150,001 or more	22% (12)
Prefer not to say / no response	46% (25)
<i>Location of residence (Figure 1)</i>	
Prison Village	19% (10)
Local area surrounding the prison	81% (44)
Elsewhere	0% (0)
<i>Duration of residence</i>	
Less than one year	0% (0)
1–5 years	17% (9)
5–10 years	11% (6)
More than 10 years	72% (39)
<i>Employment</i>	
Respondent and/or household members <u>employed</u> by Corrections	4% (2)
Respondent and household members <u>not employed</u> by Corrections	96% (52)
<i>Local groups</i>	
<u>Involved</u> in a local community group or organisation	31% (17)
<u>Not involved</u> in a local community group or organisation	67% (36)
No response	2% (1)



Figure 1: Map of Auckland Prison showing the local study area

Current prison operations

Respondents were asked to state their level of agreement with statements about the current Auckland Prison operations, on a scale from 'strongly disagree' to 'strongly agree' (Figure 2). Overall, the majority feel safe and secure living in the neighbourhood (80% agreement) and that the prison results in people moving to the area (59% agreement).

Results were more mixed for the other statements. Slightly more agreed that they are happy with the relationship between the prison and local residents (37% agree, 32% disagree) and that they are happy with the level of information provided by the prison (46% agree, 40% disagree); while slightly more disagree that the prison is part of the local community (33% agree, 36% disagree). However, when responding to the statement that there is a clear and accessible way to share feedback with the prison and receive a response, 43% disagreed, while only 26% agreed.

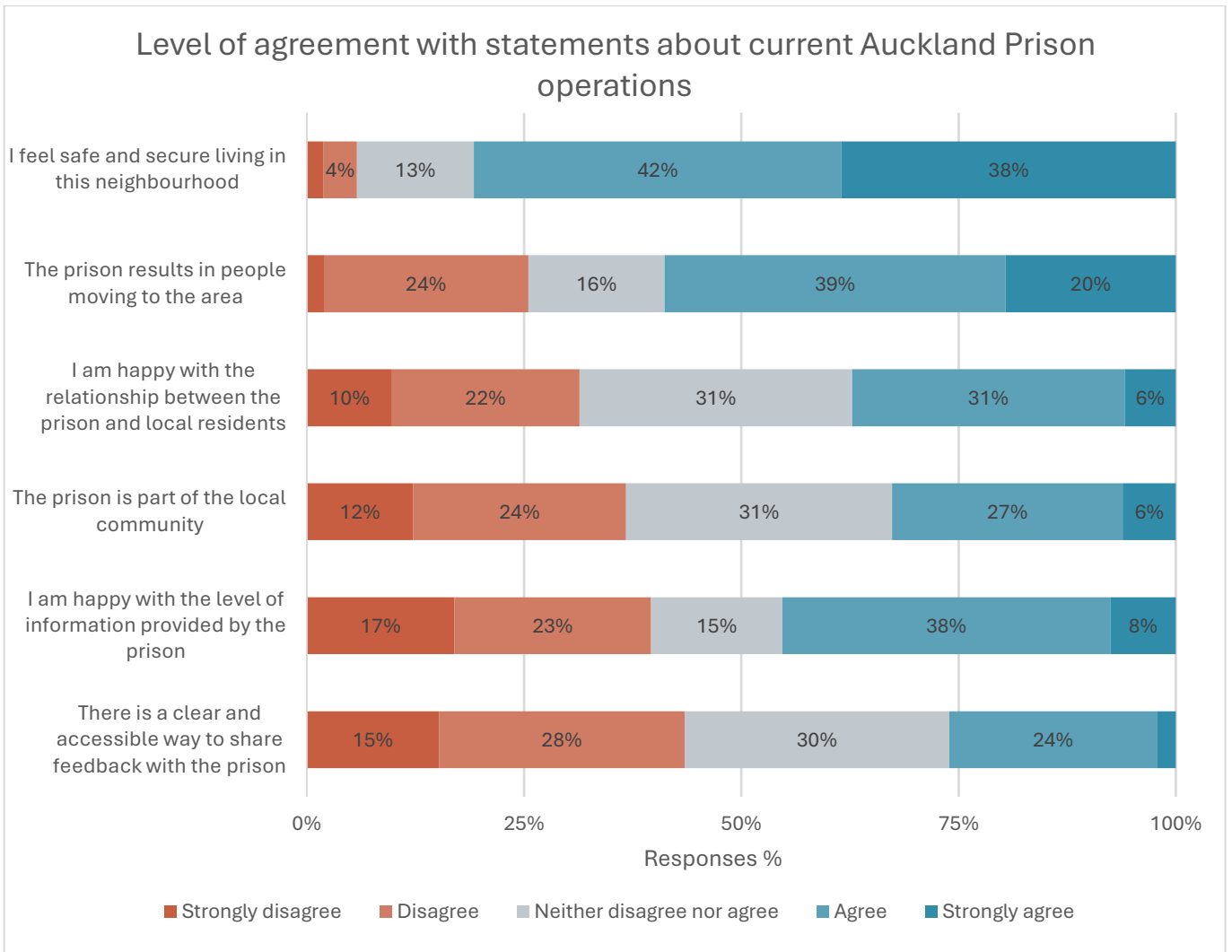


Figure 2: Level of agreement with statements about current Auckland Prison operations

When asked about the impacts caused by the current prison operations (Figure 3), the findings were less positive. Of the ten impact categories, only one had more positive impact responses than negative — the economic benefits created by the prison (such as employment and business revenue). Safety and security was also rated by some respondents as a positive impact (24% rated it positive), though 43% still rated it as a negative impact. Road safety and traffic movements / travel times were reported as having the highest negative impact, with the majority of respondents rating each as having a negative impact (52% and 53% respectively).

When asked if there were any other impacts from the current prison operations, some respondents identified how they feel unsafe during visiting days when patched gang members turn up, as they can be an intimidating presence. A respondent from the Prison Village mentioned how gang members sometimes congregate in the village, doing burnouts on their motorcycles, or sitting at the bus stop drinking and littering.

Respondents were also asked to expand on any significant impacts they identified from the current prison operations. Comments included discussions about the loss of community cohesion due to the presence of the prison, particularly at the Prison Village, where many new residents are short-term tenants from outside the local area. The loss of the community centre (when it was handed back to the prison) was also noted by one commenter as a major loss, as its absence has reduced the number of functions and events.

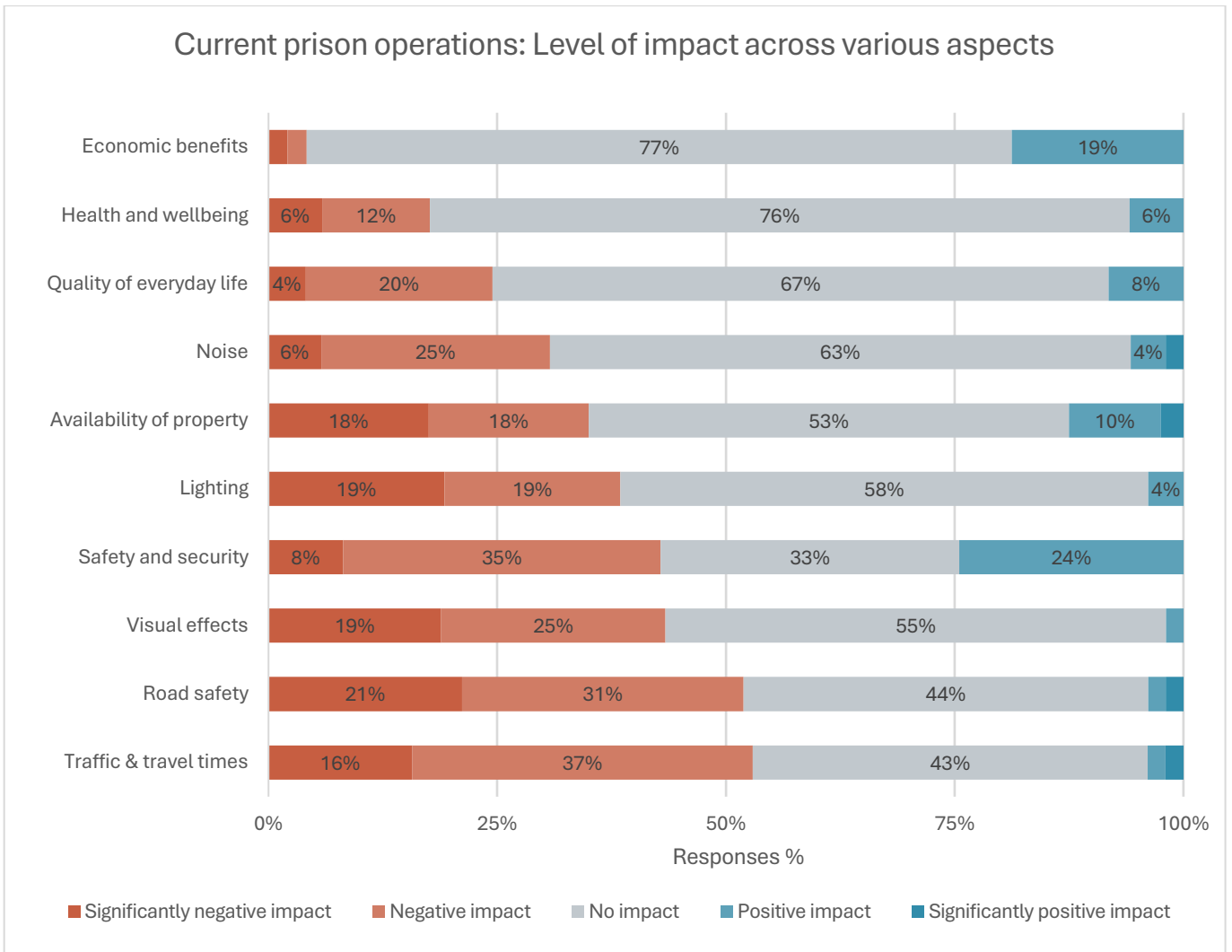


Figure 3: Current prison operations: Level of impact across various aspects

Security, crime, and social impacts were also expanded on, with several comments about antisocial behaviour occurring by visitors to the prison (such as theft from mailboxes and damage to property). A lack of nearby backup staff for emergencies raised concerns about response times and safety. Other commenters discussed how they had witnessed poor behaviour by prison staff, including unsafe driving.

Traffic congestion and speeding are major concerns, especially during staff changeover times and visiting hours. Residents reported unsafe conditions for pedestrians walking along Ridge Road and Pāremoremo Road due to high speeds and increased traffic volumes. One commentator also mentioned how frequent traffic from heavy trucks has been causing damage to the roads.

Lighting, noise, and odour from prison operations was described as intrusive, disrupting the natural environment. This included glare at night, noise from radios in the early hours of the morning, and odours generated from cleaning products. Environmental degradation was noted as a concern, including rubbish left by visitors. Landscaping improvements done several years ago to mitigate views of the prison were also described as no longer effective.

Lastly, one resident in the local area also noted the impact the prison has on property values, with its presence making the area less desirable and therefore reducing the market prices for homes.

Prison expansion construction

Respondents were then asked to anticipate the expected level of impact from construction of the prison expansion (Figure 4). Overall, the construction was anticipated to have a largely negative impact, with the sole exception of lighting, where more people thought it would have a positive impact (20%) than negative (16%).

However, for all other aspects the majority of respondents stated that the construction would have a negative impact, particularly in terms of health and wellbeing (78% negative) and the quality of everyday life (72% negative).

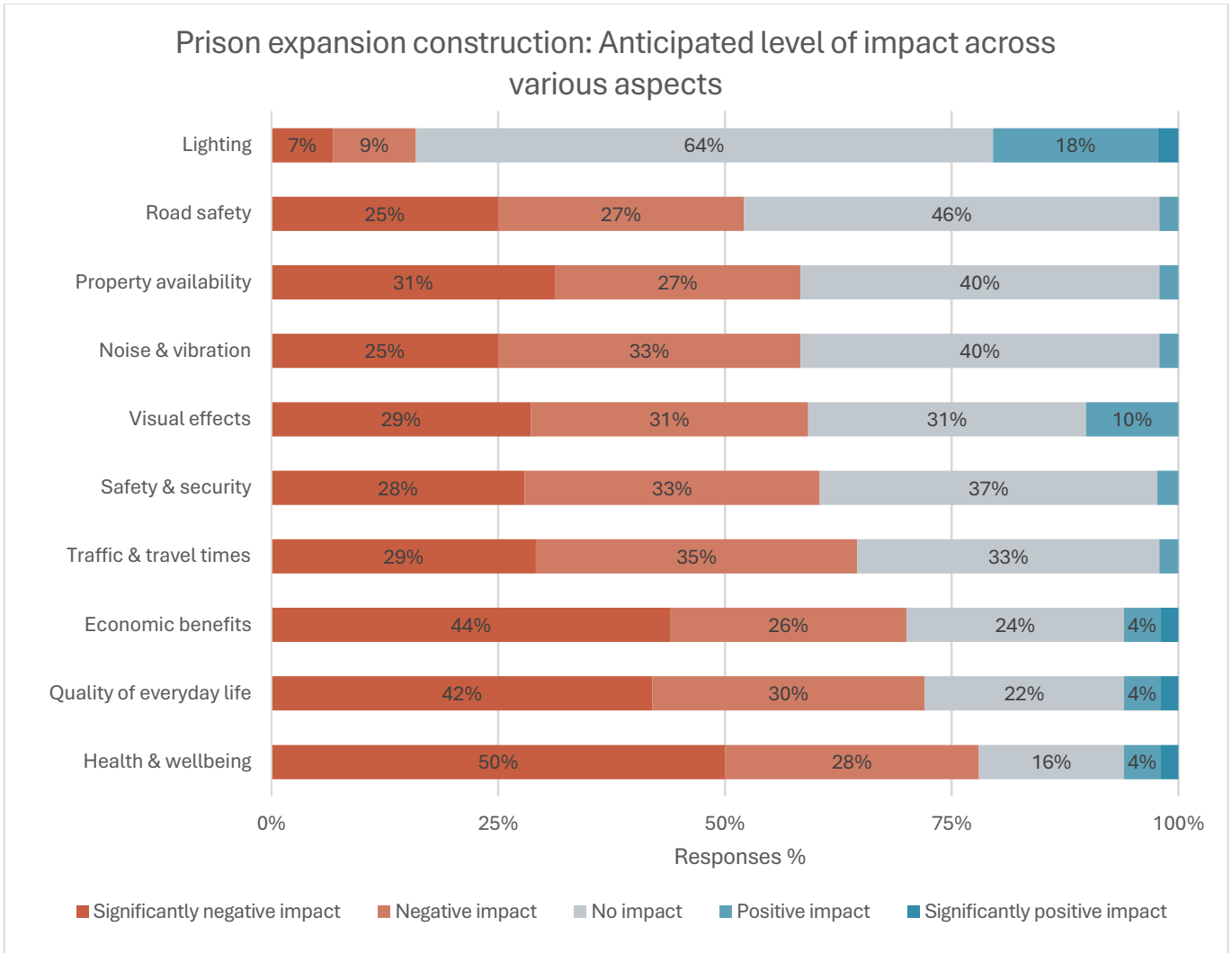


Figure 4: Prison expansion construction: Anticipated level of impact across various aspects

Other impacts anticipated as part of construction of the prison expansion include deterioration of local roads due to increased traffic from heavy construction vehicles, rubbish left by construction crews, and dust generated by construction activities. However, one respondent noted the positive benefits of construction activities, hopeful that it would lead to more houses in the Prison Village being rented out.

When expanding on the significant impacts, respondents noted that the increased traffic would likely cause existing congestion issues to worsen, as well as increase traffic noise (from early morning truck movements, reversing alarms, heavy machinery, and the use of exhaust brakes).

There was also discussion about the potential environmental impacts, with worries about where construction waste would end up, and dust settling on roofs which could end up in water tanks, potentially causing water contamination.

Overall, respondents generally commented that the prison construction would negatively impact their quality of life due to the disruptions caused. However, one commenter did note that they thought the impact would not be significant, as the construction activities would only be temporary.

Future prison operations

Respondents were also asked to anticipate the level of impact caused by the future prison operations (once the construction had been completed, and the prison capacity had increased), shown in Figure 5. Safety and security was the only impact where the response was somewhat mixed, with 18% anticipating a positive impact, and 28% negative. For all other aspects, a majority of respondents expected the impact to be negative — particularly for road safety (76% negative) and noise (69% negative).

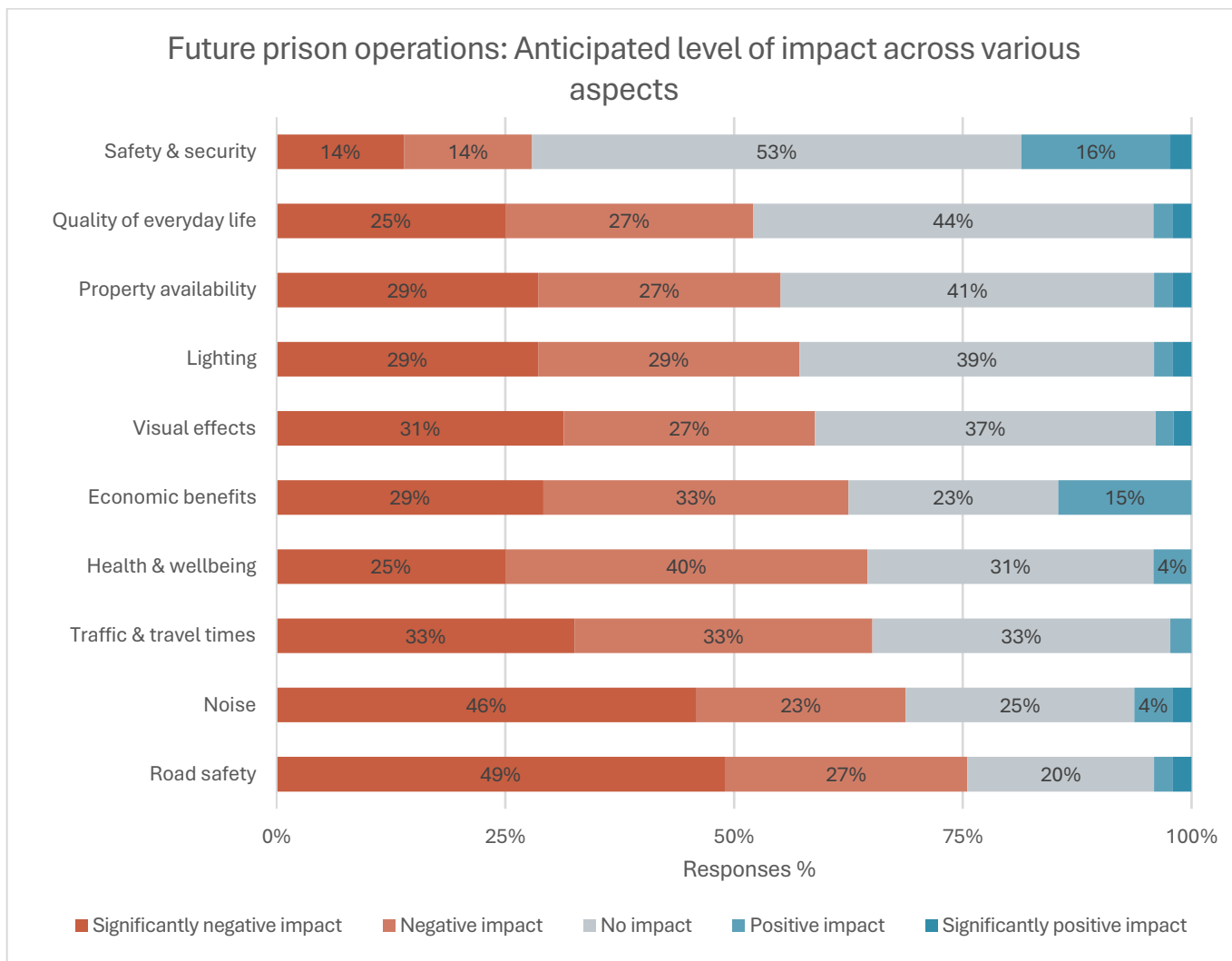


Figure 5: Future prison operations: Anticipated level of impact across various aspects

Other impacts noted as a result of the prison expansion included an increasing numbers of visitors causing antisocial behaviour, further deterioration of local roads due to additional traffic volumes, increasingly unsafe conditions for pedestrians and cyclists, and decreasing house prices.

Expanding on the significant impacts they identified, respondents reiterated concerns around safety, traffic, and the environmental impacts of lighting, noise, and the visual effects of the new prison buildings. However, one respondent pointed out that the majority of residents had moved to the area after the original prison was built, suggesting that expansion was always likely at some point, and therefore residents should not complain about the inevitable.

Respondents were also asked to state their level of agreement with statements about future Auckland Prison operations (Figure 6). Half agreed that the increase in prison capacity will attract more people to the area, while the remainder disagreed (32%) or were undecided. For all other statements, more disagreed than agreed — particularly for the statement that the quality of the environment will be maintained (68% disagree), that the character of the local area will be maintained (65% disagree), and that the increase in prison capacity will create a safer society for all (63% disagree).

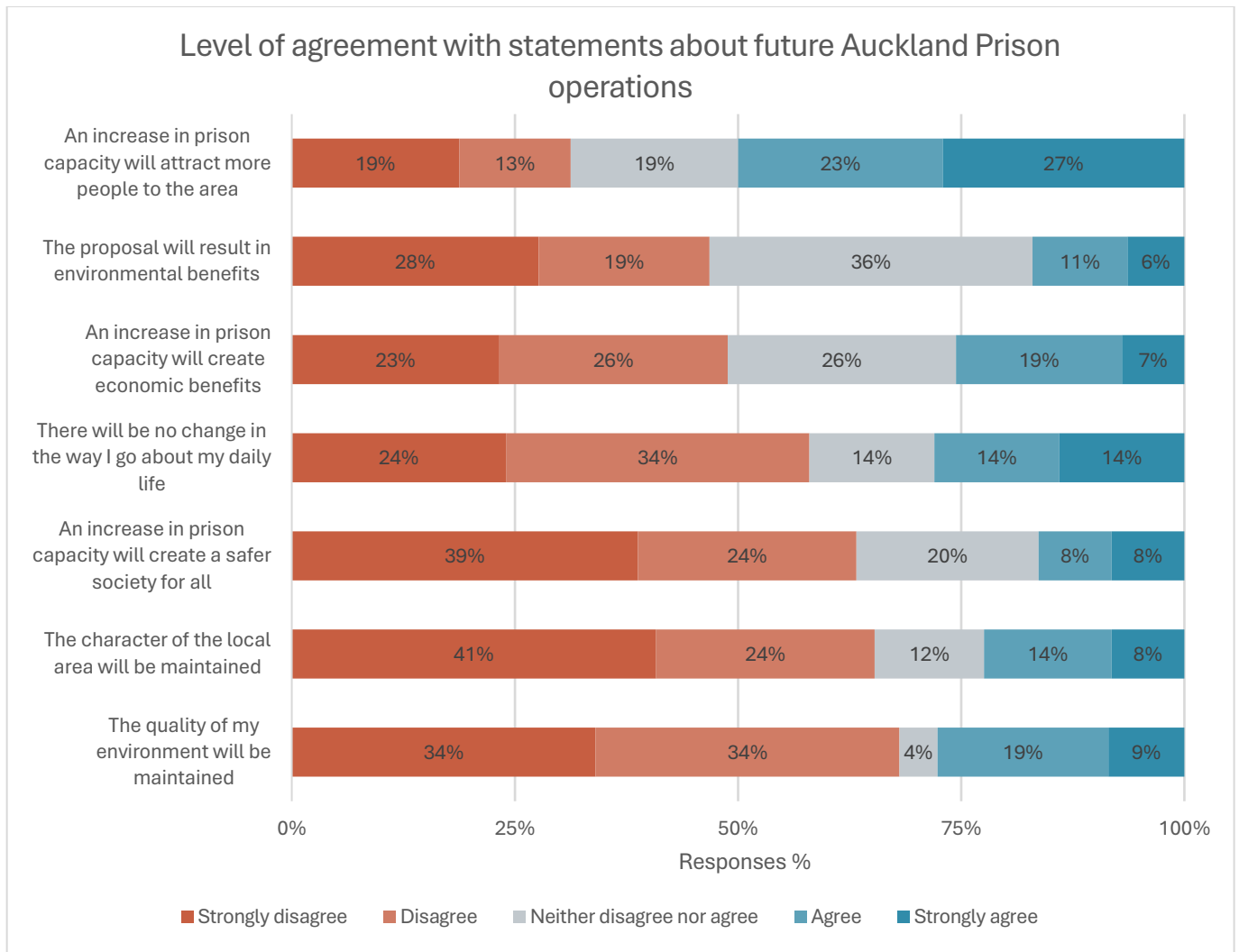


Figure 6: Level of agreement with statements about future Auckland Prison operations

Figure 7 shows respondents' level of agreement with two additional statements about the proposed Auckland Prison expansion. The majority agreed that they understood why an increase in prison capacity is needed (64% agree) but disagreed that they are not concerned about an increase in prison capacity (65% disagree).

Lastly, respondents were asked whether they had any additional comments they would like to share. Several discussed how they felt an increase at Auckland Prison was inappropriate given that the area is no longer remote and rural in character (as it was when the prison was initially built), with some recalling an agreement in previous years that the prison would not be extended. Some commenters said that a new maximum security prison should be built elsewhere in New Zealand instead, while others said that increasing prison capacity in general was not the way to solve crime, and that the focus should instead be on rehabilitation and reducing reoffending.

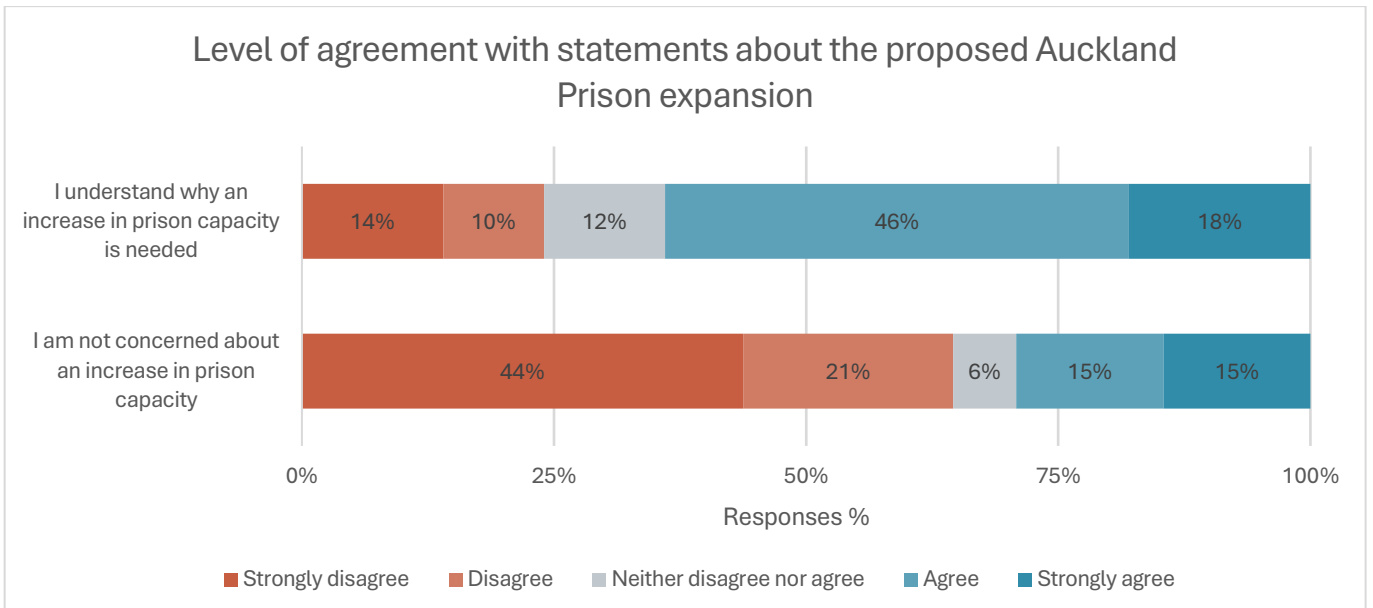


Figure 7: Level of agreement with statements about the proposed Auckland Prison expansion

Some respondents noted the need to ensure that local infrastructure was upgraded to accommodate the expansion and support new residents and visitors to the area. This includes road and intersection upgrades, bus services, water pipes, and fibre broadband. One commenter also noted that it would be good to include better cycling infrastructure as part of transport improvements.

One commenter from the Prison Village expressed concern about what would happen to rentals (and rental pricing) in the village if it was split out from the prison. Others felt they had not been provided enough information to fully understand and assess the proposal.

Key Informant Interviews

Key Informant/s	Summary of Consultation
<p>Corrections General Managers</p>	<p>Community Relationships and Interactions</p> <ul style="list-style-type: none"> — Historically a reasonable relationship with the local community, but this deteriorated during COVID and has only recently been revisited. — Recent consultation included a meeting at Prison Village Cultural Centre and a second meeting on-site which included a tour of the prison facilities. — The prison has established direct contact lines for key stakeholders and maintains protocols for emergency communication. — It is recognised that there is a need to reinstate a system of notification with the local community during significant events. — Success in community consultation means having regular, informed, 2-way meetings with the local community, built on openness and transparency. <p>Community Pathways and Partnerships Team</p> <ul style="list-style-type: none"> — The newly established Community Pathways and Partnerships team is working to strengthen collaboration with public sector agencies, NGO's, iwi and local business to support prisoner reintegration. Noting labour market conditions and the prison's maximum security status present challenges. <p>Community Perceptions and Impact</p> <ul style="list-style-type: none"> — School has raised concerns regarding the prison's influence on student recruitment and misconceptions that school is a "prison school". — Misconceptions about the prison and its population, which affect community attitudes. — Increase demand for emergency services and vulnerability to weather events noted as potential social implications. — Positive effects including employment opportunities and increased demand for healthcare professional were noted.
<p>New Zealand Police</p>	<ul style="list-style-type: none"> — NZ Police identified the importance of the community feeling safe, emphasising the need to maintain trust and confidence. Maintaining the reputation of the prison as a high maximum security facility was crucial. — Visual improvements (landscaping / attractive roadside appearance) were suggested to support the community's sense of safety and connection — There are no plans for self-care facilities, which was welcomed by NZ Police due to management challenges associated with public access. — NZ Police confirmed that complaints involving prison visitors are rare, however police resources may be impacted by increased visitor numbers. Collaboration between Police and Corrections is valued. — NZ Police flagged the potential for an influx of individuals connected to prisoners. Concerns were also raised about contraband and loitering near Sanders Reserve – a popular area for families and children. — Incident management and emergency response processes were discussed, with Corrections staff receiving effective training from NZ Police. — The establishment of a Community Liaison Group to foster stakeholder consultation and information was supported by NZ Police, and they would be keen to participate in this forum.
<p>Ridgeview School</p>	<ul style="list-style-type: none"> — Ridgeview School is a small, community-oriented school with 40-60 students, experiencing a gradual decline in enrolments over the past 5 years due to demographic changes and a transient local population.

	<ul style="list-style-type: none"> — The school maintains a strong sense of community, with recent efforts to increase local consultation through events and initiatives such as <i>Pātaka Kai</i> (community pantry) and gardening club. — There is minimal day-to-day interaction between the school and the adjacent prison. Current relations are limited but positive, open lines of communication. — The proposed prison expansion is not anticipated to impact on the school's operation or enrolments. Few families associated with the prison send their children to the school. — The main concern relates to road safety for students (especially those using the bus stop near the school) and potential short-term construction traffic, both of which are considered manageable. — Addressing community perceptions about the school – such as confusion that the school is related to the prison due to signage – was identified as an area of improvement, with suggestions for Correction to remove or update certain signs.
Local Estate Agents	<p>Estate Agent 1:</p> <ul style="list-style-type: none"> — The prison is a longstanding part of the local landscape, having been there longer than 95% of the residents. Most residents are accepting of its presence, and the community have benefited from its existence i.e. Pāremoremo was the first rural area to get fibre internet. — The relationship between the prison and the community has historically been reciprocal, with the prison responding to community needs and supporting local initiatives. — Buyers attracted to the rural lifestyle, proximity to city, value for money, reserves and open space. Permissive planning rules allow for minor dwellings for rental income, — It is not anticipated that the proposed prison expansion will negatively impact property values, and hopefully it will lead to improved infrastructure maintenance, especially following recent weather events. — The rental market benefits from the prison's presence, with many staff renting locally and demand is likely to increase with the proposed increase in staff requirements. Prison-owned properties (in the Prison Village) require significant upgrade which would enhance the social environment. — Average rent in the Prison Village is notably lower (~\$450/week) compared with the wider comment (~\$700/week), reflecting the difference in property condition and market dynamics <p>Estate Agent 2:</p> <ul style="list-style-type: none"> — The property market in Pāremoremo and surrounding areas is influenced by the proximity to Albany (a central hub), with amenities within a 10-minute drive making the area attractive along with the lifestyle sized properties. — The prison's presence does deter some buyers (typically 3 out of 10 buyers), and it does hold the property value back somewhat. — Main community impacts from the prison or its potential expansion are physical aspects – such as visibility, light pollution and increased traffic – rather than the number of prisoners housed there. The capacity of the prison is rarely a concern for buyers or residents. — The community is stable, with low turnover and is characterised by long term residents who are accustomed to the prison's presence. There is little evidence that the number of prisoners affects community sentiment.

	<ul style="list-style-type: none"> — Increased planting and landscaping would reduce the visibility of the prison, especially if expansion brings more buildings or lighting closer to residential boundaries.
Local Community	<p>Pāremoremo Ratepayers and Residents’ Association (PRRA):</p> <ul style="list-style-type: none"> — The recent PRRA survey received 183 responses, highlighting active community consultation. — The background and structure of the PRRA was outlined, including membership, relationship with Sustainable Pāremoremo, and its focus on infrastructure and council matters. — The Pāremoremo community comprises four main groups: long-term residents, returning residents, lifestyle focused newcomers, and Prison Village residents. The Prison Village, originally build for staff, now houses a mix of tenants and is characterised by affordable, short-term accommodation. — The Prison Village has changed significantly from staff-only housing to market rentals; there has been a decline in community amenities and events that once fostered social cohesion within the village and the community. — The school played a key role in the past, bringing the community together. Over the past 5-10 years the role of the school as diluted. The ‘Prison Officers Club’ was well used up until ~10 years ago. — The local school, under new leadership, is revitalising its role as a community centre, collaborating with Sustainable Pāremoremo on initiatives like food gardens and the Kai Rakau heritage apple project, which aims to reconnect residents and preserve local history. — The relationship between the prison and the community has deteriorated due to past incidents, centralisation of decision making, and the loss of regular community channels, leading to a breakdown in trust and collaboration. — Key community concerns regarding the proposal include the adequacy of local infrastructure, lack of transparent information, limited consultation, and fears that community input will not be genuinely considered. PRRA’s intends to submit an opinion on the fast-track process to ensure proper consultation is not bypassed. <p>Sustainable Pāremoremo:</p> <ul style="list-style-type: none"> — Sustainable Pāremoremo focuses on core sustainable initiatives – pest and weed control - as well as social cohesion, bringing community together. Use programmes for social and community connection. Participation is high among long term residents, but is it challenging to engage newer residents, particularly those in the Prison Village. Recent events, such as the Kai Rakau Food Forest planting, have attracted a more diverse turnout. — The loss of the Workingmen’s Club as a community hub has weakened social ties. Sanders House, the current venue, is too small for larger events, limiting community consultation. There is interest in regaining access to the Workingmen’s Club, but the facility requires significant renovation to meet health and safety standards. — People are attracted to the Pāremoremo area because they value privacy of the rural-lifestyle community, and harbour views. Residents tend to be environmentally inclined as well. Community is diverse, different lot sizes and

lifestyles. Because of this lifestyle, self-sufficient and relatively connected. The majority of the Sustainable Pāremoremo members are from Attwood Rd area, smaller lifestyle lot areas.

- The local school, once a focal point for community connection, has seen declining enrolment due to perceptions of educational quality and increased gentrification. Students at the school mostly from Prison Village. Socio-economic status of village distinct from rest of community.
- The connection between the community and the prison has diminished over the past decade, especially since the community stopped using the Workingmen's Club. Recent outreach from the prison has been met with some scepticism.
- Key community concerns relating to the proposal include the impact of construction (height of new buildings, lighting, visual pollution), increased traffic, and sewage capacity. There is concern about the adequacy of infrastructure to support the prison expansion.
- There isn't a relationship between the community and prison. Most of the community are probably okay with this. The community is concerned about the loss of Corrections delegation over the Prison Village.

Community Representative:

- Within Pāremoremo, the Prison Village is a very different demographic to the rest of community. The village consists of poorer tenants that are vetted and have strict tenancy controls. The wider community consists of larger owner-occupied lifestyle properties with an ageing population.
- Community events are well attended. There is a desire for great community connection. The school used to be a community hub, historically residents in the local area sent their children there, but now the demographics have changed, and the school roll is declining.
- Some Prison Village residents value the strict rules, and some moved there for housing security with a public landlord. Families with children are more connected compared to the rest of the community as a result of the school.
- The prison has been unresponsive to community consultation efforts, with limited involvement in local events and challenges with communication. The community wants more transparency, regular information sharing, and visible participation from prison leadership.
- There is a need for a community strategy for the community. GM's change frequently, hard to maintain community relationships. A community liaison officer was recommended - responsible for developing relationships with the community, a point of contact, engaged with the community, build trust, host open sessions, share information, attend community events, part of community social media groups, etc.
- There is an opportunity for the prison to collaborate on the emergency preparedness initiative. The Workingmen's Club was identified as a resource that could be used as a community hub in the event of an emergency because it is central, but this is poorly maintained.
- Community concerns relating to the proposal include increased traffic, infrastructure strain, property values, and fast-track nature of the expansion

which has led to uncertainty and a lack of trust. Residents are particularly worried about the adequacy of consultation.

- The school, mainly attended by village residents, is working to improve its perception and community involvement. There are concerns regarding traffic, particularly relating to the school given there is a footpath on only one side. There is no pedestrian crossing, community needs more linkages to make key community places more accessible.

Upper Harbour Local Board (UHLB):

- The Pāremoremo community is close-knit, valuing its rural environment, green spaces, and strong neighbourly ties. There have been recent efforts to further strengthen community consultation through local events and initiatives.
- The relationship between the Prison and the local community is 'non-existent', with previous collaboration having faced due to increased bureaucracy, health and safety concerns, and changes in prison management.
- The prison is seen as a visual blight but does not significantly affect daily life for most residents, aside from the occasional negative incident involving visitors. There are ongoing concerns relating to sewage and odour.
- There is little evidence that the prison contributes to the local economy, with uncertainty about whether local businesses and residents benefit from employment or service contracts related to the facility.
- Concerns relating to the proposal include anticipated increased traffic when congestion is already an issue, public transport, potential negative impacts on property values and community wellbeing, and fears of increased presence of prisoner families or associates moving into the village.
- The consultation process for the proposal has been inadequate, with the UHLB receiving minimal communication and no meaningful opportunity to present community concerns or receive feedback on mitigation plans.
- A sense of 'broken trust' has highlights, as the community was promised the prison would not expand, and the current proposal is seen as a breach of trust and democratic process, especially given the use of the fast-track consent mechanism.

APPENDIX E: IMPACT ASSESSMENT MATRIX

IMPACT	PHASE	PRE-MITIGATION						POST-MITIGATION					
		EXTENT	DURATION	MAGNITUDE	CONSEQUENCE	LIKELIHOOD	SIGNIFICANCE	EXTENT	DURATION	MAGNITUDE	CONSEQUENCE	LIKELIHOOD	SIGNIFICANCE
Reduced accessibility due to increased traffic volumes that have the potential to cause delays, congestion and an impact on individuals' daily movements and behaviours	Construction	Local	Temporary – short term	Moderate	Moderate	Likely	High (negative)	Local	Temporary – short term	Low (few affected)	Minor	Possible	Moderate (negative)
	Operation	Local	Permanent	High (many affected)	Major	Almost certain	Extreme (negative)	Local	Permanent	Low (few affected)	Insignificant	Unlikely	Low (negative)
Reduced road safety for road users, in particularly pedestrians due to heavy vehicles, traffic volume and speed.	Construction	Site and surrounds / Local	Temporary – short term	Low (few affected)	Minor	Possible	Moderate (negative)	Local / site and surrounds	Temporary – short term	Low (few affected)	Minor	Unlikely	Low (negative)
	Operation	Site and surrounds / Local	Permanent	Low (few affected)	Moderate	Possible	High (negative)	Local / site and surrounds	Permanent	Low (few affected)	Minor	Unlikely	Low (negative)
Reduced community safety and security as result of an increased number of prison visitors into the local area (i.e. increased risk of undesirable behaviours)	Operation	Site and surrounds	Permanent	Low (few affected)	Minor	Possible	Moderate (negative)	Site and surrounds	Permanent	Low (few affected)	Minor	Unlikely	Low (negative)
Social upliftment from employment, benefits for businesses and the economy	Construction	Local, Regional and National	Temporary – short term	High (many affected)	Major	Likely	Extreme (positive)	No mitigation required, however prioritising local hiring and use of local businesses provides the opportunity to enhance local benefits.					Extreme (positive)
	Operation	Local, Regional and National	Permanent	High (many affected)	Moderate	Likely	High (positive)	No mitigation required, however prioritising local hiring and use of local businesses provides the opportunity to enhance local benefits.					High (positive)
Reduced community cohesion and stability i.e. the extent to which the prison is part of the local community and the stability of the relationship between the prison and the local community	Planning, Construction and Operation	Local	Medium term	Low to Moderate	Minor	Possible	Moderate (negative)	Local	Permanent	Low	Minor	Unlikely	Low (negative)
Population influx and the associated increased demand for housing as a result of increased staff and service providers required to support an increased capacity at the prison	Operation	Local area	Short term	Low (few affected)	Insignificant	Possible	Low (negative)	No mitigation required, movement into the area will be dependent on availability of accommodation.					Low (negative)

Change in sense of place and character of the local area	Construction	Site and surrounds / Local	Temporary – short term	Low (few affected)	Minor	Possible	Moderate (negative)	Site and surrounds / Local	Temporary – short term	Low (few affected)	Minor	Possible	Moderate (negative)
	Operation	Site and surrounds / Local	Permanent	Low (few affected)	Insignificant	Unlikely	Low (negative)	Site and surrounds / Local	Permanent	Low (few affected)	Insignificant	Unlikely	Low (negative)
Increased demand for community facilities and infrastructure	Operation	Local	Permanent	Low (few affected)	Insignificant	Unlikely	Low (negative)	Local	Permanent	Moderate	Minor	Possible	Low (positive)
Change in the quality of the environment	Construction, and operation	Site and surrounds	Temporary – Permanent	Low (few affected)	Minor	Unlikely	Low (negative)	Site and surrounds	Temporary – Permanent	Low (few affected)	Minor	Unlikely	Low (negative)
Reduced wellbeing due to anxiety and/or a change in the quality of the environment	Planning, Construction and Operation	Local	Medium term	Low (few affected)	Minor	Possible	Moderate (negative)	Local	Medium term	Low (few affected)	Minor	Unlikely	Low (negative)

