

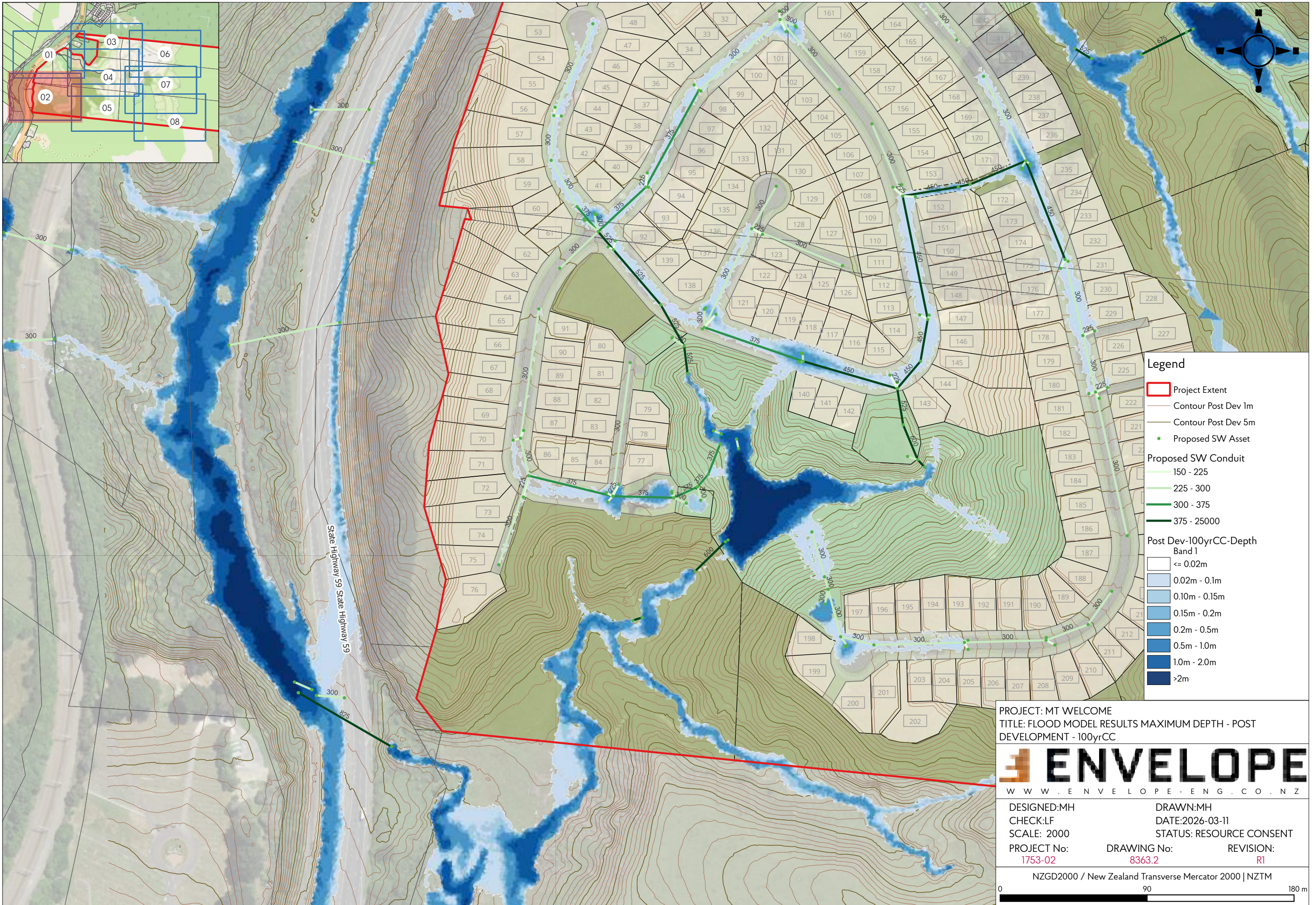
- Legend**
- Project Extent
 - Contour Post Dev 1m
 - Contour Post Dev 5m
 - Proposed SW Asset
- Proposed SW Conduit**
- 150 - 225
 - 225 - 300
 - 300 - 375
 - 375 - 25000
- Post Dev-100yrCC-Depth Band 1**
- <= 0.02m
 - 0.02m - 0.1m
 - 0.10m - 0.15m
 - 0.15m - 0.2m
 - 0.2m - 0.5m
 - 0.5m - 1.0m
 - 1.0m - 2.0m
 - >2m

PROJECT: MT WELCOME
 TITLE: FLOOD MODEL RESULTS MAXIMUM DEPTH - POST DEVELOPMENT - 100yrCC



DESIGNED:MH	DRAWN:MH
CHECK:LF	DATE:2026-03-11
SCALE: 2000	STATUS: RESOURCE CONSENT
PROJECT No: 1753-02	DRAWING No: 8363.1
	REVISION: R1

NZGD2000 / New Zealand Transverse Mercator 2000 | NZTM



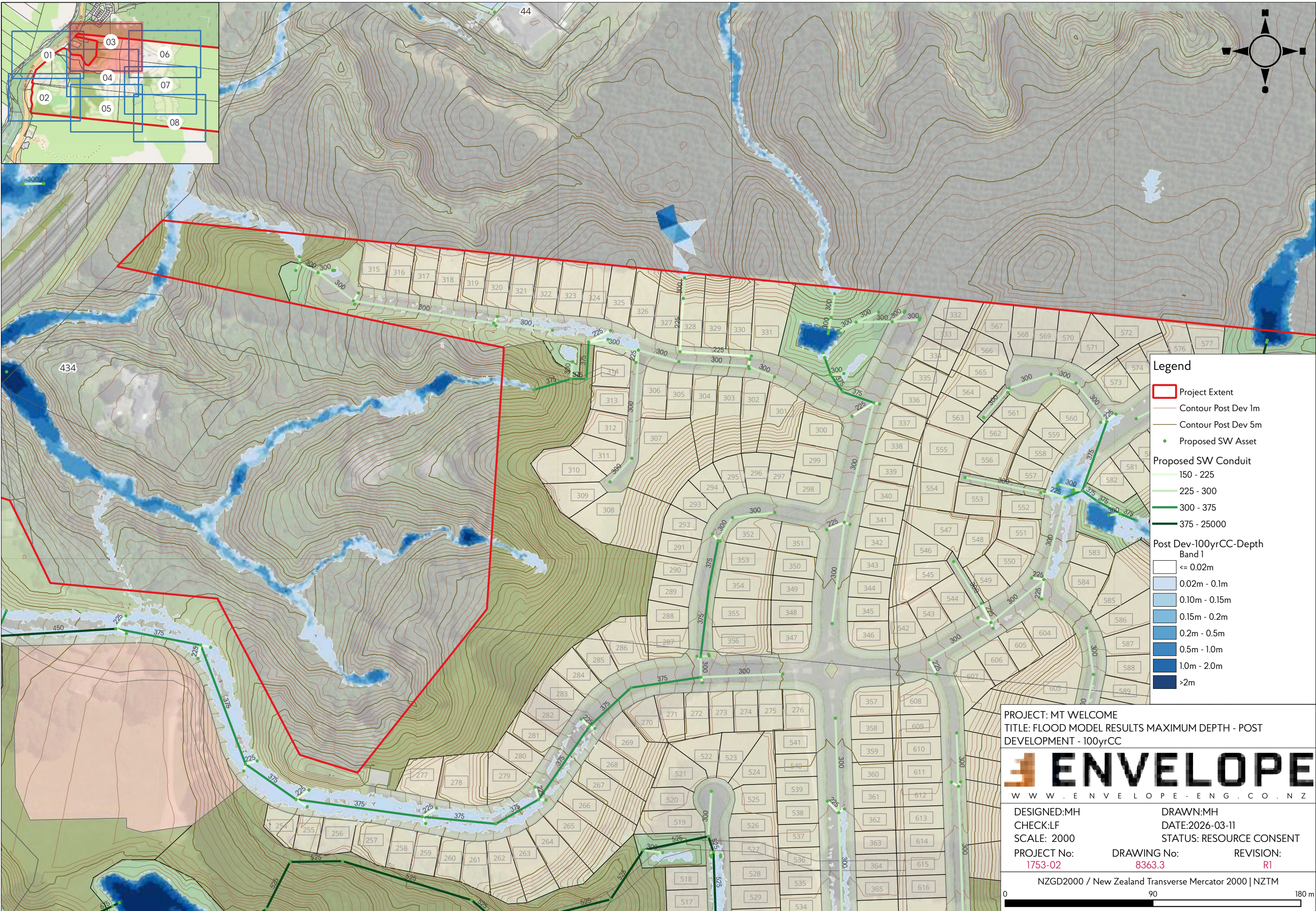
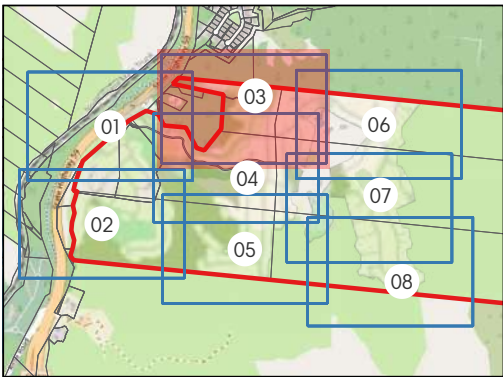
- Legend**
- Project Extent
 - Contour Post Dev 1m
 - Contour Post Dev 5m
 - Proposed SW Asset
- Proposed SW Conduit**
- 150 - 225
 - 225 - 300
 - 300 - 375
 - 375 - 25000
- Post Dev-100yrCC-Depth Band 1**
- <= 0.02m
 - 0.02m - 0.1m
 - 0.10m - 0.15m
 - 0.15m - 0.2m
 - 0.2m - 0.5m
 - 0.5m - 1.0m
 - 1.0m - 2.0m
 - >2m

PROJECT: MT WELCOME
 TITLE: FLOOD MODEL RESULTS MAXIMUM DEPTH - POST DEVELOPMENT - 100yrCC



DESIGNED:MH	DRAWN:MH
CHECK:LF	DATE:2026-03-11
SCALE: 2000	STATUS: RESOURCE CONSENT
PROJECT No: 1753-02	DRAWING No: 8363.2
	REVISION: R1

NZGD2000 / New Zealand Transverse Mercator 2000 | NZTM
 0 90 180 m



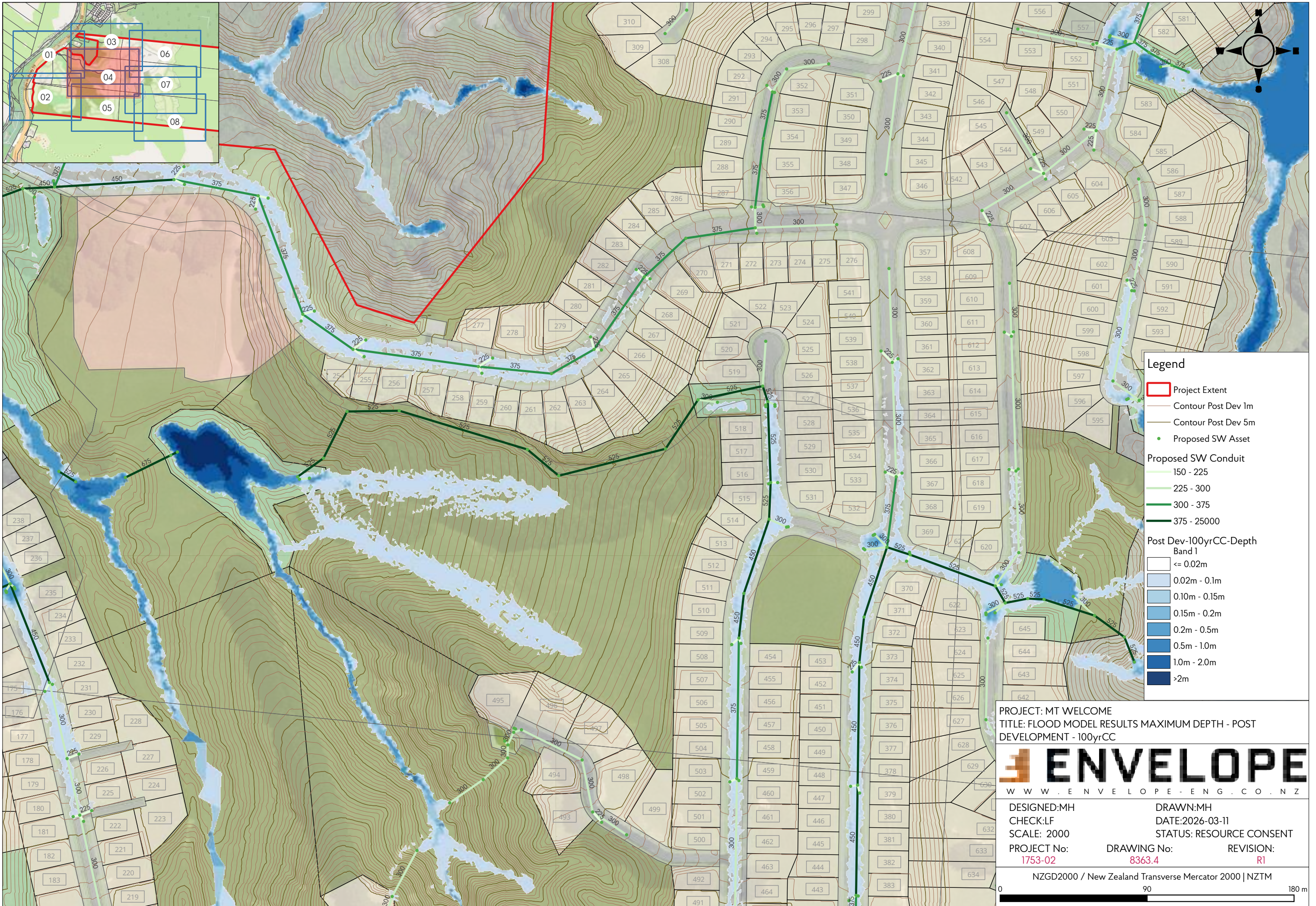
- Legend**
- Project Extent
 - Contour Post Dev 1m
 - Contour Post Dev 5m
 - Proposed SW Asset
- Proposed SW Conduit**
- 150 - 225
 - 225 - 300
 - 300 - 375
 - 375 - 25000
- Post Dev-100yrCC-Depth Band 1**
- <= 0.02m
 - 0.02m - 0.1m
 - 0.10m - 0.15m
 - 0.15m - 0.2m
 - 0.2m - 0.5m
 - 0.5m - 1.0m
 - 1.0m - 2.0m
 - >2m

PROJECT: MT WELCOME
 TITLE: FLOOD MODEL RESULTS MAXIMUM DEPTH - POST DEVELOPMENT - 100yrCC



DESIGNED:MH	DRAWN:MH	
CHECK:LF	DATE:2026-03-11	
SCALE: 2000	STATUS: RESOURCE CONSENT	
PROJECT No: 1753-02	DRAWING No: 8363.3	REVISION: R1

NZGD2000 / New Zealand Transverse Mercator 2000 | NZTM



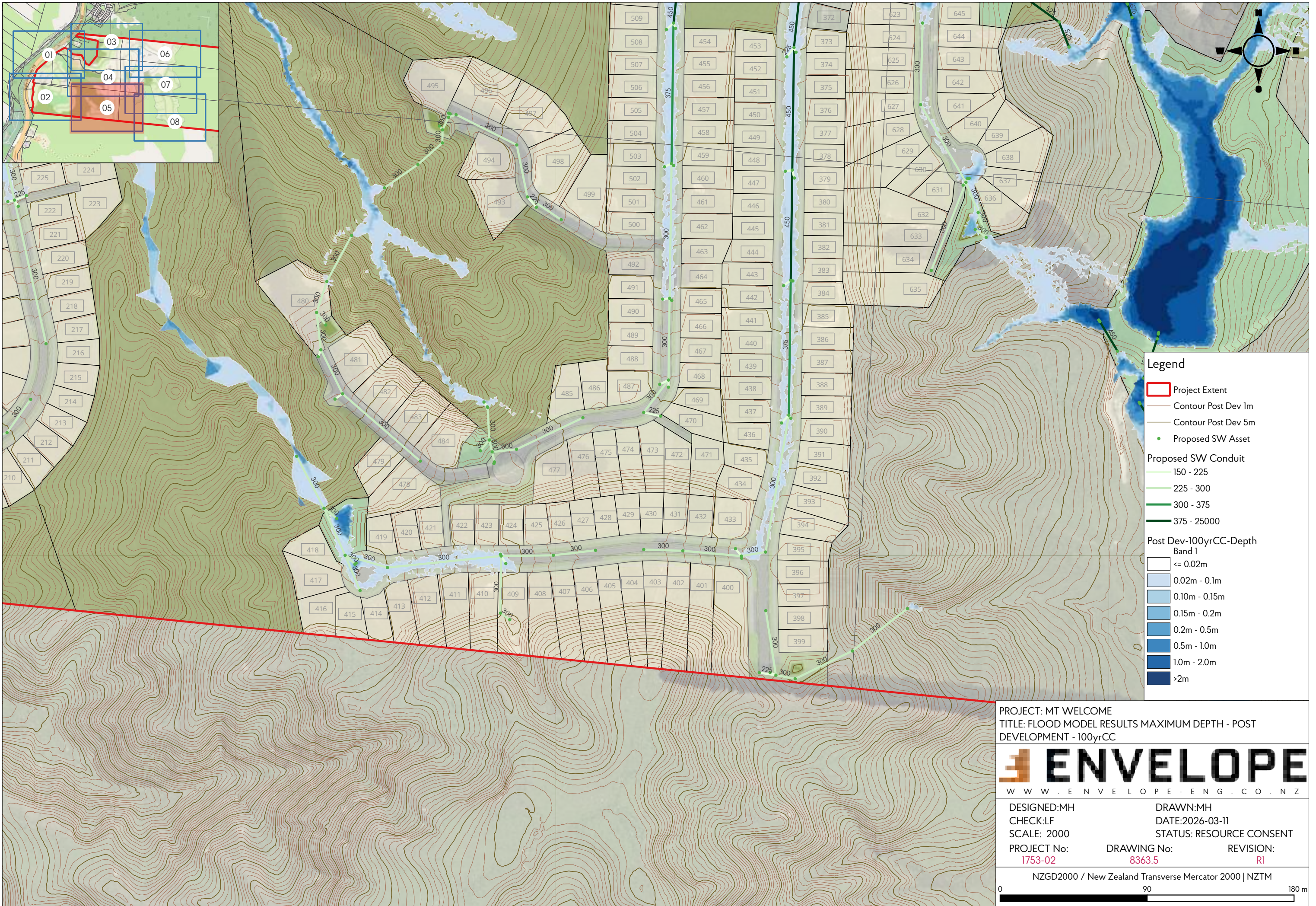
- Legend**
- Project Extent
 - Contour Post Dev 1m
 - Contour Post Dev 5m
 - Proposed SW Asset
- Proposed SW Conduit**
- 150 - 225
 - 225 - 300
 - 300 - 375
 - 375 - 25000
- Post Dev-100yrCC-Depth Band 1**
- <= 0.02m
 - 0.02m - 0.1m
 - 0.10m - 0.15m
 - 0.15m - 0.2m
 - 0.2m - 0.5m
 - 0.5m - 1.0m
 - 1.0m - 2.0m
 - >2m

PROJECT: MT WELCOME
 TITLE: FLOOD MODEL RESULTS MAXIMUM DEPTH - POST DEVELOPMENT - 100yrCC



DESIGNED:MH	DRAWN:MH
CHECK:LF	DATE:2026-03-11
SCALE: 2000	STATUS: RESOURCE CONSENT
PROJECT No: 1753-02	DRAWING No: 8363.4
	REVISION: R1

NZGD2000 / New Zealand Transverse Mercator 2000 | NZTM
 0 90 180m



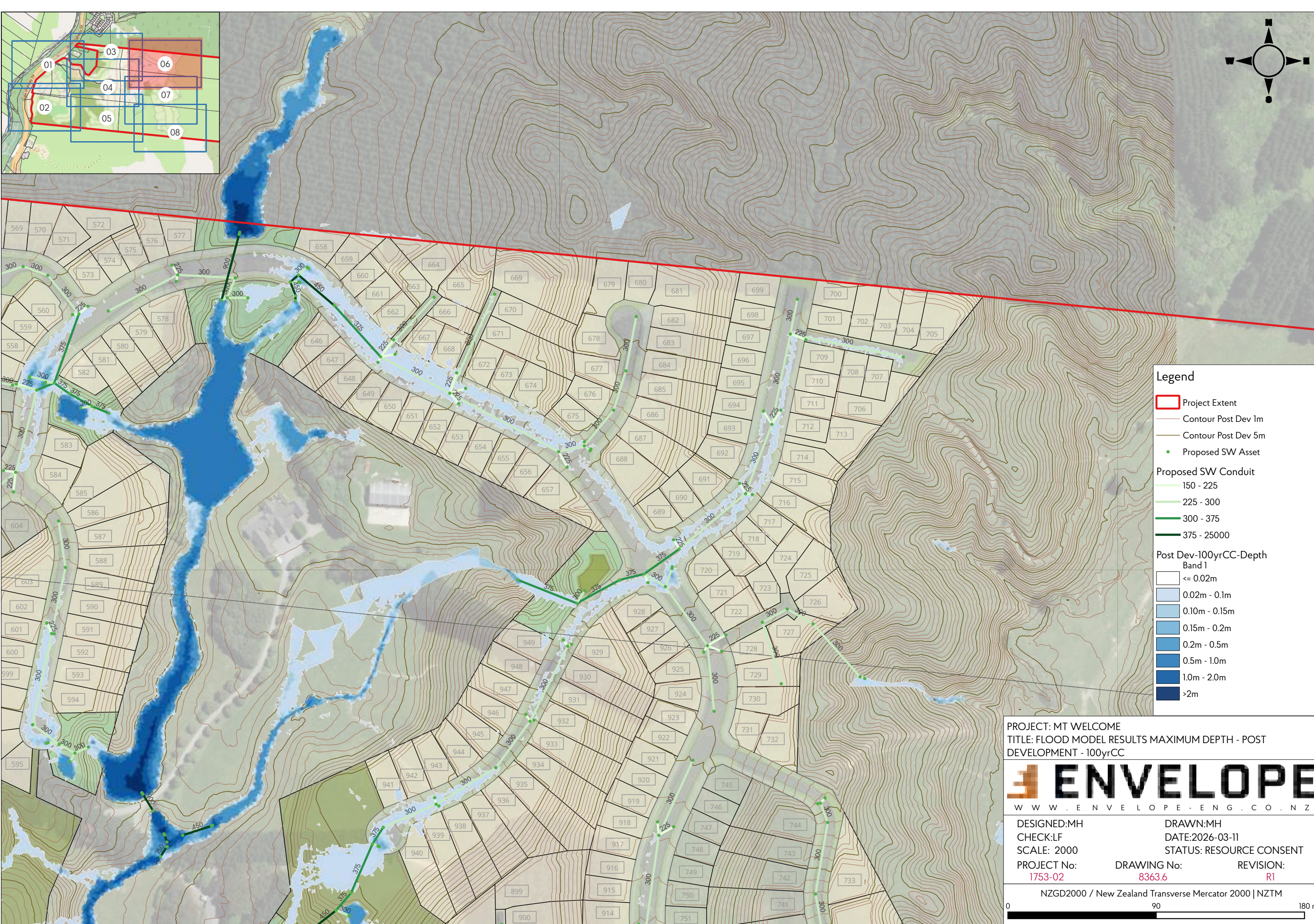
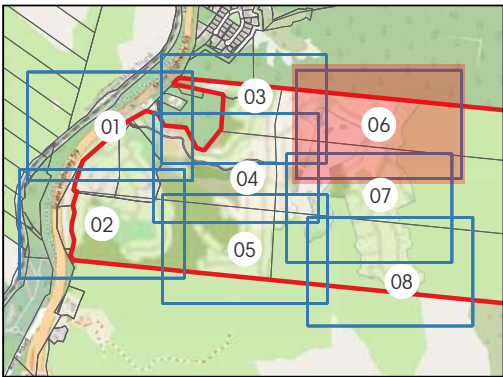
- Legend**
- Project Extent
 - Contour Post Dev 1m
 - Contour Post Dev 5m
 - Proposed SW Asset
- Proposed SW Conduit**
- 150 - 225
 - 225 - 300
 - 300 - 375
 - 375 - 25000
- Post Dev-100yrCC-Depth Band 1**
- <= 0.02m
 - 0.02m - 0.1m
 - 0.10m - 0.15m
 - 0.15m - 0.2m
 - 0.2m - 0.5m
 - 0.5m - 1.0m
 - 1.0m - 2.0m
 - >2m

PROJECT: MT WELCOME
 TITLE: FLOOD MODEL RESULTS MAXIMUM DEPTH - POST DEVELOPMENT - 100yrCC



DESIGNED:MH	DRAWN:MH	
CHECK:LF	DATE:2026-03-11	
SCALE: 2000	STATUS: RESOURCE CONSENT	
PROJECT No: 1753-02	DRAWING No: 8363.5	REVISION: R1

NZGD2000 / New Zealand Transverse Mercator 2000 | NZTM
 0 90 180 m



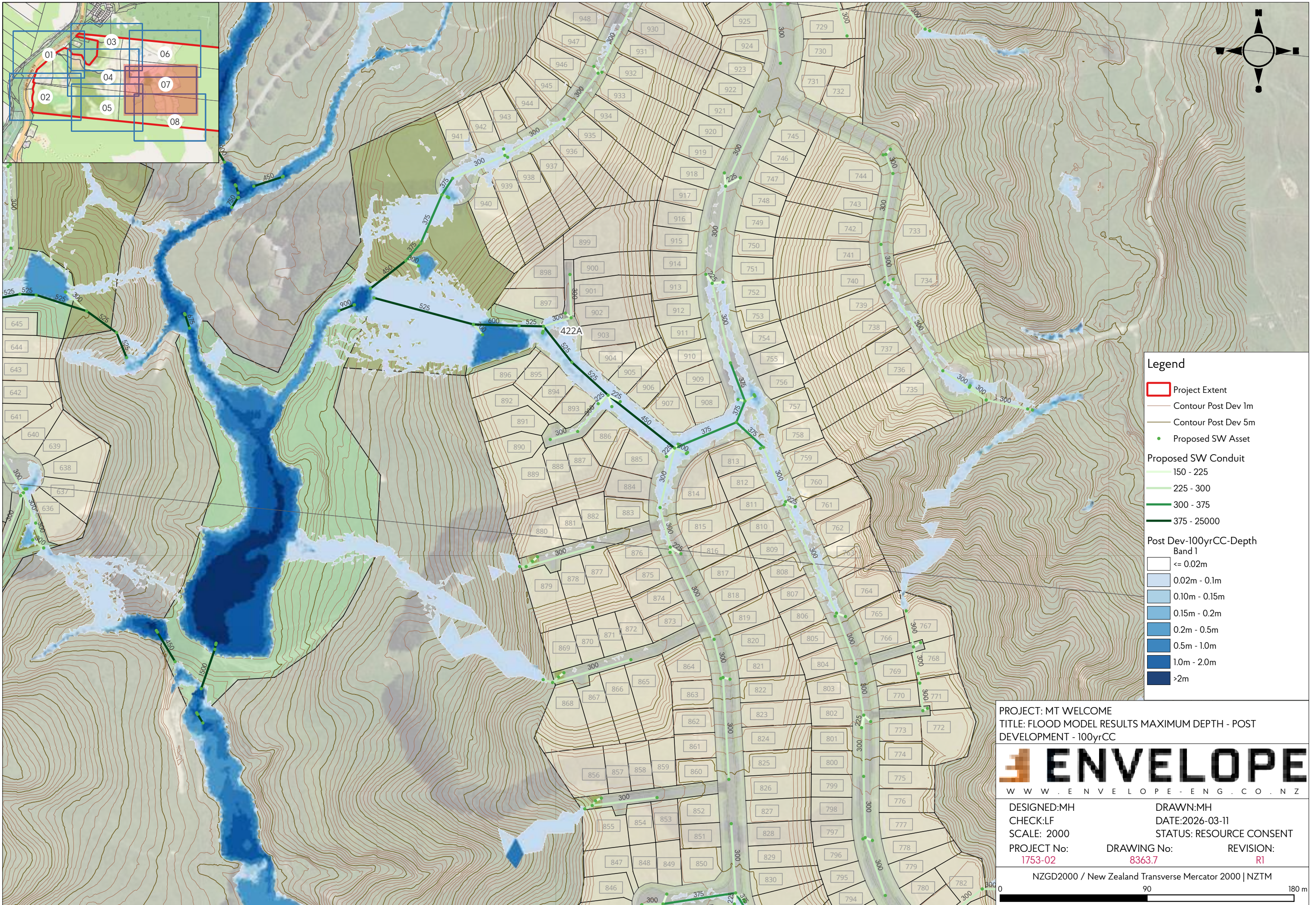
- Legend**
- Project Extent
 - Contour Post Dev 1m
 - Contour Post Dev 5m
 - Proposed SW Asset
- Proposed SW Conduit**
- 150 - 225
 - 225 - 300
 - 300 - 375
 - 375 - 25000
- Post Dev-100yrCC-Depth Band 1**
- <= 0.02m
 - 0.02m - 0.1m
 - 0.10m - 0.15m
 - 0.15m - 0.2m
 - 0.2m - 0.5m
 - 0.5m - 1.0m
 - 1.0m - 2.0m
 - >2m

PROJECT: MT WELCOME
 TITLE: FLOOD MODEL RESULTS MAXIMUM DEPTH - POST DEVELOPMENT - 100yrCC



DESIGNED:MH	DRAWN:MH
CHECK:LF	DATE:2026-03-11
SCALE: 2000	STATUS: RESOURCE CONSENT
PROJECT No: 1753-02	DRAWING No: 8363.6
	REVISION: R1

NZGD2000 / New Zealand Transverse Mercator 2000 | NZTM



- Legend**
- Project Extent
 - Contour Post Dev 1m
 - Contour Post Dev 5m
 - Proposed SW Asset
- Proposed SW Conduit**
- 150 - 225
 - 225 - 300
 - 300 - 375
 - 375 - 25000
- Post Dev-100yrCC-Depth Band 1**
- <= 0.02m
 - 0.02m - 0.1m
 - 0.10m - 0.15m
 - 0.15m - 0.2m
 - 0.2m - 0.5m
 - 0.5m - 1.0m
 - 1.0m - 2.0m
 - >2m

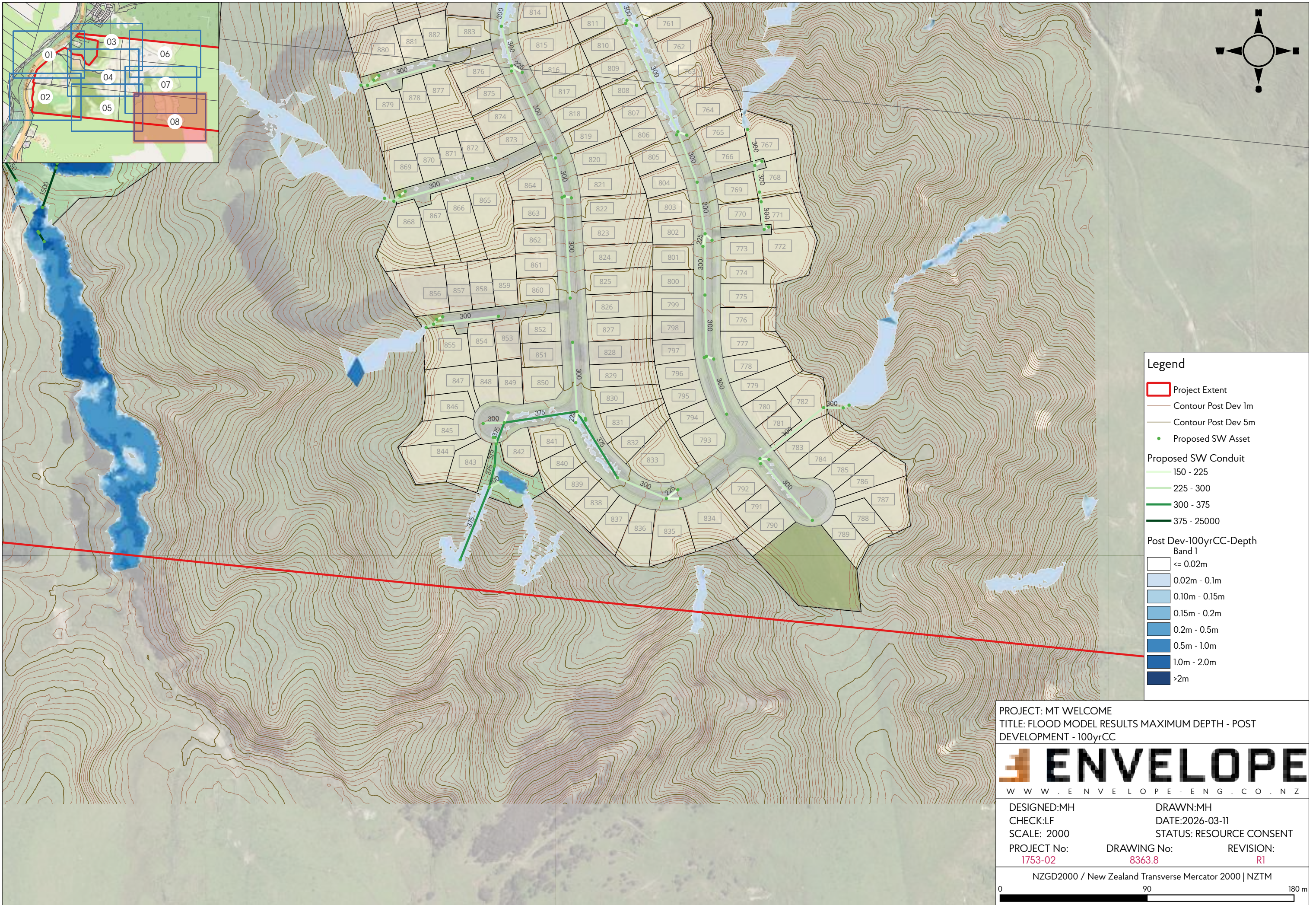
PROJECT: MT WELCOME
 TITLE: FLOOD MODEL RESULTS MAXIMUM DEPTH - POST DEVELOPMENT - 100yrCC

ENVELOPE
 WWW.ENVELOPE-ENG.CO.NZ

DESIGNED:MH	DRAWN:MH	
CHECK:LF	DATE:2026-03-11	
SCALE: 2000	STATUS: RESOURCE CONSENT	
PROJECT No: 1753-02	DRAWING No: 8363.7	REVISION: R1

NZGD2000 / New Zealand Transverse Mercator 2000 | NZTM

0 90 180 m

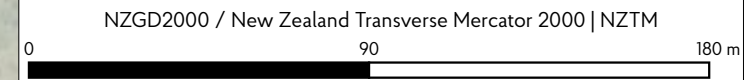


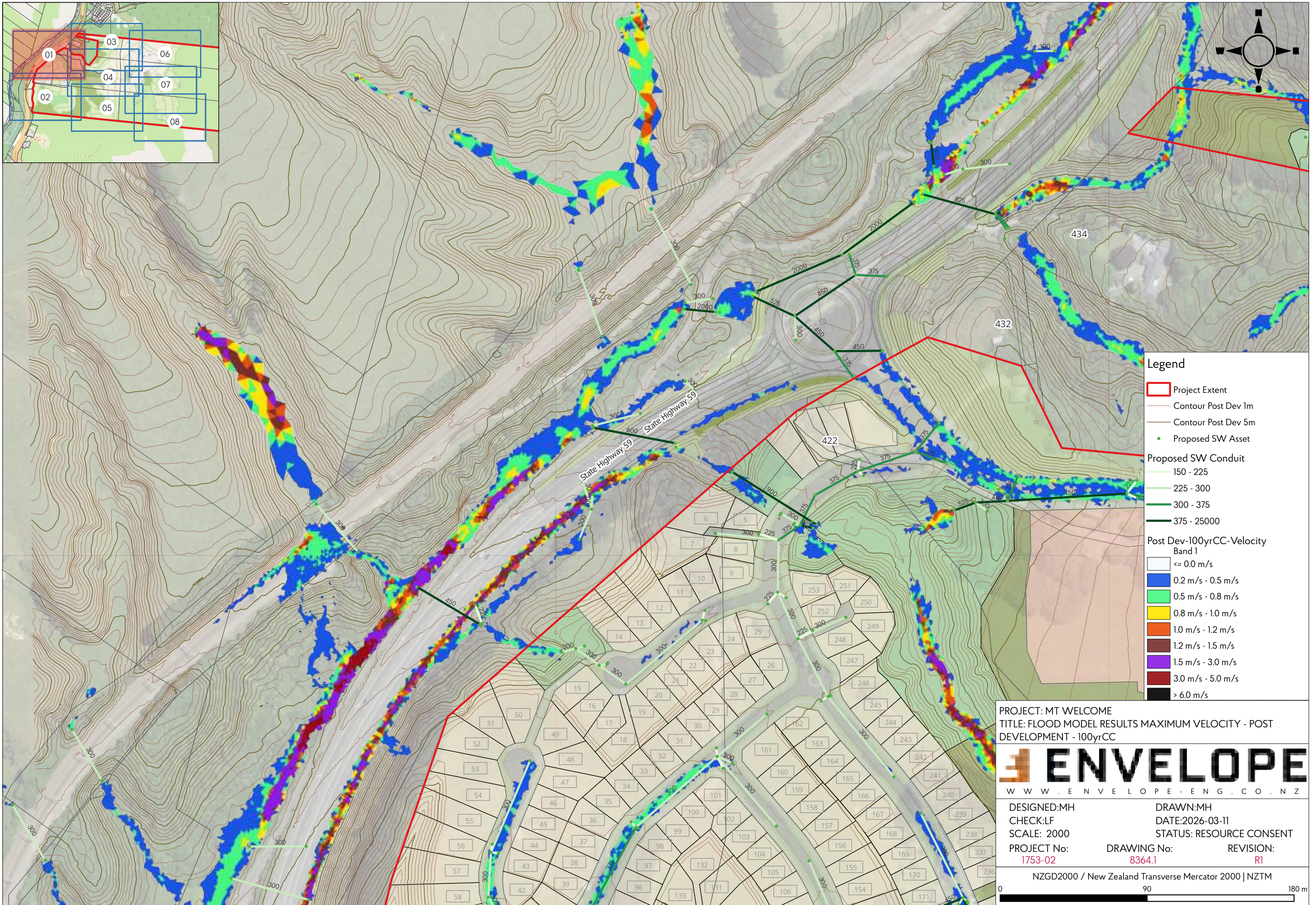
- Legend**
- Project Extent
 - Contour Post Dev 1m
 - Contour Post Dev 5m
 - Proposed SW Asset
- Proposed SW Conduit**
- 150 - 225
 - 225 - 300
 - 300 - 375
 - 375 - 25000
- Post Dev-100yrCC-Depth Band 1**
- <= 0.02m
 - 0.02m - 0.1m
 - 0.10m - 0.15m
 - 0.15m - 0.2m
 - 0.2m - 0.5m
 - 0.5m - 1.0m
 - 1.0m - 2.0m
 - >2m

PROJECT: MT WELCOME
 TITLE: FLOOD MODEL RESULTS MAXIMUM DEPTH - POST DEVELOPMENT - 100yrCC



DESIGNED:MH	DRAWN:MH	
CHECK:LF	DATE:2026-03-11	
SCALE: 2000	STATUS: RESOURCE CONSENT	
PROJECT No: 1753-02	DRAWING No: 8363.8	REVISION: R1





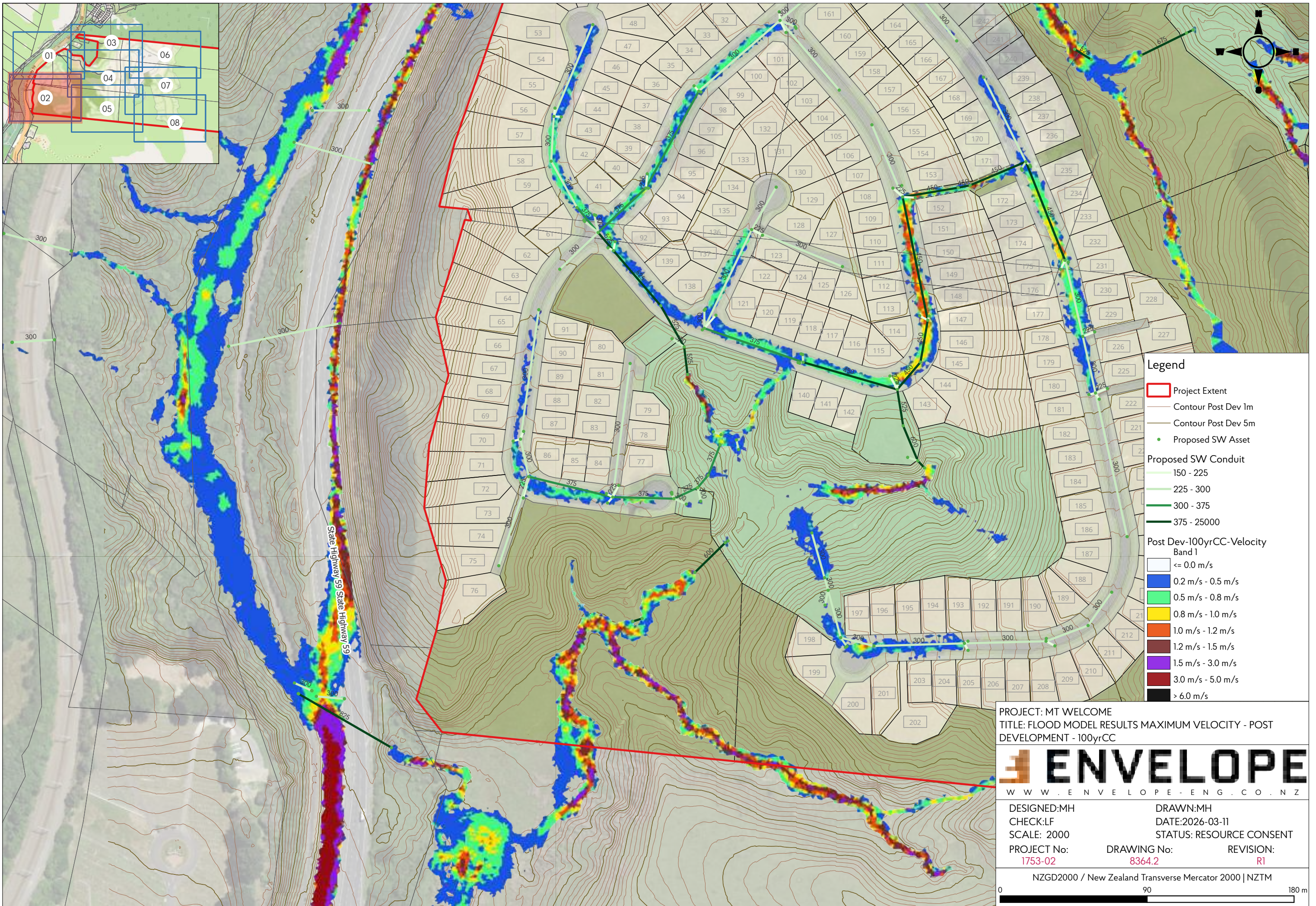
- Legend**
- Project Extent
 - Contour Post Dev 1m
 - Contour Post Dev 5m
 - Proposed SW Asset
- Proposed SW Conduit**
- 150 - 225
 - 225 - 300
 - 300 - 375
 - 375 - 25000
- Post Dev-100yrCC-Velocity Band 1**
- <= 0.0 m/s
 - 0.2 m/s - 0.5 m/s
 - 0.5 m/s - 0.8 m/s
 - 0.8 m/s - 1.0 m/s
 - 1.0 m/s - 1.2 m/s
 - 1.2 m/s - 1.5 m/s
 - 1.5 m/s - 3.0 m/s
 - 3.0 m/s - 5.0 m/s
 - > 6.0 m/s

PROJECT: MT WELCOME
 TITLE: FLOOD MODEL RESULTS MAXIMUM VELOCITY - POST DEVELOPMENT - 100yrCC



DESIGNED:MH	DRAWN:MH
CHECK:LF	DATE:2026-03-11
SCALE: 2000	STATUS: RESOURCE CONSENT
PROJECT No: 1753-02	DRAWING No: 8364.1
	REVISION: R1

NZGD2000 / New Zealand Transverse Mercator 2000 | NZTM
 0 90 180 m



- Legend**
- Project Extent
 - Contour Post Dev 1m
 - Contour Post Dev 5m
 - Proposed SW Asset
- Proposed SW Conduit**
- 150 - 225
 - 225 - 300
 - 300 - 375
 - 375 - 25000
- Post Dev-100yrCC-Velocity Band 1**
- <= 0.0 m/s
 - 0.2 m/s - 0.5 m/s
 - 0.5 m/s - 0.8 m/s
 - 0.8 m/s - 1.0 m/s
 - 1.0 m/s - 1.2 m/s
 - 1.2 m/s - 1.5 m/s
 - 1.5 m/s - 3.0 m/s
 - 3.0 m/s - 5.0 m/s
 - > 6.0 m/s

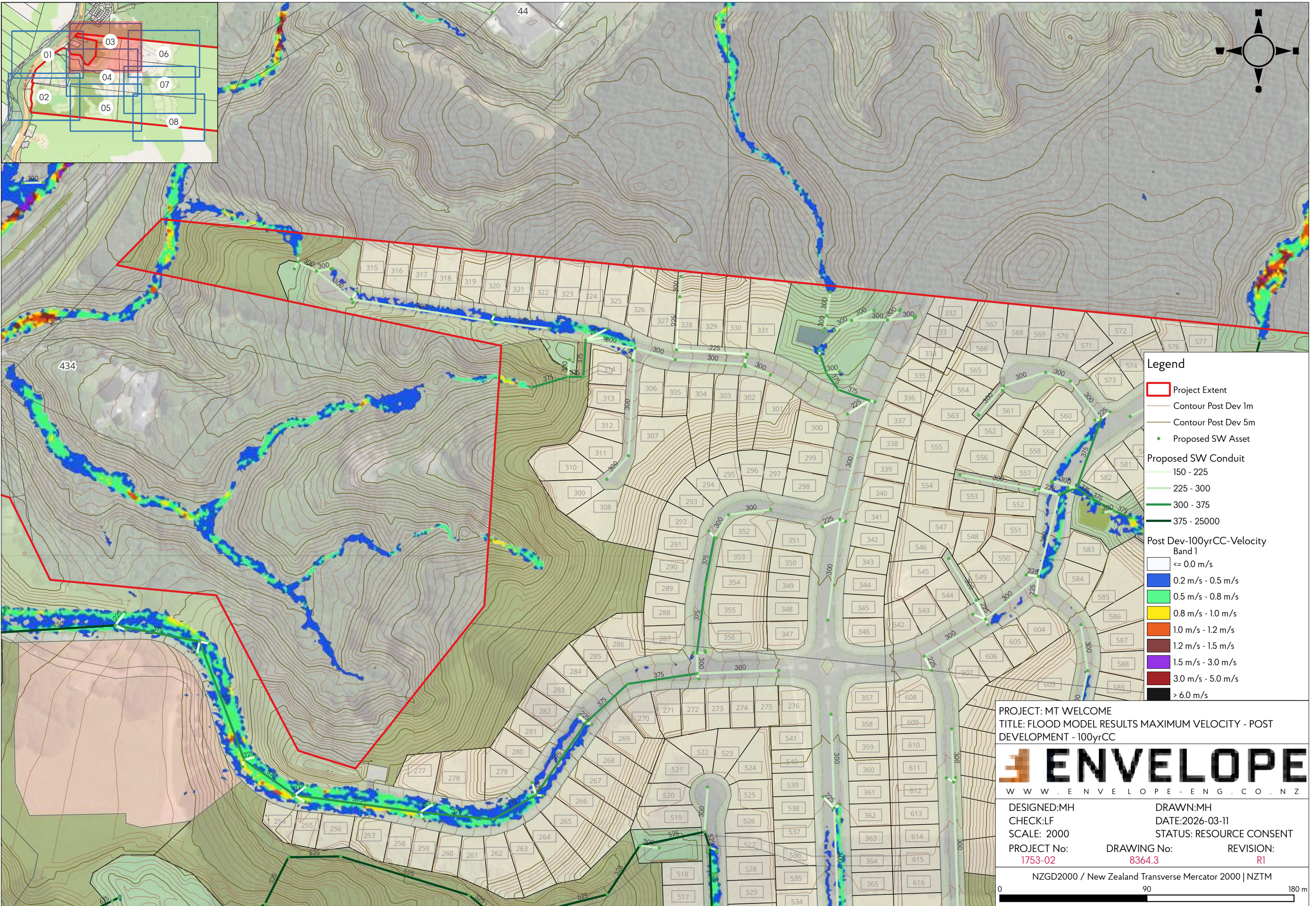
PROJECT: MT WELCOME
 TITLE: FLOOD MODEL RESULTS MAXIMUM VELOCITY - POST DEVELOPMENT - 100yrCC

ENVELOPE
 WWW.ENVELOPE-ENG.CO.NZ

DESIGNED:MH	DRAWN:MH	
CHECK:LF	DATE:2026-03-11	
SCALE: 2000	STATUS: RESOURCE CONSENT	
PROJECT No: 1753-02	DRAWING No: 8364.2	REVISION: R1

NZGD2000 / New Zealand Transverse Mercator 2000 | NZTM

0 90 180 m



- Legend**
- Project Extent
 - Contour Post Dev 1m
 - Contour Post Dev 5m
 - Proposed SW Asset
- Proposed SW Conduit**
- 150 - 225
 - 225 - 300
 - 300 - 375
 - 375 - 25000
- Post Dev-100yrCC-Velocity Band 1**
- <= 0.0 m/s
 - 0.2 m/s - 0.5 m/s
 - 0.5 m/s - 0.8 m/s
 - 0.8 m/s - 1.0 m/s
 - 1.0 m/s - 1.2 m/s
 - 1.2 m/s - 1.5 m/s
 - 1.5 m/s - 3.0 m/s
 - 3.0 m/s - 5.0 m/s
 - > 6.0 m/s

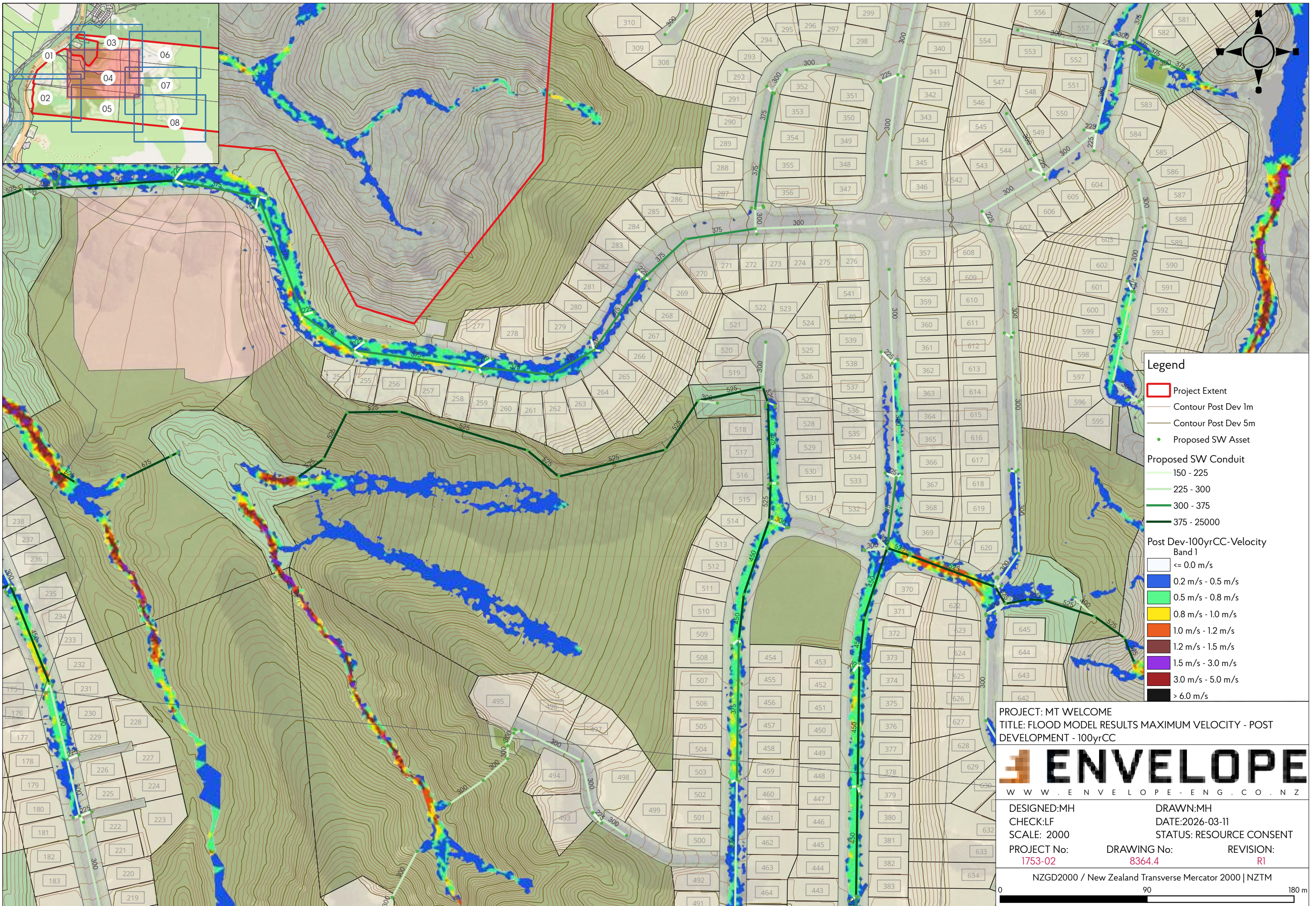
PROJECT: MT WELCOME
 TITLE: FLOOD MODEL RESULTS MAXIMUM VELOCITY - POST DEVELOPMENT - 100yrCC

ENVELOPE
 WWW.ENVELOPE-ENG.CO.NZ

DESIGNED:MH	DRAWN:MH	
CHECK:LF	DATE:2026-03-11	
SCALE: 2000	STATUS: RESOURCE CONSENT	
PROJECT No: 1753-02	DRAWING No: 8364.3	REVISION: R1

NZGD2000 / New Zealand Transverse Mercator 2000 | NZTM

0 90 180 m



- Legend**
- Project Extent
 - Contour Post Dev 1m
 - Contour Post Dev 5m
 - Proposed SW Asset
- Proposed SW Conduit**
- 150 - 225
 - 225 - 300
 - 300 - 375
 - 375 - 25000
- Post Dev-100yrCC-Velocity Band 1**
- <= 0.0 m/s
 - 0.2 m/s - 0.5 m/s
 - 0.5 m/s - 0.8 m/s
 - 0.8 m/s - 1.0 m/s
 - 1.0 m/s - 1.2 m/s
 - 1.2 m/s - 1.5 m/s
 - 1.5 m/s - 3.0 m/s
 - 3.0 m/s - 5.0 m/s
 - > 6.0 m/s

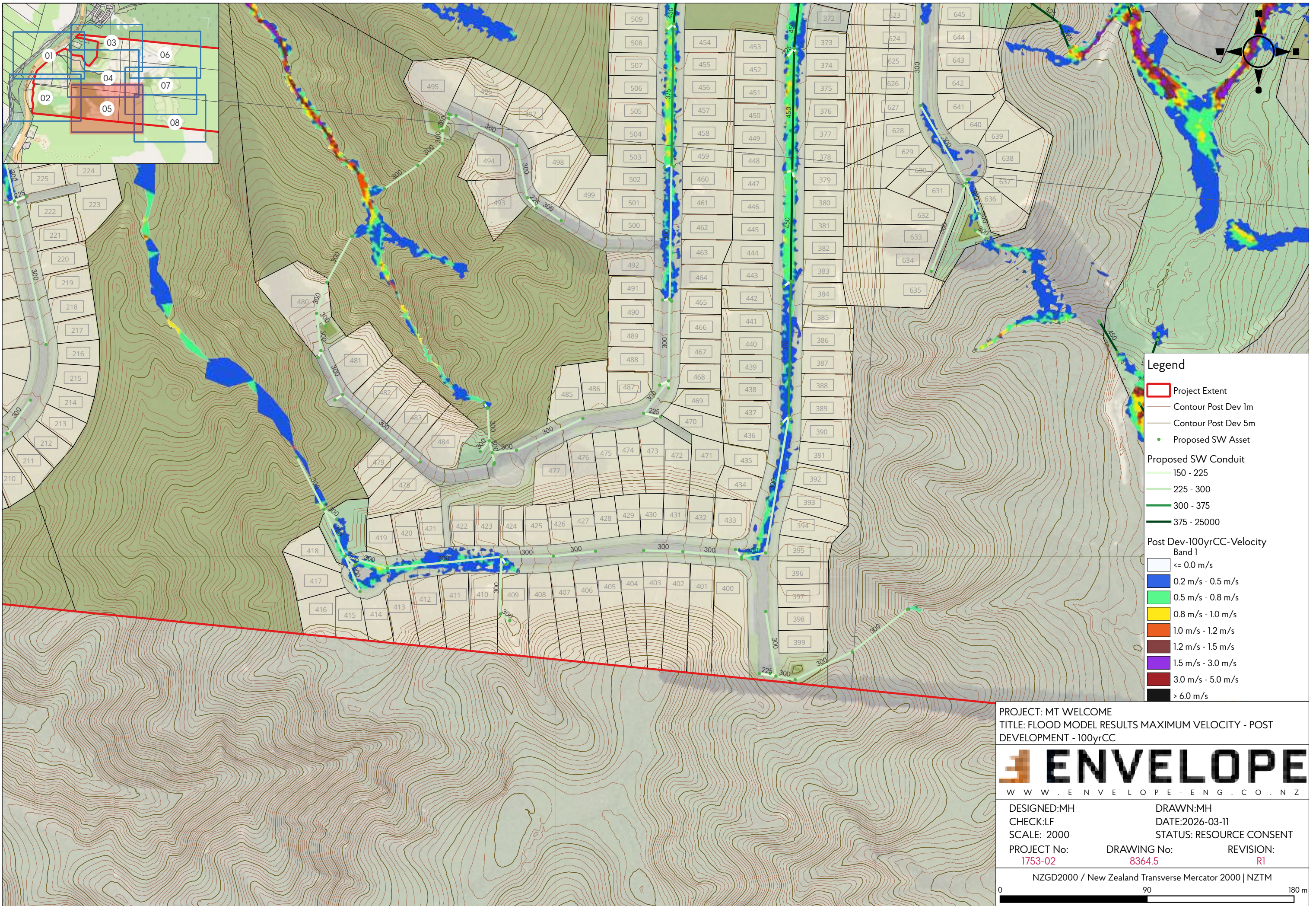
PROJECT: MT WELCOME
 TITLE: FLOOD MODEL RESULTS MAXIMUM VELOCITY - POST DEVELOPMENT - 100yrCC

ENVELOPE
 WWW.ENVELOPE-ENG.CO.NZ

DESIGNED:MH	DRAWN:MH	
CHECK:LF	DATE:2026-03-11	
SCALE: 2000	STATUS: RESOURCE CONSENT	
PROJECT No: 1753-02	DRAWING No: 8364.4	REVISION: R1

NZGD2000 / New Zealand Transverse Mercator 2000 | NZTM

0 90 180 m

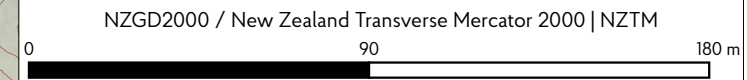


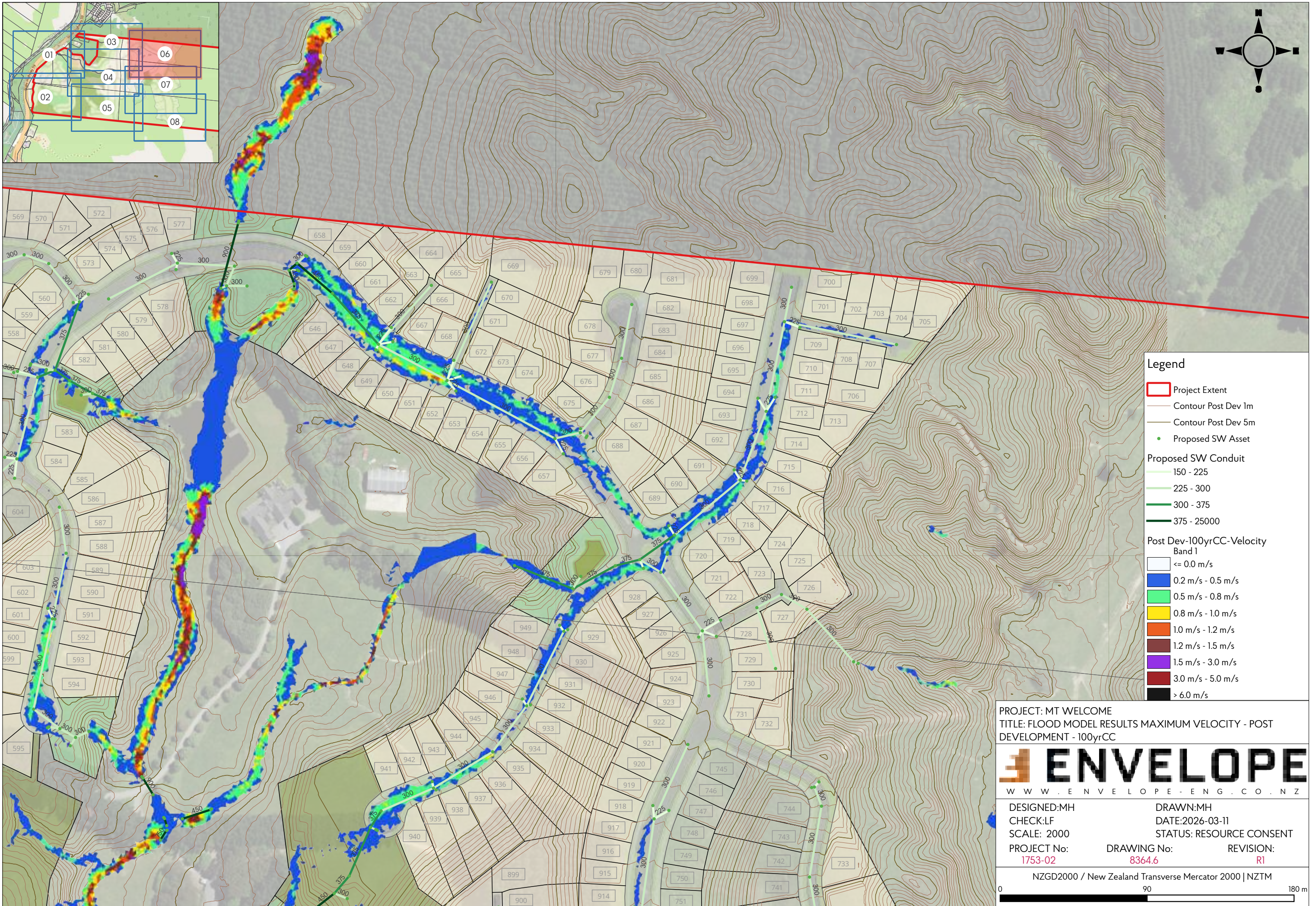
- Legend**
- Project Extent
 - Contour Post Dev 1m
 - Contour Post Dev 5m
 - Proposed SW Asset
- Proposed SW Conduit**
- 150 - 225
 - 225 - 300
 - 300 - 375
 - 375 - 25000
- Post Dev-100yrCC-Velocity Band 1**
- <= 0.0 m/s
 - 0.2 m/s - 0.5 m/s
 - 0.5 m/s - 0.8 m/s
 - 0.8 m/s - 1.0 m/s
 - 1.0 m/s - 1.2 m/s
 - 1.2 m/s - 1.5 m/s
 - 1.5 m/s - 3.0 m/s
 - 3.0 m/s - 5.0 m/s
 - > 6.0 m/s

PROJECT: MT WELCOME
 TITLE: FLOOD MODEL RESULTS MAXIMUM VELOCITY - POST DEVELOPMENT - 100yrCC



DESIGNED:MH	DRAWN:MH
CHECK:LF	DATE:2026-03-11
SCALE: 2000	STATUS: RESOURCE CONSENT
PROJECT No: 1753-02	DRAWING No: 8364.5
	REVISION: R1





- Legend**
- Project Extent
 - Contour Post Dev 1m
 - Contour Post Dev 5m
 - Proposed SW Asset
- Proposed SW Conduit**
- 150 - 225
 - 225 - 300
 - 300 - 375
 - 375 - 25000
- Post Dev-100yrCC-Velocity Band 1**
- <= 0.0 m/s
 - 0.2 m/s - 0.5 m/s
 - 0.5 m/s - 0.8 m/s
 - 0.8 m/s - 1.0 m/s
 - 1.0 m/s - 1.2 m/s
 - 1.2 m/s - 1.5 m/s
 - 1.5 m/s - 3.0 m/s
 - 3.0 m/s - 5.0 m/s
 - > 6.0 m/s

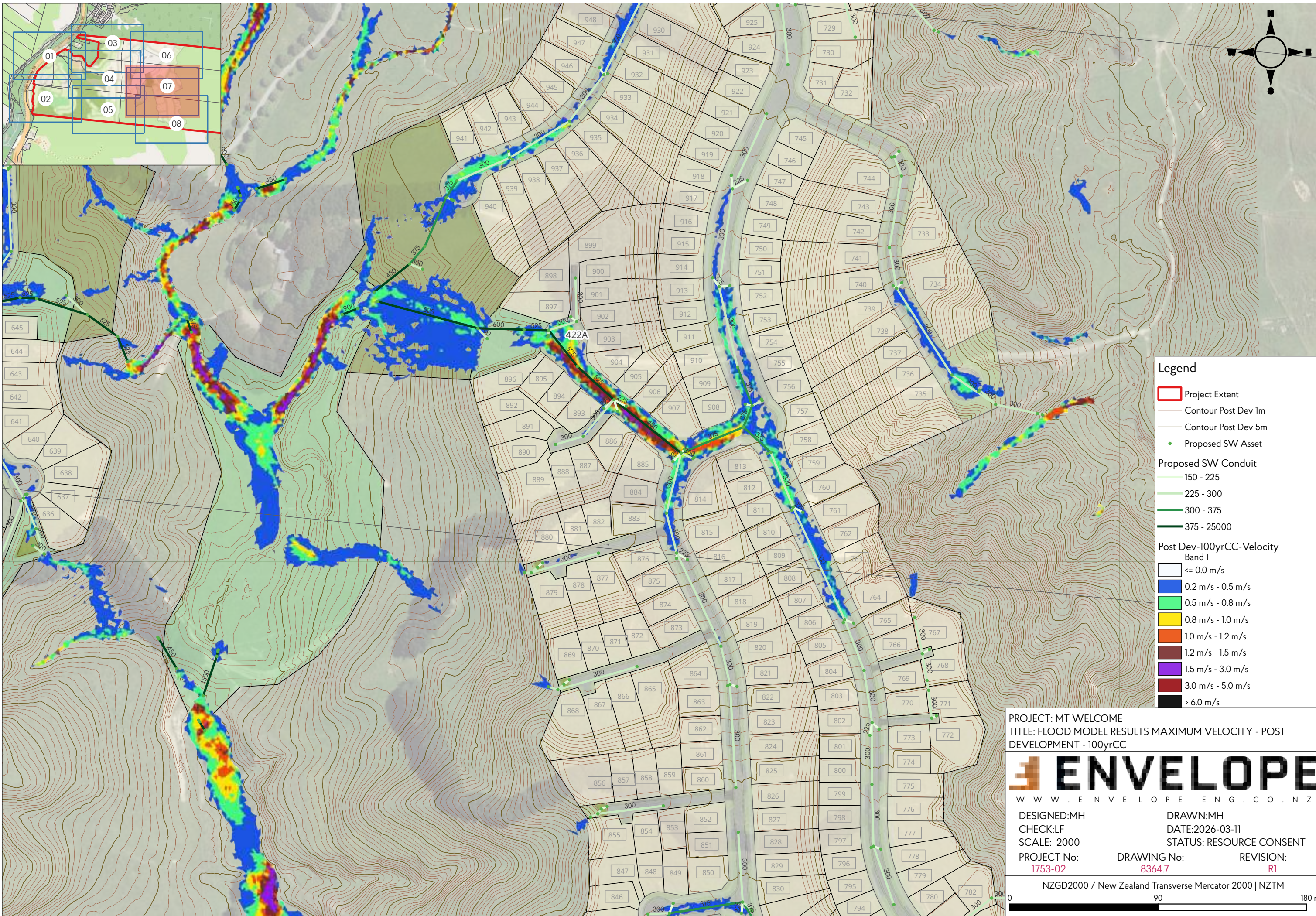
PROJECT: MT WELCOME
 TITLE: FLOOD MODEL RESULTS MAXIMUM VELOCITY - POST DEVELOPMENT - 100yrCC

ENVELOPE
 WWW.ENVELOPE-ENG.CO.NZ

DESIGNED:MH	DRAWN:MH	
CHECK:LF	DATE:2026-03-11	
SCALE: 2000	STATUS: RESOURCE CONSENT	
PROJECT No: 1753-02	DRAWING No: 8364.6	REVISION: R1

NZGD2000 / New Zealand Transverse Mercator 2000 | NZTM

0 90 180 m



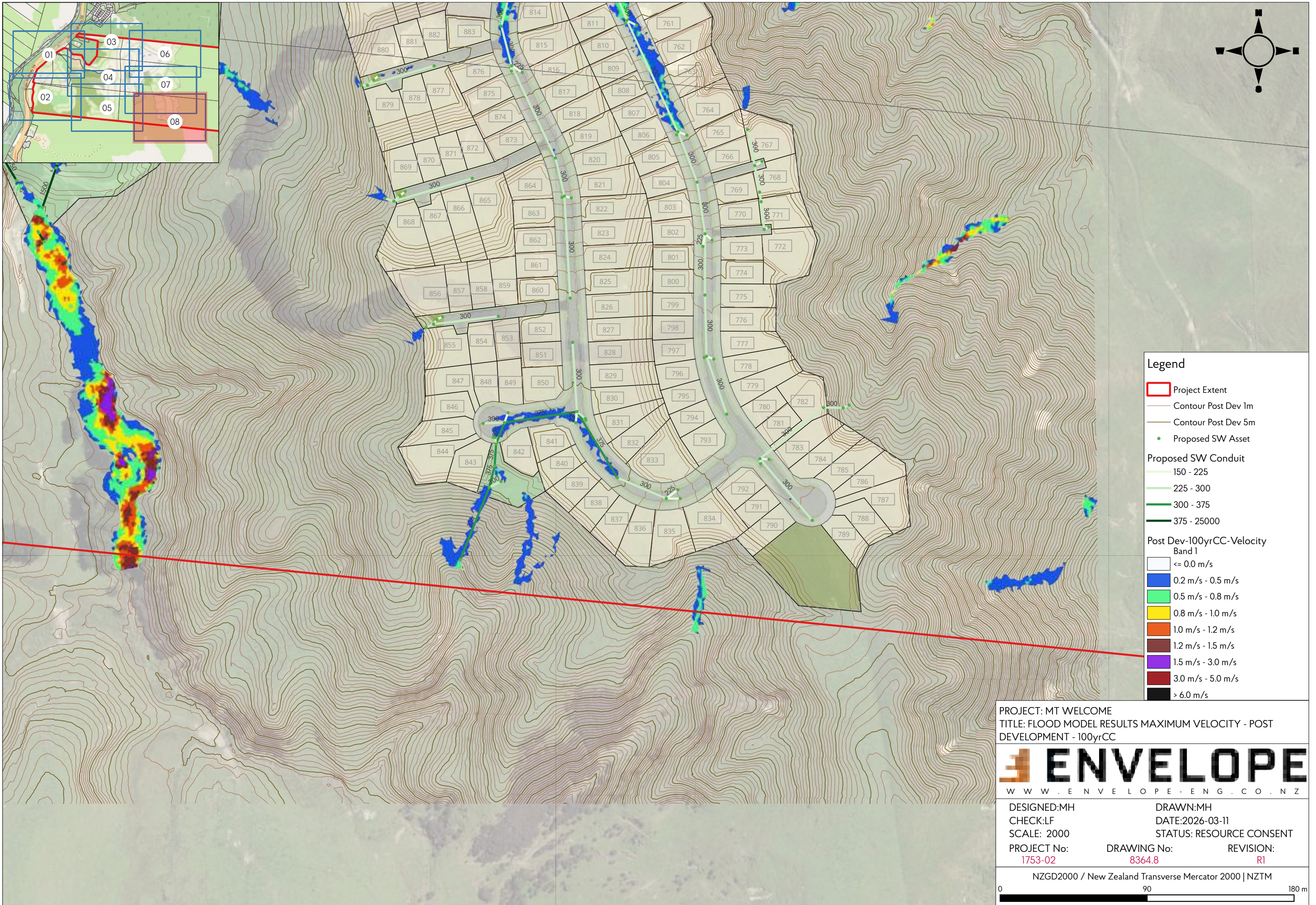
- Legend**
- Project Extent
 - Contour Post Dev 1m
 - Contour Post Dev 5m
 - Proposed SW Asset
- Proposed SW Conduit**
- 150 - 225
 - 225 - 300
 - 300 - 375
 - 375 - 25000
- Post Dev-100yrCC-Velocity Band 1**
- <= 0.0 m/s
 - 0.2 m/s - 0.5 m/s
 - 0.5 m/s - 0.8 m/s
 - 0.8 m/s - 1.0 m/s
 - 1.0 m/s - 1.2 m/s
 - 1.2 m/s - 1.5 m/s
 - 1.5 m/s - 3.0 m/s
 - 3.0 m/s - 5.0 m/s
 - > 6.0 m/s

PROJECT: MT WELCOME
 TITLE: FLOOD MODEL RESULTS MAXIMUM VELOCITY - POST DEVELOPMENT - 100yrCC



DESIGNED:MH	DRAWN:MH
CHECK:LF	DATE:2026-03-11
SCALE: 2000	STATUS: RESOURCE CONSENT
PROJECT No: 1753-02	DRAWING No: 8364.7
	REVISION: R1

NZGD2000 / New Zealand Transverse Mercator 2000 | NZTM
 0 90 180 m



- Legend**
- Project Extent
 - Contour Post Dev 1m
 - Contour Post Dev 5m
 - Proposed SW Asset
- Proposed SW Conduit**
- 150 - 225
 - 225 - 300
 - 300 - 375
 - 375 - 25000
- Post Dev-100yrCC-Velocity Band 1**
- <= 0.0 m/s
 - 0.2 m/s - 0.5 m/s
 - 0.5 m/s - 0.8 m/s
 - 0.8 m/s - 1.0 m/s
 - 1.0 m/s - 1.2 m/s
 - 1.2 m/s - 1.5 m/s
 - 1.5 m/s - 3.0 m/s
 - 3.0 m/s - 5.0 m/s
 - > 6.0 m/s

PROJECT: MT WELCOME
 TITLE: FLOOD MODEL RESULTS MAXIMUM VELOCITY - POST DEVELOPMENT - 100yrCC



DESIGNED:MH	DRAWN:MH	
CHECK:LF	DATE:2026-03-11	
SCALE: 2000	STATUS: RESOURCE CONSENT	
PROJECT No: 1753-02	DRAWING No: 8364.8	REVISION: R1

