

MEMORANDUM OF EASEMENTS – PROPOSED, RETAINED, AND IN GROSS

Ref	Benefited Lot/Grantee	Burdened Lot	Purpose
E1.1G	Kāpiti Coast District Council (in Gross)	SL2A	Right to Convey Water Right to Drain Sewage
E1.2G	Kāpiti Coast District Council (in Gross)	SL4A	Right to Convey Water Right to Drain Sewage

- Notes:
- Coordinates in NZGD2000 (Wellington Circuit) and NZVD2016.
 - Boundaries and titles derived from LINZ DCDB and subject to final survey.
 - KCDC and GWRC planning overlays sourced from operative ArcGIS MapServer layers.
 - Easements required for servicing to be created at implementation stage or as otherwise required by Kāpiti Coast District Council.

Phase 1 Superlot Plan
Sheet 13 of 14

Waikanae North Developments Ltd

Waikanae North
Peka Peka, Kapiti Coast

© Landlink Limited 2025



1 Ngaio Road, Waikanae 5036 + contactus@Landlink.nz

STAGE	PH1
REVISION	C
REVISION DETAILS	Issued For Consent

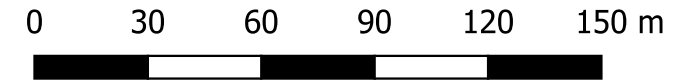
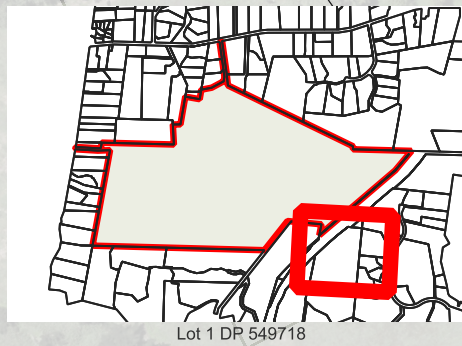
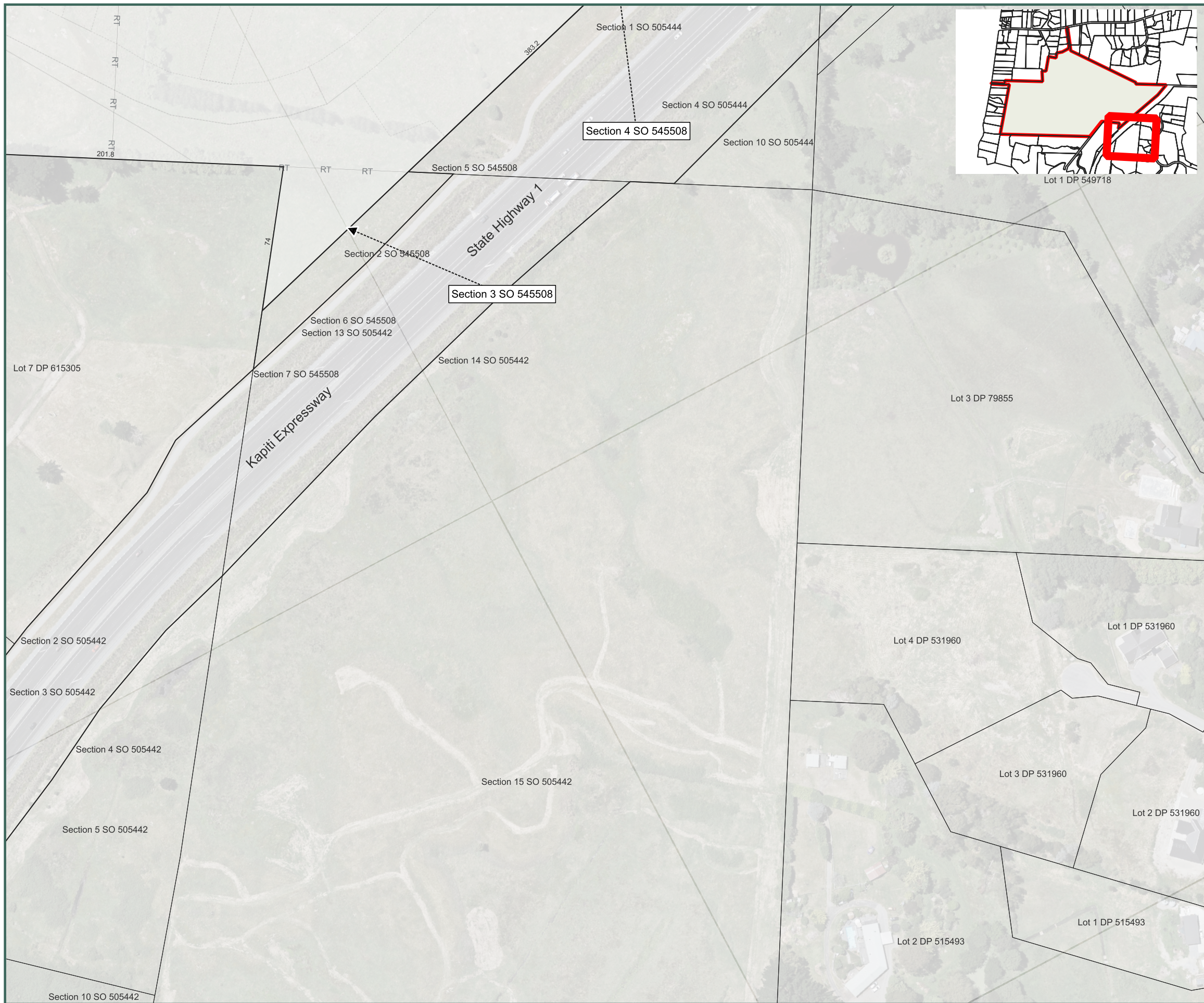
DESIGNED BY	JJH
DRAWN BY	JJH
APPROVED BY	PT

DATE 2026-03-13

SCALE Refer Scale Bar

2911-PH1-P-16

This drawing contains data from other sources and has been prepared for a specific site and event. Landlink Limited does not accept any liability for its accuracy, content or unauthorised use.



- Notes:
1. Coordinates in NZGD2000 (Wellington Circuit) and NZVD2016.
 2. Boundaries and titles derived from LINZ DCDB and subject to final survey.
 3. KCDC and GWRC planning overlays sourced from operative ArcGIS MapServer layers.
 4. Easements required for servicing to be created at implementation stage or as otherwise required by Kāpiti Coast District Council.

Phase 1 Superlot Plan
Sheet 14 of 14

Waikanae North Developments Ltd

Waikanae North
Peka Peka, Kapiti Coast

This drawing contains data from other sources and has been prepared for a specific site and event. Landlink Limited does not accept any liability for its accuracy, content or unauthorised use.

© Landlink Limited 2025



1 Ngaio Road, Waikanae 5036 + contactus@Landlink.nz

STAGE	PH1
REVISION	C
REVISION DETAILS	Issued For Consent

DESIGNED BY	JJH
DRAWN BY	JJH
APPROVED BY	PT

DATE 2026-03-13

SCALE Refer Scale Bar

2911-PH1-P-17