

## **Milldale Wastewater Treatment Plant**

### **Statement of Qualifications and Experience**

#### **Jeremy Cooke – Landscape Architect**

I am a Principal Landscape Architect at Beca Ltd. Beca Ltd is an independent advisory, design and engineering consultancy. Beca have more than 4,000 employees in 25 offices around the world and have delivered projects in more than 70 countries. I have been employed at Beca since November 2008.

I hold the qualifications of Bachelor of Landscape Architecture (Hons) and a Diploma of Parks and Garden Technology from Lincoln University, which I completed in 1995. I am a Registered member of the New Zealand Institute of Landscape Architects.

I have 30 years of professional experience in the Landscape Architecture field, including roles such as Associate and Regional Manager of Isthmus Group Christchurch, and senior through to principal roles at Beca Ltd. My experience includes Urban Design and Landscape Design projects throughout New Zealand and the Pacific. My roles have covered urban design, landscape design and assessment for a wide range of projects including urban revitalisation projects, road infrastructure projects, master planning projects, parks and reserves developments and land development projects.

I have a strong background in urban renewal, streetscape and road infrastructure projects including design work on numerous town centre projects and NZ Transport Agency Waka Kotahi Roads of National Significance projects throughout New Zealand. During these projects I have engaged and partnered with local Tanga Whenua groups, key stakeholders, and local authorities to help drive well-coordinated and quality design outcomes.

My role on this project has been to undertake the landscape design of the WWTP site and integrate the site elements in the surrounding context of urban development and existing stream.

I confirm that, in my capacity as landscape designer of these drawings and schedule, I have read and abide by the Environment Court of New Zealand's Code of Conduct for Expert Witnesses Practice Note 2023.

Jeremy Cooke



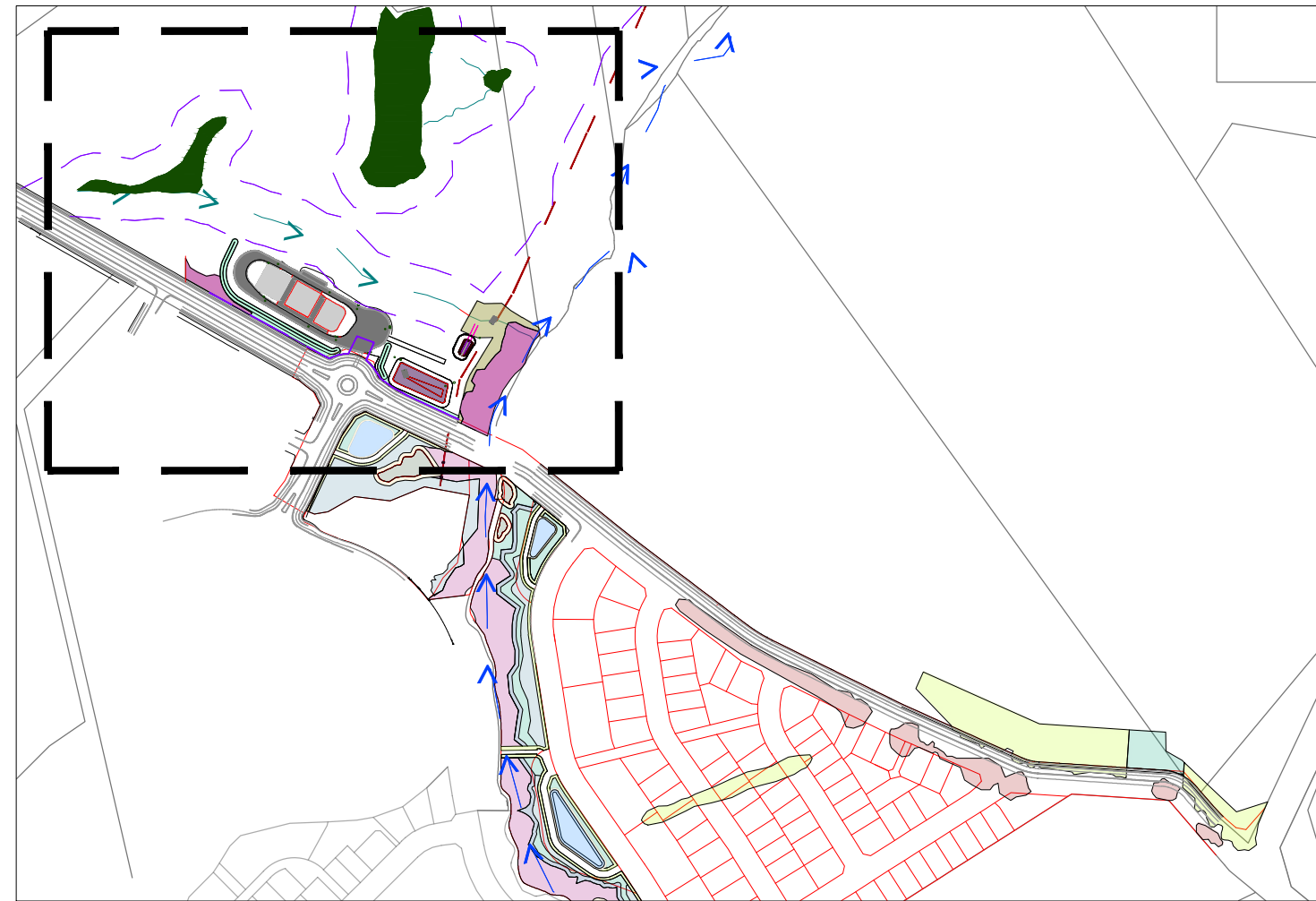
26/02/2025



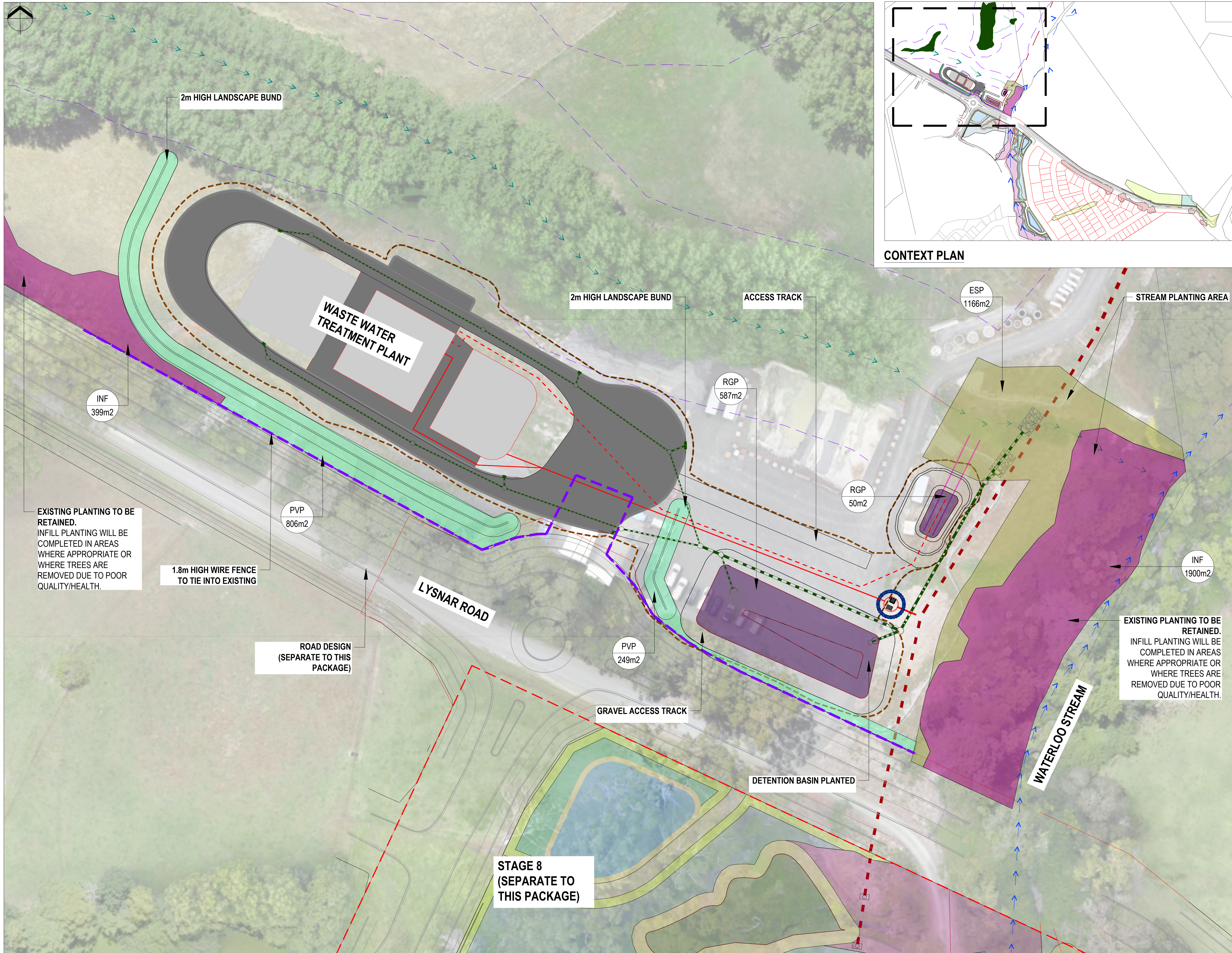
LEGEND

- ESP - ENHANCING STREAM PLANTING
- INF - EXISTING PLANTING TO BE RETAINED WITH ADDED ENRICHMENT PLANTING
- PVP - PROPOSED VISUAL SCREEN PLANTING
- RGP - RAIN GARDEN PLANTING

FOR PLANT AREAS AND SPECIES, REFER TO PLANT SCHEDULE, DRAWING 4672100-AL-S9-3000



CONTEXT PLAN



No.	Revision	By	Chk	Appd	Date
A	FOR CONSENT	DD	JC	JC	26.02.25

Original Scale (A1)	Design	J. COOKE	04.12.24	Approved For Construction*
1:400 @ A1	Drawn	D. DAY	26.02.25	Date
Reduced Scale (A3)	Design Verifier	J. COOKE	26.02.25	
1:800 @ A3	Dwg Check	J. COOKE	26.02.25	
	* Refer to Revision 1 for Original Signature			

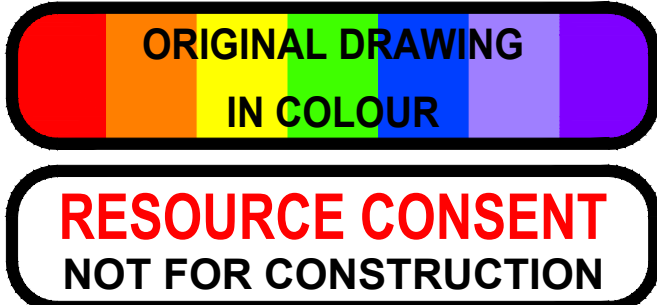


Client: FULTON HOGAN LAND DEVELOPMENT

Project: MILLDALE WASTEWATER TREATMENT PLAN LANDSCAPE LAYOUT PLAN

Title: PLANTING PLAN SHEET 1 OF 2

Discipline	Drawing No.	Rev.
LANDSCAPE	4672100-AL-S9-1000	A





	BOTANICAL NAME	COMMON NAME	WETLAND INDICATOR STATUS RATING	GRAD E	DENSITY/ m2	% OF MIX	AREA M2	PLANT NUMBERS
	RGP - RAIN GARDEN PLANTING							
	APODASMA SIMILIS	OIOI	FACW	1L	4	60%	50	30
	JUNCUS SAROPHORUS	WIWI/ GIANT RUSH	FACW	1L	4	20%		10
	CAREX GEMINATA	RAUTAH	FACW	1L	4	20%		10
						100%		50
	PVP - PROPOSED VISUAL SCREENING PLANTING						AREA M2	PLANT NUMBERS
	COPROSMA PROPINQUA	MINGI MINGI	FACU	1L	1	10%	909	91
	COPROSMA ROBUSTA	KARAMU	FACU	1L	1	15%		136
	CORDYLINE AUSTRALIS	CABBAGE TREE - TI KOUKA	FAC	1L	1	10%		91
	CORTADERIA FULVIDA	TOE TOE	FAC	1L	1	10%		91
	KUNZEA ERICOIDES	KANUKA	FACU	1L	1	10%		91
	LEPTOSPERMUM SCOPARIUM	MANUKA	FAC	1L	1	20%		182
	PHORMIUM TENAX	HARAKEKE	FACW	1L	1	10%		91
	PITTOSPORUM EUGENIOIDES	LEMONWOOD		1L	1	15%		136
						100%		909
	LEP - LOWER EMBANKMENT PLANTING						AREA M2	PLANT NUMBERS
	COPROSMA PROPINQUA	MINGI MINGI	FACU	1L	1	5%	766	38
	COPROSMA ROBUSTA	KARAMU	FACU	1L	1	5%		38
	CORDYLINE AUSTRALIS	CABBAGE TREE - TI KOUKA	FAC	1L	1	5%		38
	CORTADERIA FULVIDA	TOE TOE	FAC	1L	1	10%		77
	HOHERIA POPULNEA	LACEBARK	FACU	1L	1	5%		38
	KUNZEA ERICOIDES	KANUKA	FACU	1L	1	10%		77
	LEPTOSPERMUM SCOPARIUM	MANUKA	FAC	1L	1	5%		38
	MELICYTUS RAMIFLORUS	MAHOE	FACU	1L	1	5%		38
	MYRSINE AUSTRALIS	MAPOU	FACU	1L	1	5%		38
	PHORMIUM TENAX	HARAKEKE	FACW	1L	1	30%		230
	PLAGIANTHUS REGIUS	RIBBONWOOD	FACU	1L	1	5%		38
	VERONICA SALICIFOLIA	HEBE	FACU	1L	1	10%		77
						100%		766
	SEP - STREAM EDGE PLANTING						AREA M2	PLANT NUMBERS
	CAREX VIRGATA	PUREI	FACW	1L	4	25%	664	166
	CAREX LESSONIANA	RAUTAH	FACW	1L	4	30%		199
	CORDYLINE AUSTRALIS	CABBAGE TREE - TI KOUKA	FAC	1L	4	5%		33
	CORTADERIA FULVIDA	TOE TOE	FAC	1L	4	20%		133
	CYPERUS USTULATUS	GIANT UMBERELLA SEDGE	FACW	1L	4	20%		133
						100%		664
	UEP - UPPER EMBANKMENT PLANTING						AREA M2	PLANT NUMBERS
	PODOCARPUS TOTARA	TOTARA	FACU	1L	0.25	5%	1531	77
	ALECTRYON EXCELSUS	TITOKI		1L	0.25	5%		77
	COPROSMA ROBUSTA	KARAMU	FACU	1L	0.25	5%		77
	CORDYLINE AUSTRALIS	CABBAGE TREE - TI KOUKA	FAC	1L	0.25	10%		153
	CORYNOCARPUS LAEVIGATUS	KARAKA	FACU	1L	0.25	5%		77
	DACRYCARPUS DACRYDIOIDES	KAHIKATEA	FAC	1L	0.25	5%		77
	DACRYDIUM CUPRESSINUM	RIMU	FACU	1L	0.25	5%		77
	HOHERIA POPULNEA	LACEBARK	FACU	1L	0.25	5%		77
	KNIGHTEA EXCELSA	REWAREWA	UPL	1L	0.25	5%		77
	KUNZEA ERICOIDES	KANUKA	FACU	1L	0.25	10%		153
	LEPTOSPERMUM SCOPARIUM	MANUKA	FAC	1L	0.25	5%		77
	MELICYTUS RAMIFLORUS	MAHOE	FACU	1L	0.25	5%		77
	MYRSINE AUSTRALIS	MAPOU	FACU	1L	0.25	5%		77
	PHORMIUM TENAX	HARAKEKE	FACW	1L	0.25	15%		230
	PITTOSPORUM EUGENIOIDES	LEMONWOOD		1L	0.25	5%		77
	VITEX LUCENS	PURIRI	UPL	1L	0.25	5%		77
						100%		1531

A	FOR CONSENT	DD	JC	JC	26.02.25
No.	Revision	By	Chk	Appd	Date

Original Scale (A1) 1:500 @ A1	Design J. COOKE	04.12.24	Approved For Construction*
	Drawn D. DAY	26.02.25	
	Dsg Verifier J. COOKE	26.02.25	
Reduced Scale (A3) 1:1000 @ A3	Drg Check J. COOKE	26.02.25	Date
* Refer to Revision 1 for Original Signature			



Client:	FULTON HOGAN LAND DEVELOPMENT
---------	----------------------------------

Project:	MILLDALE WASTERWATER TREATMENT PLANT LANDSCAPE LAYOUT PLAN
----------	--

Title:	PLANT SCHEDULE SHEET 2 OF 2
--------	--------------------------------

Discipline	LANDSCAPE	
Drawing No.	4672100-AL-S9-3000	Rev. A

