

Appendix 3: Modelled demersal fish distribution (% occurrence)

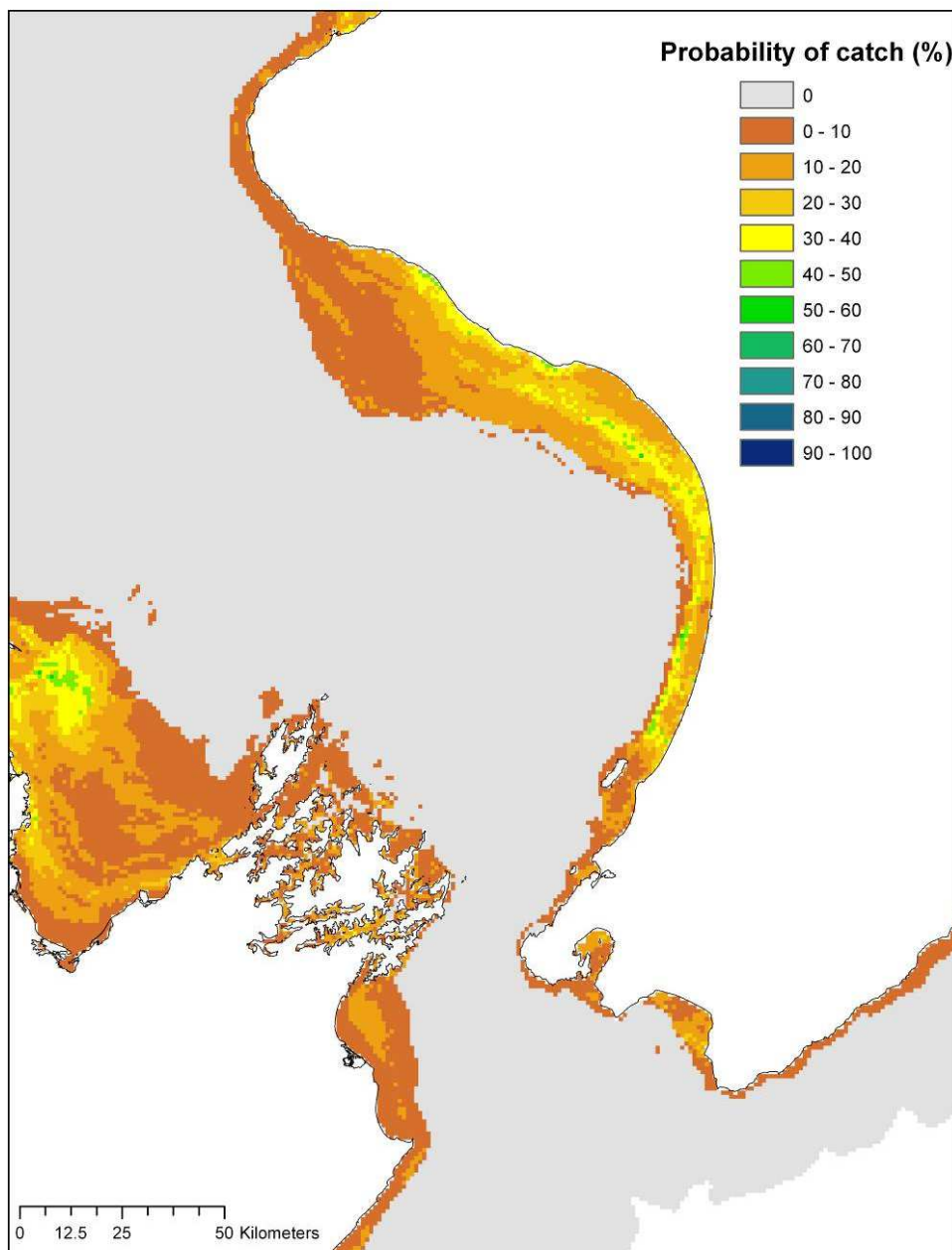


Figure A3.1: Probability of occurrence (%) of anchovy (*Engraulis australis*) in a demersal trawl in the South Taranaki Bight region.

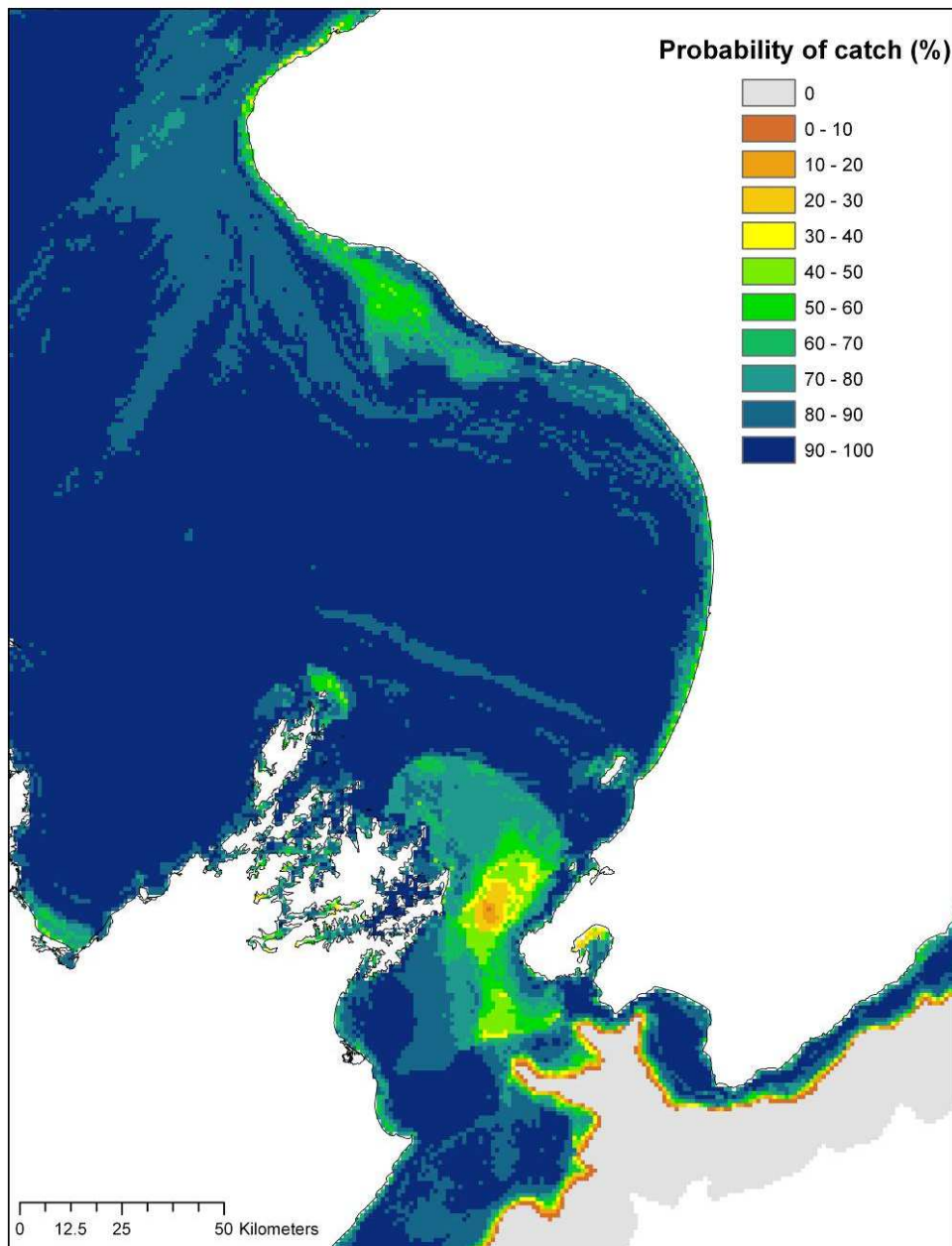


Figure A3.2: Probability of occurrence (%) of barracouta (*Thyrsites atun*) in a demersal trawl in the South Taranaki Bight region.

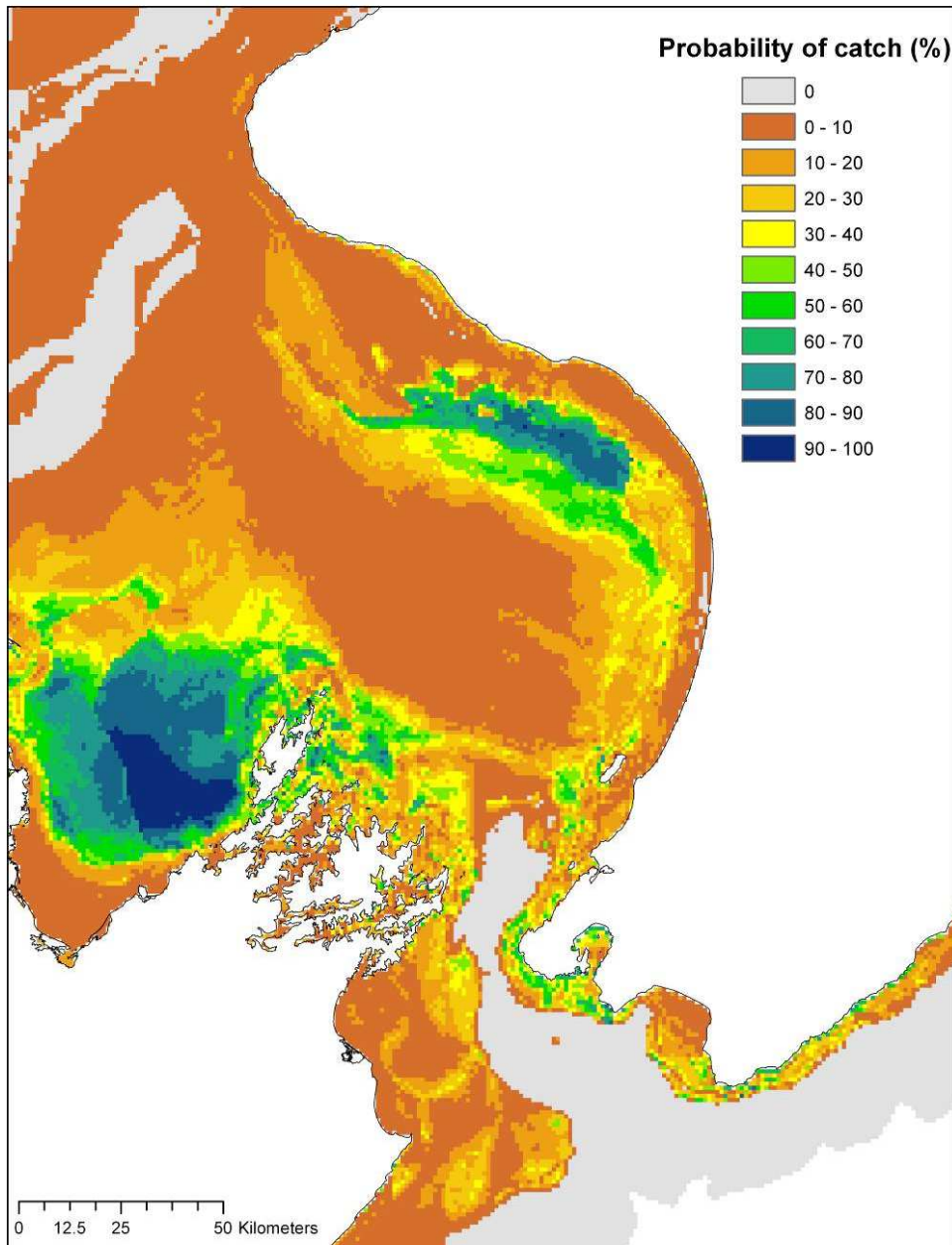


Figure A3.3: Probability of occurrence (%) of blue cod (*Parapercis colias*) in a demersal trawl in the South Taranaki Bight region.

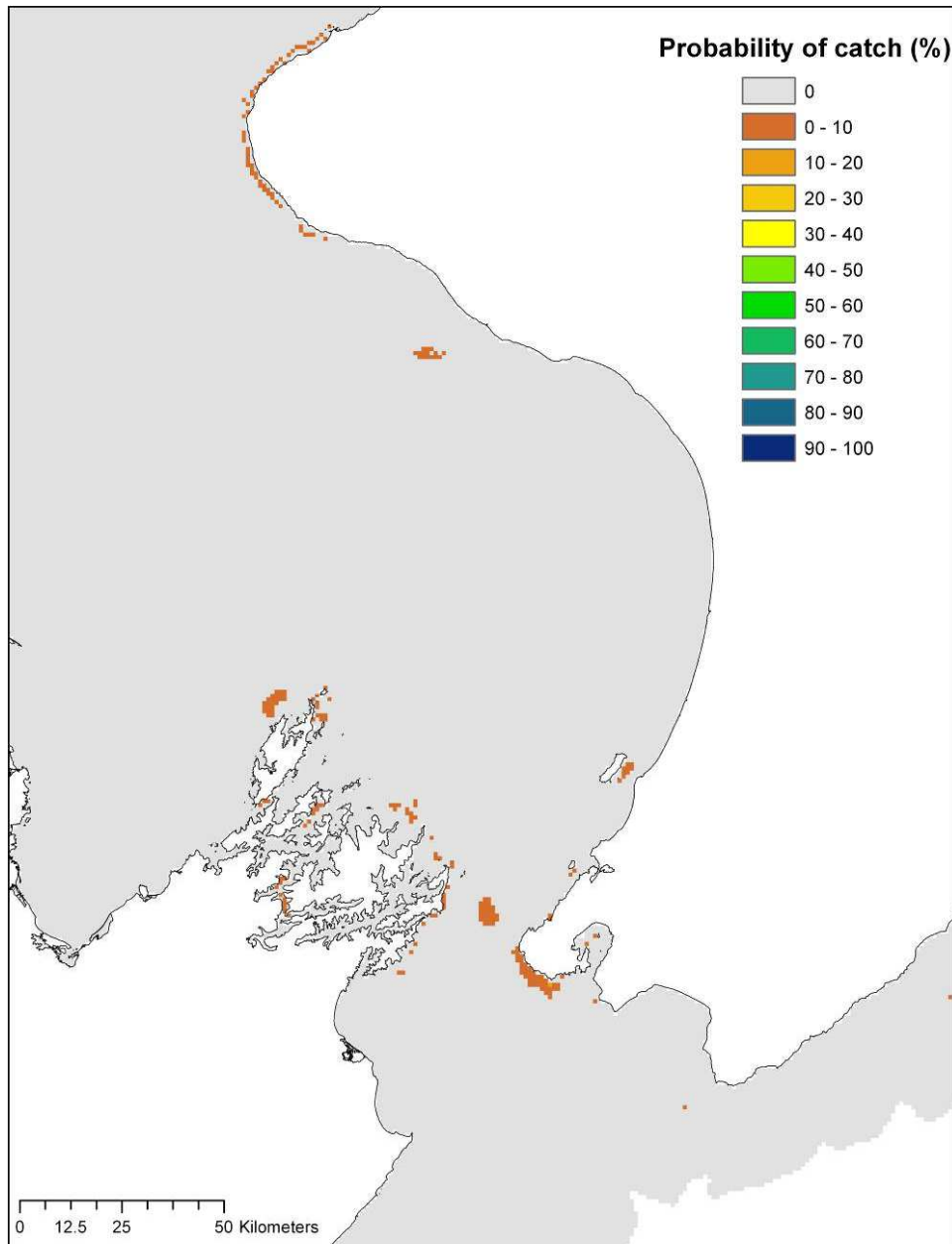


Figure Error! Use the Home tab to apply Heading 1 to the text that you want to appear here.-4:
Probability of occurrence (%) of short-tailed black ray (*Dasyatis brevicaudata*) in a demersal trawl in the South Taranaki Bight region.

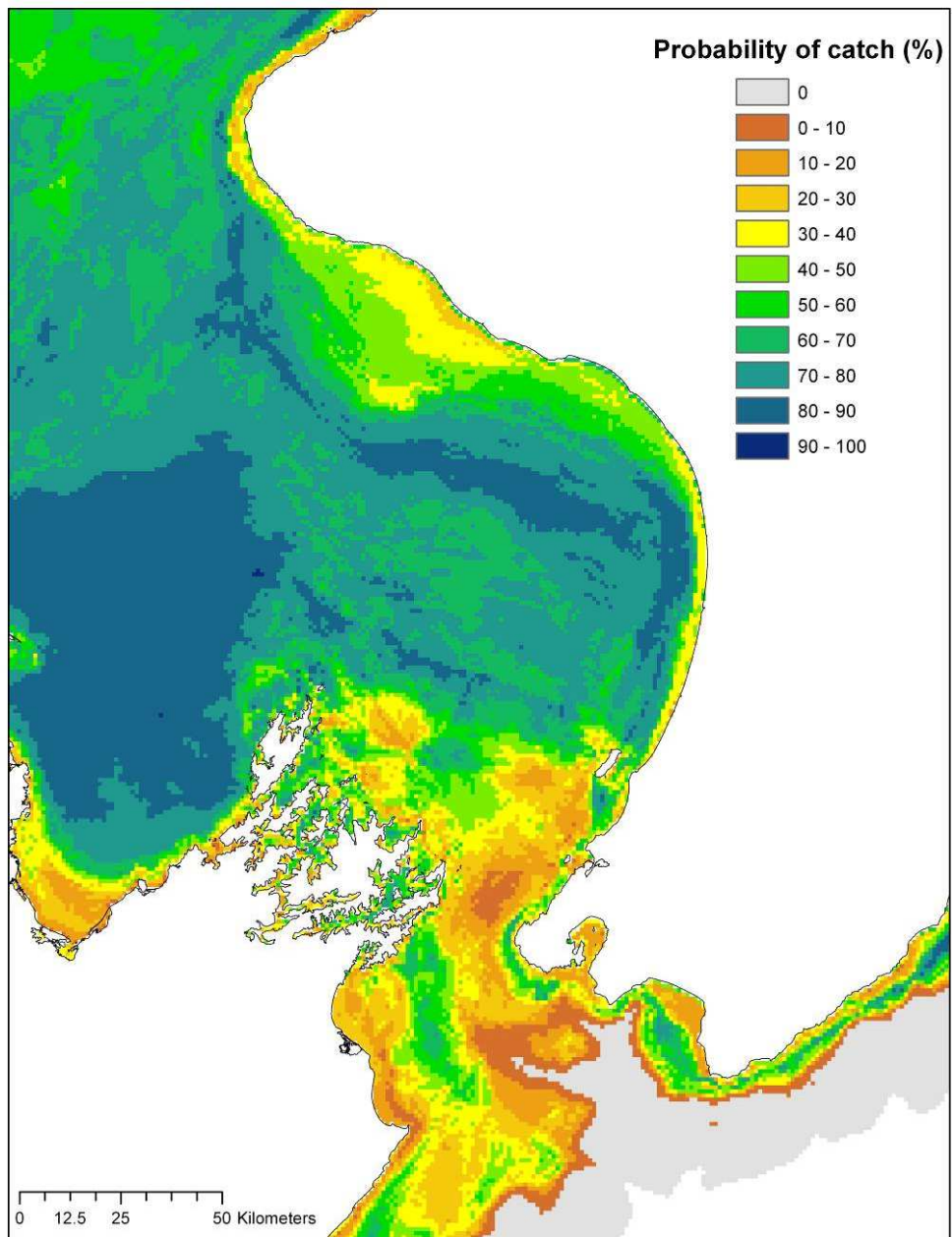


Figure A3.5: Probability of occurrence (%) of carpet shark (*Cephaloscyllium isabellum*) in a demersal trawl in the South Taranaki Bight region.

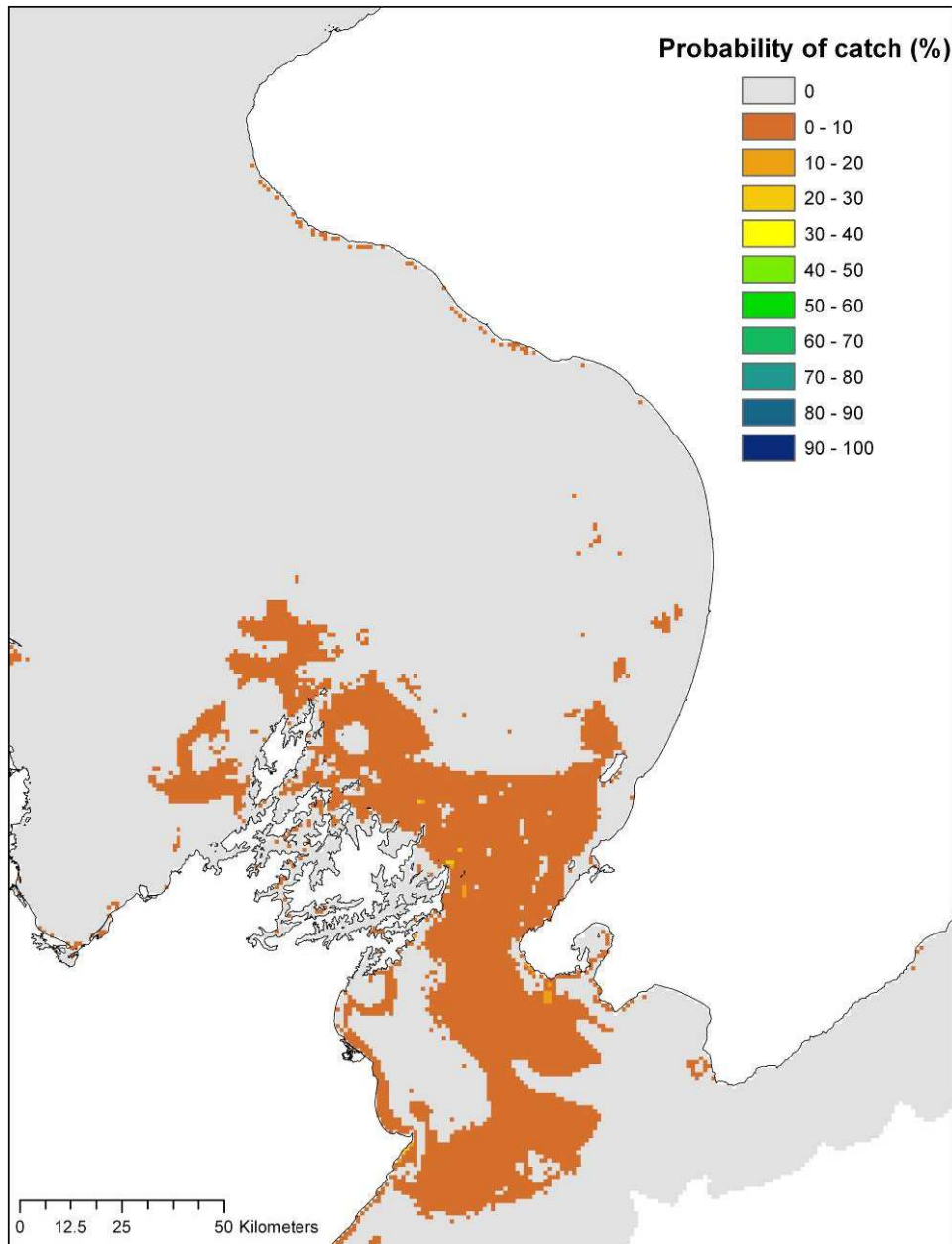


Figure A3.6: Probability of occurrence (%) of crested bellowsfish (*Notopogon lillei*) in a demersal trawl in the South Taranaki Bight region.

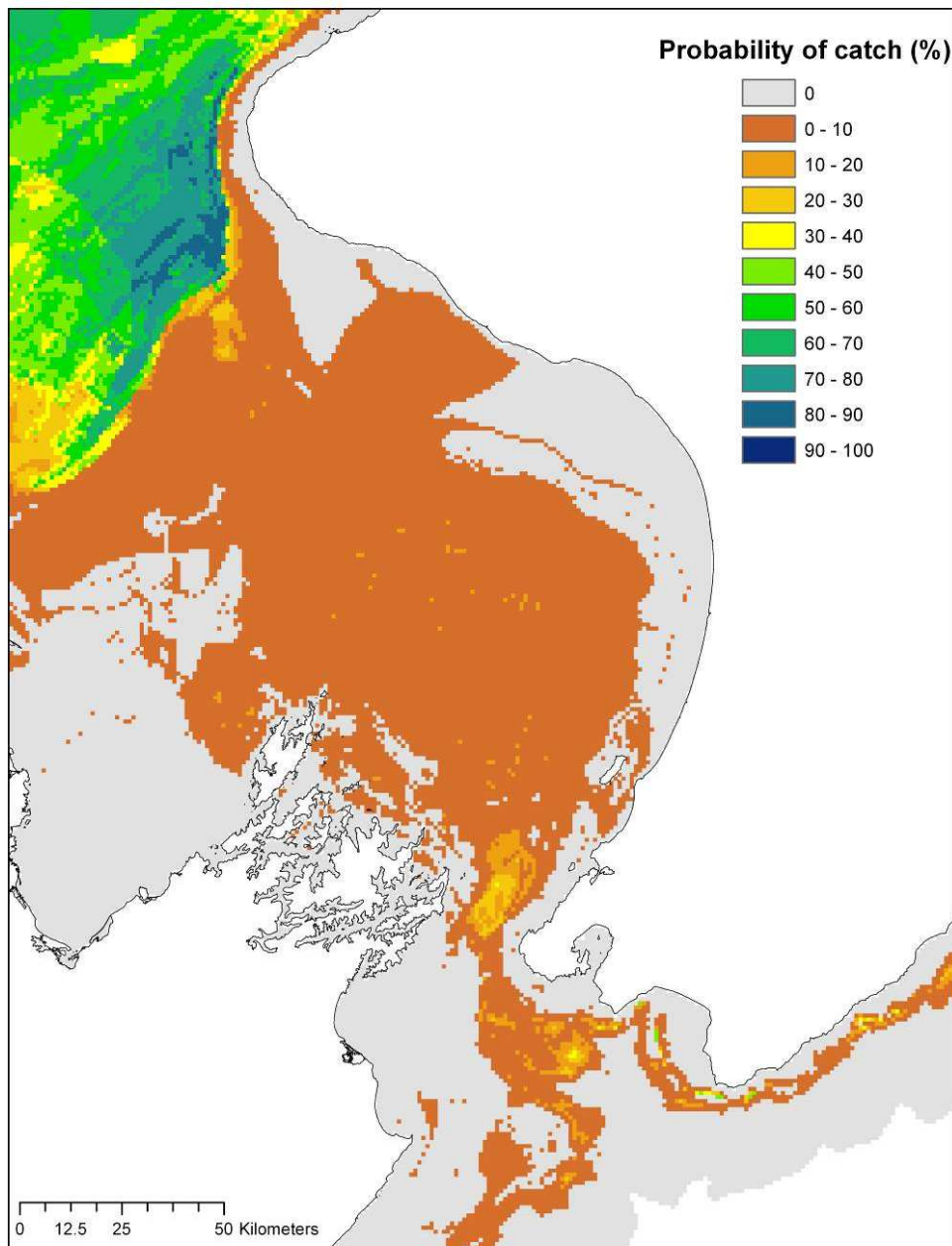


Figure A3.7: Probability of occurrence (%) of cucumber fish (*Chlorophthalmus nigripinnis*) in a demersal trawl in the South Taranaki Bight region.

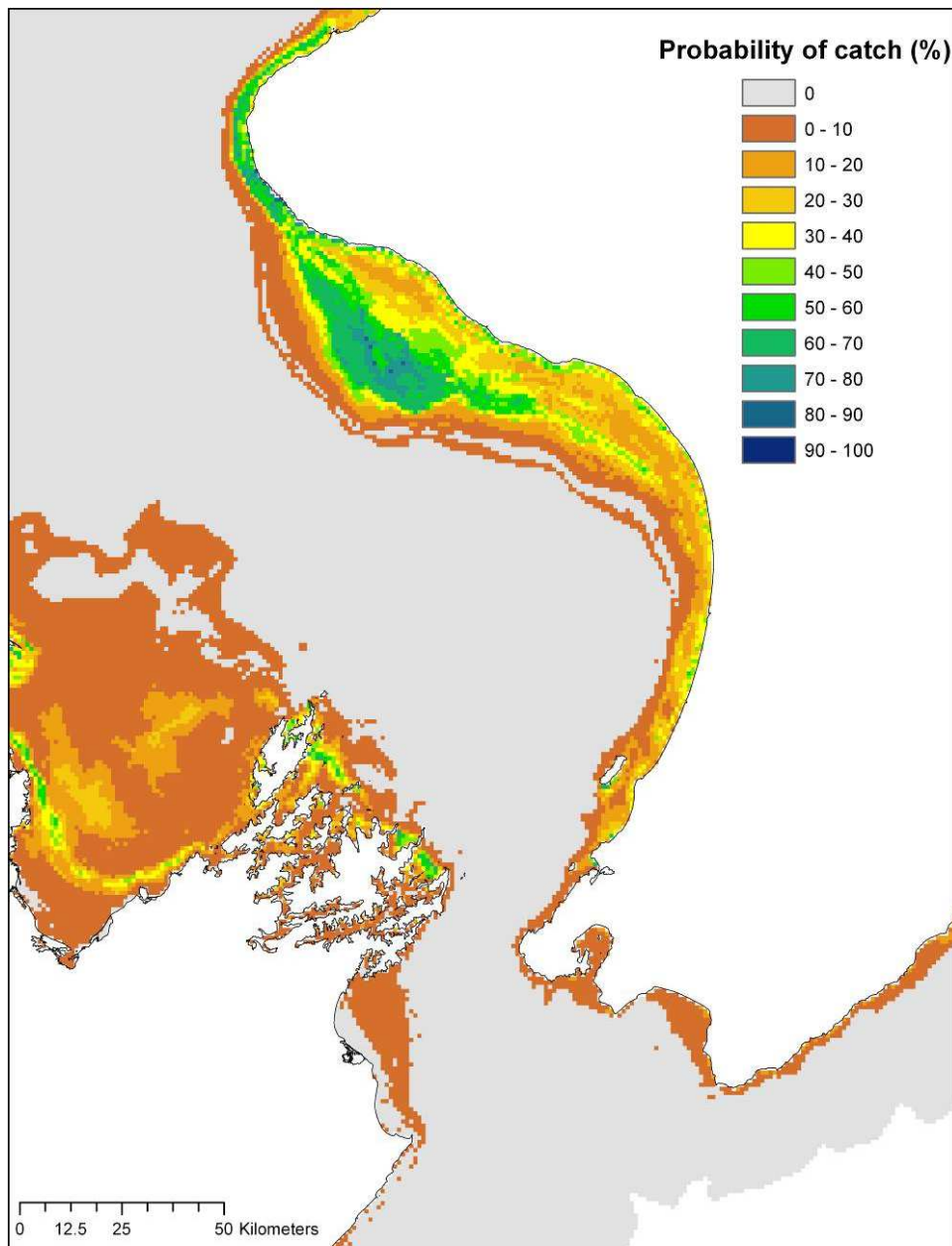


Figure A3.8: Probability of occurrence (%) of eagle Ray (*Myliobatis tenuicaudatus*) in a demersal trawl in the South Taranaki Bight region.

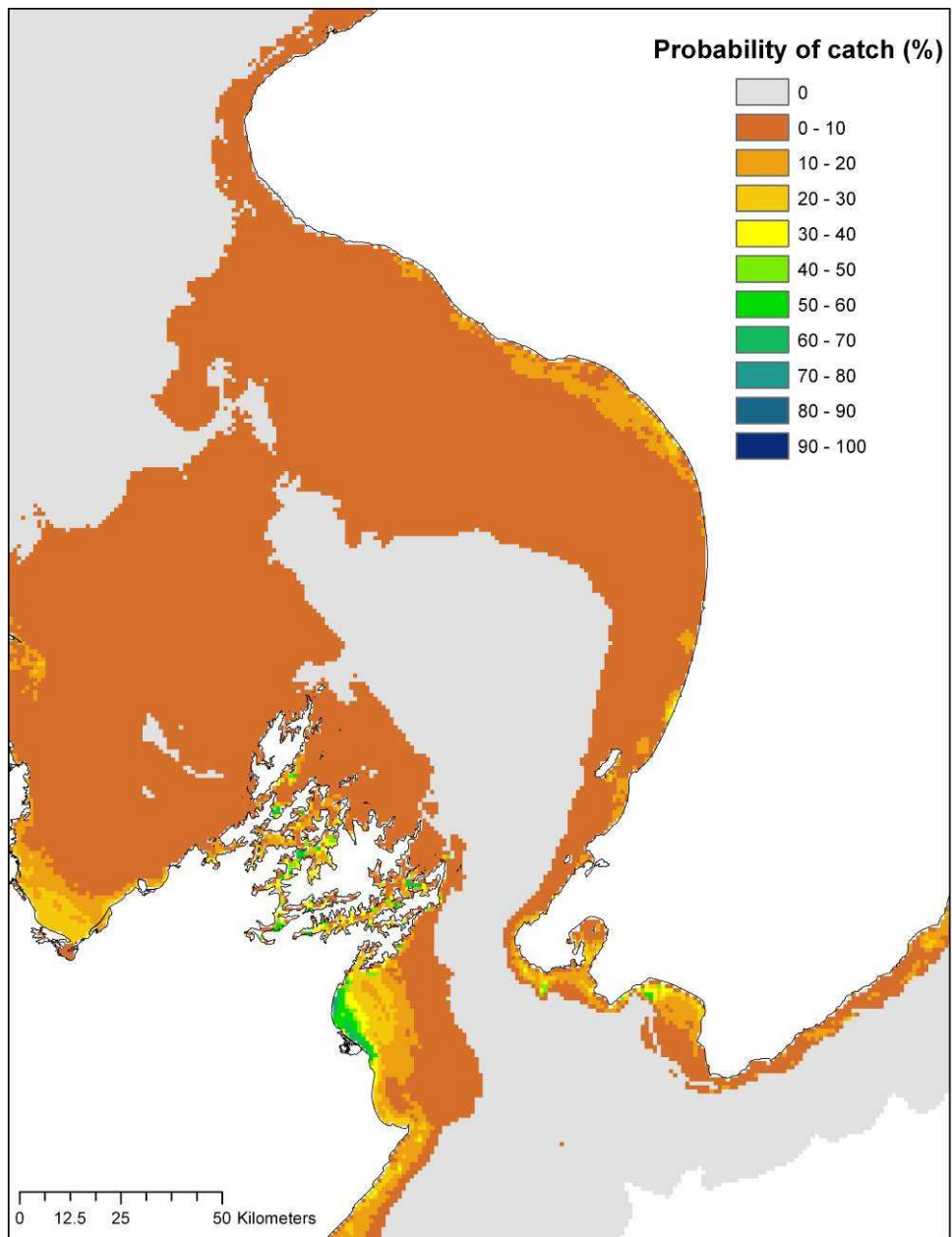


Figure A3.9: Probability of occurrence (%) of elephant fish (*Callorhinchus milii*) in a demersal trawl in the South Taranaki Bight region.

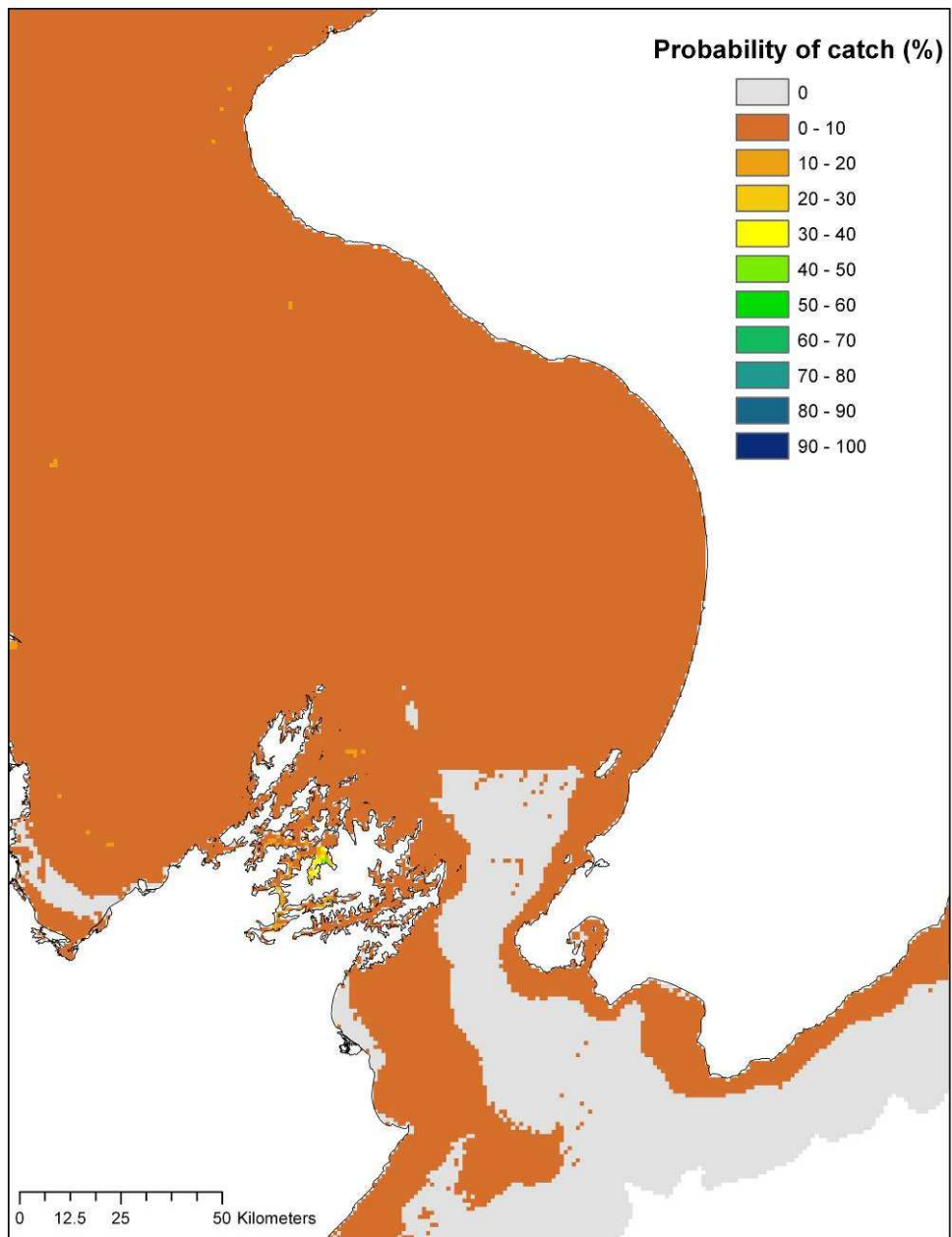


Figure A3.10: Probability of occurrence (%) of blue mackerel (*Scomber australasicus*) in a demersal trawl in the South Taranaki Bight region.

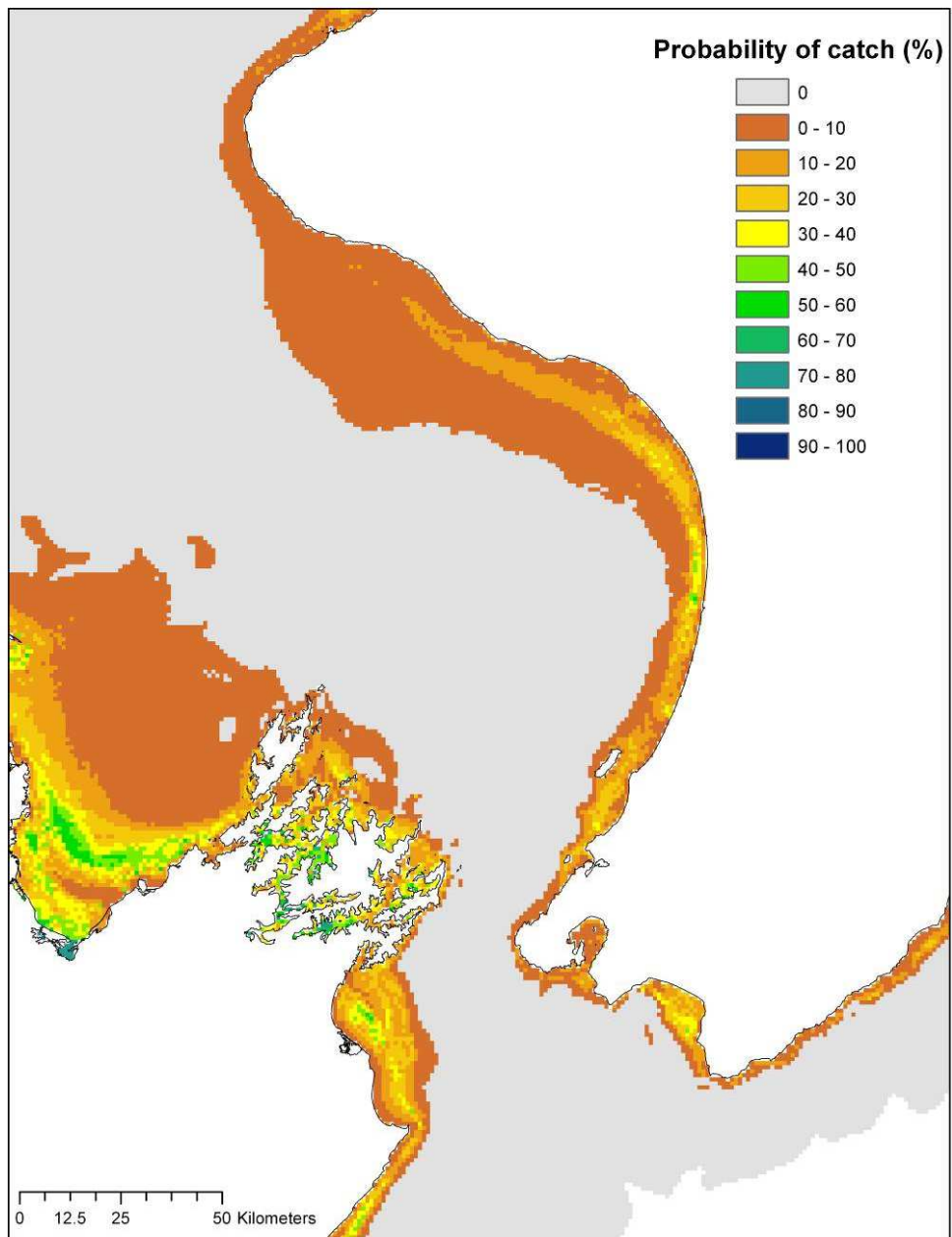


Figure A3.11: Probability of occurrence (%) of N.Z. sole (*Peltorhamphus novaezeelandiae*) in a demersal trawl in the South Taranaki Bight region.

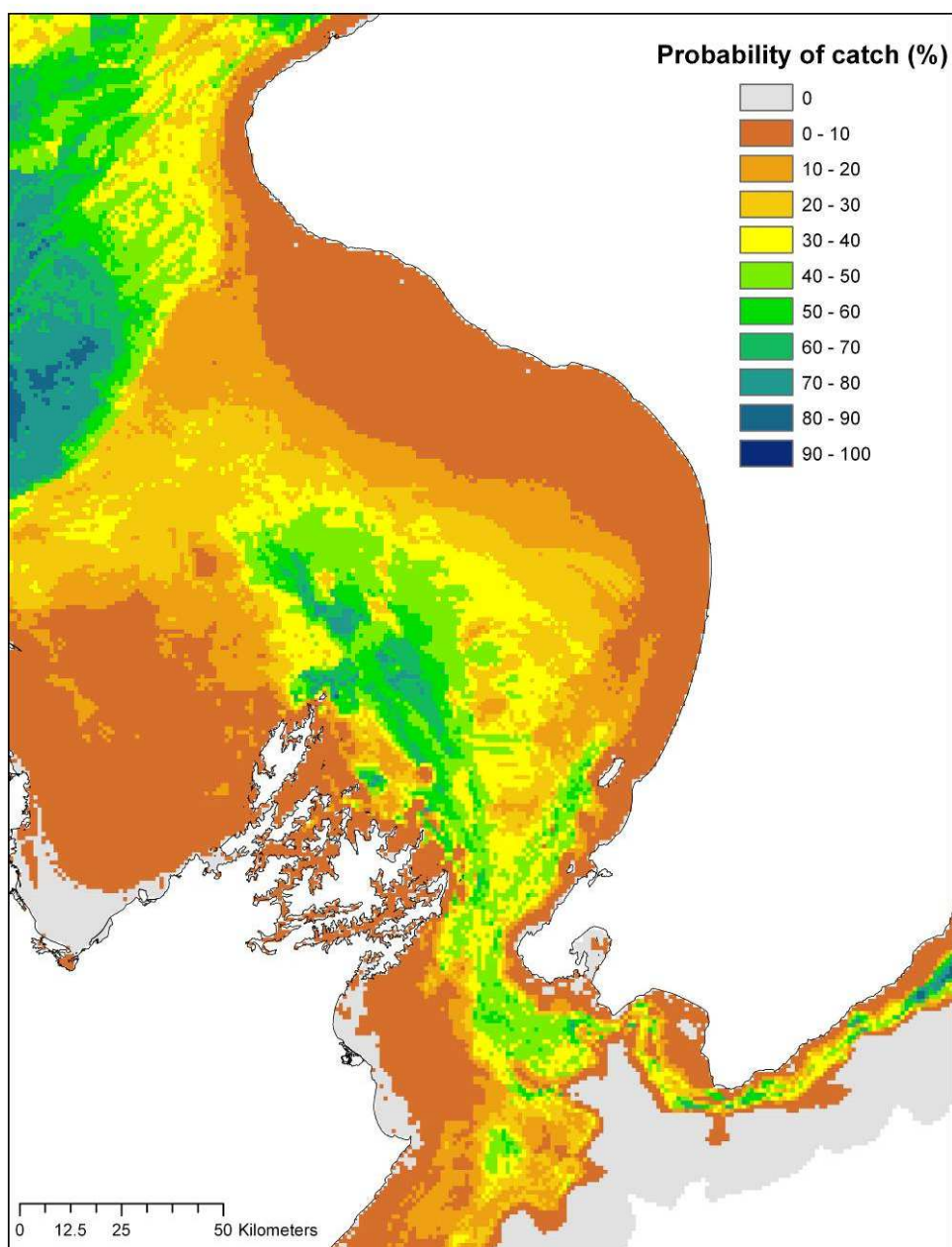


Figure A3.12: Probability of occurrence (%) of frostfish (*Lepidopus caudatus*) in a demersal trawl in the South Taranaki Bight region.

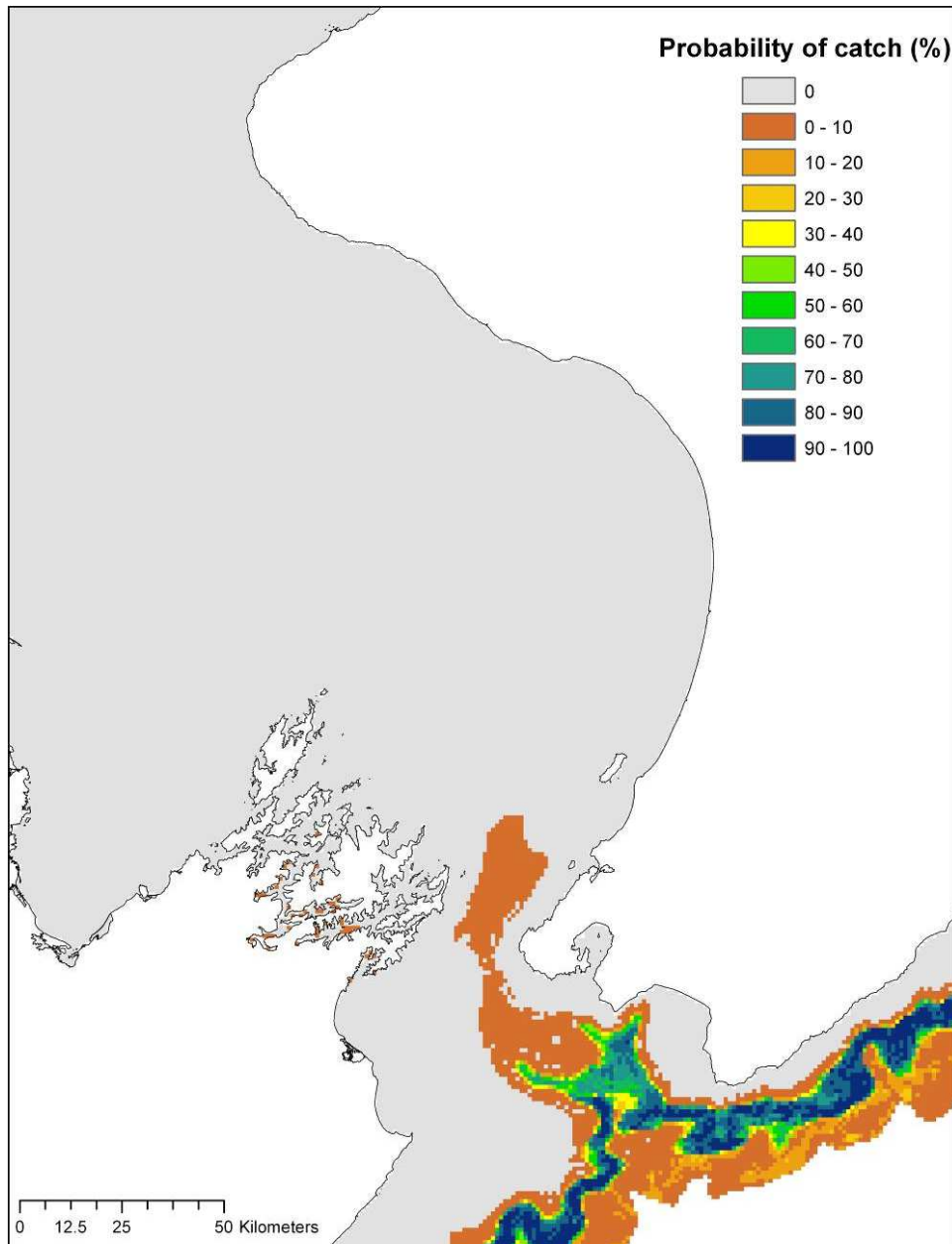


Figure A3.13: Probability of occurrence (%) of pale ghost shark (*Hydrolagus bemisi*) in a demersal trawl in the South Taranaki Bight region.

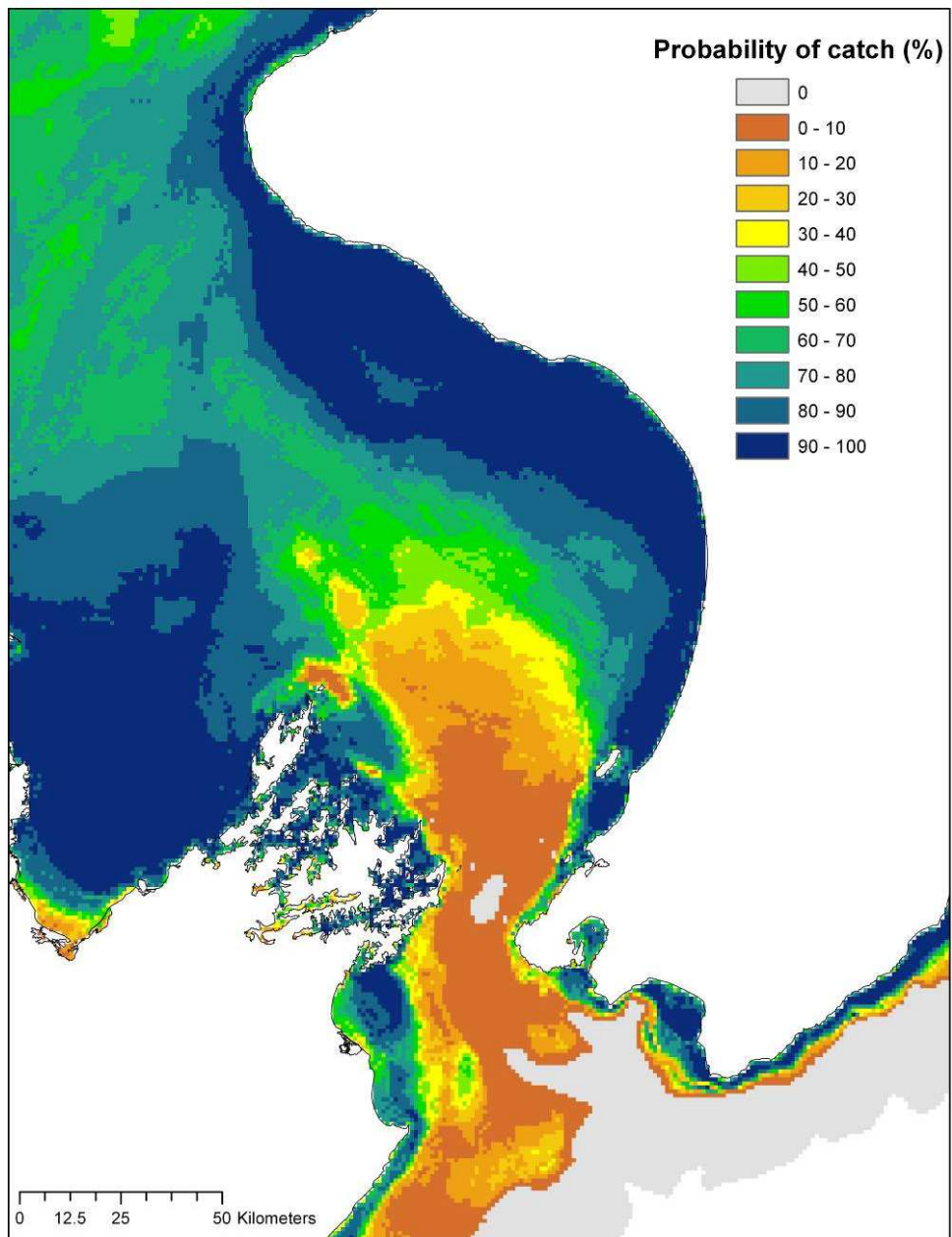


Figure A3.14: Probability of occurrence (%) of gurnard (*Chelidonichthys kumu*) in a demersal trawl in the South Taranaki Bight region.

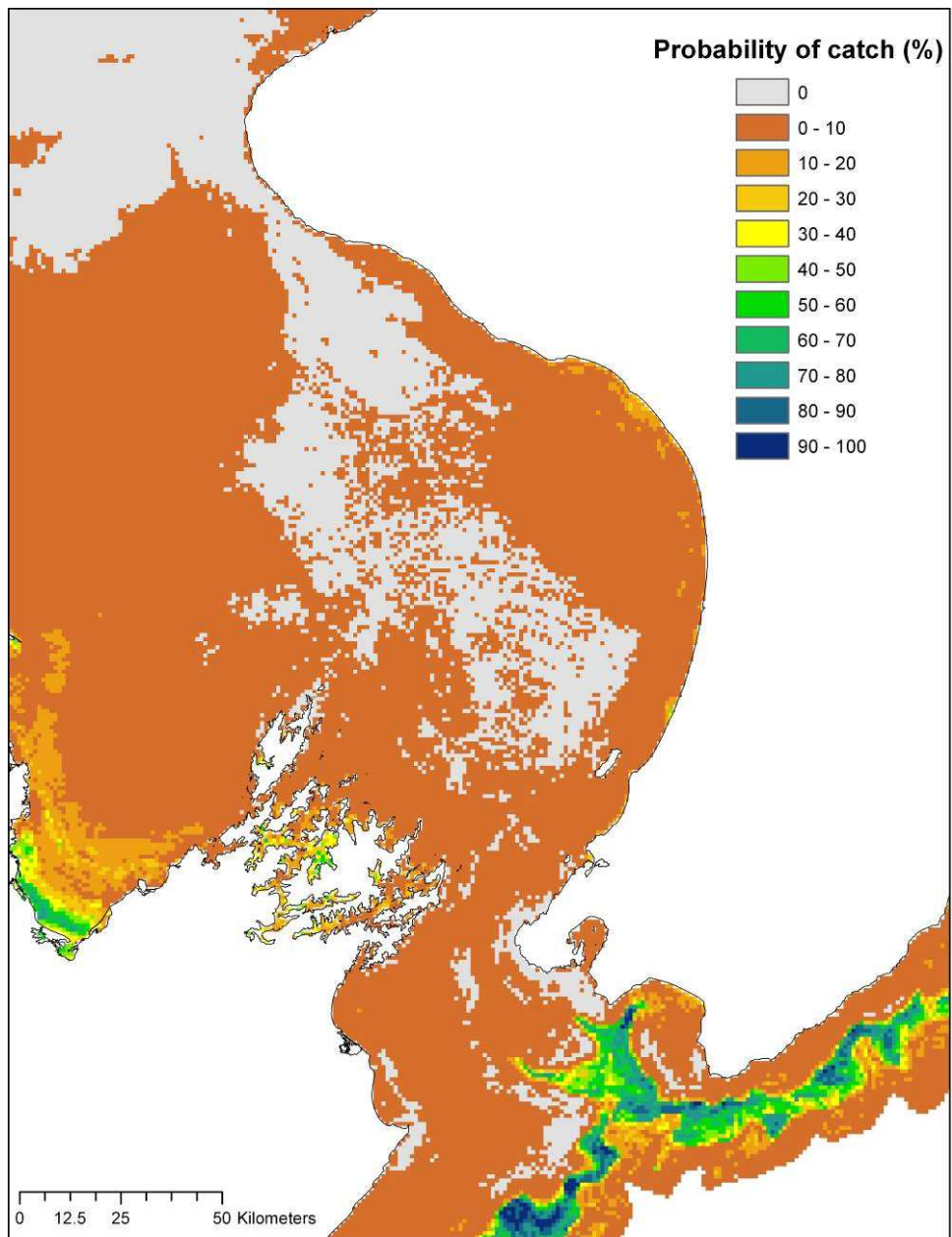


Figure A3.15: Probability of occurrence (%) of hake (*Merluccius australis*) in a demersal trawl in the South Taranaki Bight region.

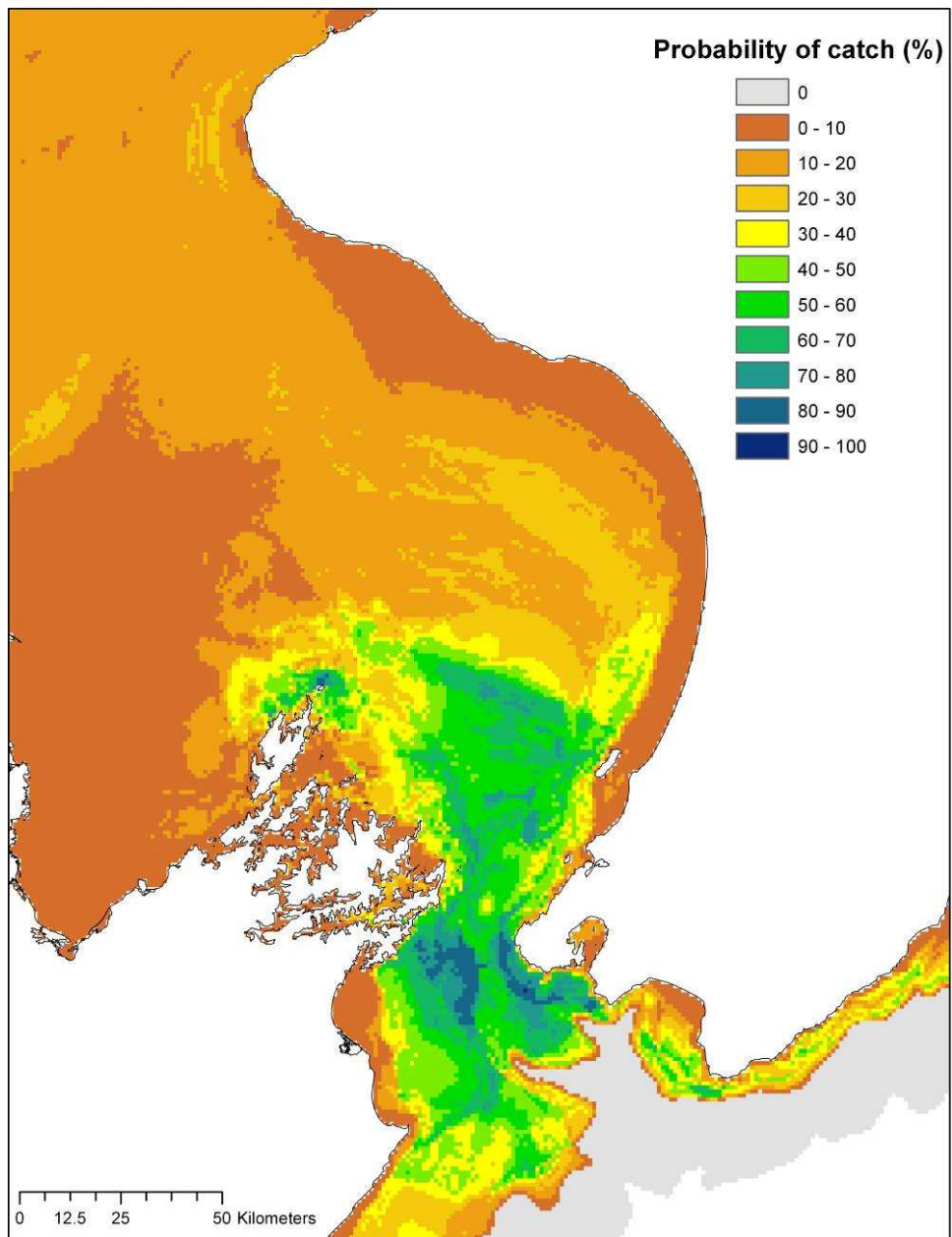


Figure A3.16: Probability of occurrence (%) of hapuka (*Polyprion oxygeneios*) in a demersal trawl in the South Taranaki Bight region.

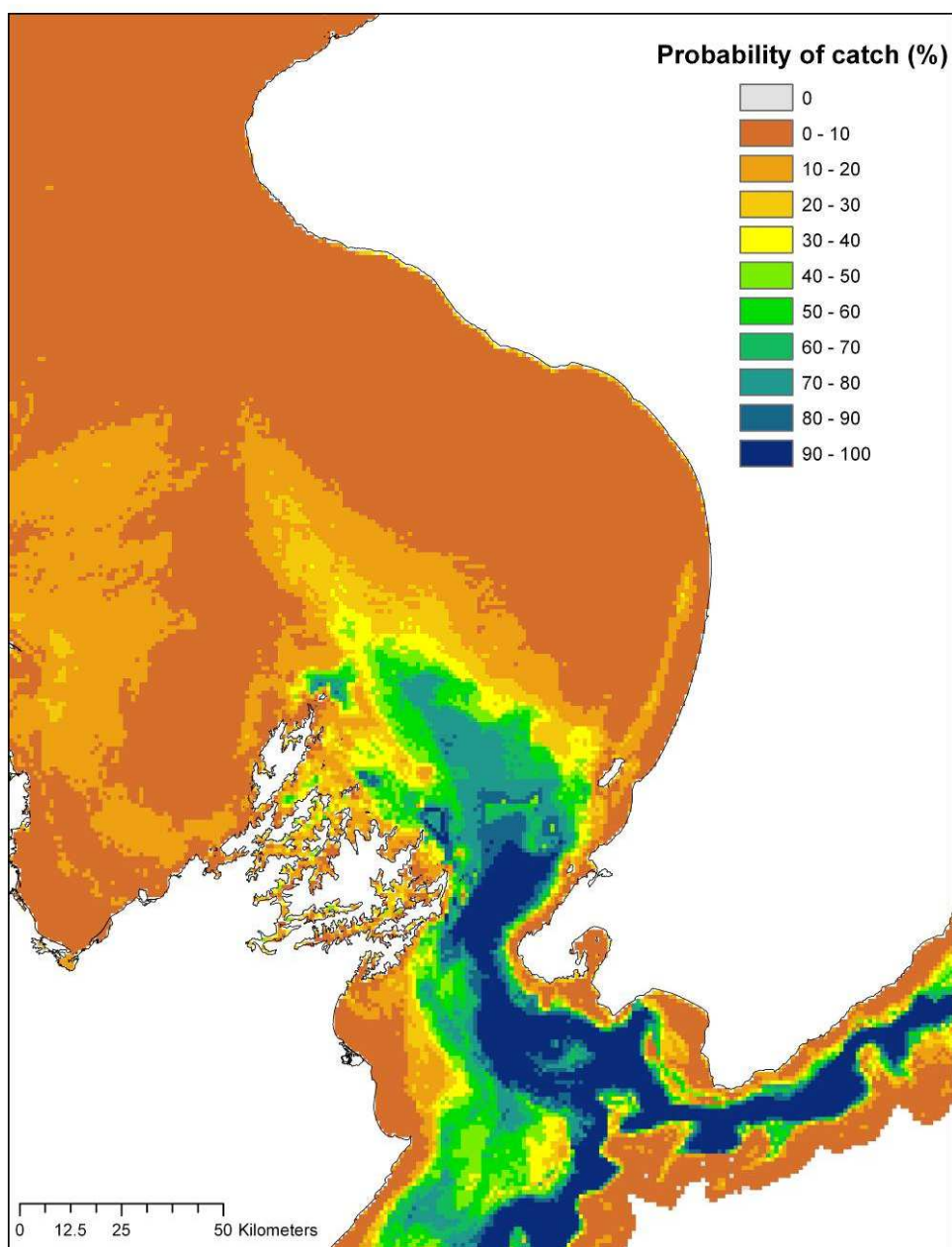


Figure A3.17: Probability of occurrence (%) of hoki (*Macruronus novaezelandiae*) in a demersal trawl in the South Taranaki Bight region.

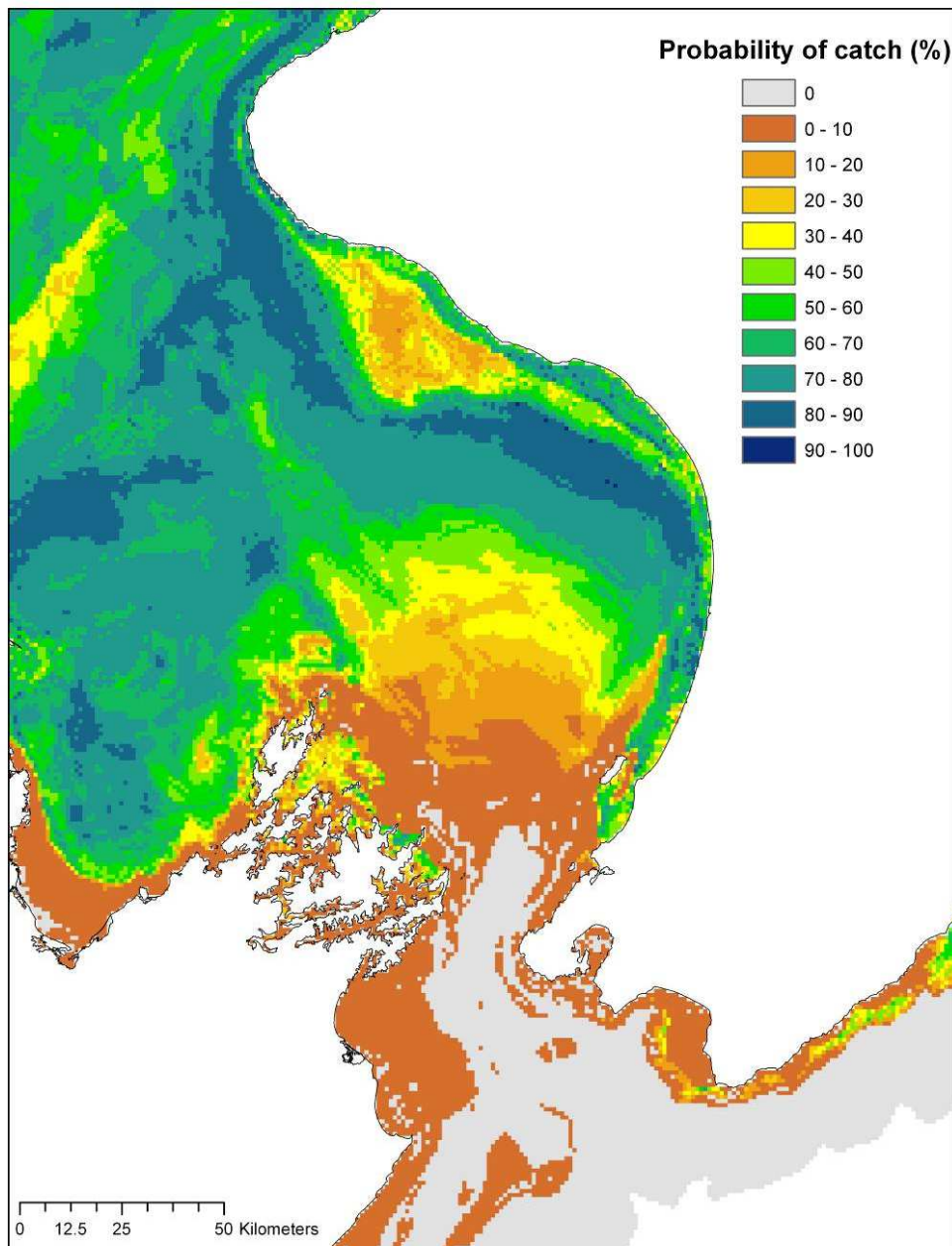


Figure A3.18: Probability of occurrence (%) of John dory (*Zeus faber*) in a demersal trawl in the South Taranaki Bight region.

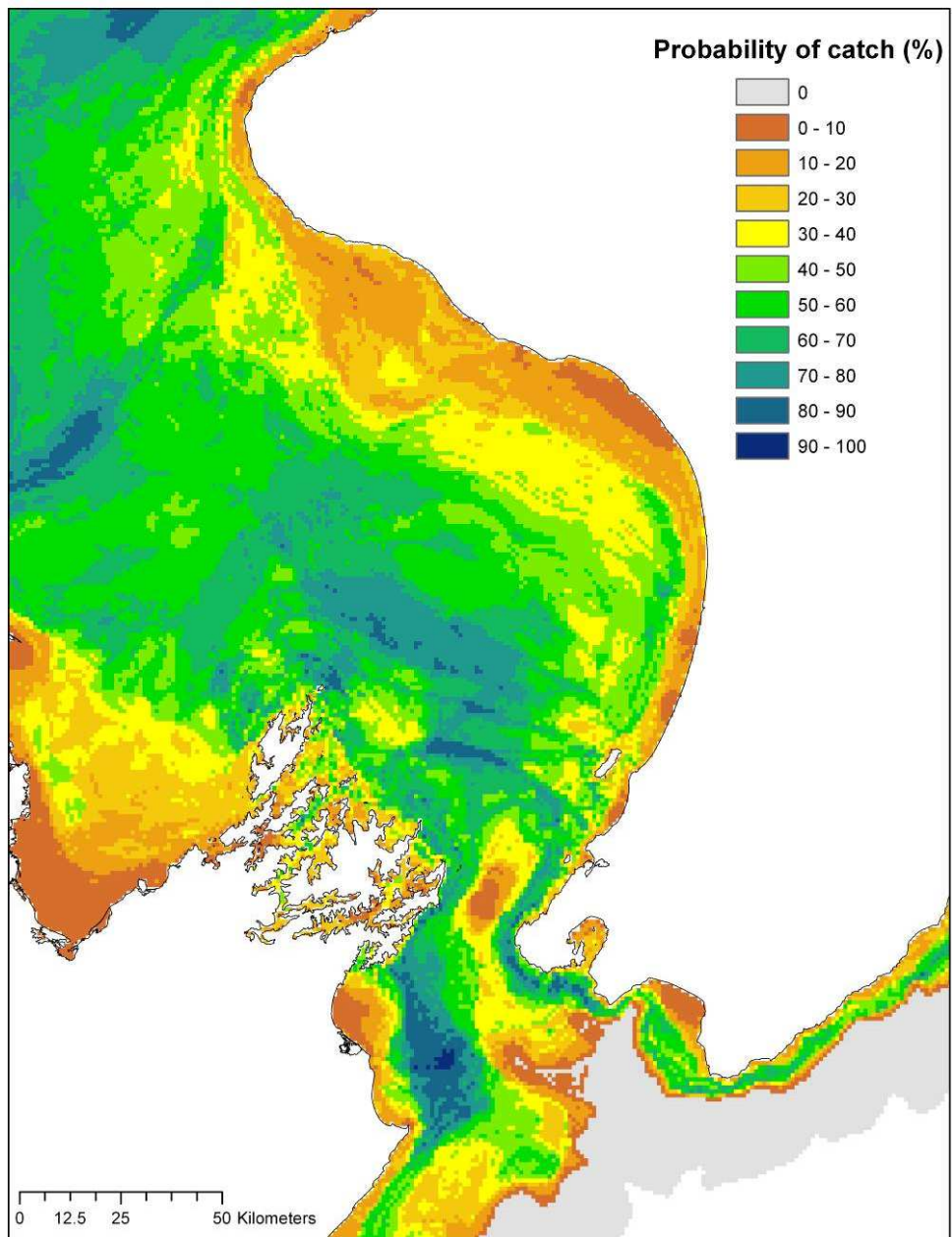


Figure A3.19: Probability of occurrence (%) of horse mackerel (*Trachurus declivis*) in a demersal trawl in the South Taranaki Bight region.

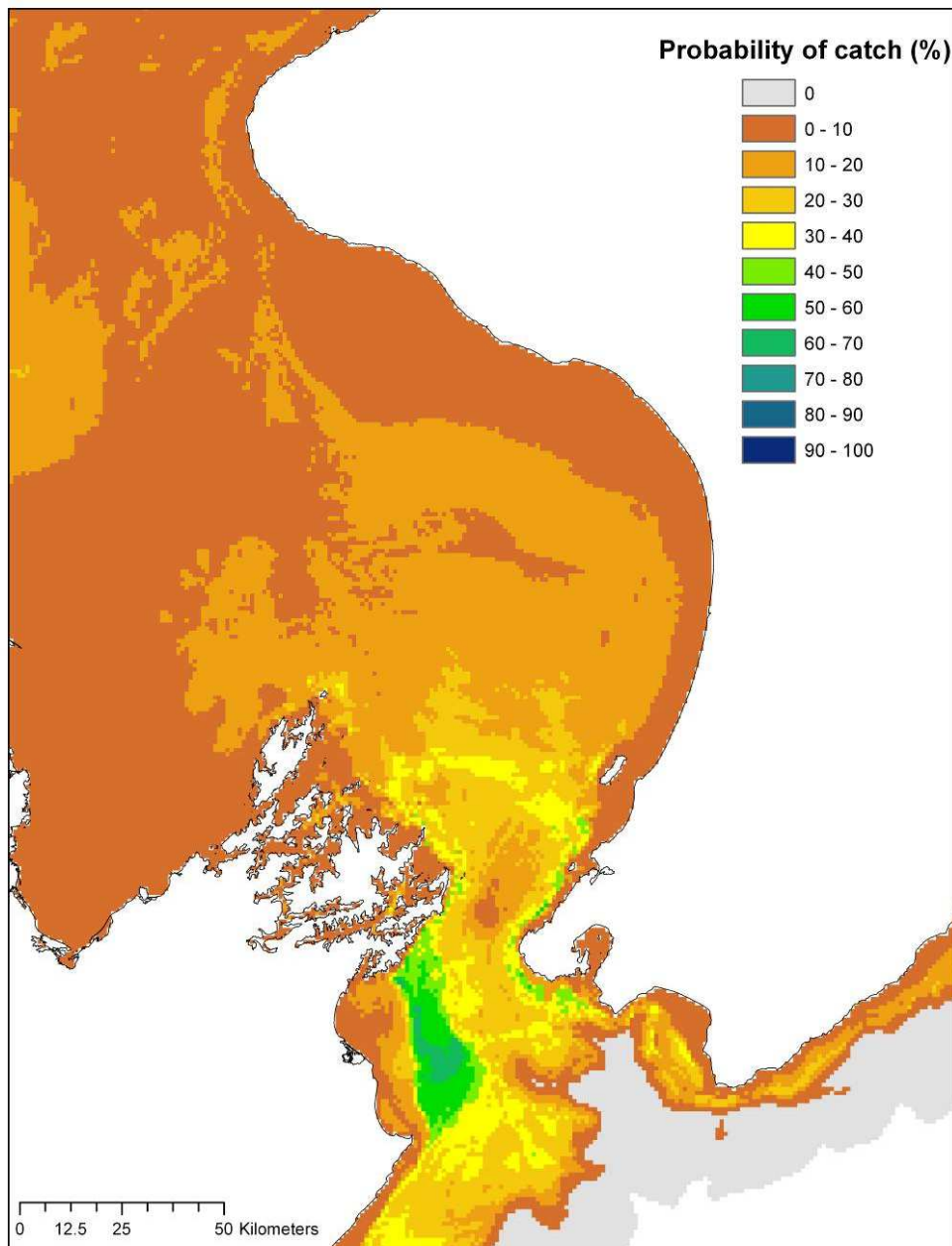


Figure A3.20: Probability of occurrence (%) of Murphys mackerel (*Trachurus symmertricus murphyi*) in a demersal trawl in the South Taranaki Bight region.

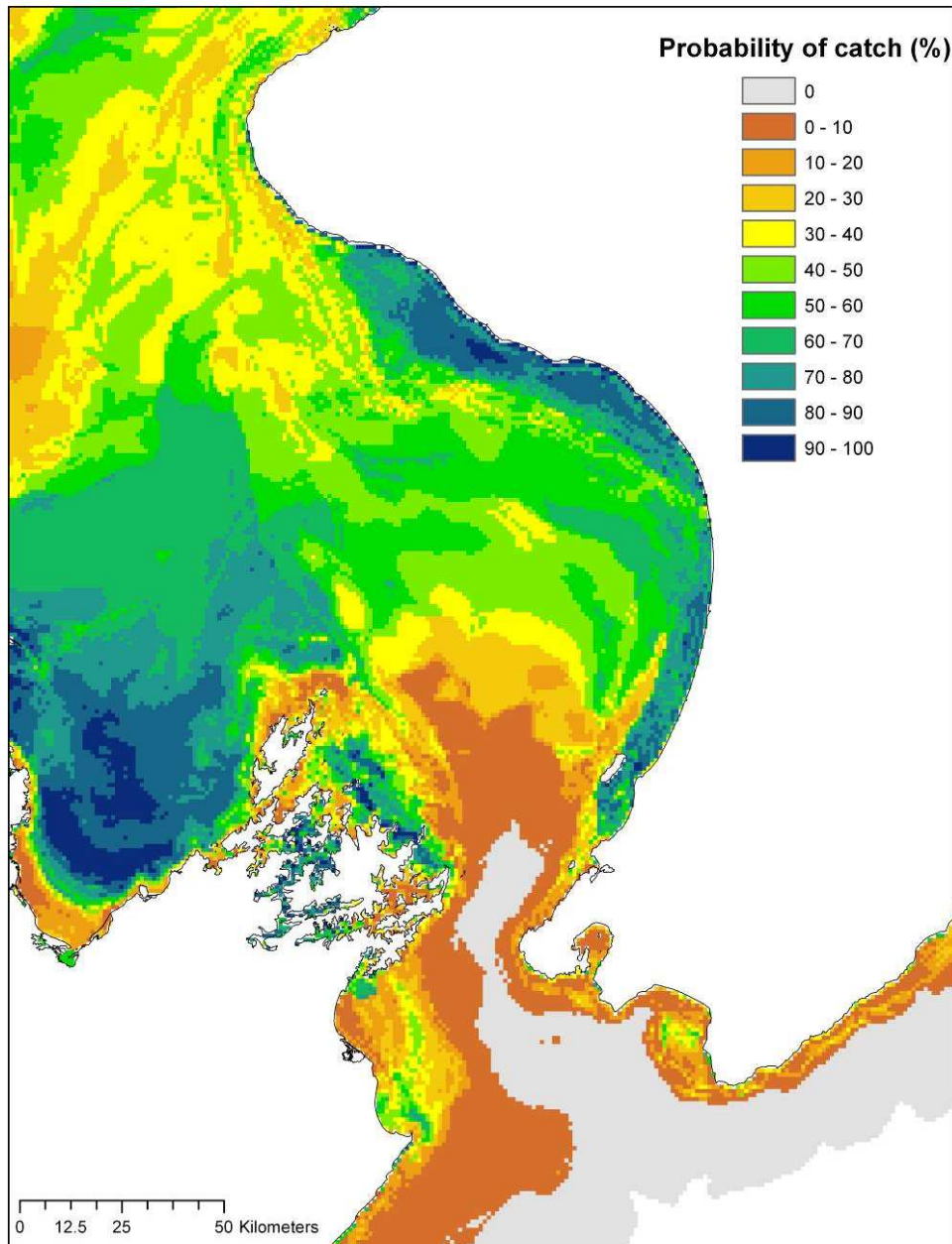


Figure A3.21: Probability of occurrence (%) of golden mackerel (*Trachurus novaezelandiae*) in a demersal trawl in the South Taranaki Bight region.

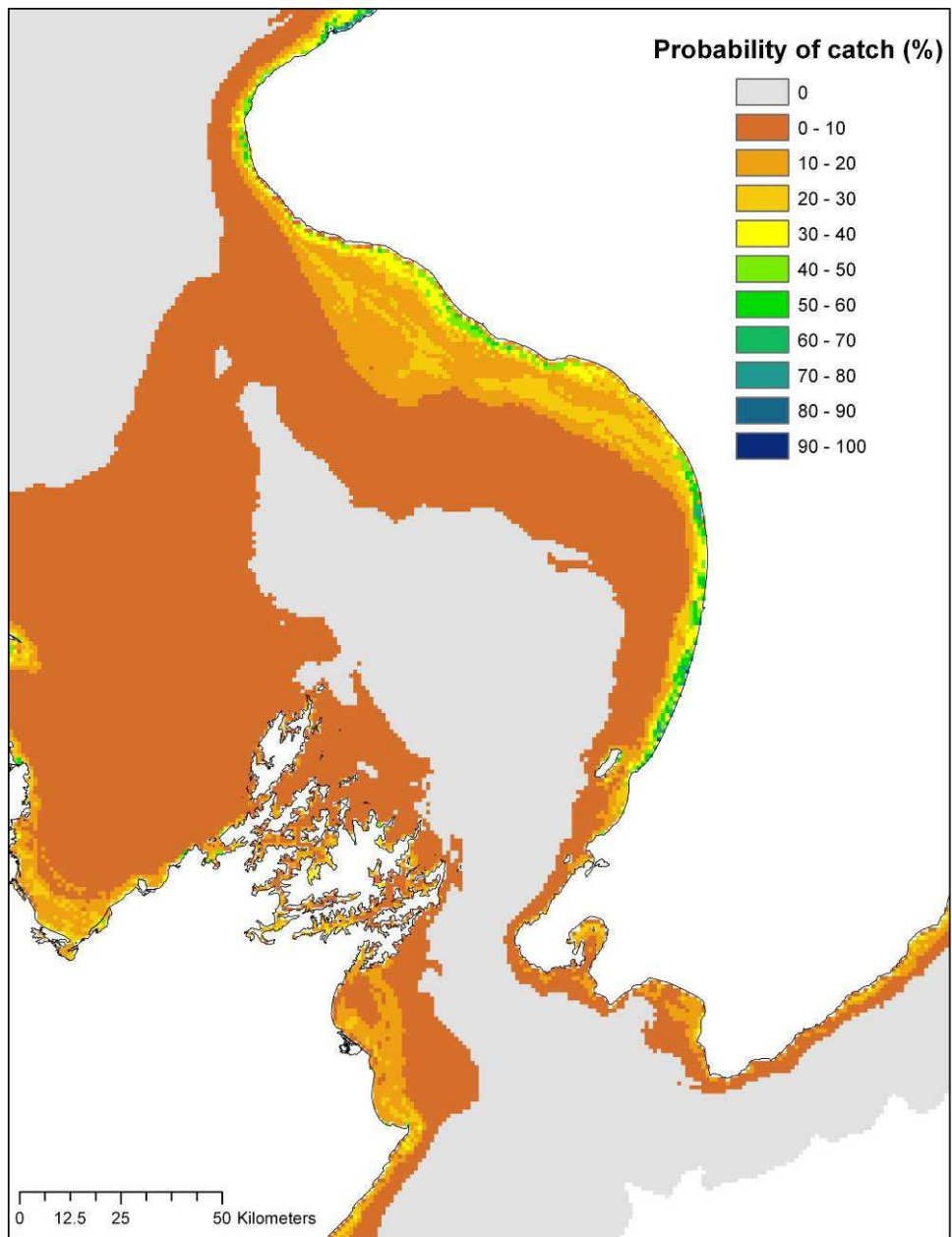


Figure A3.22: Probability of occurrence (%) of kahawai (*Arripis trutta*) in a demersal trawl in the South Taranaki Bight region.

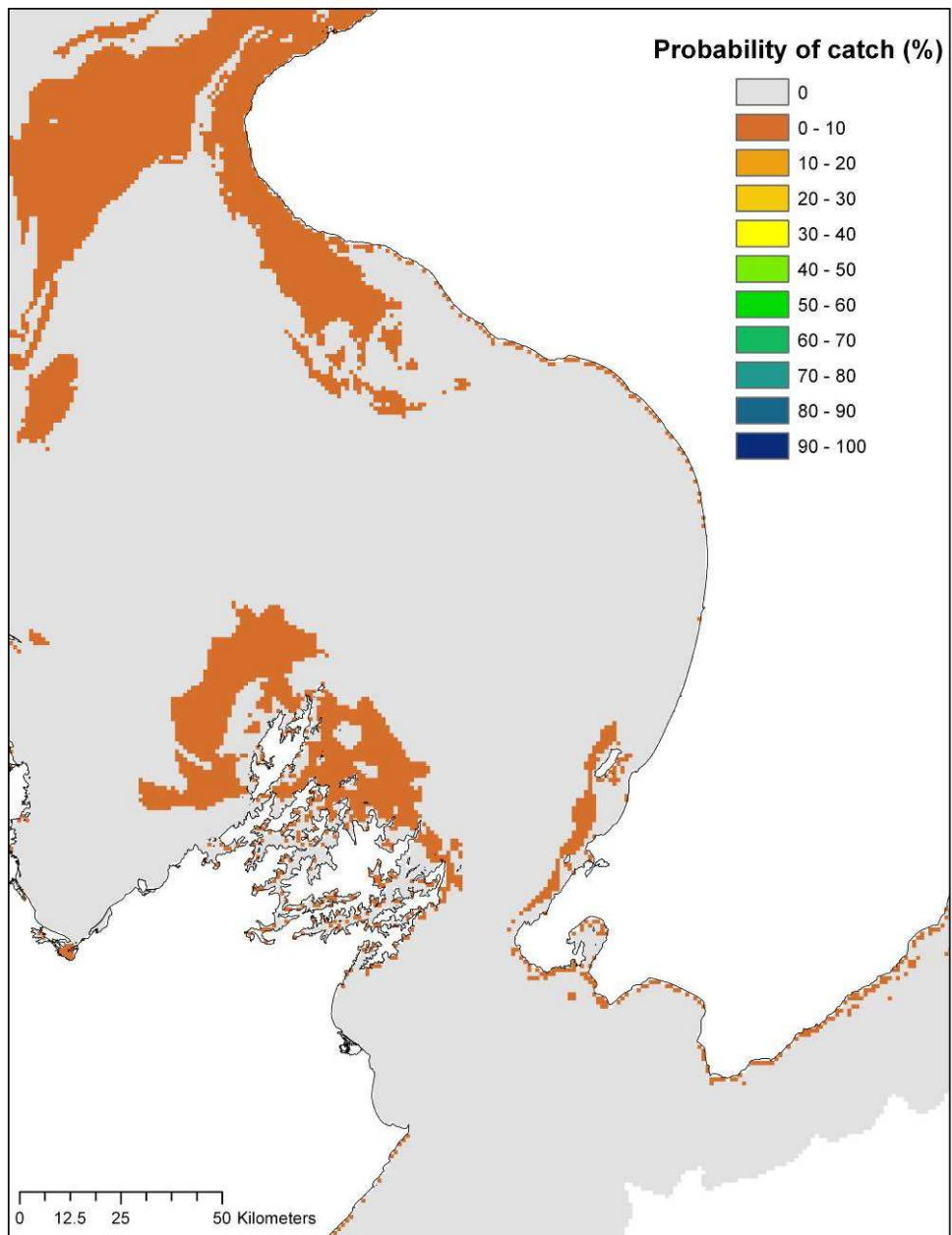


Figure A3.23: Probability of occurrence (%) of kingfish (*Seriola lalandi*) in a demersal trawl in the South Taranaki Bight region.

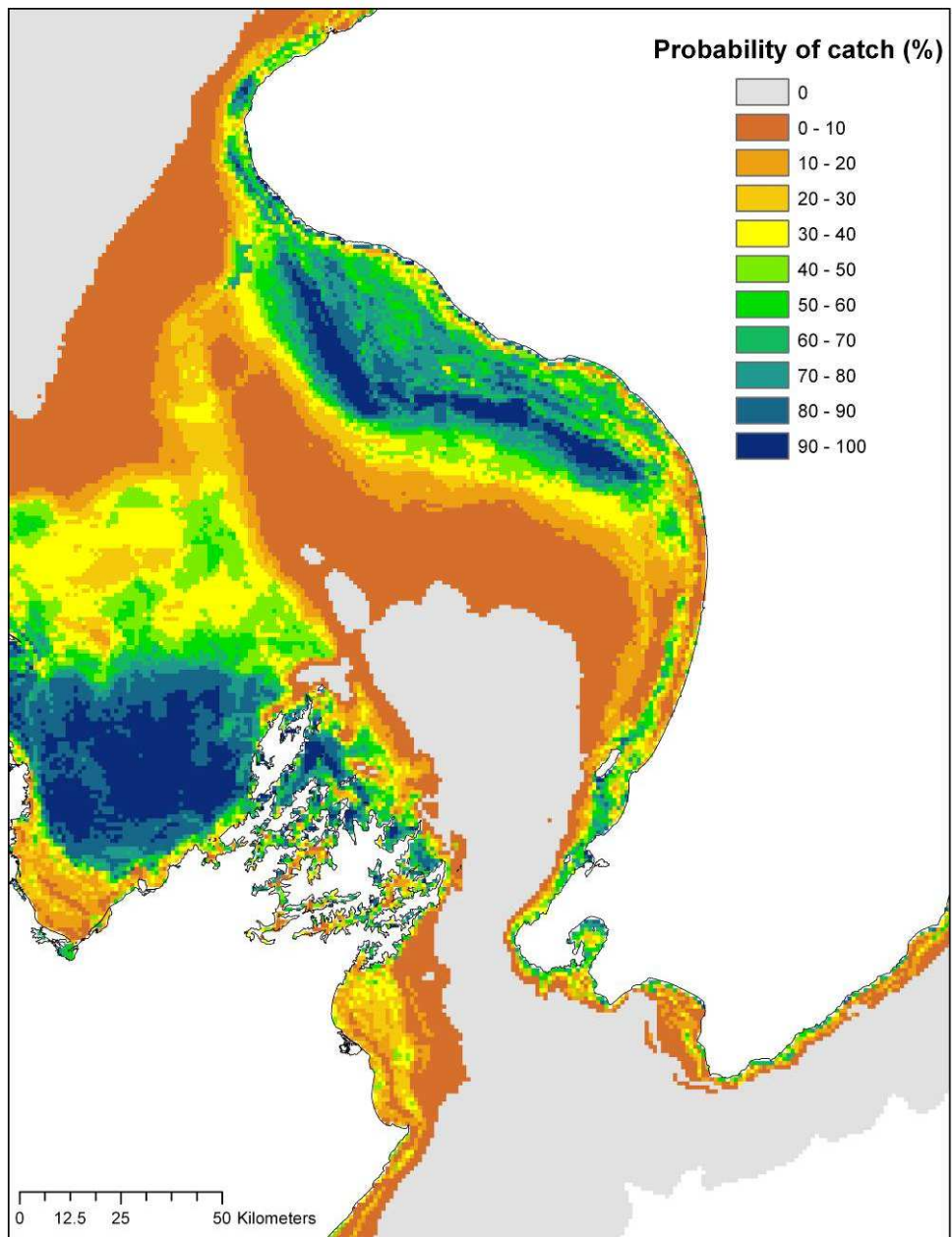


Figure A3.24: Probability of occurrence (%) of leatherjacket (*Parika scaber*) in a demersal trawl in the South Taranaki Bight region.

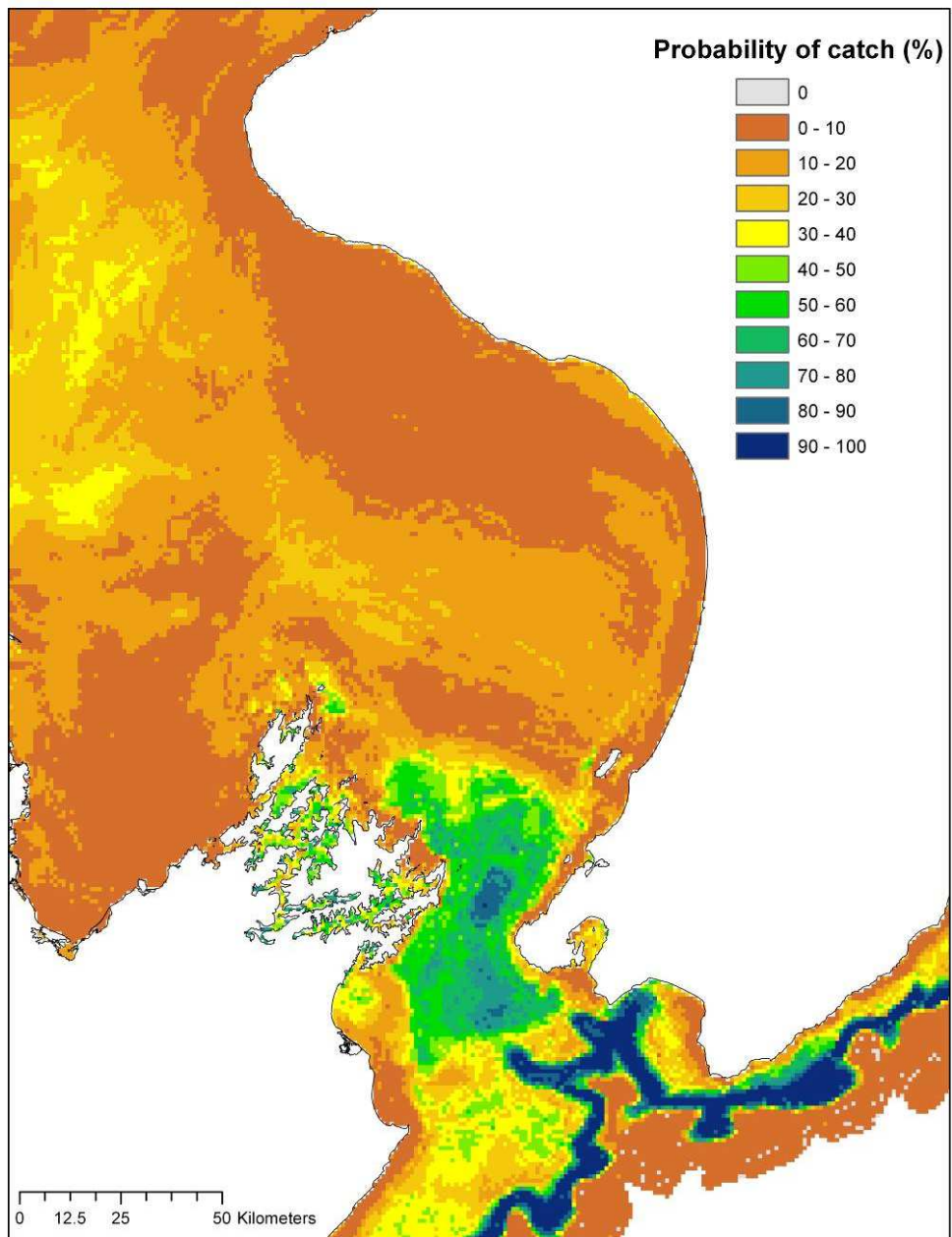


Figure A3.25: Probability of occurrence (%) of ling (*Genypterus blacodes*) in a demersal trawl in the South Taranaki Bight region.

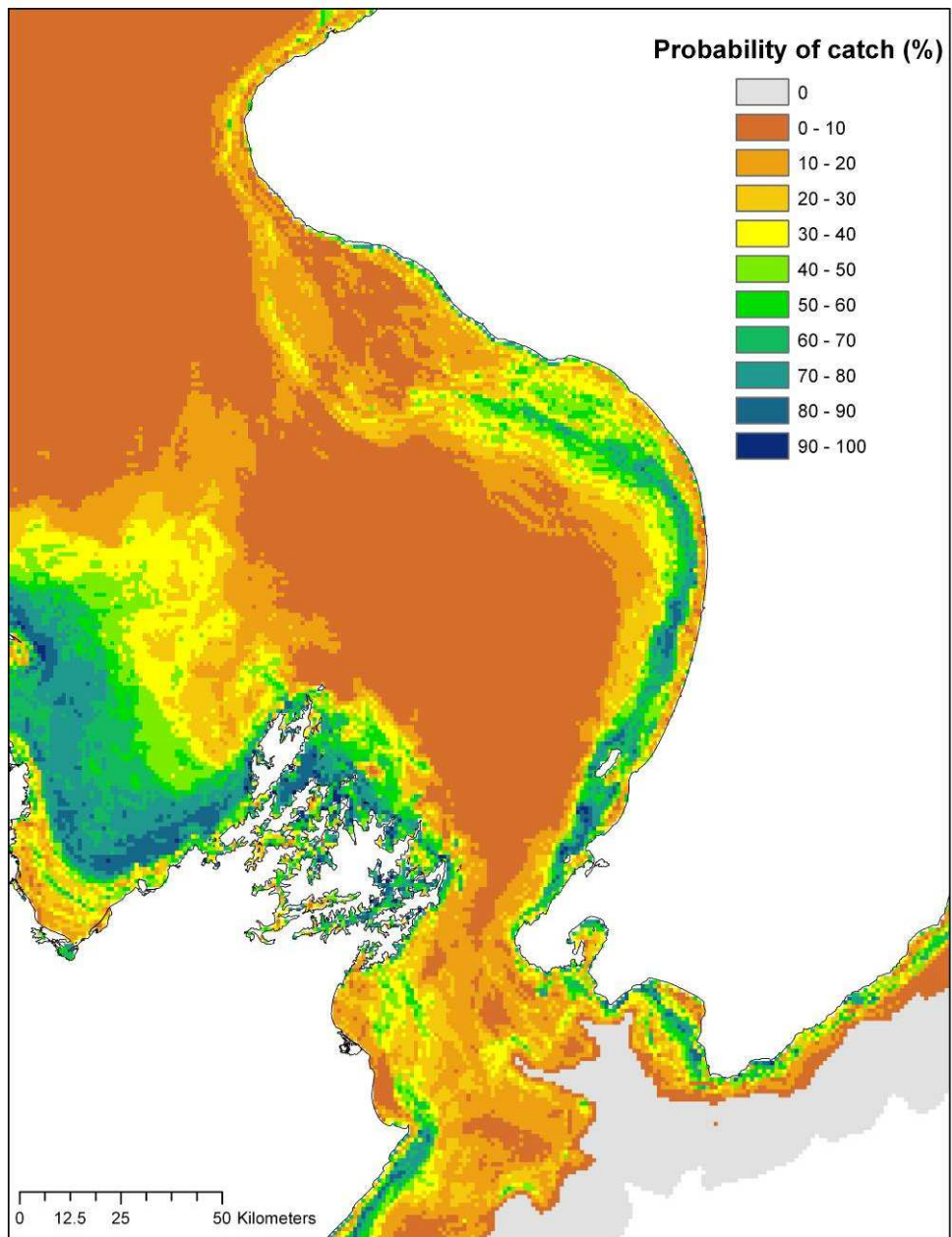


Figure A3.26: Probability of occurrence (%) of lemon sole (*Pelotretis flavilatus*) in a demersal trawl in the South Taranaki Bight region.

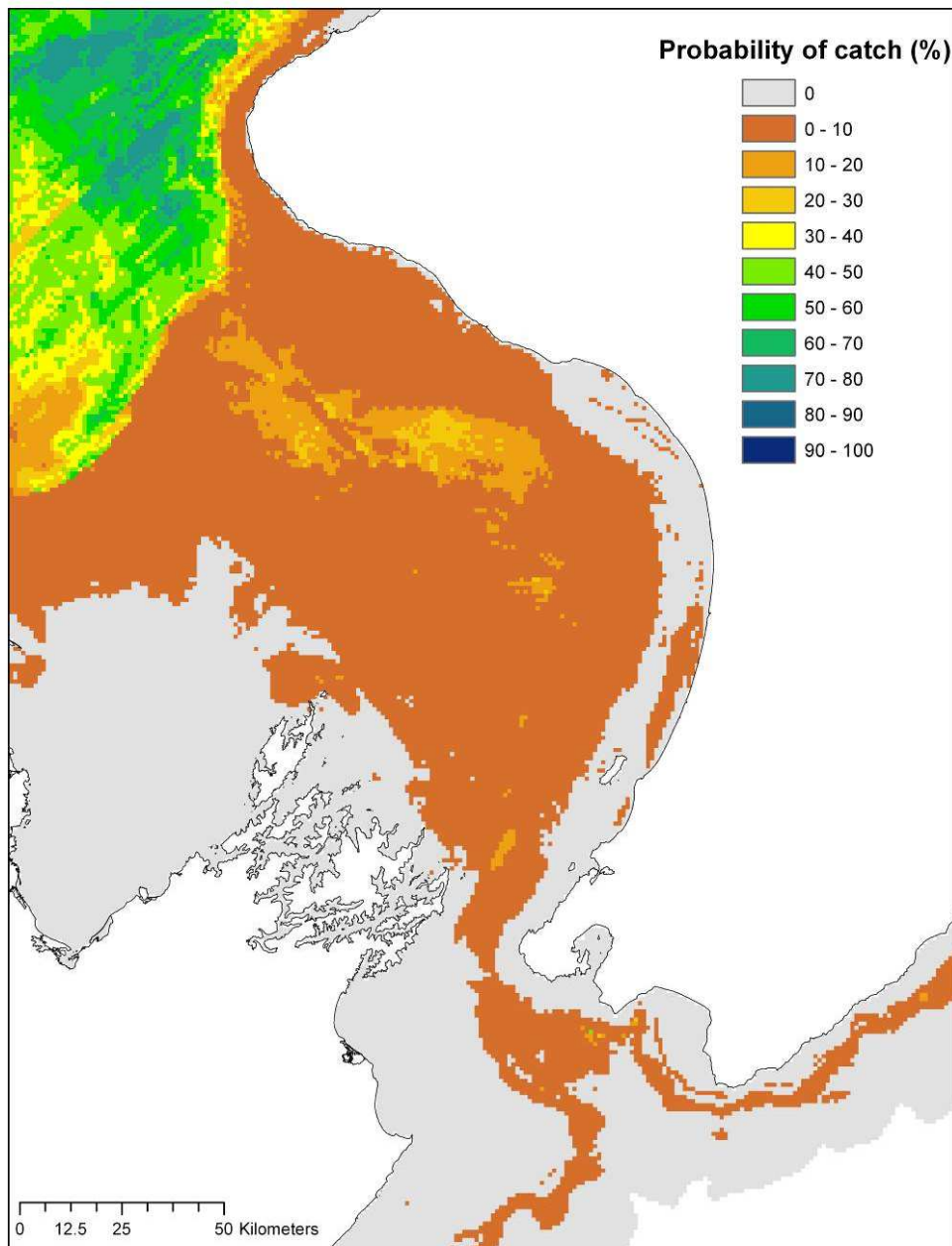


Figure A3.27: Probability of occurrence (%) of northern spiny dogfish (*Squalus griffini*) in a demersal trawl in the South Taranaki Bight region.

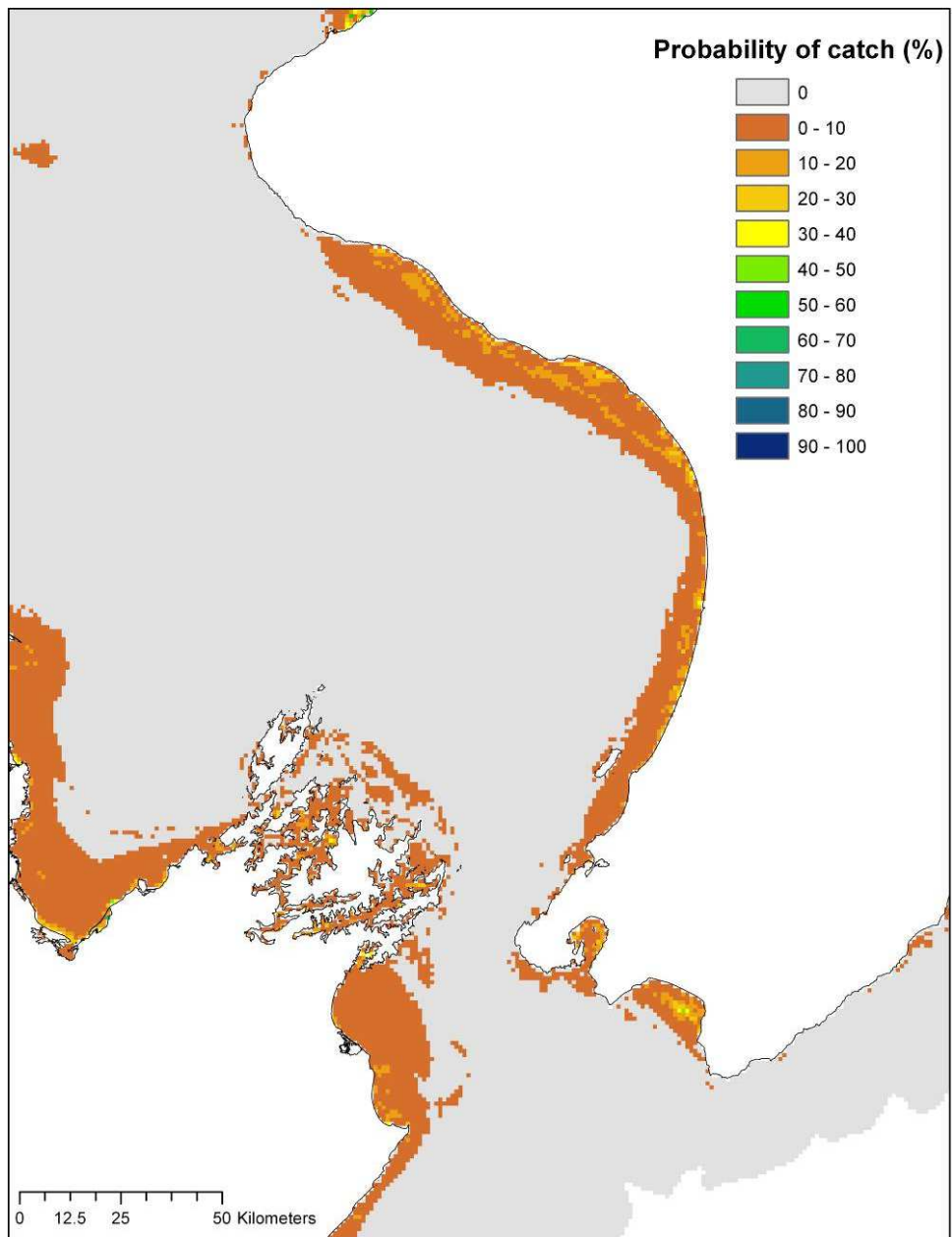


Figure A3.28: Probability of occurrence (%) of ahuru (*Auchenoceros punctatus*) in a demersal trawl in the South Taranaki Bight region.

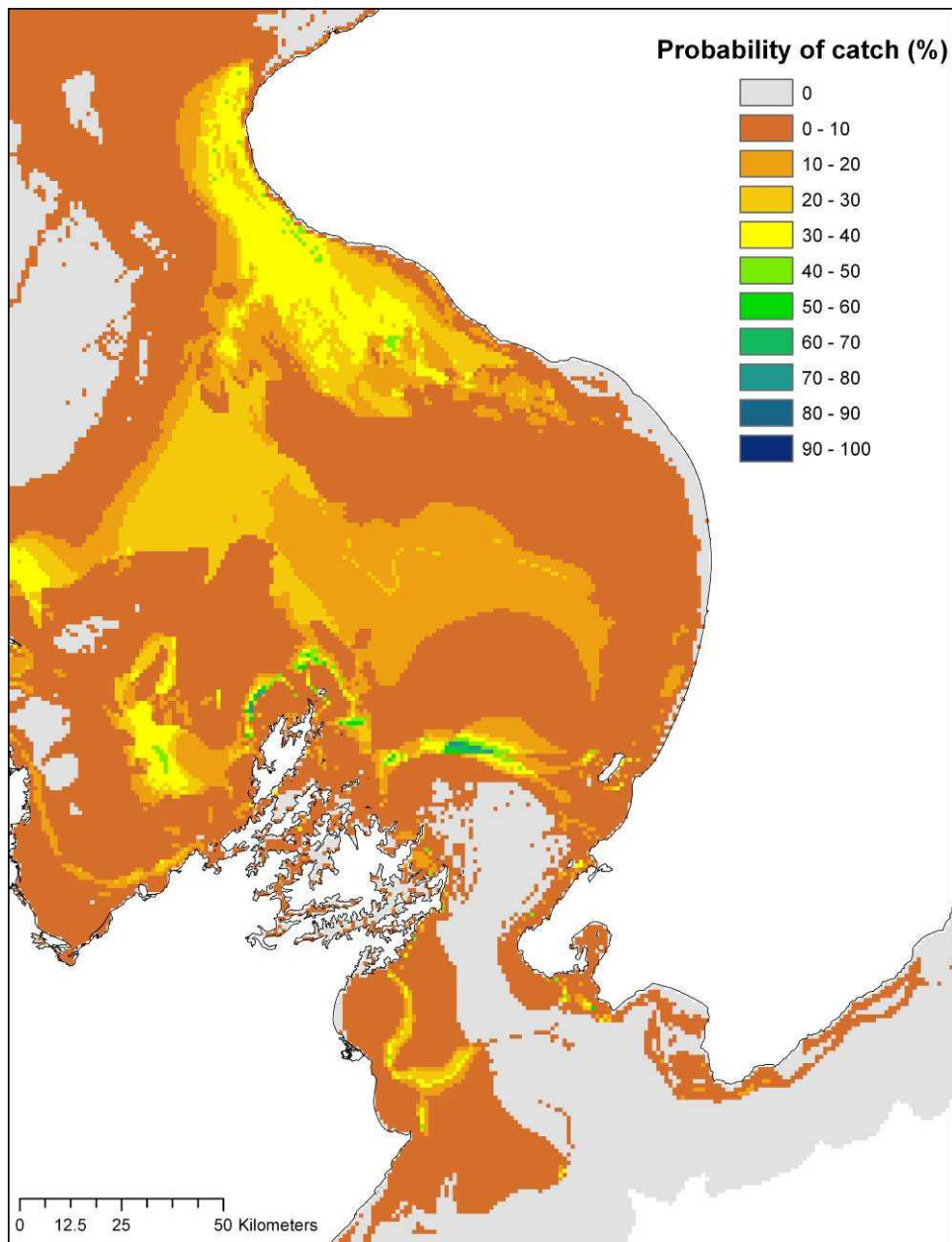


Figure A3.29: Probability of occurrence (%) of porcupine fish (*Allomycterus jaculiferus*) in a demersal trawl in the South Taranaki Bight region.

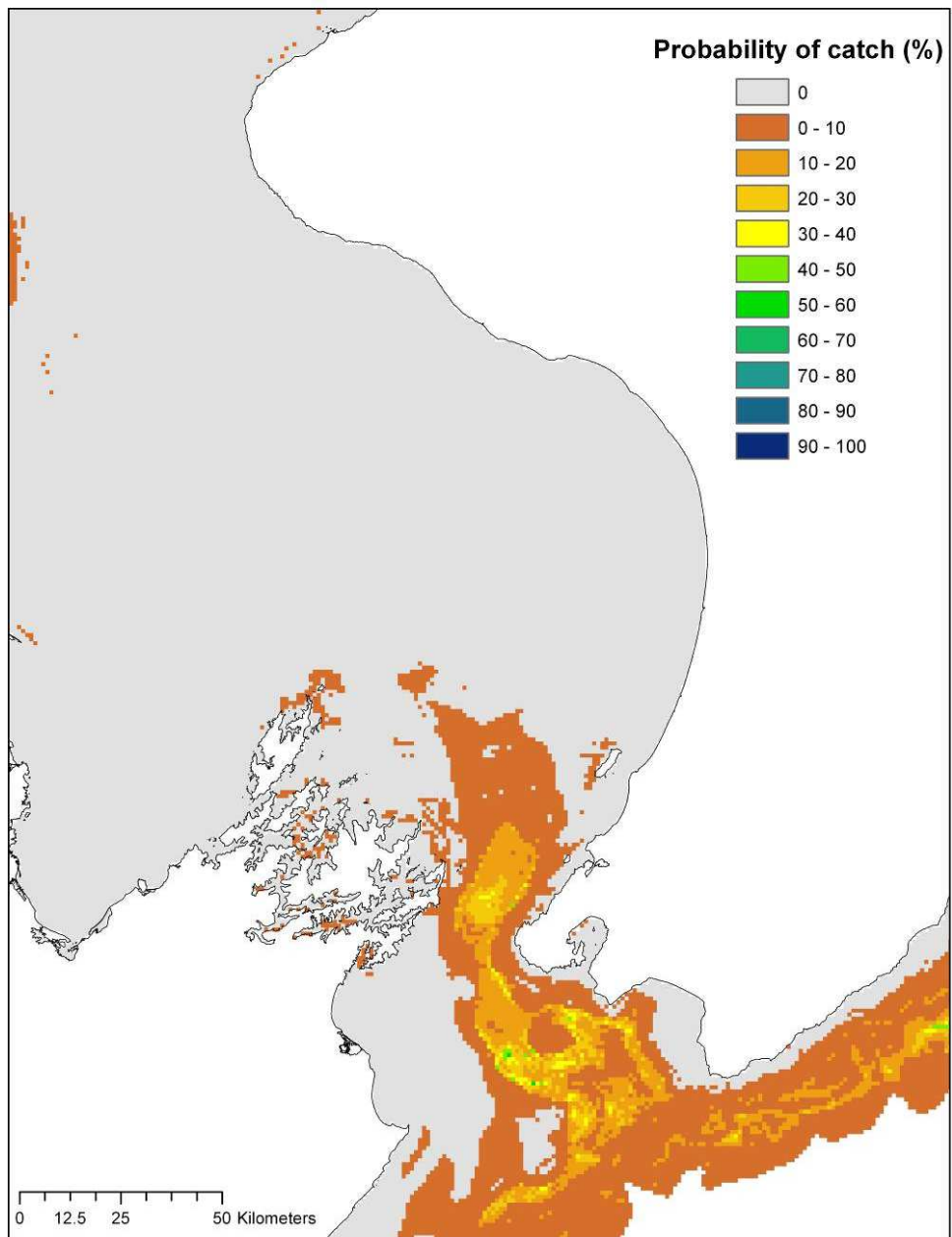


Figure A3.30: Probability of occurrence (%) of Rays bream (*Brama brama*) in a demersal trawl in the South Taranaki Bight region.

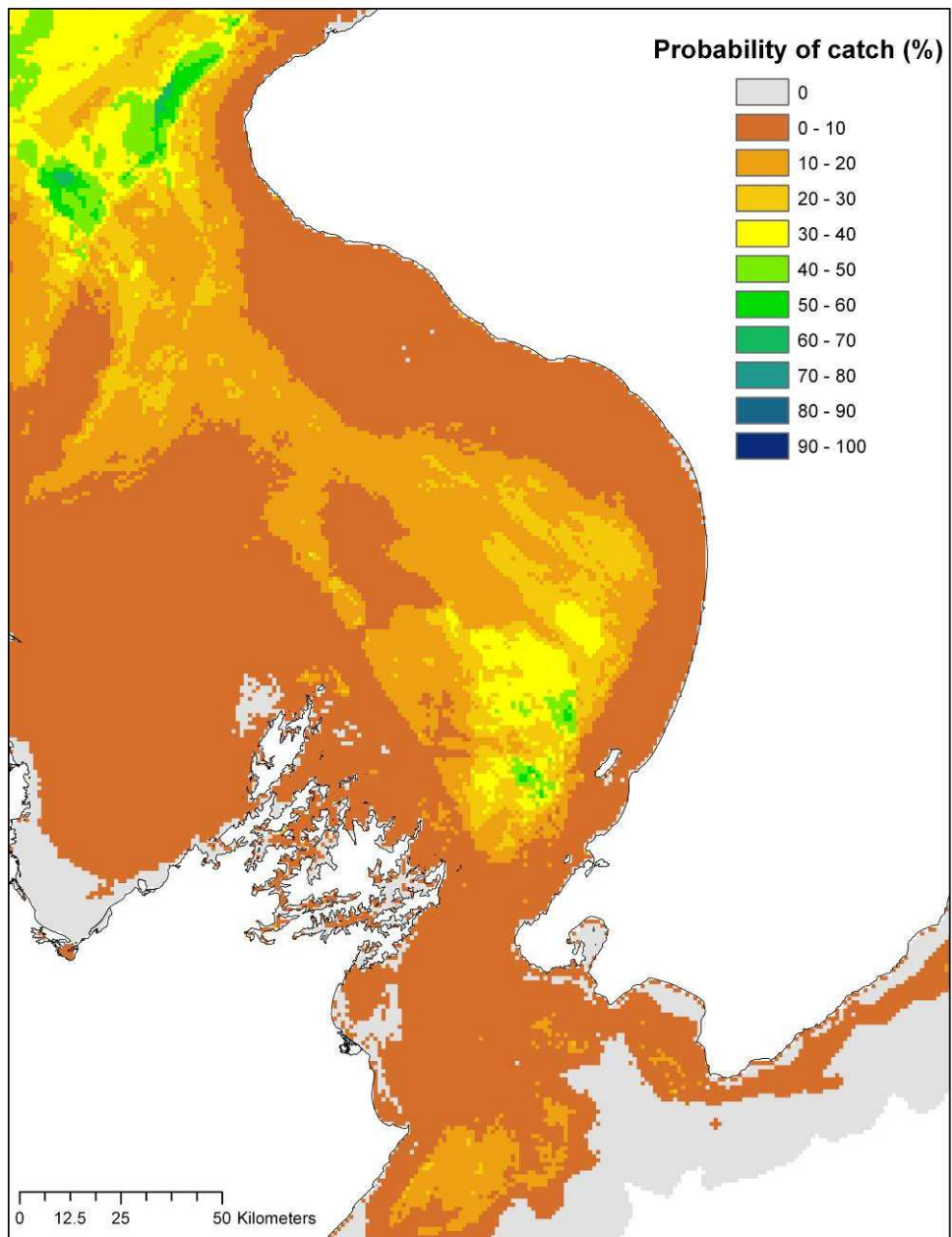


Figure A3.31: Probability of occurrence (%) of redbait (*Emmelichthys nitidus*) in a demersal trawl in the South Taranaki Bight region.

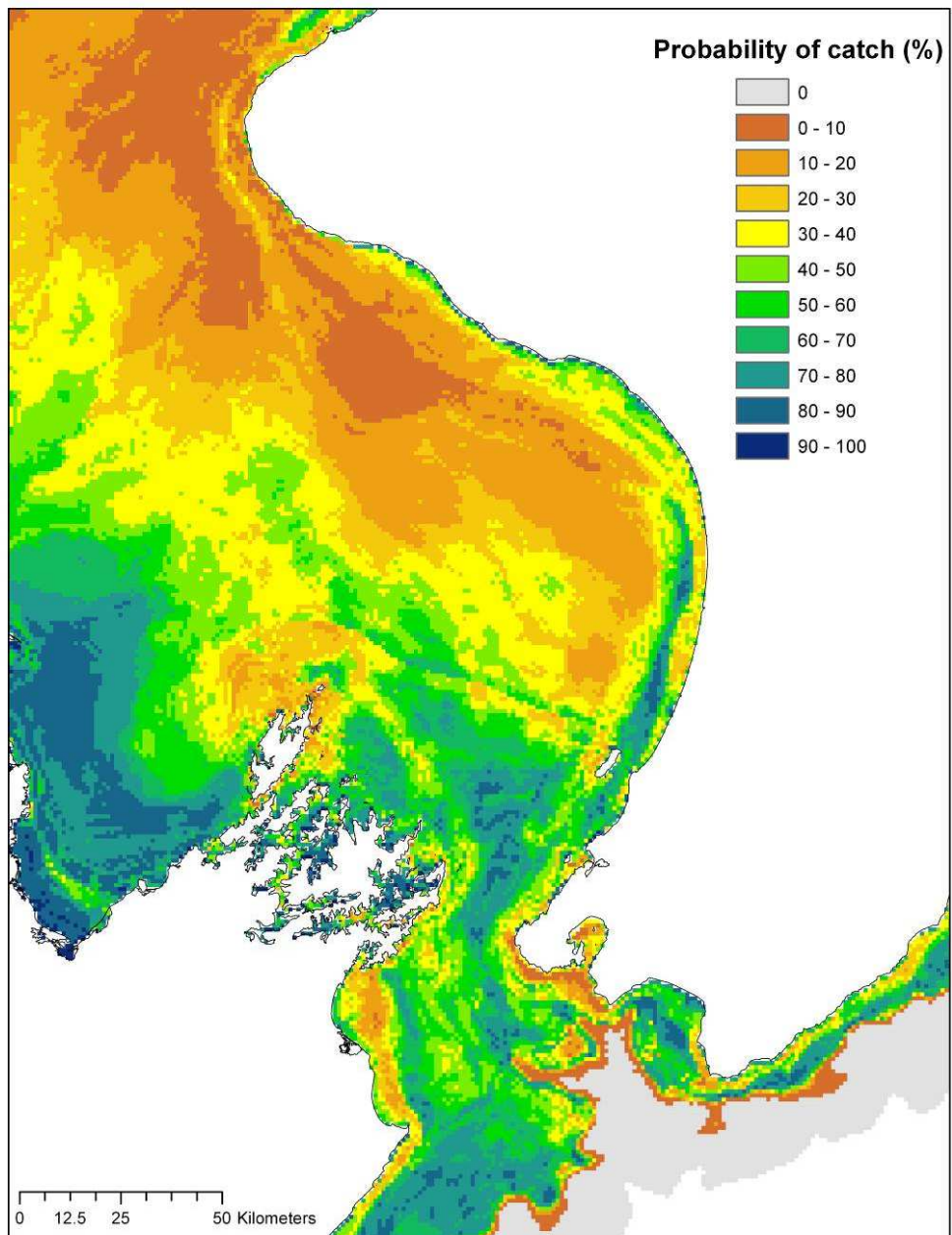


Figure A3.32: Probability of occurrence (%) of red cod (*Pseudophycis bachus*) in a demersal trawl in the South Taranaki Bight region.

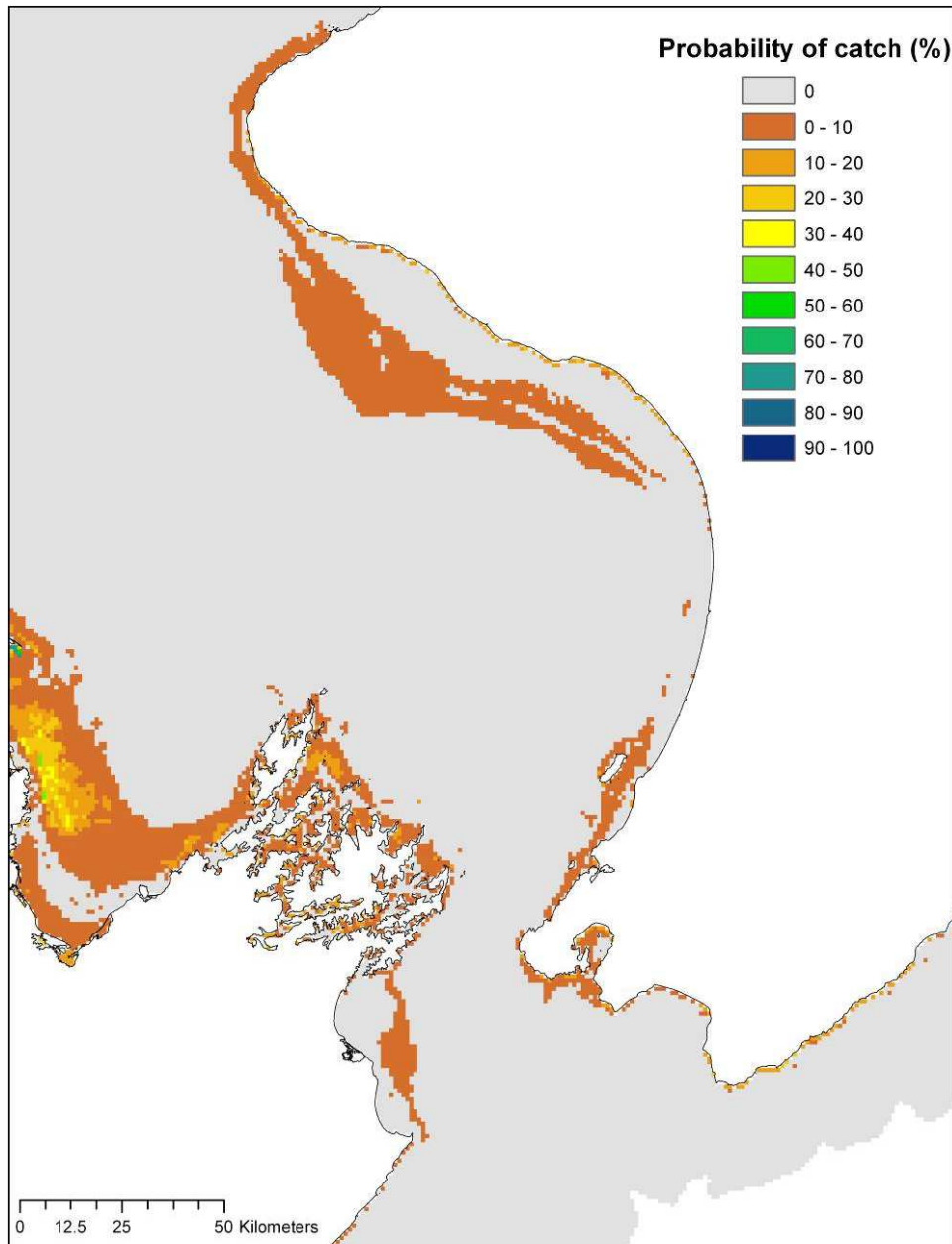


Figure A3.33: Probability of occurrence (%) of red mullet (*Upeneichthys lineatus*) in a demersal trawl in the South Taranaki Bight region.

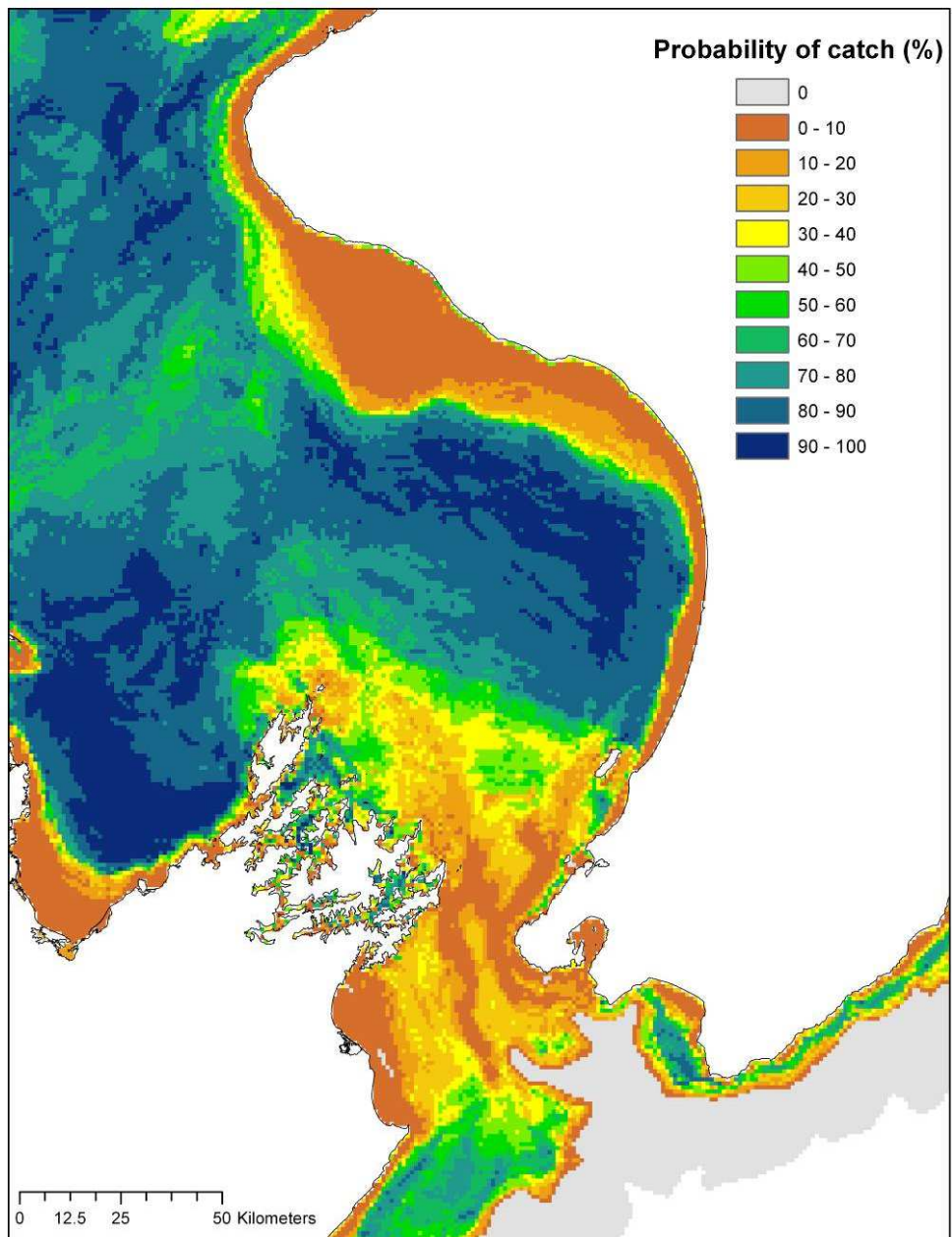


Figure A3.34: Probability of occurrence (%) of scaly gurnard (*Lepidotrigla brachyoptera*) in a demersal trawl in the South Taranaki Bight region.

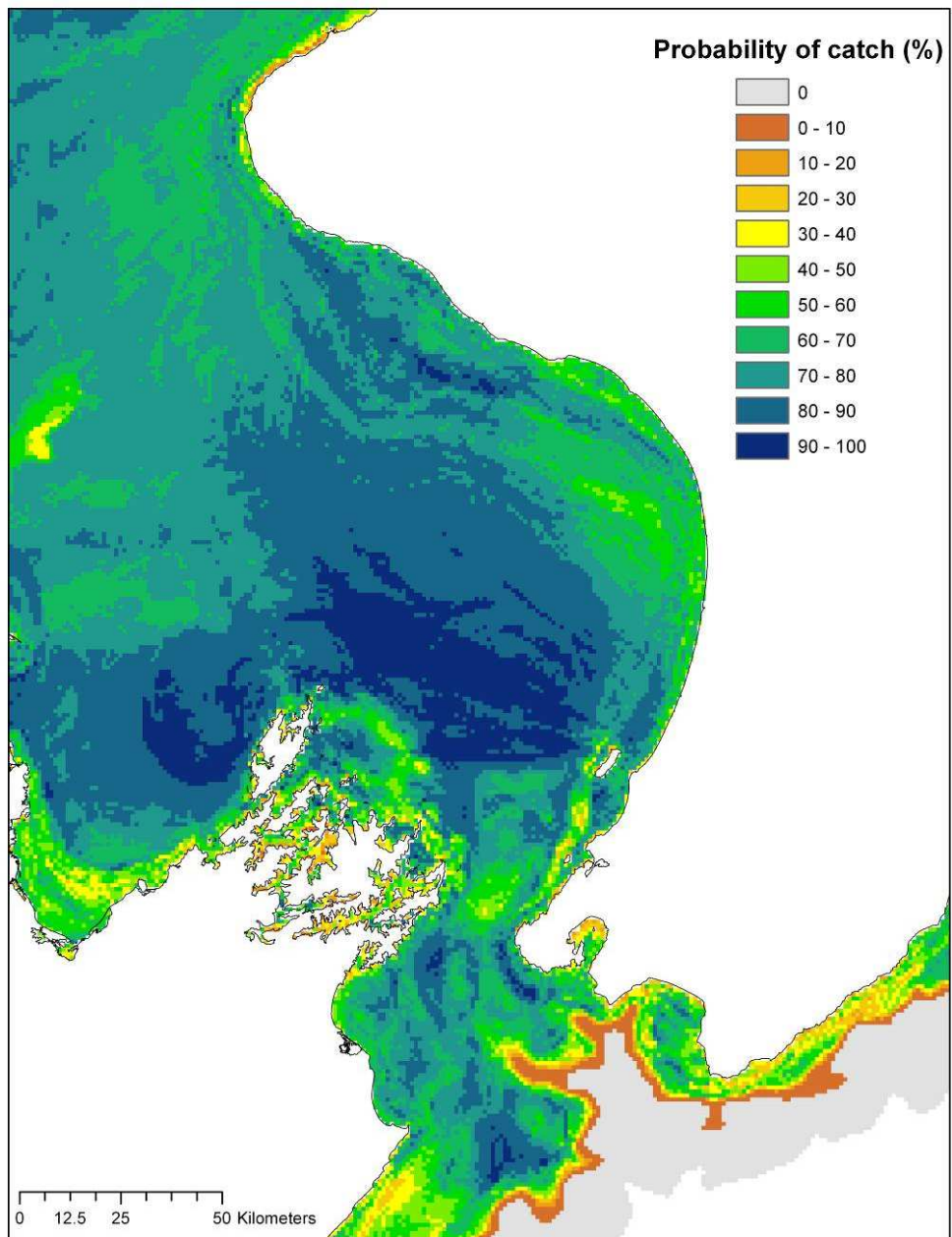


Figure A3.35: Probability of occurrence (%) of school shark (*Galeorhinus galeus*) in a demersal trawl in the South Taranaki Bight region.

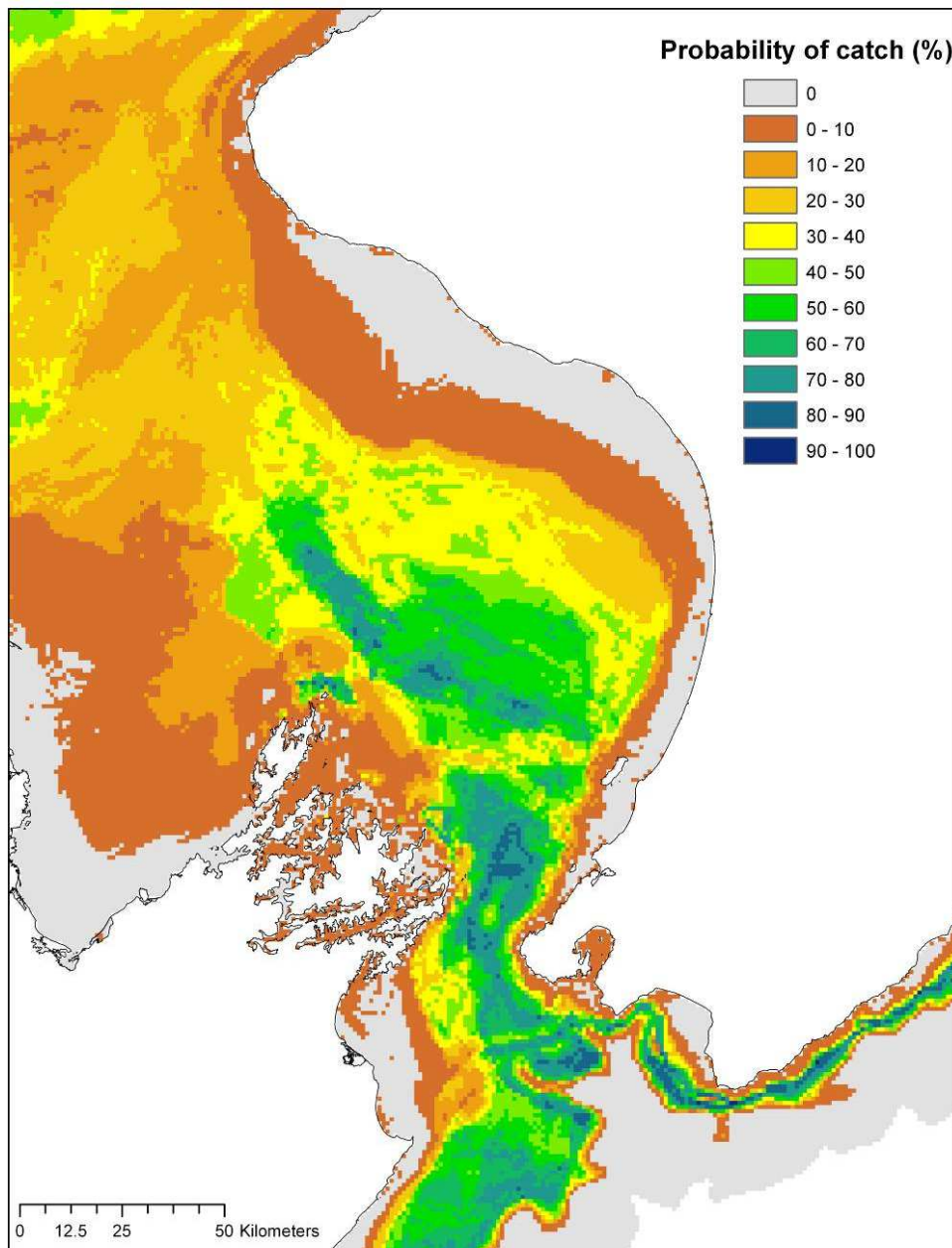


Figure A3.36: Probability of occurrence (%) of silver dory (*Cyttus novaezealandiae*) in a demersal trawl in the South Taranaki Bight region.

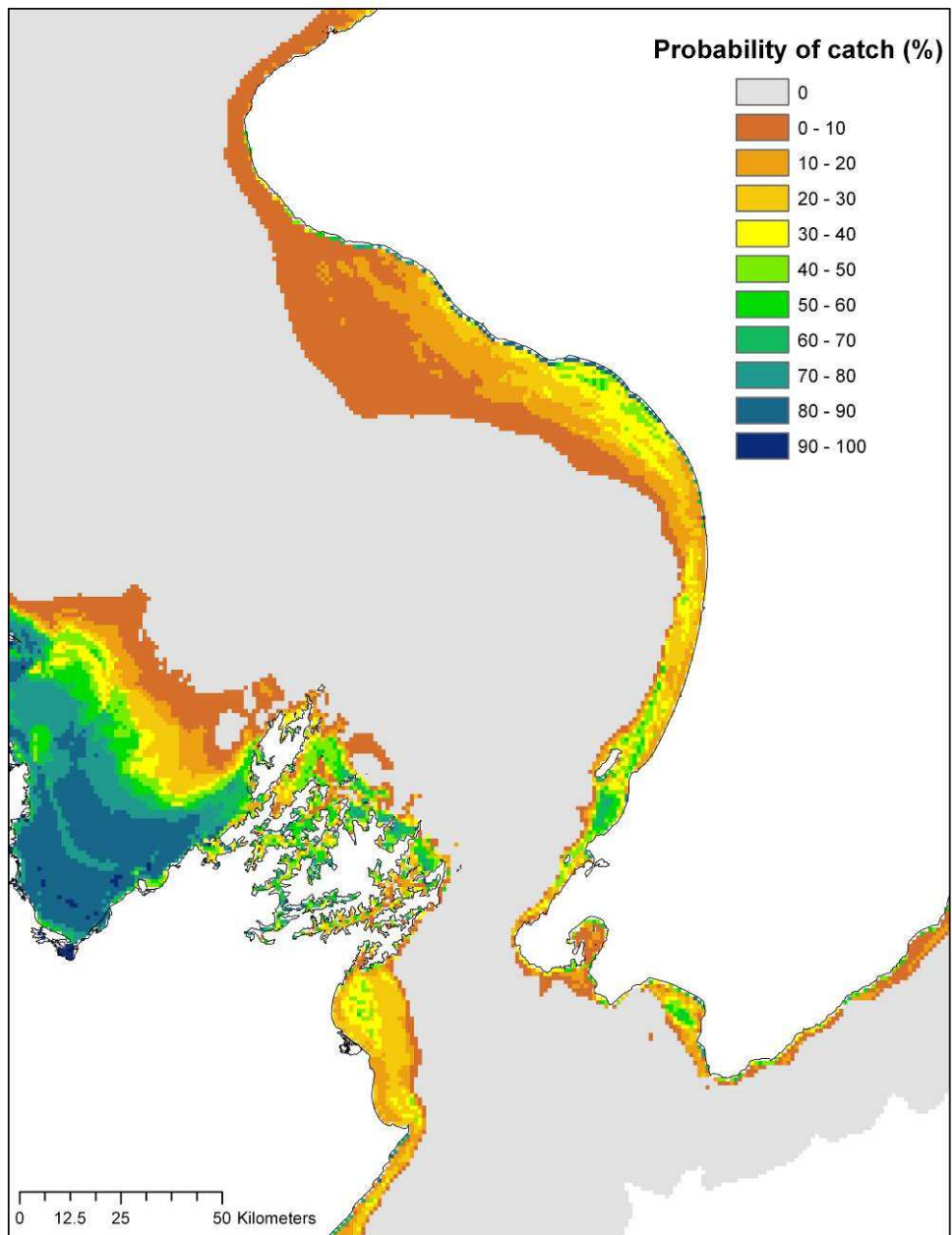


Figure A3.37: Probability of occurrence (%) of sand flounder (*Phombosolea plebeia*) in a demersal trawl in the South Taranaki Bight region.

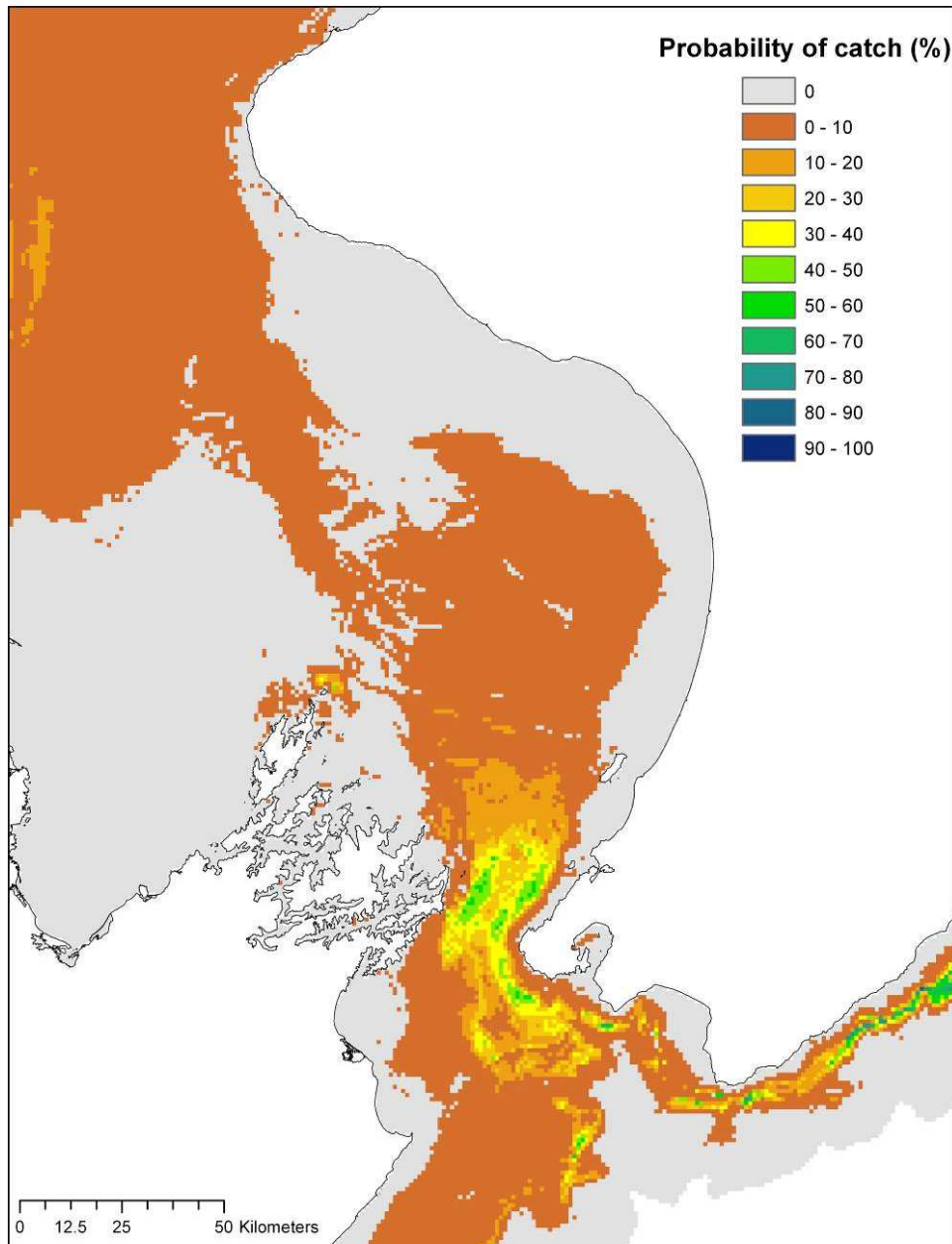


Figure A3.38: Probability of occurrence (%) of gemfish (*Rexea solandri*) in a demersal trawl in the South Taranaki Bight region.

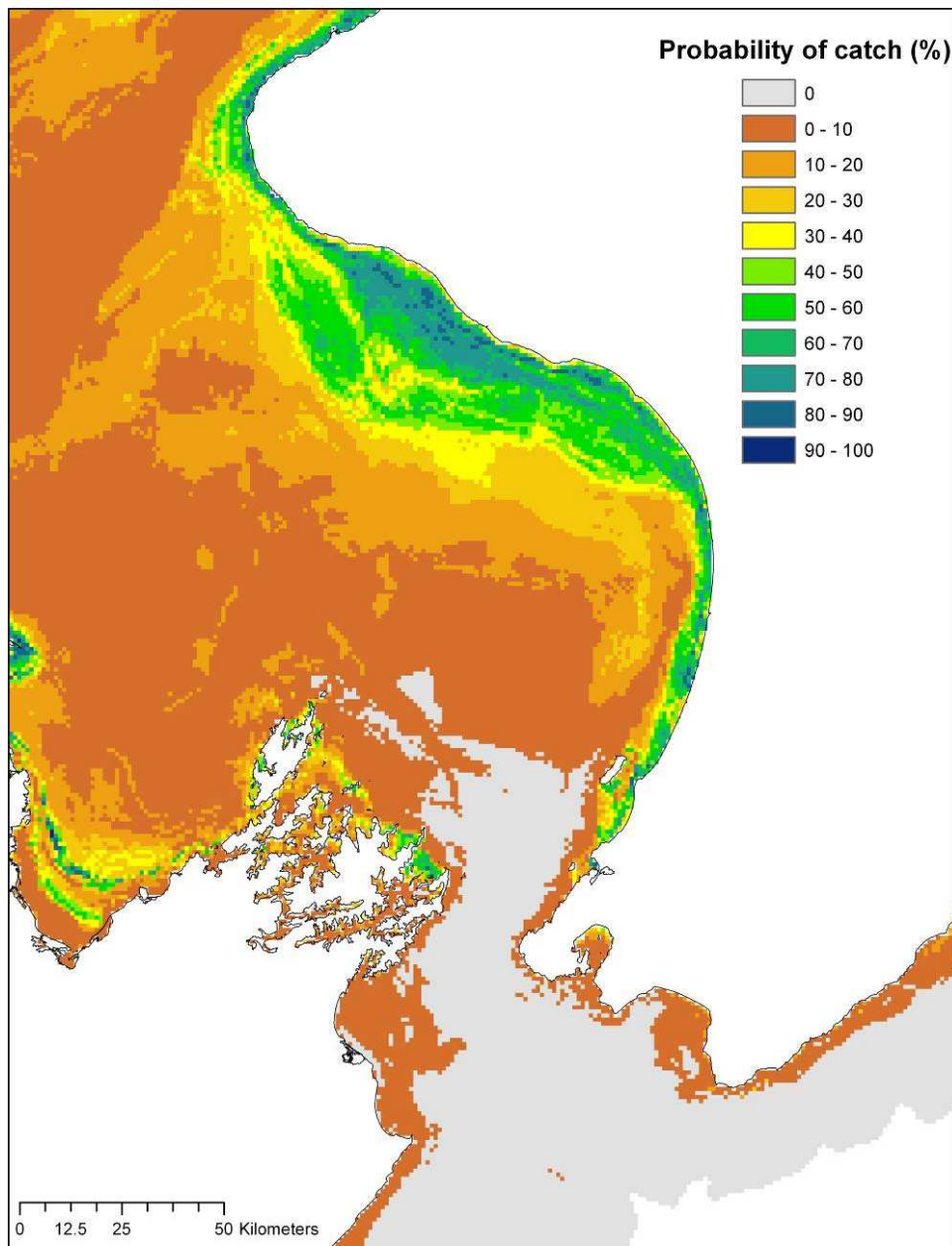


Figure A3.39: Probability of occurrence (%) of snapper (*Pagrus auratus*) in a demersal trawl in the South Taranaki Bight region.

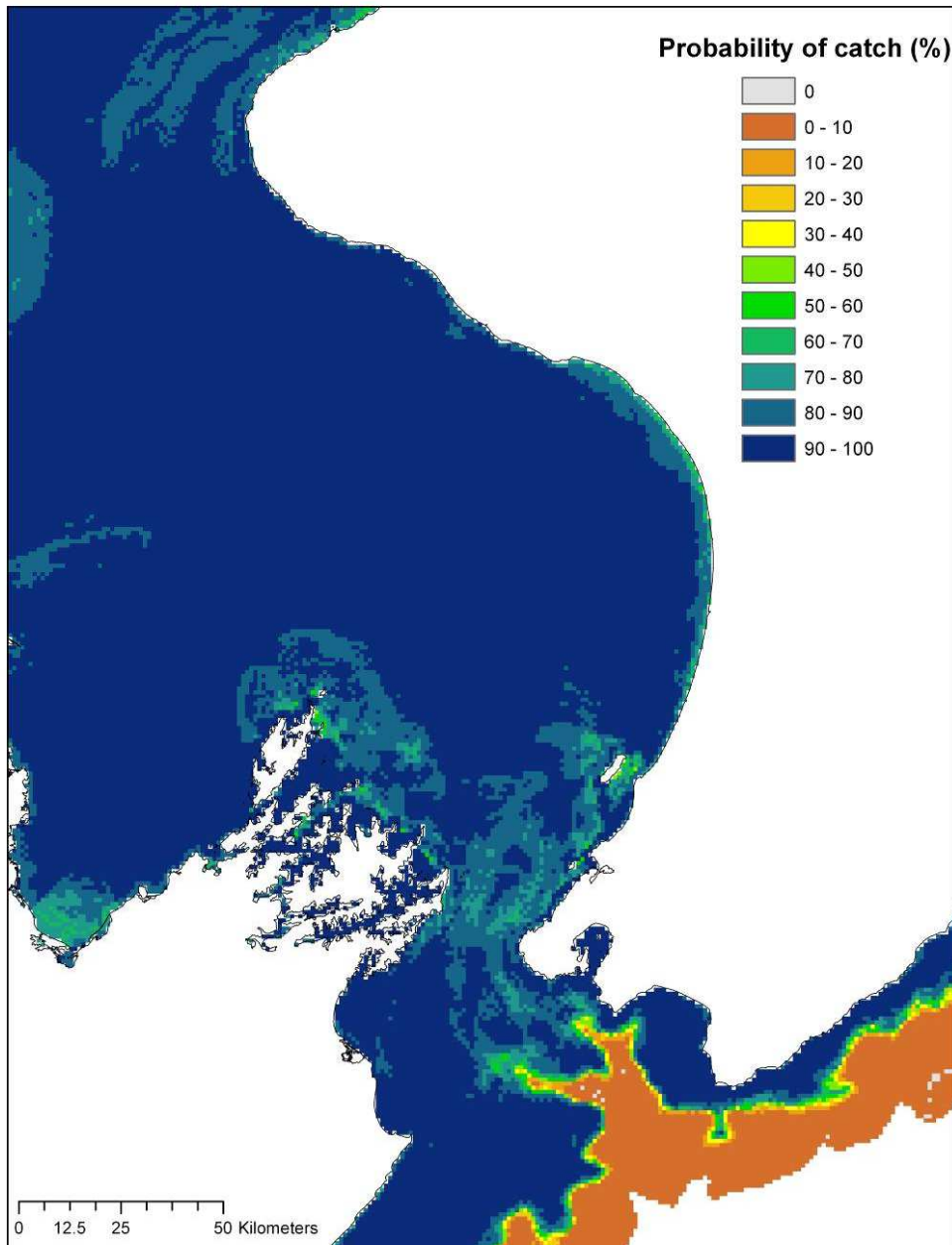


Figure A3.40: Probability of occurrence (%) of spiny dogfish (*Squalus acanthias*) in a demersal trawl in the South Taranaki Bight region.

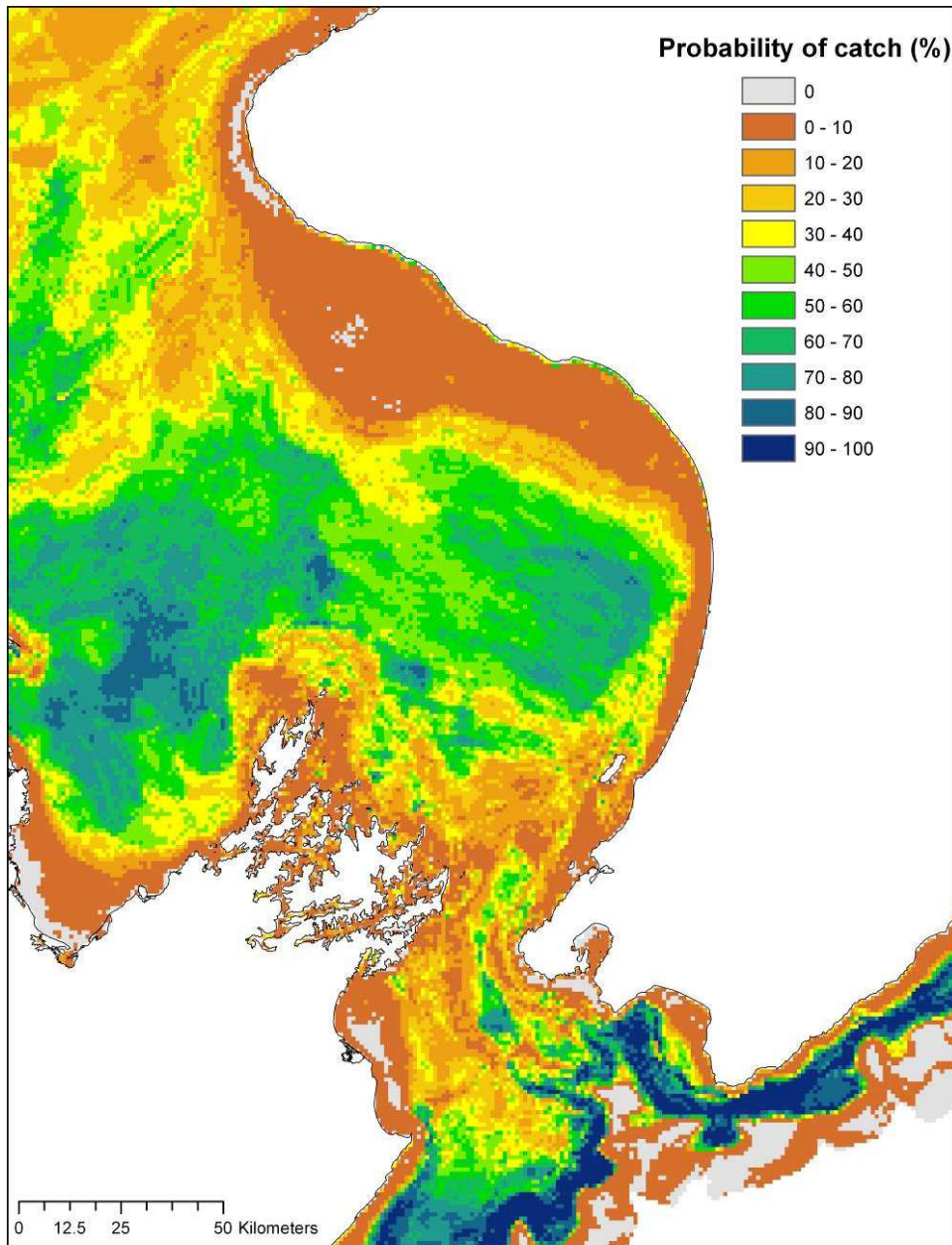


Figure A3.41: Probability of occurrence (%) of sea perch (*Helicolenus spp.*) in a demersal trawl in the South Taranaki Bight region.

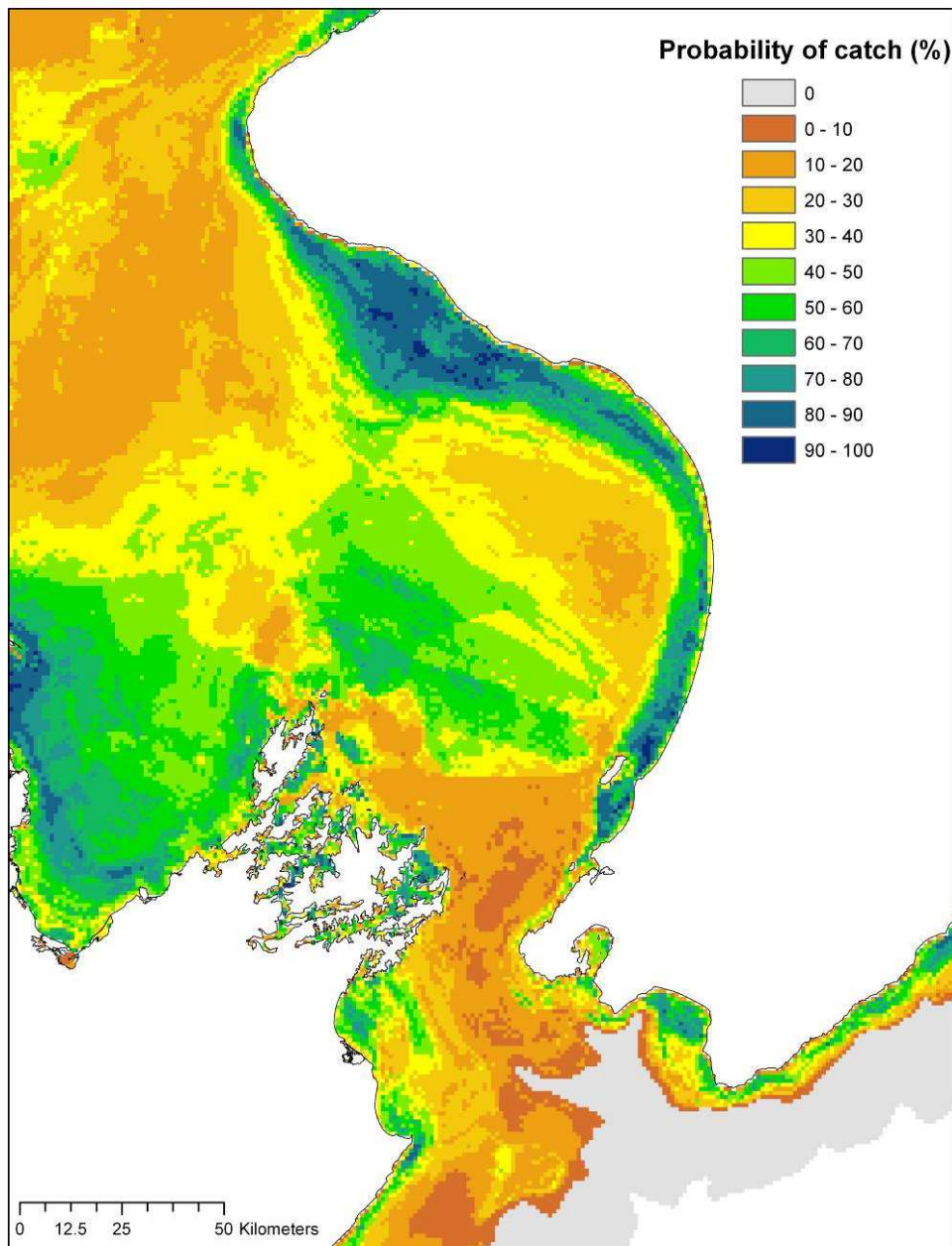


Figure A3.42: Probability of occurrence (%) of rig (*Mustelus lenticulatus*) in a demersal trawl in the South Taranaki Bight region.

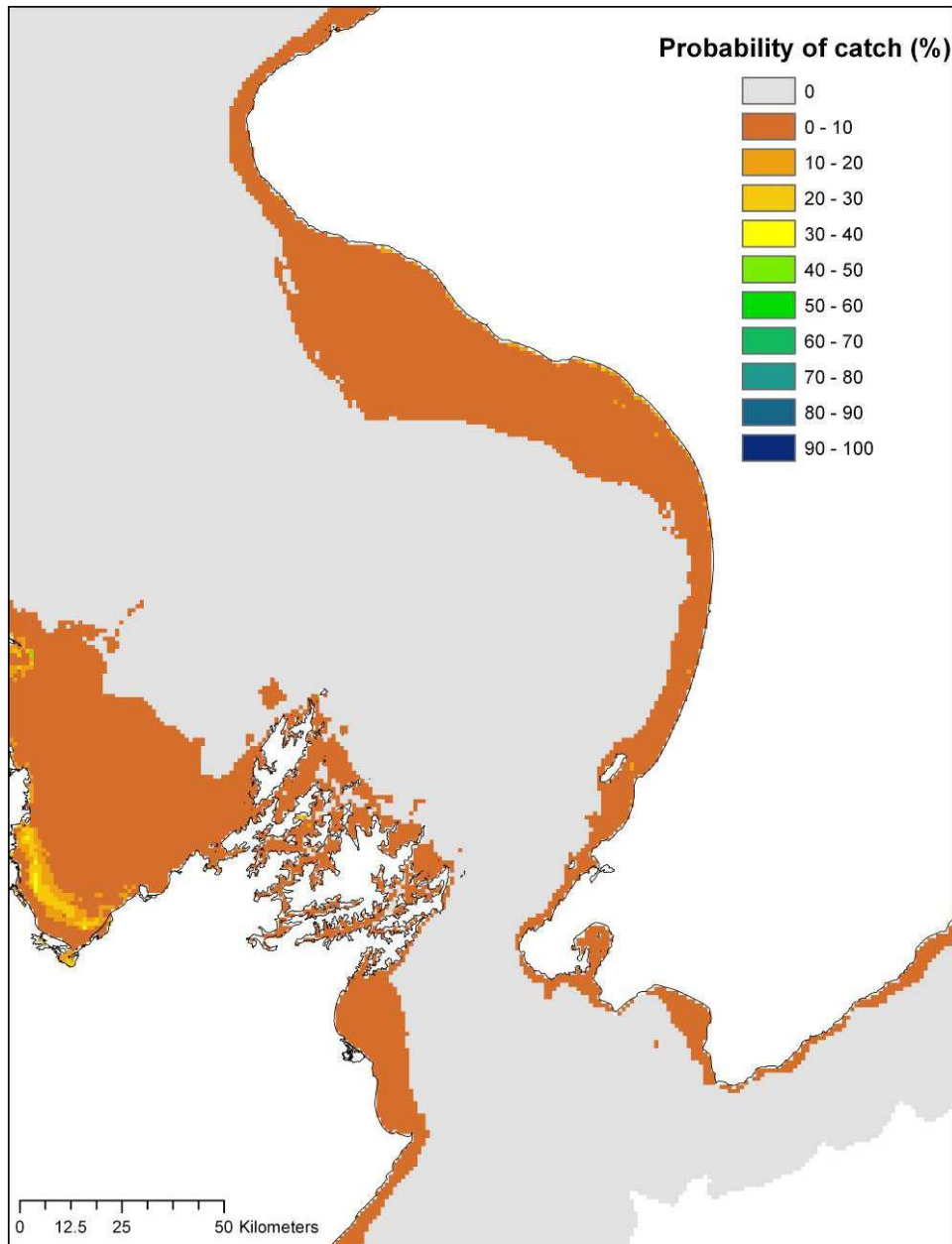


Figure A3.43: Probability of occurrence (%) of spotted stargazer (*Genyagnus monopterygius*) in a demersal trawl in the South Taranaki Bight region.

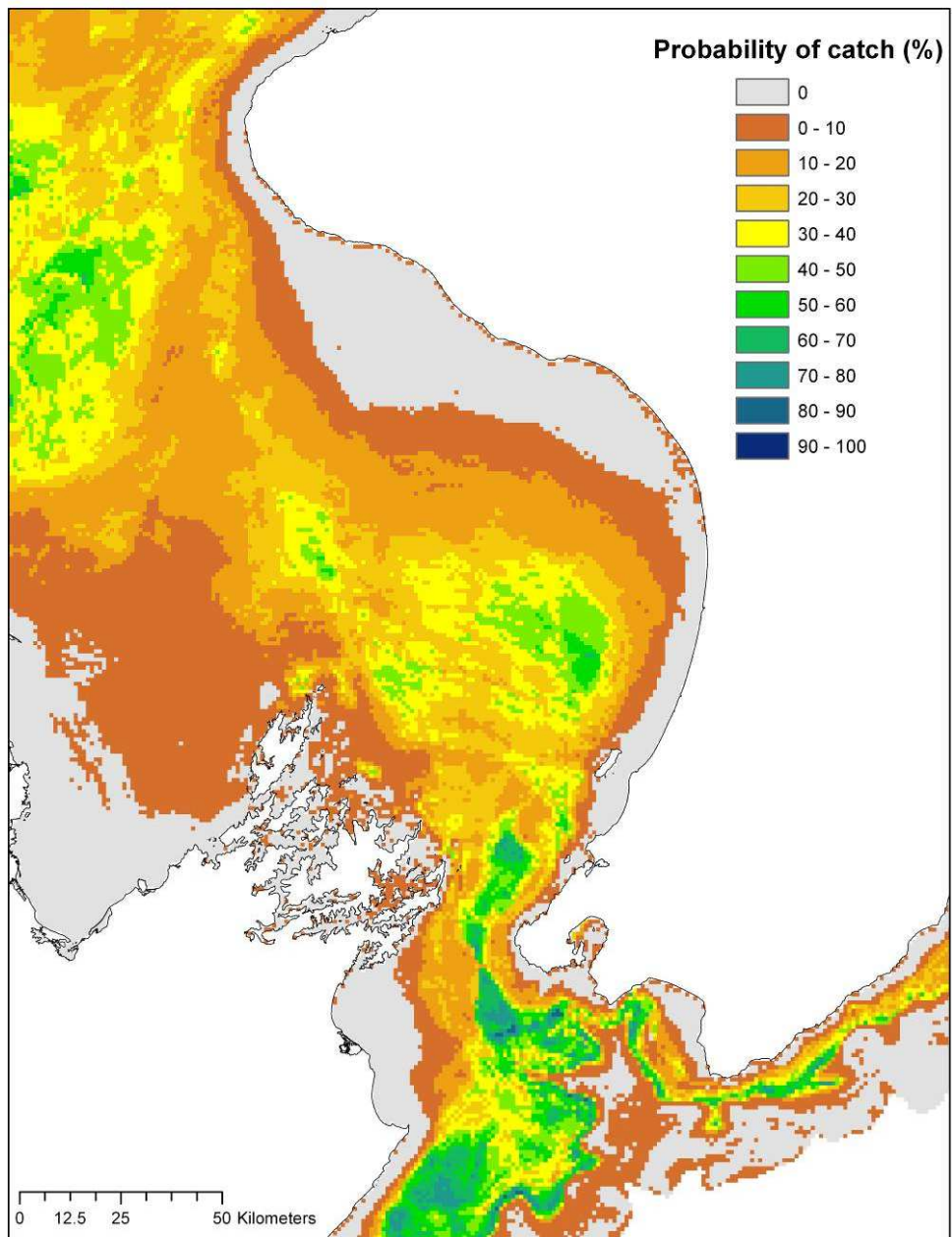


Figure A3.44: Probability of occurrence (%) of silverside (*Argentina elongata*) in a demersal trawl in the South Taranaki Bight region.

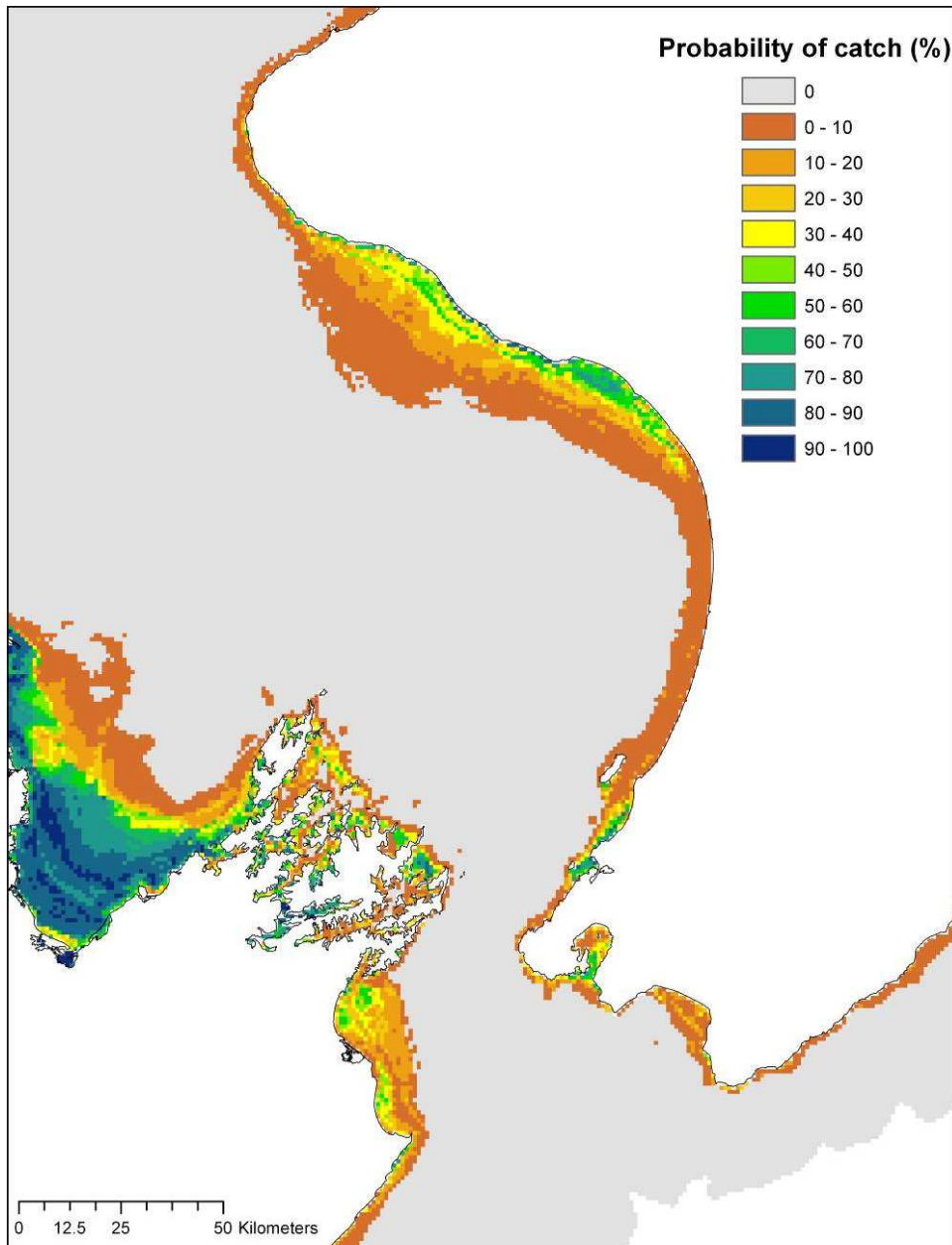


Figure A3.45: Probability of occurrence (%) of spotty (*Notolabrus celidotus*) in a demersal trawl in the South Taranaki Bight region.

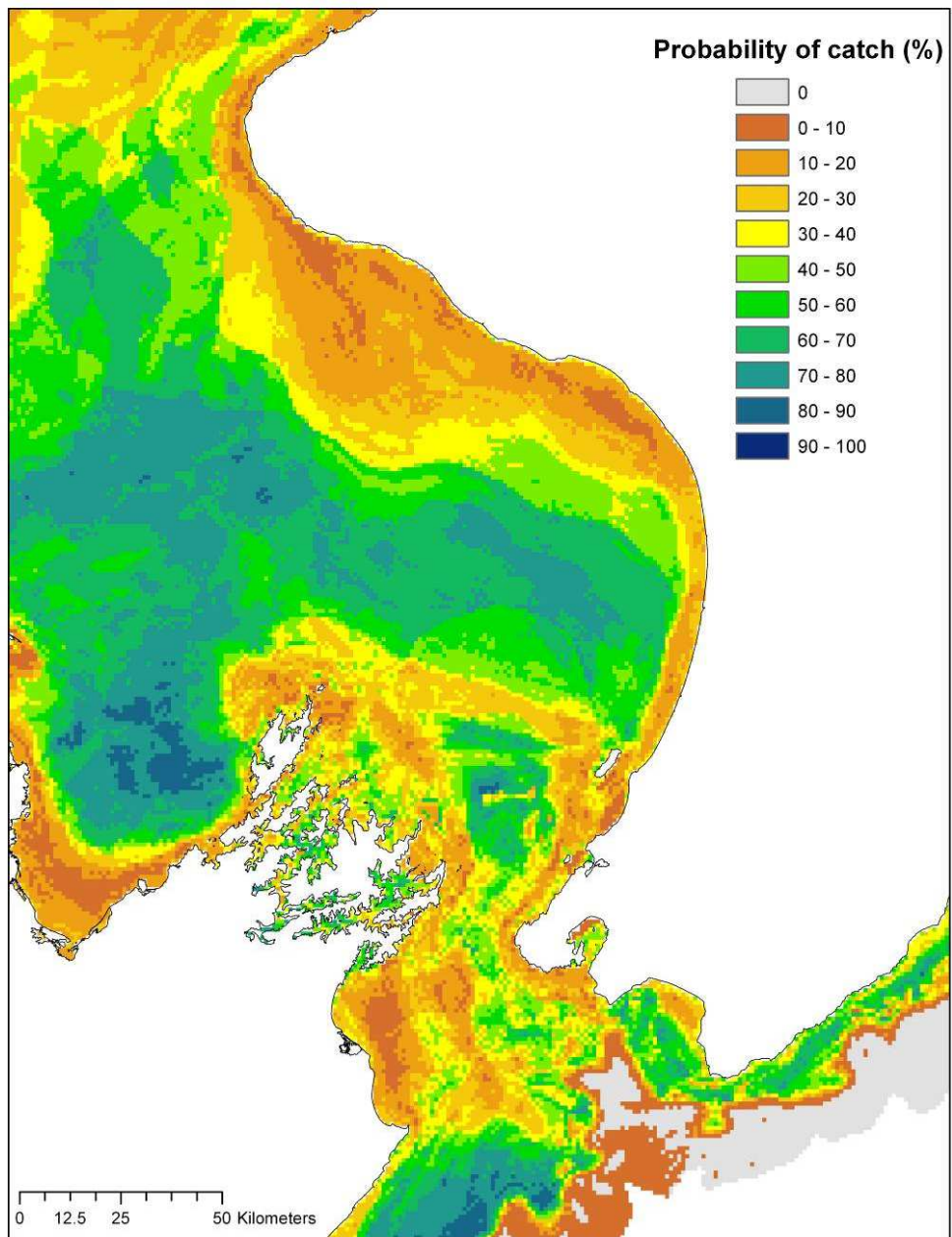


Figure A3.46: Probability of occurrence (%) of silver warehou (*Seriolella punctata*) in a demersal trawl in the South Taranaki Bight region.

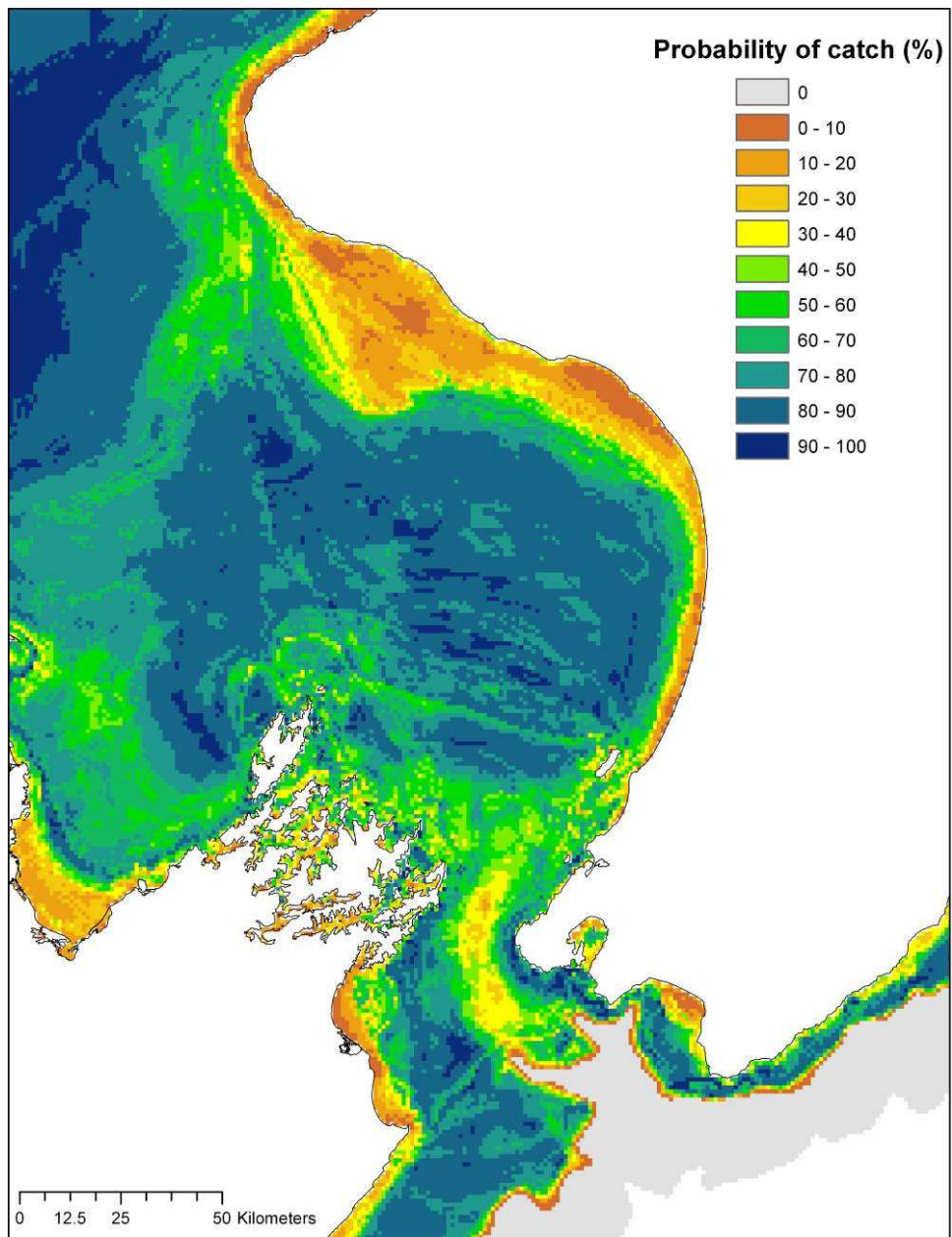


Figure A3.47: Probability of occurrence (%) of tarakihi (*Nemadactylus macropterus*) in a demersal trawl in the South Taranaki Bight region.

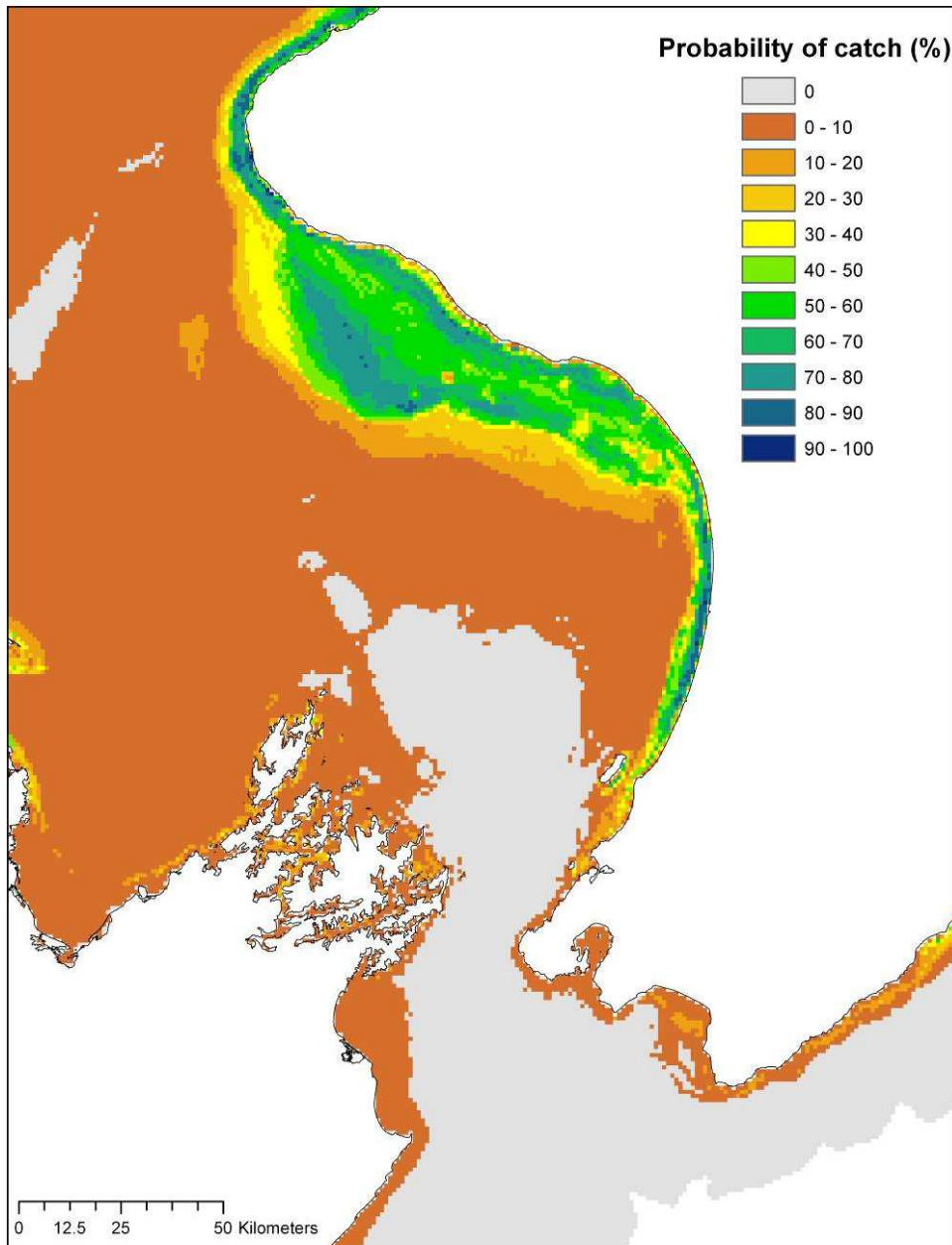


Figure A3.48: Probability of occurrence (%) of trevally (*Pseudocaranx dentex*) in a demersal trawl in the South Taranaki Bight region.

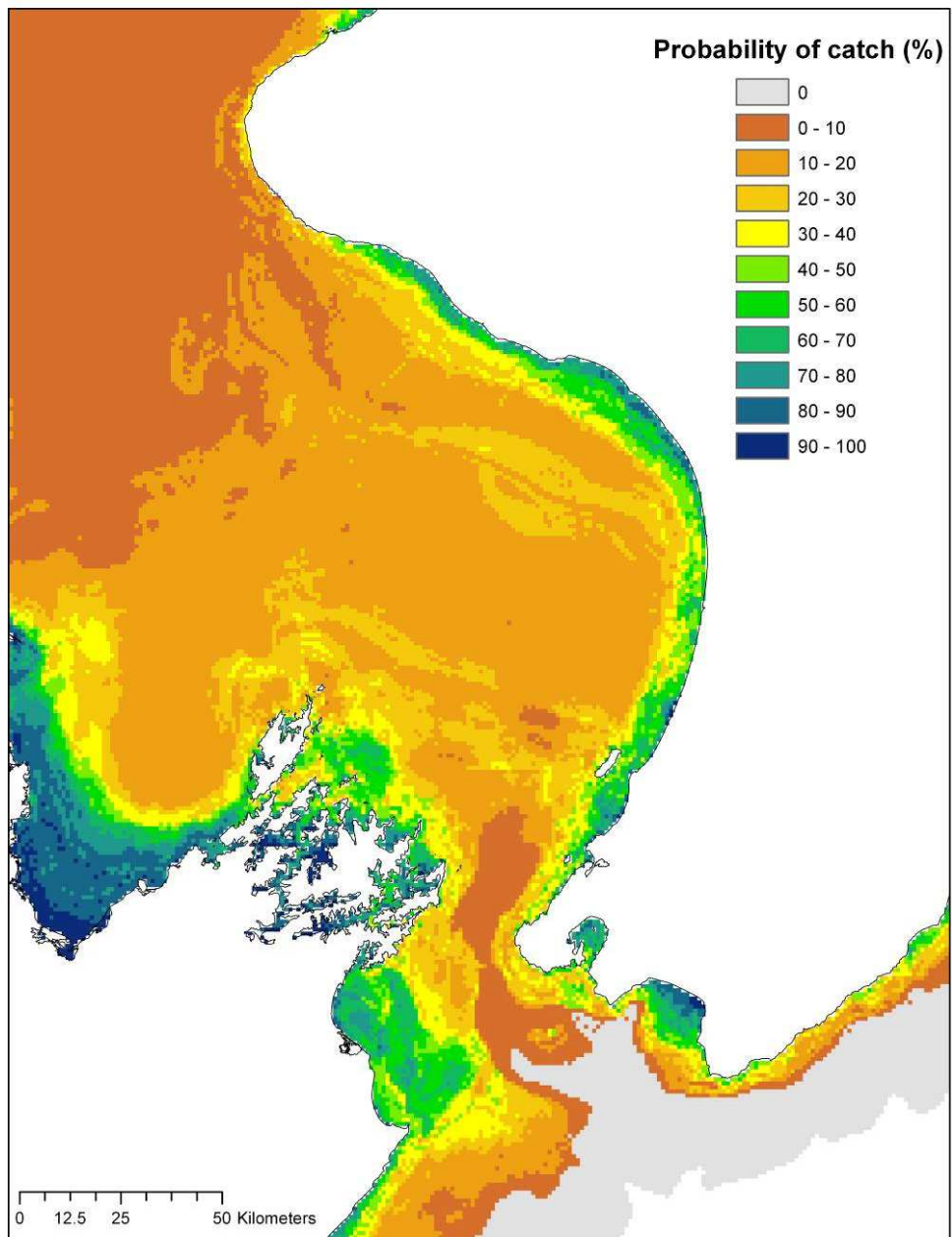


Figure A3.49: Probability of occurrence (%) of common warehou (*Seriotelella brama*) in a demersal trawl in the South Taranaki Bight region.

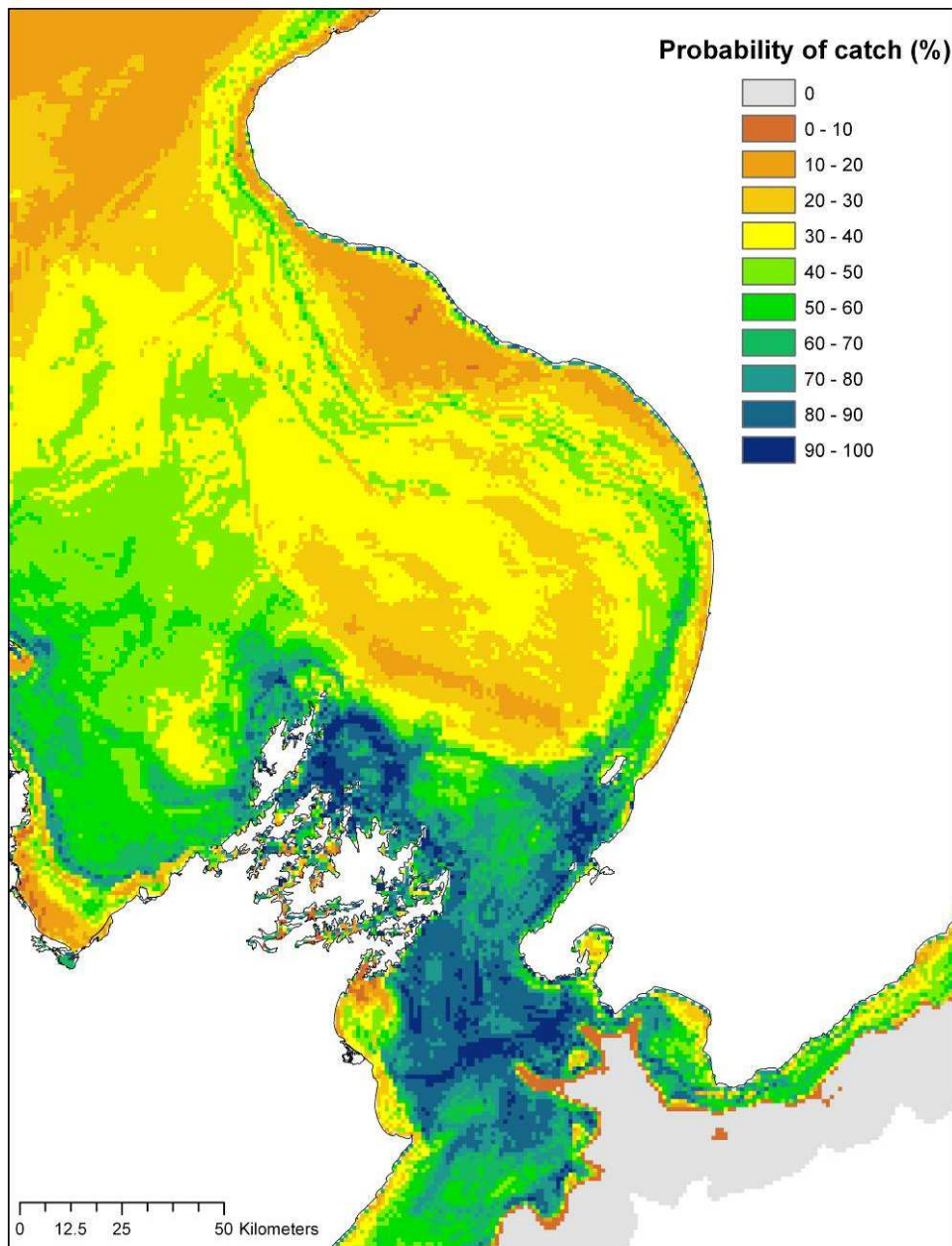


Figure A3.50: Probability of occurrence (%) of witch (*Arnoglossus scapha*) in a demersal trawl in the South Taranaki Bight region.

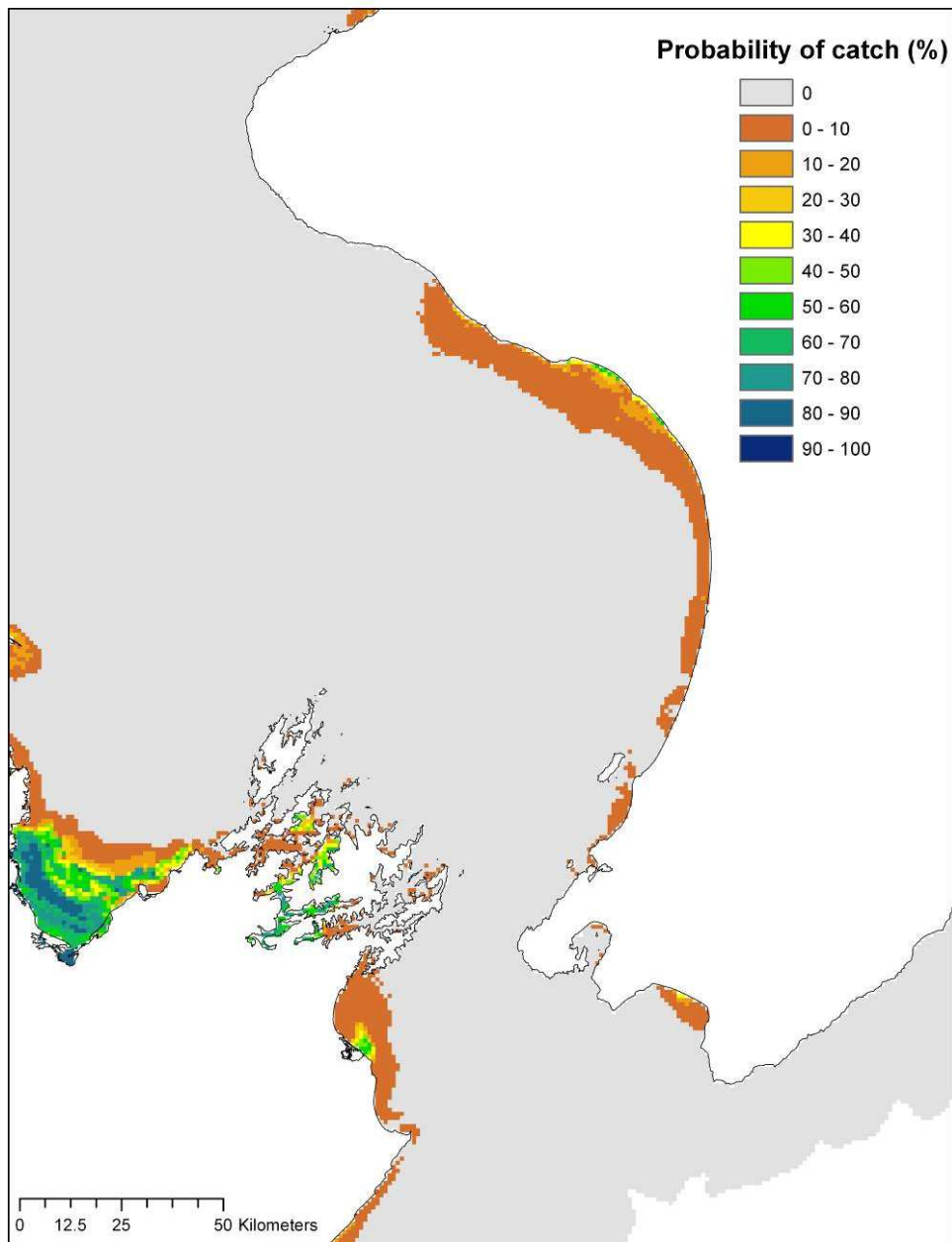


Figure A3.51: Probability of occurrence (%) of yellow-belly flounder (*Rhombosolea leporina*) in a demersal trawl in the South Taranaki Bight region.