

SOUTHLAND WIND FARM

Fast-track Approvals Substantive Application

Part G - Project Figures - Management Plans

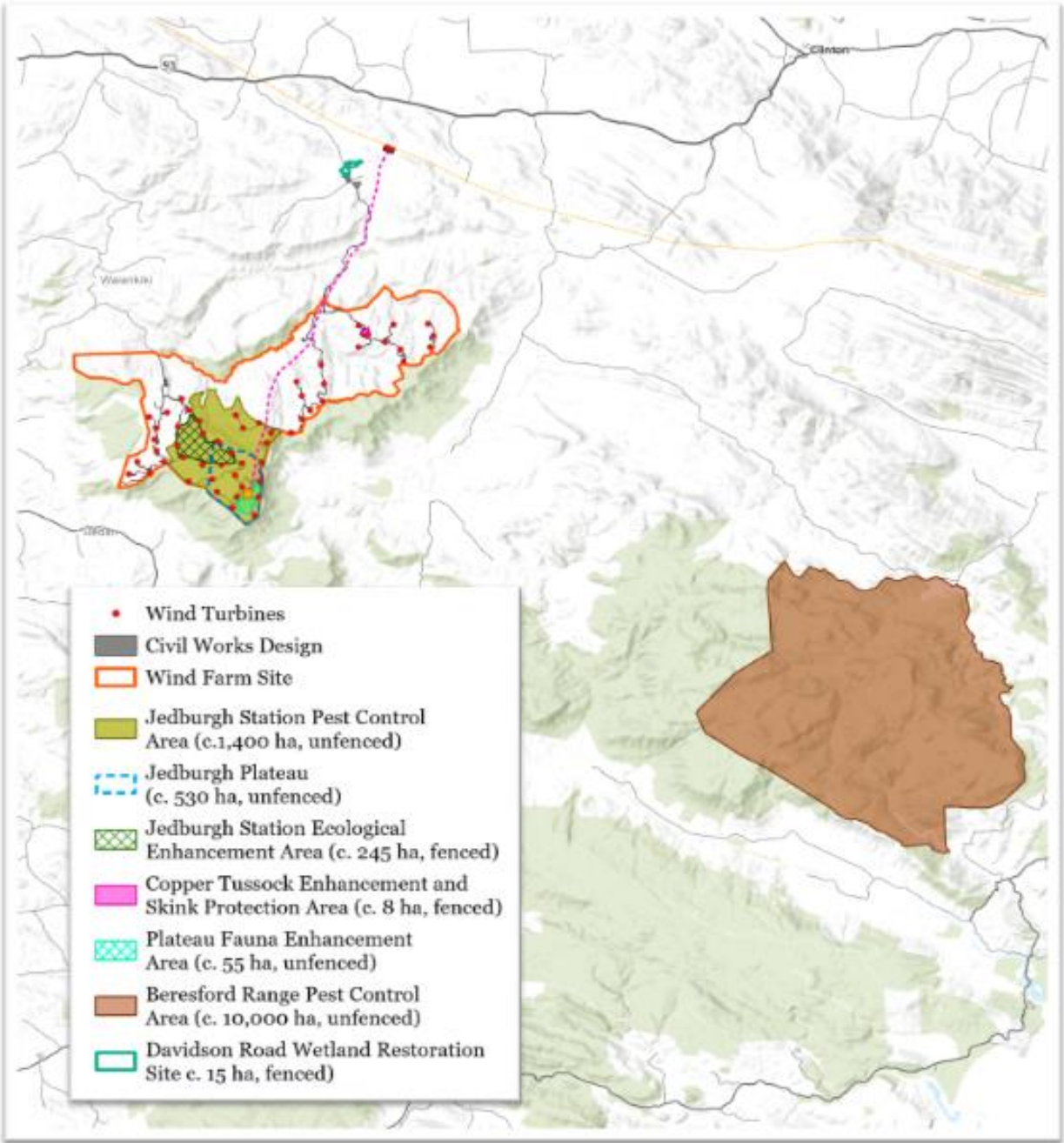


FIGURE		
Figure Name	Figure Description	Page No
FIGURE - CONSTRUCTION EMP - 2	Water take locations and corresponding stream catchments	1
FIGURE LOCAL RESIDENTS - 1	Defined local residents area for the purposes of the project	2
FIGURE - AMP - 01a	Avifauna survey locations - Wind Farm Site - West	3
FIGURE - AMP - 01b	Avifauna survey locations - Wind Farm Site - East	4
FIGURE - AMP - 02	Location of proposed Bird Flight Diverters Along the Transmission Line Route	5
FIGURE - BAT MP - 01	Areas requiring tree identification and assessment for bat roosts prior to tree being removed or limbed	6
FIGURE - HREP - 01	Overview of the Ecological Enhancement and Restoration Areas on the Wind Farm Project Site	7
FIGURE - HREP - 02	Ecological Enhancement and Restoration Areas on Jedburgh Station	8
FIGURE - HREP - 03	Copper Tussock Enhancement and Skink Protection Area on Matariki Forest	9
FIGURE - HREP - 04	Davidson Road Wetland Restoration Site and Proposed Covenant	10
FIGURE - HREP - 05	Indicative Habitat Enhancement Planting Areas on Jedburgh Station	11
FIGURE - LMP - 01a	Lizard Survey Locations and Tussock Skink Recordings - Wind Farm Site - West	12
FIGURE - LMP - 01b	Lizard Survey Locations and Tussock Skink Recordings - Wind Farm Site - East	13
FIGURE - LMP - 01c	Tautuku Gecko Survey Locations and Observations - Wind Farm Site - Jedburgh	14
FIGURE - LMP - 02a	Tussock Skink Management Actions - Wind Farm Site - West	15
FIGURE - LMP - 02b	Tussock Skink Management Actions - Wind Farm Site - East	16
FIGURE - LMP - 03	Skink and Tautuku Gecko Release Sites	17
FIGURE - SBMP - 01a	Survey Areas and Results for Helms Stag Beetle - Wind Farm - West	18
FIGURE - SBMP - 01b	Survey Areas and Results for Helms Stag Beetle - Wind Farm - East	19
FIGURE - SBMP - 02a	Salvage and Release Areas for Helms Stag Beetle - Wind Farm - West	20
FIGURE - SBMP - 02b	Salvage and Release Areas for Helms Stag Beetle - Wind Farm - East	21
FIGURE - TIMP - 01a	Notable Terrestrial Invertebrate Survey Areas and Species Found - Wind Farm Site - West	22
FIGURE - TIMP - 01b	Notable Terrestrial Invertebrate Survey Areas and Species Found - Wind Farm Site - East	23
FIGURE - TIMP - 02a	Terrestrial Invertebrate Salvage and Release Areas - Wind Farm Site - West	24
FIGURE - TIMP - 02b	Terrestrial Invertebrate Salvage and Release Areas - Wind Farm Site - East	25
FIGURE - VMP - 01a	Mapped wetlands and Vegetation Ecological Values - Wind Farm Site - West	26
FIGURE - VMP - 01b	Mapped wetlands and Vegetation Ecological Values - Wind Farm Site - East	27
FIGURE - VMP - 02a	Lizard and Invertebrate Constraints - Wind Farm Site - West	28
FIGURE - VMP - 02b	Lizard and Invertebrate Constraints - Wind Farm Site - East	29