

# Downtown Carpark Site Development

# B

Proposed Landscape Drawings

Prepared for:  
Precinct Properties Holdings Ltd

Document Revision Status:  
Fast-Track Approval Application, Revision A

3 October 2025



# Document Suite


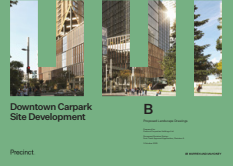


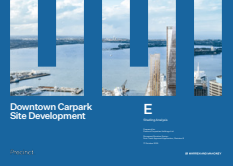
Prepared For:  
**Precinct Properties Holdings Ltd**

Document Revision Status:  
**Fast-Track Approval Application, Revision A**

Date:  
**3 October 2025**

Contact:  
Warren and Mahoney Architects New Zealand Ltd  
139 Pakenham St West  
Auckland 1010  
New Zealand  
+64 9 309 4894

Application Documents:

	<b>A</b> Proposed Architectural Drawings	<input type="radio"/>
	<b>B</b> Proposed Landscape Drawings	<input checked="" type="radio"/>
	<b>C</b> Existing & Demolition Drawings	<input type="radio"/>
	<b>D</b> Architecture & Landscape Report	<input type="radio"/>
	<b>E</b> Shading Analysis	<input type="radio"/>





LANDSCAPE SHEET LIST (RC-SERIES)

	SHEET NAME	Current Revision	Drawn By
L01.003	LANDSCAPE CONCEPT GROUND LEVEL PLAN EXISTING CONTEXT	I	WAM
L01.004	LANDSCAPE CONCEPT COMBINED LEVELS PLAN EXISTING CONTEXT	I	WAM
L01.005	LEVELS STRATEGY	I	WAM
L01.101	LANDSCAPE CONCEPT TE URUNGA HAU	G	WAM
L01.102	LANDSCAPE CONCEPT AON PODIUM	G	WAM
L20.101	LANDSCAPE SECTIONS TE URUNGA HAU	F	WAM
L20.102	LANDSCAPE SECTIONS TE URUNGA HAU	F	WAM
L20.103	LANDSCAPE SECTIONS TE URUNGA HAU	F	WAM
L20.104	LANDSCAPE SECTIONS TE URUNGA HAU	F	WAM
L01.103	LANDSCAPE CONCEPT ROOF TERRACES	G	WAM



All dimension to be verified on site before producing shop drawings or commencing any work.  
Do not scale. The copyright of this drawing remains with Warren and Mahoney Architects New Zealand Ltd.

Revisions

FAST-TRACK APPLICATION

Notes

Consultants

**WARREN AND MAHONEY**  
Architect

RCP  
Project Manager  
RLB  
Quantity Surveyor  
HOLMES  
Structural Engineer  
NDY  
Services Engineer  
JENSEN HUGHES  
Fire Engineer  
TONKIN + TAYLOR  
Civil Engineer  
FLOW  
Traffic Engineer  
MOTT MACDONALD  
Facade Engineer

Client

PRECINCT PROPERTIES

**Warren and Mahoney Architects**  
New Zealand Ltd

Ground Floor, Mason Bros.  
139 Pakenham Street West Wynyard  
Quarter  
Auckland 1010  
New Zealand  
Phone + 64 9 309 4894

Registered Architects and Designers  
www.warrenandmahoney.com

Project Title

**DOWNTOWN**  
**CARPARK**  
**DEVELOPMENT**





All dimension to be verified on site before producing shop drawings or commencing any work.  
Do not scale. The copyright of this drawing remains with Warren and Mahoney Architects New Zealand Ltd.

**Revisions**

H	26/09/2025	FAST-TRACK APPLICATION ISSUE
I	03/10/2025	FAST-TRACK APPLICATION ISSUE

**Notes**

- Commercial Lobby
- Residential Lobby
- Hotel Lobby
- Retail / F&B
- End Of Trip
- 2000L + Tree Off Site

1:600 at A3

1m 5m 10m

N

**Consultants**

**WARREN AND MAHONEY Architect**

RCP  
Project Manager  
RLB  
Quantity Surveyor  
HOLMES  
Structural Engineer  
NDY  
Services Engineer  
JENSEN HUGHES  
Fire Engineer  
TONKIN + TAYLOR  
Civil Engineer  
FLOW  
Traffic Engineer  
MOTT MACDONALD  
Facade Engineer

**Client**

PRECINCT PROPERTIES

**Warren and Mahoney Architects  
New Zealand Ltd**

Ground Floor, Mason Bros.  
139 Pakenham Street West Wynyard  
Quarter  
Auckland 1010  
New Zealand  
Phone + 64 9 309 4894

Registered Architects and Designers  
www.warrenandmahoney.com

**Project Title**

**DOWNTOWN  
CARPARK  
DEVELOPMENT**

**Drawing Title**

**LANDSCAPE CONCEPT  
GROUND LEVEL PLAN  
EXISTING CONTEXT**

**Drawing Status**

**FAST-TRACK  
APPLICATION**

**Drawing Details**

Scale	1:600 @ A3
Date	03/10/2025
Job No	9234
Drawn	BT
Checked	MH

**Drawing No**

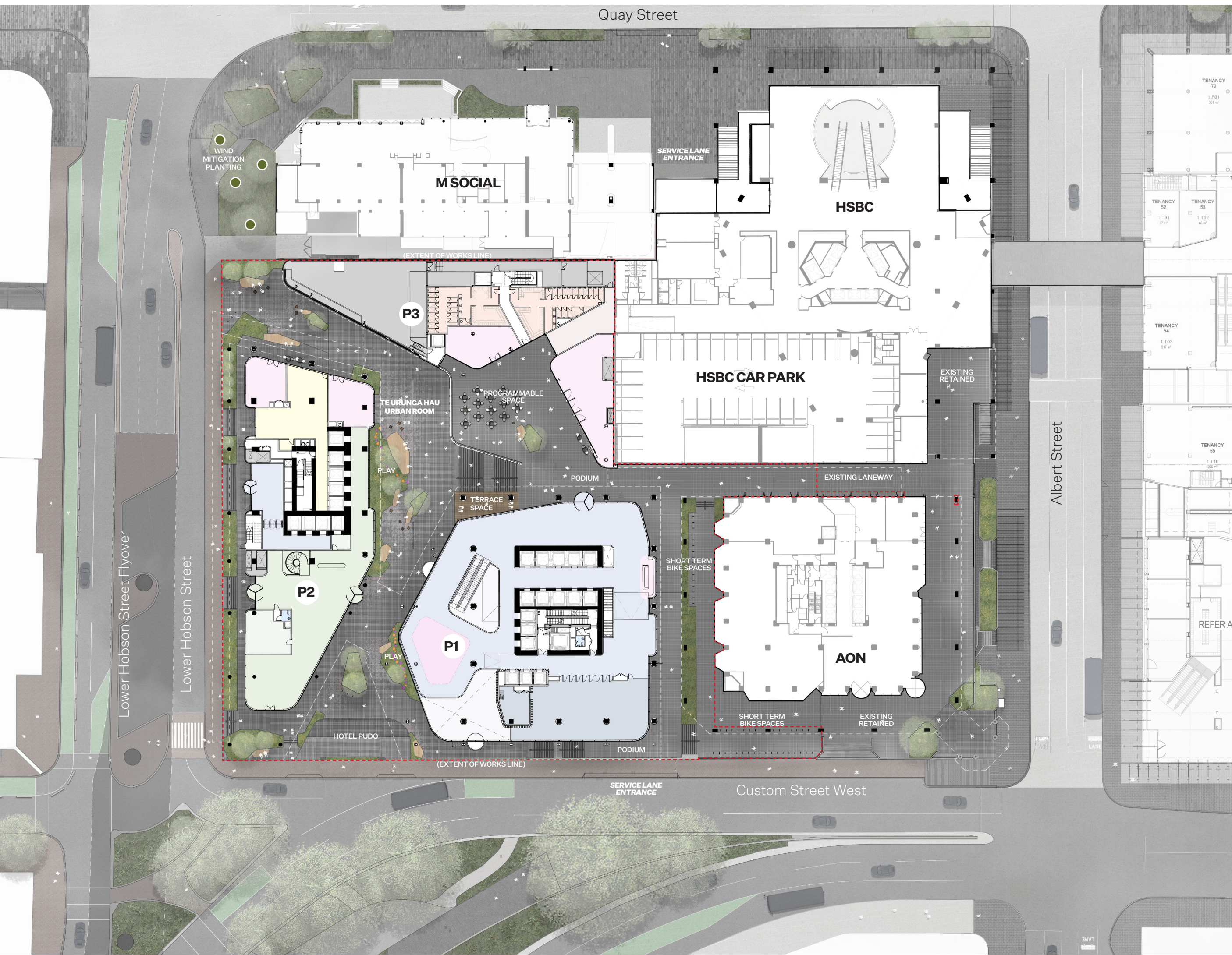
L01.003

**Revision**

I

**WARREN AND MAHONEY**





All dimension to be verified on site before producing shop drawings or commencing any work.  
Do not scale. The copyright of this drawing remains with Warren and Mahoney Architects New Zealand Ltd.

**Revisions**

H	26/09/2025	FAST-TRACK APPLICATION ISSUE
I	03/10/2025	FAST-TRACK APPLICATION ISSUE

**Notes**

- Commercial Lobby
- Residential Lobby
- Hotel Lobby
- Retail / F&B
- End Of Trip
- 2000L + Tree Off Site

1:600 at A3

1m 5m 10m

N

**Consultants**

**WARREN AND MAHONEY Architect**

RCP  
Project Manager  
RLB  
Quantity Surveyor  
HOLMES  
Structural Engineer  
NDY  
Services Engineer  
JENSEN HUGHES  
Fire Engineer  
TONKIN + TAYLOR  
Civil Engineer  
FLOW  
Traffic Engineer  
MOTT MACDONALD  
Facade Engineer

**Client**

PRECINCT PROPERTIES

**Warren and Mahoney Architects  
New Zealand Ltd**

Ground Floor, Mason Bros.  
139 Pakenham Street West Wynyard  
Quater  
Auckland 1010  
New Zealand  
Phone + 64 9 309 4894

Registered Architects and Designers  
www.warrenandmahoney.com

**Project Title**

**DOWNTOWN  
CARPARK  
DEVELOPMENT**

**Drawing Title**

**LANDSCAPE CONCEPT  
COMBINED LEVELS PLAN  
EXISTING CONTEXT**

**Drawing Status**

**FAST-TRACK  
APPLICATION**

**Drawing Details**

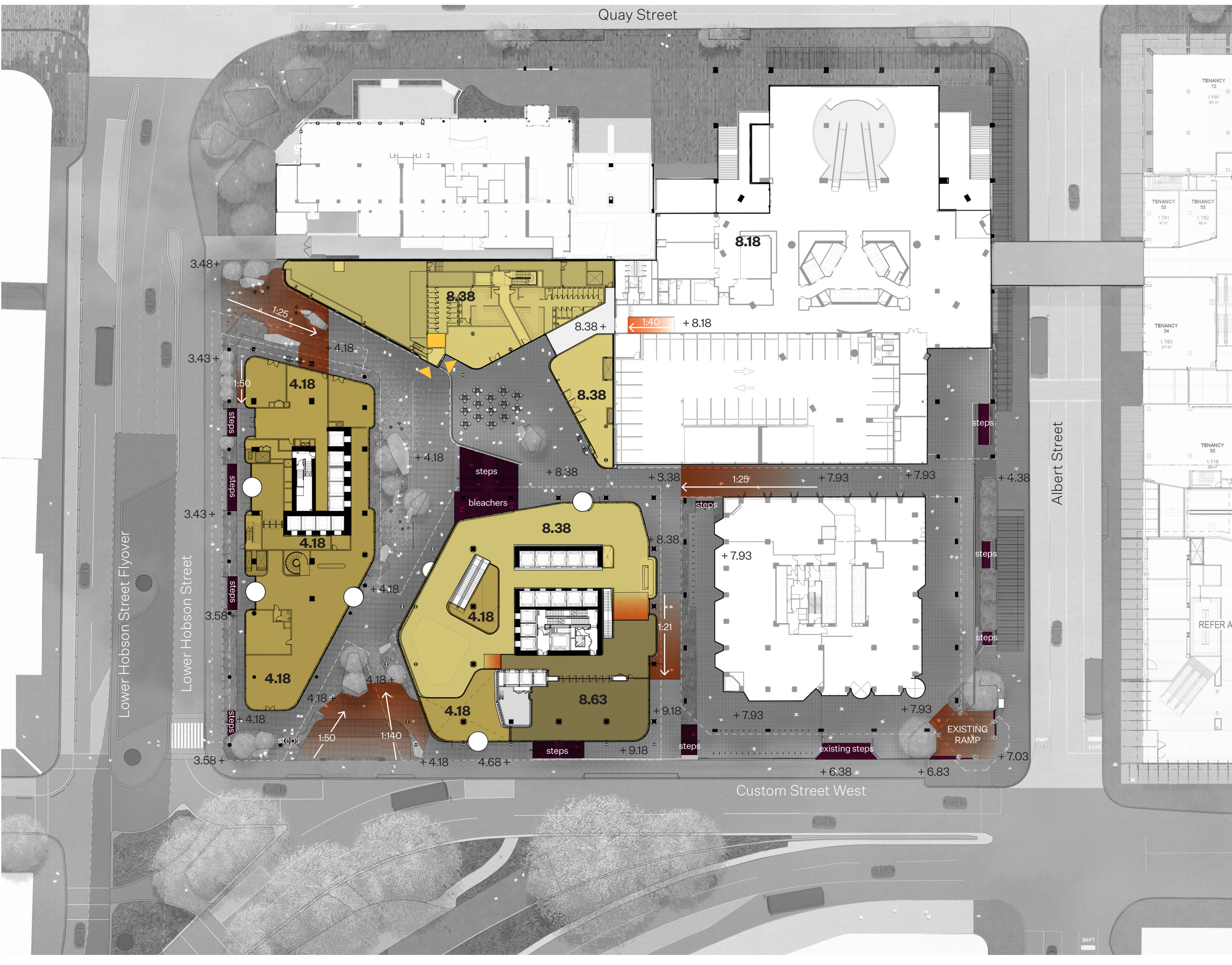
Scale	1:600 @ A3
Date	03/10/2025
Job No	9234
Drawn	BT
Checked	MH

**Drawing No**  
L01.004

**Revision**  
1

**WARREN AND MAHONEY**





All dimension to be verified on site before producing shop drawings or commencing any work.  
Do not scale. The copyright of this drawing remains with Warren and Mahoney Architects New Zealand Ltd.

**Revisions**

H	26/09/2025	FAST-TRACK APPLICATION ISSUE
I	03/10/2025	FAST-TRACK APPLICATION ISSUE

**Notes**

Steps / Escalator

Ramp / Slope

Ground Level 3.58

Ground Level 4.18

Podium Level 8.38

Podium Level 9.18

Accessible Lift

1:600 at A3

1m 5m 10m

N

**Consultants**

**WARREN AND MAHONEY Architect**

RCP  
Project Manager  
RLB  
Quantity Surveyor  
HOLMES  
Structural Engineer  
NDY  
Services Engineer  
JENSEN HUGHES  
Fire Engineer  
TONKIN + TAYLOR  
Civil Engineer  
FLOW  
Traffic Engineer  
MOTT MACDONALD  
Facade Engineer

**Client**

PRECINCT PROPERTIES

**Warren and Mahoney Architects  
New Zealand Ltd**

Ground Floor, Mason Bros.  
139 Pakenham Street West Wynyard Quarter  
Auckland 1010  
New Zealand  
Phone + 64 9 309 4894

Registered Architects and Designers  
www.warrenandmahoney.com

**Project Title**

**DOWNTOWN  
CARPARK  
DEVELOPMENT**

**Drawing Title**

**LEVELS STRATEGY**

**Drawing Status**

**FAST-TRACK  
APPLICATION**

**Drawing Details**

Scale	1:600 @ A3
Date	03/10/2025
Job No	9234
Drawn	BT
Checked	MH

**Drawing No**

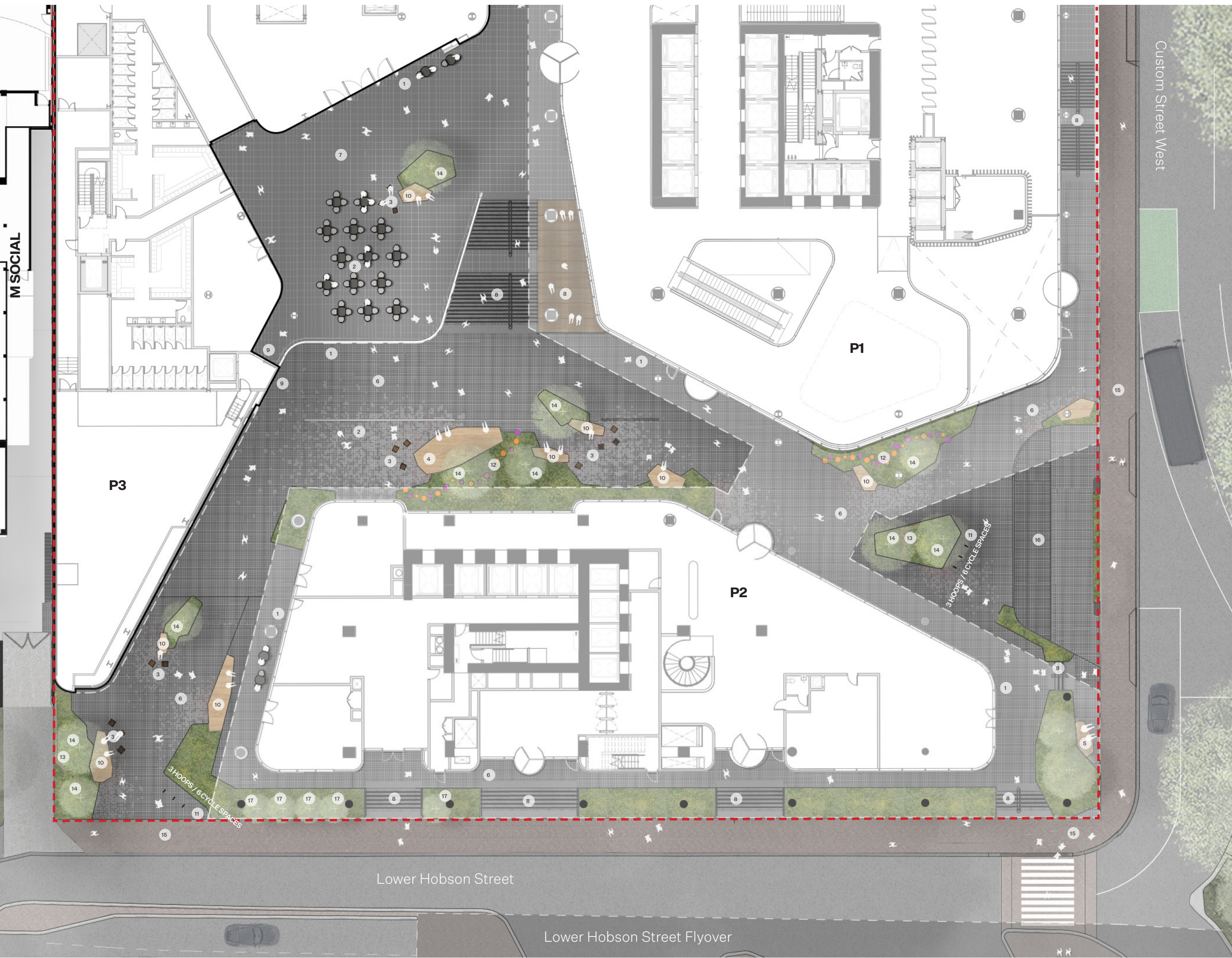
L01.005

**Revision**

I

**WARREN AND MAHONEY**





M SOCIAL

Custom Street West

P3

P1

P2

Lower Hobson Street

Lower Hobson Street Flyover

All dimension to be verified on site before producing shop drawings or commencing any work.  
Do not scale. The copyright of this drawing remains with Warren and Mahoney Architects New Zealand Ltd.

Revisions

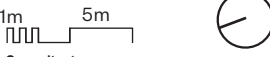
F	26/09/2025	FAST-TRACK APPLICATION ISSUE
G	03/10/2025	FAST-TRACK APPLICATION ISSUE

REFER TO DESIGN REPORT FOR PLANTING AND MATERIALS/FURNITURE STRATEGY

Notes

Threshold Space	1
Programmable Space	2
Dwell space - Informal Seating	3
Stage & Gathering Point	4
Street Threshold Dwell Spaces	5
SU-106 Paving	6
SU-107 Paving	7
ST-003/ST-004 Seating Terraces & Steps	8
Accessible Lift	9
FU-001 Seating	10
FU-004 Cycle Parking - City Centre Narrow Hoop	11
FU-005 Play Trail	12
SR-001 Windscreen / Artwork	13
Native Tree - Nom. 400L/1000L specimen	14
Existing Footpath	15
Hotel PUDO	16
Wind Mitigation Planting	17

1:300 at A3



Consultants

**WARREN AND MAHONEY Architect**

RCP  
Project Manager  
RLB  
Quantity Surveyor  
HOLMES  
Structural Engineer  
NDY  
Services Engineer  
JENSEN HUGHES  
Fire Engineer  
TONKIN + TAYLOR  
Civil Engineer  
FLOW  
Traffic Engineer  
MOTT MACDONALD  
Facade Engineer

Client

PRECINCT PROPERTIES

**Warren and Mahoney Architects**  
New Zealand Ltd

Ground Floor, Mason Bros.  
139 Pakenham Street West Wynyard  
Quarter  
Auckland 1010  
New Zealand  
Phone + 64 9 309 4894

Registered Architects and Designers  
www.warrenandmahoney.com

Project Title

**DOWNTOWN  
CARPARK  
DEVELOPMENT**

Drawing Title

**LANDSCAPE CONCEPT  
TE URUNGA HAU**

Drawing Status

**FAST-TRACK  
APPLICATION**

Drawing Details

Scale	1:600 @ A3
Date	03/10/2025
Job No	9234
Drawn	BT
Checked	MH

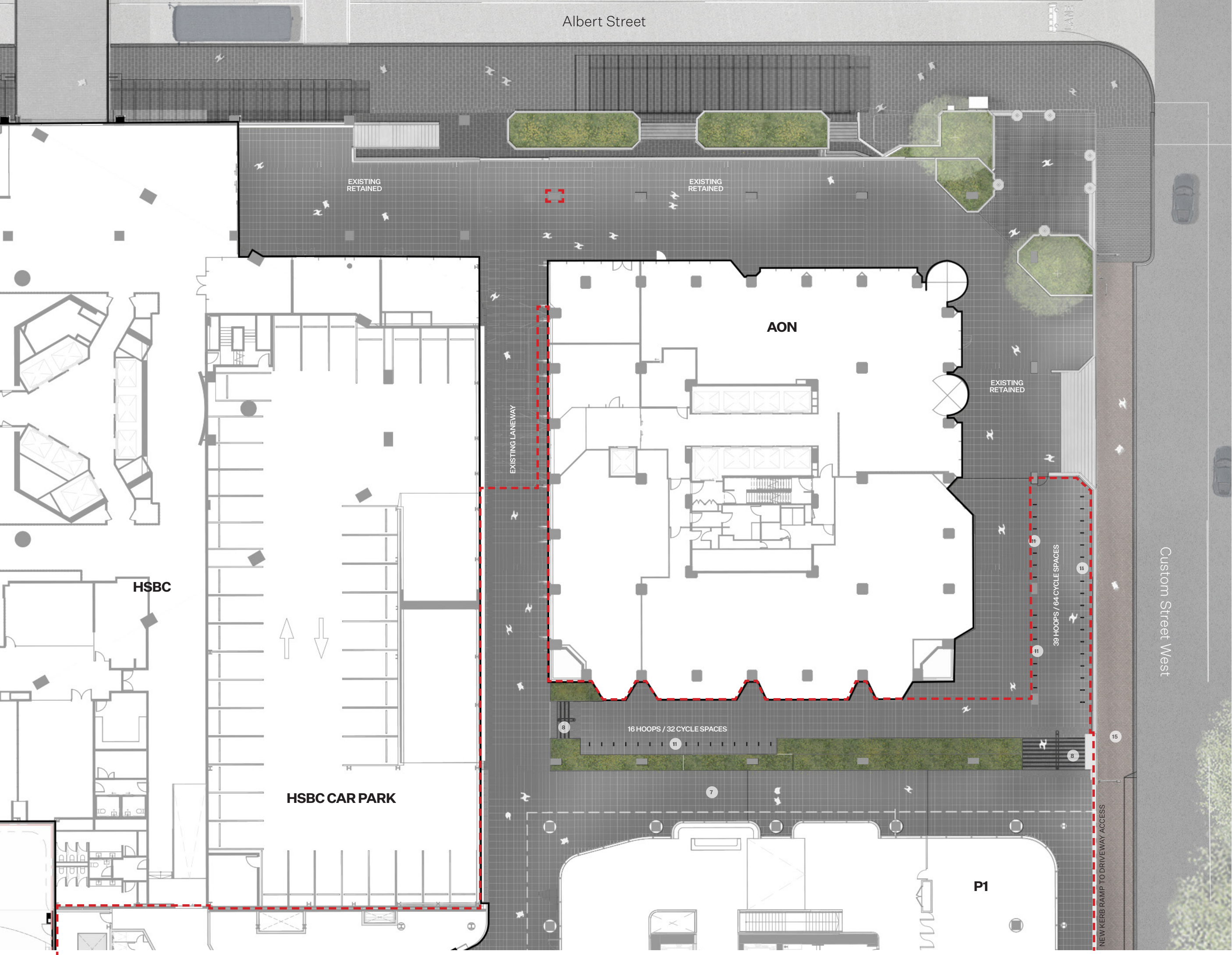
Drawing No

L01.101

Revision

G





All dimension to be verified on site before producing shop drawings or commencing any work.  
Do not scale. The copyright of this drawing remains with Warren and Mahoney Architects New Zealand Ltd.

**Revisions**

F	26/09/2025	FAST-TRACK APPLICATION ISSUE
G	03/10/2025	FAST-TRACK APPLICATION ISSUE

REFER TO DESIGN REPORT FOR PLANTING AND MATERIALS/FURNITURE STRATEGY

**Notes**

Threshold Space	1
Programmable Space	2
Dwell space - Informal Seating	3
Stage & Gathering Point	4
Street Threshold Dwell Spaces	5
SU-106 Paving	6
SU-107 Paving	7
ST-003/ST-004 Seating Terraces & Steps	8
Accessible Lift	9
FU-001 Seating	10
FU-004 Cycle Parking - City Centre Narrow Hoop	11
FU-005 Play Trail	12
SR-001 Windscreen / Artwork	13
Native Tree - Nom. 400L/1000L specimen	14
Existing Footpath	15
Hotel PUDO	16
Wind Mitigation Planting	17

1:300 at A3

1m 5m

**Consultants**

**WARREN AND MAHONEY Architect**

RCP  
Project Manager  
RLB  
Quantity Surveyor  
HOLMES  
Structural Engineer  
NDY  
Services Engineer  
JENSEN HUGHES  
Fire Engineer  
TONKIN + TAYLOR  
Civil Engineer  
FLOW  
Traffic Engineer  
MOTT MACDONALD  
Facade Engineer

**Client**

PRECINCT PROPERTIES

**Warren and Mahoney Architects  
New Zealand Ltd**

Ground Floor, Mason Bros.  
139 Pakenham Street West Wynyard  
Quarter  
Auckland 1010  
New Zealand  
Phone + 64 9 309 4894

Registered Architects and Designers  
www.warrenandmahoney.com

**Project Title**

**DOWNTOWN  
CARPARK  
DEVELOPMENT**

**Drawing Title**

**LANDSCAPE CONCEPT  
AON PODIUM**

**Drawing Status**

**FAST-TRACK  
APPLICATION**

**Drawing Details**

Scale	1:600 @ A3
Date	03/10/2025
Job No	9234
Drawn	BT
Checked	MH

**Drawing No**  
L01.102

**Revision**  
G

**WARREN AND MAHONEY**



REFER TO DESIGN REPORT FOR PLANTING AND MATERIALS/FURNITURE STRATEGY

**Notes**

Threshold Space	1
Programmable Space	2
Dwell space - Informal Seating	3
Stage & Gathering Point	4
Street Threshold Dwell Spaces	5
SU-106 Paving	6
SU-107 Paving	7
ST-003/ST-004 Seating Terraces & Steps	8
Accessible Lift	9
FU-001 Seating	10
FU-004 Cycle Parking - City Centre Narrow Hoop	11
FU-005 Play Trail	12
SR-001 Windscreen / Artwork	13
Native Tree - Nom. 400L/1000L specimen	14
Existing Footpath	15
Hotel PUDO	16
Wind Mitigation Planting	17

**Consultants**

**WARREN AND MAHONEY Architect**

RCP  
Project Manager  
RLB  
Quantity Surveyor  
HOLMES  
Structural Engineer  
NDY  
Services Engineer  
JENSEN HUGHES  
Fire Engineer  
TONKIN + TAYLOR  
Civil Engineer  
FLOW  
Traffic Engineer  
MOTT MACDONALD  
Facade Engineer

**Client**

PRECINCT PROPERTIES

**Warren and Mahoney Architects  
New Zealand Ltd**

Ground Floor, Mason Bros.  
139 Pakenham Street West Wynyard Quarter  
Auckland 1010  
New Zealand  
Phone + 64 9 309 4894

Registered Architects and Designers  
www.warrenandmahoney.com

**Project Title**

**DOWNTOWN CARPARK DEVELOPMENT**

**Drawing Title**

**LANDSCAPE SECTIONS  
TE URUNGA HAU**

**Drawing Status**

**FAST-TRACK APPLICATION**

**Drawing Details**

Scale	NTS
Date	03/10/2025
Job No	9234
Drawn	KB
Checked	MH

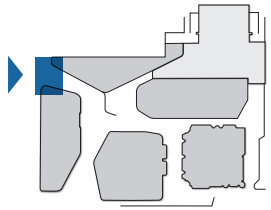
**Drawing No**

**L20.101**

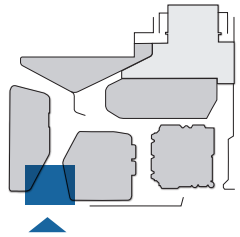
**Revision**

**F**

Section 01



Section 02





REFER TO DESIGN REPORT FOR PLANTING AND MATERIALS/FURNITURE STRATEGY

**Notes**

Threshold Space	1
Programmable Space	2
Dwell space - Informal Seating	3
Stage & Gathering Point	4
Street Threshold Dwell Spaces	5
SU-106 Paving	6
SU-107 Paving	7
ST-003/ST-004 Seating Terraces & Steps	8
Accessible Lift	9
FU-001 Seating	10
FU-004 Cycle Parking - City Centre Narrow Hoop	11
FU-005 Play Trail	12
SR-001 Windscreen / Artwork	13
Native Tree - Nom. 400L/1000L specimen	14
Existing Footpath	15
Hotel PUDO	16
Wind Mitigation Planting	17

**Consultants**

**WARREN AND MAHONEY Architect**

RCP  
Project Manager  
RLB  
Quantity Surveyor  
HOLMES  
Structural Engineer  
NDY  
Services Engineer  
JENSEN HUGHES  
Fire Engineer  
TONKIN + TAYLOR  
Civil Engineer  
FLOW  
Traffic Engineer  
MOTT MACDONALD  
Facade Engineer

**Client**

PRECINCT PROPERTIES

**Warren and Mahoney Architects  
New Zealand Ltd**

Ground Floor, Mason Bros.  
139 Pakenham Street West Wynyard  
Quarter  
Auckland 1010  
New Zealand  
Phone + 64 9 309 4894

Registered Architects and Designers  
www.warrenandmahoney.com

**Project Title**

**DOWNTOWN  
CARPARK  
DEVELOPMENT**

**Drawing Title**

**LANDSCAPE SECTIONS  
TE URUNGA HAU**

**Drawing Status**

**FAST-TRACK  
APPLICATION**

**Drawing Details**

Scale	NTS
Date	03/10/2025
Job No	9234
Drawn	KB
Checked	MH

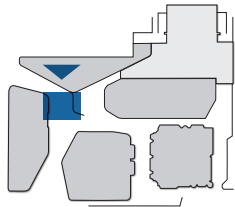
**Drawing No**

**L20.102**

**Revision**

**(F)**

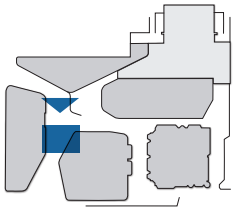
## Section 03



IRRIGATION  
DRAINAGE

Nom. 7300  
Nom. 5100

## Section 04



IRRIGATION  
DRAINAGE

Nom. 4900  
Nom. 3100  
Nom. 5500



REFER TO DESIGN REPORT FOR PLANTING AND MATERIALS/FURNITURE STRATEGY

**Notes**

Threshold Space	1
Programmable Space	2
Dwell space - Informal Seating	3
Stage & Gathering Point	4
Street Threshold Dwell Spaces	5
SU-106 Paving	6
SU-107 Paving	7
ST-003/ST-004 Seating Terraces & Steps	8
Accessible Lift	9
FU-001 Seating	10
FU-004 Cycle Parking - City Centre Narrow Hoop	11
FU-005 Play Trail	12
SR-001 Windscreen / Artwork	13
Native Tree - Nom. 400L/1000L specimen	14
Existing Footpath	15
Hotel PUDDO	16
Wind Mitigation Planting	17

**Consultants**

**WARREN AND MAHONEY Architect**

RCP  
Project Manager  
RLB  
Quantity Surveyor  
HOLMES  
Structural Engineer  
NDY  
Services Engineer  
JENSEN HUGHES  
Fire Engineer  
TONKIN + TAYLOR  
Civil Engineer  
FLOW  
Traffic Engineer  
MOTT MACDONALD  
Facade Engineer

**Client**

PRECINCT PROPERTIES

**Warren and Mahoney Architects  
New Zealand Ltd**

Ground Floor, Mason Bros.  
139 Pakenham Street West Wynyard  
Quarter  
Auckland 1010  
New Zealand  
Phone + 64 9 309 4894

Registered Architects and Designers  
www.warrenandmahoney.com

**Project Title**

**DOWNTOWN  
CARPARK  
DEVELOPMENT**

**Drawing Title**

**LANDSCAPE SECTIONS  
TE URUNGA HAU**

**Drawing Status**

**FAST-TRACK  
APPLICATION**

**Drawing Details**

Scale	NTS
Date	03/10/2025
Job No	9234
Drawn	KB
Checked	MH

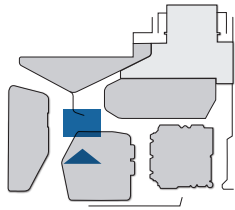
**Drawing No**

**L20.103**

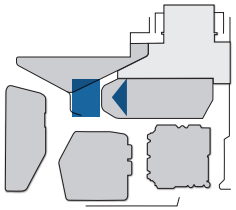
**Revision**

**F**

## Section 05

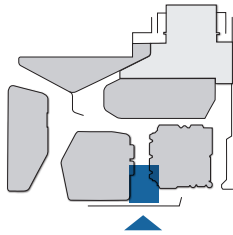


## Section 06

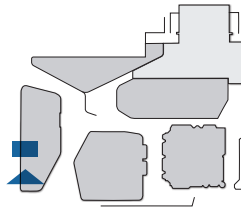




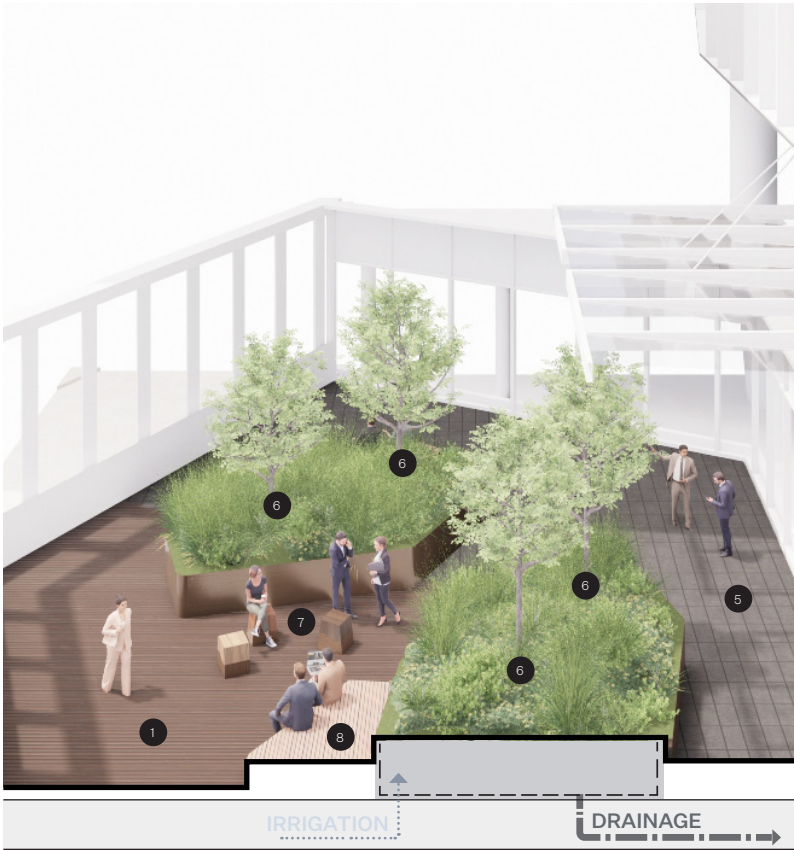
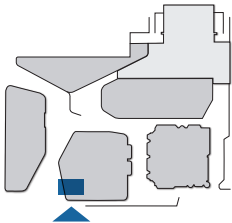
Section 7



Section 8



Section 9



All dimension to be verified on site before producing shop drawings or commencing any work.  
Do not scale. The copyright of this drawing remains with Warren and Mahoney Architects New Zealand Ltd.

Revisions

E	26/09/2025	FAST-TRACK APPLICATION ISSUE
F	03/10/2025	FAST-TRACK APPLICATION ISSUE

REFER TO DESIGN REPORT FOR PLANTING AND MATERIALS/FURNITURE STRATEGY

Notes

Timber Decking	1
Sedum Roof	2
Ballast Roof	3
Balustrade	4
SU-107 Paving	5
Native Tree - Nom. 160/400L specimen	6
Dwell space - Informal Seating	7
FU-001 Seating	8

Consultants

**WARREN AND MAHONEY**  
Architect

RCP  
Project Manager  
RLB  
Quantity Surveyor  
HOLMES  
Structural Engineer  
NDY  
Services Engineer  
JENSEN HUGHES  
Fire Engineer  
TONKIN + TAYLOR  
Civil Engineer  
FLOW  
Traffic Engineer  
MOTT MACDONALD  
Facade Engineer

Client

PRECINCT PROPERTIES

**Warren and Mahoney Architects**  
New Zealand Ltd

Ground Floor, Mason Bros.  
139 Pakenham Street West Wynyard  
Quarter  
Auckland 1010  
New Zealand  
Phone + 64 9 309 4894

Registered Architects and Designers  
www.warrenandmahoney.com

Project Title

**DOWNTOWN  
CARPARK  
DEVELOPMENT**

Drawing Title

**LANDSCAPE SECTIONS  
TE URUNGA HAU**

Drawing Status

**FAST-TRACK  
APPLICATION**

Drawing Details

Scale	NTS
Date	03/10/2025
Job No	9234
Drawn	KB
Checked	MH

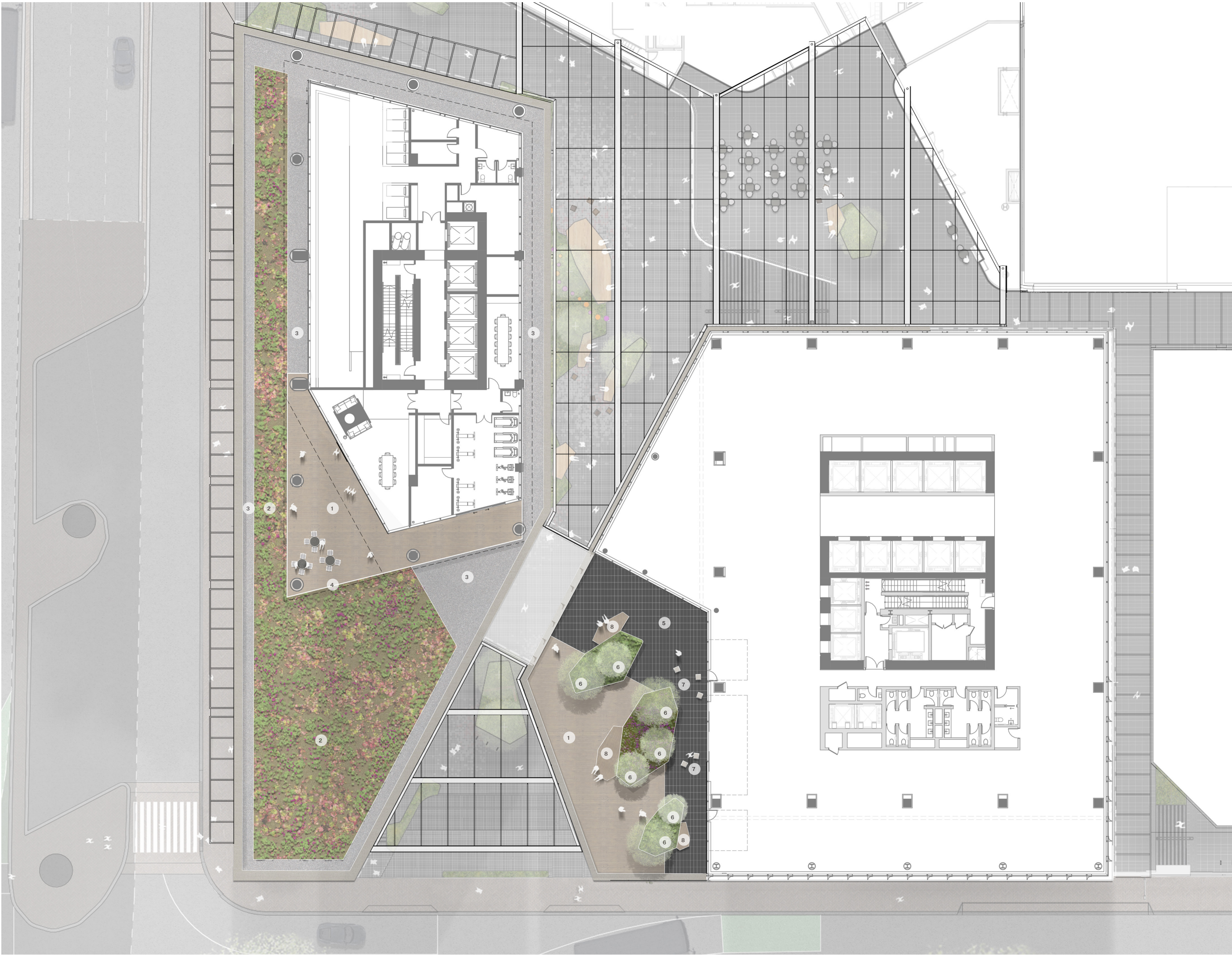
Drawing No

L20.104

Revision

(F)





All dimension to be verified on site before producing shop drawings or commencing any work.  
Do not scale. The copyright of this drawing remains with Warren and Mahoney Architects New Zealand Ltd.

Revisions

F	26/09/2025	FAST-TRACK APPLICATION ISSUE
G	03/10/2025	FAST-TRACK APPLICATION ISSUE

REFER TO DESIGN REPORT FOR PLANTING AND MATERIALS/FURNITURE STRATEGY

Notes

Timber Decking	1
Sedum Roof	2
Ballast Roof	3
Balustrade	4
SU-107 Paving	5
Native Tree - Nom. 160/400L specimen	6
Dwell space - Informal Seating	7
FU-001 Seating	8

1:300 at A3

1m 5m



Consultants

**WARREN AND MAHONEY**  
Architect

RCP  
Project Manager  
RLB  
Quantity Surveyor  
HOLMES  
Structural Engineer  
NDY  
Services Engineer  
JENSEN HUGHES  
Fire Engineer  
TONKIN + TAYLOR  
Civil Engineer  
FLOW  
Traffic Engineer  
MOTT MACDONALD  
Facade Engineer

Client

PRECINCT PROPERTIES

**Warren and Mahoney Architects**  
New Zealand Ltd

Ground Floor, Mason Bros.  
139 Pakenham Street West Wynyard  
Quarter  
Auckland 1010  
New Zealand  
Phone + 64 9 309 4894

Registered Architects and Designers  
www.warrenandmahoney.com

Project Title

**DOWNTOWN  
CARPARK  
DEVELOPMENT**

Drawing Title

**LANDSCAPE CONCEPT  
ROOF TERRACE**

Drawing Status

**FAST-TRACK  
APPLICATION**

Drawing Details

Scale	1:300 @ A3
Date	03/10/2025
Job No	9234
Drawn	KB
Checked	MH

Drawing No

L01.103

Revision

G



