



CAD ref: 37470 - Scheme Plan (Issue E).dwg

do

DAVIS OGILVIE

ENGINEERS / SURVEYORS / PLANNERS

Davis Ogilvie & Partners Limited

Level 1, 24 Moorhouse Avenue, Addington, Christchurch 8140

Office 0800 999 333 Email hello@do.nz

www.do.nz

Proposed Subdivision of Section 26-27 and Part Section 29 Square 23, Part Section 58  
59-60, 62-64 Suburban North District, Lot 2 DP 564514, Part Section 11 District of  
Brook Street and Matai and Part Section 8 Square 23

Maitahi Village, Nelson

Stage 0

/ design	/ drawn	/ QA check	/ dwg
RB/BL	BL	BVB	<b>350</b>
/ scale @ A1	/ date	/ file	/ issue
1:5000	05/23	<b>39470</b>	<b>E</b>





CAD ref: 37470 - Scheme Plan (Issue E).dwg

E 02/25 Kaka Stream Boundary Updated RB

/ issue / date / reason / approved

do

DAVIS OGILVIE

ENGINEERS / SURVEYORS / PLANNERS

Davis Ogilvie & Partners Limited

Level 1, 24 Moorhouse Avenue, Addington, Christchurch 8140

Office 0800 999 333 Email hello@do.nz

www.do.nz

**Proposed Subdivision of Section 26-27 and Part Section 29 Square 23, Part Section 58 59-60, 62-64 Suburban North District, Lot 2 DP 564514, Part Section 11 District of Brook Street and Matai and Part Section 8 Square 23**

Maitahi Village, Nelson

Overall, Stages 1-11

/ design RB/BL / scale @ A1 1:4000 / drawn BL / date 05/23 / QA check BVB / file 39470 / dwg 351 / issue E





MEMORANDUM OF EASEMENTS			
NATURE	SERVIENT TEN LOT NO	TEN SHOWN	DOMINANT TENEMENT
RIGHT OF WAY (IN GROSS) AND RIGHT TO DRAIN WATER (IN GROSS)	1000	A	Nelson District Council
RIGHT (IN GROSS) TO DRAIN WATER	3000	B	Lot 505, 150, 151, 154, 155, 156, 157, 158, 160, 162

CAD ref: 37470 - Scheme Plan (Issue E).dwg

do

DAVIS OGILVIE

ENGINEERS / SURVEYORS / PLANNERS

Davis Ogilvie & Partners Limited

Level 1, 24 Moorhouse Avenue, Addington, Christchurch 8140

Office 0800 999 333 Email hello@do.nz

www.do.nz

Proposed Subdivision of Section 26-27 and Part Section 29 Square 23, Part Section 58  
59-60, 62-64 Suburban North District, Lot 2 DP 564514, Part Section 11 District of  
Brook Street and Matai and Part Section 8 Square 23

Maitahi Village, Nelson  
Stage 1

/ design  
RB/BL

/ scale @ A1  
1:1000

/ drawn  
BL

/ date  
05/23

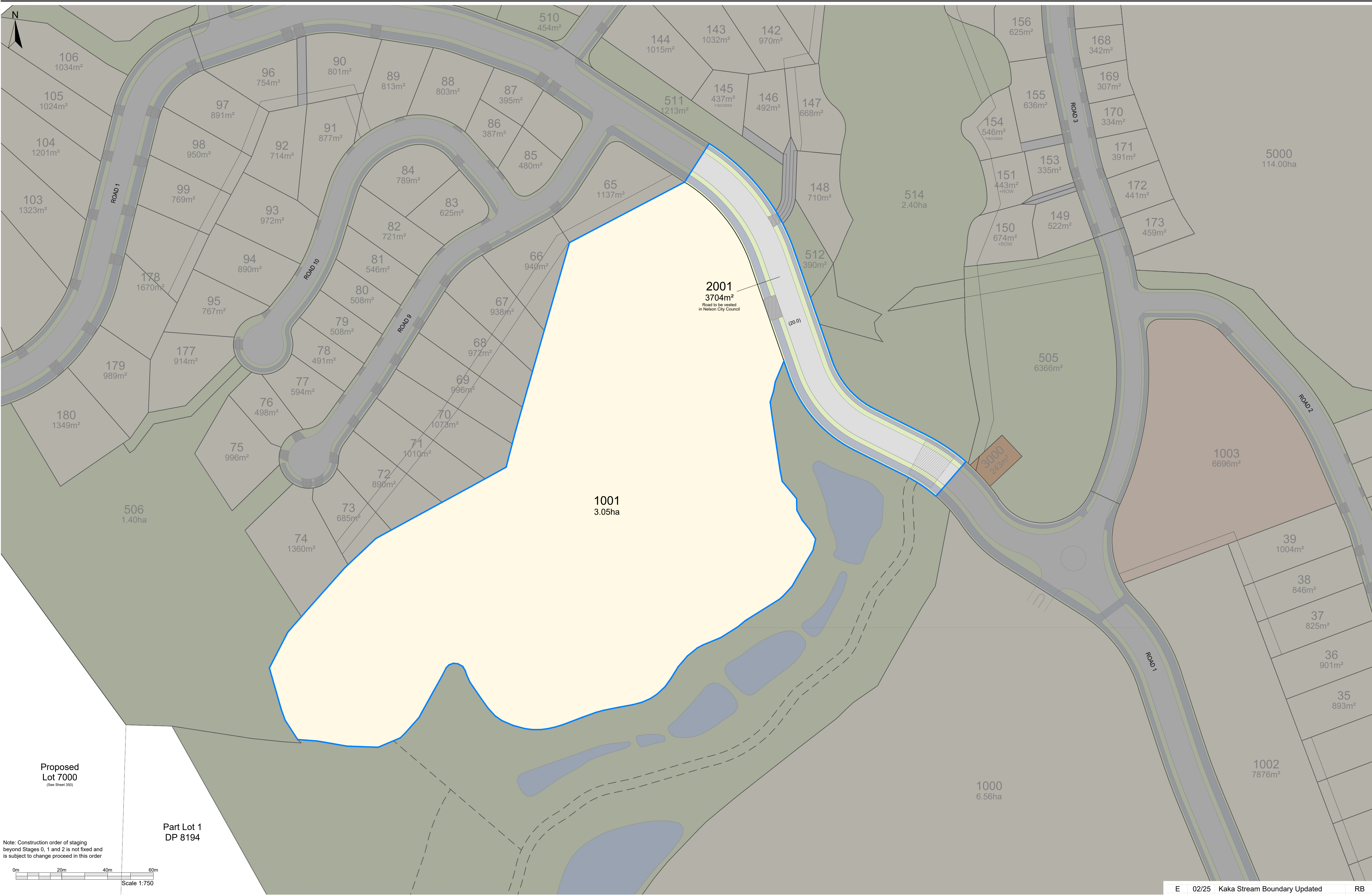
/ QA check  
BVB

/ file  
39470

/ design  
352

/ issue  
E





CAD ref: 37470 - Scheme Plan (Issue E).dwg

E / 02/25 / Kaka Stream Boundary Updated / RB  
/ issue / date / reason / approved

do

DAVIS OGILVIE

ENGINEERS / SURVEYORS / PLANNERS

Davis Ogilvie & Partners Limited

Level 1, 24 Moorhouse Avenue, Addington, Christchurch 8140

Office 0800 999 333 Email hello@do.nz

www.do.nz

Proposed Subdivision of Section 26-27 and Part Section 29 Square 23, Part Section 58  
59-60, 62-64 Suburban North District, Lot 2 DP 564514, Part Section 11 District of  
Brook Street and Matai and Part Section 8 Square 23

Maitahi Village, Nelson

Stage 2

/ design / drawn / QA check / dwg  
RB/BL BL BVB  
/ scale @ A1 / date / file / issue  
1:750 05/23 39470 E

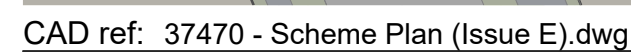
353  
/ issue



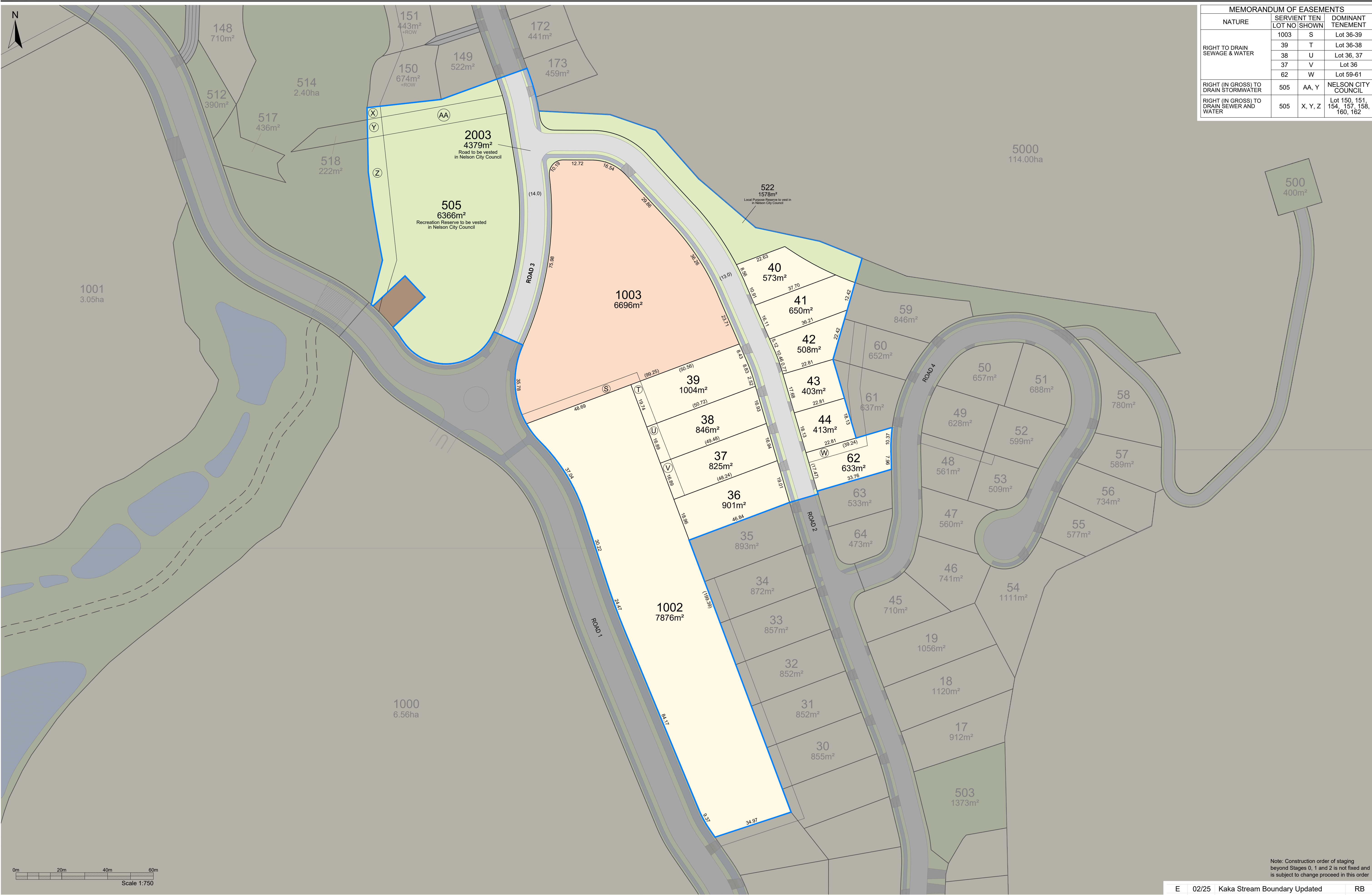


CAD ref: 37470 - Scheme Plan (Issue E).dwg





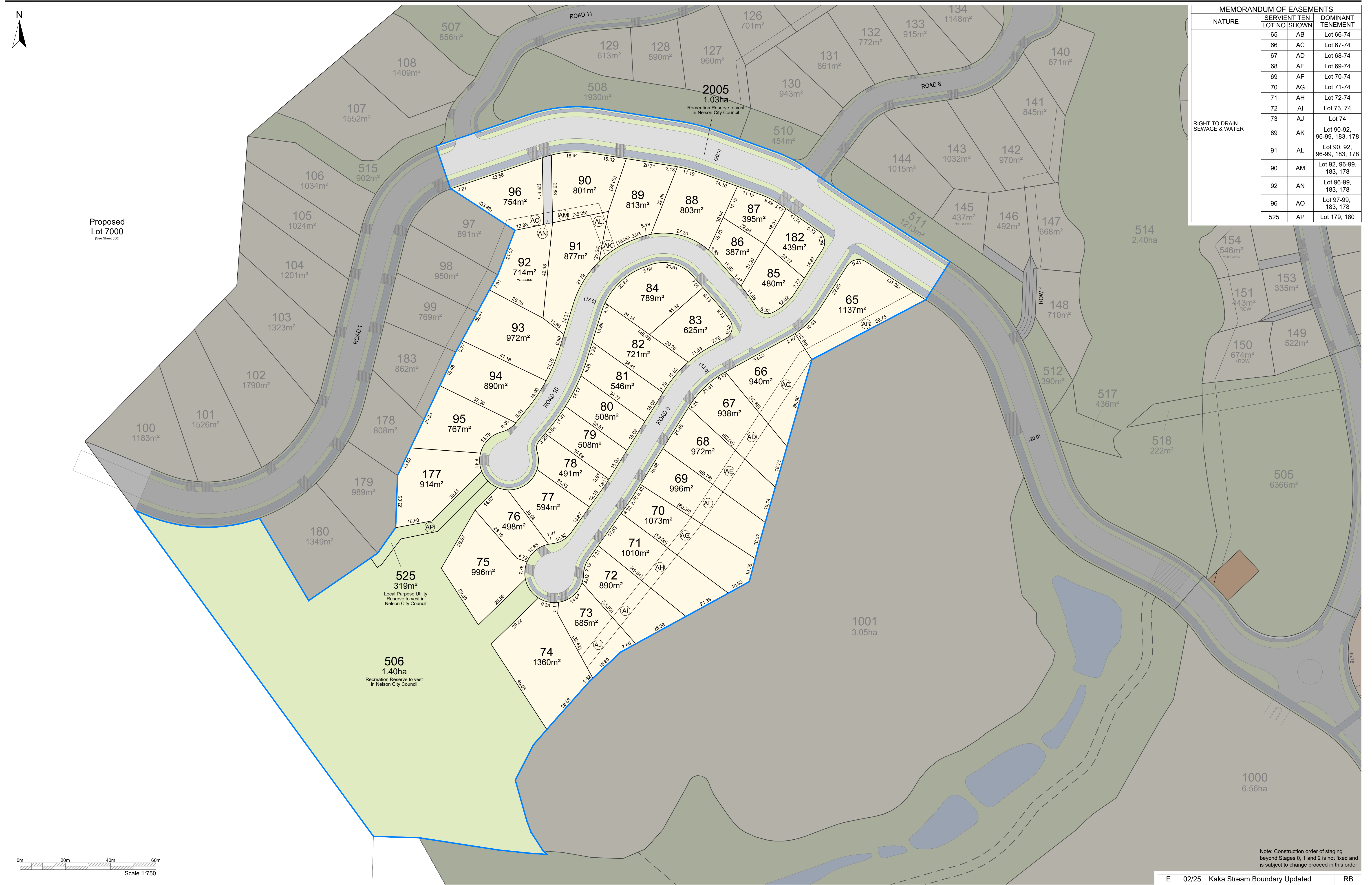




CAD ref: 37470 - Scheme Plan (Issue E).dwg

E 02/25 Kaka Stream Boundary Updated RB  
/ issue / date / reason / approved





Note: Construction order of staging beyond Stages 0, 1 and 2 is not fixed and is subject to change proceed in this order

E	02/25	Kaka Stream Boundary Updated	RB
/ issue	/ date	/ reason	/ approved

CAD ref: 37470 - Scheme Plan (Issue E).dwg

**do** DAVIS OGILVIE  
ENGINEERS / SURVEYORS / PLANNERS

Davis Ogilvie & Partners Limited  
Level 1, 24 Moorhouse Avenue, Addington, Christchurch 8140  
Office 0800 999 333 Email [hello@do.nz](mailto:hello@do.nz)  
[www.do.nz](http://www.do.nz)

**Proposed Subdivision of Section 26-27 and Part Section 29 Square 23, Part Section 58 59-60, 62-64 Suburban North District, Lot 2 DP 564514, Part Section 11 District of Brook Street and Matai and Part Section 8 Square 23**

# Maitahi Village, Nelson

## Stage 6

/ design	/ drawn	/ QA check	/ dwg
RB/BL	BL	BVB	<b>357</b>
/ scale @ A1	/ date	/ file	/ issue
1:750	05/23	<b>39470</b>	<b>E</b>





0m 5m 10m 20m 30m 40m  
Scale 1:500

Note: Construction order of staging beyond Stages 0, 1 and 2 is not fixed and is subject to change proceed in this order

CAD ref: 37470 - Scheme Plan (Issue E).dwg

do DAVIS OGILVIE  
ENGINEERS / SURVEYORS / PLANNERS

Davis Ogilvie & Partners Limited  
Level 1, 24 Moorhouse Avenue, Addington, Christchurch 8140  
Office 0800 999 333 Email hello@do.nz  
www.do.nz

Proposed Subdivision of Section 26-27 and Part Section 29 Square 23, Part Section 58  
59-60, 62-64 Suburban North District, Lot 2 DP 564514, Part Section 11 District of  
Brook Street and Matai and Part Section 8 Square 23

Maitahi Village, Nelson  
Stage 7

/ design RB/BL  
/ scale @ A1 1:500

/ drawn BL  
/ date 05/23

/ QA check BVB  
/ file 39470

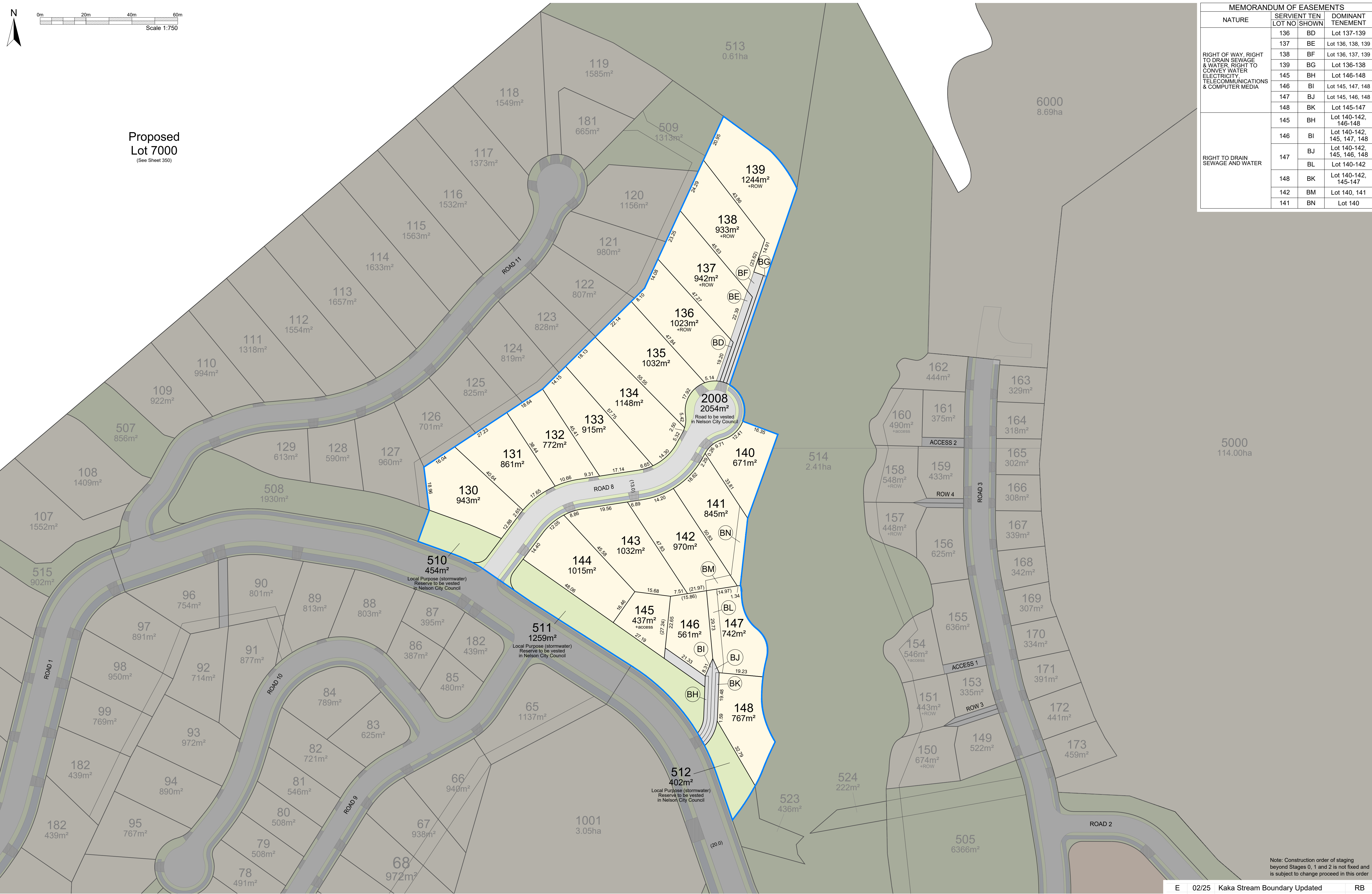
/ dwg 358  
/ issue E

E	02/25	Kaka Stream Boundary Updated	RB
/ issue	/ date	/ reason	/ approved









CAD ref: 37470 - Scheme Plan (Issue E).dwg

E 02/25 Kaka Stream Boundary Updated RB  
/ issue / date / reason / approved

**DAVIS OGILVIE**  
ENGINEERS / SURVEYORS / PLANNERS

Davis Ogilvie & Partners Limited  
Level 1, 24 Moorhouse Avenue, Addington, Christchurch 8140  
Office 0800 999 333 Email hello@do.nz  
www.do.nz

Proposed Subdivision of Section 26-27 and Part Section 29 Square 23, Part Section 58 59-60, 62-64 Suburban North District, Lot 2 DP 564514, Part Section 11 District of Brook Street and Matai and Part Section 8 Square 23

Maitahi Village, Nelson  
Stage 9

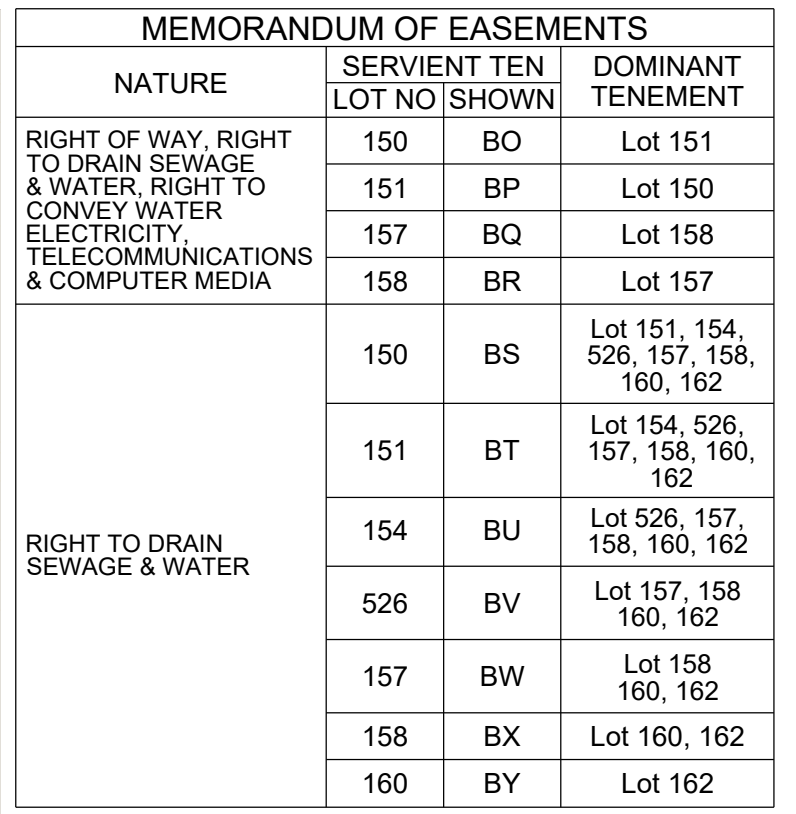
/ design RB/BL  
/ scale @A1 1:750

/ drawn BL  
/ date 05/23

/ QA check BVB  
/ file 39470

/ dwg 360  
/ issue E

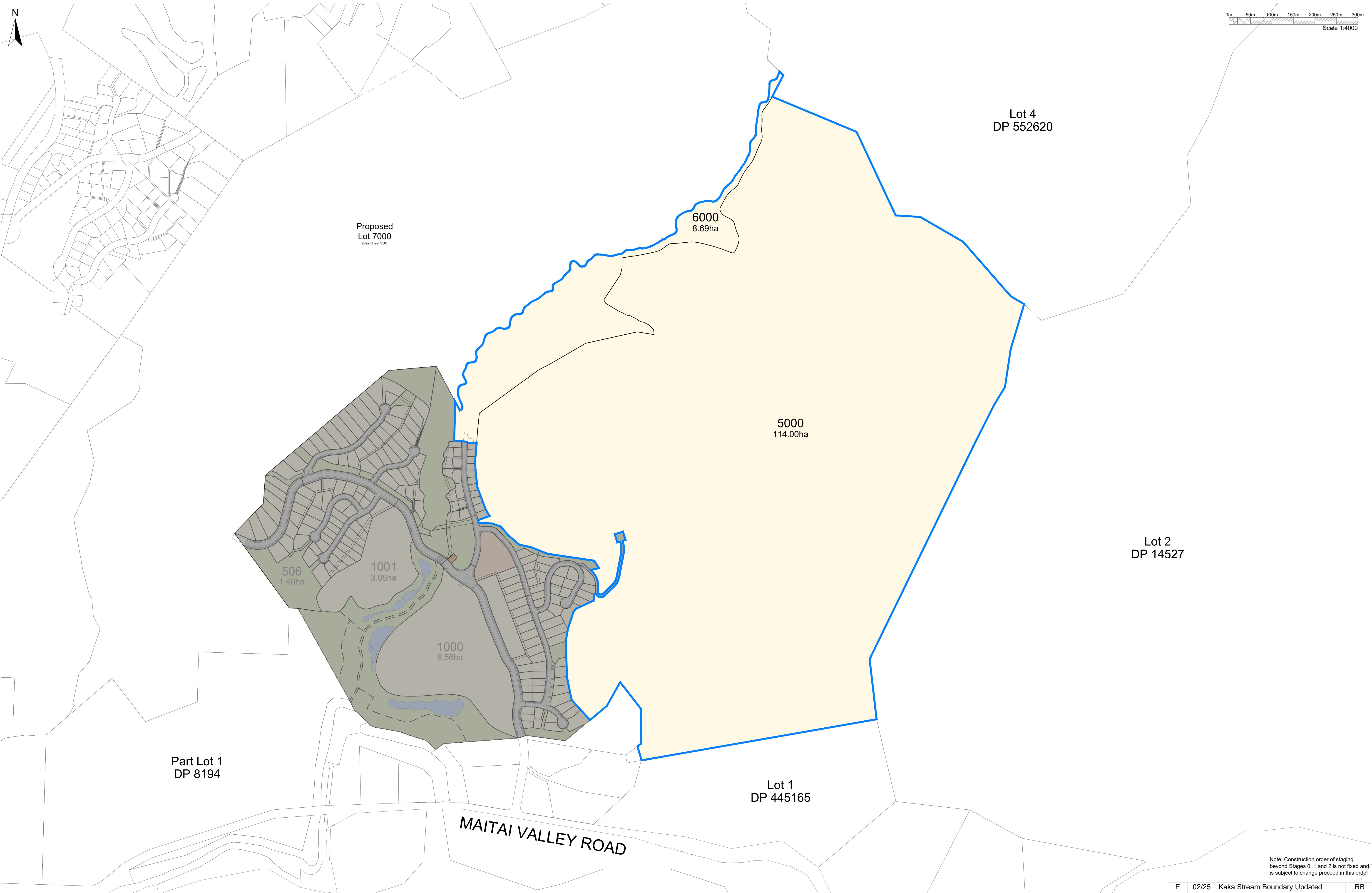




Note: Construction order of staging beyond Stages 0, 1 and 2 is not fixed and is subject to change proceed in this order

E	02/25	Kaka Stream Boundary Updated	RB
/ issue	/ date	/ reason	/ approved





CAD ref: 37470 - Scheme Plan (Issue E).dwg

do

DAVIS OGILVIE

ENGINEERS / SURVEYORS / PLANNERS

Davis Ogilvie & Partners Limited

Level 1, 24 Moorhouse Avenue, Addington, Christchurch 8140

Office 0800 999 333 Email hello@do.nz

www.do.nz

Proposed Subdivision of Section 26-27 and Part Section 29 Square 23, Part Section 58  
59-60, 62-64 Suburban North District, Lot 2 DP 564514, Part Section 11 District of  
Brook Street and Matai and Part Section 8 Square 23

Maitahi Village, Nelson  
Stage 11

Note: Construction order of staging beyond Stages 0, 1 and 2 is not fixed and is subject to change proceed in this order

E	02/25	Kaka Stream Boundary Updated	RB
/ issue	/ date	/ reason	/ approved

/ design	/ drawn	/ QA check	/ dwg
RB/BL	BL	BVB	362
/ scale @ A1	/ date	/ file	/ issue
1:4000	05/23	39470	E