

Legend

- Project Extent
- Contour 5m
- Contour 1m
- Existing SW Asset

Existing SW Conduit

- 150 - 225
- 225 - 300
- 300 - 375
- 375 - 1800

Pre Dev-100yrCC-Depth Band 1

- <= 0.02m
- 0.02m - 0.1m
- 0.10m - 0.15m
- 0.15m - 0.2m
- 0.2m - 0.5m
- 0.5m - 1.0m
- 1.0m - 2.0m
- >2m

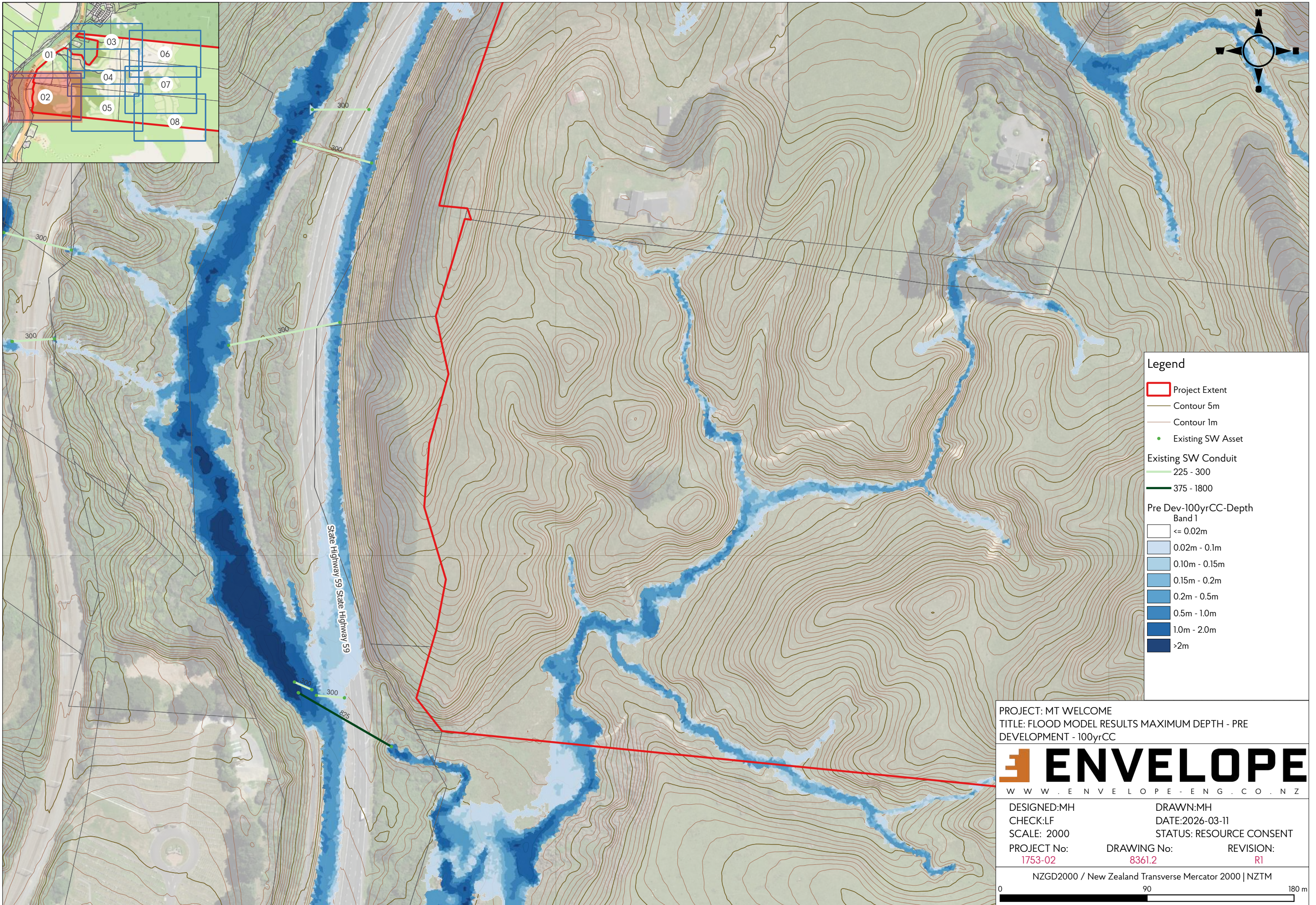
PROJECT: MT WELCOME
 TITLE: FLOOD MODEL RESULTS MAXIMUM DEPTH - PRE DEVELOPMENT - 100yrCC

ENVELOPE
 WWW.ENVELOPE-ENG.CO.NZ

DESIGNED:MH	DRAWN:MH
CHECK:LF	DATE:2026-03-11
SCALE: 2000	STATUS: RESOURCE CONSENT
PROJECT No: 1753-02	DRAWING No: 8361.1
	REVISION: R1

NZGD2000 / New Zealand Transverse Mercator 2000 | NZTM

0 90 180 m



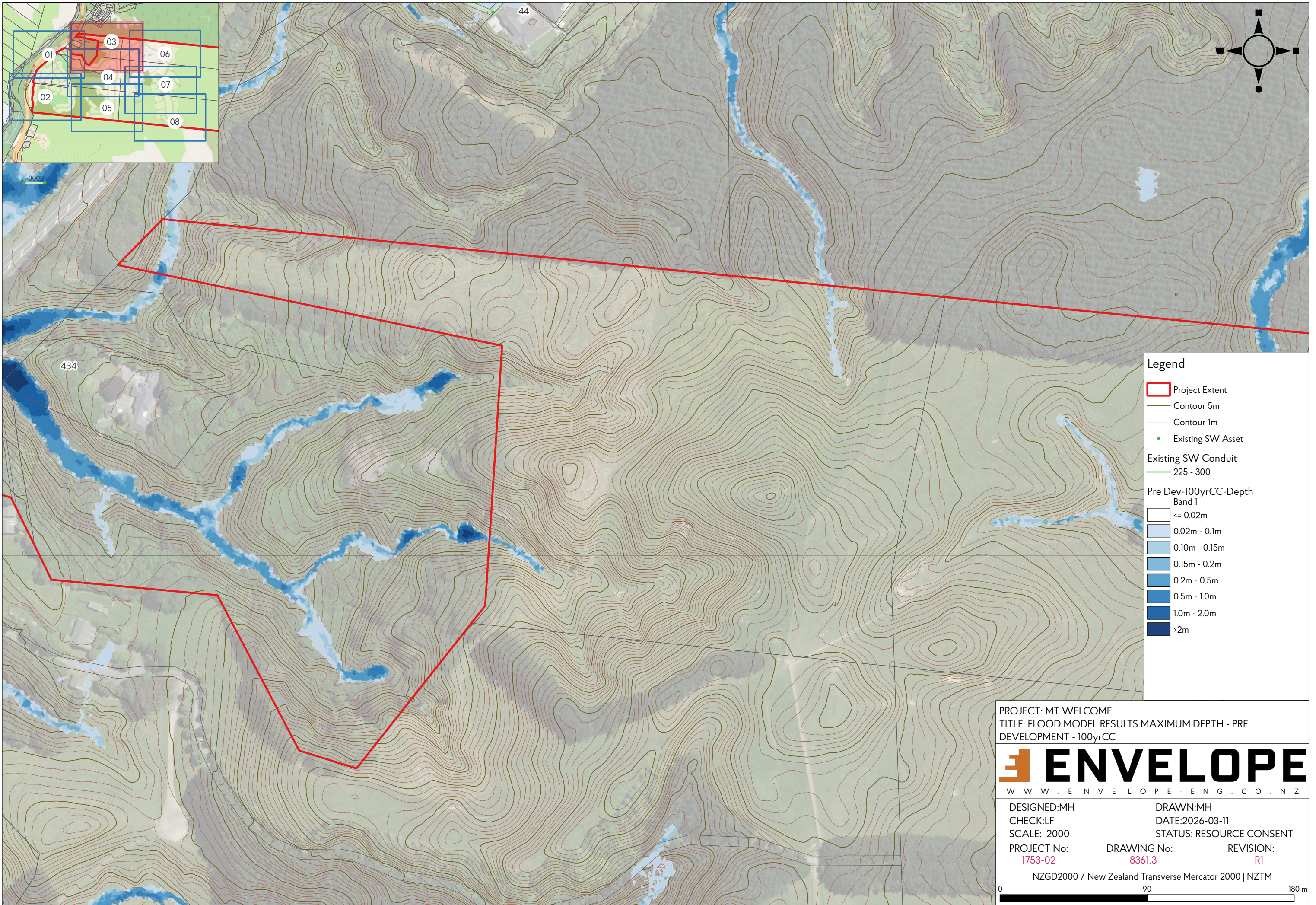
- Legend**
- Project Extent
 - Contour 5m
 - Contour 1m
 - Existing SW Asset
- Existing SW Conduit**
- 225 - 300
 - 375 - 1800
- Pre Dev-100yrCC-Depth Band 1**
- <= 0.02m
 - 0.02m - 0.1m
 - 0.10m - 0.15m
 - 0.15m - 0.2m
 - 0.2m - 0.5m
 - 0.5m - 1.0m
 - 1.0m - 2.0m
 - >2m

PROJECT: MT WELCOME
 TITLE: FLOOD MODEL RESULTS MAXIMUM DEPTH - PRE DEVELOPMENT - 100yrCC



DESIGNED:MH	DRAWN:MH	
CHECK:LF	DATE:2026-03-11	
SCALE: 2000	STATUS: RESOURCE CONSENT	
PROJECT No: 1753-02	DRAWING No: 8361.2	REVISION: R1

NZGD2000 / New Zealand Transverse Mercator 2000 | NZTM



- Legend**
- Project Extent
 - Contour 5m
 - Contour 1m
 - Existing SW Asset
- Existing SW Conduit
- 225 - 300
- Pre Dev-100yrCC-Depth Band 1
- <= 0.02m
 - 0.02m - 0.1m
 - 0.10m - 0.15m
 - 0.15m - 0.2m
 - 0.2m - 0.5m
 - 0.5m - 1.0m
 - 1.0m - 2.0m
 - >2m

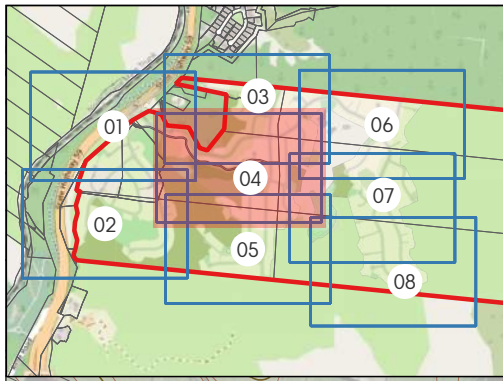
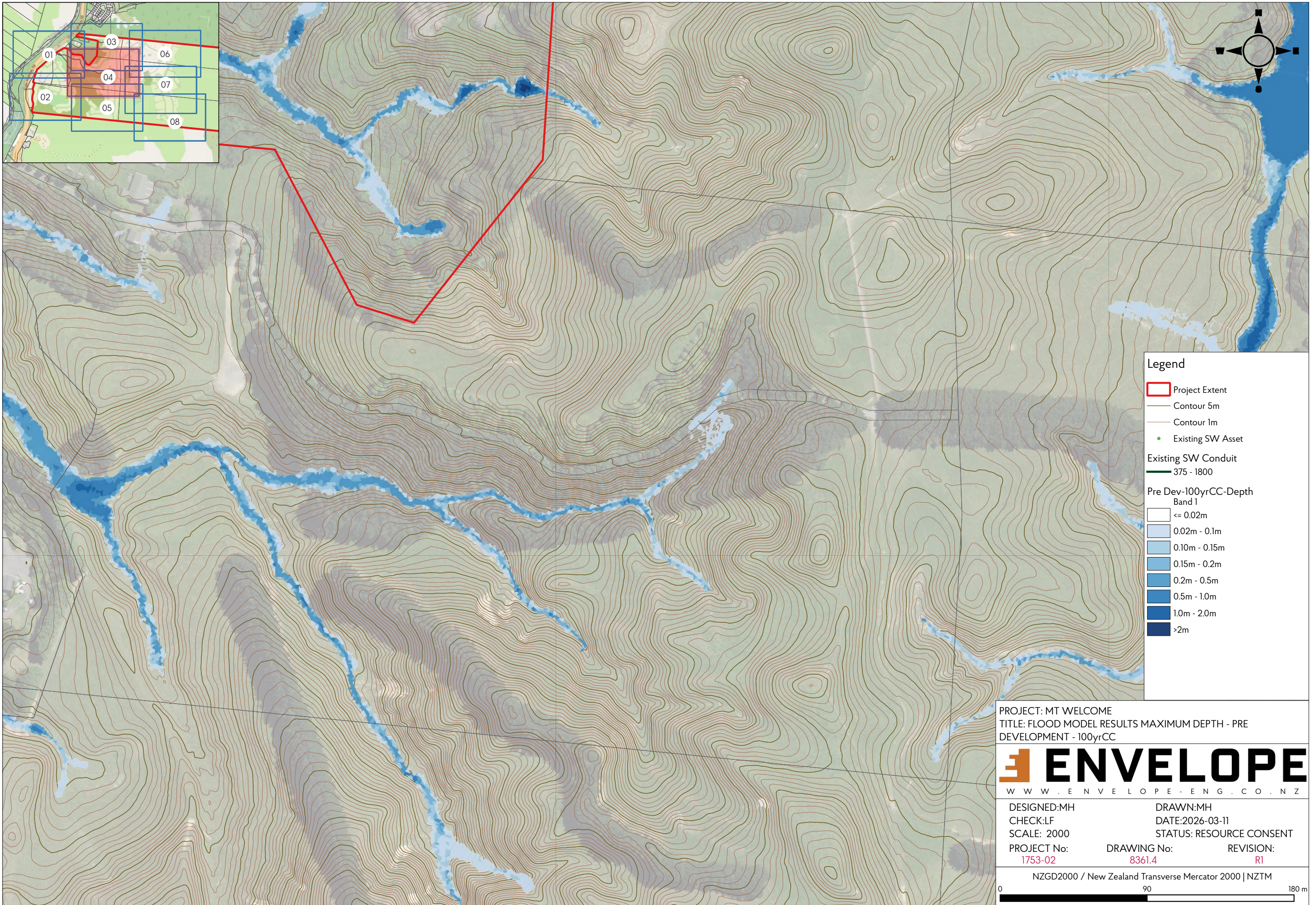
PROJECT: MT WELCOME
 TITLE: FLOOD MODEL RESULTS MAXIMUM DEPTH - PRE DEVELOPMENT - 100yrCC

ENVELOPE
 WWW.ENVELOPE-ENG.CO.NZ

DESIGNED:MH	DRAWN:MH	
CHECK:LF	DATE:2026-03-11	
SCALE: 2000	STATUS: RESOURCE CONSENT	
PROJECT No: 1753-02	DRAWING No: 8361.3	REVISION: R1

NZGD2000 / New Zealand Transverse Mercator 2000 | NZTM

0 90 180 m



- Legend**
- Project Extent
 - Contour 5m
 - Contour 1m
 - Existing SW Asset
- Existing SW Conduit**
- 375 - 1800
- Pre Dev-100yrCC-Depth Band 1**
- <= 0.02m
 - 0.02m - 0.1m
 - 0.10m - 0.15m
 - 0.15m - 0.2m
 - 0.2m - 0.5m
 - 0.5m - 1.0m
 - 1.0m - 2.0m
 - >2m

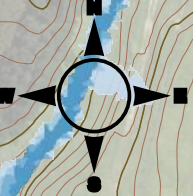
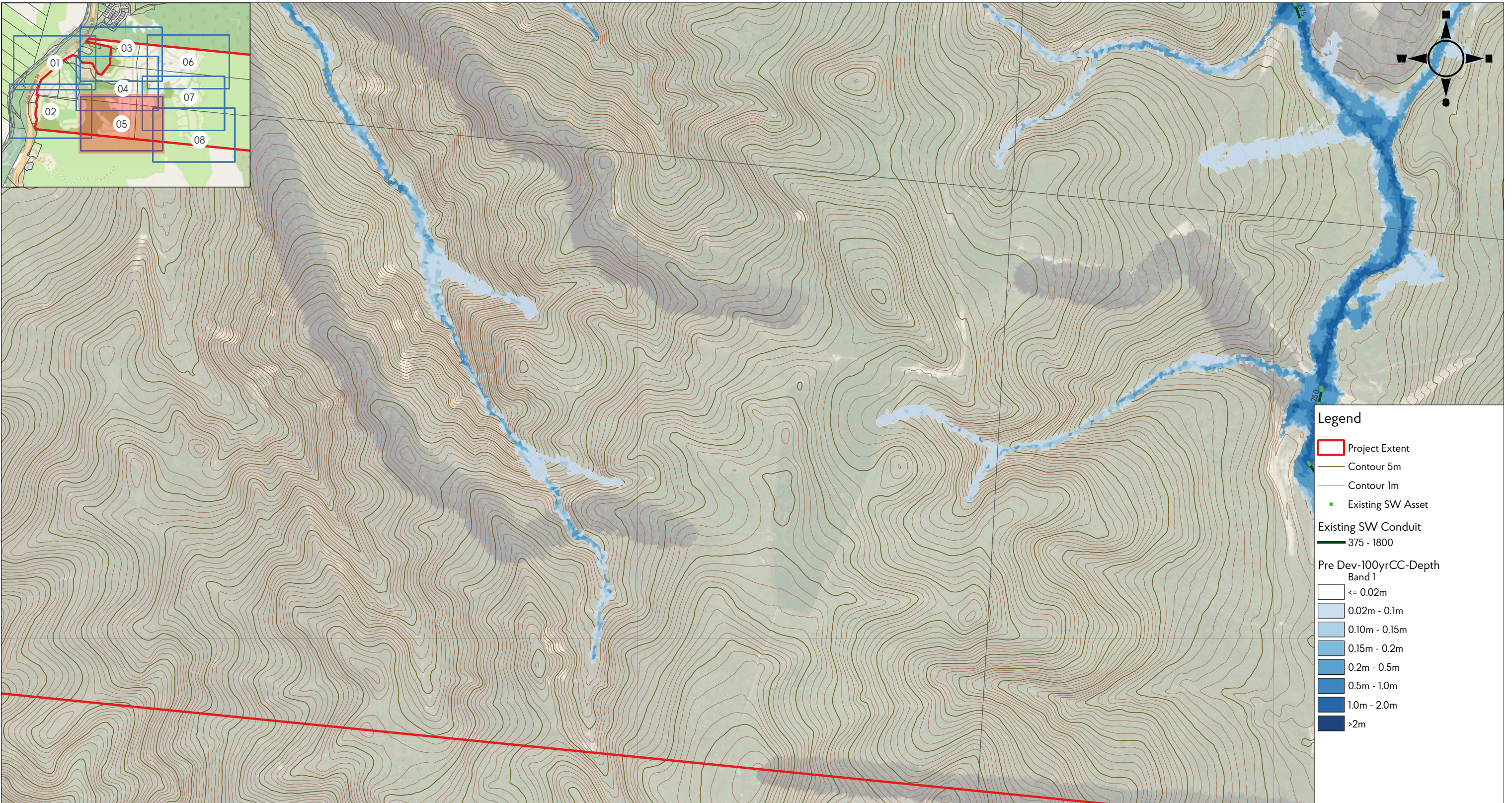
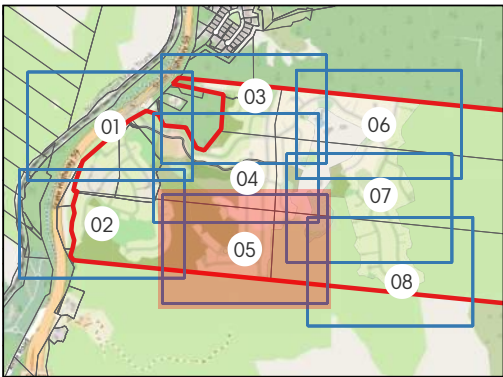
PROJECT: MT WELCOME
 TITLE: FLOOD MODEL RESULTS MAXIMUM DEPTH - PRE DEVELOPMENT - 100yrCC

ENVELOPE
 WWW.ENVELOPE-ENG.CO.NZ

DESIGNED:MH	DRAWN:MH	
CHECK:LF	DATE:2026-03-11	
SCALE: 2000	STATUS: RESOURCE CONSENT	
PROJECT No: 1753-02	DRAWING No: 8361.4	REVISION: R1

NZGD2000 / New Zealand Transverse Mercator 2000 | NZTM

0 90 180 m



Legend

- Project Extent
- Contour 5m
- Contour 1m
- Existing SW Asset

Existing SW Conduit
 375 - 1800

Pre Dev-100yrCC-Depth
 Band 1

- <= 0.02m
- 0.02m - 0.1m
- 0.10m - 0.15m
- 0.15m - 0.2m
- 0.2m - 0.5m
- 0.5m - 1.0m
- 1.0m - 2.0m
- >2m

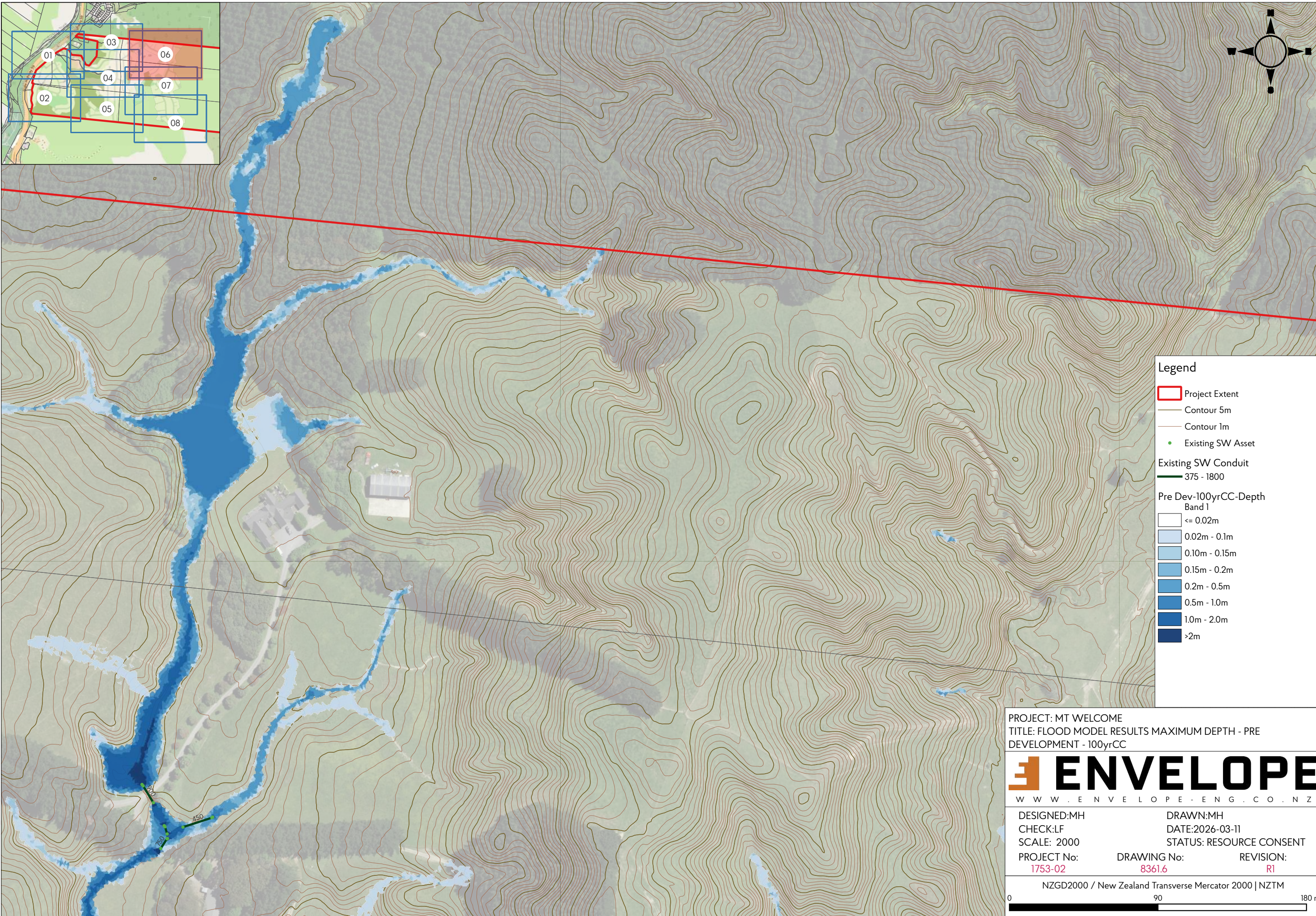
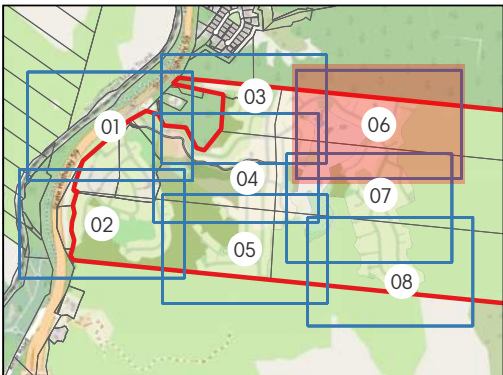
PROJECT: MT WELCOME
 TITLE: FLOOD MODEL RESULTS MAXIMUM DEPTH - PRE
 DEVELOPMENT - 100yrCC

ENVELOPE
 WWW.ENVELOPE-ENG.CO.NZ

DESIGNED:MH	DRAWN:MH	
CHECK:LF	DATE:2026-03-11	
SCALE: 2000	STATUS: RESOURCE CONSENT	
PROJECT No: 1753-02	DRAWING No: 8361.5	REVISION: R1

NZGD2000 / New Zealand Transverse Mercator 2000 | NZTM

0 90 180 m



Legend

- Project Extent
- Contour 5m
- Contour 1m
- Existing SW Asset

Existing SW Conduit

- 375 - 1800

Pre Dev-100yrCC-Depth Band 1

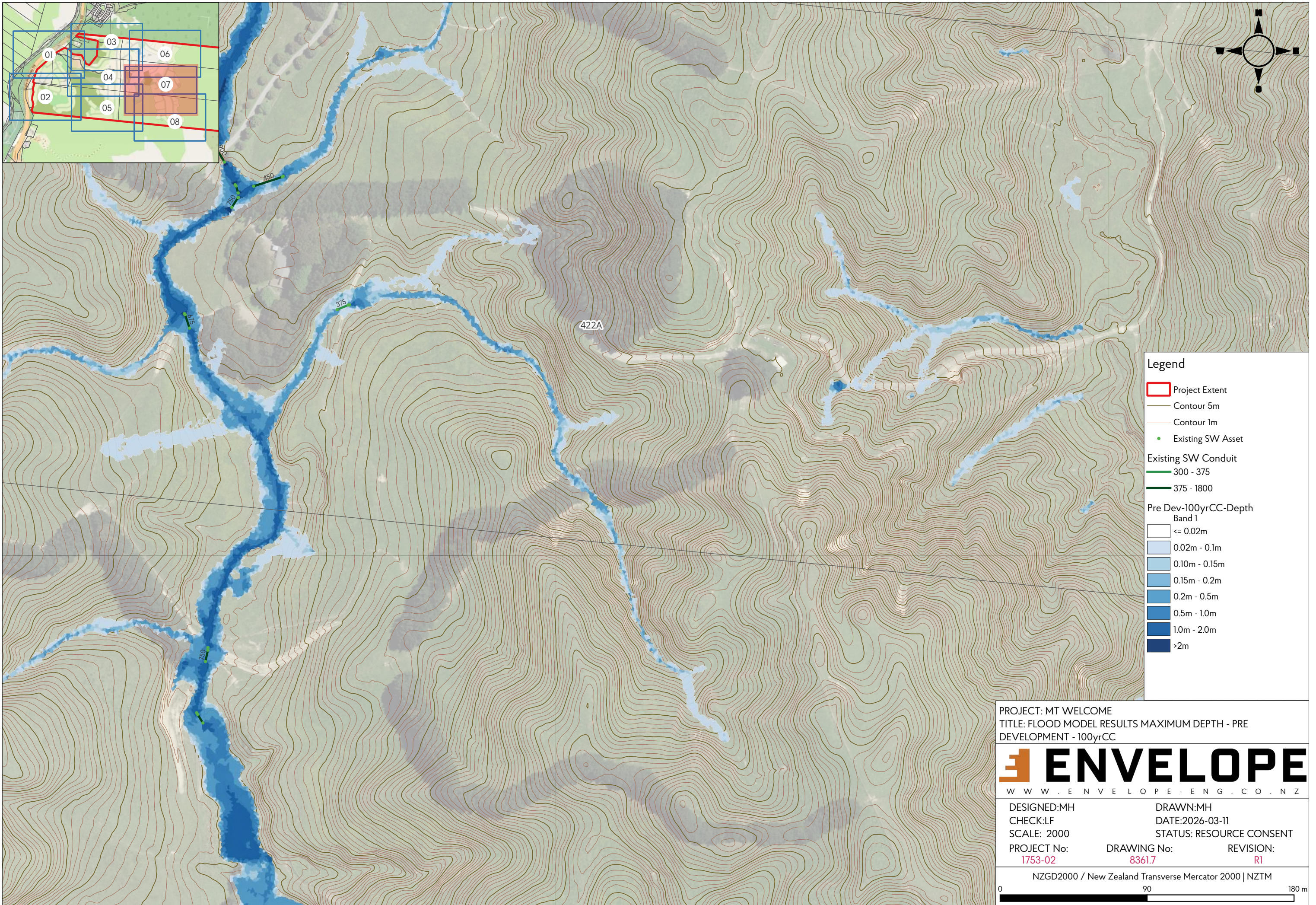
- <= 0.02m
- 0.02m - 0.1m
- 0.10m - 0.15m
- 0.15m - 0.2m
- 0.2m - 0.5m
- 0.5m - 1.0m
- 1.0m - 2.0m
- >2m

PROJECT: MT WELCOME
 TITLE: FLOOD MODEL RESULTS MAXIMUM DEPTH - PRE DEVELOPMENT - 100yrCC

ENVELOPE
 WWW.ENVELOPE-ENG.CO.NZ

DESIGNED:MH	DRAWN:MH	
CHECK:LF	DATE:2026-03-11	
SCALE: 2000	STATUS: RESOURCE CONSENT	
PROJECT No: 1753-02	DRAWING No: 8361.6	REVISION: R1

NZGD2000 / New Zealand Transverse Mercator 2000 | NZTM



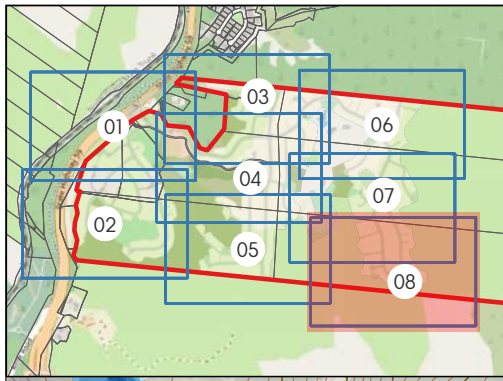
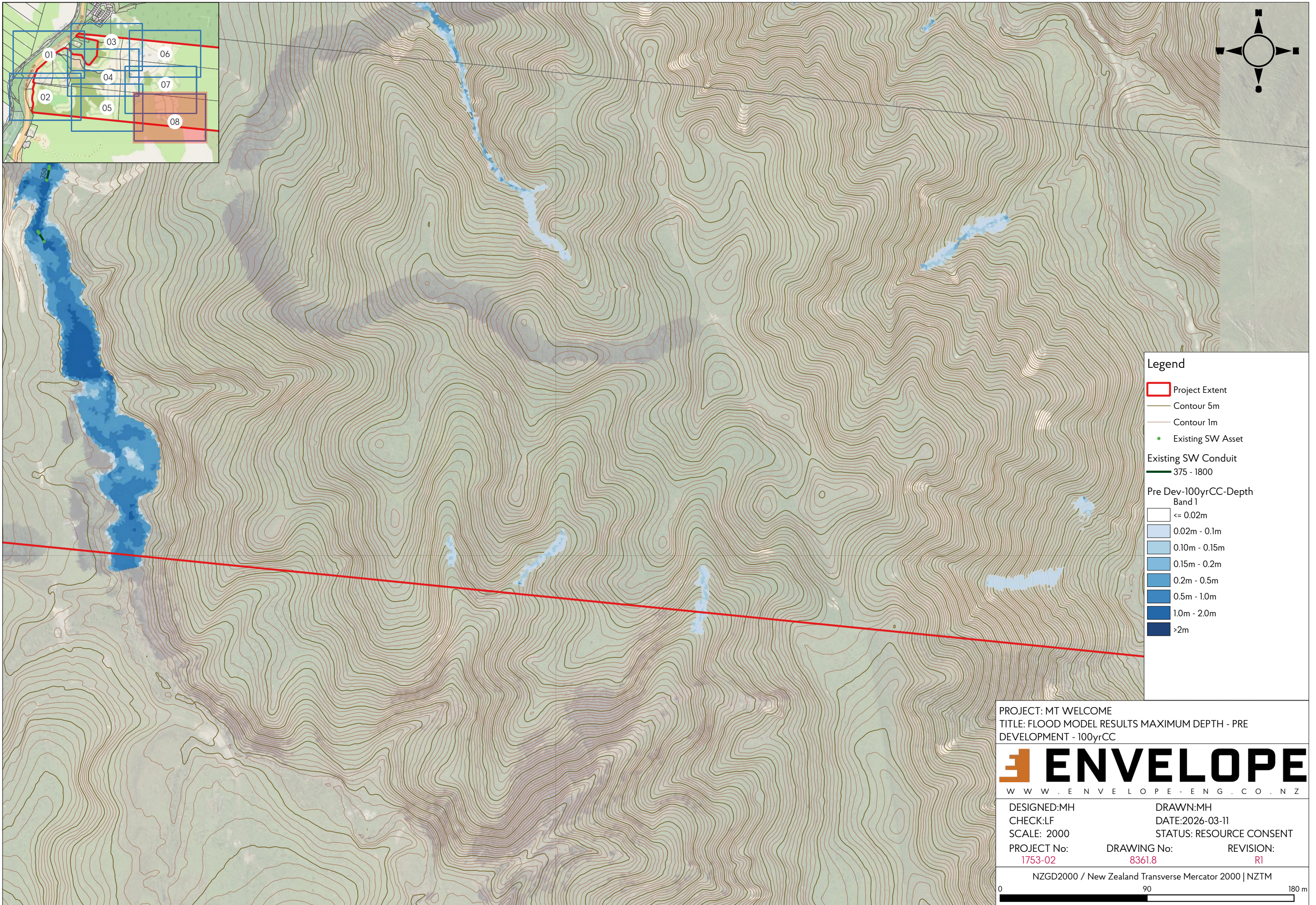
- Legend**
- Project Extent
 - Contour 5m
 - Contour 1m
 - Existing SW Asset
- Existing SW Conduit**
- 300 - 375
 - 375 - 1800
- Pre Dev-100yrCC-Depth Band 1**
- <= 0.02m
 - 0.02m - 0.1m
 - 0.10m - 0.15m
 - 0.15m - 0.2m
 - 0.2m - 0.5m
 - 0.5m - 1.0m
 - 1.0m - 2.0m
 - >2m

PROJECT: MT WELCOME
 TITLE: FLOOD MODEL RESULTS MAXIMUM DEPTH - PRE DEVELOPMENT - 100yrCC



DESIGNED:MH	DRAWN:MH	
CHECK:LF	DATE:2026-03-11	
SCALE: 2000	STATUS: RESOURCE CONSENT	
PROJECT No: 1753-02	DRAWING No: 8361.7	REVISION: R1

NZGD2000 / New Zealand Transverse Mercator 2000 | NZTM
 0 90 180 m



- Legend**
- Project Extent
 - Contour 5m
 - Contour 1m
 - Existing SW Asset
- Existing SW Conduit**
- 375 - 1800
- Pre Dev-100yrCC-Depth Band 1**
- <= 0.02m
 - 0.02m - 0.1m
 - 0.10m - 0.15m
 - 0.15m - 0.2m
 - 0.2m - 0.5m
 - 0.5m - 1.0m
 - 1.0m - 2.0m
 - >2m

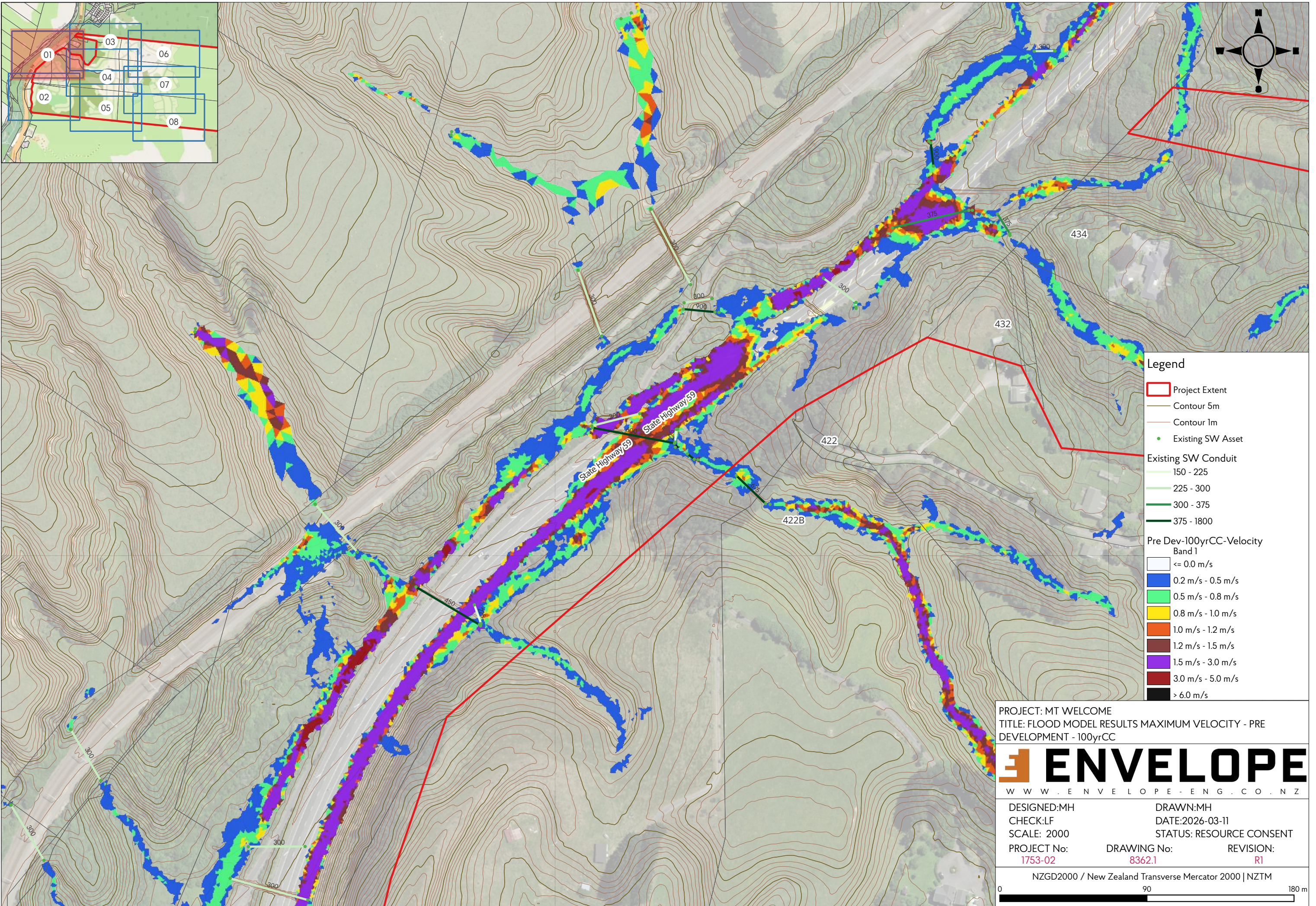
PROJECT: MT WELCOME
 TITLE: FLOOD MODEL RESULTS MAXIMUM DEPTH - PRE DEVELOPMENT - 100yrCC

ENVELOPE
 WWW.ENVELOPE-ENG.CO.NZ

DESIGNED:MH	DRAWN:MH
CHECK:LF	DATE:2026-03-11
SCALE: 2000	STATUS: RESOURCE CONSENT
PROJECT No: 1753-02	DRAWING No: 8361.8
	REVISION: R1

NZGD2000 / New Zealand Transverse Mercator 2000 | NZTM

0 90 180 m



- Legend**
- Project Extent
 - Contour 5m
 - Contour 1m
 - Existing SW Asset
- Existing SW Conduit**
- 150 - 225
 - 225 - 300
 - 300 - 375
 - 375 - 1800
- Pre Dev-100yrCC-Velocity Band 1**
- <= 0.0 m/s
 - 0.2 m/s - 0.5 m/s
 - 0.5 m/s - 0.8 m/s
 - 0.8 m/s - 1.0 m/s
 - 1.0 m/s - 1.2 m/s
 - 1.2 m/s - 1.5 m/s
 - 1.5 m/s - 3.0 m/s
 - 3.0 m/s - 5.0 m/s
 - > 6.0 m/s

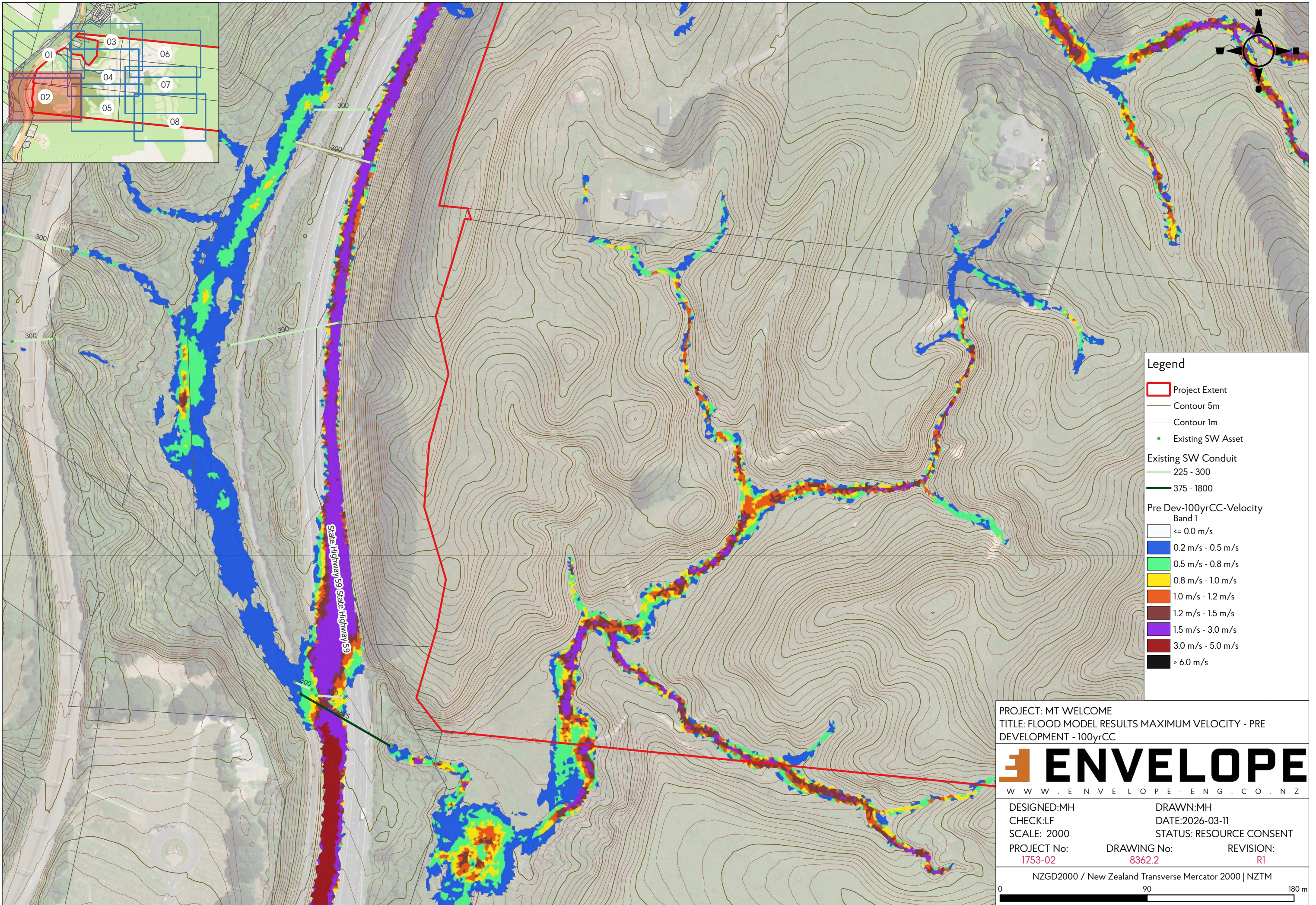
PROJECT: MT WELCOME
 TITLE: FLOOD MODEL RESULTS MAXIMUM VELOCITY - PRE DEVELOPMENT - 100yrCC

ENVELOPE
 WWW.ENVELOPE-ENG.CO.NZ

DESIGNED:MH	DRAWN:MH	
CHECK:LF	DATE:2026-03-11	
SCALE: 2000	STATUS: RESOURCE CONSENT	
PROJECT No: 1753-02	DRAWING No: 8362.1	REVISION: R1

NZGD2000 / New Zealand Transverse Mercator 2000 | NZTM

0 90 180 m



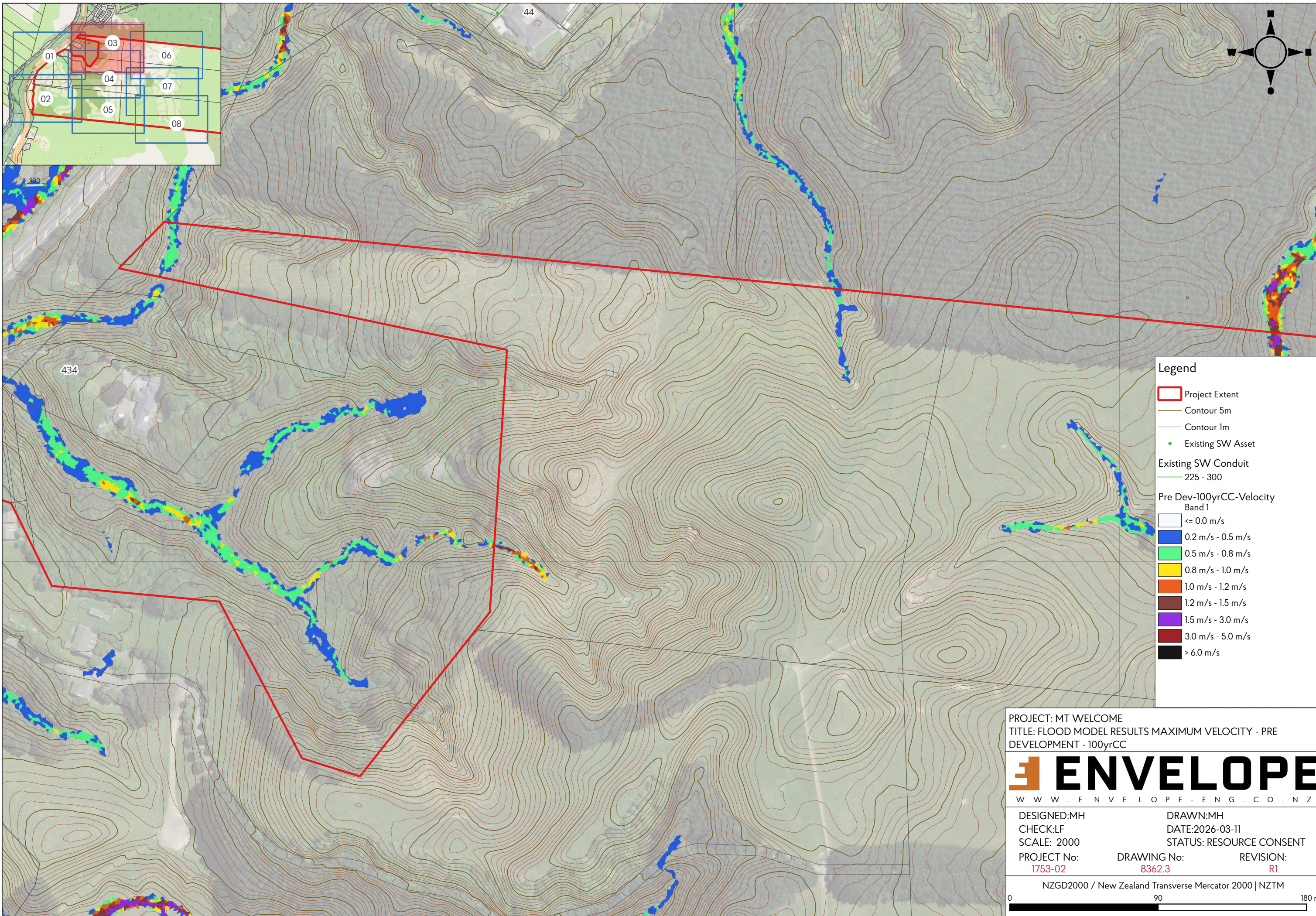
- Legend**
- Project Extent
 - Contour 5m
 - Contour 1m
 - Existing SW Asset
- Existing SW Conduit**
- 225 - 300
 - 375 - 1800
- Pre Dev-100yrCC-Velocity Band 1**
- <= 0.0 m/s
 - 0.2 m/s - 0.5 m/s
 - 0.5 m/s - 0.8 m/s
 - 0.8 m/s - 1.0 m/s
 - 1.0 m/s - 1.2 m/s
 - 1.2 m/s - 1.5 m/s
 - 1.5 m/s - 3.0 m/s
 - 3.0 m/s - 5.0 m/s
 - > 6.0 m/s

PROJECT: MT WELCOME
 TITLE: FLOOD MODEL RESULTS MAXIMUM VELOCITY - PRE DEVELOPMENT - 100yrCC



DESIGNED:MH	DRAWN:MH	
CHECK:LF	DATE:2026-03-11	
SCALE: 2000	STATUS: RESOURCE CONSENT	
PROJECT No: 1753-02	DRAWING No: 8362.2	REVISION: R1

NZGD2000 / New Zealand Transverse Mercator 2000 | NZTM
 0 90 180 m

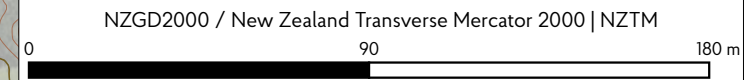


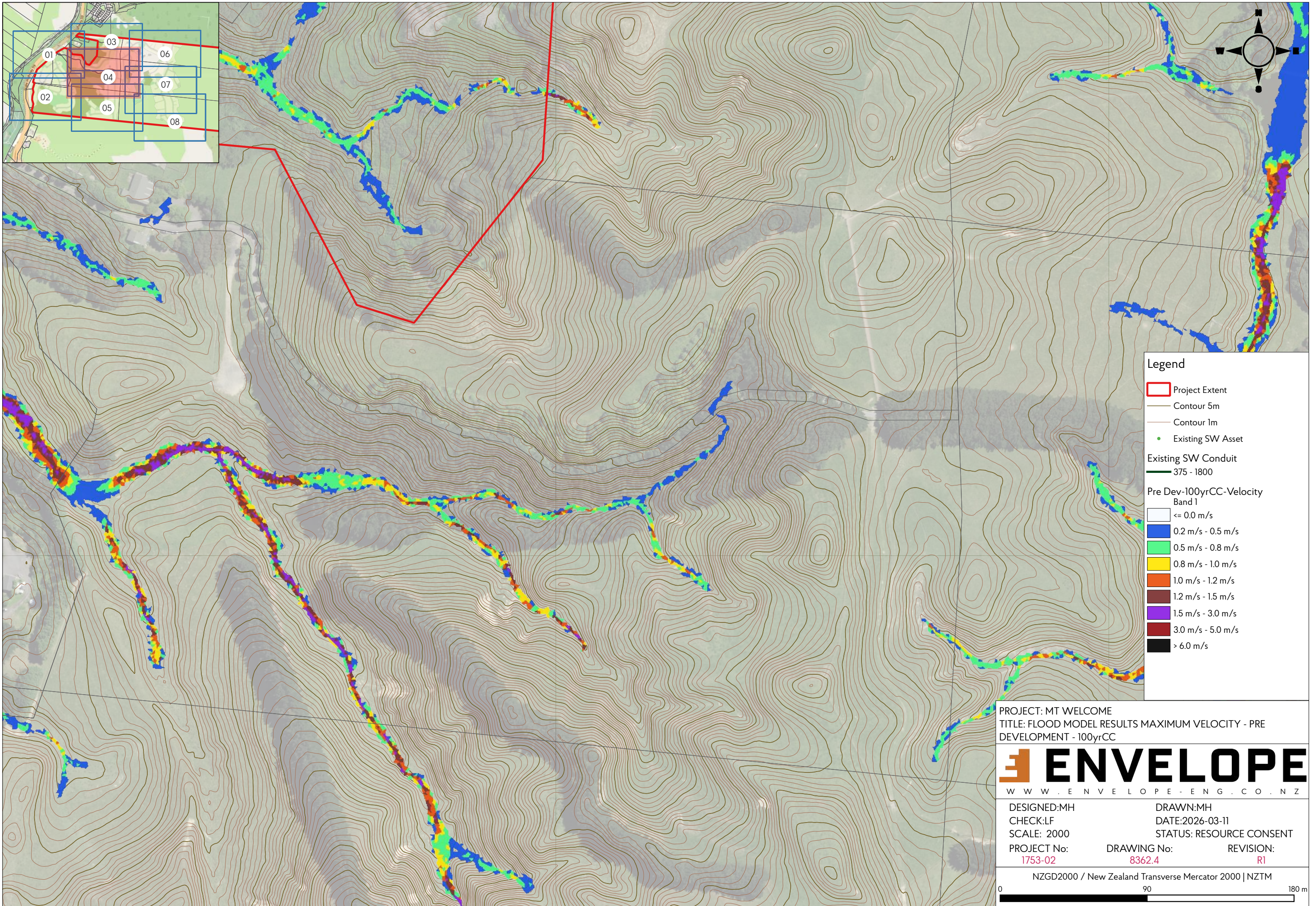
- Legend**
- Project Extent
 - Contour 5m
 - Contour 1m
 - Existing SW Asset
- Existing SW Conduit
225 - 300
- Pre Dev-100yrCC-Velocity Band 1
- <= 0.0 m/s
 - 0.2 m/s - 0.5 m/s
 - 0.5 m/s - 0.8 m/s
 - 0.8 m/s - 1.0 m/s
 - 1.0 m/s - 1.2 m/s
 - 1.2 m/s - 1.5 m/s
 - 1.5 m/s - 3.0 m/s
 - 3.0 m/s - 5.0 m/s
 - > 6.0 m/s

PROJECT: MT WELCOME
 TITLE: FLOOD MODEL RESULTS MAXIMUM VELOCITY - PRE DEVELOPMENT - 100yrCC



DESIGNED:MH	DRAWN:MH	
CHECK:LF	DATE:2026-03-11	
SCALE: 2000	STATUS: RESOURCE CONSENT	
PROJECT No: 1753-02	DRAWING No: 8362.3	REVISION: R1





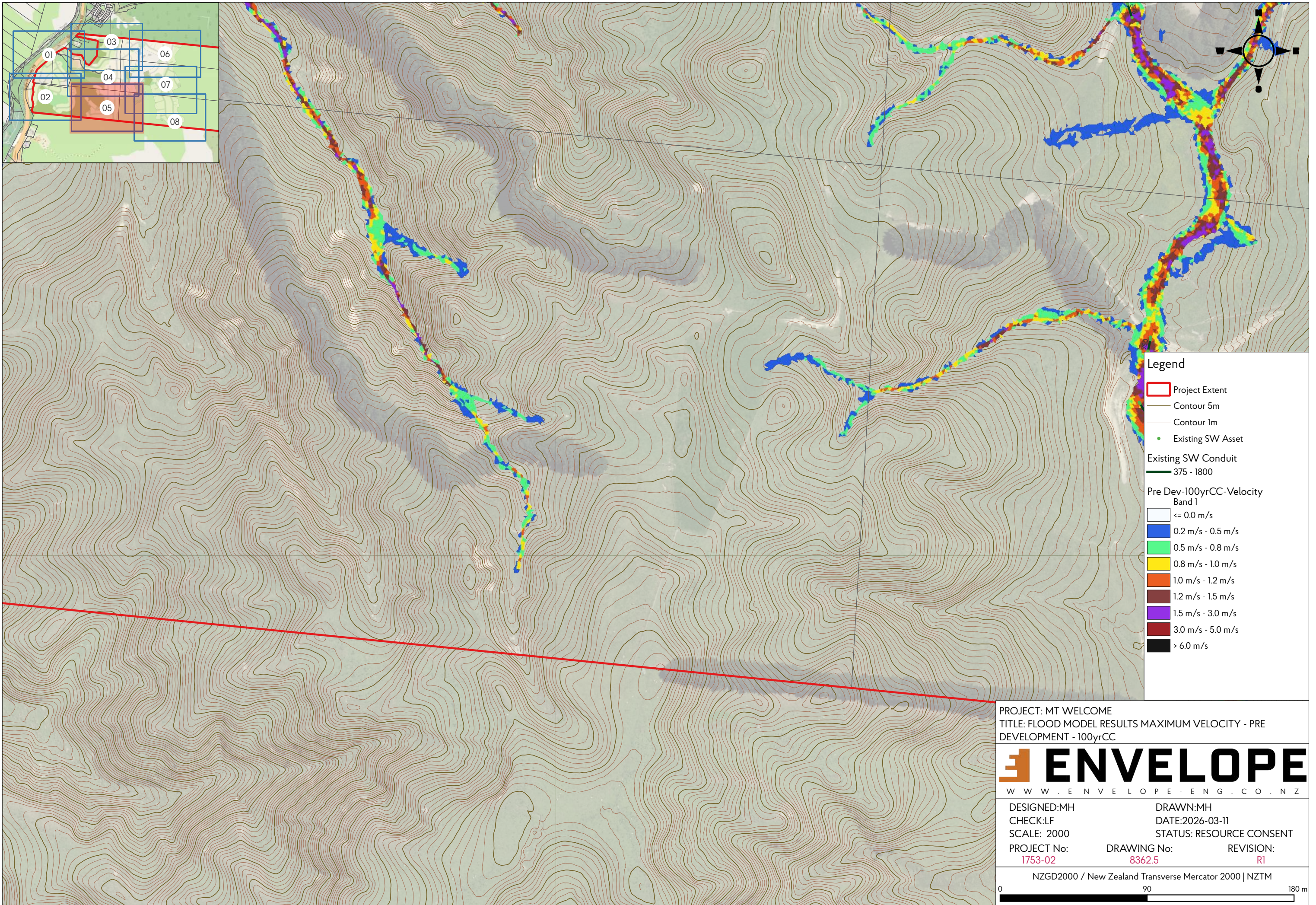
- Legend**
- Project Extent
 - Contour 5m
 - Contour 1m
 - Existing SW Asset
- Existing SW Conduit**
- 375 - 1800
- Pre Dev-100yrCC-Velocity Band 1**
- <= 0.0 m/s
 - 0.2 m/s - 0.5 m/s
 - 0.5 m/s - 0.8 m/s
 - 0.8 m/s - 1.0 m/s
 - 1.0 m/s - 1.2 m/s
 - 1.2 m/s - 1.5 m/s
 - 1.5 m/s - 3.0 m/s
 - 3.0 m/s - 5.0 m/s
 - > 6.0 m/s

PROJECT: MT WELCOME
 TITLE: FLOOD MODEL RESULTS MAXIMUM VELOCITY - PRE DEVELOPMENT - 100yrCC



DESIGNED:MH	DRAWN:MH
CHECK:LF	DATE:2026-03-11
SCALE: 2000	STATUS: RESOURCE CONSENT
PROJECT No: 1753-02	DRAWING No: 8362.4
	REVISION: R1

NZGD2000 / New Zealand Transverse Mercator 2000 | NZTM

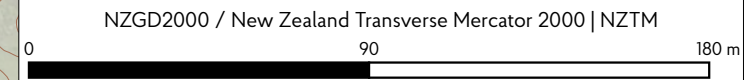


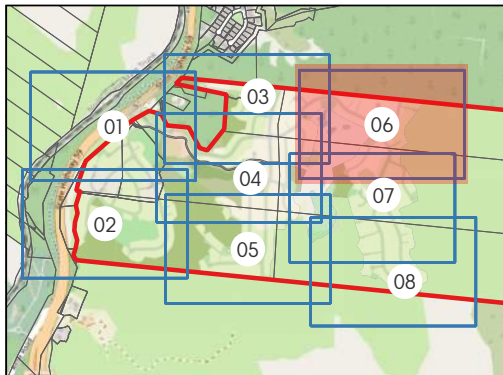
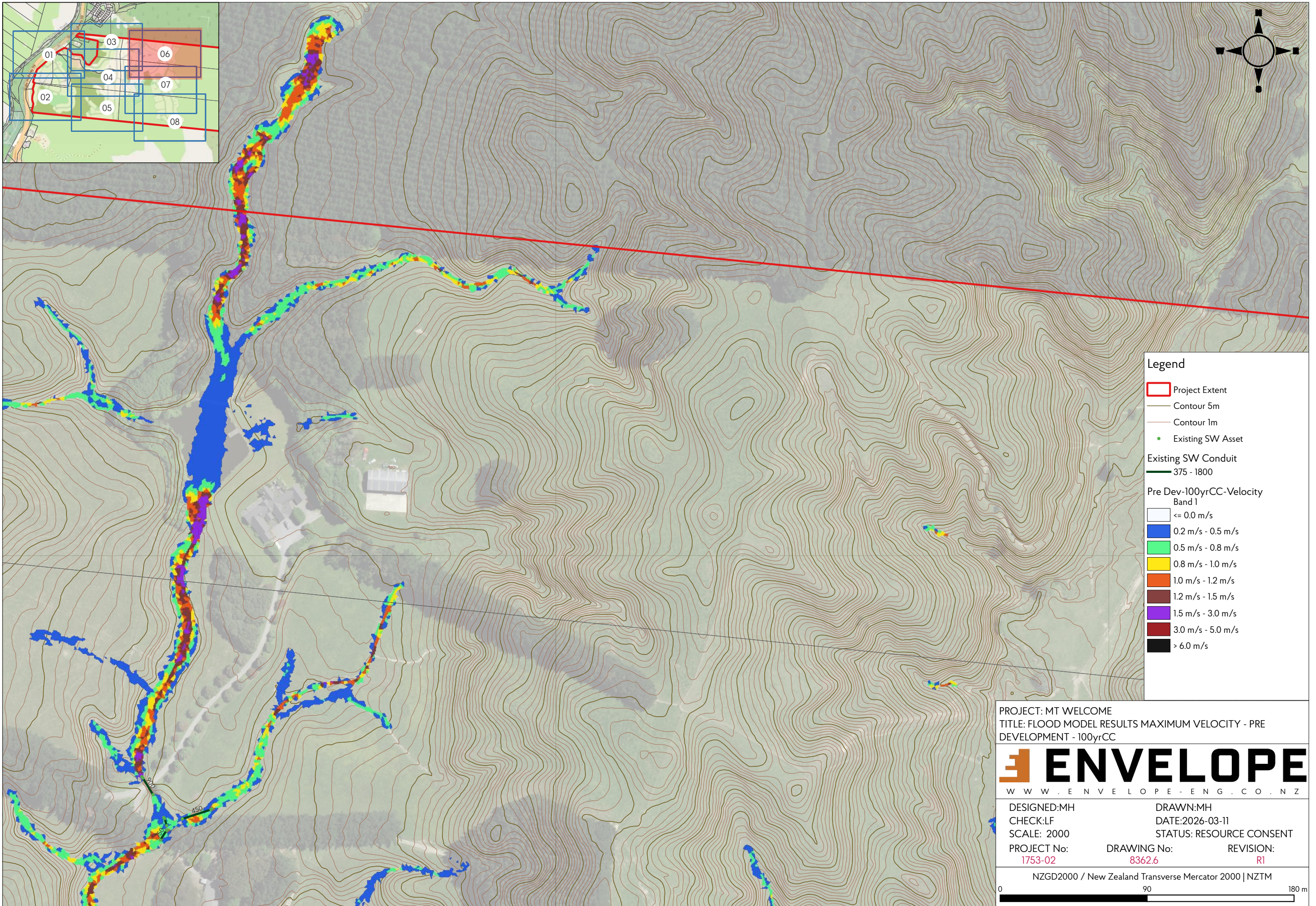
- Legend**
- Project Extent
 - Contour 5m
 - Contour 1m
 - Existing SW Asset
- Existing SW Conduit**
- 375 - 1800
- Pre Dev-100yrCC-Velocity Band 1**
- <= 0.0 m/s
 - 0.2 m/s - 0.5 m/s
 - 0.5 m/s - 0.8 m/s
 - 0.8 m/s - 1.0 m/s
 - 1.0 m/s - 1.2 m/s
 - 1.2 m/s - 1.5 m/s
 - 1.5 m/s - 3.0 m/s
 - 3.0 m/s - 5.0 m/s
 - > 6.0 m/s

PROJECT: MT WELCOME
 TITLE: FLOOD MODEL RESULTS MAXIMUM VELOCITY - PRE DEVELOPMENT - 100yrCC



DESIGNED:MH	DRAWN:MH	
CHECK:LF	DATE:2026-03-11	
SCALE: 2000	STATUS: RESOURCE CONSENT	
PROJECT No: 1753-02	DRAWING No: 8362.5	REVISION: R1





- Legend**
- Project Extent
 - Contour 5m
 - Contour 1m
 - Existing SW Asset
- Existing SW Conduit
 375 - 1800
- Pre Dev-100yrCC-Velocity Band 1
- <= 0.0 m/s
 - 0.2 m/s - 0.5 m/s
 - 0.5 m/s - 0.8 m/s
 - 0.8 m/s - 1.0 m/s
 - 1.0 m/s - 1.2 m/s
 - 1.2 m/s - 1.5 m/s
 - 1.5 m/s - 3.0 m/s
 - 3.0 m/s - 5.0 m/s
 - > 6.0 m/s

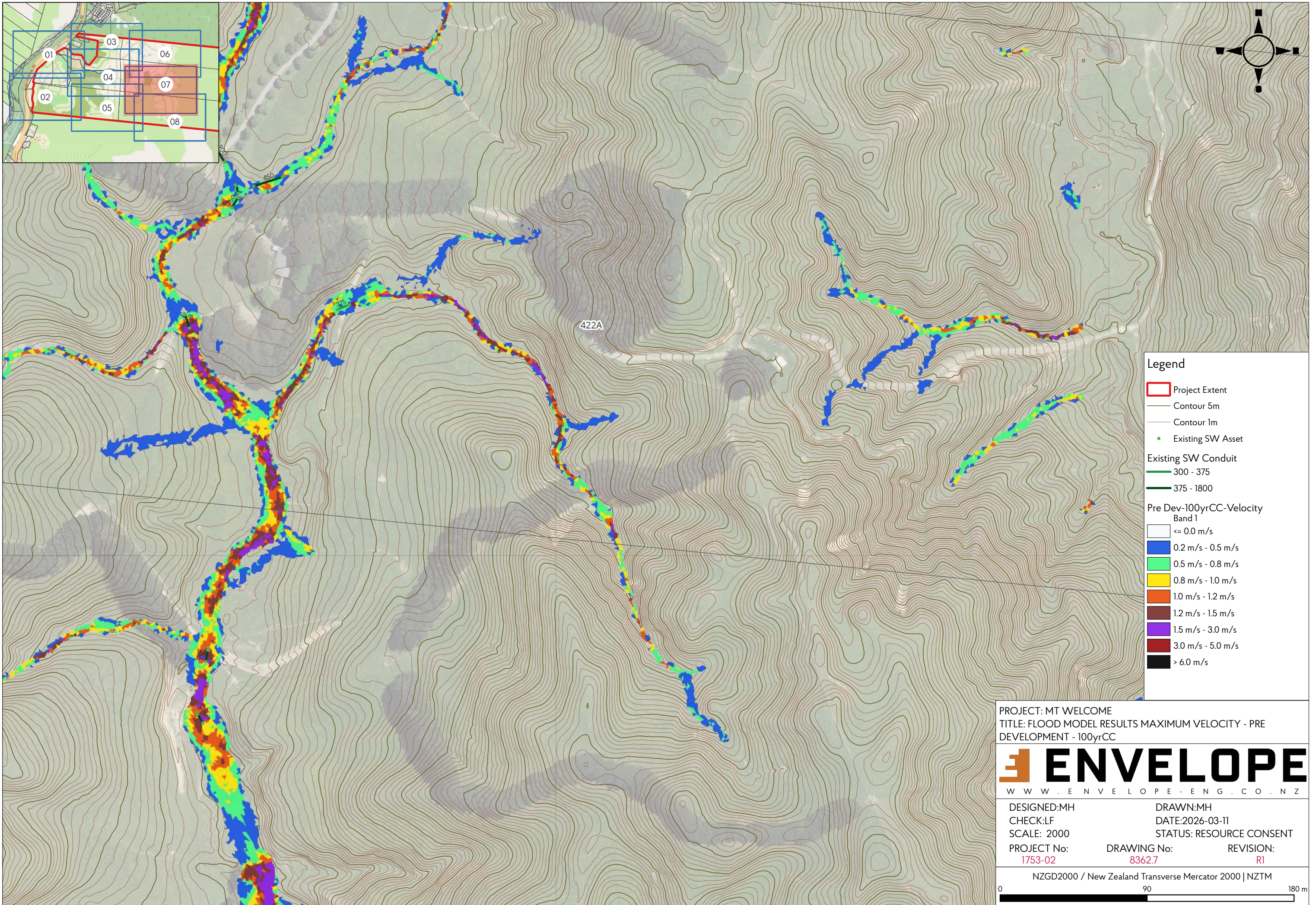
PROJECT: MT WELCOME
 TITLE: FLOOD MODEL RESULTS MAXIMUM VELOCITY - PRE DEVELOPMENT - 100yrCC

ENVELOPE
 WWW.ENVELOPE-ENG.CO.NZ

DESIGNED:MH	DRAWN:MH	
CHECK:LF	DATE:2026-03-11	
SCALE: 2000	STATUS: RESOURCE CONSENT	
PROJECT No: 1753-02	DRAWING No: 8362.6	REVISION: R1

NZGD2000 / New Zealand Transverse Mercator 2000 | NZTM

0 90 180 m



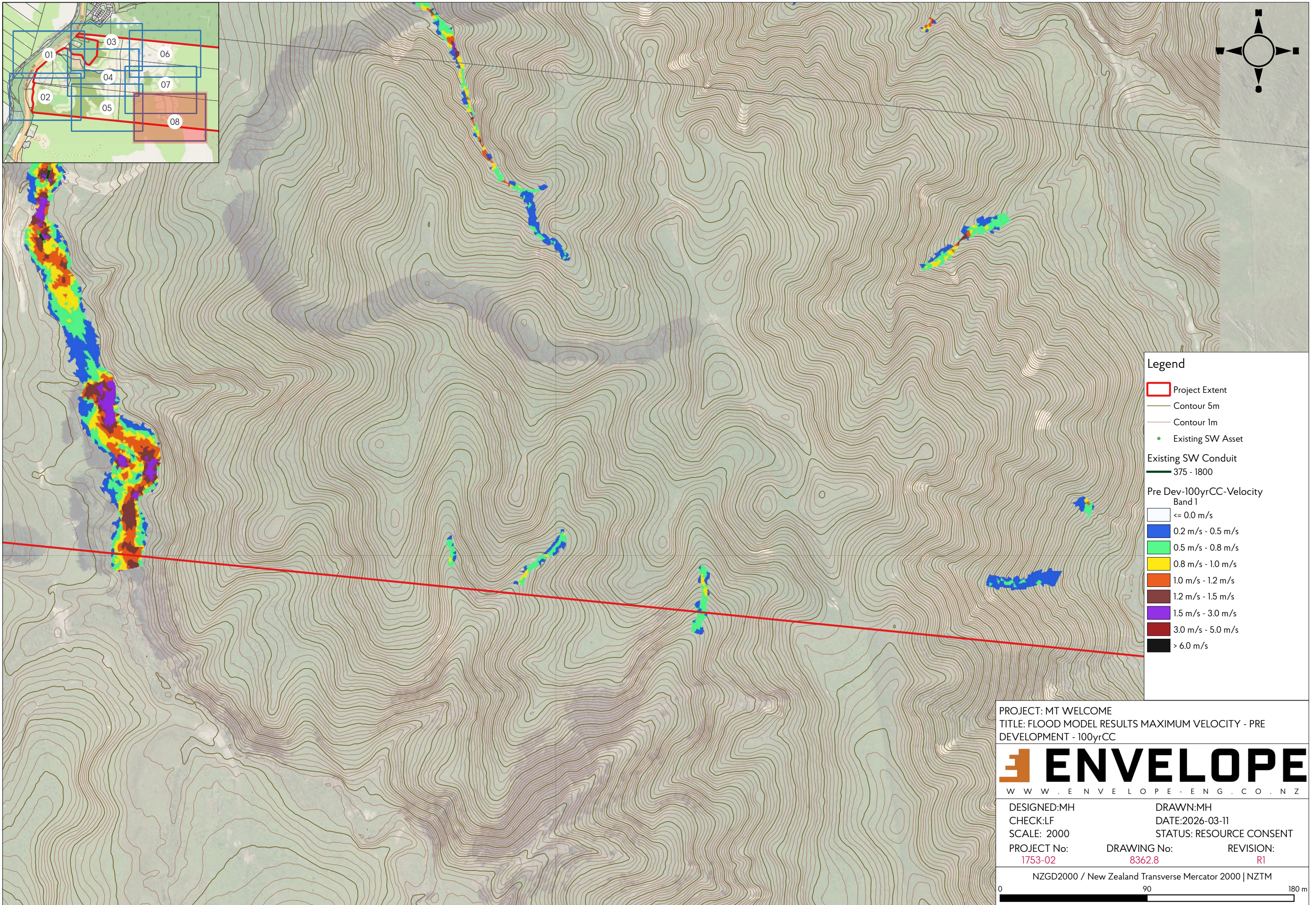
- Legend**
- Project Extent
 - Contour 5m
 - Contour 1m
 - Existing SW Asset
- Existing SW Conduit**
- 300 - 375
 - 375 - 1800
- Pre Dev-100yrCC-Velocity Band 1**
- <= 0.0 m/s
 - 0.2 m/s - 0.5 m/s
 - 0.5 m/s - 0.8 m/s
 - 0.8 m/s - 1.0 m/s
 - 1.0 m/s - 1.2 m/s
 - 1.2 m/s - 1.5 m/s
 - 1.5 m/s - 3.0 m/s
 - 3.0 m/s - 5.0 m/s
 - > 6.0 m/s

PROJECT: MT WELCOME
 TITLE: FLOOD MODEL RESULTS MAXIMUM VELOCITY - PRE DEVELOPMENT - 100yrCC



DESIGNED:MH	DRAWN:MH	
CHECK:LF	DATE:2026-03-11	
SCALE: 2000	STATUS: RESOURCE CONSENT	
PROJECT No: 1753-02	DRAWING No: 8362.7	REVISION: R1

NZGD2000 / New Zealand Transverse Mercator 2000 | NZTM
 0 90 180 m



- Legend**
- Project Extent
 - Contour 5m
 - Contour 1m
 - Existing SW Asset
- Existing SW Conduit**
- 375 - 1800
- Pre Dev-100yrCC-Velocity Band 1**
- <= 0.0 m/s
 - 0.2 m/s - 0.5 m/s
 - 0.5 m/s - 0.8 m/s
 - 0.8 m/s - 1.0 m/s
 - 1.0 m/s - 1.2 m/s
 - 1.2 m/s - 1.5 m/s
 - 1.5 m/s - 3.0 m/s
 - 3.0 m/s - 5.0 m/s
 - > 6.0 m/s

PROJECT: MT WELCOME
 TITLE: FLOOD MODEL RESULTS MAXIMUM VELOCITY - PRE DEVELOPMENT - 100yrCC



DESIGNED:MH	DRAWN:MH
CHECK:LF	DATE:2026-03-11
SCALE: 2000	STATUS: RESOURCE CONSENT
PROJECT No: 1753-02	DRAWING No: 8362.8
	REVISION: R1

