

0 100 200 300 400 500 m



Legend

- Wetlands Retained
- Wetlands buffer
- Existing Watercourse
- Groundwater Mean Level
- Contours (1.0 m)
- Intermediate contours (0.5 m)

Notes:  
 1. Groundwater data are based on CGW piezometer records and investigations (May 2025 – Mar 2026).  
 2. Finished levels in NZVD 2016; contours indicative and subject to detailed design.

Overall Groundwater Plan

Waikanae North Developments Ltd

Waikanae North  
 Peka Peka, Kapiti Coast

© Landlink Limited 2025



1 Ngaio Road, Waikanae 5036 + contactus@Landlink.nz

STAGE	ALL
REVISION	C
REVISION DETAILS	Issued For Consent

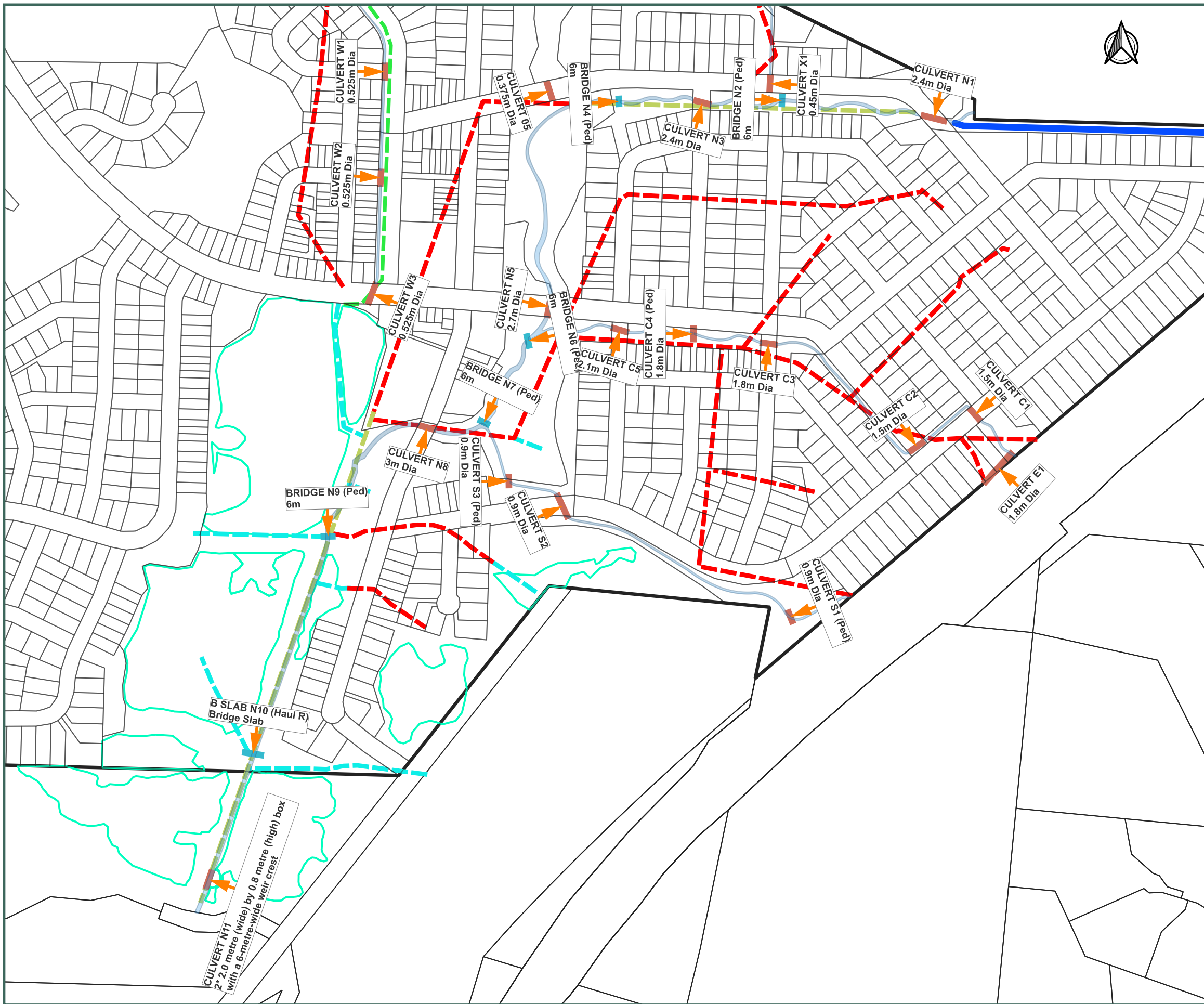
DESIGNED BY	JJH
DRAWN BY	JJH
APPROVED BY	PT

DATE 2026-03-13

SCALE Refer Scale Bar

2911-ALL-EW-204

This drawing contains data from other sources and has been prepared for a specific site and event. Landlink Limited does not accept any liability for its accuracy, content or unauthorised use.



0 70 140 210 280 350 m



Legend

- Wetlands Retained
- Existing Watercourse Category
- Modify
- Remove
- Subsoil
- Retain
- Proposed Ngarara Stream
- Proposed Overflow Drain
- Bridge
- Culvert

- Notes:
1. In-stream works shall follow approved methodologies, including temporary diversions, flumes, or over-pumping, to maintain flow continuity and isolate work areas during construction.
  2. Culverts are shown diagrammatically only. Detailed design will be undertaken at the engineering design stage in accordance with the New Zealand National Fish Passage Guidelines (NIWA, 2018) and to achieve the intent of NES-Freshwater Clause 70.
  3. Stream realignments shall follow the intent of the Ecological Restoration and Management Plans and be implemented under the supervision of suitably qualified ecologists and engineers.
  4. Newly constructed channels shall be stabilised prior to connection to the existing stream network, with flows maintained within the newly constructed alignment during works.

Overall Realignment and Crossings Plan

Culverts and Pedestrian Bridges

Waikanae North Developments Ltd

Waikanae North

Peka Peka, Kapiti Coast

© Landlink Limited 2025



1 Ngaio Road, Waikanae 5036 + contactus@Landlink.nz

STAGE	ALL
REVISION	C
REVISION DETAILS	Issued For Consent

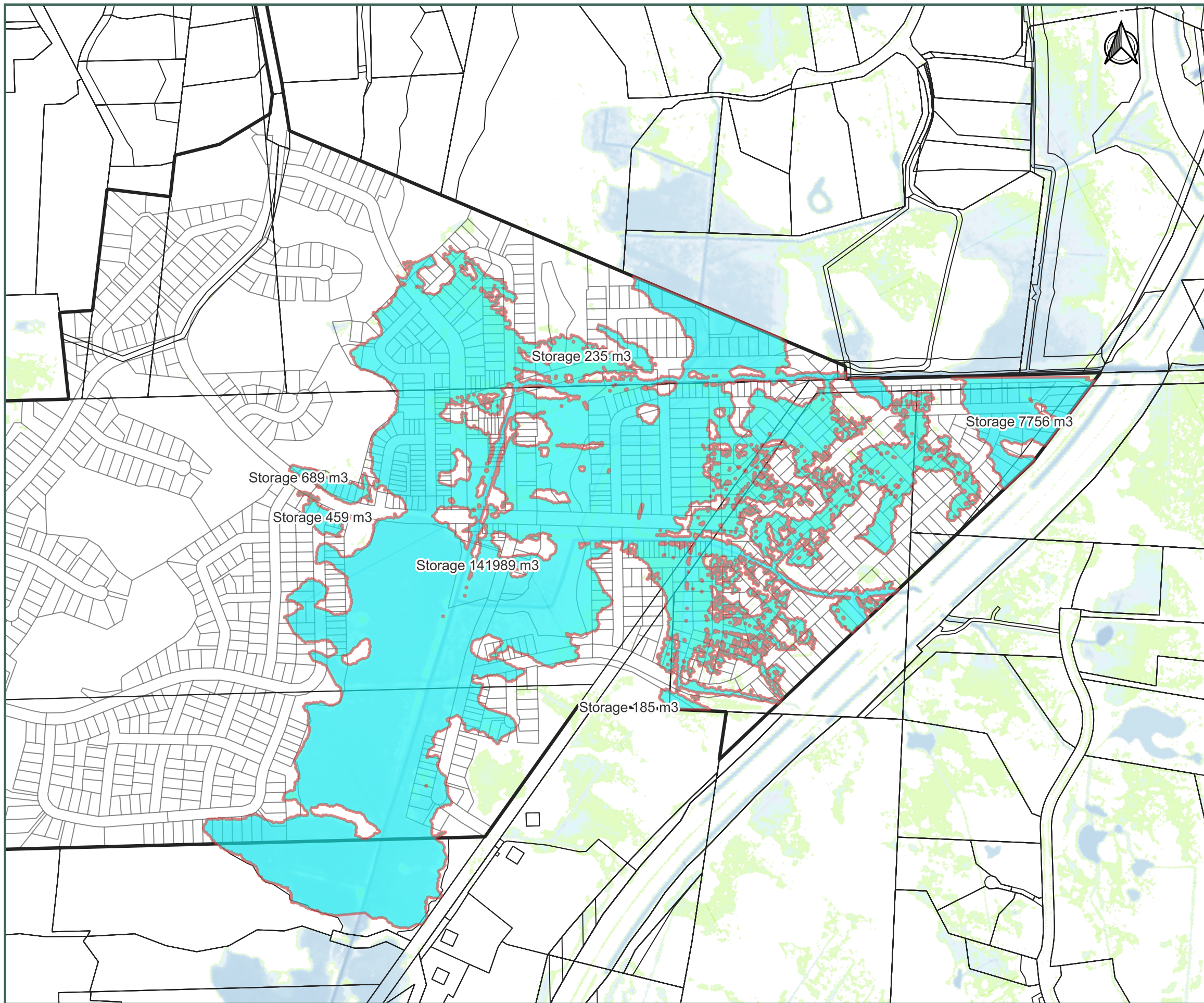
DESIGNED BY	JJH
DRAWN BY	JJH
APPROVED BY	PT

This drawing contains data from other sources and has been prepared for a specific site and event. Landlink Limited does not accept any liability for its accuracy, content or unauthorised use.

DATE 2026-03-13

SCALE Refer Scale Bar

2911-ALL-EW-205



0 100 200 300 400 500 m

Legend

1% AEP 2030 Scenario Ex Storage

Notes:

1. Earthworks boundaries and staging are indicative; sequencing to follow the certified CEMP and the adaptive-management framework.
2. Flood-storage areas are configured to achieve the outcomes assessed in the supporting hydrology and flood-modelling reports, subject to detailed design and certification.
3. Finished levels in NZVD 2016; contours indicative and subject to detailed design.
4. Peat and groundwater data are based on CGW piezometer records and investigations (May–Mar 2022).
5. Cut and fill volumes are approximate and subject to construction survey.

Flood Storage Plan – Overall

Waikanae North Developments Ltd

Waikanae North

Peka Peka, Kapiti Coast

© Landlink Limited 2025



1 Ngaio Road, Waikanae 5036 + contactus@Landlink.nz

STAGE	ALL
REVISION	C
REVISION DETAILS	Issued For Consent

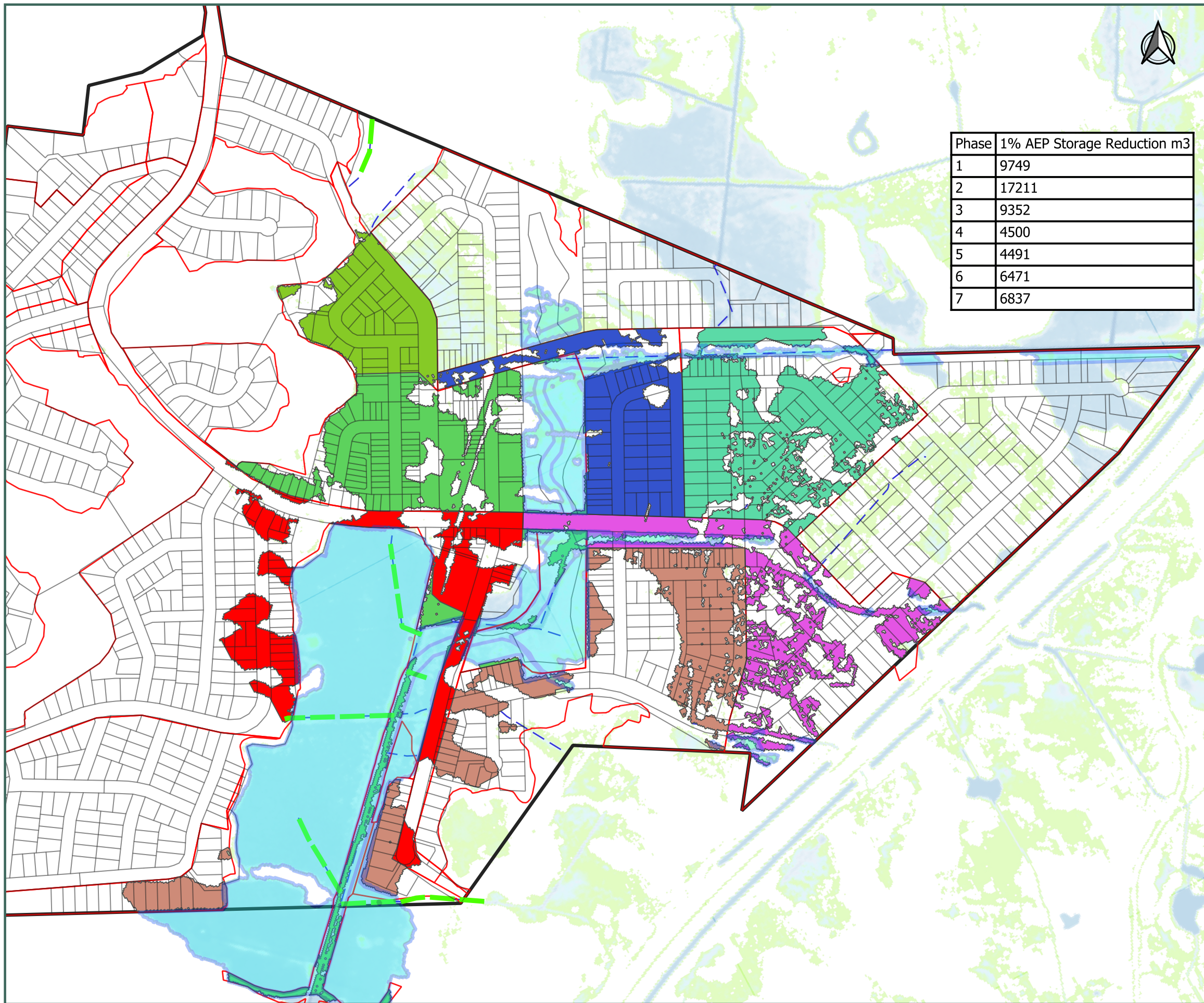
DESIGNED BY	JJH
DRAWN BY	JJH
APPROVED BY	PT

This drawing contains data from other sources and has been prepared for a specific site and event. Landlink Limited does not accept any liability for its accuracy, content or unauthorised use.

DATE 2026-03-13

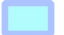
SCALE Refer Scale Bar

2911-ALL-EW-206




0 80 160 240 320 400 m

Legend

 Existing flood storage area retained

Flood storage reduction by EW Phase

-  1
-  2
-  3
-  4
-  5
-  6
-  7
-  EW STAGING

Notes:

1. Flood-storage reduction has been assessed using the current 1 % AEP design event (no 2030 climate-change scenario).
2. Earthworks boundaries and staging are indicative; sequencing to follow the certified CEMP and the adaptive-management framework.
3. Finished levels in NZVD 2016; contours indicative and subject to detailed design.
4. Peat and groundwater data are based on CGW piezometer records and investigations (May–Mar 2022).
5. Cut and fill volumes are approximate and subject to construction survey.

Flood Storage Reduction Plan

By Earthworks Phase

Waikanae North Developments Ltd

Waikanae North

Peka Peka, Kapiti Coast

© Landlink Limited 2025



1 Ngaio Road, Waikanae 5036 + contactus@Landlink.nz

STAGE	ALL
REVISION	C
REVISION DETAILS	Issued For Consent

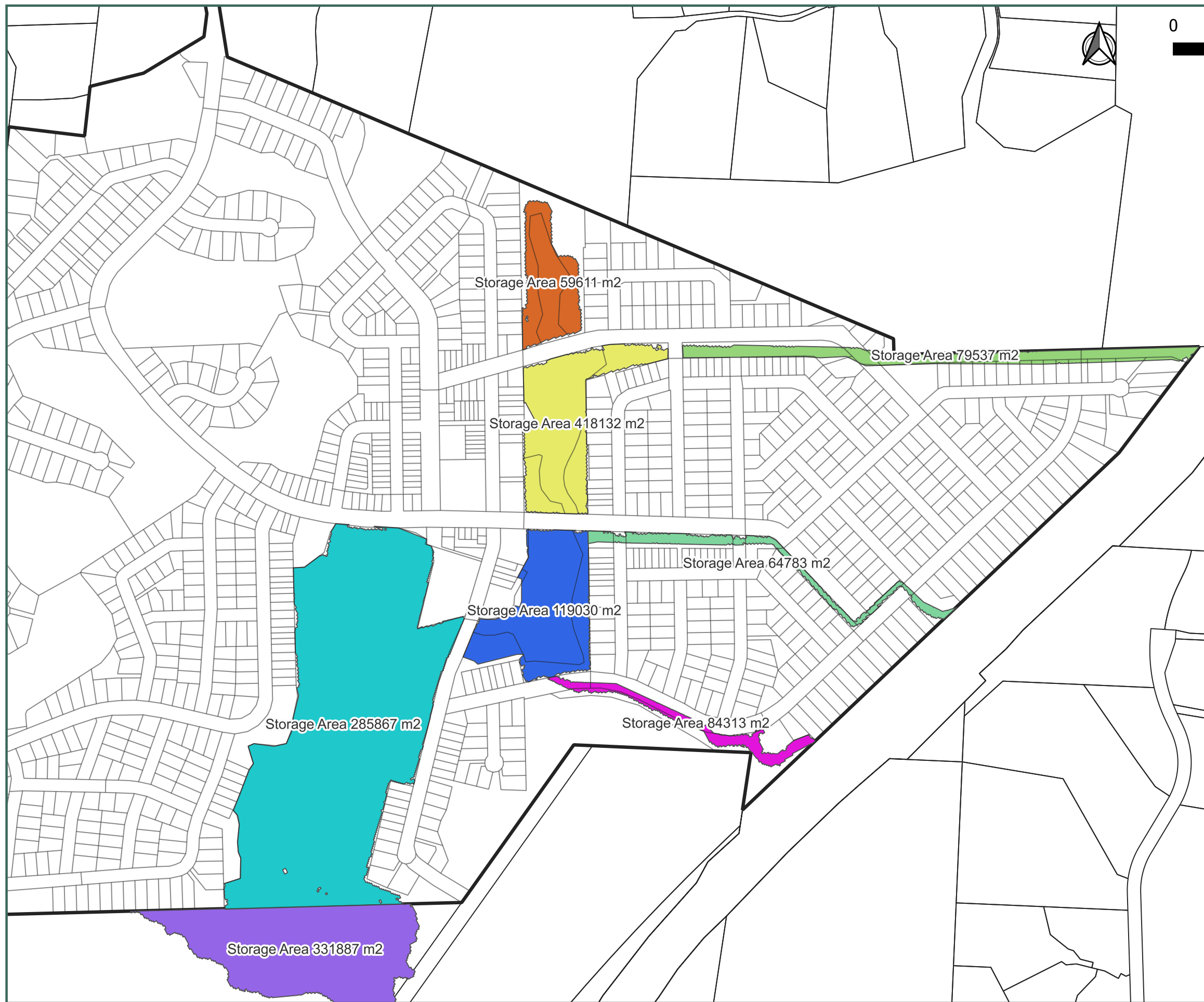
DESIGNED BY	JJH
DRAWN BY	JJH
APPROVED BY	PT

This drawing contains data from other sources and has been prepared for a specific site and event. Landlink Limited does not accept any liability for its accuracy, content or unauthorised use.

DATE 2026-03-13

SCALE Refer Scale Bar

2911-ALL-EW-207



Legend

Flood storage Area Proposed (Volume from 1% AEP 2130 event)

- 1
- 2
- 3
- 4
- 5
- 6
- 7
- 8

Notes:

1. Earthworks boundaries and staging shown are indicative. Final construction sequencing shall follow the certified CEMP and ESCP.
2. Flood-storage areas are configured to achieve the outcomes assessed in the supporting hydrology and flood-modelling reports, subject to detailed design and certification.
3. Finished levels in NZVD 2016; contours indicative and subject to detailed design.
4. Peat and groundwater data are based on CGW piezometer records and investigations (May-Mar 2022).
5. Cut and fill volumes are approximate and subject to construction survey.

Overall Flood Storage Provided

Waikanae North Developments Ltd

Waikanae North

Peka Peka, Kapiti Coast

© Landlink Limited 2025



1 Ngaio Road, Waikanae 5036 + contactus@Landlink.nz

STAGE	ALL
REVISION	C
REVISION DETAILS	Issued For Consent

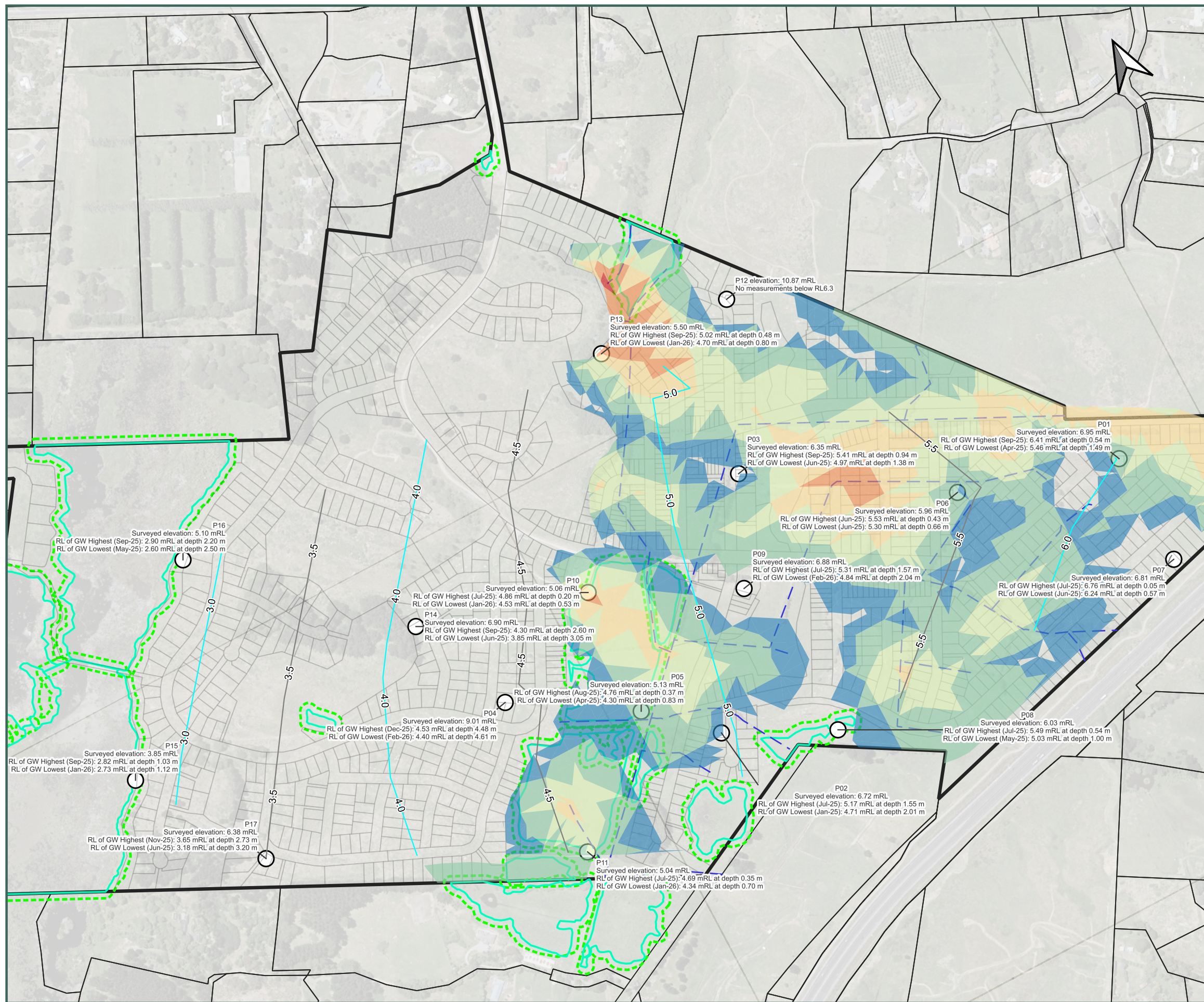
DESIGNED BY	JJH
DRAWN BY	JJH
APPROVED BY	PT

This drawing contains data from other sources and has been prepared for a specific site and event. Landlink Limited does not accept any liability for its accuracy, content or unauthorised use.

DATE 2026-03-13

SCALE Refer Scale Bar

2911-ALL-EW-208



0 100 200 300 400 500 m

Legend

- Wetlands Retained
- Wetlands buffer
- Existing Watercourse
- Groundwater Mean Level
- Contours (1.0 m)
- Intermediate contours (0.5 m)
- Estimated Peat Thickness (m)
- 0.2 - 0.5
- 0.5 - 1
- 1 - 1.5
- 1.5 - 2
- 2 - 2.5
- 2.5 - 3

Notes:

1. Groundwater data are based on CGW piezometer records and investigations (May 2025 – Mar 2026).
2. Peat depths shown are based on CPT investigations. Peat surfaces have been approximated by interpolation between observed peat depths and are indicative only.
3. Finished levels in NZVD 2016; contours indicative and subject to detailed design.

Overall Groundwater Plan and Peat

Waikanae North Developments Ltd

Waikanae North  
Peka Peka, Kapiti Coast

© Landlink Limited 2025



1 Ngaio Road, Waikanae 5036 + contactus@Landlink.nz

STAGE	ALL
REVISION	C
REVISION DETAILS	Issued For Consent

DESIGNED BY	JJH
DRAWN BY	JJH
APPROVED BY	PT

This drawing contains data from other sources and has been prepared for a specific site and event. Landlink Limited does not accept any liability for its accuracy, content or unauthorised use.

DATE 2026-03-13

SCALE Refer Scale Bar

2911-ALL-EW-209