

- NOTES
1. ALL WORKS TO BE IN ACCORDANCE WITH AUCKLAND COUNCIL STANDARDS.
 2. COORDINATES IN TERMS OF NZ GEODETIC DATUM MT EDEN 2000. LEVELS IN TERMS OF THE AUCKLAND VERTICAL DATUM 2016.
 3. PLEASE REFER TO MAVEN ASSOCIATES FLOOD MODELING REPORT REV G FOR FLOOD MODELLING OF CATCHMENTS
 4. CATCHMENT AREAS SHOWN DO NOT INCLUDE SWALE AND POND AREAS

LEGEND

- EX BDY
- PR BDY
- CATCHMENT BDY
- CATCHMENT NUMBER
- C-39
- SW POND 1 CATCHMENT
- SW POND 2 CATCHMENT
- SW POND 3 CATCHMENT
- SW POND 4 CATCHMENT
- DIRECTLY TO AWAKERI WETLAND

A	RESOURCE CONSENT	YW	02/2025
Rev	Description	By	Date
	By	Date	
Survey	SURVEYWORX	02/2021	
Design	YW	11/2024	
Drawn	SP	11/2024	
Checked	LC	02/2025	

M Maven Associates
09 571 0050
info@maven.co.nz
www.maven.co.nz
5 Owens Road, Epsom
Auckland 1023

Project
**SUNFIELD DEVELOPMENT
ARDMORE, AUCKLAND
MASTERPLANNING
FOR SUNFIELD
DEVELOPMENTS LIMITED**

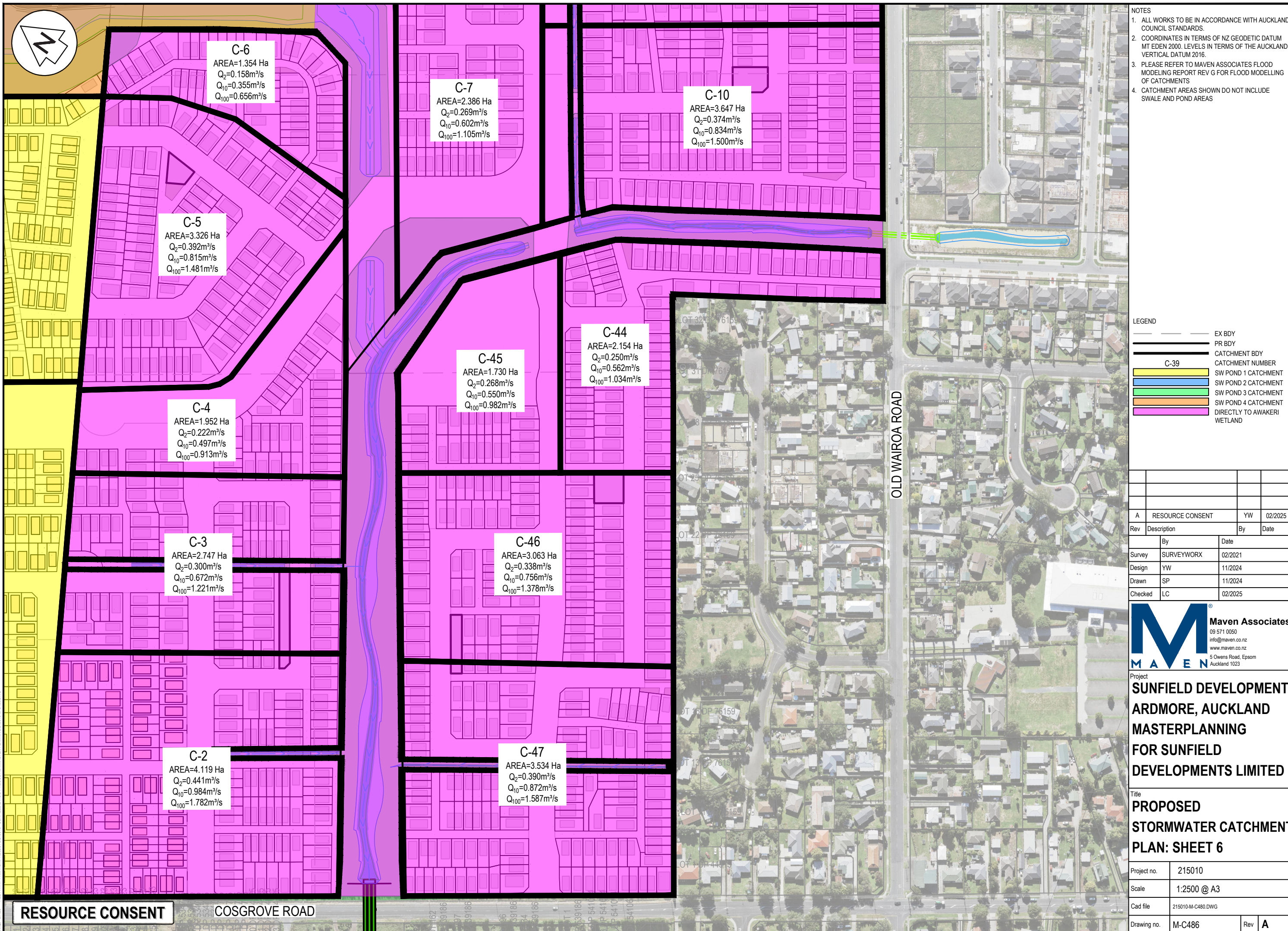
Title
**PROPOSED
STORMWATER CATCHMENT
PLAN: SHEET 5**

Project no.	215010
Scale	1:2500 @ A3
Cad file	215010-M-C480.DWG
Drawing no.	M-C485
Rev	A

DATE: 27/02 FILE PATH: F:\MAVEN\PROJECTS\215010 - SUNFIELD\DWG\3-PRODUCTION\MASTER PLAN\215010-M-C480.DWG

RESOURCE CONSENT

COSGROVE ROAD



DATE: 2/7/25 FILE PATH: F:\MAVEN\PROJECTS\25010 - SUNFIELD\DWG\3-PRODUCTION\MASTER PLAN\N215010-M-C480.DWG

- NOTES
1. ALL WORKS TO BE IN ACCORDANCE WITH AUCKLAND COUNCIL STANDARDS.
 2. COORDINATES IN TERMS OF NZ GEODETIC DATUM MT EDEN 2000. LEVELS IN TERMS OF THE AUCKLAND VERTICAL DATUM 2016.
 3. PLEASE REFER TO MAVEN ASSOCIATES FLOOD MODELING REPORT REV G FOR FLOOD MODELLING OF CATCHMENTS
 4. CATCHMENT AREAS SHOWN DO NOT INCLUDE SWALE AND POND AREAS

LEGEND

- EX BDY
- PR BDY
- CATCHMENT BDY
- CATCHMENT NUMBER
- SW POND 1 CATCHMENT
- SW POND 2 CATCHMENT
- SW POND 3 CATCHMENT
- SW POND 4 CATCHMENT
- DIRECTLY TO AWAKERI WETLAND

A	RESOURCE CONSENT	YW	02/2025
Rev	Description	By	Date
		By	Date
Survey	SURVEYWORX		02/2021
Design	YW		11/2024
Drawn	SP		11/2024
Checked	LC		02/2025

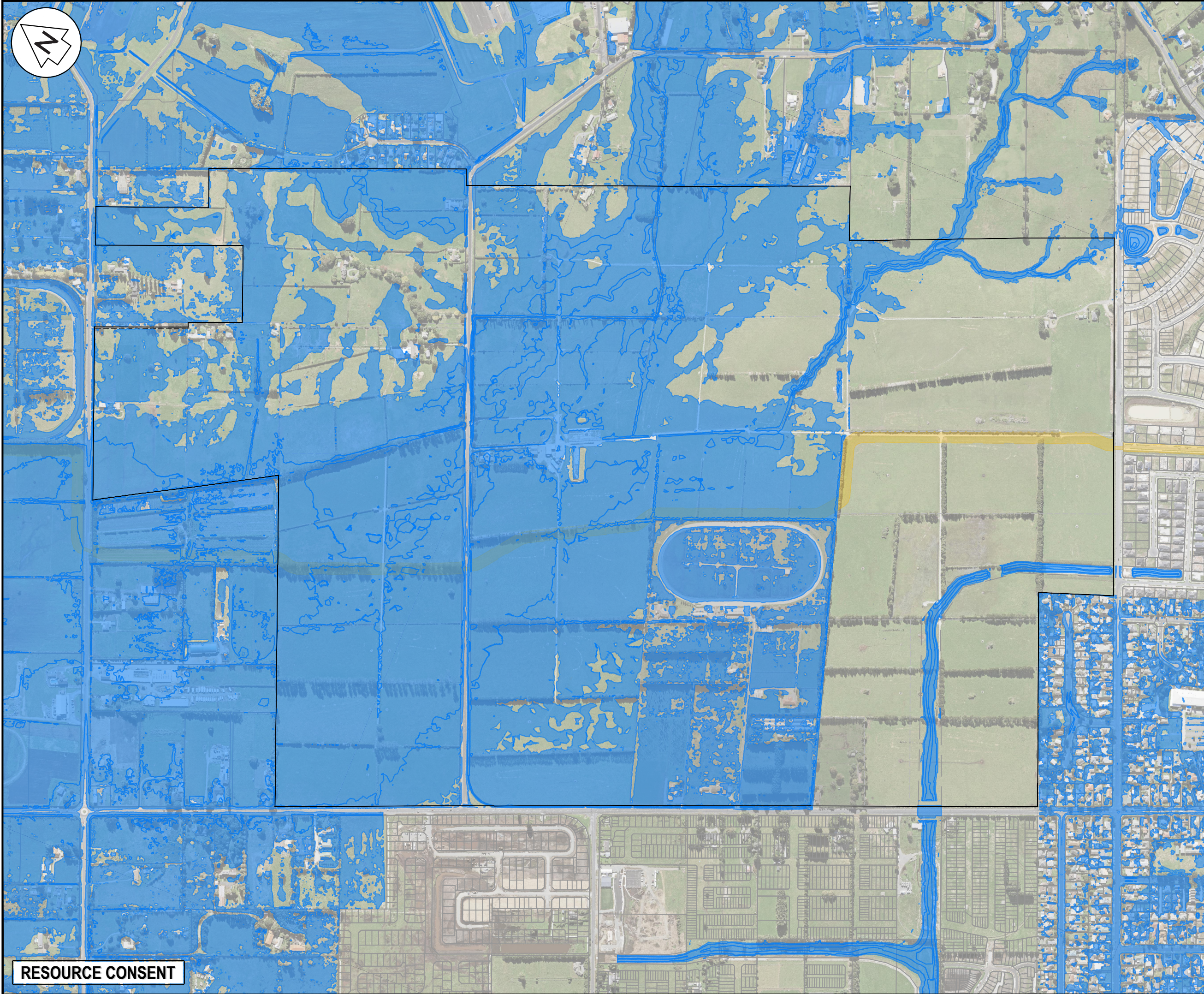
M Maven Associates
09 571 0050
info@maven.co.nz
www.maven.co.nz
5 Owens Road, Epsom
Auckland 1023

Project
**SUNFIELD DEVELOPMENT
ARDMORE, AUCKLAND
MASTERPLANNING
FOR SUNFIELD
DEVELOPMENTS LIMITED**

Title
**PROPOSED
STORMWATER CATCHMENT
PLAN: SHEET 6**

Project no.	215010
Scale	1:2500 @ A3
Cad file	215010-M-C480.DWG
Drawing no.	M-C486
Rev	A

RESOURCE CONSENT COSGROVE ROAD



- NOTES
1. ALL WORKS TO BE IN ACCORDANCE WITH AUCKLAND COUNCIL STANDARDS.
 2. COORDINATES IN TERMS OF NZ GEODETIC DATUM MT EDEN 2000. LEVELS IN TERMS OF THE AUCKLAND VERTICAL DATUM 2016.
 3. IT IS THE CONTRACTORS RESPONSIBILITY TO LOCATE ALL SERVICES THAT MAY BE AFFECTED BY THEIR OPERATIONS.
 4. PIPE BEDDING: 0 - 10% GRANULAR BEDDING, 10 - 20% WEAK CONCRETE BEDDING. GREATER THAN 20% WEAK CONCRETE BEDDING (7MPA PLUS ANTI SCOUR BLOCKS AT 6m CRS).
 5. EACH CONNECTION SHALL BE MARKED BY A 50mmX50mm TREATED PINE STAKE EXTENDING 600mm ABOVE GROUND LEVEL WITH THE TOP PAINTED. THIS MARKER POST SHALL BE PLACED ALONGSIDE A TIMBER MARKER INSTALLED AT THE TIME OF PIPELAYING AND EXTENDING FROM THE CONNECTION TO 150mm BELOW FINISHED GROUND LEVEL. CONNECTIONS SHALL BE ACCURATELY INDICATED ON "AS BUILT" PLANS.
 6. APPROVED HARDFILL IS TO BE USED IN BACKFILLING OF ALL ROAD CROSSINGS AND VEHICLE CROSSINGS TO COUNCIL STANDARDS.
 7. HEAVY DUTY MANHOLE LIDS AND FRAMES TO BE USED IN TRAFFICKED AREAS.
 8. ALL MANHOLES ARE TO BE 1050mmØ PRECAST CONCRETE UNLESS SHOWN OTHERWISE.
 9. ALL CATCHPIT LEADS SHALL HAVE MIN COVER 1.0m.
 10. ALL LINES TO BE ABANDONED SHALL BE SEALED AT EACH END. TIMING OF ALL SEALING TO BE COORDINATED WITH COUNCIL STAFF.
 11. ALL LOT CONNECTION TO BE MIN 100mm uPVC SN16 UNLESS SHOWN OTHERWISE.

LEGEND

---	EX BDY
---	SITE BDY
---	1% AEP FLOOD PLAIN
---	EX FIRST GAS EASEMENT

A	RESOURCE CONSENT	OQ	02/2025
Rev	Description	By	Date
		By	Date
Survey	SURVEYWORX		02/2021
Design	YW		11/2024
Drawn	OQ		11/2024
Checked	JP/LC		02/2025



Maven Associates
09 571 0050
info@maven.co.nz
www.maven.co.nz
5 Owens Road, Epsom
Auckland 1023

Project
**SUNFIELD DEVELOPMENT
ARDMORE, AUCKLAND
MASTERPLANNING
FOR SUNFIELD
DEVELOPMENTS LIMITED**

Title
**STORMWATER PRE-
DEVELOPEMENT FLOOD
PLAN**

Project no.	215010		
Scale	1:7500 @ A3		
Cad file	215010-M-C490.DWG		
Drawing no.	M-C490	Rev	A

RESOURCE CONSENT