

SOUTHLAND WIND FARM

Fast-track Approvals Substantive Application

Part G - Project Figures - Management Plans

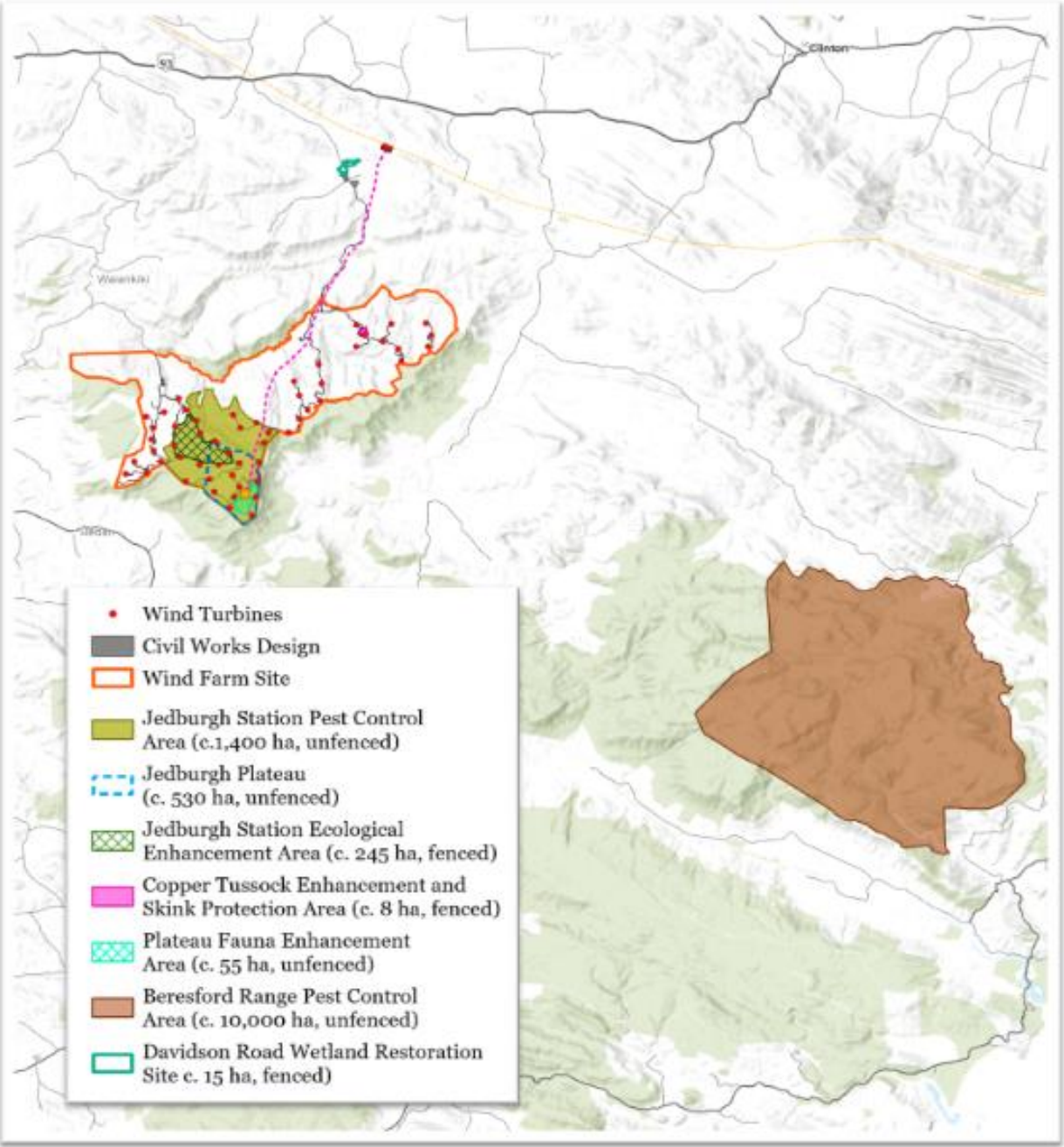


FIGURE		
Figure Name	Figure Description	Page No
FIGURE - CONSTRUCTION EMP - 2	Water take locations and corresponding stream catchments	1
FIGURE LOCAL RESIDENTS - 1	Defined local residents area for the purposes of the project	2
FIGURE - AMP - 01a	Avifauna survey locations - Wind Farm Site - West	3
FIGURE - AMP - 01b	Avifauna survey locations - Wind Farm Site - East	4
FIGURE - AMP - 02	Location of proposed Bird Flight Diverters Along the Transmission Line Route	5
FIGURE - BAT MP - 01	Areas requiring tree identification and assessment for bat roosts prior to tree being removed or limbed	6
FIGURE - HREP - 01	Overview of the Ecological Enhancement and Restoration Areas on the Wind Farm Project Site	7
FIGURE - HREP - 02	Ecological Enhancement and Restoration Areas on Jedburgh Station	8
FIGURE - HREP - 03	Copper Tussock Enhancement and Skink Protection Area on Matariki Forest	9
FIGURE - HREP - 04	Davidson Road Wetland Restoration Site and Proposed Covenant	10
FIGURE - HREP - 05	Indicative Habitat Enhancement Planting Areas on Jedburgh Station	11
FIGURE - LMP - 01a	Lizard Survey Locations and Tussock Skink Recordings - Wind Farm Site - West	12
FIGURE - LMP - 01b	Lizard Survey Locations and Tussock Skink Recordings - Wind Farm Site - East	13
FIGURE - LMP - 01c	Tautuku Gecko Survey Locations and Observations - Wind Farm Site - Jedburgh	14
FIGURE - LMP - 02a	Tussock Skink Management Actions - Wind Farm Site - West	15
FIGURE - LMP - 02b	Tussock Skink Management Actions - Wind Farm Site - East	16
FIGURE - LMP - 03	Skink and Tautuku Gecko Release Sites	17
FIGURE - SBMP - 01a	Survey Areas and Results for Helms Stag Beetle - Wind Farm - West	18
FIGURE - SBMP - 01b	Survey Areas and Results for Helms Stag Beetle - Wind Farm - East	19
FIGURE - SBMP - 02a	Salvage and Release Areas for Helms Stag Beetle - Wind Farm - West	20
FIGURE - SBMP - 02b	Salvage and Release Areas for Helms Stag Beetle - Wind Farm - East	21
FIGURE - TIMP - 01a	Notable Terrestrial Invertebrate Survey Areas and Species Found - Wind Farm Site - West	22
FIGURE - TIMP - 01b	Notable Terrestrial Invertebrate Survey Areas and Species Found - Wind Farm Site - East	23
FIGURE - TIMP - 02a	Terrestrial Invertebrate Salvage and Release Areas - Wind Farm Site - West	24
FIGURE - TIMP - 02b	Terrestrial Invertebrate Salvage and Release Areas - Wind Farm Site - East	25
FIGURE - VMP - 01a	Mapped wetlands and Vegetation Ecological Values - Wind Farm Site - West	26
FIGURE - VMP - 01b	Mapped wetlands and Vegetation Ecological Values - Wind Farm Site - East	27
FIGURE - VMP - 02a	Lizard and Invertebrate Constraints - Wind Farm Site - West	28
FIGURE - VMP - 02b	Lizard and Invertebrate Constraints - Wind Farm Site - East	29



LEGEND

- Wind Turbines
- ◼ Grid Injection Point (GIP)
- Sub Station
- - - Transmission Line Route
- Transpower 220kV Transmission Line
- Civil Works Design
- ◻ Wind Farm Site
- ◆ Potential Water Take Location
- M1 Catchment
- M2 Catchment

Note on Monitoring Sites

M1: Mimiha South Branch tributary (near WTG JED18, Jedburgh Station)

M2: Mimiha South Branch upper bridge (Venlaw Forest)

MAP SCALE



Scale: 1:60,000

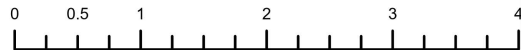
PRINT DATE

11/08/2025

VERSION

1.0

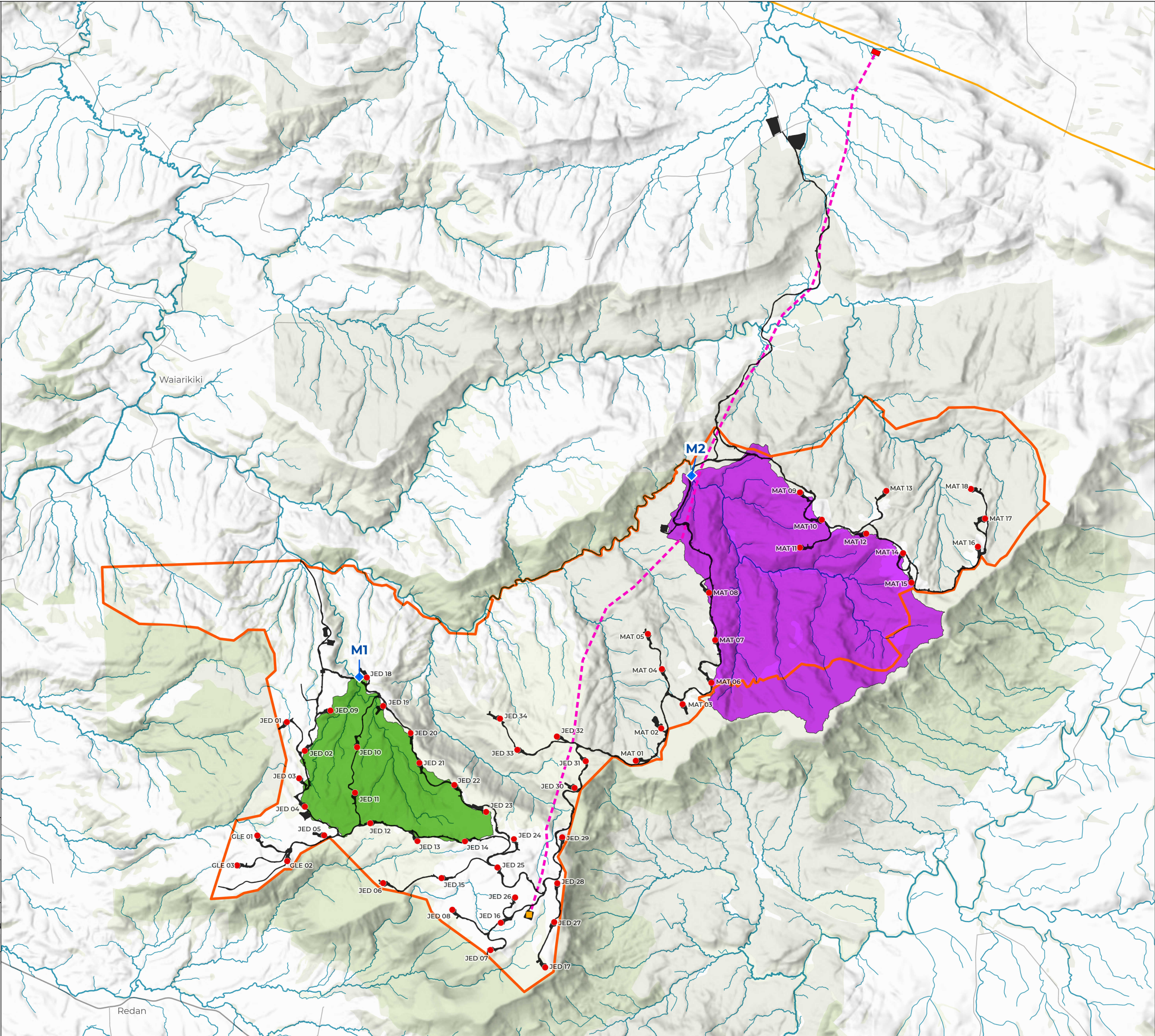
Kilometers



TITLE

FIGURE CONSTRUCTION EMP - 2

WATER TAKE LOCATIONS AND
CORRESPONDING STREAM CATCHMENTS





LEGEND

Wind Farm

- Wind Turbines
- ◆ Grid Injection Point (GIP)
- Sub Station
- Transmission Line Route
- Transpower 220kV Transmission Line
- ▭ Wind Farm Site

Stats NZ Areas

- ▭ Statistical Area 2
- ▭ Local Residents Area (Meshblocks)

Data Credits

Meshblock and Statistical Area boundaries
dwnloaded from Stats NZ Data Finder
(<https://datafinder.stats.govt.nz/>)

LICENSE: Creative Commons Attribution 4.0
International
[https://datafinder.stats.govt.nz/license/
attribution-4-o-international/](https://datafinder.stats.govt.nz/license/attribution-4-o-international/)

MAP SCALE



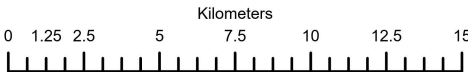
Scale: 1:250,000

PRINT DATE

14/07/2025

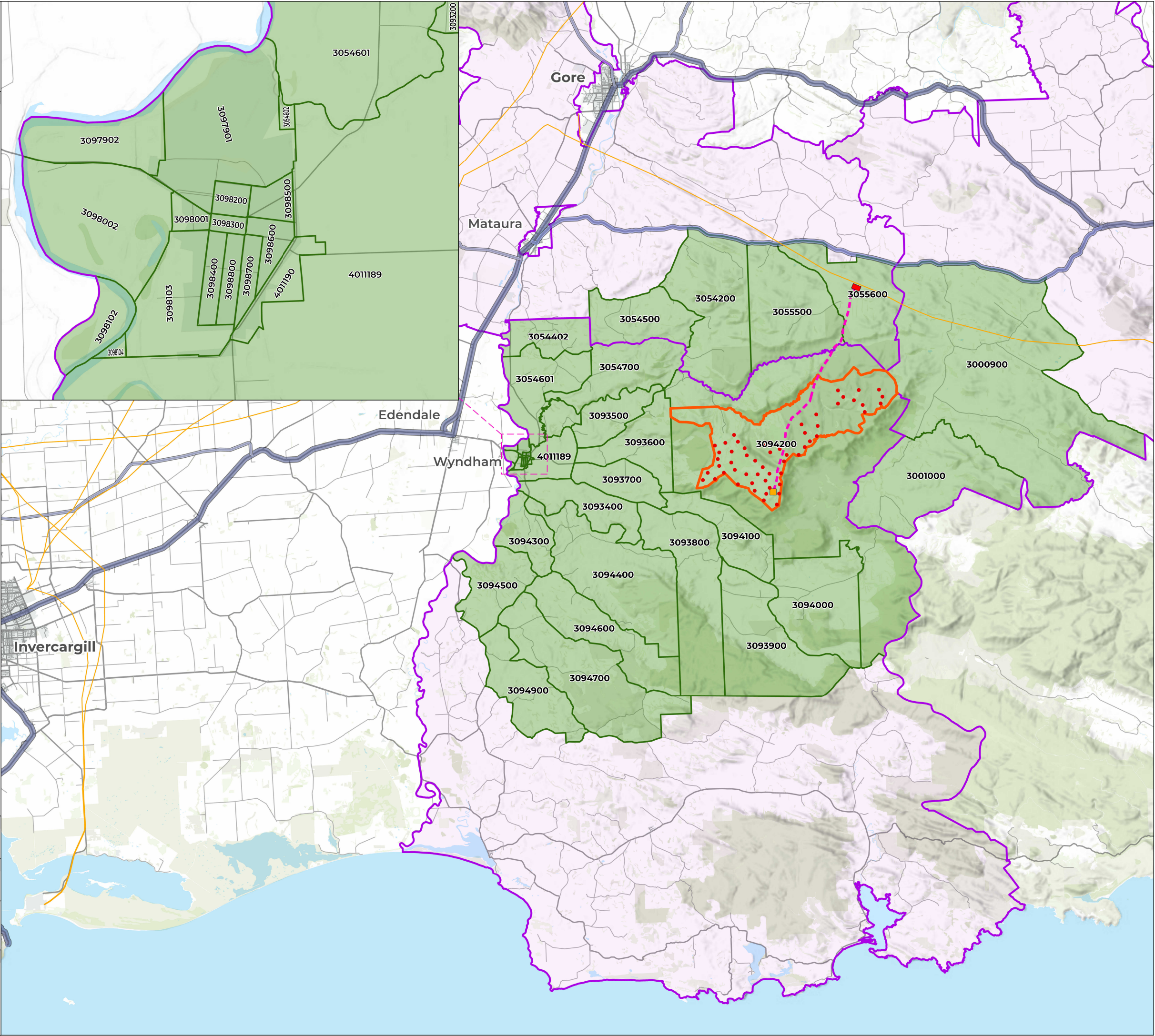
VERSION


1.0



TITLE

**FIGURE
LOCAL RESIDENTS - 1**
DEFINED LOCAL RESIDENTS AREA FOR
THE PURPOSES OF THE PROJECT





LEGEND

Wind Farm


- Wind Turbines
- Transmission Line Route
- Civil Works Design
- Jedburgh Plateau
- Wind Farm Site

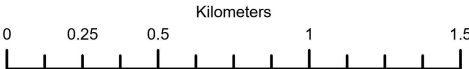
Avifauna Survey

- Acoustic Recording Devices
- Cryptic Playback Location
- Falcon Survey Stations
- Fernbird Playback Locations
- Transmission Line Flight Height Surveys


Bird Count Transects (1 to 12)

- Exotic Conifer Plantation Forest
- Southern Rātā-Kamahī Forest
- Pasture
- Mānuka Forest and Scrub
- Wetland and Shrubland Mosaic

MAP SCALE	PRINT DATE
 <p>Scale: 1:25,000</p>	30/07/2025
	VERSION
	1.0



CREDITS:



Wildlands

Ecological data provided by Wildlands Consultants

TITLE

FIGURE AMP - 1a

AVIFAUNA SURVEY LOCATIONS
WIND FARM SITE - WEST

Service Layer Credits: Eagle Technology, LINZ

3



LEGEND

Wind Farm

- Wind Turbines
- Transmission Line Route
- Civil Works Design
- ▤ Jedburgh Plateau
- Wind Farm Site

Avifauna Survey

- ★ Acoustic Recording Devices
- ✕ Cryptic Playback Location
- Falcon Survey Stations
- ✚ Fernbird Playback Locations
- ▲ Transmission Line Flight Height Surveys

Bird Count Transects (1 to 12)

- Exotic Conifer Plantation Forest
- Southern Rātā-Kamahī Forest
- Pasture
- Mānuka Forest and Scrub
- Wetland and Shrubland Mosaic

MAP SCALE



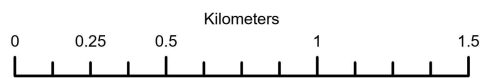
Scale: 1:25,000

PRINT DATE

30/07/2025

VERSION

1.0



CREDITS:



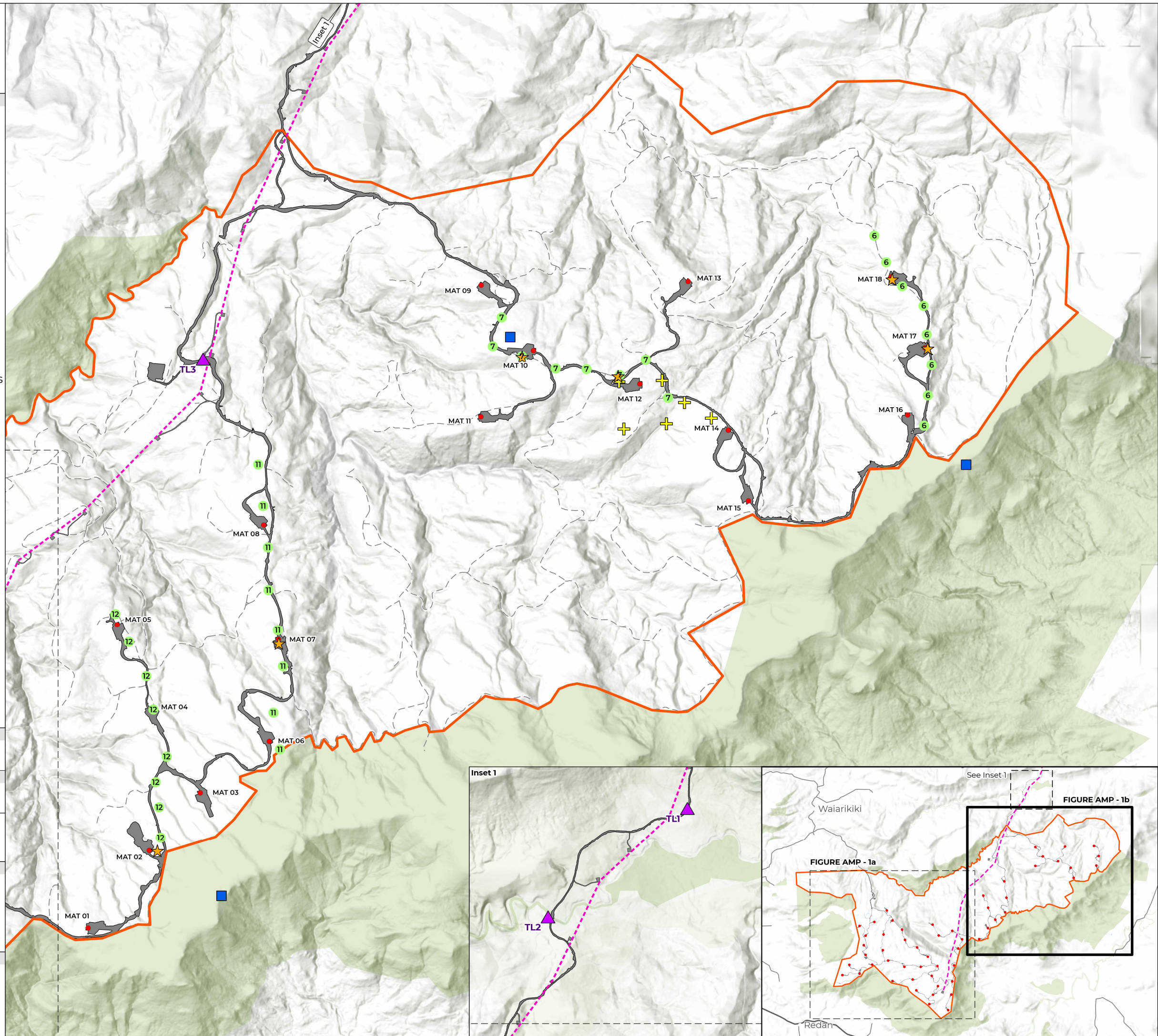
Wildlands

Ecological data provided by Wildlands Consultants

TITLE

FIGURE AMP - 1b

AVIFAUNA SURVEY LOCATIONS
WIND FARM SITE - EAST





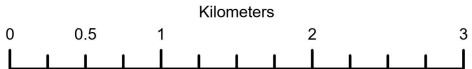
LEGEND

Wind Farm


- Wind Turbines
- Transmission Line Route
- Civil Works Design
- Wind Farm Site

Diverter and Vegetation Types

- Bird Flight Diversers (Dynamic Flappers)
- Bog wetland
- Copper tussock/rautahi marsh
- Fen wetland
- Mānuka forest and scrub
- Mānuka-haumakaroa-mountain holly forest
- Mānuka-inaka-mountain holly-(gorse) scrub and shrubland
- [Mānuka]/gorse-tauhinu scrub
- Southern rātā-kamahi forest

MAP SCALE	PRINT DATE
 <p>Scale: 1:50,000</p>	30/07/2025
	VERSION
	1.0

CREDITS:



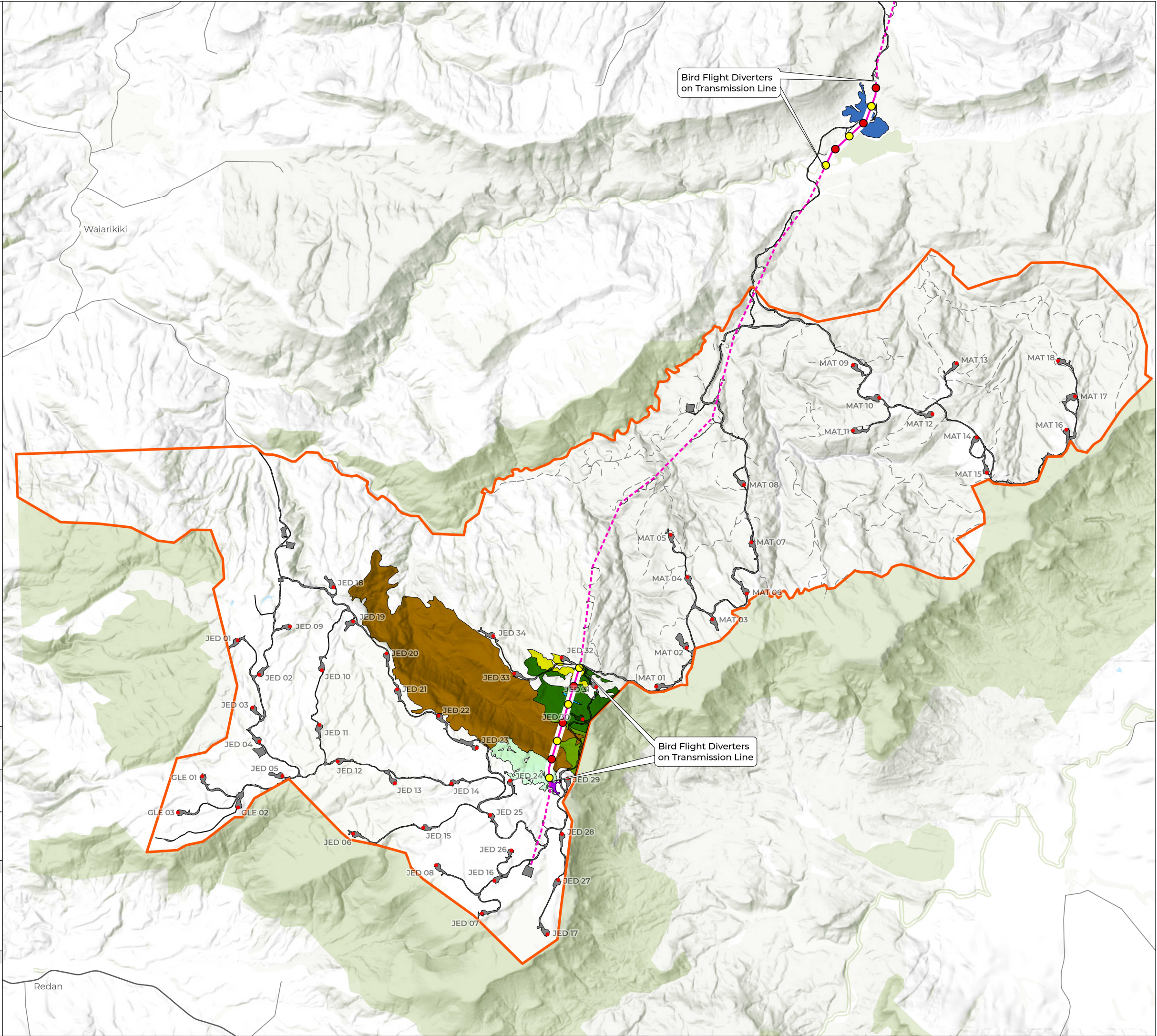
Wildlands

Ecological data provided by Wildlands Consultants

TITLE

FIGURE AMP - 2

LOCATION OF PROPOSED BIRD FLIGHT DIVERTERS ALONG THE TRANSMISSION LINE ROUTE





LEGEND

- Turbines Not Requiring Bat Mitigation
- Turbines Requiring Bat Mitigation
- Civil Works Design
- Wind Farm Site
- Bat Risk Area
- Areas requiring tree identification and assessment for bat roosts

Max Veg Height calculated from 2021 LiDAR

- < 5m
- 5.001 - 10m
- 10.001 - 15m
- 15.001 - 20m
- 20.001 - 25m
- 25.001 - 30m
- 30.001 - 35m
- > 35m

Data Credits

Max vegetation heights calculated from Southland, New Zealand 2020-2024 LiDAR.
LiDAR Released under Creative Commons CC BY 4.0

MAP SCALE



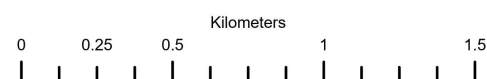
Scale: 1:25,000

PRINT DATE

11/08/2025

VERSION

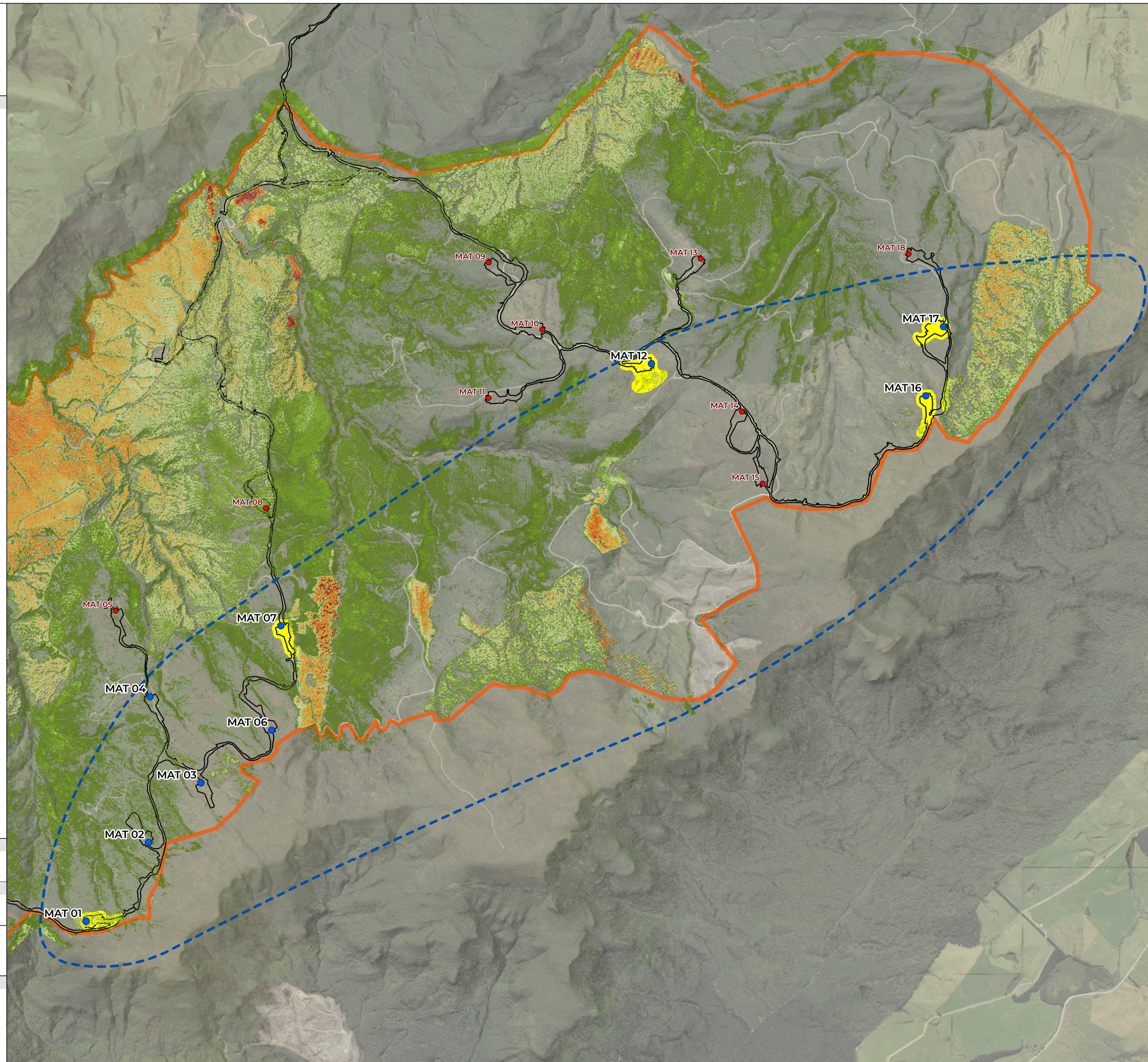
1.0




TITLE

FIGURE BAT MP - 01

AREAS REQUIRING TREE IDENTIFICATION AND ASSESSMENT FOR BAT ROOSTS PRIOR TO TREES BEING REMOVED OR LIMBED





LEGEND

Wind Farm


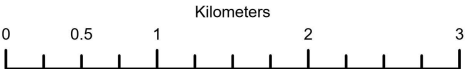
- Wind Turbines
- Transmission Line Route
- Wind Farm Site
- Civil Works Design

Enhancement & Restoration Areas


- Jedburgh Station Pest Control Area (c.1,400 ha, unfenced)
- Jedburgh Plateau (c. 530 ha, unfenced)
- Jedburgh Station Ecological Enhancement Area (c. 245 ha, fenced)
- Copper Tussock Enhancement and Skink Protection Area (c. 8 ha, fenced)
- Plateau Fauna Enhancement Area (c. 55 ha, unfenced)

Davidson Road

- Davidson Road Wetland Restoration Areas (c. 5.1 ha)
- Davidson Road Terrestrial Vegetation Planting Areas (c. 1.0 ha)
- Davidson Road Wetland Enhancement Areas (c. 6.7 ha)
- Contact Energy Property

MAP SCALE	PRINT DATE
 <p>Scale: 1:50,000</p>	11/08/2025
	VERSION
	1.0

CREDITS:



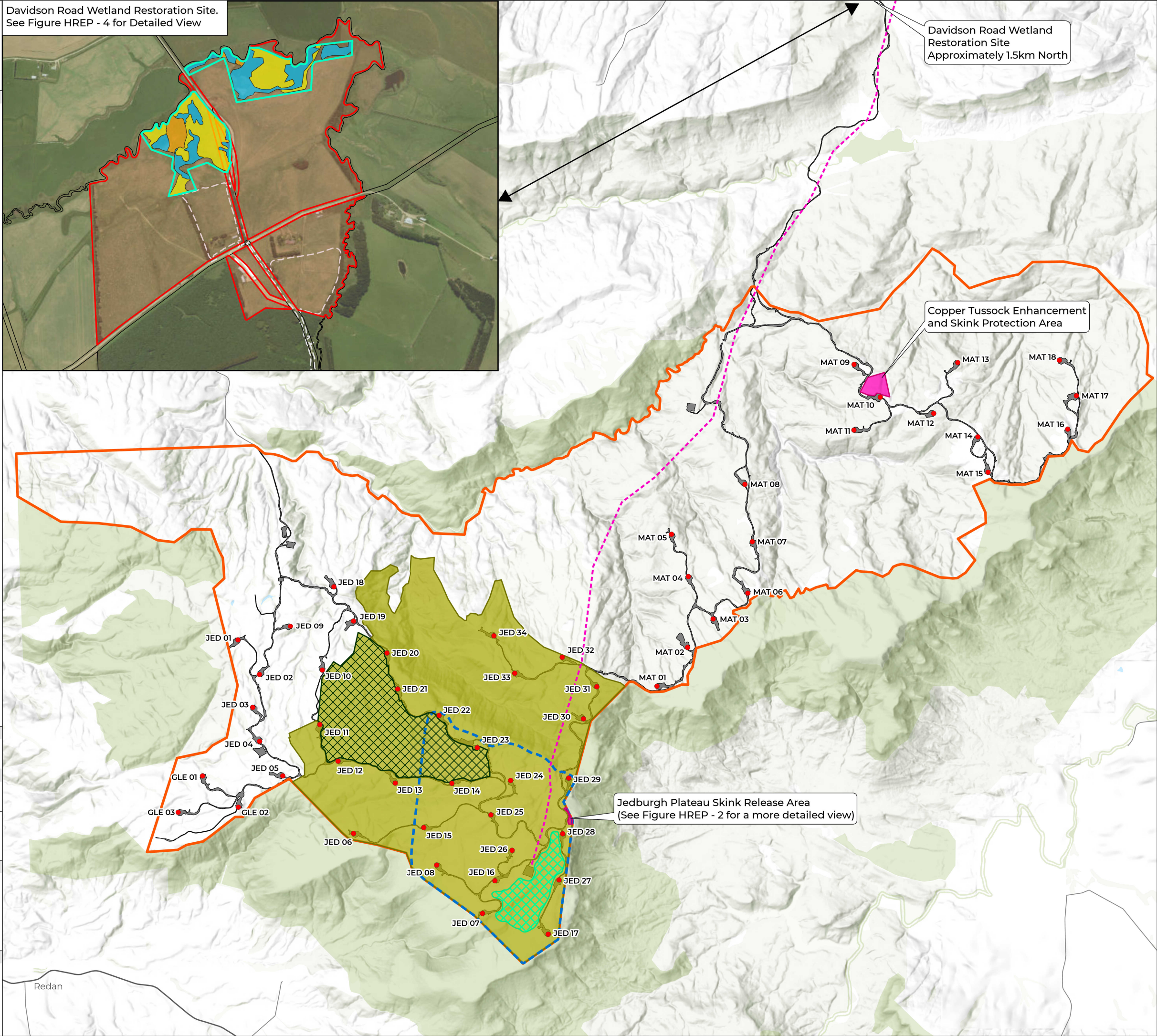
Wildlands


Ecological data provided by Wildlands Consultants

TITLE

FIGURE HREP - 1

OVERVIEW OF THE ECOLOGICAL
ENHANCEMENT AND RESTORATION AREAS
WIND FARM PROJECT SITE





LEGEND

Wind Farm


- Wind Turbines
- Transmission Line Route
- Surplus Fill Disposal Sites
- Wind Farm Site
- Civil Works Design

Indicative Traps and Bait Stations

- DOC150 Traps
- DOC200 Traps
- Cat Kill Traps
- Rodent Bait Stations (100m X 50m Grid)

Enhancement & Restoration Areas


- Jedburgh Station Pest Control Area (c.1,400 ha, unfenced)
- Jedburgh Plateau (c. 530 ha, unfenced)
- Jedburgh Station Ecological Enhancement Area (c. 245 ha, fenced)
- Jedburgh Plateau Skink Release Area (c. 0.48 ha, unfenced)
- Plateau Fauna Enhancement Area (c. 55 ha, unfenced)
- Invertebrate Habitat Enhancement Areas (c. 1.6 ha, unfenced)
- Tautuku Gecko Soft Release Pen (c. 2.6 ha, temporary fence)

MAP SCALE	PRINT DATE
 <p>Scale: 1:20,000</p>	7/08/2025
	VERSION
	1.0

Kilometers

0 0.13 0.25 0.5 0.75 1 1.25

CREDITS:



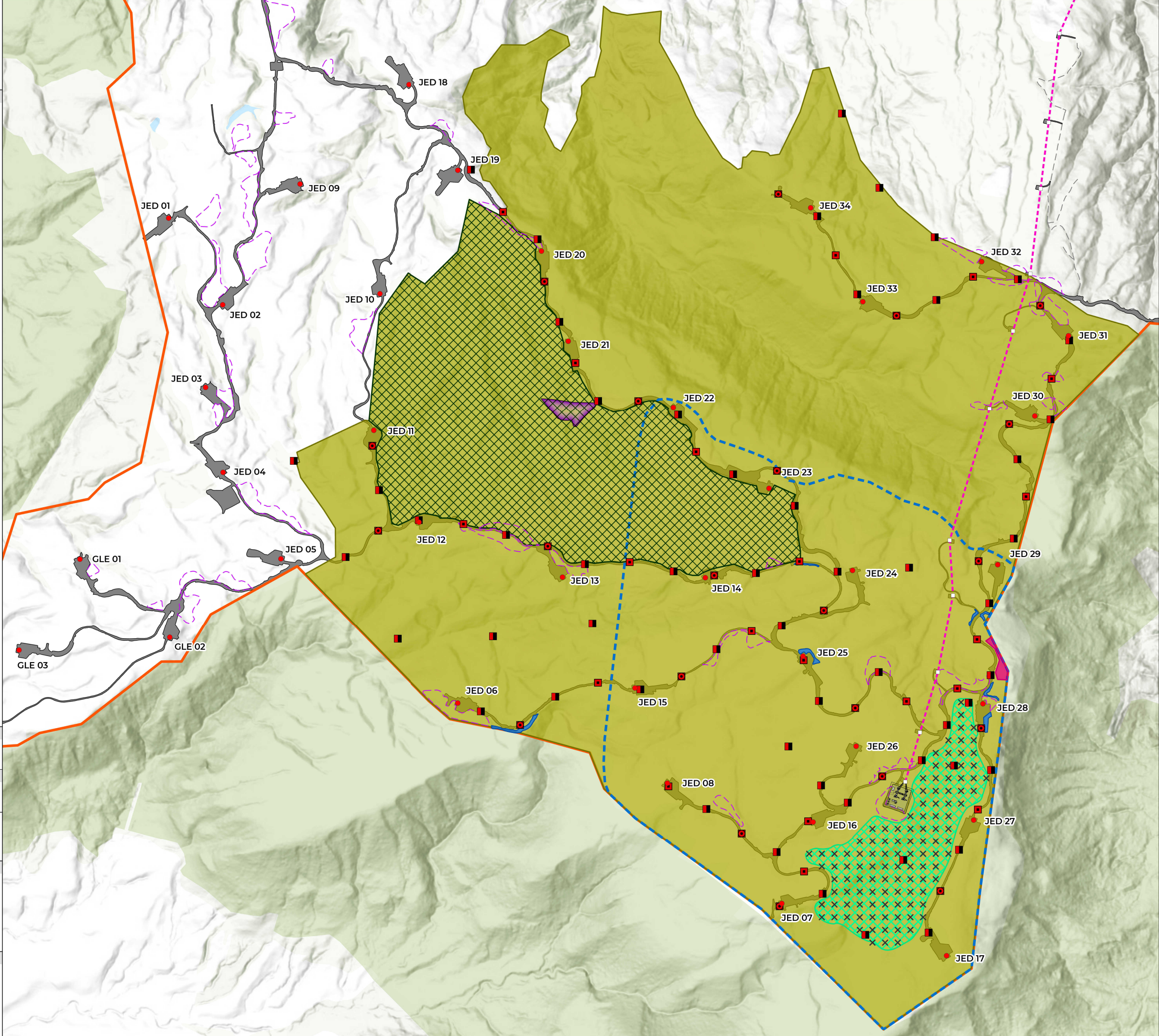
Wildlands

Ecological data provided by Wildlands Consultants

TITLE

FIGURE HREP - 2

ECOLOGICAL ENHANCEMENT AND RESTORATION AREAS ON JEDBURGH STATION





LEGEND

Wind Farm

- Wind Turbines
- Civil Works Design

Enhancement & Restoration Areas

- × Post Release Monitoring Traps
- Ungulate Exclusion Fence
- /// Copper Tussock Enhancement and Skink Protection Area (c. 8 ha)

MAP SCALE



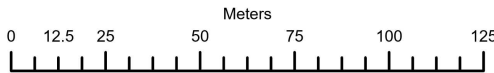
Scale: 1:2,000

PRINT DATE

7/08/2025

VERSION

1.0



CREDITS:



Wildlands

Ecological data provided by Wildlands Consultants

TITLE

FIGURE HREP - 3
COPPER TUSOCK ENHANCEMENT
AND SKINK PROTECTION AREA ON
MATARIKI FOREST





LEGEND

Wind Farm

- Temporary Laydown Areas
- Contact Energy Property

Enhancement & Restoration Areas

- Davidson Road Wetland Restoration and Covenant Area (c. 15 ha, fenced)
- Davidson Road Wetland Restoration Areas (c. 5.1 ha)
- Davidson Road Terrestrial Vegetation Planting Areas (c. 1.0 ha)
- Davidson Road Wetland Enhancement Areas (c. 6.7 ha)

Note
All areas shown above are subject to further discussion with Gore District Council about the paper road through the Contact Energy property.

MAP SCALE

N

Scale: 1:3,500

Meters

0 25 50 100 150 200

PRINT DATE

7/08/2025

VERSION

1.0

CREDITS:

Wildlands

Ecological data provided by Wildlands Consultants

TITLE

FIGURE HREP - 4

DAVIDSON ROAD WETLAND RESTORATION SITE AND PROPOSED COVENANT





LEGEND

Wind Farm

- Wind Turbines
- Transmission Line Route
- Surplus Fill Disposal Sites
- ▭ Wind Farm Site
- ▭ Civil Works Design

Enhancement & Restoration Areas

- ▭ Jedburgh Station Pest Control Area (c.1,400 ha, unfenced)
- Jedburgh Plateau (c. 530 ha, unfenced)
- ▭ Jedburgh Station Ecological Enhancement Area (c. 245 ha, fenced)
- ▭ Jedburgh Plateau Skink Release Area (c. 0.48 ha, unfenced)
- ▭ Plateau Fauna Enhancement Area (c. 55 ha, unfenced)
- ▭ Invertebrate Habitat Enhancement Areas (c. 1.6 ha, unfenced)
- ▭ Tautuku Gecko Soft Release Pen (c. 2.6 ha, temporary fence)

MAP SCALE



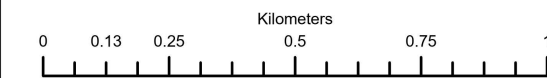
Scale: 1:15,000

PRINT DATE

12/08/2025

VERSION

1.0



CREDITS:

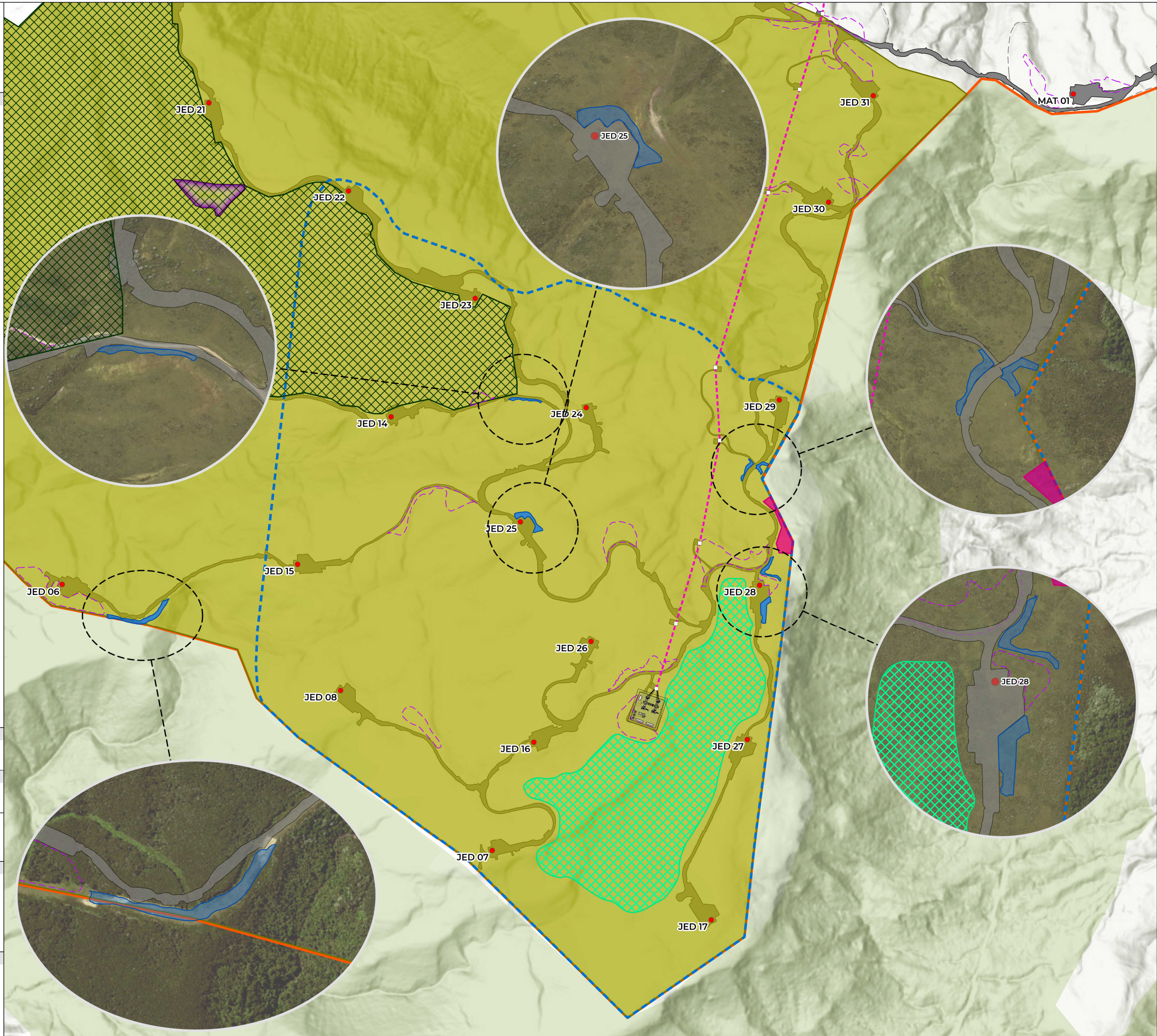


Wildlands

Ecological data provided by Wildlands Consultants

TITLE

FIGURE HREP - 5
INDICATIVE HABITAT ENHANCEMENT
PLANTING AREAS ON
JEDBURGH STATION





LEGEND

Wind Farm

- Wind Turbines
- Transmission Line Route
- - - Indicative Fill Disposal Sites
- - - Jedburgh Plateau
- Civil Works Design
- Wind Farm Site

Lizard Surveys

- ▲ Tussock Skink Recorded
- ◆ Artificial Cover Objects (Lizard ACOs)

MAP SCALE



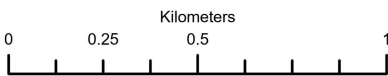
Scale: 1:20,000

PRINT DATE

8/08/2025

VERSION

1.0



CREDITS:

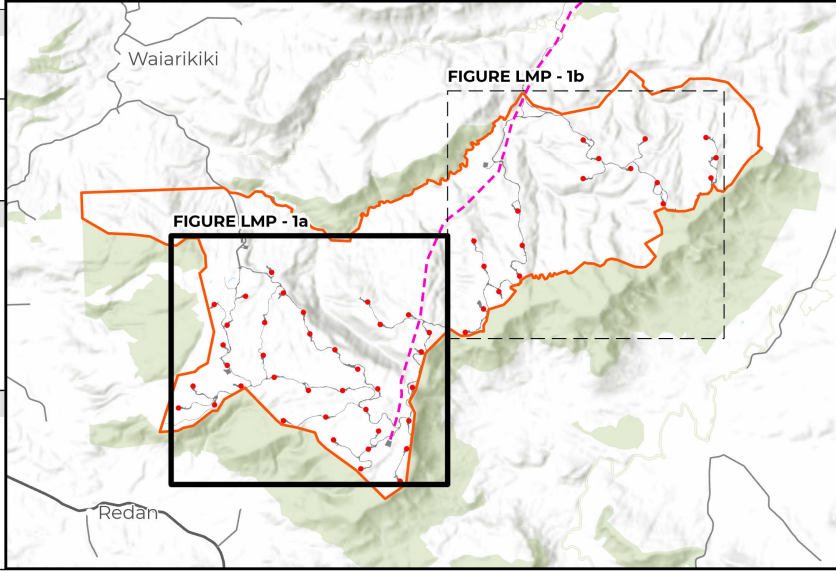
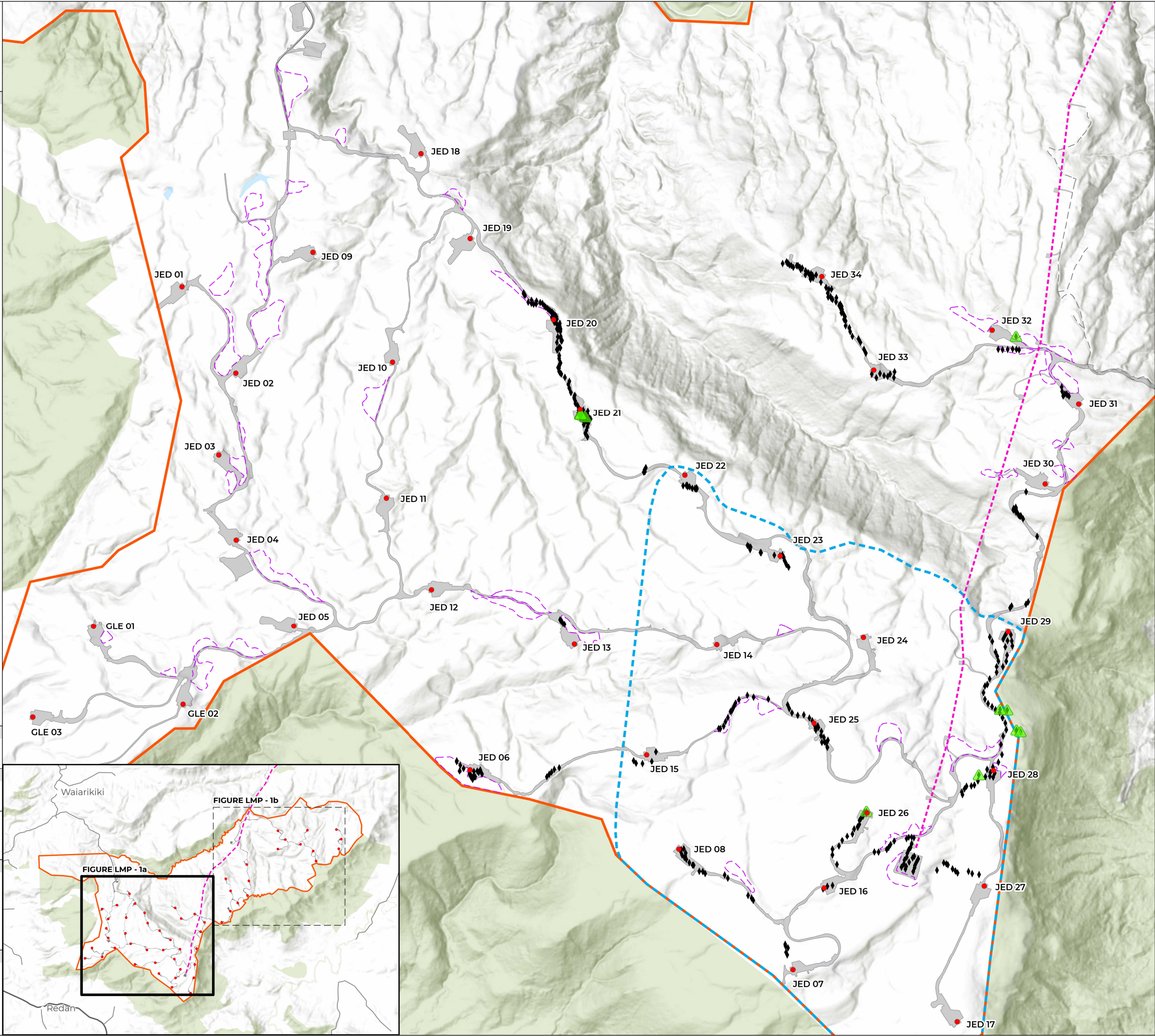


Wildlands

Ecological data provided by Wildlands Consultants

TITLE

FIGURE LMP - 1a
LIZARD SURVEY LOCATIONS AND
TUSOCK SKINK RECORDINGS
WIND FARM SITE - WEST





LEGEND

Wind Farm

- Wind Turbines
- Transmission Line Route
- Indicative Fill Disposal Sites
- Civil Works Design
- Wind Farm Site

Lizard Surveys

- ▲ Tussock Skink Recorded
- ◆ Artificial Cover Objects (Lizard ACOs)

MAP SCALE



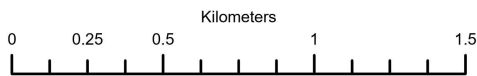
Scale: 1:25,000

PRINT DATE

8/08/2025

VERSION

1.0



CREDITS:

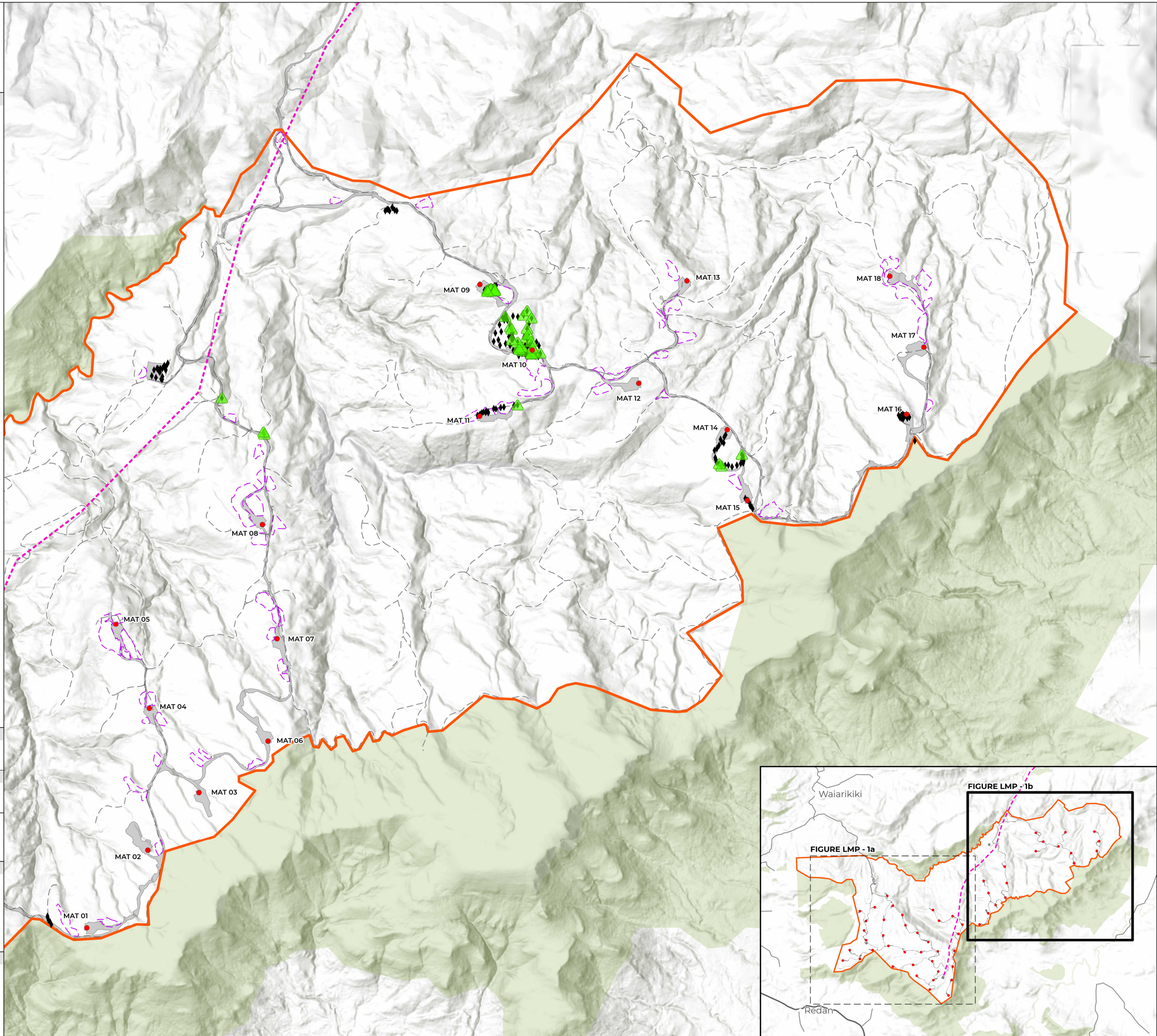


Wildlands

Ecological data provided by Wildlands Consultants

TITLE

FIGURE LMP - 1b
LIZARD SURVEY LOCATIONS AND
TUSOCK SKINK RECORDINGS
WIND FARM SITE - EAST





LEGEND

Wind Farm

- Wind Turbines
- - - Transmission Line Route
- - - Indicative Fill Disposal Sites
- - - Jedburgh Plateau
- Civil Works Design
- Wind Farm Site

Gecko Surveys

- ▲ Tautuku Gecko Observations
- ◆ Tree ACOs (TACOs)
- Spotlighting Tracks

MAP SCALE



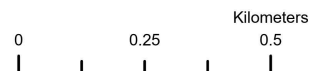
Scale: 1:15,000

PRINT DATE

8/08/2025

VERSION

1.0



CREDITS:

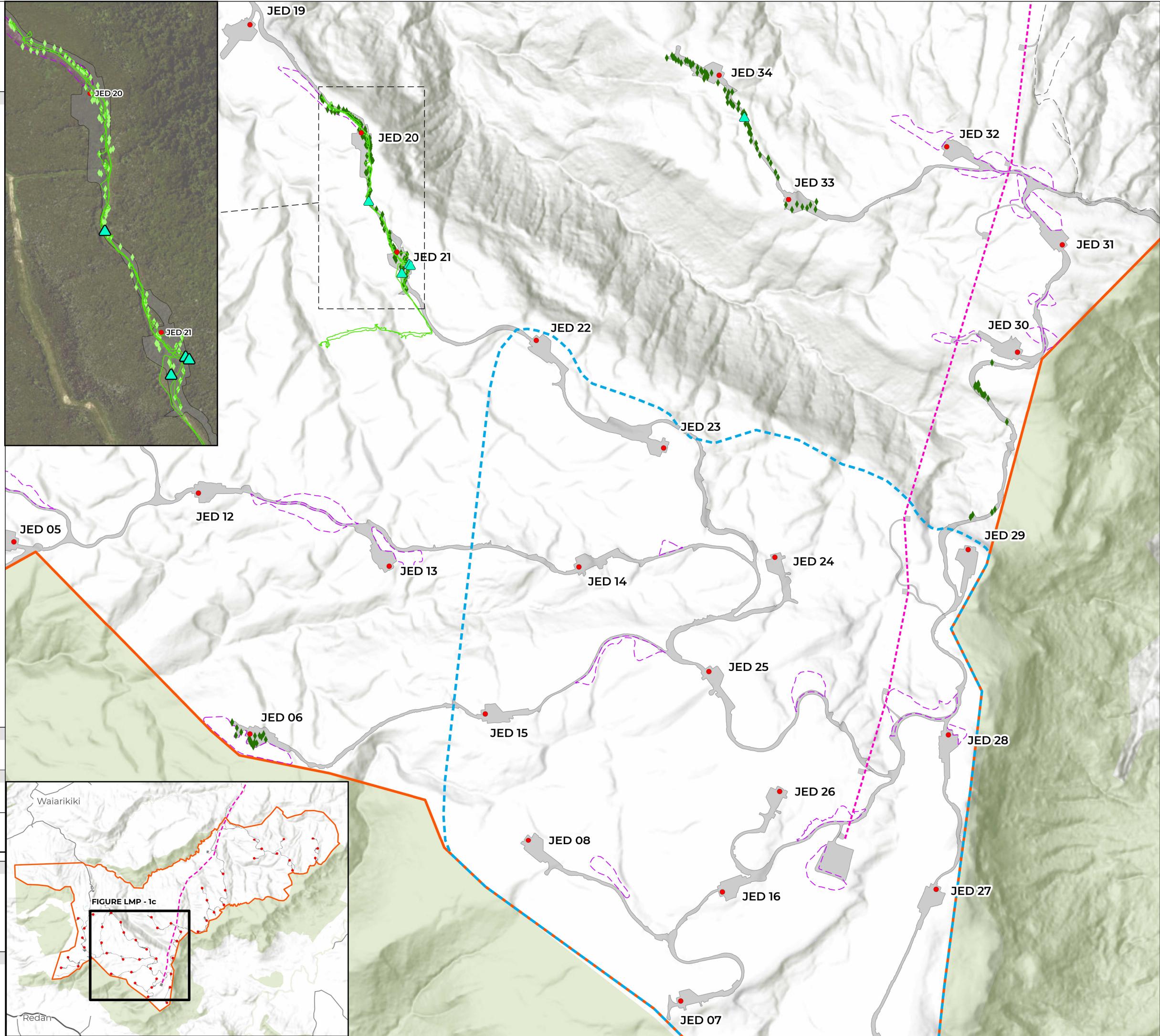


Wildlands

Ecological data provided by Wildlands Consultants

TITLE

FIGURE LMP - 1c
TAUTUKU GECKO SURVEY LOCATIONS
AND OBSERVATIONS
WIND FARM SITE - JEDBURGH





LEGEND

Wind Farm

- Wind Turbines
- Transmission Line Route
- Indicative Fill Disposal Sites
- Jedburgh Plateau
- Civil Works Design
- Wind Farm Site

Management Actions

- ▲ Tussock Skink Recorded
- ▲ Tautuku Gecko Observations

Species Confirmed or Likely Present

- /// Tautuku gecko
- /// Tussock skink
- /// Tussock skink and Tautuku gecko

Vegetation Clearance Requirements

- Supervised vegetation clearance may be required
- Supervised vegetation clearance will be required

Management Actions

- Tussock skink: Pre-clearance checks
- Tussock skink: Salvage
- Tussock skink and Tautuku gecko: Pre-clearance checks and Salvage

MAP SCALE



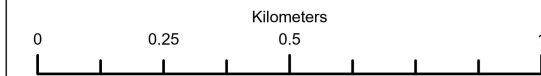
Scale: 1:15,000

PRINT DATE

11/08/2025

VERSION

1.0



CREDITS:



Wildlands

Ecological data provided by Wildlands Consultants

TITLE

FIGURE LMP - 2a

LIZARD MANAGEMENT ACTIONS
WIND FARM SITE - WEST

