

Puke Kapo Hau | Mahinerangi Wind Farm Stage 2.
Tararua Wind Power Ltd.
Graphic Attachments to the Landscape Assessment.

October 2025

Isthmus.



Land.
People.
Culture.
Isthmus.

Document record				
Issue	Revision	Author	QA	Date
Draft	Rev A	AA	SB	09.05.25
Draft	Rev B	AA	SB	14.05.25
Draft	Rev C	AA	AE	04.06.25
Draft	Rev D	AE	GL	12.06.25
Final	Rev E	SB	SB	06.10.25

Contents

Figure 1 - Context Map	5
Figure 2 - Site Context and ONL Map	6
Figure 3 - Approved Layout and Realistic Consented Stage 2	7
Figure 4 - Proposed Layout	8
Figure 5 - Proposed Wind Farm Elements	9
Figure 6 - Landform and Wind Farm Layout Pattern	10
Figure 7 - Dwelling Locations	11
Figure 8 - Viewpoint Location Map	12
Viewpoint 1 - ‘Realistic Consented Stage 2’	14
Viewpoint 1 - ‘Proposed Changes Stage 2’	16
Viewpoint 2 - ‘Realistic Consented Stage 2’	18
Viewpoint 2 - ‘Proposed Changes Stage 2’	20
Viewpoint 3 - ‘Realistic Consented Stage 2’	22
Viewpoint 3 - ‘Proposed Changes Stage 2’	24
Viewpoint 4 - ‘Realistic Consented Stage 2’	26
Viewpoint 4 - ‘Proposed Changes Stage 2’	28
Viewpoint 5 - ‘Realistic Consented Stage 2’	30
Viewpoint 5 - ‘Proposed Changes Stage 2’	32
Viewpoint 6 - ‘Realistic Consented Stage 2’	34
Viewpoint 6 - ‘Proposed Changes Stage 2’	36
Viewpoint 7 - ‘Realistic Consented Stage 2’	38
Viewpoint 7 - ‘Proposed Changes Stage 2’	40
Viewpoint 8 - ‘Realistic Consented Stage 2’	42
Viewpoint 8 - ‘Proposed Changes Stage 2’	44
Photosimulation Methodology	47

Page Intentionally Blank.



Figure 1 - Context Map

Scale: 1: 500,000 @ A3
Basemap Source: Land Information New Zealand (Eagle Technology)

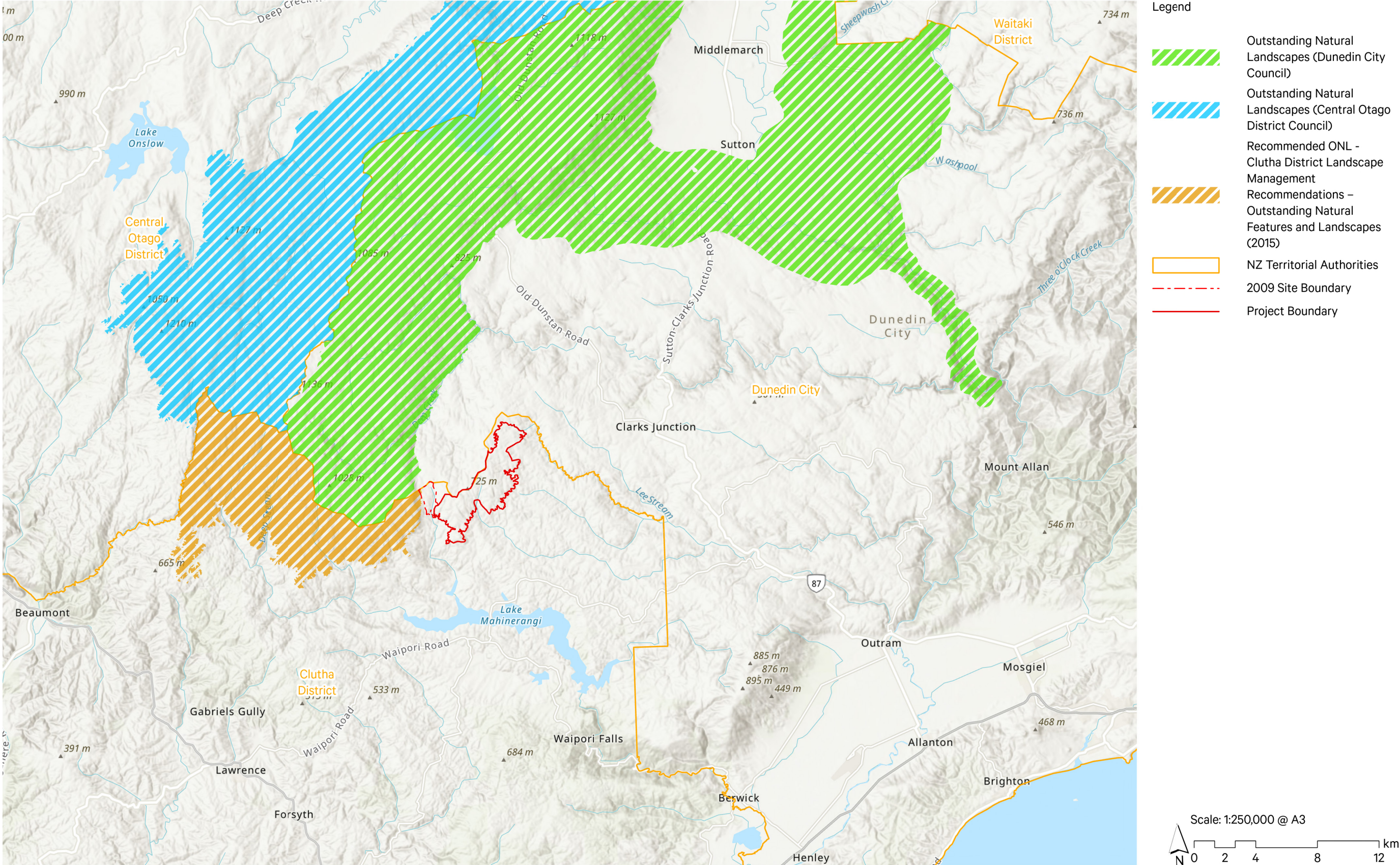


Figure 2 - Site Context and ONL Map

Scale: 1:250,000 @ A3
Basemap Source: Land Information New Zealand (Eagle Technology)

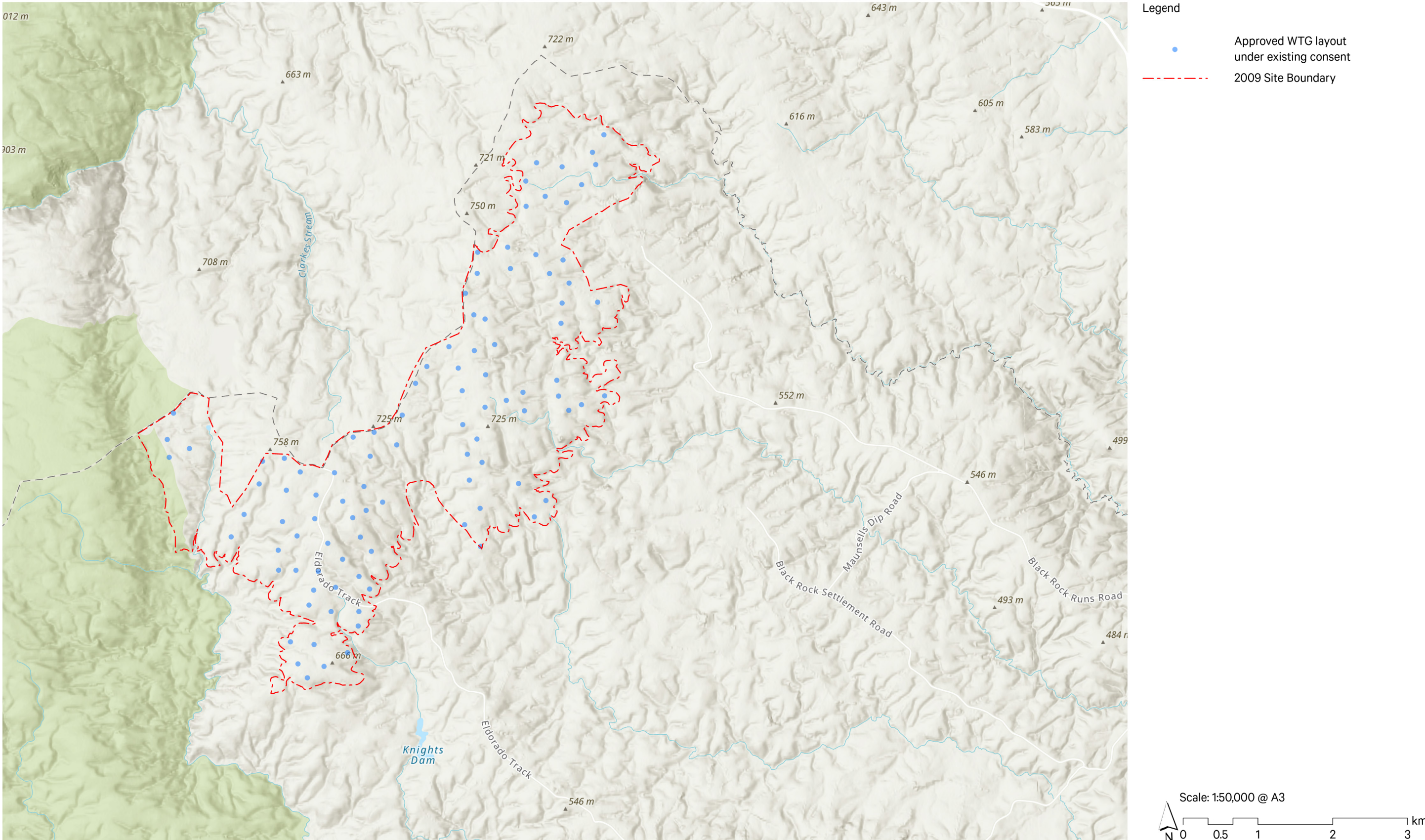


Figure 3 - Approved Turbine Layout 2009 Consent

Scale: 1:50,000 @ A3
Basemap Source: Land Information New Zealand (Eagle Technology)

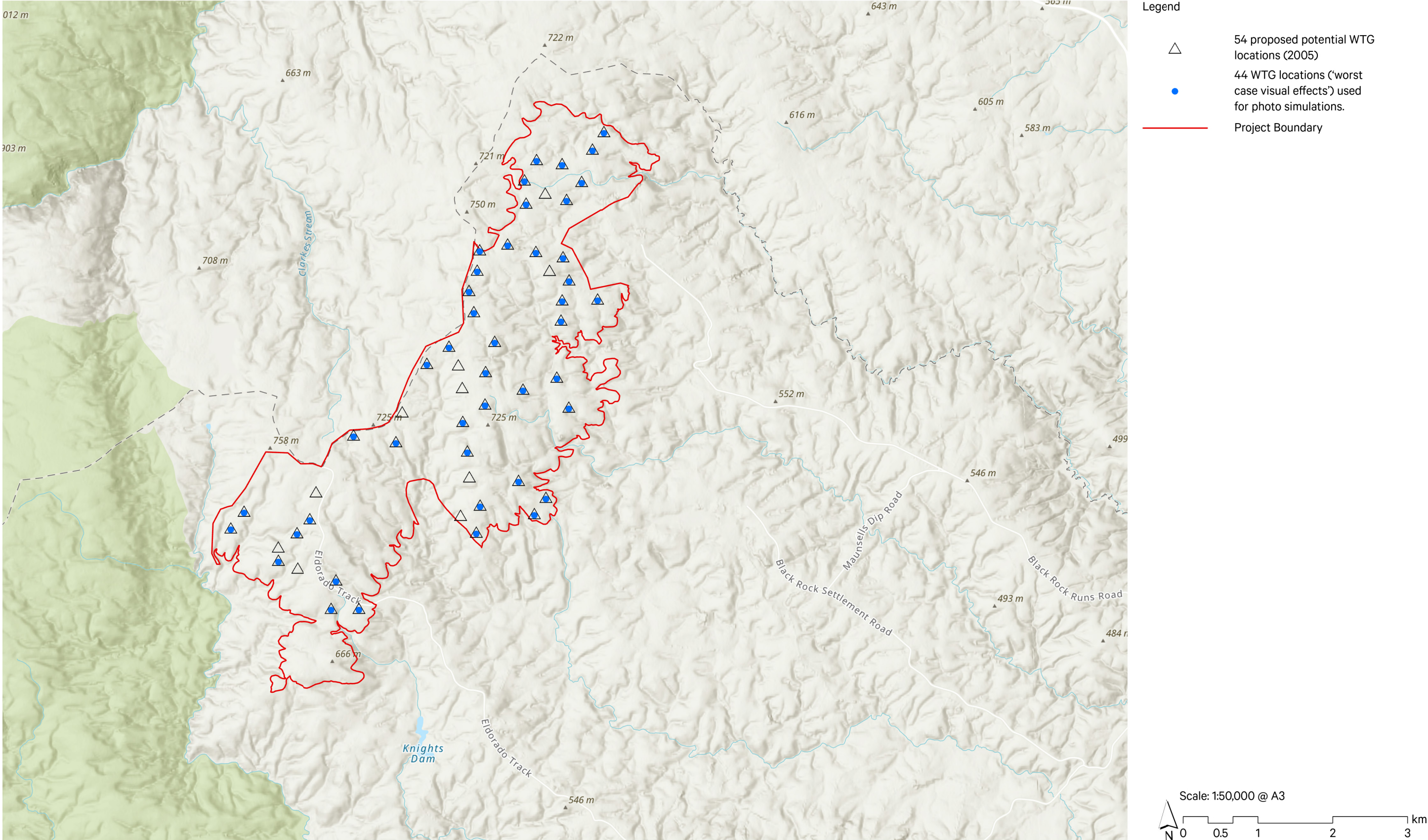


Figure 4 - Proposed Layout

Scale: 1:50,000 @ A3
 Basemap Source: Land Information New Zealand (Eagle Technology)

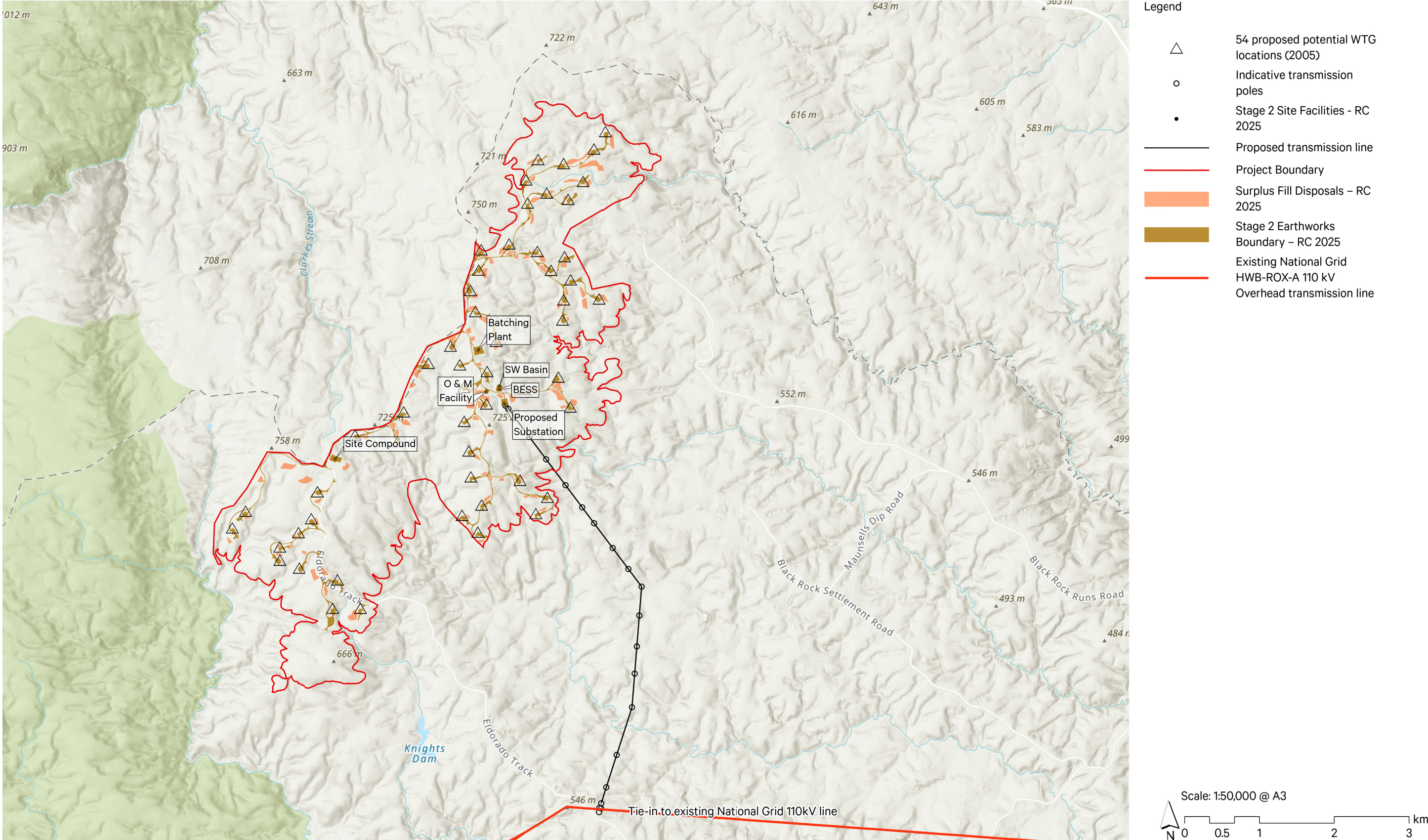
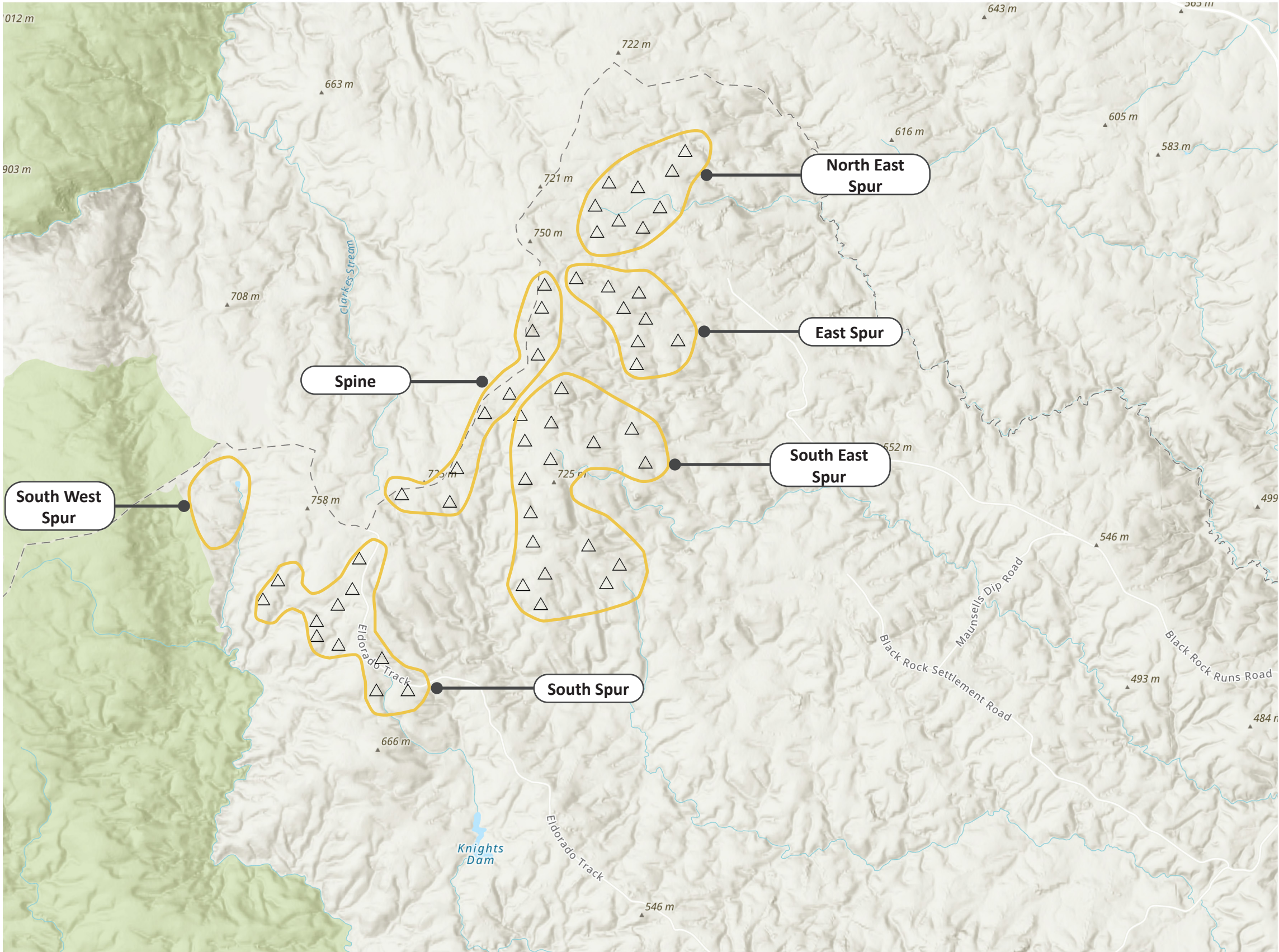


Figure 5 - Proposed Wind Farm Elements

Scale: 1:50,000 @ A3
 Basemap Source: Land Information New Zealand (Eagle Technology)



Legend



54 proposed potential WTG locations (2005)

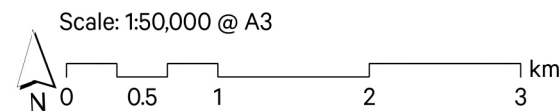
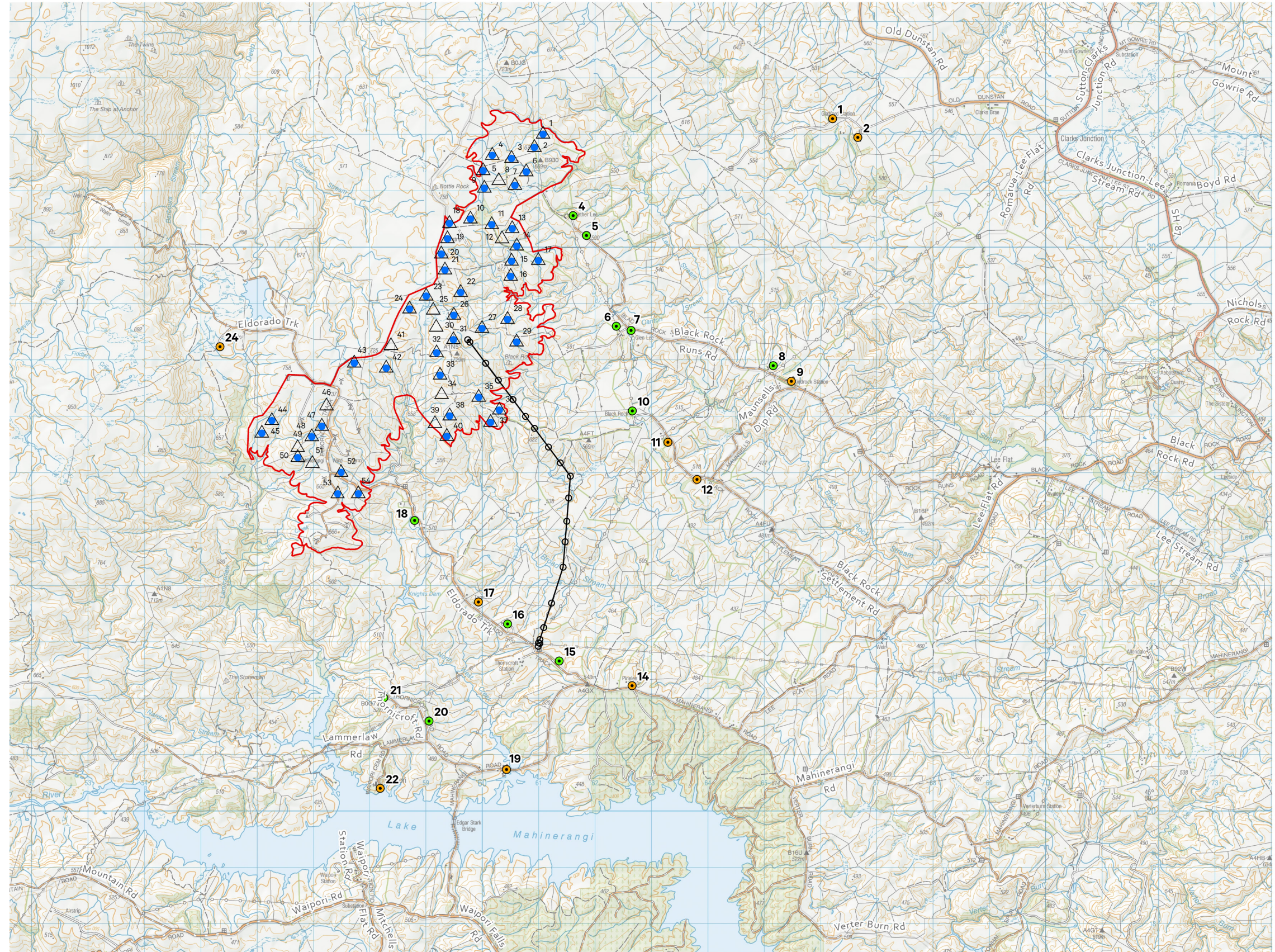


Figure 6 - Landform and Wind Farm Layout Pattern

Scale: 1:50,000 @ A3
Basemap Source: Land Information New Zealand (Eagle Technology)



Legend

Participating



Dwellings on non-participating properties



Dwellings on wind farm participating properties



44 WTG locations ('worst case visual effects') used for photo simulations.



54 proposed potential WTG locations (2005)



Transmission Structure locations

Proposed Transmission Line

Project Boundary

Roads

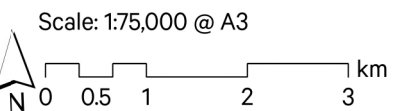
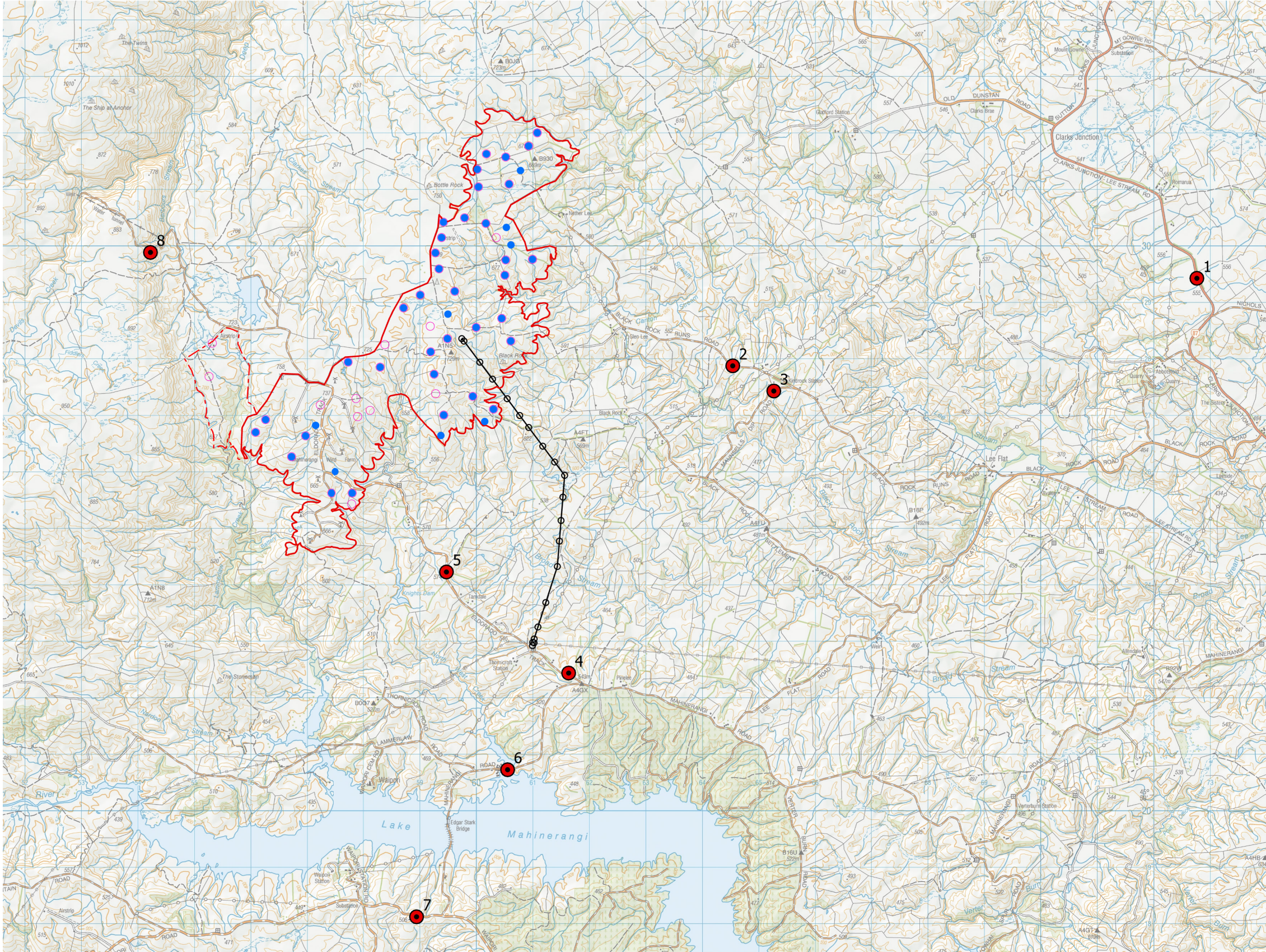
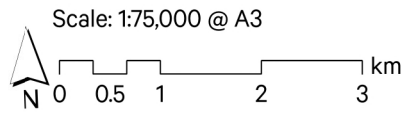


Figure 7 - Dwelling Locations

Scale: 1:75,000 @ A3
Basemap Source: Land Information New Zealand (Eagle Technology)



- Legend
- Viewpoints
 - Realistic Consented Layout Stage 2
 - 44 Worst Case (Turbine) Locations
 - Transmission Structure locations
 - Proposed Transmission Line
 - 2009 Site Boundary
 - Project Boundary



Page Intentionally Blank.

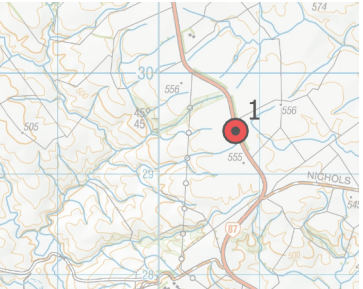
Figure 8 - Public Viewpoint Locations

Scale: 1: 75,000 @ A3
Basemap Source: Land Information New Zealand (Eagle Technology)



Viewpoint 1 - Realistic Consented Stage 2

View from State Highway 87 (Clarks Junction-Lee Stream Road), approximately 1km to the south of Rapid No. 3056, looking to the west.



Original Photo | Stitched image | DSLR Nikon D810 50mm lens | SB | 1142hrs 11 December 2024 | 1372758E 4929428N (NZTM) | Viewpoint Elevation: 549m
Field of view | Approximately 110° horizontal and 34° vertical field of view
Scale | Print images across 2 x A3 pages for correct scale at 400m reading distance | Use scale bar to adjust sizing on screen for correct scale at 400m reading distance





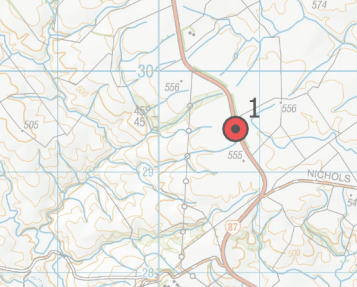
Viewpoint 1 - Proposed Changes Stage 2

View from State Highway 87 (Clarks Junction-Lee Stream Road), approximately 1km to the south of Rapid No. 3056, looking to the west.



Isthmus.

Puke Kapo Hau | Mahinerangi Wind Farm | Tararua Wind Power Ltd | October 2025



Isthmus.

Puke Kapo Hau | Mahinerangi Wind Farm | Tararua Wind Power Ltd | October 2025

Original Photo | Stitched image | DSLR Nikon D810 50mm lens | SB | 1142hrs 11 December 2024 | 1372758E 4929428N (NZTM) | Viewpoint Elevation: 549m

Field of view | Approximately 110° horizontal and 34° vertical field of view

Scale | Print images across 2 x A3 pages for correct scale at 400m reading distance | Use scale bar to adjust sizing on screen for correct scale at 400m reading distance

5cm



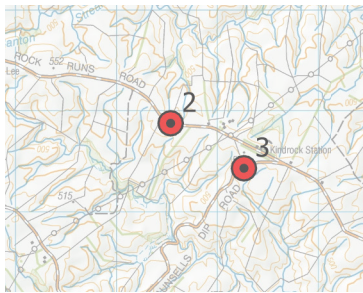
Viewpoint 2 - Realistic Consented Stage 2

View looking west from Black Rock Runs Road, approximately 500m west of Rapid No. 574.



Isthmus.

Puke Kapo Hau | Mahinerangi Wind Farm | Tararua Wind Power Ltd | October 2025



Isthmus.

Puke Kapo Hau | Mahinerangi Wind Farm | Tararua Wind Power Ltd | October 2025

Original Photo | Stitched image | DSLR Nikon D810 50mm lens | SB | 0855hrs 11 December 2024 | 1364534E 4927879N (NZTM) | Viewpoint Elevation: 521m

Field of view | Approximately 110° horizontal and 34° vertical field of view

Scale | Print images across 2 x A3 pages for correct scale at 400m reading distance | Use scale bar to adjust sizing on screen for correct scale at 400m reading distance

5cm