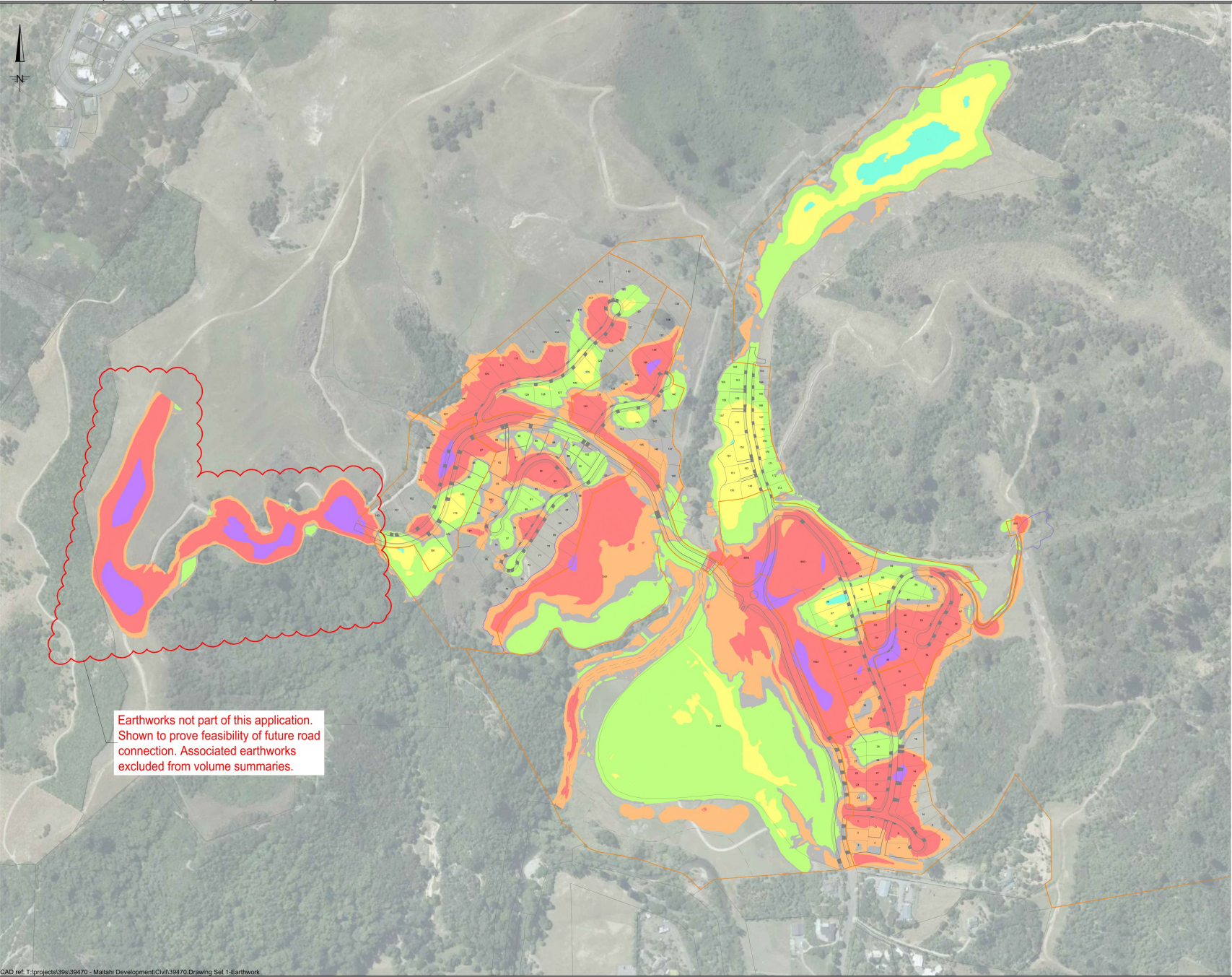


Rev.	Date	Reason	Approved
P1	7/02/24	Issued for Information	RB
P2	24/09/24	Issued for Information	RB
P3	22/11/24	Issued for Information	RB
P4	31/01/25	Issued for Information	RB
P5	4/02/25	Issued for information	RB

FOR INFORMATION

NOTE : Additional excavation and filling may be undertaken beyond the area shown at the direction of the Geo-Professional to allow access to and construction of slope instability mitigation works, construction of temporary haul roads, to allow trimming of cut batters to merge with adjacent ground profiles for landscape enhancement and temporary works for erosion and sediment control.



GAD ref. T:\projects\39470 - Maitahi Development\Chill\39470.Drawing Set 1-Earthwork