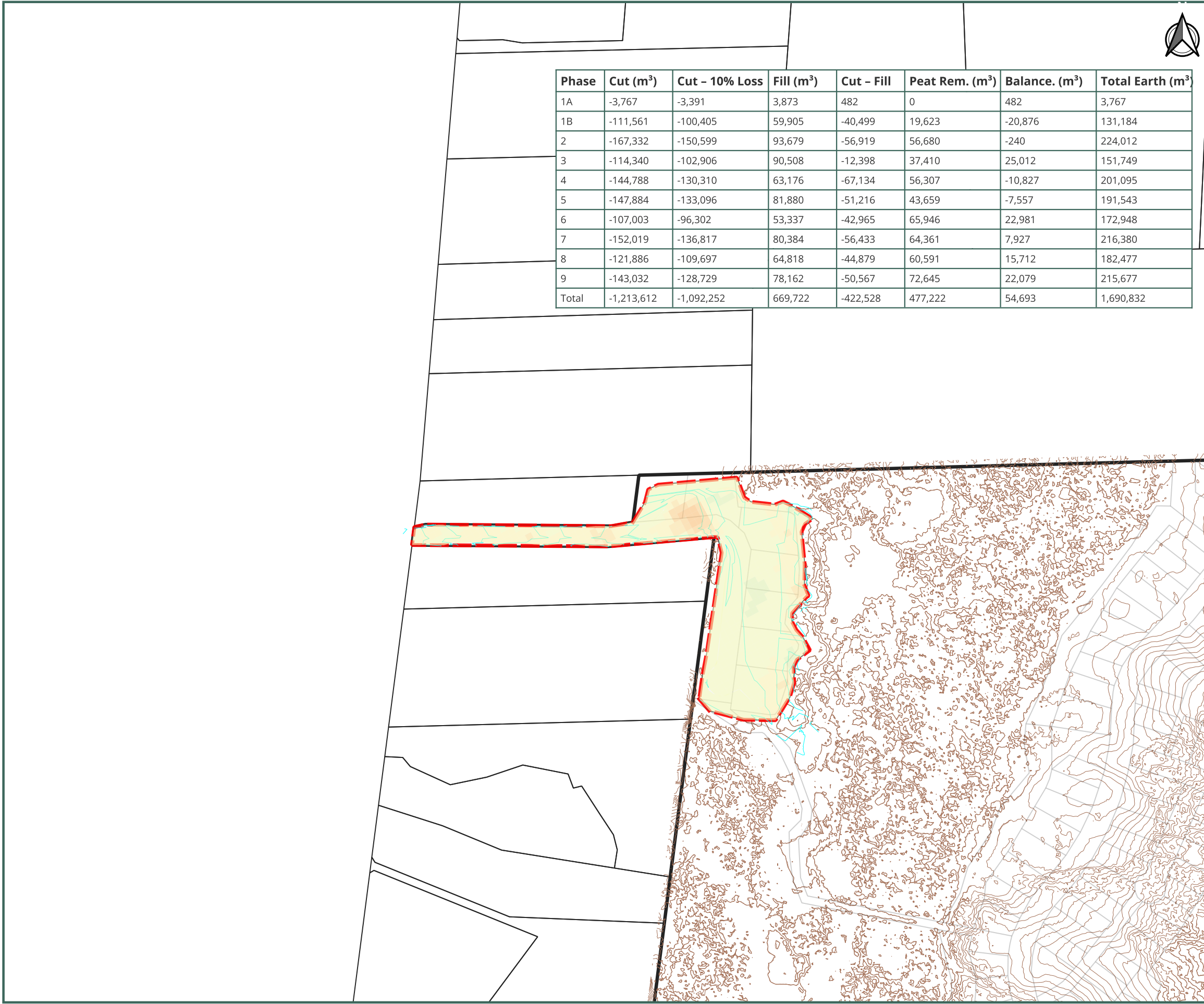
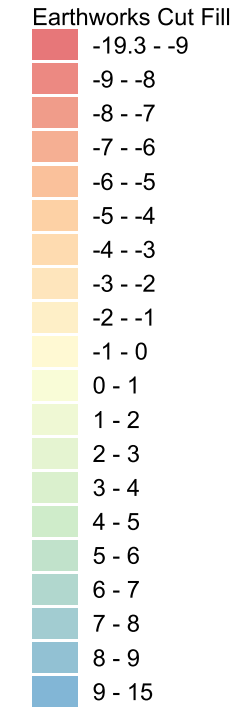


Phase	Cut (m ³)	Cut - 10% Loss	Fill (m ³)	Cut - Fill	Peat Rem. (m ³)	Balance. (m ³)	Total Earth (m ³)
1A	-3,767	-3,391	3,873	482	0	482	3,767
1B	-111,561	-100,405	59,905	-40,499	19,623	-20,876	131,184
2	-167,332	-150,599	93,679	-56,919	56,680	-240	224,012
3	-114,340	-102,906	90,508	-12,398	37,410	25,012	151,749
4	-144,788	-130,310	63,176	-67,134	56,307	-10,827	201,095
5	-147,884	-133,096	81,880	-51,216	43,659	-7,557	191,543
6	-107,003	-96,302	53,337	-42,965	65,946	22,981	172,948
7	-152,019	-136,817	80,384	-56,433	64,361	7,927	216,380
8	-121,886	-109,697	64,818	-44,879	60,591	15,712	182,477
9	-143,032	-128,729	78,162	-50,567	72,645	22,079	215,677
Total	-1,213,612	-1,092,252	669,722	-422,528	477,222	54,693	1,690,832

- LEGEND**
- - Existing watercourse
 - - EX contours (1.0 m)
 - - Proposed contours (1.0 m)
 - █ Bulk Earthworks stage Boundary (Indicative)
 - █ HILL ZONE
 - █ Haul Road
 - █ Peat Drying Area
 - █ Stockpile Area



- Notes:**
1. Bulk earthworks are intended to moderate landform to provide buildable platforms, generally 0-5% grades (subject to detailed design).
 2. In steeper areas works aim to achieve practical buildable platforms with transitions resolved using batters or low retaining where required.
 3. Earthworks boundaries and staging are indicative; sequencing to follow certified CEMP and ESCP.
 4. Levels in NZVD2016; contours indicative and subject to detailed design.
 5. Concept grading surface verifies bulk earthworks feasibility; final levels to be refined at detailed design (including stormwater modelling) to confirm flood-free platforms with appropriate freeboard (KCDC standards).
 6. Cut and fill volumes are approximate and subject to construction survey.

Bulk Earthworks Plan
Phase 1A

Waikanae North Developments Ltd

Waikanae North
Peka Peka, Kapiti Coast

© Landlink Limited 2025



1 Ngaio Road, Waikanae 5036 + contactus@Landlink.nz

STAGE	PH1
	A
REVISION	C
REVISION DETAILS	Issued For Consent

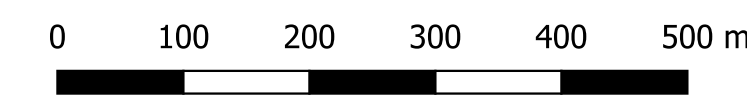
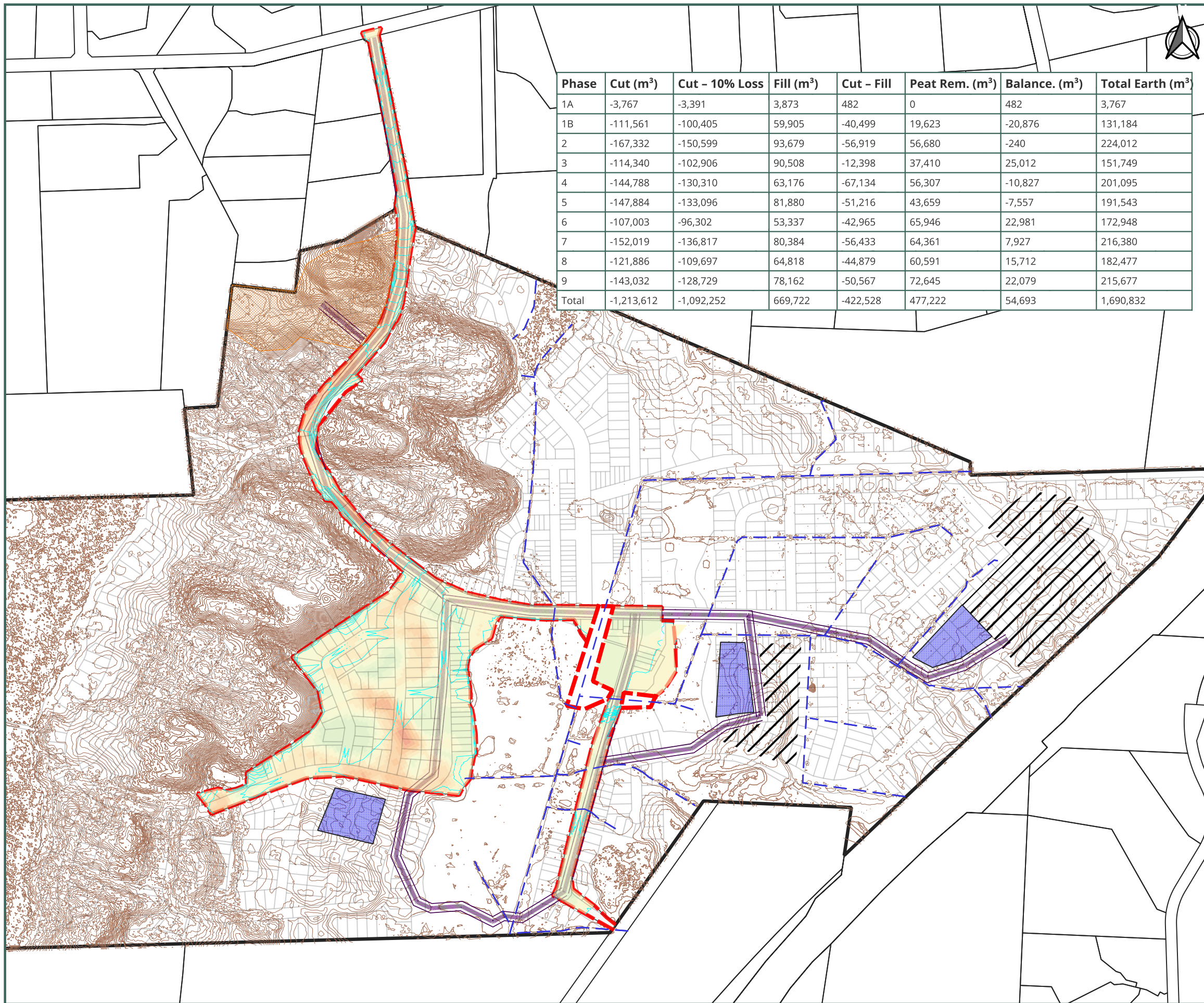
DESIGNED BY	JJH
DRAWN BY	JJH
APPROVED BY	PT

DATE 2026-03-13

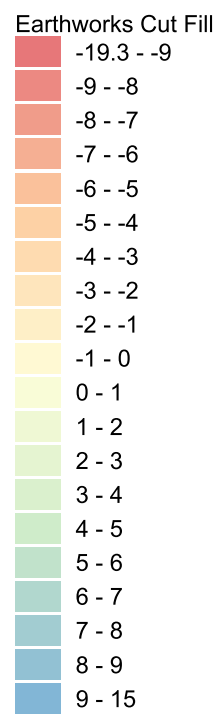
SCALE Refer Scale Bar

2911-PH1A-EW-210

This drawing contains data from other sources and has been prepared for a specific site and event. Landlink Limited does not accept any liability for its accuracy, content or unauthorised use.



- LEGEND**
- - Existing watercourse
 - - EX contours (1.0 m)
 - - Proposed contours (1.0 m)
 - [Red dashed line] Bulk Earthworks stage Boundary (Indicative)
 - [Hatched box] HILL ZONE
 - [Purple line] Haul Road
 - [Diagonal lines] Peat Drying Area
 - [Blue box] Stockpile Area



- Notes:**
1. Bulk earthworks are intended to moderate landform to provide buildable platforms, generally 0-5% grades (subject to detailed design).
 2. In steeper areas works aim to achieve practical buildable platforms with transitions resolved using batters or low retaining where required.
 3. Earthworks boundaries and staging are indicative; sequencing to follow certified CEMP and ESCP.
 4. Levels in NZVD2016; contours indicative and subject to detailed design.
 5. Concept grading surface verifies bulk earthworks feasibility; final levels to be refined at detailed design (including stormwater modelling) to confirm flood-free platforms with appropriate freeboard (KCDC standards).
 6. Cut and fill volumes are approximate and subject to construction survey.

Bulk Earthworks Plan
Phase 1B

Waikanae North Developments Ltd

Waikanae North
Peka Peka, Kapiti Coast

© Landlink Limited 2025



1 Ngaio Road, Waikanae 5036 + contactus@Landlink.nz

STAGE	PH1 B
REVISION	C
REVISION DETAILS	Issued For Consent

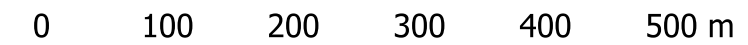
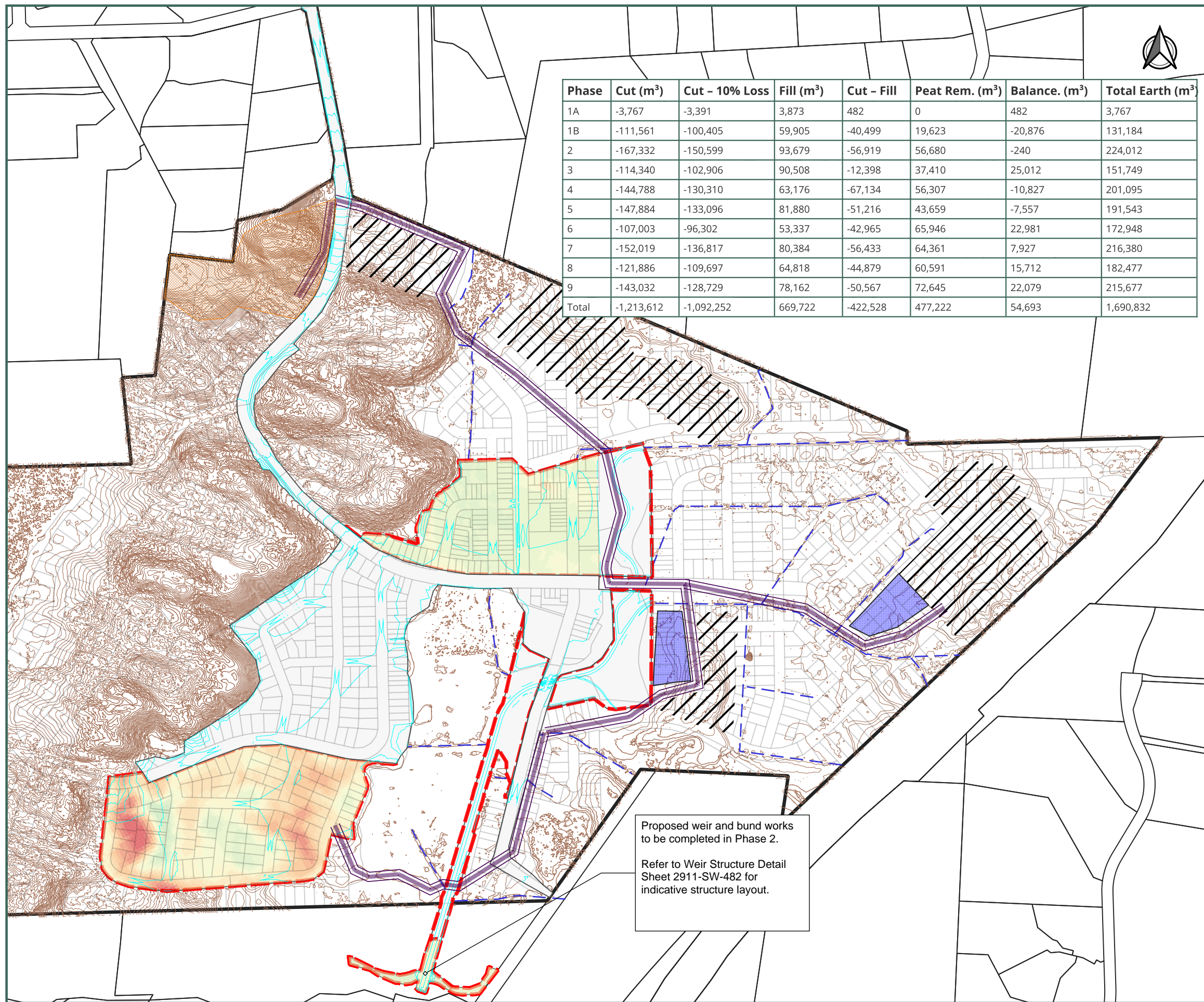
DESIGNED BY	JJH
DRAWN BY	JJH
APPROVED BY	PT

This drawing contains data from other sources and has been prepared for a specific site and event. Landlink Limited does not accept any liability for its accuracy, content or unauthorised use.

DATE 2026-03-13

SCALE Refer Scale Bar

2911-PH1B-EW-211



LEGEND

- Existing watercourse
- EX contours (1.0 m)
- Proposed contours (1.0 m)
- Bulk Earthworks stage Boundary (Indicative)
- HILL ZONE
- Haul Road
- Peat Drying Area
- Stockpile area

Phase 2 - Cut Fill Depth (M)

- 19.3 - -9
- 9 - -8
- 8 - -7
- 7 - -6
- 6 - -5
- 5 - -4
- 4 - -3
- 3 - -2
- 2 - -1
- 1 - 0
- 0 - 1
- 1 - 2
- 2 - 3
- 3 - 4
- 4 - 5
- 5 - 6
- 6 - 7
- 7 - 8
- 8 - 9
- 9 - 15

- Notes:**
1. Bulk earthworks are intended to moderate landform to provide buildable platforms, generally 0-5% grades (subject to detailed design).
 2. In steeper areas works aim to achieve practical buildable platforms with transitions resolved using batters or low retaining where required.
 3. Earthworks boundaries and staging are indicative; sequencing to follow certified CEMP and ESCP.
 4. Levels in NZVD2016; contours indicative and subject to detailed design.
 5. Concept grading surface verifies bulk earthworks feasibility; final levels to be refined at detailed design (including stormwater modelling) to confirm flood-free platforms with appropriate freeboard (KCDC standards).
 6. Cut and fill volumes are approximate and subject to construction survey.

Proposed weir and bund works to be completed in Phase 2.
Refer to Weir Structure Detail Sheet 2911-SW-482 for indicative structure layout.

Bulk Earthworks Plan
Phase 2

Waikanae North Developments Ltd

Waikanae North
Peka Peka, Kapiti Coast

© Landlink Limited 2025



1 Ngaio Road, Waikanae 5036 + contactus@Landlink.nz

STAGE	PH2
REVISION	C
REVISION DETAILS	Issued For Consent

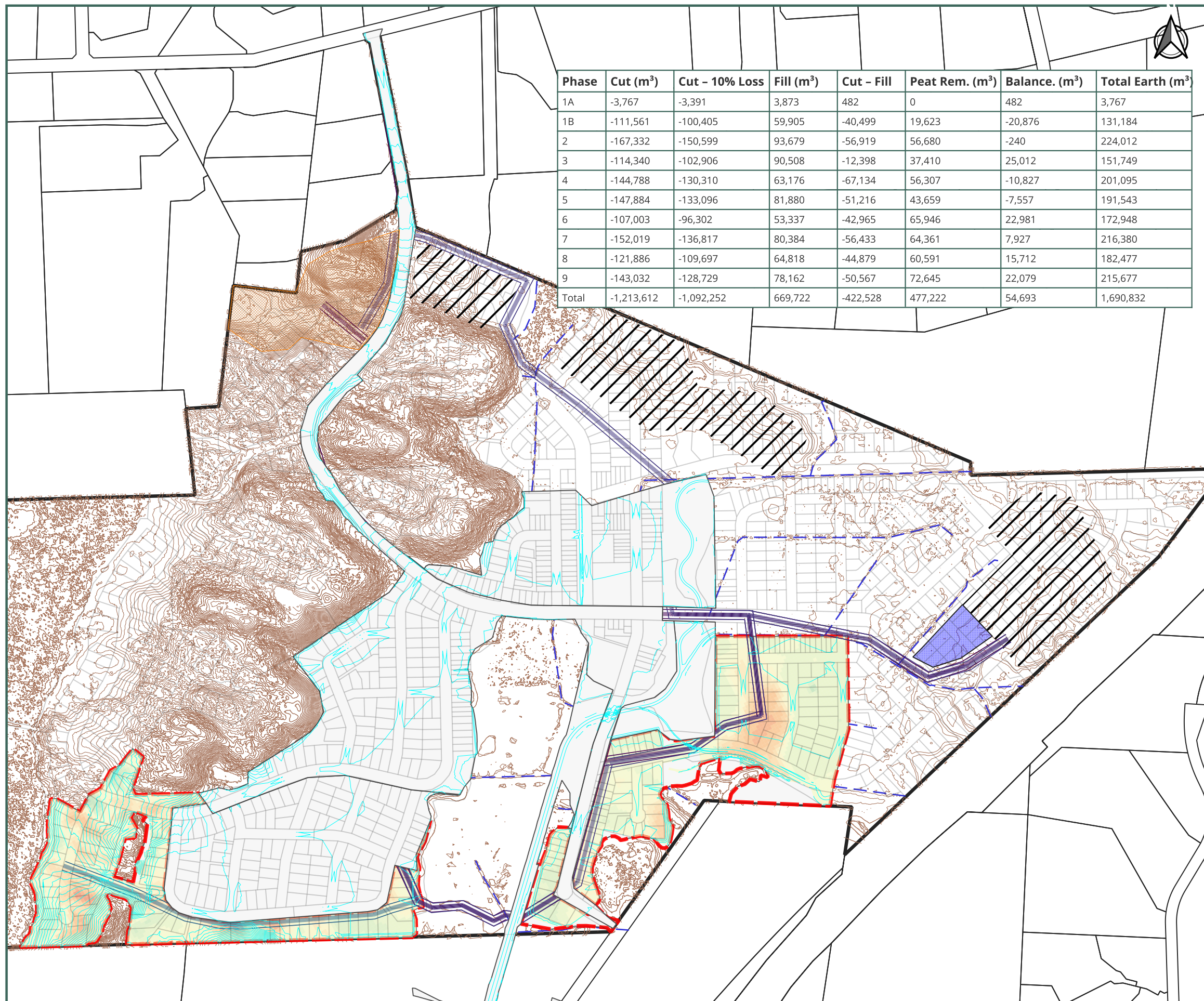
DESIGNED BY	JJH
DRAWN BY	JJH
APPROVED BY	PT

This drawing contains data from other sources and has been prepared for a specific site and event. Landlink Limited does not accept any liability for its accuracy, content or unauthorised use.

DATE 2026-03-13

SCALE Refer Scale Bar

2911-PH2-EW-212



0 100 200 300 400 500 m

LEGEND

- Existing watercourse
- EX contours (1.0 m)
- Proposed contours (1.0 m)
- Bulk Earthworks stage Boundary (Indicative)
- HILL ZONE
- Peat Drying Area
- Stockpile area
- Haul Road

Phase 3 - Cut Fill Depth (m)

- 19.3 - -9
- 9 - -8
- 8 - -7
- 7 - -6
- 6 - -5
- 5 - -4
- 4 - -3
- 3 - -2
- 2 - -1
- 1 - 0
- 0 - 1
- 1 - 2
- 2 - 3
- 3 - 4
- 4 - 5
- 5 - 6
- 6 - 7
- 7 - 8
- 8 - 9
- 9 - 15

Notes:

1. Bulk earthworks are intended to moderate landform to provide buildable platforms, generally 0-5% grades (subject to detailed design).
2. In steeper areas works aim to achieve practical buildable platforms with transitions resolved using batters or low retaining where required.
3. Earthworks boundaries and staging are indicative; sequencing to follow certified CEMP and ESCP.
4. Levels in NZVD2016; contours indicative and subject to detailed design.
5. Concept grading surface verifies bulk earthworks feasibility; final levels to be refined at detailed design (including stormwater modelling) to confirm flood-free platforms with appropriate freeboard (KCDC standards).
6. Cut and fill volumes are approximate and subject to construction survey.

Bulk Earthworks Plan
Phase 3

Waikanae North Developments Ltd

Waikanae North

Peka Peka, Kapiti Coast

© Landlink Limited 2025



1 Ngaio Road, Waikanae 5036 + contactus@Landlink.nz

STAGE	PH3
REVISION	C
REVISION DETAILS	Issued For Consent

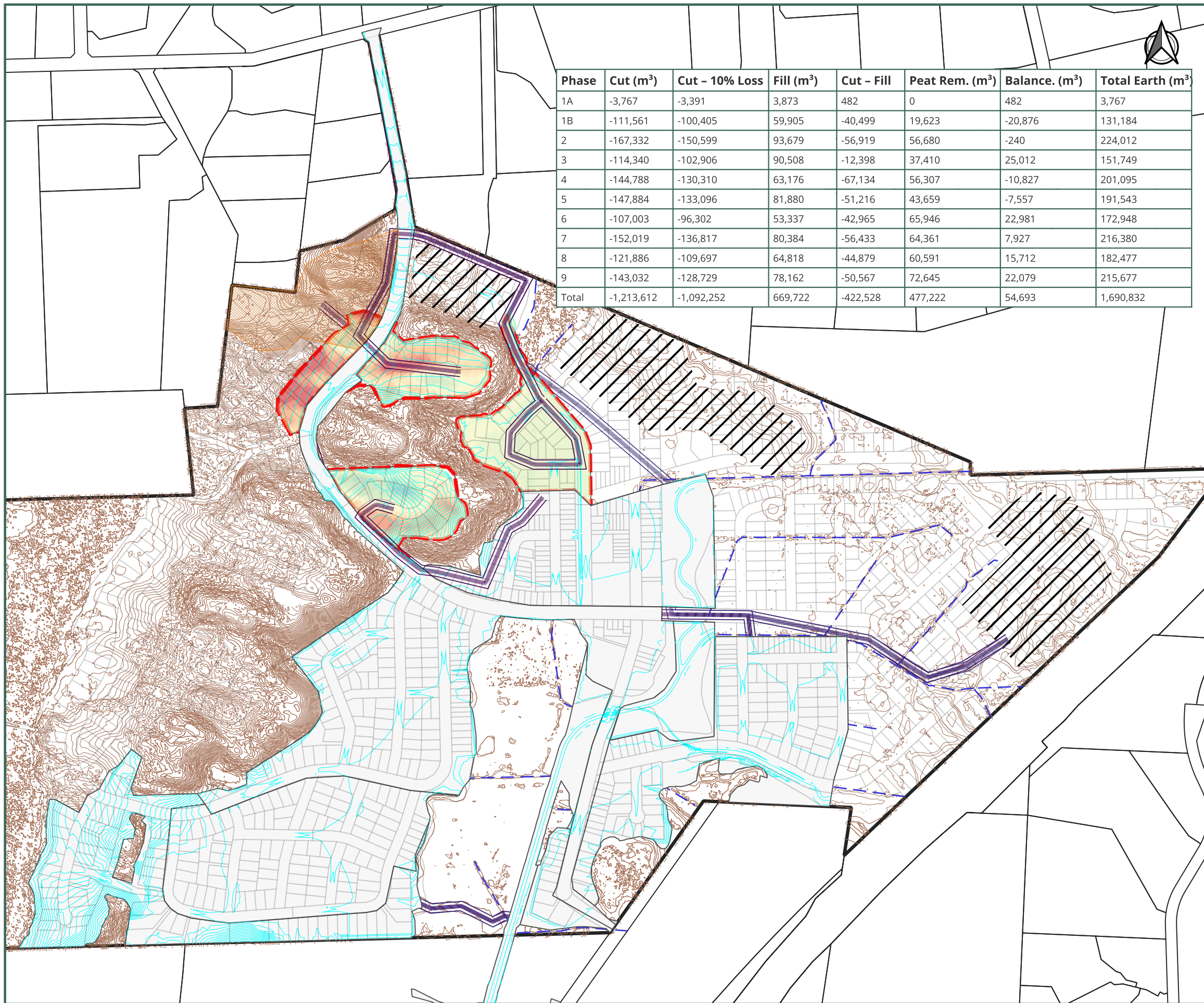
DESIGNED BY	JJH
DRAWN BY	JJH
APPROVED BY	PT

This drawing contains data from other sources and has been prepared for a specific site and event. Landlink Limited does not accept any liability for its accuracy, content or unauthorised use.

DATE 2026-03-13

SCALE Refer Scale Bar

2911-PH3-EW-213



Phase	Cut (m³)	Cut - 10% Loss	Fill (m³)	Cut - Fill	Peat Rem. (m³)	Balance. (m³)	Total Earth (m³)
1A	-3,767	-3,391	3,873	482	0	482	3,767
1B	-111,561	-100,405	59,905	-40,499	19,623	-20,876	131,184
2	-167,332	-150,599	93,679	-56,919	56,680	-240	224,012
3	-114,340	-102,906	90,508	-12,398	37,410	25,012	151,749
4	-144,788	-130,310	63,176	-67,134	56,307	-10,827	201,095
5	-147,884	-133,096	81,880	-51,216	43,659	-7,557	191,543
6	-107,003	-96,302	53,337	-42,965	65,946	22,981	172,948
7	-152,019	-136,817	80,384	-56,433	64,361	7,927	216,380
8	-121,886	-109,697	64,818	-44,879	60,591	15,712	182,477
9	-143,032	-128,729	78,162	-50,567	72,645	22,079	215,677
Total	-1,213,612	-1,092,252	669,722	-422,528	477,222	54,693	1,690,832

0 100 200 300 400 500 m

LEGEND

- Existing watercourse
- EX contours (1.0 m)
- Proposed contours (1.0 m)
- HILL ZONE
- Haul Road

Phase 4 - Cut Fill Depth (m)

- 19.3 - -9
- 9 - -8
- 8 - -7
- 7 - -6
- 6 - -5
- 5 - -4
- 4 - -3
- 3 - -2
- 2 - -1
- 1 - 0
- 0 - 1
- 1 - 2
- 2 - 3
- 3 - 4
- 4 - 5
- 5 - 6
- 6 - 7

Notes:

1. Bulk earthworks are intended to moderate landform to provide buildable platforms, generally 0-5% grades (subject to detailed design).
2. In steeper areas works aim to achieve practical buildable platforms with transitions resolved using batters or low retaining where required.
3. Earthworks boundaries and staging are indicative; sequencing to follow certified CEMP and ESCP.
4. Levels in NZVD2016; contours indicative and subject to detailed design.
5. Concept grading surface verifies bulk earthworks feasibility; final levels to be refined at detailed design (including stormwater modelling) to confirm flood-free platforms with appropriate freeboard (KCDC standards).
6. Cut and fill volumes are approximate and subject to construction survey.

Bulk Earthworks Plan
Phase 4

Waikanae North Developments Ltd

Waikanae North
Peka Peka, Kapiti Coast

© Landlink Limited 2025



1 Ngaio Road, Waikanae 5036 + contactus@Landlink.nz

This drawing contains data from other sources and has been prepared for a specific site and event. Landlink Limited does not accept any liability for its accuracy, content or unauthorised use.

STAGE	PH4
REVISION	C
REVISION DETAILS	Issued For Consent

DESIGNED BY	JJH
DRAWN BY	JJH
APPROVED BY	PT

DATE 2026-03-13

SCALE Refer Scale Bar

2911-PH4-EW-214