



**WINSTONE**  
AGGREGATES

Part  
C

Boffa Miskell



# Hunua Quarry Development

Substantive Application  
Part C – Wildlife Act Permit  
Prepared for Winstone Aggregates

Updated on 15 April 2026  
supersedes the 30 March 2026 version



Boffa Miskell is proudly a  
Toitū net carbonzero certified consultancy

## Document Quality Assurance

<p><b>This document may be cited as:</b> Boffa Miskell Limited 2026. <i>Hunua Quarry Development: Substantive Application</i>. Report prepared by Boffa Miskell Limited for Winstone Aggregates.</p>				
<p><b>For any information regarding this report please contact:</b> Nick Pollard   Planning   Partner   <a href="mailto:nick.pollard@boffamiskell.co.nz">nick.pollard@boffamiskell.co.nz</a></p>				
Revision /version:	Issue date:	Prepared by:	Description:	Reviewed by:
Final v1	15/04/2026	Nick Pollard Planner   Partner	Updated report issued to EPA	<b>Ken Gimblett</b> Planner   Partner
<p><b>Approved for issue:</b> Ken Gimblett   Planner   Partner   15 April 2026</p>				
<p><b>Release and Reliance</b> This report has been prepared by Boffa Miskell Limited on the instructions of our Client, in accordance with the agreed scope of work. If it is intended to support an application under the Fast-track Approvals Act 2024, it may be relied upon by the Expert Panel and relevant administering agencies for the purposes of assessing the application. While Boffa Miskell Limited has exercised due care in preparing this report, it does not accept liability for any use of the report beyond its intended purpose. Where information has been supplied by the Client or obtained from external sources, it has been assumed to be accurate unless otherwise stated.</p>				

File name & Project number: [Hunua Quarry FTAA\_Part C\_Wildlife Act Permit\_20260415.docx] BM250767

Template revision: 20251110 0000

# CONTENTS

C1.	Introduction	1
	C1.1 Statement of Qualifications and Relevant Experience	1
C2.	Proposed Activity and Purpose	2
	C2.1 Purpose of the Proposed Activity and Actions Involving Protected Wildlife – cl 2(1)(a) and (b)	2
	C2.2 Location of Activity – cl 2(1)(b) and (h)	2
	C2.3 Duration	4
C3.	Assessment of Activity and its Impacts against the purpose of the Wildlife Act – cl 2(1)(c)	4
	C3.1 Habitat and Known or Predicted Protected Species – cl 2(1)(d) and numbers likely to be impacted	5
	C3.2 Impacts on threatened, data-deficient, and at risk-wildlife species (as defined in the New Zealand Threat Classification System) – cl 2(1)(e)	6
	C3.3 How will the proposed methods achieve best practice? – cl 2(1)(f)	7
C4.	Methods for safely holding, efficiently and humanely catch, hold or kill animals and identify relevant ethical processes cl 2(1)(g)	8
	C4.1 State the location or locations where the activity will be carried out with GIS coordinates if possible (cl. 2 (1)(h))	8
	C4.2 State whether authorisation is sought to temporarily hold or relocate wildlife cl.2(1)(i)	9
	C4.3 Expert Assessment of Effects of the Proposed Activity and proposed measures to minimise, offset or compensate – cl 2(1)(j) and (k) and (o)	9
C5.	Statutory Assessment	10
	C5.1 Offences and Criminal Charges under the Wildlife Act 1953 – cl 2(1)(l) and (m)	10
	C5.2 Consultation cl.2(1)(n)	10
	C5.3 Expert assessment – Cl 2(1)(o)	11
C6.	Fast Track Approvals Act 2024	12
	C6.1 Section 85 of the FTAA	12
	C6.2 Discretionary Criteria	13

C7.	Assessment of the Proposal against the Fast-track Approvals Act Decision-Making Framework	13
C7.1	The Purpose of the FTAA	13
C7.2	Approvals Sought under the Wildlife Act 1953	14
C7.3	Information and Requirements Relating to the Protected Wildlife that is to be covered by the Approval	14
C8.	Conclusion	14
C9.	Proposed Conditions	15

## Appendices

Appendix C10.1: Site Plan for Lizard Release

## C1. Introduction

1. Winstone Aggregates (“**Winstone**”), a division of Fletcher Concrete and Infrastructure Limited are making an Application under the Fast Track Approvals Act 2024 (‘FTAA’) to authorise the development of the Hunua Quarry to increase annual quarry production to a peak of 5.4 million tonnes of aggregate, and to enable the continued extraction of aggregate for a further 80 years.
2. Section s 42(4)(h) of the Fast-track Approvals Act 2024 (“**FTAA**” or “**the Act**”) sets out that a substantive application for wildlife approval that would otherwise be sought under the Wildlife Act 1953 must include the information required by clause 2(1) of Schedule 7 of the FTAA. This section of the substantive application (Part C) outlines the information necessary to obtain approvals for a wildlife approval. Winstone seek authorisation the FTAA for activities related to the Hunua Quarry Development that would typically require an application under section 53 of the Wildlife Act 1953.
3. The Project will require the clearance of native vegetation in identified areas tied to project stages. Protected wildlife has been previously identified at the site and Winstone has previously obtained permits to capture, handle and relocate wildlife for earlier development stages. An existing wildlife approval 53619-FAU applies to the earlier Symonds Hill Pit consents, which expire in November 2026.
4. The wildlife approval sought is for the capture, handling and relocation of native lizards including elegant gecko (*Naultinus elegans*) from within the Hunua Quarry for the purpose of minimising injury and mortality to protected lizards during vegetation removal. The proposed activity will be restricted to the land at Hunua Quarry, Papakura, where the lizards will be captured and to land where the lizards will be released into appropriate locations in the Hunua Ranges Regional Park.
5. This application is supported by the Ecology Assessment prepared by Boffa Miskell, dated 30 March 2026 (see **Appendix B12.4.5**) (“**Ecological Assessment**”) and the Lizard Management Plan prepared by Boffa Miskell dated 30 March 2026 (see **Appendix 12.8.4**) (“**Lizard Management Plan**”). Conditions are also recommended and included at **Appendix B12.7**, with those related to the Wildlife Permit attached below in Section C.9. This assessment addresses the required information for an approval described in s 43(3)(h) (wildlife approval) clause 2(1) and has been prepared by Boffa Miskell in accordance with cl 2(1) of Schedule 7 of the FTAA (refer Appendix B12.4.5). For completeness, this assessment provides a summary of the information set out in that document, along with the statutory tests.

### C1.1 Statement of Qualifications and Relevant Experience

6. **Nick Pollard** is a Partner and Planner at Boffa Miskell with over 20 years’ in resource management planning in Aotearoa New Zealand. He holds a Bachelor of Science, Masters degree in Planning and a Masters degree in Urban Design from the University of Auckland, which were obtained in 1997, 2006 and 2010 respectively. Nick has been a full member of the New Zealand Planning Institute since 2014 and completed Making Good Decisions in 2022 and is an accredited Hearings Commissioner. Nick has a depth of experience working with the Auckland Unitary Plan, preparing chapters for the proposed plan, and through the hearings phase, and more recently assisting the Auckland Council’s Planning and Resource Consents Department with the intensification plan change both Plan Change 78 (withdrawn) and Plan Change 120,

being the most significant change to the plan since its adoption. Nick's role with PC120 is confined to the urban chapters related to the residential and business zones. He has prepared complex resource consent applications for development, and appeared by the Environment Court for Direct Referral applications.

7. This report draws on the information contained in Appendix B12.4.5 Ecological Assessment and relies upon the advice and experience of Victoria Smith (avifauna and bats), Katherine Muchna and Alice Dee (Herpetology and terrestrial fauna).
8. This report has been prepared and reviewed in accordance with the Environment Court's Code of Conduct for Expert Witnesses, contained in the Environment Court Practice Note 2023.

## C2. Proposed Activity and Purpose

9. The proposed activity will require the clearance of native vegetation as part of the Hunua Quarry Development, and a population of elegant gecko (*Naultinus elegans*) was discovered in the area of the earlier Hunua Quarry expansion footprint in 2007. In 2011, a Lizard Relocation Plan (LRP) was prepared to guide lizard management within the site. A total of 152 elegant geckos were relocated between 2011 and 2025.
10. No native lizards or Hochstetter's frogs were detected on the Site during the 2025-26 surveys, despite the presence of potential habitat.
11. This Wildlife Approval application is for the capture and relocation of Native Lizards (including elegant gecko) and other potentially present native lizard species from the proposed quarry development area to an adjacent area that will be subject to habitat enhancement, pest management and which will be legally protected in perpetuity from further clearance.

### C2.1 Purpose of the Proposed Activity and Actions Involving Protected Wildlife – cl 2(1)(a) and (b)

12. Winstone seeks a wildlife approval to carry out the following on private land:
  - a. **capture, temporarily hold and relocate** lizards prior to site clearance works for the purpose of protecting animals within the works footprint; and
  - b. **Incidentally kill lizards**, recognising that trapping/handling activities carry some risk of injury or mortality, and that any remaining undetected lizards may also incidentally be killed during site works.

### C2.2 Location of Activity – cl 2(1)(b) and (h)

13. The Project will be carried out over an 80-year period requiring native vegetation clearance at particular stages. The project area, is generally known as Hunua Quarry, at 489 Hunua Road, South Auckland other associated parcels comprise the Site<sup>1</sup>. This

---

<sup>1</sup> **489 Hunua Road** (Lot 2 Deposited Plan 55769 (RT NA8A/243), Part Allotment 79 Parish of Hunua (RT NA576/104), Part Allotment 79 Parish of Hunua (RT NA576/105), Allotment 345 Hunua Parish (RT NA28A/1311)); **499 Hunua Road** (Lot 1 Deposited Plan 105061 (RT NA57D/1355)); **0 Middleton Road** (was paper road)(Section 1 Survey Office Plan 417727 (484772)); **165 Middleton Road** (Lot 5 DP

is privately owned land depicted in Appendix B12.2 Location Plans, Figure 1, the diagram below shows the proposed Quarry Footprint and area where clearance will occur. The quarry is located at **-37.086851, 175.001521 (NZTM)**. Records of title for this land are contained in Appendix A6.9.

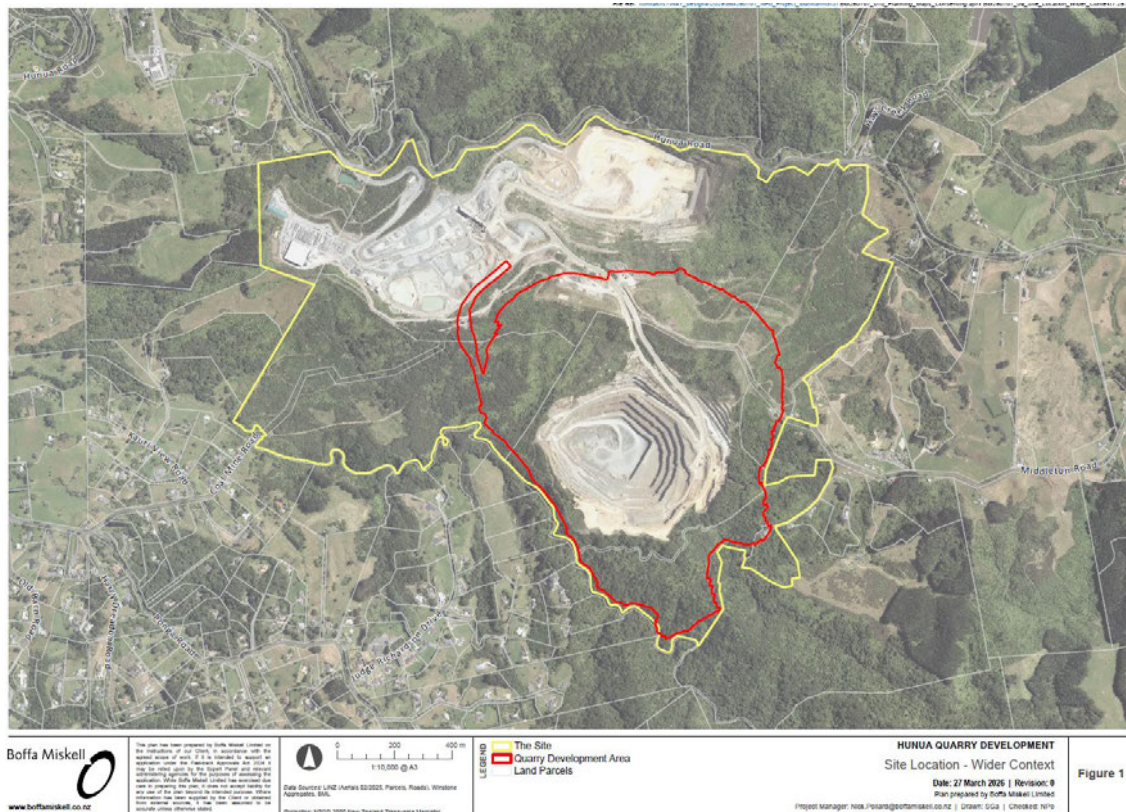


Figure 1 Site location map showing the Site extent, and the Quarry Development Area (refer Appendix B12.2b Location Plans, Figures 1 and 2)

14. The areas where the clearance of native vegetation is proposed is shown in figure 2. Figure 2 includes the extent of the Quarry Development area with mapped areas of vegetation that will be affected by the various quarry development stages.
15. The proposed lizard release site is in Hunua Ranges Regional Park<sup>2</sup> and the Applicant is in ongoing discussions with Auckland Council regarding the location of a suitable site in the Park. The exact release location is not known at present, but the coordinates of **-37.038873, 175.170135 (NZTM)** are a central point in the park. **Appendix 1** includes a map depicting the wider Hunua Ranges Regional Park as a release site and includes an indicator where elegant gecko have been recorded, with the exact location to be confirmed.

152736 (RT NA91A/948)); **193 Middleton Road** (Lot 1 Deposited Plan 120541 (NA69D/366)); **255 Middleton Road** (Lot 1 Deposited Plan 60065 (NA18D/1181)); 101 Coalmine Road (Allotment 38 Parish of Hunua (NA575/139)). (Refer Records of Title Appendix A6.9 of the Application)

<sup>2</sup> To be confirmed with Auckland Council through ongoing compensation liaison.

## C2.3 Duration

16. Winstone seeks that the duration of the wildlife approval be 10 years to ensure that the term of the approval adequately covers the initial stages of the operation. Winstone intends to apply for a variation to extend the term of the approval as required beyond the initial 10-year term.
17. The term of the resource consents applied is in perpetuity for land use consent e.g. for vegetation clearance and earthworks under the district plan provision of the AUP(OP); and, for AUP(OP) regional resource consents a 35 year term is sought.

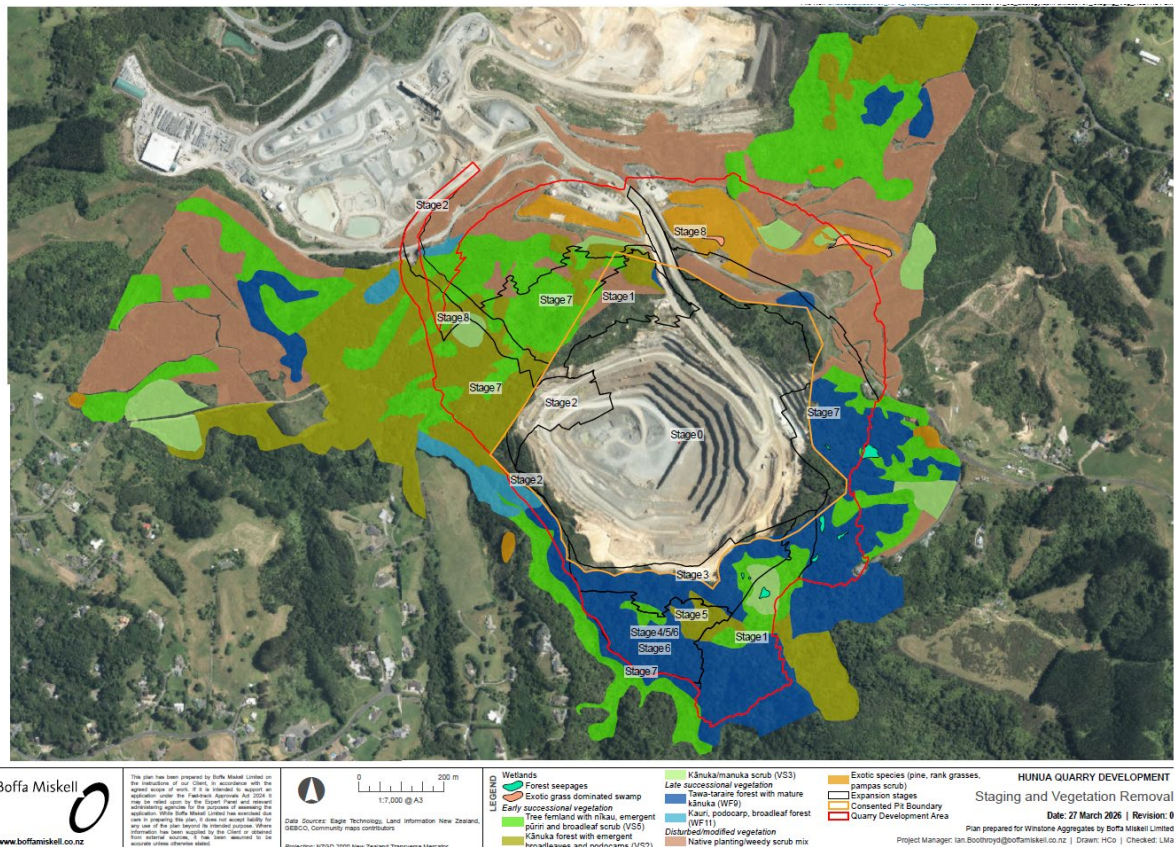


Figure 2: Site location showing the Quarry Development area (red line) with mapped areas of vegetation that will be affected by the various quarry development stages (refer Figure 33 in the Appendix B12.4.5)

## C3. Assessment of Activity and its Impacts against the purpose of the Wildlife Act – cl 2(1)(c)

18. The specific actions proposed involving protected wildlife are (refer to the Lizard Management Plan sections 5.3 and 5.4 for additional detail):
  - a. capturing lizards using pitfall / funnel traps and by hand;
  - b. handling lizards to identify species, measure and photograph them;

- c. temporarily holding and relocating lizards into a prepared release site; and
  - d. incidental killing of lizards that could not be captured.
19. Catching and handing actions are to occur within the Site, lizards are to be released to a suitable transfer area on another part of the same Site. Impacts on wildlife are summarised below in Section C3.2.
20. The Wildlife Act protects animals classified as wildlife and regulates how people interact with them. The application is relevant to the Wildlife Act because it proposes vegetation removal activities that provide habitat to protected wildlife species, and these species may be killed or injured if unmanaged. These species are identified as native lizards, and the proposed actions are required to protect and mitigate the impact of the loss of lizard habitat resulting from the clearance of vegetation on the lizard population.

### C3.1 Habitat and Known or Predicted Protected Species – cl 2(1)(d) and numbers likely to be impacted

21. As described above, a population of elegant gecko (*Naultinus elegans*) was discovered at the earlier approved Hunua Quarry Stage 5 expansion footprint in 2007. Between 2011 and 2025, 152 geckos were salvaged. Initially, lizards were translocated to a release site within the wider quarry area in the south-east corner of Friedman Block paddock and an area to the north of the Hay Paddock. Later translocations moved lizards to a release site on Tiritiri Matangi Island.
22. No native lizards were detected on the Site during the 2025-26 surveys, despite the presence of potential habitat (Figure 2). Lizard survey methods included:
- a. Multiple Arboreal Artificial Cover Object (**ACO**) were deployed at four locations in transects of 10. The transects were located in four forest types (Transect 1: mature kānuka, Transect 2: mixed kānuka and podocarp, Transect 3: broadleaf, and Transect 4: mature gulley species (pūriri, rimu and kānuka)). This survey was intended to target forest gecko, as elegant gecko do not occupy arboreal ACOs). Refuges were left in-situ for at least eight weeks to allow lizards to become habituated to the covers. These were checked on the 23/02/2026 during warm, sunny weather, no gecko were detected. Large numbers of Auckland tree weta (*Hemideina thoracica*) and cave weta (*Pachyrhamma longipes*), banded tunnelweb spider (*Hexathele hochstetteri*) and cockroaches inhabited the ACOs.
  - b. Ground-based double layered ACO's were deployed over five transects of 10 ACOs. Ground based ACOs were located in tree fern-dominated regenerating forest; mature kanuka with fern-dominated understory; taraire, tawa, podocarp forest; bracken and rank grass; and native early succession broadleaf / weedy scrub mix. This survey method was designed to detect copper and ornate skink. These were checked on 23 February 2026 during warm, sunny weather and no native lizards were detected. Two adult plague skink we observed but not captured.
  - c. Manual searching methods were used to search for lizards under refugia (logs, artificial materials, sunny track sides) was carried out opportunistically across the Site. During warm sunny weather three adult and one juvenile skink were

seen and not caught. Copper skink and plague skink look similar and share the same habitat. However, based on open sun-basking behaviour and rapid, direct escape manoeuvres paired with anatomical features (long, slim tail) they are likely plague skink. One non-native juvenile plague skink was caught on 23 February 2026.

23. Nocturnal visual searches (spotlighting) were carried out over one night to supplement existing arboreal gecko records.
24. Native herpetofauna records within 20 km of the Site are identified in Table 1 below reproduced from the Ecological Assessment and Lizard Management Plan.

Species	Threat classification (Hitchmough et al., 2025, Melzer et al., 2022)	Habitat (Van Winkel et al., 2018)	Most recent record	Number of records
<b>Elegant gecko</b> ( <i>Naultinus elegans</i> )	At Risk – Declining  Regionally Declining	Gumland, scrubland and forested habitats	2021	5
<b>Forest gecko</b> ( <i>Mokopirirakau granulatus</i> )	At Risk – Declining  Regionally Declining	Forests, scrubland and herbfields across a broad range of elevations.	2018	3
<b>Pacific gecko</b> ( <i>Dactylocnemis pacificus</i> )	Not Threatened  Regionally Declining	Coastal and lowland habitats including boulder beaches, scrubland, flaxland and forest.	>20 yrs	1
<b>Copper skink</b> ( <i>Oligosoma aeneum</i> )	At Risk – Declining  Regionally Declining	Lowland habitats such as coastal vegetation, grassland, scrub and forest. Refuges include leaf litter, rocks, logs, flax and rank grass.	2021	44
<b>Ornate skink</b> ( <i>Oligosoma ornatum</i> )	At Risk – Declining  Regionally Declining	Forests, scrublands and grassland habitats.	>20 yrs	1

### C3.2 Impacts on threatened, data-deficient, and at risk-wildlife species (as defined in the New Zealand Threat Classification System) – cl 2(1)(e)

25. The Ecological Assessment at Section 3.2.2 sets out information about native lizard and frog taxa present, or potentially present, at the Site drawn from previous survey work

including the identification of the relevant threat classification of these species being 'At Risk – Declining Regionally Declining', recording that:

- a. Elegant gecko (*Naultinus elegans*) are confirmed as present within the Site
  - b. Copper skink (*Oligosoma aeneum*), Ornate skink (*O. ornatum*) forest gecko (*Mokopirirakau granulatus*) and Pacific gecko (*Dactylocnemis pacificus*) may be present based on habitats and distribution records but have not been detected previously.
  - c. Hochstetter's frog (*Leiopelma hochstetteri*) were not found to be present and have not been detected previously
26. The Ecological Assessment confirms at Section 5.2.3 that whilst the Site provides habitat for roosting, foraging and nesting for a variety of Not Threatened and Introduced avifauna species commonly found in the Auckland region and across the country. Few At Risk species have been observed within the Site, with the majority being observed outside the Project footprint.
27. The Ecological Assessment at Section 8.0 details and assesses the ecological effects of habitat loss through vegetation clearance (Ecological Assessment section 8.2.1), effects on connectivity, buffering and edge effects (Ecological Assessment section 8.2.2), and the effects of the Project on terrestrial fauna in relation to lizards (Ecological Assessment section 8.3), summarised as follows:
- a. In the absence of mitigation and specific fauna management, forest clearance will result in the likely mortality of lizards and the loss / modification of habitat, particularly of elegant gecko.
  - b. Loss of habitat will be offset/ compensated by revegetation to reinstate forest habitat over the medium to long term, and pest control to improve the viability of existing lizard populations in remnant forest areas, and over time, in adjoining revegetation sites.
  - c. Potential sub-lethal effects include ongoing disturbance from elevated noise, dust, light and vibration levels, associated with quarry activities which can impact lizard health and breeding success.

### C3.3 How will the proposed methods achieve best practice? – cl 2(1)(f)

28. The specific actions proposed involving protected wildlife are:
- a. capturing lizards using pitfall / funnel traps and by hand;
  - b. handling lizards to identify species, measure and photograph them;
  - c. temporarily holding and relocating lizards into a prepared release site; and
  - d. incidental killing of lizards that could not be captured.
29. Catching and handling actions are to occur within the Site, lizards are to be released to a suitable transfer area on another part of the same Site.
30. The Draft Lizard Management Plan has been developed to follow best practice standards provided in Department of Conservation guidance documents.

31. These include DOC guidance on:
  - a. methods to survey and capture lizards (DOC 2012);
  - b. follow the 'Principles for Lizard Salvage Translocations' (DOC 2019); and
  - c. 'Guidance for lizard habitat clearance' (DOC 2023).
32. As is identified in Part B Resource Consents and AEE and Appendix B12.5.14 Hunua Quarry Expansion Resource Report it is not possible for the quarry development area to avoid all potential lizard habitat. As set out in the Lizard Management Plan at Section 6.1 this supports, in this instance, the rationale for lizard salvage as a management tool.

#### C4. Methods for safely holding, efficiently and humanely catch, hold or kill animals and identify relevant ethical processes cl 2(1)(g)

33. The Draft Lizard Management Plan details the methods for safe, efficient and humane capture, holding and relocation at Section 6.4.2.2. in line with best practice. The Draft Lizard Management Plan include measures to ensure that Lizards will be transported to the release site or captive holding facility and will not be held for more than 8-hours.
34. Contingency measures are detailed at Section 6.4.4 of the Lizard Management Plan. Risk and animal ethics considerations are detailed at Section 6.4.2.4 of the Lizard Management Plan.

#### C4.1 State the location or locations where the activity will be carried out with GIS coordinates if possible (cl. 2 (1)(h))

35. Lizards will be captured from the area within the quarry footprint prior to vegetation clearance.
36. As noted above:
  - a. Lizard capture is required at Hunua Quarry, at 489 Hunua Road, Hunua within the proposed Quarry Footprint where clearance will occur . The quarry is located at **-37.086851, 175.001521 (NZTM)**.



#### C4.2 State whether authorisation is sought to temporarily hold or relocate wildlife cl.2(1)(i)

37. Lizards will be transported to the release site or captive holding facility and will not be held for more than 8 hours.

#### C4.3 Expert Assessment of Effects of the Proposed Activity and proposed measures to minimise, offset or compensate – cl 2(1)(j) and (k) and (o)

38. In accordance with cl 2(1)(o) of Schedule 7 to the FTAA, ecological advice has been obtained from Boffa Miskell and is contained in the Ecological Assessment and Lizard Management Plan.
39. The Ecological Assessment, in accordance with cl2(1)(j), identifies the potential wildlife effects, positive and adverse, of the proposed activity, including effects on the target species, other indigenous species, and the site's ecosystems.
40. The Ecological Assessment in line with cl.2(1)(k) states what methods will be used to avoid and minimise those effects and any offsetting or compensation proposed to address unmitigated effects.
41. The ecological assessment applies the effects management hierarchy at Section 9. The Ecological Assessment identifies, at Section 9.3, measures to avoid adverse effects as far as possible by design and the avoidance of tree felling in the bird nesting season or if bat roosting is detected.
42. Section 9.4 of the Ecological Assessment identifies the measures to minimise and remedy adverse effects on lizards:
  - a. The capture and relocation of lizards to a suitable, protected release site has been an appropriate and effective tool to minimise the likelihood of injury and/or mortality utilised over the last 20-years.
  - b. Any surveys or salvage of lizards may only be carried out between the months of September – April (inclusive), with weekly overnight average temperatures of at least 12 degrees.
  - c. Lizard management will follow the key principles for lizard salvage and translocation in New Zealand (DOC, 2019).
  - d. The release areas being located within the Site with release site enhancement, and post-release monitoring will ensure that best practice standards are met.

## C5. Statutory Assessment

### C5.1 Offences and Criminal Charges under the Wildlife Act 1953 – cl 2(1)(l) and (m)

43. The applicant including its company directors, trustee or partner or anyone else involved with the application has not been convicted of a criminal offence under the Wildlife Act 1953 and there are no charges under the Wildlife Act 1953 pending before a Court relevant to Winstone.

### C5.2 Consultation cl.2(1)(n)

44. Hui have been held through January and February 2026. Refer to the Iwi Engagement Report at Appendix A6.7 for further details. However matters raised by hapū or iwi on the application specific to impacts lizards / elegant gecko, are included in table 1 below:

Table 1: Matters related to wildlife during iwi workshops held in January and February 2026.

	Questions / Issues raised	Discipline / Topic	Raised by	Comments from Technical experts	How will this be addressed
Ngāti Te Ata refer to "Iwi workshop issues register - Ngāti Te Ata" dated 11 February 2026 appended to Appendix A6.7 Iwi Engagement Report					
10	Lizard salvage and management plan.	Ecology	KF	121 elegant geckos relocated to Tiritiri Matangi. Lizard Salvage Plan in place since 2011.	Provide salvage management documentation.
Ngāti Tamaoho refer to the "Meeting notes - Workshop with Ngāti Tamaoho – 21 January 2026" appended to Appendix A6.7 Iwi Engagement Report					
14	Succession of lizard relocation to Tiritiri Matangi	Winstone responded	Confirm	Email to confirm	
15	Iwi development of Hunua pest management strategy that looks at gecko relocation within the Hunua.  Time period – good opportunities adaptive	Winstone	Discuss with Trent. Future partnership opportunities with Ngāti Tamaoho.	WA	Ongoing

	management within this space.				
21	Ngāti Tamaoho and cultural monitoring approach: including aspects pekapeka, (bat) mokomoko <sup>3</sup> , fish monitoring and relocation, endemic species.	Winstone / Ngāti Tamaoho	Addressed in the management plan and ongoing relationship	Ongoing	Ongoing

45. Other engagement has included the New Zealand Fish and Game Council, New Zealand Game Animal Council, New Zealand Conservation Authority, and the Auckland Conservation Board. The purpose of this consultation was to determine whether these parties considered themselves to be affected. The details of the engagement is set out in Section 5.4 of the Engagement Report refer Appendix A6.8 . The New Zealand Game Animal Council, noted that the Hunua Ranges are a valued hunting area in the Auckland Region and confirmed in response to the information provided that given the proposal does not substantially impact hunting activities or game animals, no further consultation was required. The other parties requested additional detailed information on the Project that has been provided.

### C5.3 Expert assessment – Cl 2(1)(o)

46. The Ecological Assessment and Lizard Management Plan have been prepared by suitably qualified and experienced with their relevant qualifications set out in the respective documents. These experts have also contributed to the recommended conditions that relate wildlife and include below in Section C.9. These documents are complete and provide the necessary written expert views, advice and opinions the applicant has obtained concerning the Project. The Ecological Assessment at Section 9.4.1.2 concludes:

*“With avoidance, minimisation and remedy through salvage and relocation there is no residual adverse effect on the local lizard fauna population to be managed. Loss of lizard habitat is compensated through revegetation and pest control and is anticipated to achieve and positive outcome for lizards that outweighs adverse effects within the term of the consent.”*

<sup>3</sup> Mokomoko means ‘lizard, skink, gecko - a general term’. (refer Te Aka <https://maoridictionary.co.nz/> as viewed on 28 March 2026)

## C6. Fast Track Approvals Act 2024

47. In considering whether to grant the approvals sought in this application, the Panel must meet the requirements of s 81 of the FTAA, which includes applying the specific decision-making clauses in Schedule 7, clauses 5 and 6.
48. Approvals relating to permits ordinarily sought under the Wildlife Act 1953 Clause 5 of Schedule 7 to the FTAA outlines that when considering an application for wildlife approvals and setting conditions, the Panel must take into account the following:
  - a. the purpose of this Act; and
  - b. the purpose of the [Wildlife Act 1953](#) and the effects of the project on the protected wildlife that is to be covered by the approval; and
  - c. information and requirements relating to the protected wildlife that is to be covered by the approval (including, as the case may be, in the New Zealand Threat Classification System or any relevant international conservation agreement);
49. The Panel must give the greatest weight to the purpose of the FTAA.
50. Clause 6 of Schedule 7 relates to the imposition of conditions for a wildlife approval. The Panel may set any conditions on a Wildlife approval that the Panel considers necessary to manage effects of the activity on protected wildlife, in setting the conditions the Panel must:
  - a. Consider whether the condition would avoid, minimise or remedy any impacts on the protected Wildlife that is to be covered by the approval; and
  - b. Where more than minor residual impacts on protected Wildlife cannot be avoided, minimised, or remedied, ensure they are offset or compensated for where possible and appropriate; and
  - c. Take into account, as the case may be, the NZTCS or any relevant international conservation agreement that may apply in respect of the protected wildlife that is to be covered by the approval.

### C6.1 Section 85 of the FTAA

51. Section 85 of the FTAA provides a list of circumstances where a Panel either must (pursuant to subclauses (1) and (2)) or may (pursuant to subclause (3)) decline approval.
52. These tests are an addition to the usual decision-making framework for Wildlife permits under the Wildlife Act 1953 set out above. Pursuant to s 81(2)(f) of the FTAA, the Panel may decline an approval only in accordance with s 85 of the FTAA.

#### C6.1.1 Mandatory Criteria

53. As relevant to the application for a Wildlife permit, s 85 requires that an application must be declined if:
  - a. It is for an ineligible activity.

- b. The Panel considers that granting the approval would breach obligations relating to Treaty settlements and recognised customary rights.
  - c. None of the matters in ss85 (1)(c)-(h) or s85(2) apply to permits under Schedule 6.
54. Therefore, none of the mandatory criteria for declining an application for a Wildlife permit under s 85 are met:
- a. The application is not for an ineligible activity, as demonstrated by Appendix A2.4 to the Substantive Application Overview.
  - b. Granting the approval would not breach obligations relating to Treaty settlements and recognised customary rights. Those obligations are addressed in detail in both the Iwi Consultation Report and in the memoranda of comment from Iwi appended to the Iwi Consultation Report, as well as in Section C5.2 above. None of those obligations would be breached by granting the approvals.

## C6.2 Discretionary Criteria

55. A Panel may also decline an approval if it forms the view that:
- a. The activity or activities for which the approval is sought would have one or more adverse impacts; and
  - b. Those adverse impacts are sufficiently significant to be out of proportion to the project's regional or national benefits that the Panel has considered, even after taking into account any conditions that the Panel may set in relation to those adverse impacts, and any conditions or modifications that the applicant may agree to or propose to avoid, remedy, mitigate, offset, or compensate for those adverse impacts.
56. In subsections (3) and (4), adverse impact means any matter considered by the Panel under section 81(2) that weighs against granting the approval. The effects of the permit sought by Winstone in this case, do not engage this section and do not warrant declining the application.

## C7. Assessment of the Proposal against the Fast-track Approvals Act Decision-Making Framework

### C7.1 The Purpose of the FTAA

57. The purpose of the of the FTAA is listed at section 3:

*The purpose of this Act is to facilitate the delivery of infrastructure and development projects with significant regional or national benefits.*

58. The approval of the Wildlife Act Permit to allow the following specific actions proposed involving protected wildlife are:
  - a. capturing lizards using pitfall / funnel traps and by hand;
  - b. handling lizards to identify species, measure and photograph them;
  - c. holding and relocating lizards into a prepared release site; and
  - d. incidental killing of lizards that could not be captured.
59. All catching and handling actions are to occur within the Site.
60. Through these actions the applicant will be able to implement the Project and minimise injury and mortality to protected lizards during vegetation removal. These actions are necessary to enable the efficient and effective implementation of the project while avoiding, remedying and mitigation the actual and potential effects of the Project and enable it to contribute to delivering the identified national and regional benefits of the Project.

## C7.2 Approvals Sought under the Wildlife Act 1953

61. The Wildlife Act protects animals classed as wildlife and controls how people interact with wildlife. The application is relevant to the Wildlife Act because it proposes vegetation removal activities that provide habitat to protected wildlife species, and these species may be killed or injured if unmanaged.

## C7.3 Information and Requirements Relating to the Protected Wildlife that is to be covered by the Approval

62. The information and requirements relating to protected wildlife is summarised in this report, the Ecological Assessment and Lizard Management Plan. These address the matters listed in the FTAA Schedule 7 cl 2(1)(a) – (o).

## C8. Conclusion

63. It is concluded that this report including the conditions, the Ecological Assessment and Lizard Management Plan satisfy the necessary requirements of Section s 42(4)(h) of the FTAA that requires a substantive application for wildlife approval that would otherwise be sought under the Wildlife Act 1953 includes the information required by clause 2(1) of Schedule 7 of the FTAA.
64. Subject to further input from the Administering Agencies and the other parties identified at Section 5.2 of this report, sufficient information has been provided relating to the approval of this Wildlife Act Permit under the FTAA to allow for:
65. Winstone to hold wildlife approval at the Hunua Quarry Site for an initial 10-year duration to:
  - a. **capture, temporarily hold and relocate** lizards prior to site clearance works for the purpose of protecting animals within the works footprint; and

- b. **incidentally kill** lizards, recognising that trapping / handling activities carry some risk of injury or mortality, and that any remaining undetected lizards may also incidentally be killed during site works.

## C9. Proposed Conditions

66. The following draft conditions are proposed:

### **Wildlife Permit - Authorised Activity**

1. All works relating to lizard fauna, including capture, handling, marking and relocation must occur in accordance with the Lizard Management Plan prepared by Boffa Miskell dated March 2026 and submitted with the application.
2. The wildlife approval is for the capture, handling, and release of elegant gecko (*Naultinus elegans*), copper skink (*Oligosoma aeneum*), ornate skink (*O. ornatum*), forest gecko (*Mokopirirakau granulatus*) and Pacific gecko (*Dactylocnemis pacificus*), provided that best efforts are taken to avoid incidental deaths in accordance with the Lizard Management Plan.
3. The incidental killing of native lizards listed in (2) above, is authorised, provided that best efforts are taken to avoid incidental deaths in accordance with the Lizard Management Plan.
4. This wildlife approval is valid for 10 years from the date of approval.

### **Wildlife Permit - Lizard Capture and Handling**

5. Lizards must only be handled by those people named in the Lizard Management Plan, or by others under the direct supervision of a Suitably Qualified Environmental Practitioner.
6. Lizard capture, handling and relocation must only be undertaken between 1 October and 30 April when lizards are most active.
7. Capture and handling of lizards must involve only techniques that minimise the risk of infection or injury to the animal and must follow those described in the Herpetofauna inventory and monitoring toolbox <http://www.doc.govt.nz/our-work/biodiversity-inventory-and-monitoring/herpetofauna/>
8. The DOC Operations Manager for Auckland must be contacted immediately (TBC contact details) for further advice if lizard species other than those listed in (2) above are located within the clearance area or within the release site.

### **Wildlife Permit – Death of wildlife associated with salvage activities**

9. If any lizards should die during the approved activities of catch, transfer or liberation, the Approval Holder must:
  - (a) inform the Auckland DOC Operations Manager (TBC contact details) within 48 hours, chill the body if it can be delivered within 72 hours, or freeze the body if delivery will take longer than 72 hours; and

- (b) send the body to Massey University Wildlife Post Mortem Service for necropsy OR as otherwise advised by the Auckland DOC Operations Manager, along with details of the animal's history; and
- (c) pay for any costs incurred in investigation of the death of any lizard; and
- (d) if required by the DOC Operations Manager, cease the Authorised Activity for a period determined by the DOC Operations Manager.

### **Euthanasia**

10. If any lizards are found injured as part of the Authorised Activity, the Approval Holder must contact the Project Ecologist to get advice on management of the lizard. Injured lizard(s) may be euthanised on recommendation of the Project Herpetologist or a veterinarian.

### **Wildlife Permit – Reporting**

11. A report summarising the salvage and relocation results must be prepared and submitted to DOC [Auckland Office, TBC contact details] and [permissionshamilton@doc.govt.nz](mailto:permissionshamilton@doc.govt.nz) within 30 days from the completion date of the salvage. Specifically, this report will include:
- (a) Details and Results of lizard salvage and relocation work. Should native lizards be found, then the following will also be included in the report:
    - (i) Photos of lizard salvage methods utilised;
    - (ii) Photos of lizards captured (including photos of the salvage and relocation areas);
    - (iii) A map showing the location of lizard upon capture and upon release;
    - (iv) The species and number of any lizards detected, captured, and released, and
    - (v) The results of all surveys and monitoring.
  - (b) Descriptions of how lizard management activities outlined in the LMP were followed, including conditions detailed in the WAA permit and associated resource consent conditions;
  - (c) An Amphibian and Reptile Distribution Scheme (ARDS) card detailing information relating to captured lizards (also to be provided to [herpetofauna@doc.govt.nz](mailto:herpetofauna@doc.govt.nz)); and,
  - (d) A brief summary regarding the outcomes of the LMP, including any improvements/changes that should be implemented in future.

### **Wildlife Permit – Costs**

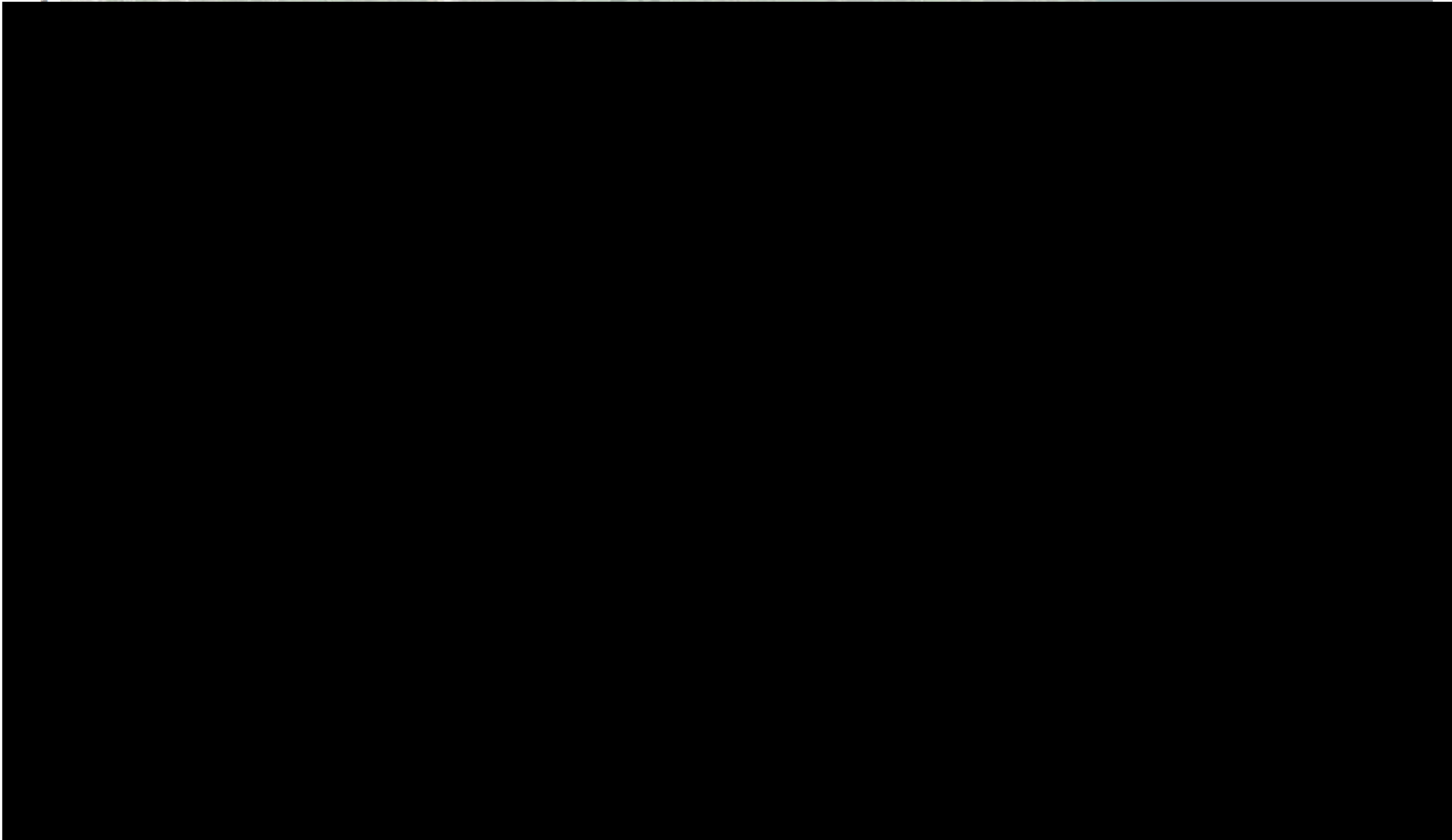
12. The Approval Holder must pay the Department of Conservation's standard charge-out rates for any staff time and mileage required to monitor compliance with this Approval and to investigate any alleged breaches of the terms and conditions of it.

**Employees, Contractors, or Agents**

13. Winstone Aggregate Limited is responsible for the acts and omissions of its employees, contractors and agents.
14. Winstone Aggregate Limited is liable under this Approval for any breach of its terms by employees, contractors, or agents, as if the breach were committed by Winstone Aggregate Limited.
15. Where obligations bind more than one person, these obligations bind those persons jointly and separately.



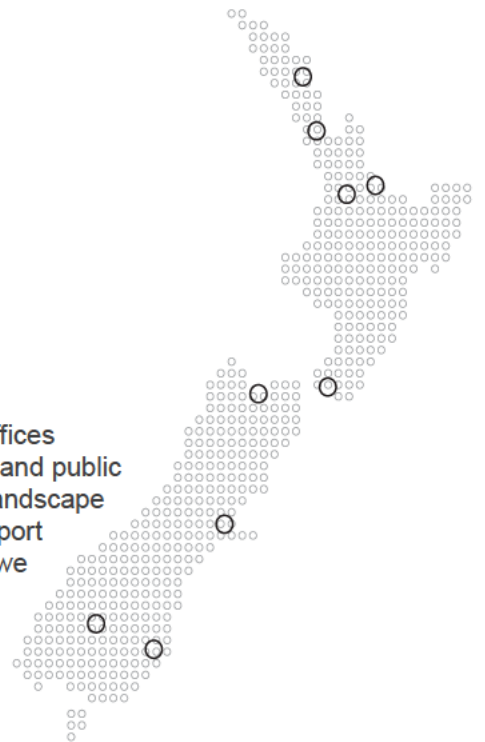
# Appendix C10.1: Site Plan for Lizard Release



**DRAFT**

## Together. Shaping Better Places.

Boffa Miskell is a leading New Zealand environmental consultancy with nine offices throughout Aotearoa. We work with a wide range of local, international private and public sector clients in the areas of planning, urban design, landscape architecture, landscape planning, ecology, biosecurity, Te Hīhiri (cultural advisory), engagement, transport advisory, climate change, graphics, and mapping. Over the past five decades we have built a reputation for creativity, professionalism, innovation, and excellence by understanding each project's interconnections with the wider environmental, social, cultural, and economic context.



[www.boffamiskell.co.nz](http://www.boffamiskell.co.nz)

<b>Whangarei</b>	<b>Auckland</b>	<b>Hamilton</b>	<b>Tauranga</b>	<b>Wellington</b>	<b>Nelson</b>	<b>Christchurch</b>	<b>Queenstown</b>	<b>Dunedin</b>
09 358 2526	09 358 2526	07 960 0006	07 571 5511	04 385 9315	03 548 8551	03 366 8891	03 441 1670	03 470 0460