



Appendix I

Integrated Transport Assessment

Part 3 of 3

Appendix 16: Off-site Transport Infrastructure

STAGED OFF-SITE TRANSPORT INFRASTRUCTURE PLAN

500 DWELLINGS (VIA BELL ROAD ONLY)

Condition Subclause a. :

- i. Transport Network Accountability Report
- ii. Bell Road / Parton Right Turn Bay

1,127 DWELLINGS + 5 HA INDUSTRIAL (VIA PEI ONLY)

Condition Subclause b. :

- i. Transport Network Accountability Report
- ii. PEI spite strip resolution
- iii. PEI westbound off-ramp left turn
- iv. PEI Eastbound off-ramp right lane extension
- v. PEI southern Wairakei South access signalised intersection

1,400 DWELLINGS + 8 HA INDUSTRIAL

Condition Subclause c. :

- i. In addition to the subclause a and b works...
- ii. Transport Network Accountability Report
- iii. Bell Road corridor widening
- iv. Bell Road / Te Puke Highway speed zone & signalised intersection
- v. Bell Road Rail crossing safety improvement

1,734 DWELLINGS + 8 HA INDUSTRIAL

Condition Subclause d. :

- i. In addition to the subclause a, b & c works...
- ii. Transport Network Accountability Report

2,500 DWELLINGS + 49 HA INDUSTRIAL

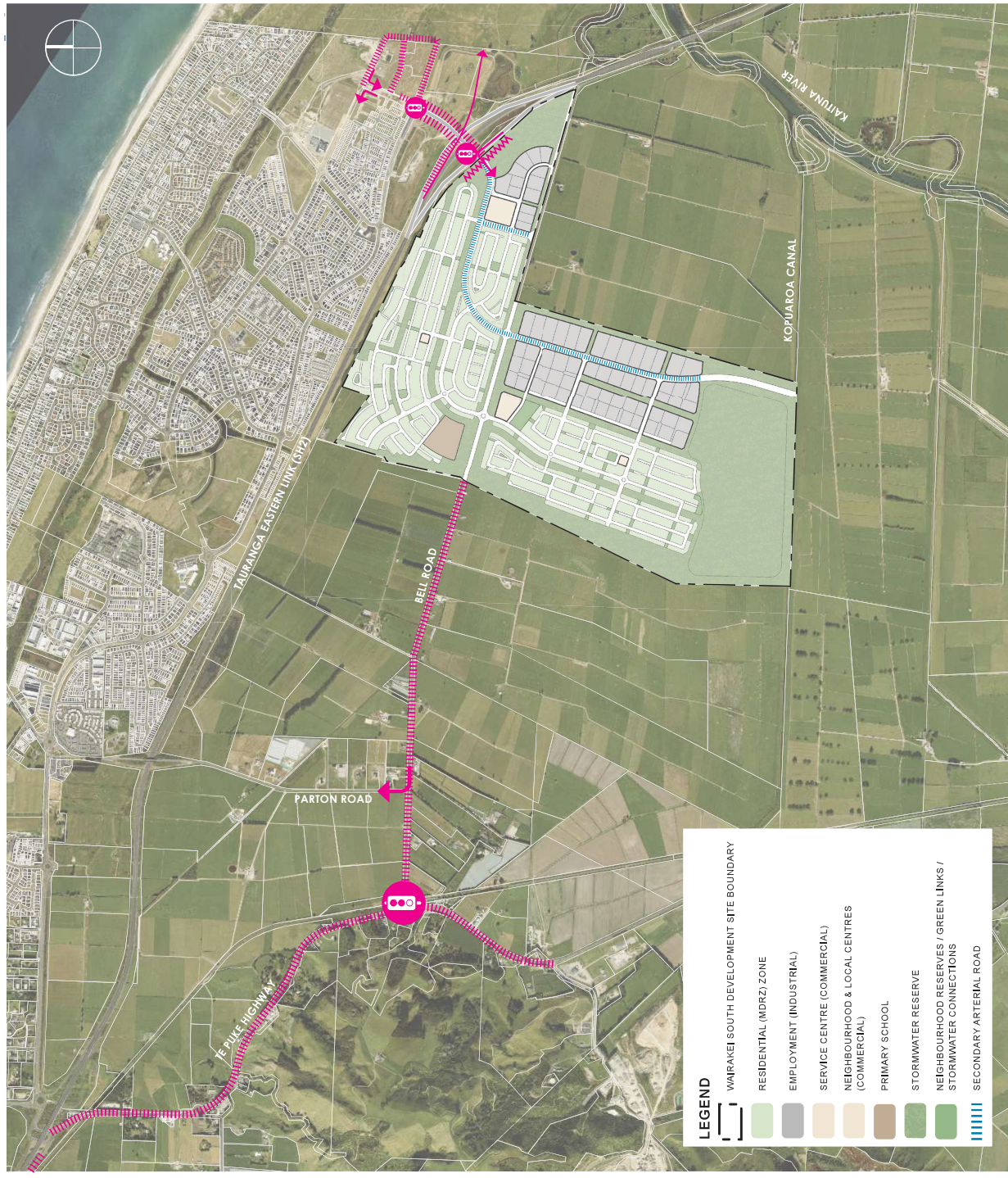
Condition Subclause e. :

- i. In addition to the subclause a, b, c & d works...
- ii. Transport Network Accountability Report
- iii. Domain Road interchange northbound on-ramp extension
- iv. An additional southbound lane on Sands Ave between Te Okuroa Drive and the south side of the PEI, incl. the pedestrian / cycle bridge
- v. An additional northbound right turn lane on Sands Ave between Te Okuroa Dr and the PEI northern intersection

2,750 DWELLINGS + 55 HA INDUSTRIAL

Condition Subclause f. :

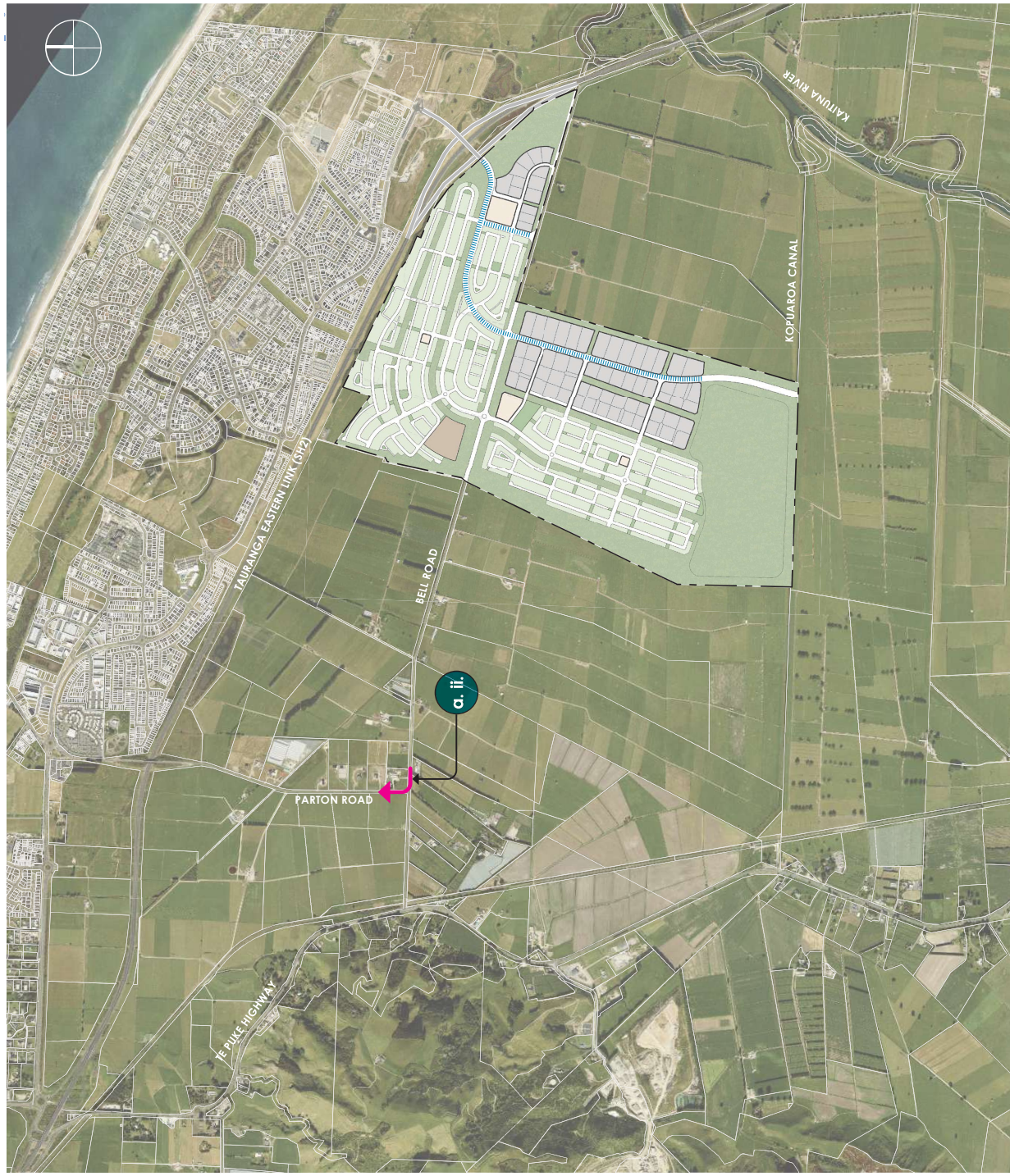
- i. In addition to the subclause a, b, c, d & e works...
- ii. Transport Network Accountability Report
- iii. PEI Bypass lane
- iv. Sands Ave / Te Okuroa Drive signalised double diamond phasing software upgrade
- v. Latham Drive connection to a Te Tumu western collector road link
- vi. 60m southbound lane on Sands Ave north approach top Te Okuroa Drive
- vii. Free left turns to/from Sands Ave at The Boulevard Intersection



500 DWELLINGS (VIA BELL ROAD ONLY)

Condition Subclause a. :

- i. Transport Network Accountability Report
- ii. Bell Road / Parton Right Turn Bay



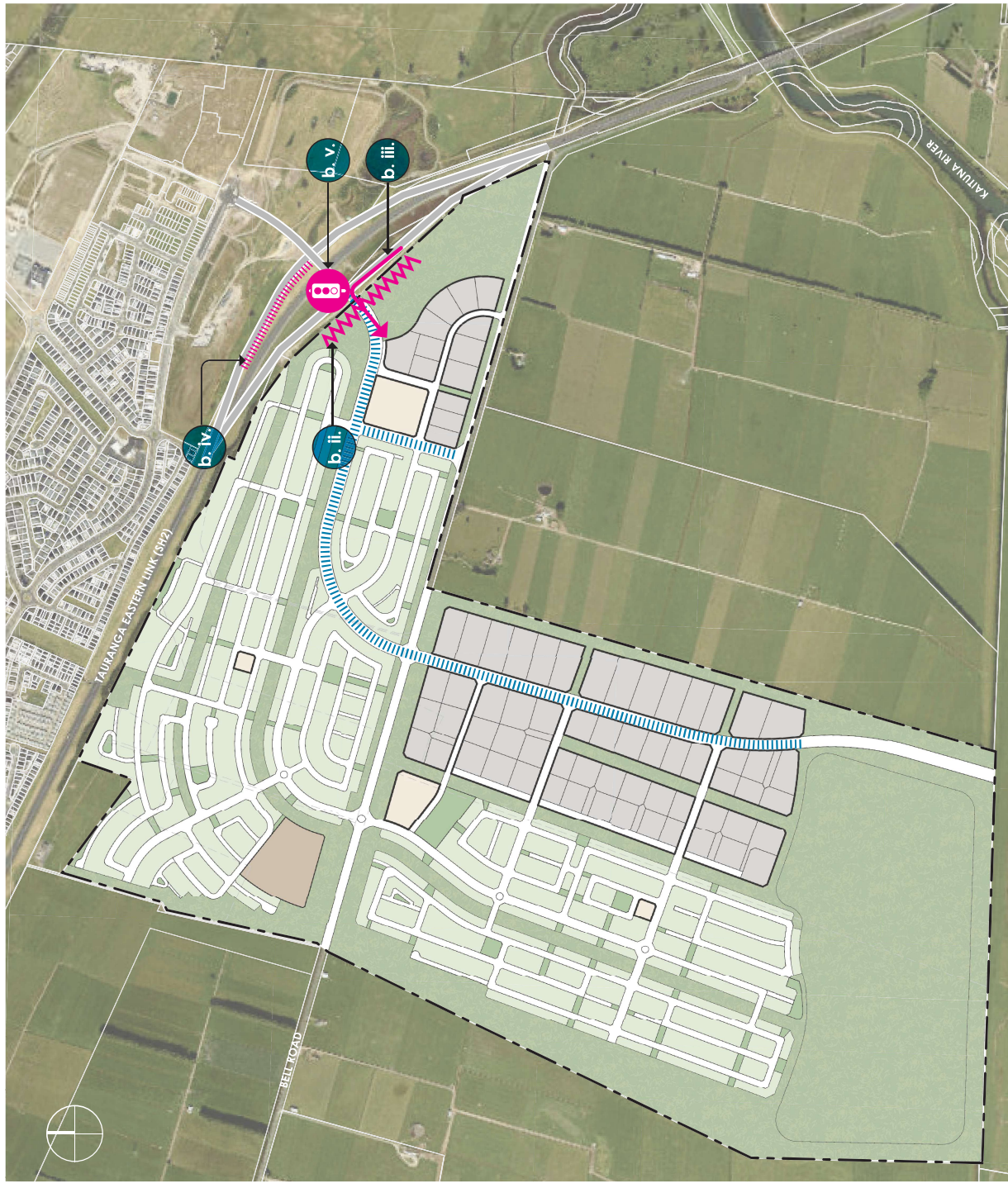
LEGEND

- WAIRAKEI SOUTH DEVELOPMENT SITE BOUNDARY
- RESIDENTIAL (MDRZ) ZONE
- EMPLOYMENT (INDUSTRIAL)
- SERVICE CENTRE (COMMERCIAL)
- NEIGHBOURHOOD & LOCAL CENTRES (COMMERCIAL)
- PRIMARY SCHOOL
- STORMWATER RESERVE
- NEIGHBOURHOOD RESERVES / GREEN LINKS / STORMWATER CONNECTIONS
- SECONDARY ARTERIAL ROAD

1,127 DWELLINGS + 5 HA INDUSTRIAL (VIA PEI ONLY)

Condition Subclause b.:

- i. Transport Network Accountability Report
- ii. PEI spite strip resolution
- iii. PEI westbound off-ramp left turn
- iv. PEI Eastbound off-ramp right lane extension
- v. PEI southern Wairakei South access signalised intersection



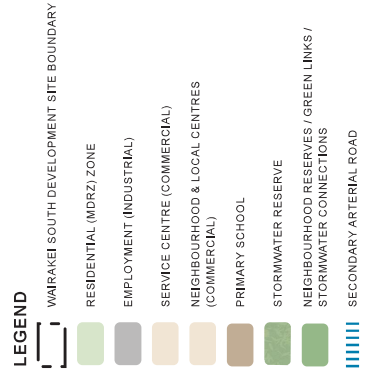
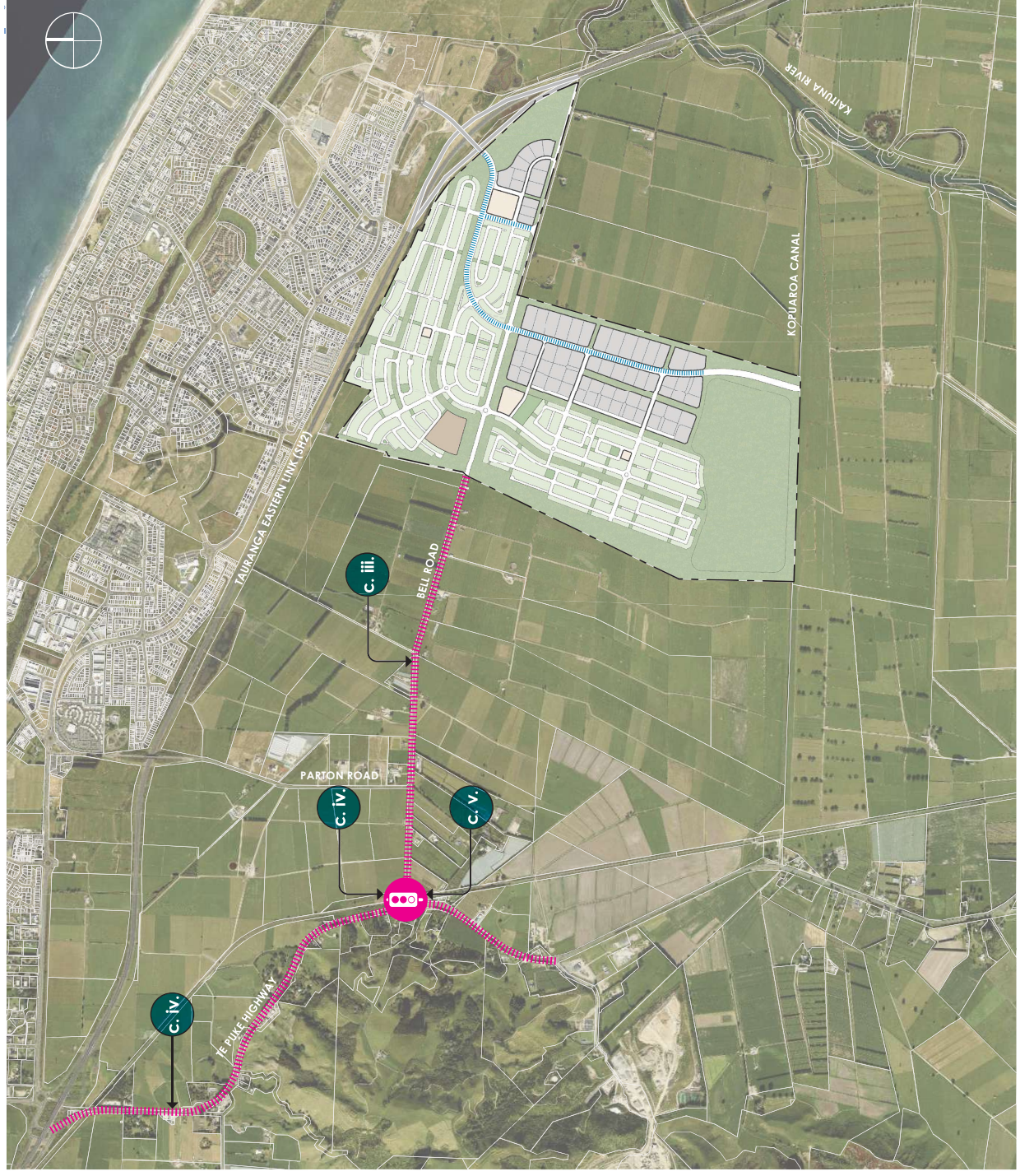
LEGEND

- WAIRAKEI SOUTH DEVELOPMENT SITE BOUNDARY
- RESIDENTIAL (MDRZ) ZONE
- EMPLOYMENT (INDUSTRIAL)
- SERVICE CENTRE (COMMERCIAL)
- NEIGHBOURHOOD & LOCAL CENTRES (COMMERCIAL)
- PRIMARY SCHOOL
- STORMWATER RESERVE
- NEIGHBOURHOOD RESERVES / GREEN LINKS / STORMWATER CONNECTIONS
- ||||| SECONDARY ARTERIAL ROAD

1,400 DWELLINGS + 8 HA INDUSTRIAL

Condition Subclause c. :

- i. In addition to the subclause a and b works...
- ii. Transport Network Accountability Report
- iii. Bell Road corridor widening
- iv. Bell Road / Te Puke Highway speed zone & signalised intersection
- v. Bell Road Rail crossing safety improvement



1,734 DWELLINGS + 8 HA INDUSTRIAL

Condition Subclause d. :

- i. In addition to the subclause a, b & c works...
- ii. Transport Network Accountability Report



LEGEND

- WAIRAKEI SOUTH DEVELOPMENT SITE BOUNDARY
- RESIDENTIAL (MDRZ) ZONE
- EMPLOYMENT (INDUSTRIAL)
- SERVICE CENTRE (COMMERCIAL)
- NEIGHBOURHOOD & LOCAL CENTRES (COMMERCIAL)
- PRIMARY SCHOOL
- STORMWATER RESERVE
- NEIGHBOURHOOD RESERVES / GREEN LINKS / STORMWATER CONNECTIONS
- SECONDARY ARTERIAL ROAD

STAGED OFF-SITE TRANSPORT INFRASTRUCTURE PLAN

2,500 DWELLINGS + 49 HA INDUSTRIAL

Condition Subclause e.:

- i. In addition to the subclause a, b, c & d works...
- ii. Transport Network Accountability Report
- iii. Domain Road interchange northbound on-ramp extension
- iv. An additional southbound lane on Sands Ave between Te Okuroa Drive and the south side of the PEI, incl. the pedestrian / cycle bridge
- v. An additional northbound right turn lane on Sands Ave between Te Okuroa Dr and the PEI northern intersection



LEGEND

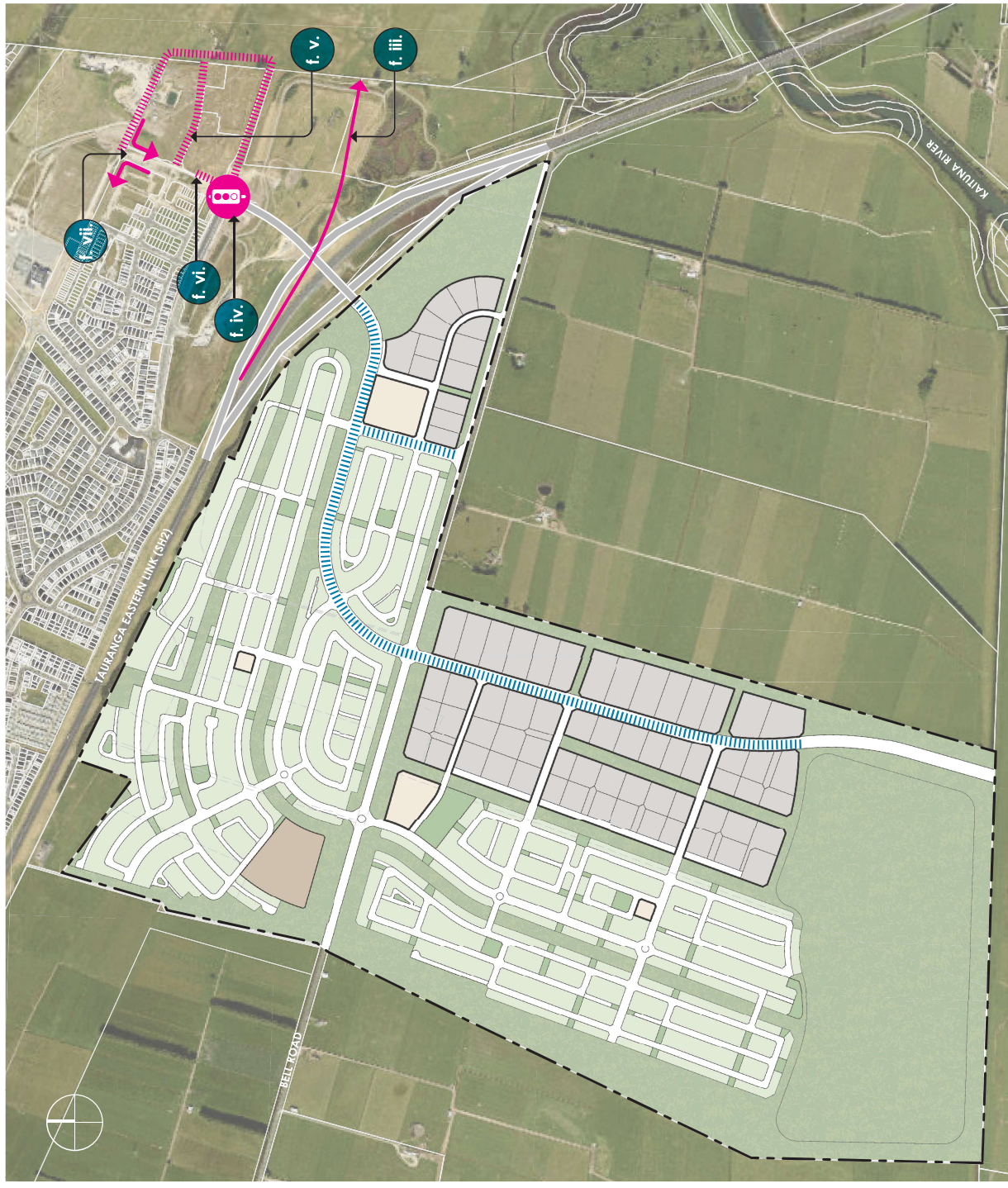
- WAIRAKEI SOUTH DEVELOPMENT SITE BOUNDARY
- RESIDENTIAL (MDRZ) ZONE
- EMPLOYMENT (INDUSTRIAL)
- SERVICE CENTRE (COMMERCIAL)
- NEIGHBOURHOOD & LOCAL CENTRES (COMMERCIAL)
- PRIMARY SCHOOL
- STORMWATER RESERVE
- NEIGHBOURHOOD RESERVES / GREEN LINKS / STORMWATER CONNECTIONS
- SECONDARY ARTERIAL ROAD

STAGED OFF-SITE TRANSPORT INFRASTRUCTURE PLAN

2,750 DWELLINGS + 55 HA INDUSTRIAL

Condition Subclause f.:

- i. In addition to the subclause a, b, c, d & e works...
- ii. Transport Network Accountability Report
- iii. PEI Bypass lane
- iv. Sands Ave / Te Okuroa Drive signalised double diamond phasing software upgrade
- v. Latham Drive connection to a Te Tumu western collector road link 60m southbound lane on Sands Ave north approach top Te Okuroa Drive
- vi. Free left turns to/from Sands Ave at The Boulevard Intersection

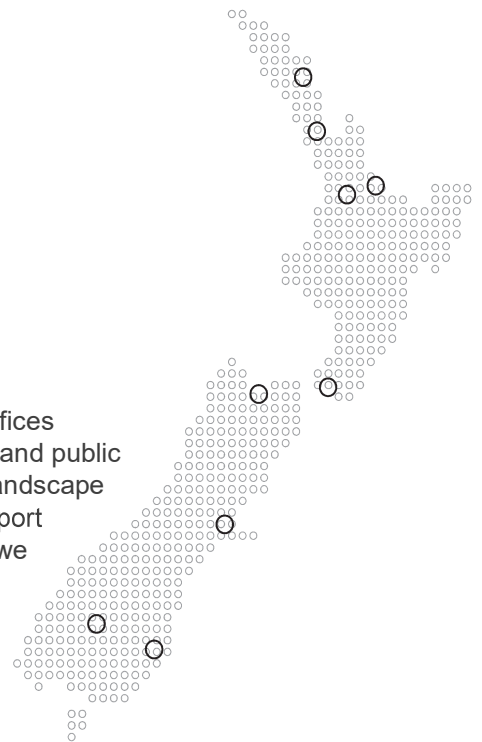


LEGEND

- Wairakei South Development Site Boundary
- Residential (MDRZ) Zone
- Employment (Industrial)
- Service Centre (Commercial)
- Neighbourhood & Local Centres (Commercial)
- Primary School
- Stormwater Reserve
- Neighbourhood Reserves / Green Links / Stormwater Connections
- Secondary Arterial Road

Together. Shaping Better Places.

Boffa Miskell is a leading New Zealand environmental consultancy with nine offices throughout Aotearoa. We work with a wide range of local, international private and public sector clients in the areas of planning, urban design, landscape architecture, landscape planning, ecology, biosecurity, Te Hīhiri (cultural advisory), engagement, transport advisory, climate change, graphics, and mapping. Over the past five decades we have built a reputation for creativity, professionalism, innovation, and excellence by understanding each project's interconnections with the wider environmental, social, cultural, and economic context.



www.boffamiskell.co.nz

Whangarei	Auckland	Hamilton	Tauranga	Wellington	Nelson	Christchurch	Queenstown	Dunedin
09 358 2526	09 358 2526	07 960 0006	07 571 5511	04 385 9315	03 548 8551	03 366 8891	03 441 1670	03 470 0460