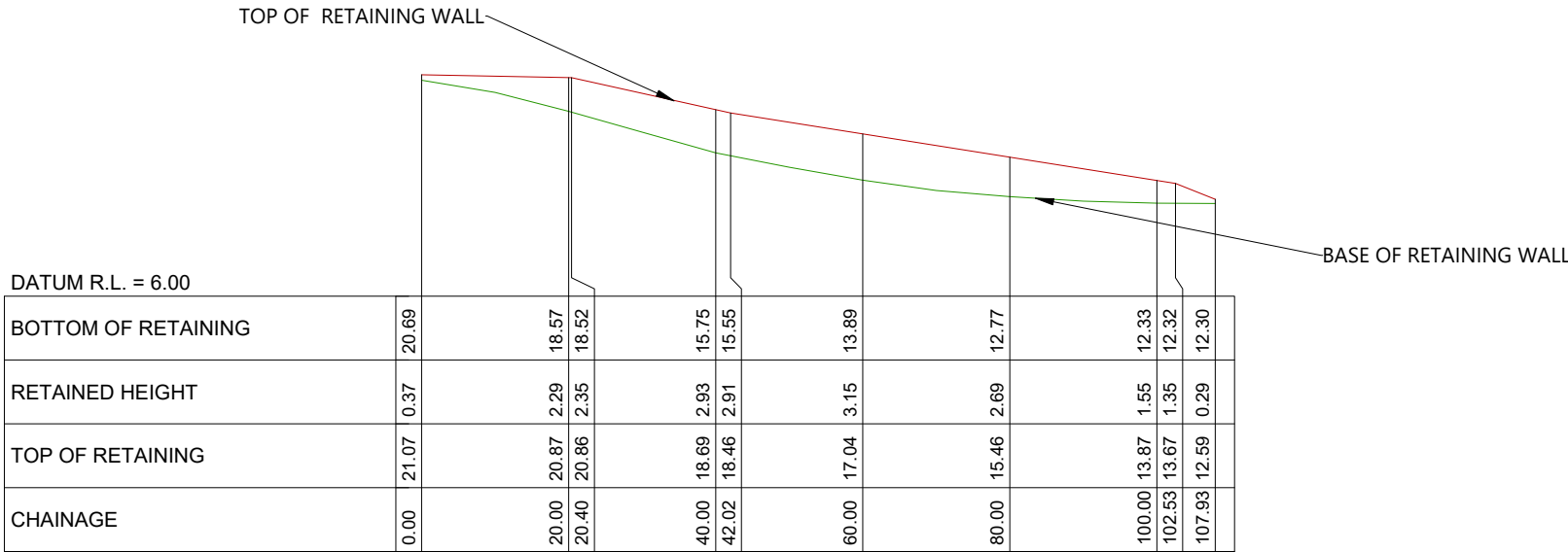


LEGEND	
BOTTOM OF WALL	
TOP OF WALL	
PROPOSED CONTOURS	
RW SUBSOIL DRAIN 100mm	



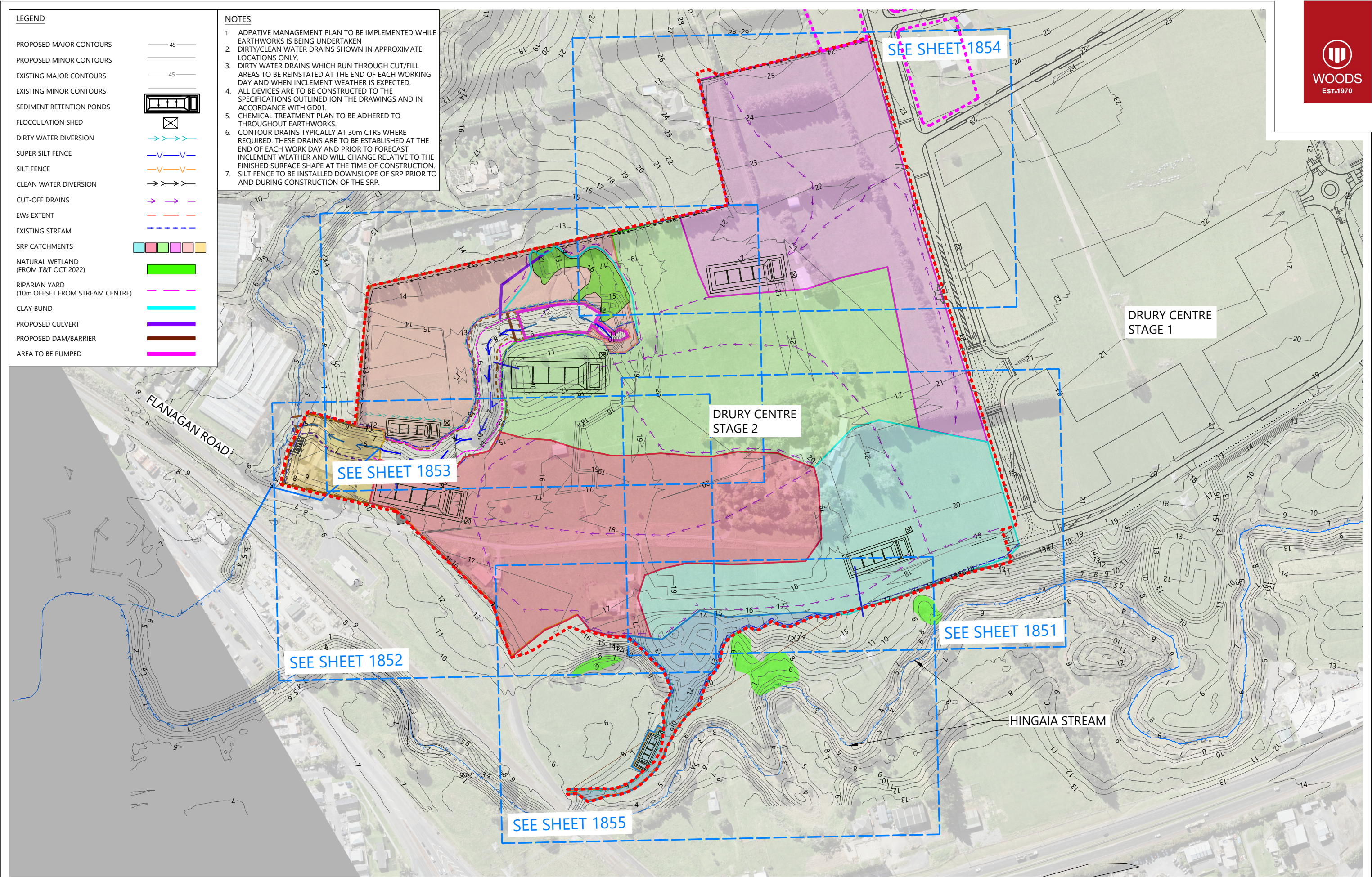
RETAINING WALL LONGITUDINAL SECTION

HORZ 1:1000 VERT 1:500

RETAINING WALL 1 - LONGITUDINAL SECTION

SCALE: 1:1000H 1:500V @A3

REVISION DETAILS		INT	DATE	SURVEYED			<div>BUILDING B, LEVEL 1 8 NUGENT ST, GRAFTON, AUCKLAND 1023 +64 9 308 9229 WOODS.CO.NZ</div> 	DRURY CENTRE					STATUS	FOR FAST TRACK CONSENT	REV
1	ISSUED FOR 99% SUBMISSION	MF-E	10/02/2025	DESIGNED	NS			SCALE	AS SHOWN		2				
2	ISSUED FOR FAST TRACK CONSENT	EW	21/02/2025	DRAWN	MF-E			COUNCIL	AUCKLAND COUNCIL						
				CHECKED	GW			DWG NO	P24-447-01-1400-EW						
				APPROVED	GW										



REVISION DETAILS		INT	DATE	SURVEYED	BJ
1	ISSUED FOR 90% DEISGN	GW	29/11/24	DESIGNED	NS
2	ISSUED FOR 99% SUBMISSION	MF-E	10/02/25	DRAWN	NS
3	ISSUED FOR FAST TRACK CONSENT	EW	21/02/25	CHECKED	GW
				APPROVED	GW



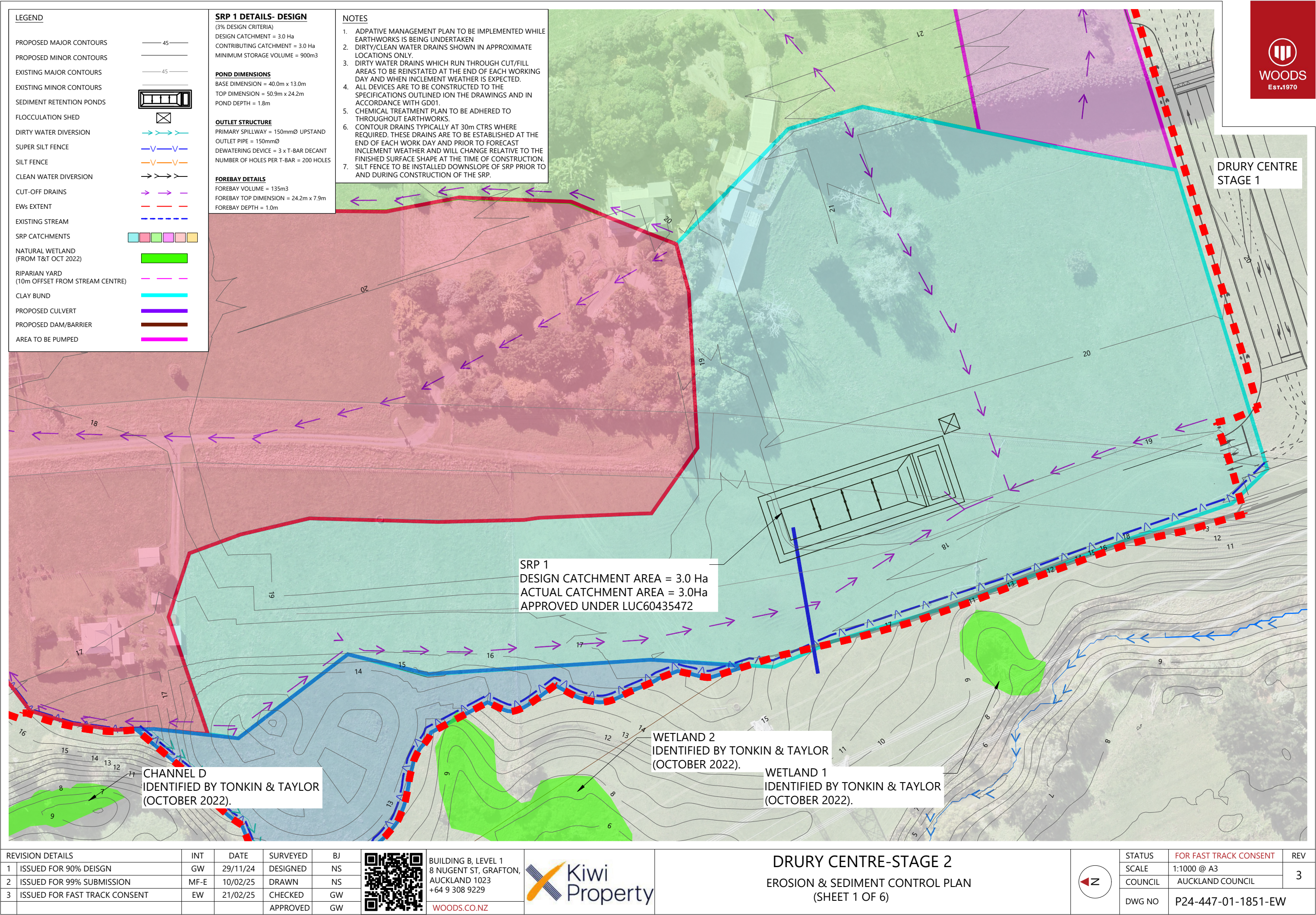
BUILDING B, LEVEL 1
8 NUGENT ST, GRAFTON,
AUCKLAND 1023
+64 9 308 9229
[WOODS.CO.NZ](https://www.woods.co.nz)



DRURY CENTRE-STAGE 2
OVERALL EROSION & SEDIMENT CONTROL PLAN



STATUS	FOR FAST TRACK CONSENT	REV
SCALE	1:3000 @ A3	3
COUNCIL	AUCKLAND COUNCIL	
DWG NO	P24-447-01-1850-EW	



DRURY CENTRE
STAGE 1

SRP 1
DESIGN CATCHMENT AREA = 3.0 Ha
ACTUAL CATCHMENT AREA = 3.0Ha
APPROVED UNDER LUC60435472

CHANNEL D
IDENTIFIED BY TONKIN & TAYLOR
(OCTOBER 2022).

WETLAND 2
IDENTIFIED BY TONKIN & TAYLOR
(OCTOBER 2022).

WETLAND 1
IDENTIFIED BY TONKIN & TAYLOR
(OCTOBER 2022).

REVISION DETAILS		INT	DATE	SURVEYED	BJ
1	ISSUED FOR 90% DEISGN	GW	29/11/24	DESIGNED	NS
2	ISSUED FOR 99% SUBMISSION	MF-E	10/02/25	DRAWN	NS
3	ISSUED FOR FAST TRACK CONSENT	EW	21/02/25	CHECKED	GW
				APPROVED	GW



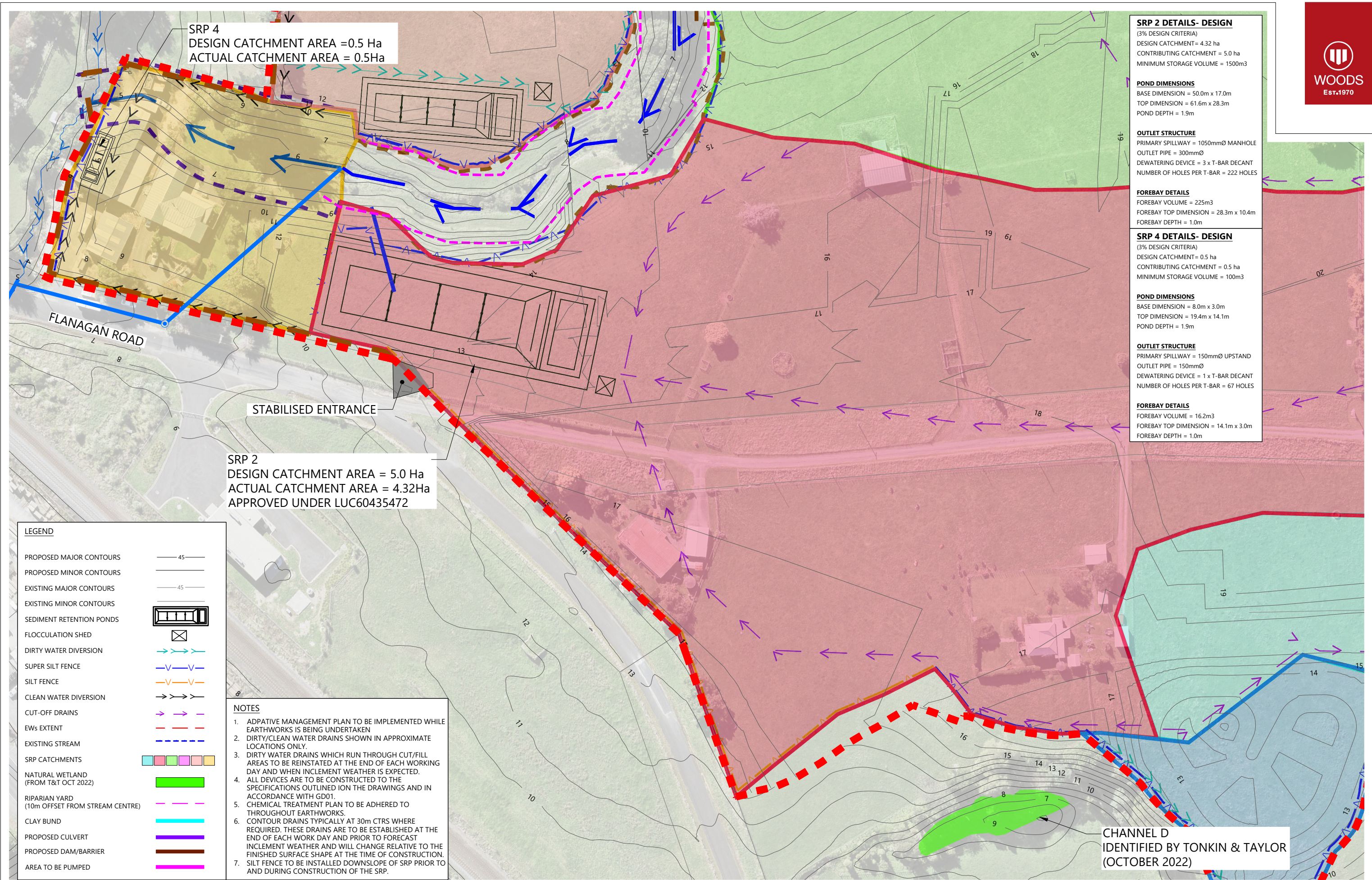
BUILDING B, LEVEL 1
8 NUGENT ST, GRAFTON,
AUCKLAND 1023
+64 9 308 9229
[WOODS.CO.NZ](https://www.woods.co.nz)



DRURY CENTRE-STAGE 2
EROSION & SEDIMENT CONTROL PLAN
(SHEET 1 OF 6)



STATUS	FOR FAST TRACK CONSENT	REV
SCALE	1:1000 @ A3	3
COUNCIL	AUCKLAND COUNCIL	
DWG NO	P24-447-01-1851-EW	



Plot Date: 10:51:32 am, 12 March 2025, ELAWA

File C:\1205\DATA\WP-AKL-APP-02\P24-447 - DRURY CENTRE - STAGE 2_2214002 DRAWINGS\01 ENG\P24-447-01-1850-EW_EROSION & SEDIMENT CONTROL PLANDWG

REVISION DETAILS					INT	DATE	SURVEYED	BJ
1	ISSUED FOR 90% DESIGN				GW	29/11/24	DESIGNED	NS
2	ISSUED FOR 99% SUBMISSION				MF-E	10/02/25	DRAWN	NS
3	ISSUED FOR FAST TRACK CONSENT				EW	21/02/25	CHECKED	GW
							APPROVED	GW



BUILDING B, LEVEL 1
8 NUGENT ST, GRAFTON,
AUCKLAND 1023
+64 9 308 9229
[WOODS.CO.NZ](https://www.woods.co.nz)



DRURY CENTRE-STAGE 2
EROSION & SEDIMENT CONTROL PLAN
(SHEET 2 OF 6)



STATUS	FOR FAST TRACK CONSENT	REV
SCALE	1:1000 @ A3	3
COUNCIL	AUCKLAND COUNCIL	
DWG NO	P24-447-01-1852-EW	

LEGEND

PROPOSED MAJOR CONTOURS

PROPOSED MINOR CONTOURS

EXISTING MAJOR CONTOURS

EXISTING MINOR CONTOURS

SEDIMENT RETENTION PONDS

FLOCCULATION SHED

DIRTY WATER DIVERSION

SUPER SILT FENCE

SILT FENCE

CLEAN WATER DIVERSION

CUT-OFF DRAINS

EWs EXTENT

EXISTING STREAM

SRP CATCHMENTS

NATURAL WETLAND
(FROM T&T OCT 2022)

RIPARIAN YARD
(10m OFFSET FROM STREAM CENTRE)

CLAY BUND

PROPOSED CULVERT

PROPOSED DAM/BARRIER

AREA TO BE PUMPED

45

45

SRP 3 DETAILS- DESIGN

(3% DESIGN CRITERIA)

DESIGN CATCHMENT= 4.8 ha

CONTRIBUTING CATCHMENT = 5.0ha

MINIMUM STORAGE VOLUME = 1500m3

POND DIMENSIONS

BASE DIMENSION = 50.0m x 17.0m

TOP DIMENSION = 61.6m x 28.3m

POND DEPTH = 1.9m

OUTLET STRUCTURE

PRIMARY SPILLWAY = 1050mmØ MANHOLE

OUTLET PIPE = 300mmØ

DEWATERING DEVICE = 3 x T-BAR DECANT

NUMBER OF HOLES PER T-BAR = 222 HOLES

FOREBAY DETAILS

FOREBAY VOLUME = 225m3

FOREBAY TOP DIMENSION = 28.3m x 10.4m

FOREBAY DEPTH = 1.0m

SRP 5 DETAILS- DESIGN

(3% DESIGN CRITERIA)

DESIGN CATCHMENT= 2.25 ha

CONTRIBUTING CATCHMENT = 2.25ha

MINIMUM STORAGE VOLUME = 675m3

POND DIMENSIONS

BASE DIMENSION = 35.6m x 12.0m

TOP DIMENSION = 47.0m x 23.3m

POND DEPTH = 1.9m

OUTLET STRUCTURE

PRIMARY SPILLWAY = 150mmØ UPSTAND

OUTLET PIPE = 150mmØ

DEWATERING DEVICE = 2 x T-BAR DECANT

NUMBER OF HOLES PER T-BAR = 150 HOLES

FOREBAY DETAILS

FOREBAY VOLUME = 122.4m3

FOREBAY TOP DIMENSION = 23.3m x 7.6m

FOREBAY DEPTH = 1.0m

- NOTES
1. ADPATIVE MANAGEMENT PLAN TO BE IMPLEMENTED WHILE EARTHWORKS IS BEING UNDERTAKEN

2. DIRTY/CLEAN WATER DRAINS SHOWN IN APPROXIMATE LOCATIONS ONLY.

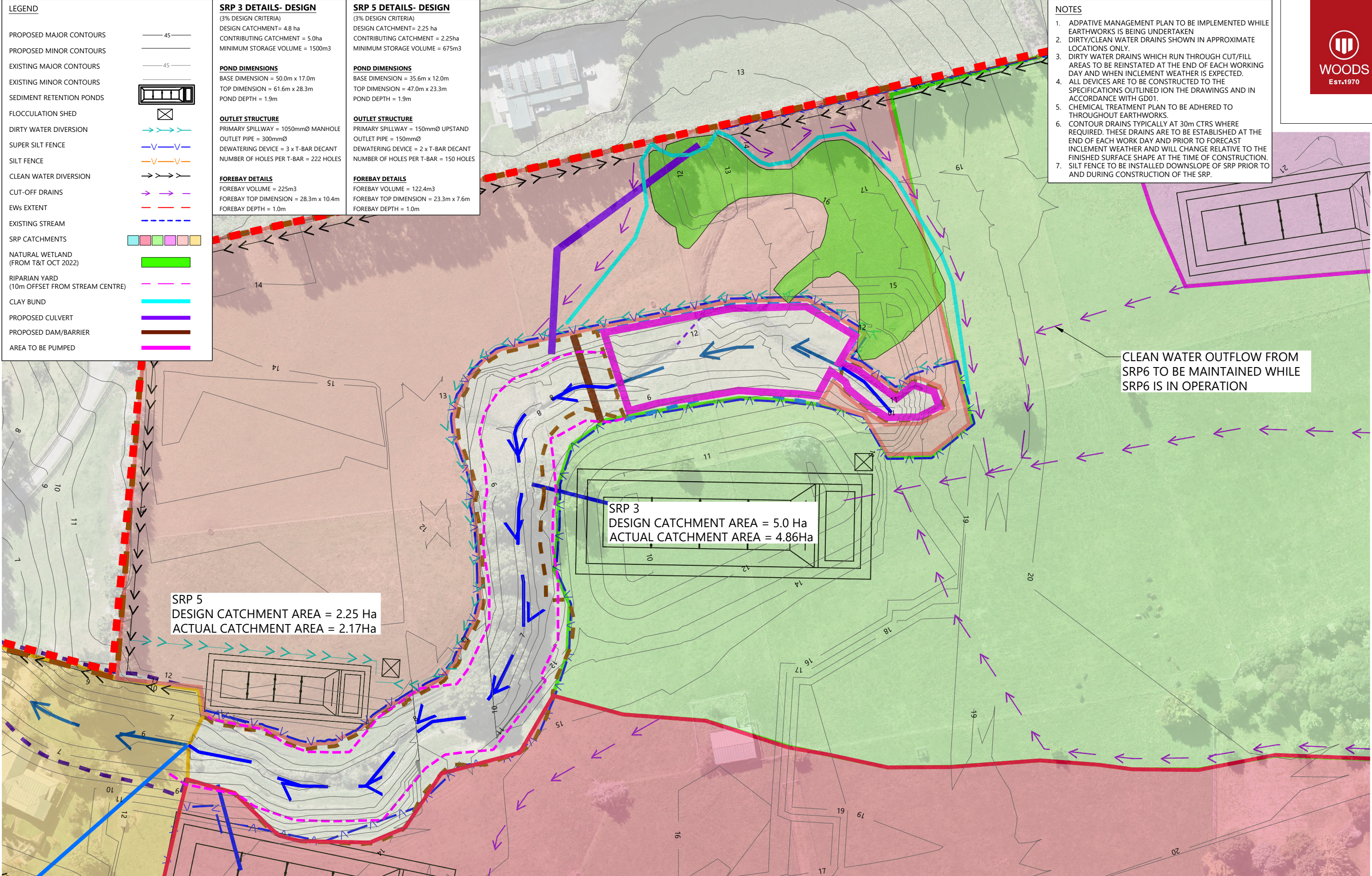
3. DIRTY WATER DRAINS WHICH RUN THROUGH CUT/FILL AREAS TO BE REINSTATED AT THE END OF EACH WORKING DAY AND WHEN INCLEMENT WEATHER IS EXPECTED.

4. ALL DEVICES ARE TO BE CONSTRUCTED TO THE SPECIFICATIONS OUTLINED ION THE DRAWINGS AND IN ACCORDANCE WITH GD01.

5. CHEMICAL TREATMENT PLAN TO BE ADHERED TO THROUGHOUT EARTHWORKS.

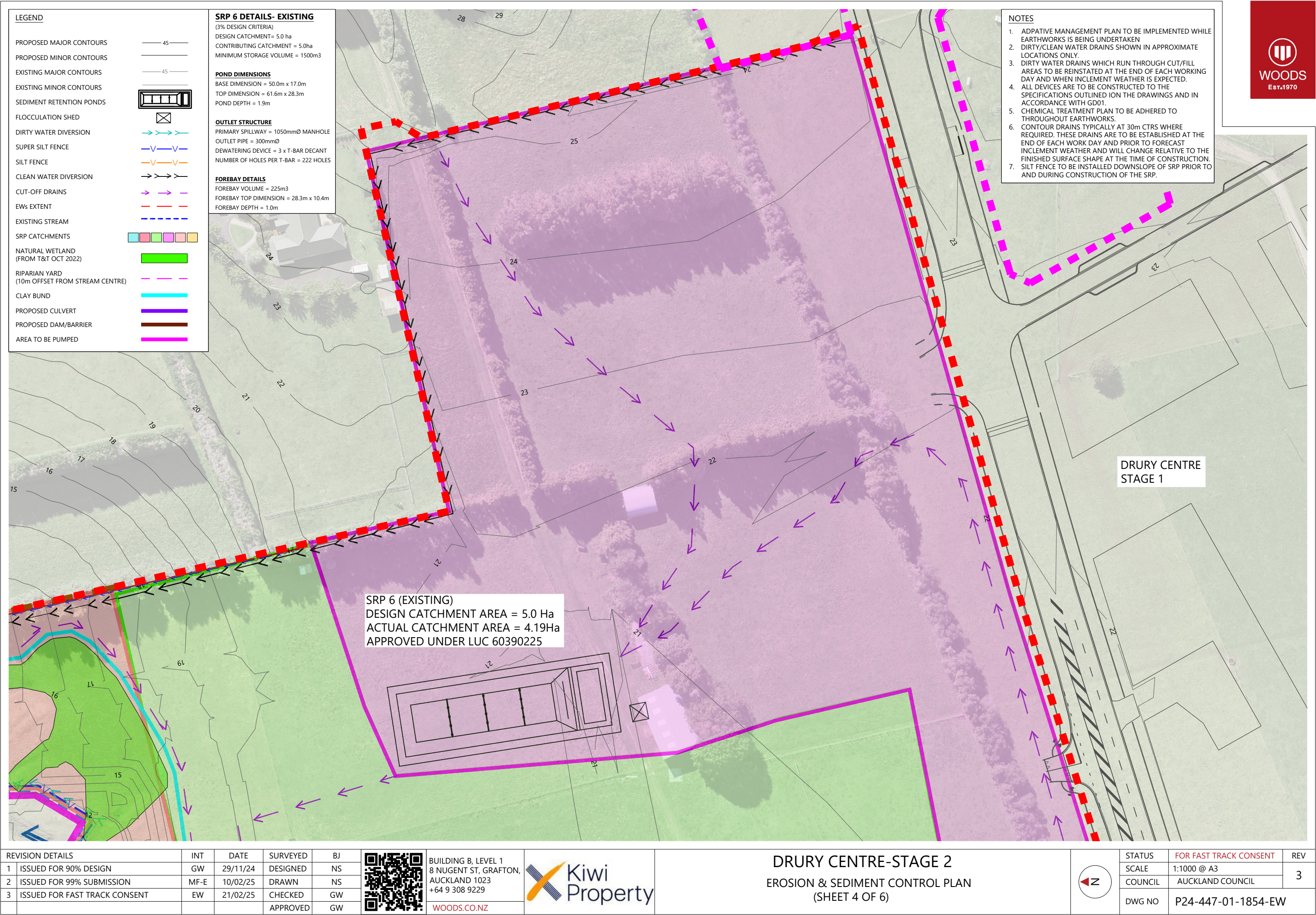
6. CONTOUR DRAINS TYPICALLY AT 30m CTRS WHERE REQUIRED. THESE DRAINS ARE TO BE ESTABLISHED AT THE END OF EACH WORK DAY AND PRIOR TO FORECAST INCLEMENT WEATHER AND WILL CHANGE RELATIVE TO THE FINISHED SURFACE SHAPE AT THE TIME OF CONSTRUCTION.

7. SILT FENCE TO BE INSTALLED DOWNSLOPE OF SRP PRIOR TO AND DURING CONSTRUCTION OF THE SRP.



REVISION DETAILS						BUILDING B, LEVEL 1 8 NUGENT ST, GRAFTON, AUCKLAND 1023 +64 9 308 9229 WOODS.CO.NZ		DRURY CENTRE-STAGE 2 EROSION & SEDIMENT CONTROL PLAN (SHEET 3 OF 6)				STATUS	FOR FAST TRACK CONSENT	REV	
1	ISSUED FOR 90% DESIGN	GW	29/11/24	DESIGNED				NS	SCALE	1:1000 @ A3		COUNCIL		AUCKLAND COUNCIL	3
2	ISSUED FOR 99% SUBMISSION	MF-E	10/02/25	DRAWN				NS							
3	ISSUED FOR FAST TRACK CONSENT	EW	21/02/25	CHECKED				GW							
				APPROVED				GW							
												DWG NO	P24-447-01-1853-EW		

Plot Date: 10:51:33 am, 12 March 2025, ELAWA
File C:\1205\DATA\WP-AKL-APP-02\P24-447 - DRURY CENTRE - STAGE 2_2214002 DRAWINGS\01 ENG\P24-447-01-1853-EW_EROSION & SEDIMENT CONTROL PLANDWG



LEGEND

PROPOSED MAJOR CONTOURS

PROPOSED MINOR CONTOURS

EXISTING MAJOR CONTOURS

EXISTING MINOR CONTOURS

SEDIMENT RETENTION PONDS

FLOCCULATION SHED

DIRTY WATER DIVERSION

SUPER SILT FENCE

SILT FENCE

CLEAN WATER DIVERSION

CUT-OFF DRAINS

EWs EXTENT

EXISTING STREAM

SRP CATCHMENTS

NATURAL WETLAND
(FROM T&T OCT 2022)

RIPARIAN YARD
(10m OFFSET FROM STREAM CENTRE)

CLAY BUND

PROPOSED CULVERT

PROPOSED DAM/BARRIER

AREA TO BE PUMPED

— 45 —

— 45 —

NOTES

1. ADPATIVE MANAGEMENT PLAN TO BE IMPLEMENTED WHILE EARTHWORKS IS BEING UNDERTAKEN

2. DIRTY/CLEAN WATER DRAINS SHOWN IN APPROXIMATE LOCATIONS ONLY.

3. DIRTY WATER DRAINS WHICH RUN THROUGH CUT/FILL AREAS TO BE REINSTATED AT THE END OF EACH WORKING DAY AND WHEN INCLEMENT WEATHER IS EXPECTED.

4. ALL DEVICES ARE TO BE CONSTRUCTED TO THE SPECIFICATIONS OUTLINED ION THE DRAWINGS AND IN ACCORDANCE WITH GDD1.

5. CHEMICAL TREATMENT PLAN TO BE ADHERED TO THROUGHOUT EARTHWORKS.

6. CONTOUR DRAINS TYPICALLY AT 30m CTRS WHERE REQUIRED. THESE DRAINS ARE TO BE ESTABLISHED AT THE END OF EACH WORK DAY AND PRIOR TO FORECAST INCLEMENT WEATHER AND WILL CHANGE RELATIVE TO THE FINISHED SURFACE SHAPE AT THE TIME OF CONSTRUCTION.

7. SILT FENCE TO BE INSTALLED DOWNSLOPE OF SRP PRIOR TO AND DURING CONSTRUCTION OF THE SRP.

SRP 7
DESIGN CATCHMENT AREA = 1.0 Ha
ACTUAL CATCHMENT AREA = 0.65Ha

SRP 7 DETAILS- EXISTING
(3% DESIGN CRITERIA)
DESIGN CATCHMENT= 0.65 ha
CONTRIBUTING CATCHMENT = 1.0ha
MINIMUM STORAGE VOLUME = 300m3

POND DIMENSIONS
BASE DIMENSION = 24.0m x 8.0m
TOP DIMENSION = 33.6m x 17.6m
POND DEPTH = 1.6m

OUTLET STRUCTURE
PRIMARY SPILLWAY = 150mmØ UPSTAND
OUTLET PIPE = 150mmØ
DEWATERING DEVICE = 1 x T-BAR DECANT
NUMBER OF HOLES PER T-BAR = 133 HOLES

FOREBAY DETAILS
FOREBAY VOLUME = 45m3
FOREBAY TOP DIMENSION = 17.6m x 4.6m
FOREBAY DEPTH = 1.0m

REVISION DETAILS		INT	DATE	SURVEYED	BJ
1	ISSUED FOR 90% DESIGN	NS	06/12/24	DESIGNED	NS
2	ISSUED FOR 99% SUBMISSION	MF-E	10/02/25	DRAWN	NS
3	ISSUED FOR FAST TRACK CONSENT	EW	21/02/25	CHECKED	GW
				APPROVED	GW

BUILDING B, LEVEL 1
8 NUGENT ST, GRAFTON,
AUCKLAND 1023
+64 9 308 9229

WOODS.CO.NZ

DRURY CENTRE-STAGE 2

EROSION & SEDIMENT CONTROL PLAN

(SHEET 5 OF 6)

	STATUS	FOR FAST TRACK CONSENT	3
	SCALE	1:1000 @ A3	
	COUNCIL	AUCKLAND COUNCIL	
DWG NO	P24-447-01-1855-EW		

Plot Date: 10:51:34 am, 12 March 2025, ELAWA
File: C:\1205\DATA\WP-AKL-APP-02\P24-447 - DRURY CENTRE - STAGE 2_2214002 DRAWINGS\01 ENG\P24-447-01-1855-EW_EROSION & SEDIMENT CONTROL PLANDWG

LEGEND

PROPOSED MAJOR CONTOURS — 45 —

PROPOSED MINOR CONTOURS — 45 —

EXISTING MAJOR CONTOURS — 45 —

EXISTING MINOR CONTOURS — 45 —

SEDIMENT RETENTION PONDS

FLOCCULATION SHED

DIRTY WATER DIVERSION

SUPER SILT FENCE

SILT FENCE

CLEAN WATER DIVERSION

CUT-OFF DRAINS

EWs EXTENT

EXISTING STREAM

SRP CATCHMENTS

NATURAL WETLAND (FROM T&T OCT 2022)

RIPARIAN YARD (10m OFFSET FROM STREAM CENTRE)

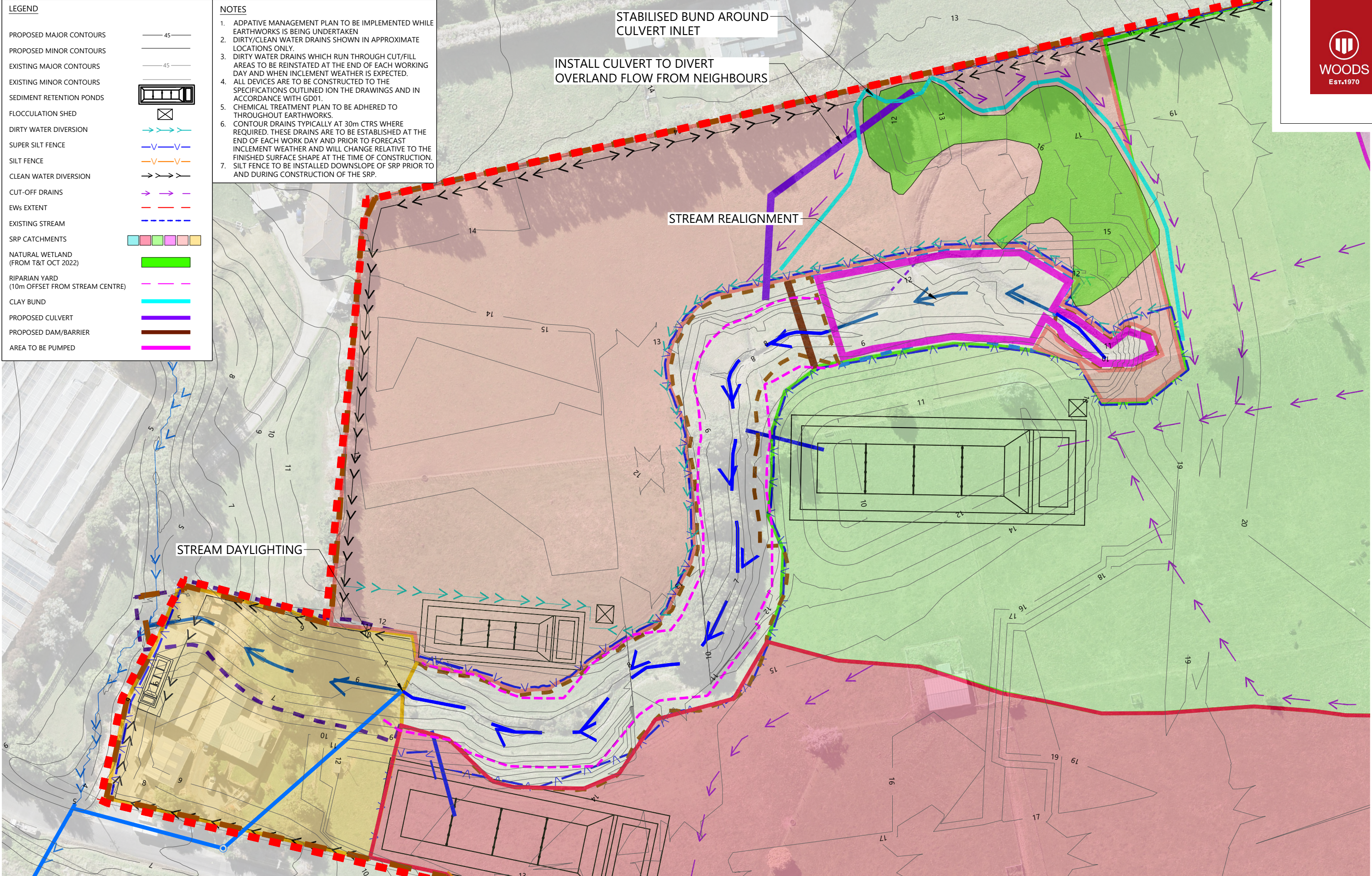
CLAY BUND

PROPOSED CULVERT

PROPOSED DAM/BARRIER

AREA TO BE PUMPED

- NOTES**
1. ADPATIVE MANAGEMENT PLAN TO BE IMPLEMENTED WHILE EARTHWORKS IS BEING UNDERTAKEN
 2. DIRTY/CLEAN WATER DRAINS SHOWN IN APPROXIMATE LOCATIONS ONLY.
 3. DIRTY WATER DRAINS WHICH RUN THROUGH CUT/FILL AREAS TO BE REINSTATED AT THE END OF EACH WORKING DAY AND WHEN INCLEMENT WEATHER IS EXPECTED.
 4. ALL DEVICES ARE TO BE CONSTRUCTED TO THE SPECIFICATIONS OUTLINED ION THE DRAWINGS AND IN ACCORDANCE WITH GD01.
 5. CHEMICAL TREATMENT PLAN TO BE ADHERED TO THROUGHOUT EARTHWORKS.
 6. CONTOUR DRAINS TYPICALLY AT 30m CTRS WHERE REQUIRED. THESE DRAINS ARE TO BE ESTABLISHED AT THE END OF EACH WORK DAY AND PRIOR TO FORECAST INCLEMENT WEATHER AND WILL CHANGE RELATIVE TO THE FINISHED SURFACE SHAPE AT THE TIME OF CONSTRUCTION.
 7. SILT FENCE TO BE INSTALLED DOWNSLOPE OF SRP PRIOR TO AND DURING CONSTRUCTION OF THE SRP.



REVISION DETAILS					INT	DATE	SURVEYED	BJ
1	ISSUED FOR 90% DESIGN	GW	29/11/24	DESIGNED	NS			
2	ISSUED FOR 99% SUBMISSION	MF-E	10/02/25	DRAWN	NS			
3	ISSUED FOR FAST TRACK CONSENT	EW	21/02/25	CHECKED	GW			
				APPROVED	GW			



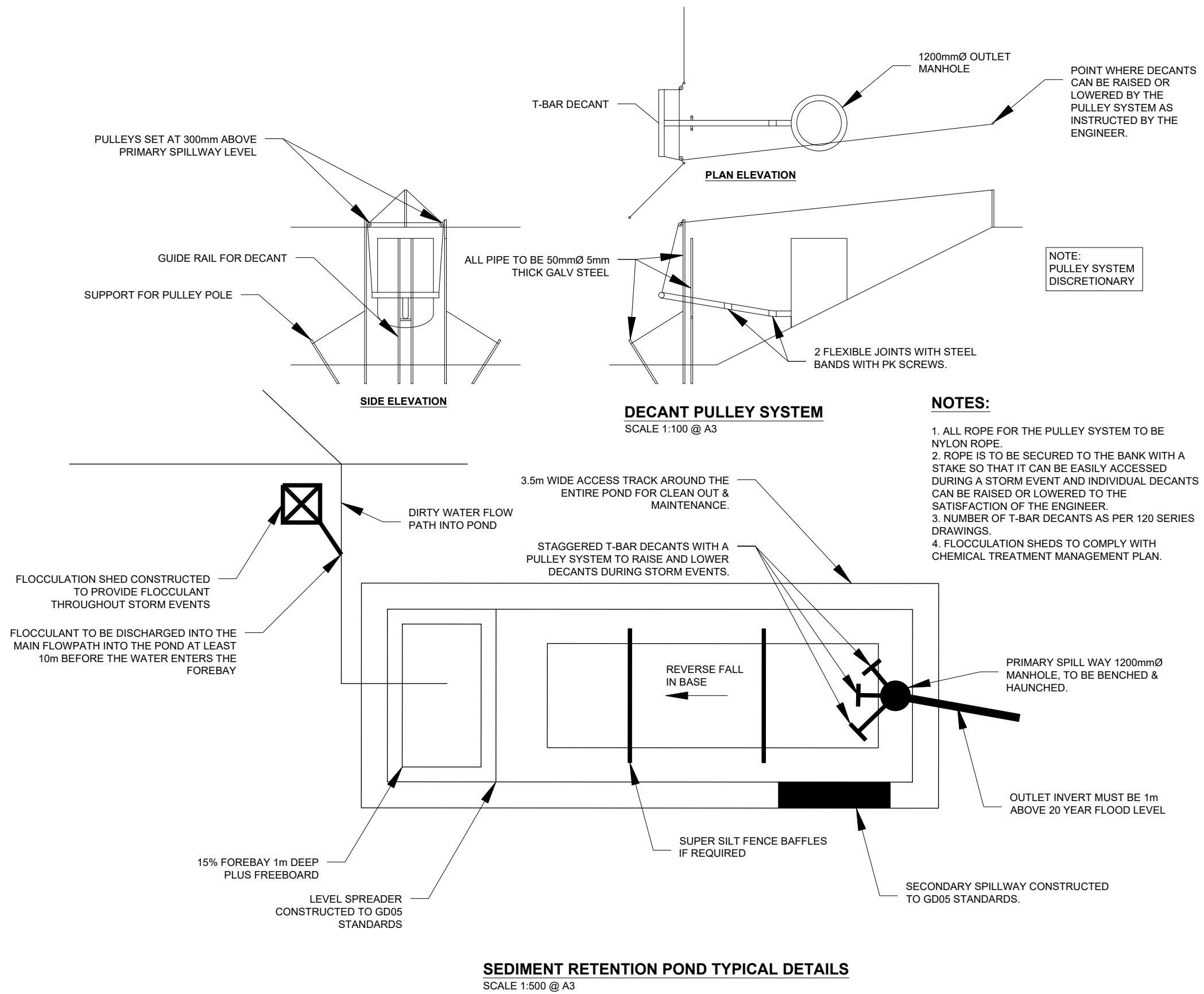
BUILDING B, LEVEL 1
8 NUGENT ST, GRAFTON,
AUCKLAND 1023
+64 9 308 9229
[WOODS.CO.NZ](https://www.woods.co.nz)



DRURY CENTRE-STAGE 2
EROSION & SEDIMENT CONTROL PLAN FOR REALIGNING STREAM
(SHEET 6 OF 6)



STATUS	FOR FAST TRACK CONSENT	REV
SCALE	1:1000 @ A3	3
COUNCIL	AUCKLAND COUNCIL	
DWG NO	P24-447-01-1856-EW	



REVISION DETAILS					INT	DATE	SURVEYED	
1	ISSUED FOR 90% DESIGN	GW	29/11/24	DESIGNED	NS			
2	ISSUED FOR 99% SUBMISSION	MF-E	10/02/25	DRAWN	NS			
3	ISSUED FOR FAST TRACK CONSENT	EW	21/02/25	CHECKED	GW			
				APPROVED	GW			

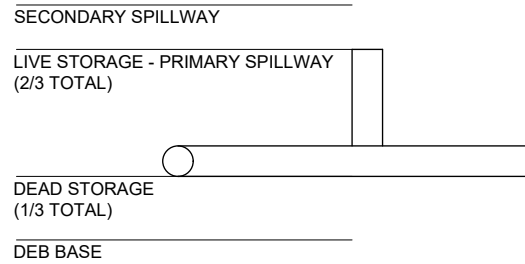
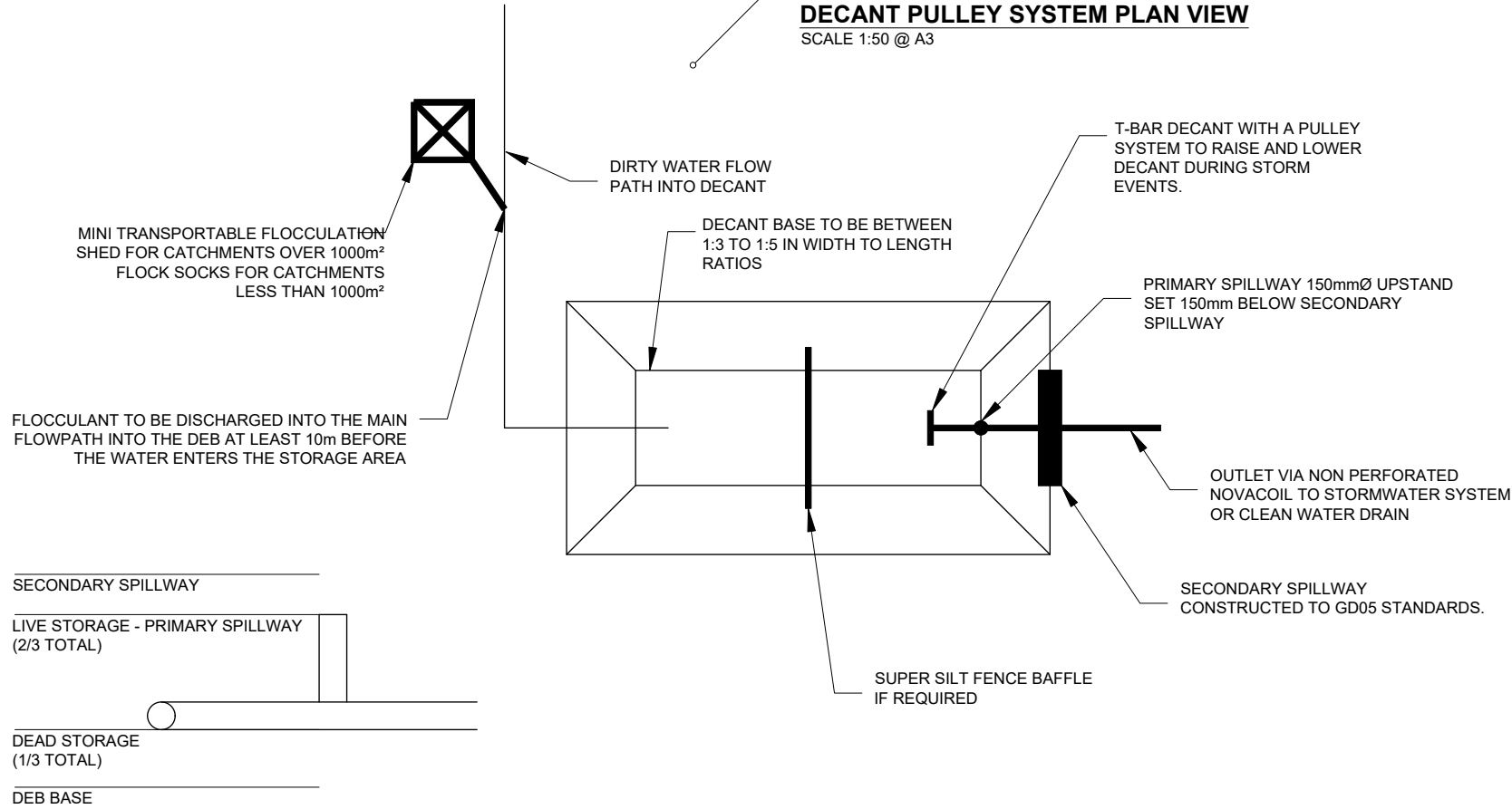
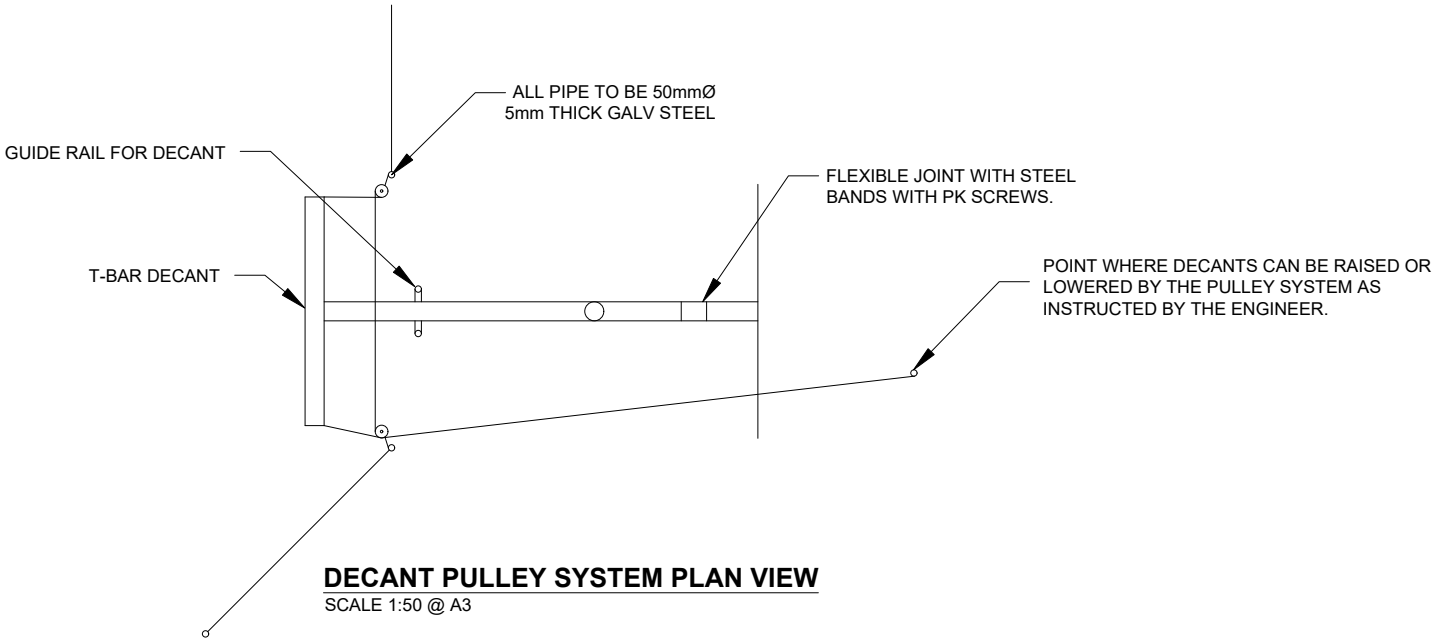


BUILDING B, LEVEL 1
8 NUGENT ST, GRAFTON,
AUCKLAND 1023
+64 9 308 9229
[WOODS.CO.NZ](https://www.woods.co.nz)



DRURY CENTRE-STAGE 2
STAGE 2 BULK EARTHWORKS
EROSION & SEDIMENT CONTROL TYPICAL DETAILS

STATUS	FOR FAST TRACK CONSENT	REV
SCALE	NOT TO SCALE	3
COUNCIL	AUCKLAND COUNCIL	
DWG NO	P24-447-01-1857-EW	



REVISION DETAILS		INT	DATE	SURVEYED	
1	ISSUED FOR 90% DESIGN	GW	29/11/24	DESIGNED	NS
2	ISSUED FOR 99% SUBMISSION	MF-E	10/02/25	DRAWN	NS
3	ISSUED FOR FAST TRACK CONSENT	EW	21/02/25	CHECKED	GW
				APPROVED	GW

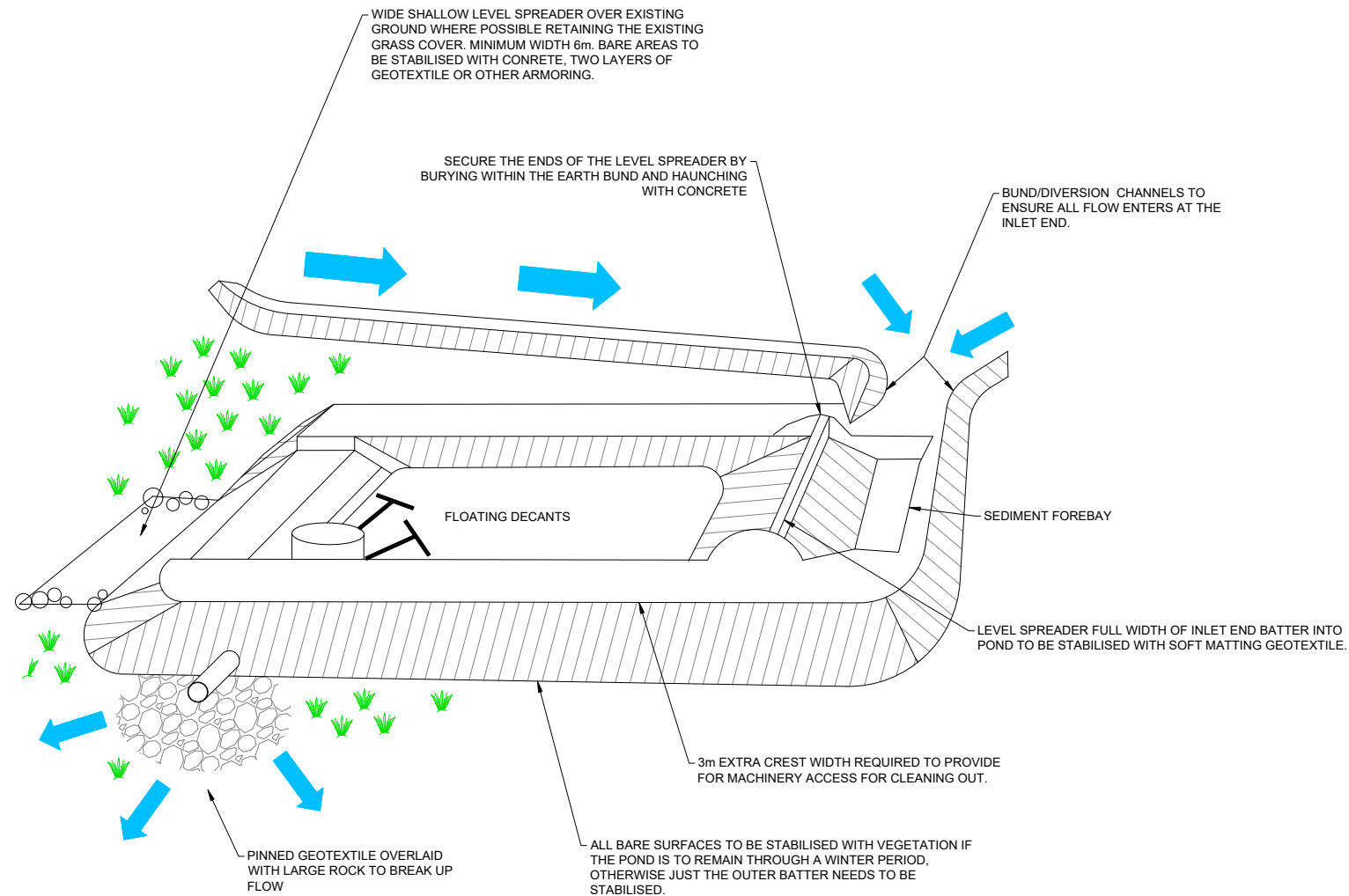


BUILDING B, LEVEL 1
8 NUGENT ST, GRAFTON,
AUCKLAND 1023
+64 9 308 9229
[WOODS.CO.NZ](https://www.woods.co.nz)

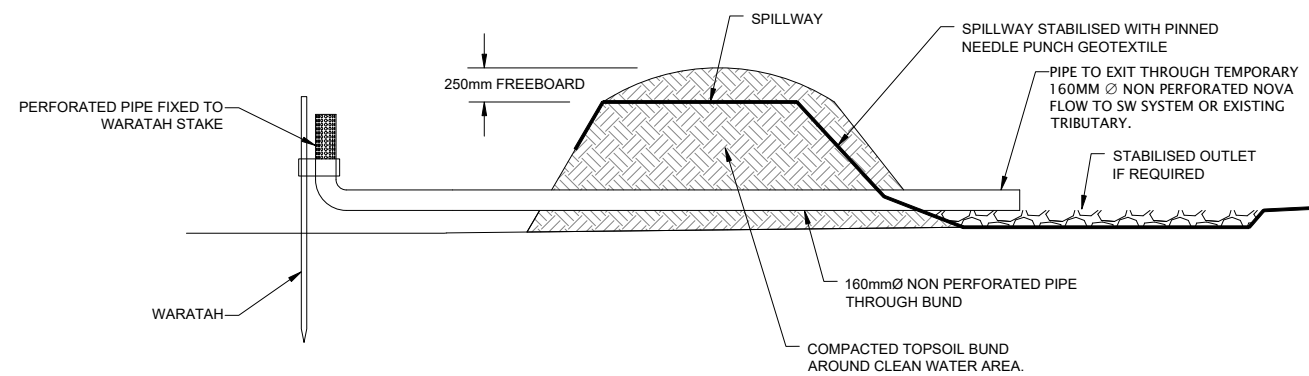


DRURY CENTRE-STAGE 2
STAGE 2 BULK EARTHWORKS
EROSION & SEDIMENT CONTROL TYPICAL DETAILS

STATUS	FOR FAST TRACK CONSENT	REV
SCALE	NOT TO SCALE	3
COUNCIL	AUCKLAND COUNCIL	
DWG NO	P24-447-01-1858-EW	

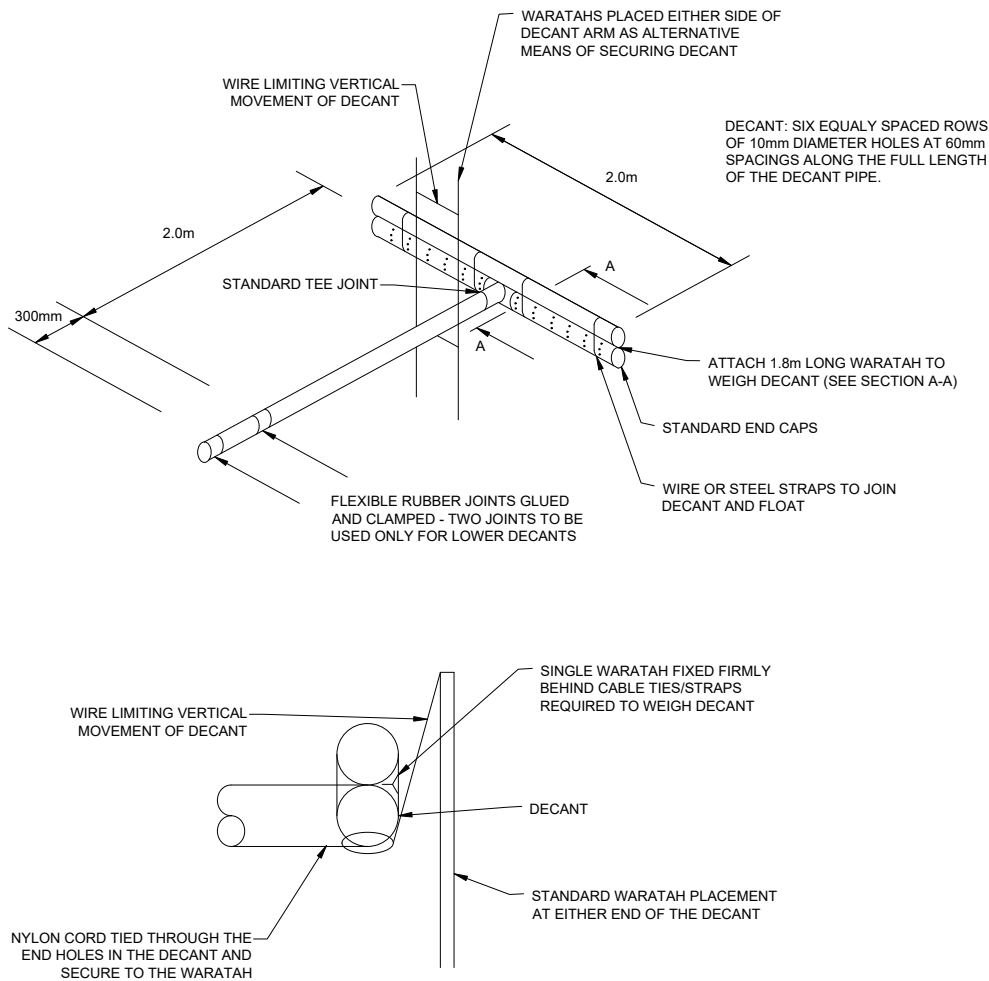


SEDIMENT RETENTION POND SCHEMATIC

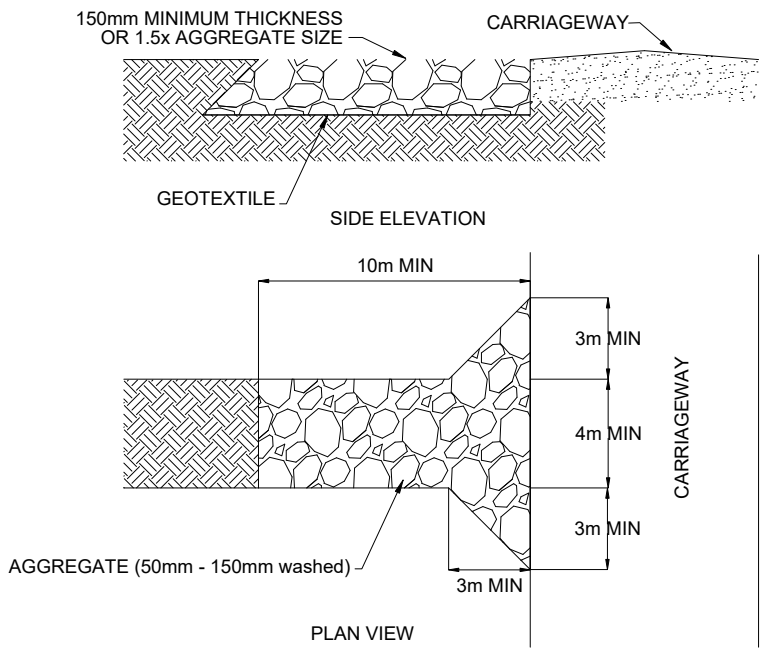


CLEAN WATER DECANT DETAIL

NOTES:
REFER TO ESCP FOR DECANT DESIGN & NUMBER OF HOLES.



T-BAR DECANT DETAIL



STABILISED CONSTRUCTION ENTRANCE DETAIL

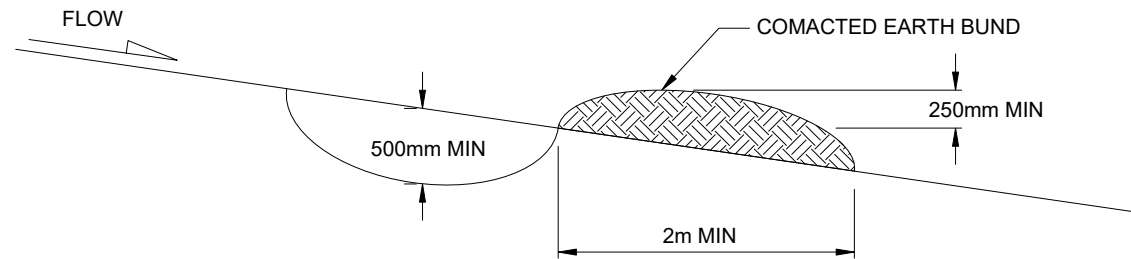
REVISION DETAILS					INT	DATE	SURVEYED	
1	ISSUED FOR 90% DESIGN	GW	29/11/24	DESIGNED	NS			
2	ISSUED FOR 99% SUBMISSION	MF-E	10/02/25	DRAWN	NS			
3	ISSUED FOR FAST TRACK CONSENT	EW	21/02/25	CHECKED	GW			
				APPROVED	GW			

BUILDING B, LEVEL 1
8 NUGENT ST, GRAFTON,
AUCKLAND 1023
+64 9 308 9229
WOODS.CO.NZ



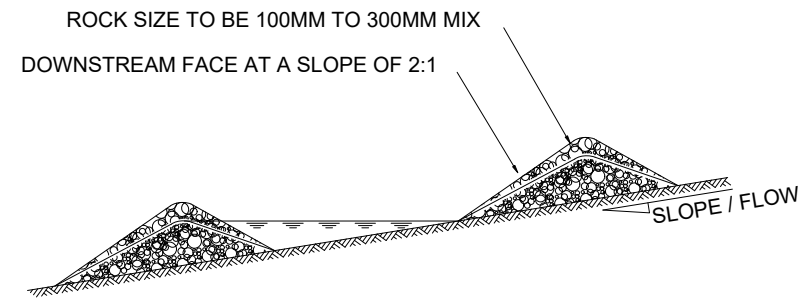
DRURY CENTRE-STAGE 2
STAGE 2 BULK EARTHWORKS
EROSION & SEDIMENT CONTROL TYPICAL DETAILS

STATUS	FOR FAST TRACK CONSENT	REV
SCALE	NOT TO SCALE	3
COUNCIL	AUCKLAND COUNCIL	
DWG NO	P24-447-01-1859-EW	



CONTOUR DRAIN DETAIL

Scale: 1:50 @ A3



ELEVATION



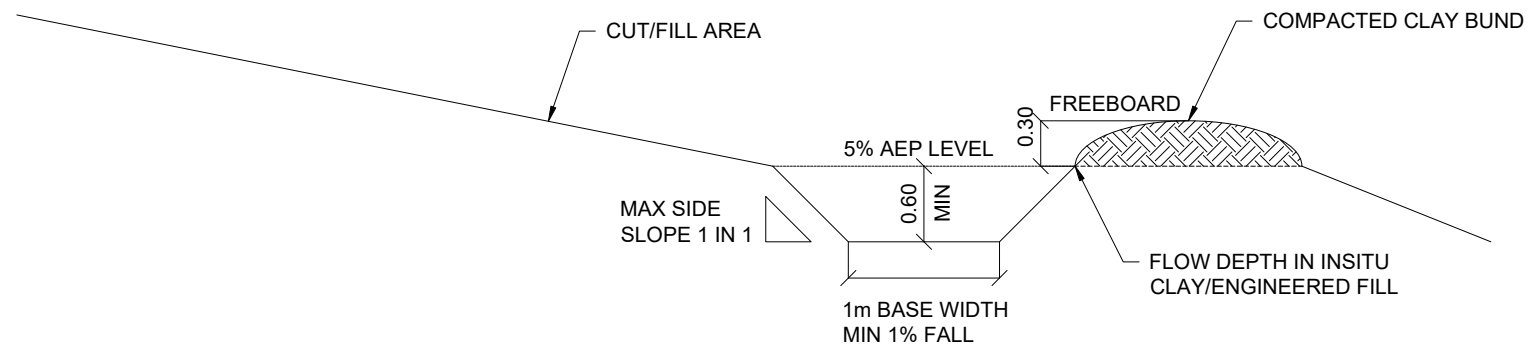
CROSS SECTION

STANDARD ROCK CHECK DAM DESIGN

SLOPE	SPACING (M) BETWEEN DAMS (450MM CENTRE HEIGHT)	SPACING (M) BETWEEN DAMS (600MM CENTRE HEIGHT)
2% OR LESS	24	30
2% TO 4%	12	15
4% TO 7%	8	11
7% TO 10%	5	6
OVER 10%	USE STABILISED CHANNEL	USE STABILISED CHANNEL

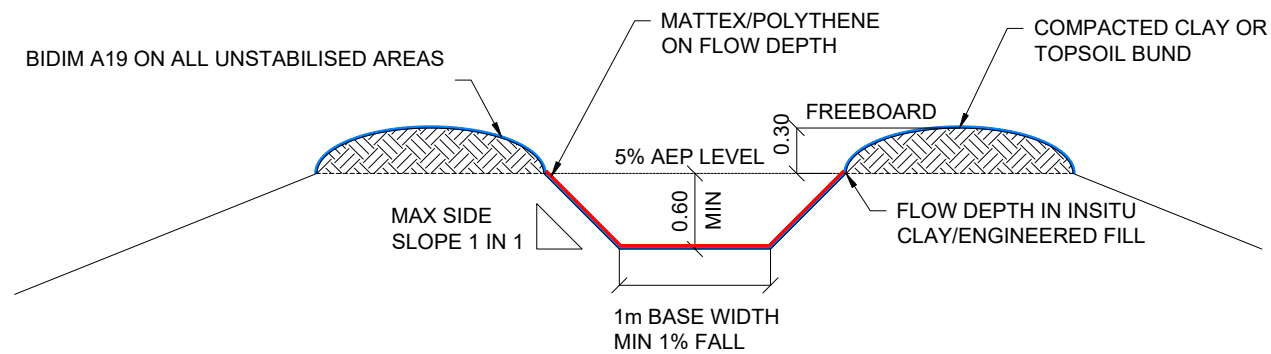
ROCK CHECK DAM DETAIL

Not to Scale



PRIMARY DIRTY WATER DIVERSION DRAIN DETAIL

Scale: 1:50 @ A3



PRIMARY CLEAN WATER DIVERSION DRAIN DETAIL

Scale: 1:50 @ A3

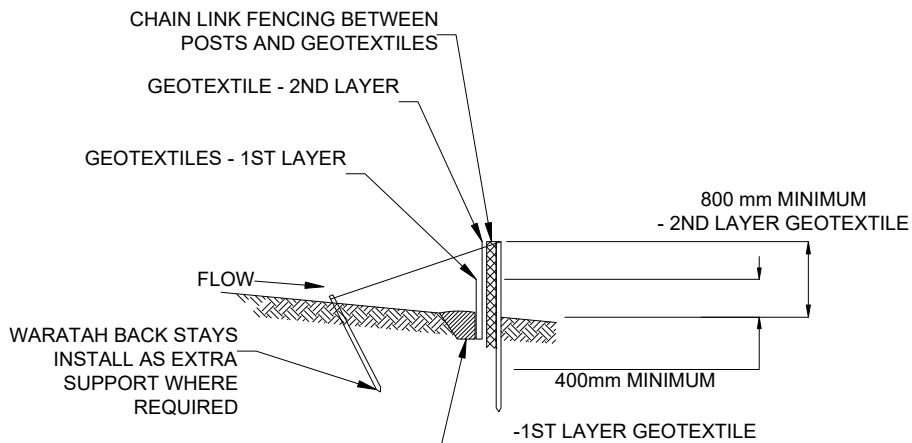
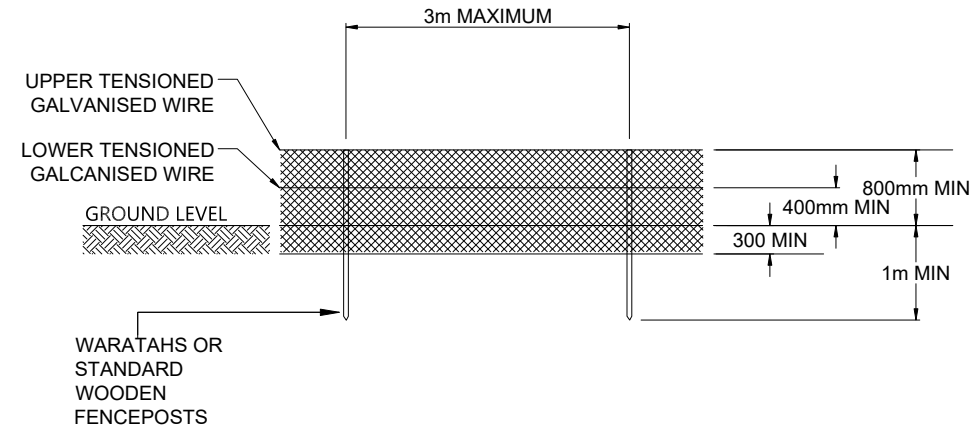
PRIMARY DRAINS NOTES:

1. DRAINS DESIGNED FOR MAXIMUM 6 Ha CATCHMENTS WITH MINIMUM 1% GRADES. WHERE CATCHMENTS ARE LARGER OR GRADES ARE LESS, THEN FURTHER DESIGN IS REQUIRED BY THE ENGINEER PRIOR TO CONSTRUCTION.
2. LINING OF CLEAN WATER DRAINS IS TO BE BIDIM A19 ON ALL EXPOSED CLAY AREAS AND MATTEX GT15 ON TOP OF BIDIM WITHIN FLOW CHANNEL. POLYTHENE MAY BE REQUIRED UPON INSTRUCTION BY GEOTECHNICAL ENGINEER IN SPECIFIC AREAS.
3. ROCK CHECK DAMS IN CLEAN WATER AND DROP OUT PITS FOR DIRTY WATER DRAINS ARE REQUIRED FOR GRADES STEEPER THAN 5%. LOCATIONS TO BE DETERMINED ON SITE BY ENGINEER PRIOR TO INSTALLATION.

REVISION DETAILS						BUILDING B, LEVEL 1 8 NUGENT ST, GRAFTON, AUCKLAND 1023 +64 9 308 9229 WOODS.CO.NZ		DRURY CENTRE-STAGE 2 STAGE 2 BULK EARTHWORKS EROSION & SEDIMENT CONTROL TYPICAL DETAILS				
1	ISSUED FOR 90% DESIGN	GW	29/11/24	DESIGNED						STATUS	FOR FAST TRACK CONSENT	REV
2	ISSUED FOR 99% SUBMISSION	MF-E	10/02/25	DRAWN						SCALE	NOT TO SCALE	3
3	ISSUED FOR FAST TRACK CONSENT	EW	21/02/25	CHECKED						COUNCIL	AUCKLAND COUNCIL	
				APPROVED						DWG NO	P24-447-01-1860-EW	

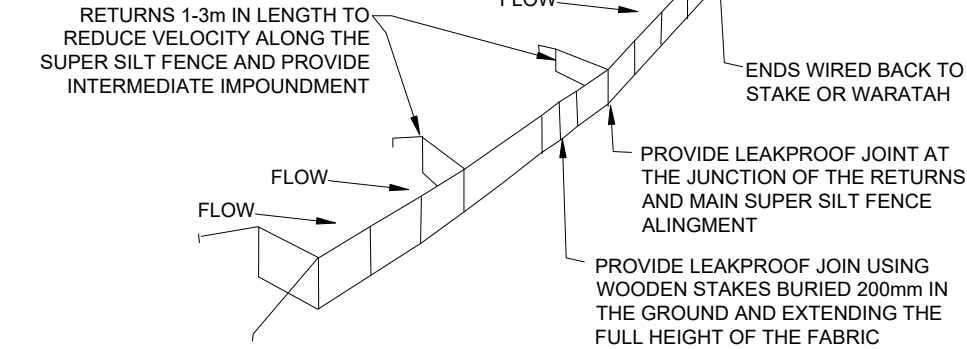
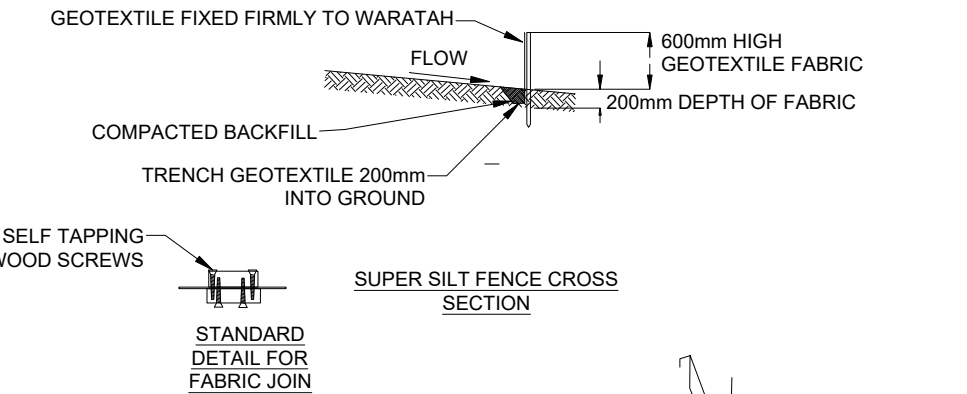
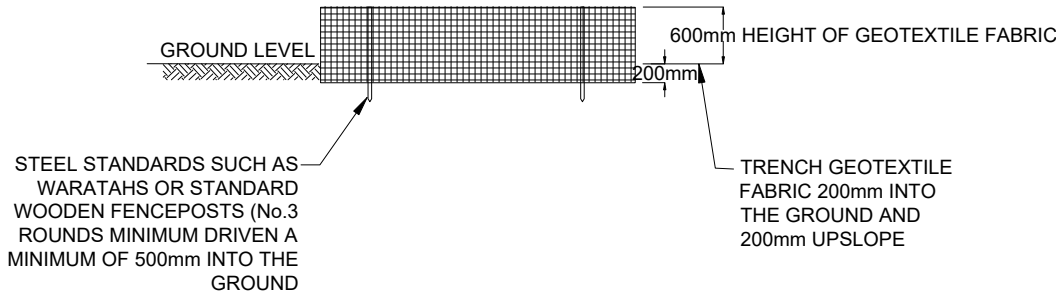
NOTES:
1. POST SPACING CAN BE INCREASED FROM 2m TO 4m IF SUPPORTED BY A 2.5mm DIAMETER HIGH TENSILE WIRE ALONG THE TOP WITH CLIPS EVERY 200mm
2. WRAP BOTH ENDS OF THE FABRIC AROUND ON STAKE AND CLAMP THE OTHER STAKE TO IT USING SELF TAPPING WOOD SCREWS AT 150mm SPACINGS

SUPER SILT FENCE RETURNS DETAILS	
SLOPE DRAIN (%)	SPACING RETURN (m)
00-10	60
10-20	50
20-33	40
33-50	30
>50	20



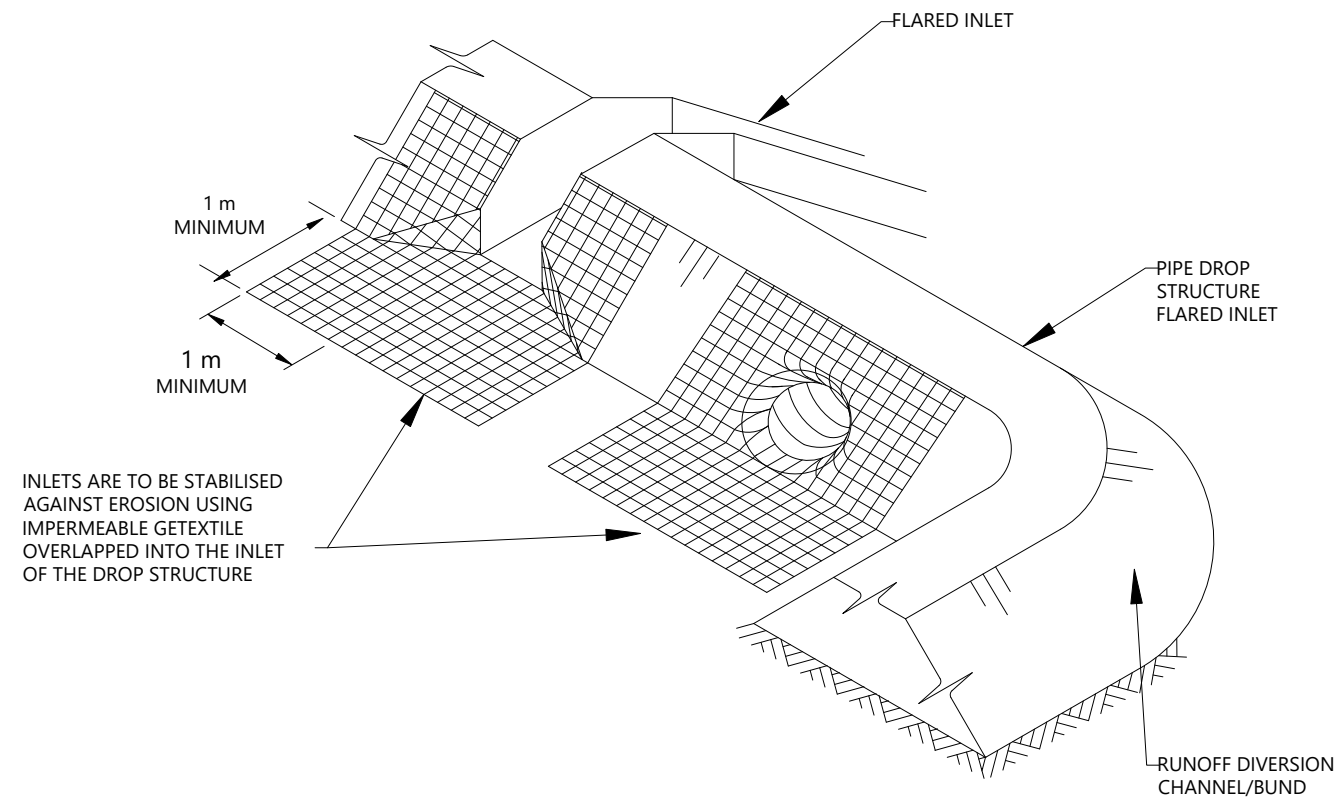
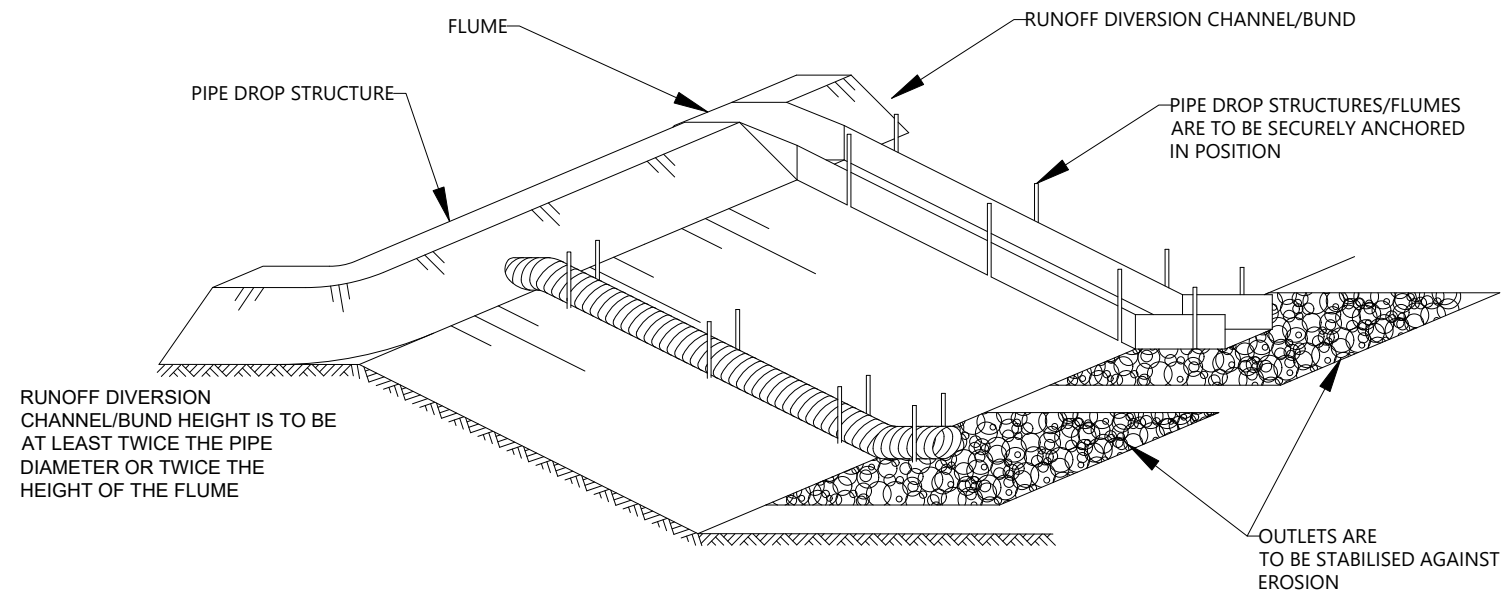
TYPICAL CATCHMENT DETAILS		
SLOPE (%)	SLOPE LENGTH (m)	SUPER SILT FENCE (m)
00-10	UNLIMITED	UNLIMITED
10-20	60	450
20-33	30	300
33-50	30	150
>50	15	75

SUPER SUPER SILT FENCE DETAIL



SUPER SILT FENCE WITH RETURNS DETAIL

REVISION DETAILS						BUILDING B, LEVEL 1 8 NUGENT ST, GRAFTON, AUCKLAND 1023 +64 9 308 9229 WOODS.CO.NZ		DRURY CENTRE-STAGE 2				STATUS	FOR FAST TRACK CONSENT	REV		
1	ISSUED FOR 90% DESIGN		GW	29/11/24				DESIGNED	NS	STAGE 2 BULK EARTHWORKS				SCALE	NOT TO SCALE	3
2	ISSUED FOR 99% SUBMISSION		MF-E	10/02/25				DRAWN	NS	EROSION & SEDIMENT CONTROL TYPICAL DETAILS				COUNCIL	AUCKLAND COUNCIL	
3	ISSUED FOR FAST TRACK CONSENT		EW	21/02/25				CHECKED	GW					DWG NO	P24-447-01-1861-EW	
								APPROVED	GW							



DESIGN CRITERIA FOR PIPE DROP STRUCTURE

PIPE DIAMETER (mm)	MAXIMUM CATCHMENT AREA (ha)
150	0.05
300	0.20
450	0.60
500	1.00
600	1.00

PIPE DROP STRUCTURE DETAIL (IF REQUIRED)

REVISION DETAILS						BUILDING B, LEVEL 1 8 NUGENT ST, GRAFTON, AUCKLAND 1023 +64 9 308 9229 WOODS.CO.NZ		DRURY CENTRE-STAGE 2 STAGE 2 BULK EARTHWORKS EROSION & SEDIMENT CONTROL TYPICAL DETAILS						
1	ISSUED FOR 90% DESIGN	GW	29/11/24	DESIGNED							NS	STATUS	FOR FAST TRACK CONSENT	REV
2	ISSUED FOR 99% SUBMISSION	MF-E	10/02/25	DRAWN							NS	SCALE	NOT TO SCALE	3
3	ISSUED FOR FAST TRACK CONSENT	EW	21/02/25	CHECKED							GW	COUNCIL	AUCKLAND COUNCIL	
				APPROVED							GW			

LEGEND

STAGE 2 BOUNDARY	
STAGE 1 BOUNDARY	
LOT BOUNDARY	
PROPOSED RAINGARDEN	
PROPOSED RETAINING WALL	
SUBSOIL DRAIN	
PARKING BAYS	
COMMUNAL RAINGARDENS	
RAISED SPEED TABLE	
DIRECTIONAL INDICATOR	
WARNING INDICATOR	
CARRIAGEWAY	
FOOTPATH	
CYCLE PATH	
STREET TREES	
STREET LIGHTS	
SIGNAL POST AND CALL BOX	

NOTES

1. ALL WORK AND MATERIALS TO COMPLY WITH AUCKLAND COUNCIL STANDARDS. ANY AMBIGUITY BETWEEN DRAWINGS AND COUNCIL STANDARDS TO BE REPORTED TO THE ENGINEER FOR CLARIFICATION.
2. KERB & CHANNEL AND KERB & NIB ARE TO BE SLIPFORM VERTICAL AS SHOWN ON DRAWING P24-447-01-2855-RD UNLESS OTHERWISE SHOWN.
3. ALL CATCHPITS TO BE SEMI-RECESSED 800X500 1.2m LINTEL AS SHOWN ON PLAN P24-447-2852-RD UNLESS SPECIFIED OTHERWISE.
4. FOOTPATHS TO BE CONSTRUCTED AS PER DETAILS ON TYPICAL CROSS SECTION DRAWINGS P24-447-01-2200-RD TO 2204-RD.
5. PRAM CROSSINGS TO BE CONSTRUCTED AS PER AUCKLAND COUNCIL STANDARD, AUCKLAND TRANSPORT DESIGN MANUAL AND RTS 14
6. VEHICLE CROSSINGS ARE TO BE CONSTRUCTED AS PER THE DETAILS ON DRAWINGS P24-447-01-2856-RD AND IN ACCORDANCE WITH AUCKLAND COUNCIL STANDARD WITH ONE LAYER OF 665 MESH CENTRALLY PLACED.
7. ALL LANE MARKING AND ROAD SIGNAGE IS TO BE CONSTRUCTED AS PER NEW ZEALAND TRANSPORT AGENCY MANUAL OF SIGNS AND MARKINGS.
8. ALL SUBSOIL DRAINAGE TO BE LAID AT A MIN 0.5% GRADE.
9. ALL PRAM CROSSINGS HAVE 5% GRADIENT, AS PER AT TRANSPORT DESIGN MANUAL (TDM).
10. SUBSOIL DRAIN TO BE CONNECTED INTO THE UPSTREAM MANHOLE AND CAPPED OFF WITH SCREWCAP FOR FUTURE MAINTENANCE.

REVISION DETAILS	INT	DATE	SURVEYED	
4 ISSUED FOR 90% DESIGN	NS	29/11/2024	DESIGNED	NS
5 ISSUED FOR EPA	NS	16/12/2024	DRAWN	NS
6 ISSUED FOR 99% SUBMISSION	MF-E	10/02/2025	CHECKED	GW
7 ISSUED FOR FAST TRACK CONSENT	EW	21/02/2025	APPROVED	GW



BUILDING B, LEVEL 1
8 NUGENT ST, GRAFTON,
AUCKLAND 1023
+64 9 308 9229
[WOODS.CO.NZ](https://www.woods.co.nz)

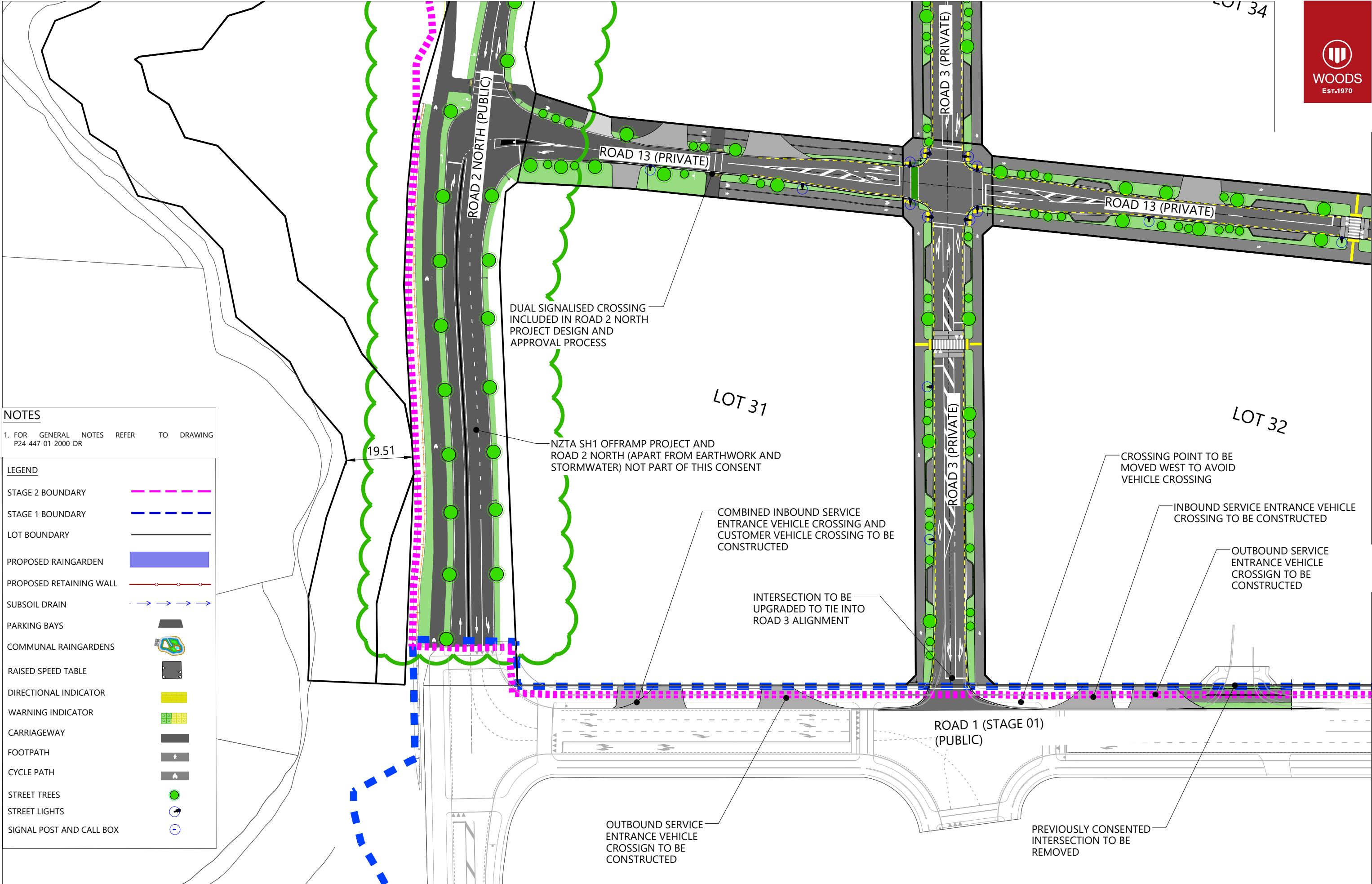


DRURY CENTRE-STAGE 2

OVERALL ROADING LAYOUT PLAN



STATUS	FOR FAST TRACK CONSENT	REV
SCALE	1:5000 @ A3	7
COUNCIL	AUCKLAND COUNCIL	
DWG NO	P24-447-01-2000-RD	



NOTES

1. FOR GENERAL NOTES REFER TO DRAWING P24-447-01-2000-DR

LEGEND	
STAGE 2 BOUNDARY	
STAGE 1 BOUNDARY	
LOT BOUNDARY	
PROPOSED RAINGARDEN	
PROPOSED RETAINING WALL	
SUBSOIL DRAIN	
PARKING BAYS	
COMMUNAL RAINGARDENS	
RAISED SPEED TABLE	
DIRECTIONAL INDICATOR	
WARNING INDICATOR	
CARRIAGEWAY	
FOOTPATH	
CYCLE PATH	
STREET TREES	
STREET LIGHTS	
SIGNAL POST AND CALL BOX	

REVISION DETAILS		INT	DATE	SURVEYED	
4	ISSUED FOR 90% DESIGN	NS	29/11/2024	DESIGNED	NS
5	ISSUED FOR EPA	NS	16/12/2024	DRAWN	NS
6	ISSUED FOR 99% SUBMISSION	MF-E	10/02/2025	CHECKED	GW
7	ISSUED FOR FAST TRACK CONSENT	EW	21/02/2025	APPROVED	GW



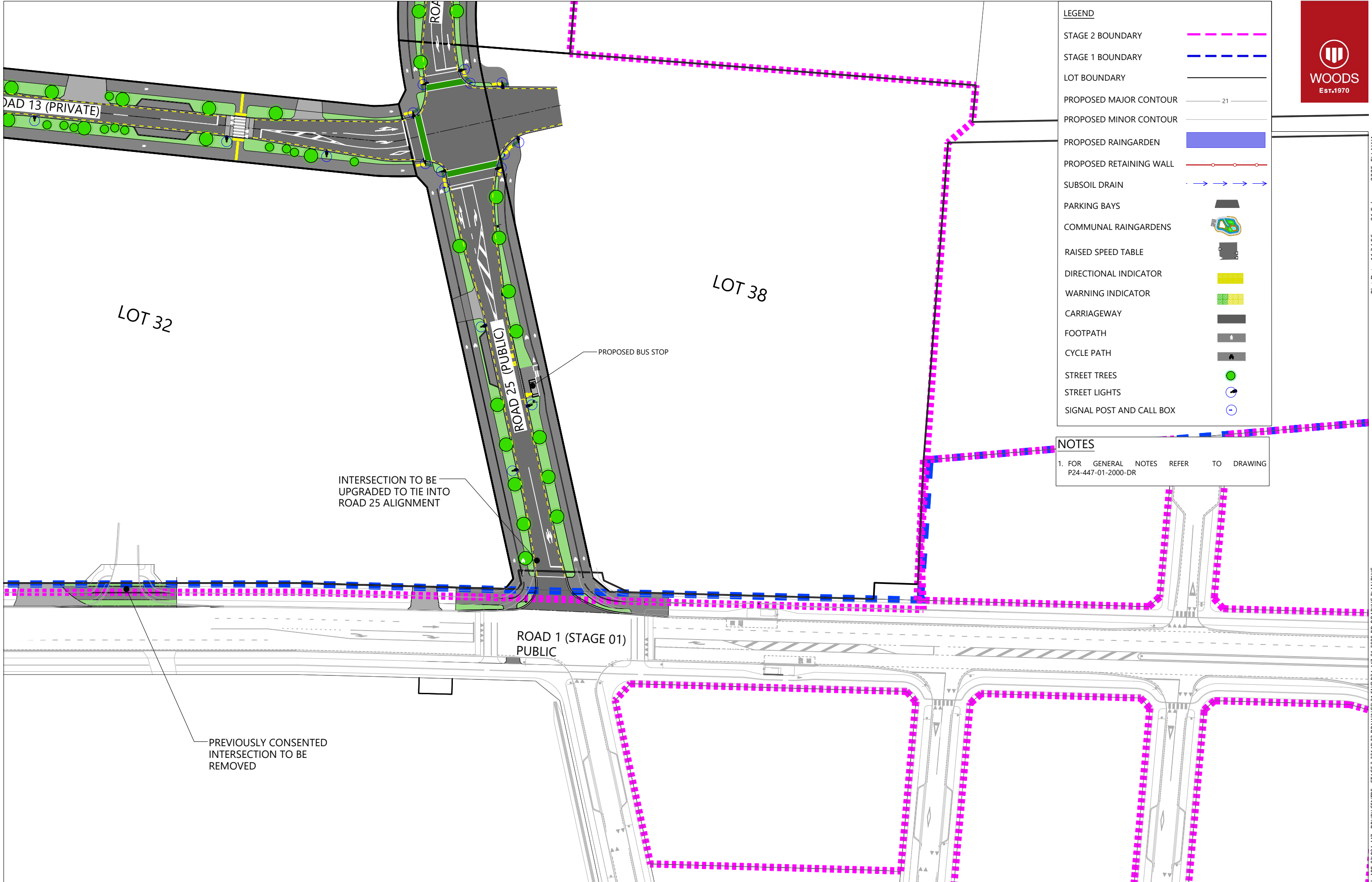
BUILDING B, LEVEL 1
8 NUGENT ST, GRAFTON,
AUCKLAND 1023
+64 9 308 9229
[WOODS.CO.NZ](https://www.woods.co.nz)



DRURY CENTRE-STAGE 2
ROADING PLAN (SHEET 1 OF 4)



STATUS	FOR FAST TRACK CONSENT	REV
SCALE	1:1000 @ A3	7
COUNCIL	AUCKLAND COUNCIL	
DWG NO	P24-447-01-2001-DR	



Plot Date: 11:34:56 am,21 February 2025, ELLAWA
File C:\1205\DATA\WP-AKL-APP-02\P24-447 - DRURY CENTRE - STAGE 2_2214002 DRAWINGS\01 ENG\P24-447-01-2000-RD_ROADING PLANDWG

REVISION DETAILS		INT	DATE	SURVEYED		
4	ISSUED FOR 90% DESIGN	NS	29/11/2024	DESIGNED	NS	
5	ISSUED FOR EPA	NS	16/12/2024	DRAWN	NS	
6	ISSUED FOR 99% SUBMISSION	MF-E	10/02/2025	CHECKED	GW	
7	ISSUED FOR FAST TRACK CONSENT	EW	21/02/2025	APPROVED	GW	



BUILDING B, LEVEL 1
8 NUGENT ST, GRAFTON,
AUCKLAND 1023
+64 9 308 9229
[WOODS.CO.NZ](https://www.woods.co.nz)



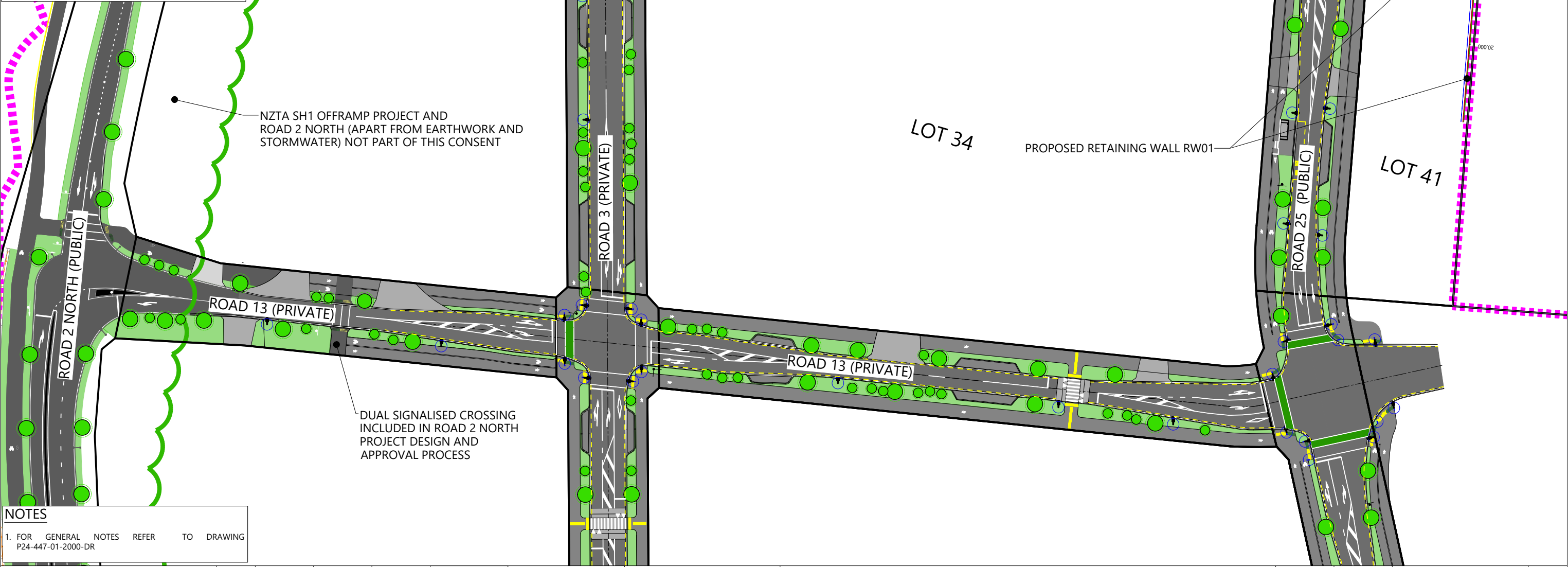
DRURY CENTRE-STAGE 2
ROADING PLAN (SHEET 2 OF 4)



STATUS	FOR FAST TRACK CONSENT	REV
SCALE	1:1000 @ A3	7
COUNCIL	AUCKLAND COUNCIL	
DWG NO	P24-447-01-2002-DR	

LEGEND

- STAGE 2 BOUNDARY
- STAGE 1 BOUNDARY
- LOT BOUNDARY
- PROPOSED RAINGARDEN
- PROPOSED RETAINING WALL
- SUBSOIL DRAIN
- PARKING BAYS
- COMMUNAL RAINGARDENS
- RAISED SPEED TABLE
- DIRECTIONAL INDICATOR
- WARNING INDICATOR
- CARRIAGEWAY
- FOOTPATH
- CYCLE PATH
- STREET TREES
- STREET LIGHTS
- SIGNAL POST AND CALL BOX



NOTES

1. FOR GENERAL NOTES REFER TO DRAWING P24-447-01-2000-DR


REVISION DETAILS					INT	DATE	SURVEYED	
4	ISSUED FOR 90% DESIGN	NS	29/11/2024	DESIGNED	NS			
5	ISSUED FOR EPA	NS	16/12/2024	DRAWN	NS			
6	ISSUED FOR 99% SUBMISSION	MF-E	10/02/2025	CHECKED	GW			
7	ISSUED FOR FAST TRACK CONSENT	EW	21/02/2025	APPROVED	GW			

BUILDING B, LEVEL 1
8 NUGENT ST, GRAFTON,
AUCKLAND 1023
+64 9 308 9229
[WOODS.CO.NZ](https://www.woods.co.nz)



DRURY CENTRE-STAGE 2

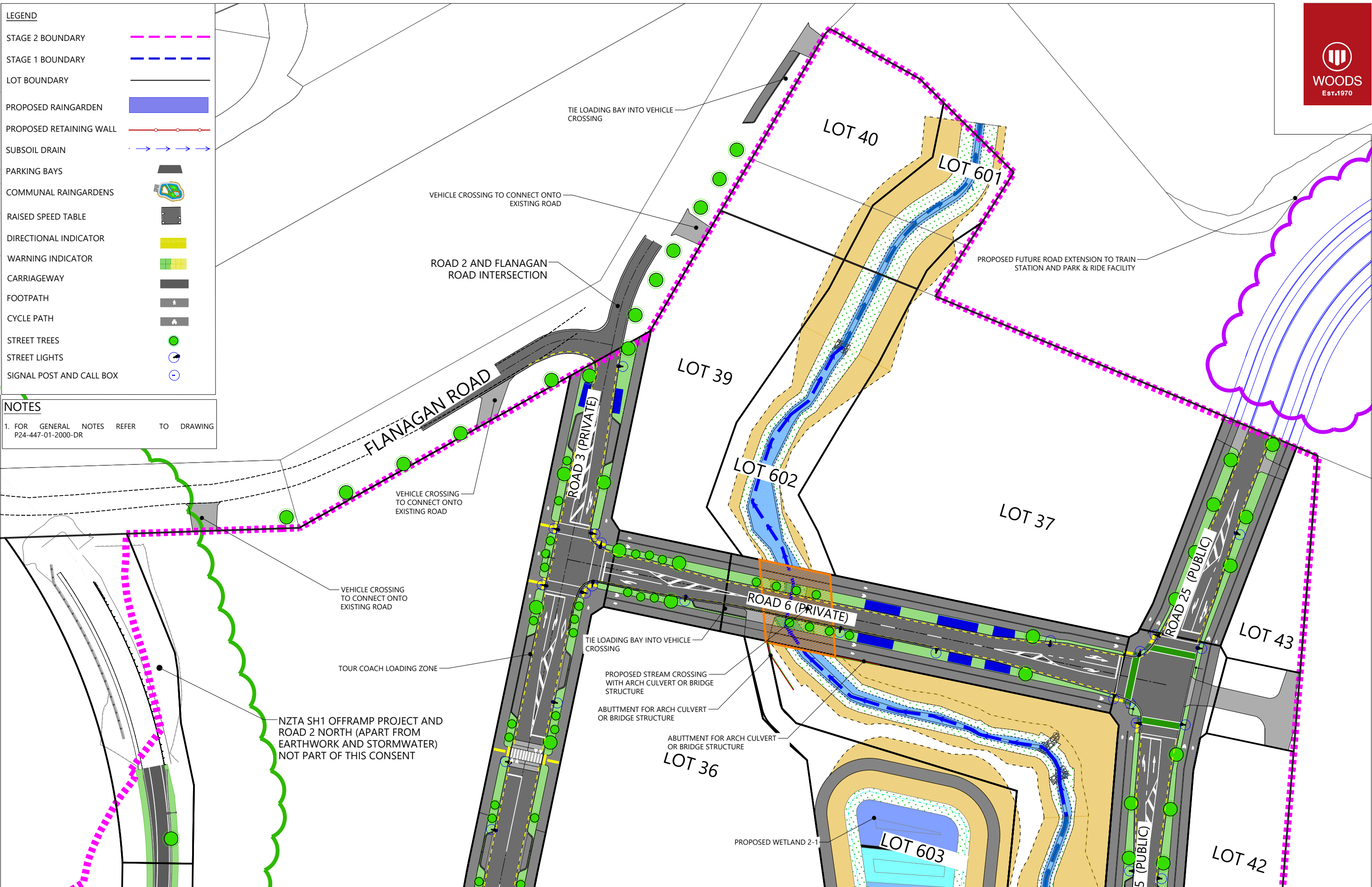
ROADING PLAN (SHEET 3 OF 4)

	STATUS	FOR FAST TRACK CONSENT		REV	
	SCALE	1:1000 @ A3			7
	COUNCIL	AUCKLAND COUNCIL			
	DWG NO	P24-447-01-2003-DR			



NOTES

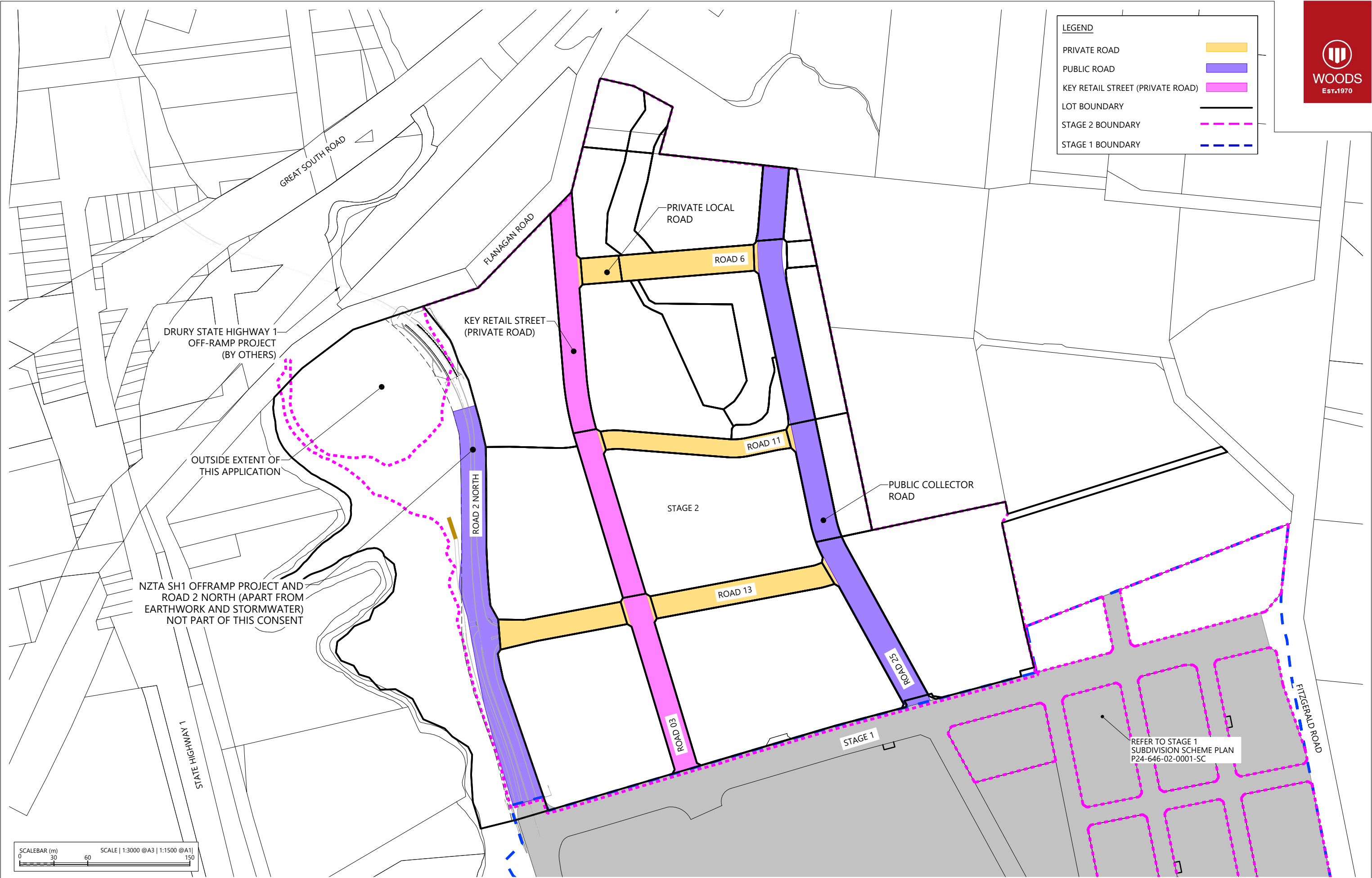
1. FOR GENERAL NOTES REFER TO DRAWING P24-447-01-2000-DR



ROADING PLAN (SHEET 4 OF 4)



STATUS	FOR FAST TRACK CONSENT	REV
SCALE	1:1000 @ A3	7
COUNCIL	AUCKLAND COUNCIL	
DWG NO	P24-447-01-2004-DR	



Plot Date: 8:56:57 am,28 February 2025, ELAWA

File: C:\1205\DATA\WP-AKL-APP-02\P24-447 - DRURY CENTRE - STAGE 2_2214002 DRAWINGS\01 ENG\P24-447-01-2030-RD_ROAD HIERARCHY PLANDWG

REVISION DETAILS					INT	DATE	SURVEYED	
2	ISSUED FOR 50% DESIGN	NS	22/11/24	DESIGNED	NS			
3	ISSUED FOR 90% DESIGN	NS	29/11/24	DRAWN	NS			
4	ISSUED FOR 99% SUBMISSION	EW	10/02/25	CHECKED	GW			
5	ISSUED FOR FAST TRACK CONSENT	EW	21/02/25	APPROVED	GW			



BUILDING B, LEVEL 1
8 NUGENT ST, GRAFTON,
AUCKLAND 1023
+64 9 308 9229
[WOODS.CO.NZ](https://www.woods.co.nz)



DRURY CENTRE-STAGE 2

ROAD HIERARCHY PLAN



STATUS	FOR FAST TRACK CONSENT	REV
SCALE	1:3000 @ A3	5
COUNCIL	AUCKLAND COUNCIL	
DWG NO	P24-447-01-2030-RD	