

Legend

Culvert

Masterplan

1D River Extent

Drury Centre Stage 2

Pre-Development Flood Extent

Water Level Difference

< -300mm

-300mm to -100mm

-100mm to -50mm

-50mm to 50mm

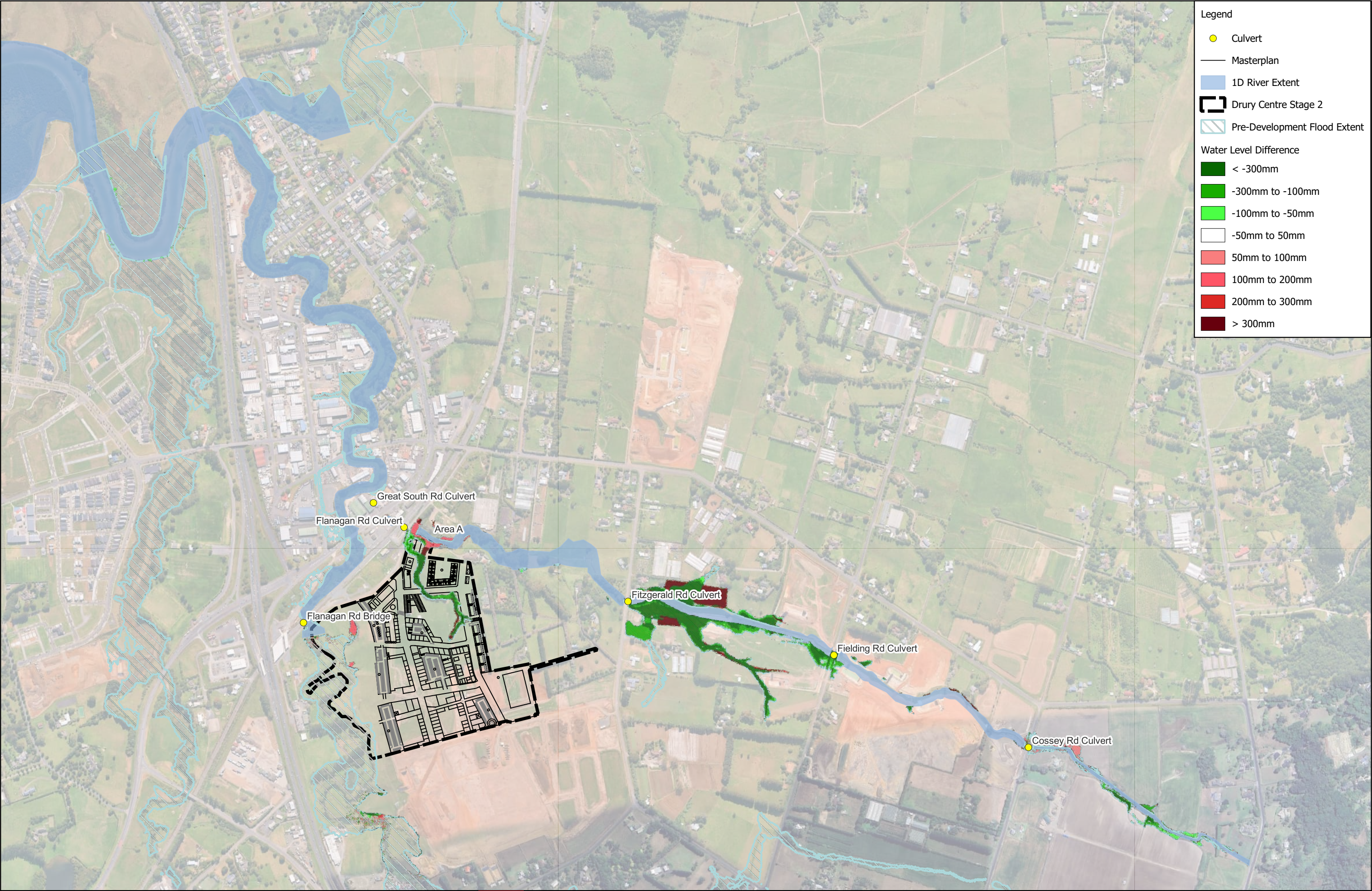
50mm to 100mm

100mm to 200mm

200mm to 300mm

> 300mm

REVISION DETAILS		INT	DATE	SURVEYED	-	8 NUGENT STREET, GRAFTON, AUCKLAND 1023		P24-447 - Drury Centre - Stage 2 Fast Track Water Level Difference Post Development vs Pre Development 2yr CC (3.8°C)		STATUS	ISSUED FOR INFORMATION	REV
1.0	For Information	-	18/07/2025	DESIGNED	-					SCALE	NTS	1.0
-	-	-	-	DRAWN	JO					COUNCIL	AUCKLAND COUNCIL	
-	-	-	-	CHECKED	RN					SHEET	P24-447-SKT-0003	
				APPROVED	-					WOODS.CO.NZ		



Legend

Culvert

Masterplan

1D River Extent

Drury Centre Stage 2

Pre-Development Flood Extent

Water Level Difference

< -300mm

-300mm to -100mm

-100mm to -50mm

-50mm to 50mm

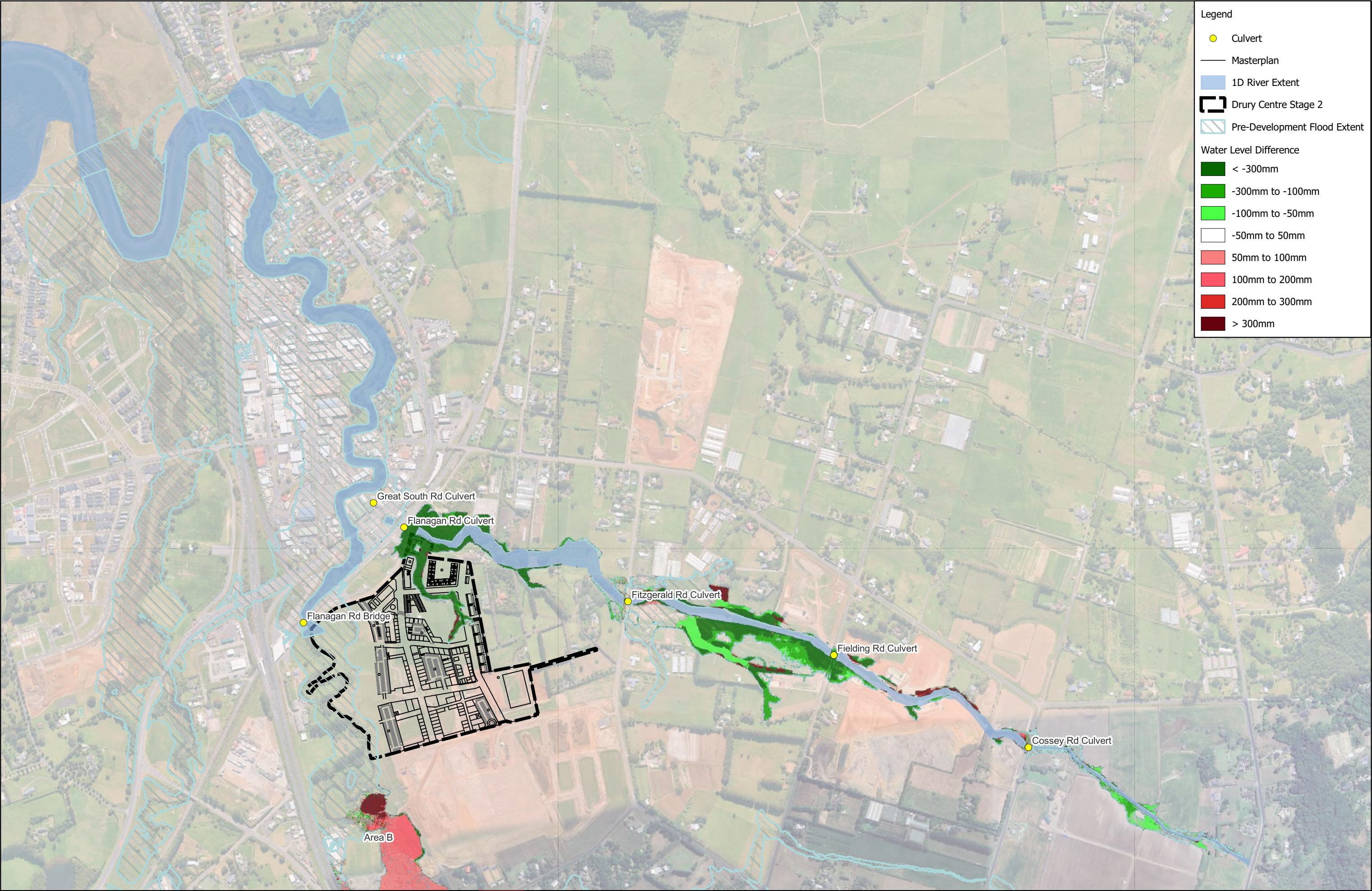
50mm to 100mm

100mm to 200mm

200mm to 300mm

> 300mm

REVISION DETAILS		INT	DATE	SURVEYED	-	8 NUGENT STREET, GRAFTON, AUCKLAND 1023		P24-447 - Drury Centre - Stage 2 Fast Track Water Level Difference Post Development vs Pre Development 10yr CC (2.1°C)		STATUS	ISSUED FOR INFORMATION	REV
1.0	For Information	-	18/07/2025	DESIGNED	-					SCALE	NTS	1.0
-	-	-	-	DRAWN	JO					COUNCIL	AUCKLAND COUNCIL	
-	-	-	-	CHECKED	RN							
				APPROVED	-							



Legend

Culvert

Masterplan

1D River Extent

Drury Centre Stage 2

Pre-Development Flood Extent

Water Level Difference

< -300mm

-300mm to -100mm

-100mm to -50mm

-50mm to 50mm

50mm to 100mm

100mm to 200mm

200mm to 300mm

> 300mm

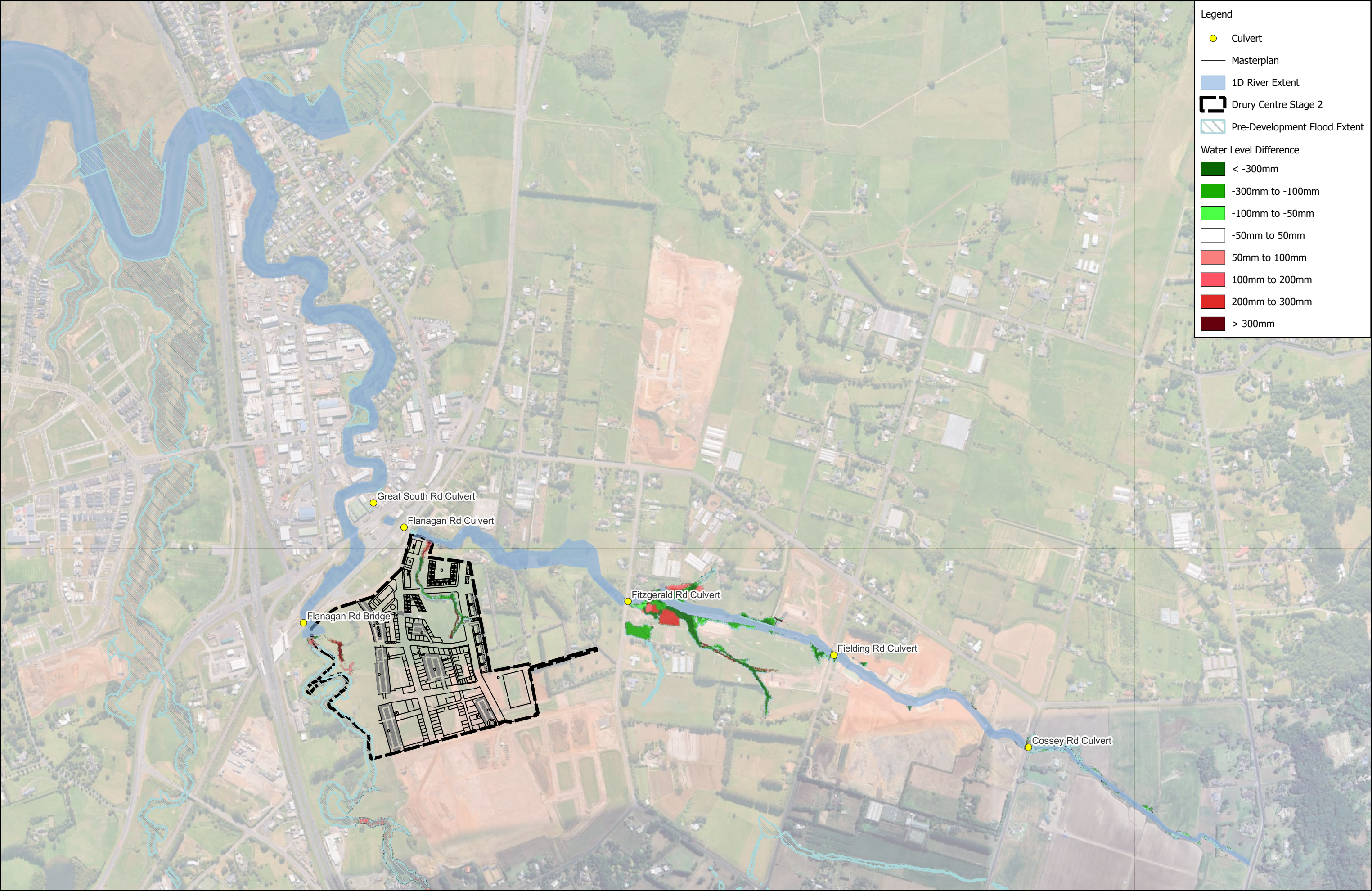
REVISION DETAILS		INT	DATE	SURVEYED	-	8 NUGENT STREET, GRAFTON, AUCKLAND 1023
1.0	For Information	-	18/07/2025	DESIGNED	-	
-	-	-	-	DRAWN	JO	
-	-	-	-	CHECKED	RN	
-	-	-	-	APPROVED	-	



P24-447 - Drury Centre - Stage 2 Fast Track
Water Level Difference
Post Development vs Pre Development 100yr CC (3.8°C)



STATUS	ISSUED FOR INFORMATION	REV
SCALE	NTS	1.0
COUNCIL	AUCKLAND COUNCIL	
SHEET	P24-447-SKT-0009	



Legend

Culvert

Masterplan

1D River Extent

Drury Centre Stage 2

Pre-Development Flood Extent

Water Level Difference

< -300mm

-300mm to -100mm

-100mm to -50mm

-50mm to 50mm

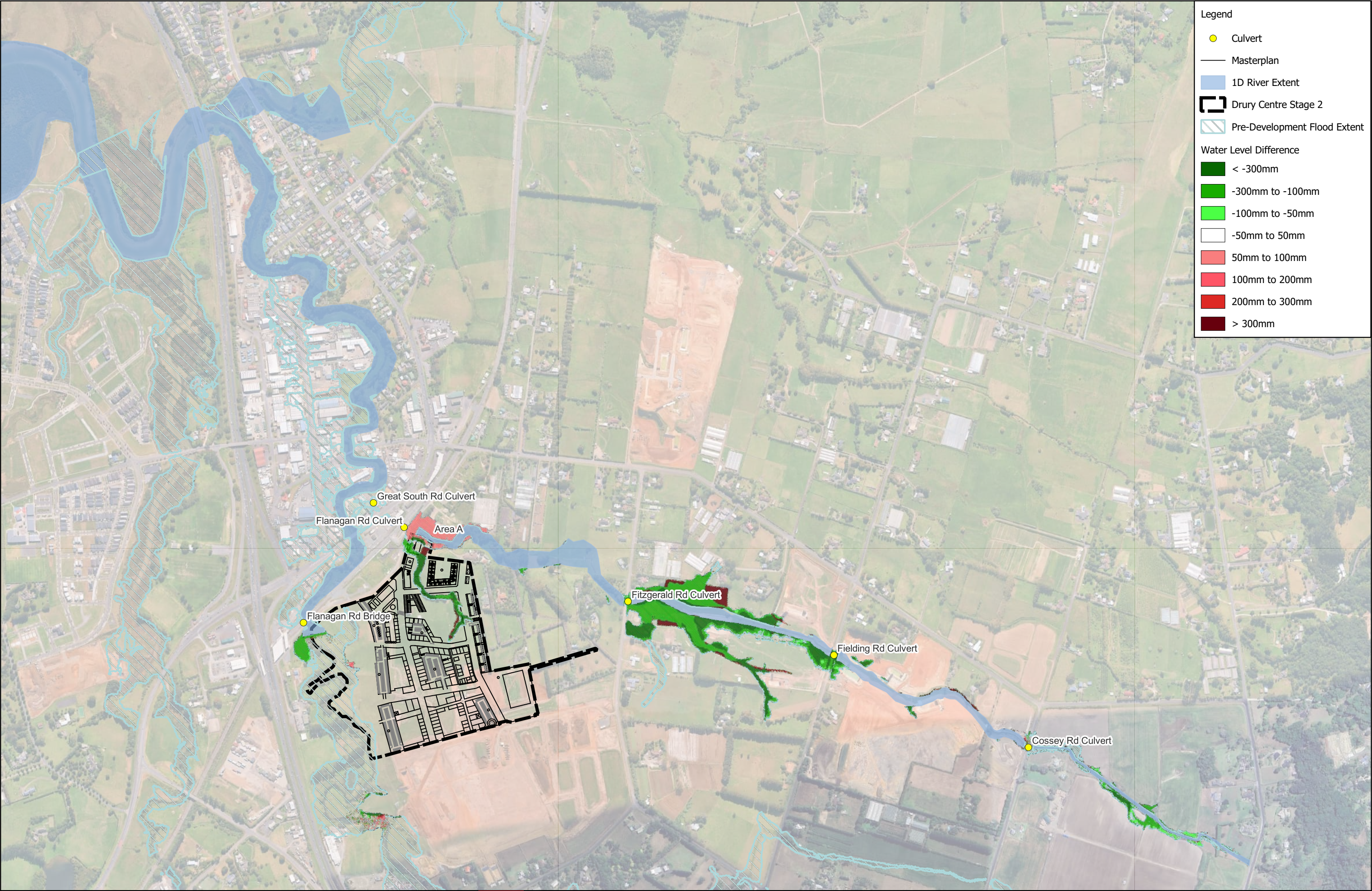
50mm to 100mm

100mm to 200mm

200mm to 300mm

> 300mm

REVISION DETAILS		INT	DATE	SURVEYED	-	8 NUGENT STREET, GRAFTON, AUCKLAND 1023		P24-447 - Drury Centre - Stage 2 Fast Track Water Level Difference Post Development with FH Stage 1 vs Pre Development 2yr No CC		STATUS	ISSUED FOR INFORMATION	REV
1.0	For Information	-	18/07/2025	DESIGNED	-					SCALE	NTS	1.0
-	-	-	-	DRAWN	JO					COUNCIL	AUCKLAND COUNCIL	
-	-	-	-	CHECKED	RN					SHEET	P24-447-SKT-0010	
				APPROVED	-					WOODS.CO.NZ		



Legend

Culvert

Masterplan

1D River Extent

Drury Centre Stage 2

Pre-Development Flood Extent

Water Level Difference

< -300mm

-300mm to -100mm

-100mm to -50mm

-50mm to 50mm

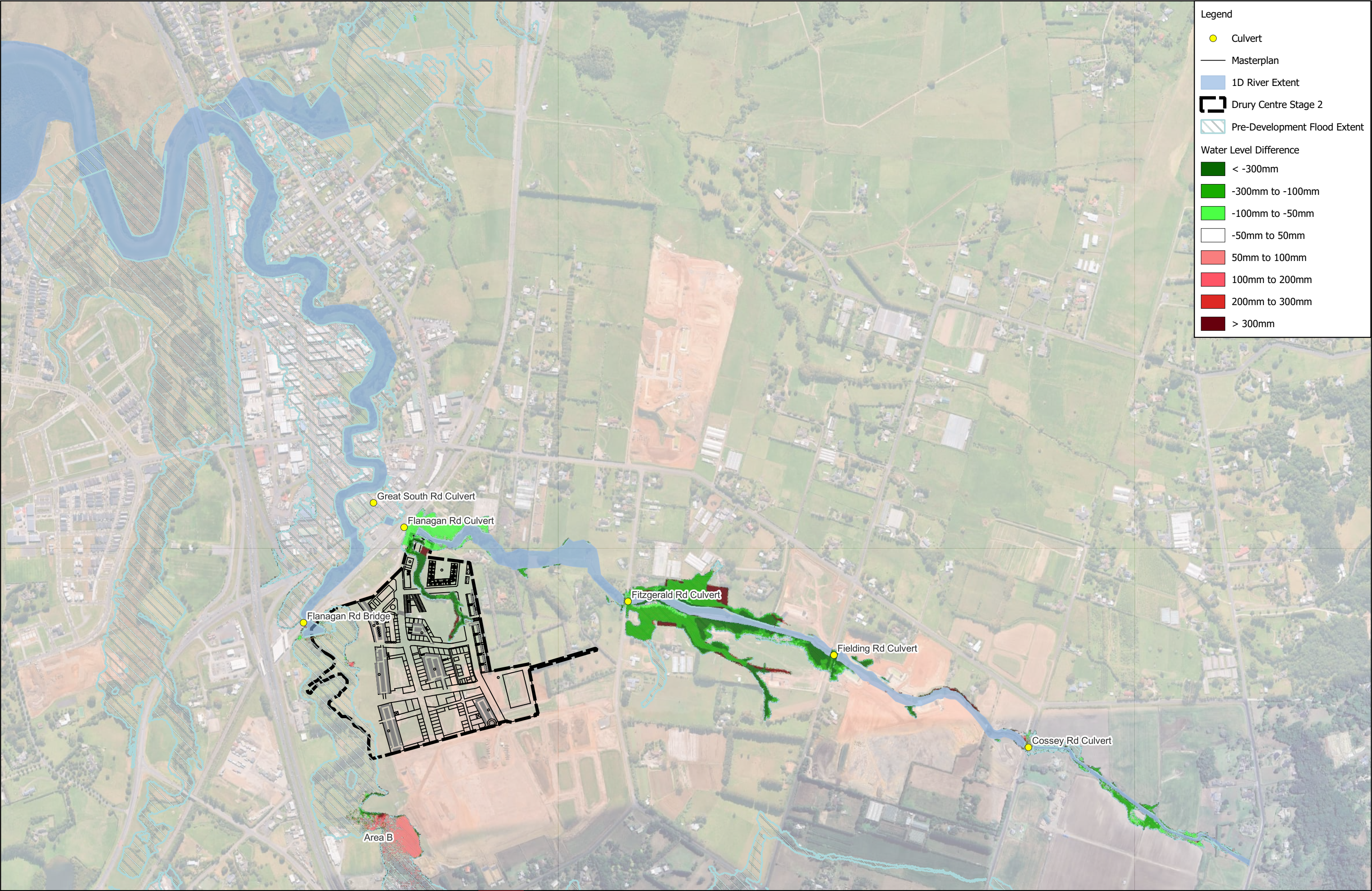
50mm to 100mm

100mm to 200mm

200mm to 300mm

> 300mm

REVISION DETAILS		INT	DATE	SURVEYED	-	<div>8 NUGENT STREET, GRAFTON, AUCKLAND 1023</div> <div>WOODS EST.1970</div>	<div>P24-447 - Drury Centre - Stage 2 Fast Track Water Level Difference Post Development with FH Stage 1 vs Pre Development 10yr CC (3.8°C)</div>		STATUS	ISSUED FOR INFORMATION	REV
1.0	For Information	-	18/07/2025	DESIGNED	-				SCALE	NTS	1.0
-	-	-	-	DRAWN	JO				COUNCIL	AUCKLAND COUNCIL	
-	-	-	-	CHECKED	RN						
				APPROVED	-				WOODS.CO.NZ		



Legend

Culvert

Masterplan

1D River Extent

Drury Centre Stage 2

Pre-Development Flood Extent

Water Level Difference

< -300mm

-300mm to -100mm

-100mm to -50mm

-50mm to 50mm

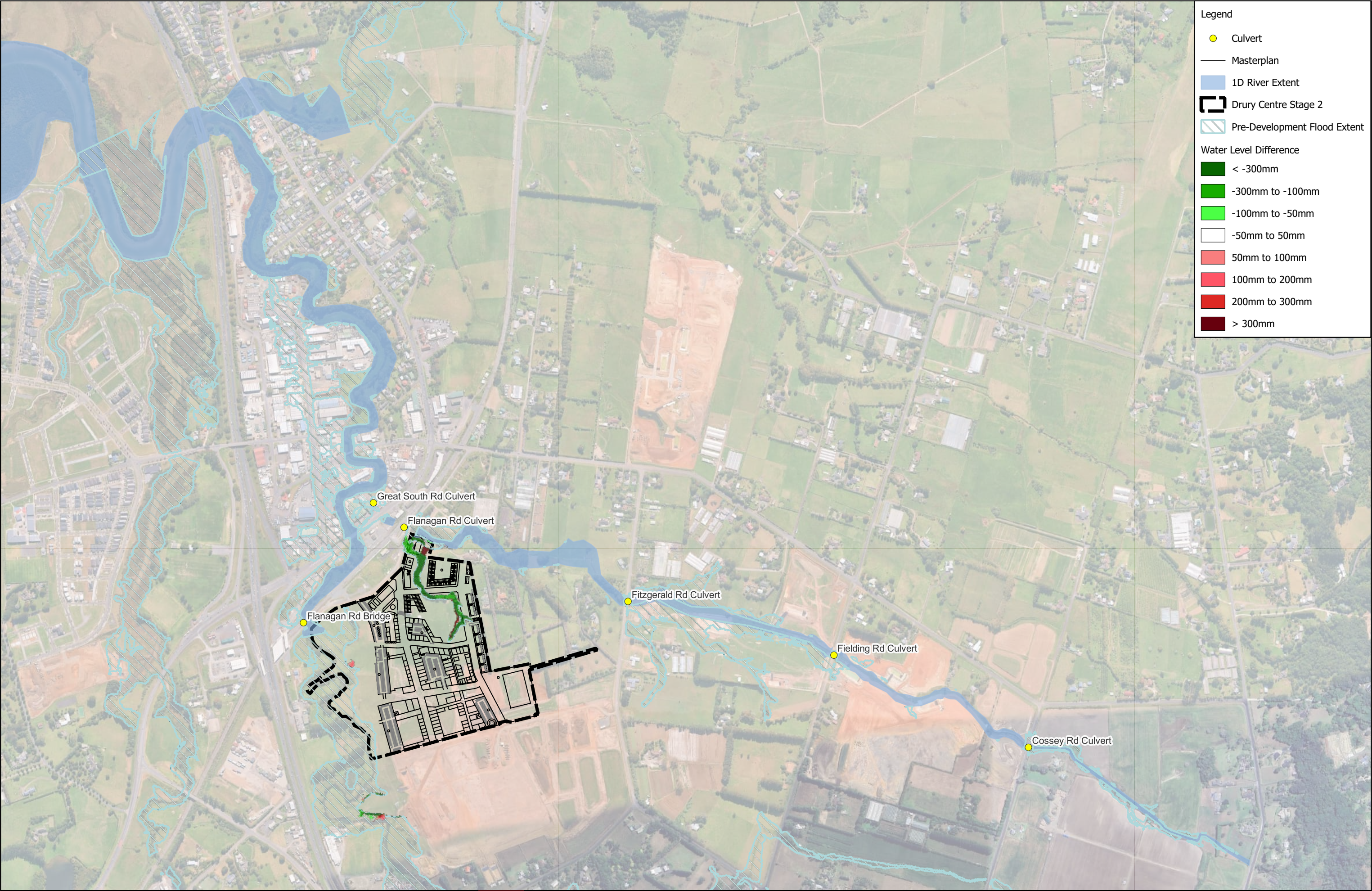
50mm to 100mm

100mm to 200mm

200mm to 300mm

> 300mm

REVISION DETAILS		INT	DATE	SURVEYED	-	8 NUGENT STREET, GRAFTON, AUCKLAND 1023		P24-447 - Drury Centre - Stage 2 Fast Track Water Level Difference Post Development with FH Stage 1 vs Pre Development 100yr No CC		STATUS	ISSUED FOR INFORMATION	REV
1.0	For Information	-	18/07/2025	DESIGNED	-					SCALE	NTS	1.0
-	-	-	-	DRAWN	JO					COUNCIL	AUCKLAND COUNCIL	
-	-	-	-	CHECKED	RN							
				APPROVED	-							



Legend

Culvert

Masterplan

1D River Extent

Drury Centre Stage 2

Pre-Development Flood Extent

Water Level Difference

< -300mm

-300mm to -100mm

-100mm to -50mm

-50mm to 50mm

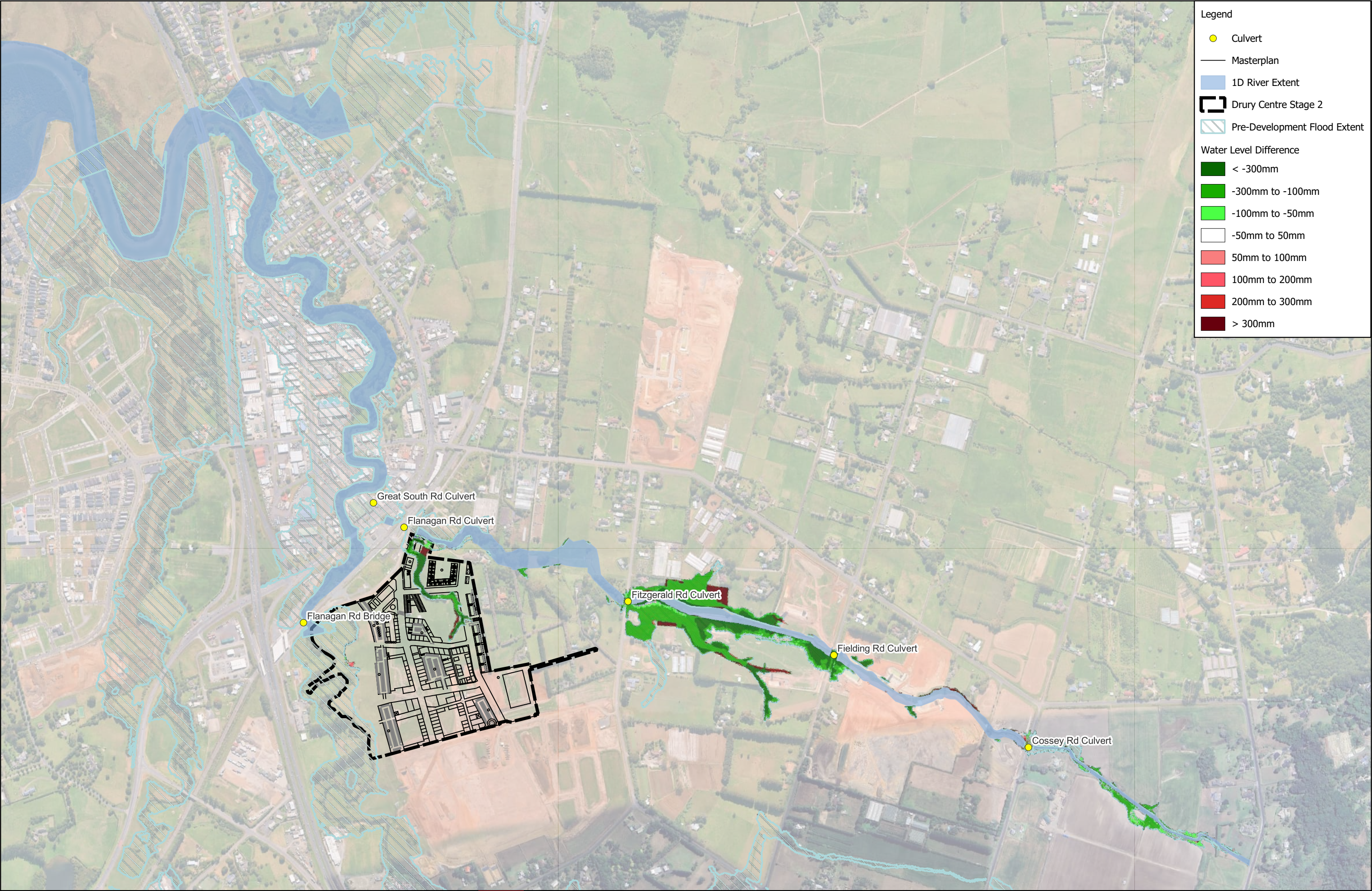
50mm to 100mm

100mm to 200mm

200mm to 300mm

> 300mm

REVISION DETAILS		INT	DATE	SURVEYED	-	8 NUGENT STREET, GRAFTON, AUCKLAND 1023		P24-447 - Drury Centre - Stage 2 Fast Track Water Level Difference Post Development with DC Stage 1&2 Only vs Pre Development 10yr CC (3.8°C)		STATUS	ISSUED FOR INFORMATION	REV
1.0	For Information	-	18/07/2025	DESIGNED	-					SCALE	NTS	1.0
-	-	-	-	DRAWN	JO					COUNCIL	AUCKLAND COUNCIL	
-	-	-	-	CHECKED	RN					SHEET	P24-447-SKT-0021	
				APPROVED	-					WOODS.CO.NZ		



Legend

Culvert

Masterplan

1D River Extent

Drury Centre Stage 2

Pre-Development Flood Extent

Water Level Difference

< -300mm

-300mm to -100mm

-100mm to -50mm

-50mm to 50mm

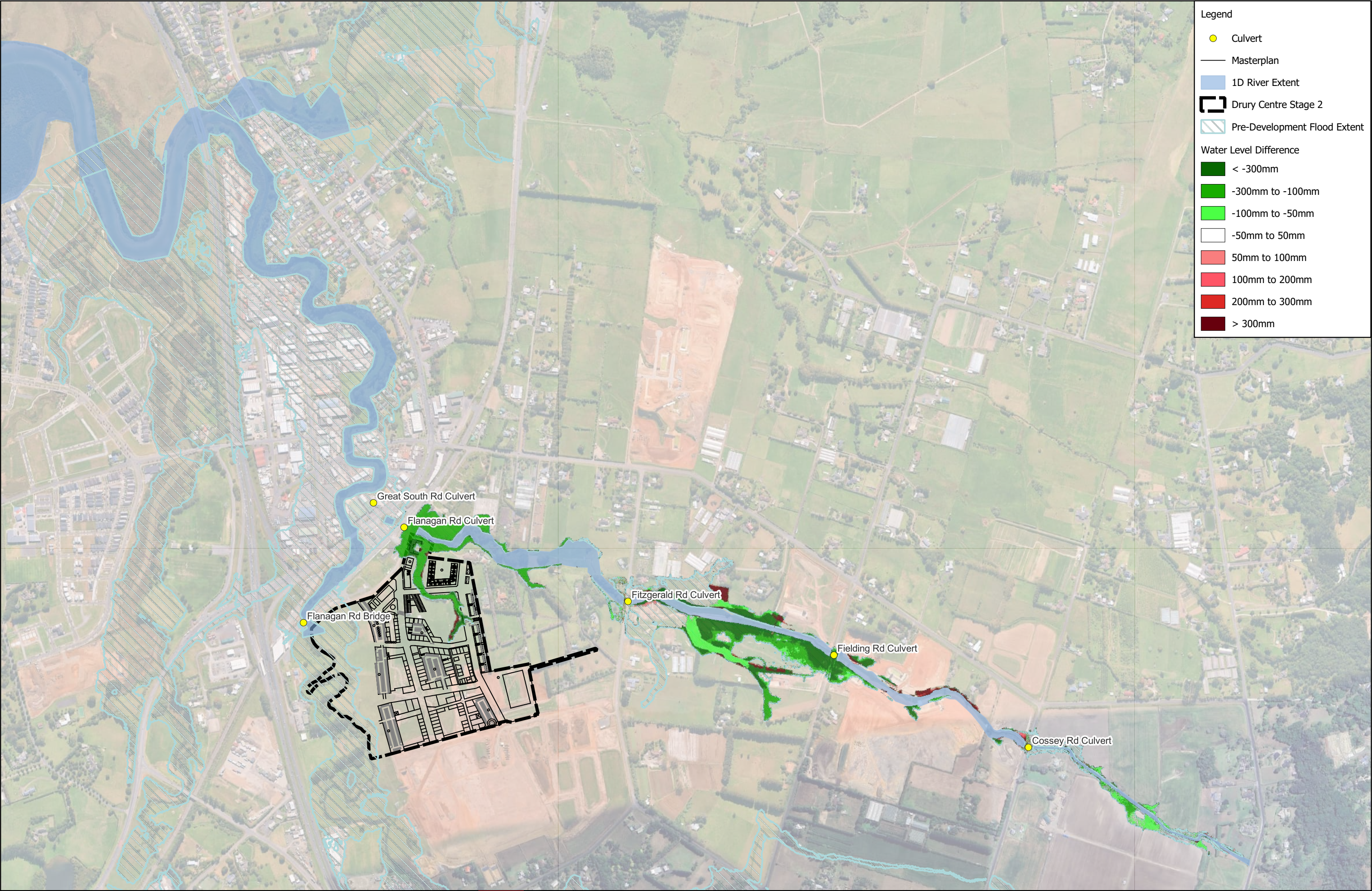
50mm to 100mm

100mm to 200mm

200mm to 300mm

> 300mm

REVISION DETAILS		INT	DATE	SURVEYED	-	8 NUGENT STREET, GRAFTON, AUCKLAND 1023		P24-447 - Drury Centre - Stage 2 Fast Track Water Level Difference Post Development vs Pre Development with DC Stage 1 100yr No CC		STATUS	ISSUED FOR INFORMATION	REV
1.0	For Information	-	18/07/2025	DESIGNED	-					SCALE	NTS	1.0
-	-	-	-	DRAWN	JO					COUNCIL	AUCKLAND COUNCIL	
-	-	-	-	CHECKED	RN							
				APPROVED	-							



Legend

Culvert

Masterplan

1D River Extent

Drury Centre Stage 2

Pre-Development Flood Extent

Water Level Difference

< -300mm

-300mm to -100mm

-100mm to -50mm

-50mm to 50mm

50mm to 100mm

100mm to 200mm

200mm to 300mm

> 300mm

REVISION DETAILS		INT	DATE	SURVEYED	-	<div>8 NUGENT STREET, GRAFTON, AUCKLAND 1023</div> <div>WOODS EST.1970</div>	<div>P24-447 - Drury Centre - Stage 2 Fast Track</div> <div>Water Level Difference</div> <div>Post Development vs Pre Development with DC Stage 1 100yr CC (3.8°C)</div>		STATUS	ISSUED FOR INFORMATION	REV
1.0	For Information	-	18/07/2025	DESIGNED	-				SCALE	NTS	1.0
-	-	-	-	DRAWN	JO				COUNCIL	AUCKLAND COUNCIL	
-	-	-	-	CHECKED	RN						
				APPROVED	-				WOODS.CO.NZ		
									SHEET	P24-447-SKT-0024	