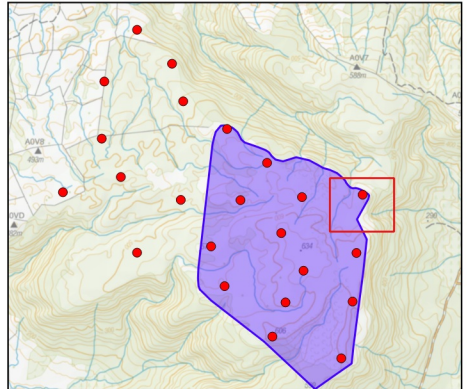


Map Title:
Catchments - F

Project:
Southland Wind Farm (Jedburgh Station Plateau (JSP))

Client:
Contact Energy



Legend

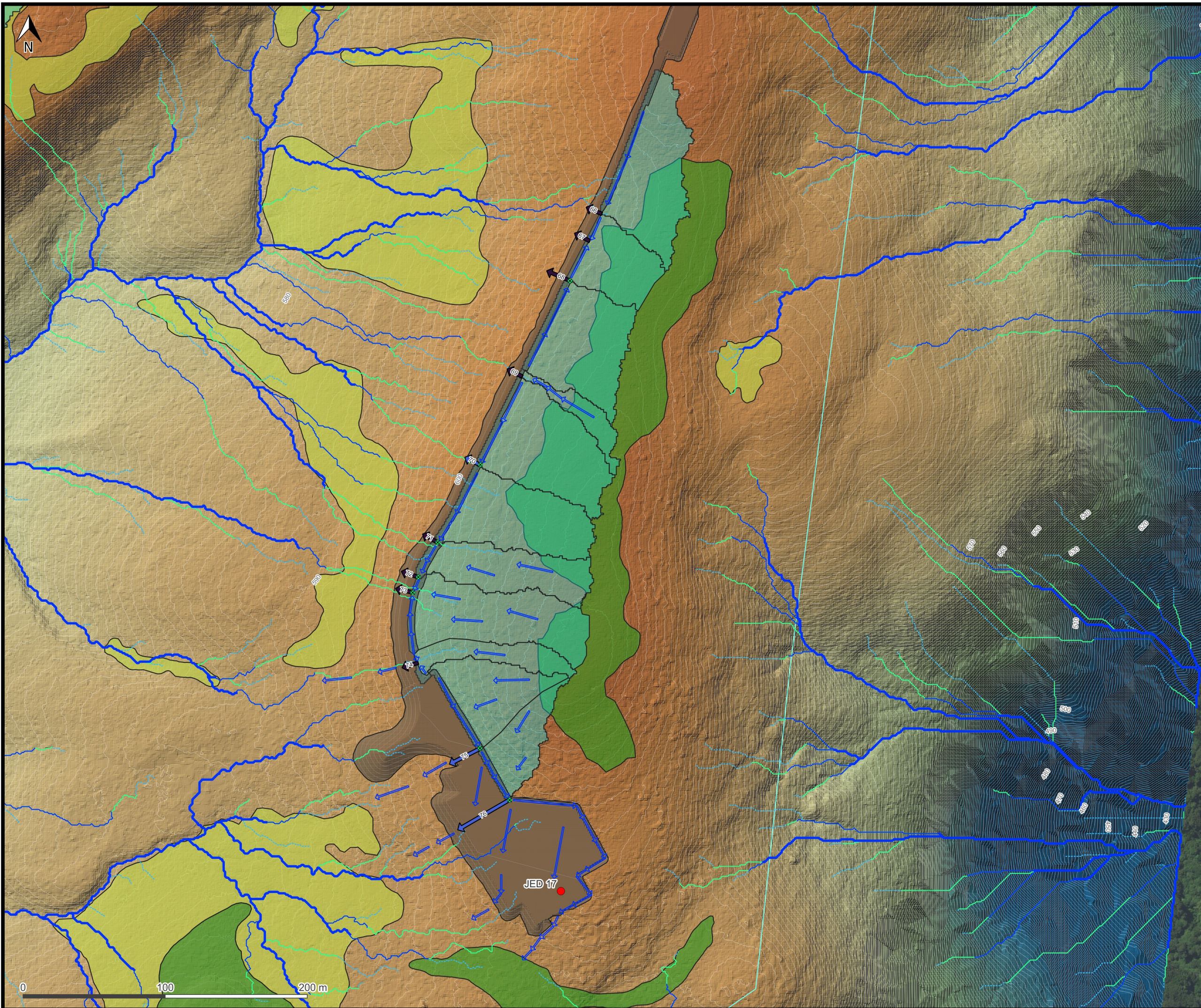
- Proposed Wind Turbine
- Scruffy Dome/Grate
- Proposed 1 m Contour
- Culvert (Diameter mm)
 - 160
 - 225
 - 300
 - 1200
- Flow Direction
- Clay Bund
- Existing OLFP (>1,000 m2 catchment)
- Existing OLFP (>1,500 m2 catchment)
- Existing OLFP (>2,500 m2 catchment)
- Existing OLFP (>5,000 m2 catchment)
- Jedburgh Plateau
- Surface Water Catchment
- Earthworks Extent
- Wetland
 - Bog Wetland
 - Fen Wetland
 - Lost Wetland
- Proposed Earthworks 1 m DEM Elevation (m)
 - 635
 - 500

Data Provenance

Drawn by: Brooke James
16/06/2025

Layout & Project File
Catchments

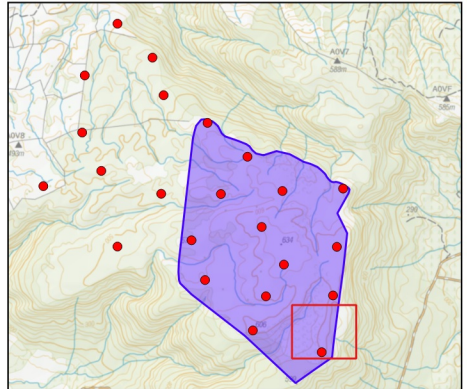
Figure 10.



Map Title:
Catchments - G

Project:
Southland Wind Farm (Jedburgh Station Plateau (JSP))

Client:
Contact Energy



Legend

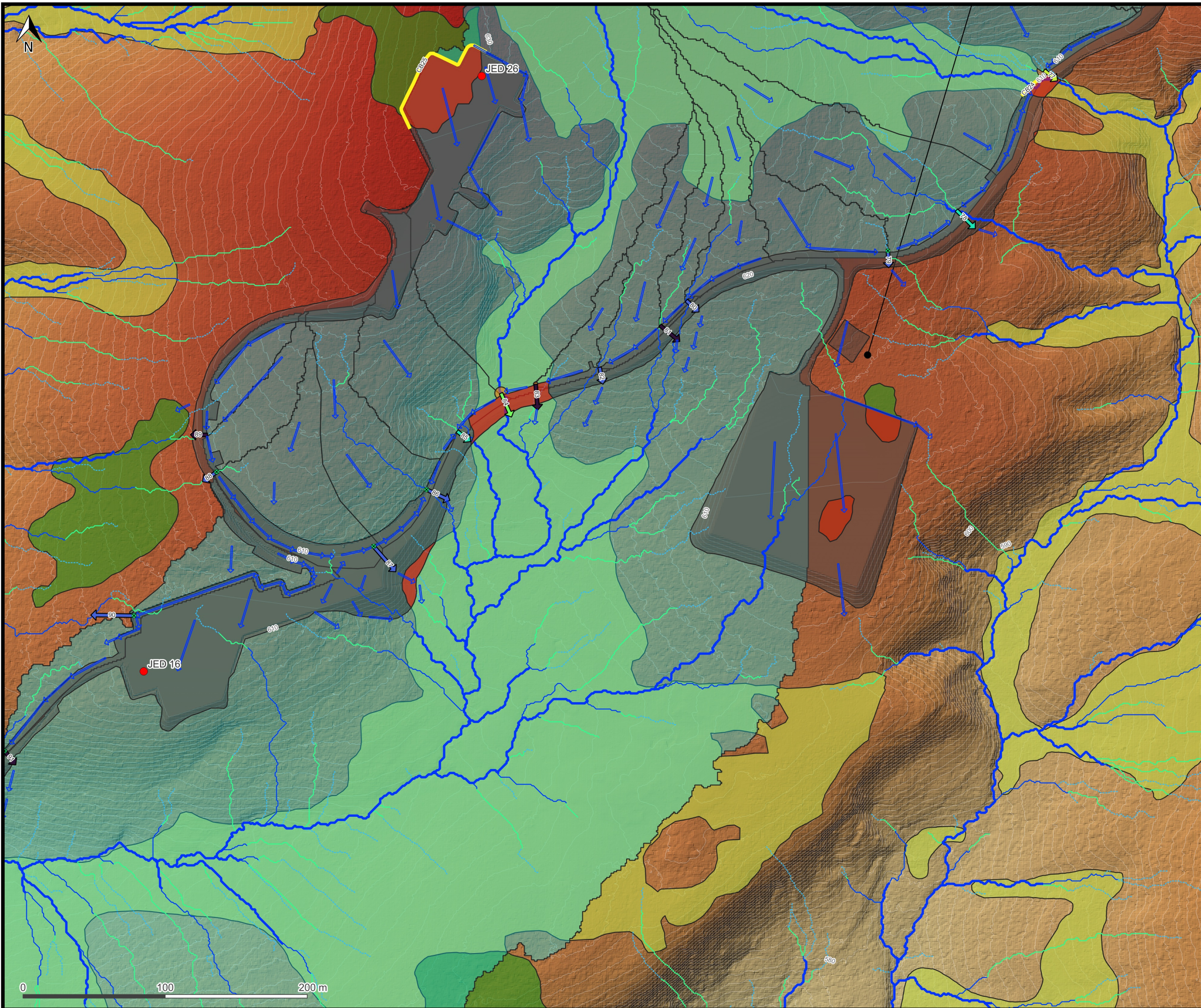
- Proposed Wind Turbine
- Scruffy Dome/Grate
- Proposed 1 m Contour
- Culvert (Diameter mm)
 - 160
 - 225
- Flow Direction
- Exisiting OLFP (>1,000 m2 catchment)
- Exisiting OLFP (>1,500 m2 catchment)
- Exisiting OLFP (>2,500 m2 catchment)
- Exisiting OLFP (>5,000 m2 catchment)
- Jedburgh Plateau
- Surface Water Catchment
- Earthworks Extent
- Wetland
 - Bog Wetland
 - Fen Wetland
- Proposed Earthworks 1 m DEM
- Elevation (m)
 - 635
 - 500

Data Provenance

Drawn by: Brooke James
16/06/2025

Layout & Project File
Catchments

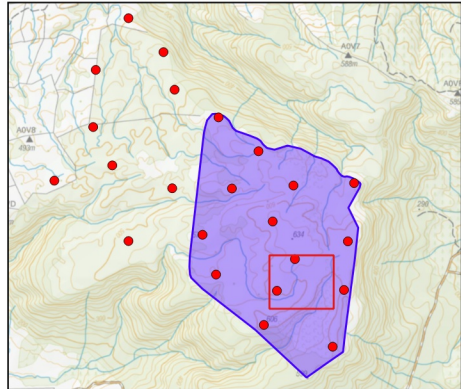
Figure 11.



Map Title:
Catchments - H

Project:
Southland Wind Farm (Jedburgh Station Plateau (JSP))

Client:
Contact Energy



Legend

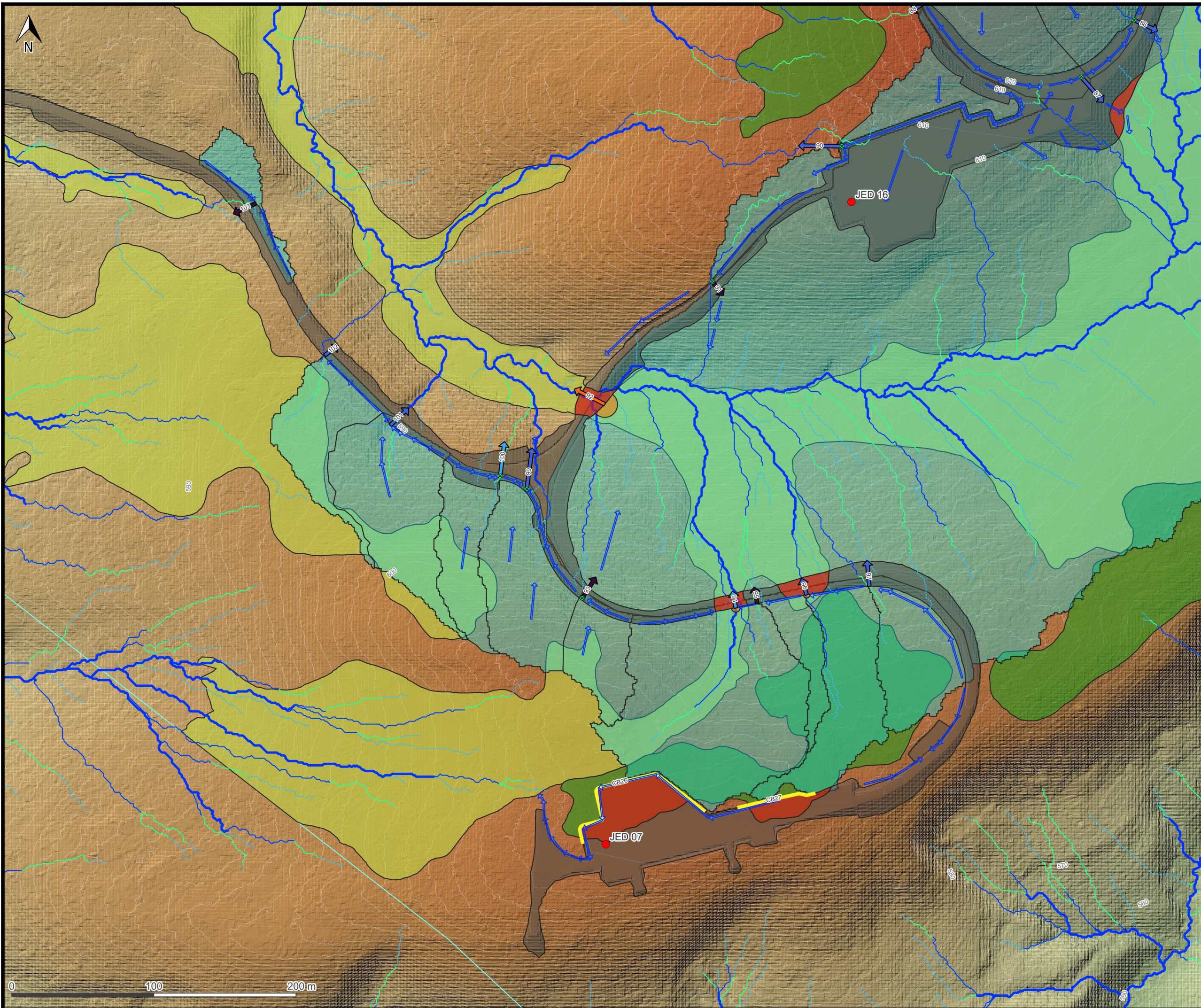
- Propsoed Wind Turbine
- Scruffy Dome/Grate
- Proposed 1 m Contour
- Flow Direction
- Culvert (Diameter mm)
 - 160
 - 225
 - 375
 - 450
 - 500
- Clay Bund
- Exisiting OLFP (>1,000 m2 catchment)
- Exisiting OLFP (>1,500 m2 catchment)
- Exisiting OLFP (>2,500 m2 catchment)
- Exisiting OLFP (>5,000 m2 catchment)
- Surface Water Catchment
- Earthworks Extent
- Wetland
 - Bog Wetland
 - Fen Wetland
 - Impaired Wetland
 - Lost Wetland
- Proposed Earthworks 1 m DEM
- Elevation (m)
 - 635
 - 500

Data Provenance

Drawn by: Brooke James
16/06/2025

Layout & Project File
Catchments

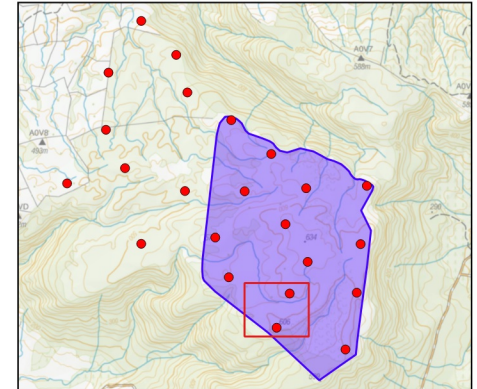
Figure 12.



Map Title:
Catchments - I

Project:
Southland Wind Farm (Jedburgh Station Plateau (JSP))

Client:
Contact Energy



- Legend**
- Proposed Wind Turbine
 - Proposed 1 m Contour
 - ✕ Scruffy Dome/Grate
 - Culvert (Diameter mm)
 - ➔ 160
 - ➔ 225
 - ➔ 300
 - ➔ 1000
 - ➔ Flow Direction
 - Clay Bund
 - - - Existing OLFP (>1,000 m2 catchment)
 - - - Existing OLFP (>1,500 m2 catchment)
 - - - Existing OLFP (>2,500 m2 catchment)
 - - - Existing OLFP (>5,000 m2 catchment)
 - Jedburgh Plateau
 - Surface Water Catchment
 - Earthworks Extent
 - Wetland
 - Bog Wetland
 - Fen Wetland
 - Impaired Wetland
 - Lost Wetland
 - Proposed Earthworks 1 m DEM
 - Elevation (m)
 - 635
 - 500

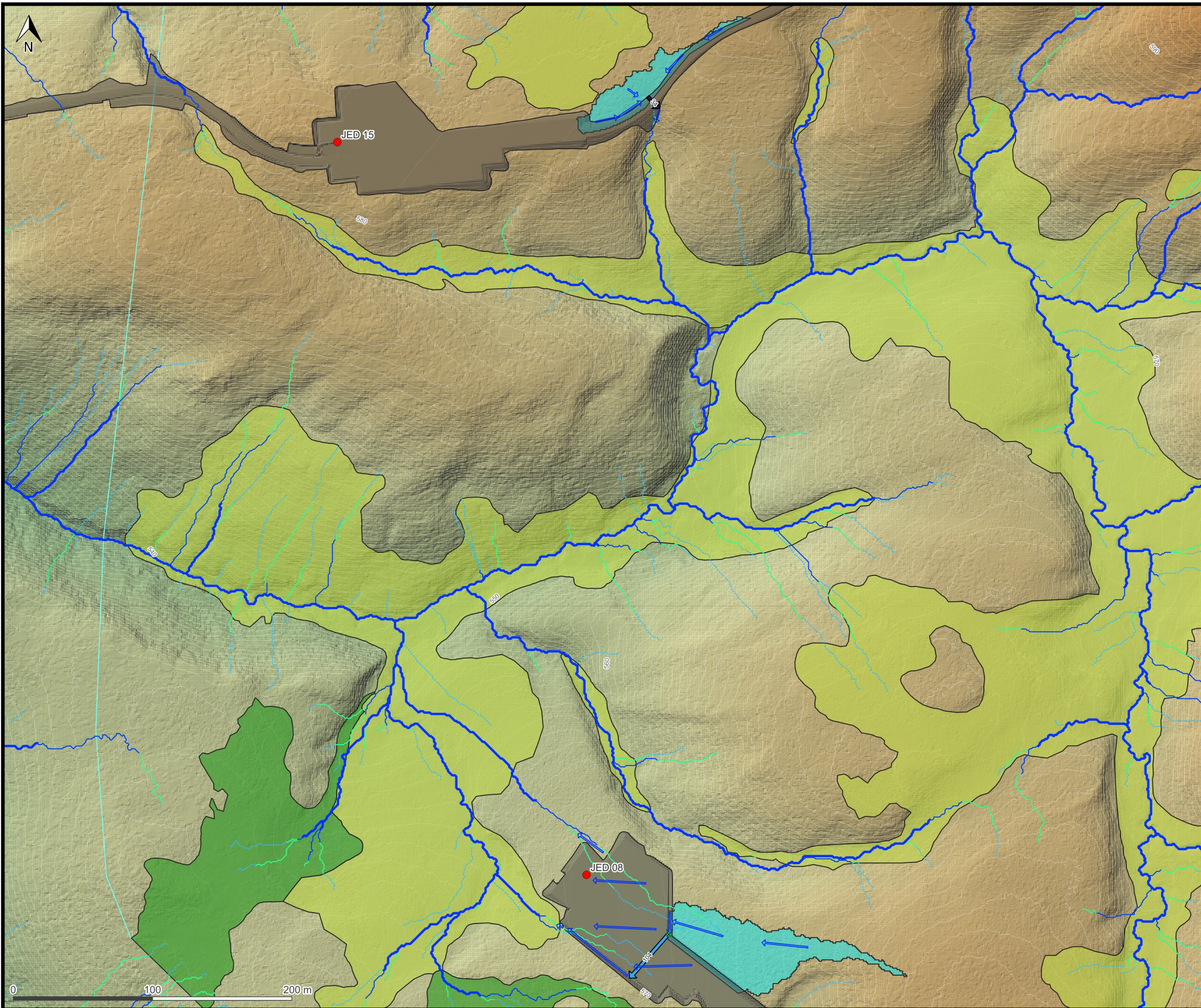
Data Provenance

Drawn by: Brooke James
16/06/2025

Layout & Project File
Catchments



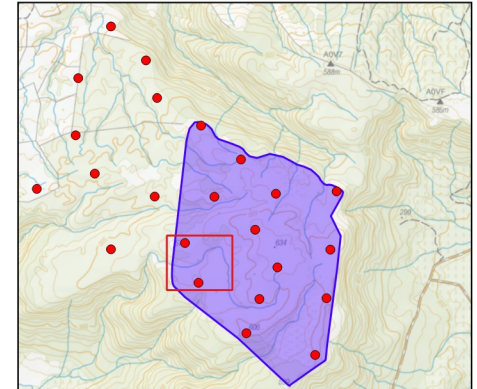
Figure 13.



Map Title:
Catchments - J

Project:
Southland Wind Farm (Jedburgh Station Plateau (JSP))

Client:
Contact Energy



Legend

- Proposed Wind Turbine
- Scruffy Dome/Grate
- Proposed 1 m Contour
- Culvert (Diameter mm)
 - 160
 - 300
- Flow Direction
- Existing OLFP (>1,000 m2 catchment)
- Existing OLFP (>1,500 m2 catchment)
- Existing OLFP (>2,500 m2 catchment)
- Existing OLFP (>5,000 m2 catchment)
- Jedburgh Plateau
- Surface Water Catchment
- Earthworks Extent
- Wetland
 - Bog Wetland
 - Fen Wetland
- Proposed Earthworks 1 m DEM Elevation (m)
 - 635
 - 500

Data Provenance

Drawn by: Brooke James
16/06/2025

Layout & Project File
Catchments

Figure 14.