



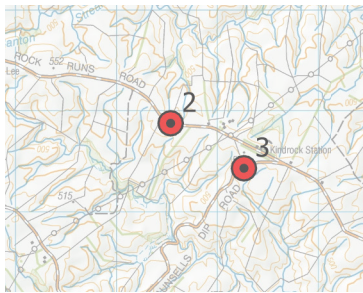
Viewpoint 2 - Proposed Changes Stage 2

View looking west from Black Rock Runs Road, approximately 500m west of Rapid No. 574.



Isthmus.

Puke Kapo Hau | Mahinerangi Wind Farm | Tararua Wind Power Ltd | October 2025



Isthmus.

Puke Kapo Hau | Mahinerangi Wind Farm | Tararua Wind Power Ltd | October 2025

Original Photo | Stitched image | DSLR Nikon D810 50mm lens | SB | 0855hrs 11 December 2024 | 1364534E 4927879N (NZTM) | Viewpoint Elevation: 521m

Field of view | Approximately 110° horizontal and 34° vertical field of view

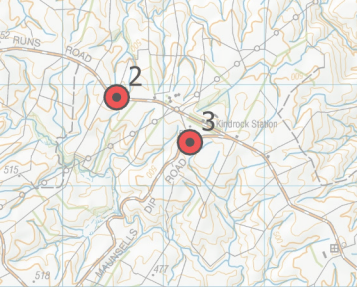
Scale | Print images across 2 x A3 pages for correct scale at 400m reading distance | Use scale bar to adjust sizing on screen for correct scale at 400m reading distance

5cm



Viewpoint 3 - Realistic Consented Stage 2

View to the west from Maunsells Dip Road, approximately 400m from the intersection with Black Rock Runs Road.



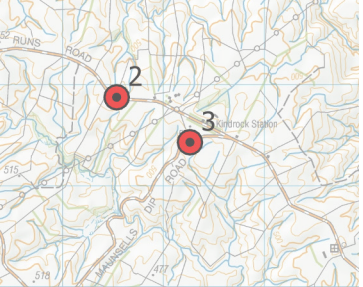
Original Photo | Stitched image | DSLR Nikon D810 50mm lens | SB | 1221hrs 11 December 2024 | 1365260E 4927433N (NZTM) | Viewpoint Elevation: 532m
Field of view | Approximately 110° horizontal and 34° vertical field of view
Scale | Print images across 2 x A3 pages for correct scale at 400m reading distance | Use scale bar to adjust sizing on screen for correct scale at 400m reading distance





Viewpoint 3 - Proposed Changes Stage 2

View to the west from Maunsells Dip Road, approximately 400m from the intersection with Black Rock Runs Road.



Original Photo | Stitched image | DSLR Nikon D810 50mm lens | SB | 1221hrs 11 December 2024 | 1365260E 4927433N (NZTM) | Viewpoint Elevation: 532m
Field of view | Approximately 110° horizontal and 34° vertical field of view
Scale | Print images across 2 x A3 pages for correct scale at 400m reading distance | Use scale bar to adjust sizing on screen for correct scale at 400m reading distance





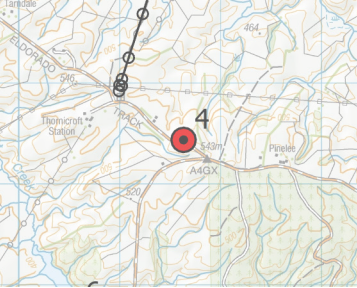
Viewpoint 4 - Realistic Consented Stage 2

View to the north from Eldorado Track, approximately 300m from the intersection with Mahinerangi Road.



Isthmus.

Puke Kapo Hau | Mahinerangi Wind Farm | Tararua Wind Power Ltd | October 2025



Isthmus.

Puke Kapo Hau | Mahinerangi Wind Farm | Tararua Wind Power Ltd | October 2025

Original Photo | Stitched image | DSLR Nikon D810 50mm lens | SB | 1319hrs 11 December 2024 | 1361629E 4922440N (NZTM) | Viewpoint Elevation: 538m
Field of view | Approximately 110° horizontal and 34° vertical field of view
Scale | Print images across 2 x A3 pages for correct scale at 400m reading distance | Use scale bar to adjust sizing on screen for correct scale at 400m reading distance

5cm

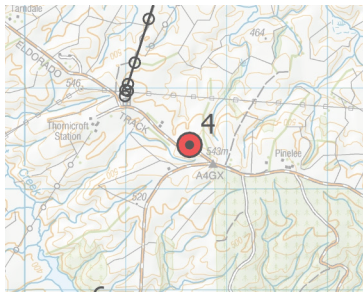


Viewpoint 4 - Proposed Changes Stage 2

View to the north from Eldorado Track, approximately 300m from the intersection with Mahinerangi Road.



Isthmus.
Puke Kapo Hau | Mahinerangi Wind Farm | Tararua Wind Power Ltd | October 2025



Isthmus.
Puke Kapo Hau | Mahinerangi Wind Farm | Tararua Wind Power Ltd | October 2025

Original Photo | Stitched image | DSLR Nikon D810 50mm lens | SB | 1319hrs 11 December 2024 | 1361629E 4922440N (NZTM) | Viewpoint Elevation: 538m

Field of view | Approximately 110° horizontal and 34° vertical field of view

Scale | Print images across 2 x A3 pages for correct scale at 400m reading distance | Use scale bar to adjust sizing on screen for correct scale at 400m reading distance

5cm



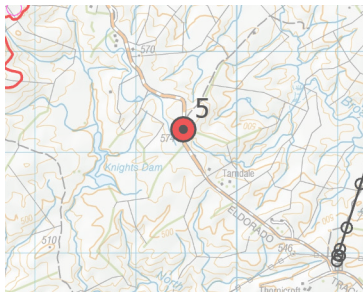
Viewpoint 5 - Realistic Consented Stage 2

View north from Eldorado Track, approximately 700m to the west of Rapid No. 256.



Isthmus.

Puke Kapo Hau | Mahinerangi Wind Farm | Tararua Wind Power Ltd | October 2025



Isthmus.

Puke Kapo Hau | Mahinerangi Wind Farm | Tararua Wind Power Ltd | October 2025

Original Photo | Stitched image | DSLR Nikon D810 50mm lens | SB | 1326hrs 11 December 2024 | 1359466E 4924230N (NZTM) | Viewpoint Elevation: 566m

Field of view | Approximately 110° horizontal and 34° vertical field of view

Scale | Print images across 2 x A3 pages for correct scale at 400m reading distance | Use scale bar to adjust sizing on screen for correct scale at 400m reading distance

5cm



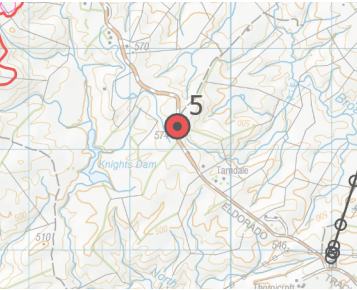
Viewpoint 5 - Proposed Changes Stage 2

View north from Eldorado Track, approximately 700m to the west of Rapid No. 256.



Isthmus.

Puke Kapo Hau | Mahinerangi Wind Farm | Tararua Wind Power Ltd | October 2025



Isthmus.

Puke Kapo Hau | Mahinerangi Wind Farm | Tararua Wind Power Ltd | October 2025

Original Photo | Stitched image | DSLR Nikon D810 50mm lens | SB | 1326hrs 11 December 2024 | 1359466E 4924230N (NZTM) | Viewpoint Elevation: 566m
Field of view | Approximately 110° horizontal and 34° vertical field of view
Scale | Print images across 2 x A3 pages for correct scale at 400m reading distance | Use scale bar to adjust sizing on screen for correct scale at 400m reading distance

5cm