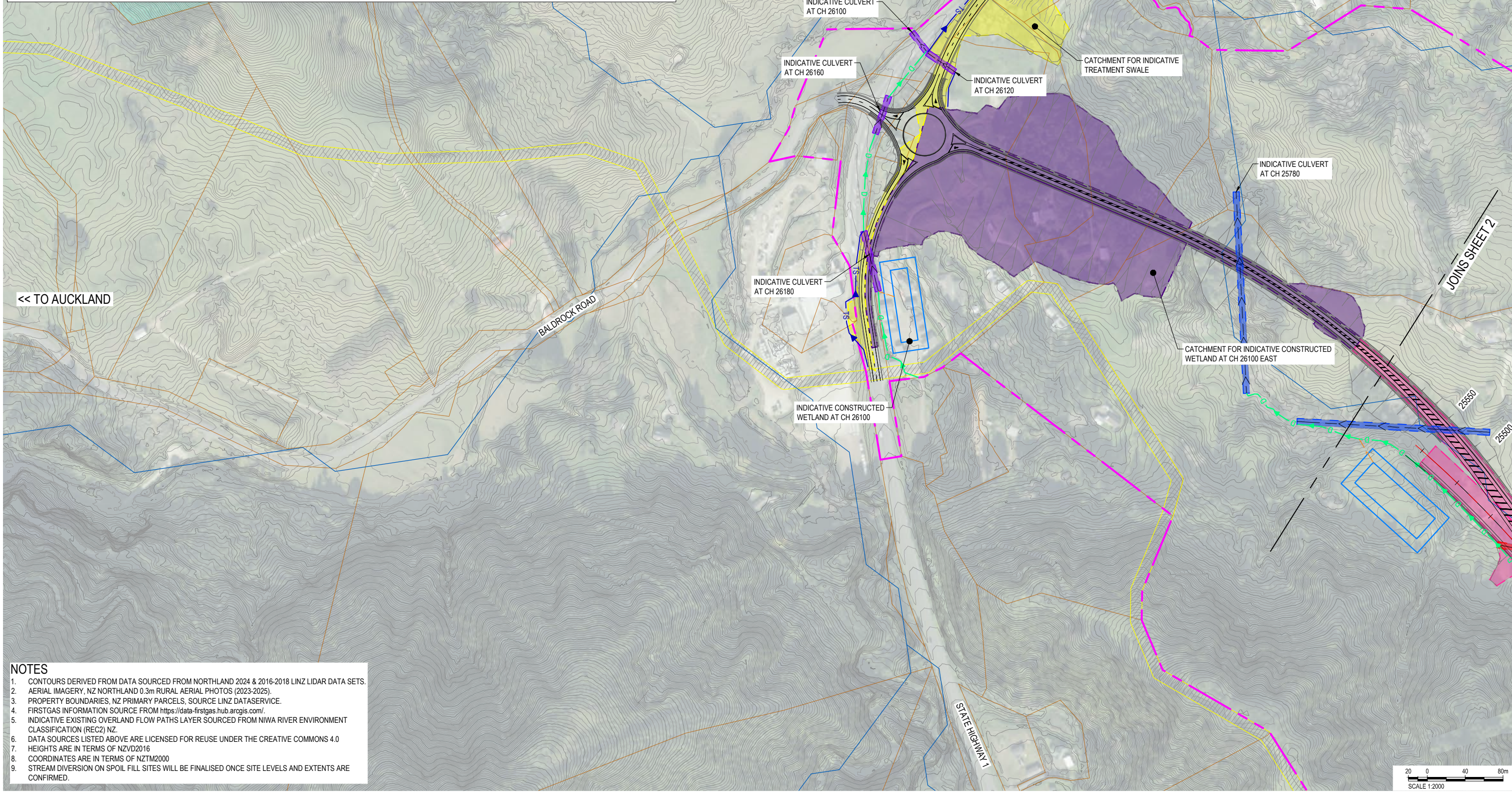
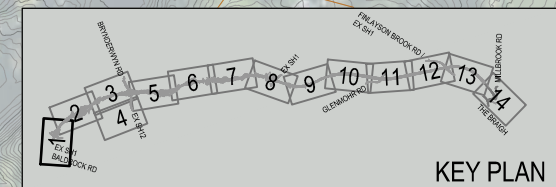


LEGEND	
PROPOSED DESIGNATION BOUNDARY (WHANGAREI DISTRICT COUNCIL)	INDICATIVE SPOIL DISPOSAL SITE
PROPOSED DESIGNATION BOUNDARY (KAIPARA DISTRICT COUNCIL)	INDICATIVE CONSTRUCTED WETLANDS
INDICATIVE FILL BATTER	INDICATIVE WETLAND SWALE
INDICATIVE CUT BATTER	INDICATIVE WETLAND DISCHARGE
HIGH POINT OF ROAD PROFILE	INDICATIVE TREATMENT SWALE
LOW POINT OF ROAD PROFILE	INDICATIVE DRAINAGE DIVERSION
STORMWATER CATCHMENT (COLOUR VARIES)	INDICATIVE CUT OFF DRAIN
INDICATIVE CENTRE LINE	INDICATIVE MAINLINE CULVERT
	INDICATIVE LOCAL ROAD CULVERT
	INDICATIVE FLUME CULVERT
	EXISTING CULVERT
	EXISTING PROPERTY BOUNDARY
	EXISTING CONTOURS
	INDICATIVE EXISTING OVERLAND FLOW PATHS
	EXISTING FIRST GAS TRANSMISSION LINE CORRIDOR
	EXISTING TRANSPOWER HENDERSON TO MARSDEN A 220KV TRANSMISSION LINE



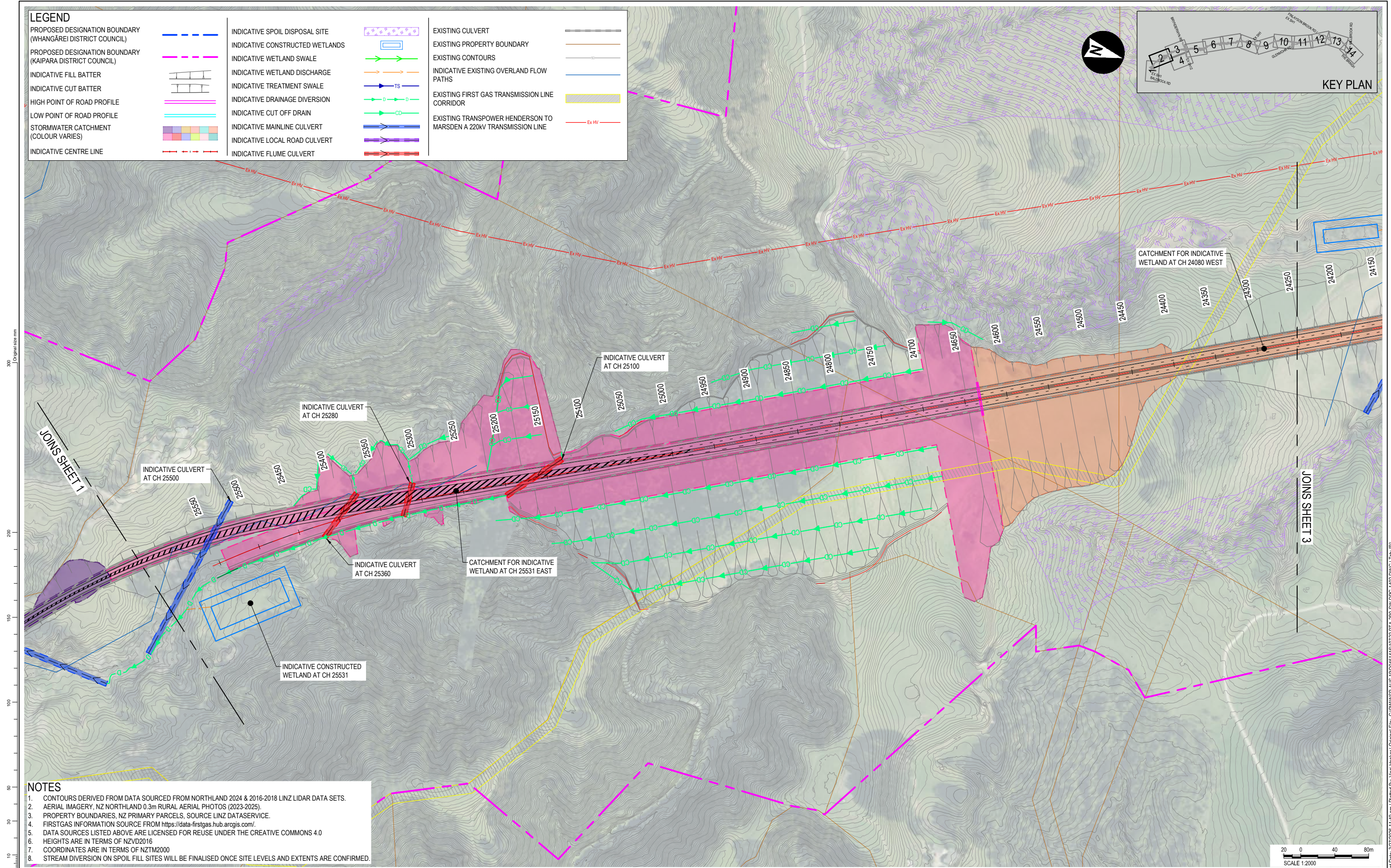
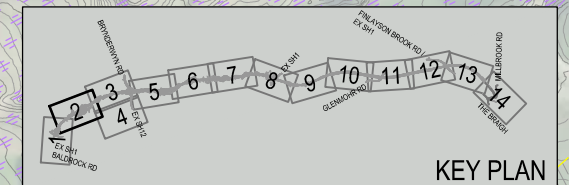
- NOTES**
1. CONTOURS DERIVED FROM DATA SOURCED FROM NORTHLAND 2024 & 2016-2018 LINZ LIDAR DATA SETS.
 2. AERIAL IMAGERY, NZ NORTHLAND 0.3m RURAL AERIAL PHOTOS (2023-2025).
 3. PROPERTY BOUNDARIES, NZ PRIMARY PARCELS, SOURCE LINZ DATASERVICE.
 4. FIRSTGAS INFORMATION SOURCE FROM <https://data-firstgas.hub.arcgis.com/>.
 5. INDICATIVE EXISTING OVERLAND FLOW PATHS LAYER SOURCED FROM NIWA RIVER ENVIRONMENT CLASSIFICATION (REC2) NZ.
 6. DATA SOURCES LISTED ABOVE ARE LICENSED FOR REUSE UNDER THE CREATIVE COMMONS 4.0
 7. HEIGHTS ARE IN TERMS OF NZVD2016
 8. COORDINATES ARE IN TERMS OF NZTM2000
 9. STREAM DIVERSION ON SPOIL FILL SITES WILL BE FINALISED ONCE SITE LEVELS AND EXTENTS ARE CONFIRMED.

PROJECT	REV	DATE	REVISION DETAILS	APPROVED	STATUS	TITLE	PROJECT INFORMATION
ALL INFORMATION SHOWN IS SUBJECT TO FINAL DESIGN AND THE DETAILS MAY CHANGE. AREAS AND MEASUREMENTS ARE SUBJECT TO SURVEY	A	18.02.26	CONSENT DESIGN FOR CLIENT REVIEW	R.D	CONSENT DESIGN	BRYNDERWYN HILLS SECTION INDICATIVE STORMWATER AND HYDROLOGY PLAN SHEET 1 OF 14	NORTHLAND CORRIDOR
	B	27.03.26	DESIGN ISSUE FOR LODGEMENT	R.D			
					APPROVED		DOCUMENT CODE
					R.DUPLLOY		10722-PTA-2B0-SW-DRG-1401
					APPROVED BY		SCALE
					R.DUPLLOY		1:2000
					DATE		SIZE
					27.03.26		A1
							REFERENCE No.
							SW-1401
							REV
							B

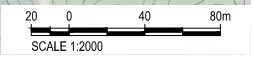
COORDINATE SYSTEM: NZTM 2000, VERTICAL DATUM: NZVD2016
 ORIGINAL IN COLOUR DETAIL MAY BE LOST IF COPIED

Plot Date: 3/27/2026 11:47 am | Plotted By: Vica Hooker | Original File: C:\PW\SW\SP-AUS-19000451416\10722-PTA-2B0-SW-DRG-1401.DWG | Tab: [B]

LEGEND	
PROPOSED DESIGNATION BOUNDARY (WHANGAREI DISTRICT COUNCIL)	INDICATIVE SPOIL DISPOSAL SITE
PROPOSED DESIGNATION BOUNDARY (KAIPARA DISTRICT COUNCIL)	INDICATIVE CONSTRUCTED WETLANDS
INDICATIVE FILL BATTER	INDICATIVE WETLAND SWALE
INDICATIVE CUT BATTER	INDICATIVE WETLAND DISCHARGE
HIGH POINT OF ROAD PROFILE	INDICATIVE TREATMENT SWALE
LOW POINT OF ROAD PROFILE	INDICATIVE DRAINAGE DIVERSION
STORMWATER CATCHMENT (COLOUR VARIES)	INDICATIVE CUT OFF DRAIN
INDICATIVE CENTRE LINE	INDICATIVE MAINLINE CULVERT
	INDICATIVE LOCAL ROAD CULVERT
	INDICATIVE FLUME CULVERT
	EXISTING CULVERT
	EXISTING PROPERTY BOUNDARY
	EXISTING CONTOURS
	INDICATIVE EXISTING OVERLAND FLOW PATHS
	EXISTING FIRST GAS TRANSMISSION LINE CORRIDOR
	EXISTING TRANSPOWER HENDERSON TO MARS DEN A 220KV TRANSMISSION LINE



- NOTES**
1. CONTOURS DERIVED FROM DATA SOURCED FROM NORTHLAND 2024 & 2016-2018 LINZ LIDAR DATA SETS.
 2. AERIAL IMAGERY, NZ NORTHLAND 0.3m RURAL AERIAL PHOTOS (2023-2025).
 3. PROPERTY BOUNDARIES, NZ PRIMARY PARCELS, SOURCE LINZ DATASERVICE.
 4. FIRSTGAS INFORMATION SOURCE FROM <https://data-firstgas.hub.arcgis.com/>.
 5. DATA SOURCES LISTED ABOVE ARE LICENSED FOR REUSE UNDER THE CREATIVE COMMONS 4.0
 6. HEIGHTS ARE IN TERMS OF NZVD2016
 7. COORDINATES ARE IN TERMS OF NZTM2000
 8. STREAM DIVERSION ON SPOIL FILL SITES WILL BE FINALISED ONCE SITE LEVELS AND EXTENTS ARE CONFIRMED.



PROJECT		REV		DATE		REVISION DETAILS		APPROVED		STATUS		TITLE		PROJECT INFORMATION			
ALL INFORMATION SHOWN IS SUBJECT TO FINAL DESIGN AND THE DETAILS MAY CHANGE. AREAS AND MEASUREMENTS ARE SUBJECT TO SURVEY		A	18.02.26	CONSENT DESIGN FOR CLIENT REVIEW		R.D		DRAWN		V.HOOKER		27.03.26		NORTHLAND CORRIDOR			
		B	27.03.26	DESIGN ISSUE FOR LODGEMENT		R.D		DRG CHECK		V.HOOKER		27.03.26		DOCUMENT CODE			
								DESIGN		M.HASANZADEH		27.03.26		10722-PTA-2B0-SW-DRG-1402			
								VERIFIED		R.GORDON		27.03.26		SCALE			
								PROJECT LEAD		T.IRELAND		27.03.26		SIZE			
														REFERENCE No.			
														REV			
														B			

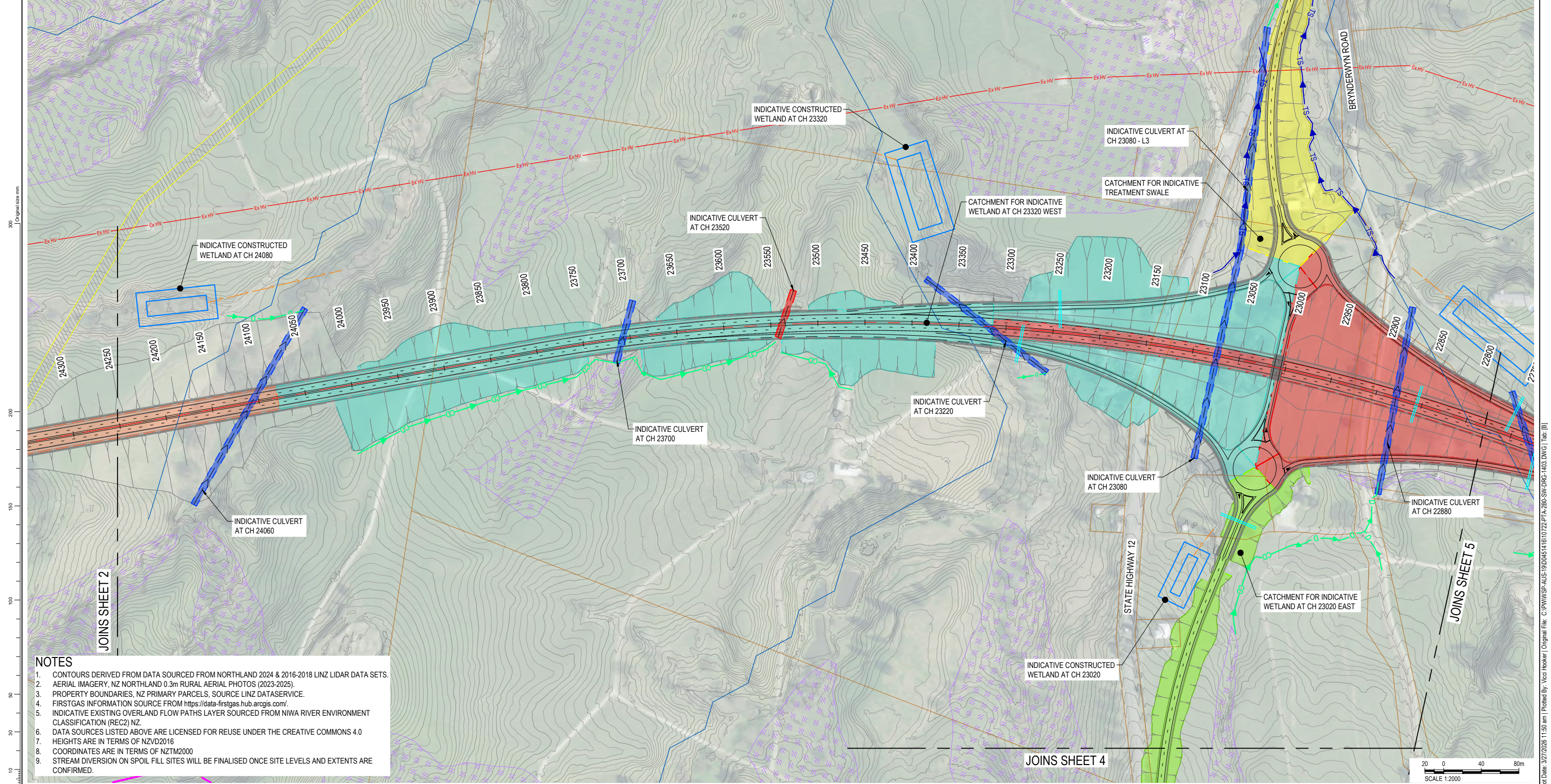
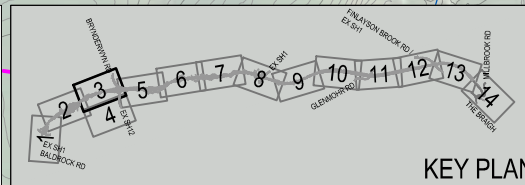


COORDINATE SYSTEM: NZTM 2000, VERTICAL DATUM: NZVD2016
 ORIGINAL IN COLOUR DETAIL MAY BE LOST IF COPIED

Plot Date: 3/27/2026 11:49 am | Plotted By: Vica Hooker | Original File: C:\PW\SW\SP-AUS-19000451416\10722-PTA-2B0-SW-DRG-1402.DWG | Tab: [B]

LEGEND

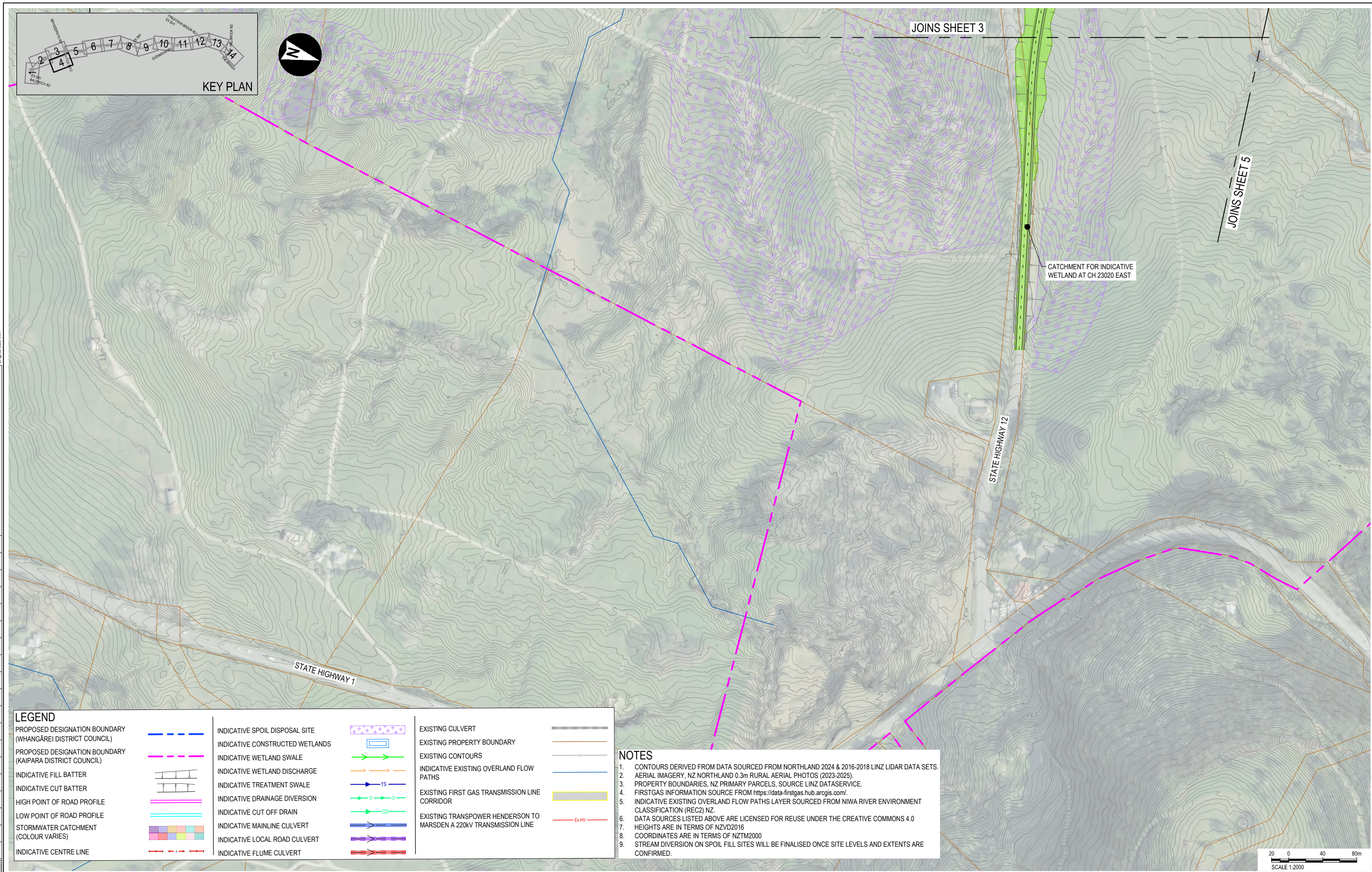
PROPOSED DESIGNATION BOUNDARY (WHANGĀREI DISTRICT COUNCIL)	INDICATIVE SPOIL DISPOSAL SITE	EXISTING CULVERT	EXISTING PROPERTY BOUNDARY
PROPOSED DESIGNATION BOUNDARY (KAIPARA DISTRICT COUNCIL)	INDICATIVE CONSTRUCTED WETLANDS	EXISTING CONTOURS	EXISTING OVERLAND FLOW PATHS
INDICATIVE FILL BATTER	INDICATIVE WETLAND SWALE	INDICATIVE EXISTING OVERLAND FLOW PATHS	EXISTING FIRST GAS TRANSMISSION LINE CORRIDOR
INDICATIVE CUT BATTER	INDICATIVE WETLAND DISCHARGE	INDICATIVE TREATMENT SWALE	EXISTING TRANSPOWER HENDERSON TO MARSDEN A 220KV TRANSMISSION LINE
HIGH POINT OF ROAD PROFILE	INDICATIVE DRAINAGE DIVERSION	INDICATIVE CUT OFF DRAIN	
LOW POINT OF ROAD PROFILE	INDICATIVE MAINLINE CULVERT	INDICATIVE LOCAL ROAD CULVERT	
STORMWATER CATCHMENT (COLOUR VARIES)	INDICATIVE FLUME CULVERT		
INDICATIVE CENTRE LINE			



- NOTES**
1. CONTOURS DERIVED FROM DATA SOURCED FROM NORTHLAND 2024 & 2016-2018 LINZ LIDAR DATA SETS.
 2. AERIAL IMAGERY, NZ NORTHLAND 0.3m RURAL AERIAL PHOTOS (2023-2025).
 3. PROPERTY BOUNDARIES, NZ PRIMARY PARCELS, SOURCE LINZ DATASERVICE.
 4. FIRSTGAS INFORMATION SOURCE FROM <https://data-firstgas.hub.arcgis.com/>.
 5. INDICATIVE EXISTING OVERLAND FLOW PATHS LAYER SOURCED FROM NIWA RIVER ENVIRONMENT CLASSIFICATION (REC2) NZ.
 6. DATA SOURCES LISTED ABOVE ARE LICENSED FOR REUSE UNDER THE CREATIVE COMMONS 4.0
 7. HEIGHTS ARE IN TERMS OF NZVD2016
 8. COORDINATES ARE IN TERMS OF NZTM2000
 9. STREAM DIVERSION ON SPOIL FILL SITES WILL BE FINALISED ONCE SITE LEVELS AND EXTENTS ARE CONFIRMED.

PROJECT		REV		DATE		REVISION DETAILS		APPROVED		STATUS		TITLE		PROJECT INFORMATION			
ALL INFORMATION SHOWN IS SUBJECT TO FINAL DESIGN AND THE DETAILS MAY CHANGE. AREAS AND MEASUREMENTS ARE SUBJECT TO SURVEY		A	18.02.26	CONSENT DESIGN FOR CLIENT REVIEW		R.D	DRAWN		V.HOOKER	27.03.26	CONSENT DESIGN	BRYNDERWYN HILLS SECTION INDICATIVE STORMWATER AND HYDROLOGY PLAN SHEET 3 OF 14		NORTHLAND CORRIDOR			
		B	27.03.26	DESIGN ISSUE FOR LODGEMENT		R.D	DRG CHECK		V.HOOKER	27.03.26				DOCUMENT CODE 10722-PTA-2B0-SW-DRG-1403			
										APPROVED				SCALE	SIZE	REFERENCE No.	REV
										R.DUPLOOY				1:2000	A1	SW-1403	B
COORDINATE SYSTEM: NZTM 2000, VERTICAL DATUM: NZVD2016										APPROVED BY		DATE					
ORIGINAL IN COLOUR DETAIL MAY BE LOST IF COPIED										R.DUPLOOY		27.03.26					

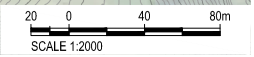
Plot Date: 3/27/2026 11:50 am | Plotted By: Vico Hooker | Original File: C:\P\WSP-AUS-19\00451416\10722-PTA-2B0-SW-DRG-1403.DWG | Tab: [B]



LEGEND	
PROPOSED DESIGNATION BOUNDARY (WHANGĀREI DISTRICT COUNCIL)	--- (Blue dashed line)
PROPOSED DESIGNATION BOUNDARY (KAIPARA DISTRICT COUNCIL)	--- (Magenta dashed line)
INDICATIVE FILL BATTER	--- (Black dashed line)
INDICATIVE CUT BATTER	--- (Black dashed line)
HIGH POINT OF ROAD PROFILE	--- (Magenta solid line)
LOW POINT OF ROAD PROFILE	--- (Cyan solid line)
STORMWATER CATCHMENT (COLOUR VARIES)	--- (Multi-colored solid line)
INDICATIVE CENTRE LINE	--- (Red dashed line)
INDICATIVE SPOIL DISPOSAL SITE	--- (Purple dashed line with stars)
INDICATIVE CONSTRUCTED WETLANDS	--- (Blue dashed line with rectangles)
INDICATIVE WETLAND SWALE	--- (Green dashed line with arrows)
INDICATIVE WETLAND DISCHARGE	--- (Orange dashed line with arrows)
INDICATIVE TREATMENT SWALE	--- (Blue dashed line with 'TS')
INDICATIVE DRAINAGE DIVERSION	--- (Green dashed line with 'D')
INDICATIVE CUT OFF DRAIN	--- (Green dashed line with 'CD')
INDICATIVE MAINLINE CULVERT	--- (Blue dashed line with arrows)
INDICATIVE LOCAL ROAD CULVERT	--- (Purple dashed line with arrows)
INDICATIVE FLUME CULVERT	--- (Red dashed line with arrows)
EXISTING CULVERT	--- (Black dashed line)
EXISTING PROPERTY BOUNDARY	--- (Orange solid line)
EXISTING CONTOURS	--- (Grey solid line)
INDICATIVE EXISTING OVERLAND FLOW PATHS	--- (Blue solid line)
EXISTING FIRST GAS TRANSMISSION LINE CORRIDOR	--- (Yellow shaded area)
EXISTING TRANSPOWER HENDERSON TO MARSDEN A 220KV TRANSMISSION LINE	--- (Red solid line with 'Ex HV')

NOTES

1. CONTOURS DERIVED FROM DATA SOURCED FROM NORTHLAND 2024 & 2016-2018 LINZ LIDAR DATA SETS.
2. AERIAL IMAGERY, NZ NORTHLAND 0.3m RURAL AERIAL PHOTOS (2023-2025).
3. PROPERTY BOUNDARIES, NZ PRIMARY PARCELS, SOURCE LINZ DATASERVICE.
4. FIRSTGAS INFORMATION SOURCE FROM <https://data-firstgas.hub.arcgis.com/>.
5. INDICATIVE EXISTING OVERLAND FLOW PATHS LAYER SOURCED FROM NIWA RIVER ENVIRONMENT CLASSIFICATION (REC2) NZ.
6. DATA SOURCES LISTED ABOVE ARE LICENSED FOR REUSE UNDER THE CREATIVE COMMONS 4.0.
7. HEIGHTS ARE IN TERMS OF NZVD2016.
8. COORDINATES ARE IN TERMS OF NZTM2000.
9. STREAM DIVERSION ON SPOIL FILL SITES WILL BE FINALISED ONCE SITE LEVELS AND EXTENTS ARE CONFIRMED.

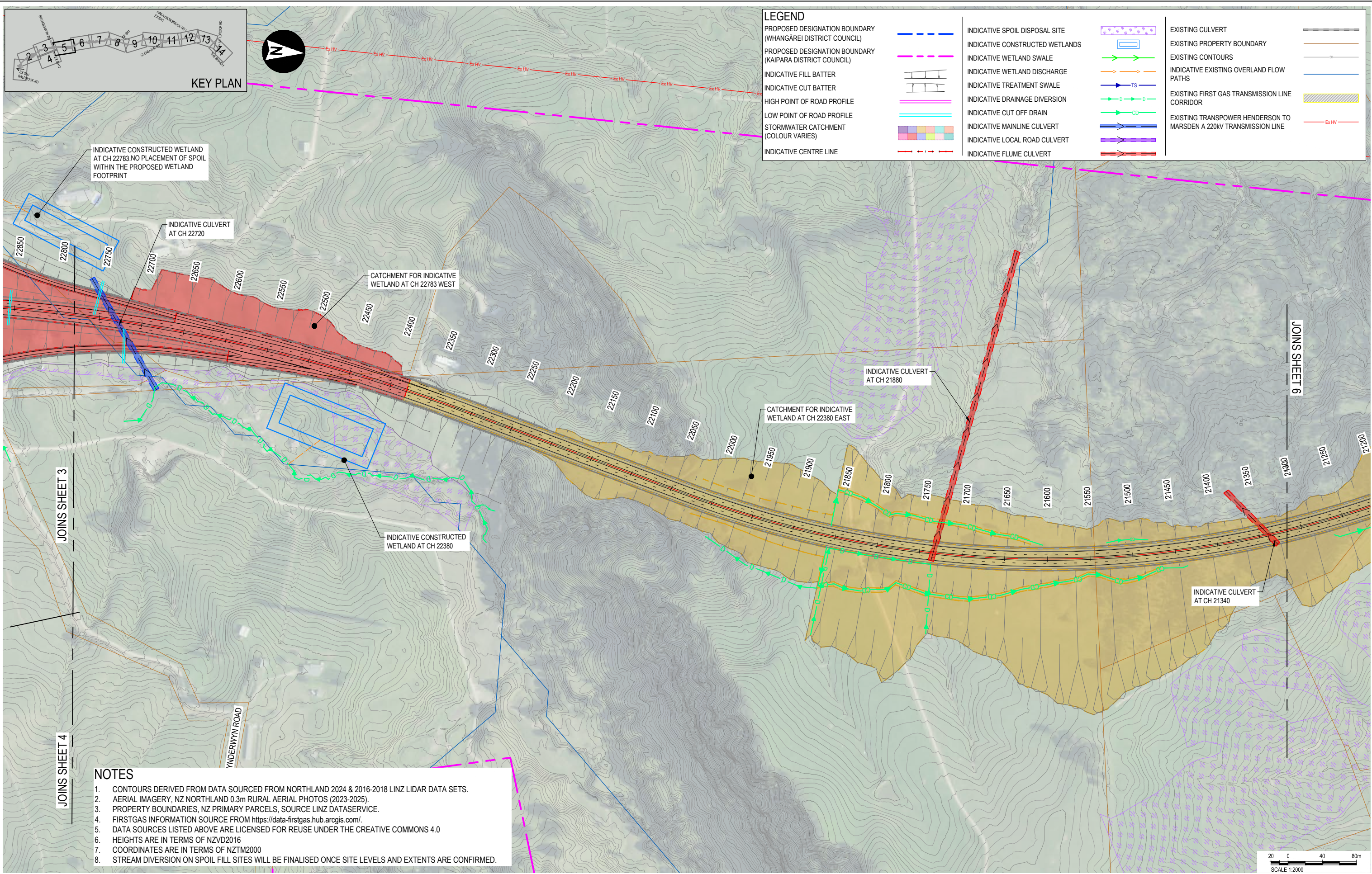


PROJECT	REV	DATE	REVISION DETAILS	APPROVED	STATUS	TITLE	PROJECT INFORMATION
ALL INFORMATION SHOWN IS SUBJECT TO FINAL DESIGN AND THE DETAILS MAY CHANGE. AREAS AND MEASUREMENTS ARE SUBJECT TO SURVEY	A	18.02.26	CONSENT DESIGN FOR CLIENT REVIEW	R.D	CONSENT DESIGN	BRYNDERWYN HILLS SECTION INDICATIVE STORMWATER AND HYDROLOGY PLAN SHEET 4 OF 14	NORTHLAND CORRIDOR
	B	27.03.26	DESIGN ISSUE FOR LODGEMENT	R.D			
					APPROVED		DOCUMENT CODE
					R.DUPLLOY		10722-PTA-2B0-SW-DRG-1404
					APPROVED BY		SCALE
					R.DUPLLOY		1:2000
					DATE		SIZE
					27.03.26		A1
							REFERENCE No.
							SW-1404
							REV
							B



COORDINATE SYSTEM: NZTM 2000, VERTICAL DATUM: NZVD2016
 ORIGINAL IN COLOUR DETAIL MAY BE LOST IF COPIED

Plot Date: 3/27/2026 11:52 am | Plotted By: Vica Hooker | Original File: C:\P\W\SP-AUS-19000451416\10722-PTA-2B0-SW-DRG-1404.DWG | Tab: [B]



LEGEND	
PROPOSED DESIGNATION BOUNDARY (WHANGĀREI DISTRICT COUNCIL)	INDICATIVE SPOIL DISPOSAL SITE
PROPOSED DESIGNATION BOUNDARY (KAIPARA DISTRICT COUNCIL)	INDICATIVE CONSTRUCTED WETLANDS
INDICATIVE FILL BATTER	INDICATIVE WETLAND SWALE
INDICATIVE CUT BATTER	INDICATIVE WETLAND DISCHARGE
HIGH POINT OF ROAD PROFILE	INDICATIVE TREATMENT SWALE
LOW POINT OF ROAD PROFILE	INDICATIVE DRAINAGE DIVERSION
STORMWATER CATCHMENT (COLOUR VARIES)	INDICATIVE CUT OFF DRAIN
INDICATIVE CENTRE LINE	INDICATIVE MAINLINE CULVERT
	INDICATIVE LOCAL ROAD CULVERT
	INDICATIVE FLUME CULVERT
	EXISTING CULVERT
	EXISTING PROPERTY BOUNDARY
	EXISTING CONTOURS
	INDICATIVE EXISTING OVERLAND FLOW PATHS
	EXISTING FIRST GAS TRANSMISSION LINE CORRIDOR
	EXISTING TRANSPOWER HENDERSON TO MARSDEN A 220kV TRANSMISSION LINE

INDICATIVE CONSTRUCTED WETLAND AT CH 22783. NO PLACEMENT OF SPOIL WITHIN THE PROPOSED WETLAND FOOTPRINT

INDICATIVE CULVERT AT CH 22720

CATCHMENT FOR INDICATIVE WETLAND AT CH 22783 WEST

INDICATIVE CULVERT AT CH 21880

CATCHMENT FOR INDICATIVE WETLAND AT CH 22380 EAST

INDICATIVE CONSTRUCTED WETLAND AT CH 22380

INDICATIVE CULVERT AT CH 21340

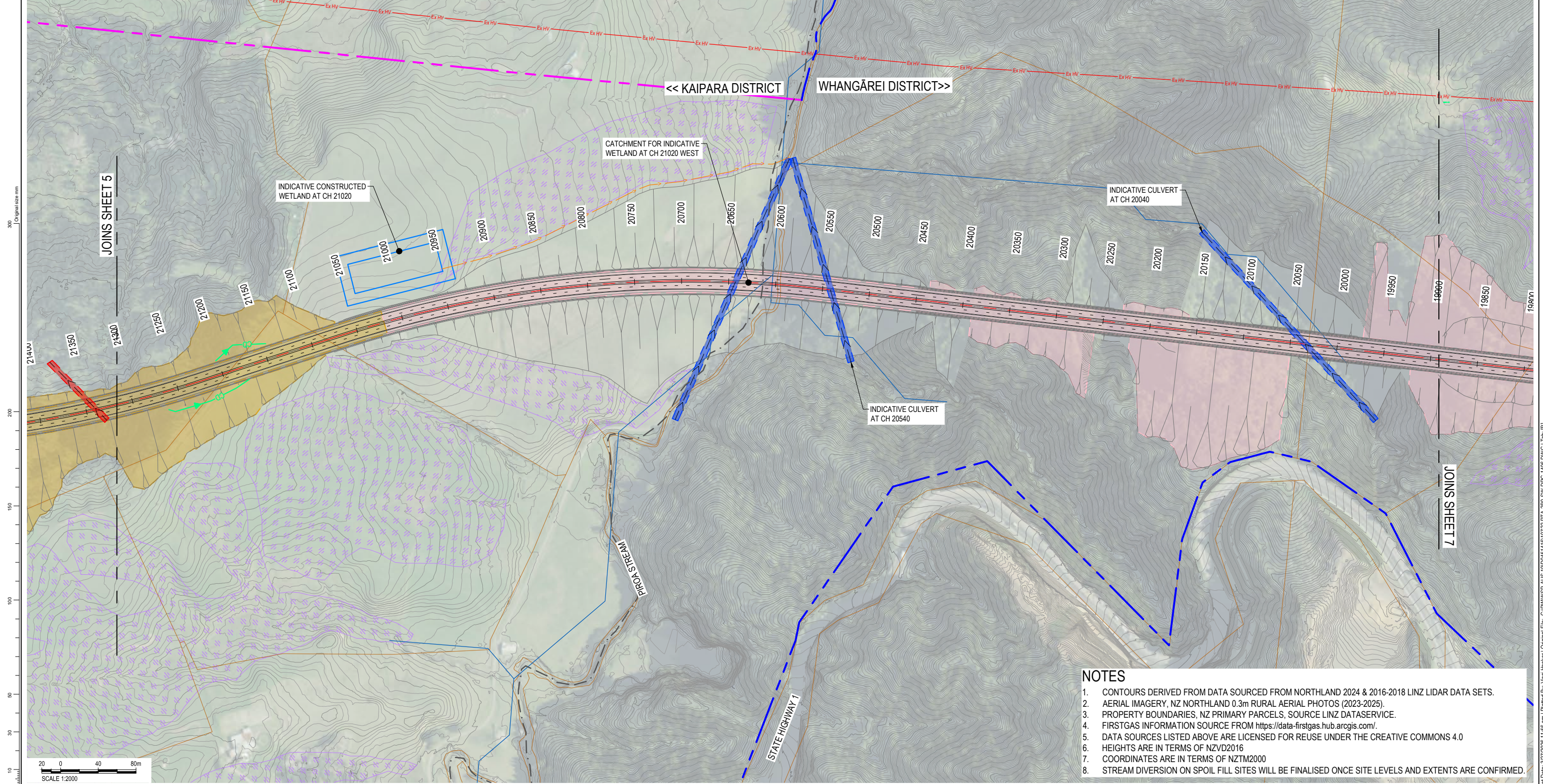
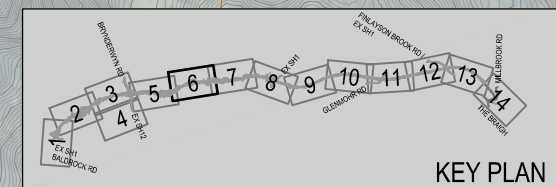
- NOTES**
1. CONTOURS DERIVED FROM DATA SOURCED FROM NORTHLAND 2024 & 2016-2018 LINZ LIDAR DATA SETS.
 2. AERIAL IMAGERY, NZ NORTHLAND 0.3m RURAL AERIAL PHOTOS (2023-2025).
 3. PROPERTY BOUNDARIES, NZ PRIMARY PARCELS, SOURCE LINZ DATASERVICE.
 4. FIRSTGAS INFORMATION SOURCE FROM <https://data-firstgas.hub.arcgis.com/>.
 5. DATA SOURCES LISTED ABOVE ARE LICENSED FOR REUSE UNDER THE CREATIVE COMMONS 4.0
 6. HEIGHTS ARE IN TERMS OF NZVD2016
 7. COORDINATES ARE IN TERMS OF NZTM2000
 8. STREAM DIVERSION ON SPOIL FILL SITES WILL BE FINALISED ONCE SITE LEVELS AND EXTENTS ARE CONFIRMED.

PROJECT		REV	DATE	REVISION DETAILS	APPROVED	STATUS		TITLE		PROJECT INFORMATION			
ALL INFORMATION SHOWN IS SUBJECT TO FINAL DESIGN AND THE DETAILS MAY CHANGE. AREAS AND MEASUREMENTS ARE SUBJECT TO SURVEY		A	18.02.26	CONSENT DESIGN FOR CLIENT REVIEW	R.D	CONSENT DESIGN		BRYNDERWYN HILLS SECTION INDICATIVE STORMWATER AND HYDROLOGY PLAN SHEET 5 OF 14		NORTHLAND CORRIDOR			
		B	27.03.26	DESIGN ISSUE FOR LODGEMENT	R.D								
						APPROVED				DOCUMENT CODE			
						R.DUPLLOY				10722-PTA-2B0-SW-DRG-1405			
						APPROVED BY		DATE		SCALE	SIZE	REFERENCE No.	REV
						R.DUPLLOY		27.03.26		1:2000	A1	SW-1405	B
						PROJECT LEAD		T.IRELAND					

COORDINATE SYSTEM: NZTM 2000, VERTICAL DATUM: NZVD2016
 ORIGINAL IN COLOUR DETAIL MAY BE LOST IF COPIED

Plot Date: 3/27/2026 11:53 am | Plotted By: Vica Hooker | Original File: C:\P\W\SP-AUS-19000451416\10722-PTA-2B0-SW-DRG-1405.DWG | Tab: [B]

LEGEND	
PROPOSED DESIGNATION BOUNDARY (WHANGĀREI DISTRICT COUNCIL)	INDICATIVE SPOIL DISPOSAL SITE
PROPOSED DESIGNATION BOUNDARY (KAIPARA DISTRICT COUNCIL)	INDICATIVE CONSTRUCTED WETLANDS
INDICATIVE FILL BATTER	INDICATIVE WETLAND SWALE
INDICATIVE CUT BATTER	INDICATIVE WETLAND DISCHARGE
HIGH POINT OF ROAD PROFILE	INDICATIVE TREATMENT SWALE
LOW POINT OF ROAD PROFILE	INDICATIVE DRAINAGE DIVERSION
STORMWATER CATCHMENT (COLOUR VARIES)	INDICATIVE CUT OFF DRAIN
INDICATIVE CENTRE LINE	INDICATIVE MAINLINE CULVERT
	INDICATIVE LOCAL ROAD CULVERT
	INDICATIVE FLUME CULVERT
	EXISTING CULVERT
	EXISTING PROPERTY BOUNDARY
	EXISTING CONTOURS
	INDICATIVE EXISTING OVERLAND FLOW PATHS
	EXISTING FIRST GAS TRANSMISSION LINE CORRIDOR
	EXISTING TRANSPOWER HENDERSON TO MARSDEN A 220KV TRANSMISSION LINE



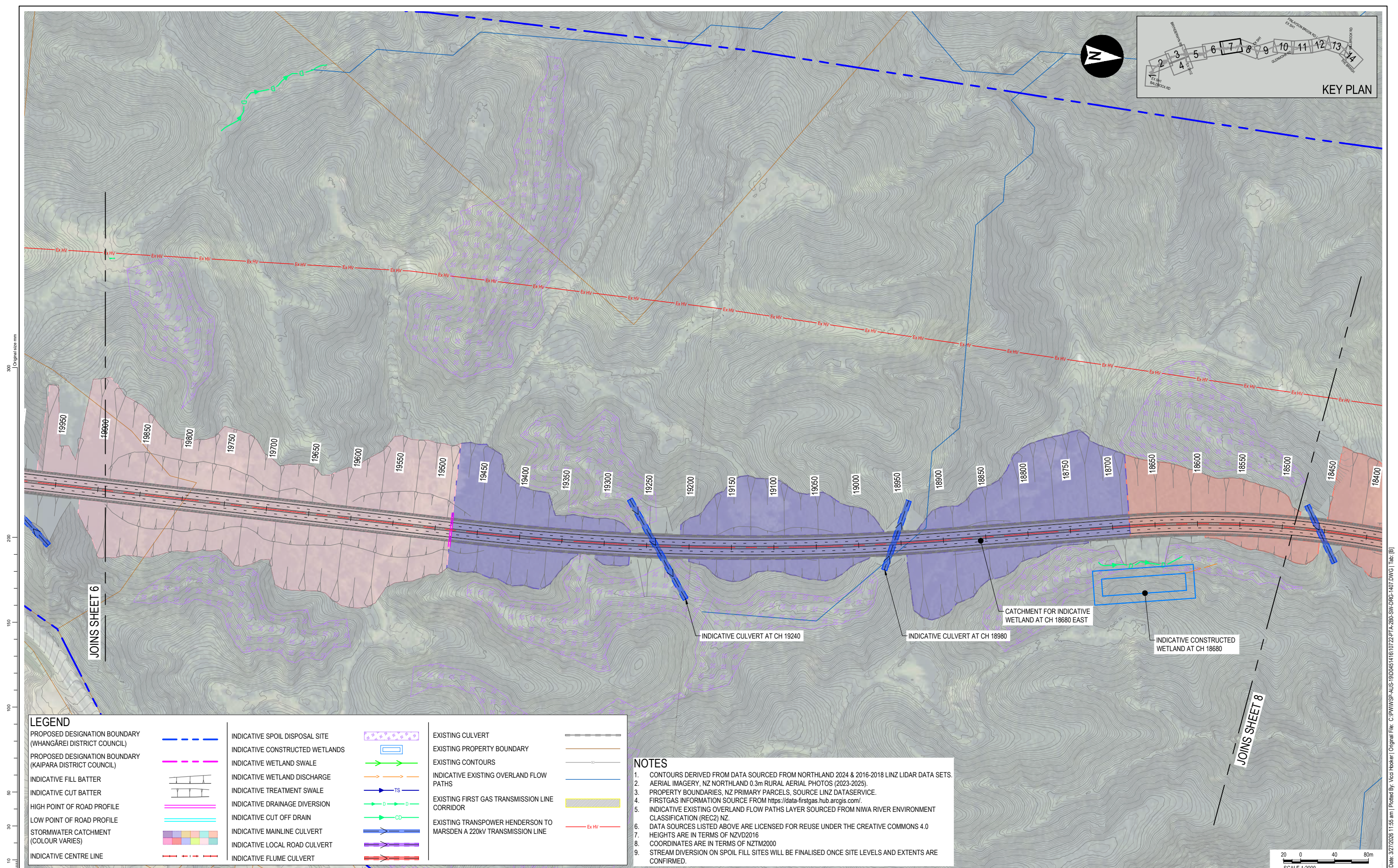
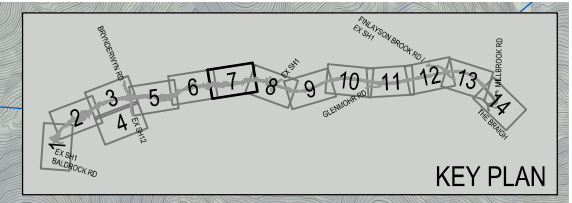
- NOTES**
1. CONTOURS DERIVED FROM DATA SOURCED FROM NORTHLAND 2024 & 2016-2018 LINZ LIDAR DATA SETS.
 2. AERIAL IMAGERY, NZ NORTHLAND 0.3m RURAL AERIAL PHOTOS (2023-2025).
 3. PROPERTY BOUNDARIES, NZ PRIMARY PARCELS, SOURCE LINZ DATASERVICE.
 4. FIRSTGAS INFORMATION SOURCE FROM <https://data-firstgas.hub.arcgis.com/>.
 5. DATA SOURCES LISTED ABOVE ARE LICENSED FOR REUSE UNDER THE CREATIVE COMMONS 4.0
 6. HEIGHTS ARE IN TERMS OF NZVD2016
 7. COORDINATES ARE IN TERMS OF NZTM2000
 8. STREAM DIVERSION ON SPOIL FILL SITES WILL BE FINALISED ONCE SITE LEVELS AND EXTENTS ARE CONFIRMED.

PROJECT	REV	DATE	REVISION DETAILS	APPROVED	STATUS	TITLE	PROJECT INFORMATION
ALL INFORMATION SHOWN IS SUBJECT TO FINAL DESIGN AND THE DETAILS MAY CHANGE. AREAS AND MEASUREMENTS ARE SUBJECT TO SURVEY	A	18.02.26	CONSENT DESIGN FOR CLIENT REVIEW	R.D	CONSENT DESIGN	BRYNDERWYN HILLS SECTION INDICATIVE STORMWATER AND HYDROLOGY PLAN SHEET 6 OF 14	NORTHLAND CORRIDOR
	B	27.03.26	DESIGN ISSUE FOR LODGEMENT	R.D			
				APPROVED	APPROVED		DOCUMENT CODE
					R.DUPLOOY		10722-PTA-2B0-SW-DRG-1406
				APPROVED BY	DATE	SCALE	SIZE
				R.DUPLOOY	27.03.26	1:2000	A1
				PROJECT LEAD		REFERENCE No.	REV
				T.IRELAND		SW-1406	B



COORDINATE SYSTEM: NZTM 2000, VERTICAL DATUM: NZVD2016
 ORIGINAL IN COLOUR DETAIL MAY BE LOST IF COPIED

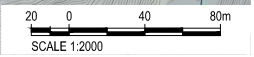
Plot Date: 3/27/2026 11:56 am | Plotted By: Vica Hooker | Original File: C:\PW\WSP-AUS-19000451416\10722-PTA-2B0-SW-DRG-1406.DWG | Tab: [B]



LEGEND	
PROPOSED DESIGNATION BOUNDARY (WHANGĀREI DISTRICT COUNCIL)	--- (Blue dashed line)
PROPOSED DESIGNATION BOUNDARY (KAIPARA DISTRICT COUNCIL)	--- (Pink dashed line)
INDICATIVE FILL BATTER	--- (White line with vertical dashes)
INDICATIVE CUT BATTER	--- (White line with horizontal dashes)
HIGH POINT OF ROAD PROFILE	--- (Pink line)
LOW POINT OF ROAD PROFILE	--- (Cyan line)
STORMWATER CATCHMENT (COLOUR VARIES)	--- (Multi-colored shaded area)
INDICATIVE CENTRE LINE	--- (Red dashed line)
INDICATIVE SPOIL DISPOSAL SITE	--- (Purple dashed line with asterisks)
INDICATIVE CONSTRUCTED WETLANDS	--- (Blue rectangle)
INDICATIVE WETLAND SWALE	--- (Green line with arrows)
INDICATIVE WETLAND DISCHARGE	--- (Orange line with arrows)
INDICATIVE TREATMENT SWALE	--- (Blue line with arrows)
INDICATIVE DRAINAGE DIVERSION	--- (Green line with arrows and circles)
INDICATIVE CUT OFF DRAIN	--- (Green line with arrows and circles)
INDICATIVE MAINLINE CULVERT	--- (Blue line with arrows)
INDICATIVE LOCAL ROAD CULVERT	--- (Purple line with arrows)
INDICATIVE FLUME CULVERT	--- (Red line with arrows)
EXISTING CULVERT	--- (Black dashed line)
EXISTING PROPERTY BOUNDARY	--- (Orange line)
EXISTING CONTOURS	--- (Grey line)
INDICATIVE EXISTING OVERLAND FLOW PATHS	--- (Blue line)
EXISTING FIRST GAS TRANSMISSION LINE CORRIDOR	--- (Yellow shaded area)
EXISTING TRANSPOWER HENDERSON TO MARSDEN A 220kV TRANSMISSION LINE	--- (Red line)

NOTES

1. CONTOURS DERIVED FROM DATA SOURCED FROM NORTHLAND 2024 & 2016-2018 LINZ LIDAR DATA SETS.
2. AERIAL IMAGERY, NZ NORTHLAND 0.3m RURAL AERIAL PHOTOS (2023-2025).
3. PROPERTY BOUNDARIES, NZ PRIMARY PARCELS, SOURCE LINZ DATASERVICE.
4. FIRSTGAS INFORMATION SOURCE FROM <https://data-firstgas.hub.arcgis.com/>.
5. INDICATIVE EXISTING OVERLAND FLOW PATHS LAYER SOURCED FROM NIWA RIVER ENVIRONMENT CLASSIFICATION (REC2) NZ.
6. DATA SOURCES LISTED ABOVE ARE LICENSED FOR REUSE UNDER THE CREATIVE COMMONS 4.0 HEIGHTS ARE IN TERMS OF NZVD2016
7. COORDINATES ARE IN TERMS OF NZTM2000
8. STREAM DIVERSION ON SPOIL FILL SITES WILL BE FINALISED ONCE SITE LEVELS AND EXTENTS ARE CONFIRMED.



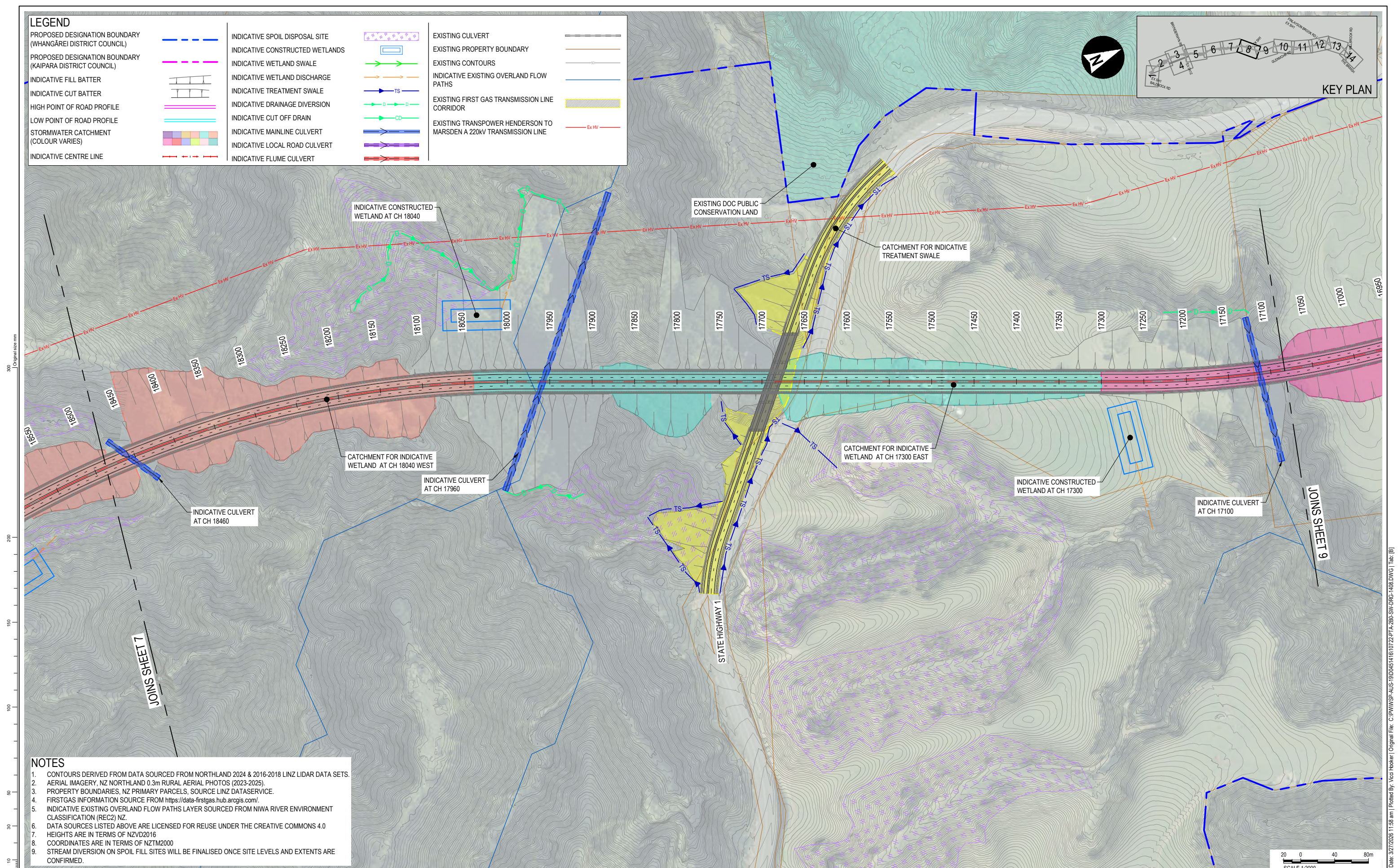
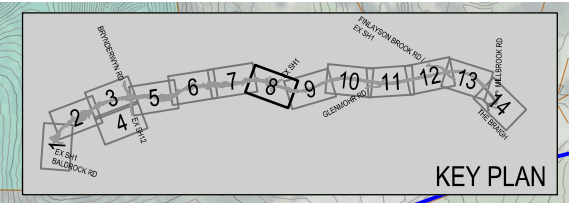
PROJECT				REVISION DETAILS			APPROVED			STATUS			TITLE				PROJECT INFORMATION			
ALL INFORMATION SHOWN IS SUBJECT TO FINAL DESIGN AND THE DETAILS MAY CHANGE. AREAS AND MEASUREMENTS ARE SUBJECT TO SURVEY				REV	DATE	CONSENT DESIGN FOR CLIENT REVIEW			R.D	DRAWN			BRYNDERWYN HILLS SECTION				NORTHLAND CORRIDOR			
				A	18.02.26	DESIGN ISSUE FOR LODGEMENT			R.D	DRG CHECK			INDICATIVE STORMWYRN AND HYDROLOGY PLAN				DOCUMENT CODE			
				B	27.03.26					DESIGN			SHEET 7 OF 14				10722-PTA-2B0-SW-DRG-1407			
										APPROVED			SCALE				SIZE			
										R.DUPLOOY			1:2000				A1			
										APPROVED BY			REFERENCE No.				REV			
										DATE			SW-1407				B			
										PROJECT LEAD										
										T.IRELAND										



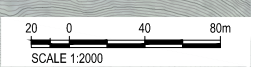
COORDINATE SYSTEM: NZTM 2000, VERTICAL DATUM: NZVD2016
 ORIGINAL IN COLOUR DETAIL MAY BE LOST IF COPIED

Plot Date: 3/27/2026 11:55 am | Plotted By: Vica Hooker | Original File: C:\PW\SW\SP-AUS-19000451416\10722-PTA-2B0-SW-DRG-1407.DWG | Tab: [B]

LEGEND	
PROPOSED DESIGNATION BOUNDARY (WHANGAREI DISTRICT COUNCIL)	INDICATIVE SPOIL DISPOSAL SITE
PROPOSED DESIGNATION BOUNDARY (KAIPARA DISTRICT COUNCIL)	INDICATIVE CONSTRUCTED WETLANDS
INDICATIVE FILL BATTER	INDICATIVE WETLAND SWALE
INDICATIVE CUT BATTER	INDICATIVE WETLAND DISCHARGE
HIGH POINT OF ROAD PROFILE	INDICATIVE TREATMENT SWALE
LOW POINT OF ROAD PROFILE	INDICATIVE DRAINAGE DIVERSION
STORMWATER CATCHMENT (COLOUR VARIES)	INDICATIVE CUT OFF DRAIN
INDICATIVE CENTRE LINE	INDICATIVE MAINLINE CULVERT
	INDICATIVE LOCAL ROAD CULVERT
	INDICATIVE FLUME CULVERT
	EXISTING CULVERT
	EXISTING PROPERTY BOUNDARY
	EXISTING CONTOURS
	INDICATIVE EXISTING OVERLAND FLOW PATHS
	EXISTING FIRST GAS TRANSMISSION LINE CORRIDOR
	EXISTING TRANSPOWER HENDERSON TO MARSDEN A 220KV TRANSMISSION LINE



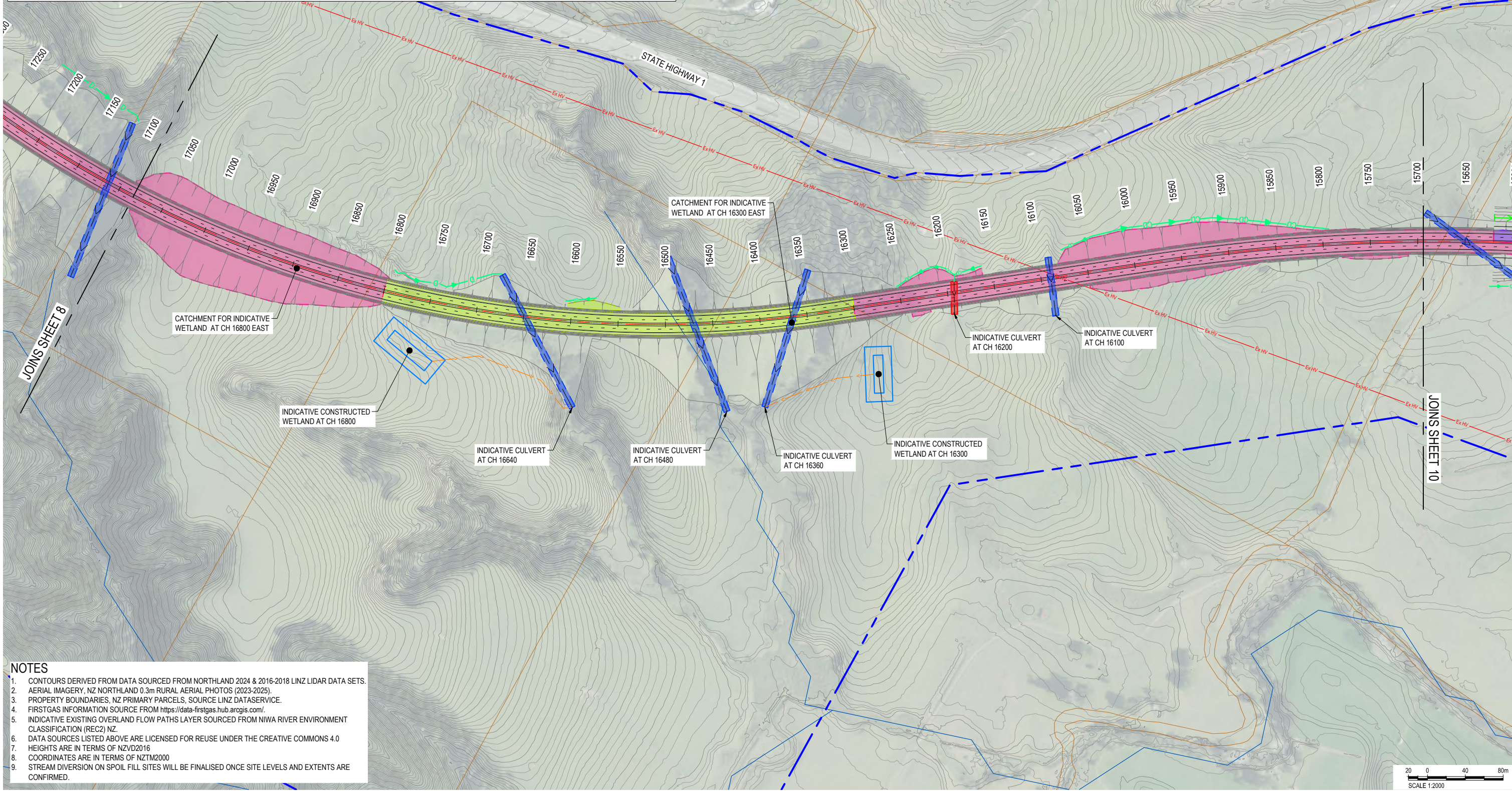
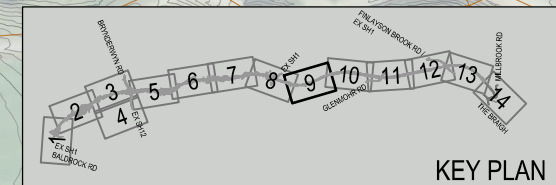
- NOTES**
1. CONTOURS DERIVED FROM DATA SOURCED FROM NORTHLAND 2024 & 2016-2018 LINZ LIDAR DATA SETS.
 2. AERIAL IMAGERY, NZ NORTHLAND 0.3m RURAL AERIAL PHOTOS (2023-2025).
 3. PROPERTY BOUNDARIES, NZ PRIMARY PARCELS, SOURCE LINZ DATASERVICE.
 4. FIRSTGAS INFORMATION SOURCE FROM <https://data-firstgas.hub.arcgis.com/>.
 5. INDICATIVE EXISTING OVERLAND FLOW PATHS LAYER SOURCED FROM NIWA RIVER ENVIRONMENT CLASSIFICATION (REC2) NZ.
 6. DATA SOURCES LISTED ABOVE ARE LICENSED FOR REUSE UNDER THE CREATIVE COMMONS 4.0
 7. HEIGHTS ARE IN TERMS OF NZVD2016
 8. COORDINATES ARE IN TERMS OF NZTM2000
 9. STREAM DIVERSION ON SPOIL FILL SITES WILL BE FINALISED ONCE SITE LEVELS AND EXTENTS ARE CONFIRMED.



PROJECT		REV	DATE	REVISION DETAILS	APPROVED	STATUS		TITLE	PROJECT INFORMATION			
ALL INFORMATION SHOWN IS SUBJECT TO FINAL DESIGN AND THE DETAILS MAY CHANGE. AREAS AND MEASUREMENTS ARE SUBJECT TO SURVEY		A	18.02.26	CONSENT DESIGN FOR CLIENT REVIEW	R.D	CONSENT DESIGN		BRYNDERWYN HILLS SECTION INDICATIVE STORMWATER AND HYDROLOGY PLAN SHEET 8 OF 14	NORTHLAND CORRIDOR			
		B	27.03.26	DESIGN ISSUE FOR LODGEMENT	R.D				DOCUMENT CODE 10722-PTA-2B0-SW-DRG-1408			
						APPROVED		SCALE		SIZE	REFERENCE No.	REV
						R.DUPLUOY		1:2000		A1	SW-1408	B
COORDINATE SYSTEM: NZTM 2000, VERTICAL DATUM: NZVD2016						APPROVED BY		DATE				
ORIGINAL IN COLOUR DETAIL MAY BE LOST IF COPIED						R.DUPLUOY		27.03.26				

Plot Date: 3/27/2026 11:55 am | Plotted By: Vica Hooker | Original File: C:\PW\WSP-AUS-19000451416\10722-PTA-2B0-SW-DRG-1408.DWG | Tab: |B|

LEGEND	
PROPOSED DESIGNATION BOUNDARY (WHANGAREI DISTRICT COUNCIL)	INDICATIVE SPOIL DISPOSAL SITE
PROPOSED DESIGNATION BOUNDARY (KAIPARA DISTRICT COUNCIL)	INDICATIVE CONSTRUCTED WETLANDS
INDICATIVE FILL BATTER	INDICATIVE WETLAND SWALE
INDICATIVE CUT BATTER	INDICATIVE WETLAND DISCHARGE
HIGH POINT OF ROAD PROFILE	INDICATIVE TREATMENT SWALE
LOW POINT OF ROAD PROFILE	INDICATIVE DRAINAGE DIVERSION
STORMWATER CATCHMENT (COLOUR VARIES)	INDICATIVE CUT OFF DRAIN
INDICATIVE CENTRE LINE	INDICATIVE MAINLINE CULVERT
	INDICATIVE LOCAL ROAD CULVERT
	INDICATIVE FLUME CULVERT
	EXISTING CULVERT
	EXISTING PROPERTY BOUNDARY
	EXISTING CONTOURS
	INDICATIVE EXISTING OVERLAND FLOW PATHS
	EXISTING FIRST GAS TRANSMISSION LINE CORRIDOR
	EXISTING TRANSPOWER HENDERSON TO MARSDEN A 220KV TRANSMISSION LINE



- NOTES**
1. CONTOURS DERIVED FROM DATA SOURCED FROM NORTHLAND 2024 & 2016-2018 LINZ LIDAR DATA SETS.
 2. AERIAL IMAGERY, NZ NORTHLAND 0.3m RURAL AERIAL PHOTOS (2023-2025).
 3. PROPERTY BOUNDARIES, NZ PRIMARY PARCELS, SOURCE LINZ DATASERVICE.
 4. FIRSTGAS INFORMATION SOURCE FROM <https://data-firstgas.hub.arogis.com/>.
 5. INDICATIVE EXISTING OVERLAND FLOW PATHS LAYER SOURCED FROM NIWA RIVER ENVIRONMENT CLASSIFICATION (REC2) NZ.
 6. DATA SOURCES LISTED ABOVE ARE LICENSED FOR REUSE UNDER THE CREATIVE COMMONS 4.0
 7. HEIGHTS ARE IN TERMS OF NZVD2016
 8. COORDINATES ARE IN TERMS OF NZTM2000
 9. STREAM DIVERSION ON SPOIL FILL SITES WILL BE FINALISED ONCE SITE LEVELS AND EXTENTS ARE CONFIRMED.

PROJECT	REV	DATE	REVISION DETAILS	APPROVED	STATUS	TITLE	PROJECT INFORMATION
ALL INFORMATION SHOWN IS SUBJECT TO FINAL DESIGN AND THE DETAILS MAY CHANGE. AREAS AND MEASUREMENTS ARE SUBJECT TO SURVEY	A	18.02.26	CONSENT DESIGN FOR CLIENT REVIEW	R.D	CONSENT DESIGN	BRYNDERWYN HILLS SECTION INDICATIVE STORMWATER AND HYDROLOGY PLAN SHEET 9 OF 14	NORTHLAND CORRIDOR
	B	27.03.26	DESIGN ISSUE FOR LODGEMENT	R.D			
					APPROVED		DOCUMENT CODE
					R.DUPLOOY		10722-PTA-2B0-SW-DRG-1409
					APPROVED BY		SCALE
					R.DUPLOOY		1:2000
					DATE		SIZE
					27.03.26		A1
							REFERENCE No.
							SW-1409
							REV
							B

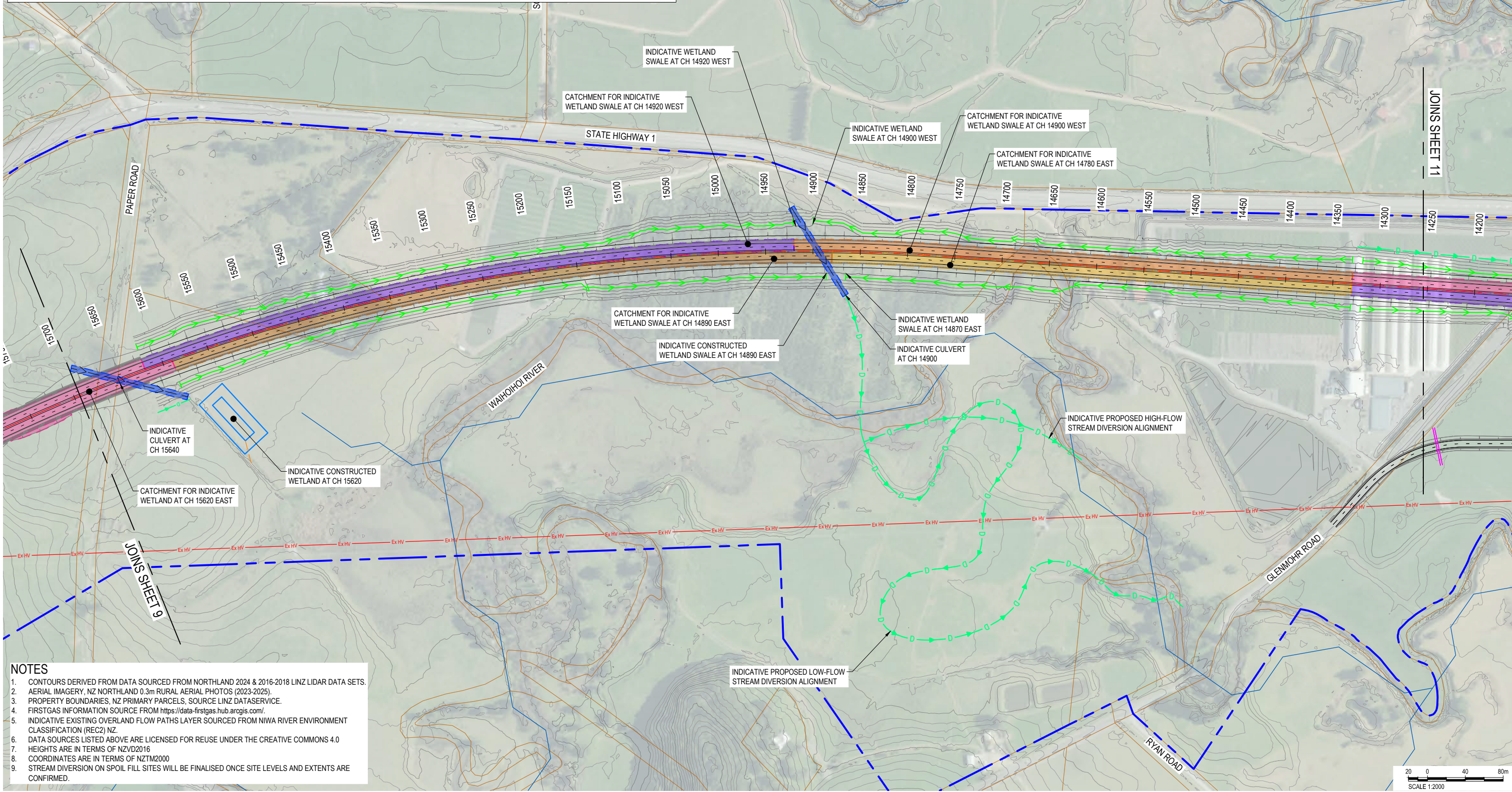
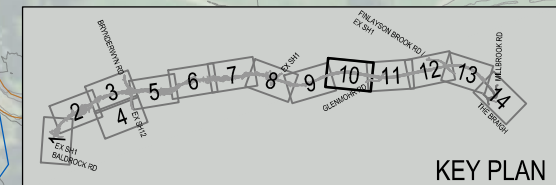


COORDINATE SYSTEM: NZTM 2000, VERTICAL DATUM: NZVD2016
 ORIGINAL IN COLOUR DETAIL MAY BE LOST IF COPIED

Plot Date: 3/27/2026 12:10 pm | Plotted By: Vica Hooker | Original File: C:\P\W\SP-AUS-19000451416\10722-PTA-2B0-SW-DRG-1409.DWG | Tab: [B]

LEGEND

PROPOSED DESIGNATION BOUNDARY (WHANGAREI DISTRICT COUNCIL)	INDICATIVE SPOIL DISPOSAL SITE	EXISTING CULVERT	EXISTING PROPERTY BOUNDARY
PROPOSED DESIGNATION BOUNDARY (KAIPARA DISTRICT COUNCIL)	INDICATIVE CONSTRUCTED WETLANDS	EXISTING CONTOURS	EXISTING OVERLAND FLOW PATHS
INDICATIVE FILL BATTER	INDICATIVE WETLAND SWALE	INDICATIVE EXISTING OVERLAND FLOW PATHS	EXISTING FIRST GAS TRANSMISSION LINE CORRIDOR
INDICATIVE CUT BATTER	INDICATIVE WETLAND DISCHARGE	INDICATIVE TREATMENT SWALE	EXISTING TRANSPOWER HENDERSON TO MARSDEN A 220KV TRANSMISSION LINE
HIGH POINT OF ROAD PROFILE	INDICATIVE DRAINAGE DIVERSION	INDICATIVE CUT OFF DRAIN	
LOW POINT OF ROAD PROFILE	INDICATIVE MAINLINE CULVERT	INDICATIVE LOCAL ROAD CULVERT	
STORMWATER CATCHMENT (COLOUR VARIES)	INDICATIVE FLUME CULVERT		
INDICATIVE CENTRE LINE			



- NOTES**
1. CONTOURS DERIVED FROM DATA SOURCED FROM NORTHLAND 2024 & 2016-2018 LINZ LIDAR DATA SETS.
 2. AERIAL IMAGERY, NZ NORTHLAND 0.3m RURAL AERIAL PHOTOS (2023-2025).
 3. PROPERTY BOUNDARIES, NZ PRIMARY PARCELS, SOURCE LINZ DATASERVICE.
 4. FIRSTGAS INFORMATION SOURCE FROM <https://data-firstgas.hub.arcgis.com/>.
 5. INDICATIVE EXISTING OVERLAND FLOW PATHS LAYER SOURCED FROM NIWA RIVER ENVIRONMENT CLASSIFICATION (REC2) NZ.
 6. DATA SOURCES LISTED ABOVE ARE LICENSED FOR REUSE UNDER THE CREATIVE COMMONS 4.0
 7. HEIGHTS ARE IN TERMS OF NZVD2016
 8. COORDINATES ARE IN TERMS OF NZTM2000
 9. STREAM DIVERSION ON SPOIL FILL SITES WILL BE FINALISED ONCE SITE LEVELS AND EXTENTS ARE CONFIRMED.

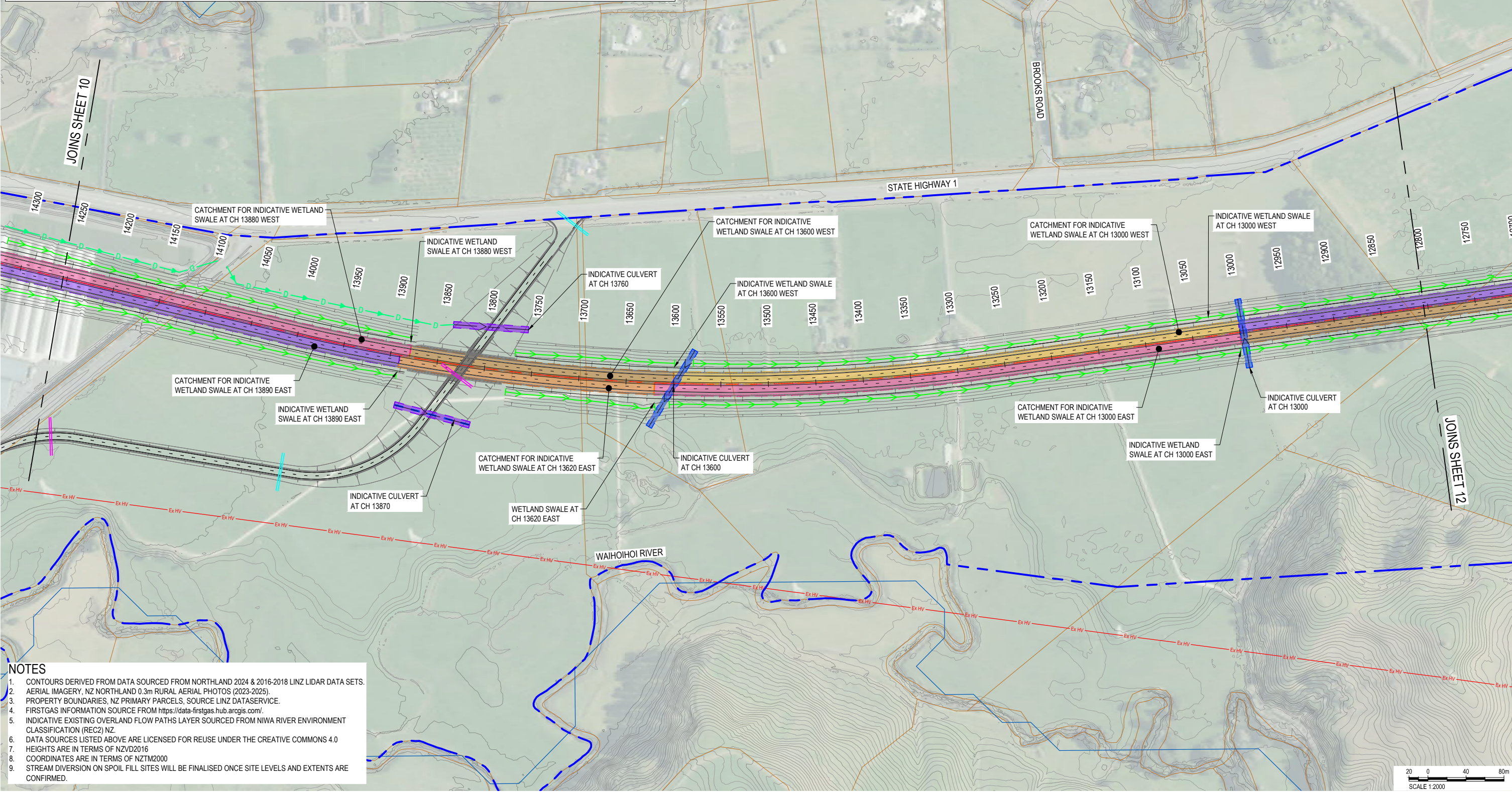
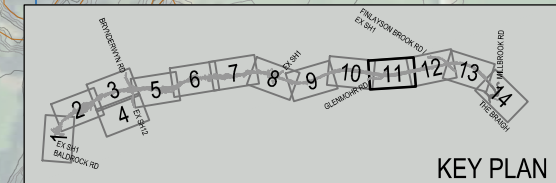
PROJECT		REV		DATE		REVISION DETAILS		APPROVED		STATUS		TITLE		PROJECT INFORMATION	
ALL INFORMATION SHOWN IS SUBJECT TO FINAL DESIGN AND THE DETAILS MAY CHANGE. AREAS AND MEASUREMENTS ARE SUBJECT TO SURVEY		A	18.02.26	CONSENT DESIGN FOR CLIENT REVIEW		R.D	DRAWN		V.HOOKER	27.03.26	CONSENT DESIGN	BRYNDERWYN HILLS SECTION INDICATIVE STORMWATER AND HYDROLOGY PLAN SHEET 10 OF 14		NORTHLAND CORRIDOR	
		B	27.03.26	DESIGN ISSUE FOR LODGEMENT		R.D	DRG CHECK		V.HOOKER	27.03.26					
										APPROVED				DOCUMENT CODE	
										R.DUPLLOY				10722-PTA-2B0-SW-DRG-1410	
										APPROVED BY				SCALE	
										R.DUPLLOY		27.03.26		1:2000	
										PROJECT LEAD				SIZE	
										T.IRELAND				A1	
														REFERENCE No.	
														SW-1410	
														REV	
														B	



COORDINATE SYSTEM: NZTM 2000, VERTICAL DATUM: NZVD2016
 ORIGINAL IN COLOUR DETAIL MAY BE LOST IF COPIED

Plot Date: 3/27/2026 12:00 pm | Plotted By: Vica Hooker | Original File: C:\P\W\SP-AUS-19000451416\10722-PTA-2B0-SW-DRG-1410.DWG | Tab: |B|

LEGEND	
PROPOSED DESIGNATION BOUNDARY (WHANGAREI DISTRICT COUNCIL)	INDICATIVE SPOIL DISPOSAL SITE
PROPOSED DESIGNATION BOUNDARY (KAIPARA DISTRICT COUNCIL)	INDICATIVE CONSTRUCTED WETLANDS
INDICATIVE FILL BATTER	INDICATIVE WETLAND SWALE
INDICATIVE CUT BATTER	INDICATIVE WETLAND DISCHARGE
HIGH POINT OF ROAD PROFILE	INDICATIVE TREATMENT SWALE
LOW POINT OF ROAD PROFILE	INDICATIVE DRAINAGE DIVERSION
STORMWATER CATCHMENT (COLOUR VARIES)	INDICATIVE CUT OFF DRAIN
INDICATIVE CENTRE LINE	INDICATIVE MAINLINE CULVERT
	INDICATIVE LOCAL ROAD CULVERT
	INDICATIVE FLUME CULVERT
	EXISTING CULVERT
	EXISTING PROPERTY BOUNDARY
	EXISTING CONTOURS
	INDICATIVE EXISTING OVERLAND FLOW PATHS
	EXISTING FIRST GAS TRANSMISSION LINE CORRIDOR
	EXISTING TRANSPOWER HENDERSON TO MARSDEN A 220KV TRANSMISSION LINE



- NOTES**
1. CONTOURS DERIVED FROM DATA SOURCED FROM NORTHLAND 2024 & 2016-2018 LINZ LIDAR DATA SETS.
 2. AERIAL IMAGERY, NZ NORTHLAND 0.3m RURAL AERIAL PHOTOS (2023-2025).
 3. PROPERTY BOUNDARIES, NZ PRIMARY PARCELS, SOURCE LINZ DATASERVICE.
 4. FIRSTGAS INFORMATION SOURCE FROM <https://data-firstgas.hub.arcgis.com/>.
 5. INDICATIVE EXISTING OVERLAND FLOW PATHS LAYER SOURCED FROM NIWA RIVER ENVIRONMENT CLASSIFICATION (REC2) NZ.
 6. DATA SOURCES LISTED ABOVE ARE LICENSED FOR REUSE UNDER THE CREATIVE COMMONS 4.0
 7. HEIGHTS ARE IN TERMS OF NZVD2016
 8. COORDINATES ARE IN TERMS OF NZTM2000
 9. STREAM DIVERSION ON SPOIL FILL SITES WILL BE FINALISED ONCE SITE LEVELS AND EXTENTS ARE CONFIRMED.

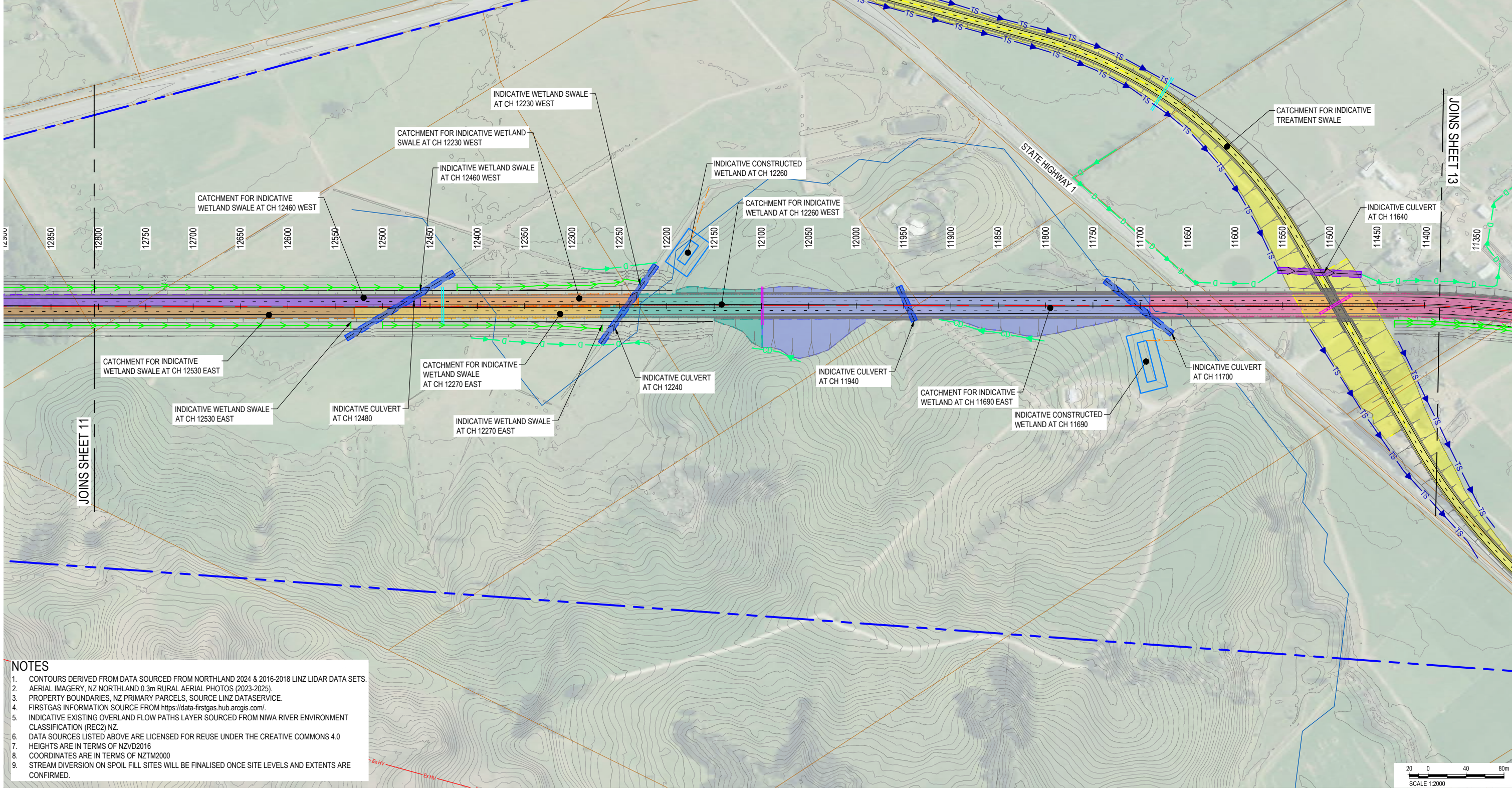
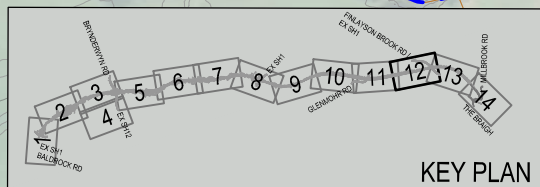
PROJECT	REV	DATE	REVISION DETAILS	APPROVED	STATUS	TITLE	PROJECT INFORMATION																																					
ALL INFORMATION SHOWN IS SUBJECT TO FINAL DESIGN AND THE DETAILS MAY CHANGE. AREAS AND MEASUREMENTS ARE SUBJECT TO SURVEY	A	18.02.26	CONSENT DESIGN FOR CLIENT REVIEW	R.D	CONSENT DESIGN	BRYNDERWYN HILLS SECTION INDICATIVE STORMWATER AND HYDROLOGY PLAN SHEET 11 OF 14	NORTHLAND CORRIDOR																																					
	B	27.03.26	DESIGN ISSUE FOR LODGEMENT	R.D																																								
<table border="1"> <tr> <td>DRAWN</td> <td>V.HOOKER</td> <td>27.03.26</td> </tr> <tr> <td>DRG CHECK</td> <td>V.HOOKER</td> <td>27.03.26</td> </tr> <tr> <td>DESIGN</td> <td>M.HASANZADEH</td> <td>27.03.26</td> </tr> <tr> <td>VERIFIED</td> <td>R.GORDON</td> <td>27.03.26</td> </tr> <tr> <td>PROJECT LEAD</td> <td>T.IRELAND</td> <td>27.03.26</td> </tr> </table>				DRAWN	V.HOOKER	27.03.26	DRG CHECK	V.HOOKER	27.03.26	DESIGN	M.HASANZADEH	27.03.26	VERIFIED	R.GORDON	27.03.26	PROJECT LEAD	T.IRELAND	27.03.26	<table border="1"> <tr> <td>APPROVED</td> <td>R.DUPLOOY</td> </tr> <tr> <td>APPROVED BY</td> <td>DATE</td> </tr> <tr> <td>R.DUPLOOY</td> <td>27.03.26</td> </tr> </table>		APPROVED	R.DUPLOOY	APPROVED BY	DATE	R.DUPLOOY	27.03.26	<table border="1"> <tr> <td colspan="4">DOCUMENT CODE</td> </tr> <tr> <td colspan="4">10722-PTA-2B0-SW-DRG-1411</td> </tr> <tr> <td>SCALE</td> <td>SIZE</td> <td>REFERENCE No.</td> <td>REV</td> </tr> <tr> <td>1:2000</td> <td>A1</td> <td>SW-1411</td> <td>B</td> </tr> </table>		DOCUMENT CODE				10722-PTA-2B0-SW-DRG-1411				SCALE	SIZE	REFERENCE No.	REV	1:2000	A1	SW-1411	B
DRAWN	V.HOOKER	27.03.26																																										
DRG CHECK	V.HOOKER	27.03.26																																										
DESIGN	M.HASANZADEH	27.03.26																																										
VERIFIED	R.GORDON	27.03.26																																										
PROJECT LEAD	T.IRELAND	27.03.26																																										
APPROVED	R.DUPLOOY																																											
APPROVED BY	DATE																																											
R.DUPLOOY	27.03.26																																											
DOCUMENT CODE																																												
10722-PTA-2B0-SW-DRG-1411																																												
SCALE	SIZE	REFERENCE No.	REV																																									
1:2000	A1	SW-1411	B																																									

COORDINATE SYSTEM: NZTM 2000, VERTICAL DATUM: NZVD2016

ORIGINAL IN COLOUR DETAIL MAY BE LOST IF COPIED

Plot Date: 3/27/2026 12:03 pm | Plotted By: Vicos Hooker | Original File: C:\P\W\WSP-AUS-19\00045141610722-PTA-2B0-SW-DRG-1411.DWG | Tab: [B]

LEGEND	
PROPOSED DESIGNATION BOUNDARY (WHANGĀREI DISTRICT COUNCIL)	INDICATIVE SPOIL DISPOSAL SITE
PROPOSED DESIGNATION BOUNDARY (KAIPARA DISTRICT COUNCIL)	INDICATIVE CONSTRUCTED WETLANDS
INDICATIVE FILL BATTER	INDICATIVE WETLAND SWALE
INDICATIVE CUT BATTER	INDICATIVE WETLAND DISCHARGE
HIGH POINT OF ROAD PROFILE	INDICATIVE TREATMENT SWALE
LOW POINT OF ROAD PROFILE	INDICATIVE DRAINAGE DIVERSION
STORMWATER CATCHMENT (COLOUR VARIES)	INDICATIVE CUT OFF DRAIN
INDICATIVE CENTRE LINE	INDICATIVE MAINLINE CULVERT
	INDICATIVE LOCAL ROAD CULVERT
	INDICATIVE FLUME CULVERT
	EXISTING CULVERT
	EXISTING PROPERTY BOUNDARY
	EXISTING CONTOURS
	INDICATIVE EXISTING OVERLAND FLOW PATHS
	EXISTING FIRST GAS TRANSMISSION LINE CORRIDOR
	EXISTING TRANSPOWER HENDERSON TO MARSDEN A 220KV TRANSMISSION LINE



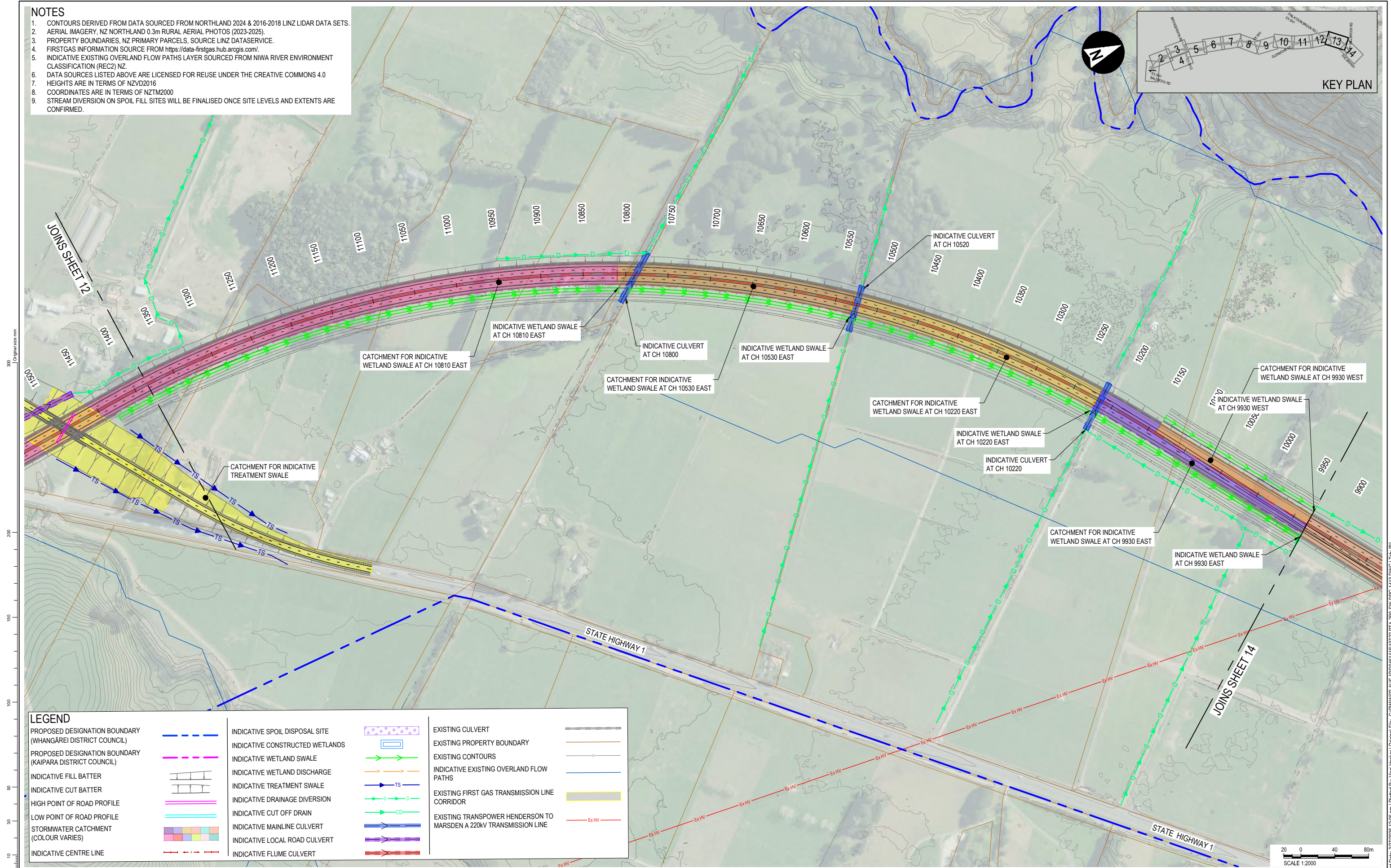
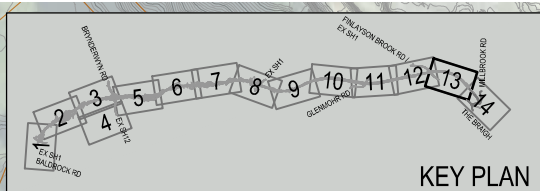
- NOTES**
1. CONTOURS DERIVED FROM DATA SOURCED FROM NORTHLAND 2024 & 2016-2018 LINZ LIDAR DATA SETS.
 2. AERIAL IMAGERY, NZ NORTHLAND 0.3m RURAL AERIAL PHOTOS (2023-2025).
 3. PROPERTY BOUNDARIES, NZ PRIMARY PARCELS, SOURCE LINZ DATASERVICE.
 4. FIRSTGAS INFORMATION SOURCE FROM <https://data-firstgas.hub.arcgis.com/>.
 5. INDICATIVE EXISTING OVERLAND FLOW PATHS LAYER SOURCED FROM NIWA RIVER ENVIRONMENT CLASSIFICATION (REC2) NZ.
 6. DATA SOURCES LISTED ABOVE ARE LICENSED FOR REUSE UNDER THE CREATIVE COMMONS 4.0
 7. HEIGHTS ARE IN TERMS OF NZVD2016
 8. COORDINATES ARE IN TERMS OF NZTM2000
 9. STREAM DIVERSION ON SPOIL FILL SITES WILL BE FINALISED ONCE SITE LEVELS AND EXTENTS ARE CONFIRMED.

PROJECT	REV	DATE	REVISION DETAILS	APPROVED	STATUS	TITLE	PROJECT INFORMATION																																							
ALL INFORMATION SHOWN IS SUBJECT TO FINAL DESIGN AND THE DETAILS MAY CHANGE. AREAS AND MEASUREMENTS ARE SUBJECT TO SURVEY	A	18.02.26	CONSENT DESIGN FOR CLIENT REVIEW	R.D	CONSENT DESIGN	BRYNDERWYN HILLS SECTION INDICATIVE STORMWATER AND HYDROLOGY PLAN SHEET 12 OF 14	NORTHLAND CORRIDOR																																							
	B	27.03.26	DESIGN ISSUE FOR LODGEMENT	R.D																																										
				<table border="1"> <tr> <td>DRAWN</td> <td>V.HOOKER</td> <td>27.03.26</td> </tr> <tr> <td>DRG CHECK</td> <td>V.HOOKER</td> <td>27.03.26</td> </tr> <tr> <td>DESIGN</td> <td>M.HASANZADEH</td> <td>27.03.26</td> </tr> <tr> <td>VERIFIED</td> <td>R.GORDON</td> <td>27.03.26</td> </tr> <tr> <td>PROJECT LEAD</td> <td>T.IRELAND</td> <td>27.03.26</td> </tr> </table>		DRAWN	V.HOOKER	27.03.26	DRG CHECK	V.HOOKER	27.03.26	DESIGN	M.HASANZADEH	27.03.26	VERIFIED	R.GORDON	27.03.26	PROJECT LEAD	T.IRELAND	27.03.26	<table border="1"> <tr> <td>APPROVED</td> <td>R.DUPLLOY</td> </tr> <tr> <td>APPROVED BY</td> <td>DATE</td> </tr> <tr> <td>R.DUPLLOY</td> <td>27.03.26</td> </tr> </table>		APPROVED	R.DUPLLOY	APPROVED BY	DATE	R.DUPLLOY	27.03.26	<table border="1"> <tr> <td colspan="4">DOCUMENT CODE</td> </tr> <tr> <td colspan="4">10722-PTA-2B0-SW-DRG-1412</td> </tr> <tr> <td>SCALE</td> <td>SIZE</td> <td>REFERENCE No.</td> <td>REV</td> </tr> <tr> <td>1:2000</td> <td>A1</td> <td>SW-1412</td> <td>B</td> </tr> </table>		DOCUMENT CODE				10722-PTA-2B0-SW-DRG-1412				SCALE	SIZE	REFERENCE No.	REV	1:2000	A1	SW-1412	B
DRAWN	V.HOOKER	27.03.26																																												
DRG CHECK	V.HOOKER	27.03.26																																												
DESIGN	M.HASANZADEH	27.03.26																																												
VERIFIED	R.GORDON	27.03.26																																												
PROJECT LEAD	T.IRELAND	27.03.26																																												
APPROVED	R.DUPLLOY																																													
APPROVED BY	DATE																																													
R.DUPLLOY	27.03.26																																													
DOCUMENT CODE																																														
10722-PTA-2B0-SW-DRG-1412																																														
SCALE	SIZE	REFERENCE No.	REV																																											
1:2000	A1	SW-1412	B																																											

COORDINATE SYSTEM: NZTM 2000, VERTICAL DATUM: NZVD2016
 ORIGINAL IN COLOUR DETAIL MAY BE LOST IF COPIED

Plot Date: 3/27/2026 12:03 pm | Plotted By: Vicos Hooker | Original File: C:\PW\WSP-AUS-19\00\045\1416\10722-PTA-2B0-SW-DRG-1412.DWG | Tab: [B]

- NOTES**
1. CONTOURS DERIVED FROM DATA SOURCED FROM NORTHLAND 2024 & 2016-2018 LINZ LIDAR DATA SETS.
 2. AERIAL IMAGERY, NZ NORTHLAND 0.3m RURAL AERIAL PHOTOS (2023-2025).
 3. PROPERTY BOUNDARIES, NZ PRIMARY PARCELS, SOURCE LINZ DATASERVICE.
 4. FIRSTGAS INFORMATION SOURCE FROM <https://data-firstgas.hub.arcgis.com/>.
 5. INDICATIVE EXISTING OVERLAND FLOW PATHS LAYER SOURCED FROM NIWA RIVER ENVIRONMENT CLASSIFICATION (REC2) NZ.
 6. DATA SOURCES LISTED ABOVE ARE LICENSED FOR REUSE UNDER THE CREATIVE COMMONS 4.0
 7. HEIGHTS ARE IN TERMS OF NZVD2016
 8. COORDINATES ARE IN TERMS OF NZTM2000
 9. STREAM DIVERSION ON SPOIL FILL SITES WILL BE FINALISED ONCE SITE LEVELS AND EXTENTS ARE CONFIRMED.



LEGEND

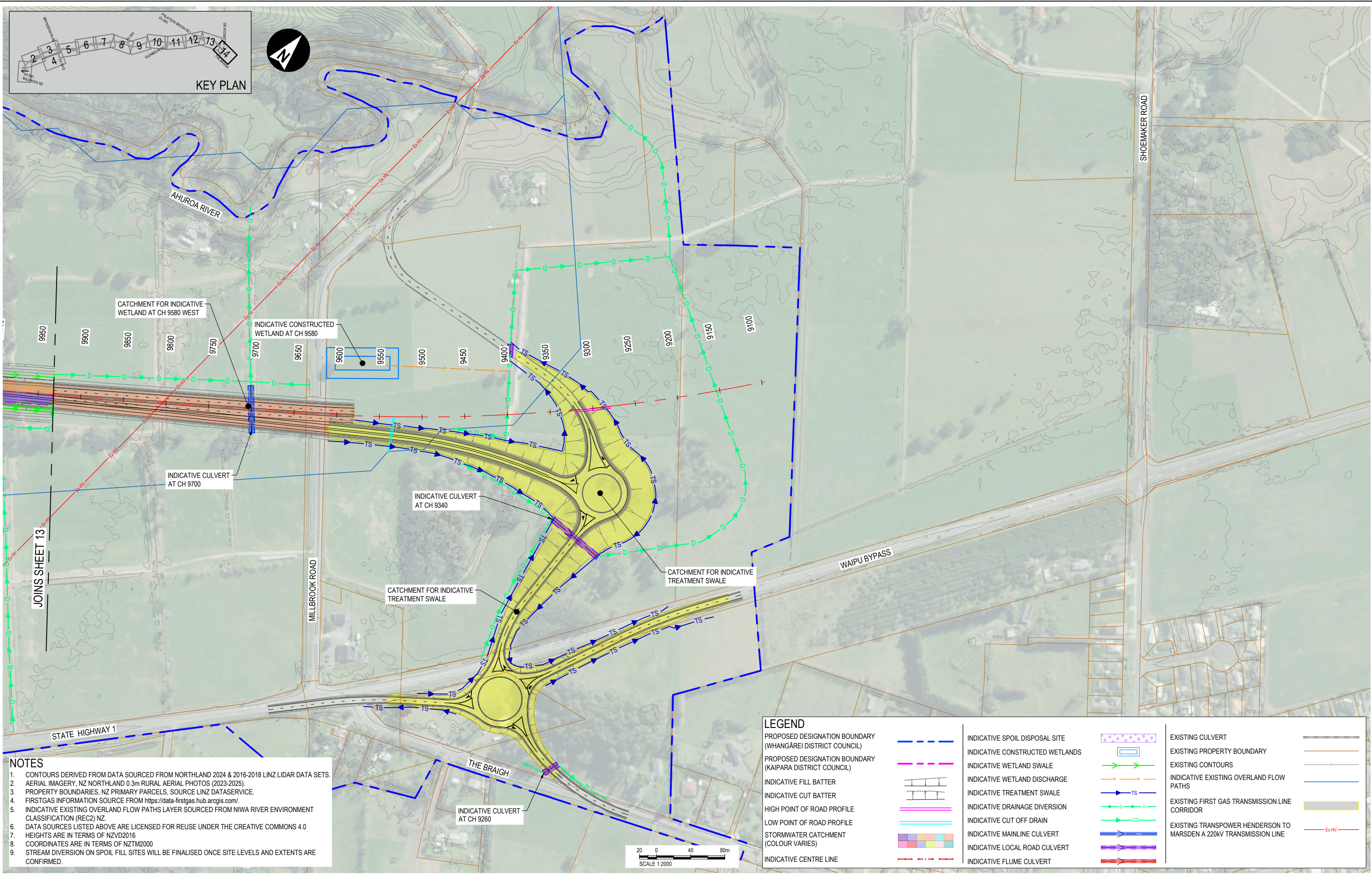
PROPOSED DESIGNATION BOUNDARY (WHANGĀREI DISTRICT COUNCIL)	INDICATIVE SPOIL DISPOSAL SITE	EXISTING CULVERT	EXISTING CONTOURS
PROPOSED DESIGNATION BOUNDARY (KAIPARA DISTRICT COUNCIL)	INDICATIVE CONSTRUCTED WETLANDS	EXISTING PROPERTY BOUNDARY	INDICATIVE EXISTING OVERLAND FLOW PATHS
INDICATIVE FILL BATTER	INDICATIVE WETLAND SWALE	INDICATIVE WETLAND DISCHARGE	EXISTING FIRST GAS TRANSMISSION LINE CORRIDOR
INDICATIVE CUT BATTER	INDICATIVE WETLAND TREATMENT SWALE	INDICATIVE TREATMENT SWALE	EXISTING TRANSPOWER HENDERSON TO MARSDEN A 220KV TRANSMISSION LINE
HIGH POINT OF ROAD PROFILE	INDICATIVE DRAINAGE DIVERSION	INDICATIVE CUT OFF DRAIN	
LOW POINT OF ROAD PROFILE	INDICATIVE MAINLINE CULVERT	INDICATIVE LOCAL ROAD CULVERT	
STORMWATER CATCHMENT (COLOUR VARIES)	INDICATIVE FLUME CULVERT		
INDICATIVE CENTRE LINE			

PROJECT		REV		DATE		REVISION DETAILS		APPROVED		STATUS		TITLE		PROJECT INFORMATION					
ALL INFORMATION SHOWN IS SUBJECT TO FINAL DESIGN AND THE DETAILS MAY CHANGE. AREAS AND MEASUREMENTS ARE SUBJECT TO SURVEY		A	18.02.26	CONSENT DESIGN FOR CLIENT REVIEW				R.D	DRAWN		V.HOOKER		27.03.26		NORTHLAND CORRIDOR				
		B	27.03.26	DESIGN ISSUE FOR LODGEMENT				R.D	DRG CHECK		V.HOOKER		27.03.26		DOCUMENT CODE				
										DESIGN		M.HASANZADEH		27.03.26		10722-PTA-2B0-SW-DRG-1413			
										VERIFIED		R.GORDON		27.03.26		SCALE			
										PROJECT LEAD		T.IRELAND		27.03.26		SIZE			
																REFERENCE No.			
																REV			
																B			



COORDINATE SYSTEM: NZTM 2000, VERTICAL DATUM: NZVD2016
 ORIGINAL IN COLOUR DETAIL MAY BE LOST IF COPIED

Plot Date: 3/27/2026 12:26 pm | Plotted By: Vica Hooker | Original File: C:\PW\SW\SP-AUS-19000451416\10722-PTA-2B0-SW-DRG-1413.DWG | Tab: [B]



NOTES

1. CONTOURS DERIVED FROM DATA SOURCED FROM NORTHLAND 2024 & 2016-2018 LINZ LIDAR DATA SETS.
2. AERIAL IMAGERY, NZ NORTHLAND 0.3m RURAL AERIAL PHOTOS (2023-2025).
3. PROPERTY BOUNDARIES, NZ PRIMARY PARCELS, SOURCE LINZ DATASERVICE.
4. FIRSTGAS INFORMATION SOURCE FROM <https://data-firstgas.hub.arogis.com/>.
5. INDICATIVE EXISTING OVERLAND FLOW PATHS LAYER SOURCED FROM NIWA RIVER ENVIRONMENT CLASSIFICATION (REC2) NZ.
6. DATA SOURCES LISTED ABOVE ARE LICENSED FOR REUSE UNDER THE CREATIVE COMMONS 4.0
7. HEIGHTS ARE IN TERMS OF NZVD2016
8. COORDINATES ARE IN TERMS OF NZTM2000
9. STREAM DIVERSION ON SPOIL FILL SITES WILL BE FINALISED ONCE SITE LEVELS AND EXTENTS ARE CONFIRMED.

LEGEND	
PROPOSED DESIGNATION BOUNDARY (WHANGAREI DISTRICT COUNCIL)	INDICATIVE SPOIL DISPOSAL SITE
PROPOSED DESIGNATION BOUNDARY (KAIPARA DISTRICT COUNCIL)	INDICATIVE CONSTRUCTED WETLANDS
INDICATIVE FILL BATTER	INDICATIVE WETLAND SWALE
INDICATIVE CUT BATTER	INDICATIVE WETLAND DISCHARGE
HIGH POINT OF ROAD PROFILE	INDICATIVE TREATMENT SWALE
LOW POINT OF ROAD PROFILE	INDICATIVE DRAINAGE DIVERSION
STORMWATER CATCHMENT (COLOUR VARIES)	INDICATIVE CUT OFF DRAIN
INDICATIVE CENTRE LINE	INDICATIVE MAINLINE CULVERT
	INDICATIVE LOCAL ROAD CULVERT
	INDICATIVE FLUME CULVERT
	EXISTING CULVERT
	EXISTING PROPERTY BOUNDARY
	EXISTING CONTOURS
	INDICATIVE EXISTING OVERLAND FLOW PATHS
	EXISTING FIRST GAS TRANSMISSION LINE CORRIDOR
	EXISTING TRANSPOWER HENDERSON TO MARSDEN A 220KV TRANSMISSION LINE



PROJECT			REVISIONS			APPROVED			STATUS		TITLE		PROJECT INFORMATION			
ALL INFORMATION SHOWN IS SUBJECT TO FINAL DESIGN AND THE DETAILS MAY CHANGE. AREAS AND MEASUREMENTS ARE SUBJECT TO SURVEY			REV	DATE	REVISION DETAILS	R.D			CONSENT DESIGN		BRYNDERWYN HILLS SECTION INDICATIVE STORMWATER AND HYDROLOGY PLAN		NORTHLAND CORRIDOR			
			A	18.02.26	CONSENT DESIGN FOR CLIENT REVIEW	R.D			APPROVED		SHEET 14 OF 14		DOCUMENT CODE			
			B	27.03.26	DESIGN ISSUE FOR LODGEMENT	R.D			R.DUPLLOY				10722-PTA-2B0-SW-DRG-1414			
									APPROVED BY	DATE			SCALE	SIZE	REFERENCE No.	REV
									R.DUPLLOY	27.03.26			1:2000	A1	SW-1414	B



COORDINATE SYSTEM: NZTM 2000, VERTICAL DATUM: NZVD2016
 ORIGINAL IN COLOUR DETAIL MAY BE LOST IF COPIED

Plot Date: 3/27/2026 12:25 pm | Plotted By: Vica Hooker | Original File: C:\P\W\SP-AUS-19000451416\10722-PTA-2B0-SW-DRG-1414.DWG | Tab: [B]