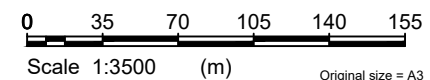


Legend

- Property Boundary
- Contours Major 25.0m
- Contours Minor 5.0m
- Overland Flowpaths
- Waitoki Stream
- Proposed Earthworks Extents
- Culvert
- - - Clean Water Diversion Bund
- Dirty Water Diversion Bund
- - - Silt Fence
- - - Approx. catchment boundary (≤5Ha)

- Notes:**
1. Detailed ESC plans suitable for construction will be prepared and submitted to Council prior to commencement of physical works on site.
 2. All sediment control measures must be operational prior to any other works commencing on site.
 3. The contractor shall arrange for and attend a preliminary erosion control meeting on site with the engineer and/or Councils monitoring officer
 4. The sediment pond shall be excavated to the required dimensions and the floating decanting device made operational before any topsoil stripping commences
 5. All sediment ponds are to discharge to suitable locations with stabilised outfalls.
 6. The main diversion drains shall remain operational at all times. Locations of diversions are indicative and may change on site as required, up to maximum catchments size.
 7. The erosion and sediment control measures described on this plan are a minimum. Further control works may be required as the project progresses. These may include progress stabilisation or controls like mulch, hay, silt fences etc.
 8. The proposed erosion and sediment control measures are subject to change depending on site constraints and works staging. The Councils monitoring officer should be notified of any changes.
 9. The contractor is solely responsible for ensuring that the site has effective erosion control and sediment retention measures operating at all times.
 10. Any collected sediment to be disposed to a suitable facility.
 11. All sediment control measures are to comply with Auckland Council GD05.



Copyright: LDE All rights reserved / Do not scale off drawings / Confirm all dimensions on site prior to work

Client
Kings Quarry Ltd

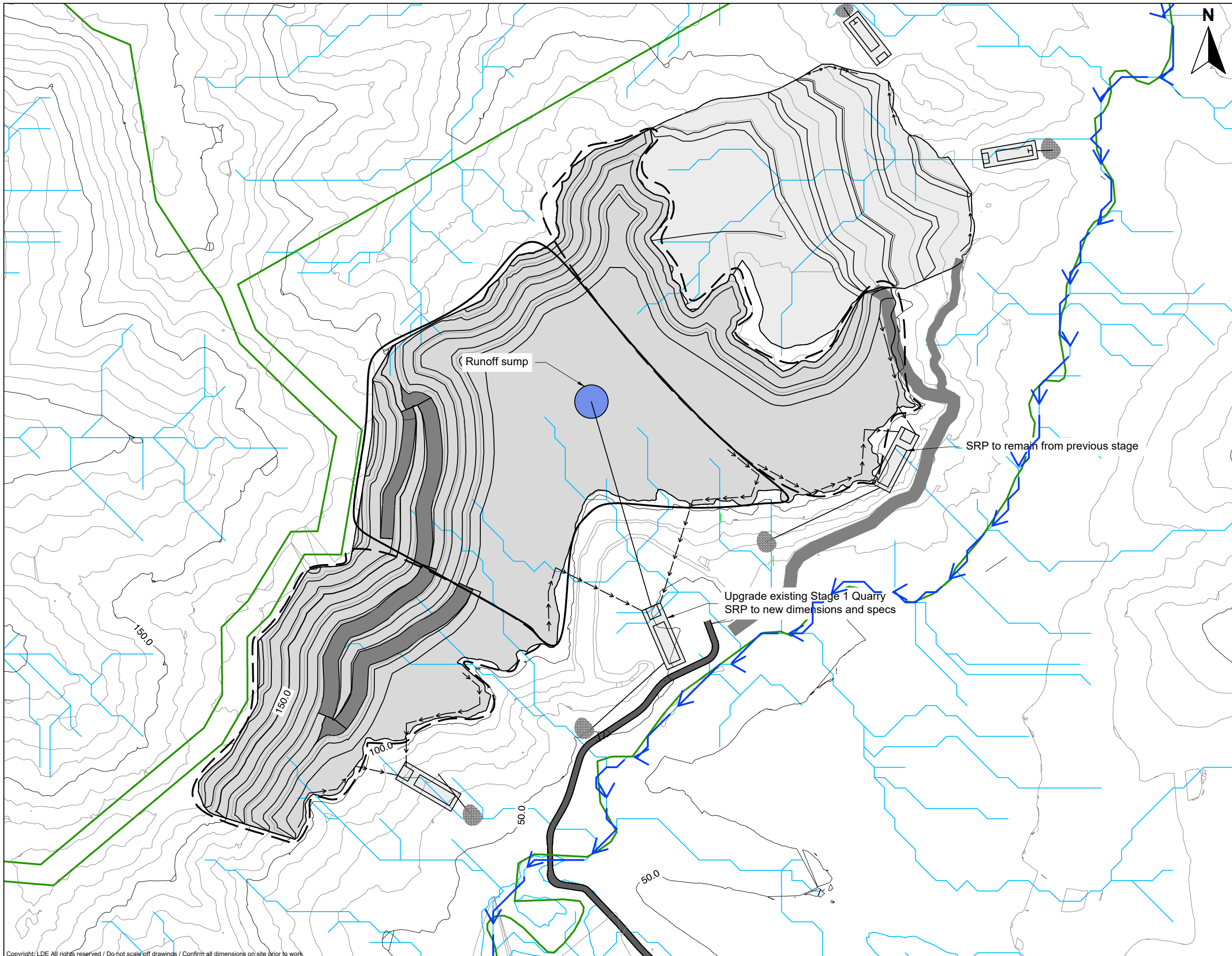
Project
**Kings Quarry
306 Pebble Brook Road
Wainui**

Drawing Title
**Sediment Control Plan
Year 16-20**



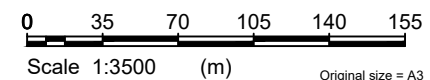
No.	Issue/Revision	Apprvd	Date
D	Updated design issued for consent	HD	03Mar2025
B	Updated design issued for consent	HD	27/10/23
A	Issued for consent	HD	13/10/23

Design:	Y. Choi	Project status:	Consent
Drawn:	Y. Choi	Project:	25050
Approved:	H. Dubinko	Drawing No.:	207
Scale A3:	1:3500	Issue/Rev:	D



Legend	
	Property Boundary
	Contours Major 25.0m
	Contours Minor 5.0m
	Overland Flowpaths
	Waitoki Stream
	Proposed Earthworks Extents
	Culvert
	Clean Water Diversion Bund
	Dirty Water Diversion Bund
	Silt Fence
	Approx. catchment boundary ($\le 5\text{Ha}$)

- Notes:**
- Detailed ESC plans suitable for construction will be prepared and submitted to Council prior to commencement of physical works on site.
 - All sediment control measures must be operational prior to any other works commencing on site.
 - The contractor shall arrange for and attend a preliminary erosion control meeting on site with the engineer and/or Councils monitoring officer
 - The sediment pond shall be excavated to the required dimensions and the floating decanting device made operational before any topsoil stripping commences
 - All sediment ponds are to discharge to suitable locations with stabilised outfalls.
 - The main diversion drains shall remain operational at all times. Locations of diversions are indicative and may change on site as required, up to maximum catchments size.
 - The erosion and sediment control measures described on this plan are a minimum. Further control works may be required as the project progresses. These may include progress stabilisation or controls like mulch, hay, silt fences etc.
 - The proposed erosion and sediment control measures are subject to change depending on site constraints and works staging. The Councils monitoring officer should be notified of any changes.
 - The contractor is solely responsible for ensuring that the site has effective erosion control and sediment retention measures operating at all times.
 - Any collected sediment to be disposed to a suitable facility.
 - All sediment control measures are to comply with Auckland Council GD05.



Copyright/LDE All rights reserved / Do not scale off drawings / Confirm all dimensions on site prior to work.

Client
Kings Quarry Ltd

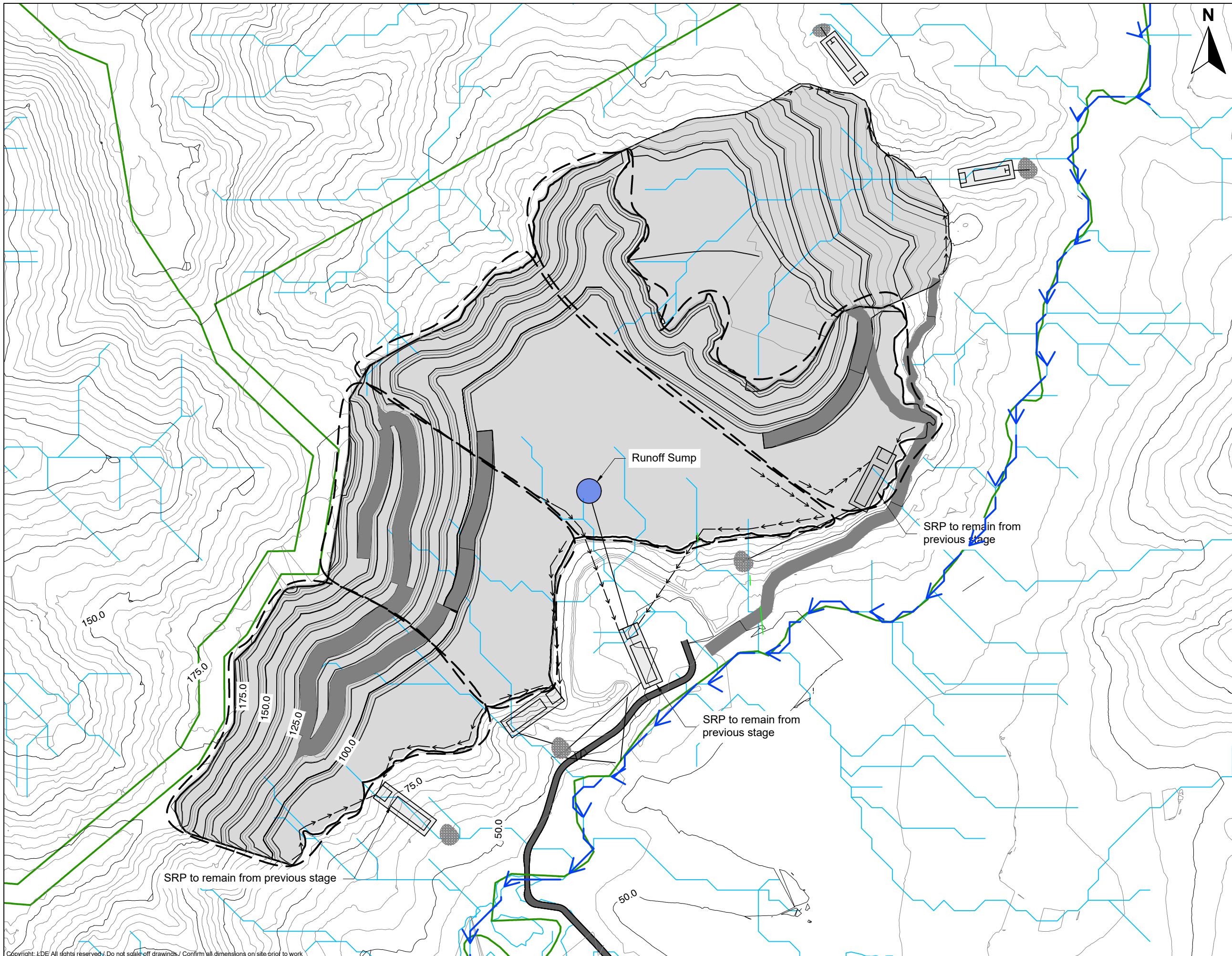
Project
Kings Quarry
306 Pebble Brook Road
Wainui

Drawing Title
Sediment Control Plan
Year 21-25



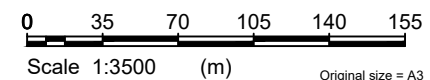
No.	Issue/Revision	Apprvd	Date
D	Updated design issued for consent	HD	03Mar2025
B	Updated design issued for consent	HD	27/10/23
A	Issued for consent	HD	13/10/23

Design:	Y. Choi	Project status:	Consent
Drawn:	Y. Choi	Project:	25050
Approved:	H. Dubinko	Drawing No.:	208
Scale A3:	1:3500	Issue/Rev:	D



Legend	
	Property Boundary
	Contours Major 25.0m
	Contours Minor 5.0m
	Overland Flowpaths
	Waitoki Stream
	Proposed Earthworks Extents
	Culvert
	Clean Water Diversion Bund
	Dirty Water Diversion Bund
	Silt Fence
	Approx. catchment boundary (<=5Ha)

- Notes:**
- Detailed ESC plans suitable for construction will be prepared and submitted to Council prior to commencement of physical works on site.
 - All sediment control measures must be operational prior to any other works commencing on site.
 - The contractor shall arrange for and attend a preliminary erosion control meeting on site with the engineer and/or Councils monitoring officer
 - The sediment pond shall be excavated to the required dimensions and the floating decanting device made operational before any topsoil stripping commences
 - All sediment ponds are to discharge to suitable locations with stabilised outfalls.
 - The main diversion drains shall remain operational at all times. Locations of diversions are indicative and may change on site as required, up to maximum catchments size.
 - The erosion and sediment control measures described on this plan are a minimum. Further control works may be required as the project progresses. These may include progress stabilisation or controls like mulch, hay, silt fences etc.
 - The proposed erosion and sediment control measures are subject to change depending on site constraints and works staging. The Councils monitoring officer should be notified of any changes.
 - The contractor is solely responsible for ensuring that the site has effective erosion control and sediment retention measures operating at all times.
 - Any collected sediment to be disposed to a suitable facility.
 - All sediment control measures are to comply with Auckland Council GD05.



Copyright, LDE All rights reserved. Do not scale off drawings. Confirm all dimensions on site prior to work.

Client
Kings Quarry Ltd

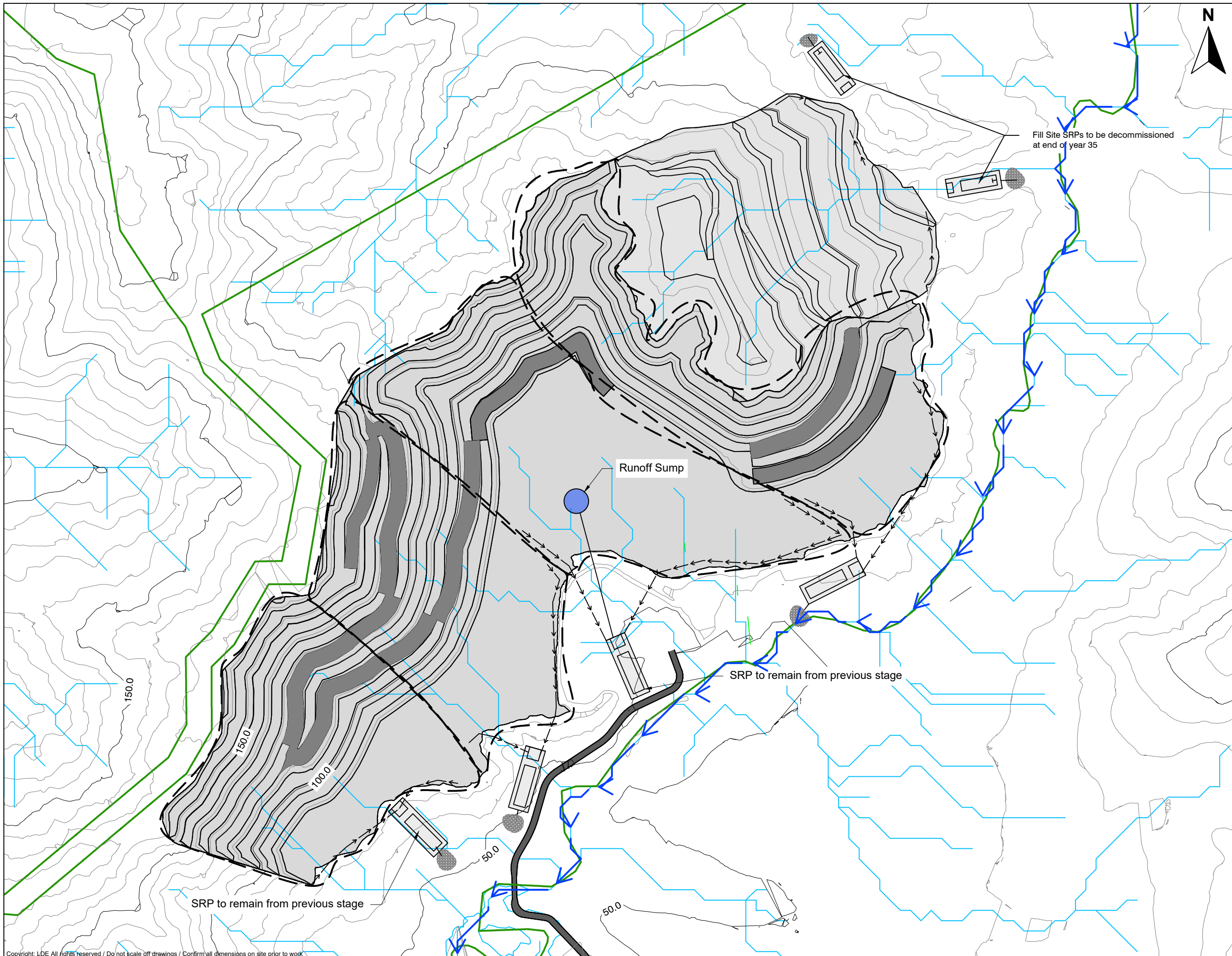
Project
Kings Quarry
306 Pebble Brook Road
Wainui

Drawing Title
Sediment Control Plan
Year 26-30



No.	Issue/Revision	Apprvd	Date
D	Updated design issued for consent	HD	03Mar2025
B	Updated design issued for consent	HD	27/10/23
A	Issued for consent	HD	13/10/23

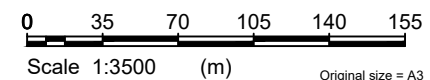
Design:	Y. Choi	Project status:	Consent
Drawn:	Y. Choi	Project:	25050
Approved:	H. Dubinko	Drawing No.:	209
Scale A3:	1:3500	Issue/Rev:	D



Legend

- Property Boundary
- Contours Major 25.0m
- Contours Minor 5.0m
- Overland Flowpaths
- Waitoki Stream
- Proposed Earthworks Extents
- Culvert
- > Clean Water Diversion Bund
- - -> Dirty Water Diversion Bund
- - - Silt Fence
- - - Approx. catchment boundary (≤5Ha)

- Notes:**
1. Detailed ESC plans suitable for construction will be prepared and submitted to Council prior to commencement of physical works on site.
 2. All sediment control measures must be operational prior to any other works commencing on site.
 3. The contractor shall arrange for and attend a preliminary erosion control meeting on site with the engineer and/or Councils monitoring officer
 4. The sediment pond shall be excavated to the required dimensions and the floating decanting device made operational before any topsoil stripping commences
 5. All sediment ponds are to discharge to suitable locations with stabilised outfalls.
 6. The main diversion drains shall remain operational at all times. Locations of diversions are indicative and may change on site as required, up to maximum catchments size.
 7. The erosion and sediment control measures described on this plan are a minimum. Further control works may be required as the project progresses. These may include progress stabilisation or controls like mulch, hay, silt fences etc.
 8. The proposed erosion and sediment control measures are subject to change depending on site constraints and works staging. The Councils monitoring officer should be notified of any changes.
 9. The contractor is solely responsible for ensuring that the site has effective erosion control and sediment retention measures operating at all times.
 10. Any collected sediment to be disposed to a suitable facility.
 11. All sediment control measures are to comply with Auckland Council GD05.



Copyright: LDE All rights reserved / Do not scale off drawings / Confirm all dimensions on site prior to work

Client
Kings Quarry Ltd

Project
**Kings Quarry
306 Pebble Brook Road
Wainui**

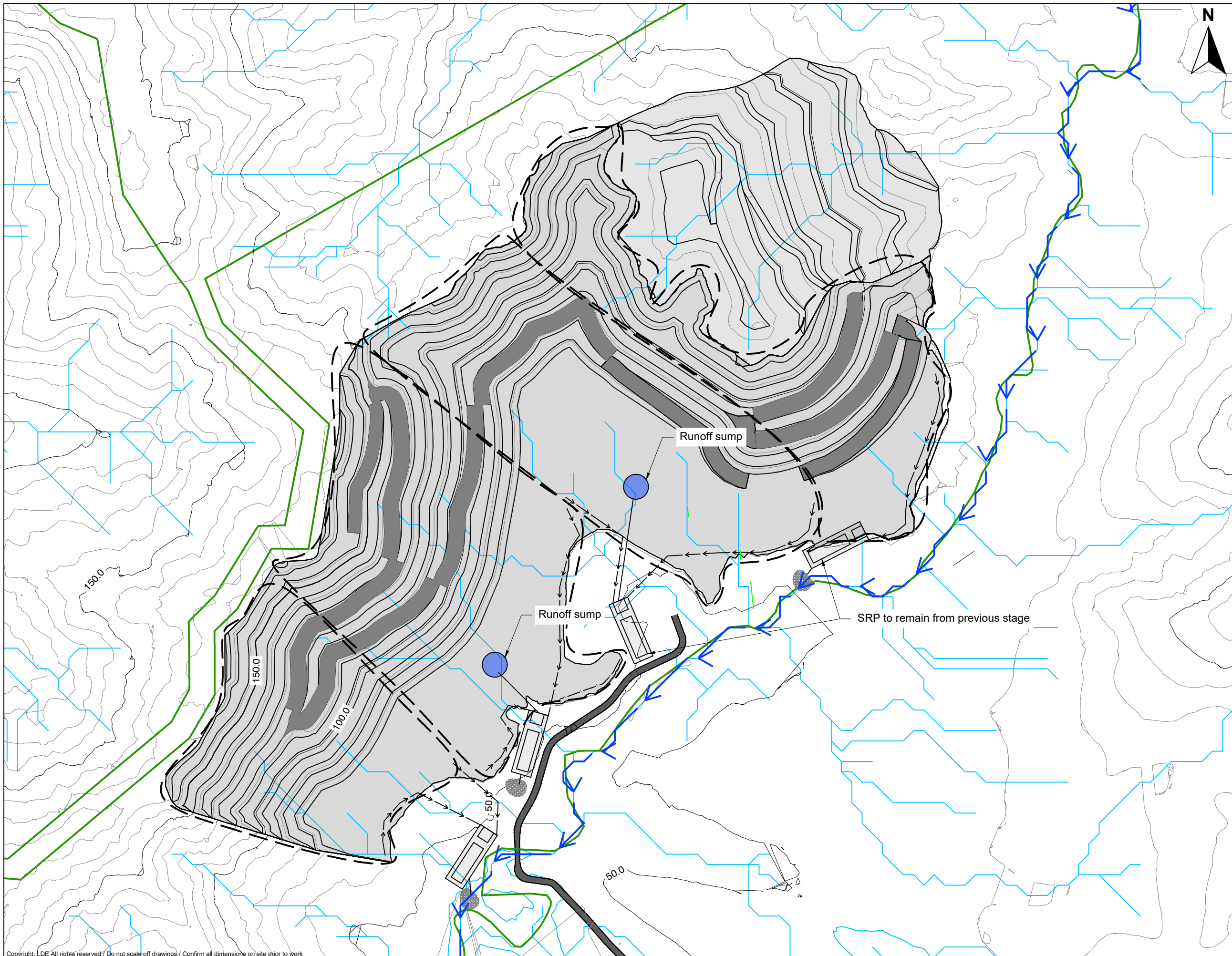
Drawing Title
**Sediment Control Plan
Year 31-35**



No.	Issue/Revision	Apprvd	Date
D	Updated design issued for consent	HD	03Mar2025
B	Updated design issued for consent	HD	27/10/23
A	Issued for consent	HD	13/10/23

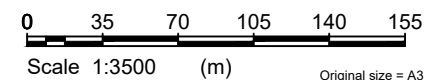
Design: Y. Choi
Drawn: Y. Choi
Approved: H. Dubinko
Scale A3: 1:3500

Project status:
Consent
Project:
25050
Drawing No:
210
Issue/Rev:
D



Legend	
	Property Boundary
	Contours Major 25.0m
	Contours Minor 5.0m
	Overland Flowpaths
	Waitoki Stream
	Proposed Earthworks Extents
	Culvert
	Clean Water Diversion Bund
	Dirty Water Diversion Bund
	Silt Fence
	Approx. catchment boundary (≤5Ha)

- Notes:**
- Detailed ESC plans suitable for construction will be prepared and submitted to Council prior to commencement of physical works on site.
 - All sediment control measures must be operational prior to any other works commencing on site.
 - The contractor shall arrange for and attend a preliminary erosion control meeting on site with the engineer and/or Councils monitoring officer
 - The sediment pond shall be excavated to the required dimensions and the floating decanting device made operational before any topsoil stripping commences
 - All sediment ponds are to discharge to suitable locations with stabilised outfalls.
 - The main diversion drains shall remain operational at all times. Locations of diversions are indicative and may change on site as required, up to maximum catchments size.
 - The erosion and sediment control measures described on this plan are a minimum. Further control works may be required as the project progresses. These may include progress stabilisation or controls like mulch, hay, silt fences etc.
 - The proposed erosion and sediment control measures are subject to change depending on site constraints and works staging. The Councils monitoring officer should be notified of any changes.
 - The contractor is solely responsible for ensuring that the site has effective erosion control and sediment retention measures operating at all times.
 - Any collected sediment to be disposed to a suitable facility.
 - All sediment control measures are to comply with Auckland Council GD05.



Copyright: LDE All rights reserved / Do not scale off drawings / Confirm all dimensions on site prior to work

Client
Kings Quarry Ltd

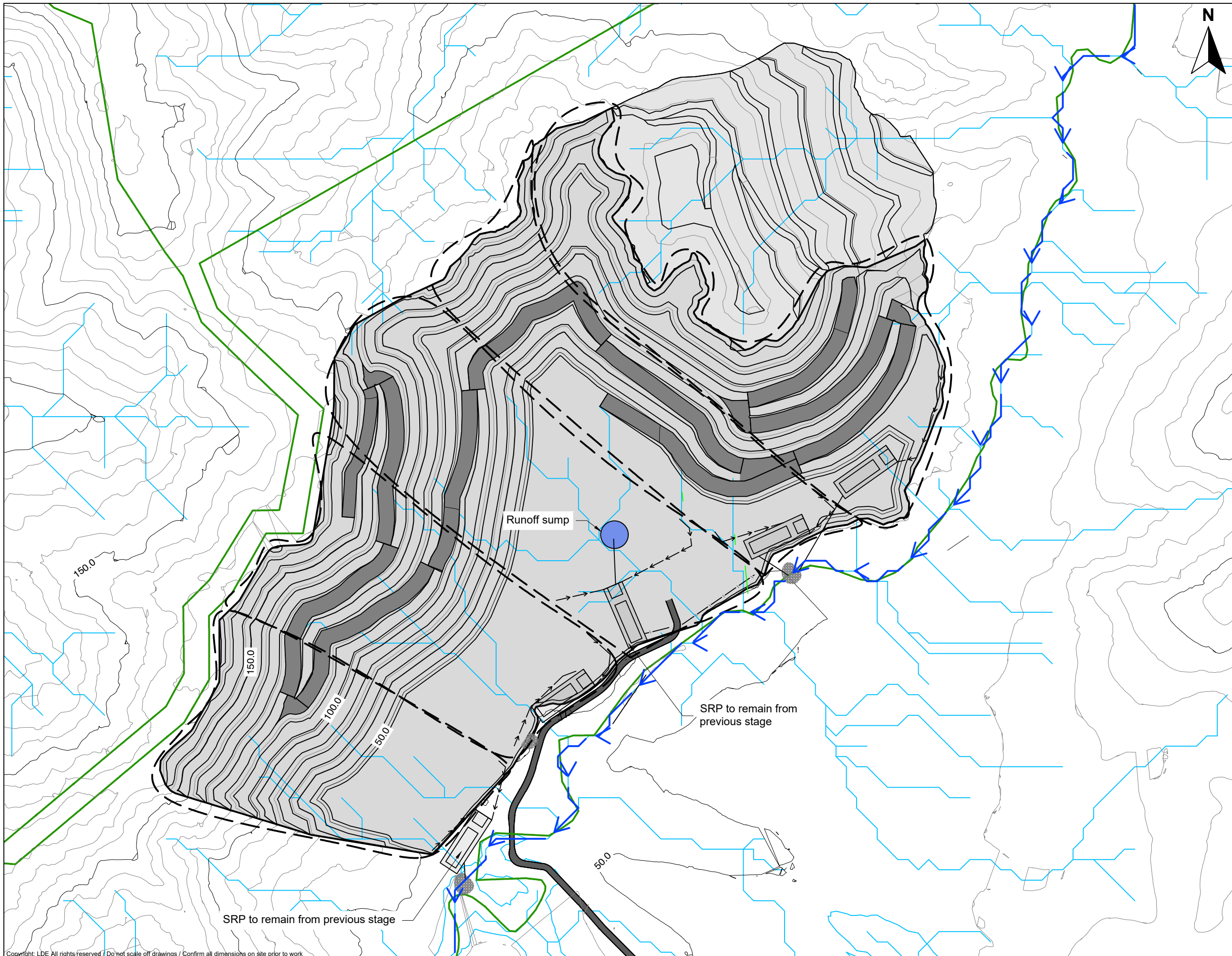
Project
Kings Quarry
306 Pebble Brook Road
Wainui

Drawing Title
Sediment Control Plan
Year 36-40



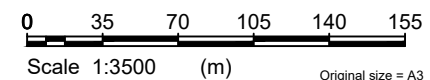
No.	Issue/Revision	Apprvd	Date
D	Updated design issued for consent	HD	03Mar2025
B	Updated design issued for consent	HD	27/10/23
A	Issued for consent	HD	13/10/23

Design:	Y. Choi	Project status:	Consent
Drawn:	Y. Choi	Project:	25050
Approved:	H. Dubinko	Drawing No.:	211
Scale A3:	1:3500	Issue/Rev:	D



- Legend**
- Property Boundary
 - Contours Major 25.0m
 - Contours Minor 5.0m
 - Overland Flowpaths
 - Waitoki Stream
 - Proposed Earthworks Extents
 - Culvert
 - - - Clean Water Diversion Bund
 - - - Dirty Water Diversion Bund
 - - - Silt Fence
 - - - Approx. catchment boundary (<=5Ha)

- Notes:**
1. Detailed ESC plans suitable for construction will be prepared and submitted to Council prior to commencement of physical works on site.
 2. All sediment control measures must be operational prior to any other works commencing on site.
 3. The contractor shall arrange for and attend a preliminary erosion control meeting on site with the engineer and/or Councils monitoring officer
 4. The sediment pond shall be excavated to the required dimensions and the floating decanting device made operational before any topsoil stripping commences
 5. All sediment ponds are to discharge to suitable locations with stabilised outfalls.
 6. The main diversion drains shall remain operational at all times. Locations of diversions are indicative and may change on site as required, up to maximum catchments size.
 7. The erosion and sediment control measures described on this plan are a minimum. Further control works may be required as the project progresses. These may include progress stabilisation or controls like mulch, hay, silt fences etc.
 8. The proposed erosion and sediment control measures are subject to change depending on site constraints and works staging. The Councils monitoring officer should be notified of any changes.
 9. The contractor is solely responsible for ensuring that the site has effective erosion control and sediment retention measures operating at all times.
 10. Any collected sediment to be disposed to a suitable facility.
 11. All sediment control measures are to comply with Auckland Council GD05.



Copyright: LDE All rights reserved / Do not scale off drawings / Confirm all dimensions on site prior to work

Client
Kings Quarry Ltd

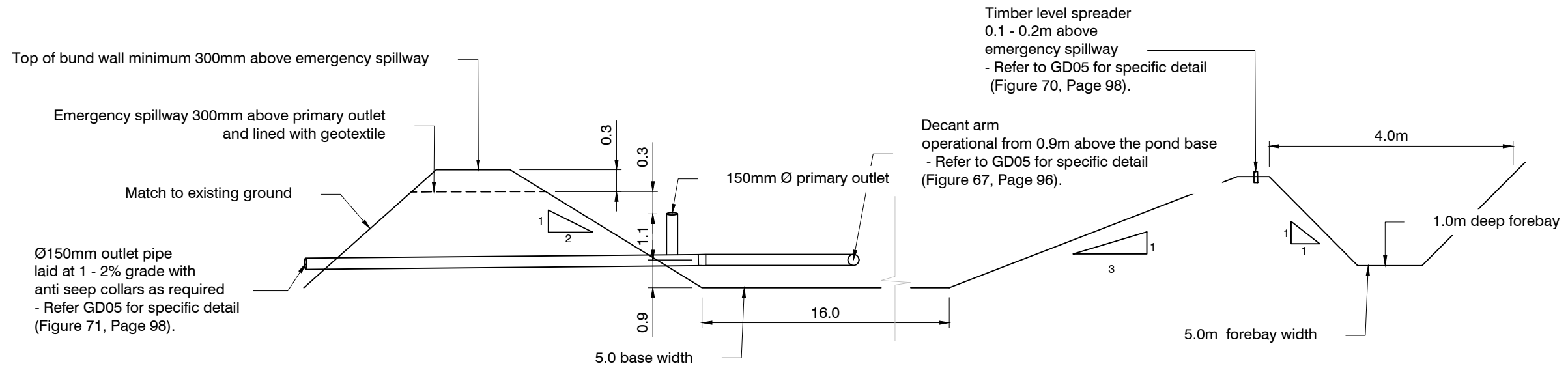
Project
**Kings Quarry
306 Pebble Brook Road
Wainui**

Drawing Title
**Sediment Control Plan
Year 41-45**

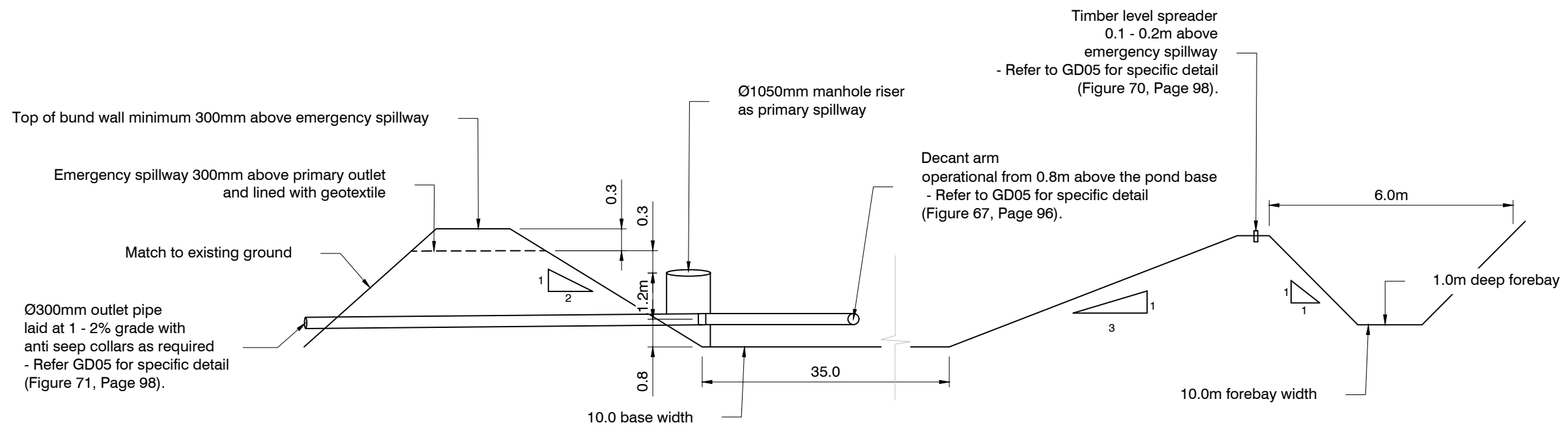


No.	Issue/Revision	Apprvd	Date
D	Updated design issued for consent	HD	03Mar2025
B	Updated design issued for consent	HD	27/10/23
A	Issued for consent	HD	13/10/23

Design:	Y. Choi	Project status:	Consent
Drawn:	Y. Choi	Project:	25050
Approved:	H. Dubinko	Drawing No.:	212
Scale A3:	1:3500	Issue/Rev:	D



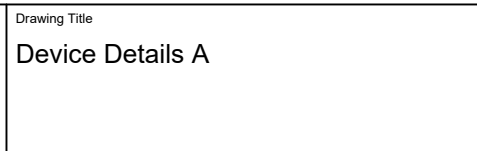
Sediment Retention Pond - Fill Site Access Road
Scale: NTS



Sediment Retention Pond - Fill Site
Scale: NTS

Client	Project
Kings Quarry Ltd	Kings Quarry 306 Pebble Brook Road Wainui

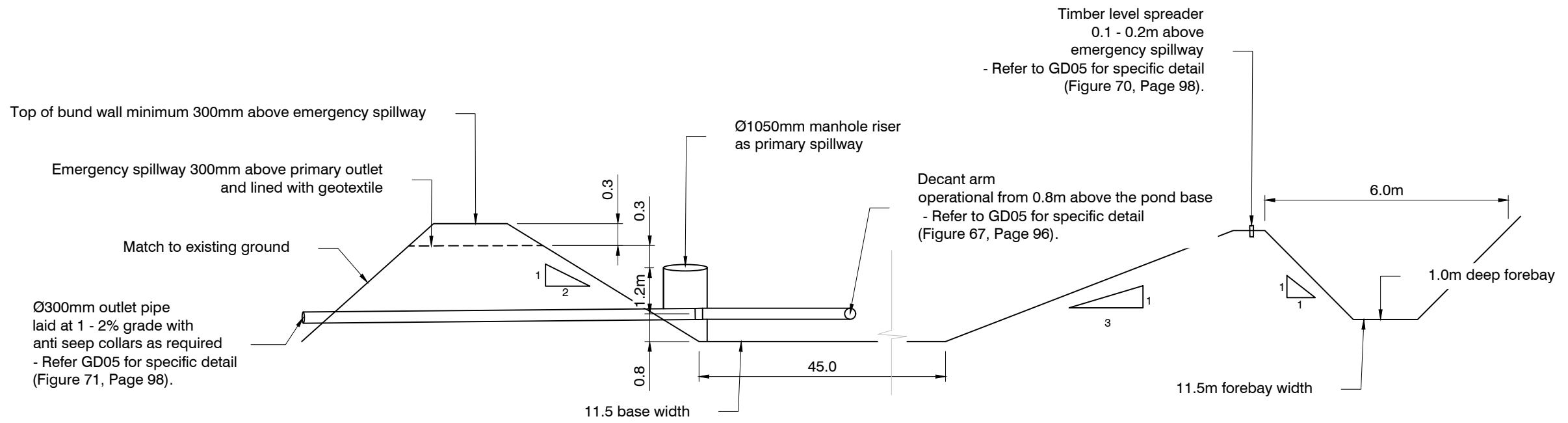
Drawing Title
Device Details A



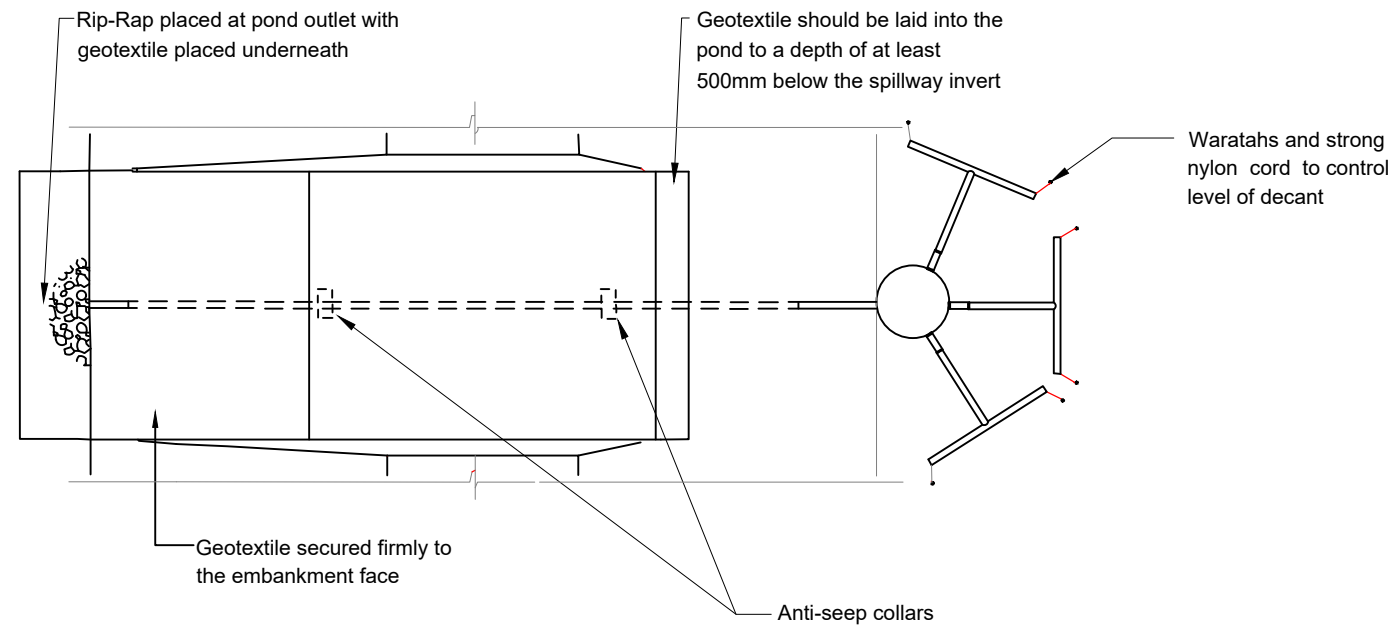
Design:	Y. Choi
Drawn:	Y. Choi
Approved:	H. Dubinko
Scale A3:	NTS

Project status:	Consent
Project:	25050
Drawing No:	213
Issue/Revision	Issue/Revision
Aprvd	Date

Issue/Revision	Aprvd	Date
D	Updated design issued for consent	HD 03Mar2025
B	Updated design issued for consent	HD 27/10/23
A	Issued for consent	HD 13/10/23
No.	Issue/Revision	Aprvd



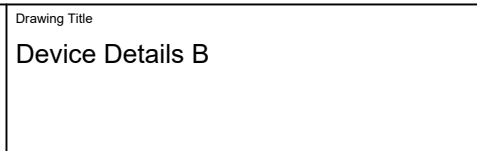
Sediment Retention Pond - Main Quarry
Scale: NTS



Typical Detail: Spillway Arrangement Of Sediment Retention
Scale: NTS

Client	Project
Kings Quarry Ltd	Kings Quarry 306 Pebble Brook Road Wainui

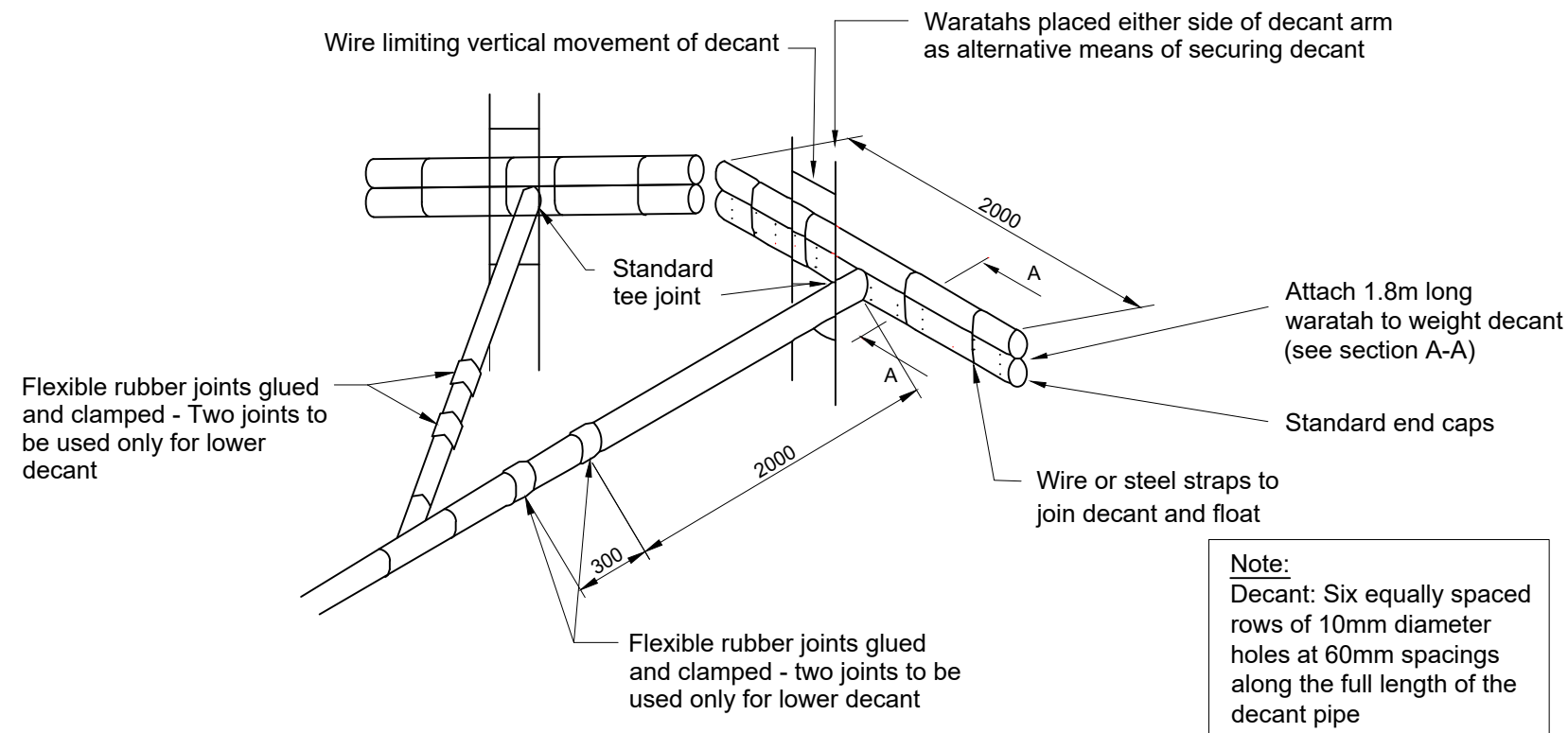
Drawing Title
Device Details B



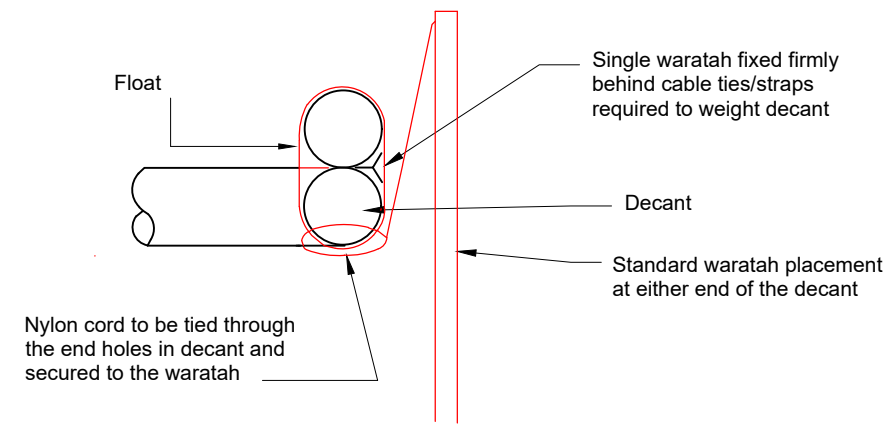
Design:	Y. Choi
Drawn:	Y. Choi
Approved:	H. Dubinko
Scale A3:	NTS

Project status:	Consent
Project:	25050
Drawing No:	214
Issue/Revision	Issue/Revision

Issue/Revision	Issue/Revision
No.	Date
1	13/10/23
2	27/10/23
3	03Mar2025



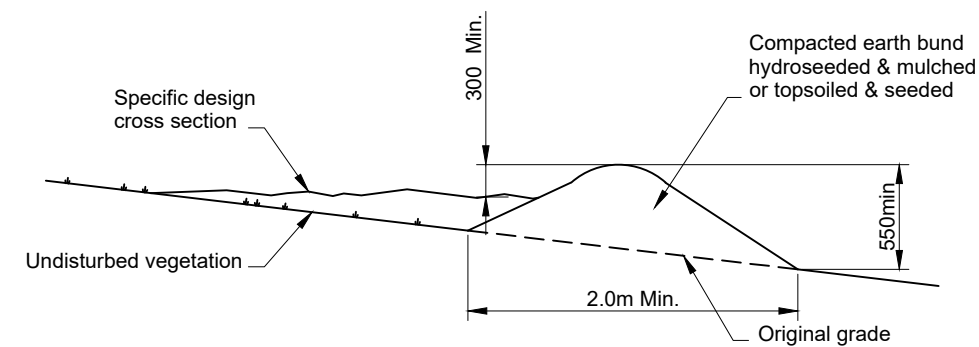
Decant System (1.0 ha - 2.0ha)
 Decant System (2.0ha - 3.0ha) - Use 3 Decants
 Scale: NTS



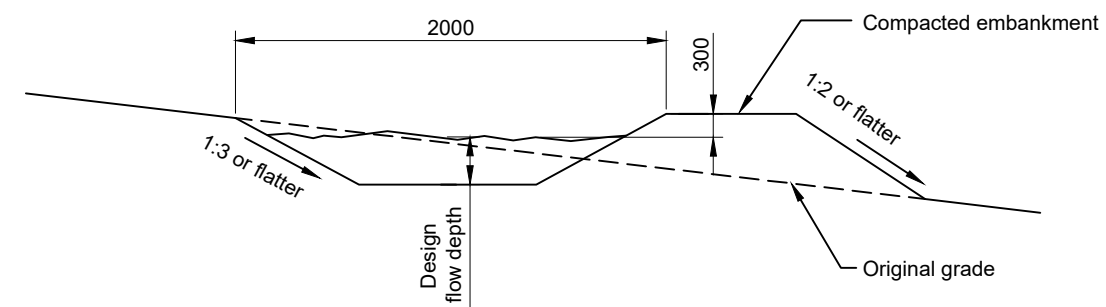
Section A
 NTS
 Section A Through Decant

Number of hectares	Number of T-Bars	Design decant (3l/s/ha)	# holes to block off (of 200 total)
1	1	3 l/s	1/3 (66) of the decant
2	2	6 l/s	1/6 (33) of the decant
3-5	3	9 l/s	None

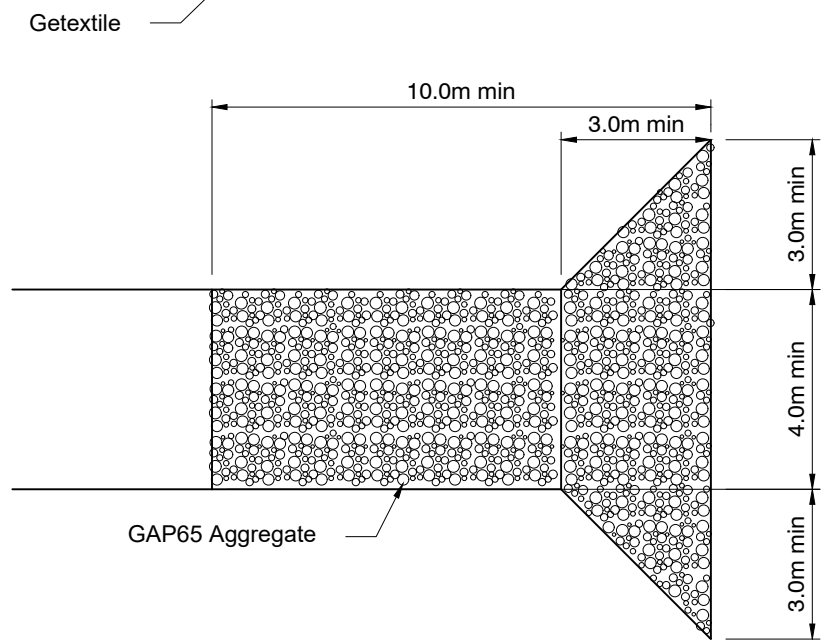
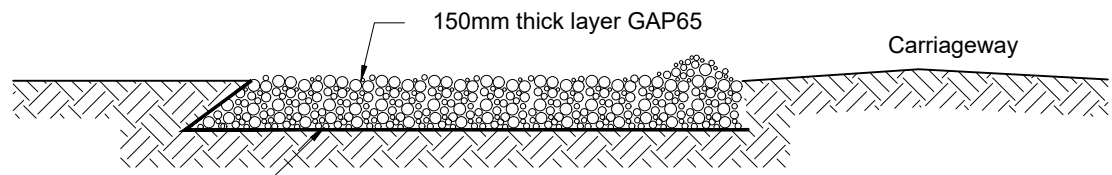
Decant System Requirements



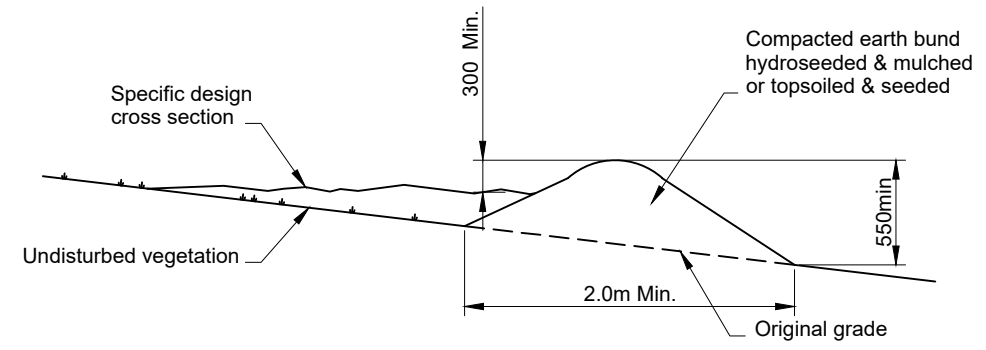
Cleanwater Runoff Diversion: Typical Cross Section
 Scale: NTS
 (Typical dimensions unless noted otherwise)



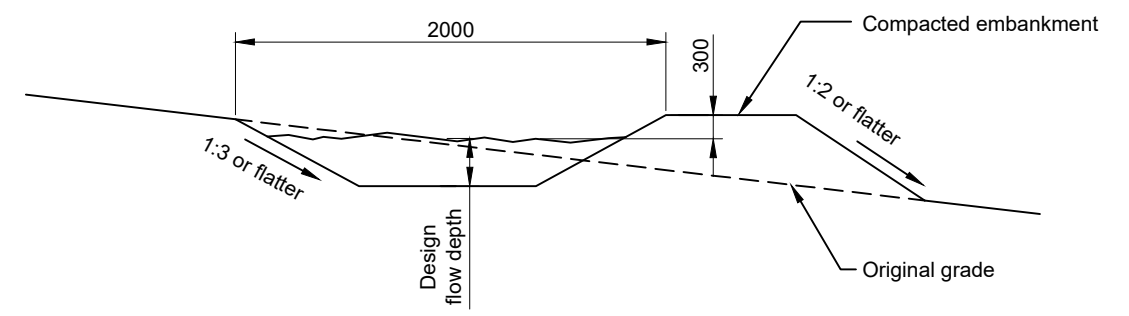
Dirty Water Runoff Diversion: Typical Cross Section
 Scale: NTS
 (Typical dimensions unless noted otherwise)



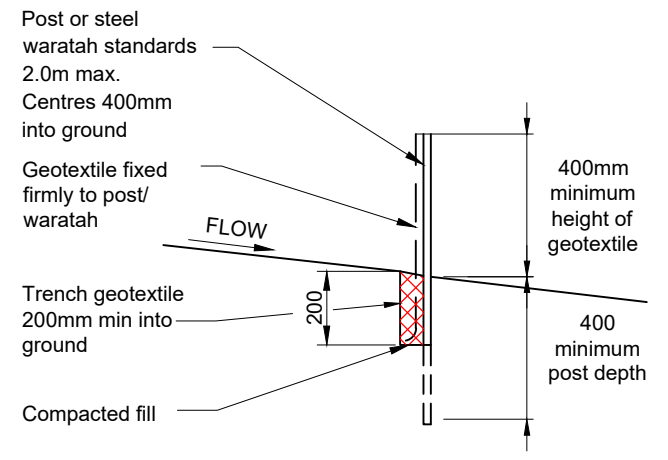
Stabilised Accessway
N.T.S



Cleanwater Runoff Diversion: Typical Cross Section
Scale: NTS
(Typical dimensions unless noted otherwise)



Dirty Water Runoff Diversion: Typical Cross Section
Scale: NTS
(Typical dimensions unless noted otherwise)



Standard Silt Fence Construction
Scale: NTS

Copyright: LDE All rights reserved / Do not scale off drawings / Confirm all dimensions on site prior to work

Original size = A3

Client	Project
Kings Quarry Ltd	Kings Quarry 306 Pebble Brook Road Wainui

Drawing Title
Device Details D



Design:	Y. Choi
Drawn:	Y. Choi
Approved:	H. Dubinko
Scale A3:	NTS

Project status:	Consent
Project:	25050
Drawing No:	216
Issue/Rev:	D