

Delmore

VINEWAY LIMITED | TERRA STUDIO

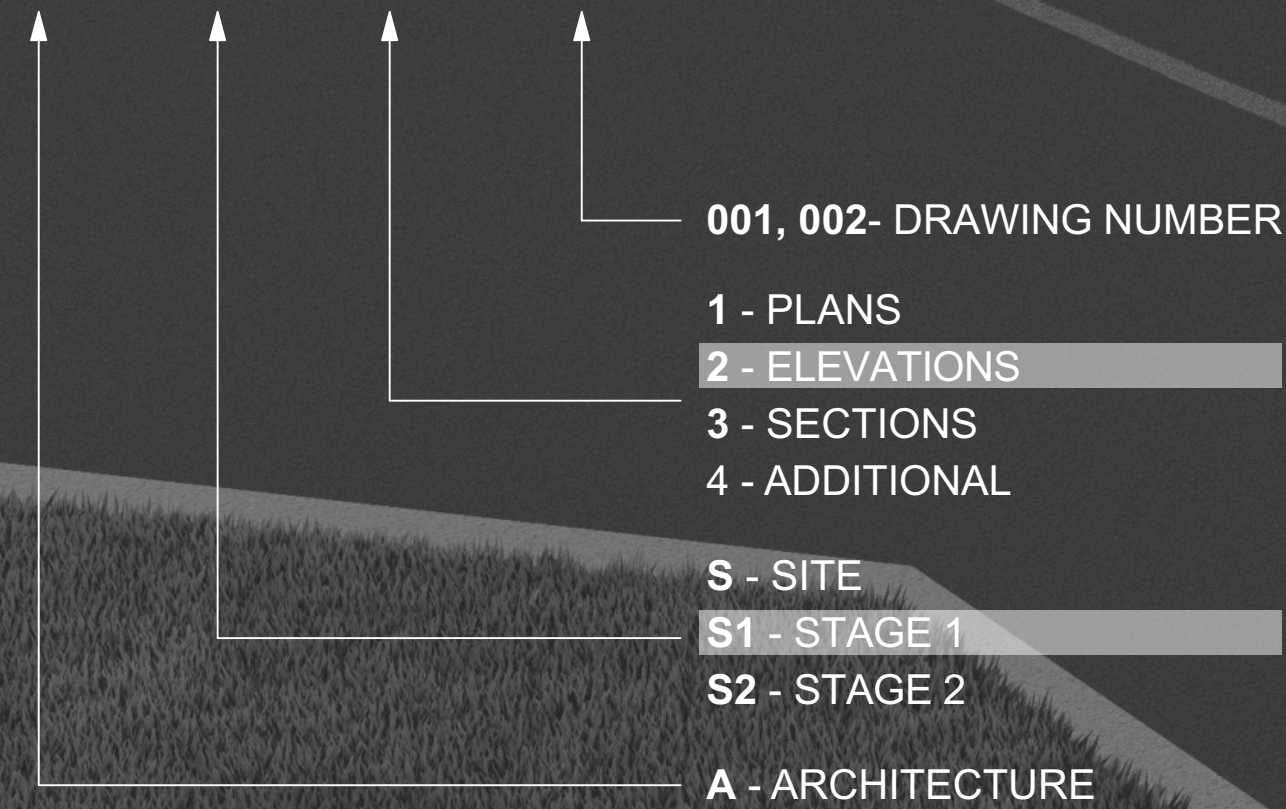
STAGE 1 ELEVATIONS



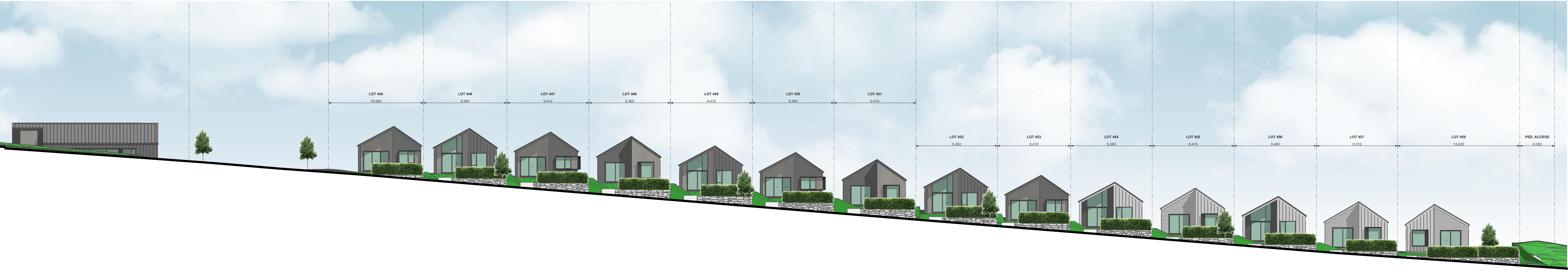
DRAWING REGISTER

STAGE 1 ELEVATIONS

A - S - 1 - 01



| STAGE 1 ELEVATIONS INDEX | | | | | |
|--------------------------|--|--------|-----------|---|--------|
| LAYOUT ID | LAYOUT NAME | REV ID | LAYOUT ID | LAYOUT NAME | REV ID |
| A-S1-2-01 | ELEVATIONS - STAGE 1A-1 / LOTS 18-25 | B | A-S1-2-34 | ELEVATIONS - STAGE 1A-4 / STREAM EDGE | B |
| A-S1-2-02 | ELEVATIONS - STAGE 1A-1 / LOTS 18-25 | B | A-S1-2-35 | ELEVATIONS - STAGE 1A-4 / STREAM EDGE | B |
| A-S1-2-03 | ELEVATIONS - STAGE 1A-1 / LOTS 26-31 | B | A-S1-2-36 | ELEVATIONS - STAGE 1B-1 / LOTS 280-291 | B |
| A-S1-2-04 | ELEVATIONS - STAGE 1A-1 / LOTS 26-31 | B | A-S1-2-37 | ELEVATIONS - STAGE 1B-1 / LOTS 280-291 | B |
| A-S1-2-05 | ELEVATIONS - STAGE 1A-1 / LOTS 32-40 | B | A-S1-2-38 | ELEVATIONS - STAGE 1B-1 / LOTS 280-291 | B |
| A-S1-2-06 | ELEVATIONS - STAGE 1A-1 / LOTS 32-40 | B | A-S1-2-39 | ELEVATIONS - STAGE 1B-1 / LOTS 280-291 | B |
| A-S1-2-07 | ELEVATIONS - STAGE 1A-1 / LOTS 41-55 | B | A-S1-2-40 | ELEVATIONS - STAGE 1B-1 / LOTS 292-300 | B |
| A-S1-2-08 | ELEVATIONS - STAGE 1A-1 / LOTS 41-55 | B | A-S1-2-41 | ELEVATIONS - STAGE 1B-1 / LOTS 292-300 | B |
| A-S1-2-09 | ELEVATIONS - STAGE 1A-1 / LOTS 56-67 | B | A-S1-2-42 | ELEVATIONS - STAGE 1B-1 / LOTS 260-267 | B |
| A-S1-2-10 | ELEVATIONS - STAGE 1A-1 / LOTS 56-67 | B | A-S1-2-43 | ELEVATIONS - STAGE 1B-1 / LOTS 260-267 | B |
| A-S1-2-11 | ELEVATIONS - STAGE 1A-1 / LOTS 67-75 | B | A-S1-2-44 | ELEVATIONS - STAGE 1B-1 / LOTS 268-280 | B |
| A-S1-2-12 | ELEVATIONS - STAGE 1A-1 / LOTS 67-75 | B | A-S1-2-45 | ELEVATIONS - STAGE 1B-1 / LOTS 268-280 | B |
| A-S1-2-13 | ELEVATIONS - STAGE 1A-1 / LOTS 56-66 | B | A-S1-2-46 | ELEVATIONS - STAGE 1B-1 / STREAM EDGE | B |
| A-S1-2-14 | ELEVATIONS - STAGE 1A-1 / LOTS 56-66 | B | A-S1-2-47 | ELEVATIONS - STAGE 1B-2 / LOTS 400-409 | B |
| A-S1-2-15 | ELEVATIONS - STAGE 1A-1 / LOTS 67-75 | B | A-S1-2-48 | ELEVATIONS - STAGE 1B-2 / LOTS 381-400 | B |
| A-S1-2-16 | ELEVATIONS - STAGE 1A-1 / LOTS 67-75 | B | A-S1-2-49 | ELEVATIONS - STAGE 1B-2 / LOTS 381-400 | B |
| A-S1-2-17 | ELEVATIONS - STAGE 1A-1 / ROAD 2 | B | A-S1-2-50 | ELEVATIONS - STAGE 1B-2 / LOTS 371-379 | B |
| A-S1-2-18 | ELEVATIONS - STAGE 1A-1 / LOTS 97-105 | B | A-S1-2-51 | ELEVATIONS - STAGE 1B-2 / LOTS 300-307 | B |
| A-S1-2-19 | ELEVATIONS - STAGE 1A-1 / LOTS 111-119 | B | A-S1-2-52 | ELEVATIONS - STAGE 1B-2 / LOTS 308-328 | B |
| A-S1-2-20 | ELEVATIONS - STAGE 1A-3 / LOTS 143-150 | B | A-S1-2-53 | ELEVATIONS - STAGE 1B-2 / LOTS 308-328 | B |
| A-S1-2-21 | ELEVATIONS - STAGE 1A-3 / LOTS 130-136 | B | A-S1-2-54 | ELEVATIONS - STAGE 1B-2 / LOTS 328-335 | B |
| A-S1-2-22 | ELEVATIONS - STAGE 1A-3 / LOTS 137-142 | B | A-S1-2-55 | ELEVATIONS - STAGE 1B-2 / LOTS 314,320,321 & 3... | B |
| A-S1-2-23 | ELEVATIONS - STAGE 1A-4 / LOTS 183-195 | B | A-S1-2-56 | ELEVATIONS - STAGE 1B-2 / LOTS 337-351 | B |
| A-S1-2-24 | ELEVATIONS - STAGE 1A-4 / LOTS 183-195 | B | A-S1-2-57 | ELEVATIONS - STAGE 1B-2 / LOTS 337-351 | B |
| A-S1-2-25 | ELEVATIONS - STAGE 1A-4 / LOTS 196-203 | B | A-S1-2-58 | ELEVATIONS - STAGE 1B-2 / LOTS 353-360 | B |
| A-S1-2-26 | ELEVATIONS - STAGE 1A-4 / LOTS 210-224 | B | A-S1-2-59 | ELEVATIONS - STAGE 1B-2 / LOTS 353-360 | B |
| A-S1-2-27 | ELEVATIONS - STAGE 1A-4 / LOTS 210-224 | B | A-S1-2-60 | ELEVATIONS - STAGE 1B-2 / STREAM EDGE ROAD | B |
| A-S1-2-28 | ELEVATIONS - STAGE 1A-4 / LOTS 227-232 | B | A-S1-2-61 | ELEVATIONS - STAGE 1B-2 / STREAM EDGE | B |
| A-S1-2-29 | ELEVATIONS - STAGE 1A-4 / LOTS 229-242 | B | A-S1-2-62 | ELEVATIONS - STAGE 1B-2 / STREAM EDGE | B |
| A-S1-2-30 | ELEVATIONS - STAGE 1A-4 / LOTS 229-242 | B | A-S1-2-63 | ELEVATIONS - STAGE 1B-3 / LOTS 445-458 | B |
| A-S1-2-31 | ELEVATIONS - STAGE 1A-4 / LOTS 243-249 | B | A-S1-2-64 | ELEVATIONS - STAGE 1B-3 / LOTS 444-445 | B |
| A-S1-2-32 | ELEVATIONS - STAGE 1A-4 / STREAM EDGE | B | A-S1-2-65 | ELEVATIONS - STAGE 1B-3 / LOTS 444-460 | B |
| A-S1-2-33 | ELEVATIONS - STAGE 1A-4 / STREAM EDGE | B | A-S1-2-66 | ELEVATIONS - STAGE 1B-3 / LOTS 420-433 | B |
| | | | A-S1-2-67 | ELEVATIONS - STAGE 1B-3 / STREAM EDGE | B |



1

ELEVATION - STAGE 1B-3 - LOTS 445-458

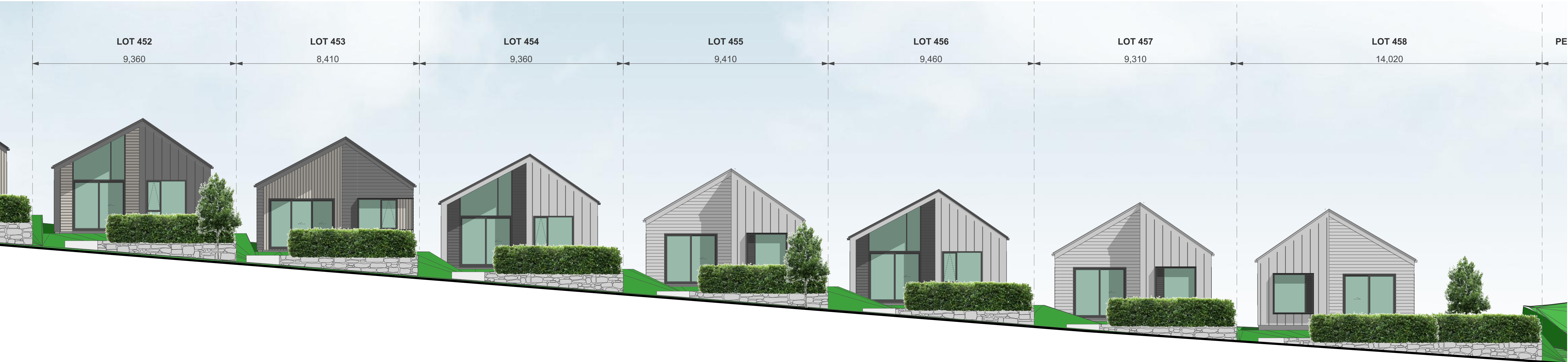
1:250



2

ELEVATION - STAGE 1B-3 - LOTS 445-458

1:100



4

ELEVATION - STAGE 1B-3 - LOTS 445-458

1:100

TERRA STUDIO

PROJECT KEY

NOTES

LOT BOUNDARIES AND DIMENSIONS SHOWN ARE APPROXIMATE ONLY - ELEVATION PLANES DO NOT RUN PARALLEL TO ROAD FRONTAGES IN ALL CASES. FOR SPECIFIC INFORMATION, REFER TO THE CIVIL ENGINEER'S SCHEME PLANS.

BOTH PRIVATE AND PUBLIC LANDSCAPE FEATURES SHOWN ARE INDICATIVE ONLY - FOR DETAILED DESIGN REFER TO THE LANDSCAPE ARCHITECT'S DRAWINGS.

3D MODEL TRIANGULATION MAY BE VISIBLE IN SOME AREAS - REFER TO THE CIVIL CONTOUR PLANS FOR CLARITY.

IN THE CASE OF ANY DISCREPANCIES BETWEEN THE ELEVATIONS SHOWN ON THIS SHEET AND THOSE REFERENCED IN THE TYPOLOGY PLAN BOOK, THE LATTER SHALL TAKE PRECEDENCE.

IN THE CASE OF ANY DISCREPANCIES BETWEEN THE LOT NUMBERS SHOWN ON THIS SHEET AND THOSE REFERENCED IN THE CIVIL ENGINEER'S SCHEME PLANS, THE LATTER SHALL TAKE PRECEDENCE.

| | |
|---------------|--|
| CLIENT | VINEWAY LIMITED |
| PROJECT NAME | DELMORE - STAGE 1 |
| DRAWING TITLE | ELEVATIONS - STAGE 1B-3 / LOTS 445-458 |
| SCALE | 1:15000 |
| REVISION NO. | B |
| DRAWING NO. | A-S1-2-63 |



2

TERRA STUDIO

PROJECT KEY

NOTES

LOT BOUNDARIES AND DIMENSIONS SHOWN ARE APPROXIMATE ONLY - ELEVATION PLANES DO NOT RUN PARALLEL TO ROAD FRONTAGES IN ALL CASES. FOR SPECIFIC INFORMATION, REFER TO THE CIVIL ENGINEER'S SCHEME PLANS.

BOTH PRIVATE AND PUBLIC LANDSCAPE FEATURES SHOWN ARE INDICATIVE ONLY - FOR DETAILED DESIGN REFER TO THE LANDSCAPE ARCHITECT'S DRAWINGS.

3D MODEL TRIANGULATION MAY BE VISIBLE IN SOME AREAS - REFER TO THE CIVIL CONTOUR PLANS FOR CLARITY.

IN THE CASE OF ANY DISCREPANCIES BETWEEN THE ELEVATIONS SHOWN ON THIS SHEET AND THOSE REFERENCED IN THE TYPOLOGY PLAN BOOK, THE LATTER SHALL TAKE PRECEDENCE.

IN THE CASE OF ANY DISCREPANCIES BETWEEN THE LOT NUMBERS SHOWN ON THIS SHEET AND THOSE REFERENCED IN THE CIVIL ENGINEER'S SCHEME PLANS, THE LATTER SHALL TAKE PRECEDENCE.



3



4

| | |
|---------------|--|
| CLIENT | VINEWAY LIMITED |
| PROJECT NAME | DELMORE - STAGE 1 |
| DRAWING TITLE | ELEVATIONS - STAGE 1B-3 / LOTS 444-445 |
| SCALE | 1:15000 |
| REVISION NO. | B |
| DRAWING NO. | A-S1-2-64 |



4

ELEVATION - STAGE 1B-3 - LOTS 444-460

1:250

TERRA STUDIO



2

ELEVATION - STAGE 1B-3 - LOTS 444-460

1:100

NOTES

LOT BOUNDARIES AND DIMENSIONS SHOWN ARE APPROXIMATE ONLY - ELEVATION PLANES DO NOT RUN PARALLEL TO ROAD FRONTAGES IN ALL CASES. FOR SPECIFIC INFORMATION, REFER TO THE CIVIL ENGINEER'S SCHEME PLANS.

BOTH PRIVATE AND PUBLIC LANDSCAPE FEATURES SHOWN ARE INDICATIVE ONLY - FOR DETAILED DESIGN REFER TO THE LANDSCAPE ARCHITECT'S DRAWINGS.

3D MODEL TRIANGULATION MAY BE VISIBLE IN SOME AREAS - REFER TO THE CIVIL CONTOUR PLANS FOR CLARITY.

IN THE CASE OF ANY DISCREPANCIES BETWEEN THE ELEVATIONS SHOWN ON THIS SHEET AND THOSE REFERENCED IN THE TYPOLOGY PLAN BOOK, THE LATTER SHALL TAKE PRECEDENCE.

IN THE CASE OF ANY DISCREPANCIES BETWEEN THE LOT NUMBERS SHOWN ON THIS SHEET AND THOSE REFERENCED IN THE CIVIL ENGINEER'S SCHEME PLANS, THE LATTER SHALL TAKE PRECEDENCE.

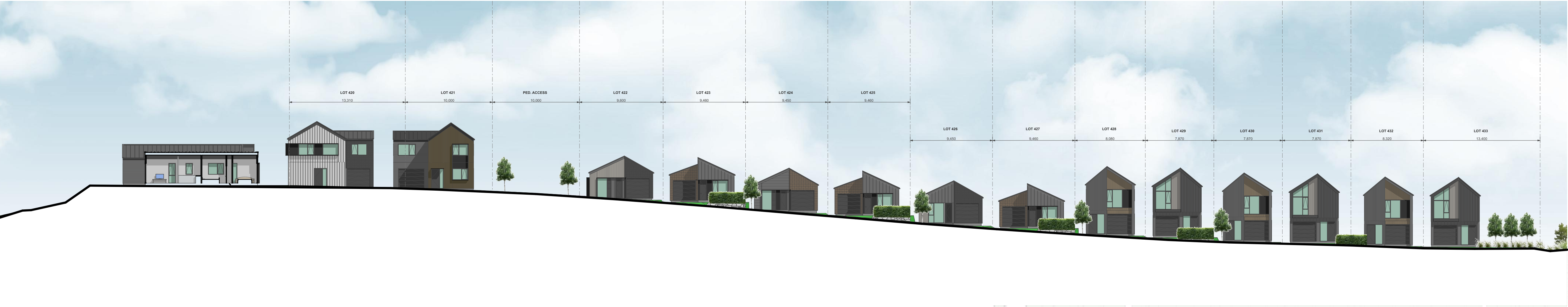


3

ELEVATION - STAGE 1B-3 - LOTS 444-460

1:100

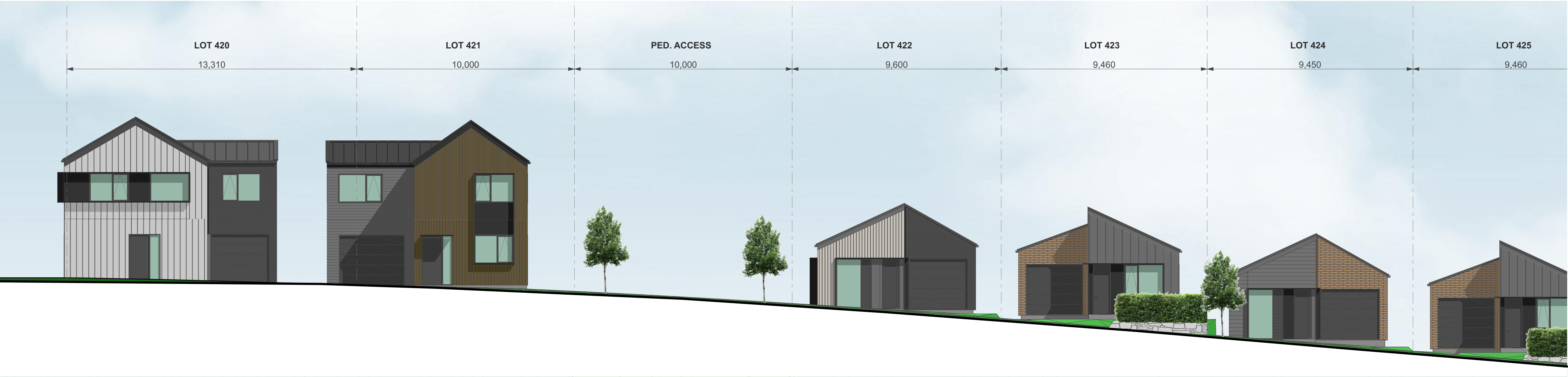
| | |
|---------------|--|
| CLIENT | VINEWAY LIMITED |
| PROJECT NAME | DELMORE - STAGE 1 |
| DRAWING TITLE | ELEVATIONS - STAGE 1B-3 / LOTS 444-460 |
| SCALE | 1:15000 |
| REVISION NO. | B |
| DRAWING NO. | A-S1-2-65 |



2

ELEVATION - STAGE 1B-3 - LOTS 420-433

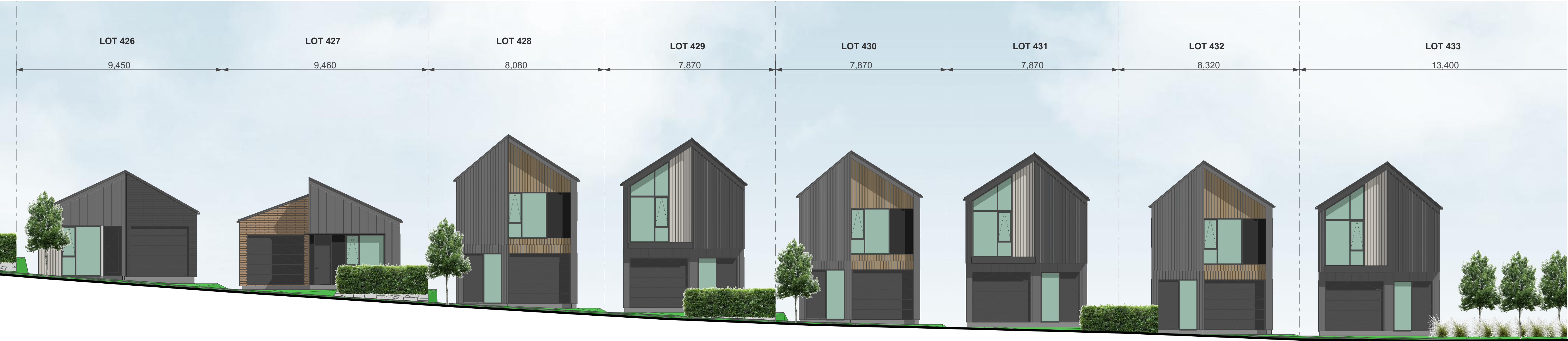
1:250



3

ELEVATION - STAGE 1B-3 - LOTS 420-433

1:100



4

ELEVATION - STAGE 1B-3 - LOTS 420-433

1:100

TERRA STUDIO

PROJECT KEY

NOTES

LOT BOUNDARIES AND DIMENSIONS SHOWN ARE APPROXIMATE ONLY - ELEVATION PLANES DO NOT RUN PARALLEL TO ROAD FRONTAGES IN ALL CASES. FOR SPECIFIC INFORMATION, REFER TO THE CIVIL ENGINEER'S SCHEME PLANS.

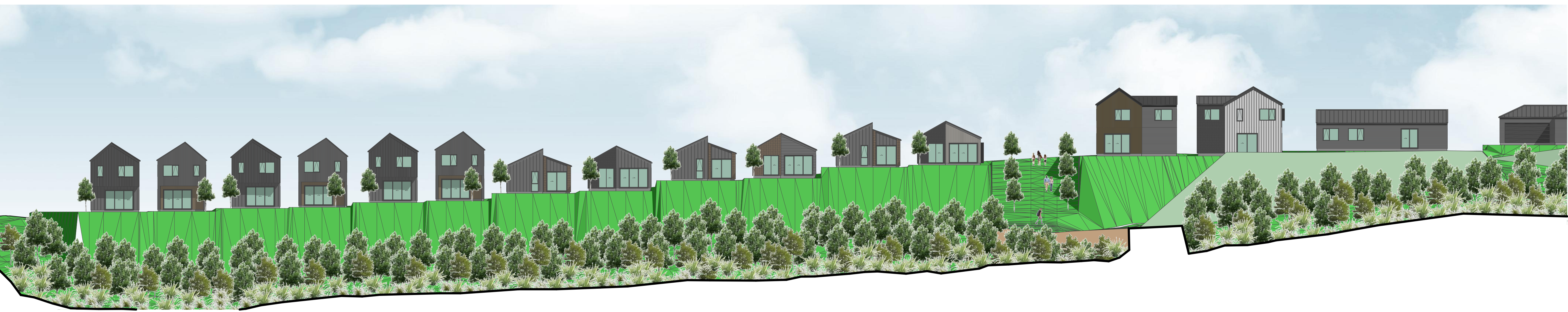
BOTH PRIVATE AND PUBLIC LANDSCAPE FEATURES SHOWN ARE INDICATIVE ONLY - FOR DETAILED DESIGN REFER TO THE LANDSCAPE ARCHITECT'S DRAWINGS.

3D MODEL TRIANGULATION MAY BE VISIBLE IN SOME AREAS - REFER TO THE CIVIL CONTOUR PLANS FOR CLARITY.

IN THE CASE OF ANY DISCREPANCIES BETWEEN THE ELEVATIONS SHOWN ON THIS SHEET AND THOSE REFERENCED IN THE TYPOLOGY PLAN BOOK, THE LATTER SHALL TAKE PRECEDENCE.

IN THE CASE OF ANY DISCREPANCIES BETWEEN THE LOT NUMBERS SHOWN ON THIS SHEET AND THOSE REFERENCED IN THE CIVIL ENGINEER'S SCHEME PLANS, THE LATTER SHALL TAKE PRECEDENCE.

| | |
|---------------|--|
| CLIENT | VINEWAY LIMITED |
| PROJECT NAME | DELMORE - STAGE 1 |
| DRAWING TITLE | ELEVATIONS - STAGE 1B-3 / LOTS 420-433 |
| SCALE | 1:15000 |
| REVISION NO. | B |
| DRAWING NO. | A-S1-2-66 |

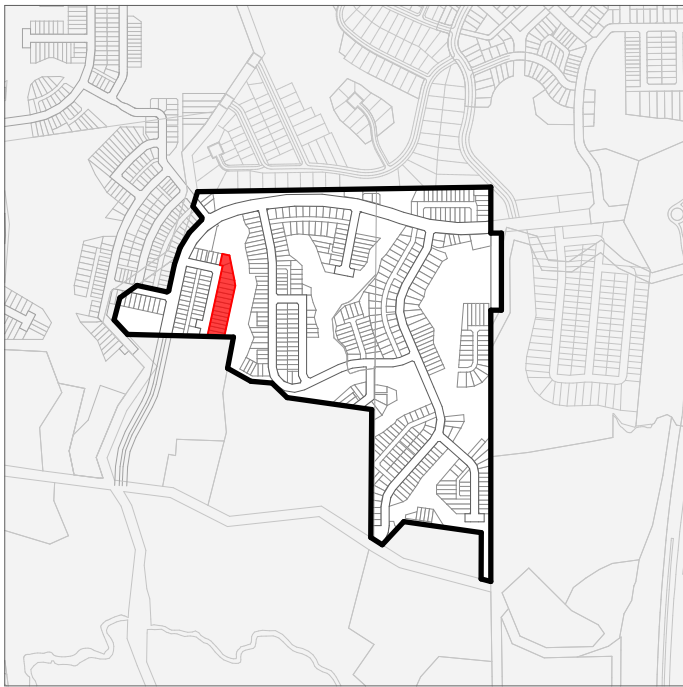
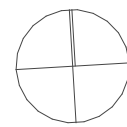


4

ELEVATION - STAGE 1B-3 - STREAM EDGE

1:250

TERRA STUDIO



PROJECT KEY

NOTES

LOT BOUNDARIES AND DIMENSIONS SHOWN ARE APPROXIMATE ONLY - ELEVATION PLANES DO NOT RUN PARALLEL TO ROAD FRONTAGES IN ALL CASES. FOR SPECIFIC INFORMATION, REFER TO THE CIVIL ENGINEER'S SCHEME PLANS.

BOTH PRIVATE AND PUBLIC LANDSCAPE FEATURES SHOWN ARE INDICATIVE ONLY - FOR DETAILED DESIGN REFER TO THE LANDSCAPE ARCHITECT'S DRAWINGS.

3D MODEL TRIANGULATION MAY BE VISIBLE IN SOME AREAS - REFER TO THE CIVIL CONTOUR PLANS FOR CLARITY.

IN THE CASE OF ANY DISCREPANCIES BETWEEN THE ELEVATIONS SHOWN ON THIS SHEET AND THOSE REFERENCED IN THE TYPOLOGY PLAN BOOK, THE LATTER SHALL TAKE PRECEDENCE.

IN THE CASE OF ANY DISCREPANCIES BETWEEN THE LOT NUMBERS SHOWN ON THIS SHEET AND THOSE REFERENCED IN THE CIVIL ENGINEER'S SCHEME PLANS, THE LATTER SHALL TAKE PRECEDENCE.



2

ELEVATION - STAGE 1B-3 - STREAM EDGE

1:100



3

ELEVATION - STAGE 1B-3 - STREAM EDGE

1:100

| | |
|---------------|---------------------------------------|
| CLIENT | VINEWAY LIMITED |
| PROJECT NAME | DELMORE - STAGE 1 |
| DRAWING TITLE | ELEVATIONS - STAGE 1B-3 / STREAM EDGE |
| SCALE | 1:15000 |
| REVISION NO. | B |

DRAWING NO.

A-S1-2-67