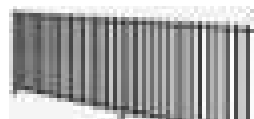


FENCE TREATMENT - AREA A



- Main gates and supporting boundaries to be stone faces with supporting hedges and 300 x 300mm intermittent posts.



- 1200mm high boundary fence and top of planted embankments to be Boundaryline 'Durapanel Axis' or similar.



- 1800mm high Boundaryline 'Sentry Panel' to contain Dementia Garden.



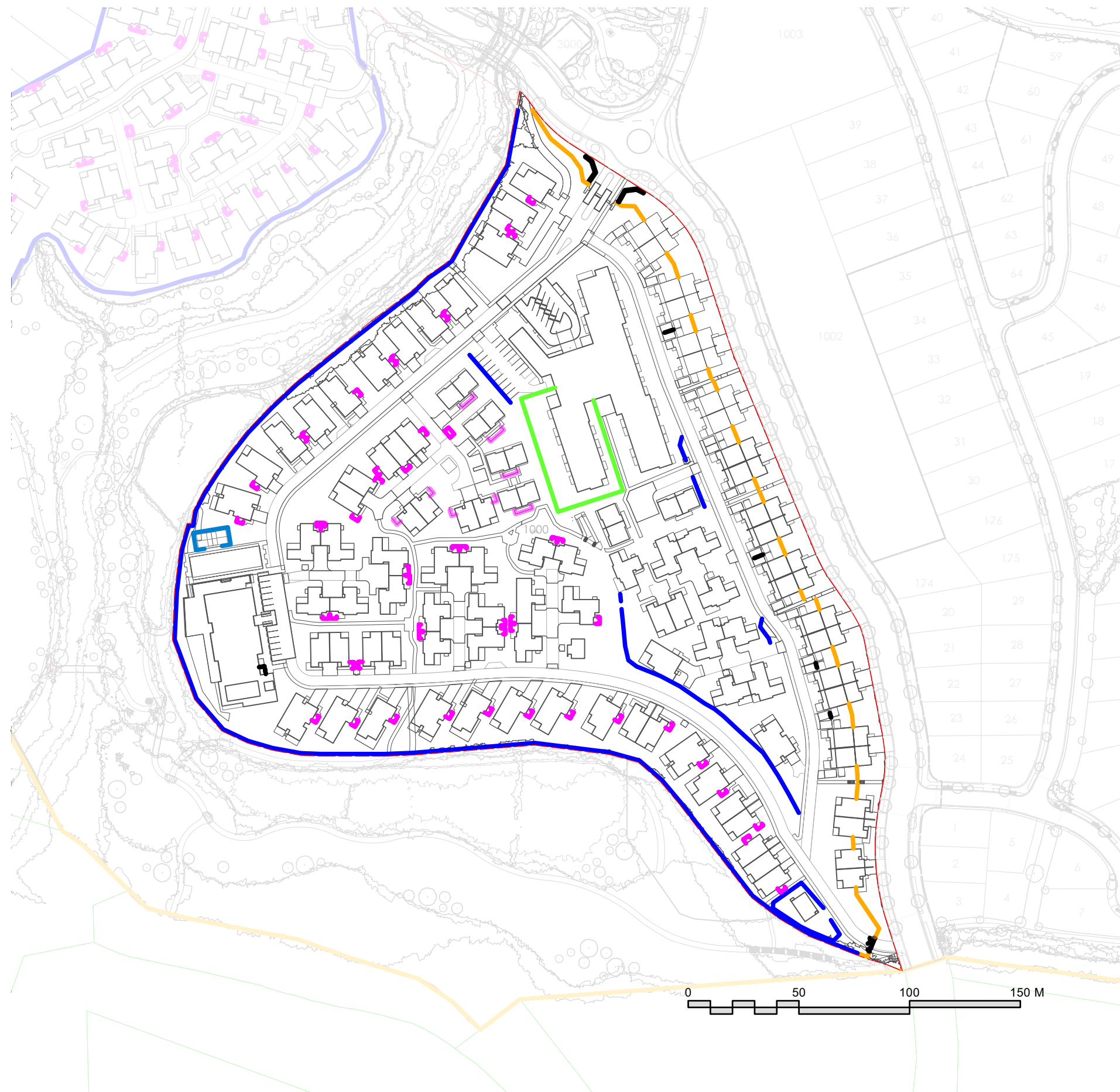
- 1200mm high Boundaryline 'PicketPanel Atlas' to top of retaining walls of Ruru Units



- 1800mm high Boundaryline 'PicketPanel Atlas' to screen bin enclosures.



- 2000mm high tennis court fence.

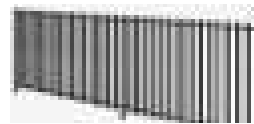


4 DESIGN PROPOSAL
- LANDSCAPE STRATEGY

FENCE TREATMENT - AREA B



○ Main gates and supporting boundaries to be stone faces with supporting hedges and 300 x 300mm intermittent posts.



○ 1200mm high boundary fence and top of planted embankments to be Boundaryline 'Durapanel Axis' or similar.



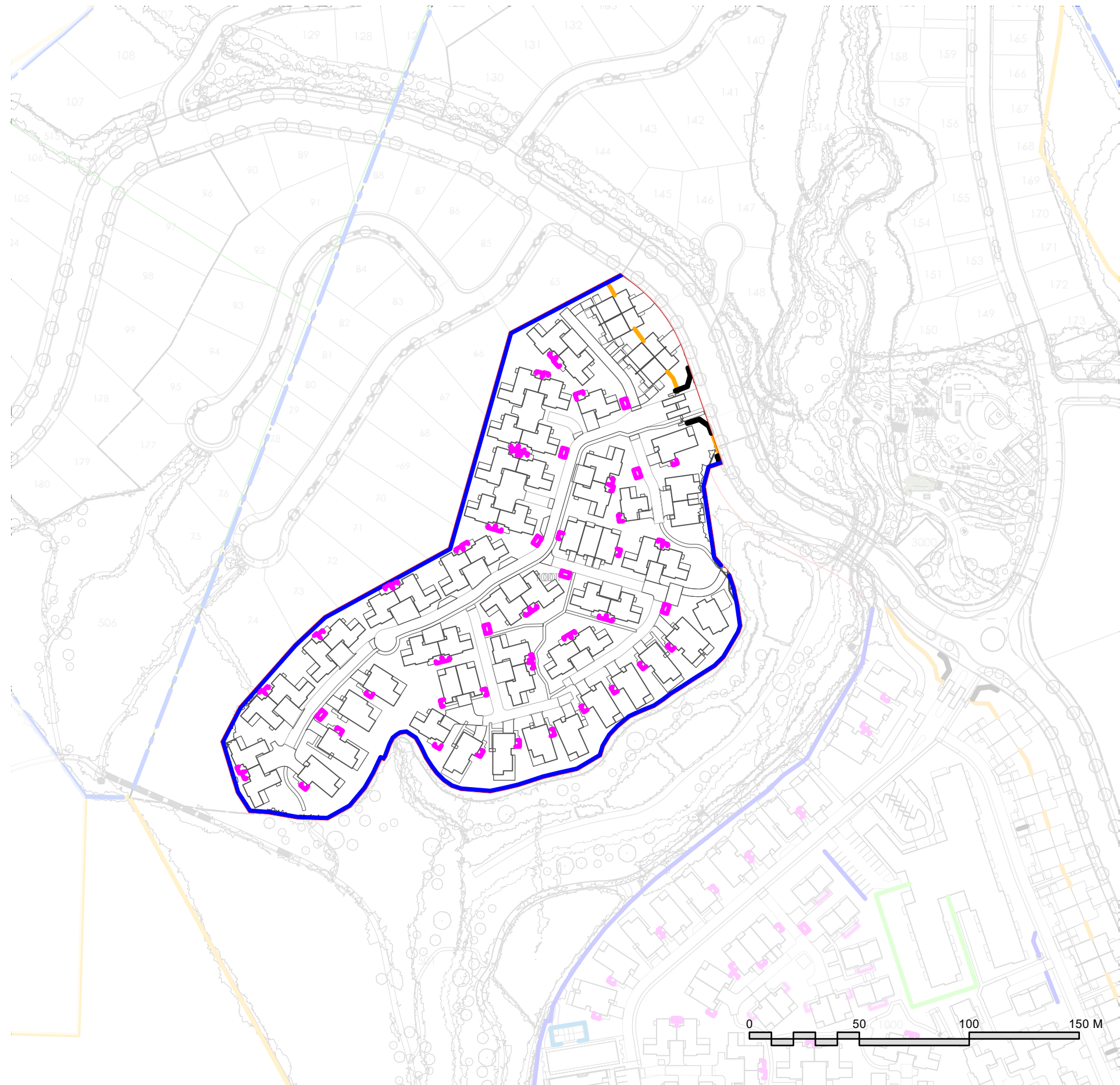
○ 1800mm high Boundaryline 'Sentry Panel' to contain Dementia Garden.



○ 1200mm high Boundaryline 'PicketPanel Atlas' to top of retaining walls of Ruru Units



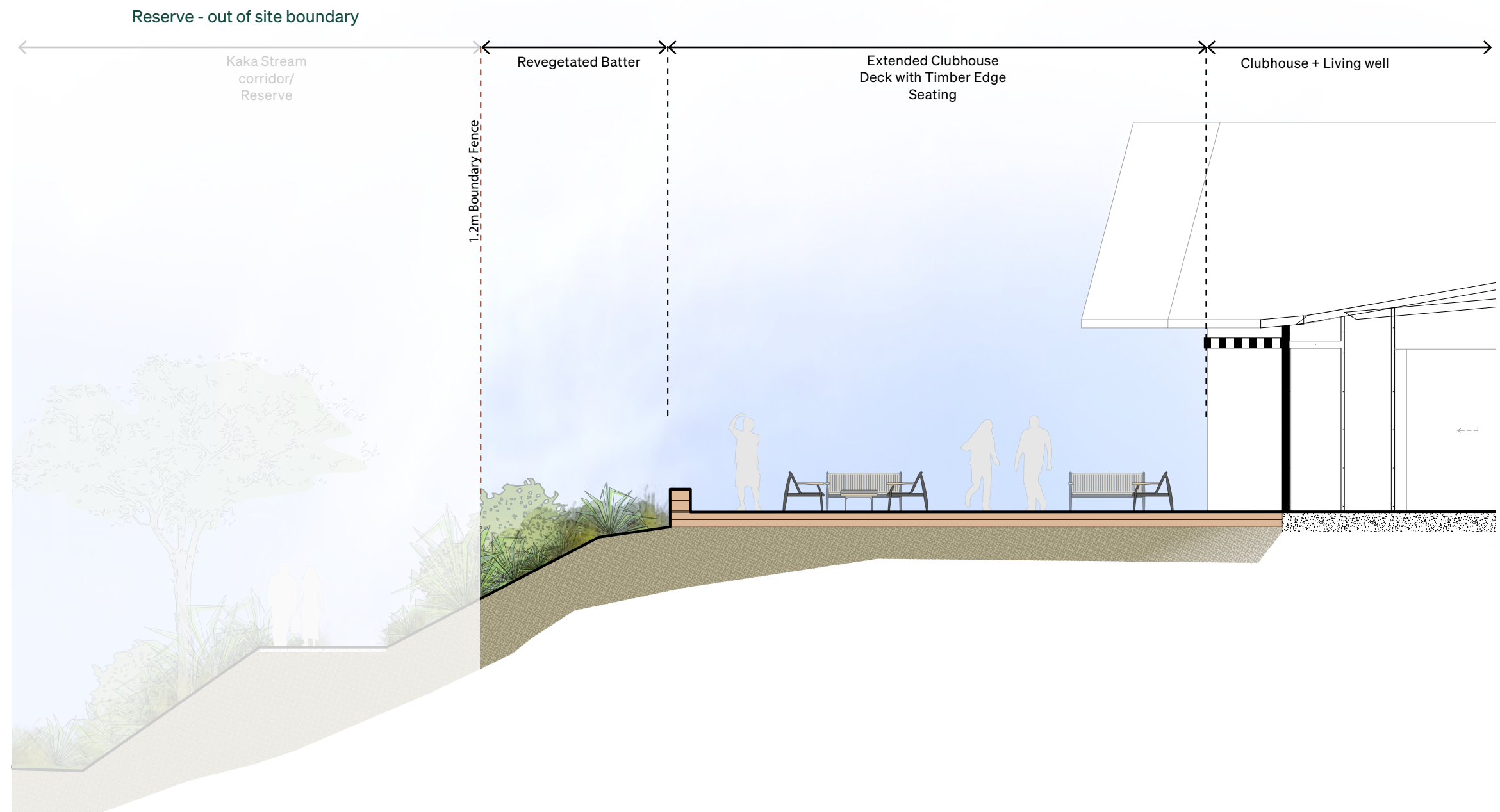
○ 1800mm high Boundaryline 'PicketPanel Atlas' to screen bin enclosures.



SITE SECTIONS



SECTION DD : 1000 @ A3

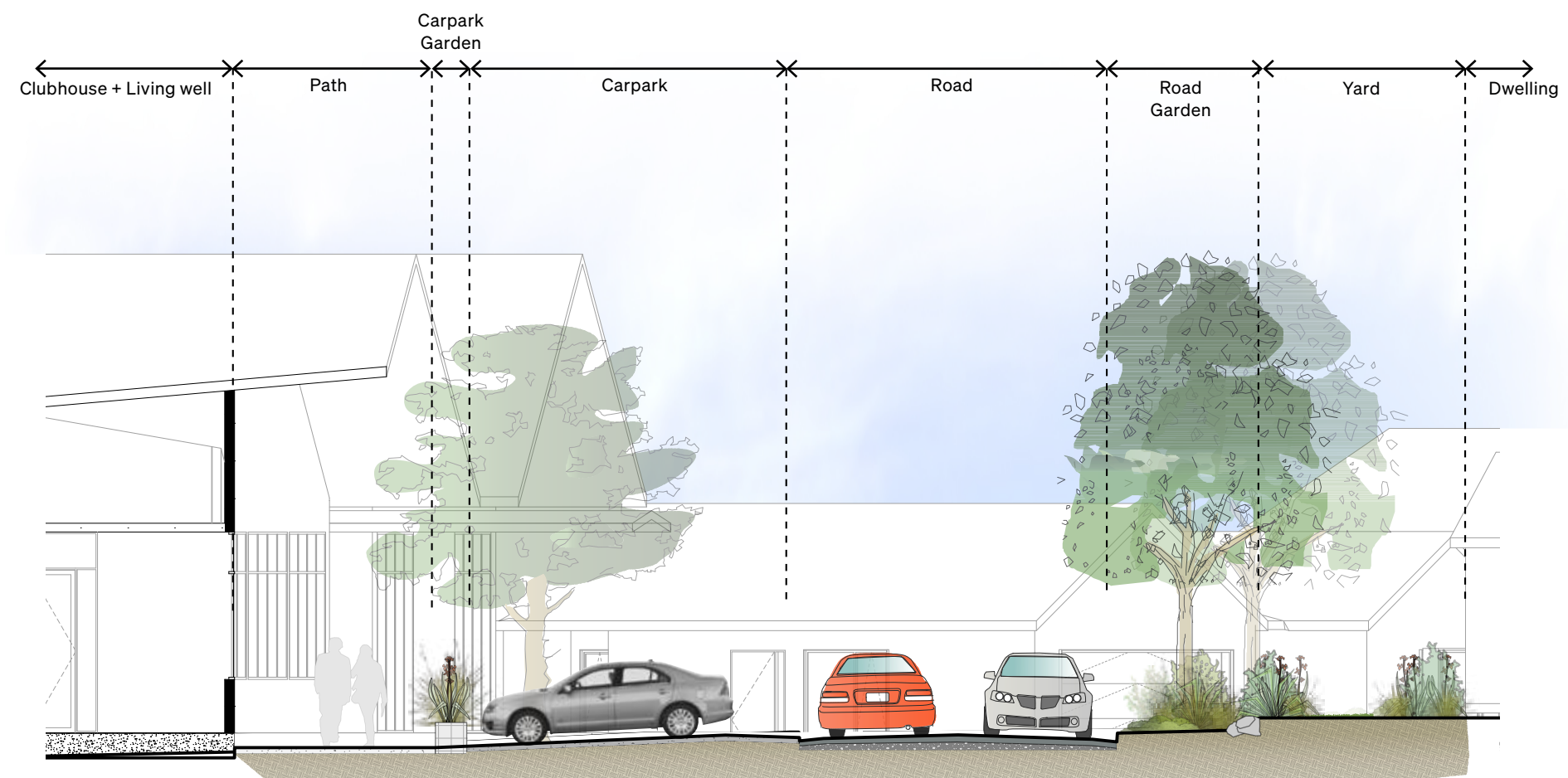


SECTION DD-1_1:100 @ A3

SITE SECTIONS



SECTION DD : 1000 @ A3

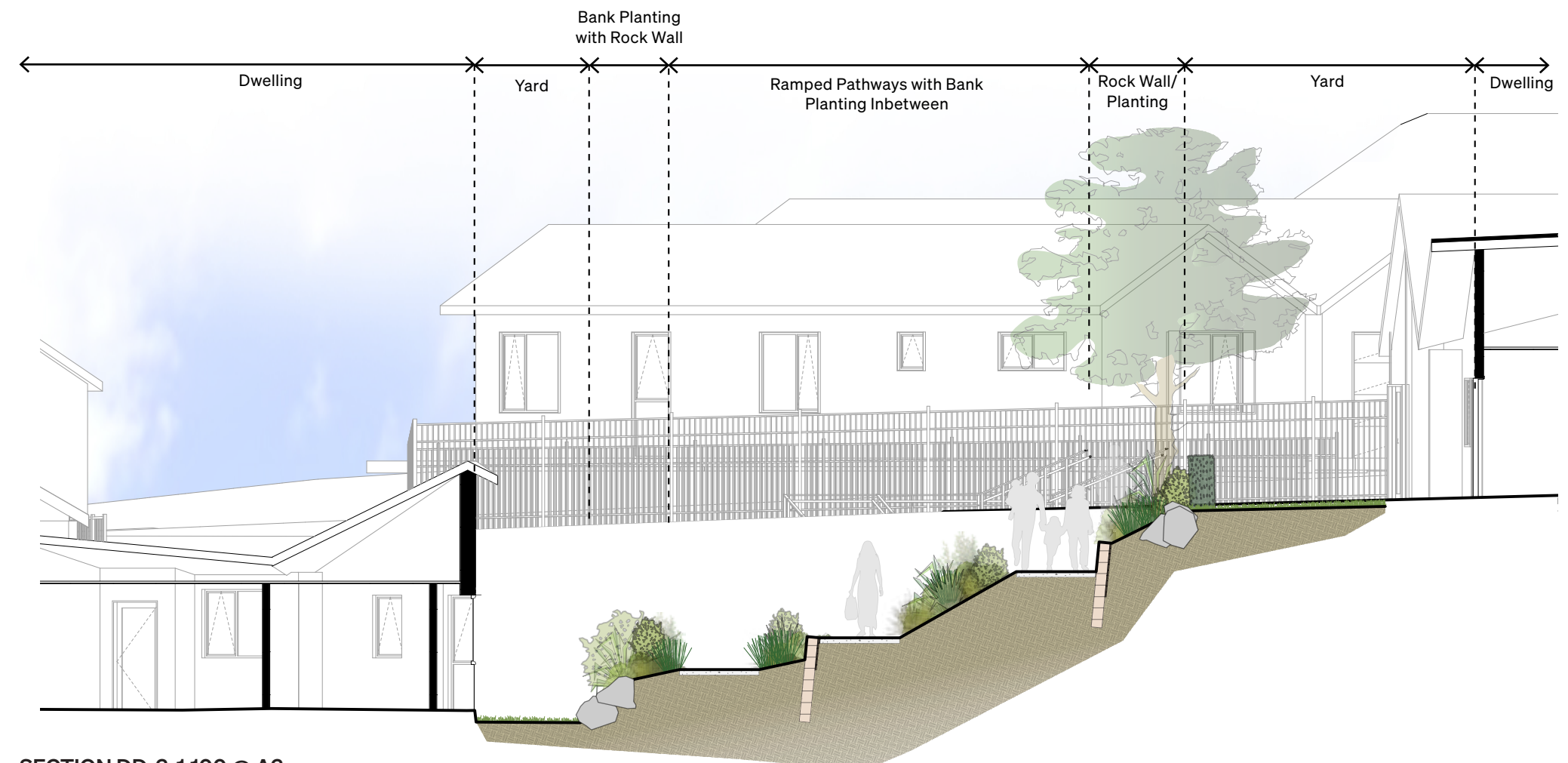


SECTION DD-2_1:100 @ A3

SITE SECTIONS



SECTION DD : 1000 @ A3

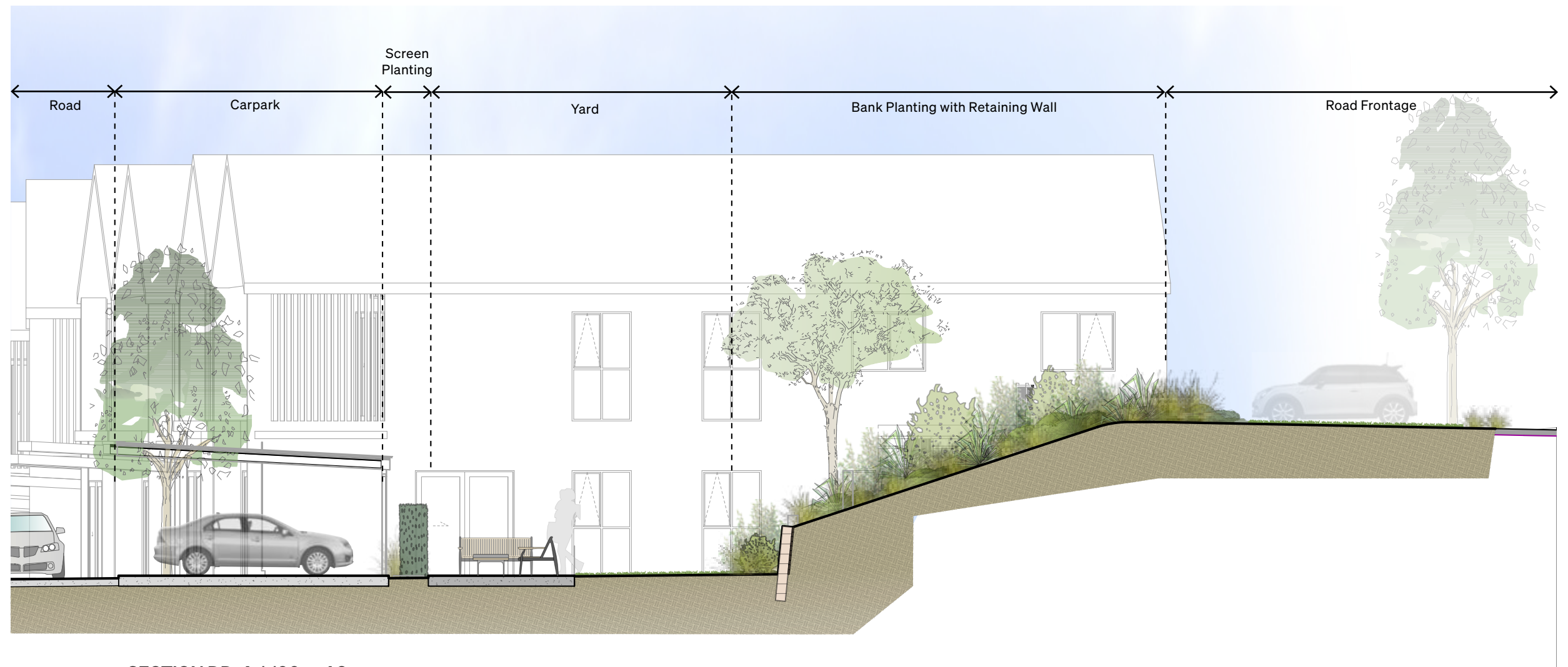


SECTION DD-3_1:100 @ A3

SITE SECTIONS



SECTION DD : 1000 @ A3



LIGHTING STRATEGY - AREA A



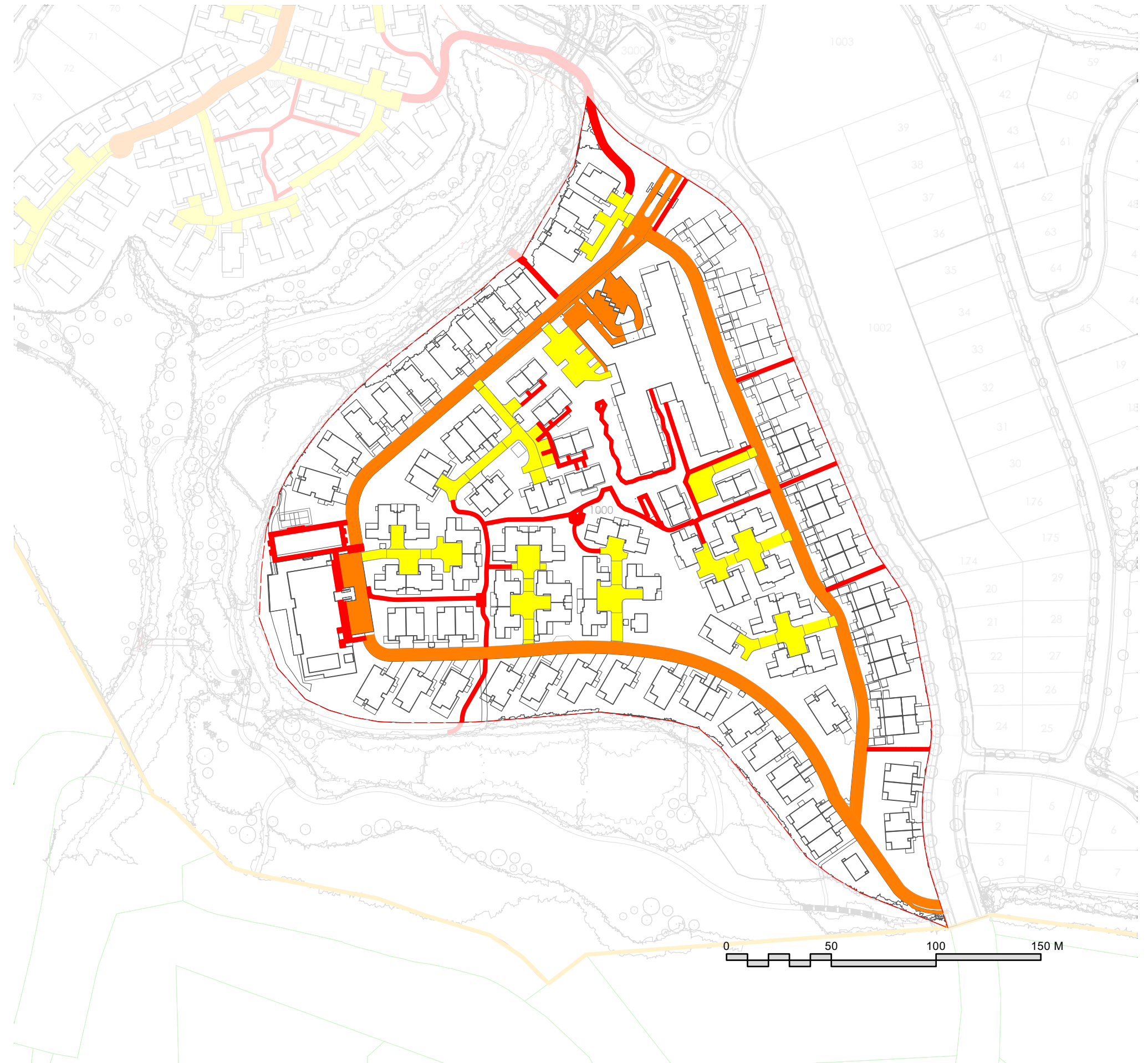
Main village road lighting using 4.5m high lighting standards.



Carpark and cluster precinct lighting to be downward facing bollard lighting up to 1.5m in height.



Pedestrian paths to be lit using low level type lighting 0.5 - 0.8m in height.



4 DESIGN PROPOSAL
- LANDSCAPE STRATEGY

LIGHTING STRATEGY - AREA B



Main village road lighting using 4.5m high lighting standards.



Carpark and cluster precinct lighting to be downward facing bollard lighting up to 1.5m in height.



Pedestrian paths to be lit using low level type lighting 0.5 - 0.8m in height.

