

188 Beaumont Street

Landscape Architecture - Podium & Tower Entrance Fast Track Approval Appendix I Drawings

Prepared for:
Westhaven Residential Limited Partnership

Document Revision Status: A

March 2026

188 BEAUMONT STREET



WM WARREN AND MAHONEY®

Project

188 BEAUMONT STREET

WYNYARD QUARTER

LANDSCAPE DRAWING SET

Client

WESTHAVEN RESIDENTIAL
LIMITED PARTNERSHIP

Issue Status & No

RESOURCE CONSENT

Consultants

AECOM
Project Manager
ROBERT BIRD GROUP
Structural Engineer
NDY
Mechanical Engineer
JENSEN HUGHES
Fire Engineer
NDY
Electrical Engineer

**Warren and Mahoney Architects
New Zealand Ltd**

Ground Floor, Mason Bros.
139 Pakenham Street West
Wynyard Quarter
Auckland 1010
New Zealand
Phone + 64 9 309 4894

Registered Architects and Designers
www.warrenandmahoney.com

All dimension to be verified on site before producing
shop drawings or commencing any work.
Do not scale. The copyright of this drawing remains
with Warren and Mahoney Architects New Zealand Ltd.

SU - SURFACES

SU-001 GRANITE PAVING
300 x 100 x 50mm granite paver's laid stretcher bond pattern with feathered edges over Nuragrind system over pedestal with fixing tab and self levelling head. Paving to be 80% G648A, 10% G623 and 10% Red porphyry. Finish to be bush hammered.

SU-002 STONE MULCH
150mm deep locally sourced rounded and washed river stone mulch grade 23-40mm free from fines laid over non-woven geotextile weed mat over hand compacted sub base. Colour mix of white, grey buff and red tones.

SU-003 TIMBER DECKING - PRIVATE
90 x 21mm Vitex hardwood decking watershed profile board nom. 2mm joints, planks fixed to aluminium or timber bearer, joist framing system with 316L stainless steel screws.

SU-004 TIMBER DECKING - POOL
140 x 42mm Vitex hardwood decking watershed profile with factory routed anti slip inserts to ramp, nom 2mm joints, boards fixed to aluminium or timber bearer, joist and post framing system with 316L stainless steel screws.

SU-008 LEISURE POOL
1200 -1400mm deep pool. 25 x 25 x 6.5mm Plural non slip mosaic tile finish by Agrob-Buchtal fix to pool concrete structure to pool specialist specifications. Allow for tile corner units. All waterproofing, sealants, fittings to pool specialist details and specifications. Pool structure and services by others.

SU-009 SPA POOL
800 -1000mm bespoke swim in pool spa. 25 x 25 x 6.5mm Plural non slip mosaic tile finish by Agrob-Buchtal fix to pool concrete structure to pool specialist specifications. Allow for tile corner units. All waterproofing, sealants, fittings to pool specialist details and specifications. Pool structure and services by others.

SU-010 BALLAST ROOF
150mm depth stone / pebble aggregate ballast. Nom. 75 to 100mm min dia over non. 30-50mm drainage mat with geotextile fabric. Aggregate to meet minimum weight requirements advised by wind engineer.

SU-015 TGSI WARNING STUDS
TGSI warning indicators individual 35mm wide x 5mm high stainless steel hazard tactile warning stud with black carbandum centre by Freedom Works - drill and plug type installation in accordance with manufacturers methodology and NZS1428.4.1 :2009.6

WT - WALLS

WT-001 GRC CLAD WALL
Nom 50mm thick GRC textured cladding panels fixed to insitu concrete or blockwork retaining wall. Cladding fixed using concealed stainless steel anchors, Allow for drainage layer and waterproofing to rear face of retaining walls..

WT-002 STEEL CLAD WALL
Insitu concrete or blockwork retaining wall (Max height from FFL 900mm) with 3mm steel cladding panels to exposed face. Fixed with domed head stainless steel anchors and insulating washers. Panels to be galvanised and powdercoated white / light grey / mid grey. Allow for drainage layer and waterproofing to rear face of retaining walls.

WT-004 BALCONY PRIVACY WALLS
1800mm high privacy screening wall with 200 x 100mm vitex hardwood timber battens fixed vertically on brick backing wall with concealed brackets or rails.

WT-005 SOUTHERN BOUNDARY WALL
3000mm high boundary treatment wall clad with various width vitex hardwood timber battens and steel mesh / grid. Mesh / grid type to be coordinated with venting fixed vertically on concrete backing wall with concealed bracket or rails.

WT-008 POOL WALL - TILE
25 x 25 x 6.5mm Plural non slip mosaic tile finish by Agrob-Buchtal fix to pool concrete structure to pool specialist specifications

BS - BALUSTRADE SYSTEMS

BS-001 POOL BALUSTRADE
Panorama Frameless Glass Pool Fence by Unex with side-mounted aluminium channel system. Recessed 12–15mm toughened safety glass panels with concealed fixings with Sentryglas interlayer for rail-free finish. System engineered for NZ pool fencing compliance.

BS-006 HANDRAIL
50 x 25mm RHS brushed stainless steel handrail attached to brushed stainless steel stanchion and posts. Base fixing TBC.

FU - FURNITURE

FU-001 GRC PLANTER
GRC planter at varying lengths to the bottom of the balcony privacy walls to be infilled with min 400mm of growing medium, geotextiles and drainage layer. Planters to sit above pedestal supports with drainage outlet to podium.

FU-002 TIMBER SEAT - PRIVATE
140 x 40mm hardwood timber battens to the horizontal face and 40 x 40mm timber battens to the vertical face fixed to steel frame. Frame to be galvanised and painted and fixed to decking in front of retaining wall.

SR - STRUCTURES

SR-001 TIDAL ENTRANCE WATER FEATURE
Shallow reflective pool with cascading back and front edges. Nom. 30mm stone cladding over concrete structure, honed finish with stepped and textured finish to front edge to aerate water. 10mm blackened steel cladding to sides. Water feature plant and mechanical to specialist design, waterproofing by others.

DT - DRAINAGE

DT-001 GREEN WALL CATCH TRAY
Nom. 500mm wide grated stainless steel drainage channel / catch tray to base of green wall. Connect to stormwater or holding tank for recirculation. Powdercoat finish to match green wall frame system.

DT-002 WATER FEATURE CHANNEL DRAIN
Nom. 300mm wide grated stainless steel drainage channel / catch tray to cascading edges of water feature. Connected to water feature plant.

PL - PLANTING

PL-001 GROUNDCOVER PLANTING
Typically 2.5L Grade ground covers and low shrubs. Allow 300mm depth of growing media and 75mm stone mulch.

PL-002 UNDERSTOREY PLANTING
Typically 2.5L grade ground covers and low shrubs, 5L medium and tall shrubs / ferns. Allow 500mm depth of growing media and 75mm mulch.

PL-003 SOUTHERN BOUNDARY PLANTING
Typically 2.5L grade ground covers and low shrubs, 5L medium and tall shrubs / ferns. Allow 900mm depth of growing media and 75mm mulch.

PL-004 FORESHORE PLANTING
Typically 2.5L grade ground covers and low shrubs, 5L medium and tall shrubs / ferns. Allow 500mm depth of growing media and 75mm mulch.

PL-005 CLIMBERS
Min 400mm depth of growing media with 75mm mulch to provide sufficient media for climbers to the base of the privacy walls.

PL-011 GREEN WALL
Green wall to exterior of building facade. Modular vertical garden solution with lightweight aluminium frame system with proprietary felt pocket preplanted greenwall panels. Irrigation to be intergrated into the system.

TR - TREES

TR-001 SPECIMAN TREES - 80L
Trees to be planted in planted slope build up from podium with a min depth of 900mm and min soil volume of 4m3 per tree. All trees to be anchored with stainless steel wires and eyebolts. Each tree to include 2No; 60mm aeration / watering tubes per tree with SS grate. Growing media to be Living Earth Podium mix. Rootballs to be supported by Staracells or structural cells infilled with growing media as required.

TR-002 SPECIMAN TREES - 160L
Trees to be planted in planted slope build up from podium with a min depth of 900mm and min soil volume of 4m3 per tree. All trees to be anchored with stainless steel wires and eyebolts. Each tree to include 2No; 60mm aeration / watering tubes per tree with SS grate. Growing media to be Living Earth Podium mix. Rootballs to be supported by Staracells or structural cells infilled with growing media as required.

TR-003 SPECIMAN TREES - 400L
Trees to be planted in planted slope build up from podium with a min depth of 900mm and min soil volume of 4m3 per tree. All trees to be anchored with stainless steel wires and eyebolts. Each tree to include 2No; 60mm aeration / watering tubes per tree with SS grate. Growing media to be Living Earth Podium mix. Rootballs to be supported by Staracells or structural cells infilled with growing media as required.

TR-005 SPECIMAN TREES - PALMS
Palm trees to be planted in podium planting zones with a minimum soil depth of 1000mm and minimum soil volume of 5m³ per tree. All palms to be secured with stainless steel underground anchoring system suitable for palms. Each tree to include 2No. 60mm aeration/watering tubes and connect to integrated irrigation and drainage system. Rootballs to be supported by Staracells or structural cells infilled with growing media as required.

All dimension to be verified on site before producing shop drawings or commencing any work. Do not scale. The copyright of this drawing remains with Warren and Mahoney Architects New Zealand Ltd.

Revisions

A	14.11.25	RESOURCE	RESOURCE
B	19.12.25	PRELIMINARY	PRELIMINARY
C	22.12.25	RESOURCE	RESOURCE
D	18.02.26	RESOURCE	RESOURCE
E	09.03.26	RESOURCE	RESOURCE

Notes

—

Consultants

—
AECOM
Project Manager
ROBERT BIRD GROUP
Structural Engineer
NDY
Mechanical Engineer
JENSEN HUGHES
Fire Engineer
NDY
Electrical Engineer

Client

—
WESTHAVEN RESIDENTIAL
LIMITED PARTNERSHIP

Warren and Mahoney Architects New Zealand Ltd

—
Ground Floor, Mason Bros.
139 Pakenham Street West
Wynyard Quarter
Auckland 1010
New Zealand
Phone + 64 9 309 4894

—
Registered Architects and Designers
www.warrenandmahoney.com

Project Title

188 BEAUMONT STREET

WYNYARD QUARTER

LANDSCAPE DRAWING SET

Drawing Title

KEYSHEET

Drawing Status

RESOURCE CONSENT

Drawing Details

—
Scale @ A1
Date 09.03.26
Job No 10442
Drawn Author
Checked Checker

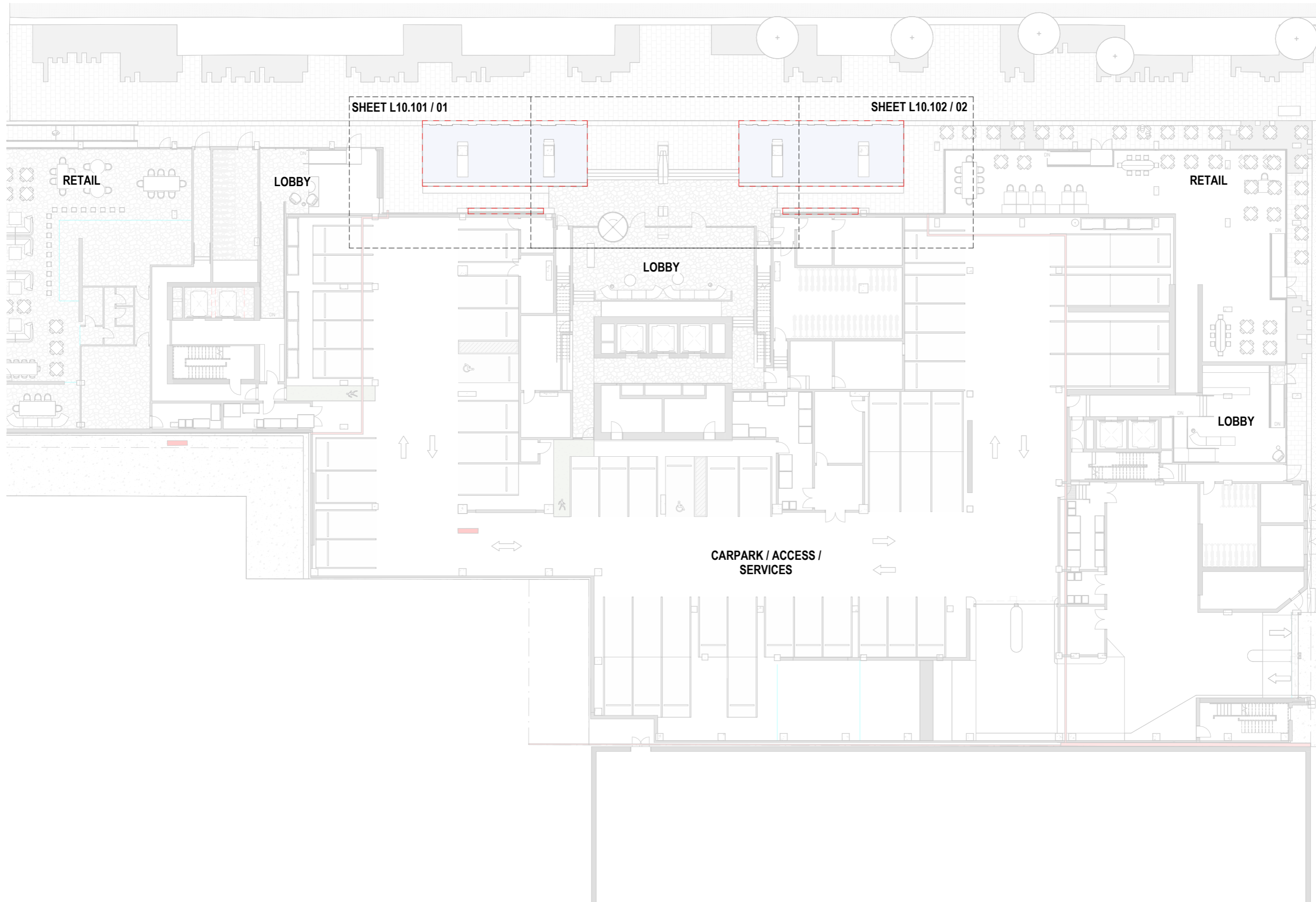
Drawing No

—
L00.002

Revision

—
E

JELlicoe STREET



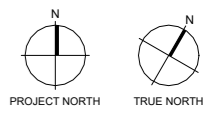
Revisions

A	14.11.25	RESOURCE CONSENT DRAFT
B	19.12.25	PRELIMINARY DESIGN
C	22.12.25	RESOURCE CONSENT DRAFT
D	18.02.26	RESOURCE CONSENT
E	09.03.26	RESOURCE CONSENT

Notes

—

KEY :
— EXTENT OF WORKS



Consultants

- AECOM
Project Manager
- ROBERT BIRD GROUP
Structural Engineer
- NDY
Mechanical Engineer
- JENSEN HUGHES
Fire Engineer
- NDY
Electrical Engineer

Client

WESTHAVEN RESIDENTIAL LIMITED PARTNERSHIP

Ground Floor, Mason Bros.
139 Pakenham Street West
Wynyard Quarter
Auckland 1010
New Zealand
Phone + 64 9 309 4894

Registered Architects and Designers
www.warrenandmahoney.com
Project Title

188 BEAUMONT STREET
WYNYARD QUARTER
LANDSCAPE DRAWING SET

Drawing Title
SITE PLAN - SHEET LAYOUT GF

Drawing Status
RESOURCE CONSENT

Drawing Details

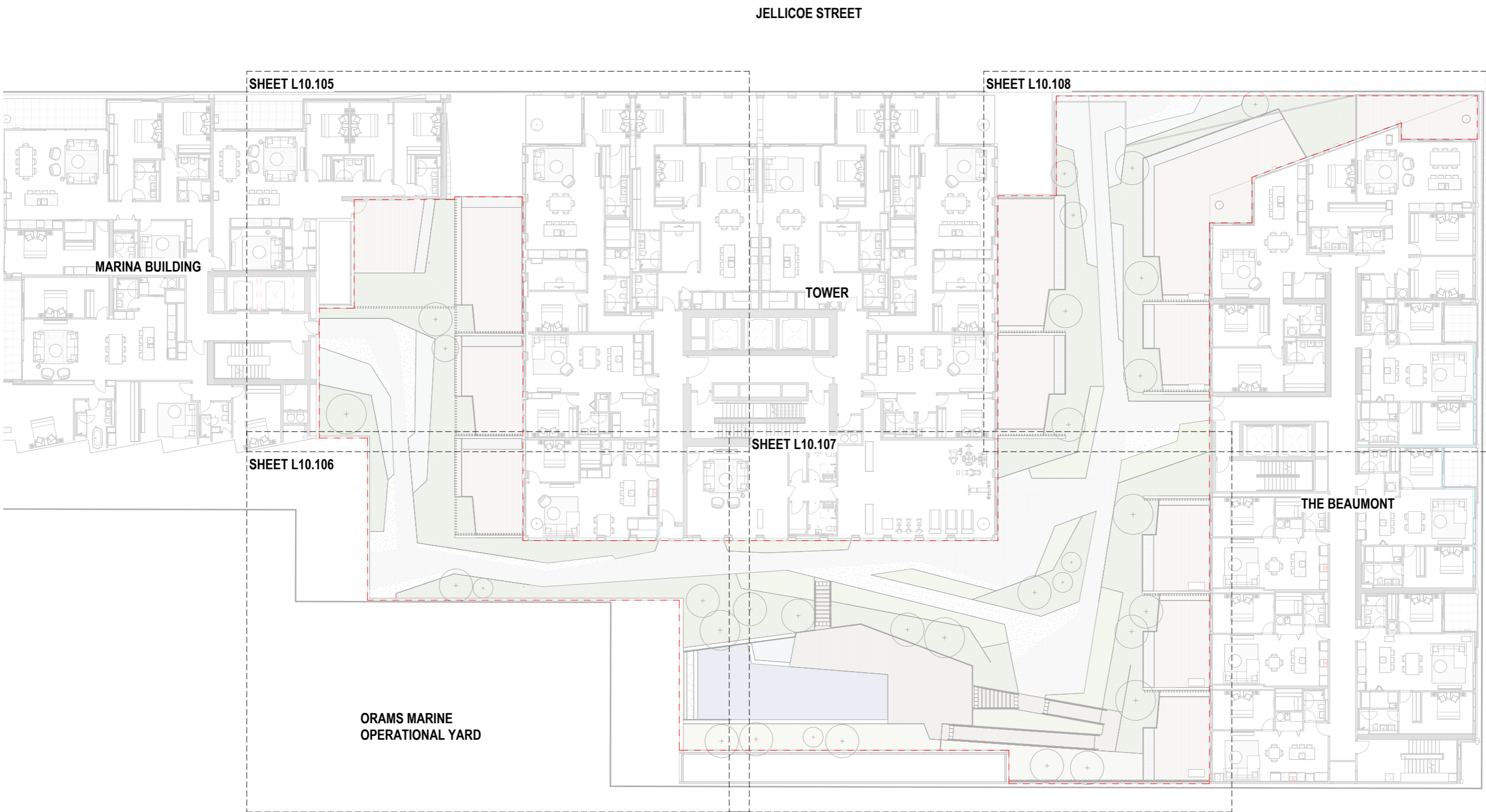
Scale	1 : 150@ A1
Date	09.03.26
Job No	10442
Drawn	Author
Checked	Checker

Drawing No	Revision
L10.005	(E)

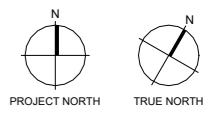
Revisions

A	14.11.25	RESOURCE CONSENT DRAFT
B	19.12.25	PRELIMINARY DESIGN
C	22.12.25	RESOURCE CONSENT DRAFT
D	18.02.26	RESOURCE CONSENT
E	09.03.26	RESOURCE CONSENT

Notes



KEY :
 - - - - - EXTENT OF WORKS



- Consultants**
- AECOM
Project Manager
 - ROBERT BIRD GROUP
Structural Engineer
 - NDY
Mechanical Engineer
 - JENSEN HUGHES
Fire Engineer
 - NDY
Electrical Engineer

Client
 WESTHAVEN RESIDENTIAL LIMITED PARTNERSHIP

Ground Floor, Mason Bros.
 139 Pakenham Street West
 Wynyard Quarter
 Auckland 1010
 New Zealand
 Phone + 64 9 309 4894

Registered Architects and Designers
 www.warrenandmahoney.com
Project Title

188 BEAUMONT STREET
 WYNYARD QUARTER
 LANDSCAPE DRAWING SET

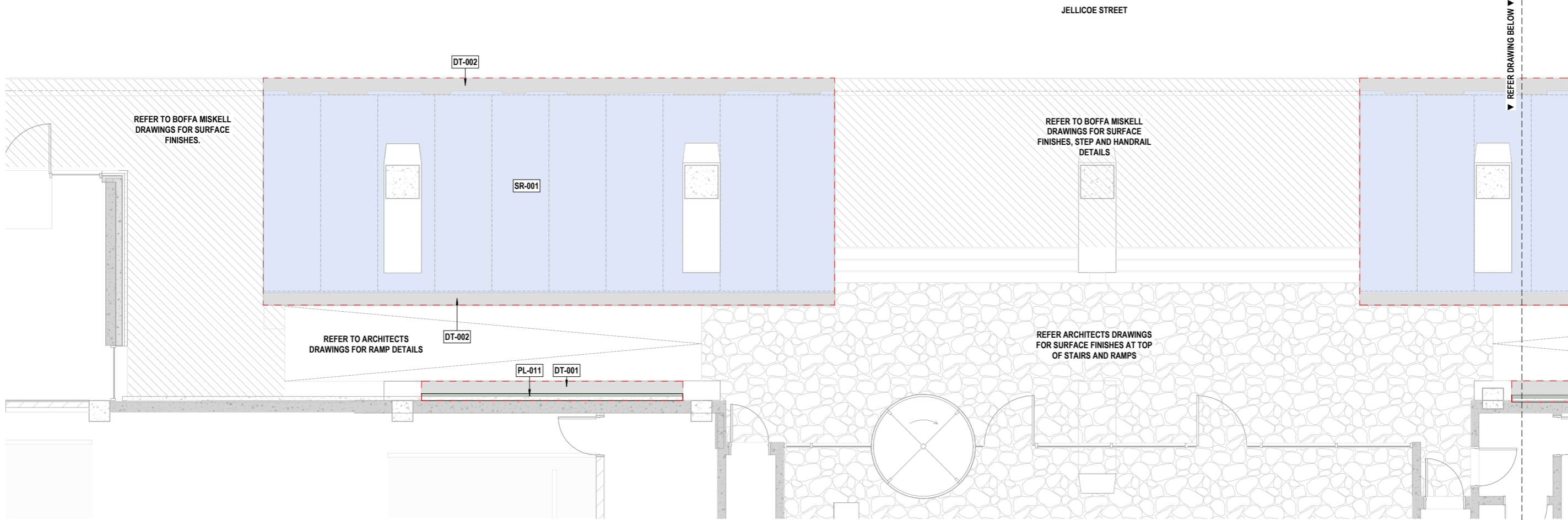
Drawing Title
 SITE PLAN - SHEET LAYOUT L04

Drawing Status
 RESOURCE CONSENT

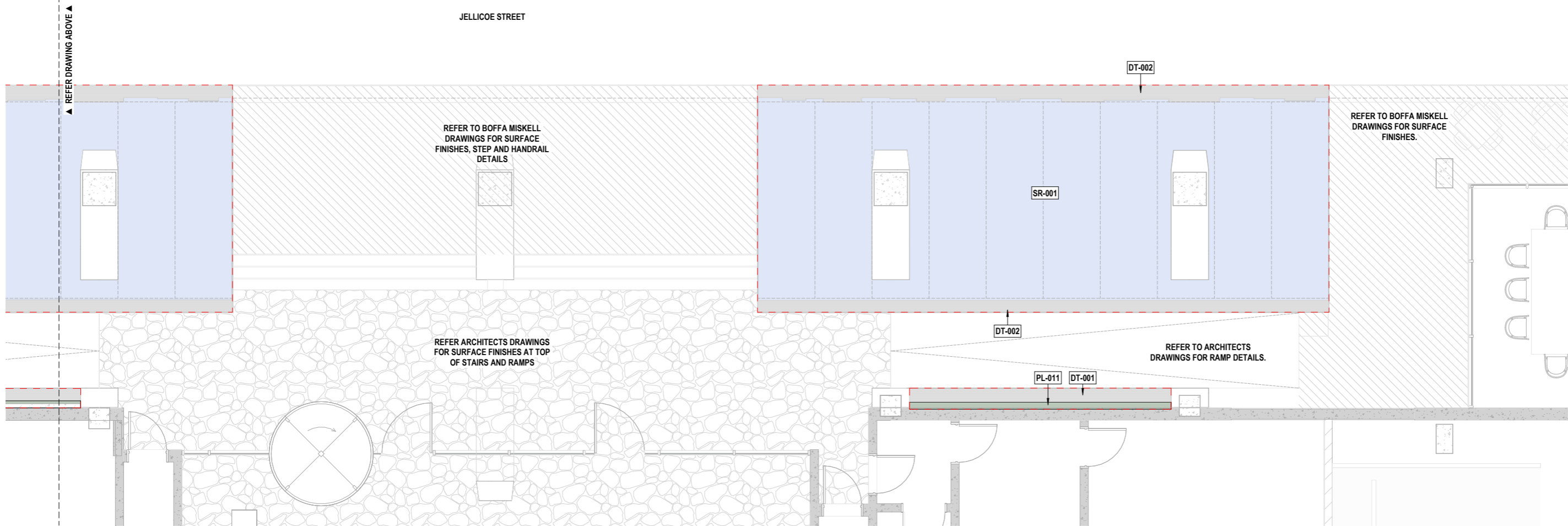
Drawing Details

Scale	1 : 150@ A1
Date	09.03.26
Job No	10442
Drawn	Author
Checked	Checker

Drawing No L10.006
Revision (E)



1 GENERAL ARRANGEMENT - GF / WEST
1:50



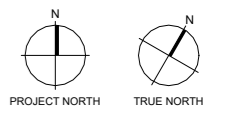
2 GENERAL ARRANGEMENT - GF / EAST
1:50

Revisions

A	14.11.25	RESOURCE CONSENT DRAFT
B	19.12.25	PRELIMINARY DESIGN
C	22.12.25	RESOURCE CONSENT DRAFT
D	18.02.26	RESOURCE CONSENT
E	09.03.26	RESOURCE CONSENT

Notes

KEY :
 - - - EXTENT OF WORKS
 - - - STRATACELL



Consultants

- AECOM
Project Manager
- ROBERT BIRD GROUP
Structural Engineer
- NDY
Mechanical Engineer
- JENSEN HUGHES
Fire Engineer
- NDY
Electrical Engineer

Client
 WESTHAVEN RESIDENTIAL LIMITED PARTNERSHIP

Ground Floor, Mason Bros.
 139 Pakenham Street West
 Wynyard Quarter
 Auckland 1010
 New Zealand
 Phone + 64 9 309 4894

Registered Architects and Designers
 www.warrenandmahoney.com

Project Title
 188 BEAUMONT STREET
 WYNYARD QUARTER
 LANDSCAPE DRAWING SET

Drawing Title
 GENERAL ARRANGEMENT PLAN - GF

Drawing Status
 RESOURCE CONSENT

Drawing Details

Scale	1 : 50@ A1
Date	09.03.26
Job No	10442
Drawn	Author
Checked	Checker

Drawing No L10.102
Revision (E)

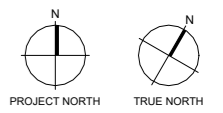


Revisions

A	14.11.25	RESOURCE CONSENT DRAFT
B	19.12.25	PRELIMINARY DESIGN
C	22.12.25	RESOURCE CONSENT DRAFT
D	18.02.26	RESOURCE CONSENT
E	09.03.26	RESOURCE CONSENT

Notes

KEY :
 - - - EXTENT OF WORKS
 - - - STRATACELL



- Consultants**
- AECOM
Project Manager
 - ROBERT BIRD GROUP
Structural Engineer
 - NDY
Mechanical Engineer
 - JENSEN HUGHES
Fire Engineer
 - NDY
Electrical Engineer

Client
 WESTHAVEN RESIDENTIAL LIMITED PARTNERSHIP

Ground Floor, Mason Bros.
 139 Pakenham Street West
 Wynyard Quarter
 Auckland 1010
 New Zealand
 Phone + 64 9 309 4894

Registered Architects and Designers
www.warrenandmahoney.com
Project Title

188 BEAUMONT STREET
 WYNYARD QUARTER
 LANDSCAPE DRAWING SET

Drawing Title
 GENERAL ARRANGEMENT PLAN - L04

Drawing Status
 RESOURCE CONSENT

Drawing Details

Scale	1 : 50@ A1
Date	09.03.26
Job No	10442
Drawn	Author
Checked	Checker

Drawing No
 L10.105

Revision
 (E)



▲ REFER SHEET L10.105 ▲

Revisions

A	14.11.25	RESOURCE CONSENT DRAFT
B	19.12.25	PRELIMINARY DESIGN
C	22.12.25	RESOURCE CONSENT DRAFT
D	18.02.26	RESOURCE CONSENT
E	09.03.26	RESOURCE CONSENT

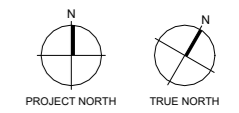
Notes

—

KEY :

— EXTENT OF WORKS

— STRATACELL



Consultants

— AECOM
Project Manager

— ROBERT BIRD GROUP
Structural Engineer

— NDY
Mechanical Engineer

— JENSEN HUGHES
Fire Engineer

— NDY
Electrical Engineer

Client

— WESTHAVEN RESIDENTIAL LIMITED PARTNERSHIP

Ground Floor, Mason Bros.
139 Pakenham Street West
Wynyard Quarter
Auckland 1010
New Zealand
Phone + 64 9 309 4894

Registered Architects and Designers
www.warrenandmahoney.com

Project Title

— 188 BEAUMONT STREET
WYNYARD QUARTER
LANDSCAPE DRAWING SET

Drawing Title

— GENERAL ARRANGEMENT PLAN - L04

Drawing Status

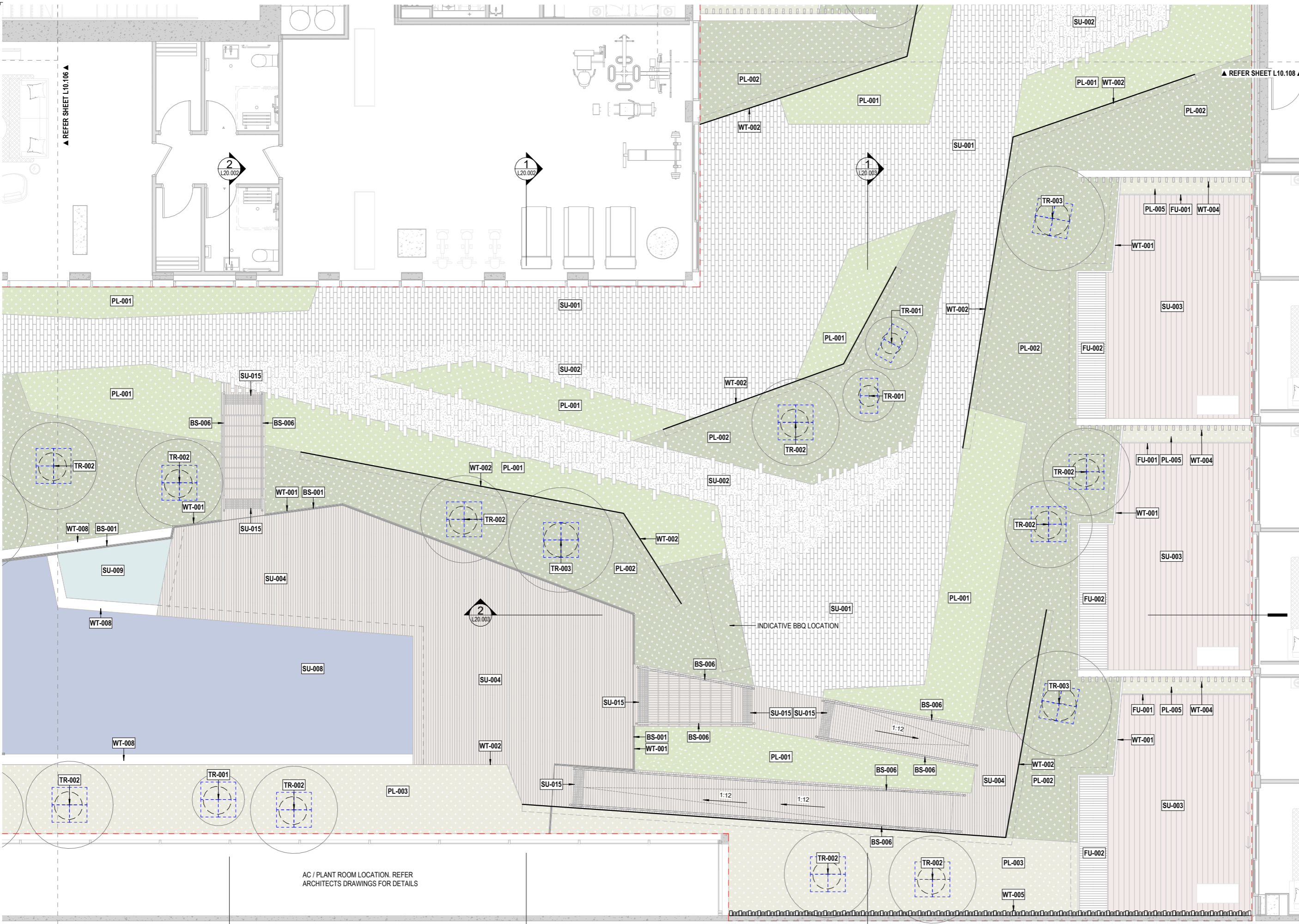
— RESOURCE CONSENT

Drawing Details

Scale	1 : 50@ A1
Date	09.03.26
Job No	10442
Drawn	Author
Checked	Checker

Drawing No L10.106

Revision (E)



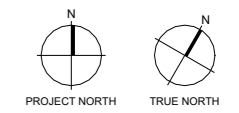
Revisions

A	14.11.25	RESOURCE CONSENT DRAFT
B	19.12.25	PRELIMINARY DESIGN
C	22.12.25	RESOURCE CONSENT DRAFT
D	18.02.26	RESOURCE CONSENT
E	09.03.26	RESOURCE CONSENT

Notes

KEY :

- EXTENT OF WORKS
- - - STRATACELL



Consultants

- AECOM Project Manager
- ROBERT BIRD GROUP Structural Engineer
- NDY Mechanical Engineer
- JENSEN HUGHES Fire Engineer
- NDY Electrical Engineer

Client

- WESTHAVEN RESIDENTIAL LIMITED PARTNERSHIP

Ground Floor, Mason Bros.
139 Pakenham Street West
Wynyard Quarter
Auckland 1010
New Zealand
Phone + 64 9 309 4894

Registered Architects and Designers
www.warrenandmahoney.com

Project Title

188 BEAUMONT STREET
WYNYARD QUARTER
LANDSCAPE DRAWING SET

Drawing Title

GENERAL ARRANGEMENT PLAN - L04

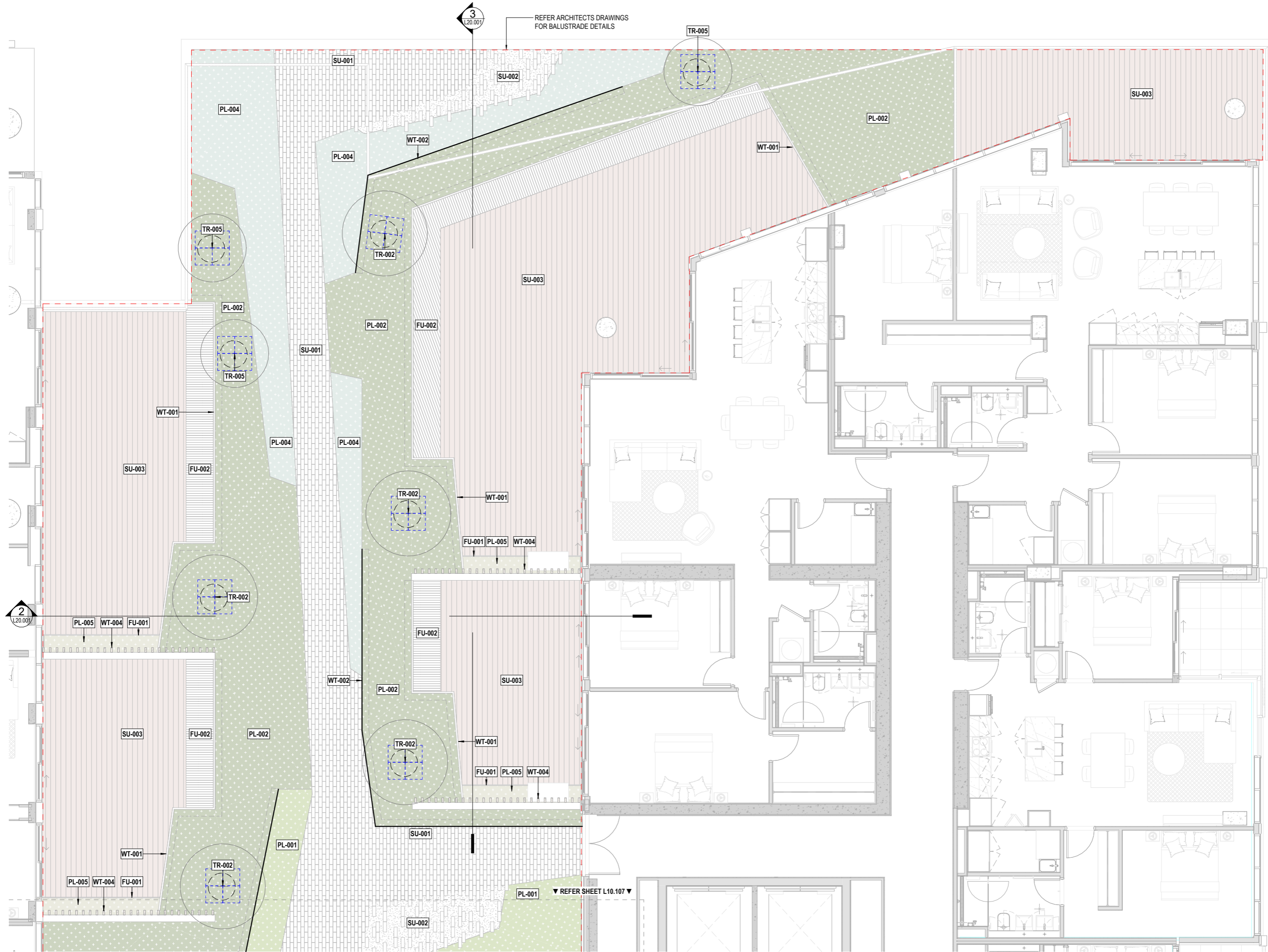
Drawing Status

RESOURCE CONSENT

Drawing Details

Scale	1 : 50@ A1
Date	09.03.26
Job No	10442
Drawn	Author
Checked	Checker

Drawing No L10.107 **Revision** (E)

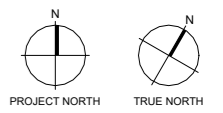


Revisions

A	14.11.25	RESOURCE CONSENT DRAFT
B	19.12.25	PRELIMINARY DESIGN
C	22.12.25	RESOURCE CONSENT DRAFT
D	18.02.26	RESOURCE CONSENT
E	09.03.26	RESOURCE CONSENT

Notes

KEY :
 - - - EXTENT OF WORKS
 - - - STRATACELL



Consultants

- AECOM
Project Manager
- ROBERT BIRD GROUP
Structural Engineer
- NDY
Mechanical Engineer
- JENSEN HUGHES
Fire Engineer
- NDY
Electrical Engineer

Client

- WESTHAVEN RESIDENTIAL LIMITED PARTNERSHIP

Ground Floor, Mason Bros.
 139 Pakenham Street West
 Wynyard Quarter
 Auckland 1010
 New Zealand
 Phone + 64 9 309 4894

Registered Architects and Designers
 www.warrenandmahoney.com
Project Title

188 BEAUMONT STREET
 WYNYARD QUARTER
 LANDSCAPE DRAWING SET

Drawing Title
GENERAL ARRANGEMENT PLAN - L04

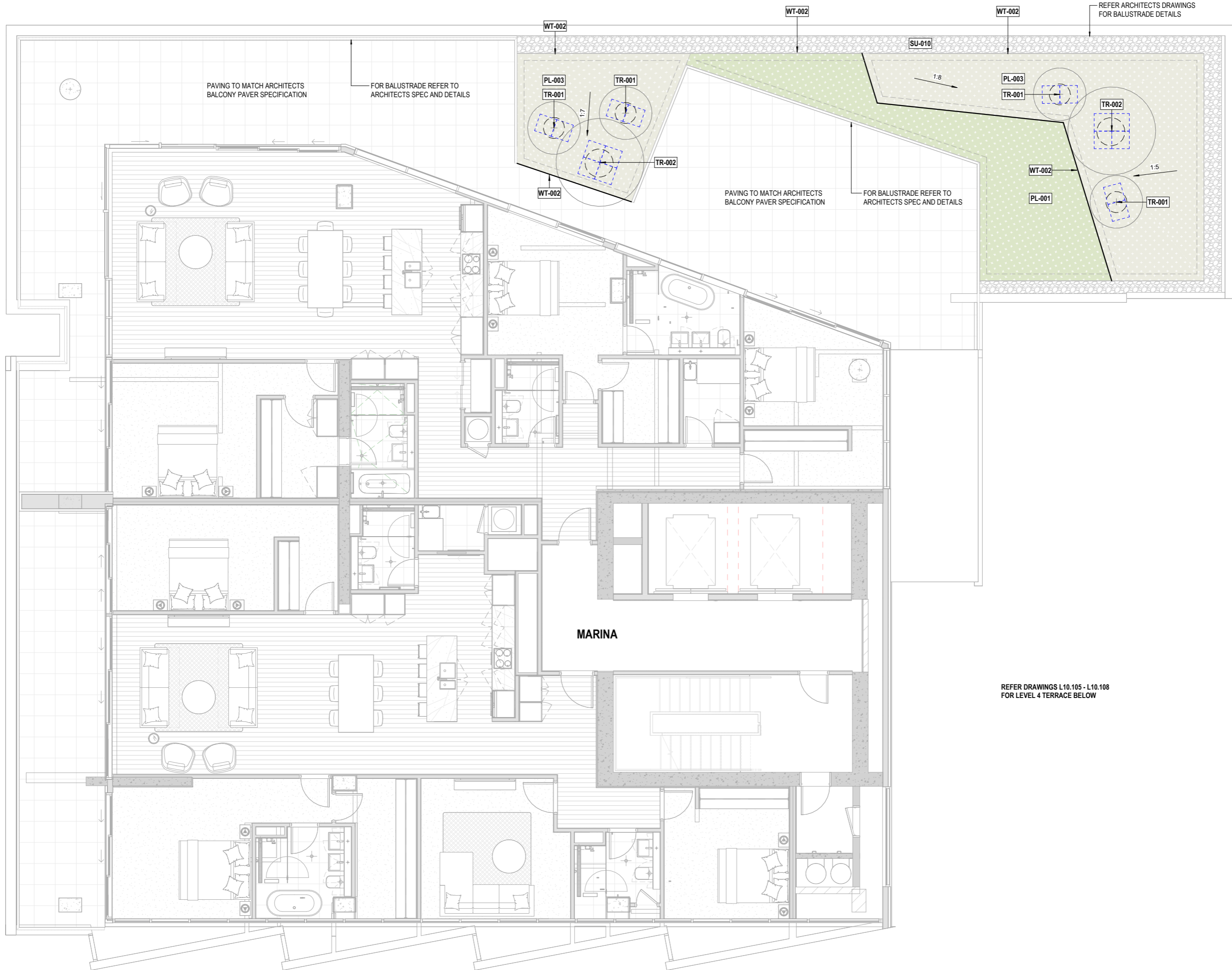
Drawing Status
RESOURCE CONSENT

Drawing Details

Scale	1 : 50@ A1
Date	09.03.26
Job No	10442
Drawn	Author
Checked	Checker

Drawing No
L10.108

Revision
E



Revisions

B	19.12.25	PRELIMINARY DESIGN
C	22.12.25	RESOURCE CONSENT DRAFT
D	18.02.26	RESOURCE CONSENT
E	09.03.26	RESOURCE CONSENT

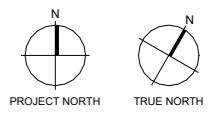
Notes

—

KEY :

— EXTENT OF WORKS

--- STRATACELL



Consultants

AECOM
Project Manager

ROBERT BIRD GROUP
Structural Engineer

NDY
Mechanical Engineer

JENSEN HUGHES
Fire Engineer

NDY
Electrical Engineer

Client

WESTHAVEN RESIDENTIAL LIMITED PARTNERSHIP

Ground Floor, Mason Bros.
139 Pakenham Street West
Wynyard Quarter
Auckland 1010
New Zealand
Phone + 64 9 309 4894

Registered Architects and Designers
www.warrenandmahoney.com

Project Title

188 BEAUMONT STREET
WYNYARD QUARTER
LANDSCAPE DRAWING SET

Drawing Title

GENERAL ARRANGEMENT PLAN - L05

Drawing Status

RESOURCE CONSENT

Drawing Details

Scale	1 : 50@ A1
Date	09.03.26
Job No	10442
Drawn	Author
Checked	Checker

Drawing No

L10.109

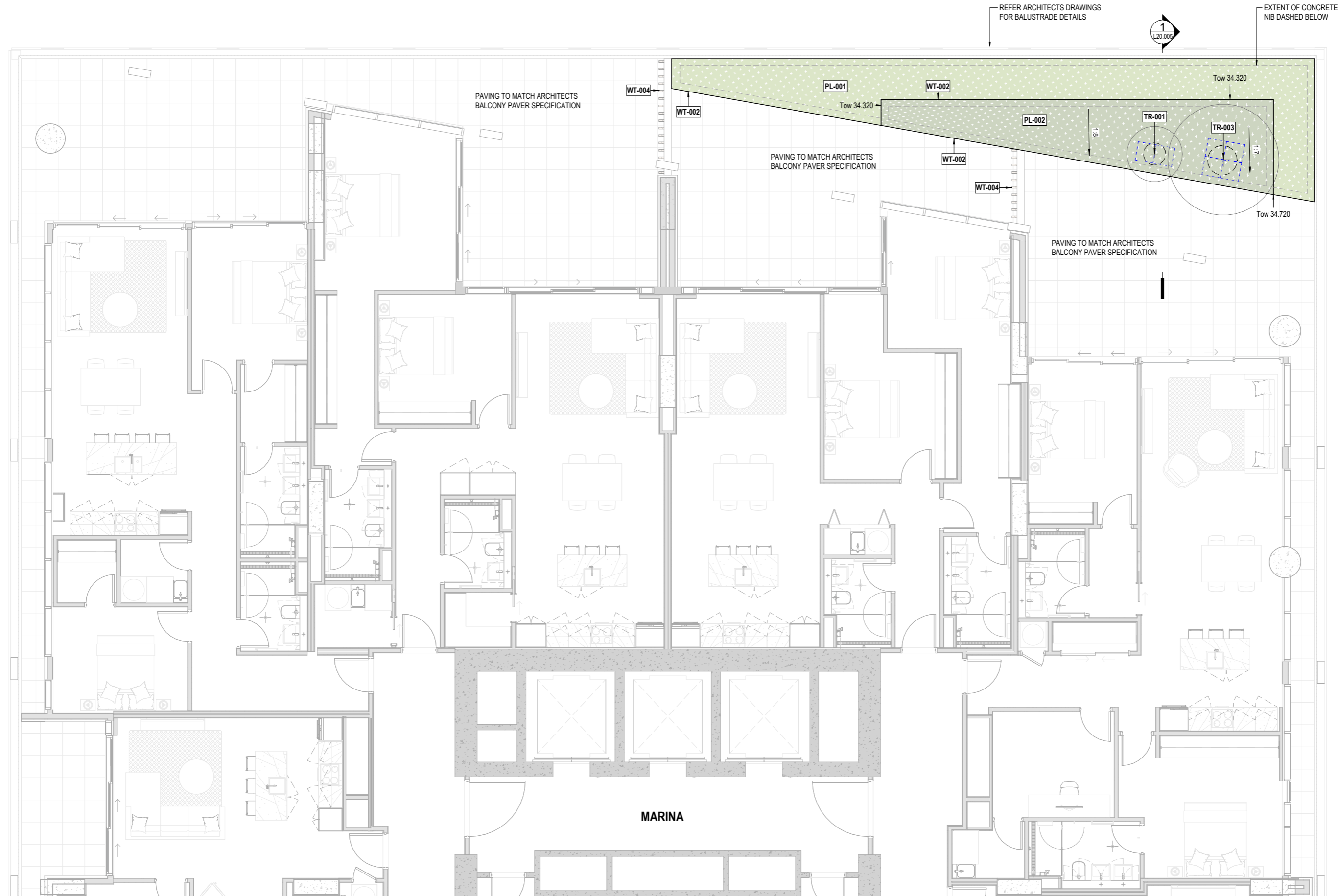
Revision

E

Revisions

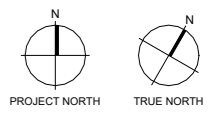
A	14.11.25	RESOURCE CONSENT DRAFT
B	19.12.25	PRELIMINARY DESIGN
C	22.12.25	RESOURCE CONSENT DRAFT
D	18.02.26	RESOURCE CONSENT
E	09.03.26	RESOURCE CONSENT

Notes



KEY :

- - - EXTENT OF WORKS
- - - STRATACELL



Consultants

- AECOM
Project Manager
- ROBERT BIRD GROUP
Structural Engineer
- NDY
Mechanical Engineer
- JENSEN HUGHES
Fire Engineer
- NDY
Electrical Engineer

Client

WESTHAVEN RESIDENTIAL LIMITED PARTNERSHIP

Ground Floor, Mason Bros.
139 Pakenham Street West
Wynyard Quarter
Auckland 1010
New Zealand
Phone + 64 9 309 4894

Registered Architects and Designers
www.warrenandmahoney.com

Project Title
188 BEAUMONT STREET
WYNYARD QUARTER
LANDSCAPE DRAWING SET

Drawing Title
GENERAL ARRANGEMENT PLAN - L09

Drawing Status
RESOURCE CONSENT

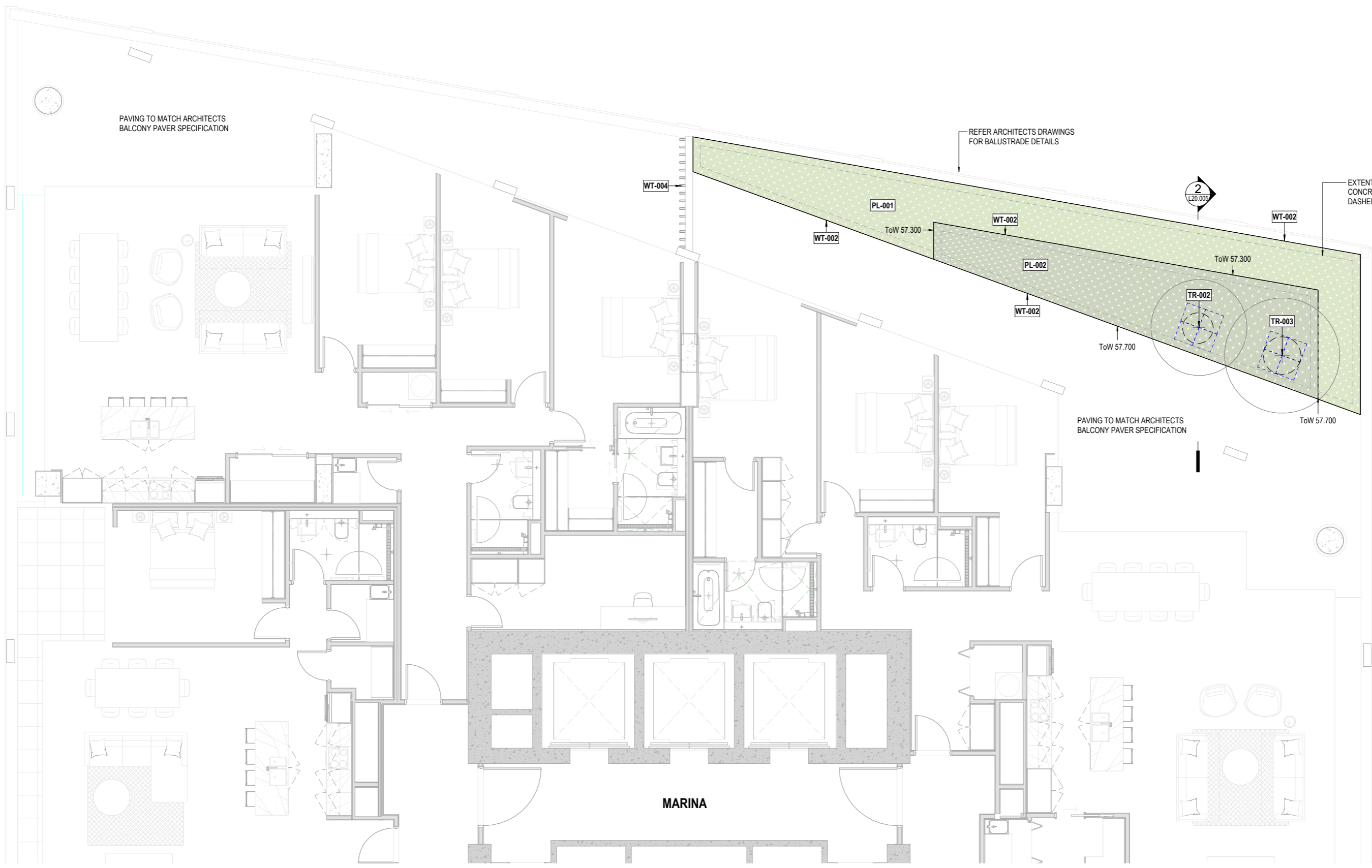
Drawing Details
Scale 1 : 50 @ A1
Date 09.03.26
Job No 10442
Drawn HML
Checked SK

Drawing No L10.110
Revision E

Revisions

A	14.11.25	RESOURCE CONSENT DRAFT
B	19.12.25	PRELIMINARY DESIGN
C	22.12.25	RESOURCE CONSENT DRAFT
D	18.02.26	RESOURCE CONSENT
E	09.03.26	RESOURCE CONSENT

Notes



KEY :

- EXTENT OF WORKS
- - - STRATACELL

PROJECT NORTH **TRUE NORTH**

- Consultants**
- AECOM
Project Manager
 - ROBERT BIRD GROUP
Structural Engineer
 - NDY
Mechanical Engineer
 - JENSEN HUGHES
Fire Engineer
 - NDY
Electrical Engineer
- Client**
- WESTHAVEN RESIDENTIAL LIMITED PARTNERSHIP

Ground Floor, Mason Bros.
139 Pakenham Street West
Wynyard Quarter
Auckland 1010
New Zealand
Phone + 64 9 309 4894

Registered Architects and Designers
www.warrenandmahoney.com
Project Title

188 BEAUMONT STREET
WYNYARD QUARTER
LANDSCAPE DRAWING SET

Drawing Title

GENERAL ARRANGEMENT PLAN - L16

Drawing Status

RESOURCE CONSENT

Drawing Details

Scale	1 : 50@ A1
Date	09.03.26
Job No	10442
Drawn	Author
Checked	Checker

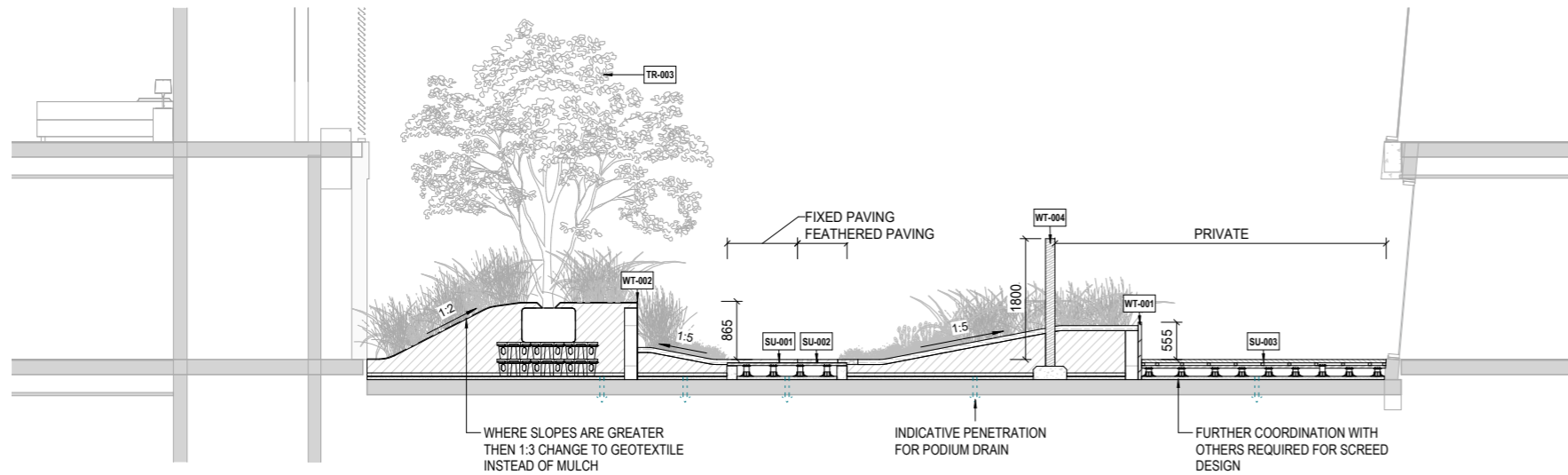
Drawing No	Revision
L10.115	E

All dimension to be verified on site before producing shop drawings or commencing any work. Do not scale. The copyright of this drawing remains with Warren and Mahoney Architects New Zealand Ltd.

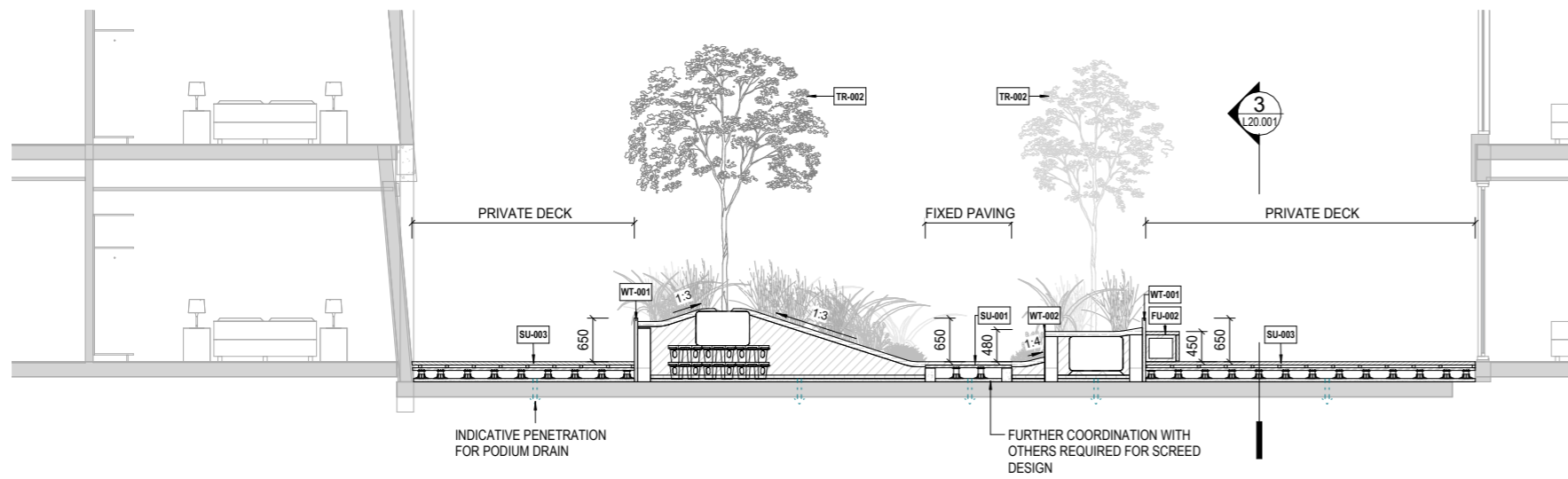
Revisions

A	14.11.25	RESOURCE CONSENT DRAFT
B	19.12.25	PRELIMINARY DESIGN
C	22.12.25	RESOURCE CONSENT DRAFT
D	18.02.26	RESOURCE CONSENT
E	09.03.26	RESOURCE CONSENT

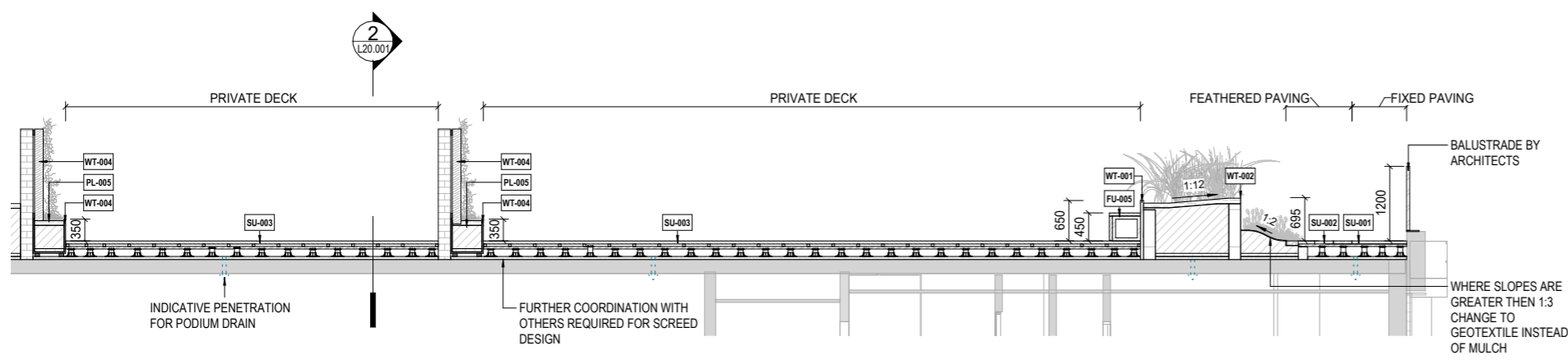
Notes



1 SITE SECTION - PRIVATE DECK WEST PATHWAY
L10.105 1:50



2 SITE SECTION - PRIVATE DECKS EAST PATHWAY
L10.108 1:50



3 SITE SECTION - EAST PATHWAY LOOKOUT
L10.108 1:50

Consultants

- AECOM
Project Manager
- ROBERT BIRD GROUP
Structural Engineer
- NDY
Mechanical Engineer
- JENSEN HUGHES
Fire Engineer
- NDY
Electrical Engineer

Client

WESTHAVEN RESIDENTIAL LIMITED PARTNERSHIP

Warren and Mahoney Architects New Zealand Ltd

Ground Floor, Mason Bros.
139 Pakenham Street West
Wynyard Quarter
Auckland 1010
New Zealand
Phone + 64 9 309 4894

Registered Architects and Designers
www.warrenandmahoney.com

Project Title

188 BEAUMONT STREET
WYNYARD QUARTER

LANDSCAPE DRAWING SET

Drawing Title

SITE SECTIONS

Drawing Status

RESOURCE CONSENT

Drawing Details

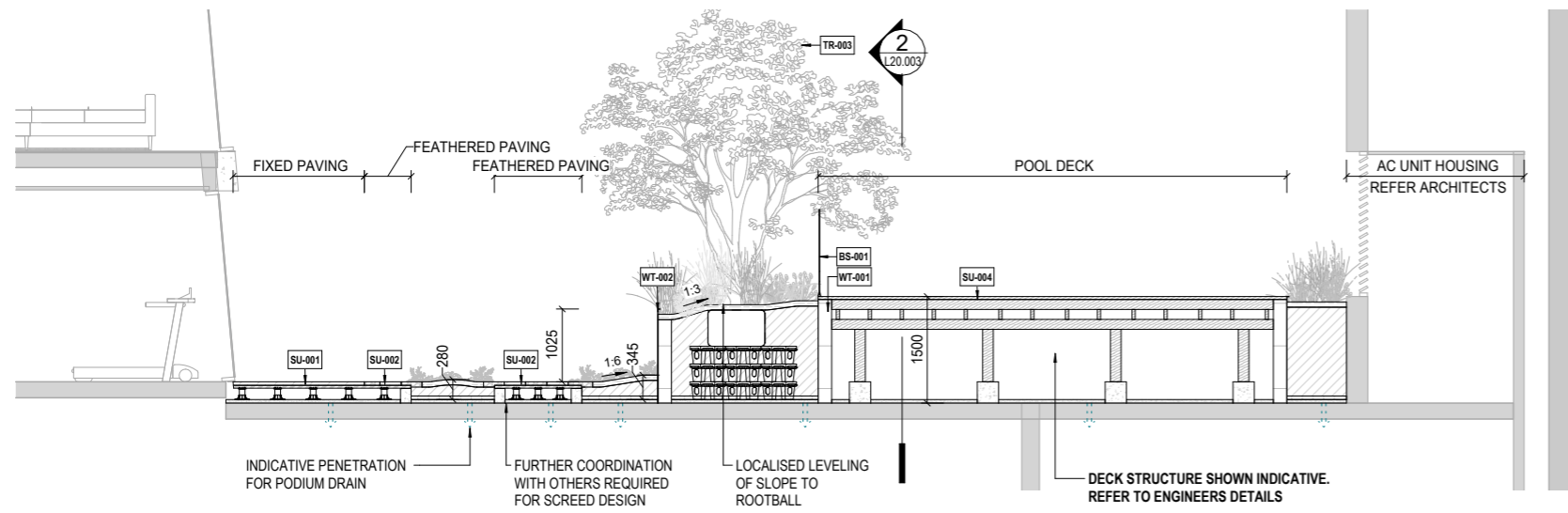
Scale	1:50@A1
Date	09.03.26
Job No	10442
Drawn	IF
Checked	SK

Drawing No

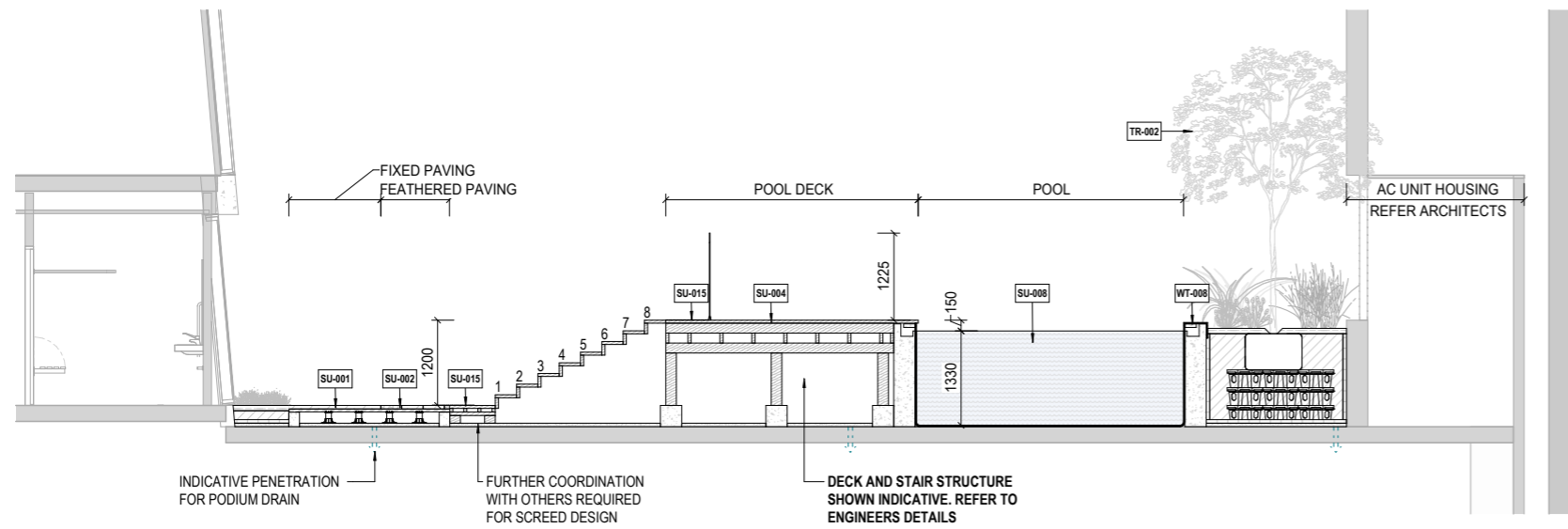
L20.001

Revision

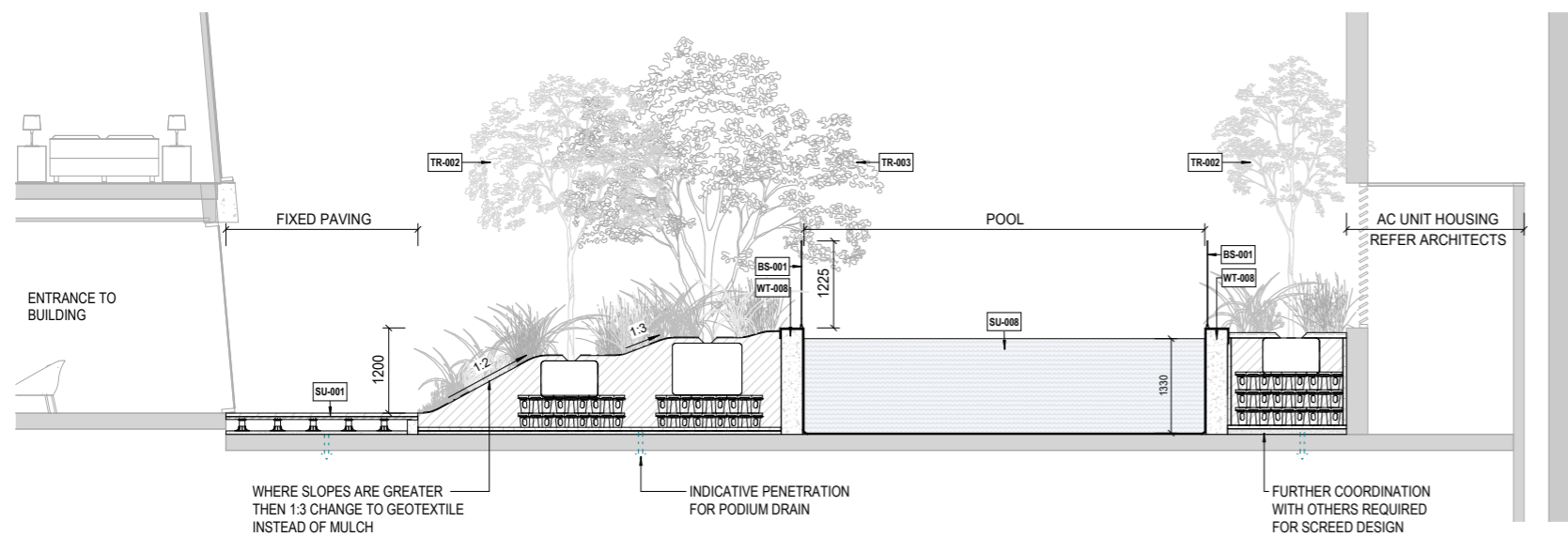
(E)



1 SITE SECTION - VALLEY AND POOL ACCESS
L10.107 1:50



2 SITE SECTION - POOL DECK
L10.107 1:50



3 SITE SECTION - POOL WATER EDGE
L10.106 1:50

All dimension to be verified on site before producing shop drawings or commencing any work. Do not scale. The copyright of this drawing remains with Warren and Mahoney Architects New Zealand Ltd.

Revisions

Revision	Date	Description
A	14.11.25	RESOURCE CONSENT DRAFT
B	19.12.25	PRELIMINARY DESIGN
C	22.12.25	RESOURCE CONSENT DRAFT
D	18.02.26	RESOURCE CONSENT
E	09.03.26	RESOURCE CONSENT

Notes

—

Consultants

- AECOM
Project Manager
- ROBERT BIRD GROUP
Structural Engineer
- NDY
Mechanical Engineer
- JENSEN HUGHES
Fire Engineer
- NDY
Electrical Engineer

Client

WESTHAVEN RESIDENTIAL LIMITED PARTNERSHIP

Warren and Mahoney Architects New Zealand Ltd

Ground Floor, Mason Bros.
139 Pakenham Street West
Wynyard Quarter
Auckland 1010
New Zealand
Phone + 64 9 309 4894

Registered Architects and Designers
www.warrenandmahoney.com

Project Title

188 BEAUMONT STREET
WYNYARD QUARTER
LANDSCAPE DRAWING SET

Drawing Title

SITE SECTIONS

Drawing Status

RESOURCE CONSENT

Drawing Details

Scale	1:50@A1
Date	09.03.26
Job No	10442
Drawn	IF
Checked	SK

Drawing No

L20.002

Revision

(E)

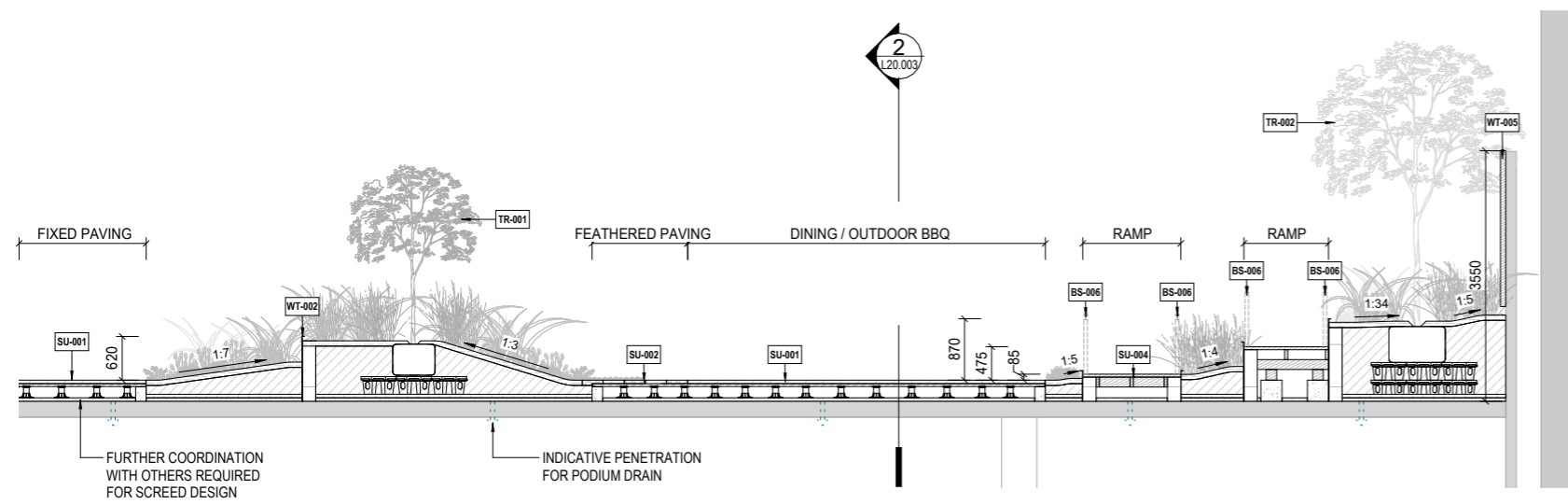
All dimension to be verified on site before producing shop drawings or commencing any work. Do not scale. The copyright of this drawing remains with Warren and Mahoney Architects New Zealand Ltd.

Revisions

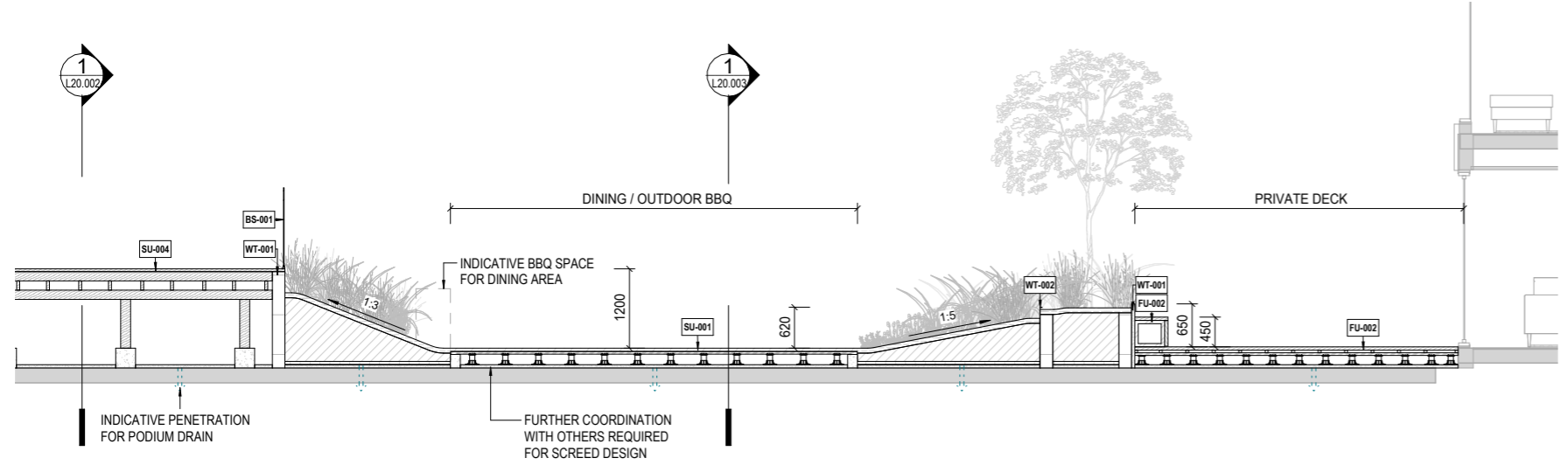
A	14.11.25	RESOURCE CONSENT DRAFT
B	19.12.25	PRELIMINARY DESIGN
C	22.12.25	RESOURCE CONSENT DRAFT
D	18.02.26	RESOURCE CONSENT
E	09.03.26	RESOURCE CONSENT

Notes

—



1 SITE SECTION - DINING
L10.107 1:50



2 SITE SECTION - DINING / BBQ ZONE
L10.107 1:50

Consultants

- AECOM
Project Manager
- ROBERT BIRD GROUP
Structural Engineer
- NDY
Mechanical Engineer
- JENSEN HUGHES
Fire Engineer
- NDY
Electrical Engineer

Client

WESTHAVEN RESIDENTIAL LIMITED PARTNERSHIP

Warren and Mahoney Architects New Zealand Ltd

Ground Floor, Mason Bros.
139 Pakenham Street West
Wynyard Quarter
Auckland 1010
New Zealand
Phone + 64 9 309 4894

Registered Architects and Designers
www.warrenandmahoney.com

Project Title

188 BEAUMONT STREET
WYNYARD QUARTER
LANDSCAPE DRAWING SET

Drawing Title

SITE SECTIONS

Drawing Status

RESOURCE CONSENT

Drawing Details

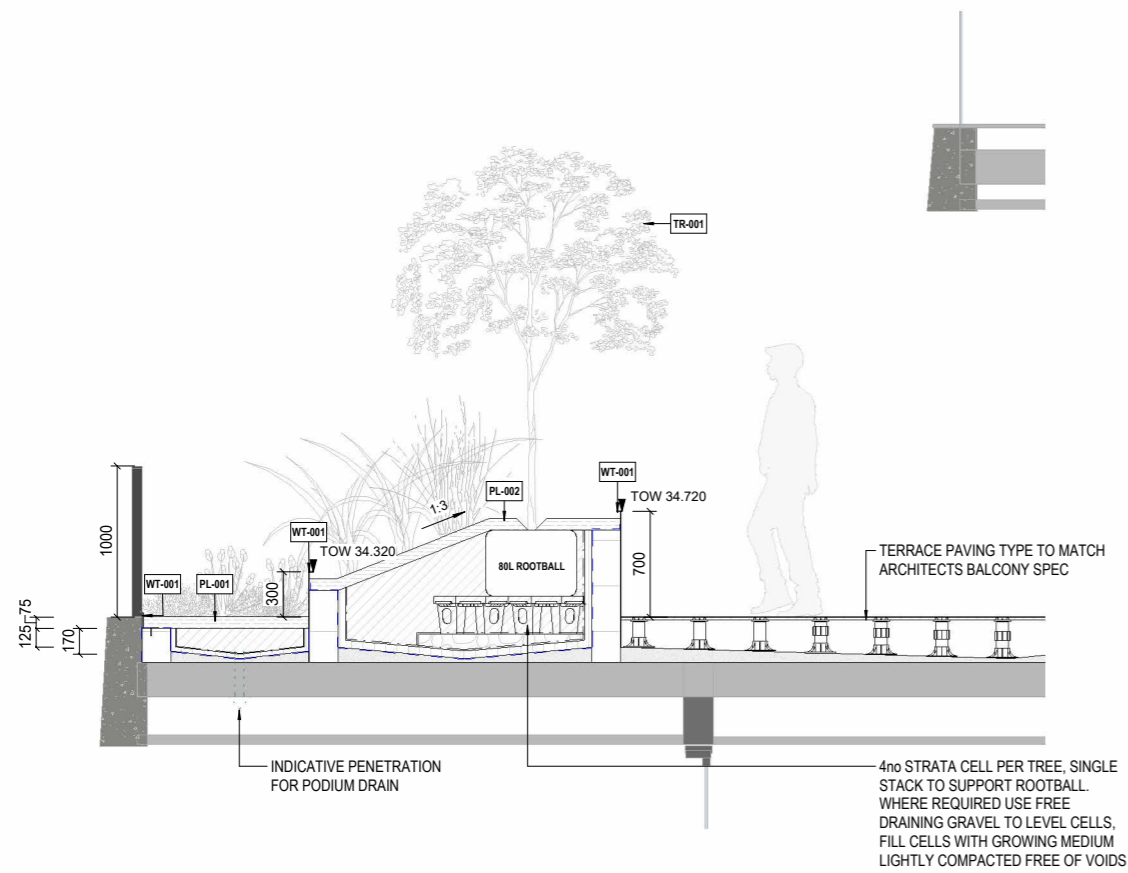
Scale	1 : 50@ A1
Date	09.03.26
Job No	10442
Drawn	Author
Checked	Checker

Drawing No

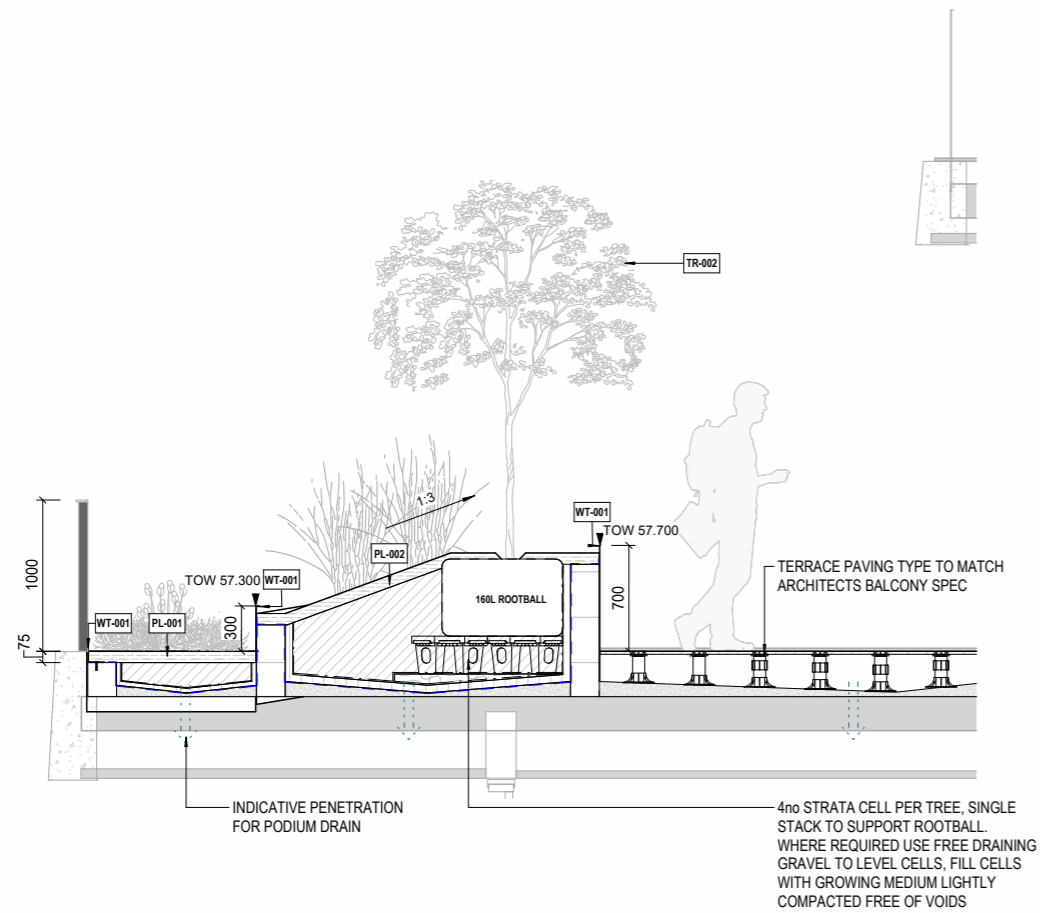
L20.003

Revision

(E)



1 LEVEL 09 PLANTER SECTION
L10.110 1:25

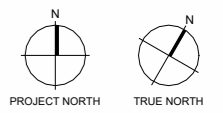


2 LEVEL 16 PLANTER SECTION
L10.115 1:25

Revisions

B	19.12.25	PRELIMINARY DESIGN
C	22.12.25	RESOURCE CONSENT DRAFT
D	18.02.26	RESOURCE CONSENT
E	09.03.26	RESOURCE CONSENT

Notes



Consultants

- AECOM
- Project Manager
- ROBERT BIRD GROUP
- Structural Engineer
- NDY
- Mechanical Engineer
- JENSEN HUGHES
- Fire Engineer
- NDY
- Electrical Engineer

Client

WESTHAVEN RESIDENTIAL LIMITED PARTNERSHIP

Ground Floor, Mason Bros.
139 Pakenham Street West
Wynyard Quarter
Auckland 1010
New Zealand
Phone + 64 9 309 4894

Registered Architects and Designers
www.warrenandmahoney.com

Project Title

188 BEAUMONT STREET
WYNYARD QUARTER
LANDSCAPE DRAWING SET

Drawing Title

SITE SECTIONS

Drawing Status

RESOURCE CONSENT

Drawing Details

Scale	1 : 25@ A1
Date	09.03.26
Job No	10442
Drawn	HML
Checked	SK

Drawing No

L20.005

Revision

(E)