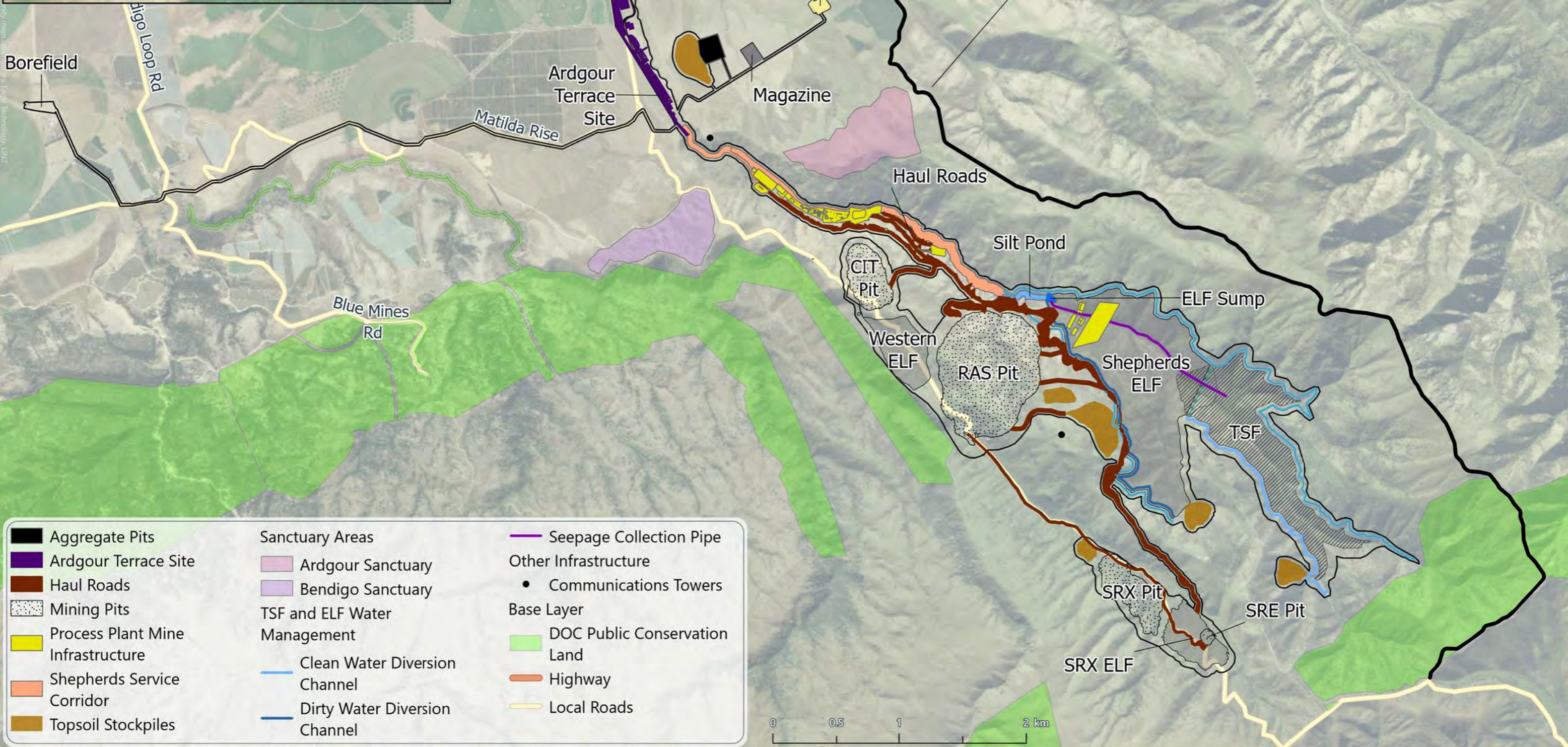
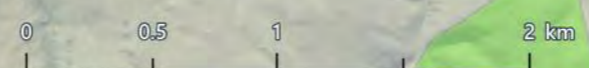
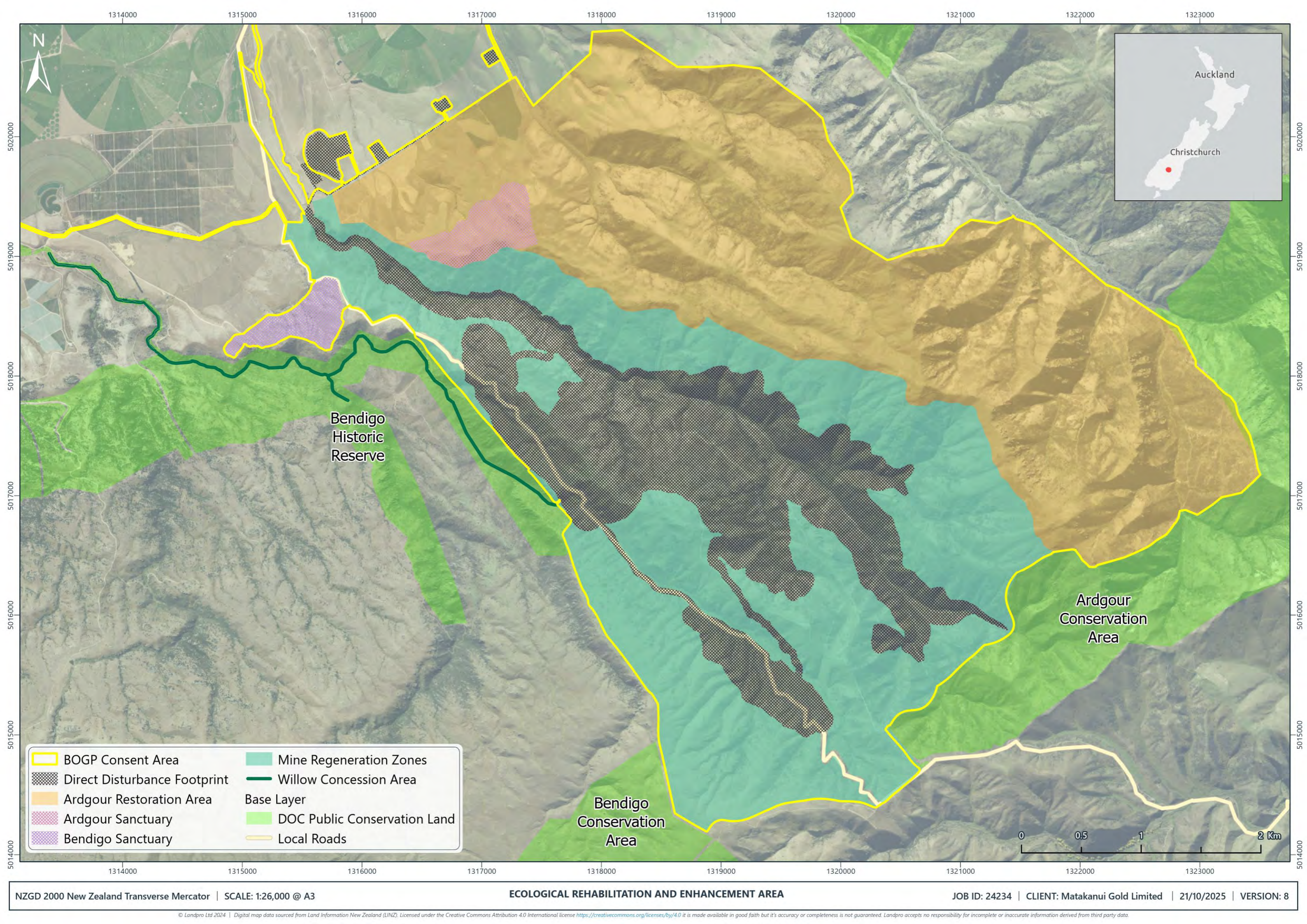


BOGP Consent Area	Bendigo & Ardgour Sanctuaries
Direct Disturbance Footprint	Mine Regeneration Zones
Bendigo Conservation Covenant	Base Layer
Bendigo Covenant Uplift Areas	DOC Public Conservation Land
Bendigo Conservation Covenant Area	Highway
Rise & Shine Creek Area	Road
Ecological Restoration & Habitat Enhancement Areas	Watercourses
Ardgour Restoration Area	



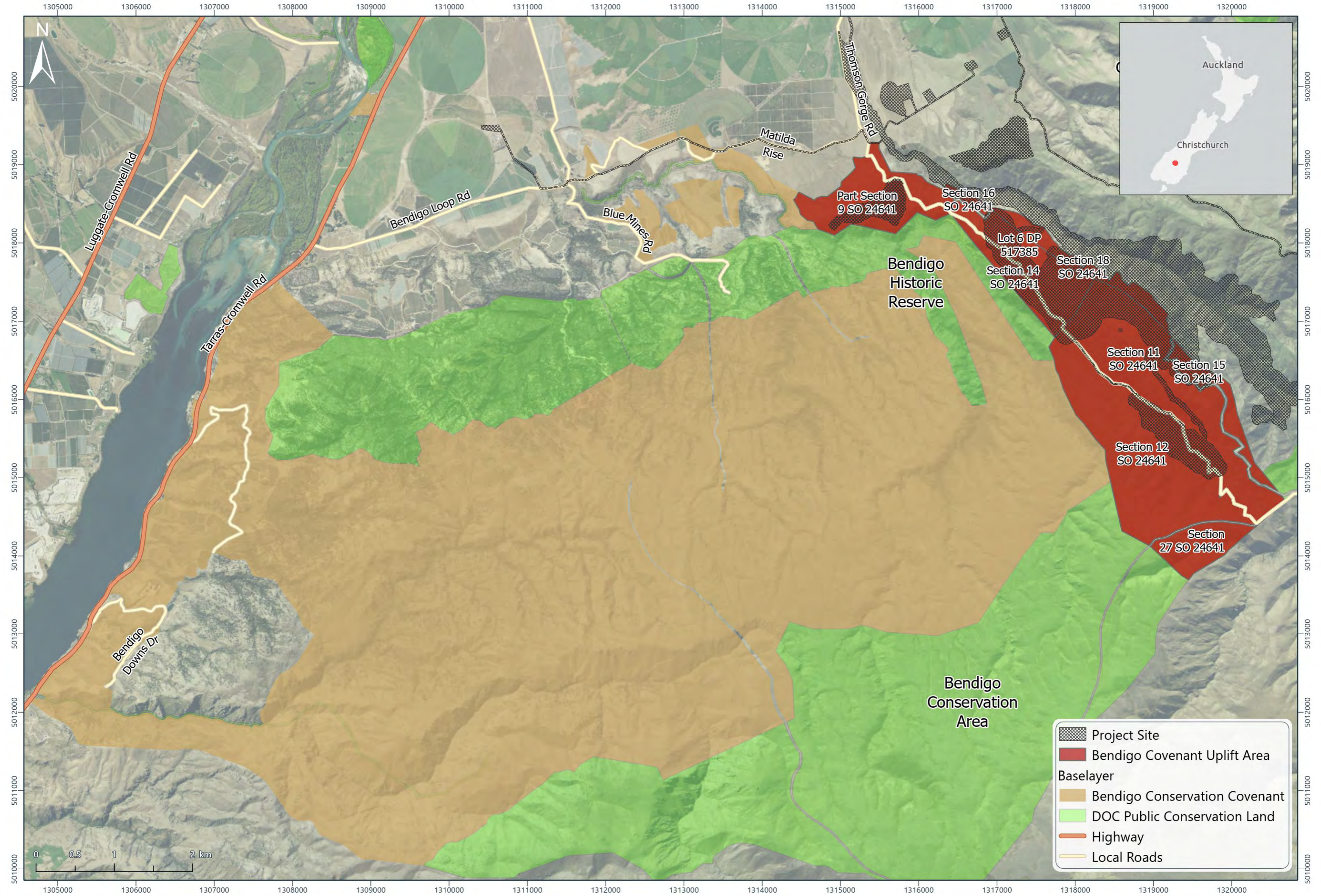
- | | | |
|-----------------------------------|-------------------------------------|------------------------------|
| Aggregate Pits | Sanctuary Areas | Seepage Collection Pipe |
| Ardgour Terrace Site | Ardgour Sanctuary | Other Infrastructure |
| Haul Roads | Bendigo Sanctuary | Communications Towers |
| Mining Pits | TSF and ELF Water Management | Base Layer |
| Process Plant Mine Infrastructure | Clean Water Diversion Channel | DOC Public Conservation Land |
| Shepherds Service Corridor | Dirty Water Diversion Channel | Highway |
| Topsoil Stockpiles | | Local Roads |



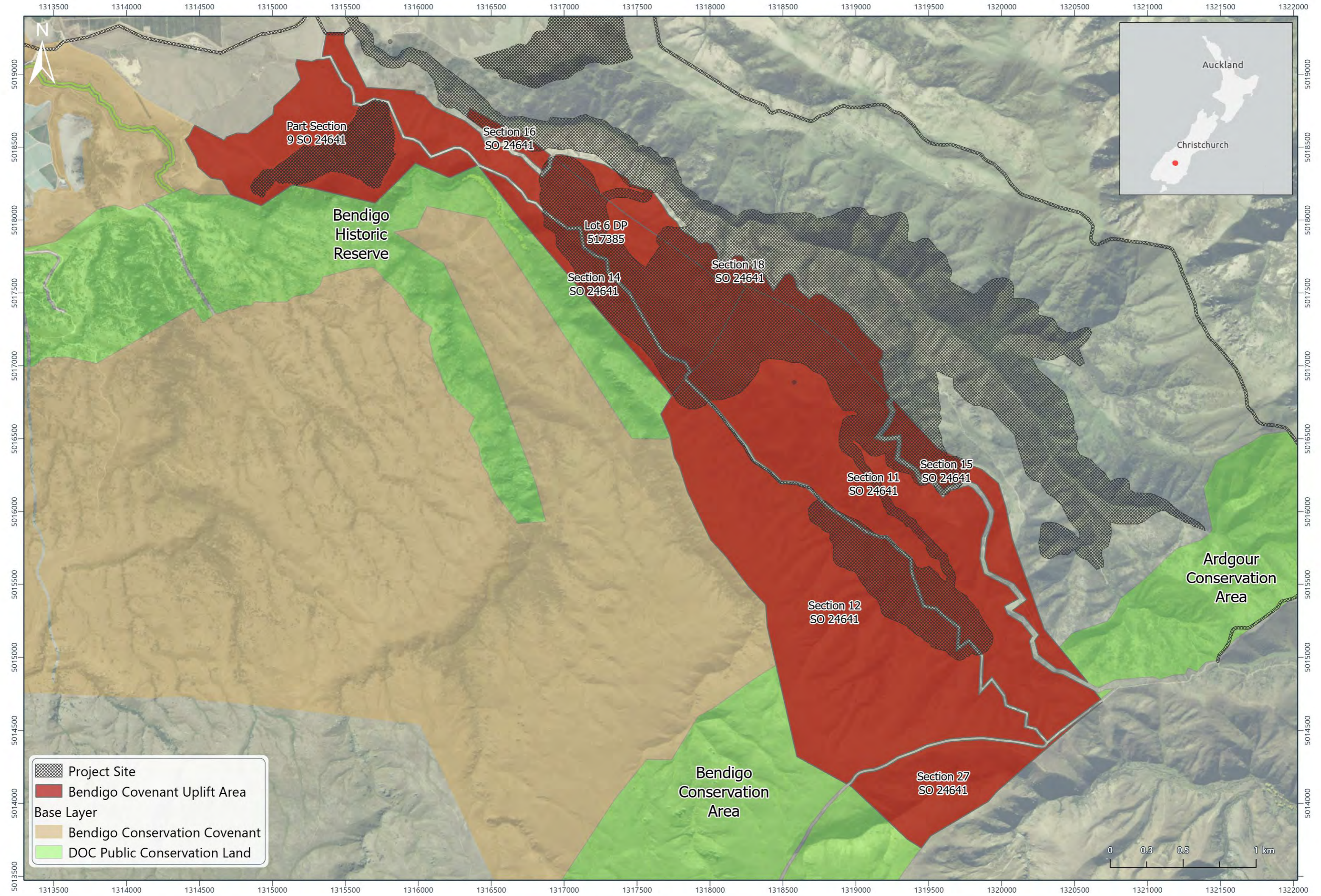


- | | |
|------------------------------|------------------------------|
| BOGP Consent Area | Mine Regeneration Zones |
| Direct Disturbance Footprint | Willow Concession Area |
| Ardgour Restoration Area | Base Layer |
| Ardgour Sanctuary | DOC Public Conservation Land |
| Bendigo Sanctuary | Local Roads |

© Landpro Ltd 2024 | Digital map data sourced from Land Information New Zealand (LINZ). Licensed under the Creative Commons Attribution 4.0 International license <https://creativecommons.org/licenses/by/4.0> it is made available in good faith but its accuracy or completeness is not guaranteed. Landpro accepts no responsibility for incomplete or inaccurate information derived from third party data.

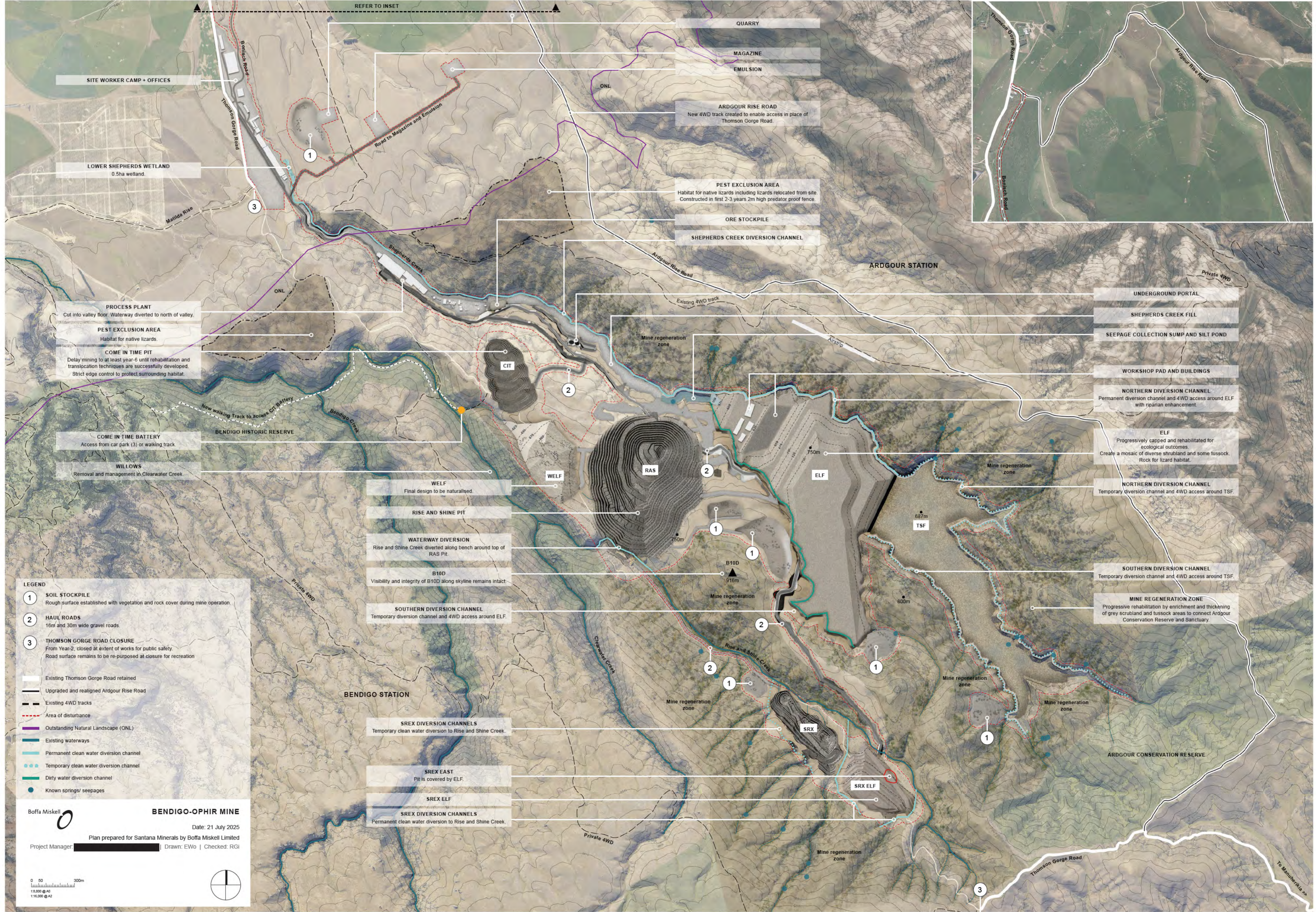


© Landpro Ltd 2024 | Digital map data sourced from Land Information New Zealand (LINZ). Licensed under the Creative Commons Attribution 4.0 International license <https://creativecommons.org/licenses/by/4.0/> it is made available in good faith but it's accuracy or completeness is not guaranteed. Landpro accepts no responsibility for incomplete or inaccurate information derived from third party data.



© Landpro Ltd 2024 | Digital map data sourced from Land Information New Zealand (LINZ). Licensed under the Creative Commons Attribution 4.0 International license <https://creativecommons.org/licenses/by/4.0> it is made available in good faith but its accuracy or completeness is not guaranteed. Landpro accepts no responsibility for incomplete or inaccurate information derived from third party data.

LANDSCAPE MITIGATION PLAN



LEGEND

- ① **SOIL STOCKPILE**
Rough surface established with vegetation and rock cover during mine operation.
- ② **HAUL ROADS**
16m and 30m wide gravel roads.
- ③ **THOMSON GORGE ROAD CLOSURE**
From Year-2, closed at extent of works for public safety. Road surface remains to be re-purposed at closure for recreation.
- Existing Thomson Gorge Road retained
- Upgraded and realigned Ardour Rise Road
- Existing 4WD tracks
- - - Area of disturbance
- Outstanding Natural Landscape (ONL)
- Existing waterways
- Permanent clean water diversion channel
- Temporary clean water diversion channel
- Dirty water diversion channel
- Known springs/ seepages

Boffa Miskell

BENDIGO-OPHIR MINE

Date: 21 July 2025

Plan prepared for Santana Minerals by Boffa Miskell Limited

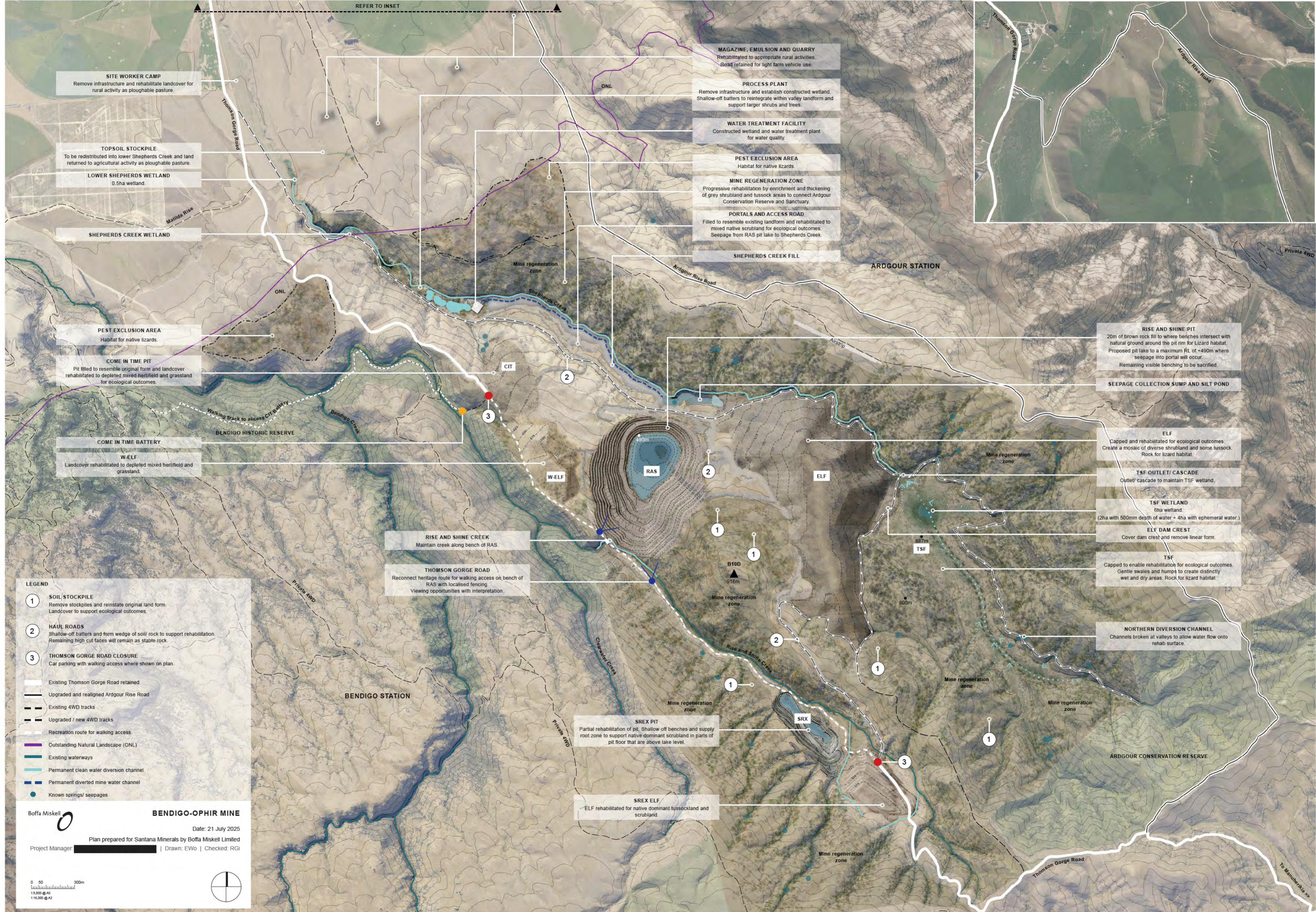
Project Manager: [Redacted] | Drawn: EWo | Checked: RGI

0 50 300m

1:5,000 @ A0

1:15,000 @ A2

LANDSCAPE CLOSURE PLAN



SITE WORKER CAMP
Remove infrastructure and rehabilitate landcover for rural activity as ploughable pasture.

TOPSOIL STOCKPILE
To be redistributed into lower Shepherds Creek and land returned to agricultural activity as ploughable pasture.

LOWER SHEPHERDS WETLAND
0.5ha wetland.

SHEPHERDS CREEK WETLAND

PEST EXCLUSION AREA
Habitat for native lizards.

COME IN TIME PIT
Pit filled to resemble original form and landcover rehabilitated to depleted mixed herbfield and grassland for ecological outcomes.

COME IN TIME BATTERY

W-ELF
Landcover rehabilitated to depleted mixed herbfield and grassland.

RISE AND SHINE CREEK
Maintain creek along bench of RAS.

THOMSON GORGE ROAD
Reconnect heritage route for walking access on bench of RAS with localised fencing. Viewing opportunities with interpretation.

SREX PIT
Partial rehabilitation of pit. Shallow off benches and supply root zone to support native dominant scrubland in parts of pit floor that are above lake level.

SREX ELF
ELF rehabilitated for native dominant tussockland and scrubland.

MAGAZINE, EMULSION AND QUARRY
Rehabilitated to appropriate rural activities. Road retained for light farm vehicle use.

PROCESS PLANT
Remove infrastructure and establish constructed wetland. Shallow-off batters to reintegrate within valley landform and support larger shrubs and trees.

WATER TREATMENT FACILITY
Constructed wetland and water treatment plant for water quality.

PEST EXCLUSION AREA
Habitat for native lizards.

MINE REGENERATION ZONE
Progressive rehabilitation by enrichment and thickening of grey shrubland and tussock areas to connect Ardour Conservation Reserve and Sanctuary.

PORTALS AND ACCESS ROAD
Filled to resemble existing landform and rehabilitated to mixed native scrubland for ecological outcomes. Seepage from RAS pit lake to Shepherds Creek.

SHEPHERDS CREEK FILL

RISE AND SHINE PIT
20m of brown rock fill to where benches intersect with natural ground around the pit rim for lizard habitat. Proposed pit lake to a maximum RL of +490m where seepage into portal will occur. Remaining visible benching to be sacrificed.

SEEPAGE COLLECTION SUMP AND SILT POND

ELF
Capped and rehabilitated for ecological outcomes. Create a mosaic of diverse shrubland and some tussock. Rock for lizard habitat.

TSF OUTLET/ CASCADE
Outlet/ cascade to maintain TSF wetland.

TSF WETLAND
6ha wetland. (2ha with 500mm depth of water + 4ha with ephemeral water.)

ELF DAM CREST
Cover dam crest and remove linear form.

TSF
Capped to enable rehabilitation for ecological outcomes. Gentle swales and humps to create distinctly wet and dry areas. Rock for lizard habitat.

NORTHERN DIVERSION CHANNEL
Channels broken at valleys to allow water flow onto rehab surface.

- LEGEND**
- 1 **SOIL STOCKPILE**
Remove stockpiles and reinstate original land form. Landcover to support ecological outcomes.
 - 2 **HAUL ROADS**
Shallow-off batters and form wedge of soil/ rock to support rehabilitation. Remaining high cut faces will remain as stable rock.
 - 3 **THOMSON GORGE ROAD CLOSURE**
Car parking with walking access where shown on plan.
 - Existing Thomson Gorge Road retained
 - Upgraded and realigned Ardour Rise Road
 - Existing 4WD tracks
 - Upgraded / new 4WD tracks
 - Recreation route for walking access
 - Outstanding Natural Landscape (ONL)
 - Existing waterways
 - Permanent clean water diversion channel
 - Permanent diverted mine water channel
 - Known springs/ seepages

Boffa Miskell **BENDIGO-OPHIR MINE**
Date: 21 July 2025
Plan prepared for Santana Minerals by Boffa Miskell Limited
Project Manager [Redacted] | Drawn: EWo | Checked: RGI

0 50 300m
1:5,000 @ A0
1:10,000 @ A2