

# BARRYTOWN MINERAL SANDS PROJECT SOUTHERN BLOCK



LANDSCAPE GRAPHIC SUPPLEMENT  
MARCH 2026 - REVISION B

# CONTENTS

## PLANS

1.0 WIDER CONTEXT PLAN	3
2.0 PROPOSED MINING AREA PLAN	4
3.0 PUBLIC CONSERVATION AREAS, RESERVES AND WALKWAYS	5
4.0 GREY DISTRICT COUNCIL: OPERATIVE DISTRICT PLAN ZONING	6
5.0 TE TAI O POUTINI PLAN: PROPOSED ZONING	7
6.0 TE TAI O POUTINI PLAN: PROPOSED VALUES	8
7.0 INDICATIVE MINING SEQUENCE PLAN	9

## IMAGES

8.0 CHARACTER IMAGES ILLUSTRATING THE ENVIRONMENT	10
9.0 DRONE IMAGES ILLUSTRATING THE MINING AREA	11
10.0 CHARACTER PANORAMAS ILLUSTRATING THE MINING AREA	12

## VIEWPOINTS

<b>11.0 VIEWPOINTS PLAN FOR PANORAMAS FURTHER AFIELD</b>	<b>13</b>
VIEWPOINT 1: APPROACHING THE BARRYTOWN FLATS ON STATE HIGHWAY 6	
VIEWPOINT 2: PORORAI HUT, PAPAROA RANGES	
<b>12.0 VIEWPOINTS PLAN FOR MINING SECTIONS 1 AND 2</b>	<b>15</b>
VIEWPOINT 3: BARRYTOWN TOWNSHIP	
VIEWPOINT 4: OPPOSITE BARRYTOWN SCHOOL (NORTH)	
VIEWPOINT 5: BARRYTOWN CEMETERY	
VIEWPOINT 6: BARRYTOWN CEMETERY (NORTH)	
VIEWPOINT 7: CARGILL ROAD (NORTH)	
VIEWPOINT 8: CARGILL ROAD FREEDOM CAMPING AREA (NORTH)	
VIEWPOINT 9: PAKIROA BEACH IN FRONT OF THE FREEDOM CAMPING AREA	
VIEWPOINT 10: PAKIROA BEACH EDGE OF THE ROCKS AND SAND	
VIEWPOINT 11: PAPAROA BEACH IN FRONT OF 114 CARGILL ROAD	
VIEWPOINT 12: PAKIROA BEACH	
VIEWPOINT 13: PAKIROA BEACH (CENTRE)	
VIEWPOINT 14: PAKIROA BEACH AND THE EXPANSIVE BARRYTOWN FLATS	
VIEWPOINT 15: PAKIROA BEACH (OPPOSITE PROSPECTOR PLACE)	
VIEWPOINT 16: PAKIROA BEACH (NORTHERN END)	
VIEWPOINT 17: COAST ROAD/SH6 SOUTH OF CANOE CREEK	
VIEWPOINT 18: COAST ROAD/SH6 IN FRONT OF PROSPECTOR PLACE	
VIEWPOINT 19: COAST ROAD/SH6 NEAR 3067 COAST ROAD	
VIEWPOINT 20: COAST ROAD/SH6 NEAR 3010 COAST ROAD	
VIEWPOINT 21: COAST ROAD/SH6 NEAR 2998 COAST ROAD	
VIEWPOINT 22: COAST ROAD/SH6 NEAR 2975 COAST ROAD	
VIEWPOINT 23: INTERSECTION OF COAST ROAD/SH6 AND WARREN ROAD	
VIEWPOINT 24: WARREN ROAD	
VIEWPOINT 25: COAST ROAD/SH6 NORTH OF BARRYTOWN TOWNSHIP	
<b>13.0 VIEWPOINTS PLAN FOR MINING SECTION 3</b>	<b>28</b>
VIEWPOINT 26: COAST ROAD/SH6 NEAR 2623 COAST ROAD	
VIEWPOINT 27: COAST ROAD/SH6 NEAR 2706 COAST ROAD	
VIEWPOINT 28: COAST ROAD/SH6 SOUTH OF BARRYTOWN TOWNSHIP	
VIEWPOINT 29: OPPOSITE BARRYTOWN SCHOOL (SOUTH)	
VIEWPOINT 30: BARRYTOWN CEMETERY (SOUTH)	
VIEWPOINT 31: CARGILL ROAD FREEDOM CAMPING (SOUTH)	
VIEWPOINT 32: PAKIROA BEACH ESCARPMENT	
VIEWPOINT 33: PAKIROA BEACH FLAX	
VIEWPOINT 34: PAKIROA BEACH (SOUTH)	
VIEWPOINT 35: FAGANS CREEK	
<b>14.0 VIEWPOINT CLUSTERS</b>	<b>34</b>
VIEWPOINT CLUSTERS CORRESPOND WITH THE DIFFERENT AREAS ASSESSED WITHIN THE VISUAL SECTION OF THE LANDSCAPE AND VISUAL LANDSCAPE ASSESSMENT	



## 2.0 PROPOSED MINING AREA PLAN



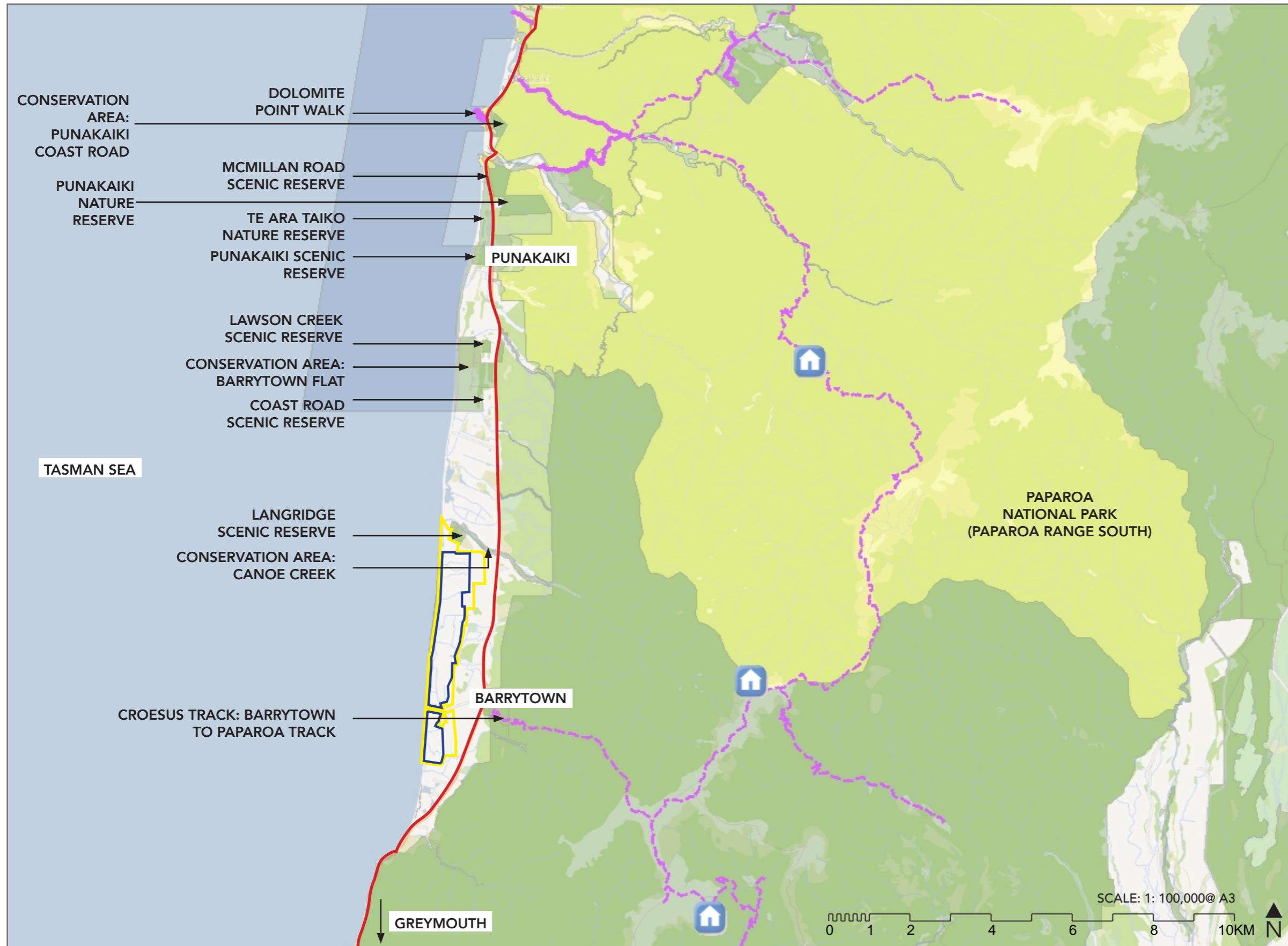
### KEY

- CONSENTED MINING AREA
- APPLICATION AREA
- MINING DISTURBANCE AREA
- COAST ROAD/ STATE HIGHWAY 6

**1** **CENTRAL BLOCK (CB)**  
 A favorable decision for the CB Mineral Sands Project was delivered by commissioners in April 2024 but was subsequently appealed. A successful resolution was reached in October 2024.  
*This area is not part of this application.*

**2** **SOUTHERN BLOCK (SB)**  
 This area is part of the current Fast Track application process and includes the mining disturbance area.

### 3.0 PUBLIC CONSERVATION AREAS, SCENIC RESERVES AND WALKWAYS



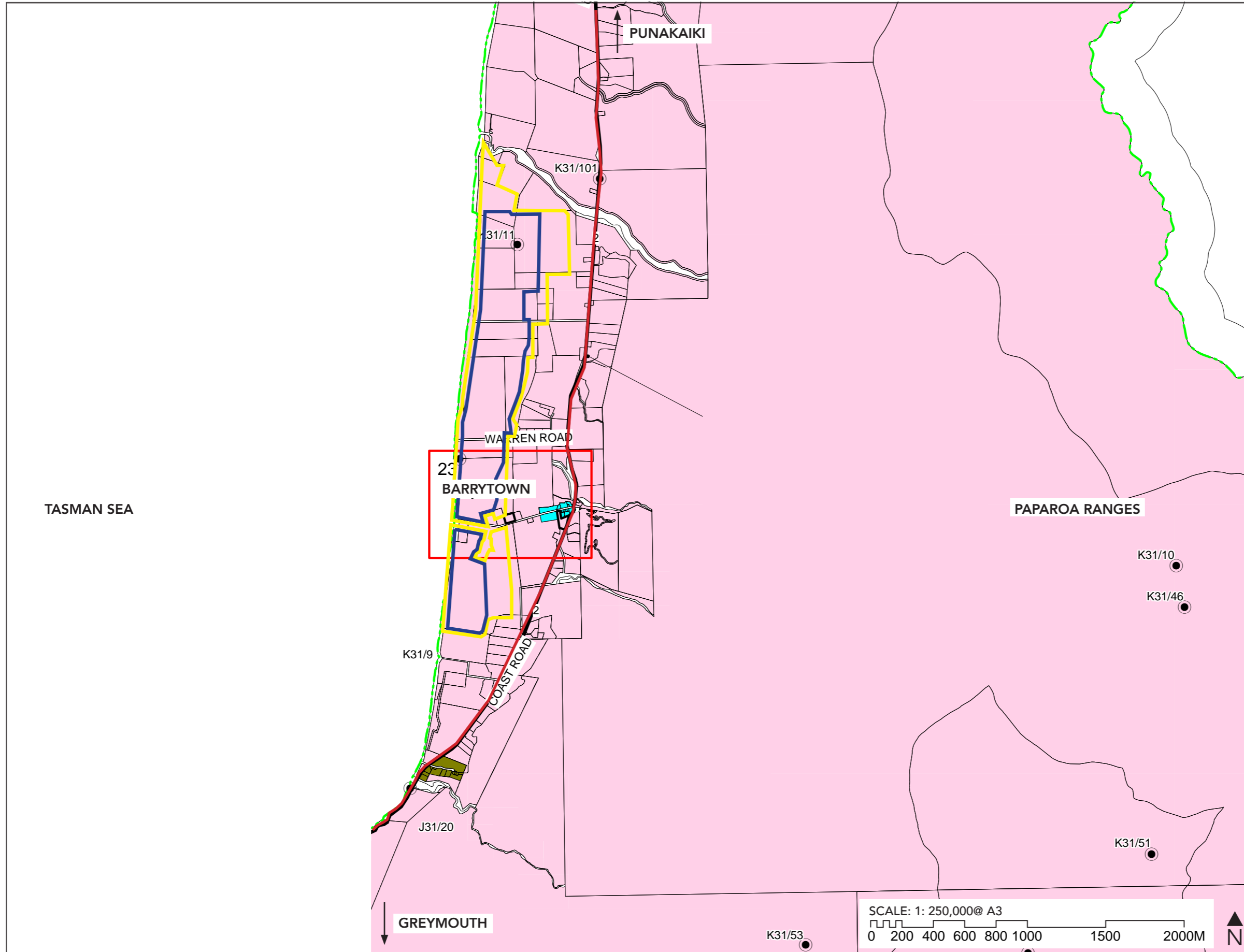
**KEY**

- APPLICATION AREA
- MINING DISTURBANCE AREA
- COAST ROAD/ STATE HIGHWAY 6
- PAPAROA NATIONAL PARK
- CONSERVATION AREA
- PUNAKAIKI MARINE RESERVE
- TASMAN SEA
- 🏠 DEPARTMENT OF CONSERVATION HUT
- - - PAPAROA WALKING AND MTB TRACKS

**Note:**  
This plan illustrates the many public conservation areas, scenic reserves and walkways which are located within the Barrytown to Punakaiki area of the West Coast as well as the Paparoa National Park. The Paparoa Track is a recognised 'Great Walk'.

**Base map credit:**  
Department of Conservation

# 4.0 GREY DISTRICT COUNCIL: OPERATIVE DISTRICT PLAN ZONING



## KEY

- APPLICATION AREA
- MINING DISTURBANCE AREA
- COAST ROAD/ STATE HIGHWAY 6
- RURAL ZONE
- ARCHAEOLOGICAL SITE

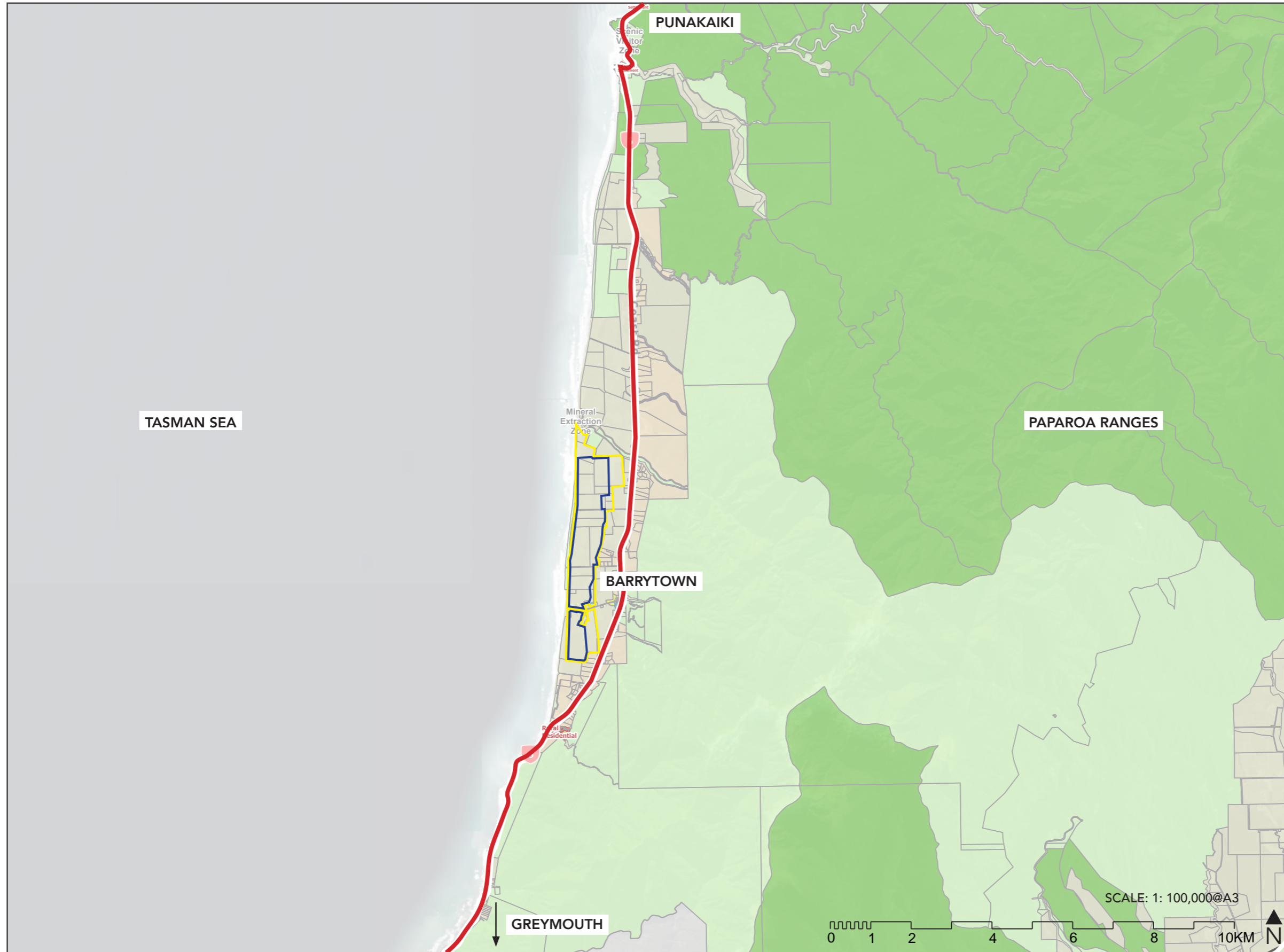
### Note:

The Operative District Plan zoning is rural for the majority of the Barrytown flats area.

The Barrytown hills and Paparoa Ranges are identified as an Outstanding Natural Landscape (ONL) in the text of the District Plan. However this is not illustrated on the planning maps.

**Base map credit:**  
Grey District Council

# 5.0 TE TAI O POUTINI PLAN: PROPOSED ZONING AND DEVELOPMENT AREAS



## KEY

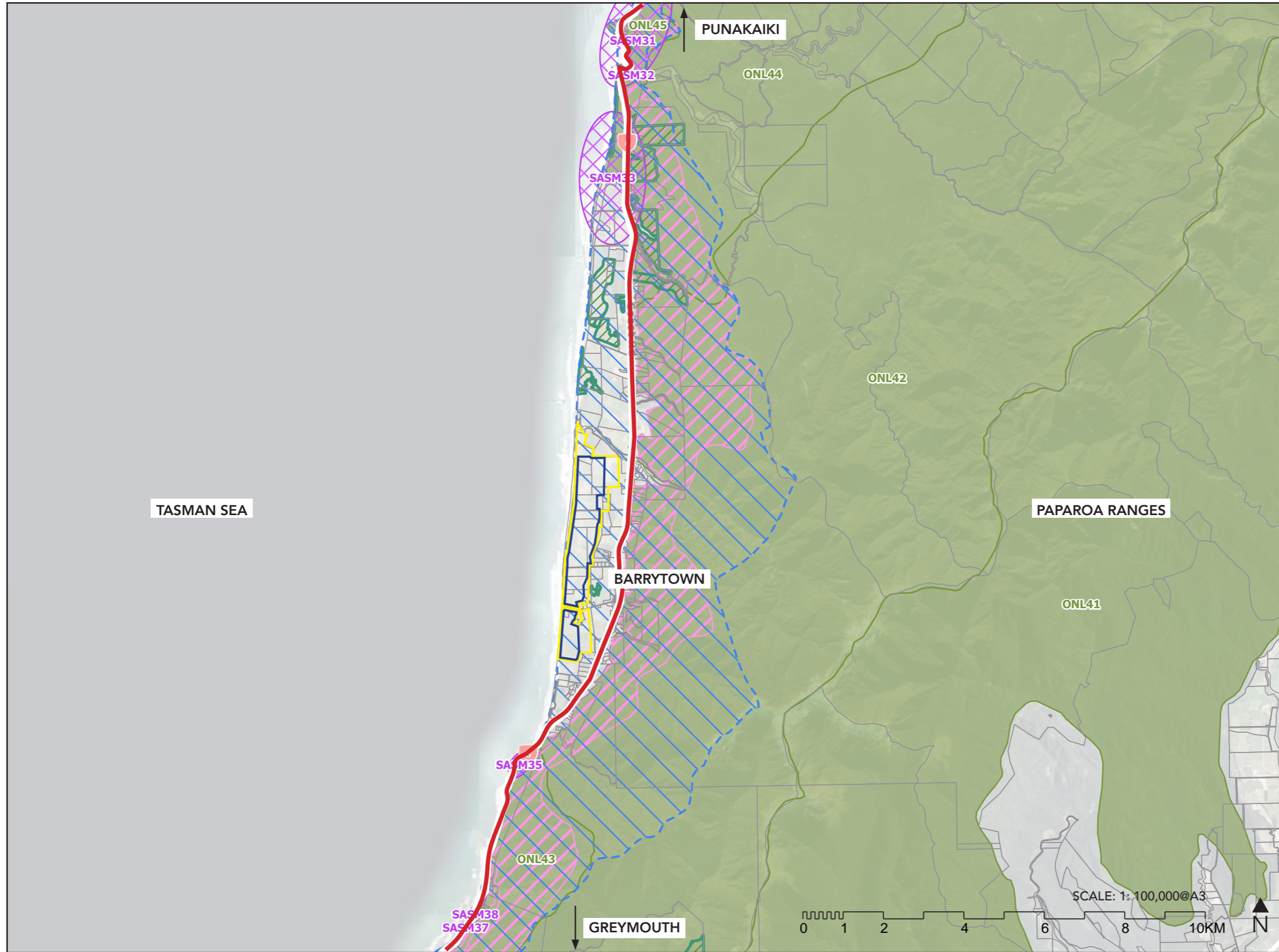
- APPLICATION AREA
- MINING DISTURBANCE AREA
- COAST ROAD/ STATE HIGHWAY 6
- NATURAL OPEN SPACE ZONE
- OPEN SPACE ZONE
- RURAL LIFESTYLE ZONE
- GENERAL RURAL ZONE
- SPECIAL PURPOSE ZONE: MINERAL EXTRACTION ZONE
- SETTLEMENT ZONE

**Note:**  
The Te Tai o Poutini Plan illustrates the application area as being within the General Rural Zone.

The Te Tai o Poutini Plan Decisions Version (TTPP Decision Plan) was publicly notified on the 10 October 2025. This notification formally marked the start of the appeals period which ran until the 24th November 2025.

**Base map credit:**  
Te Tai o Poutini Plan (Decision Plan), Zones and Development Areas Mapbook, Map 39.

# 6.0 TE TAI O POUTINI PLAN: PROPOSED ENVIRONMENTAL AND CULTURAL VALUES



## KEY

- APPLICATION AREA
- - - MINING DISTURBANCE AREA
- COAST ROAD/  
STATE HIGHWAY 6
- OUTSTANDING NATURAL LANDSCAPE
- SITES AND AREAS OF SIGNIFICANCE TO MĀORI
- SIGNIFICANT NATURAL AREAS
- COASTAL ENVIRONMENT
- HIGH COASTAL NATURAL CHARACTER
- OUTSTANDING COASTAL NATURAL CHARACTER

## Note:

The Te Tai o Poutini Plan illustrates that the application area is proposed as being within the coastal environment.

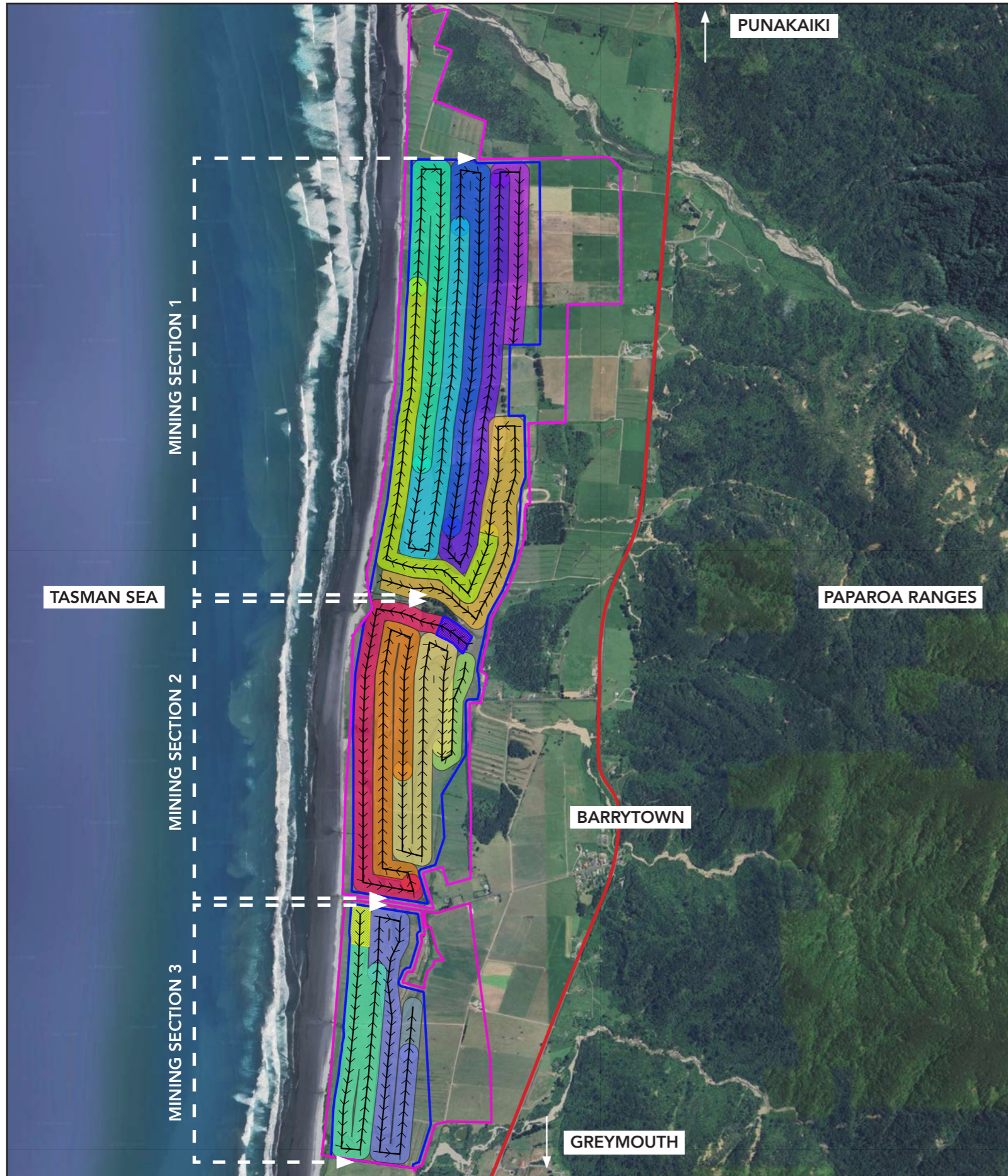
It is adjacent to an area which is an outstanding natural landscape (ONL42) and also has outstanding coastal natural character. There is also a significant natural area (SNA-PUN-049) near the south eastern part of the application area.

The Te Tai o Poutini Plan Decisions Version (TTPP Decision Plan) was publicly notified on the 10 October 2025. This notification formally marked the start of the appeals period which ran until the 24th November 2025.

## Base map credit:

Te Tai o Poutini Plan (Decision Plan), Environmental and Cultural Values Mapbook, Map 39.

# 7.0 INDICATIVE MINING SEQUENCE PLAN



## KEY

- Consent Area
- North South Mine Path
- Year 1 Mine Area
- Year 2 Mine Area
- Year 3 Mine Area
- Year 4 Mine Area
- Year 5 Mine Area
- Year 6 Mine Area
- Year 7 Mine Area
- Year 8 Mine Area
- Year 9 Mine Area
- Year 10 Mine Area
- Year 11 Mine Area
- Year 12 Mine Area
- Year 13 Mine Area
- Year 14 Mine Area
- Starter Pit Cargill Road
- Starter Pit Granite Creek North
- Starter Pit Granite Creek South
- Mining Disturbance Area

### Note:

The Indicative Mining Sequence Plan illustrates the proposed mining sequence from Year 1 to Year 14 of mining. Mining is broken into Sections 1 to 3.

It also includes the locations of the proposed starter pits and the extent of the mining disturbance area (which is within the consent area).

### Base map credit:

Tai Poutini Resources Ltd produced for Taiko (applicant), 12/01/26. Background imagery is from ESRI satellite

## 8.0 CHARACTER IMAGES ILLUSTRATING THE BARRYTOWN ENVIRONMENT



### Key

- 1: Freedom Camping Area at the end of Cargill Road.
- 2: Vehicle and pedestrian access to Pakiroa Beach at the end of Cargill Road.
- 3: View of the Barrytown Flats from SH6 after Seventeen Mile Bluff (approaching Barrytown from the south).
- 4: Spring fed creek exiting onto the coast at Pakiroa Beach.
- 5: Intersection of Coast Road (SH6) and Cargill Road at Barrytown.
- 6: Erosion on Pakiroa Beach and a change in height means views inwards are sometimes restricted.
- 7: Cluster of residents nestled into the hillside at Prospector Place.
- 8: Intersection of Coast Road (SH6) and Warren Road.
- 9: Typical character of residences nestled into the surrounding landscape and vegetation.

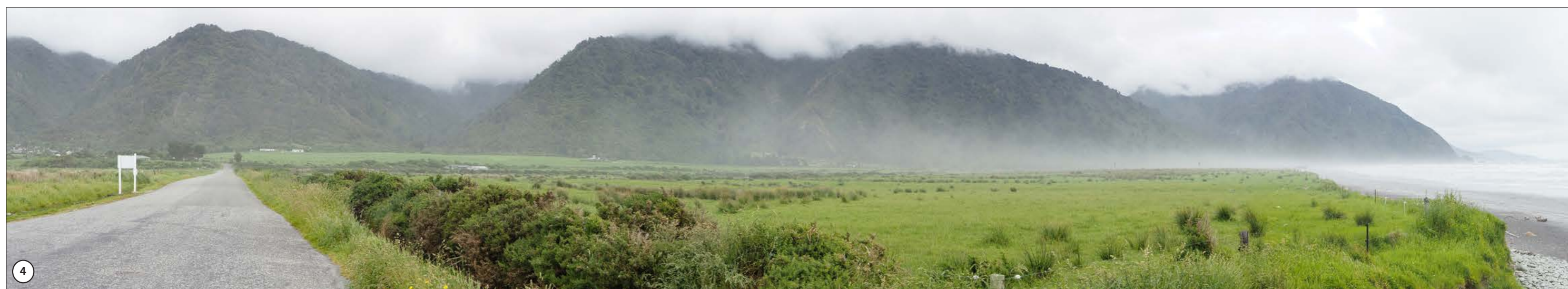
## 9.0 DRONE IMAGES ILLUSTRATING THE MINING AREA



### Key

- 1: Looking north along Pakiroa Beach and the Barrytown Flats. The north-south lines illustrate previous mining dredge passes.
- 2: From the Pakiroa Beach looking back towards the Paparoa Ranges.
- 3: Infrastructure associated with 114 Cargill Road. The top of the mobile phone tower can easily be seen from the beach and surrounding properties.
- 4: Looking north along Pakiroa Beach and the Barrytown Flats. Numerous remnant dredge ponds are on the property, as well as a number of drainage features such as drains, creeks, and springs.
- 5: Where Granite Creek meets the coast.

## 10.0 CHARACTER PANORAMAS ILLUSTRATING THE MINING AREA



### Key

- 1: Existing vegetation in the consent area includes pastoral grass, dotted nikau trees, rushes, gorse, ferns, thistles, and the occasional flax.
- 2: Near the eastern boundary of the Southern Block looking towards an established bund of native regeneration.
- 3: From the Southern Block near the convergence of three streams into (Granite Creek, Little Granite Creek and an un-named farm drain) looking west.
- 4: From the end of Cargill Road near the Freedom Camping Area looking southwest toward the southern most site extent (Section 3 of the Southern Block).

# 11.0 VIEWPOINTS PLAN FOR PANORAMAS FURTHER AFIELD



## KEY:

- APPLICATION AREA
- MINING DISTURBANCE AREA
- COAST ROAD/ STATE HIGHWAY 6
- ↖ **1** PUBLIC VIEWPOINT

Viewpoints shown on this page correspond with the panoramas shown on the following page.

## GPS CO-ORDINATES:

- Public Viewpoint 1:**  
Approaching the Barrytown Flats on SH6  
42°16'42.10"S, 171°17'50.46"E
- Public Viewpoint 2:**  
Pororari Hut, Paparoa Track Great Walk  
42°10'14.88"S, 171°25'30.51"E

## Further Afield



### Viewpoint 1: Approaching the Barrytown Flats on State Highway 6

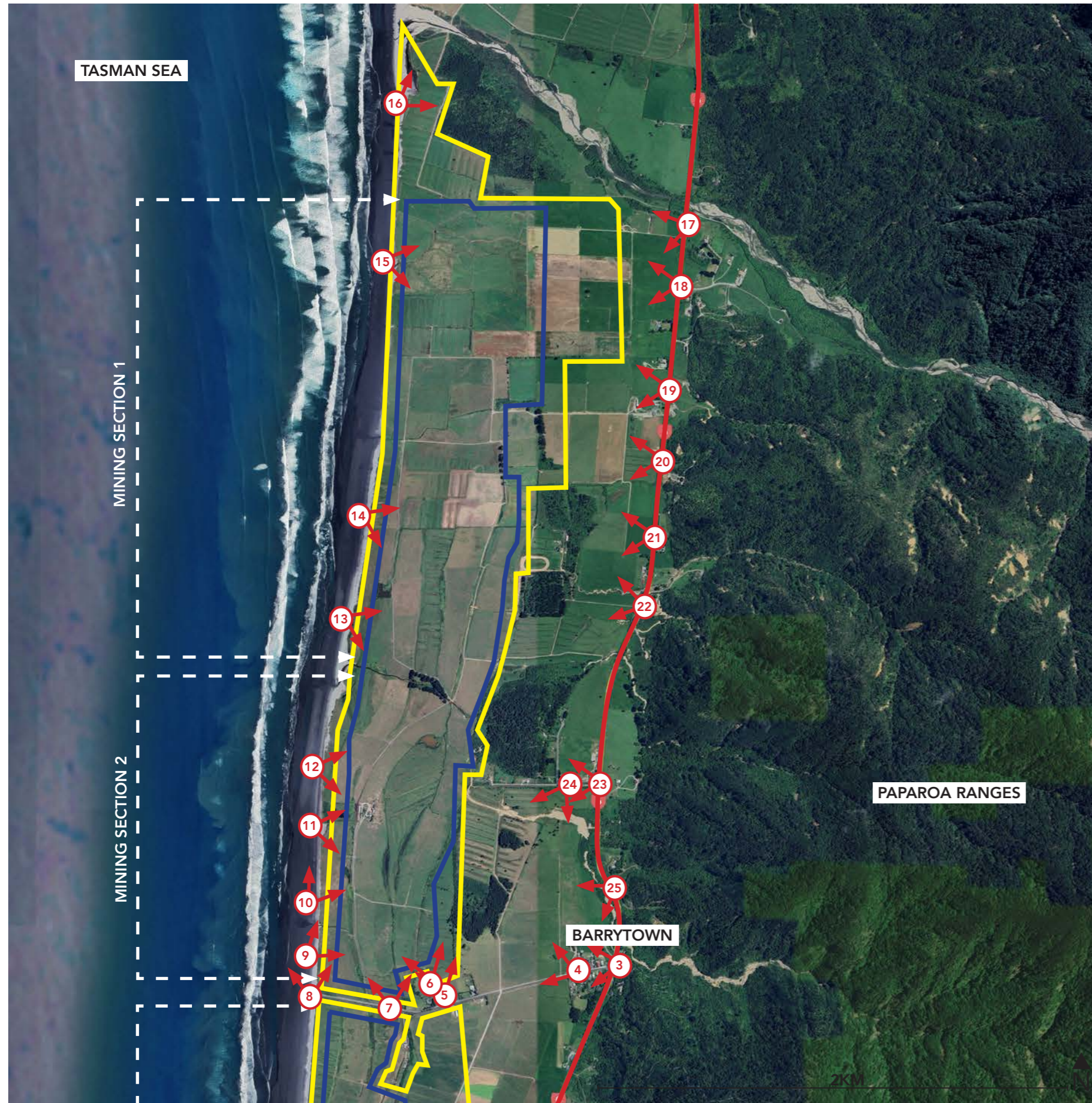
Panoramic view from SH6 after Seventeen Mile Bluff. The viewpoint is looking in a north easterly direction towards the Barrytown flats with the Paparoa Ranges in the distance. Taken on the 22nd May 2024 with an OM System OM-5 camera with a 25mm lens (equivalent to a 50mm focal length). This is a public viewpoint.



### Viewpoint 2: Pororai Hut, Paparoa Ranges Great Walk

Panoramic view from outside the Pororai Hut, which is part of the Paparoa Track Great Walk in the Paparoa Ranges. The viewpoint is looking towards the Barrytown flats with the Tasman Sea in the distance. Taken on the 3rd November 2024 with an iPhone16+ camera set to a 50mm focal length. This is a public viewpoint.

# 12.0 VIEWPOINTS PLAN FOR MINING SECTIONS 1 AND 2



## GPS CO-ORDINATES:

- Public Viewpoint 3:**  
Barrytown Township  
42°14'38.12"S, 171°19'35.56"E
- Public Viewpoint 4:**  
Opposite Barrytown School (North)  
42°14'38.12"S, 171°19'35.56"E
- Public Viewpoint 5:**  
Barrytown Cemetery  
42°14'44.17"S, 171°19'0.24"E
- Public Viewpoint 6:**  
Barrytown Cemetery (North)  
42°14'43.28"S, 171°18'59.27"E
- Public Viewpoint 7:**  
Cargill Road (North)  
42°14'44.70"S, 171°18'49.85"E
- Public Viewpoint 8:**  
Cargill Road Freedom Camping Area (North)  
42°14'42.61"S, 171°18'34.63"E
- Public Viewpoint 9:**  
Pakiroa Beach in front of the Camping Area  
42°14'42.20"S, 171°18'33.70"E
- Public Viewpoint 10:**  
Pakiroa Beach Edge of Rocks and Sand  
42°14'31.07"S, 171°18'34.75"E
- Public Viewpoint 11:**  
Pakiroa Beach in front of 114 Cargill Road  
42°14'20.47"S, 171°18'34.39"E
- Public Viewpoint 12:**  
Pakiroa Beach  
42°14'10.26"S, 171°18'35.41"E
- Public Viewpoint 13:**  
Pakiroa Beach (Centre)  
42°13'46.48"S, 171°18'41.09"E
- Public Viewpoint 14:**  
Pakiroa Beach and the Barrytown Flats  
42°13'31.48"S, 171°18'45.31"E
- Public Viewpoint 15:**  
Pakiroa Beach (Opposite Prospector Place)  
42°12'51.06"S, 171°18'50.22"E
- Public Viewpoint 16:**  
Pakiroa Beach (Northern End)  
42°12'29.57"S, 171°18'52.15"E

## KEY:

- APPLICATION AREA
- MINING DISTURBANCE AREA
- COAST ROAD/ STATE HIGHWAY 6
- PUBLIC VIEWPOINT

Viewpoints on this page correspond with the panoramas shown on the following page.

- Public Viewpoint 17:**  
Coast Road/SH6 South of Canoe Creek  
42°12'46.56"S, 171°19'50.14"E
- Public Viewpoint 18:**  
Coast Road/SH6 in front of Prospector Place,  
42°12'55.58"S, 171°19'48.98"E
- Public Viewpoint 19:**  
Coast Road/SH6 near 3067 Coast Road  
42°13'11.95"S, 171°19'46.69"E
- Public Viewpoint 20:**  
Coast Road/SH6 near 3010 Coast Road  
42°13'22.35"S, 171°19'45.27"E
- Public Viewpoint 21:**  
Coast Road/SH6 near 2998 Coast Road  
42°13'34.07"S, 171°19'43.71"E
- Public Viewpoint 22:**  
Coast Road/SH6 near 2975 Coast Road  
42°13'44.73"S, 171°19'41.07"E
- Public Viewpoint 23:**  
Coast Road/SH6 and Warren Road  
42°14'10.90"S, 171°19'32.63"E
- Public Viewpoint 24:**  
Warren Road  
42°14'11.02"S, 171°19'26.36"E
- Public Viewpoint 25:**  
Coast Road/SH6 north of Township  
42°14'27.07"S, 171°19'35.81"E

# Barrytown Township



## Viewpoint 3: Barrytown Township

Panoramic view from the intersection of Coast Road (SH6) and Cargill Road. The viewpoint is looking in a westerly direction down Cargill Road towards the mining area, which continues on either side of the road parallel with the coast. Taken on the 23rd May 2024 with an OM System OM-5 camera with a 25mm lens (equivalent to a 50mm focal length). This is a public viewpoint.



## Viewpoint 4: Opposite Barrytown School (North)

Panoramic view from opposite Barrytown School (which is just out of view to the left hand side of the image). The viewpoint is looking in a westerly direction down Cargill Road towards the mining area (as indicated). Taken on the 23rd May 2024 with an OM System OM-5 camera with a 25mm lens (equivalent to a 50mm focal length). This is a public viewpoint.

## Barrytown Cemetery (North)



### Viewpoint 5: Barrytown Cemetery

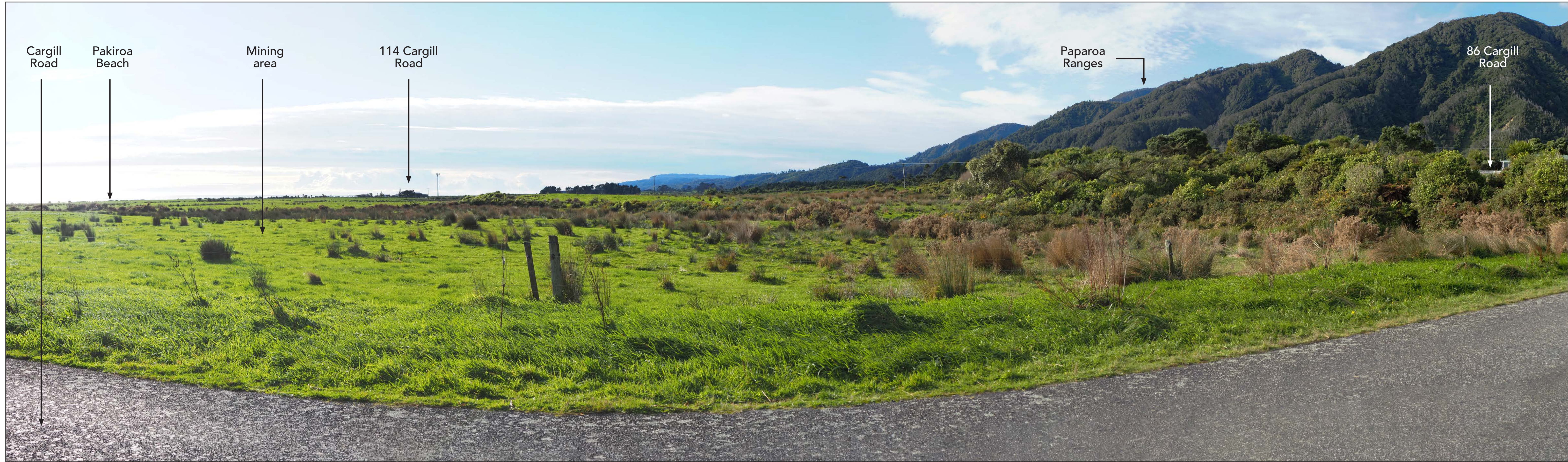
Panoramic view from within the Barrytown Cemetery. The viewpoint is looking in a northerly direction towards the site. Taken on the 23rd May 2024 with an OM System OM-5 camera with a 25mm lens (equivalent to a 50mm focal length). This is a public viewpoint.



### Viewpoint 6: Barrytown Cemetery (North)

Panoramic view from the northern boundary of the Barrytown Cemetery. The viewpoint is looking in a northerly direction across the mining area. Taken on the 23rd May 2024 with an OM System OM-5 camera with a 25mm lens (equivalent to a 50mm focal length). This is a public viewpoint.

## Cargill Road (North)



### Viewpoint 7: Cargill Road (North)

Panoramic view from two third's of the way along Cargill Road. The viewpoint is looking in a northerly direction towards the mining area which is setback 20m from Cargill Road. Taken on the 22nd May 2024 with an OM System OM-5 camera with a 25mm lens (equivalent to a 50mm focal length). This is a public viewpoint.



### Viewpoint 8: Cargill Road Freedom Camping Area (North)

Panoramic view from the Freedom Camping Area at the western end of Cargill Road. The viewpoint is looking in a northerly direction across the mining area. Taken on the 22nd May 2024 with an OM System OM-5 camera with a 25mm lens (equivalent to a 50mm focal length). This is a public viewpoint.

# Pakiroa Beach (Near Freedom Camping Area)



## Viewpoint 9: Pakiroa Beach in front of the Freedom Camping Area

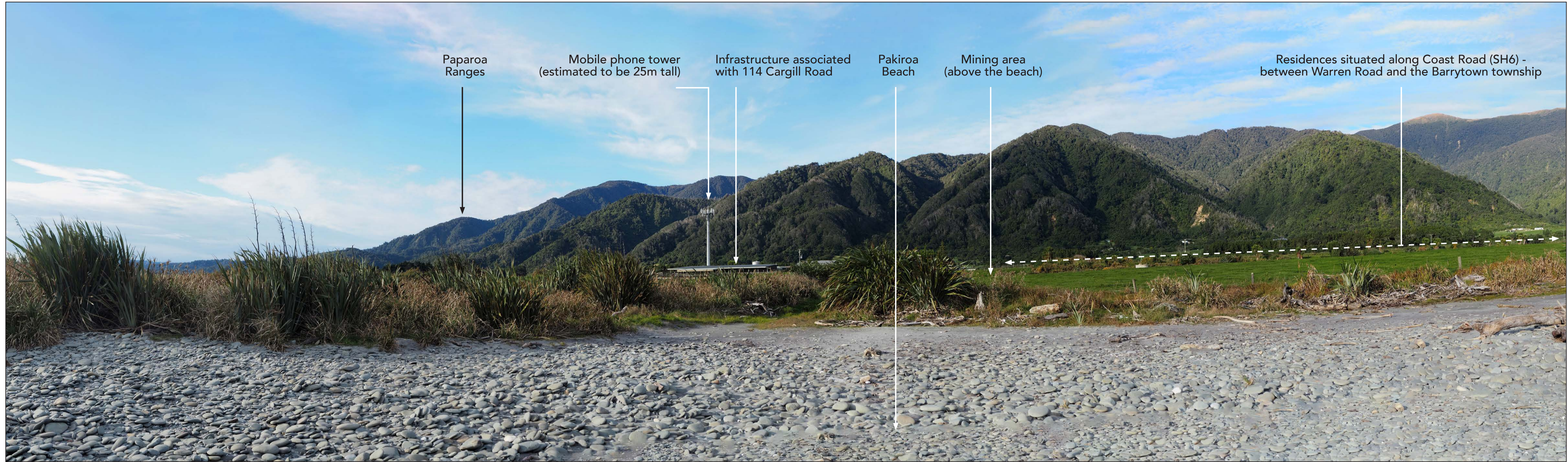
Panoramic view from Pakiroa Beach, in front of the Freedom Camping Area at the end of Cargill Road. The viewpoint is looking in a north easterly direction towards the site behind the beach. Taken on the 22nd May 2024 with an OM System OM-5 camera with a 25mm lens (equivalent to a 50mm focal length). This is a public viewpoint.



## Viewpoint 10: Pakiroa Beach Edge of the Rocks and Sand

Panoramic view from Pakiroa Beach, between the sand and the rocky escarpment. The viewpoint is looking in a north easterly direction towards the mining area, setback behind the beach. Taken on the 22nd May 2024 with an OM System OM-5 camera with a 25mm lens (equivalent to a 50mm focal length). This is a public viewpoint.

## Pakiroa Beach (South)



### Viewpoint 11: Paparua Beach in front of 114 Cargill Road

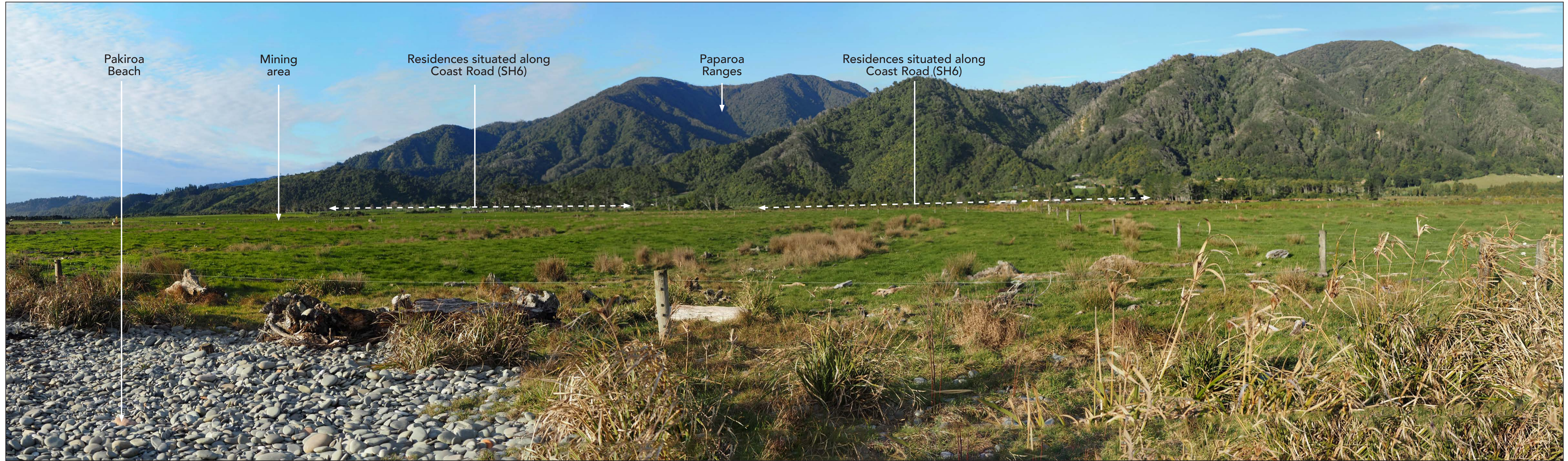
Panoramic view from Pakiroa Beach in front of 114 Cargill Road. The viewpoint is looking in an easterly direction towards the mining area which is setback behind the beach, with the residences beyond. Taken on the 22nd May 2024 with an OM System OM-5 camera with a 25mm lens (equivalent to a 50mm focal length). This is a public viewpoint.



### Viewpoint 12: Pakiroa Beach

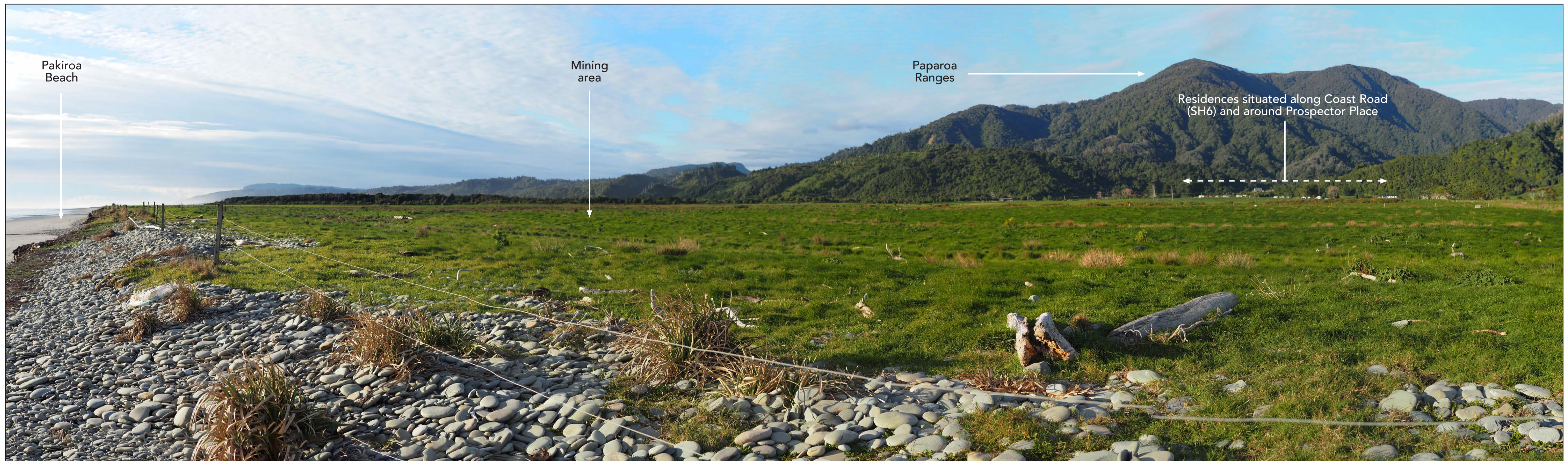
Panoramic view from Pakiroa Beach. The viewpoint is looking in an easterly direction towards the mining area which from this viewpoint is screened by foreground vegetation. Taken on the 22nd May 2024 with an OM System OM-5 camera with a 25mm lens (equivalent to a 50mm focal length). This is a public viewpoint.

## Pakiroa Beach (Centre)



### Viewpoint 13: Pakiroa Beach (Centre)

Panoramic view from the very edge of Pakiroa Beach. The viewpoint is looking in a north easterly direction towards the mining area setback behind the beach, and in front of Coast Road (SH6) and residences beyond. Taken on the 22nd May 2024 with an OM System OM-5 camera with a 25mm lens (equivalent to a 50mm focal length). This is a public viewpoint.



### Viewpoint 14: Pakiroa Beach and the Expansive Barrytown Flats

Panoramic view from the very edge of Pakiroa Beach. The viewpoint is looking in a northerly direction across the mining area with the ranges in the distance. Taken on the 22nd May 2024 with an OM System OM-5 camera with a 25mm lens (equivalent to a 50mm focal length). This is a public viewpoint.

## Pakiroa Beach (Northern End)



### Viewpoint 15: Pakiroa Beach (Opposite Prospector Place)

Panoramic view from Pakiroa Beach. The viewpoint is looking in an easterly direction towards the mining area with the residences of Prospector Place and Coast Road (SH6) in the distance. Taken on the 22nd May 2024 with an OM System OM-5 camera with a 25mm lens (equivalent to a 50mm focal length). This is a public viewpoint.



### Viewpoint 16: Pakiroa Beach (Northern End)

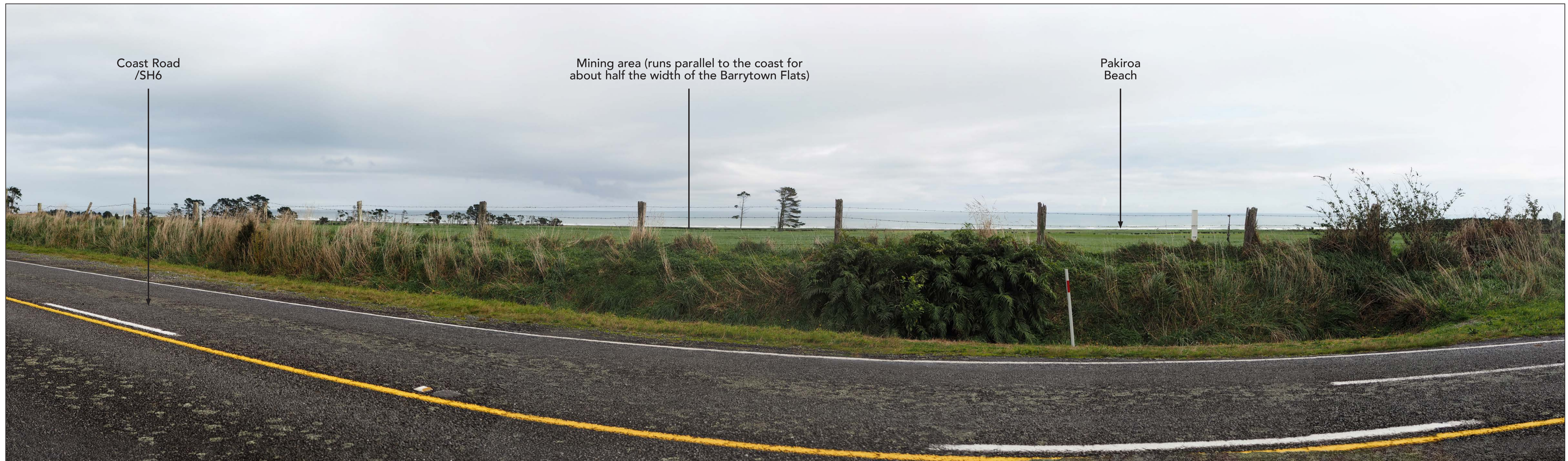
Panoramic view from the western edge of the mining area. The viewpoint is looking in a north easterly direction across the north western corner of the mining area. Taken on the 22nd May 2024 with an OM System OM-5 camera with a 25mm lens (equivalent to a 50mm focal length). This is a public viewpoint.

## Coast Road/SH6 (Northern End)



### Viewpoint 17: Coast Road/SH6 south of Canoe Creek

Panoramic view from Coast Road/SH6 south of the Canoe Creek bridge. The viewpoint is looking in a westerly direction, with the northern part of the mining area in the distance. Taken on the 23rd May 2024 with an OM System OM-5 camera with a 25mm lens (equivalent to a 50mm focal length). This is a public viewpoint.



### Viewpoint 18: Coast Road/SH6 in front of Prospector Place

Panoramic view from Coast Road/SH6 in front of the entrance to Prospector Place. The viewpoint is looking in a westerly direction, with the northern part of the mining area in the distance. Taken on the 23rd May 2024 with an OM System OM-5 camera with a 25mm lens (equivalent to a 50mm focal length). This is a public viewpoint.

# Coast Road/SH6 (Northern End)



## Viewpoint 19: Coast Road/SH6 near 3067 Coast Road

Panoramic view from Coast Road/SH6 from near 3067 Coast Road. The viewpoint is looking in a westerly direction towards the mining area, which runs parallel to the coast for about half the width of the Barrytown flats. Taken on the 23rd May 2024 with an OM System OM-5 camera with a 25mm lens (equivalent to a 50mm focal length). This is a public viewpoint.



## Viewpoint 20: Coast Road/SH6 near 3010 Coast Road

Panoramic view from the Coast Road/SH6 near 3010 Coast Road. The viewpoint is looking in a westerly direction across the humped and hollowed landscape towards the mining area. The site runs parallel to the coast for about half the width of the Barrytown Flats. Taken on the 23rd May 2024 with an OM System OM-5 camera with a 25mm lens (equivalent to a 50mm focal length). This is a public viewpoint.

## Coast Road/SH6 (Centre)



### Viewpoint 21: Coast Road/SH6 near 2998 Coast Road

Panoramic view from Coast Road / SH6 near 2998 Coast Road on the rise on the hill when traveling south. The viewpoint is looking in a westerly direction towards the mining area in the distance (beyond the foreground and mid ground vegetation). Taken on the 23rd May 2024 with an OM System OM-5 camera with a 25mm lens (equivalent to a 50mm focal length). This is a public viewpoint.



### Viewpoint 22: Coast Road/SH6 near 2975 Coast Road

Panoramic view from Coast Road/SH6 near 2975 Coast Road. The viewpoint is looking in a westerly direction towards the mining area in the distance which runs parallel to the coast. Taken on the 23rd May 2024 with an OM System OM-5 camera with a 25mm lens (equivalent to a 50mm focal length). This is a public viewpoint.

# Warren Road



## Viewpoint 23: Intersection of Coast Road/SH6 and Warren Road

Panoramic view from the intersection of Coast Road/SH6 and Warren Road. The viewpoint is looking in a westerly direction down Warren Road with the mining area in the distance. Warren Road is home to a number of residences and does not provide access to the beach or to the site. Taken on the 23rd May 2024 with an OM System OM-5 camera with a 25mm lens (equivalent to a 50mm focal length). This is a public viewpoint.



## Viewpoint 24: Warren Road

Panoramic view from Warren Road. The viewpoint is looking in a south westerly direction towards the mining area in the distance. Taken on the 23rd May 2024 with an OM System OM-5 camera with a 25mm lens (equivalent to a 50mm focal length). This is a public viewpoint.

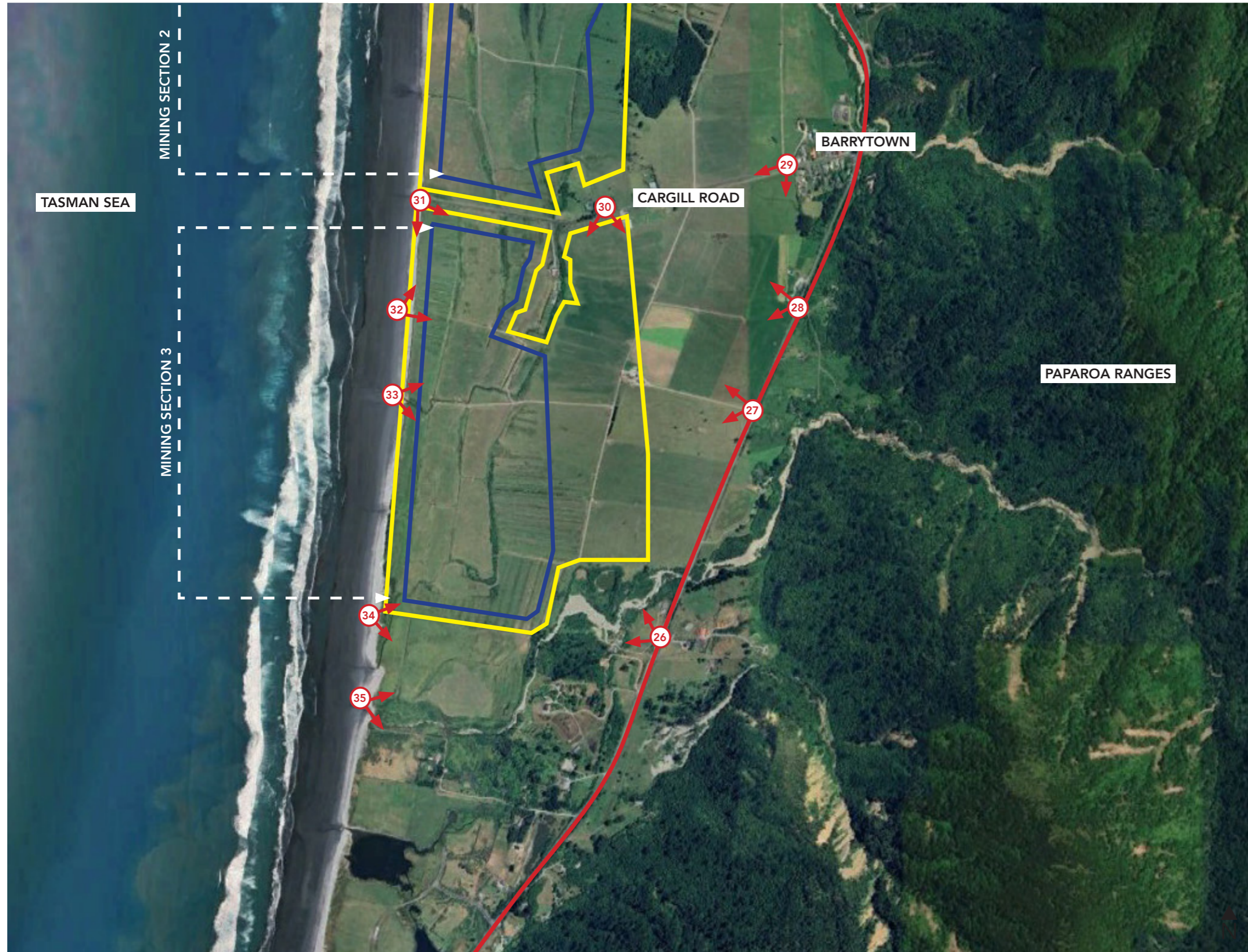
# Coast Road/SH6 (Near Barrytown Township)



## Viewpoint 25: Coast Road/SH6 north of Barrytown Township

Panoramic view from Coast Road/SH6. The viewpoint is looking in a westerly direction, although the mining area and the sea are not visible from this location. Taken on the 23rd May 2024 with an OM System OM-5 camera with a 25mm lens (equivalent to a 50mm focal length). This is a public viewpoint.

# 13.0 VIEWPOINTS PLAN FOR MINING SECTION 3



## KEY:

- APPLICATION AREA
  - MINING DISTURBANCE AREA
  - COAST ROAD/ STATE HIGHWAY 6
  - PUBLIC VIEWPOINT
- Viewpoints shown on this page correspond with the panoramas shown on the following page.

## GPS CO-ORDINATES:

- Public Viewpoint 26:**  
Coast Road/SH6 near 2623 Coast Road  
42°15'27.87"S, 171°19'7.24"E
- Public Viewpoint 27:**  
Coast Road/SH6 near 2706 Coast Road  
42°15'4.83"S, 171°19'20.30"E
- Public Viewpoint 28:**  
Coast Road/SH6 south of Township  
42°14'57.49"S, 171°19'24.93"E
- Public Viewpoint 29:**  
Opposite Barrytown School (South)  
42°14'38.12"S, 171°19'35.56"E
- Public Viewpoint 30:**  
Barrytown Cemetery (South)  
42°14'44.17"S, 171°19'0.24"E
- Public Viewpoint 31:**  
Cargill Road Freedom Camping (South)  
42°14'42.61"S, 171°18'34.63"E
- Public Viewpoint 32:**  
Pakiroa Beach Escarpment  
42°14'54.72"S, 171°18'32.89"E
- Public Viewpoint 33:**  
Pakiroa Beach Flax  
42°15'22.24"S, 171°18'28.03"E
- Public Viewpoint 34:**  
Pakiroa Beach (South)  
42°15'32.72"S, 171°18'27.59"E
- Public Viewpoint 35:**  
Fagans Creek  
42°15'34.65"S, 171°18'26.77"E

## Coast Road/SH6 (Southern End)



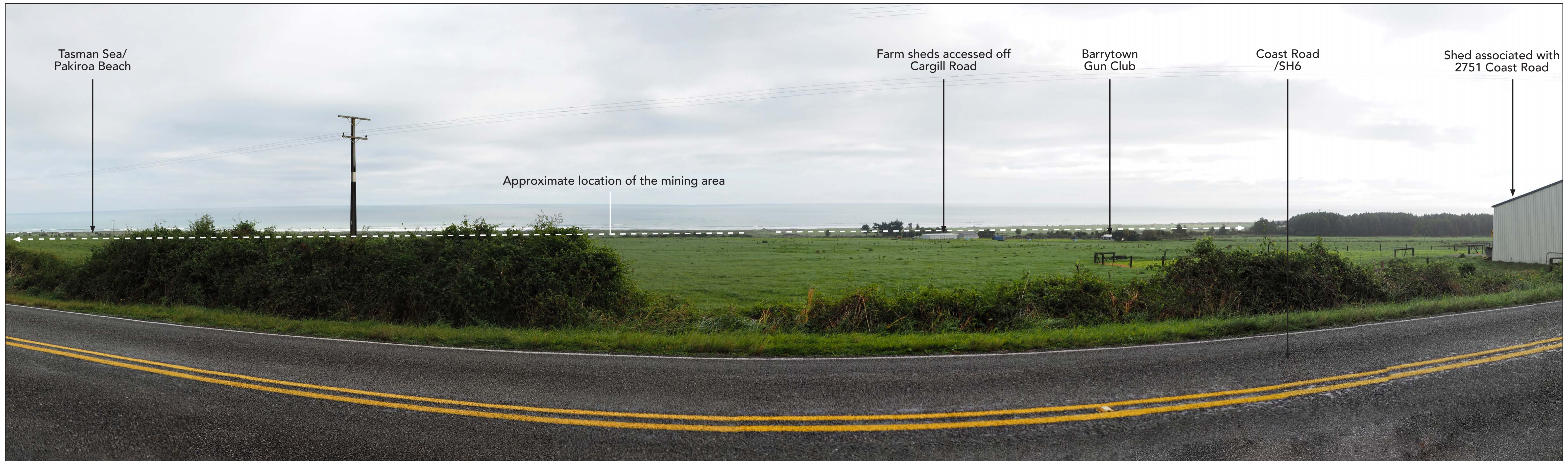
### Viewpoint 26: Coast Road/SH6 near 2623 Coast Road

Panoramic view from near 2623 Coast Road/SH6. The viewpoint is looking in a westerly direction towards the mining area in the distance, which runs parallel to the coast. Taken on the 6th December 2024 with an OM System OM-5 camera with a 25mm lens (equivalent to a 50mm focal length). This is a public viewpoint.



### Viewpoint 27: Coast Road/SH6 near 2706 Coast Road

Panoramic view from near 2706 Coast Road/SH6. The viewpoint is looking in a westerly direction down the existing farm access road towards the mining area in the distance, which runs parallel to the coast. Taken on the 6th December 2024 with an OM System OM-5 camera with a 25mm lens (equivalent to a 50mm focal length). This is a public viewpoint.



**Viewpoint 28: Coast Road/SH6 south of Barrytown Township**

Panoramic view from Coast Road/SH6 south of the Barrytown Township. The viewpoint is looking in a westerly direction towards the mining area in the distance, which runs parallel to the coast. Taken on the 6th December 2024 with an OM System OM-5 camera with a 25mm lens (equivalent to a 50mm focal length). This is a public viewpoint.

**Cargill Road (South)**



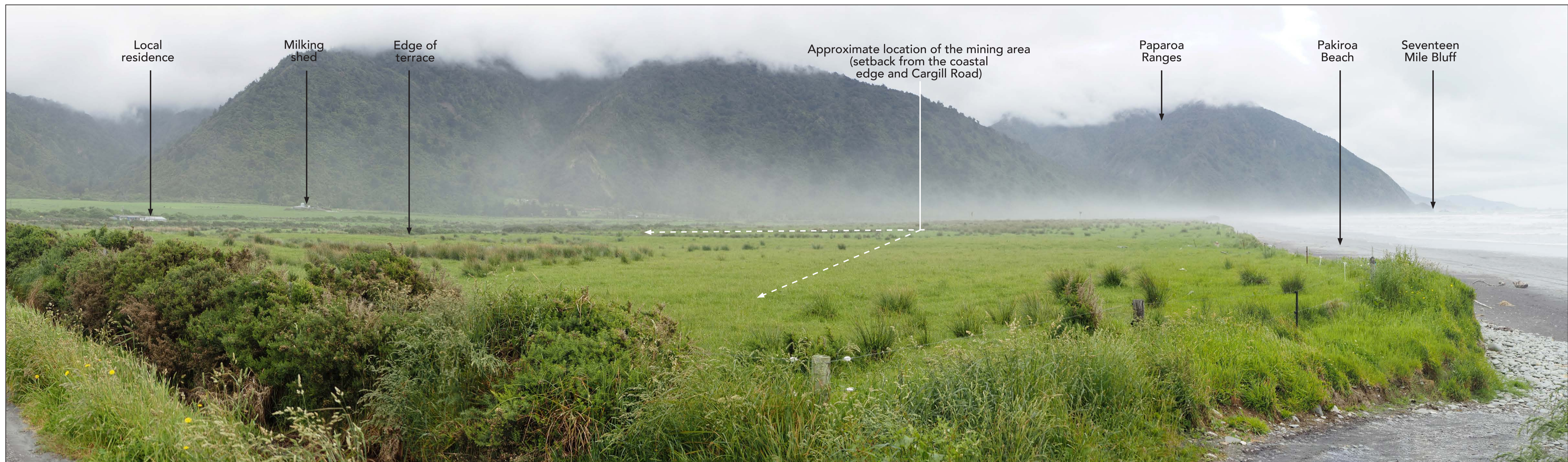
**Viewpoint 29: Opposite Barrytown School (South)**

Panoramic view from Cargill Road, just northwest of Barrytown School. The viewpoint is looking in a south westerly direction towards the mining area in the distance, which runs parallel to the coast. Taken on the 6th December 2024 with an OM System OM-5 camera with a 25mm lens (equivalent to a 50mm focal length). This is a public viewpoint.



**Viewpoint 30: Barrytown Cemetery (South)**

Panoramic view from outside the Barrytown Cemetery entrance. The viewpoint is looking in a southerly direction towards the mining area across Cargill Road. Taken on the 6th December 2024 with an OM System OM-5 camera with a 25mm lens (equivalent to a 50mm focal length). This is a public viewpoint.



**Viewpoint 31: Cargill Road Freedom Camping (South)**

Panoramic view from the Cargill Road Freedom Camping Area and beach access. The viewpoint is looking in a south easterly direction towards the mining area. Taken on the 6th December 2024 with an OM System OM-5 camera with a 25mm lens (equivalent to a 50mm focal length). This is a public viewpoint.

## Pakiroa Beach (Southern End)



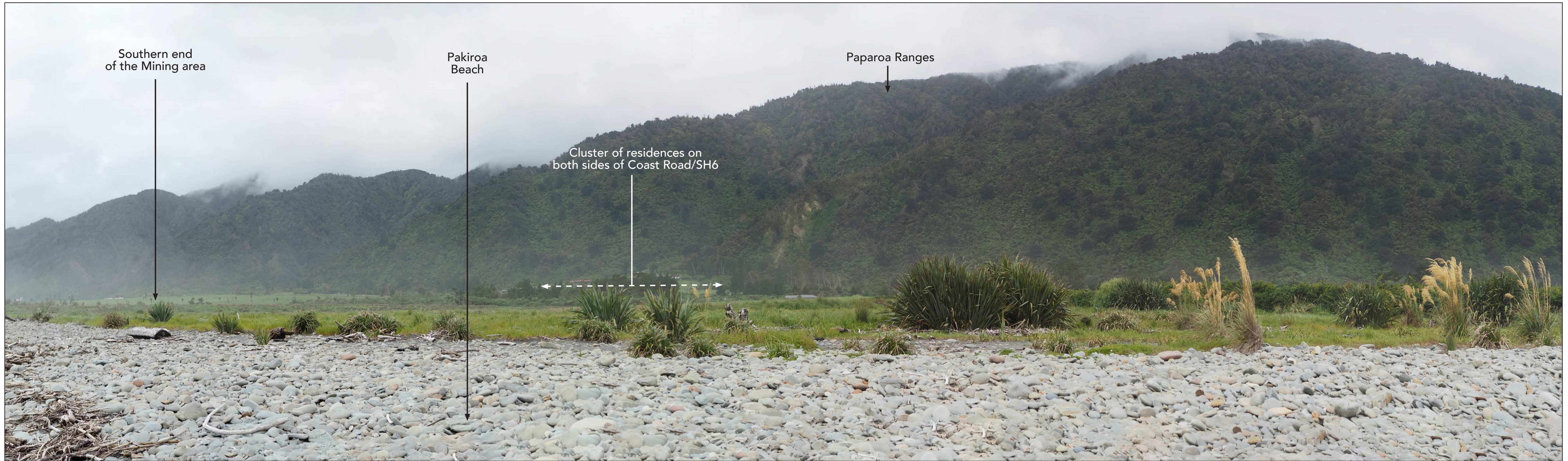
### Viewpoint 32: Pakiroa Beach Escarpment

Panoramic view from Pakiroa Beach (south of the Cargill Road Freedom Camping Area). The viewpoint is looking in a north easterly direction towards the mining area. There are occasional places where the escarpment wall has collapsed or been eroded out. Taken on the 6th December 2024 with an OM System OM-5 camera with a 25mm lens (equivalent to a 50mm focal length). This is a public viewpoint.



### Viewpoint 33: Pakiroa Beach Flax

Panoramic view from the southern end of Pakiroa Beach. The viewpoint is looking in a north easterly direction towards the mining area, which is not visible from this location due to the change in height between the viewer and the farmland. Taken on the 6th December 2024 with an OM System OM-5 camera with a 25mm lens (equivalent to a 50mm focal length). This is a public viewpoint.



### Viewpoint 34: Pakiroa Beach (South)

Panoramic view from the southern end of Pakiroa Beach. The viewpoint is looking in an easterly direction towards the southern end of the mining area. Taken on the 6th December 2024 with an OM System OM-5 camera with a 25mm lens (equivalent to a 50mm focal length). This is a public viewpoint.



### Viewpoint 35: Fagans Creek

Panoramic view from where Fagans Creek connects with the coast. The viewpoint is looking in a south easterly direction down the coast. On the day of the site visit, the vehicle/pedestrian track near Fagans Creek, which connects residents to the southern end of the beach, was heavily rutted, flooded and impassable. Taken on the 6th December 2024 with an OM System OM-5 camera with a 25mm lens (equivalent to a 50mm focal length). This is a public viewpoint.

# 14.0 VIEWPOINT CLUSTERS



### KEY:

- APPLICATION AREA
- MINING DISTURBANCE AREA
- COAST ROAD/STATE HIGHWAY 6
- VIEWPOINT CLUSTERS (BOUNDARIES INDICATIVE ONLY)

### VIEWPOINT CLUSTERS:

**Note:** Viewpoint clusters shown on this page correspond with the different areas assessed within the Visual Assessment section of the Landscape and Visual Assessment. Breaking down the area into smaller areas assists with assessing the effects of such a large consent area.

- 1** FURTHER AFIELD - WIDER ENVIRONMENT  
Viewpoint 1
- 2** BARRYTOWN TOWNSHIP  
Viewpoints 3 and 4
- 3** CARGILL ROAD, CEMETERY AND FREEDOM CAMPING AREA  
Viewpoints 5-8 and 29-31
- 4** PAKIROA BEACH  
Viewpoints 9-16 and 32-34
- 5** CANOE CREEK
- 6** PROSPECTOR PLACE/SH6 (NORTH)  
Viewpoints 17-19
- 7** SH6 (CENTRE) AND RESIDENTS  
Viewpoints 20-22
- 8** WARREN ROAD AND BUSH NORTH  
Viewpoints 23 and 24
- 9** COAST ROAD/SH6  
Viewpoints 25
- 10** COAST ROAD/SH6 (SOUTH)  
Viewpoints 26-28
- 11** FAGANS CREEK RESIDENTS  
Viewpoint 35
- 12** CROESUS TRACK AND PAPAROA RANGES  
Viewpoint 2



SCALE: As Illustrated

2KM

