

CENTRAL OTAGO DISTRICT COUNCIL

UNDER Fast Track Approvals Act (FTAA) (2025)
IN THE MATTER of the Bendigo-Ophir Gold Project application by
Matakanui Gold Limited

STATEMENT OF EVIDENCE OF CHRISTOPHER GREGG JENNINGS
8 April 2026

Introduction

- 1 My name is Christopher Gregg Jennings.
- 2 I am a Senior Archaeologist at Origin Consultants Ltd (trading as Origin Heritage) an Arrowtown and Dunedin-based practice specialising in heritage architecture, heritage conservation, building surveying, and archaeology.
- 3 I have been asked to provide evidence by Central Otago District Council (**CODC**).
- 4 I became involved in the Bendigo-Ophir Gold Project (BOGP) in June 2025, when Origin Consultants Ltd (**Origin Heritage**) was asked to undertake a review of the BOGP 2025 heritage assessment and associated heritage documents prepared for Matakanui Gold Limited (MGL) by New Zealand Heritage Properties (NZHP).

Qualifications and Experience

- 5 I have a BA and MA degree in Anthropology (focusing on Archaeology) from the University of Otago, and a PhD (focusing on Archaeology) from the University of Queensland.
- 6 I am a full member of the New Zealand Archaeological Association and currently serve as its president.

Code of Conduct

- 7 Although I acknowledge that the Fast Track Approvals Act process is not a proceeding of the Environment Court, I have read the Code of Conduct for expert witnesses contained in the Environment Court Practice Note 2023. I have prepared this document in line with the Code of Conduct.

Scope of Evidence

- 8 My evidence addresses the following:
 - (a) My review of NZHP heritage report documents, including those provided to CODC by MGL prior to lodgement, reports and correspondence made available for review after the completeness check, and reports updated after the Heritage Workshop held in Cromwell on 16 February 2026.

- (b) The purpose of these review was to identify any potential deficiencies in the heritage approach, and provide CODC with an understanding of heritage considerations related to the project.
- (c) This document provides a summary of my initial review of the BOGP approach to archaeology and heritage management (Jennings 2025)¹, with updated considerations based on information provided after it was submitted to the CODC on 2 September 2025.

Executive Summary

- 9 Matakanui Gold Limited (MGL)/Santana Minerals Ltd (the Applicant) proposes to establish a major gold mine within the Bendigo-Ophir Gold Project (BOGP) area.
- 10 The BOGP is located in an area recognised for its significant heritage values, demonstrated by the Bendigo Station Conservation Covenant, the Bendigo Quartz Reefs Historic Area, and numerous recorded archaeological sites. The Applicant seeks to uplift part of this covenant to allow for the destruction of sites affected by the BOGP.
- 11 A Heritage Assessment was prepared in 2025 by New Zealand Heritage Properties (NZHP) to assess the heritage values, evaluate the effects of the BOGP on these values and recommend measures to protect sites or mitigate damage. This assessment was revised in 2026.
- 12 The intention of my evidence is to provide a concise review of the archaeology and heritage management related to the BOGP and key concerns, which have not been adequately addressed.
- 13 There are issues in the report related to deficiencies in the archaeological surveys undertaken, the approach to evaluating heritage values and significance, the assessment of effects on heritage values and the management recommendations proposed.
- 14 I have included recommendations for conditions that the CODC may reasonably impose commensurate to the scale of the project and in line

¹ Jennings, 2025. Bendigo-Ophir Gold Project: Peer-review of heritage assessment and associated technical reports. Report to Central Otago District Council. Origin Heritage.

with the council's responsibilities under Section 6(f) of the Resource Management Act (RMA) 1991.

Context of the Project Area

- 15 Matakanui Gold Limited (MGL), a wholly owned subsidiary of Santana Minerals Ltd (Santana), proposes to establish a gold mine within the Bendigo-Ophir Gold Project (BOGP) area, situated on the Bendigo and Ardour Stations in the Dunstan Mountains of Central Otago. The project will include three open-cut mining areas, ancillary facilities, and associated infrastructure.
- 16 A large portion of the BOGP area (including all three open-cut mine pits) is located within the Bendigo Covenant, which was set up in August 2000 under the Reserves Act 1977 to manage the conservation of the natural character of the land, protect its ecological character and maintain the landscape and its historic values. Part of the project area also falls within the Bendigo Quartz Reefs (BQR) Historic Area, listed as no. 9097 on the New Zealand Heritage List Rārangī Kōrero (APPENDIX 1).
- 17 Numerous archaeological sites have been recorded throughout the Bendigo area, primarily associated with gold mining from the mid-1860s onwards, but also with the earlier and concurrent operation of the Morven Hills Station.

Review of NZHP Reports

- 18 Archaeological and Heritage work for the BOGP began in 2017, when MGL commissioned NZHP to undertake surveys for exploration-related activities in the project area. Multiple archaeological and heritage surveys were conducted by NZHP through to 2025 (See APPENDIX 2). The results of these reports were compiled and detailed in the Bendigo-Ophir Gold Project: A Heritage Assessment (Woods and Thorrold 2025).
- 19 Prior to FTAA lodgement, the Woods and Thorrold (2025) report and an Archaeological and Heritage Management Plan (2025) were provided to CODC for review purposes, along with other reports to advise on other activities (See APPENDIX 2A).
- 20 During the preparation of my first review of the project, I attended a site visit on 28 July 2025. I submitted my first review report to CODC on 2 September 2025 (Jennings, 2025).

- 21 During the preparation of the current evidence, other relevant documents were considered or were made available and reviewed. These are listed APPENDIX 2B and included:
- (a) responses to completeness checks from NZHP on behalf of MGL to CODC and HNZPT.
 - (b) other non-heritage specific reports provided by MGL technical experts.
 - (c) a review of the Woods and Thorrold (2025) report undertaken by Dr Neville Ritchie on behalf of DOC.
 - (d) A revised and updated version of the BOGP Heritage Assessment (Woods and Thorrold, 2026), and hereafter referred to as “**the REV B Heritage Assessment**”), based on a workshop hosted by MGL and attended by representatives from Mitchell Daysh, NZHP, Lane Neve, HNZPT, DOC, and CODC. This report was submitted as part of the FTAA application as Document B34.
- 22 In the Rev B Heritage Assessment, the sites in the BOGP area were grouped into five complexes:
- (i) McLean’s Pre-emptive Rights Complex
 - (ii) Rise and Shine Workings
 - (iii) Come-in-Time Workings
 - (iv) Shepherds Creek
 - (v) Matakanui-Bendigo Road

Key Concerns with BOGP Archaeology and Heritage Management

- 23 Although some issues raised in my initial report have since been resolved, there are key outstanding issues that have not been addressed. Should the project go ahead, these deficiencies will lead to problems with the management and the appropriate mitigation of site damage caused by the BOGP.
- 24 **Survey deficiencies.** Archaeological surveys of the BOGP area undertaken by NZHP from late 2017 to May 2025 were conducted using a combination of desktop analyses (extensively using LiDAR data provided by MGL) to identify points of interest to investigate in the field.

- (a) The greatest area of coverage was during December 2018 survey, meaning that information, particularly site condition, for many of these sites is now over six years out of date.
- (b) Numerous sites were not found during the NZHP surveys, or had their locations identified using LiDAR data but were not found and inspected in the field (**APPENDIX 3**).
- (c) Many of the sites that were inspected were lacking in descriptive information or were not sufficiently photographed, which provides inadequate information to understand their heritage value.
- (d) The limitations in the field survey and the presented results provide insufficient information for the sites affected or potentially affected by the BOGP and may inadvertently lead to a diminished perceived significance of the heritage of the project area.

25 **Approach to Assessment of Heritage Values and Significance.** The Rev B Heritage Assessment has deficiencies regarding its approach to evaluating heritage significance.

- (a) The significance criteria for “Very High” requires sites to be previously acknowledged as “World Heritage Sites (and proposed sites)” or to a “heritage sites of acknowledged international importance. There are few sites in New Zealand that possess this status, and those that do are predominantly outstanding natural landscapes.
- (b) The inclusion of an unattainable international criteria “raises the bar” for heritage significance and may lead panel assessors to perceive sites across the BOGP area as having a generally lower level of significance.
- (c) The insufficient description of sites and omission of previously recorded sites that were unable to be found may further exacerbate this situation, lowering the perceived value of the BOGP heritage landscape.
- (d) The **Rev B Heritage Assessment** report otherwise considers the project area to hold collectively high heritage values. It assesses the five site complexes for their heritage values, however it assesses its components (archaeological sites) only for their individual archaeological values.

- (e) This approach means that the Rev B Heritage Assessment is primarily geared towards the destruction of these sites through an expected HNZPT archaeological authority, and fails to appropriately engage with the purpose and protections of the Bendigo Covenant. The proposed uplift of the Covenant through the FTAA is treated as a fait accompli. The proposed uplift of the covenant will also remove the additional legal protections of multiple sites not considered to be affected by the BOGP.
- (f) There are also several sites that will be potentially affected by works or are in close enough proximity to works that their heritage and archaeological values should also be assessed (APPENDIX 4).

26 **Deficiencies in Assessment of Effects on Heritage Values.** The Rev B Heritage Assessment notes that the project earthworks will result in the destruction of 19 and modification of 8 archaeological sites within the BOGP works area (p165). It is correctly stated that this will result in major adverse impacts on the heritage values of the Rise and Shine workings and Shepherd's Creek valley.

- (a) The report notes that the destruction of the Rise and Shine workings result in the loss of the earliest example of alluvial gold activities but argues that this removal will not detract from the overall high heritage values of the Bendigo Quartz Reefs Historic Area. This argument does not make logical sense, as the list entry for the BQR Historic Area specifically states that its historic significance is "as an area that tells the story of 1860s alluvial mining through to the Depression mining of the 1930s." The proposed total destruction of the Rise and Shine workings will remove the physical representation of the earliest part of this story, substantially affecting the historic significance of the area.
- (b) Potential effects of vibrations caused by blasting on heritage features have not been considered. The 2026 Memo prepared by Marshall Day Acoustics: "Blasting vibration – Effects on heritage structures" indicates that there is sufficient reason to expect that blasting from mine operations will have a potentially destabilising effect on built archaeological and heritage sites (e.g. stonework and concrete structures).

- (c) The Memo proposes a Noise and Vibration Management Plan (NVMP) including dilapidation (precondition) surveys of heritage features within a nominal distance of blasting activities, suggesting 500 m as potential buffer. This would aid the identification of places where temporary shoring or other protection is warranted. The memo lists certain heritage items that may be affected by blasting; however, this does not consider many other sites that may be impacted.
- (d) The recommendation in the memo for a NVMP indicates that sites outside of the BOGP footprint may be affected by blasting resulting from mining activities.
- (e) There are several sites located within 500 metre buffers of the four proposed pit boundaries that may be affected (APPENDIX 5). These sites are outside of the BOGP footprint, and their values have not been assessed in the Rev B Heritage Assessment.
- (f) Many of these sites consist of dry-laid stonework or concrete and may be more susceptible to vibrations from blasting.
- (g) If there is potential for these sites to be modified by blasting operations, the Archaeological and Heritage and Management Plan must be updated to provide methods for their protection.
- (h) Potential sites that have not been found may also be affected by vibrations from blasting.
- (i) This also means that there would be a greater effect on the Come-In-Time Battery complex (G41/251), and potentially the Come in Time water race (G41/586) (specifically the revetted sections), than is considered in the Rev B Heritage Assessment.
- (j) Despite recommendations in the Marshall Day Acoustics memo, advise should be sought from a qualified structural engineer to provide the best advice on mitigating or managing the potential effects on these sites.

27 **Problems with heritage management recommendations**

The Rev B Heritage Assessment provides recommendations to avoid, minimise and/or mitigate adverse effects on the values of the archaeology and heritage

(Section 11, pp 172-175). The BOGP will see at least 30 sites affected by its works, 19 of which will be destroyed outright. These numbers do not account for potentially affected sites omitted in the Rev B Heritage Assessment, such as those that might be susceptible to vibration damage caused by blasting.

- (a) The requirements of open-pit gold mining radically alter the landscape and cannot be adjusted due to the location of gold deposits. Less adverse options are generally not considered as a result. The only sites to be preserved are the G41/4 rabbitier's hut, G41/5 stock yards, and the majority of the G41/251 Come-in-Time Battery (however this site is likely to be affected by blasting). While these sites were assessed to have Medium-High Values, and their preservation are superficially good provisions, their protection is tantamount to "easy wins" as these are sites that are not likely to provoke significant redesign to the BOGP.
- (b) Many of the sites affected by the BOGP fall within the Bendigo Station Conservation Covenant, which NZHP recommends should be uplifted so the sites may be destroyed under an archaeological authority granted through the FTAA.
- (c) The Rev B Heritage Assessment recommends that sites within the uplifted Covenant area but outside the BOGP disturbance footprint area must be protected during the life of the mine, as per the AHMP.
- (d) Although the AHMP notes that no earthworks will be undertaken outside of the BOGP footprint, it does recommend that sites close to the project area must be clearly marked with semi-permanent fencing and avoided.

The Rev B Heritage Assessment recommends in particular that sites G41/270, G41/271, G41/272, G41/274, G41/585, G41/587 and G41/588 should be clearly marked. Most of these sites, in addition to others not listed (which may also need protection), were not found during the survey and their available spatial data would be old and inaccurate. As the locations of these sites could not be verified by archaeologists, supplying contractors with spatial data will do little to ensure their location or protection. This approach relies on attempting to protect sites during the course of

earthworks, which is more likely to result in their accidental destruction prior to recording.

- (e) The recommendations have not been updated in relation to the potential effects caused by blasting outlined in the “Blasting vibration – Effects on heritage structures” memo prepared by Marshall Day Acoustics (2026). This means numerous sites may be affected but are not considered (see APPENDIX 5).
- (f) The Rev B Heritage Assessment recommends monitoring of all earthworks that may affect archaeological sites, in accordance with the AHMP. Although the AHMP recommends “topsoil scrapes” followed by archaeological investigation, this reads as a reactive approach to the requirements of the BOGP. A better outcome for heritage would involve the structured and systematic investigation and excavation of many of these sites under a well-developed research design.
- (g) The Rev B Heritage Assessment recommends that archaeological and heritage information should be made publicly available, including one report to satisfy FTAA conditions normally required under the HNZPTA 2014 and the RMA 1991.
- (h) The Rev B Heritage Assessment also recommends that the results of the required archaeological investigations, including reports, and other digital data such as photographs and 3D models are provided to the Cromwell Museum, or that the digital data be made publicly available.
- (i) The Rev B Heritage Assessment also recommends that artefacts and building materials unable to be repurposed should be offered to the Cromwell Museum.
- (j) These recommendations assume the museum has the resources and capacity to receive and store the physical artefacts, building materials and digital data. There is no provision for funding, skills, and resources for the museum to display the artefacts and digital data.
- (k) As a result, these recommendations place no onus on MGL to provide funding, support, or a framework to ensure that the results

of any archaeological or heritage investigations are disseminated to the public.

Conclusion and Recommendations

The area to be affected by the BOGP, holds significant heritage value exemplified by the Bendigo Quartz Reef Historic Area and the Bendigo Covenant. The BOGP will cause destruction on a massive scale to the landscape of the project area, and to its heritage and archaeological sites. Should the project go ahead, consent under the FTAA will need to be granted in relation to any statutory requirements by HNZPT and DOC. Under section 6(f) of the RMA, the CODC has a responsibility to safeguard historic heritage from inappropriate development.

If the project is granted approval to go ahead, the CODC should impose conditions in relation to attempting to mitigate the significant effects on the heritage and archaeological values of the sites affected by the BOGP.

- 28 CODC should recommend that the Archaeology and Heritage Management Plan is revised so that is fit for purpose in relation to outdated condition information, the sites not found during surveys.
 - (a) Sites should be resurveyed with a focus on updating site condition information and inspecting sites not found during the 2017-2025 heritage surveys.
- 29 Sites potentially affected by blasting should be identified and included as part of an updated Heritage Assessment (see APPENDIX 5 for preliminary review of potentially affected sites).
 - (a) An updated Archaeological and Heritage Management Plan should be produced to incorporate potential effects of vibrations caused by blasting.
 - (b) Sites outside of the BOGP impact area but identified as potentially affected by vibrations from blasting should be inspected by a suitably qualified professional (e.g. structural engineer), in consultation with an archaeologist to determine the threshold of blasting levels that may affect the sites.
 - (c) Vibration monitoring instrumentation should be installed in these areas and inspected by the archaeologist, in consultation with a

suitably qualified professional, to ensure this threshold is not exceeded.

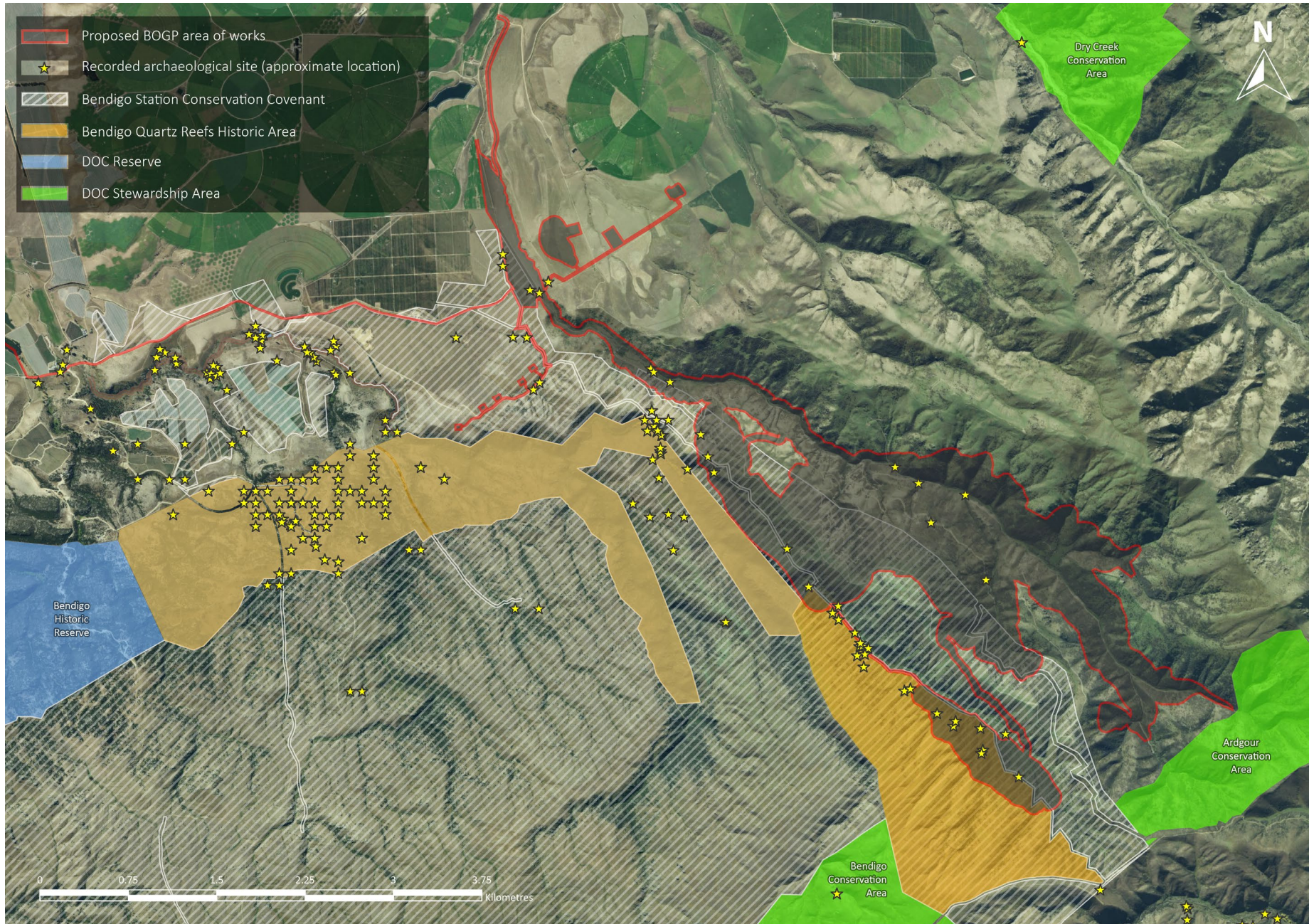
- 30 A research design should be developed to formulate a comprehensive approach to retrieving archaeological information from sites investigated prior to their destruction. This should be focused on the different site complexes defined in the Rev B Heritage Assessment.
- 31 Any artefacts, building materials and digital data offered to the Cromwell Museum must be done under an agreement that provisions for funding cataloguing of material, displays, and resources for hosting and presenting digital information such as photography and 3D models.
- 32 The results of all archaeological recording and investigations should be published in a format available to the public. This should be available in addition to the mandatory report hosted on the HNZPT digital library. This publication could take the form of a book available at the Cromwell Museum (or more widely), or a digital eBook hosted on the Cromwell Museum and MGL/Santana websites (or more widely).

.....
Christopher Gregg Jennings

8 April 2026

APPENDIX 1 – Project Area Showing Archaeological Sites and Heritage Area

(Next page)



APPENDIX 2 – Reports Reviewed by Origin Heritage in Relation to the BOGP

APPENDIX 2A – Archaeology and Heritage Reports Reviewed by Origin Heritage prior to FTAA lodgement.

Woods, N. and Thorrold, C. (2025). The Bendigo-Ophir Gold Project: A Heritage Assessment. Report Prepared for Matakanui Gold Ltd.

Woods, N. (2025a). The Bendigo-Ophir Gold Project: An Archaeological Management Plan. Report Prepared for Matakanui Gold Ltd.

Woods, N. (2025b). Re: Ardgour Rise Realignment April 2025. Correspondence to Daniel Cornish, Santana Minerals Limited.

Woods, N. (2025c). BOGP magazine and Emulsion Tank. Correspondence to Daniel Cornish, Santana Minerals Limited.

Woods, N. (2025d). BOGP Construction Camp, Bendigo: A Heritage Assessment. Report Prepared for Matakanui Gold Ltd.

Thorrold, C. (2025). Re: CIT Track April 2025. Correspondence to Daniel Cornish, Santana Minerals Limited.

**APPENDIX 2B – BOGP related documents considered by Origin Heritage
for current review.**

NZHP reports and correspondence

- Woods, N. (2017). Letter to HNZPT Regional Archaeologist Otago/Southland (Assessment of trenching and access routes for MGL in the Thompsons Gorge area). 06/11/2017.
- Woods, N. (2018). Letter to HNZPT Regional Archaeologist Otago/Southland (Impact of drilling and access routes for Matakanui Gold in the Thompsons Gorge area). 15/02/2018.
- Lawrence, M., Lewis, J., and Scrivener, P. (2018). Thomson Gorge, Bendigo-Ophir, Central Otago: Report on Archaeological Survey. Report Prepared for Matakanui Gold Ltd.
- Lawrence, M. (2019). Letter to Regional Archaeologist Otago/Southland (Impact of proposed new drilling for Matakanui Gold in the Thompsons Gorge area, Central Otago). 21/02/2019.
- Lawrence, M. (2020). Letter to Kim Bunting (Impact of proposed new drilling for Matakanui Gold in the Thompsons Gorge area, Central Otago). 27/11/2020.
- Lawrence, M. (2021a). Letter to Kim Bunting, re: Bendigo-Ophir Hand Sampling 2021. 13/08/2021.
- Lawrence, M. (2021b). Letter to Kim Bunting and HNZPT Regional Archaeologist Otago/Southland, re: Bendigo-Ophir Drilling 2021 December – Updated Letter. 09/09/2021.
- Lawrence, M. (2021c). Letter to Kim Bunting, re: Bendigo-Ophir Hand Sampling 2021. 23/12/2021.
- Lawrence, M. (2022a). Letter to Kim Bunting, Re: Bendigo-Ophir Drilling 2022 May. 13/05/2022
- Lawrence, M. (2022b). Letter to Kim Bunting, Re: Bendigo-Ophir Drilling 2022 June - Shreks (SHR), Shreks East (SRE) and Thomsons Saddle (TSD) target areas within the Ardgour Station. 20/06/2022.
- Lawrence, M., and Hurford, J. (2022). Letter to Kim Bunting, Re: Bendigo-Ophir Drilling 2022 June - RC210308_Variation_Region_2205 target area within the Ardgour Station. 20/06/2022
- Lawrence, M. (2022c). Letter to Kim Bunting, Re: Bendigo-Ophir Drilling 2022 May – Update with Survey Results. 23/06/2022
- Lawrence, M. (2022d). Letter to Kim Bunting, Re: Bendigo-Ophir Drilling 2022 June - Shreks (SHR), Shreks East (SRE) and Thomsons Saddle (TSD) target areas within the Ardgour Station. 02/08/2022.

- Lawrence, M. (2022e). Letter to Kim Bunting, Re: Bendigo-Ophir track formation and widening, and proposed drilling in the Thomson Saddle and Upper Thomsons Saddle target areas. 24/08/2022.
- Lawrence, M. (2023). Letter to Kim Bunting, Re: Bendigo-Ophir Drilling 2023 February. 06/03/2023.
- Woods, N. (2025a). BOGP magazine and Emulsion Tank. Correspondence to Daniel Cornish, Santana Minerals Limited.
- Woods, N. and Thorrold, C. (2025). The Bendigo-Ophir Gold Project: A Heritage Assessment. Report Prepared for Matakanui Gold Ltd.
- Woods, N. (2025). The Bendigo-Ophir Gold Project: An Archaeological Management Plan. Report Prepared for Matakanui Gold Ltd.
- Woods, N. (2025). Re: Ardgour Rise Realignment April 2025. Correspondence to Daniel Cornish, Santana Minerals Limited.
- Thorrold, C. (2025). Re: CIT Track April 2025. Correspondence to Daniel Cornish, Santana Minerals Limited.
- Woods, N. (2025). BOGP Construction Camp, Bendigo: A Heritage Assessment. Report Prepared for Matakanui Gold Ltd.
- Woods, N. (2026a). Letter to HNZPT. re: BOGP Fast-Track Application Request for Further Information. 20/01/2026
- Woods, N. (2026b). Letter to CODC. re: CODC BOGP Fast-Track Application Request for Further Information. 30/01/2026
- Woods, N. and Thorrold, C. (2026). The Bendigo-Ophir Gold Project: A Heritage Assessment. Report Prepared for Matakanui Gold Ltd (Revised).

Other MGL Technical expert reports

- Gaviria, J. (2025). Bendigo-Ophir Gold Project: Assessment of Noise and Vibration Effects. Report Prepared for Matakanui Gold Ltd. Marshall Day Acoustics.
- Farren, J., and Gaviria, J. (2026). Re: Blasting vibration – Effects on heritage structures. Correspondence to Mary Askey. 03/03/2026.

Reports by other affected parties

- Ritchie, N. (2025). Review of the Bendigo-Ophir Gold Project Heritage Assessment prepared for Matakanui Gold Ltd by NZ Heritage Properties (2025). Report prepared for the Department of Conservation.

APPENDIX 3 – Sites not surveyed, sites not found, or inadequate description of sites provided.

ArchSite No.	Type of Site	Probable/Potential Impact	Comment
G41/270	Stone Hut	Haul road	Not able to be found.
G41/271	Stone Hut	Haul road	Revisited, but no further description in Main Heritage Report .
G41/272	Stone Hut	Haul road	Revisited, but no further description in Main Heritage Report .
G41/273	Stone Hut	Haul road	Identified on LiDAR only.
G41/274	Stone Hut	SRX Topsoil Stockpile	Not able to be found.
G41/275	Stone Hut	Haul road	Not able to be found.
G41/276	Stone Hut	Haul road	Not able to be found.
G41/587	Terraces	Haul road	Identified on LiDAR only.
G41/588	Historic midden	Haul road	Identified on LiDAR only.
G41/589	Revetted Road	CIT Pit	Not inspected due to vegetation growth
G41/590	Mine Road/track	Will not be affected	Identified on LiDAR only.
G41/593	Terrace/pathway	Come-in-Time track	Identified on LiDAR only.
G41/606	Stone Hut	Haul road	Identified on LiDAR only.

APPENDIX 4 – Potentially affected sites not considered in Heritage Rev B Assessment and AHMP.

ArchSite No.	Site Features	Probable/Potential Impact	Comment
G41/257	Chimney/ Campsite	Pest Exclusion Zone; Roding, House Platforms	The ArchSite record places this site within the area of G41/256, and approximately five metres a road from the Buildings and Non-Mine Infrastructure Area to the Bendigo Pest Exclusion Zone. No reference is made to it in the Rev B Heritage Assessment .
G41/258	Chimney	Road	The ArchSite polygon of this site indicates it may be affected by a road from the Buildings and Non-Mine Infrastructure Area to the Bendigo Pest Exclusion Zone. This site has not been considered in the Rev B Heritage Assessment .
G41/268	Hut/Fireplace	SRX Topsoil stockpile	ArchSite polygon places this site near a proposed topsoil stockpile northwest of the SRX Pit, and it may be affected by earthworks. It may also be affected by blasting (see APPENDIX 5) Although the site is listed as one of the visited sites in the Rev B Heritage Assessment there is no further description of the site.
G41/270	Stone Structure	Haul Road	The ArchSite polygon of this site is intersected by a proposed haul road, however it was not relocated during surveys described in the Rev B Heritage Assessment . Previous site records indicate this is immediately adjacent to the road, and it will potentially be affected by any road modification. It may also be affected by blasting (see APPENDIX 5)
G41/274	Stone hut	SRX Topsoil stockpile	ArchSite polygon places this site near a proposed topsoil stockpile northwest of the SRX Pit, and it may be affected by earthworks and blasting (see APPENDIX 5). This previously recorded site was not found during the surveys described in the Rev B Heritage Assessment .

ArchSite No.	Site Features	Probable/Potential Impact	Comment
G41/275	Stone Hut/Forge ?	Haul Road	<p>The ArchSite location of this site is near a proposed haul road, however it was not relocated during surveys described in the Rev B Heritage Assessment.</p> <p>This site was not relocated during the NZHP surveys.</p>
G41/276	Stone Chimney	Haul Road	<p>The ArchSite location of this site is near a proposed haul road, however it was not relocated during surveys described in the Rev B Heritage Assessment.</p> <p>This site was not relocated during the NZHP surveys.</p>
G41/585	Dam	Haul Road	<p>Dam site is described in report as being revisited but it is not described in the Rev B Heritage Assessment or potential impacts considered.</p>
G41/669	Sluicings/ sluicing face, Tailings	Haul Roads, SRX Pit, SRX ELF	<p>This sluicing site is close enough to proposed works that potential impacts should be considered in the Rev B Heritage Assessment.</p>

APPENDIX 5 – Sites potentially affected by blasting activities

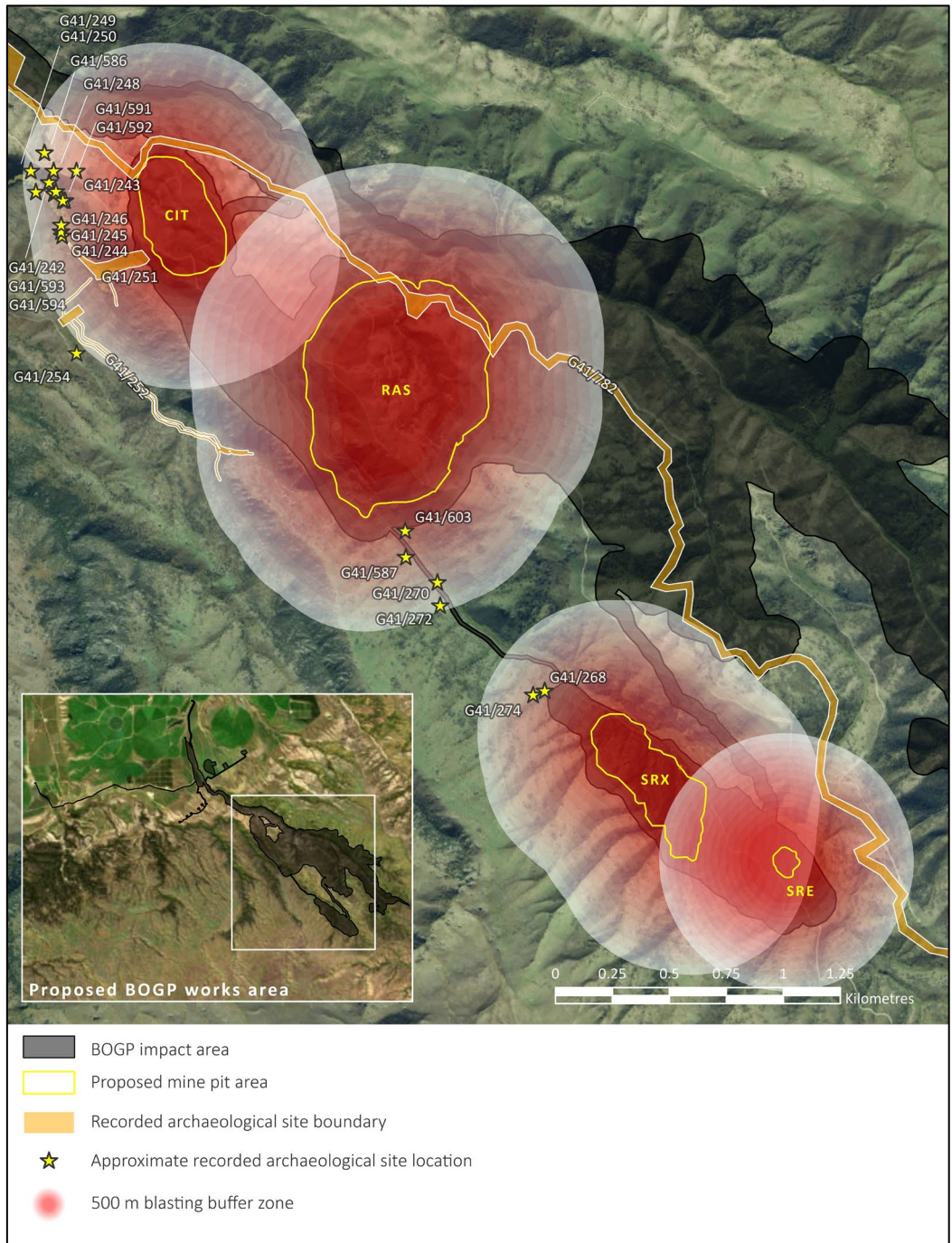


Figure 1. Aerial photograph mark-up showing sites within 500 m buffer of pits potentially affected by blasting.

Table 1. List of sites within 500 m buffer of pits potentially affected by blasting.

ArchSite No.	Site Features
G41/242	Alluvial gold workings. Stacked tailings approximately 2 m long and 500 mm high.

ArchSite No.	Site Features
G41/243	Stone structure
G41/244	Stone hut
G41/245	Stone enclosure
G41/246	Stone hut
G41/247	Stone hut
G41/248	Stone hut
G41/249	Stone hut
G41/250	Stone hut
G41/251	Mining battery with associated features including two adits, mullock, track, wall, incline, possible ore bin. The machine was possibly made up of two smaller ones
G41/252	Mine and battery with associated features including water race, rock pedestal supporting pipe, prospecting trench, shovel blade, and iron bar
G41/254	Forge
G41/268	Hut/fireplace
G41/270	Stone structure
G41/272	Stone hut with stacked, mortared schist walls
G41/274	Stone hut.
G41/586	Water race, with revetted sections, running from dam along creek gully
G41/587	Two terraces, one with stone facing
G41/591	Stone hut
G41/592	Stone hut
G41/594	Revetted terrace
G41/603	Pathway with stone revetting
G41/782	Stacked stone road revetments and culverts.