

MERIDIAN ENERGY LTD – WAITAKI HYDRO-ELECTRIC POWER SCHEME RECONSENTING

FAST TRACK CONSENT (FTC): LOW LEVEL ARMOURING FOR LAKE PŪKAKI DAM SUBSTANTIVE APPLICATION



Landscape Assessment:

Graphic Attachments

November 2025



CONTENTS

APPENDIX A: 21 X PHOTOGRAPHIC VIEWPOINTS (COMPARED WITH ORIGINAL VIEWPOINTS BY ROUGH+MILNE 2012)3

APPENDIX B: PHOTO STUDY OF DIFFERENT LAKE LEVELS.....21

APPENDIX C: VISUAL SIMULATIONS.....36

Revision History

Revision No.	Prepared By	Description	Date
A	Kim Goodfellow	Substantive Application (SA)	05/11/2025

Prepared by The Goodfellow Group, Christchurch.



APPENDIX A: 21 X PHOTOGRAPHIC VIEWPOINTS (COMPARED WITH ORIGINAL VIEWPOINTS BY ROUGH+MILNE 2012)

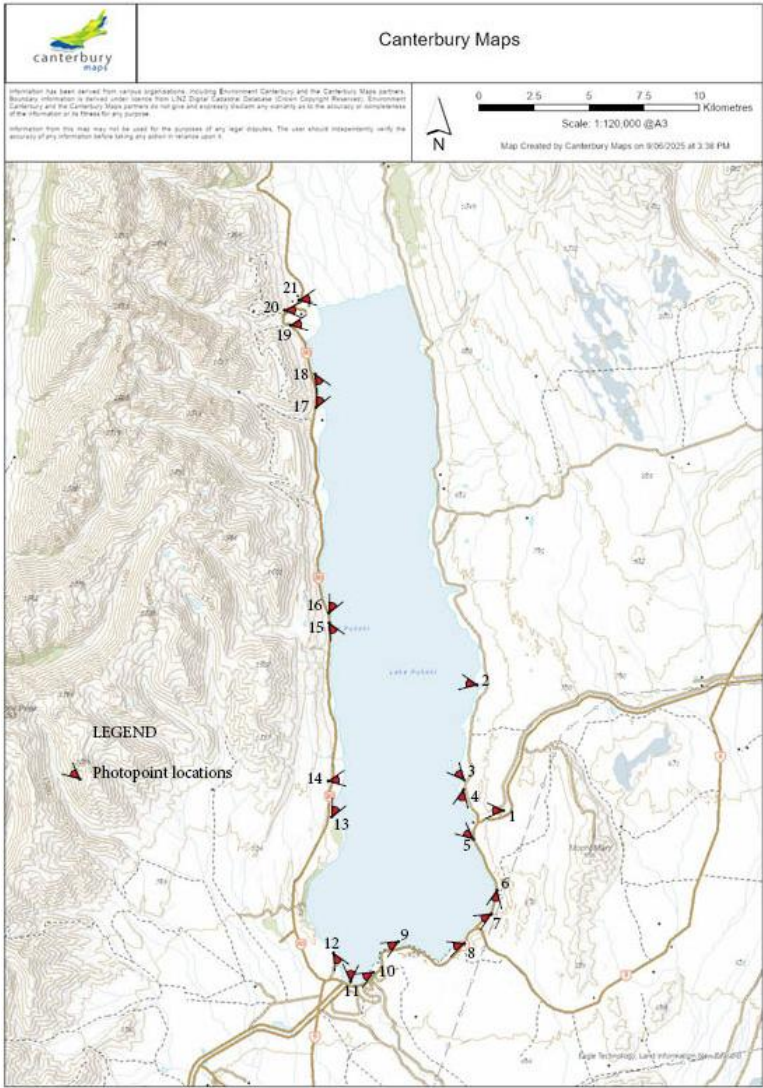


Figure 1: Viewpoint Location Map.



Viewpoint 1 - Panorama looking west across Lake Pukaki from Pukaki Canal Road



Viewpoint 1: Panorama looking west across Lake Pūkaki from Pūkaki Canal Road.



Viewpoint 2 - Panorama looking south west across Lake Pukaki, towards Morgans Island, from Hayman Road



Viewpoint 2 Panorama looking south west across Lake Pūkaki, towards Morgans Island from Hayman Road.



Viewpoint 3 - Panorama looking north west across Lake Pukaki from Hayman Road



Viewpoint 3: Panorama looking north west across Lake Pūkaki from Hayman Road.



Viewpoint 4 - Panorama looking south across Lake Pukaki from Hayman Road



Viewpoint 4: Panorama looking south across Lake Pūkaki from Hayman Road.



Viewpoint 5 - Panorama looking towards Tekapo B Power Station from Hayman Road



Viewpoint 5: Panorama looking towards Tekapo B Power Station from Haymans Road.



ROUGH+MILNE (2012)

Viewpoint 6 - Panorama looking south west across Lake Pukaki from Hayman Road



Viewpoint 6: Panorama looking south west across Lake Pūkaki from Haymans Road.



ROUGH+MILNE (2012)

Viewpoint 7 - Panorama looking south west across Lake Pukaki from a section of the recently constructed Alps to Ocean Cycle Trail



Viewpoint 7: Panorama looking south west across Lake Pūkaki from a section of the Alps to Ocean Cycle Trail.



ROUGH+MILNE (2012)

Viewpoint 8 - Panorama looking west across Lake Pukaki from State Highway 8



Viewpoint 8: Panorama looking west across Lake Pūkaki from State Highway 8.



Viewpoint 9 - Panorama looking south west across Lake Pukaki from State Highway 8



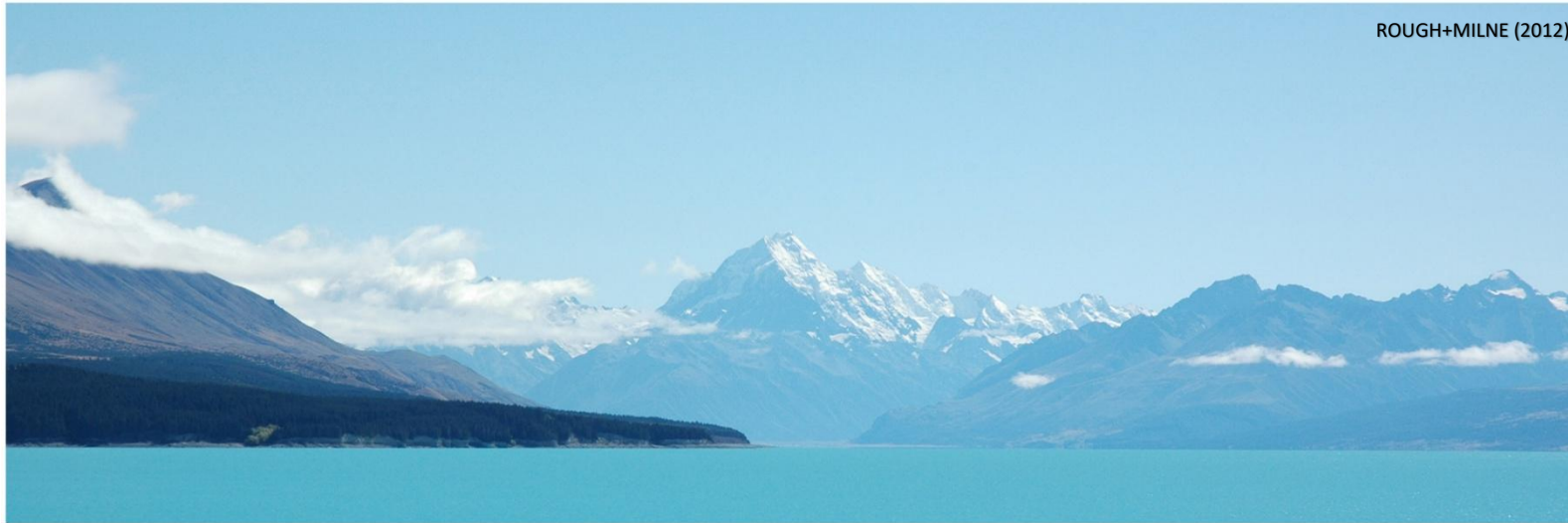
Viewpoint 9: Panorama looking south west across Lake Pūkaki from the Alps to Ocean Cycle Trail.



Viewpoint 10 - Panorama looking towards the Pukaki High Dam from State Highway 8



Viewpoint 10: Panorama looking towards the Pūkaki High Dam from State Highway 8.



Viewpoint 11 - Panorama looking north across Lake Pūkaki towards Aoraki Mt Cook from the Lake Pūkaki lookout carpark.



Viewpoint 11: Panorama looking north across Lake Pūkaki towards Aoraki Mt Cook from the Lake Pūkaki lookout carpark.



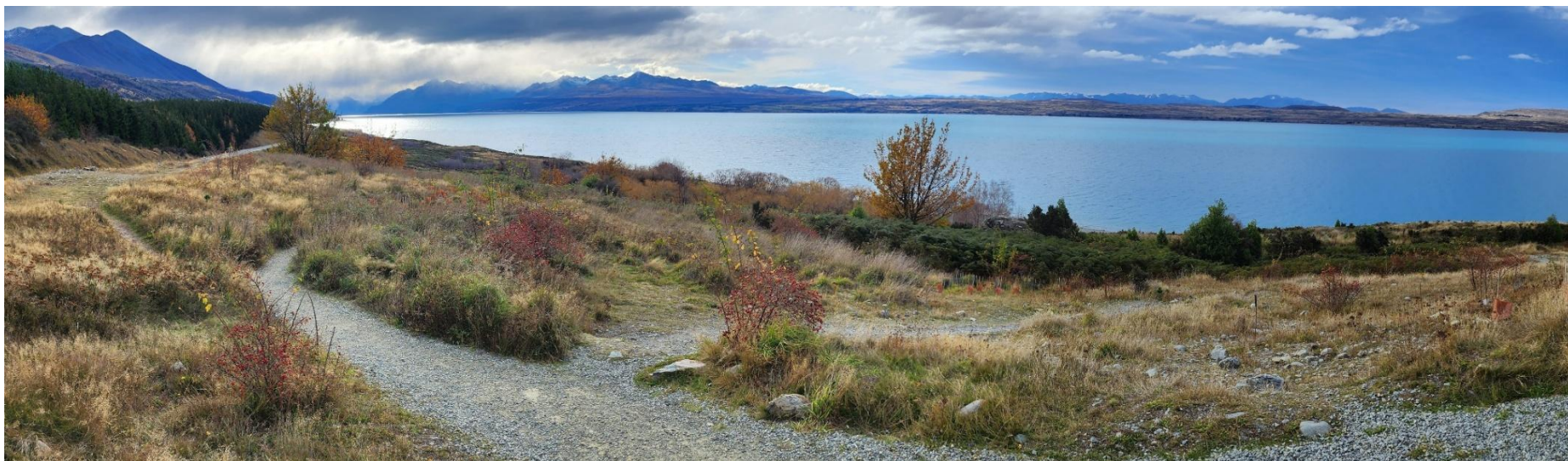
Viewpoint 12 - Panorama looking east back towards the south end of Lake Pūkaki from the start of the Marker Bay Walkway



Viewpoint 12: Panorama looking east back towards the south end of Lake Pūkaki from the start of the Marker Bay Walkway.



Viewpoint 13 - Panorama looking north east across Lake Pukaki from Peters Lookout, adjacent to State Highway 80



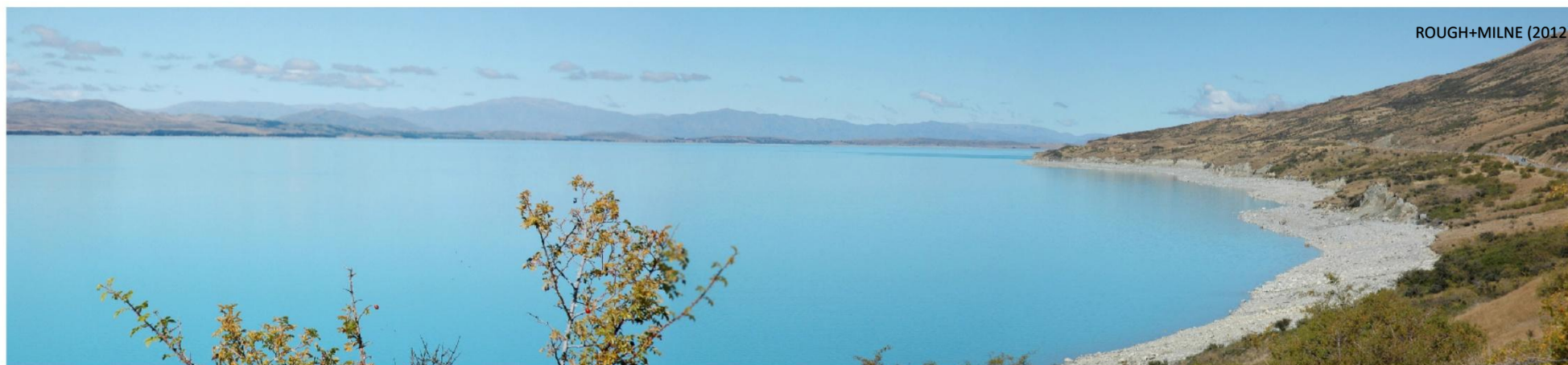
Viewpoint 13: Panorama looking north across Lake Pūkaki from Peters Lookout, adjacent to State Highway 80.



Viewpoint 14 - Panorama looking east over cutover pine plantation across Lake Pukaki from State Highway 80

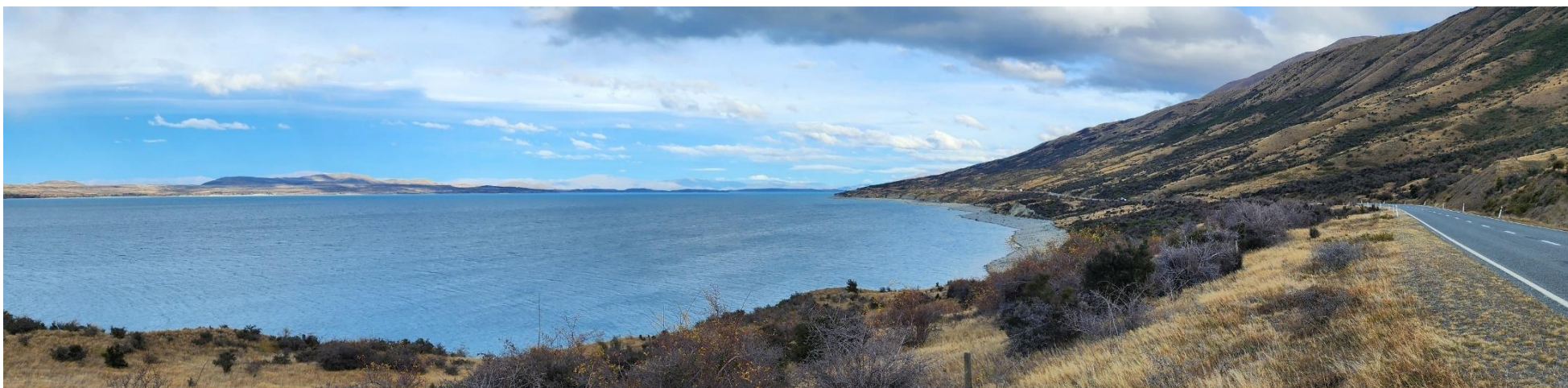


Viewpoint 14: Panorama looking east over cutover pine plantation across Lake Pūkaki from State Highway 80.



ROUGH+MILNE (2012)

Viewpoint 15 - Panorama looking south across Lake Pukaki from State Highway 80



Viewpoint 15: Panorama looking south across Lake Pūkaki from State Highway 80.



Viewpoint 16 - Panorama looking north across Lake Pukaki toward the Tasman Delta and Aoraki Mt Cook from State Highway 80



Viewpoint 16: Panorama looking north across Lake Pūkaki toward the Tasman Delta and Aoraki Mt Cook from State Highway 80.



Viewpoint 17 - Panorama looking south east across Lake Pukaki from State Highway 80

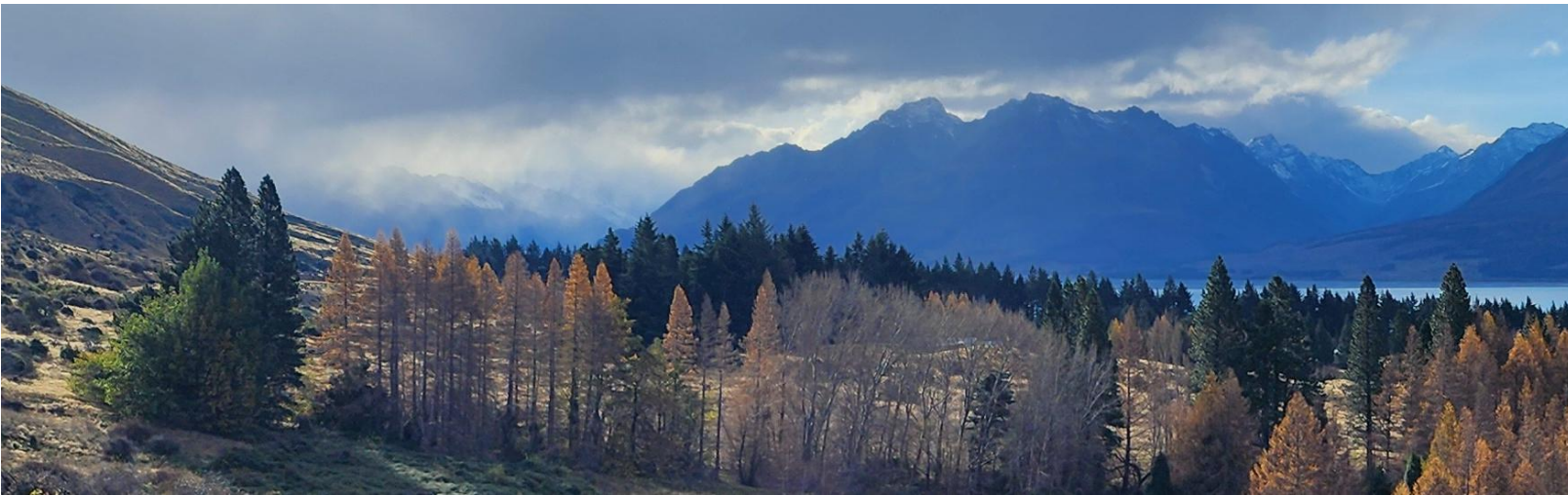


Viewpoint 17: Panorama looking south east across Lake Pūkaki from State Highway 80.



ROUGH+MILNE (2012)

Viewpoint 18 - Panorama looking across Ferintosh Station towards Aoraki Mt Cook from State Highway 80



Viewpoint 18: Panorama looking across Ferintosh Station towards Mt Aoraki from State Highway 80.



ROUGH+MILNE (2012)

Viewpoint 18 - Panorama looking across Ferintosh Station towards Aoraki Mt Cook from State Highway 80



Viewpoint 19a: Panorama looking north east across Twin Streams Delta towards the Tasman Delta.



Viewpoint 19b - Panorama looking east across Twin Stream Delta towards the Tasman Delta and head of Lake Pukaki



Viewpoint 19b: Panorama looking east across Twin Streams Delta towards the Tasman Delta and head of Lake Pūkaki.



Viewpoint 20 - Panorama looking east toward the head of Lake Pukaki from State Highway 80



Viewpoint 20: Panorama looking east towards the head of Lake Pūkaki from State Highway 80.



Viewpoint 21 - Panorama looking east across the Tasman Delta from Glentanner Station



Viewpoint 21: Panorama looking east across the Tasman Delta from Glentanner Station.

APPENDIX B: PHOTO STUDY OF DIFFERENT LAKE LEVELS

This section provides photographic records of the lake water level at 531 mRL on January 16th 2025 (photo left), and at a lower lake level of 523 mRL on September 15th 2025 (photo, right).

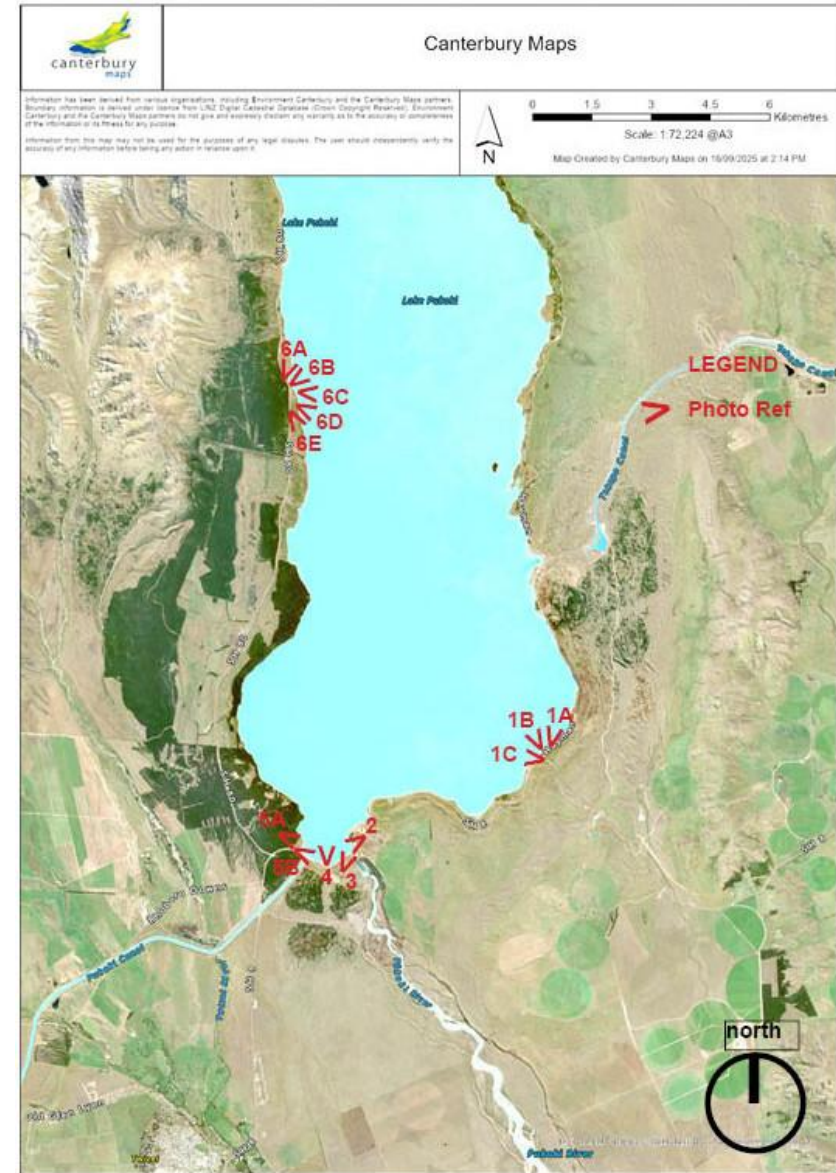


Figure 2: Key plan of photograph locations.



PHOTO REF: 1A



LOCATION: HAYMANS ROAD CARPARK, VIEW LOOKING NORTHEAST.



PHOTO REF:1B

LOCATION: HAYMANS ROAD CARPARK, VIEW LOOKING NORTH.





PHOTO REF: 1C

LOCATION: HAYMANS CARPARK, VIEW LOOKING WEST.



PHOTO REF: 2



LOCATION: VIEW FROM A2O CYCLETRAIL LOOKING SOUTHWEST.



PHOTO REF: 3

LOCATION: VIEW ASIDE SH8 LOOKING EAST TOWARDS MAIN DAM.





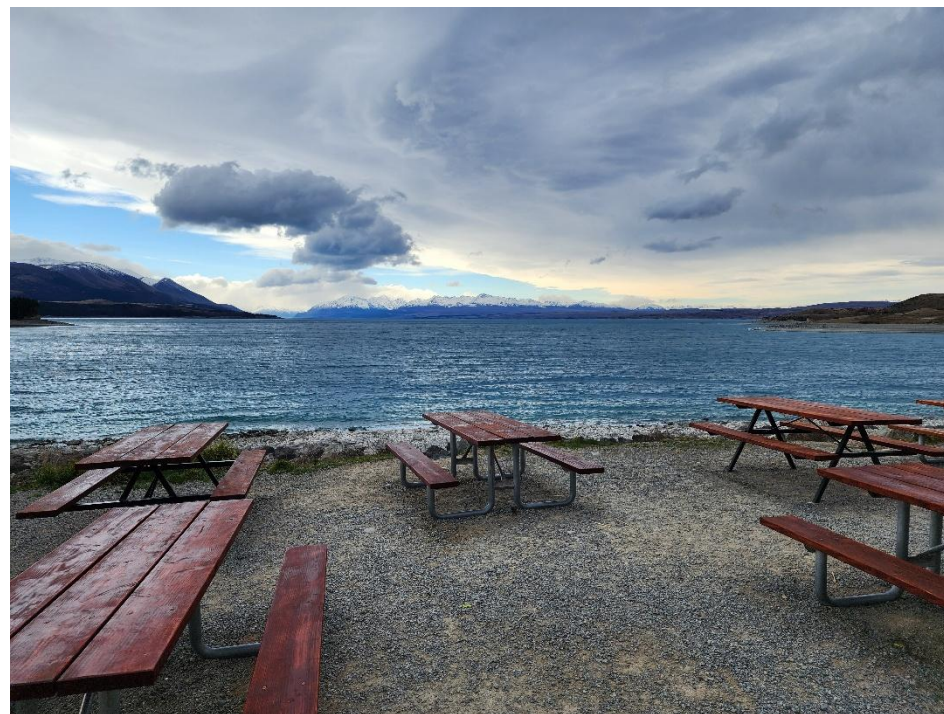
PHOTO REF: 4A



LOCATION: VIEW FROM LAKE PŪKAKI INFORMATION CENTRE LOOKING NORTHWEST.



PHOTO REF: 4B



LOCATION: VIEW FROM LAKE PŪKAKI INFORMATION CENTRE, LOOKING NORTH DIRECTLY TOWARDS AORAKI.



PHOTO REF: 5A

LOCATION: VIEW ASIDE SH8, LOOKING SOUTHEAST TOWARDS LAKE PŪKAKI INFORMATION CENTRE.





PHOTO REF: 5B

LOCATION: VIEW FROM THE START OF THE MARKER BAY WALKWAY, LOOKING EAST.





PHOTO REF: 6A

LOCATION: VIEW FROM PETERS LOOKOUT, LOOKING NORTH.





PHOTO REF: 6B

LOCATION: VIEW FROM PETERS LOOKOUT, LOOKING TO THE NORTHEAST.



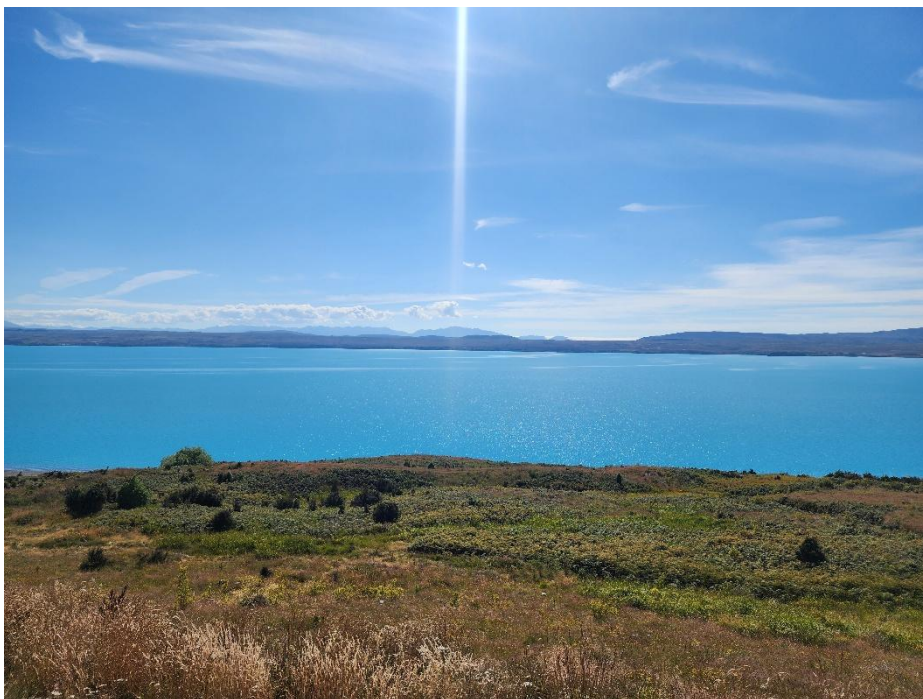


PHOTO REF: 6C

LOCATION: VIEW FROM PETERS LOOKOUT, LOOKING WEST TOWARDS HAYMANS ROAD.





PHOTO REF: 6D

LOCATION: VIEW FROM PETERS LOOKOUT, LOOKING SOUTHWEST.

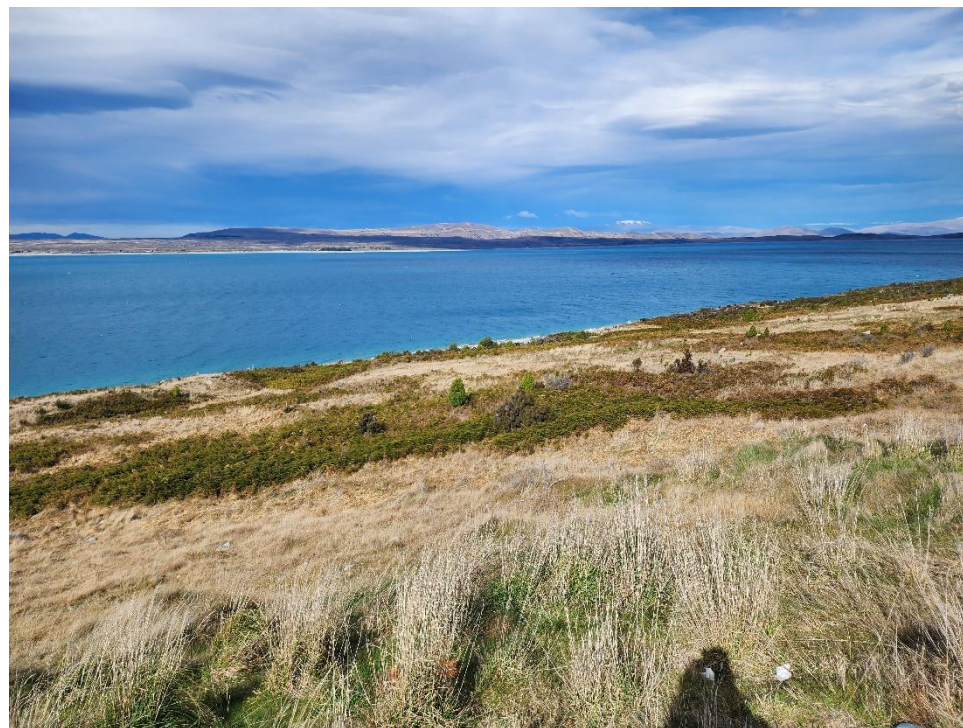




PHOTO REF: 6E

LOCATION: VIEW FROM PETERS LOOKOUT, LOOKING SOUTH TOWARDS SH8.



APPENDIX C: VISUAL SIMULATIONS

The following visual simulations ‘Viewpoints 1 and 2’ are intended to assist the Panel to gain an understanding of what Lake Pūkaki would look like if the lake level was lowered to 518 and 513 m RL. There is limited lake bathymetry data available meaning that these simulations should not be regarded as accurate and detailed photo simulations, but rather as indicative or impressionistic simulations of the two scenarios.

The 3D model of the greater surrounding terrain was constructed from the NZ Contours (Topo, 1:50k) datasets and the New Zealand 10m satellite imagery 2024-2025, available from the LINZ website. Where additional detail was required, a higher resolution aerial image was obtained from the Mackenzie 0.3m rural aerial photos 2021. As the LINZ data sets for the lake terminate at the 540m RL with a partial 530m RL at the northern end of the lake, the lake bed was constructed by tracing contours lines from the *Lake Pūkaki contours from 1996.pdf*¹ document supplemented by *Lake Pukaki Lakeshore profiles.pdf*² as a reference when contour lines intersected and could not be easily resolved.



FIGURE 3. VIEWPOINT 1: FROM LAKE PŪKAKI VISITOR CENTRE CARPARK LOOKING NORTH.



FIGURE 4. VIEWPOINT 2: FROM SH80 LOOKING NORTH TOWARDS AORAKI/MOUNT COOK.

¹ Lake Pūkaki areas digitised from satellite images, topographic, and bathymetric (Works Consultancy Services, 1996).

² Lake Pukaki Lakeshore profiles.pdf (Opus, 2018).

VIEWPOINT 1: FROM LAKE PŪKAKI VISITOR CENTRE CARPARK LOOKING NORTH.



VIEWPOINT 2: FROM SH80 LOOKING NORTH TOWARDS AORAKI/MOUNT COOK.

