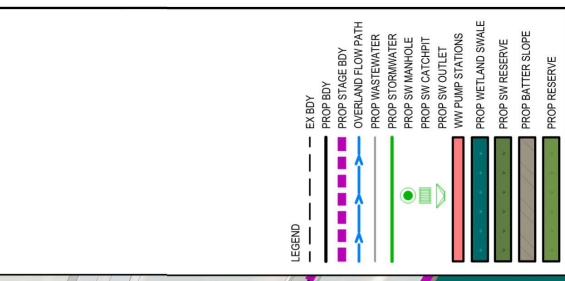


- NOTES**
1. ALL WORKS TO BE IN ACCORDANCE WITH WESTERN BAY OF PLENTY DEVELOPMENT CODE.
 2. CO-ORDINATES IN TERMS OF BAY OF PLENTY 2000.
 3. REDUCED LEVELS ARE IN TERMS OF NZVD 2016. IT IS THE CONTRACTORS RESPONSIBILITY TO LOCATE ALL SERVICES THAT MAY BE AFFECTED BY THEIR PROPOSED WORKS.
 4. HEAVY DUTY MANHOLE FLUIDS AND FRAMES TO BE USED IN TRAFFICED AREAS. ALL MANHOLES SHALL HAVE STAINLESS GRATES INSTALLED.
 5. ALL LINES ARE TO BE RORRI CLASS 4 UNLESS SHOWN OTHERWISE.



Rev	Description	By	Date
B	FOR CONSENT	MB	03/26
A	FOR REVIEW	MB	12/25

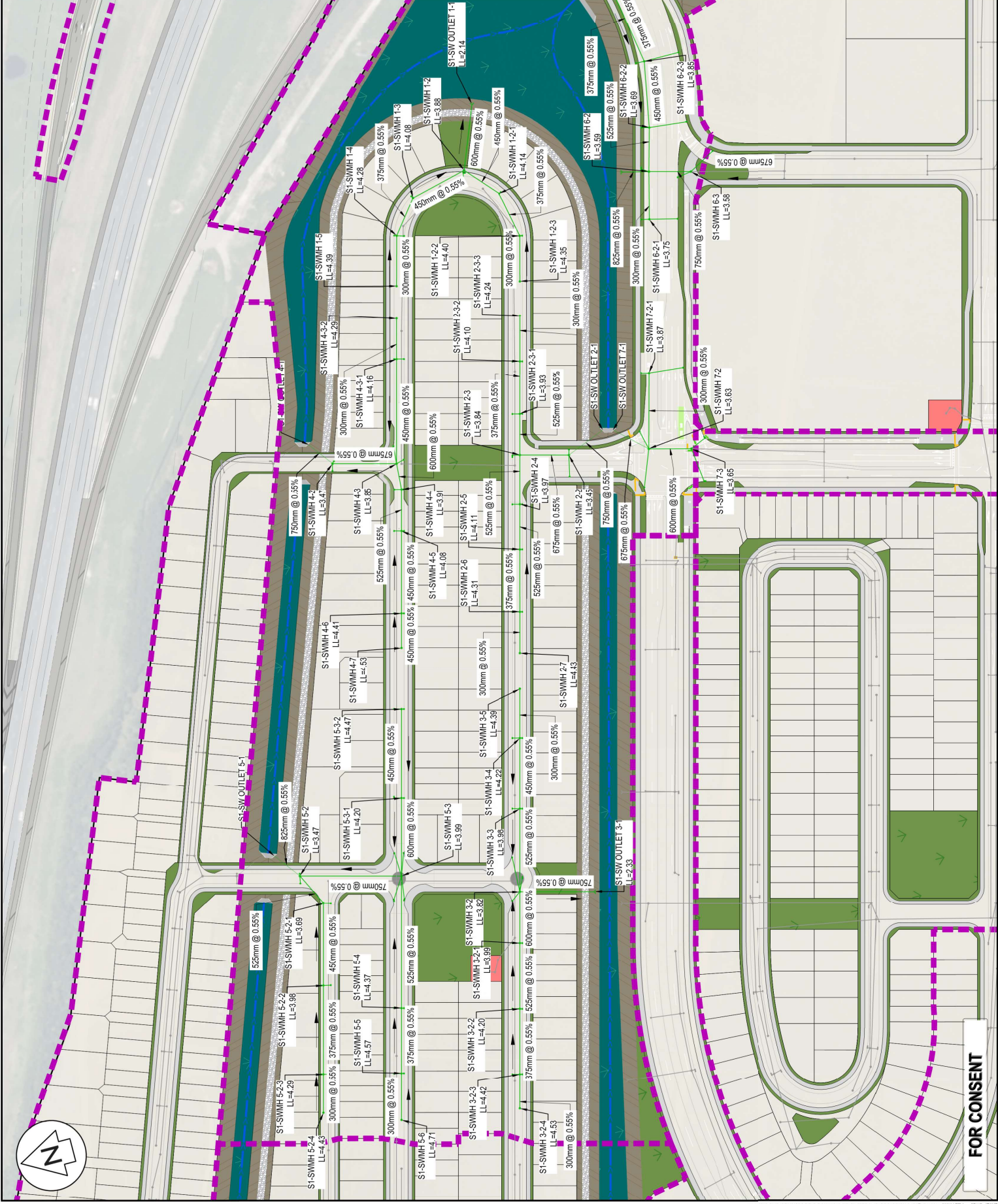
Survey	MAVEN	05/2025
Design	MB	11/25
Drawn	MB	12/25
Checked	CS	12/25

Maven Bay of Plenty
 115 Cameron Street, Tauranga
 New Zealand

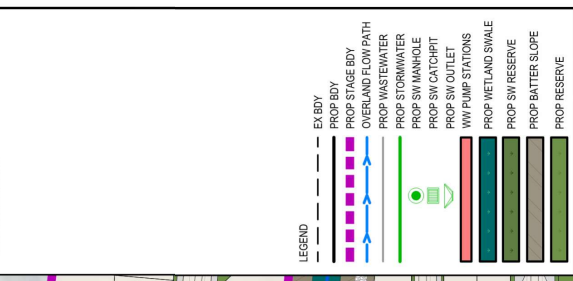
Project
WAIRAKEI SOUTH FTA090
DEVELOPMENT
BELL ROAD, PAPAMOA
FOR BELL ROAD
LIMITED PARTNERSHIP

Title
PROPOSED
STORMWATER LAYOUT
STAGE 1

Project no.	BOP0749
Scale	1:2000 @ A3
Card file	BP0915-000.DWG
Drawing no.	C400-1-1
Rev	B



- NOTES**
1. ALL WORKS TO BE IN ACCORDANCE WITH WESTERN BAY OF PLENTY DEVELOPMENT CODE.
 2. CO-ORDINATES IN TERMS OF BAY OF PLENTY 2000.
 3. REDUCED LEVELS ARE IN TERMS OF NZVD 2016. IT IS THE CONTRACTORS RESPONSIBILITY TO LOCATE ALL SERVICES THAT MAY BE AFFECTED BY THEIR EXISTING UTILITIES.
 4. HEAVY DUTY MANHOLE ELDS AND FRAMES TO BE USED IN TRAFFICKED AREAS. ALL MANHOLES SHALL HAVE STAINLESS GRATES INSTALLED.
 5. ALL LINES ARE TO BE RORRI CLASS A UNLESS SHOWN OTHERWISE.



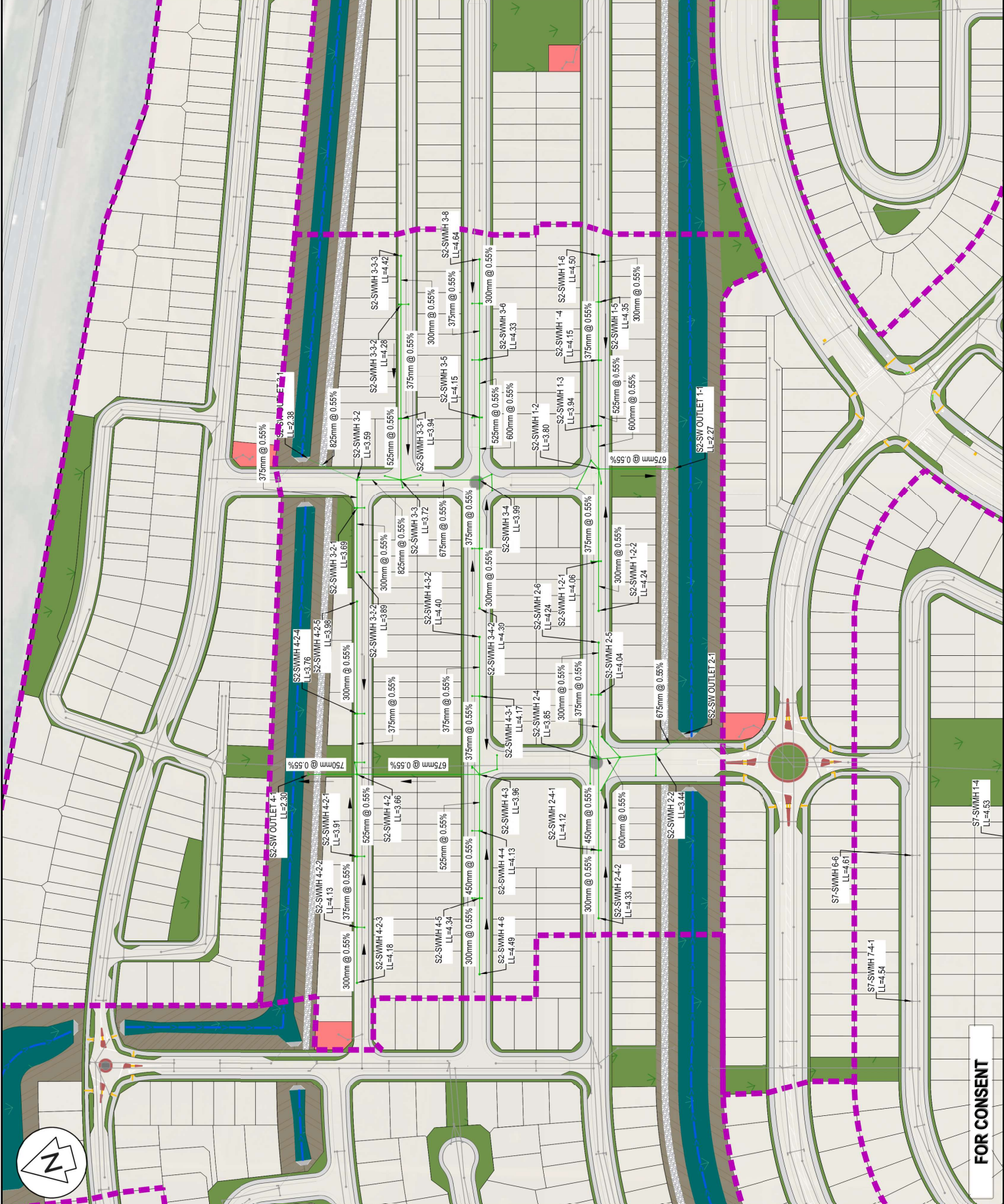
Rev	Description	By	Date
A	FOR REVIEW	MB	12/25
B	FOR CONSENT	MB	03/26

M A E N
 Naven Bay of Plenty
 115 Cameron Street, Tauranga
 New Zealand

Project
 WAIRAKEI SOUTH FTA090
 DEVELOPMENT
 BELL ROAD, PAPAMOA
 FOR BELL ROAD
 LIMITED PARTNERSHIP

Title
 PROPOSED
 STORMWATER LAYOUT
 STAGE 2

Project no.	BOP0749
Scale	1:2000 @ A3
Client	SPRINGS CO. LTD
Drawing no.	C400-2-1
Rev	B



ORIGINAL SIZE: A3

FOR CONSENT

- NOTES**
1. ALL WORKS TO BE IN ACCORDANCE WITH WESTERN BAY OF PLENTY DEVELOPMENT CODE.
 2. CO-ORDINATES IN TERMS OF BAY OF PLENTY 2000.
 3. REDUCED LEVELS ARE IN TERMS OF NZVD 2016. IT IS THE CONTRACTORS RESPONSIBILITY TO LOCATE ALL SERVICES THAT MAY BE AFFECTED BY THEIR EXISTING UTILITIES.
 4. HEAVY DUTY MANHOLE COVERS AND FRAMES TO BE USED IN TRAFFICED AREAS. ALL MANHOLES SHALL HAVE STAINLESS GRATES INSTALLED.
 5. ALL LINES ARE TO BE RORRI CLASS 4 UNLESS SHOWN OTHERWISE.

LEGEND

- EX-BODY
- PROP BODY
- PROP STAGE BOY
- OVERLAND FLOW PATH
- PROP WASTEWATER
- PROP STORMWATER
- PROP SW MANHOLE
- PROP SW CATCHPIT
- PROP SW OUTLET
- WW PUMP STATIONS
- PROP WETLAND SWALE
- PROP SW RESERVE
- PROP BATTER SLOPE
- PROP RESERVE

Rev	Description	By	Date
B	FOR CONSENT	MB	03/26
A	FOR REVIEW	MB	12/25

Survey	MAVEN	Date	05/2025
Design	MB	11/25	
Drawn	MB	12/25	
Checked	CS	12/25	

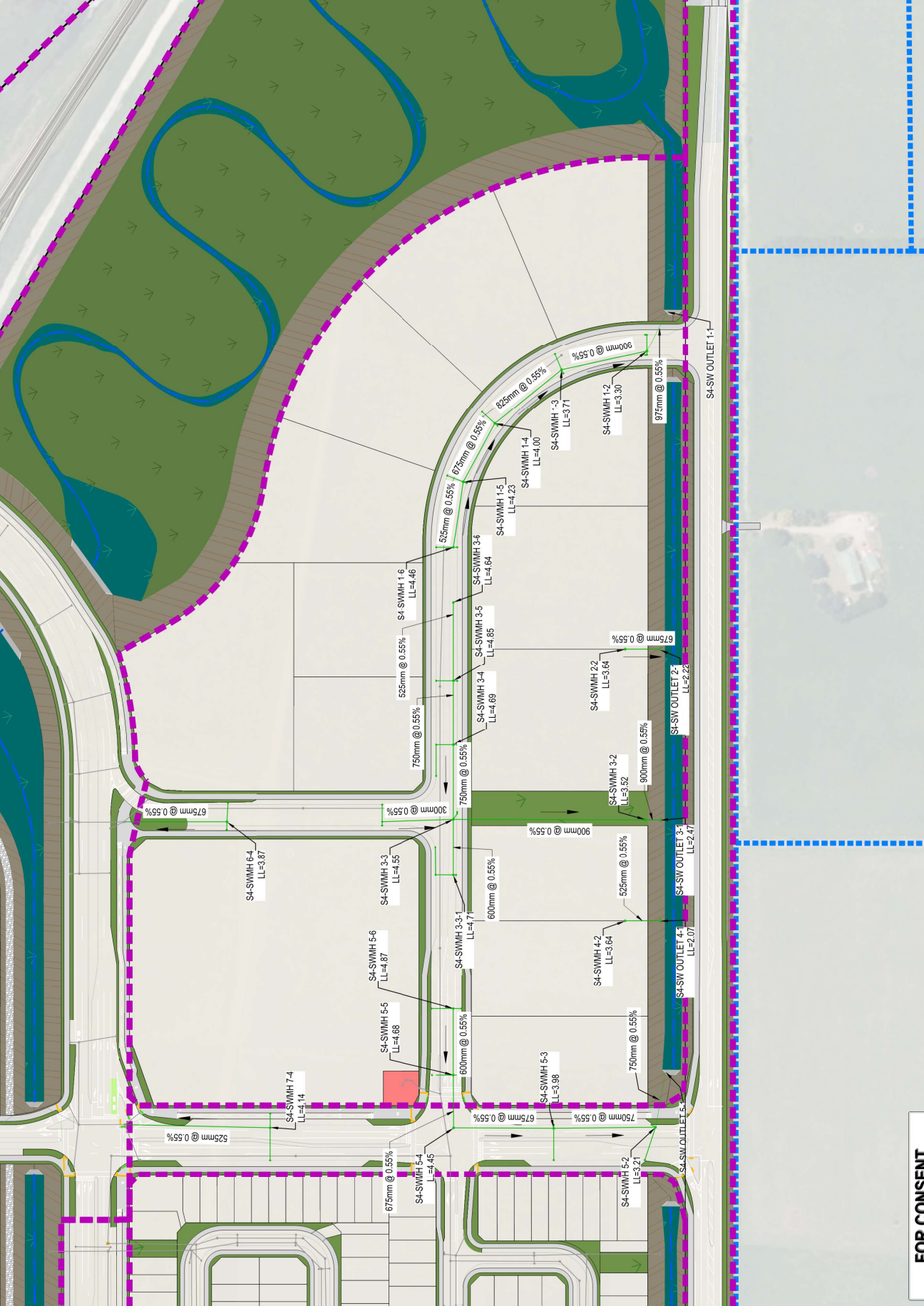
M A V E N

Naven Bay of Plenty
 115 Cameron Street, Tauranga
 New Zealand

Project
WAIRAKEI SOUTH FTA090 DEVELOPMENT
BELL ROAD, PAPAMOA
FOR BELL ROAD LIMITED PARTNERSHIP

Title
PROPOSED STORMWATER LAYOUT
STAGE 4

Project no.	BOP0749
Scale	1:2000 @ A3
Card file	spwres-cs04.dwg
Drawing no.	C400-4-1
Rev	B



ORIGINAL SIZE: A3

FOR CONSENT

- NOTES**
1. ALL WORKS TO BE IN ACCORDANCE WITH WESTERN BAY OF PLENTY DEVELOPMENT CODE.
 2. CO-ORDINATES IN TERMS OF BAY OF PLENTY 2000.
 3. REDUCED LEVELS ARE IN TERMS OF NZVD 2016. IT IS THE CONTRACTOR'S RESPONSIBILITY TO LOCATE ALL SERVICES THAT MAY BE AFFECTED BY THEIR OWN WORK.
 4. HEAVY DUTY MANHOLE FLIDS AND FRAMES TO BE USED IN TRAFFICKED AREAS. ALL MANHOLES SHALL HAVE STAINLESS GRATES INSTALLED.
 5. ALL LINES ARE TO BE RORRI CLASS 4 UNLESS SHOWN OTHERWISE.



Rev	Description	By	Date
B	FOR CONSENT	MB	03/26
A	FOR REVIEW	MB	12/25

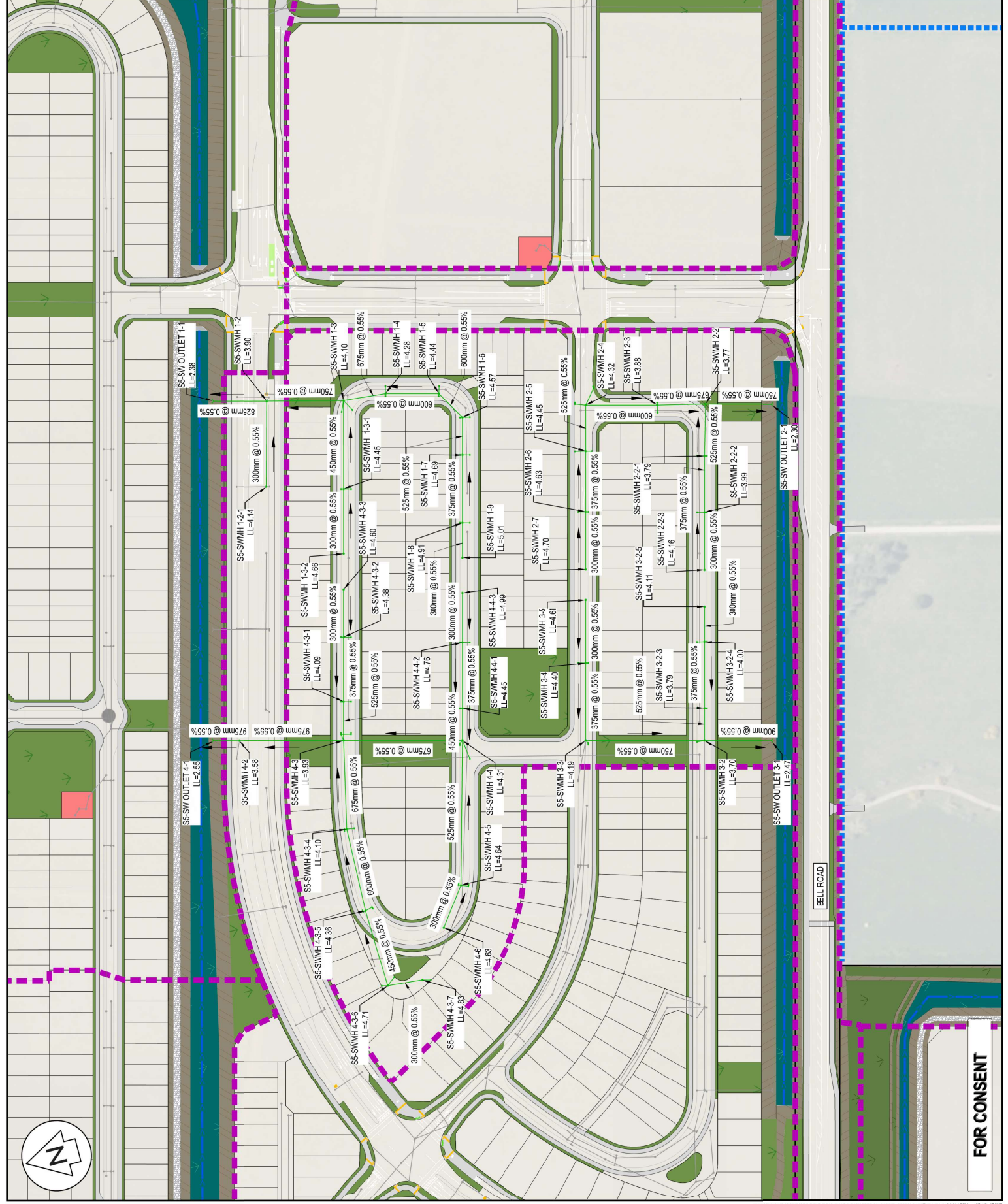
Survey	MAVEN	Date
Design	MB	11/25
Drawn	MB	12/25
Checked	CS	12/25



Project
WAIRAKEI SOUTH FTA090 DEVELOPMENT
BELL ROAD, PAPAMOA
FOR BELL ROAD LIMITED PARTNERSHIP

Title
PROPOSED STORMWATER LAYOUT
STAGE 5

Project no. BOP0749
Scale 1:2000 @ A3
Card file s3p015-c000.dwg
Drawing no. C400-5-1
Rev B



- NOTES**
1. ALL WORKS TO BE IN ACCORDANCE WITH WESTERN BAY OF PLENTY DEVELOPMENT CODE.
 2. CO-ORDINATES IN TERMS OF BAY OF PLENTY 2000.
 3. REDUCED LEVELS ARE IN TERMS OF NZGD 2016. IT IS THE CONTRACTORS RESPONSIBILITY TO LOCATE ALL SERVICES THAT MAY BE AFFECTED BY THEIR HEAVY DUTY MANKO FLUIDS AND FRAMES TO BE USED IN TRAFFICED AREAS. ALL MANHOLES SHALL HAVE STAINLESS GRATES INSTALLED.
 4. ALL LINES ARE TO BE RORRI CLASS 4 UNLESS SHOWN OTHERWISE.



Rev	Description	By	Date
B	FOR CONSENT	MB	03/26
A	FOR REVIEW	MB	12/25

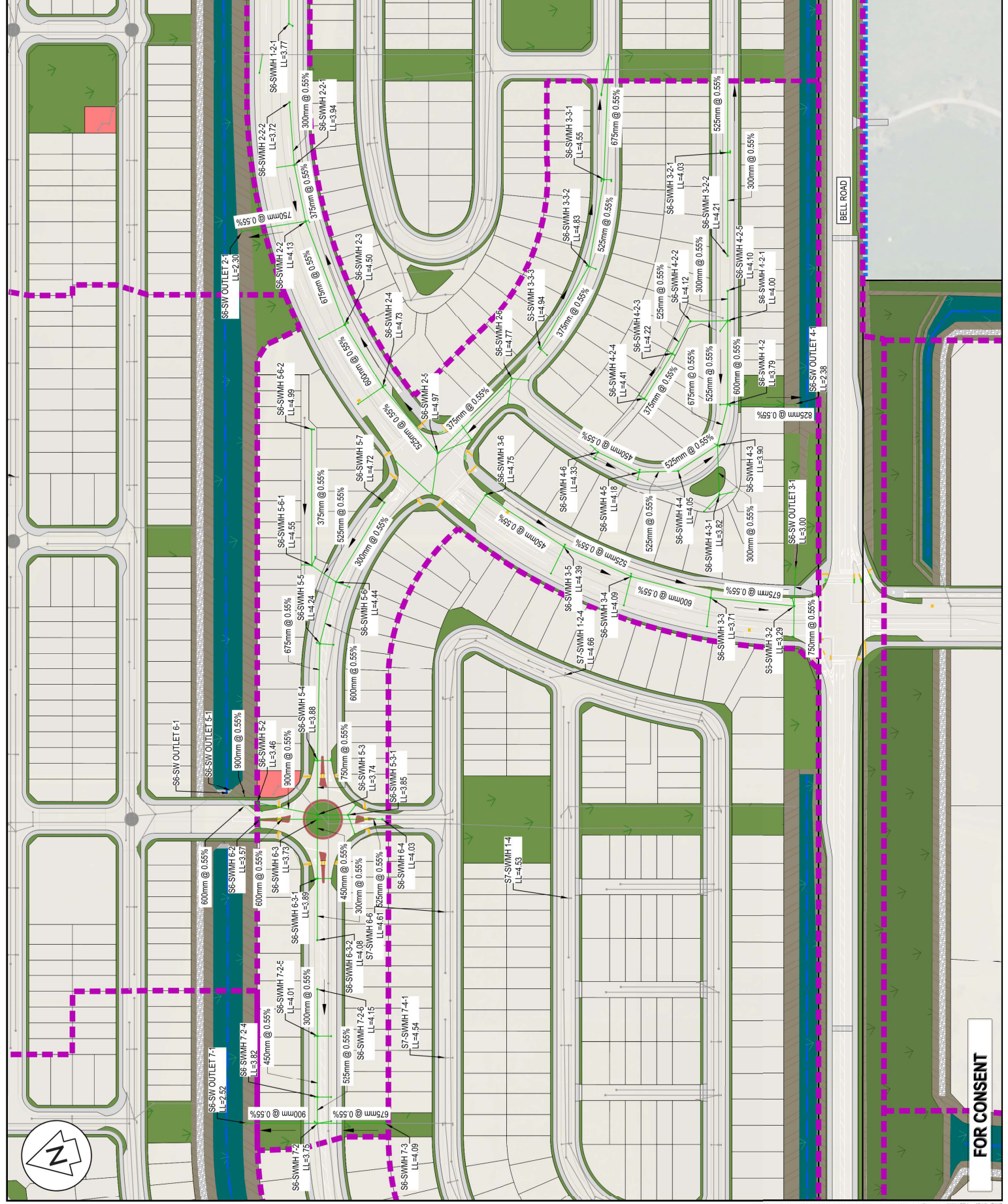
Survey	MAVEN	05/2025
Design	MB	11/25
Drawn	MB	12/25
Checked	CS	12/25

Maven Bay of Plenty
 115 Cameron Street, Tauranga
 New Zealand

Project
WAIRAKEI SOUTH FTA090
DEVELOPMENT
BELL ROAD, PAPAMOA
FOR BELL ROAD
LIMITED PARTNERSHIP

Proposed
STORMWATER LAYOUT
STAGE 6

Project no.	BOP0749
Scale	1:2000 @ A3
Card file	spwps-cso.dwg
Drawing no.	C400-6-1
Rev	B



ORIGINAL SIZE: A3

FOR CONSENT

- NOTES**
1. ALL WORKS TO BE IN ACCORDANCE WITH WESTERN BAY OF PLENTY DEVELOPMENT CODE.
 2. CO-ORDINATES IN TERMS OF PLENTY 2000.
 3. REDUCED LEVELS ARE IN TERMS OF NZVD 2016. IT IS THE CONTRACTORS RESPONSIBILITY TO LOCATE ALL SERVICES THAT MAY BE AFFECTED BY THEIR PROPOSED DEVELOPMENT.
 4. HEAVY DUTY MANHOLE LIDS AND FRAMES TO BE USED IN TRAFFICKED AREAS. ALL MANHOLES SHALL HAVE STAINLESS GRATES INSTALLED.
 5. ALL LINES ARE TO BE RORRI CLASS A UNLESS SHOWN OTHERWISE.

LEGEND

- EX-BODY
- PROP BODY
- PROP STAGE BODY
- OVERLAND FLOW PATH
- PROP WASTEWATER
- PROP STORMWATER
- PROP SW MANHOLE
- PROP SW CATCHPIT
- PROP SW OUTLET
- WW PUMP STATIONS
- PROP WETLAND SWALE
- PROP SW RESERVE
- PROP BATTER SLOPE
- PROP RESERVE

Rev	Description	By	Date
B	FOR CONSENT	MB	03/26
A	FOR REVIEW	MB	12/25

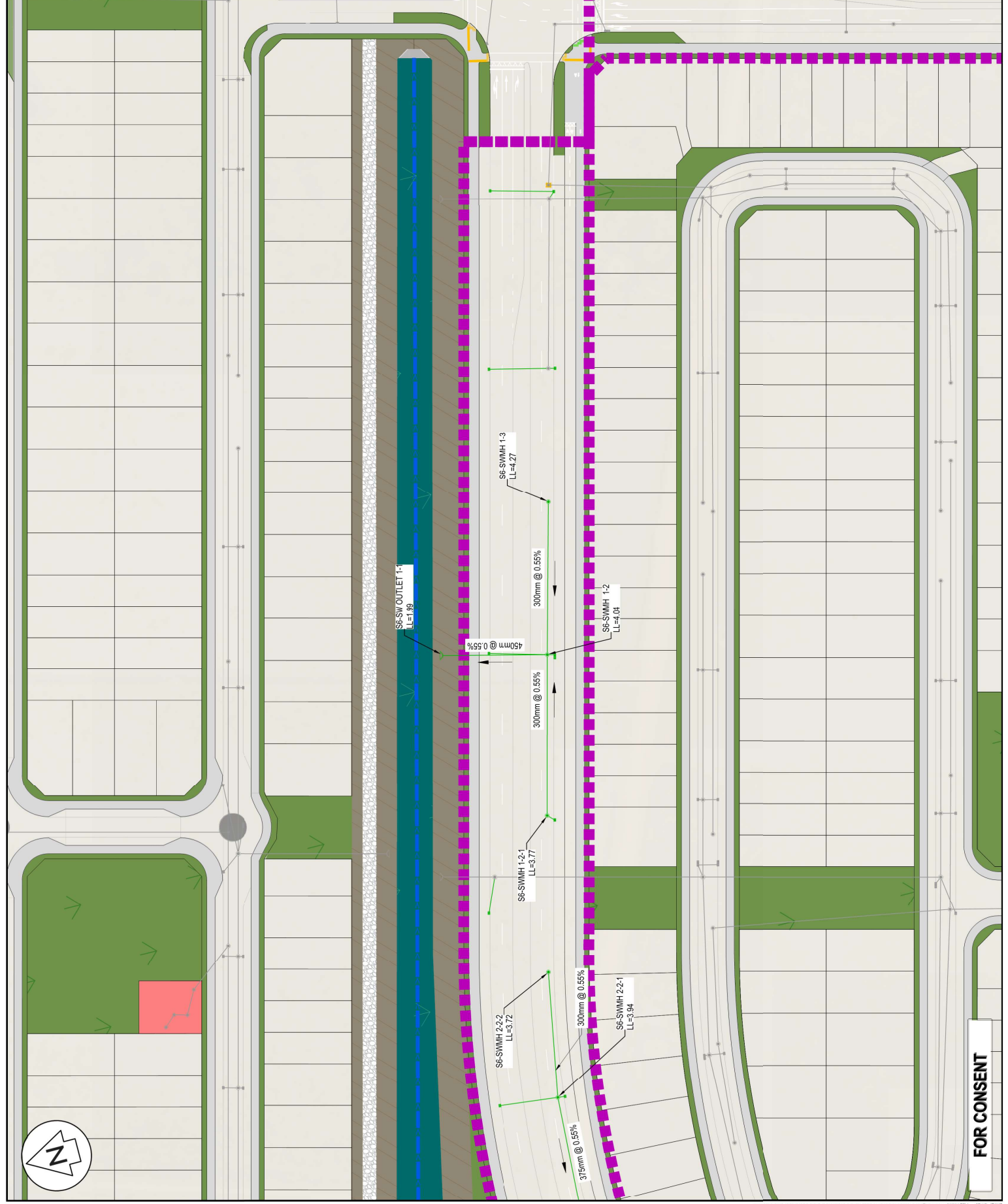
Survey	By	Date
MAVEN	MAVEN	05/20/25
Design	MB	11/25
Drawn	MB	12/25
Checked	CS	12/25



Project
WAIRAKEI SOUTH FTA090
DEVELOPMENT
BELL ROAD, PAPAMOA
FOR BELL ROAD
LIMITED PARTNERSHIP

Title
PROPOSED
STORMWATER LAYOUT
STAGE 6

Project no.	BOP0749
Scale	1:1000 @ A3
Card file	BP0195-0400.DWG
Drawing no.	C400-6-2
Rev	B



ORIGINAL SIZE: A3

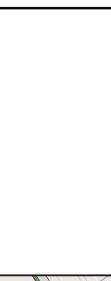
FOR CONSENT

- NOTES**
1. ALL WORKS TO BE IN ACCORDANCE WITH WESTERN BAY OF PLENTY DEVELOPMENT CODE.
 2. CO-ORDINATES IN TERMS OF BAY OF PLENTY 2000.
 3. REDUCED LEVELS ARE IN TERMS OF NZVD 2016. IT IS THE CONTRACTORS RESPONSIBILITY TO LOCATE ALL SERVICES THAT MAY BE AFFECTED BY THEIR EXISTING UTILITY NETWORKS AND FRAMES TO BE USED IN TRAFFICED AREAS. ALL MANHOLES SHALL HAVE STAINLESS GRATES INSTALLED.
 4. HEAVY DUTY MANHOLE ELDS AND FRAMES TO BE SHOWN OTHERWISE.
 5. ALL LINES ARE TO BE CORRI CLASS 4 UNLESS SHOWN OTHERWISE.



Rev	Description	By	Date
B	FOR CONSENT	MB	03/26
A	FOR REVIEW	MB	12/25

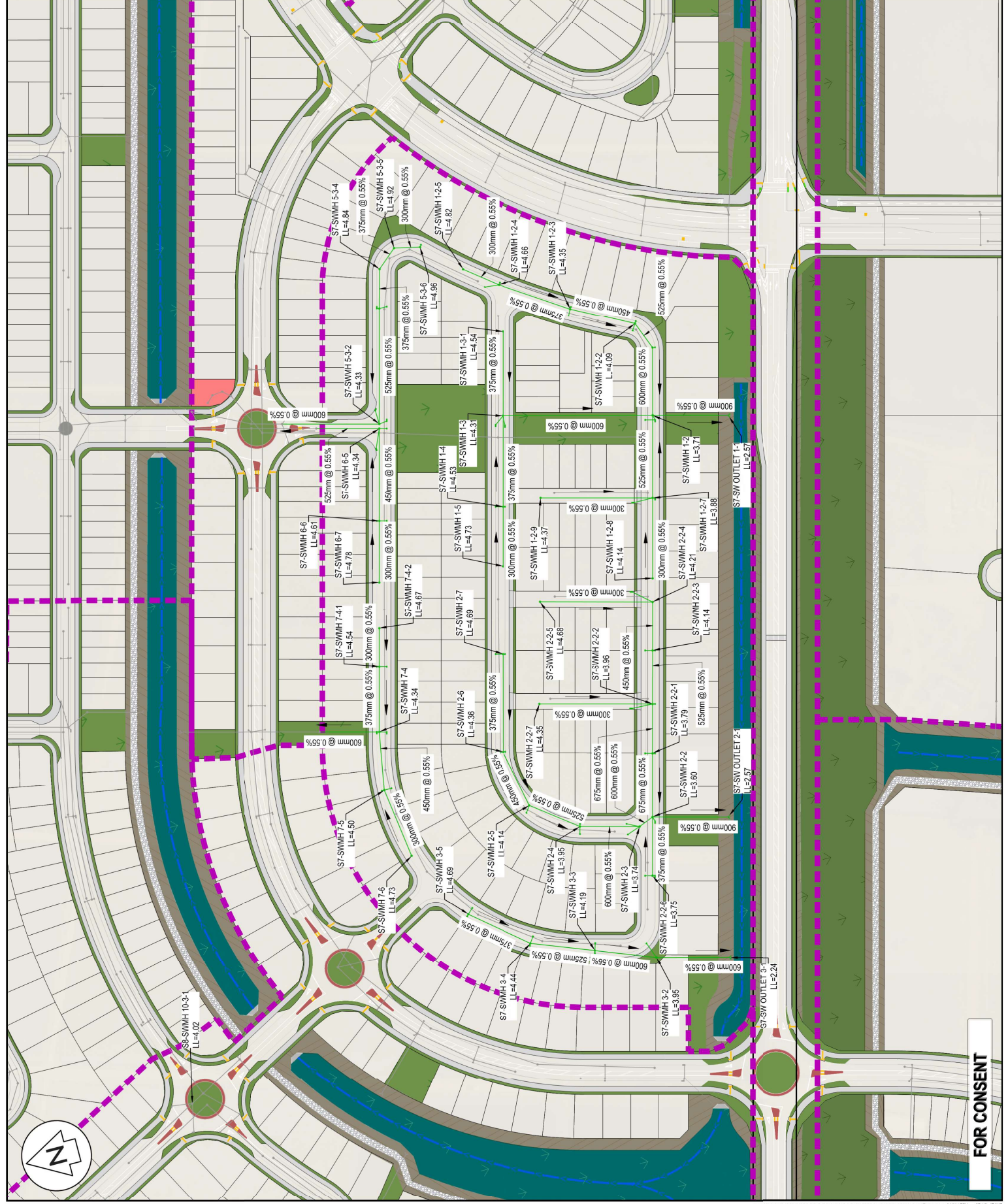
Survey	MAVEN	Date	05/2025
Design	MB	11/25	
Drawn	MB	12/25	
Checked	CS	12/25	



Project
WAIRAKEI SOUTH FTA090 DEVELOPMENT
BELL ROAD, PAPAMOA
FOR BELL ROAD LIMITED PARTNERSHIP

Title
PROPOSED STORMWATER LAYOUT
STAGE 7

Project no.	BOP0749
Scale	1:2000 @ A3
Card file	spwps-cs00.dwg
Drawing no.	C400-7-1
Rev	B



ORIGINAL SIZE: A3

FOR CONSENT