

Hananui Aquaculture Project.

Ngāi Tahu Seafood.

Graphic Attachments.

November 2025

Isthmus.

Land.
People.
Culture.



Document record				
Issue	Revision	Author	QA	Date
Draft	A	AE/SF/ET	AA/BC	01.08.2025
Draft	B	AE/SF/AA	BC	22.08.2025
Final	C	AE	BC	3.11.2025

Contents

Figure 01 - Broad Site Context.	4
Figure 02 - Local Site Context.	5
Figure 03 - Site Context - Topographical Map.	6
Figure 04 - Recreational Access Map.	7
Figure 05 - District Plan Statutory Context.	8
Figure 06 - Regional Plan Statutory Context.	9
Figure 07 - Quota Management Areas.	10
Figure 08 - Net Pen General Configuration.	12
Figure 09 - Scale AQ Floating Collar Model.	12
Figure 10 - Proposed Semi-Rigid Single-Wall Net Schematic.	13
Figure 11 - Profile View of Nets Underwater.	14
Figure 12 - AKVA Polarcirkel 500R plastic pens.	14
Figure 13 - Mooring Anchoring Schematic.	15
Figure 14 - Net Pen Mooring System.	15
Figure 15 - AKVA AC600 PV Feed Barge.	16
Figure 16 - Mooring Layout for Feed Barge.	16
Figure 17 - Navigation Maps.	17
Figure 18 - Lighting Maps.	18
Figure 19 - Viewpoint Location Map.	19
Figure 20 - Viewpoint 1 - EXISTING.	20
Figure 21 - Viewpoint 1 - PROPOSED.	22
Figure 22 - Viewpoint 2 - EXISTING.	24
Figure 23 - Viewpoint 2 - PROPOSED.	26
Figure 24 - Viewpoint 3.	28
Figure 25 - Viewpoint 4.	30
Figure 26 - Viewpoint 5 - EXISTING.	32
Figure 27 - Viewpoint 5 - PROPOSED.	34
Figure 28 - Viewpoint 6 - EXISTING.	36
Figure 29 - Viewpoint 6 - PROPOSED.	38
Figure 30 - Viewpoint 7 - EXISTING.	40

Figure 31 - Viewpoint 7 - PROPOSED.	42
Figure 32 - Viewpoint 8 - EXISTING.	44
Figure 33 - Viewpoint 8 - PROPOSED.	46
Figure 34 - Viewpoint 9 - EXISTING.	48
Figure 35 - Viewpoint 9 - PROPOSED.	50
Figure 36 - Viewpoint 10.	52
Figure 37 - Viewpoint 11.	54
Figure 38 - Viewpoint 12 - EXISTING.	56
Figure 39 - Viewpoint 12 - PROPOSED.	58
Figure 40 - Viewpoint 13.	60
Figure 41 - Viewpoint 14.	62
Figure 42 - Viewpoint DRONE - EXISTING.	64
Figure 43 - Viewpoint DRONE - PROPOSED.	66
Figure 44 - Viewpoint Hananui.	68
Methodology.	71



Figure 01 - Broad Site Context.

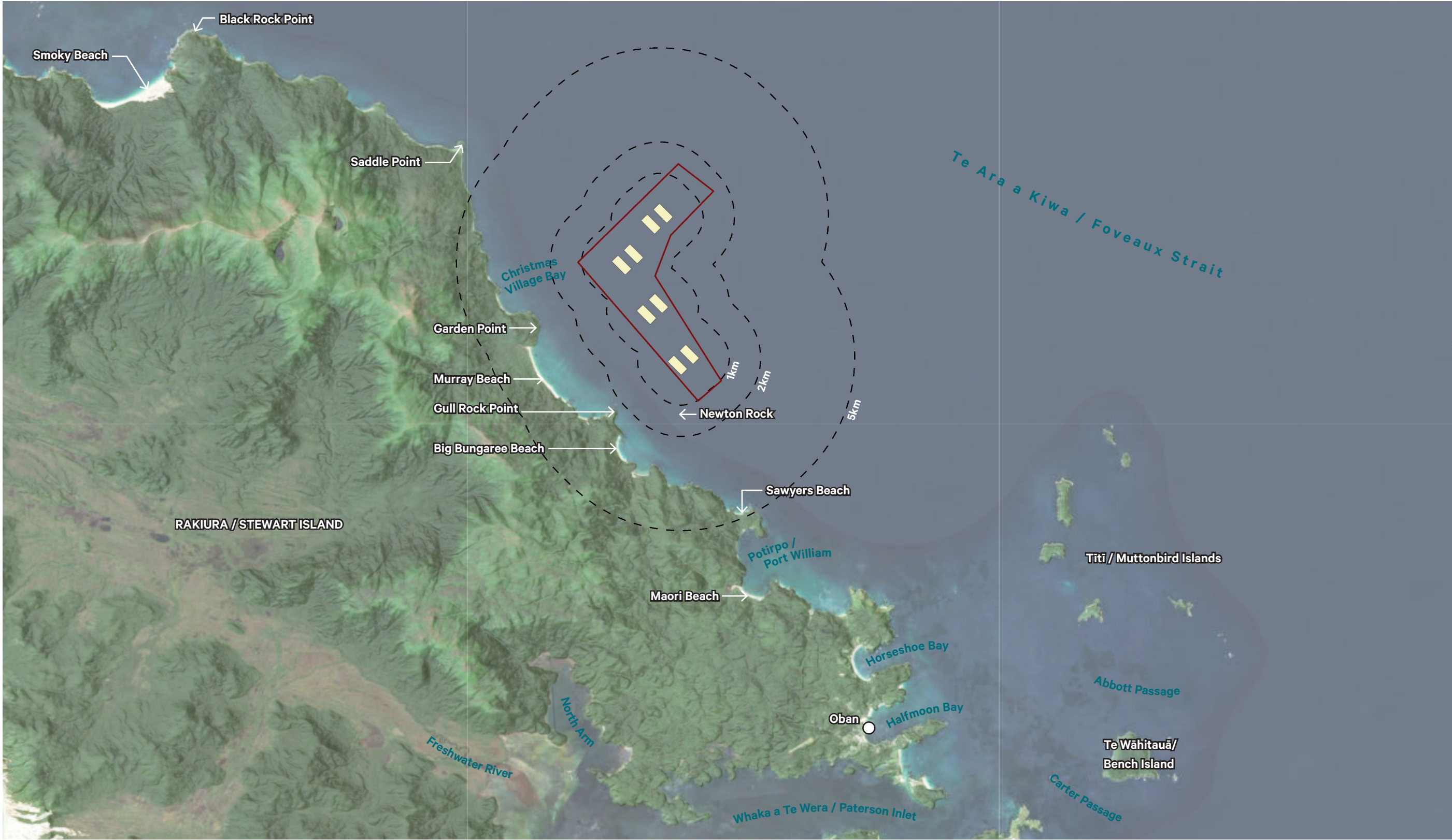
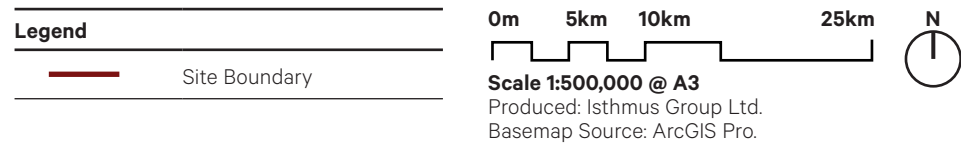


Figure 02 - Local Site Context.

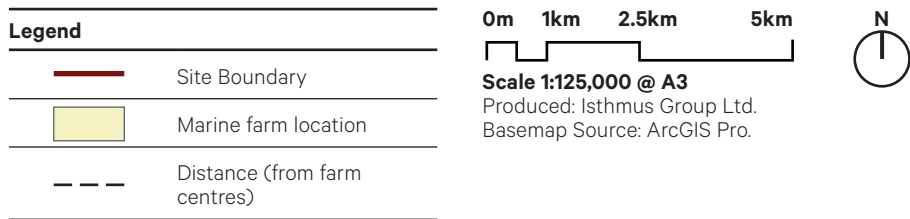




Figure 03 - Site Context - Topographical Map.

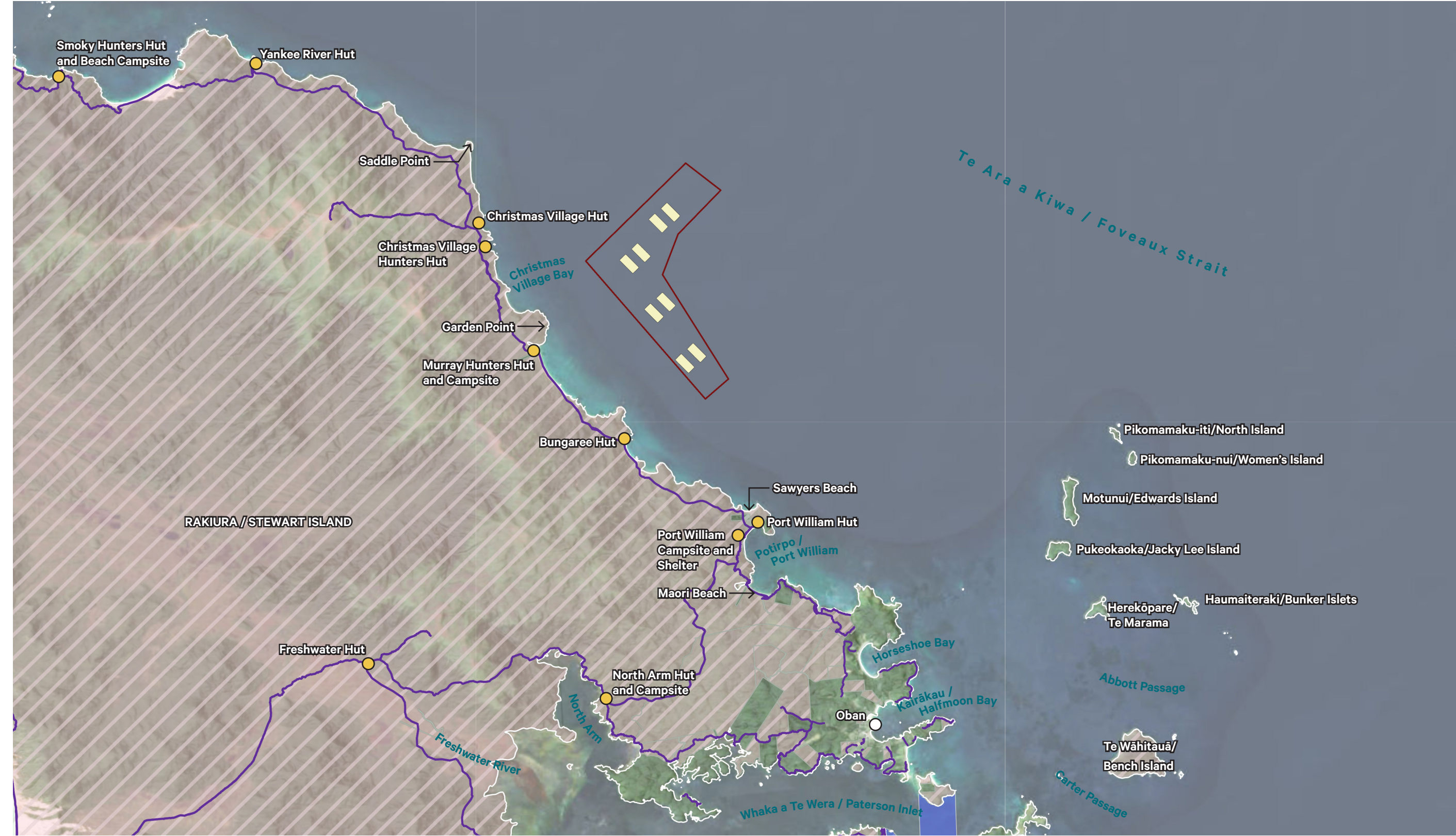
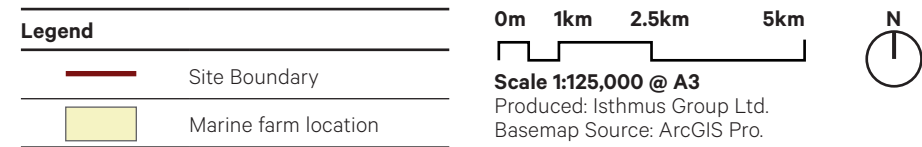
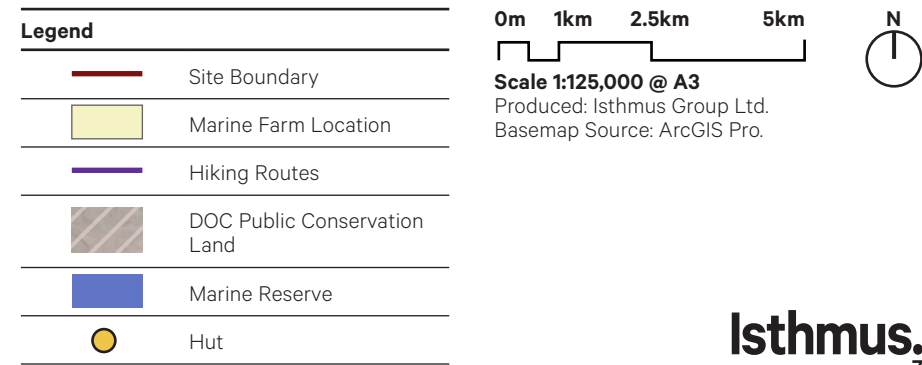


Figure 04 - Recreational Access Map.



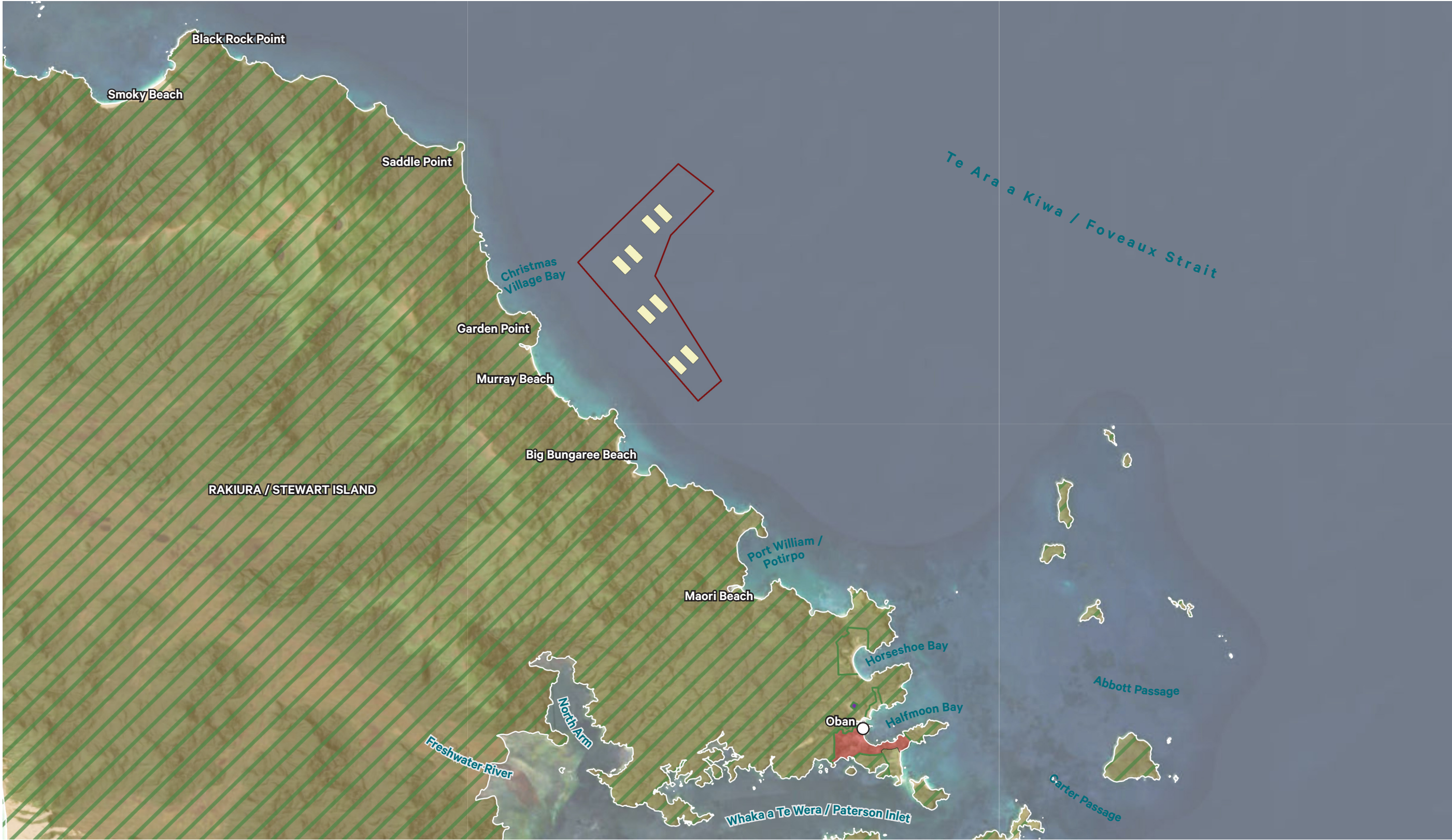


Figure 05 - District Plan Statutory Context.

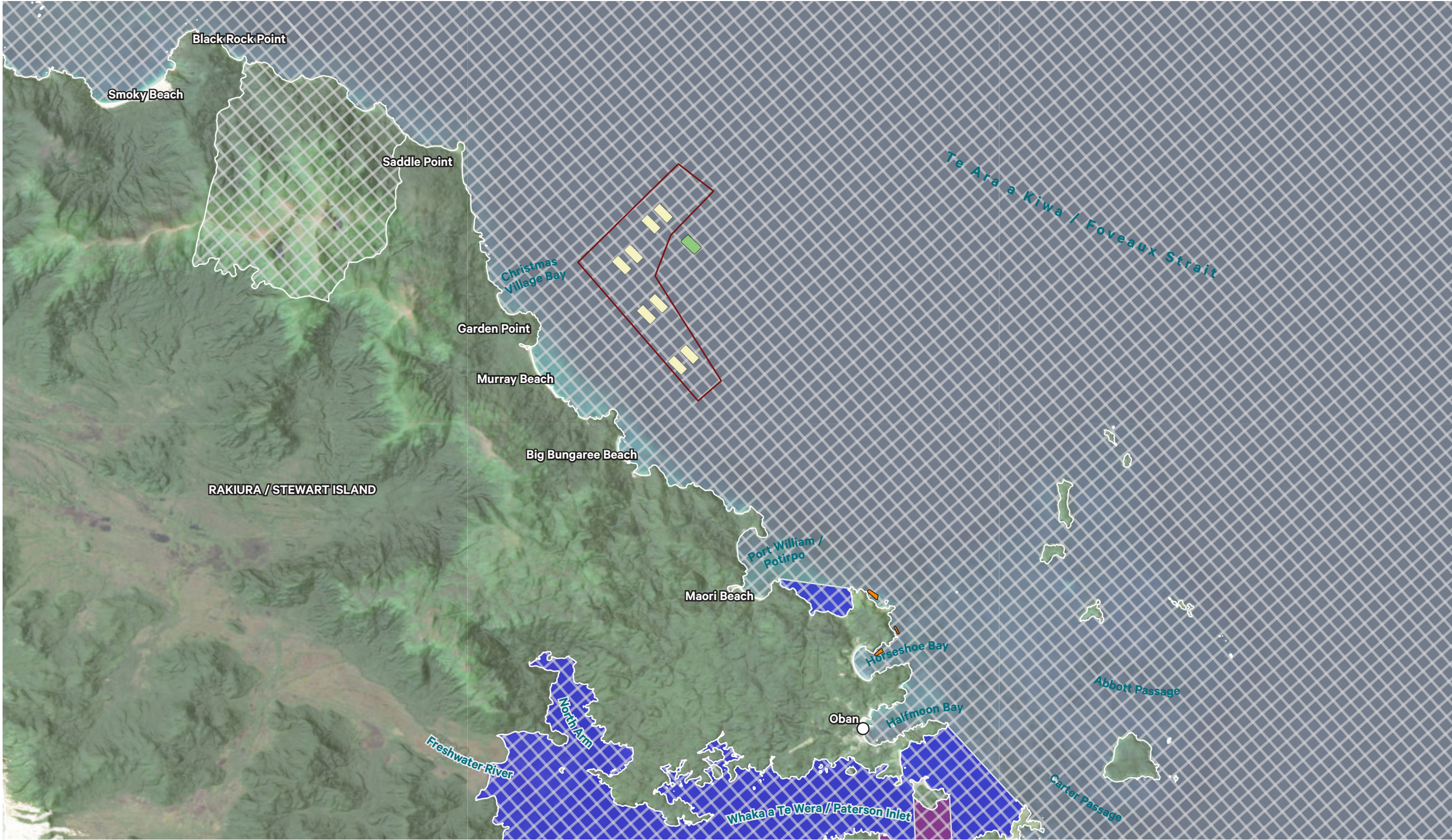
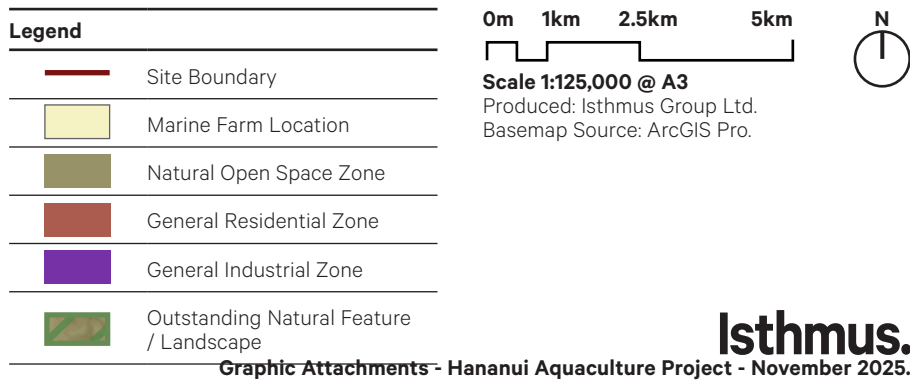
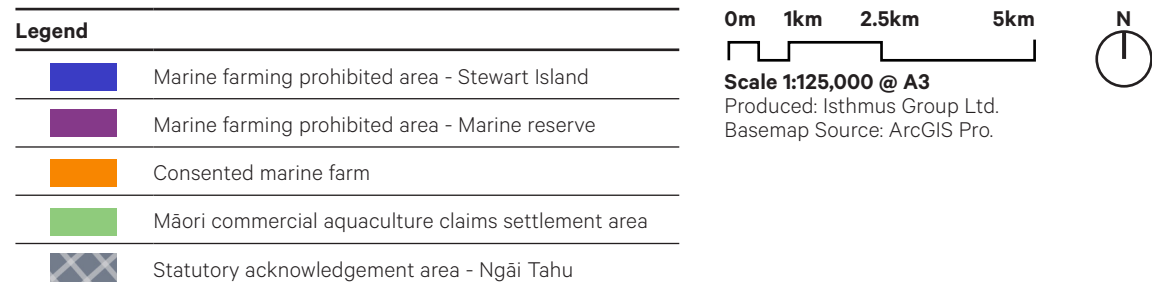


Figure 06 - Regional Plan Statutory Context.



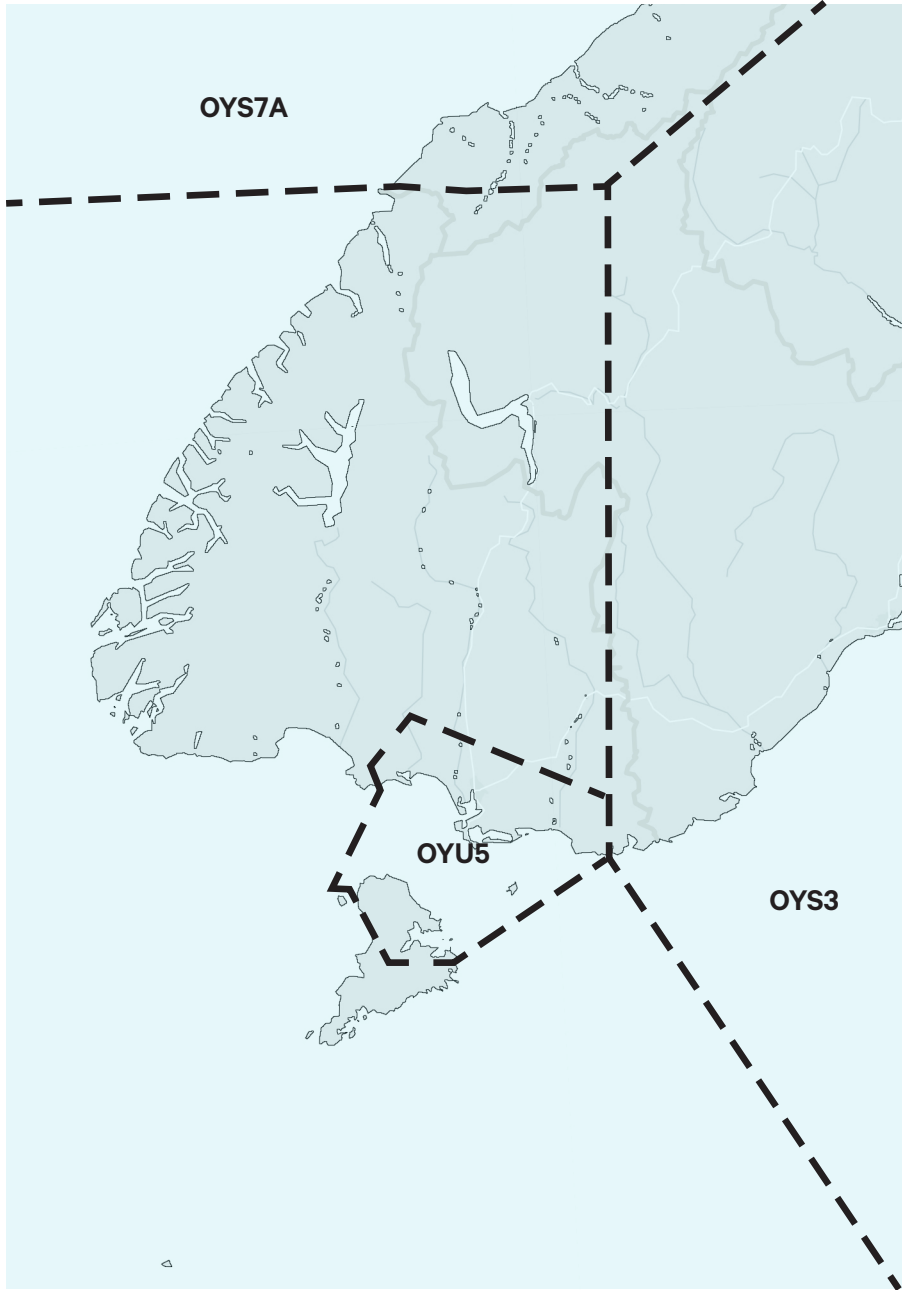


Figure 7A: Oyster

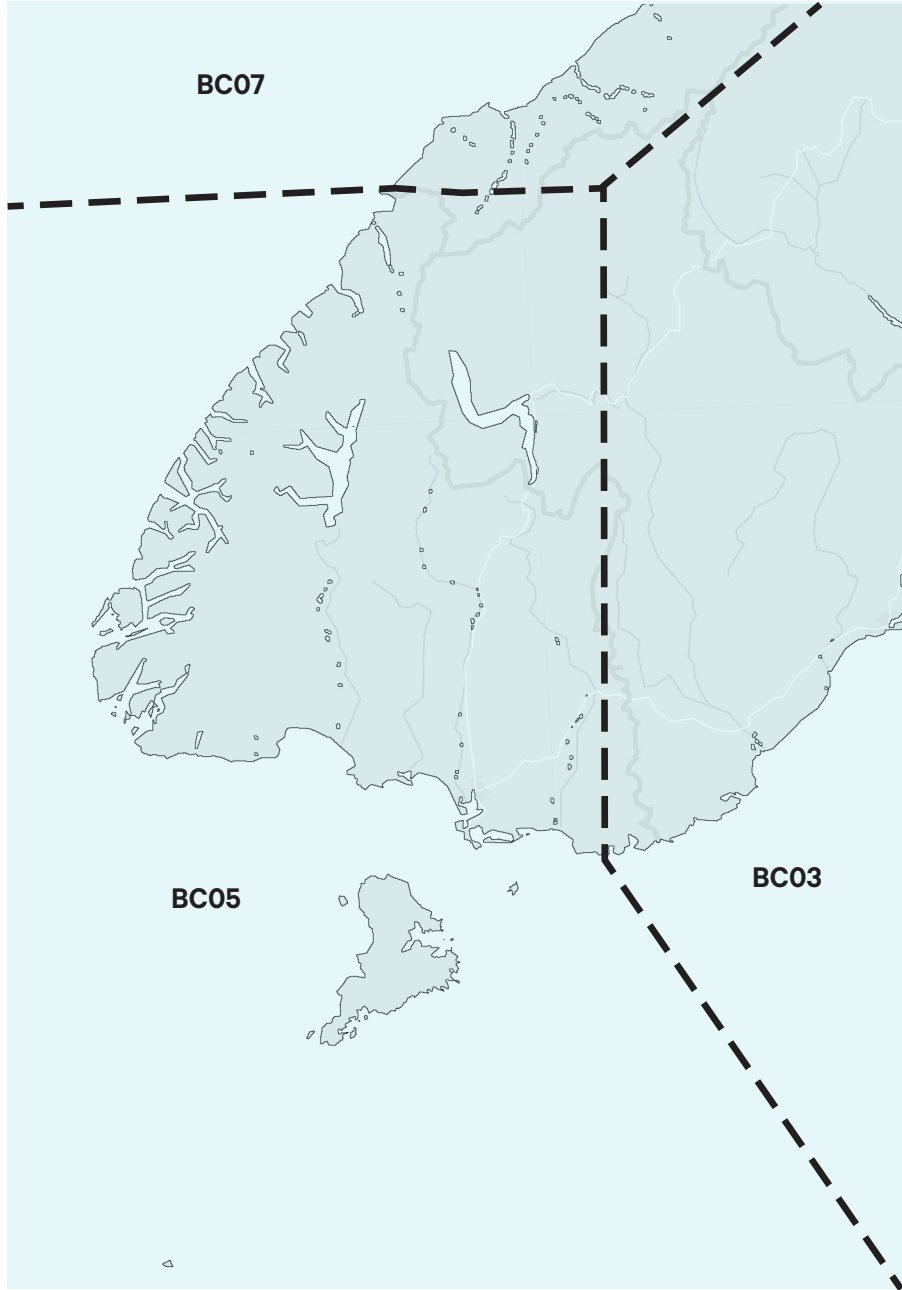


Figure 7B: Blue Cod

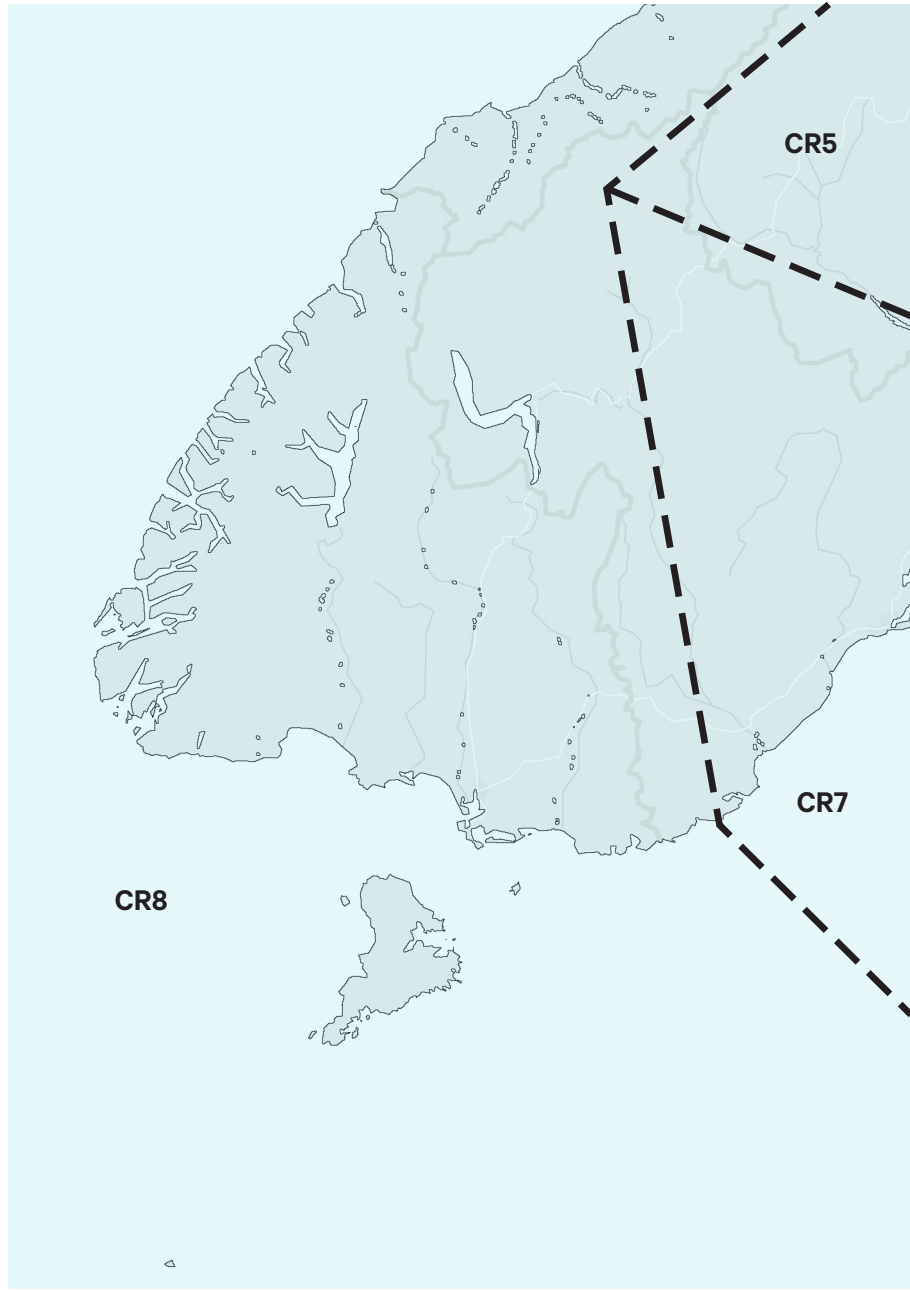


Figure 7C: Crayfish

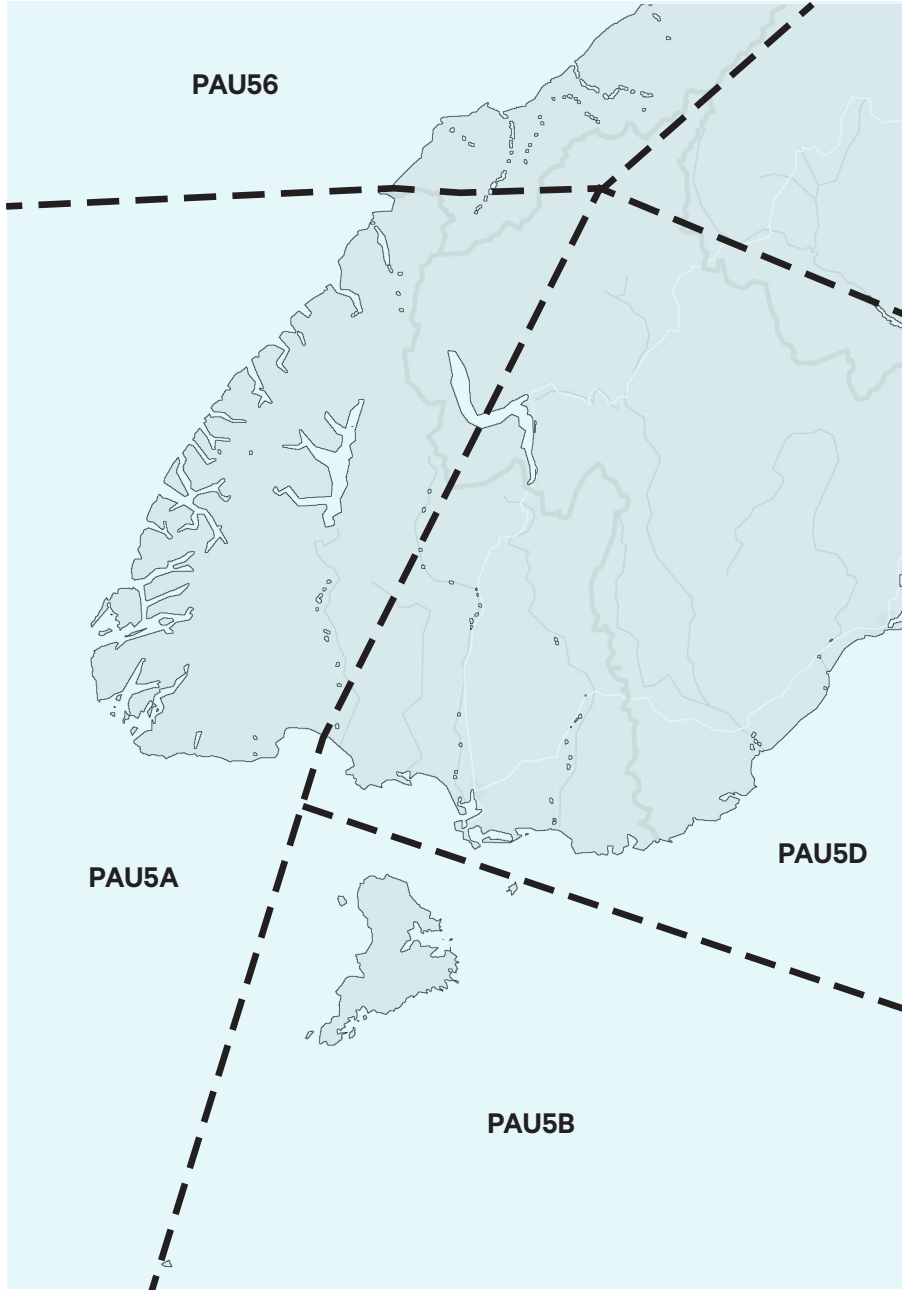


Figure 7D: Pua

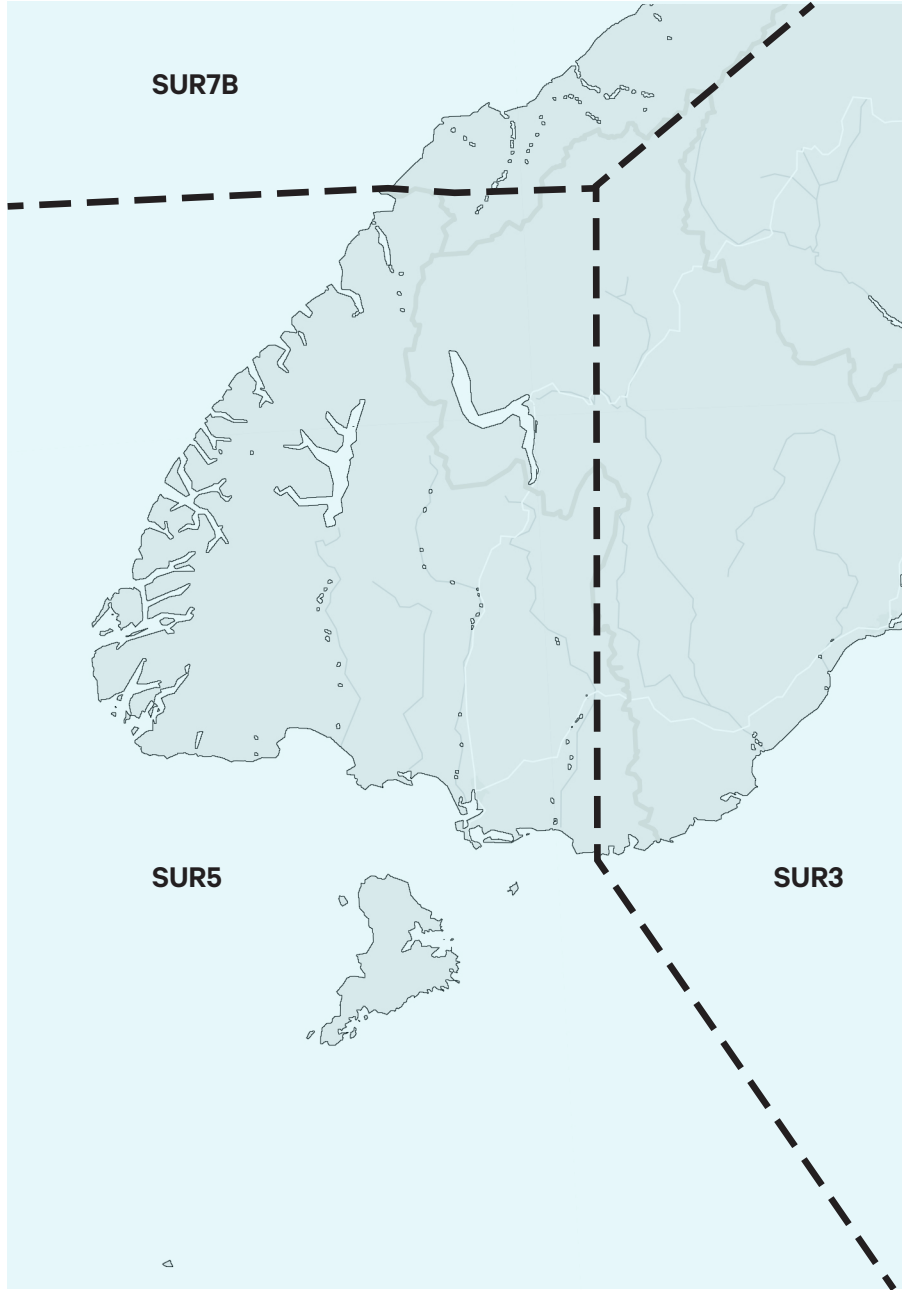


Figure 7E: Kina

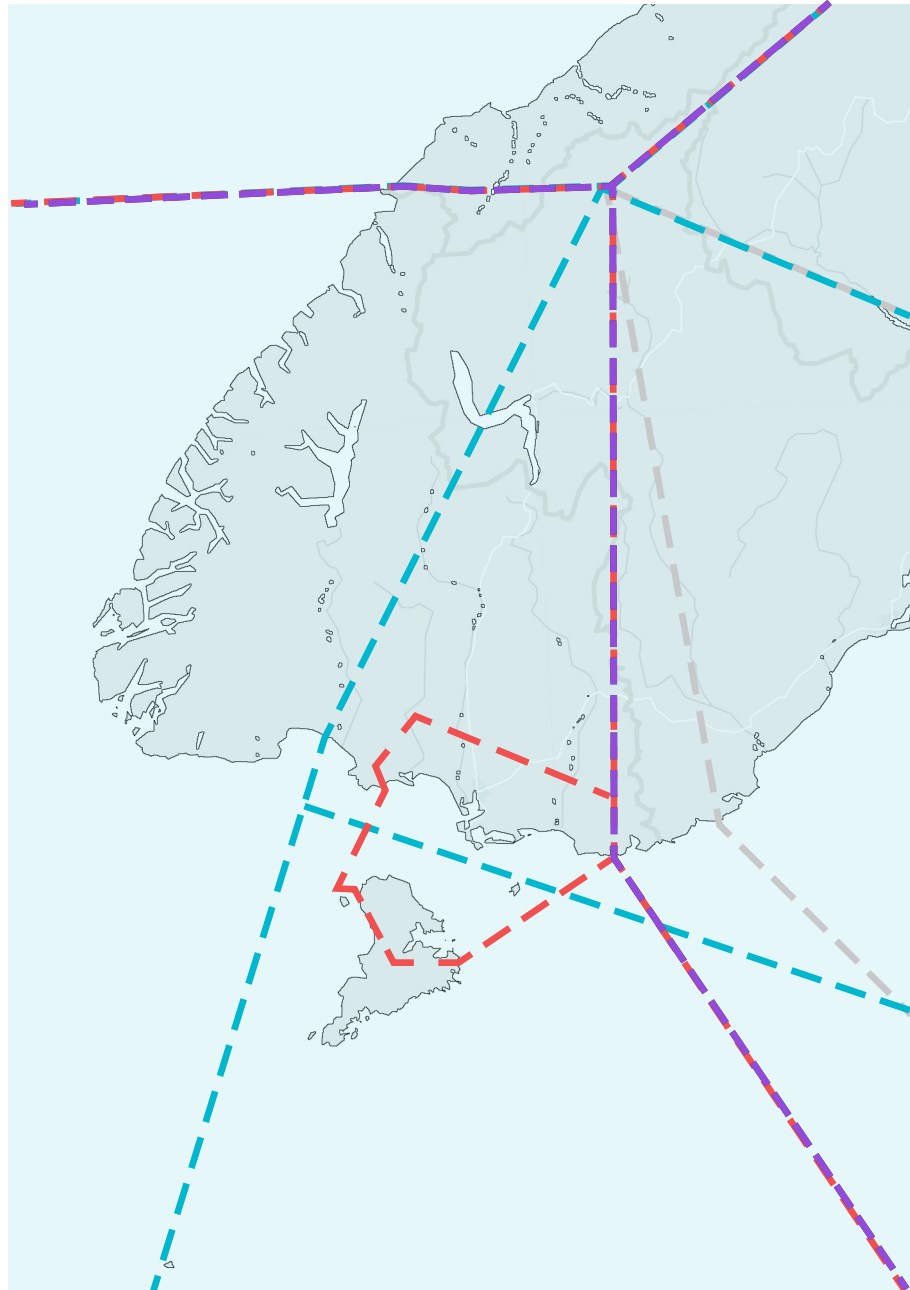


Figure 7F: COMBINED

- Oyster
- Blue Cod
- Crayfish
- Pua
- Kina

Figure 07 - Quota Management Areas.

Indicative locations of fishing quota management areas in the surrounding waters of Rakiura.

Scale 1:3,000,000 @ A3
Produced: Isthmus Group Ltd.
Basemap Source: ArcGIS Pro.

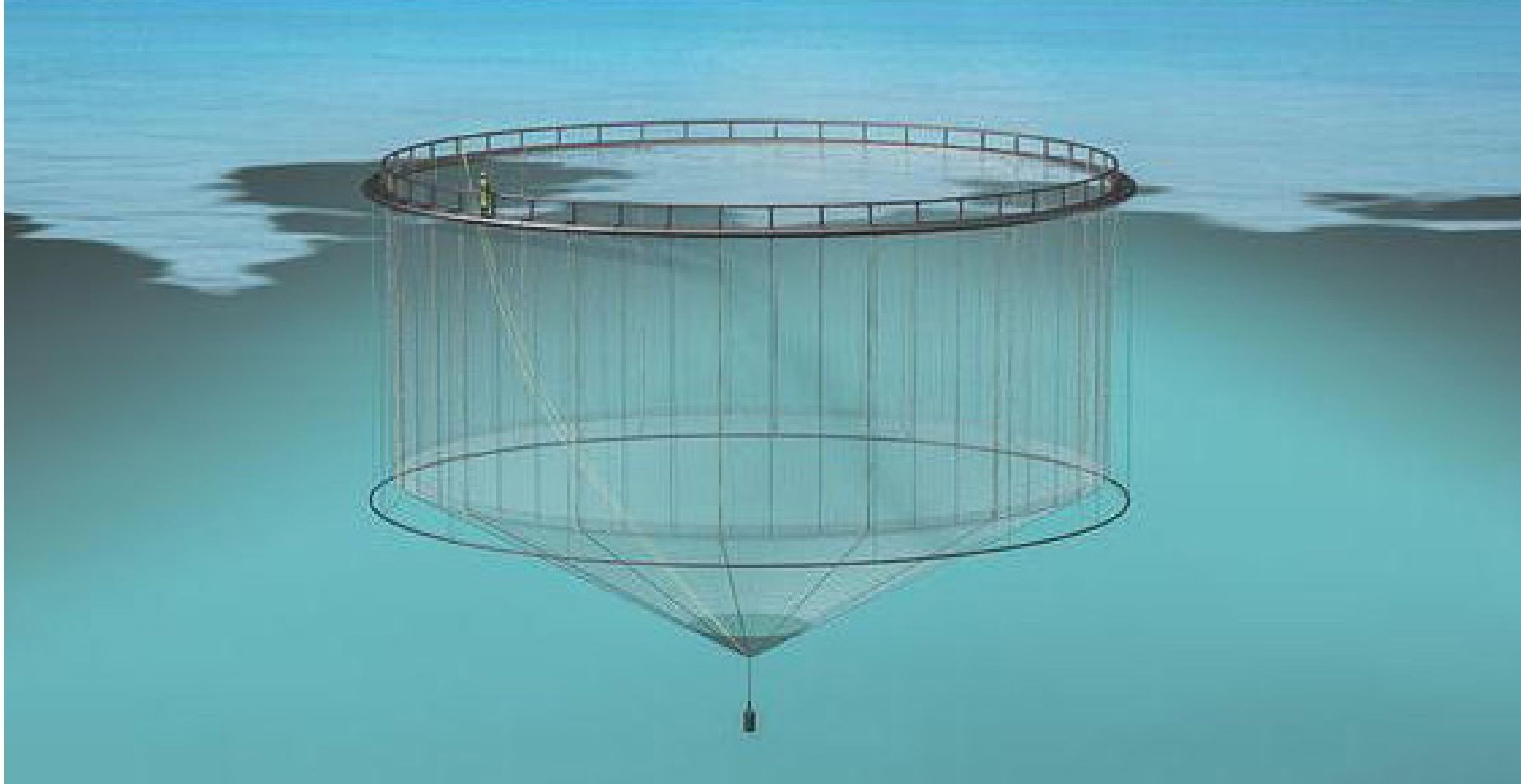


Figure 08 - Net Pen Diagram.

Image: DSA Ocean
Not to Scale

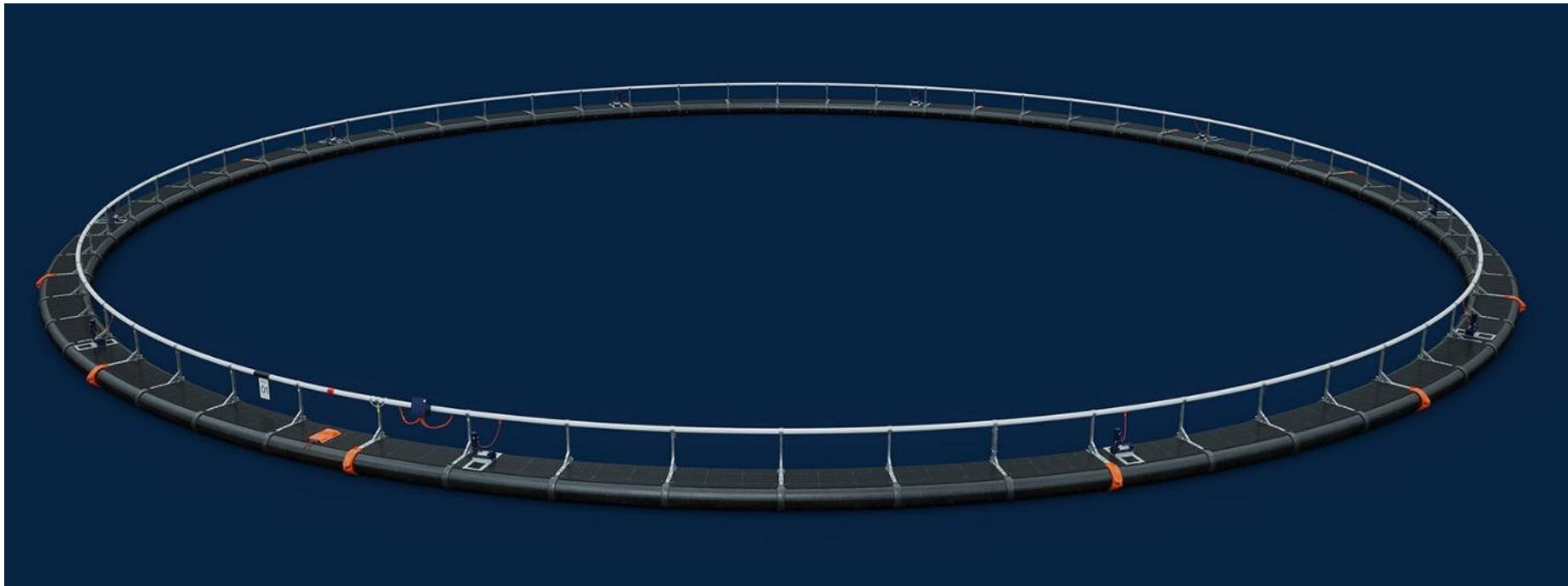


Figure 09 - Pen Scale Model.

Image: DSA Ocean
Not to Scale

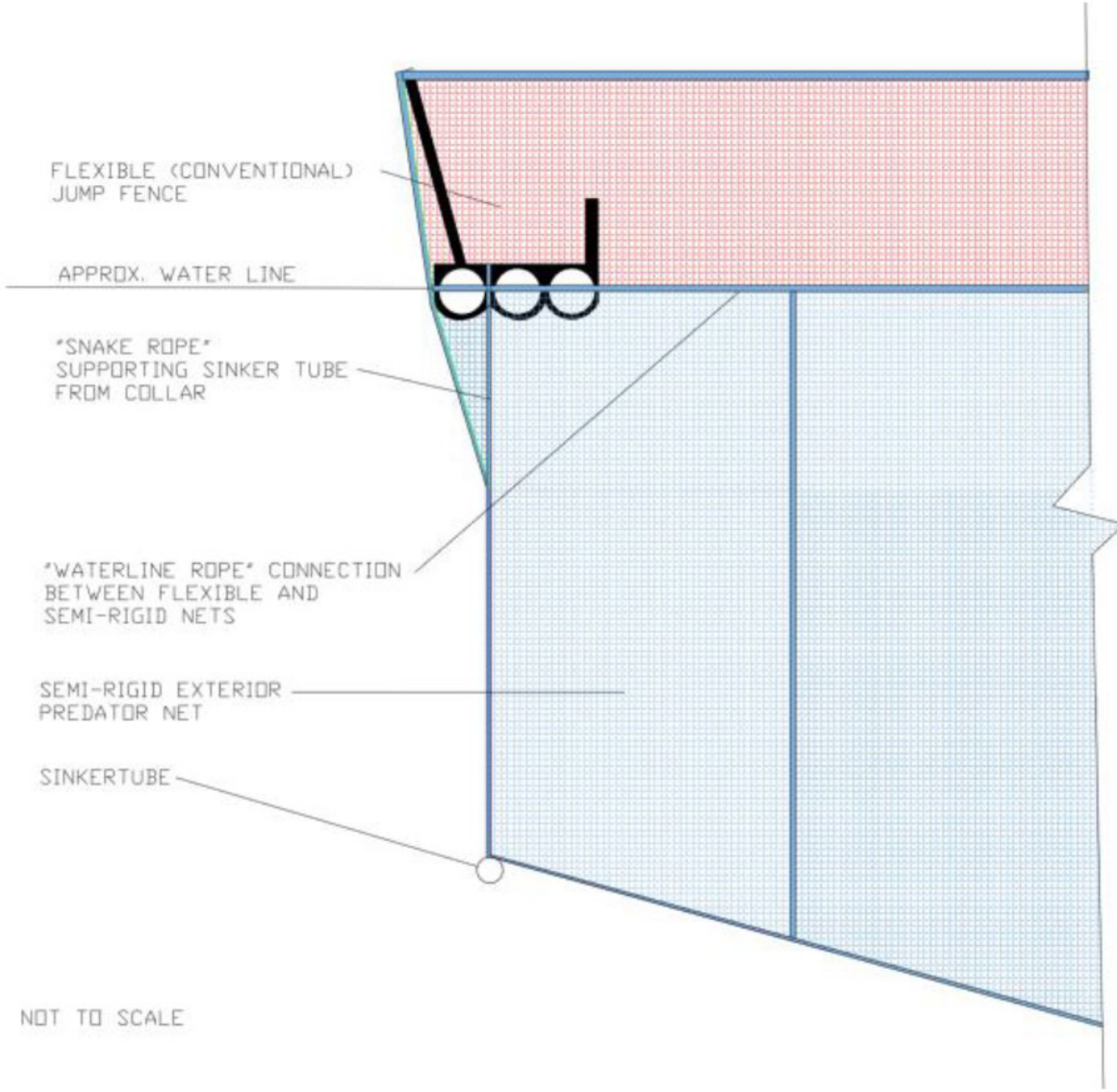


Figure 10 - Pen Cross Section.

Image: DSA Ocean
Not to Scale

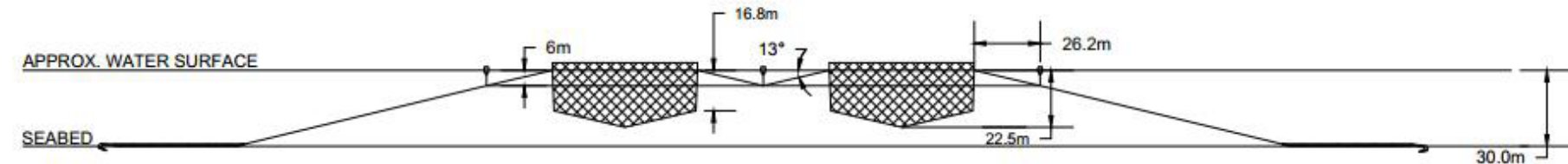


Figure 11 - Farm Cross Section.

Image: DSA Ocean
Not to Scale

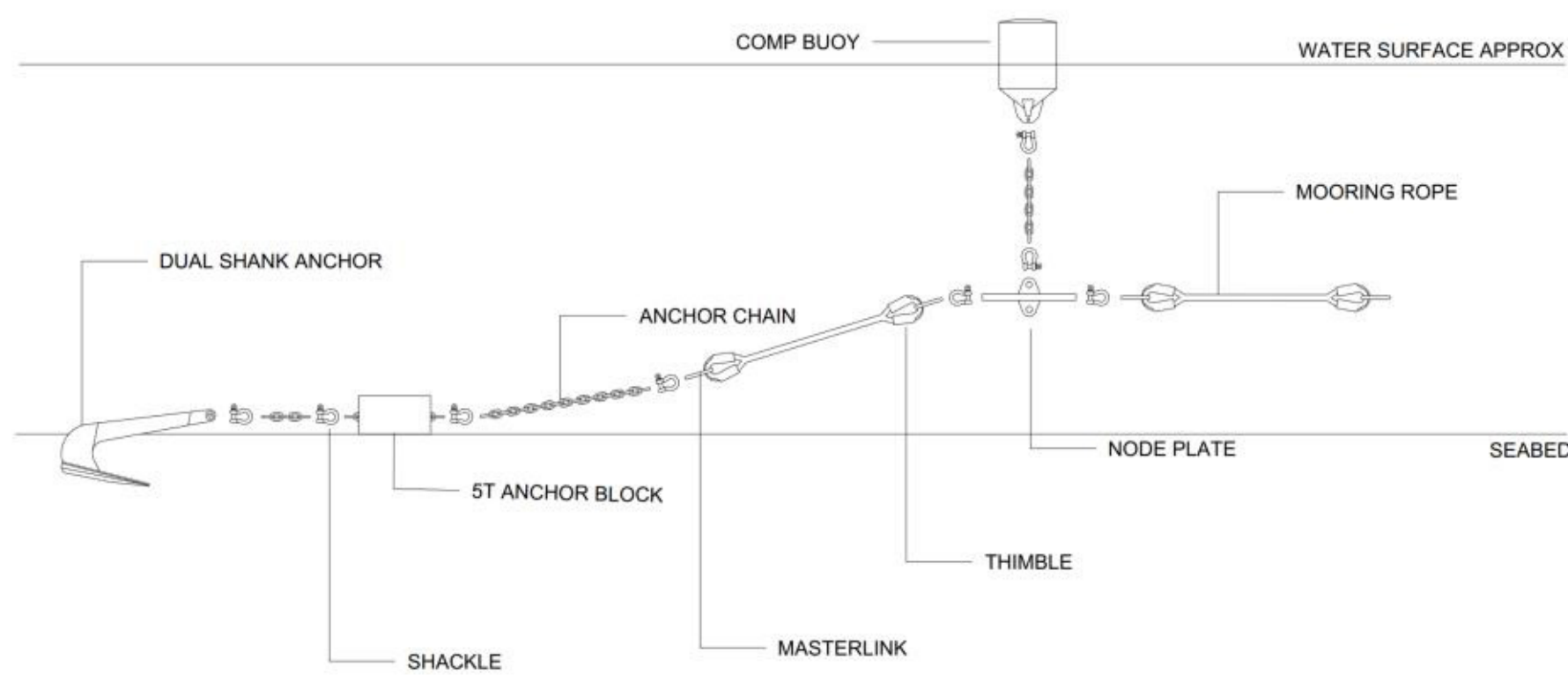


Figure 13 - Mooring Anchoring Scheme.

Image: DSA Ocean
Not to Scale



Figure 12 - Polar Circle Pen Photograph.

Image: DSA Ocean
Not to Scale

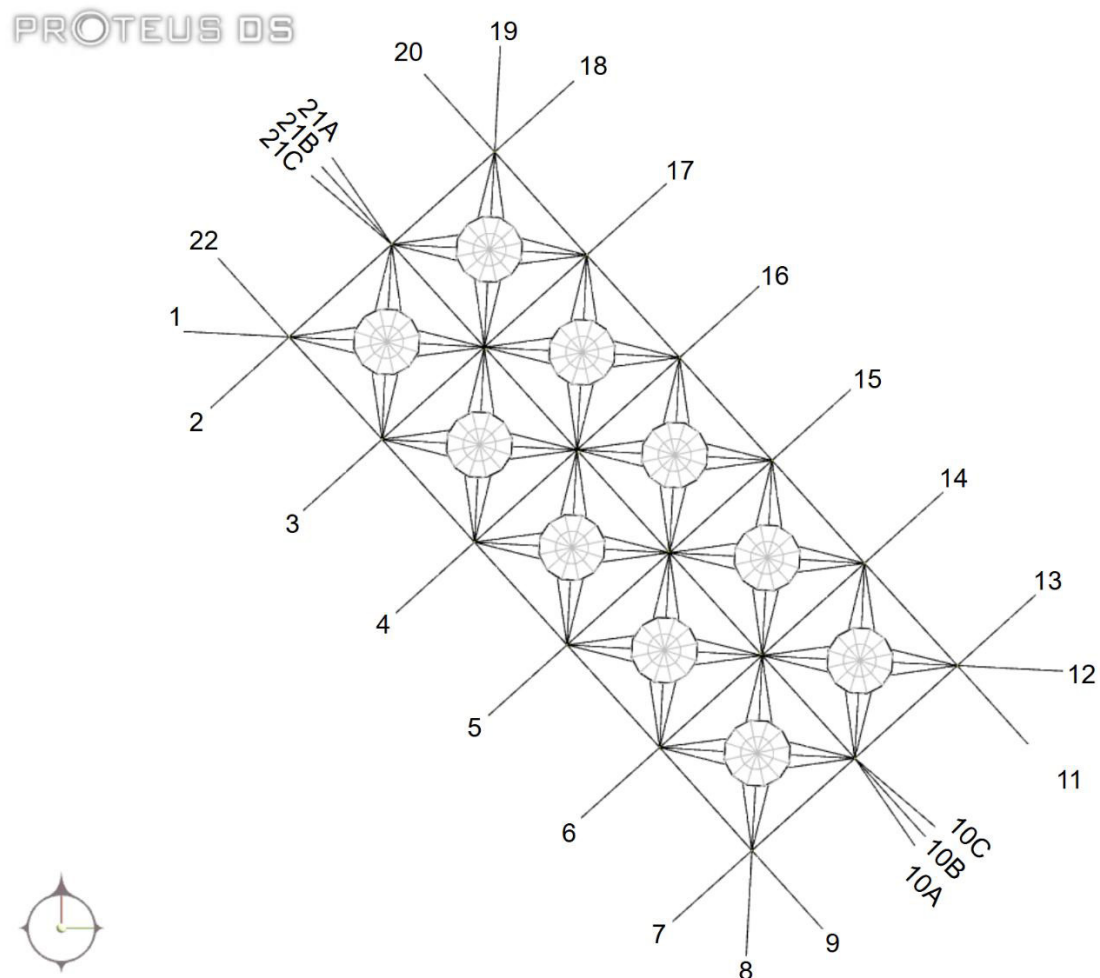


Figure 14 - Net Pen and Mooring Set Out.

Image: DSA Ocean
Not to Scale

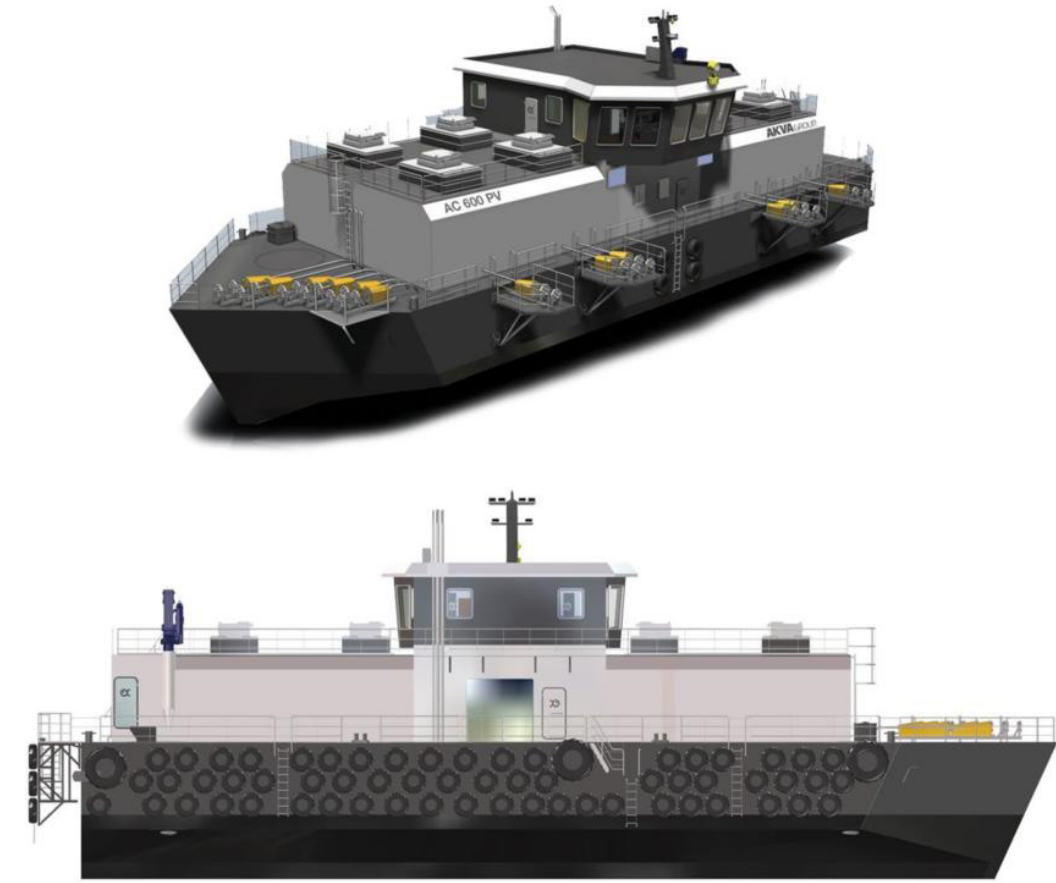


Figure 15 - Feed Barge.

Image: DSA Ocean / AKVA website
Not to Scale

Figure 16 - Mooring Layout for Feed Barge.

Image: DSA Ocean
Not to Scale

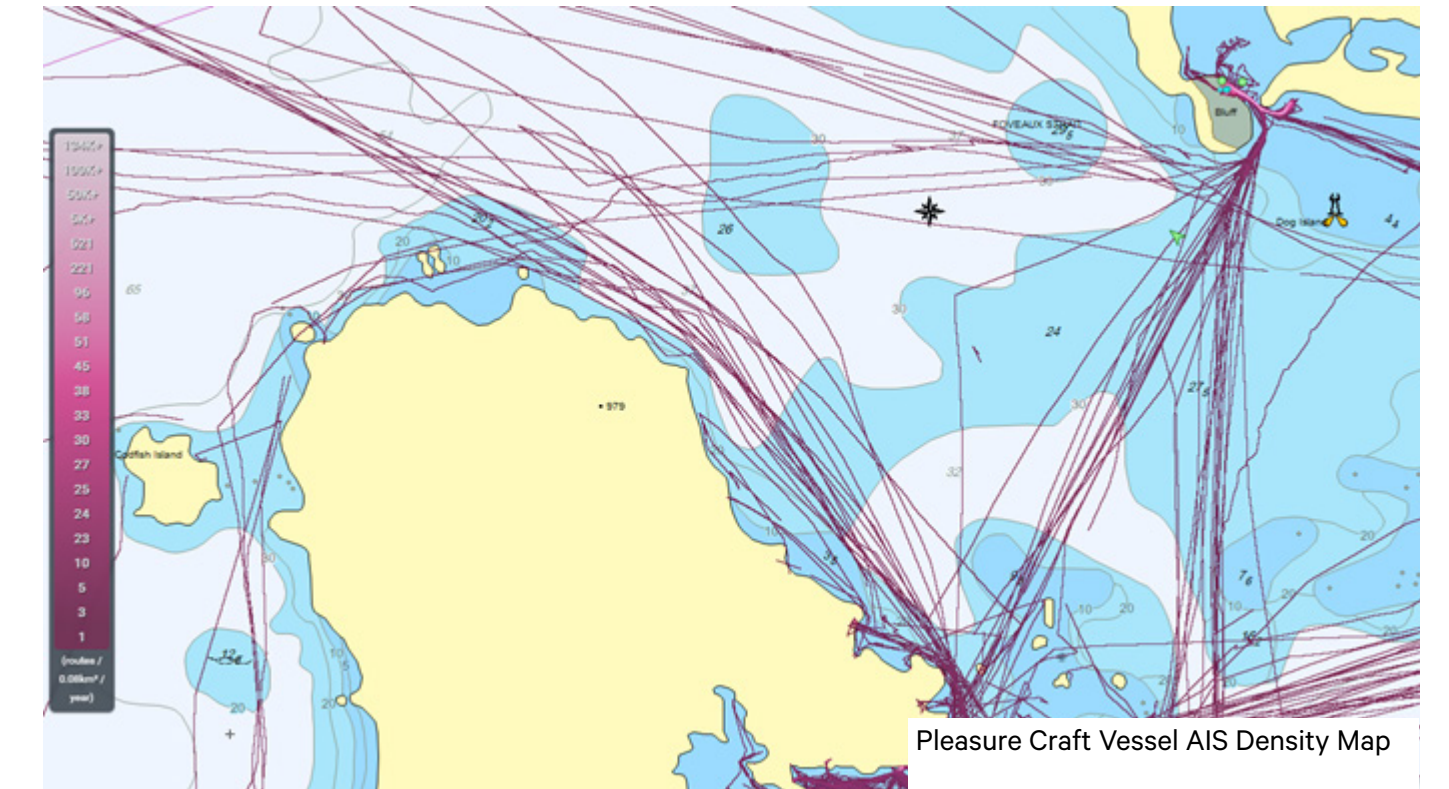
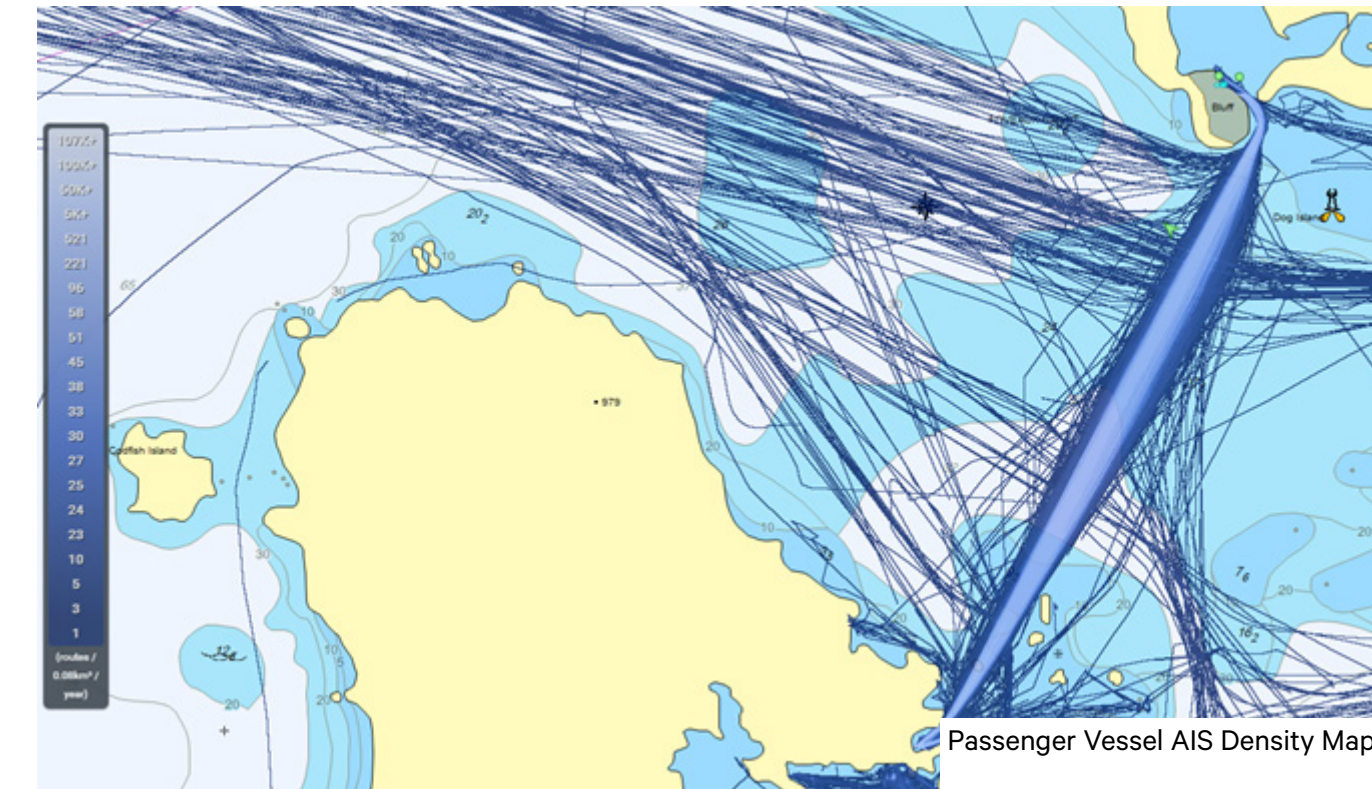
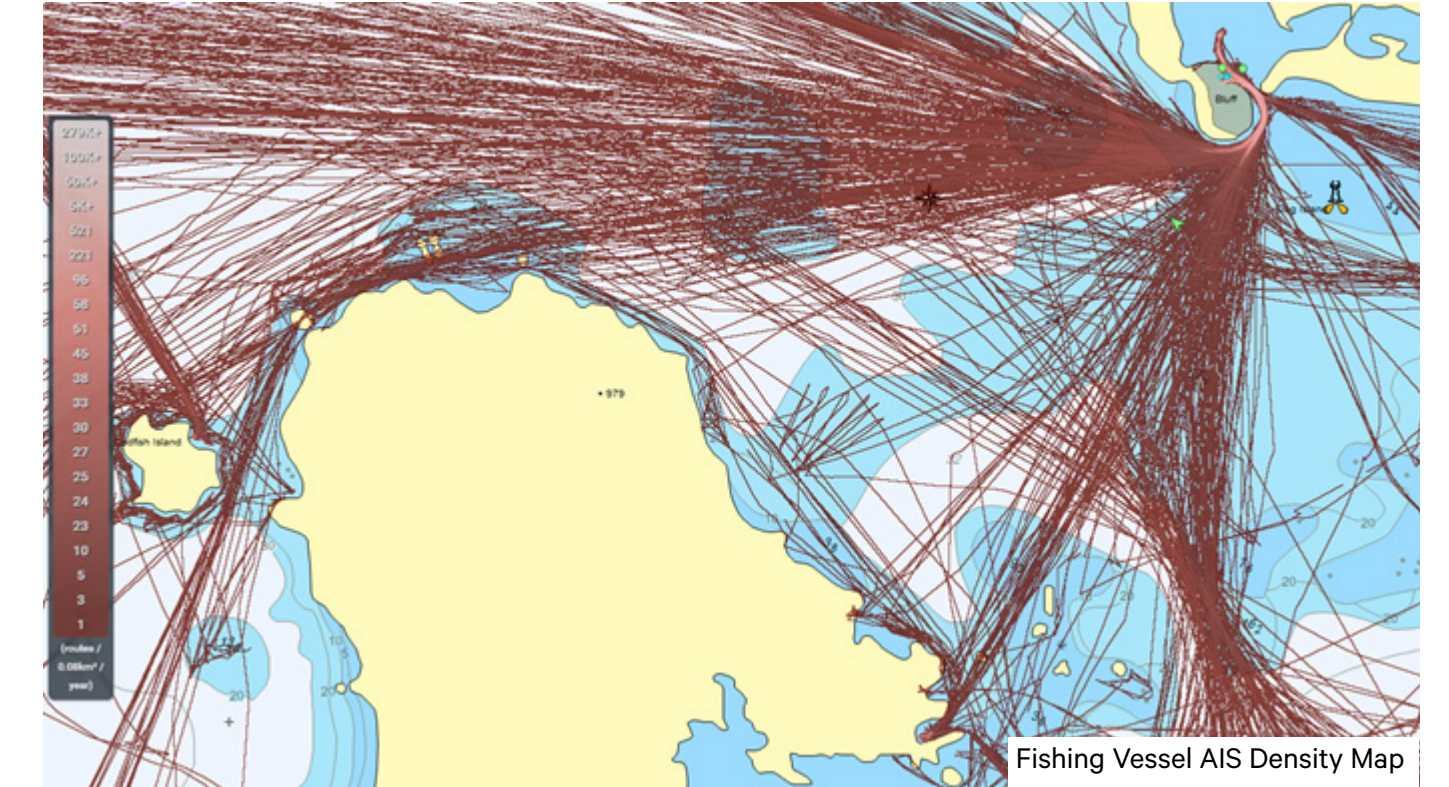
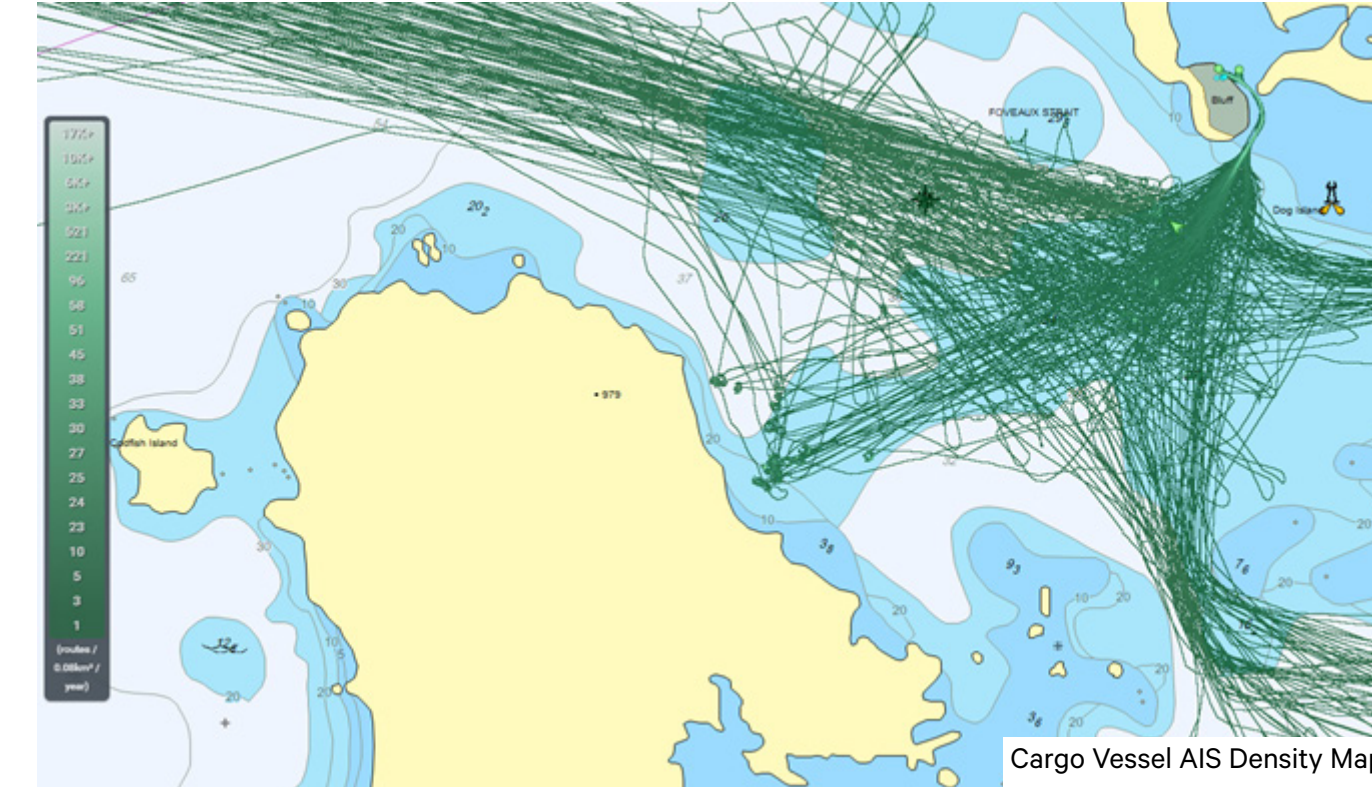


Figure 17 - Navigation Maps.

Image: Navigatus Consulting.
Not to Scale

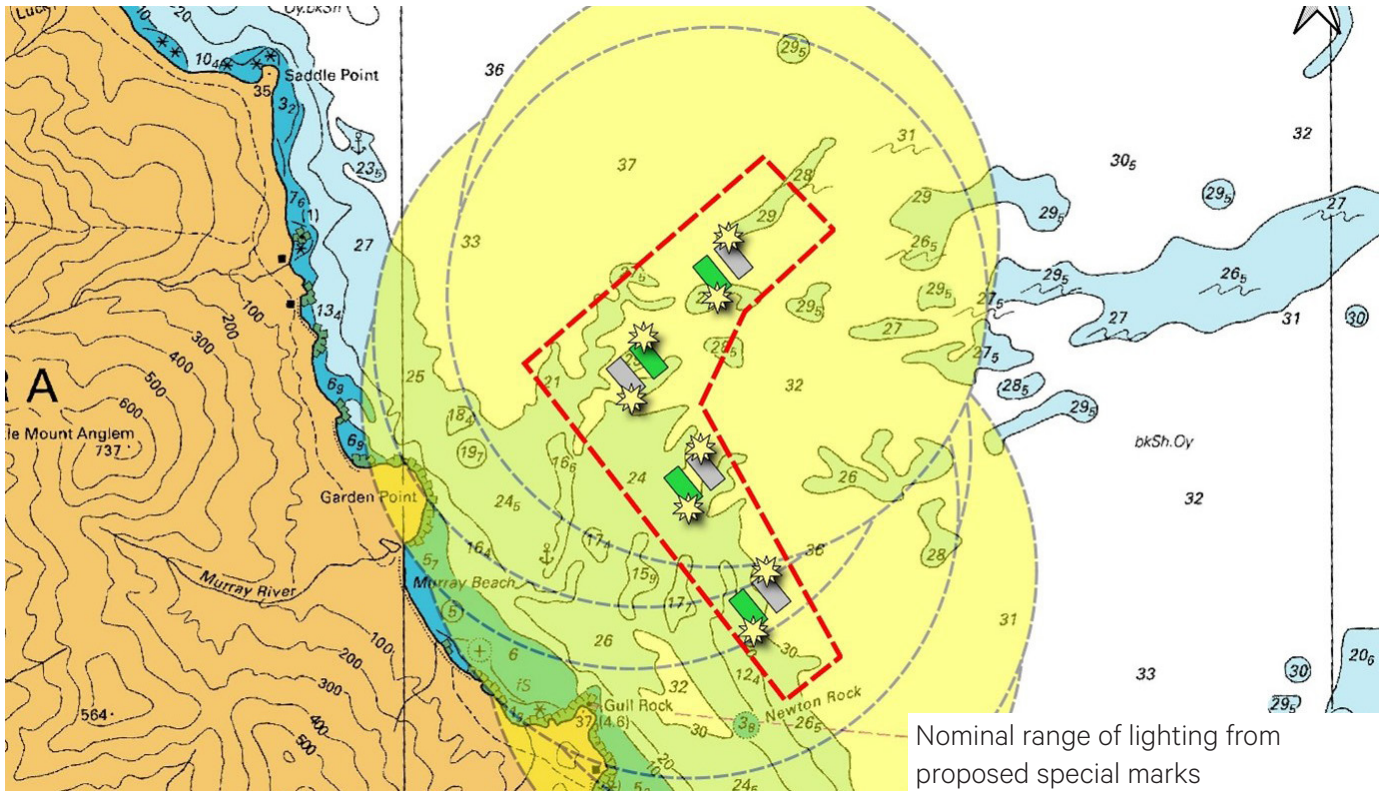
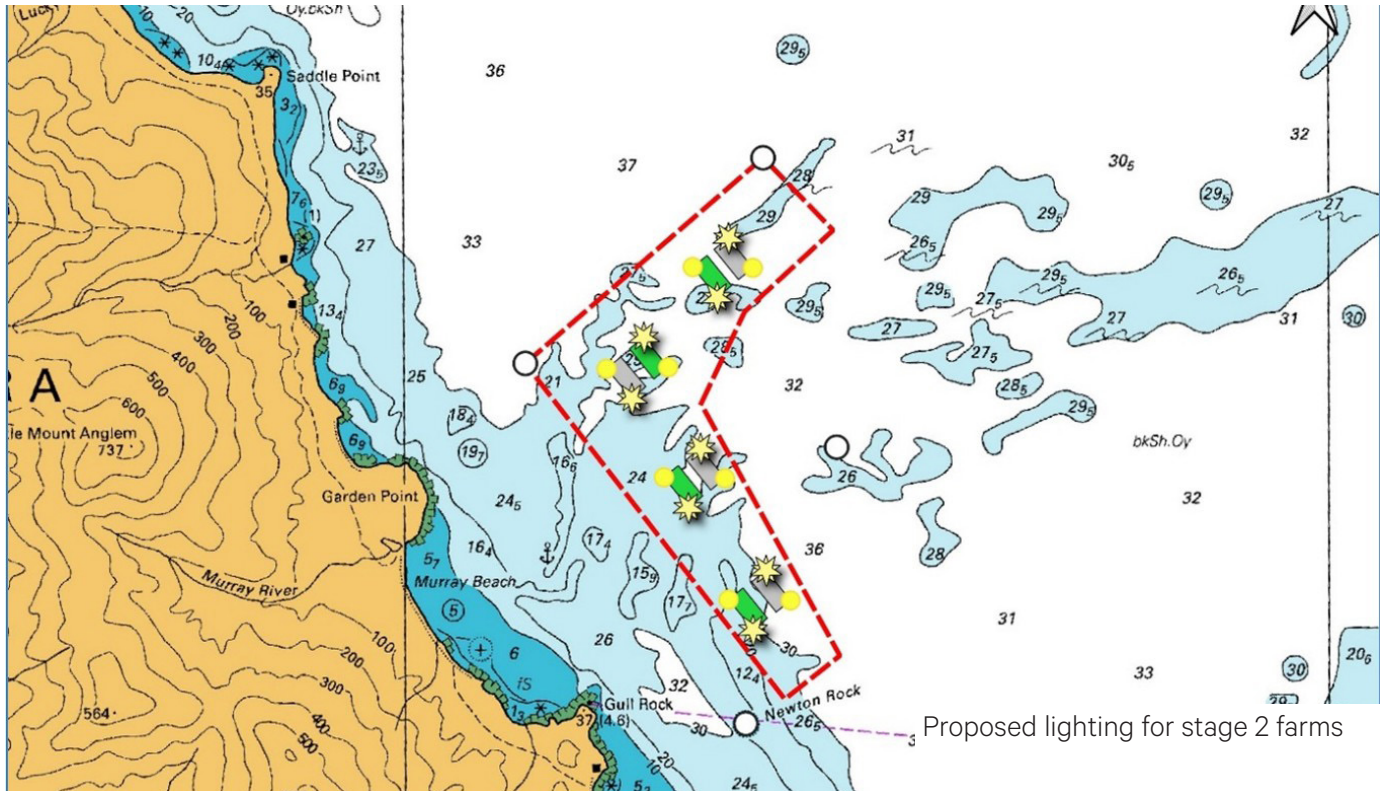
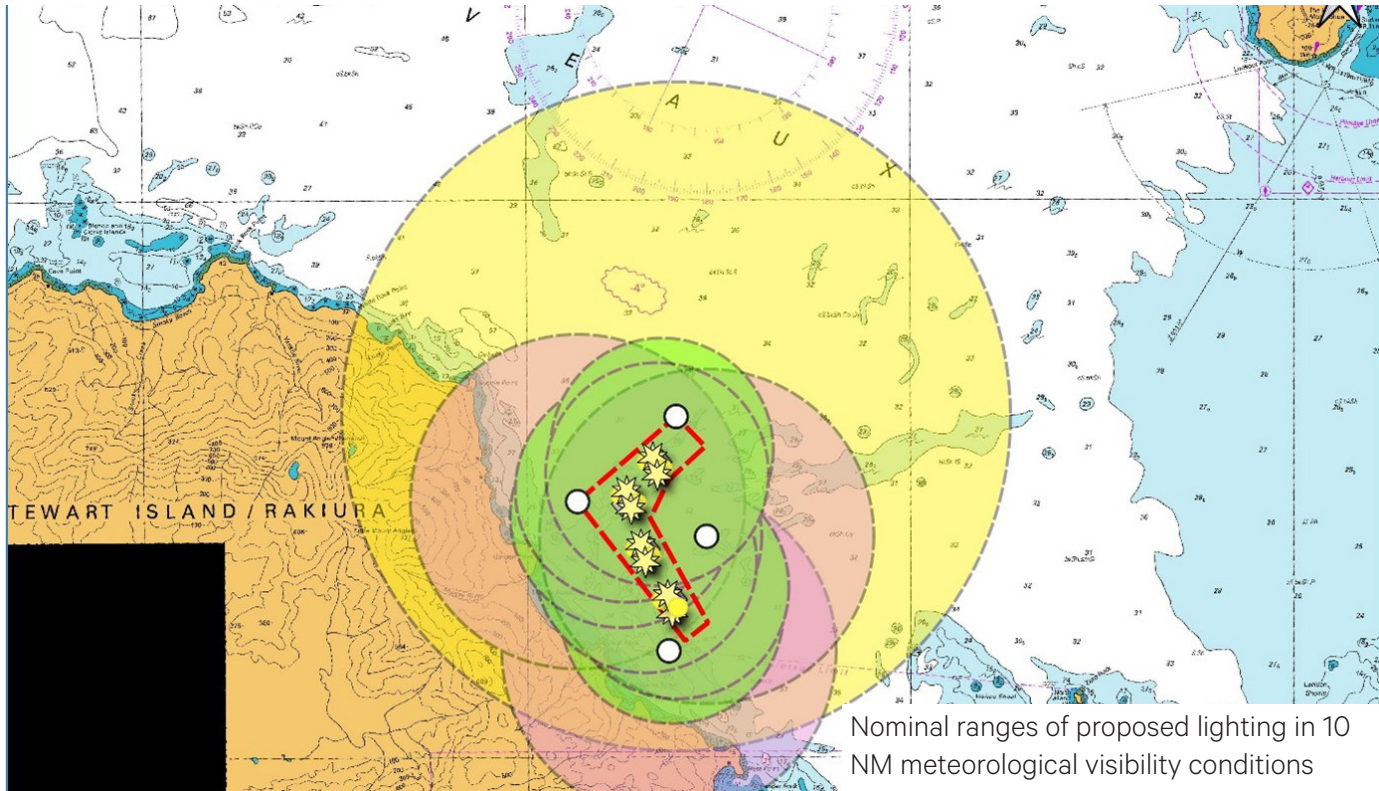


Figure 18 - Lighting Maps.

Image: Navigatus Consulting.
Not to Scale

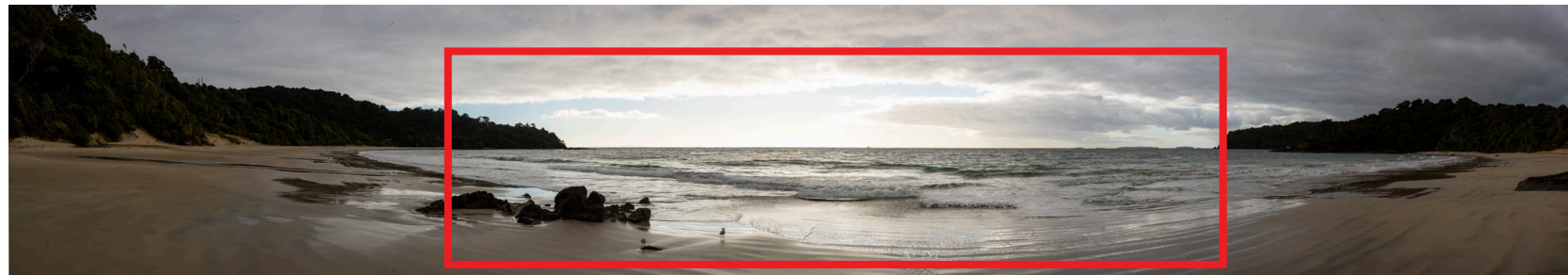


Figure 19 - Viewpoint Location Map.



Figure 20 - Viewpoint 1 - EXISTING.

View from Big Bungaree Beach, looking north.
Approximately 3.30km to closest farm site.



Isthmus.

Graphic Attachments - Hananui Aquaculture Project - November 2025.



Original Photo | Stitched image | DSLR Nikon D810 50mm lens | AE | 0841hrs 15 April 2025 | 1221182E 4803662N (NZTM)

Field of view | Approximately 110° horizontal and 34° vertical field of view

Scale | Print images across 2 x A3 pages for correct scale at 400m reading distance | Use scale bar to adjust sizing on screen for correct scale at 400m reading distance

5cm

Graphic Attachments - Hananui Aquaculture Project - November 2025.

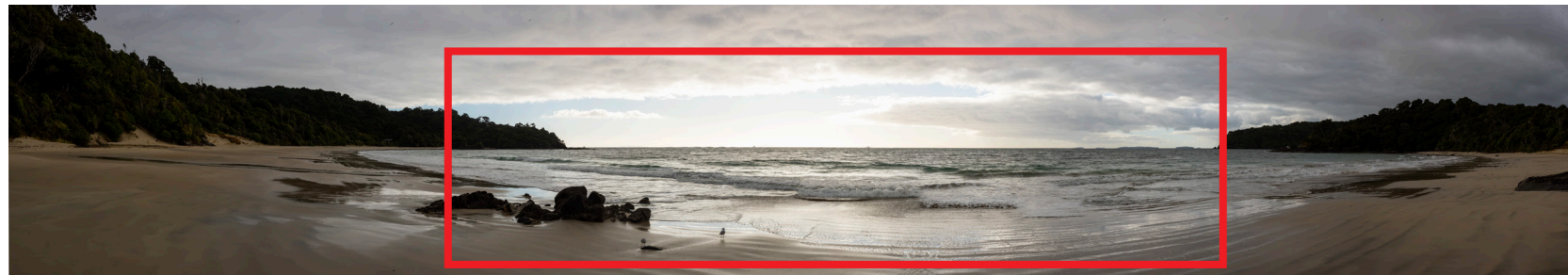
Isthmus.

21



Figure 21 - Viewpoint 1 - PROPOSED.

View from Big Bungaree Beach, looking north.
Approximately 3.30km to closest farm site.



Original Photo | Stitched image | DSLR Nikon D810 50mm lens | AE | 0841hrs 15 April 2025 | 1221182E 4803662N (NZTM)

Field of view | Approximately 110° horizontal and 34° vertical field of view

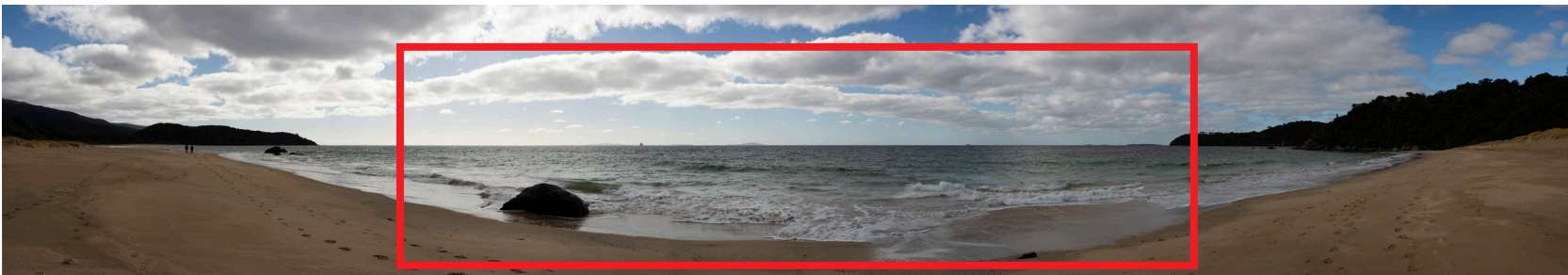
Scale | Print images across 2 x A3 pages for correct scale at 400m reading distance | Use scale bar to adjust sizing on screen for correct scale at 400m reading distance

5cm



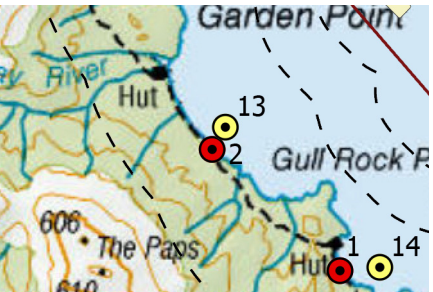
Figure 22 - Viewpoint 2 - EXISTING.

View from Murray Beach, looking northeast.
Approximately 3.80km to closest farm site.



Isthmus.

Graphic Attachments - Hananui Aquaculture Project - November 2025.



Original Photo | Stitched image | DSLR Nikon D810 50mm lens | AE | 1103hrs 15 April 2025 | 1219075E 4805668N (NZTM)

Field of view | Approximately 110° horizontal and 34° vertical field of view

Scale | Print images across 2 x A3 pages for correct scale at 400m reading distance | Use scale bar to adjust sizing on screen for correct scale at 400m reading distance

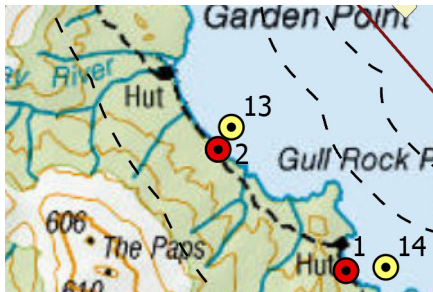
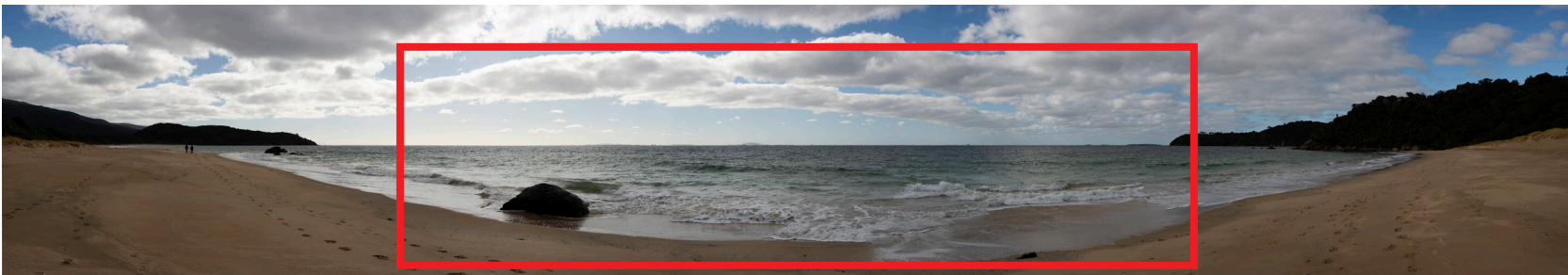
5cm

Isthmus.



Figure 23 - Viewpoint 2 - PROPOSED.

View from Murray Beach, looking northeast.
Approximately 3.80km to closest farm site.



Original Photo | Stitched image | DSLR Nikon D810 50mm lens | AE | 1103hrs 15 April 2025 | 1219075E 4805668N (NZTM)

Field of view | Approximately 110° horizontal and 34° vertical field of view

Scale | Print images across 2 x A3 pages for correct scale at 400m reading distance | Use scale bar to adjust sizing on screen for correct scale at 400m reading distance

