

NOTE: CONCEPT LAYOUT ONLY. SERVICE DETAILS TO BE CONFIRMED AT DETAILED DESIGN STAGE

- 1. ALL WORKS TO BE IN ACCORDANCE WITH WESTERN BAY OF PLENTY DEVELOPMENT CODE
- 2. IT IS THE CONTRACTOR'S RESPONSIBILITY TO LOCATE ALL SERVICES THAT MAY BE AFFECTED BY HIS OPERATIONS.
- 3. THE CONTRACTOR SHALL COMPLY WITH ALL RELEVANT OSH AND HEALTH AND SAFETY REQUIREMENTS.
- 4. THE CONTRACTOR SHALL OBTAIN ALL NECESSARY PERMITS FROM ALL RELEVANT AGENCIES BEFORE COMMENCING WORK UNDER OR NEAR THEIR SERVICES.
- 5. FINAL PAVEMENT DESIGN SUBJECT TO CBR/BEAM TESTS ON SUBGRADE MATERIAL.
- 6. ALL SIGNAGE AND PAVEMENT MARKINGS TO BE IN ACCORDANCE WITH NZTA MOTSMAM STANDARDS.
- 7. ALL LINE MARKINGS TO BE REFLECTORISED IN ACCORDANCE WITH MOTSMAM STANDARDS.
- 8. THE MINIMUM VERTICAL AND LATERAL CLEARANCES SHALL BE AS SPECIFIED IN ACCORDANCE WITH MOTSMAM STANDARDS.

LEGEND

| | |
|-----|----------------------|
| --- | EX 3DY |
| --- | PRB DY |
| --- | EX 3D MARKING (GREY) |
| --- | EX ROAD PAVEMENT |
| --- | PR ROAD PAVEMENT |
| --- | PR FOOTPATH / ISLAND |
| --- | PR BERM |

| | | | |
|-----|----------------|-----|-------|
| Rev | Description | By | Date |
| B | FOR CONSENT | AJS | 04/26 |
| A | FOR DISCUSSION | AJS | 02/26 |

| | | |
|---------|--------|---------|
| Survey | M/AVEN | 05/2025 |
| Design | AJS | 04/26 |
| Drawn | AJS | 04/26 |
| Checked | MK | 04/26 |



Maven Bay of Plenty
 118 Cambridge Street, Tauranga
 www.maven.co.nz
 New Zealand

Project: **WAIRAKEI SOUTH FTA090 DEVELOPMENT**
BELL ROAD, PAPAMOA FOR BELL ROAD LIMITED PARTNERSHIP

Title: **PROPOSED ROADING INTERSECTION 1 (PEI) PLAN**

| | |
|-------------|--------------------------|
| Project no. | BOP0749 |
| Scale | 1:500 @ A3 |
| Cad file | BOP0749-C350-1 AND 2.DWG |
| Drawing no. | C350-1-5 |
| Rev | B |

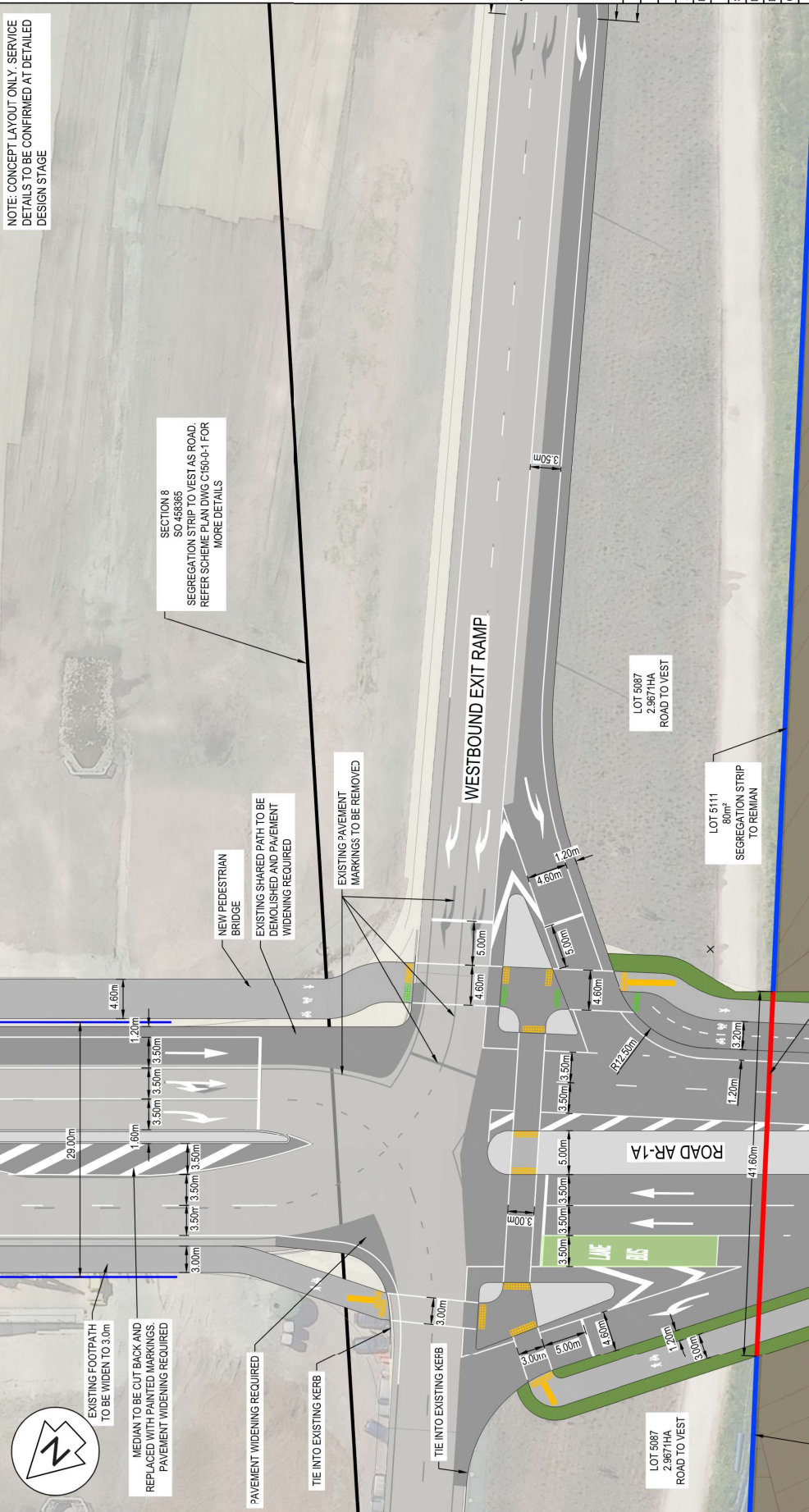


FOR CONSENT



NOTE: CONCEPT LAYOUT ONLY. SERVICE DETAILS TO BE CONFIRMED AT DETAILED DESIGN STAGE

- NOTES
1. ALL WORKS TO BE IN ACCORDANCE WITH WESTERN BAY OF PLENTY DEVELOPMENT CODE
 2. IT IS THE CONTRACTORS RESPONSIBILITY TO LOCATE ALL SERVICES THAT MAY BE AFFECTED BY HIS OPERATIONS.
 3. THE CONTRACTOR SHALL COMPLY WITH ALL RELEVANT OSH AND HEALTH AND SAFETY REQUIREMENTS.
 4. THE CONTRACTOR SHALL OBTAIN ALL NECESSARY PERMITS FROM THE RELEVANT AGENCIES BEFORE COMMENCING WORK UNLESS OR NEAR THEIR SERVICES.
 5. FINAL PAVEMENT DESIGN SUBJECT TO CBR BEAM TESTS ON SUBGRADE MATERIAL.
 6. ALL SIGNAGE AND PAVEMENT MARKINGS TO BE IN ACCORDANCE WITH NZTA MOTSMAM STANDARDS.
 7. ALL LINE MARKINGS TO BE REFLECTORISED IN ACCORDANCE WITH MOTSMAM STANDARDS.
 8. THE MINIMUM VERTICAL AND LATERAL CLEARANCES FOR OVERHEAD POWER LINES SHALL BE IN ACCORDANCE WITH MOTSMAM STANDARDS.



SECTION 8
SO 469365
SEGREGATION STRIP TO VEST AS ROAD.
REFER SCHEME PLAN DWG C150-0-1 FOR MORE DETAILS

NEW PEDESTRIAN BRIDGE
EXISTING SHARED PATH TO BE DEMOLISHED AND PAVEMENT WIDENING REQUIRED

EXISTING PAVEMENT MARKINGS TO BE REMOVED

WESTBOUND EXIT RAMP

ROAD AR-1A

LOT 5087
2,9671HA
ROAD TO VEST

LOT 5111
80m²
SEGREGATION STRIP TO REMAIN

SEGREGATION STRIP TO BE REMOVED
REFER DIAGRAM A AND SCHEME PLAN DWG C150-0-1 FOR MORE DETAILS

LOT 5087
2,9671HA
ROAD TO VEST

LOT 5110
46m²
SEGREGATION STRIP TO REMAIN

FOR CONSENT

LEGEND

| | |
|----------------------|----------------------|
| EX-SUBD | EX-3D MARKING (GREY) |
| PR-ROAD PAVEMENT | PR-ROAD PAVEMENT |
| PR-FOOTPATH / ISLAND | PR-FOOTPATH / ISLAND |
| PR-BERM | PR-BERM |

| Rev | Description | By | Date |
|-----|----------------|-----|-------|
| B | FOR CONSENT | AJS | 04/26 |
| A | FOR DISCUSSION | AJS | 02/26 |

| Survey | Design | Drawn | Checked |
|---------|--------|-------|---------|
| MAVEN | AJS | AJS | JKK |
| 05/2025 | 04/26 | 04/26 | 04/26 |

M A E N
Maven Bay of Plenty
118 Cambridge Street, Tauranga
New Zealand

Project: **WAIRAKEI SOUTH FTA090 DEVELOPMENT**
BELL ROAD, PAPAMOA
FOR BELL ROAD LIMITED PARTNERSHIP

Title: **PROPOSED ROADING INTERSECTION 2 (PEI) PLAN**

| | |
|-------------|--------------------------|
| Project no. | BOP0749 |
| Scale | 1:500 @ A3 |
| Cad file | BOP0749-C350-1-IND.2.DWG |
| Drawing no. | C350-2-1 |
| Rev | B |

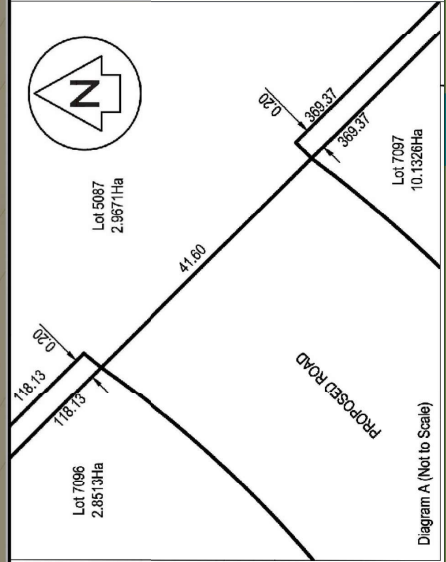


Diagram A (Not to Scale)
DIAGRAM A (NTS)
SOURCE: SCHEME PLAN DWG C150-0-1

NOTES

1. ALL WORKS TO BE IN ACCORDANCE WITH THE DISTRICT COUNCIL STANDARDS.
2. THE INTERSECTION MARKUPS WERE PROVIDED AS PART OF THE PROVISIONAL INTERSECTION MODEL ARRANGEMENTS SKETCHES.

| | | | |
|-----|------------------|----|-------|
| Rev | Description | By | Date |
| B | FOR CONSENT | MM | 03/26 |
| A | DRAFT FOR REVIEW | MM | 02/26 |

| | | |
|---------|----|---------|
| Survey | MM | 05/2025 |
| Design | MM | 02/26 |
| Drawn | MM | 02/26 |
| Checked | MM | 03/26 |

M M A V E N
 Māven Bay of Plenty
 116 Cameron Street, Tauranga
 New Zealand

Project
WAIRAKEI SOUTH FTA090
DEVELOPMENT
BELL ROAD, PAPAMOA
FOR BELL ROAD
LIMITED PARTNERSHIP

Title
PROPOSED ROADING
SITE INTERSECTIONS
OVERVIEW PLAN

| | |
|-------------|--------------------|
| Project no. | BOP0749 |
| Scale | 1:10000 @ A3 |
| Cad file | BOP0749-C350-3-3WG |
| Drawing no. | C350-3-1 |
| Rev | B |



FOR CONSENT

NOTES

1. ALL WORKS TO BE IN ACCORDANCE WITH THE DISTRICT COUNCIL STANDARDS.
2. THE INTERSECTION MARKUPS WERE PROVIDED AS PART OF THE PROVISIONAL INTERSECTION MODEL ARRANGEMENTS SCHEDULES.

LEGEND

| | |
|--|------------------------|
| — | PROP ARTERIAL ROADS |
| — | PROP COLLECTOR ROADS |
| — | PROP RESIDENTIAL ROADS |
| — | PROP INDUSTRIAL ROADS |

| | | | |
|-----|-----------------|----|-------|
| Rev | Description | By | Date |
| B | FOR CONSENT | KM | 03/26 |
| A | DRAF FOR REVIEW | KM | 02/26 |

| | | | |
|---------|-------|------|---------|
| Survey | HAVEN | Date | 05/2025 |
| Design | KM | Date | 02/26 |
| Drawn | KM | Date | 02/26 |
| Checked | JK | Date | 03/26 |

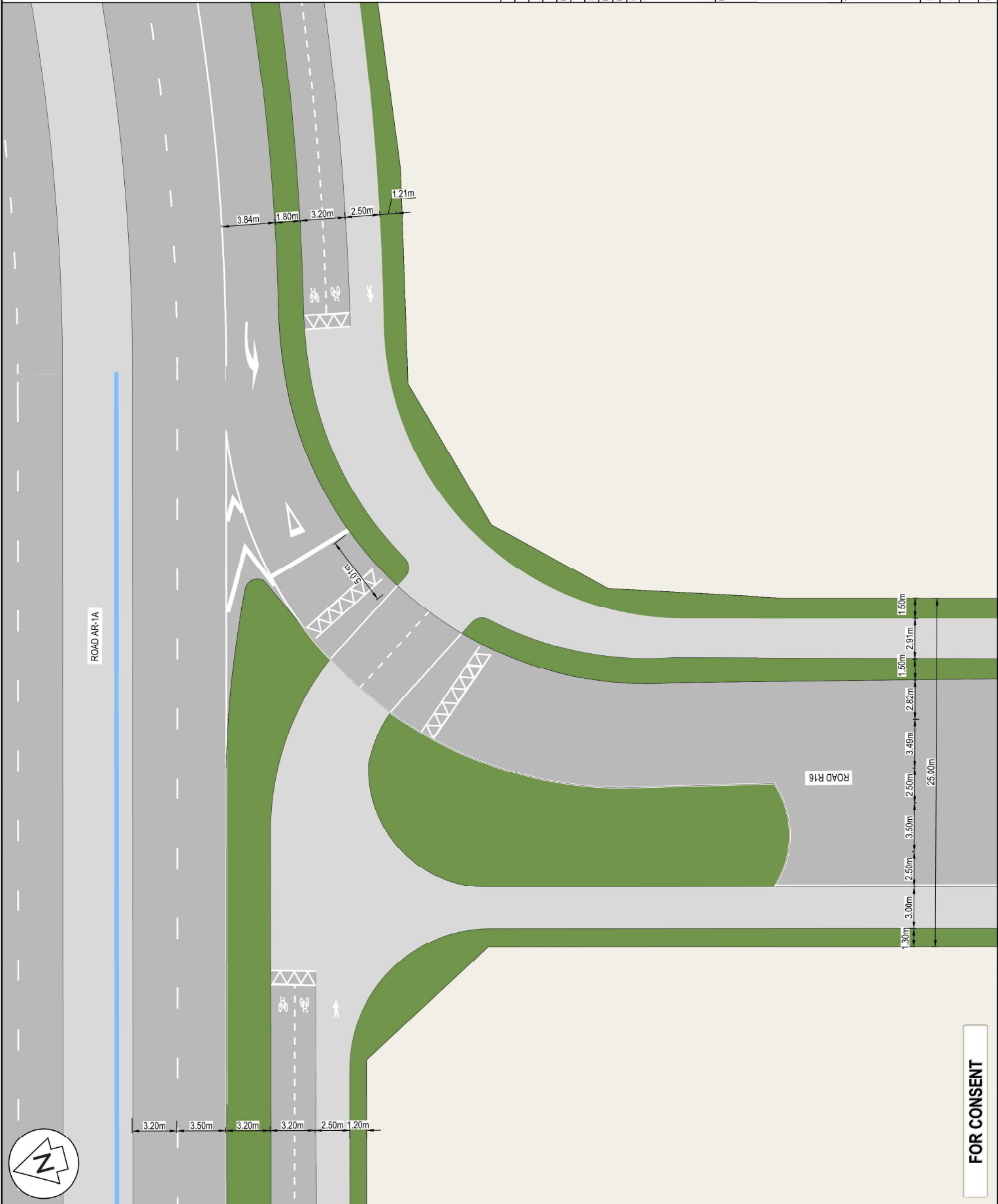


Maven Bay of Plenty
 116 Cameron Street, Tauranga
 www.maven.co.nz

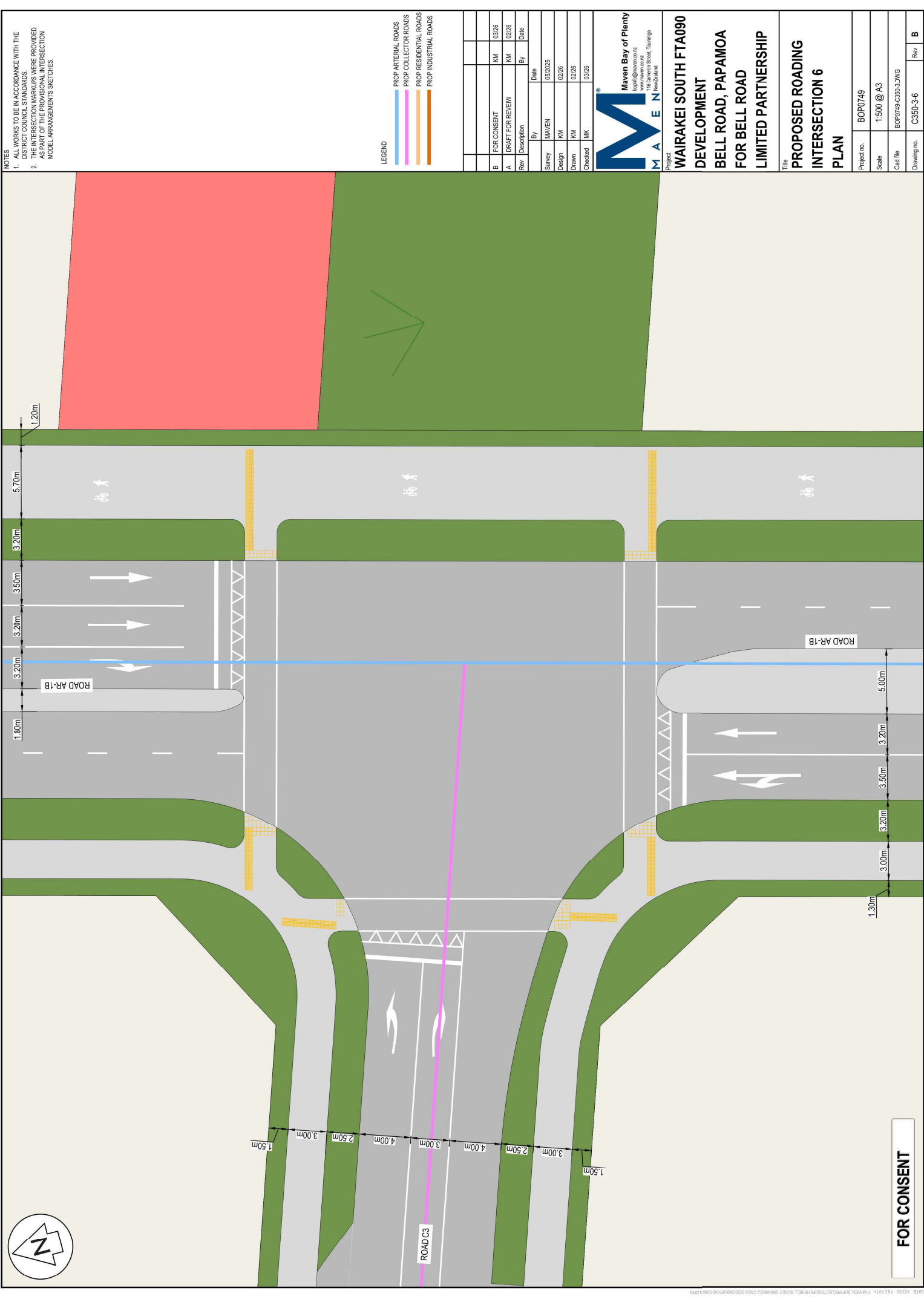
Project:
WAIRAKEI SOUTH FTA090 DEVELOPMENT
BELL ROAD, PAPAMOA
FOR BELL ROAD LIMITED PARTNERSHIP

Title:
PROPOSED ROADING LEFT TURN OFF AR-1A INTERSECTION PLAN

| | |
|-------------|-------------------|
| Project no. | BOP0749 |
| Scale | 1:500 @ A3 |
| Cad file | BOP0749-C350-3.WG |
| Drawing no. | C350-3-2 |
| Rev | B |



FOR CONSENT



NOTES
 1. ALL WORKS TO BE IN ACCORDANCE WITH THE DISTRICT COUNCIL STANDARDS.
 2. THE INTERSECTION MARKUPS WERE PROVIDED AS PART OF THE PROVISIONAL INTERSECTION MODEL ARRANGEMENTS SHEETS.

LEGEND

| | |
|---------------------------------------|------------------------|
| — | PROP ARTERIAL ROADS |
| — | PROP COLLECTOR ROADS |
| — | PROP RESIDENTIAL ROADS |
| — | PROP INDUSTRIAL ROADS |

| | | | |
|---------|------------------|----|---------|
| Rev | Description | By | Date |
| B | FOR CONSENT | KM | 03/26 |
| A | DRAFT FOR REVIEW | KM | 02/26 |
| Survey | | | |
| | MAVEN | | 05/2025 |
| Design | | | |
| | KM | | 02/26 |
| Drawn | | | |
| | KM | | 02/26 |
| Checked | | | |
| | JKK | | 03/26 |

M A V E N
 Moven Bay of Plenty
 116 Cameron Street, Tauranga
 New Zealand
 www.moven.co.nz
 info@moven.co.nz

Project
 WAIRAKEI SOUTH FTA090
 DEVELOPMENT
 BELL ROAD, PAPAMOA
 FOR BELL ROAD
 LIMITED PARTNERSHIP

Title
 PROPOSED ROADING
 INTERSECTION 6
 PLAN

| | |
|-------------|--------------------|
| Project no. | BOP0749 |
| Scale | 1:500 @ A3 |
| Cad file | BOP0749-C350-3-2WG |
| Drawing no. | C350-3-6 |
| Rev | B |

FOR CONSENT

