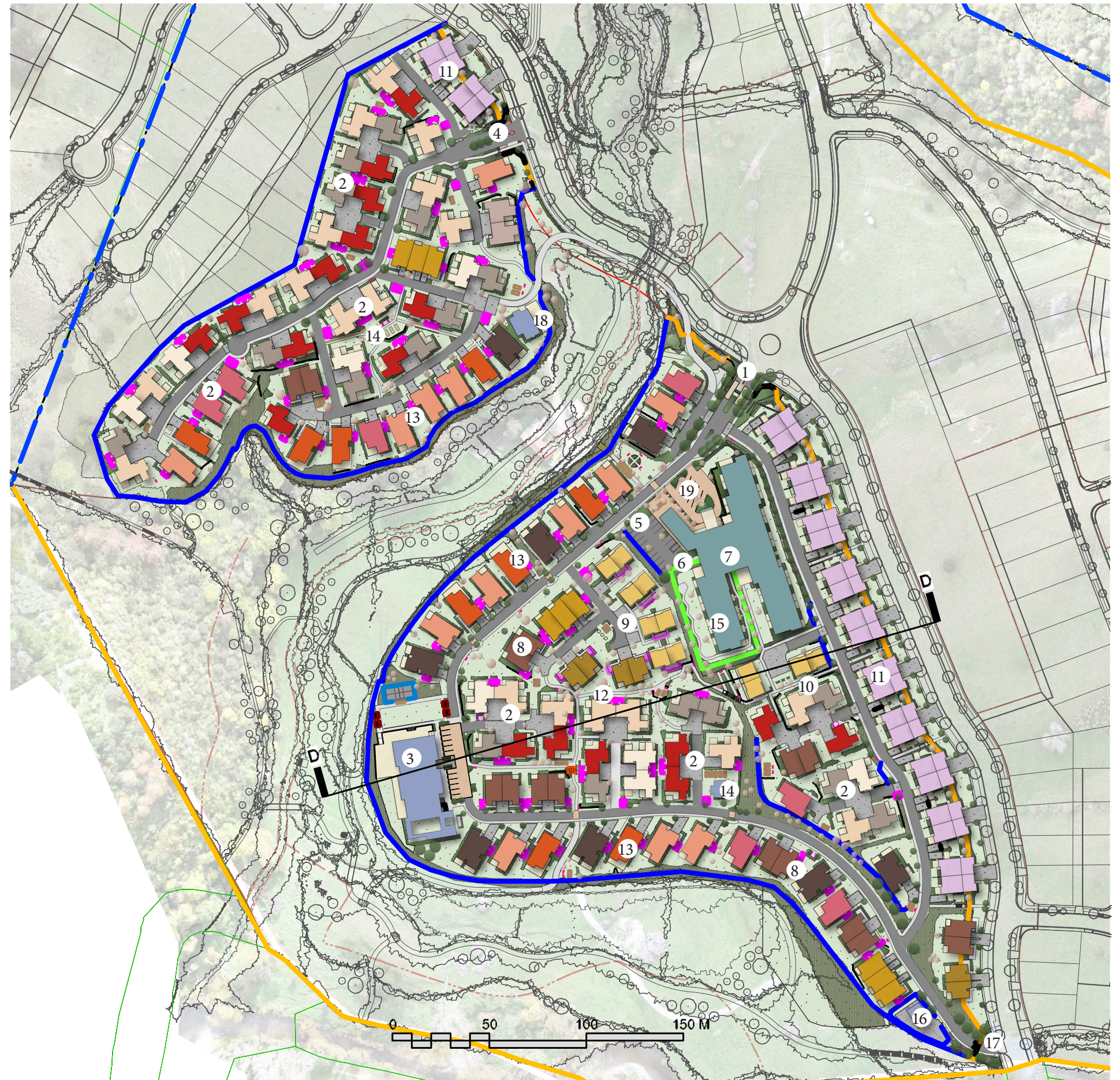


3

DESIGN PROPOSAL - LANDSCAPE STRATEGY

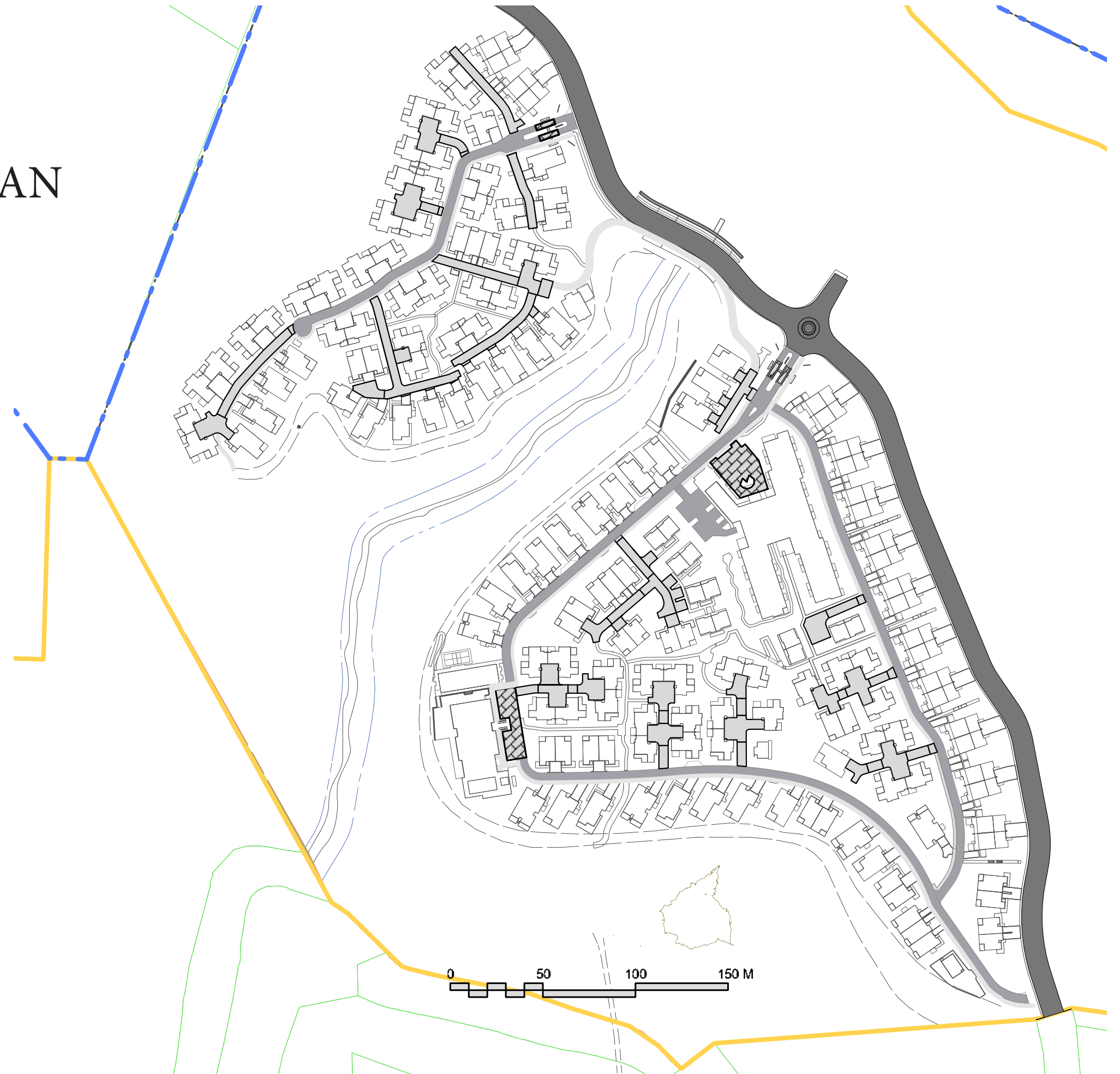
LANDSCAPE MASTERPLAN

- ① Main Village entrance with signage
- ② Mixed units area
- ③ Clubhouse
- ④ Area B Village entrance
- ⑤ Cafe carpark
- ⑥ Service bay and carpark
- ⑦ Care building
- ⑧ Duplex
- ⑨ Townhouses
- ⑩ Townhouses & mixed units
- ⑪ Terraces
- ⑫ Green pathway
- ⑬ Premium location
- ⑭ Communal area
- ⑮ Dementia Garden
- ⑯ Sheds & service yard
- ⑰ South/ Service Gate
- ⑱ Pavilion
- ⑲ Care Carpark



STREET TYPOLOGY PLAN

- 11m wide suburban street
- 6.5m wide main village road including 1.5m shared pedestrian path
- 4.5m wide shared space cluster road
- 2.2m wide shared pedestrian/buggy link
- Parking areas



GREEN SPACE NETWORKS

There are several aspects to the external space networks for the site as follows: large scale green spaces; outdoor activity spaces; green space and pathways connected to the Kaka stream. These have combined as much as possible to allow an integrated green space development. Addition to the gardens and general landscaping associated with the residential villas and Care Facility, there are a number of green spaces are located around the village for recreation, social, wayfinding and general amenity.

- Green/ outdoor activity spaces
- Green pathways to Kaka Stream
- Structural native planting
- Kaka Stream corridor
- Future reserve





PEDESTRIAN CONNECTIVITY PLAN




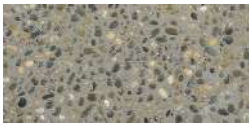






The pedestrian site circulation throughout the site is arranged into two types. The first are main paths (for connection) are at 2.2 metres wide and the second (for discovery) are 1.5 metres wide and work in conjunction with the shared space described above provide complete pedestrian permeability throughout the site. A link bridge from Area A to B will be designed to provide pedestrian access.

A series of smaller vehicle loop and cul-de-sac roads also form shared space pedestrian accesses, in conjunction with smaller scale pedestrian paths.

- 2.2m wide pedestrian and buggy shared path linkage between village precincts.
- 1.5m wide pedestrian connections to wider valley paths.
- Shared pedestrian paths adjacent roads.
- Pedestrian only paths
- Pedestrian paths external to the site



HARDSCAPE AREA A

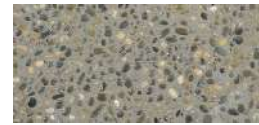
- 
- Asphalt to:
- Roadways
- 
- Allied Concrete Aggregate 13mm 'Autumn Gold' to:
- Driveways
- Adjacent roadside parking
- 
- Allied Concrete Aggregate 7mm 'Riverstone' to:
- Footpaths
- Utility spaces
- 
- Concrete Aggregate with dark oxide and banding to:
- Village entrance
- Area B entrance
- 
- Composite Decking to:
- Villa terraces
- Villa utility areas
- Clubhouse terrace



HARDSCAPE AREA B



Asphalt to:
- Roadways



Allied Concrete Aggregate 13mm 'Autumn Gold' to:
- Driveways
- Adjacent roadside parking



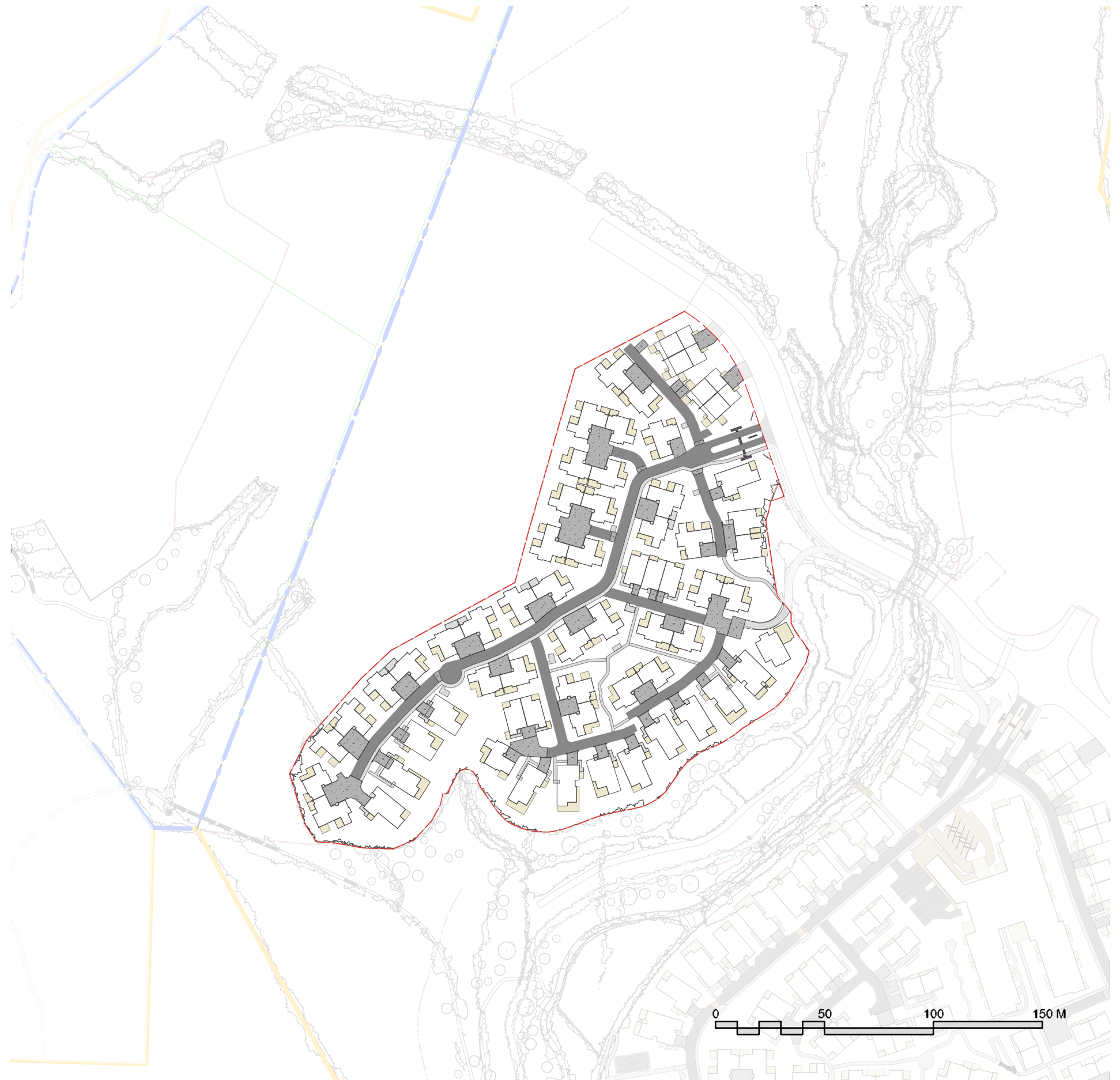
Allied Concrete Aggregate 7mm 'Riverstone' to:
- Footpaths
- Utility spaces



Concrete Aggregate with dark oxide and banding to:
- Village entrance
- Area B entrance



Composite Decking to:
- Villa terraces
- Villa utility areas
- Clubhouse terrace



RETAINING WALLS AREA A



Timber retaining walls.



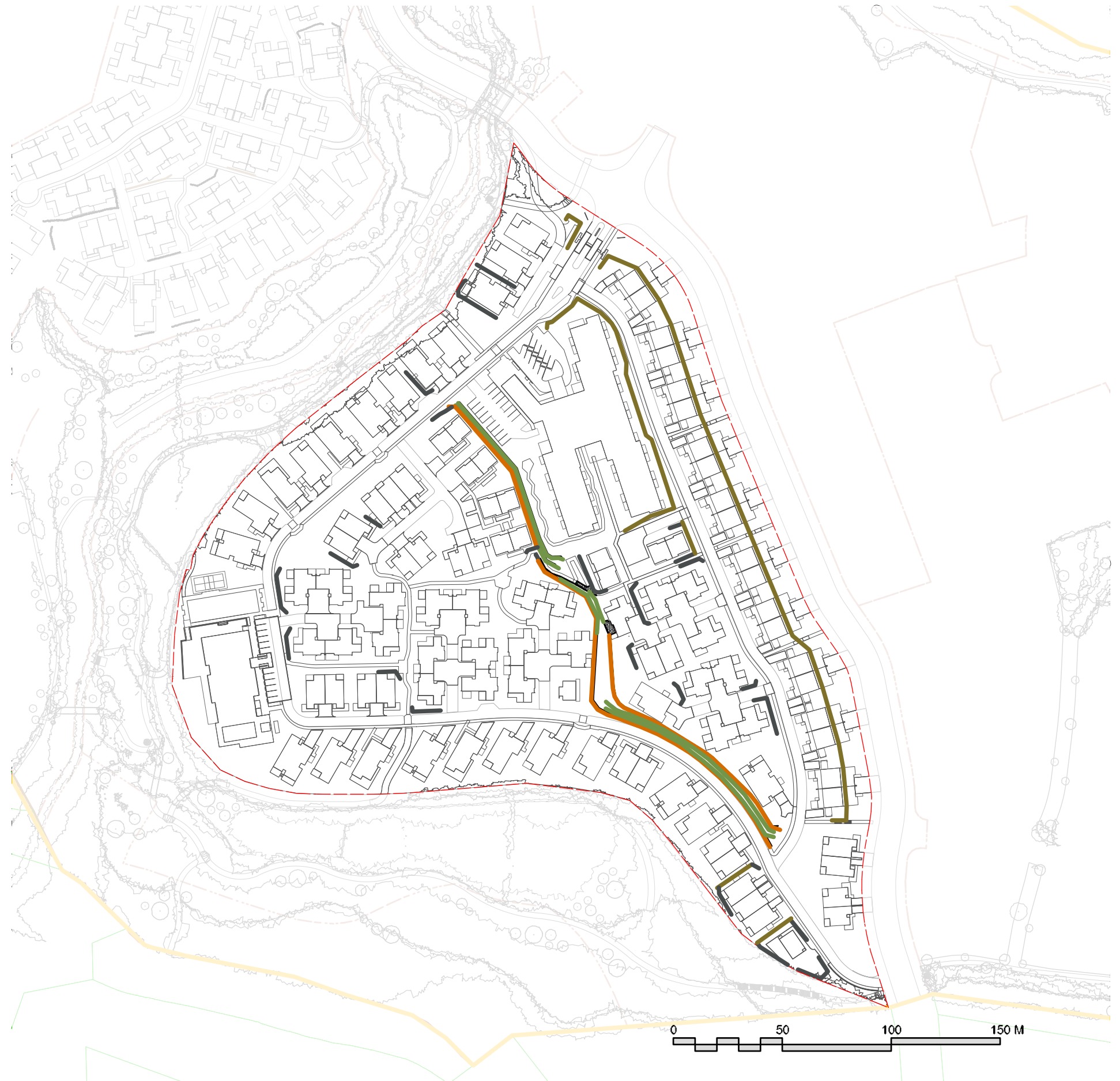
Landscape retaining walls.



Vegetated retaining wall bags.



Gabion retaining walls.



RETAINING WALLS AREA B



Timber retaining walls.



Landscape retaining walls.



Vegetated retaining wall bags.



Gabion retaining walls.

