

NOTES

- WORKS TO BE IN ACCORDANCE WITH WESTERN BAY OF PLENTY DEVELOPMENT CODE.
- CO-ORDINATES IN TERMS OF BAY OF PLENTY 2010.
- REDUCED LEVELS ARE IN TERMS OF NZVD 2016.
- AREAS, BOUNDARIES AND MEASUREMENTS ARE APPROXIMATE ONLY AND SUBJECT TO FINAL SURVEY.
- IT IS THE CONTRACTORS RESPONSIBILITY TO LOCATE ALL SERVICES THAT MAY BE AFFECTED BY HIS OPERATIONS.
- THE CONTRACTOR SHALL COMPLY WITH ALL RELEVANT HEALTH AND SAFETY REQUIREMENTS.
- THE CONTRACTOR SHALL OBTAIN ALL NECESSARY APPROVAL FROM UTILITY OPERATORS BEFORE COMMENCING WORK UNDER OR NEAR THEIR SERVICES.
- SEDIMENT CONTROL SHALL BE INSTALLED AND OPERATIONAL BEFORE EARTHWORKS START ON SITE IN ACCORDANCE WITH COUNCIL STANDARDS.
- CONTRACTOR SHALL PROVIDE AS BUILT OF WORKING SEDIMENT CONTROL DEVICES AND CONFIRMATION OF POND/DECENT VOLUMES TO ENGINEER.

LEGEND

- 3% BDI
- PROP BDI
- STAGE BOUNDARIES

Cut/Fill Table

Number #	Minimum Elevation	Maximum Elevation	Color
1	-6.000	-5.000	Dark Red
2	-5.000	-4.000	Red
3	-4.000	-3.000	Light Red
4	-3.000	-2.000	Light Orange
5	-2.000	-1.000	Orange
6	-1.000	0.000	Light Yellow
7	0.000	1.000	Yellow
8	1.000	2.000	Light Green
9	2.000	3.000	Green
10	3.000	4.000	Light Green
11	4.000	5.000	Green
12	5.000	6.000	Light Green
13	6.000	7.000	Green
14	7.000	8.000	Dark Green

STAGES	AREA	CUT TO WASTE	IMPORTED FILL	SETTLEMENT FILL	TOTAL IMPORTED FILL*
STAGE 1	264296.67	57601	389303.35	129575	518878
STAGE 1 - SOUTH EAST SWALE	40326.74	3984	13845.7	0	13846
STAGE 2	107860.17	14634	214804.48	62515	277320
STAGE 3	132118.72	20755	258040.8	50887	348928
STAGE 4	131773.88	5460	427092.8	220755	647848
STAGE 4 - NW SWALE	54796.75	23604	7255.08	0	7255
STAGE 4 - SW SWALE	160276	102970	13823	0	13823
STAGE 4 - SOUTH DETENTION AREA	607930	285230	50889	0	50889
STAGE 5	90405.97	1971	310383.29	145754	456138
STAGE 6	109410.05	1725	349381.81	181470	530852
STAGE 7	108148.58	3290	326830.99	131449	458280
STAGE 8	177136.9	8227	426144.81	173917	600062
Bell Rd Only	53600	700	61500	0	61500
STAGE 9	157840	22500	318500	109630	428130
STAGE 10	153669.92	3844	401348.24	135341	536690
STAGE 11	96902.6	2900	273050	142621	415671
STAGE 12	87510.32	0	210567.55	95389	305956
STAGE 13	94236.58	0	255150	117118	372268
STAGE 14	115211.18	7100	248650	164986	413636
STAGE 15	322881	850	1004658	513797	1518455
STAGE 16	266351.19	3600	724050	314989	1039019
STAGE 17	94124.7	14070	100278.81	7966	108245
STAGE 18	48824.64	2700	949300	13641	108541
TOTAL	350 ha	587800 m <sup>3</sup>	6480500 m <sup>3</sup>	2751800 m <sup>3</sup>	9233000 m <sup>3</sup>

Rev	Description	By	Date
B	FOR CONSENT	AJS	03/26
A	DRAFT FOR REVIEW	AJS	02/26

By	Date	
Survey	MAVEN	05/2025
Design	AJS	12/25
Drawn	AJS	12/25
Checked	MK	03/26

**Maven Bay of Plenty**  
 115 Cameron Street, Tauranga  
 New Zealand  
 Project: **WAIRAKEI SOUTH FTA090 DEVELOPMENT**  
**BELL ROAD, PAPAMOA**  
**FOR BELL ROAD LIMITED PARTNERSHIP**

Project no.	BOP0749
Scale	1:10000 @ A3
Client file	BOP095-02201.DWG
Drawing no.	C220-0
Rev	B

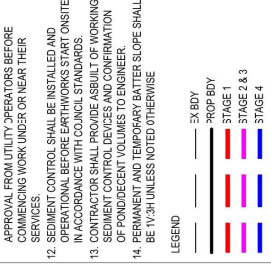


NOTE:

- CUT AND FILL VOLUME ARE BASED ON COMPARISON BETWEEN EXISTING GROUND LEVEL (EGL) AND PROPOSED SURFACE LEVEL (PGL / RL) EXCLUDING ROAD PAVEMENT AND WITHOUT TOPSOIL DEPTH.
- \*TOTAL IMPORTED FILL VOLUME IS THE FILL VOLUME EXCLUDING COMPACTION FACTOR.
- SETTLEMENT FILL VOLUMES ALLOW FOR ADDITIONAL FILL DUE TO 70% PEAT CONSOLIDATION.
- NO CONTINGENCY HAS BEEN INCLUDED IN THE CALCULATION OF THE TOTAL FILL VOLUME.
- ASSUMPTION HAS BEEN MADE THAT CUT TO WASTE VOLUME WILL NOT BE REUSED ON SITE.
- NO ALLOWANCE HAS BEEN MADE FOR COHESIVE FILL REQUIRED FOR EDGE STABILISATION.
- BELL ROAD, WETLAND, SWALES AND SWALE BATTER AREAS, HAS BEEN EXCLUDED FROM THE SETTLEMENT FILL VOLUMES
- NO ALLOWANCE HAS BEEN MADE FOR SERVICES TRENCHES

**FOR CONSENT**

- NOTES**
- ALL WORKS TO BE IN ACCORDANCE WITH WESTERN BAY OF PLENTY DEVELOPMENT CODE.
  - CO-ORDINATES IN TERMS OF BAY OF PLENTY 2000.
  - REDUCED LEVELS ARE IN TERMS OF NZVD 2016
  - AREAS, BOUNDARIES AND MEASUREMENTS ARE APPROXIMATE ONLY AND SUBJECT TO FINAL SURVEY OPERATIONS.
  - IT IS THE CONTRACTOR'S RESPONSIBILITY TO LOCATE OPERATIONS.
  - THE CONTRACTOR SHALL COMPLY WITH ALL RELEVANT HEALTH AND SAFETY REQUIREMENTS.
  - OR SHALL COMPLY WITH ALL RELEVANT HEALTH AND SAFETY REQUIREMENTS.
  - CONTRACTOR SHALL OBTAIN NECESSARY APPROVALS FROM ALL OPERATORS BEFORE COMMENCING WORK UNDER OR NEAR THEIR SERVICES.
  - SEDIMENT CONTROL SHALL BE INSTALLED AND OPERATIONAL BEFORE EARTHWORKS START ON SITE IN ACCORDANCE WITH COUNCIL STANDARDS.
  - CONTRACTOR SHALL PROVIDE ASBUILT OF WORKING SEDIMENT CONTROL DEVICES AND CONFIRMATION OF PRODUCE VOLUMES TO ENGINEER.
  - REMOVING MATERIAL FROM SLOPE SHALL BE 1:0.34 UNLESS NOTED OTHERWISE.



Rev	Description	By	Date
B	FOR CONSENT	AJS	03/26
A	DRAFT FOR REVIEW	AJS	02/26

Survey	MAVEN	05/2025
Design	AJS	12/25
Drawn	AJS	12/25
Checked	MK	03/26

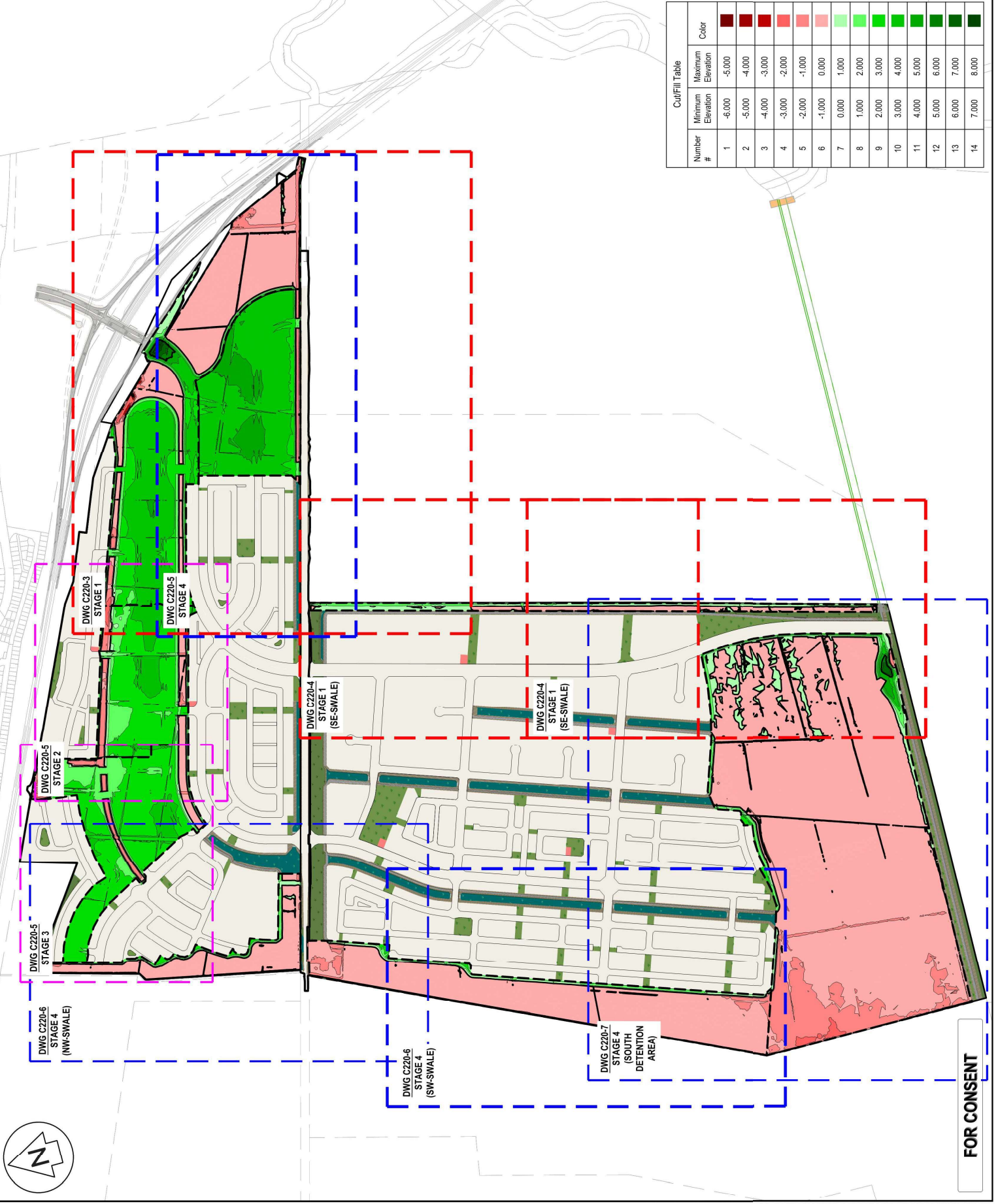


**Project**  
**WAIRAKEI SOUTH FTA090 DEVELOPMENT**  
**BELL ROAD, PAPAMOA FOR BELL ROAD LIMITED PARTNERSHIP**

**Title**  
**PROPOSED CUT FILL STAGE 1 - 4 OVERVIEW PLAN**

Project no.	BOP0749
Scale	1:10000 @ A3
Client file	BOP0749-C220-2.DWG
Drawing no.	C220-1-0
Rev	B

Number #	Minimum Elevation	Maximum Elevation	Color
1	-6.000	-5.000	Dark Red
2	-5.000	-4.000	Red
3	-4.000	-3.000	Light Red
4	-3.000	-2.000	Very Light Red
5	-2.000	-1.000	Light Pink
6	-1.000	0.000	Light Red
7	0.000	1.000	Light Green
8	1.000	2.000	Light Green
9	2.000	3.000	Light Green
10	3.000	4.000	Light Green
11	4.000	5.000	Light Green
12	5.000	6.000	Light Green
13	6.000	7.000	Light Green
14	7.000	8.000	Light Green



ORIGINAL SIZE: A3

**FOR CONSENT**

- NOTES
- WORKS TO BE IN ACCORDANCE WITH WESTERN BAY OF PLENTY DEVELOPMENT CODE
  - CO-ORDINATES IN TERMS OF BAY OF PLENTY 2000.
  - REDUCED LEVELS ARE IN TERMS OF NZVD 2016.
  - AREAS, BOUNDARIES AND MEASUREMENTS ARE APPROXIMATE ONLY AND SUBJECT TO FINAL SURVEY OPERATIONS.
  - IT IS THE CONTRACTORS RESPONSIBILITY TO LOCATE ALL SERVICES THAT MAY BE AFFECTED BY HIS OPERATIONS.
  - THE CONTRACTOR SHALL COMPLY WITH ALL RELEVANT HEALTH AND SAFETY REQUIREMENTS.
  - THE CONTRACTOR SHALL OBTAIN ALL NECESSARY PERMITS AND AUTHORISATIONS BEFORE COMMENCING WORK UNDER OR NEAR THEIR SERVICES.
  - SEDIMENT CONTROL SHALL BE INSTALLED AND OPERATIONAL BEFORE EARTHWORKS START ON SITE IN ACCORDANCE WITH COUNCIL STANDARDS.
  - CONTRACTOR SHALL PROVIDE AS BUILT OF WORKING SEDIMENT CONTROL DEVICES AND CONFIRMATION OF PONDING VOLUMES TO ENGINEER.
  - PERMANENT AND TEMPORARY BATTERS SLOPE SHALL BE 1V:3H UNLESS NOTED OTHERWISE

LEGEND

— EX BDY

— PROP BDY

Number #	Minimum Elevation	Maximum Elevation	Color
1	-6.000	-5.000	Dark Red
2	-5.000	-4.000	Red
3	-4.000	-3.000	Light Red
4	-3.000	-2.000	Very Light Red
5	-2.000	-1.000	Light Pink
6	-1.000	0.000	Light Red
7	0.000	1.000	Light Green
8	1.000	2.000	Light Green
9	2.000	3.000	Light Green
10	3.000	4.000	Light Green
11	4.000	5.000	Light Green
12	5.000	6.000	Light Green
13	6.000	7.000	Light Green
14	7.000	8.000	Light Green

- FOR CONSENT AJS 03/26
- DRAFT FOR REVIEW AJS 03/26

Rev	Description	By	Date
B	FOR CONSENT	AJS	03/26
A	DRAFT FOR REVIEW	AJS	03/26

Survey	MAVEN	Date	05/2025
Design	AJS	12/25	
Drawn	AJS	12/25	
Checked	MK	03/26	

**M** **Maven Bay of Plenty**  
 115 Cameron Street, Tauranga  
 New Zealand

**Project**  
**WAIRAKEI SOUTH FTA090**  
**DEVELOPMENT**  
**BELL ROAD, PAPAMOA**  
**FOR BELL ROAD**  
**LIMITED PARTNERSHIP**

**Title**  
**PROPOSED CUT FILL**  
**STAGE 1**  
**PLAN**

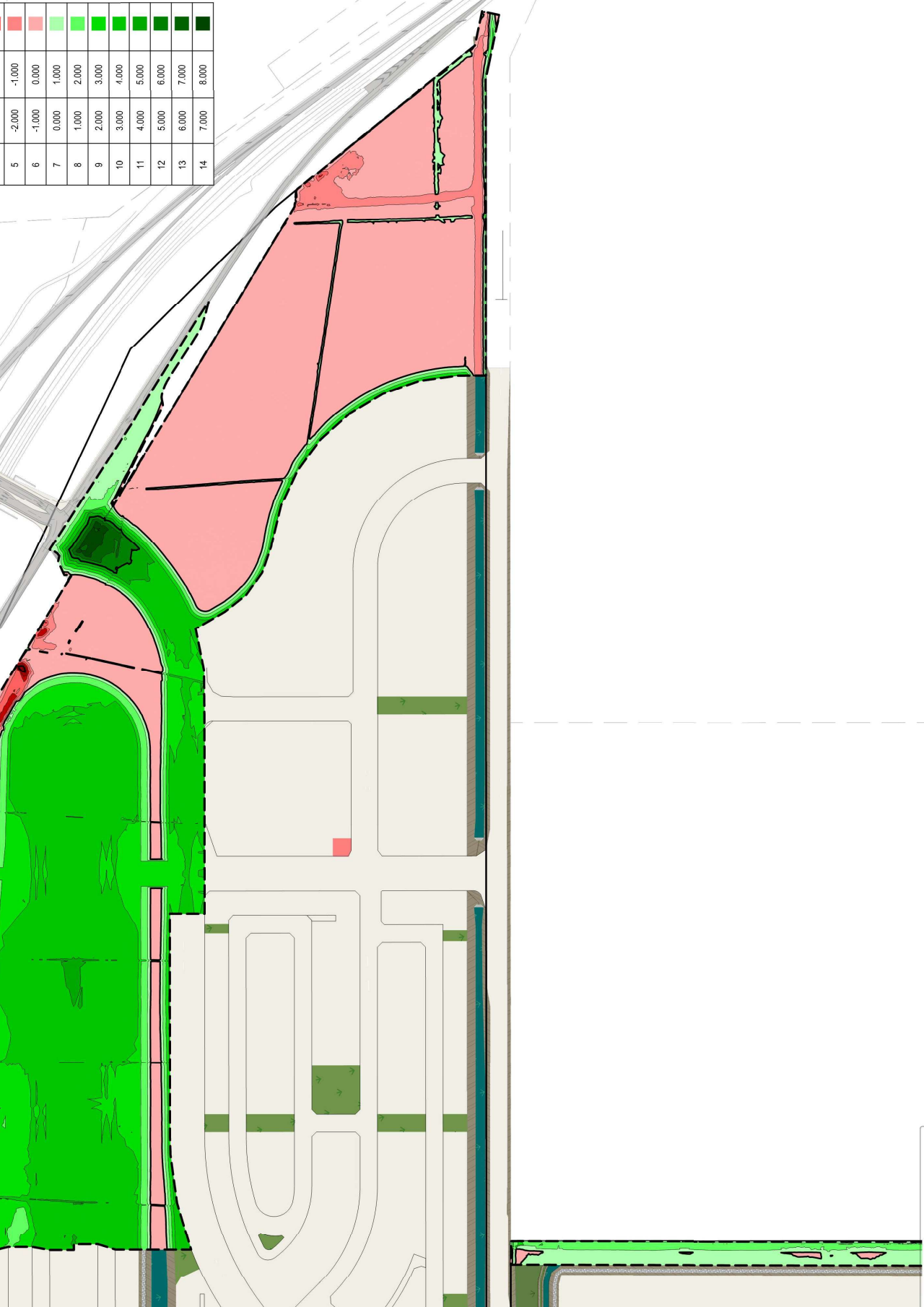
**Project no.** BOP0749  
**Scale** 1:4000 @ A3  
**Client file** BOP0749-02202.DWG  
**Drawing no.** C220-1-1

**Rev** **B**

**STAGE 1**

**FOR CONSENT**

DATE: 4/1/2026 FILE PATH: \\MVEN\WORKING\TNS\CO-25\BAY-DEVELOPMENT\MAVEN\_BOP0749\STAGE1\BELL-ROAD\7-ROAD\SWANING-CAD\DESIGN\BOP0749-C220.DWG ORIGINAL SIZE: A3



- NOTES**
1. WORKS TO BE IN ACCORDANCE WITH WESTERN BAY OF PLENTY DEVELOPMENT CODE.
  2. CO-ORDINATES IN TERMS OF BAY OF PLENTY 2000.
  3. REDUCED LEVELS ARE IN TERMS OF NZVD 2016.
  4. AREAS, BOUNDARIES AND MEASUREMENTS ARE APPROXIMATE ONLY AND SUBJECT TO FINAL SURVEY OPERATIONS.
  5. IT IS THE CONTRACTORS RESPONSIBILITY TO LOCATE ALL SERVICES THAT MAY BE AFFECTED BY HIS OPERATIONS.
  6. THE CONTRACTOR SHALL COMPLY WITH ALL RELEVANT HEALTH AND SAFETY REQUIREMENTS.
  7. THE CONTRACTOR SHALL OBTAIN ALL NECESSARY APPROVALS FROM ALL RELEVANT AGENCIES BEFORE COMMENCING WORK UNDER OR NEAR THEIR SERVICES.
  8. SEDIMENT CONTROL SHALL BE INSTALLED AND OPERATIONAL BEFORE EARTHWORKS START ON SITE IN ACCORDANCE WITH COUNCIL STANDARDS.
  9. CONTRACTOR SHALL PROVIDE ASBUILT OF WORKING SEDIMENT CONTROL DEVICES AND CONFIRMATION OF PONDING VOLUMES TO ENGINEER.
  10. PERMANENT AND TEMPORARY BATTERS SLOPE SHALL BE 1V:3H UNLESS NOTED OTHERWISE.

LEGEND  
 --- 5X BDY  
 --- 10X BDY

**Cut/Fill Table**

Number #	Minimum Elevation	Maximum Elevation	Color
1	-6.000	-5.000	Dark Red
2	-5.000	-4.000	Red
3	-4.000	-3.000	Light Red
4	-3.000	-2.000	Red-Orange
5	-2.000	-1.000	Orange
6	-1.000	0.000	Light Orange
7	0.000	1.000	Light Green
8	1.000	2.000	Light Green
9	2.000	3.000	Light Green
10	3.000	4.000	Light Green
11	4.000	5.000	Light Green
12	5.000	6.000	Light Green
13	6.000	7.000	Light Green
14	7.000	8.000	Light Green

B	FOR CONSENT	AJS	03/26
A	DRAFT FOR REVIEW	AJS	02/26
Rev	Description	By	Date
Survey	MAVEN		05/2025
Design	AJS		12/25
Drawn	AJS		12/25
Checked	MK		03/26

**Maven Bay of Plenty**  
 115 Cameron Street, Tauranga  
 www.maven.co.nz

**Project**  
**WAIRAKEI SOUTH FTA090 DEVELOPMENT**  
**BELL ROAD, PAPAMOA FOR BELL ROAD LIMITED PARTNERSHIP**

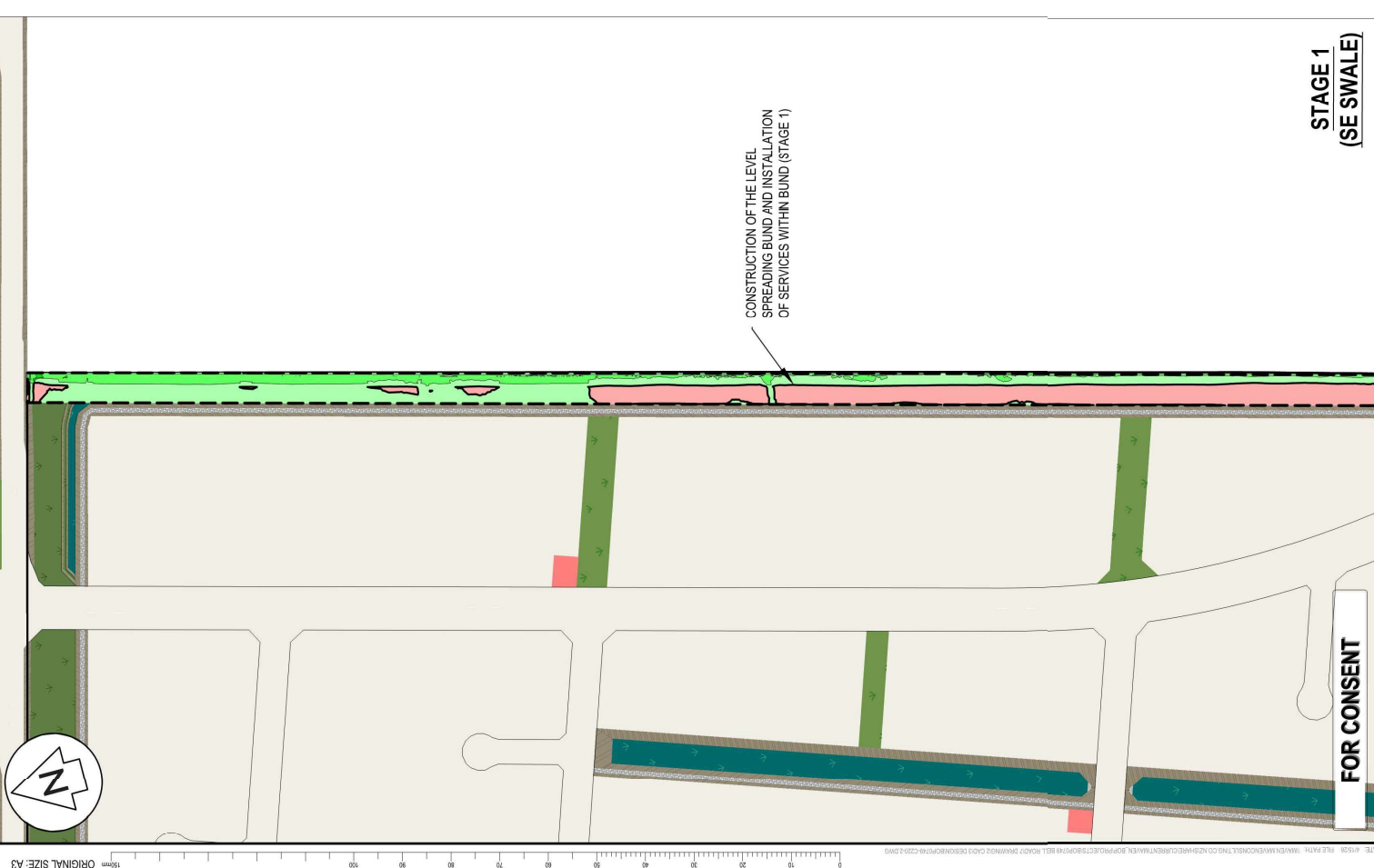
**Title**  
**PROPOSED CUT FILL STAGE 1 SE SWALE PLAN**

Project no.	BOP0749
Scale	1:4000 @ A3
Client file	BOP096-C220-2.DWG
Drawing no.	C220-1-2
Rev	B



CONSTRUCTION OF THE LEVEL SPREADING BUND AND INSTALLATION OF SERVICES WITHIN BUND (STAGE 1)

**STAGE 1 (SE SWALE)**



CONSTRUCTION OF THE LEVEL SPREADING BUND AND INSTALLATION OF SERVICES WITHIN BUND (STAGE 1)

**STAGE 1 (SE SWALE)**

**FOR CONSENT**

ORIGINAL SIZE: A3

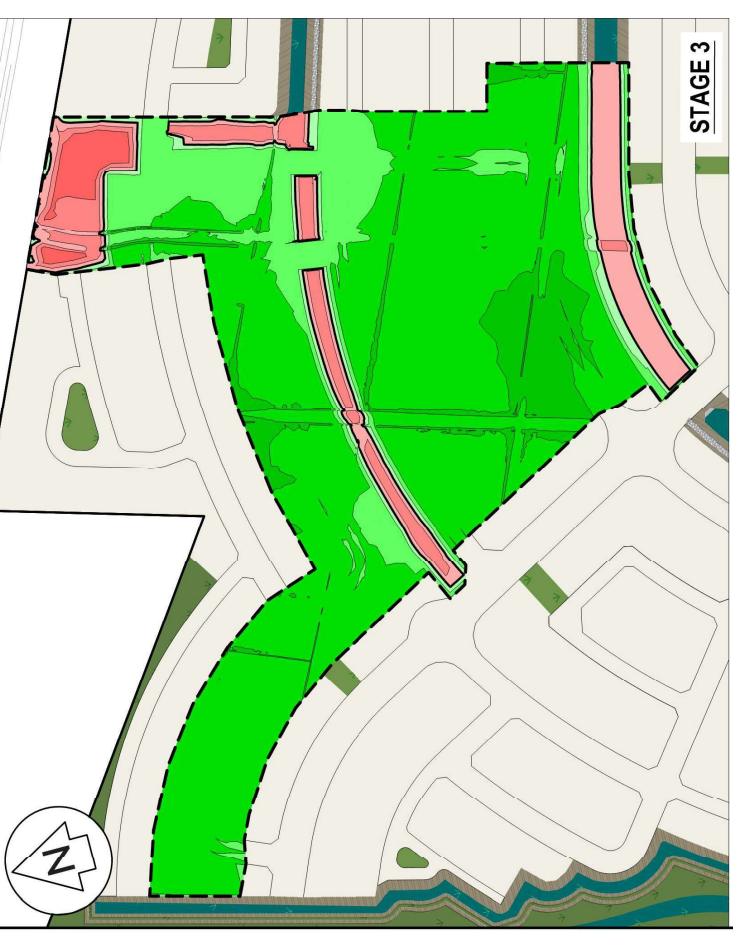
NOTES

1. ALL WORKS TO BE IN ACCORDANCE WITH WESTERN BUILDING CODES.
2. COORDINATES IN TERMS OF BAY OF PLENTY 2000.
3. REDUCED LEVELS ARE IN TERMS OF NZGD 2016.
4. AREAS BOUNDARIES AND MEASUREMENTS ARE APPROXIMATE ONLY AND SUBJECT TO FINAL SURVEY OPERATIONS.
5. IT IS THE CONTRACTORS RESPONSIBILITY TO LOCATE ALL SERVICES THAT MAY BE AFFECTED BY HIS OPERATIONS.
6. THE CONTRACTOR SHALL COMPLY WITH ALL RELEVANT HEALTH AND SAFETY REQUIREMENTS.
7. APPROVAL FROM UTILITY OPERATORS BEFORE COMMENCING WORK UNDER OR NEAR THEIR SERVICES.
8. SEDIMENT CONTROL SHALL BE INSTALLED AND OPERATIONAL BEFORE EARTHWORKS START ON SITE IN ACCORDANCE WITH COUNCIL STANDARDS.
9. THE CONTRACTOR SHALL PROVIDE AS BUILT OF WORKING SEDIMENT CONTROL DEVICES AND CONFIRMATION OF PONDCREED VOLUMES TO ENGINEER.
10. PERMANENT AND TEMPORARY BATTERS SLOPE SHALL BE 1V:3H UNLESS NOTED OTHERWISE.

LEGEND



STAGE 2



STAGE 3



ORIGINAL SIZE: A3



Rev	Description	By	Date
B	FOR CONSENT	AJS	03/26
A	DRAFT FOR REVIEW	AJS	02/26

Survey	MAVEN	05/2025
Design	AJS	12/25
Drawn	AJS	12/25
Checked	MK	03/26

**M** **M** **A** **E** **N**

Maven Bay of Plenty  
 111 Cameron Street, Tauranga  
 www.maven.co.nz  
 07 578 9999

Project  
**WAIRAKEI SOUTH FTA090 DEVELOPMENT**  
**BELL ROAD, PAPAMOA**  
**FOR BELL ROAD LIMITED PARTNERSHIP**

Title  
**PROPOSED CUT FILL STAGE 2,3,4 PLAN**

Project no.	BOP0749
Scale	1:4000 @ A3
Client file	BOP196-C220-2.DWG
Drawing no.	C220-1-3

Rev **B**



STAGE 4

FOR CONSENT

DATE: 4/28 FILE PATH: \\MVEN\MAVEN\CONSENT\FTA090\BOP196-C220-2.DWG

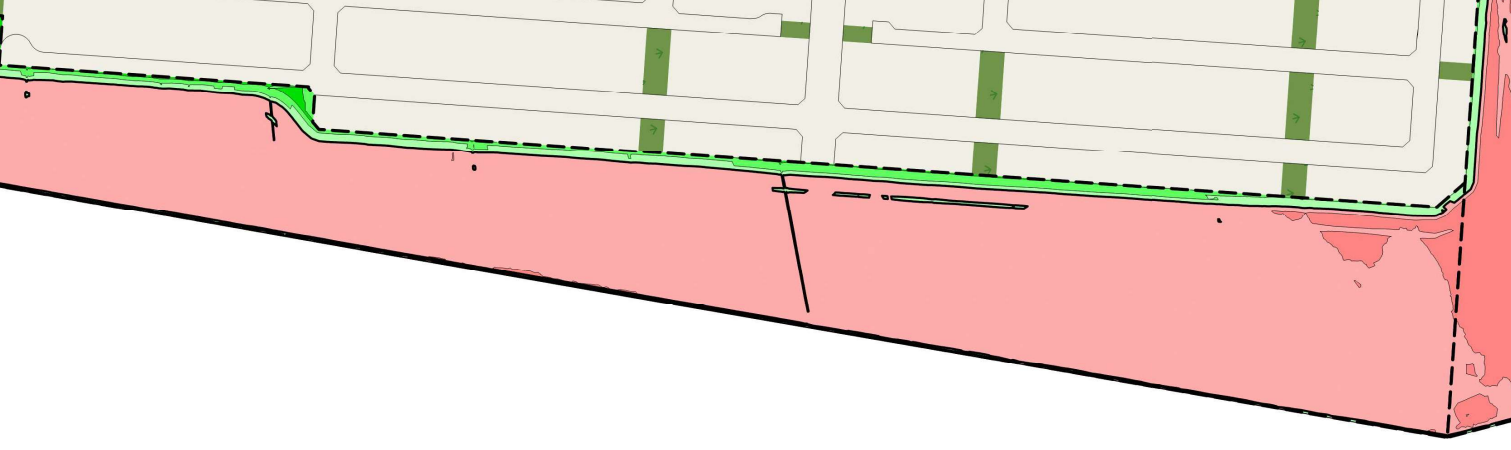
NOTES

1. WORKS TO BE IN ACCORDANCE WITH WESTERN BAY OF Plenty DEVELOPMENT CODE
2. CO-ORDINATES IN TERMS OF BAY OF Plenty 2000.
3. REDUCED LEVELS ARE IN TERMS OF NZVD 2016
4. AREAS, BOUNDARIES AND MEASUREMENTS ARE APPROXIMATE ONLY AND SUBJECT TO FINAL SURVEY OPERATIONS.
5. IT IS THE CONTRACTORS RESPONSIBILITY TO LOCATE ALL SERVICES THAT MAY BE AFFECTED BY HIS OPERATIONS.
6. THE CONTRACTOR SHALL COMPLY WITH ALL RELEVANT HEALTH AND SAFETY REQUIREMENTS.
7. THE CONTRACTOR SHALL OBTAIN ALL NECESSARY PERMITS FROM UTILITY OPERATORS BEFORE COMMENCING WORK UNDER OR NEAR THEIR SERVICES.
8. SEDIMENT CONTROL SHALL BE INSTALLED AND OPERATIONAL BEFORE EARTHWORKS START ON SITE IN ACCORDANCE WITH COUNCIL STANDARDS.
9. CONTRACTOR SHALL PROVIDE ASBUILT OF WORKING SEDIMENT CONTROL DEVICES AND CONFIRMATION OF PONDING VOLUMES TO ENGINEER.
10. PERMANENT AND TEMPORARY BATTERS SLOPE SHALL BE 1V:3H UNLESS NOTED OTHERWISE

LEGEND



Number #	Minimum Elevation	Maximum Elevation	Color
1	-6.000	-5.000	Dark Red
2	-5.000	-4.000	Red
3	-4.000	-3.000	Light Red
4	-3.000	-2.000	Very Light Red
5	-2.000	-1.000	Light Pink
6	-1.000	0.000	Light Green
7	0.000	1.000	Light Green
8	1.000	2.000	Light Green
9	2.000	3.000	Light Green
10	3.000	4.000	Light Green
11	4.000	5.000	Light Green
12	5.000	6.000	Light Green
13	6.000	7.000	Light Green
14	7.000	8.000	Light Green



**STAGE 4  
(NW & SW SWALE)**

**STAGE 4  
(NW & SW SWALE)**

**FOR CONSENT**

Rev	Description	By	Date
B	FOR CONSENT	AJS	03/26
A	DRAFT FOR REVIEW	AJS	02/26

Survey	MAVEN	Date	05/2025
Design	AJS	12/25	
Drawn	AJS	12/25	
Checked	MK	02/26	



**Project**  
**WAIRAKEI SOUTH FTA090**  
**DEVELOPMENT**  
**BELL ROAD, PAPAMOA**  
**FOR BELL ROAD**  
**LIMITED PARTNERSHIP**

**Title**  
**PROPOSED CUT FILL**  
**STAGE 4 NW & SW SWALE**  
**PLAN**

Project no.	BOP0749
Scale	1:4000 @ A3
Client file	BOP0916-C220-2.DWG
Drawing no.	C220-1-4
Rev	B





- NOTES
- WORKS TO BE IN ACCORDANCE WITH WESTERN BAY OF PLENTY DEVELOPMENT CODE.
  - CO-ORDINATES IN TERMS OF BAY OF PLENTY 2000.
  - REDUCED LEVELS ARE IN TERMS OF NZVD 2016.
  - AREAS, BOUNDARIES AND MEASUREMENTS ARE APPROXIMATE ONLY AND SUBJECT TO FINAL SURVEY OPERATIONS.
  - IT IS THE CONTRACTORS RESPONSIBILITY TO LOCATE ALL SERVICES THAT MAY BE AFFECTED BY HIS OPERATIONS.
  - THE CONTRACTOR SHALL COMPLY WITH ALL RELEVANT HEALTH AND SAFETY REQUIREMENTS.
  - THE CONTRACTOR SHALL OBTAIN ALL NECESSARY CONSENTS FROM ALL RELEVANT AGENCIES BEFORE COMMENCING WORK UNDER OR NEAR THEIR SERVICES.
  - SEDIMENT CONTROL SHALL BE INSTALLED AND OPERATIONAL BEFORE EARTHWORKS START ON SITE IN ACCORDANCE WITH COUNCIL STANDARDS.
  - CONTRACTOR SHALL PROVIDE ASBUILT OF WORKING SEDIMENT CONTROL DEVICES AND CONFIRMATION OF PONDING VOLUMES TO ENGINEER.
  - PERMANENT AND TEMPORARY BATTERS SLOPE SHALL BE 1V:3H UNLESS NOTED OTHERWISE.

- LEGEND
- 3X BDY
  - PROP BDY
  - STAGE 5 & 6
  - STAGE 7 & 8
  - BELL RD

Cut/Fill Table

Number #	Minimum Elevation	Maximum Elevation	Color
1	-6.000	-5.000	Dark Red
2	-5.000	-4.000	Red
3	-4.000	-3.000	Light Red
4	-3.000	-2.000	Light Orange
5	-2.000	-1.000	Orange
6	-1.000	0.000	Light Green
7	0.000	1.000	Green
8	1.000	2.000	Light Green
9	2.000	3.000	Green
10	3.000	4.000	Light Green
11	4.000	5.000	Green
12	5.000	6.000	Light Green
13	6.000	7.000	Green
14	7.000	8.000	Light Green



DATE: 4/28/24 FILE PATH: \\M:\EN\M\W\CONSENT\T\TNS\CO\NZB\848\CLIENT\M\VEN\BOP\99\03\3100\978\BELL\ROAD7\SWAINSON\CA03\DESIGN\BOP\99\03\3100\978\C220.DWG ORIGINAL SIZE: A3

Rev	Description	By	Date
B	FOR CONSENT	AJS	03/26
A	DRAFT FOR REVIEW	AJS	02/26

Survey	MAVEN	05/2025
Design	AJS	12/25
Drawn	AJS	12/25
Checked	MK	02/26



Project  
**WAIRAKEI SOUTH FTA090 DEVELOPMENT**  
**BELL ROAD, PAPAMOA**  
**FOR BELL ROAD LIMITED PARTNERSHIP**

Title  
**PROPOSED CUT FILL STAGE 5-8 & BELL RD OVERVIEW PLAN**

Project no.	BOP0749
Scale	1:10000 @ A3
Clad file	BOP\99\03\3100\978\C220.DWG
Drawing no.	C220-2-0
Rev	B

**FOR CONSENT**

NOTES

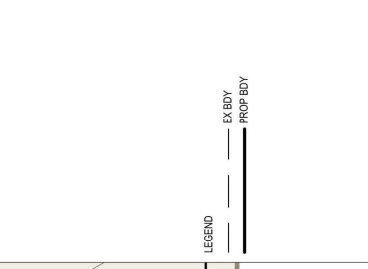
- WORKS TO BE IN ACCORDANCE WITH WESTERN BAY OF PLENTY DEVELOPMENT CODE
- COORDINATES IN TERMS OF BAY OF PLENTY 2000.
- REDUCED LEVELS ARE IN TERMS OF NZVD 2016
- AREAS, BOUNDARIES AND MEASUREMENTS ARE APPROXIMATE ONLY AND SUBJECT TO FINAL SURVEY OPERATIONS.
- IT IS THE CONTRACTORS RESPONSIBILITY TO LOCATE ALL SERVICES THAT MAY BE AFFECTED BY HIS OPERATIONS.
- THE CONTRACTOR SHALL COMPLY WITH ALL RELEVANT HEALTH AND SAFETY REQUIREMENTS.
- THE CONTRACTOR SHALL OBTAIN ALL NECESSARY APPROVALS FROM UTILITY PROVIDERS BEFORE COMMENCING WORK UNDER OR NEAR THEIR SERVICES.
- SEDIMENT CONTROL SHALL BE INSTALLED AND OPERATIONAL BEFORE EARTHWORKS START ON SITE IN ACCORDANCE WITH COUNCIL STANDARDS.
- CONTRACTOR SHALL PROVIDE ASBUILT OF WORKING SEDIMENT CONTROL DEVICES AND CONFIRMATION OF PONDING VOLUMES TO ENGINEER.
- PERMANENT AND TEMPORARY BATTER SLOPE SHALL BE 1V:3H UNLESS NOTED OTHERWISE

LEGEND



Cut/Fill Table

Number #	Minimum Elevation	Maximum Elevation	Color
1	-6.000	-5.000	Dark Red
2	-5.000	-4.000	Red
3	-4.000	-3.000	Light Red
4	-3.000	-2.000	Very Light Red
5	-2.000	-1.000	Light Pink
6	-1.000	0.000	Light Green
7	0.000	1.000	Light Green
8	1.000	2.000	Light Green
9	2.000	3.000	Light Green
10	3.000	4.000	Light Green
11	4.000	5.000	Light Green
12	5.000	6.000	Light Green
13	6.000	7.000	Light Green
14	7.000	8.000	Light Green



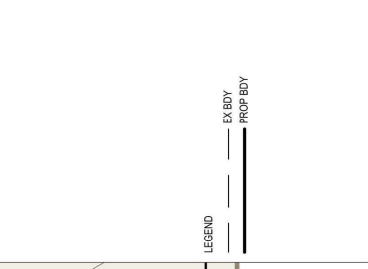
STAGE 5

LEGEND



Cut/Fill Table

Number #	Minimum Elevation	Maximum Elevation	Color
1	-6.000	-5.000	Dark Red
2	-5.000	-4.000	Red
3	-4.000	-3.000	Light Red
4	-3.000	-2.000	Very Light Red
5	-2.000	-1.000	Light Pink
6	-1.000	0.000	Light Green
7	0.000	1.000	Light Green
8	1.000	2.000	Light Green
9	2.000	3.000	Light Green
10	3.000	4.000	Light Green
11	4.000	5.000	Light Green
12	5.000	6.000	Light Green
13	6.000	7.000	Light Green
14	7.000	8.000	Light Green



STAGE 6

Rev	Description	By	Date
B	FOR CONSENT	AJS	03/26
A	DRAFT FOR REVIEW	AJS	02/26

Survey	MAVEN	06/2025
Design	AJS	12/25
Drawn	AJS	12/25
Checked	MK	02/26

**Maven Bay of Plenty**  
 111 Cameron Street, Tauranga  
 Tauranga, Bay of Plenty  
 www.maven.co.nz

**Project**  
**WAIRAKEI SOUTH FTA090 DEVELOPMENT**  
**BELL ROAD, PAPAMOA**  
**FOR BELL ROAD LIMITED PARTNERSHIP**

Project no.	BOP0749
Scale	1:4000 @ A3
Clad file	BOP0749-C220-2.DWG
Drawing no.	C220-2-1
Rev	B

FOR CONSENT

PROPOSED CUT FILL

STAGE 5,6

PLAN





ORIGINAL SIZE: A3



Number #	Minimum Elevation	Maximum Elevation	Color
1	-6.000	-5.000	Dark Red
2	-5.000	-4.000	Red
3	-4.000	-3.000	Light Red
4	-3.000	-2.000	Lighter Red
5	-2.000	-1.000	Lightest Red
6	-1.000	0.000	Lightest Red
7	0.000	1.000	Lightest Green
8	1.000	2.000	Light Green
9	2.000	3.000	Light Green
10	3.000	4.000	Light Green
11	4.000	5.000	Light Green
12	5.000	6.000	Light Green
13	6.000	7.000	Light Green
14	7.000	8.000	Light Green

- NOTES
1. WORKS TO BE IN ACCORDANCE WITH WESTERN BAY OF PLENTY DEVELOPMENT CODE
  2. COORDINATES IN TERMS OF BAY OF PLENTY 2000
  3. REDUCED LEVELS ARE IN TERMS OF NZTD 2016
  4. AREAS, BOUNDARIES AND MEASUREMENTS ARE APPROXIMATE ONLY AND SUBJECT TO FINAL SURVEY OPERATIONS.
  5. IT IS THE CONTRACTORS RESPONSIBILITY TO LOCATE ALL SERVICES THAT MAY BE AFFECTED BY HIS OPERATIONS.
  6. THE CONTRACTOR SHALL COMPLY WITH ALL RELEVANT HEALTH AND SAFETY REQUIREMENTS.
  7. THE CONTRACTOR SHALL OBTAIN ALL NECESSARY PERMITS FROM UTILITY OPERATORS BEFORE COMMENCING WORK UNDER OR NEAR THEIR SERVICES.
  8. SEDIMENT CONTROL SHALL BE INSTALLED AND OPERATIONAL BEFORE EARTHWORKS START ON SITE IN ACCORDANCE WITH COUNCIL STANDARDS.
  9. CONTRACTOR SHALL PROVIDE ASBUILT OF WORKING SEDIMENT CONTROL DEVICES AND CONFIRMATION OF PONDERENT VOLUMES TO ENGINEER.
  10. PERMANENT AND TEMPORARY BATTERS SLOPE SHALL BE 1V:3H UNLESS NOTED OTHERWISE

LEGEND

--- EX BDY

--- PROP BDY

BELL RD

FOR CONSENT

FOR CONSENT

FOR CONSENT

Rev	Description	By	Date
B	FOR CONSENT	AJS	03/26
A	DRAFT FOR REVIEW	AJS	02/26

Survey	MAVEN	Date	05/2025
Design	AJS	12/25	
Drawn	AJS	12/25	
Checked	MK	03/26	

**M** Maven Bay of Plenty  
 111 Cameron Street, Tauranga  
 3110 Tauranga, New Zealand  
 www.mavens.co.nz

Project  
**WAIRAKEI SOUTH FTA090 DEVELOPMENT**  
**BELL ROAD, PAPAMOA**  
**FOR BELL ROAD LIMITED PARTNERSHIP**

Title  
**PROPOSED CUT FILL BELL RD PLAN**

Project no. BOP0749  
 Scale 1:4000 @ A3  
 Client file BOP0749-C220-2.DWG  
 Drawing no. C220-2-3

Rev B

- NOTES**
- WORKS TO BE IN ACCORDANCE WITH WESTERN BAY OF PLENTY DEVELOPMENT CODE
  - COORDINATES IN TERMS OF BAY OF PLENTY 2000.
  - REDUCED LEVELS ARE IN TERMS OF NZVD 2016
  - AREAS, BOUNDARIES AND MEASUREMENTS ARE APPROXIMATE ONLY AND SUBJECT TO FINAL SURVEY OPERATIONS.
  - IT IS THE CONTRACTORS RESPONSIBILITY TO LOCATE ALL SERVICES THAT MAY BE AFFECTED BY HIS OPERATIONS.
  - THE CONTRACTOR SHALL COMPLY WITH ALL RELEVANT HEALTH AND SAFETY REQUIREMENTS.
  - THE CONTRACTOR SHALL OBTAIN ALL NECESSARY PERMITS AND APPROVALS FROM THE RELEVANT AUTHORITIES BEFORE COMMENCING WORK UNDER OR NEAR THEIR SERVICES.
  - SEDIMENT CONTROL SHALL BE INSTALLED AND OPERATIONAL BEFORE EARTHWORKS START ON SITE IN ACCORDANCE WITH COUNCIL STANDARDS.
  - CONTRACTOR SHALL PROVIDE ASBUILT OF WORKING SEDIMENT CONTROL DEVICES AND CONFIRMATION OF PONDING VOLUMES TO ENGINEER.
  - PERMANENT AND TEMPORARY BATTERS/SLOPE SHALL BE 1V:3H UNLESS NOTED OTHERWISE

**LEGEND**

— 5% BDY  
 - - - 10% BDY

**Cut/Fill Table**

Number #	Minimum Elevation	Maximum Elevation	Color
1	-6.000	-5.000	Dark Red
2	-5.000	-4.000	Red
3	-4.000	-3.000	Light Red
4	-3.000	-2.000	Red-Orange
5	-2.000	-1.000	Orange
6	-1.000	0.000	Light Orange
7	0.000	1.000	Light Green
8	1.000	2.000	Light Green
9	2.000	3.000	Light Green
10	3.000	4.000	Light Green
11	4.000	5.000	Light Green
12	5.000	6.000	Light Green
13	6.000	7.000	Light Green
14	7.000	8.000	Light Green

**FOR CONSENT** AJS 03/26

**DRAFT FOR REVIEW** AJS 02/26

Rev	Description	By	Date
Survey	MAVEN		05/2025
Design	AJS		12/25
Drawn	AJS		12/25
Checked	MK		02/26

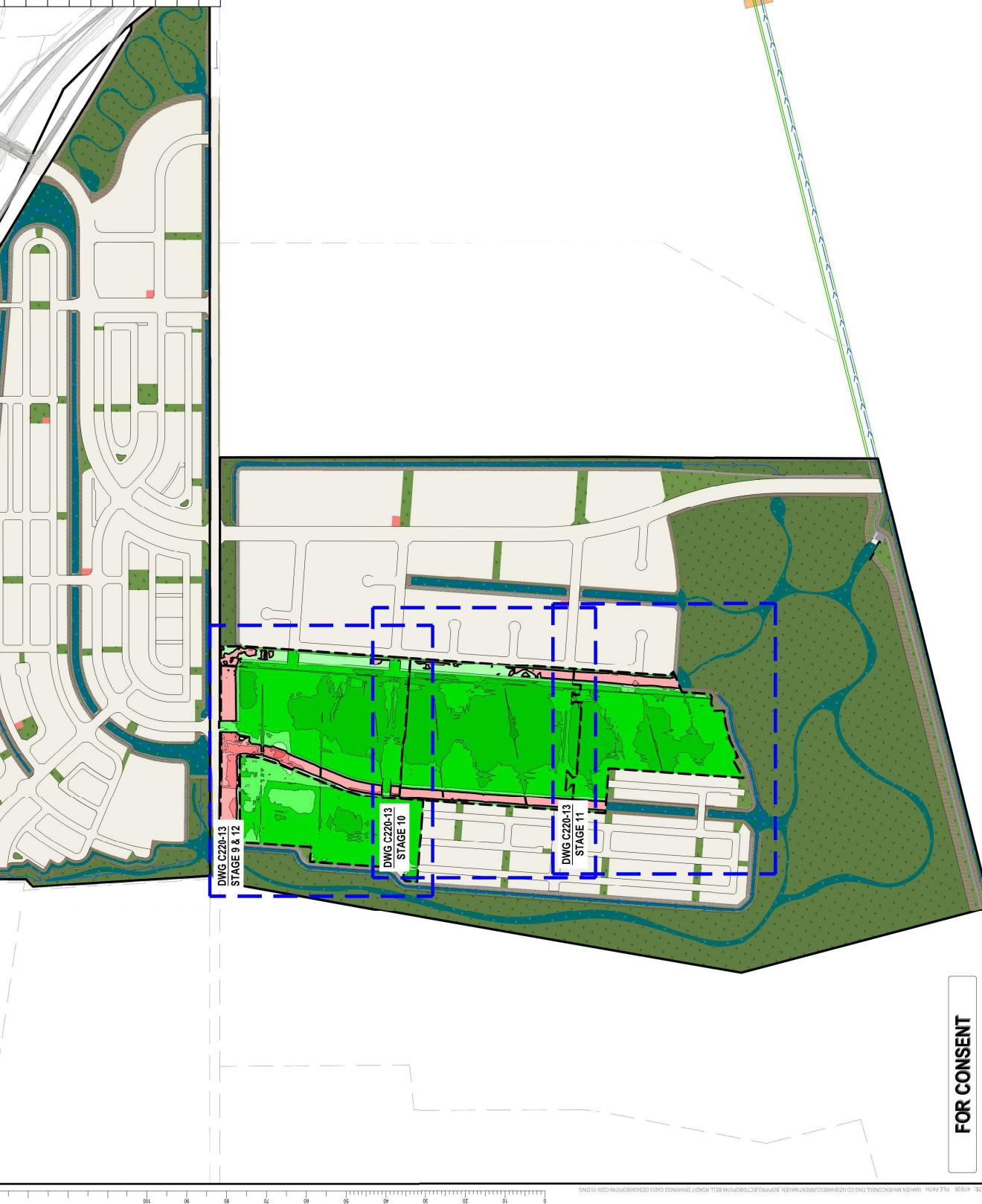
**Maven Bay of Plenty**

115 Cameron Street, Tauranga  
 www.maven.co.nz

**Project**  
**WAIRAKEI SOUTH FTA090 DEVELOPMENT**  
**BELL ROAD, PAPAMOA**  
**FOR BELL ROAD LIMITED PARTNERSHIP**

**Title**  
**PROPOSED CUT FILL**  
**STAGE 9-12**  
**OVERVIEW PLAN**

**Project no.** BOP0749  
**Scale** 1:10000 @ A3  
**Client file** BOP096-C220-10.DWG  
**Drawing no.** C220-3-0  
**Rev** B



**FOR CONSENT**



- NOTES
- WORKS TO BE IN ACCORDANCE WITH WESTERN BAY OF PLENTY DEVELOPMENT CODE.
  - CO-ORDINATES IN TERMS OF BAY OF PLENTY 2010.
  - REDUCED LEVELS ARE IN TERMS OF NZVD 2016.
  - AREAS, BOUNDARIES AND MEASUREMENTS ARE APPROXIMATE ONLY AND SUBJECT TO FINAL SURVEY OPERATIONS.
  - IT IS THE CONTRACTORS RESPONSIBILITY TO LOCATE ALL SERVICES THAT MAY BE AFFECTED BY HIS OPERATIONS.
  - THE CONTRACTOR SHALL COMPLY WITH ALL RELEVANT HEALTH AND SAFETY REQUIREMENTS.
  - THE CONTRACTOR SHALL OBTAIN ALL NECESSARY PERMITS AND AUTHORISATIONS BEFORE COMMENCING WORK UNDER OR NEAR THEIR SERVICES.
  - SEDIMENT CONTROL SHALL BE INSTALLED AND OPERATIONAL BEFORE EARTHWORKS START ON SITE IN ACCORDANCE WITH COUNCIL STANDARDS.
  - CONTRACTOR SHALL PROVIDE ASBUILT OF WORKING SEDIMENT CONTROL DEVICES AND CONFIRMATION OF PONDICENT VOLUMES TO ENGINEER.
  - PERMANENT AND TEMPORARY BATTERS SLOPE SHALL BE 1V:3H UNLESS NOTED OTHERWISE.

LEGEND

— 5% BDY  
 - - - 10% BDY

Cut/Fill Table

Number #	Minimum Elevation	Maximum Elevation	Color
1	-6.000	-5.000	Dark Red
2	-5.000	-4.000	Red
3	-4.000	-3.000	Light Red
4	-3.000	-2.000	Red-Orange
5	-2.000	-1.000	Orange
6	-1.000	0.000	Light Orange
7	0.000	1.000	Light Green
8	1.000	2.000	Green
9	2.000	3.000	Light Green
10	3.000	4.000	Green
11	4.000	5.000	Light Green
12	5.000	6.000	Green
13	6.000	7.000	Light Green
14	7.000	8.000	Green

B	FOR CONSENT	AJS	03/26
A	DRAFT FOR REVIEW	AJS	02/26
Rev	Description	By	Date
	Survey	MAVEN	05/2025
	Design	AJS	12/25
	Drawn	AJS	12/25
	Checked	MK	02/26

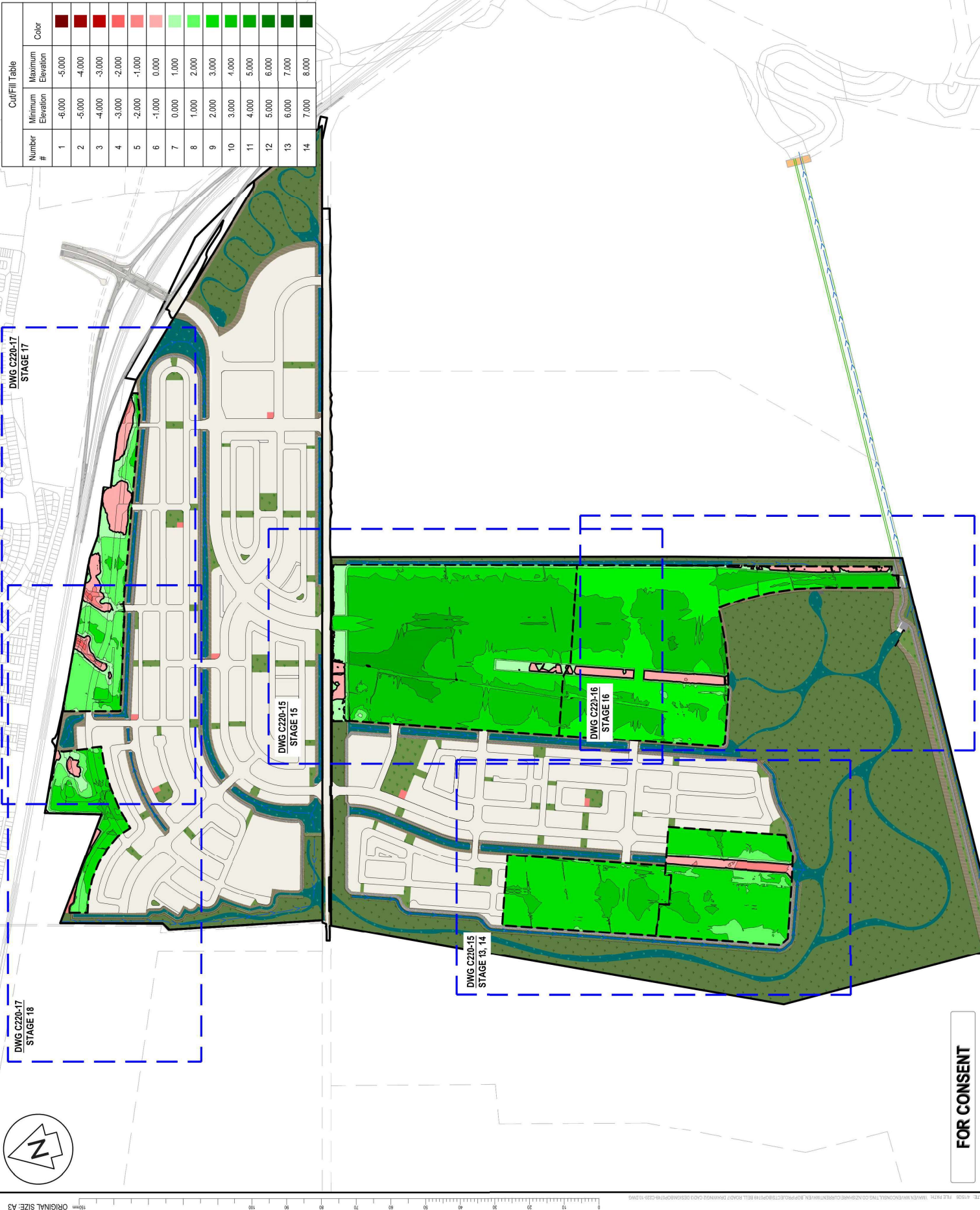
**M** **MAVEN** **Bay of Plenty**

115 Cameron Street, Tauranga  
 www.maven.co.nz  
 New Zealand

**Project**  
**WAIRAKEI SOUTH FTA090 DEVELOPMENT**  
**BELL ROAD, PAPAMOA**  
**FOR BELL ROAD LIMITED PARTNERSHIP**

**Title**  
**PROPOSED CUT FILL**  
**STAGE 13-18**  
**OVERVIEW PLAN**

**Project no.** BOP0749  
**Scale** 1:10000 @ A3  
**Card file** BOP096-C220-13.DWG  
**Drawing no.** C220-4-0  
**Rev** B



**FOR CONSENT**



- NOTES
- WORKS TO BE IN ACCORDANCE WITH WESTERN BAY OF PLENTY DEVELOPMENT CODE.
  - CO-ORDINATES IN TERMS OF BAY OF PLENTY 2010.
  - REDUCED LEVELS ARE IN TERMS OF NZVD 2016.
  - AREAS, BOUNDARIES AND MEASUREMENTS ARE APPROXIMATE ONLY AND SUBJECT TO FINAL SURVEY.
  - IT IS THE CONTRACTORS RESPONSIBILITY TO LOCATE ALL SERVICES THAT MAY BE AFFECTED BY HIS OPERATIONS.
  - THE CONTRACTOR SHALL COMPLY WITH ALL RELEVANT HEALTH AND SAFETY REQUIREMENTS.
  - THE CONTRACTOR SHALL OBTAIN ALL NECESSARY PERMITS FROM UTILITY OWNERS BEFORE COMMENCING WORK UNDER OR NEAR THEIR SERVICES.
  - SEDIMENT CONTROL SHALL BE INSTALLED AND OPERATIONAL BEFORE EARTHWORKS START ON SITE IN ACCORDANCE WITH COUNCIL STANDARDS.
  - CONTRACTOR SHALL PROVIDE ASBUILT OF WORKING SEDIMENT CONTROL DEVICES AND CONFIRMATION OF PONDING VOLUMES TO ENGINEER.
  - PERMANENT AND TEMPORARY BATTER SLOPE SHALL BE 1V:3H UNLESS NOTED OTHERWISE.

LEGEND

—— 5% BDY  
 - - - - - 10% BDY

Cut/Fill Table

Number #	Minimum Elevation	Maximum Elevation	Color
1	-6.000	-5.000	Dark Red
2	-5.000	-4.000	Red
3	-4.000	-3.000	Light Red
4	-3.000	-2.000	Red-Orange
5	-2.000	-1.000	Orange
6	-1.000	0.000	Light Orange
7	0.000	1.000	Light Green
8	1.000	2.000	Light Green
9	2.000	3.000	Light Green
10	3.000	4.000	Light Green
11	4.000	5.000	Light Green
12	5.000	6.000	Light Green
13	6.000	7.000	Light Green
14	7.000	8.000	Light Green

B	FOR CONSENT	AJS	02/26
A	DRAFT FOR REVIEW	AJS	02/26
Rev	Description	By	Date
	Survey	MAVEN	05/2025
	Design	AJS	12/25
	Drawn	AJS	12/25
	Checked	MK	02/26

Project

**MAVEN**  
 Wairakei South FTA090 Development  
 Bell Road, Papamoa  
 For Bell Road Limited Partnership

Maven Bay of Plenty  
 115 Cameron Street, Tauranga  
 New Zealand

Title

**PROPOSED CUT FILL  
 STAGE 16  
 PLAN**

Project no. BOP0749  
 Scale 1:4000 @ A3  
 Cad file BOP0749-C220-16.DWG  
 Drawing no. C220-16  
 Rev E



DATE: 4/28/26 FILE PATH: \\MAVEN\MAVEN\CONSULT\TIN\CO\_NZ\BAYDEVELOPMENT\MAVEN\_BOP0749\STAGE16\BELL\_ROAD7\_PSWAINING\CA03\_DESIGN\BOP0749\_C220-16.DWG ORIGINAL SIZE: A3

**FOR CONSENT**

**STAGE 16**

