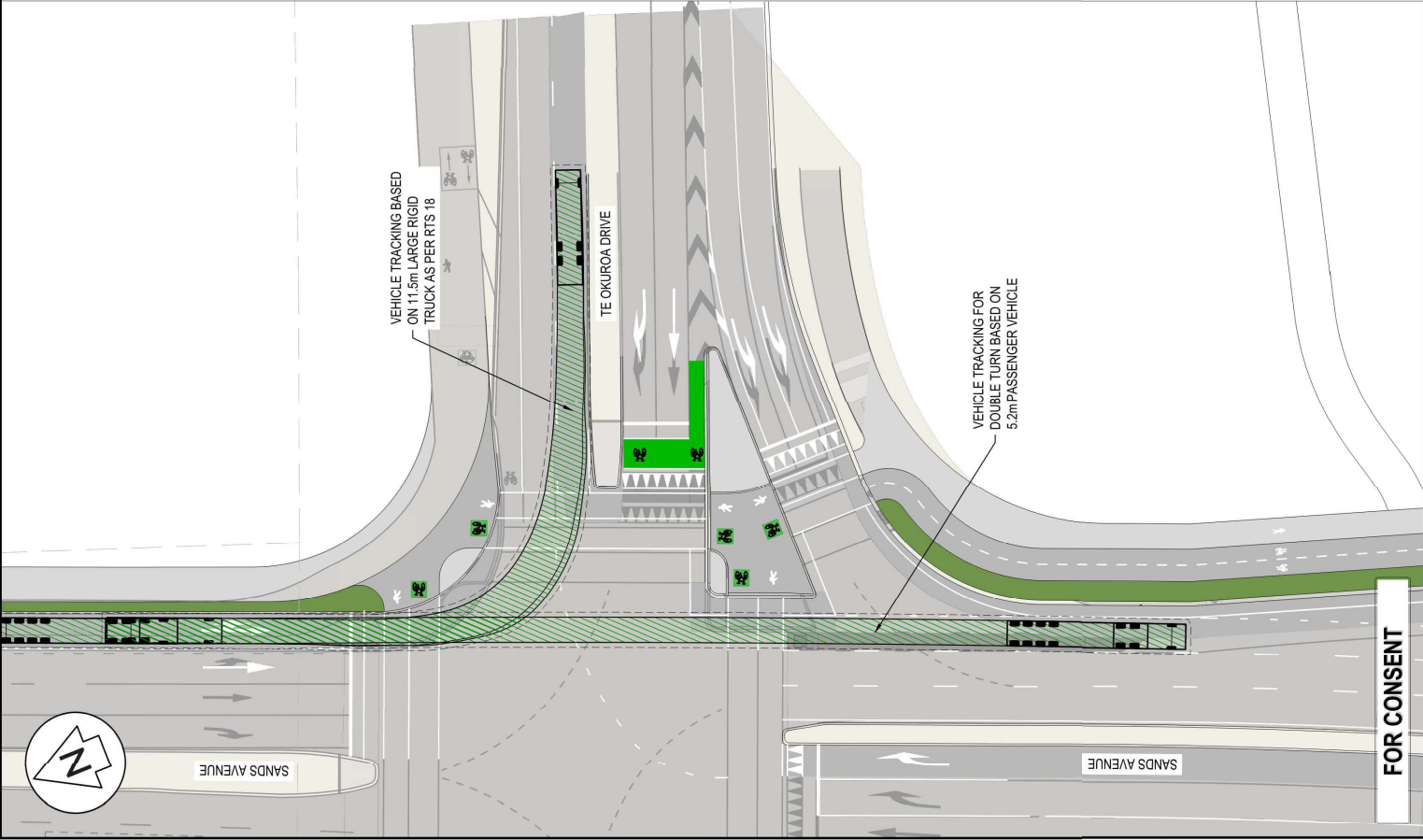
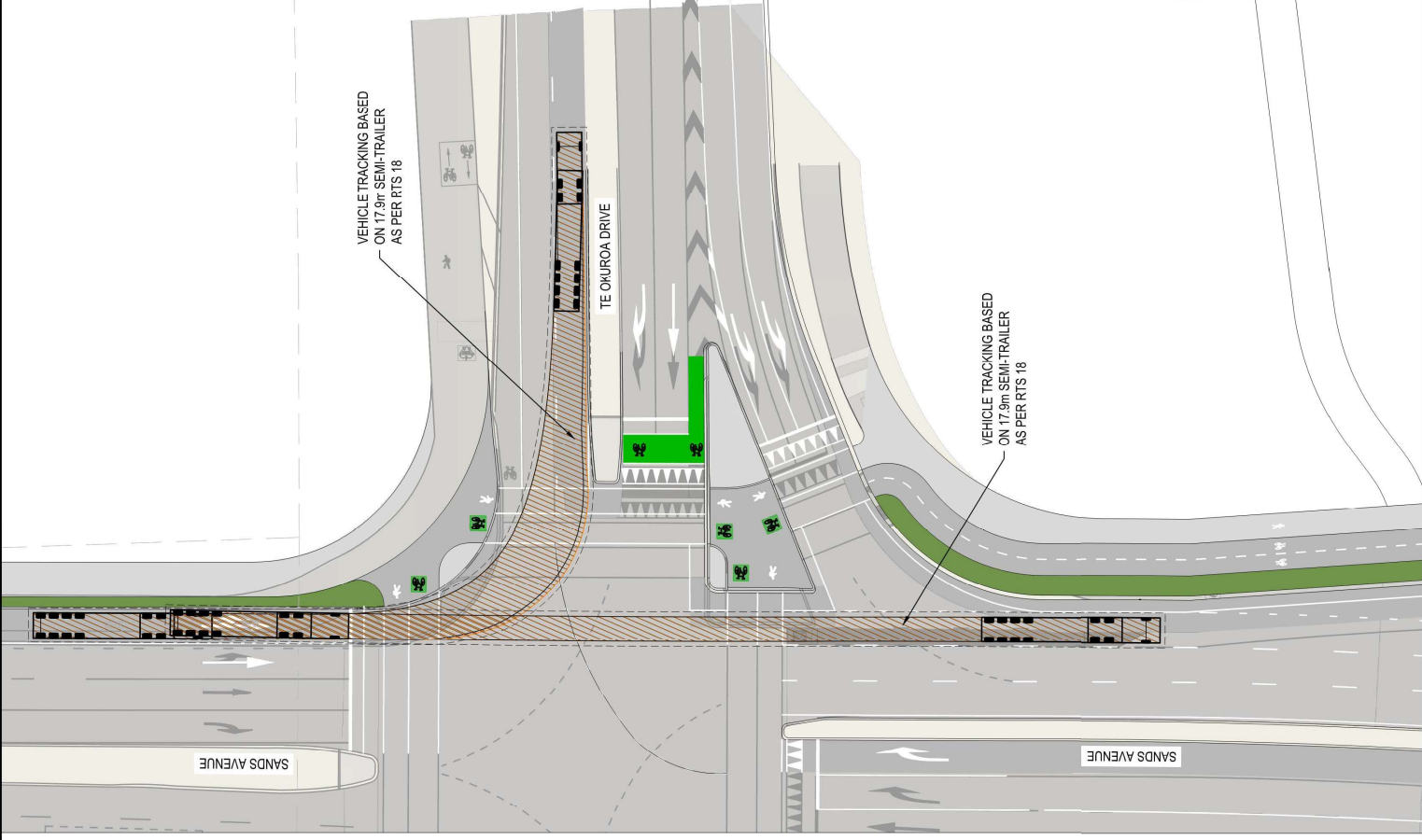




- NOTES
1. ALL WORKS TO BE IN ACCORDANCE WITH WESTERN BAY OF PLENTY DEVELOPMENT CODE.
  2. VEHICLE TRACKING BASED ON RTS 18 (NEW ZEALAND ON-ROAD TRACKING CURVES FOR HEAVY MOTOR VEHICLES).
  3. REFER TO C350 SERIES DRAWINGS FOR INTERSECTION DETAILS.



FOR CONSENT

Rev	Description	By	Date
B	FOR CONSENT	AJS	04/26
A	FOR DISCUSSION	AJS	04/26

Survey	NAVEN	Date	05/2025
Design	AJS	Date	04/26
Drawn	AJS	Date	04/26
Checked	JKK	Date	04/26

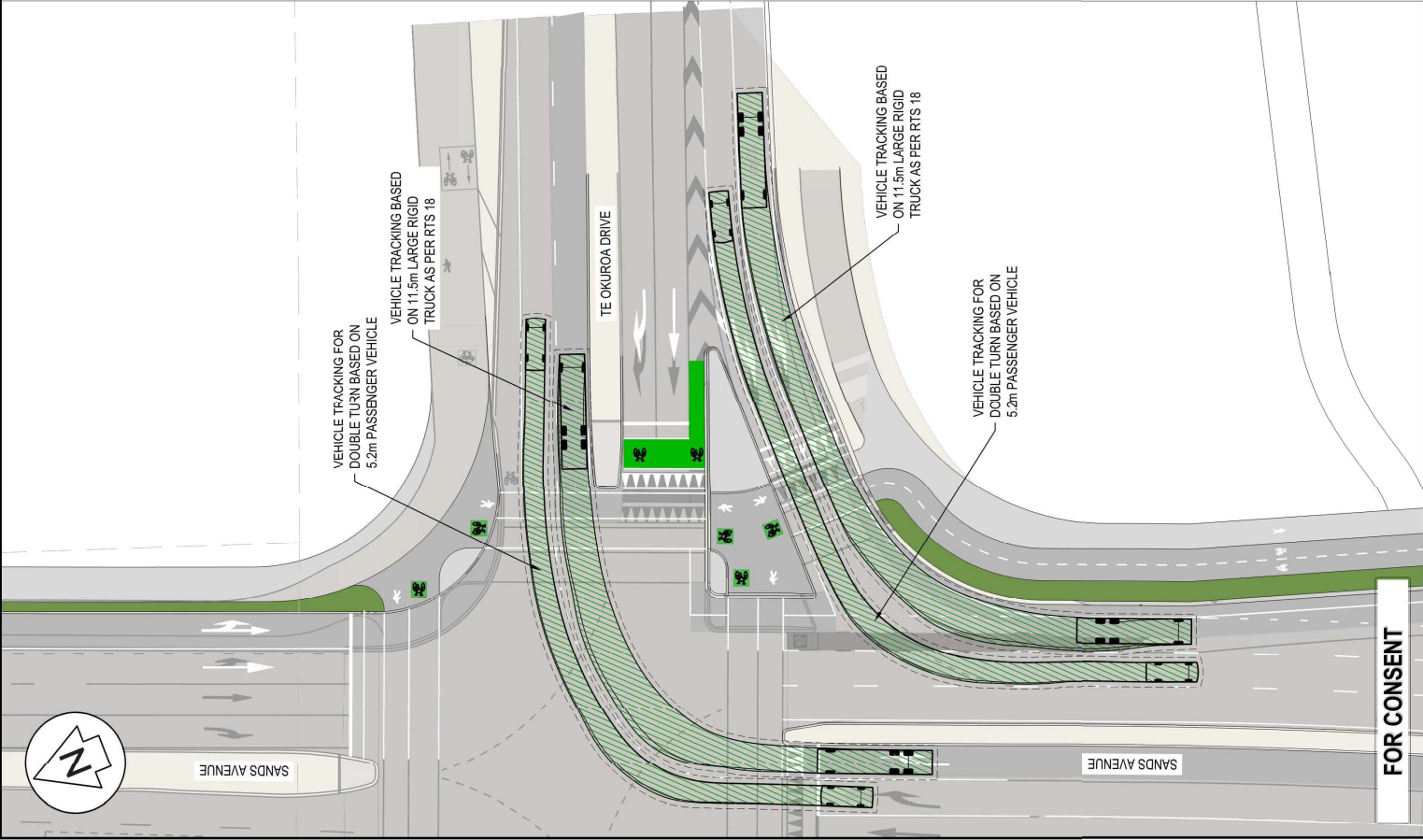
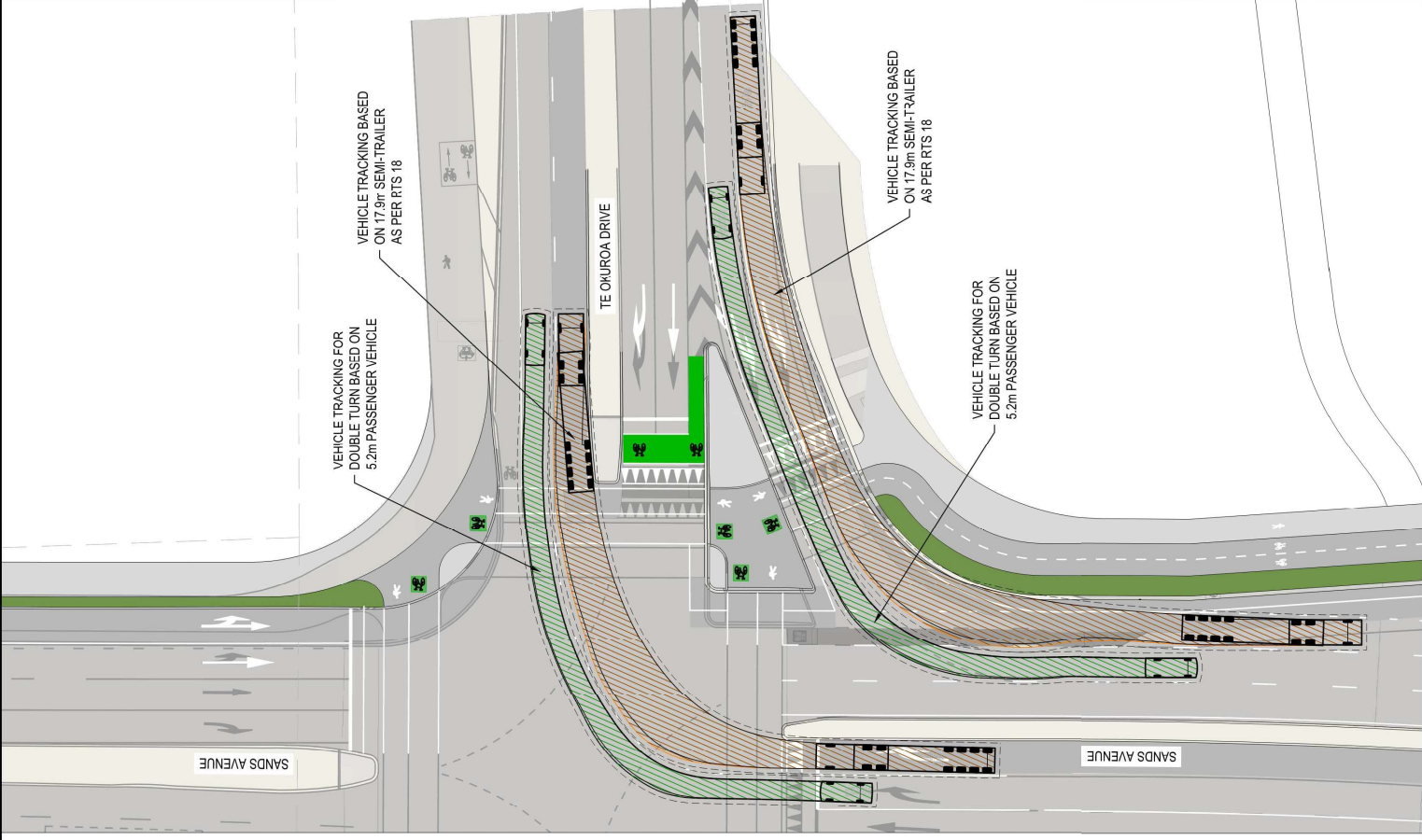


Project: **WAIRAKEI SOUTH FTA090 DEVELOPMENT**  
**BELL ROAD, PAPAMOA**  
**FOR BELL ROAD**  
**LIMITED PARTNERSHIP**

Title: **PROPOSED ROADING VEHICLE TRACKING TE OKUROA DR. INT.**

Project no.	BOP0749
Scale	1:500 @ A3
Cad file	BOP0749-C370.DWG
Drawing no.	C370-1-2
Rev	A

- NOTES
1. ALL WORKS TO BE IN ACCORDANCE WITH WESTERN BAY OF PLENTY DEVELOPMENT CODE.
  2. VEHICLE TRACKING BASED ON RTS 18 (NEW ZEALAND ON-ROAD TRACKING CURVES FOR HEAVY MOTOR VEHICLES).
  3. REFER TO C350 SERIES DRAWINGS FOR INTERSECTION DETAILS.



FOR CONSENT

Rev	Description	By	Date
B	FOR CONSENT	AJS	04/26
A	FOR DISCUSSION	AJS	04/25

Survey	NAVEN	Date	05/2025
Design	AJS	Date	04/26
Drawn	AJS	Date	04/26
Checked	HK	Date	04/26

**Maven Bay of Plenty**  
 116 Cameron Street, Tauranga  
 New Zealand  
 www.maven.co.nz

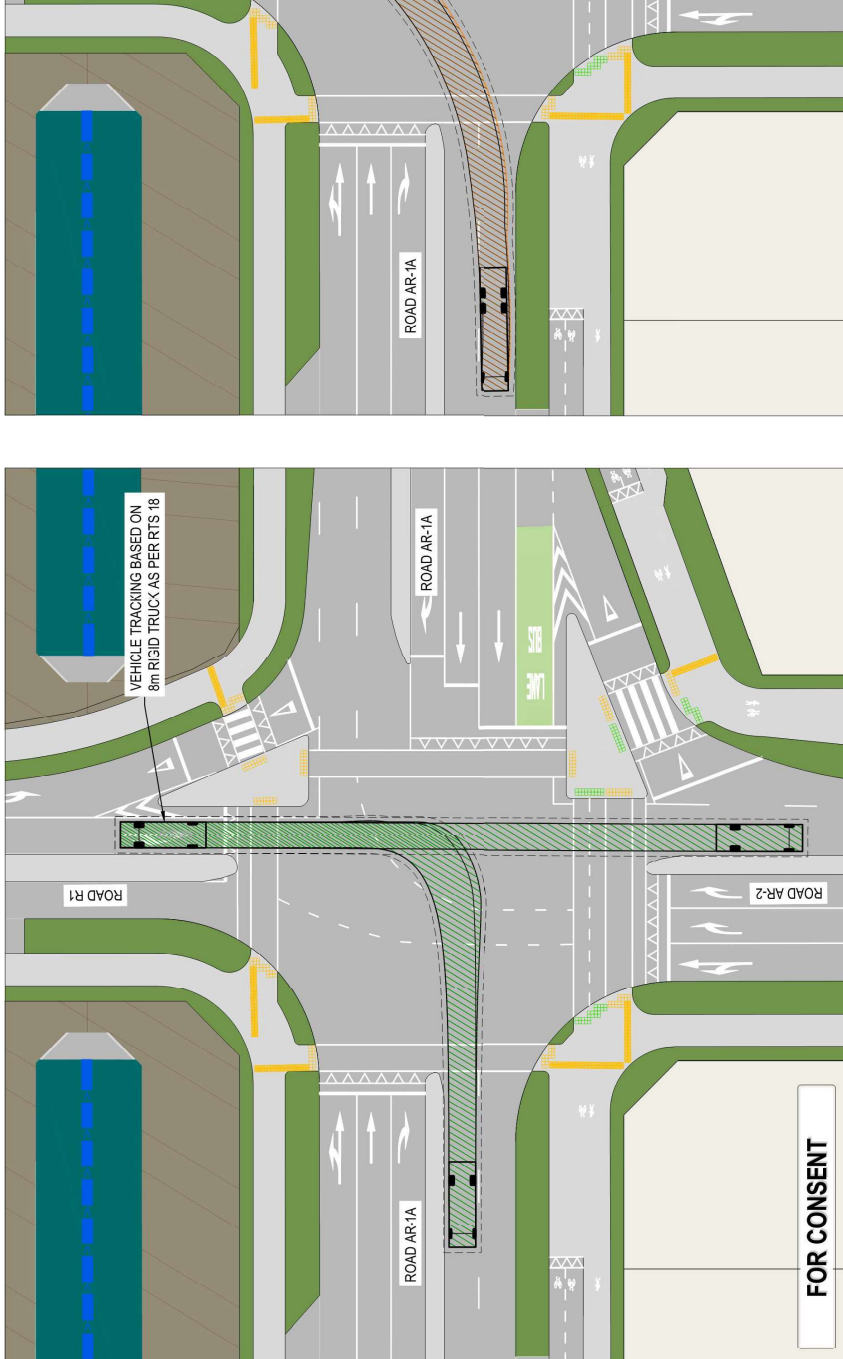
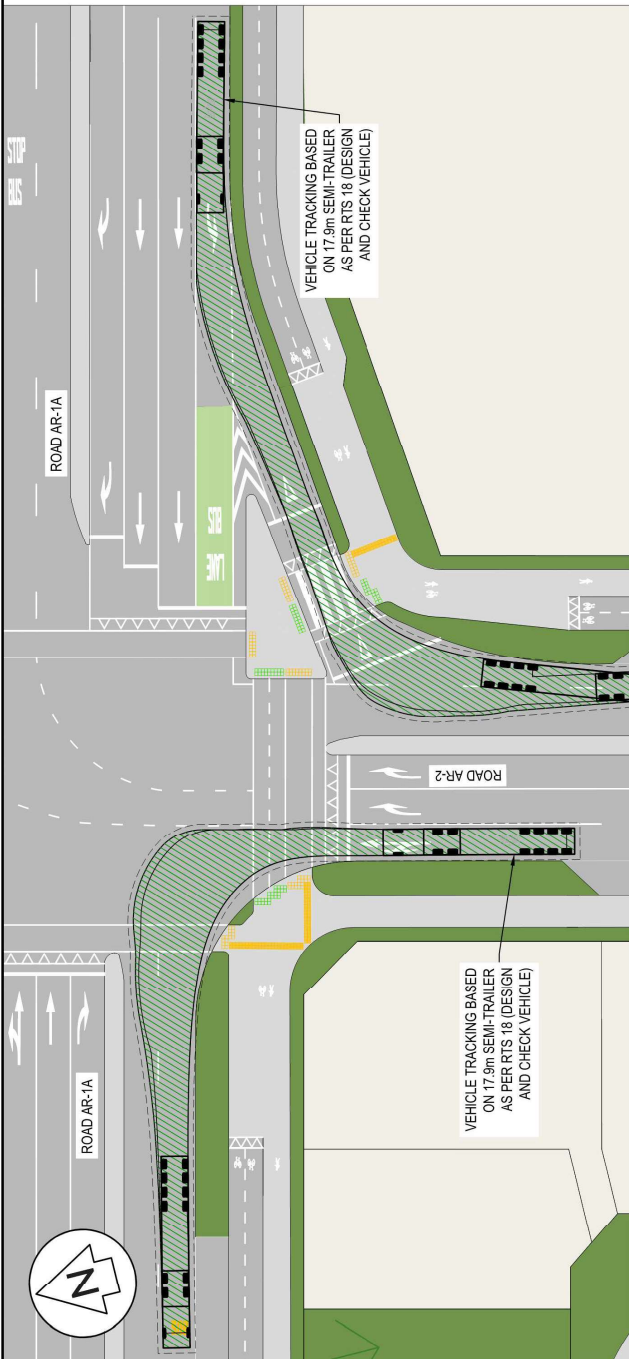
Project: **WAIRAKEI SOUTH FTA090 DEVELOPMENT**  
**BELL ROAD, PAPAMOA**  
**FOR BELL ROAD LIMITED PARTNERSHIP**

Title: **PROPOSED ROADING VEHICLE TRACKING TE OKUROA DR. INT.**

Project no.	BOP0749
Scale	1:500 @ A3
Cad file	BOP0749-C370.DWG
Drawing no.	C370-1-1
Rev	A







- NOTES
1. ALL WORKS TO BE IN ACCORDANCE WITH WESTERN BAY OF PLENTY DEVELOPMENT CODE.
  2. VEHICLE TRACKING BASED ON RTS 18 (NEW ZEALAND ON-ROAD TRACKING CURVES FOR HEAVY MOTOR VEHICLES).
  3. REFER TO C350 SERIES DRAWINGS FOR INTERSECTION DETAILS.



Rev	Description	By	Date
B	FOR CONSENT	DJ	03/26
A	DRAFT FOR REVIEW	DJ	10/26

By	Date
MAVEN	16/02/25
DJ	17/26
DJ	17/26
JK	18/26

**M** **MAVEN** Bay of Plenty  
 Auckland  
 116 Cammer Street, Tauranga  
 www.maven.co.nz  
 New Zealand

Project: **WAIRAKEI SOUTH FTA090 DEVELOPMENT**  
**BELL ROAD, PAPAMOA**  
**FOR BELL ROAD LIMITED PARTNERSHIP**

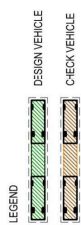
Title: **PROPOSED ROADING VEHICLE TRACKING INTERSECTION 3**

Project no.	BCP0749
Scale	1:500 @ A3
Card file	BOP0946-C270.DWG
Drawing no.	C370-3-2
Rev	B

**FOR CONSENT**



- NOTES
1. ALL WORKS TO BE IN ACCORDANCE WITH WESTERN BAY OF PLENTY DEVELOPMENT CODE.
  2. VEHICLE TRACKING BASED ON RTS 18 NEW ZEALAND ON-ROAD TRACKING CURVES FOR HEAVY MOTOR VEHICLES.
  3. REFER TO C350 SERIES DRAWINGS FOR INTERSECTION DETAILS.



Rev	Description	By	Date
B	FOR CONSENT	DJ	03/26
A	DRAFT FOR REVIEW	DJ	02/26

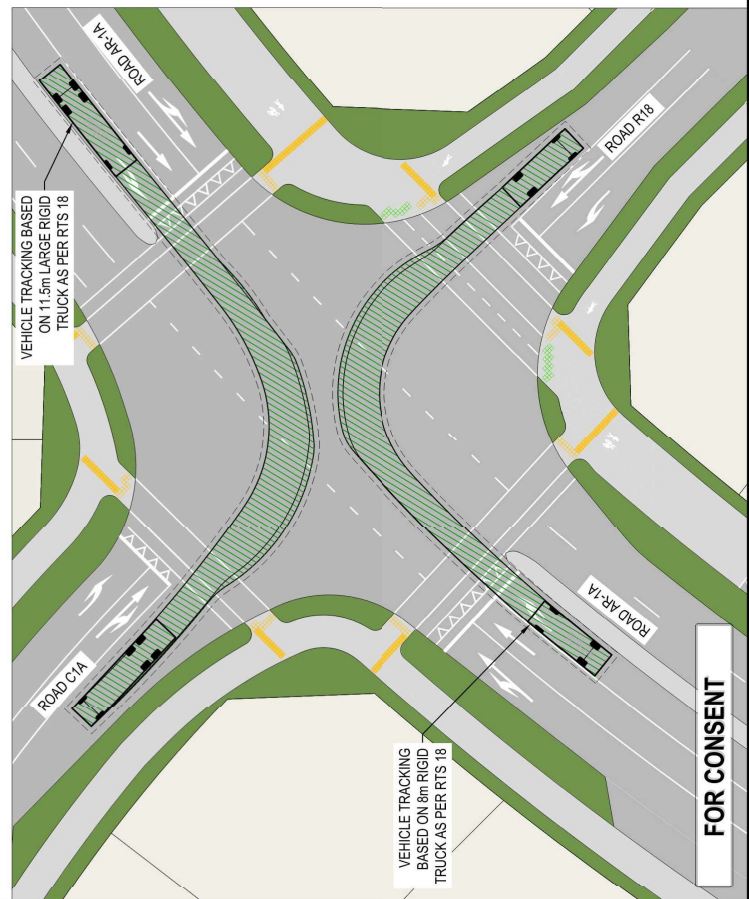
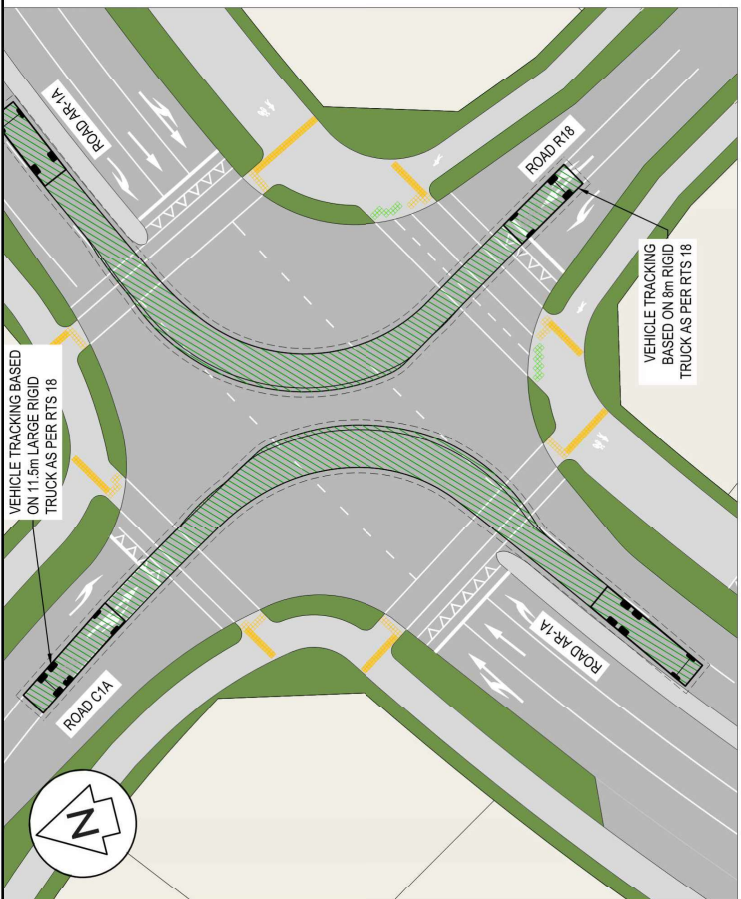
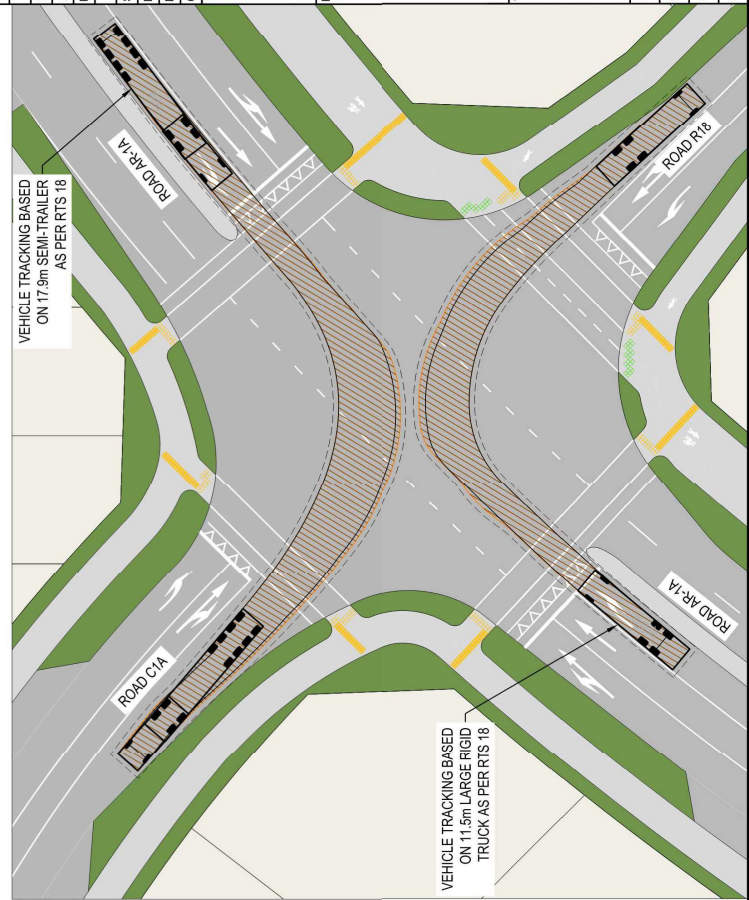
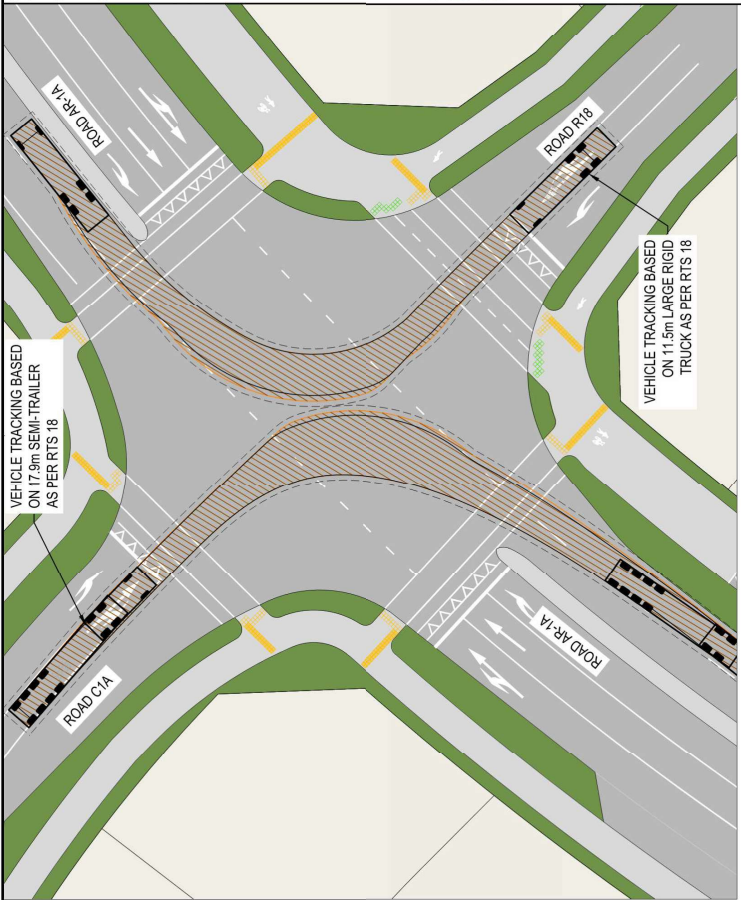
Survey	Design	Drawn	Checked
MAYEN	DJ	DJ	JMK
05/2025	01/26	01/26	03/26



Project  
**WAIRAKEI SOUTH FTA090 DEVELOPMENT**  
**BELL ROAD, PAPAMOA**  
**FOR BELL ROAD LIMITED PARTNERSHIP**

Title  
**PROPOSED ROADING VEHICLE TRACKING INTERSECTION 4**

Project no.	BOP0749
Scale	1:500 @ A3
Cad file	BOP0749-C370.DWG
Drawing no.	C370-4-1
Rev	B

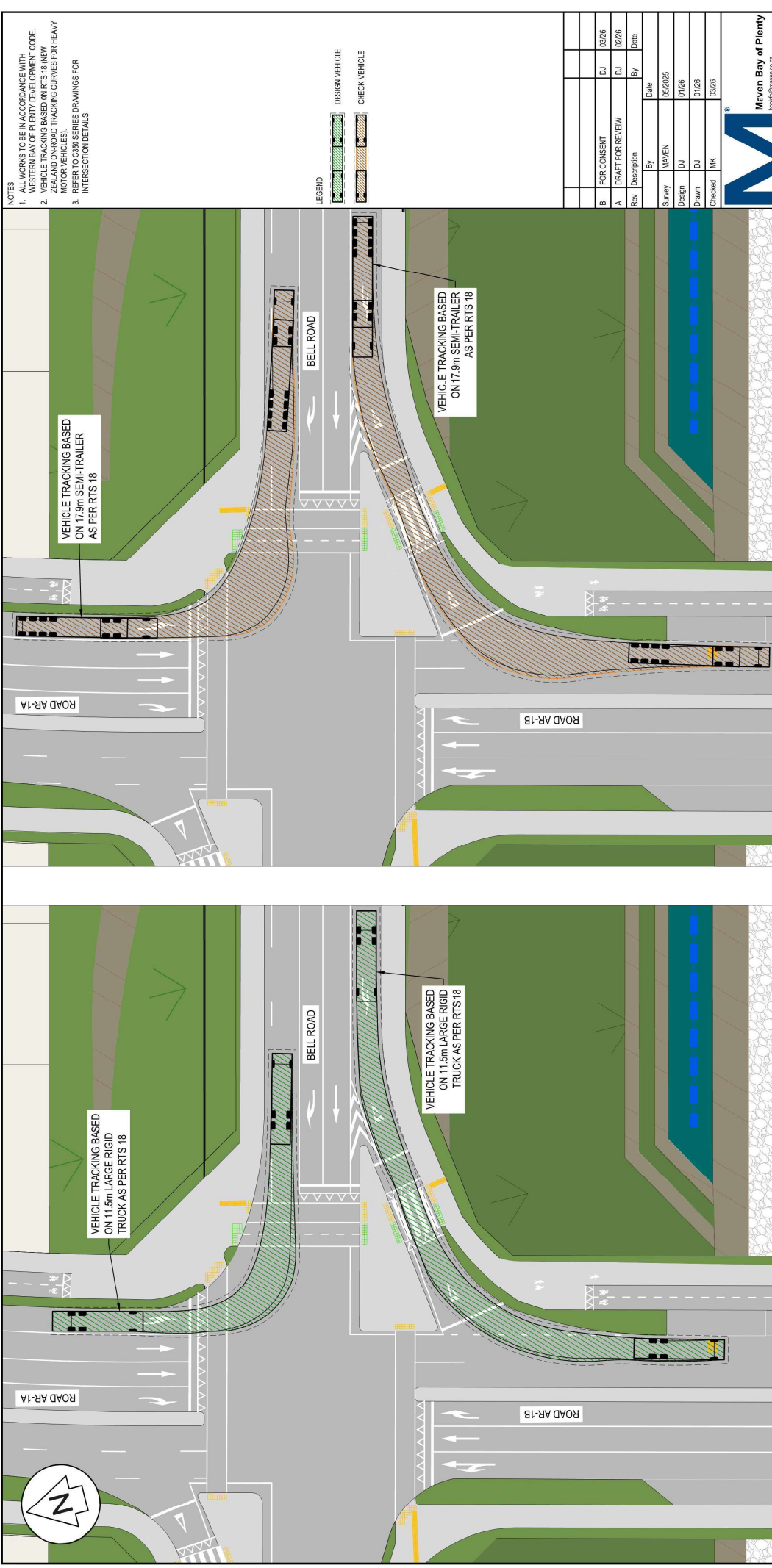












- NOTES
1. ALL WORKS TO BE IN ACCORDANCE WITH WESTERN BAY OF PLENTY DEVELOPMENT CODE.
  2. VEHICLE TRACKING BASED ON RTS 18 (NEW ZEALAND ON-ROAD TRACKING CURVES FOR HEAVY MOTOR VEHICLES).
  3. REFER TO C370 SERIES DRAWINGS FOR INTERSECTION DETAILS.

Rev	Description	By	Date
B	FOR CONSENT	DJ	03/26
A	DRAFT FOR REVIEW	DJ	02/26

Survey	MAVEN	05/2025
Design	DJ	01/26
Drawn	DJ	01/26
Checked	MK	03/26

**M** **Maven Bay of Plenty**  
 116 Cannon Street, Tauranga  
 maur@mbop.co.nz  
 www.maven.co.nz  
 New Zealand

Project  
**WAIRAKEI SOUTH FTA090 DEVELOPMENT**  
**BELL ROAD, PAPAMOA FOR BELL ROAD LIMITED PARTNERSHIP**

Title  
**PROPOSED ROADING VEHICLE TRACKING INTERSECTION 5**

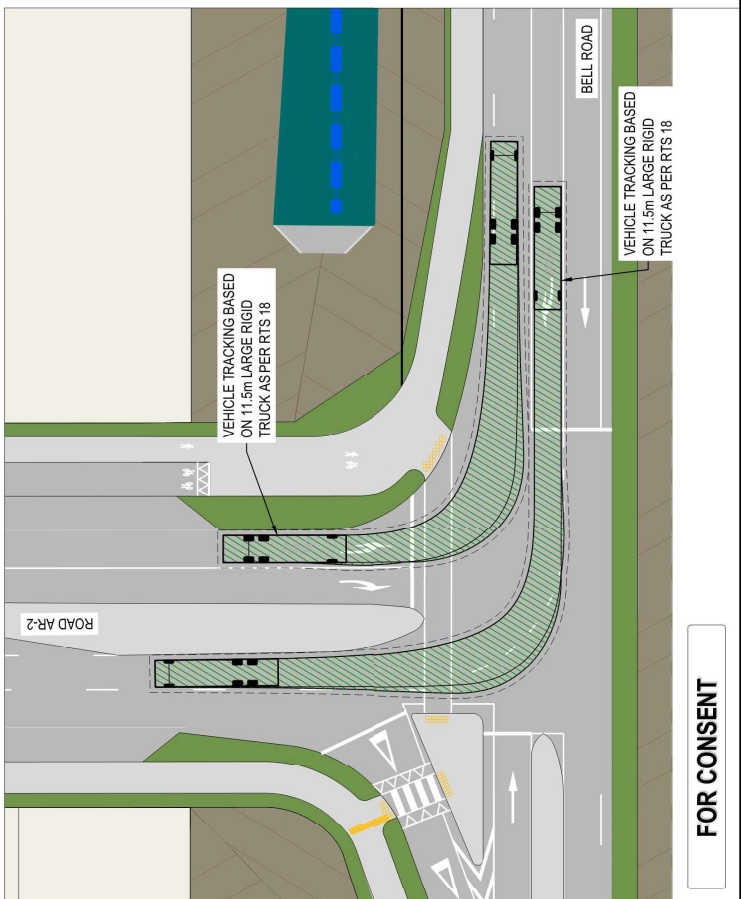
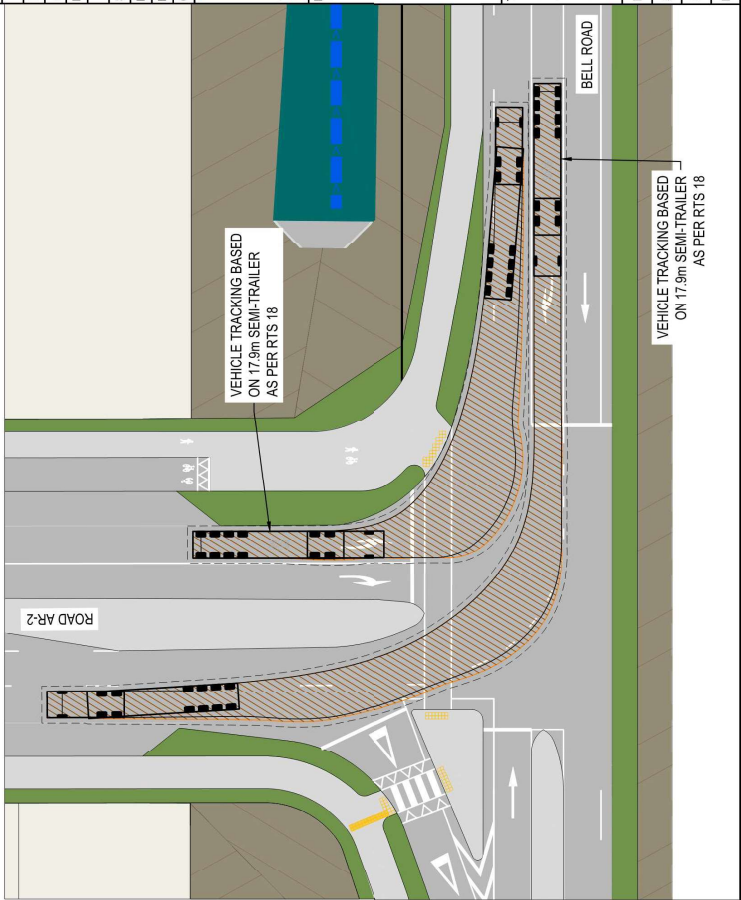
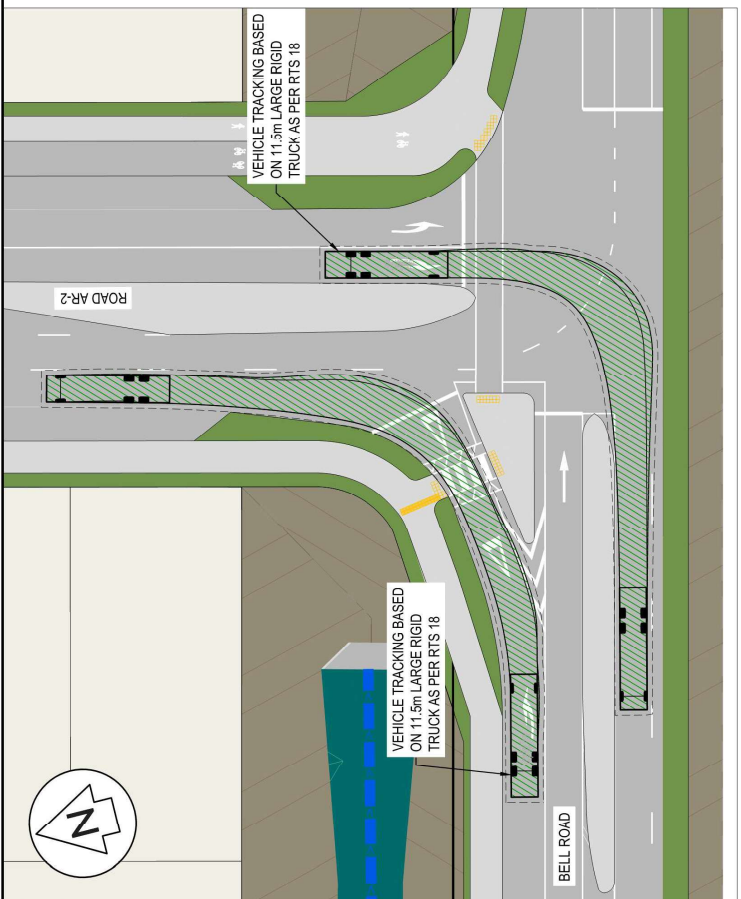
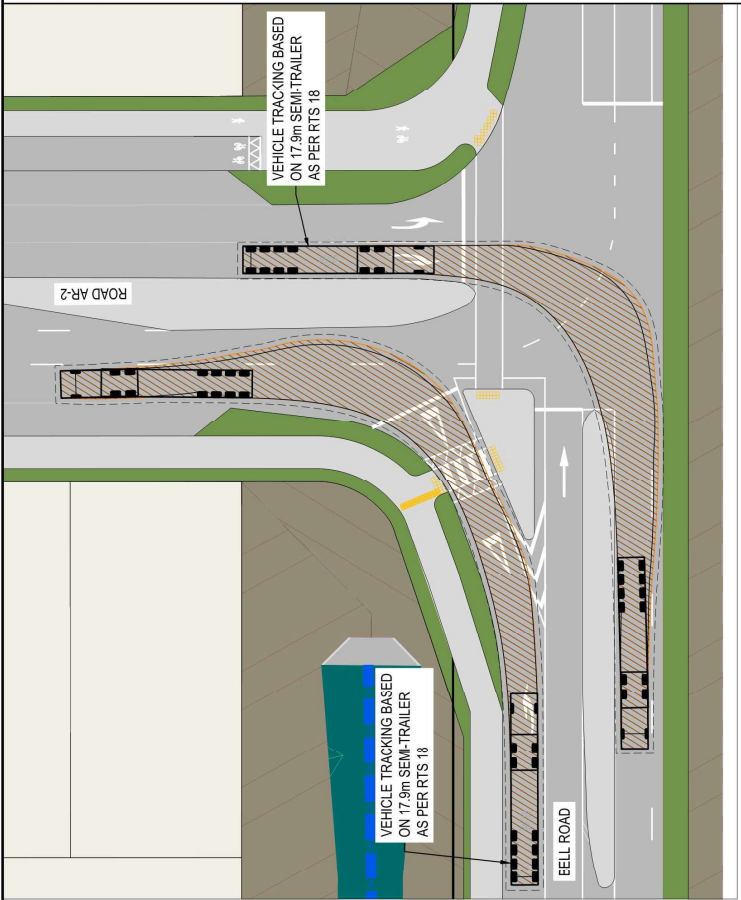
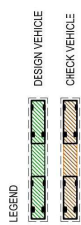
Project no.	BOP0749
Scale	1:500 @ A3
Cad file	BOP0749-C370.DWG
Drawing no.	C370-5-4
Rev	<b>B</b>

FOR CONSENT





- NOTES
1. ALL WORKS TO BE IN ACCORDANCE WITH WESTERN BAY OF PLENTY DEVELOPMENT CODE.
  2. VEHICLE TRACKING BASED ON RTS 18 NEW ZEALAND ON-ROAD TRACKING CURVES FOR HEAVY MOTOR VEHICLES.
  3. REFER TO C350 SERIES DRAWINGS FOR INTERSECTION DETAILS.



Rev	Description	By	Date
B	FOR CONSENT	DJ	03/26
A	DRAFT FOR REVIEW	DJ	02/26

By	Date
Survey	MAYEN
Design	DJ
Drawn	DJ
Checked	MK

**M** **AYEN**

Maiven Bay of Plenty  
 116 Cannon Street, Tauranga  
 www.maiven.co.nz  
 New Zealand

Project  
**WAIRAKEI SOUTH FTA090 DEVELOPMENT**  
**BELL ROAD, PAPAMOA FOR BELL ROAD LIMITED PARTNERSHIP**

Title  
**PROPOSED ROADING VEHICLE TRACKING INTERSECTION 8**

Project no.	BOP0749
Scale	1:500 @ A3
Cad file	BOP0749-C370.DWG
Drawing no.	C370-S-1
Rev	B

**FOR CONSENT**

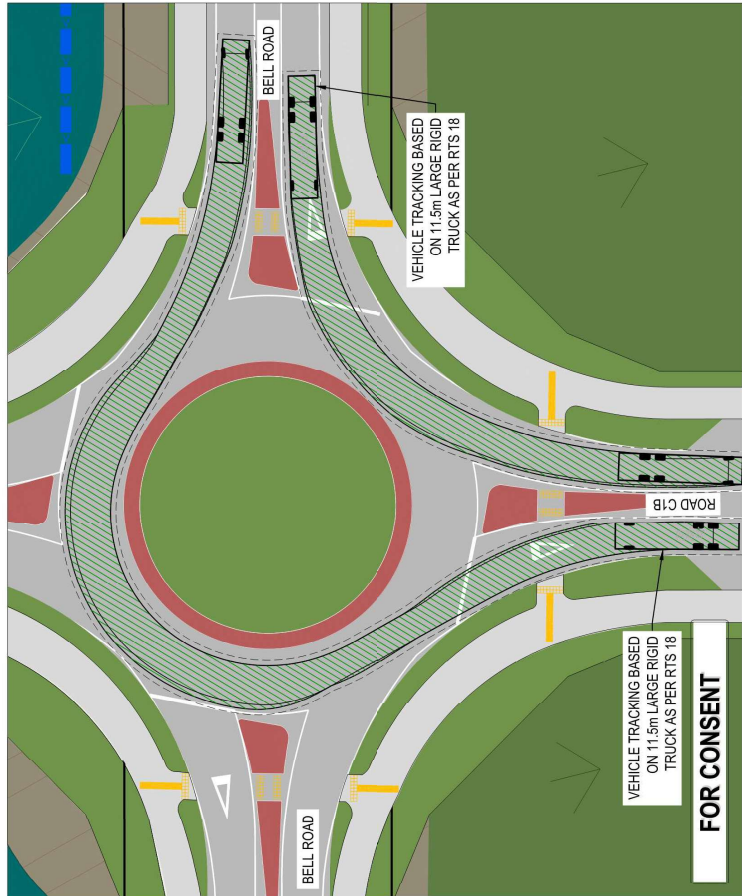
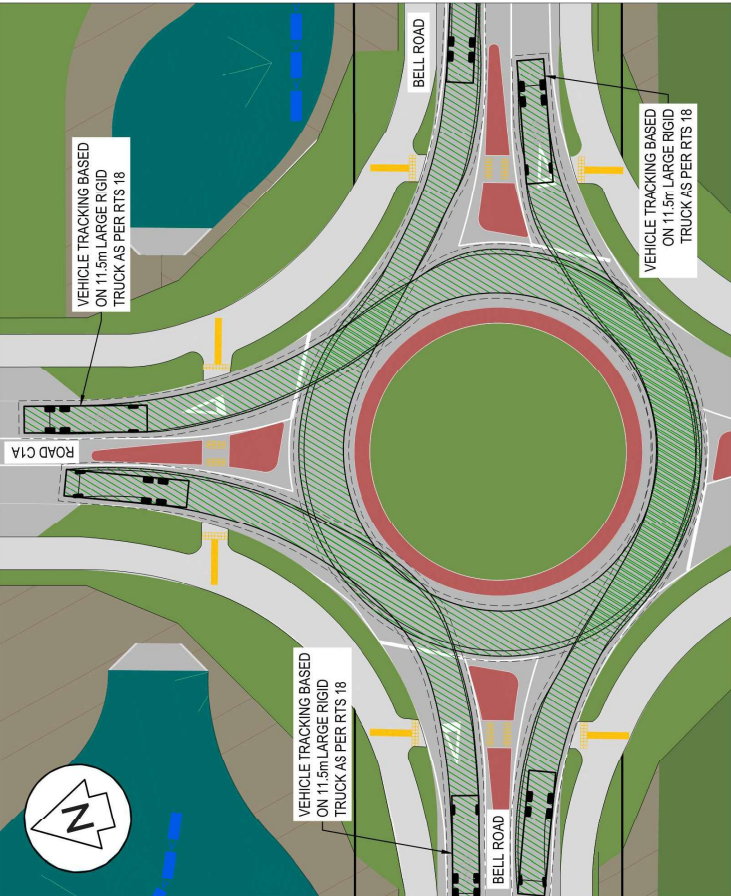
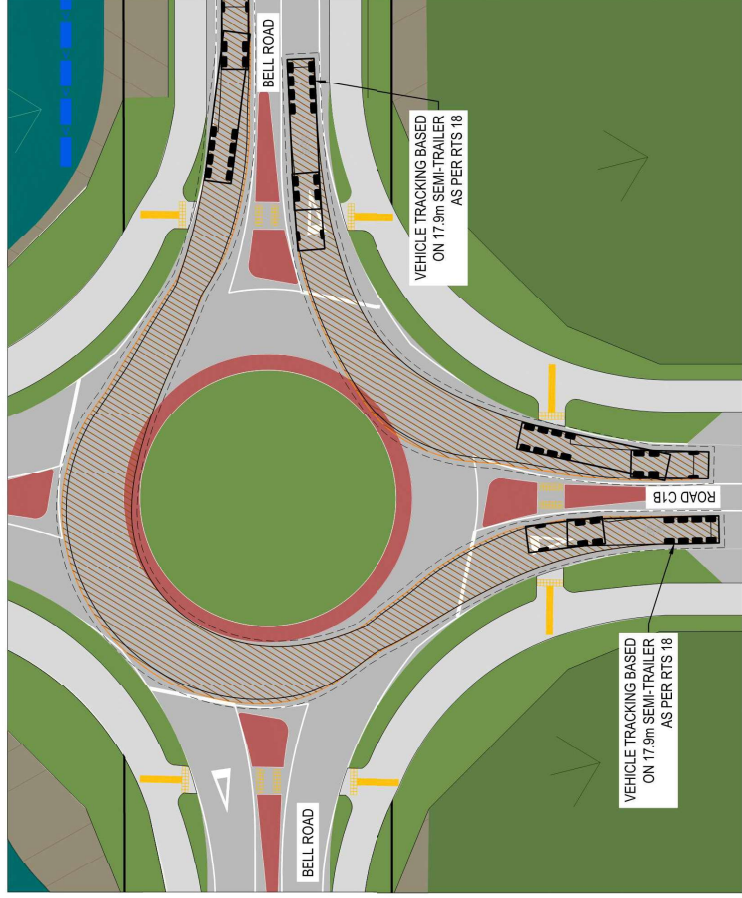
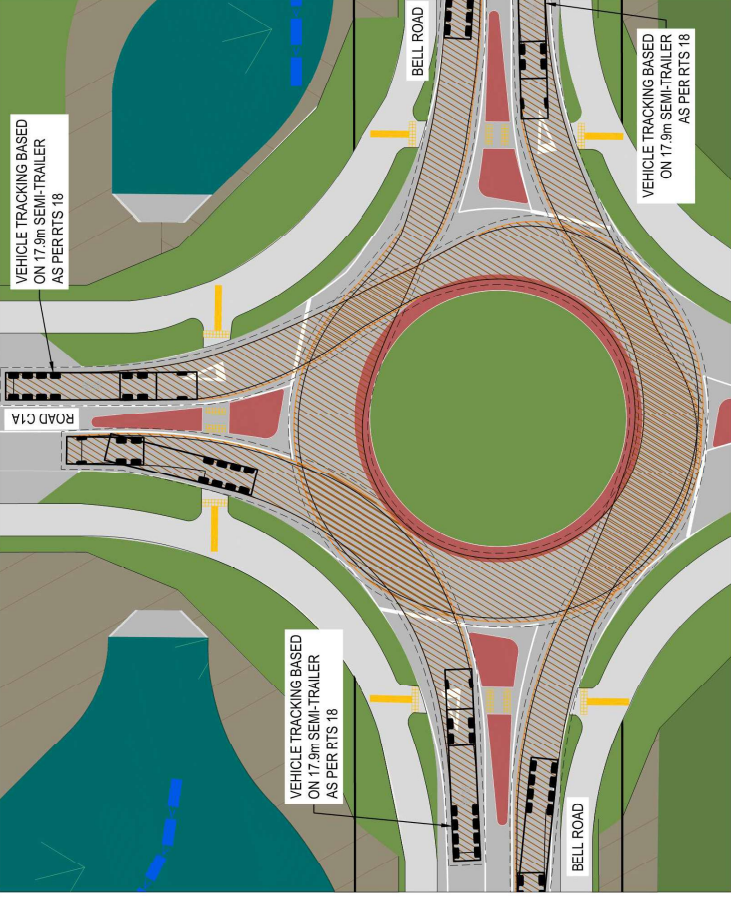








- NOTES
1. ALL WORKS TO BE IN ACCORDANCE WITH WESTERN BAY OF PLENTY DEVELOPMENT CODE.
  2. VEHICLE TRACKING BASED ON RTS 18 NEW ZEALAND ON-ROAD TRACKING CURVES FOR HEAVY MOTOR VEHICLES.
  3. REFER TO C370 SERIES DRAWINGS FOR INTERSECTION DETAILS.



Rev	Description	By	Date
B	FOR CONSENT	DJ	03/26
A	DRAFT FOR REVIEW	DJ	02/26

By	Date
Survey	HAIVEN
Design	DJ
Drawn	DJ
Checked	JHK

**M** **MAVEN Bay of Plenty**  
 116 Cannon Street, Tauranga  
 www.maven.co.nz  
 MAVEN  
 Project

**WAIRAKEI SOUTH FTA090 DEVELOPMENT**  
**BELL ROAD, PAPAMOA**  
**FOR BELL ROAD LIMITED PARTNERSHIP**

Title

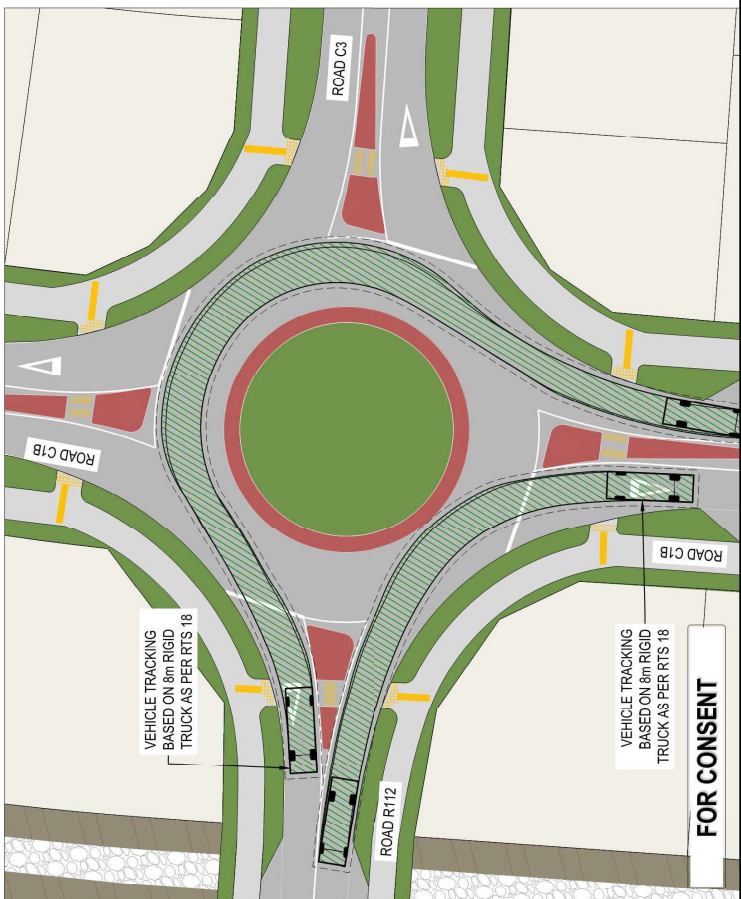
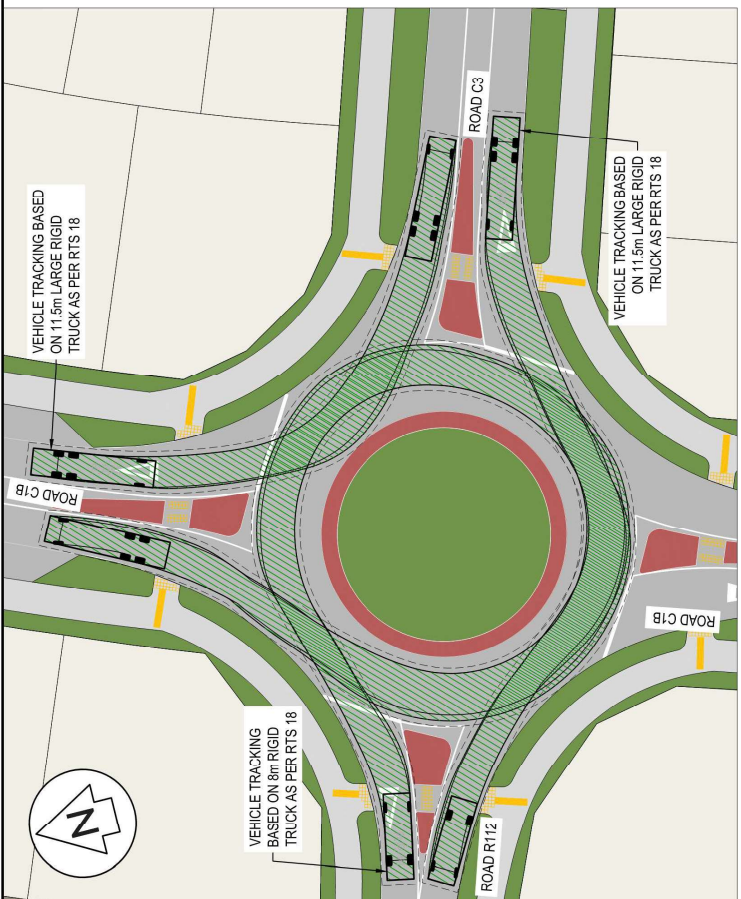
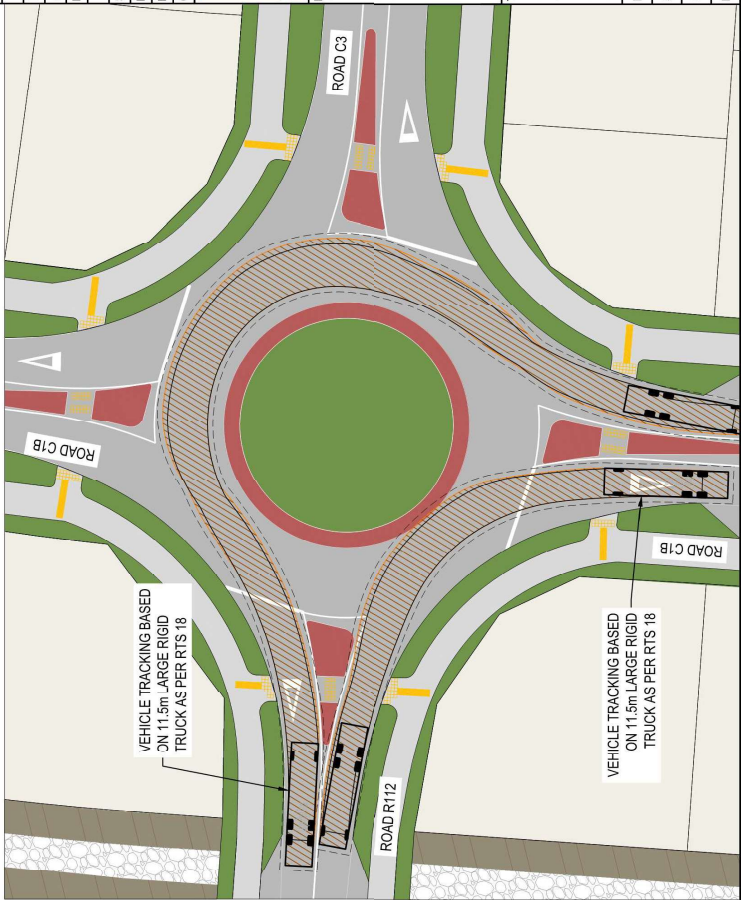
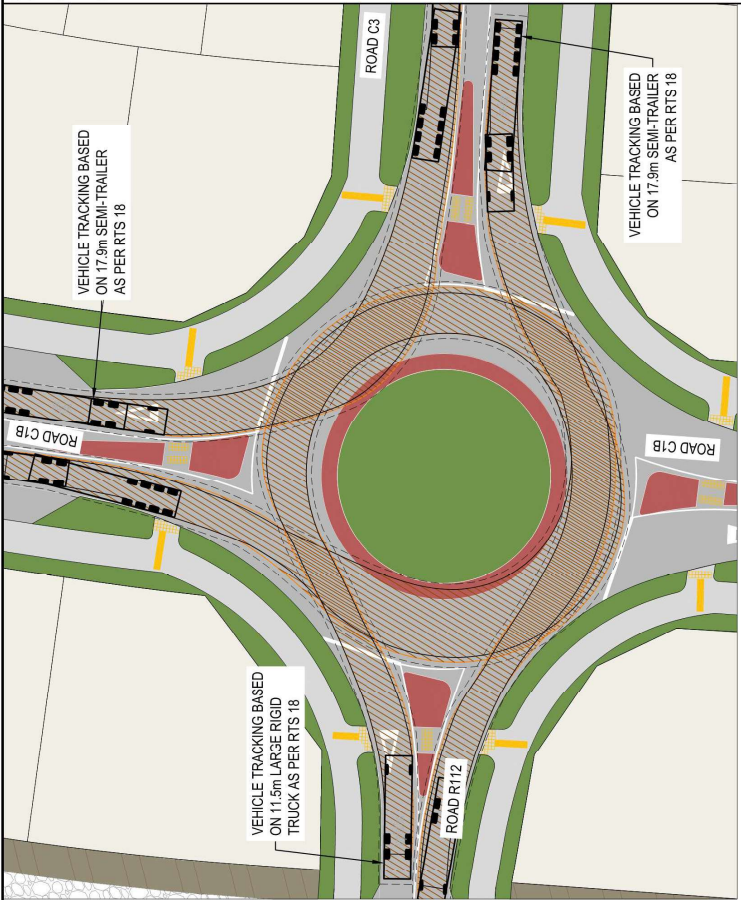
**PROPOSED ROADING VEHICLE TRACKING INTERSECTION 11**

Project no.	BOP0749
Scale	1:500 @ A3
Cad file	BOP0749-C370.DWG
Drawing no.	C370-11-1
Rev	B





- NOTES
1. ALL WORKS TO BE IN ACCORDANCE WITH WESTERN BAY OF PLENTY DEVELOPMENT CODE.
  2. VEHICLE TRACKING BASED ON RTS 18 NEW ZEALAND ON-ROAD TRACKING CURVES FOR HEAVY MOTOR VEHICLES.
  3. REFER TO C350 SERIES DRAWINGS FOR INTERSECTION DETAILS.



Rev	Description	By	Date
B	FOR CONSENT	DJ	03/26
A	DRAFT FOR REVIEW	DJ	02/26

Survey	By	Date
HAIVEN	HAIVEN	05/2025
Design	By	Date
DJ	DJ	01/26
Drawn	By	Date
DJ	DJ	01/26
Checked	By	Date
HK	HK	03/26



Project  
**WAIRAKEI SOUTH FTA090 DEVELOPMENT**  
**BELL ROAD, PAPAMOA**  
**FOR BELL ROAD LIMITED PARTNERSHIP**

Title  
**PROPOSED ROADING VEHICLE TRACKING INTERSECTION 12**

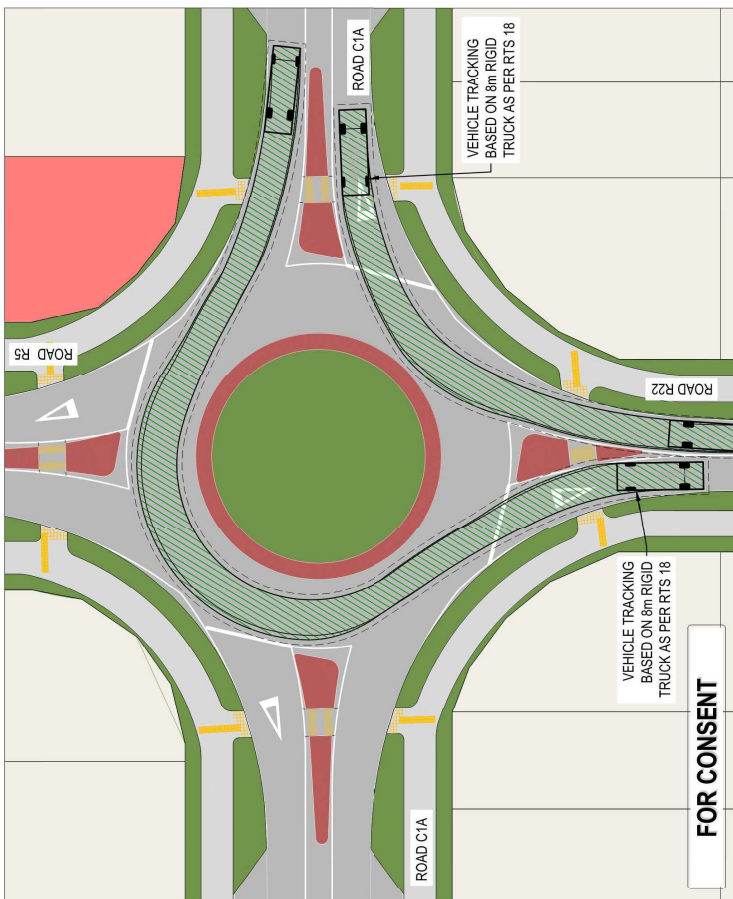
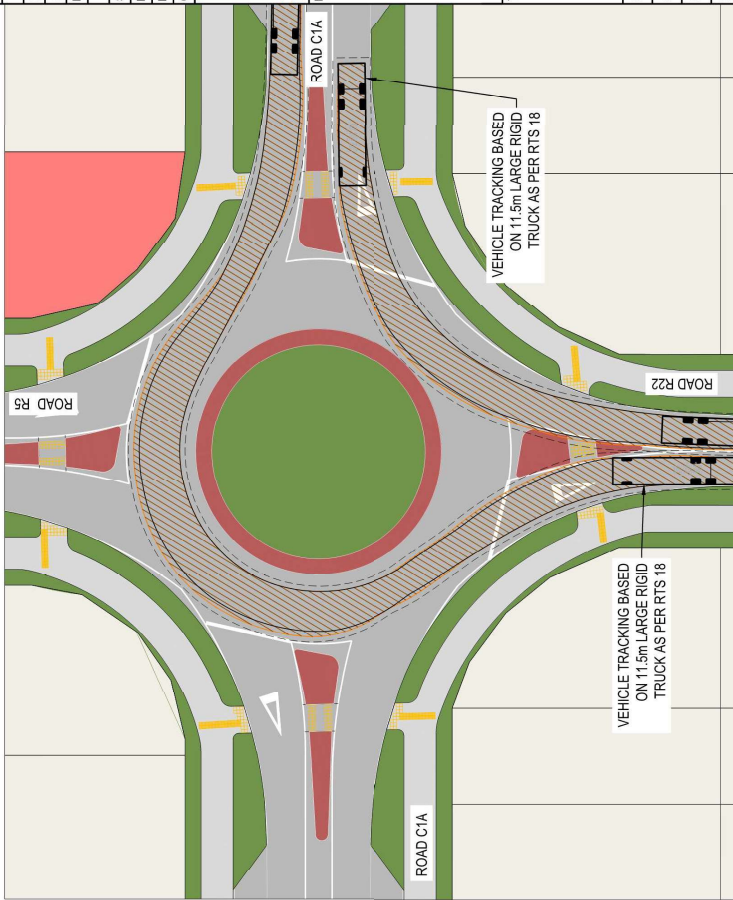
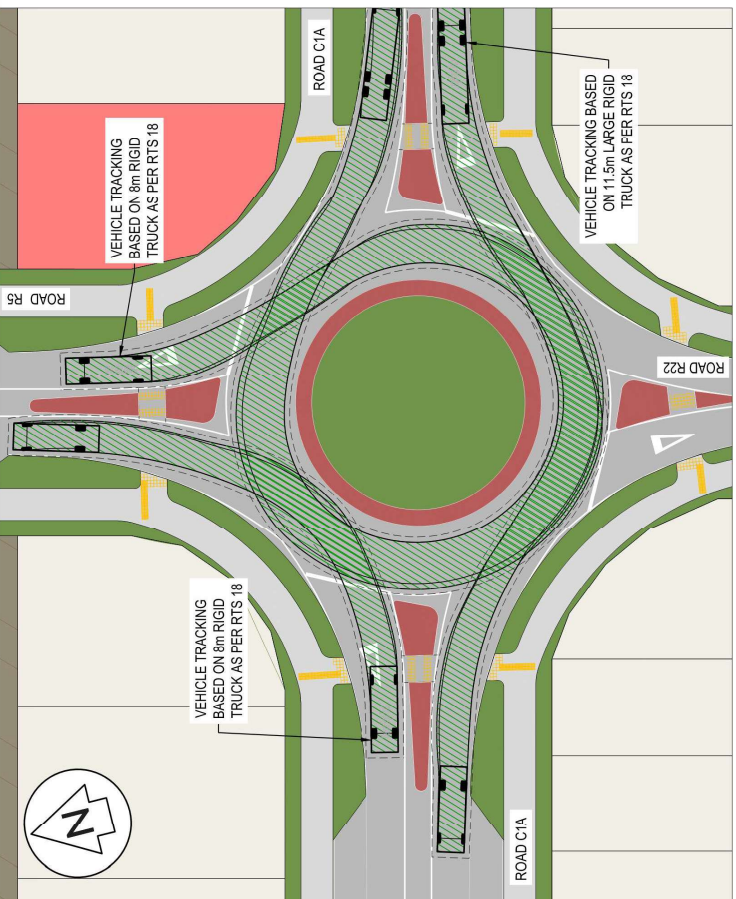
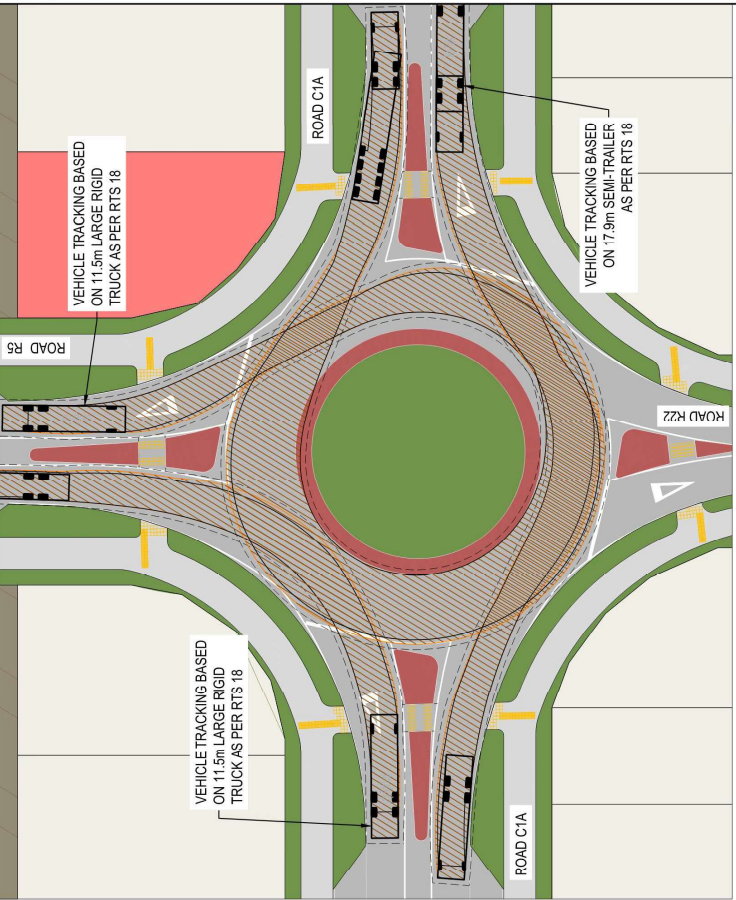
Project no.	BOP0749
Scale	1:500 @ A3
Cad file	BOP0749-C370.DWG
Drawing no.	C370-12-2
Rev	B







- NOTES
1. ALL WORKS TO BE IN ACCORDANCE WITH WESTERN BAY OF PLENTY DEVELOPMENT CODE.
  2. VEHICLE TRACKING BASED ON RTS 18 NEW ZEALAND ON-ROAD TRACKING CURVES FOR HEAVY MOTOR VEHICLES.
  3. REFER TO C350 SERIES DRAWINGS FOR INTERSECTION DETAILS.



Rev	Description	By	Date
B	FOR CONSENT	DJ	03/26
A	DRAFT FOR REVIEW	DJ	10/26

Survey	MAVEN	16/02/25
Design	DJ	01/26
Drawn	DJ	01/26
Checked	JK	10/26

**M** **MAVEN** Bay of Plenty  
 116 Cameron Street, Tauranga  
 www.maven.co.nz  
 New Zealand

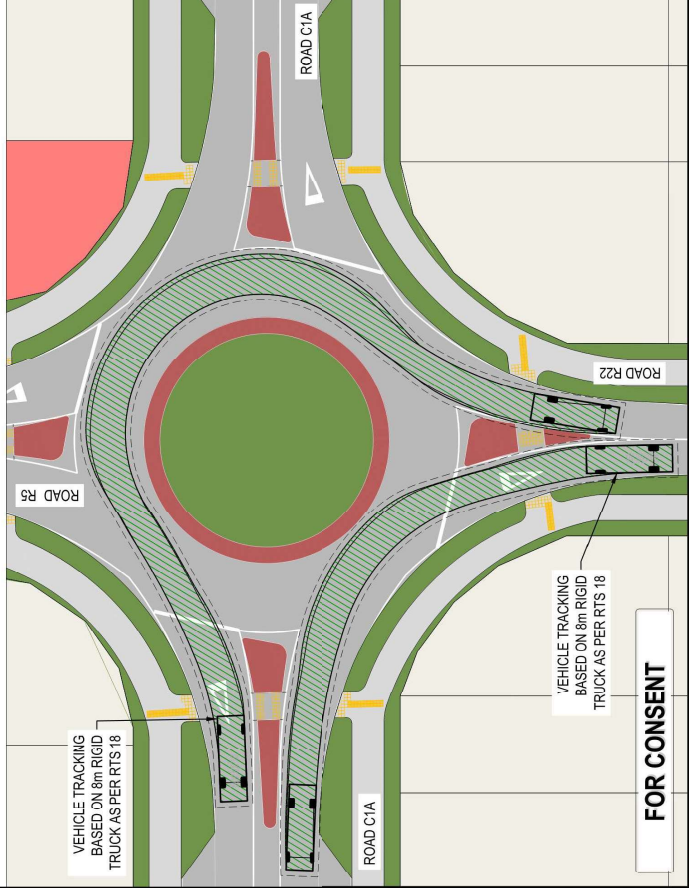
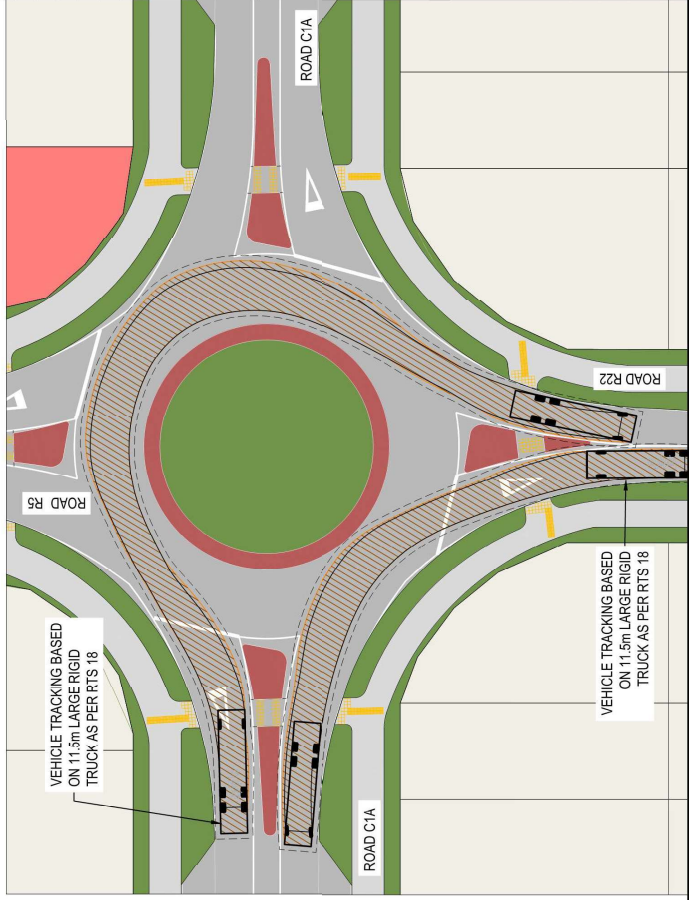
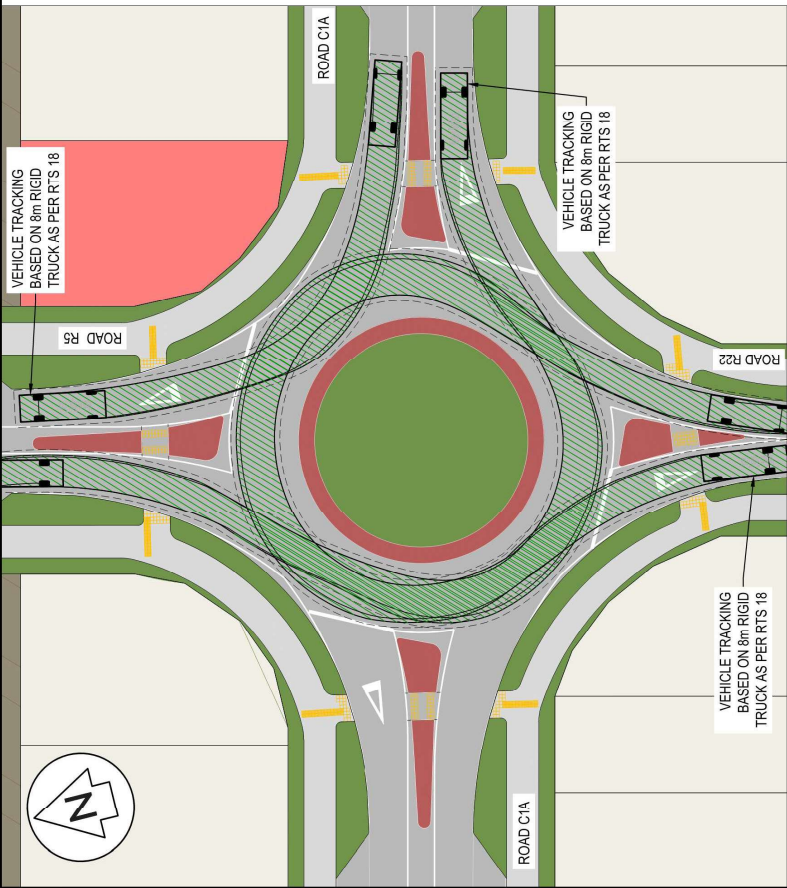
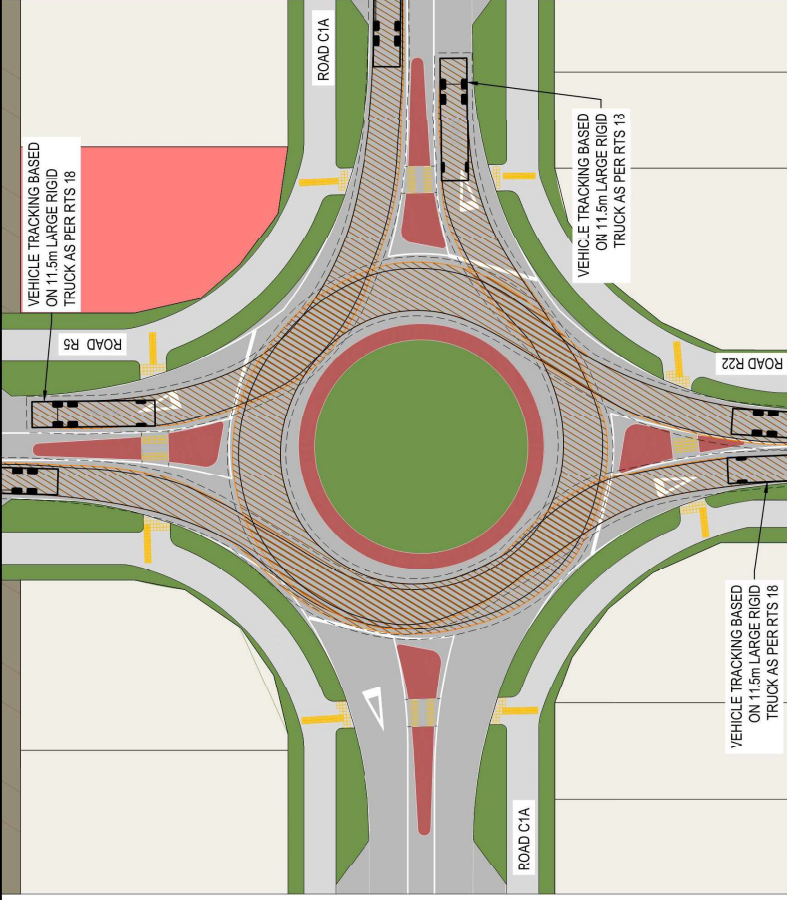
Project: **WAIKAKEI SOUTH FTA090 DEVELOPMENT**  
**BELL ROAD, PAPAMOA**  
**FOR BELL ROAD LIMITED PARTNERSHIP**

Title: **PROPOSED ROADING VEHICLE TRACKING INTERSECTION 14**

Project no.	BCP0749
Scale	1:500 @ A3
Cad file	B070749-C270.DWG
Drawing no.	C370-14-1
Rev	B

**FOR CONSENT**

- NOTES**
1. ALL WORKS TO BE IN ACCORDANCE WITH WESTERN BAY OF PLENTY DEVELOPMENT CODE.
  2. VEHICLE TRACKING BASED ON RTS 18 NEW ZEALAND ON-ROAD TRACKING CURVES FOR HEAVY MOTOR VEHICLES.
  3. REFER TO C350 SERIES DRAWINGS FOR INTERSECTION DETAILS.



Rev	Description	By	Date
B	FOR CONSENT	DJ	03/26
A	DRAW FOR REVIEW	DJ	02/26
Survey	NAVEN		05/2025
Design	DJ		01/26
Drawn	DJ		01/26
Checked	HK		03/26

**M** **MAVEN**

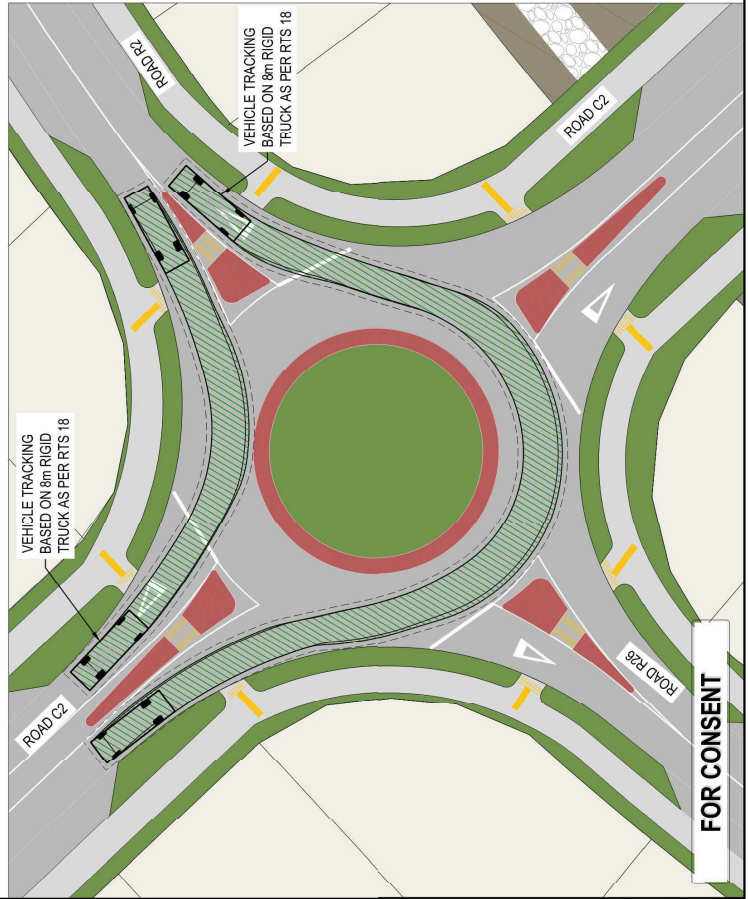
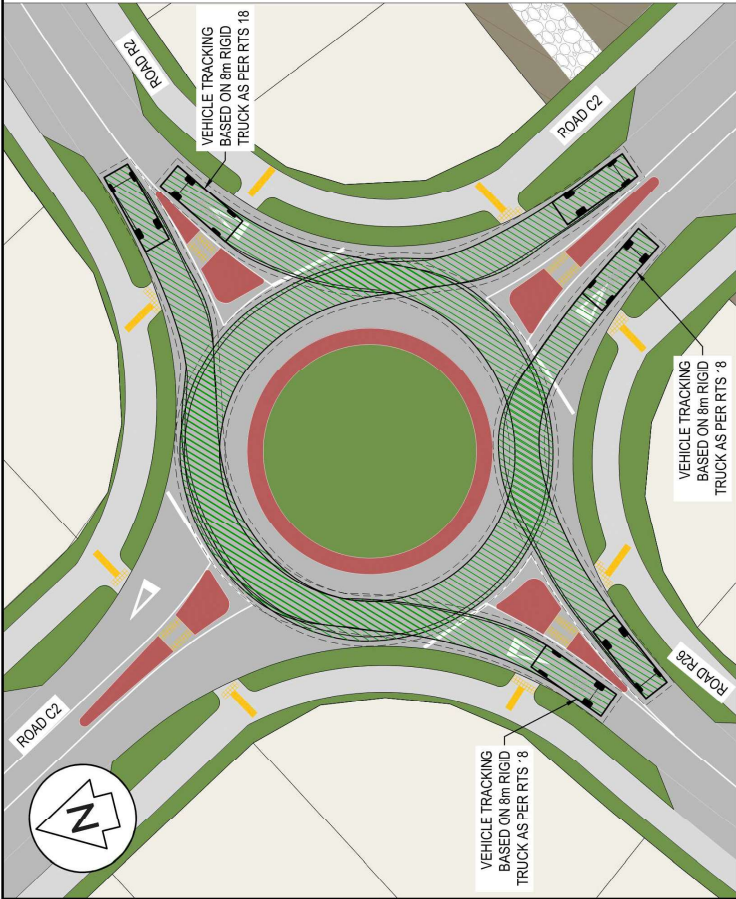
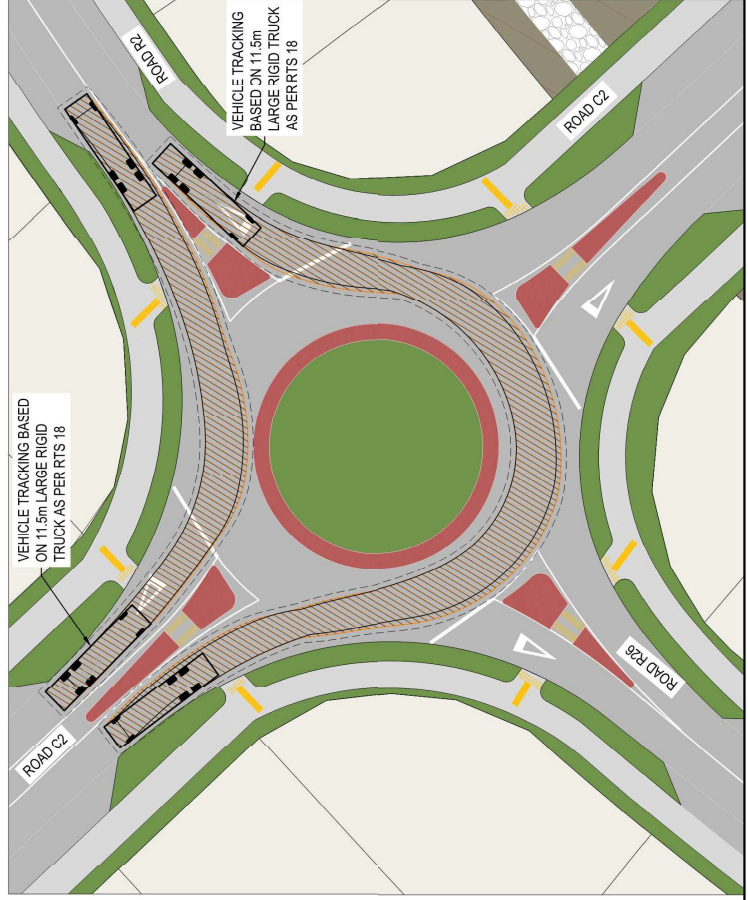
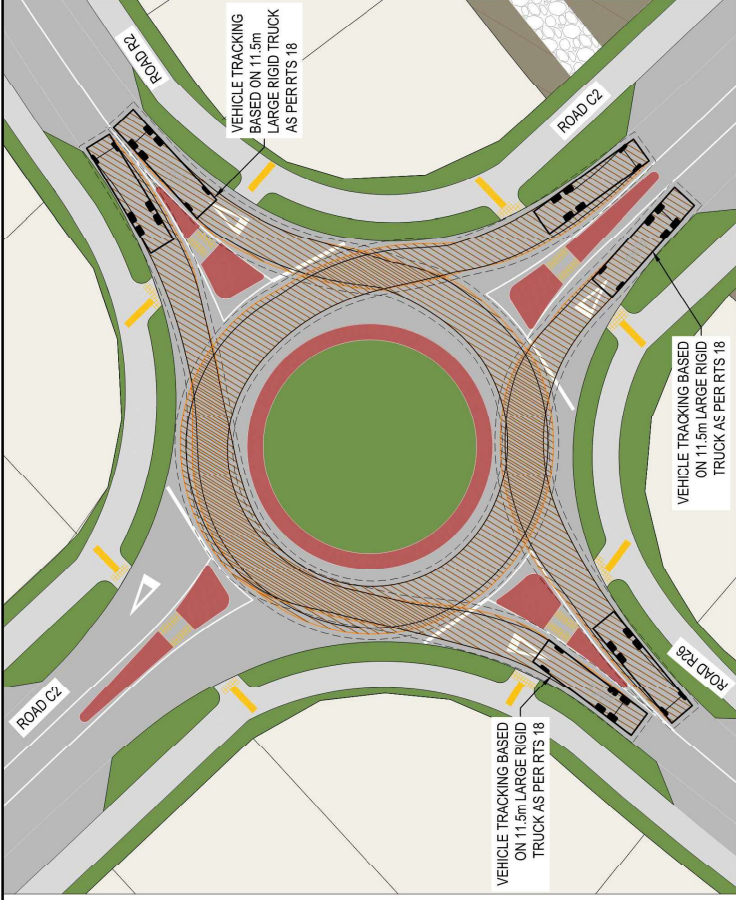
Maven Bay of Plenty  
 116 Cameron Street, Tauranga  
 www.maven.co.nz  
 New Zealand

**Project**  
**WAIRAKEI SOUTH FTA090 DEVELOPMENT**  
**BELL ROAD, PAPAMOA**  
**FOR BELL ROAD LIMITED PARTNERSHIP**

**Title**  
**PROPOSED ROADING VEHICLE TRACKING INTERSECTION 14**

Project no.	BOP0749
Scale	1:500 @ A3
Cad file	BOP0749-C370.DWG
Drawing no.	C370-14-2
Rev	B

- NOTES
1. ALL WORKS TO BE IN ACCORDANCE WITH WESTERN BAY OF PLENTY DEVELOPMENT CODE.
  2. VEHICLE TRACKING BASED ON RTS 18 (NEW ZEALAND ON-ROAD TRACKING CURVES FOR HEAVY MOTOR VEHICLES).
  3. REFER TO C390 SERIES DRAWINGS FOR INTERSECTION DETAILS.



FOR CONSENT

Rev	Description	By	Date
B	FOR CONSENT	DJ	03/26
A	DRAFT FOR REVIEW	DJ	02/26

Survey	By	Date
HAVEN		05/2025
Design	By	Date
DJ		01/26
Drawn	By	Date
DJ		01/26
Checked	By	Date
HK		03/26

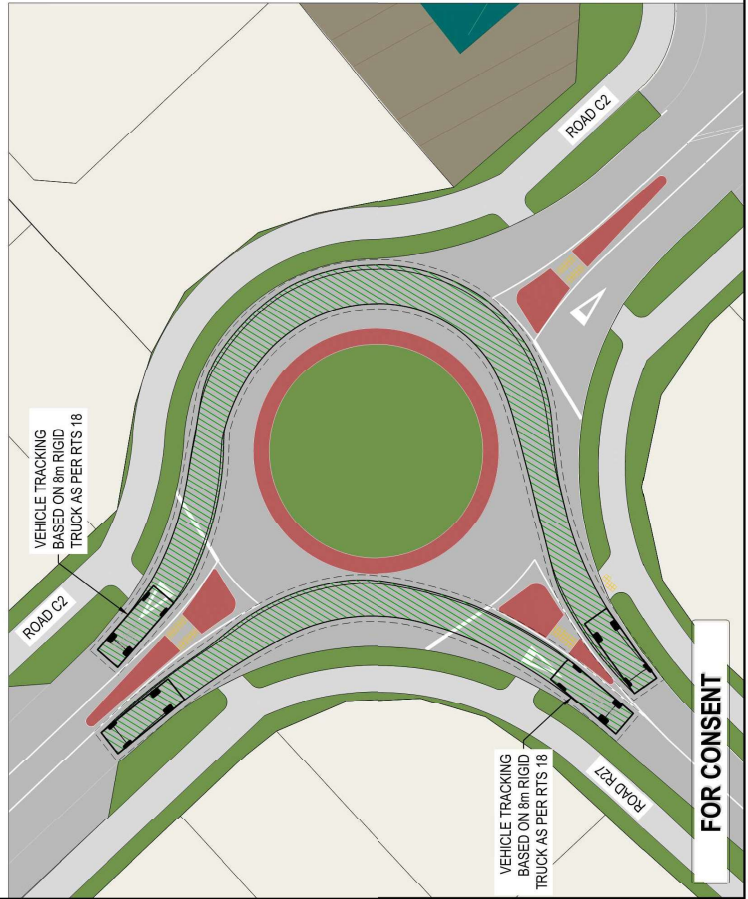
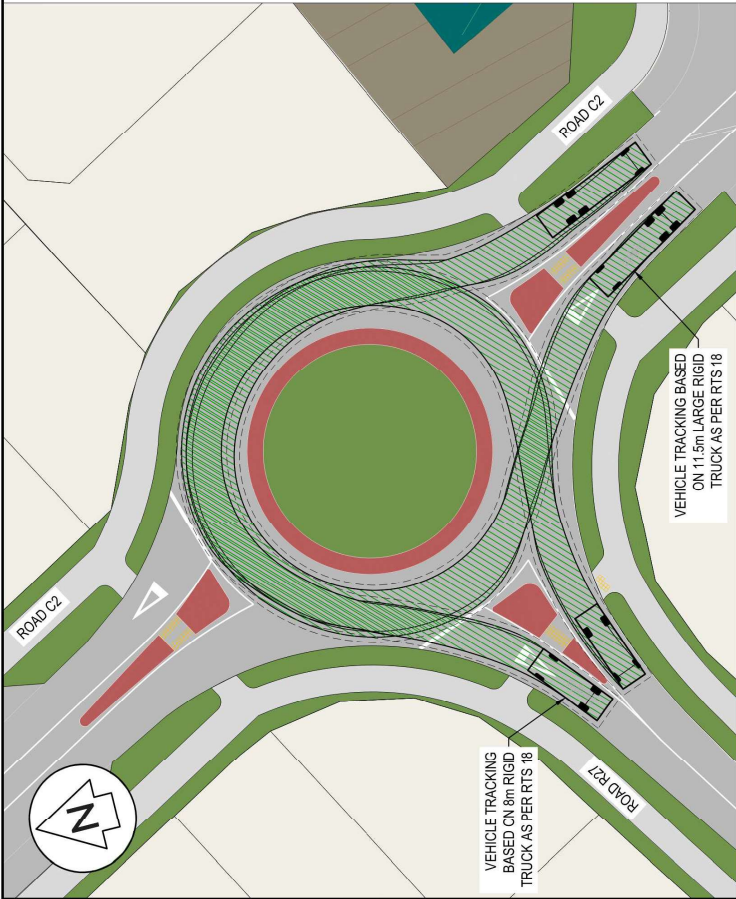
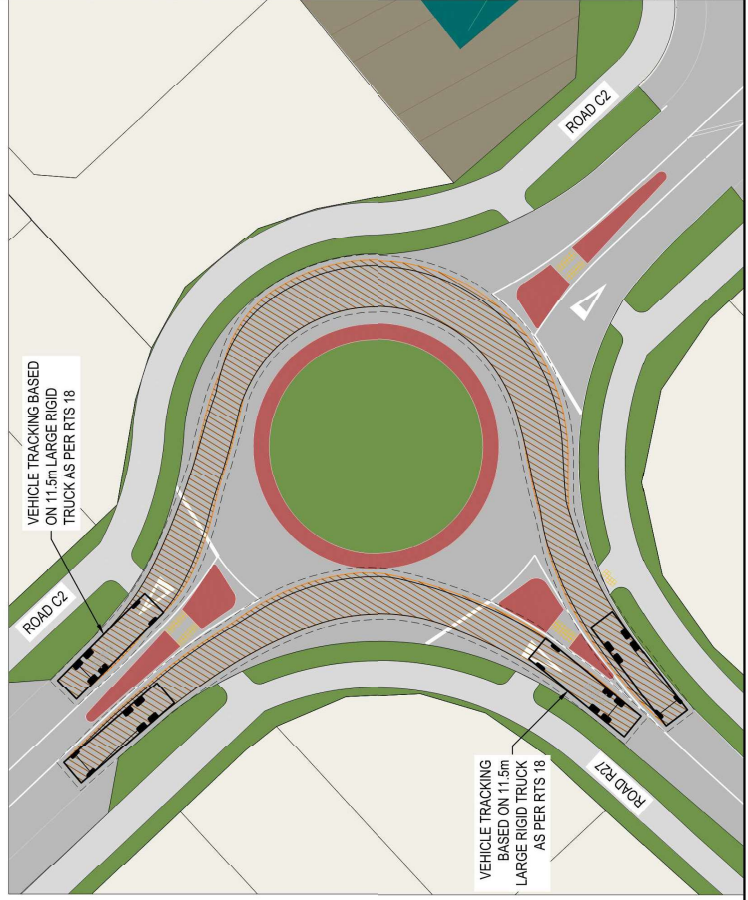
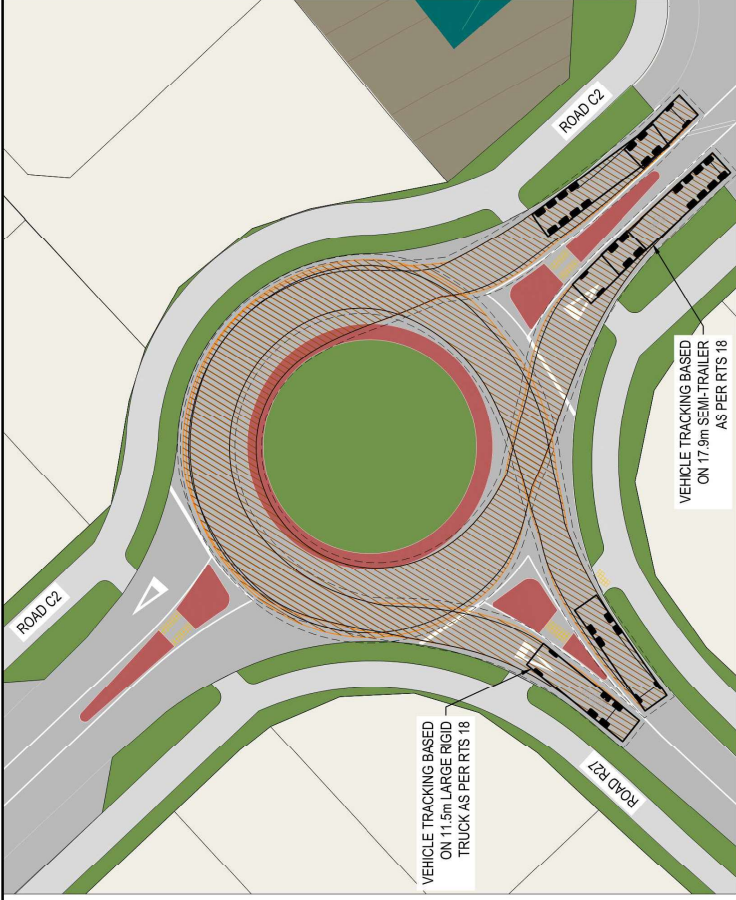
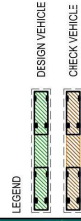
**Maven Bay of Plenty**  
 116 Cannon Street, Tauranga  
 www.maven.co.nz  
 MAVEN  
 New Zealand

Project  
**WAIRAKEI SOUTH FTA090**  
**DEVELOPMENT**  
**BELL ROAD, PAPAMOA**  
**FOR BELL ROAD**  
**LIMITED PARTNERSHIP**

Title	
<b>PROPOSED ROADING</b>	
<b>VEHICLE TRACKING</b>	
<b>INTERSECTION 15</b>	
Project no.	BOP0749
Scale	1:500 @ A3
Cad file	BOP0749-C370.DWG
Drawing no.	C370-15-1
Rev	B



- NOTES
1. ALL WORKS TO BE IN ACCORDANCE WITH WESTERN BAY OF PLENTY DEVELOPMENT CODE.
  2. VEHICLE TRACKING BASED ON RTS 18 (NEW ZEALAND ON-ROAD TRACKING CURVES FOR HEAVY MOTOR VEHICLES).
  3. REFER TO C390 SERIES DRAWINGS FOR INTERSECTION DETAILS.



Rev	Description	By	Date
B	FOR CONSENT	DJ	03/26
A	DRAFT FOR REVIEW	DJ	10/26

Survey	By	Date
HAIVEN		05/2025
Design	By	Date
DJ		01/26
Drawn	By	Date
DJ		01/26
Checked	By	Date
JK		03/26

Maven Bay of Plenty  
 116 Cannon Street, Tauranga  
 www.maven.co.nz  
 New Zealand

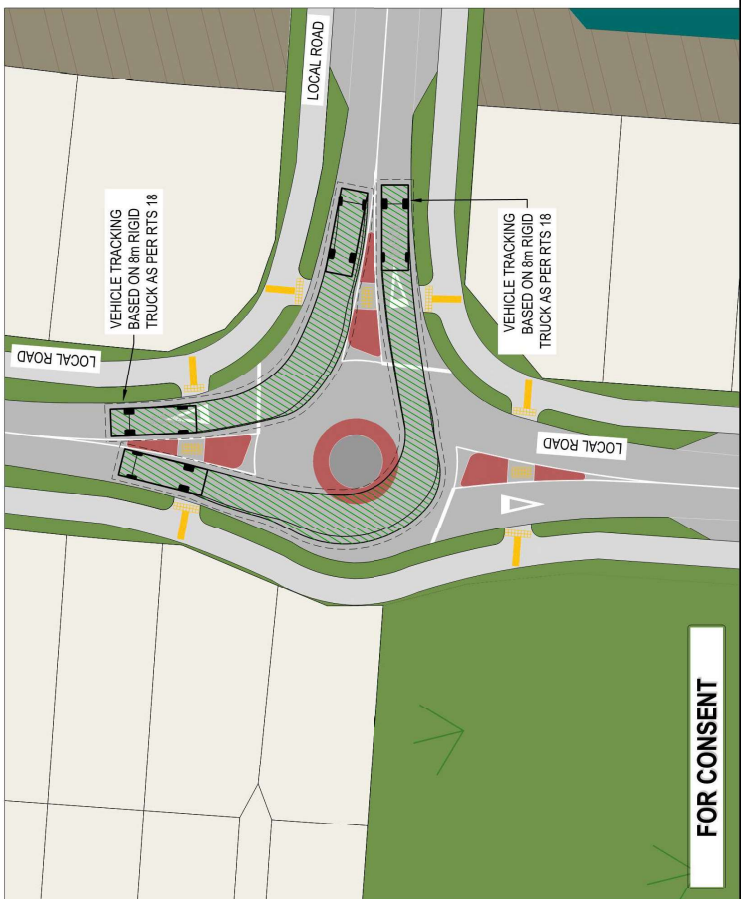
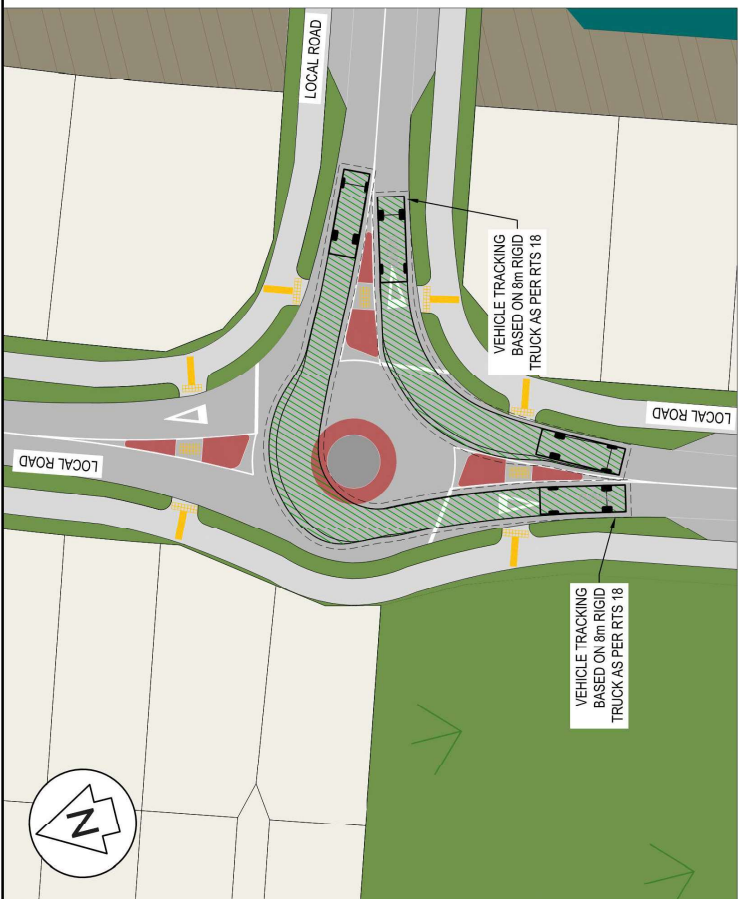
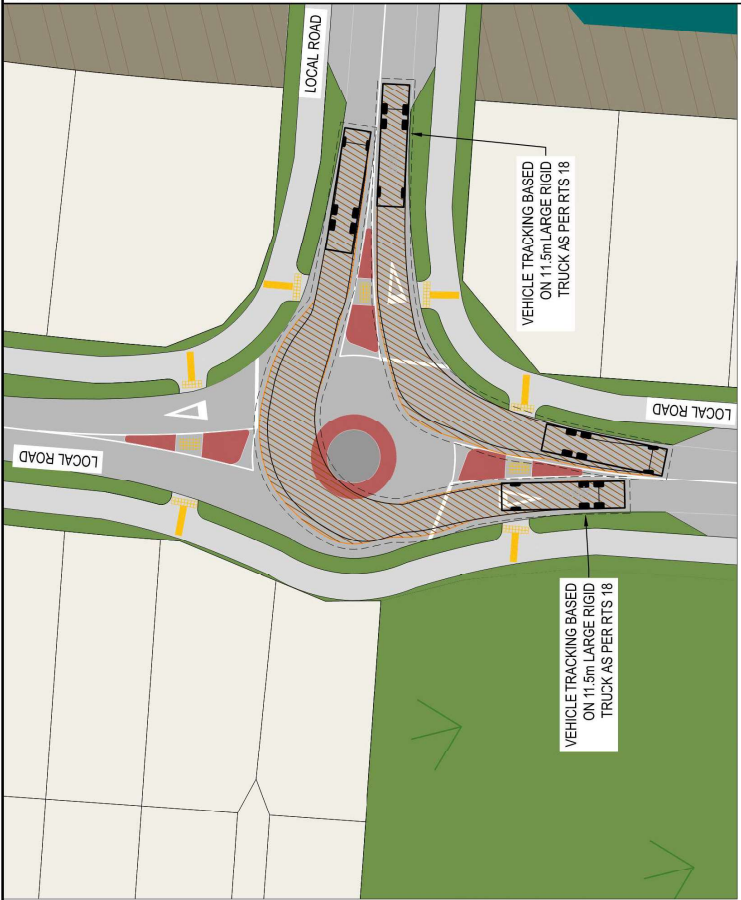
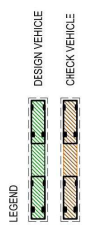
Project  
**WAIRAKEI SOUTH FTA090 DEVELOPMENT**  
**BELL ROAD, PAPAMOA**  
**FOR BELL ROAD LIMITED PARTNERSHIP**

Title  
**PROPOSED ROADING VEHICLE TRACKING INTERSECTION 16**

Project no.	BOP0749
Scale	1:500 @ A3
Cad file	BOP0749-C370.DWG
Drawing no.	C370-16-1
Rev	B



- NOTES
1. ALL WORKS TO BE IN ACCORDANCE WITH WESTERN BAY OF PLENTY DEVELOPMENT CODE.
  2. VEHICLE TRACKING BASED ON RTS 18 NEW ZEALAND ON-ROAD TRACKING CURVES FOR HEAVY MOTOR VEHICLES.
  3. REFER TO C350 SERIES DRAWINGS FOR INTERSECTION DETAILS.



**FOR CONSENT**

Rev	Description	By	Date
B	FOR CONSENT	DJ	03/26
A	DRAFT FOR REVIEW	DJ	02/26

By	Date
Survey	MAYEN
Design	DJ
Drawn	DJ
Checked	MK

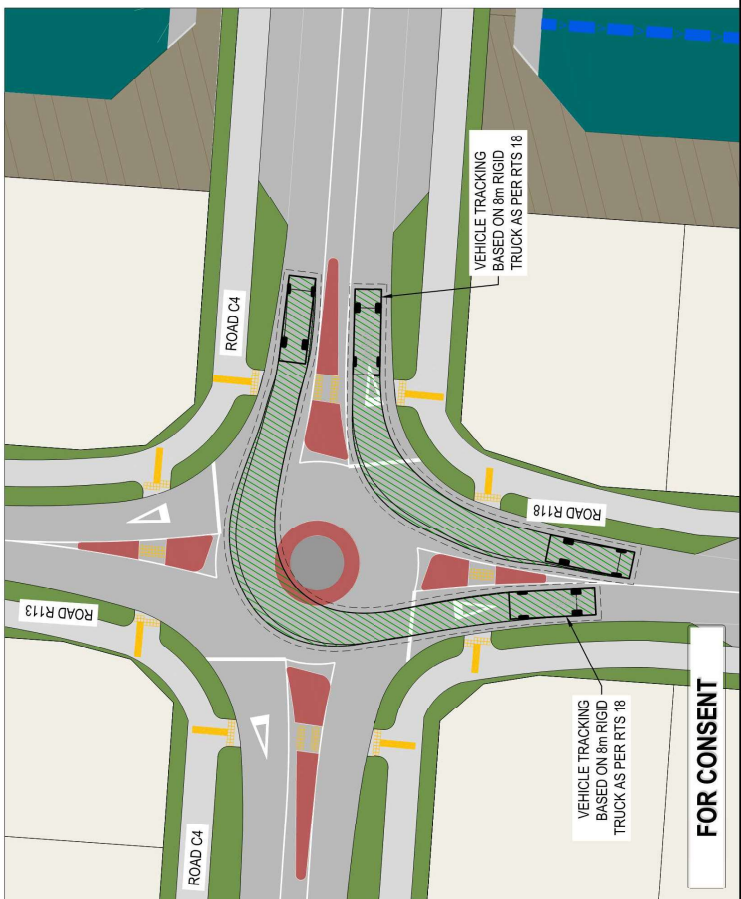
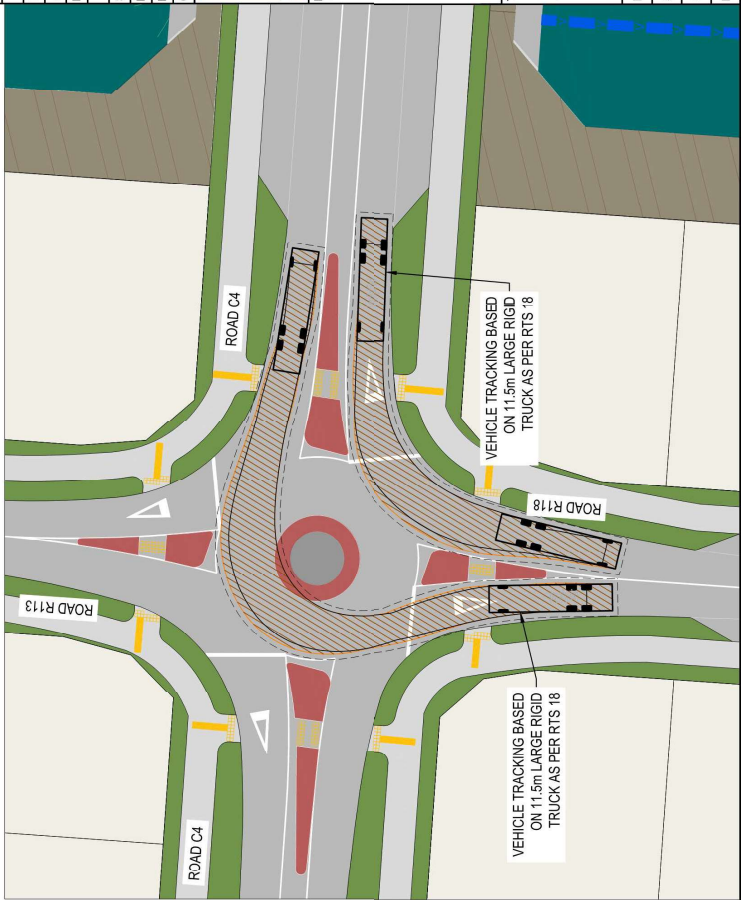
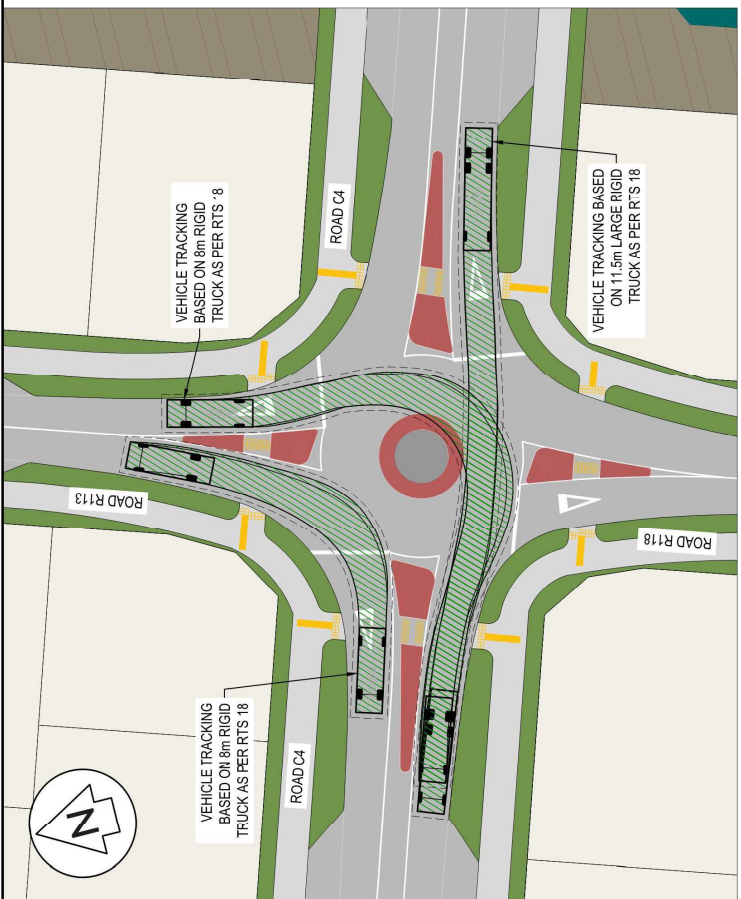
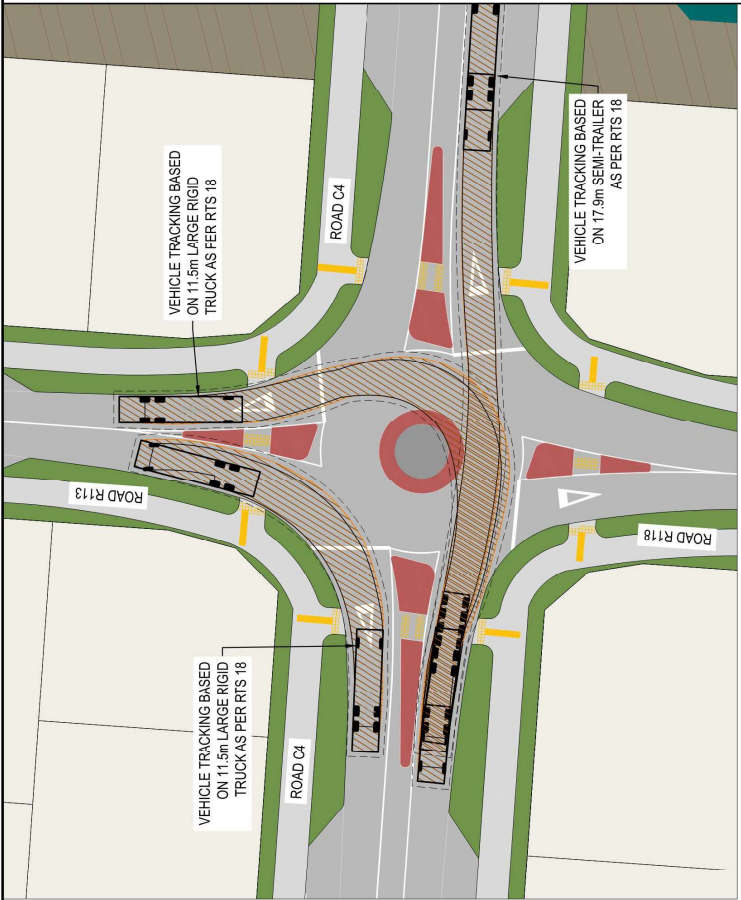
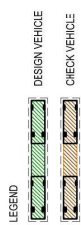


Project  
**WAIRAKEI SOUTH FTA090 DEVELOPMENT**  
**BELL ROAD, PAPAMOA FOR BELL ROAD LIMITED PARTNERSHIP**

Title  
**PROPOSED ROADING VEHICLE TRACKING MINI ROUNDABOUT R-5**

Project no.	BOP0749
Scale	1:500 @ A3
Cad file	BOP0749-C370.DWG
Drawing no.	C370-17-1
Rev	B

- NOTES
1. ALL WORKS TO BE IN ACCORDANCE WITH WESTERN BAY OF PLENTY DEVELOPMENT CODE.
  2. VEHICLE TRACKING BASED ON RT'S 18 NEW ZEALAND ON-ROAD TRACKING CURVES FOR HEAVY MOTOR VEHICLES.
  3. REFER TO C350 SERIES DRAWINGS FOR INTERSECTION DETAILS.



Rev	Description	By	Date
B	FOR CONSENT	DJ	03/26
A	DRAFT FOR REVIEW	DJ	02/26

By	Date
Survey	MAYEN
Design	DJ
Drawn	DJ
Checked	MK

**M**ayen Bay of Plenty

116 Cannon Street, Tauranga  
www.mayen.co.nz  
New Zealand

Project  
**WAIRAKEI SOUTH FTA090 DEVELOPMENT**  
**BELL ROAD, PAPAMOA**  
**FOR BELL ROAD LIMITED PARTNERSHIP**

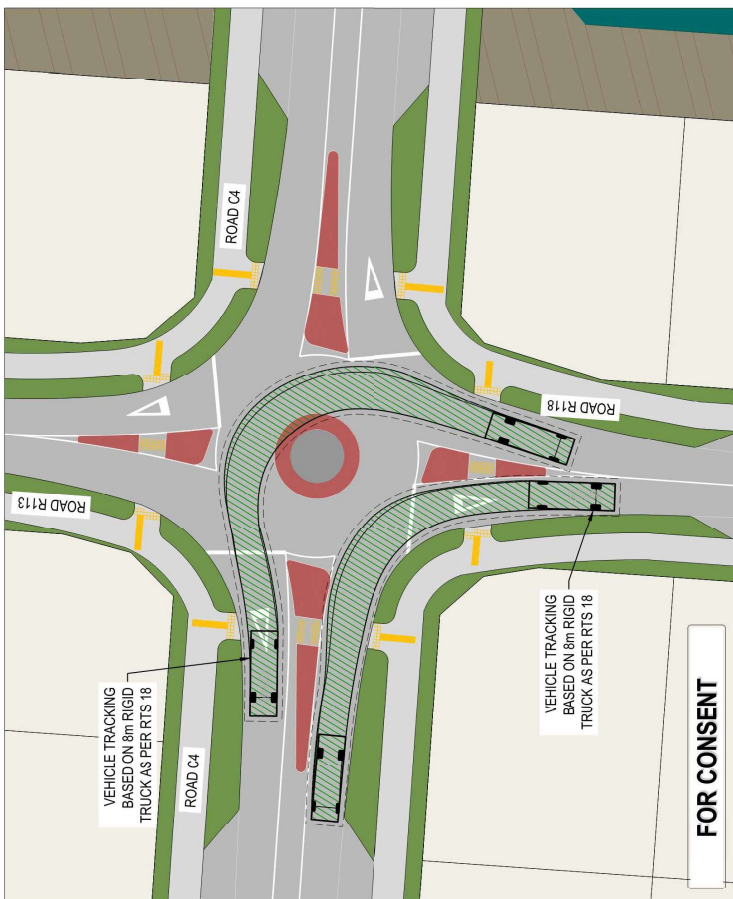
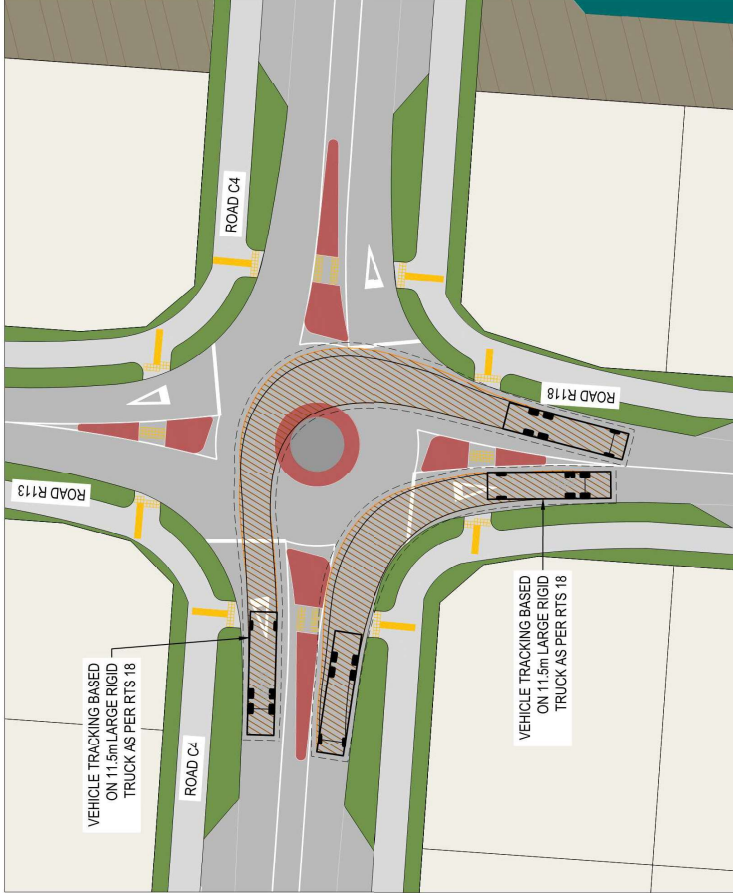
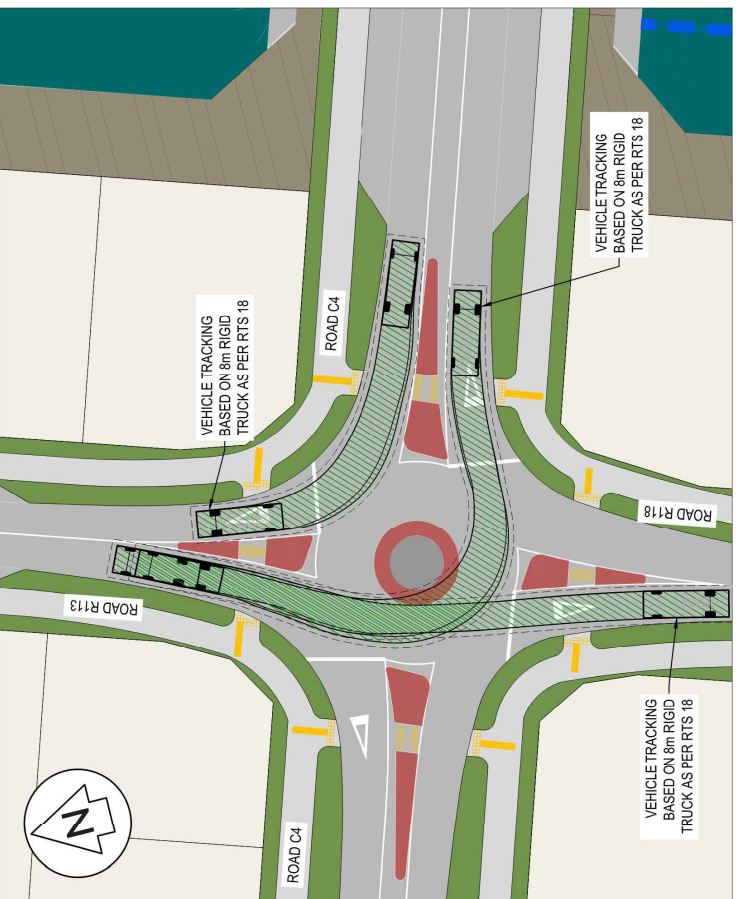
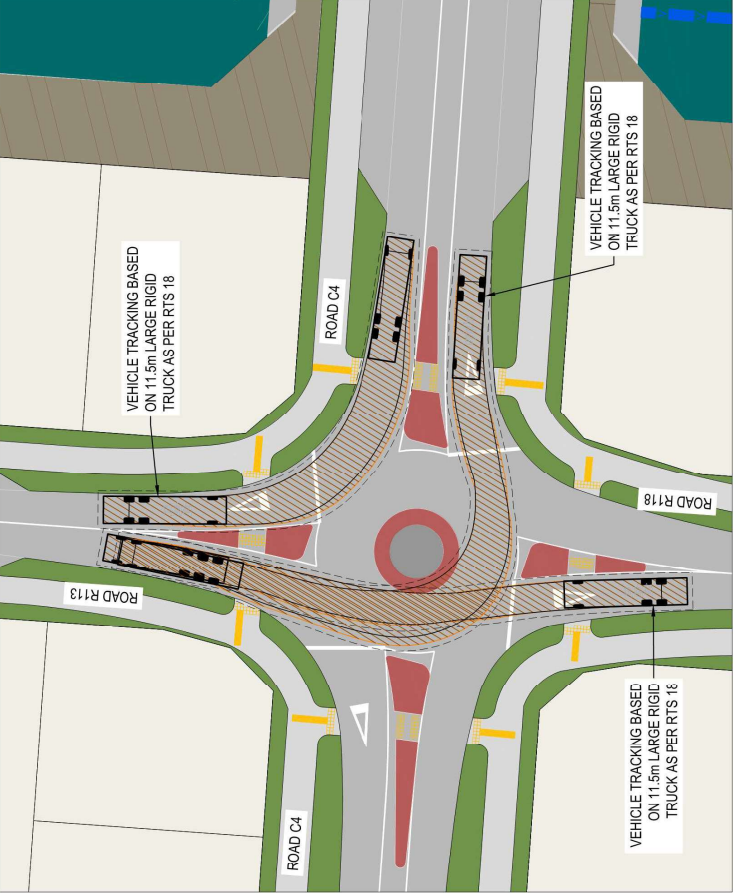
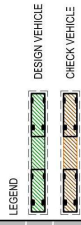
Title	
<b>PROPOSED ROADING VEHICLE TRACKING</b>	
<b>MINI ROUNDABOUT R-6</b>	

Project no.	BOP0749
Scale	1:500 @ A3
Cad file	BOP0749-C370.DWG
Drawing no.	C370-18-1
Rev.	B

**NOTES**

1. ALL WORKS TO BE IN ACCORDANCE WITH WESTERN BAY OF PLENTY DEVELOPMENT CODE.
2. VEHICLE TRACKING BASED ON RTS 18 (NEW ZEALAND ON-ROAD TRACKING CURVES FOR HEAVY MOTOR VEHICLES).
3. REFER TO C350 SERIES DRAWINGS FOR INTERSECTION DETAILS.



Rev	Description	By	Date
B	FOR CONSENT	DJ	03/26
A	DRAFT FOR REVIEW	DJ	02/26

Survey	By	Date
MAVEN	MAVEN	05/2025
Design	DJ	01/26
Drawn	DJ	01/26
Checked	JK	03/26

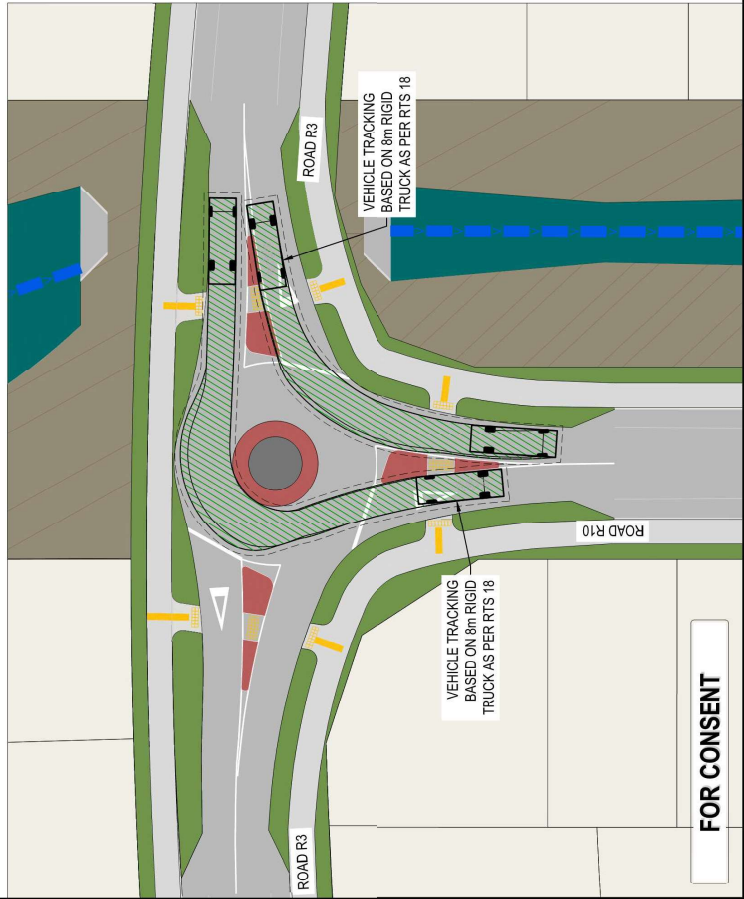
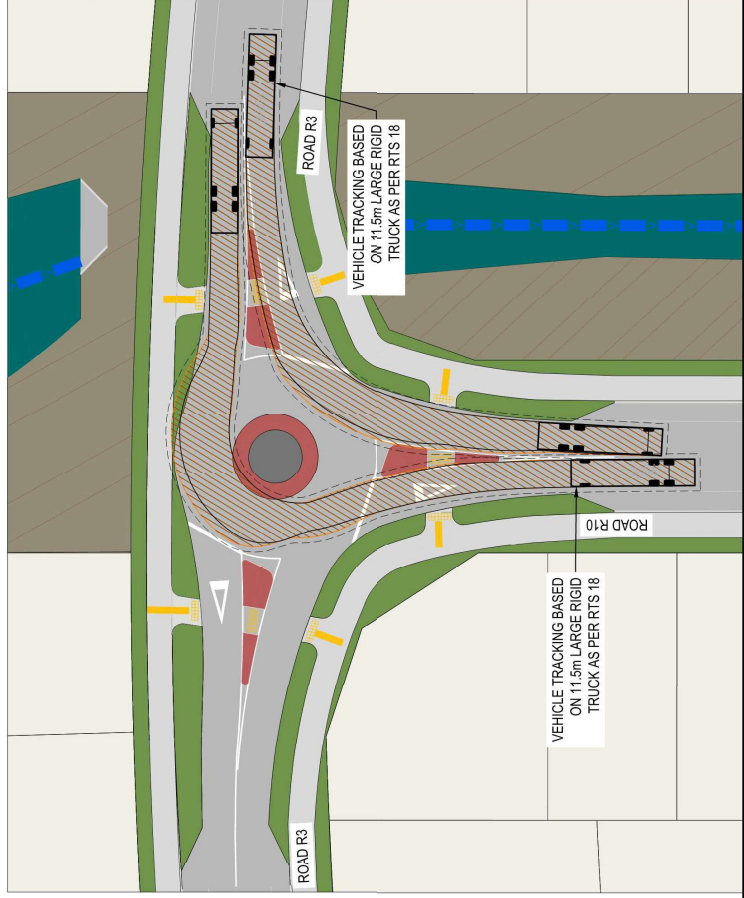
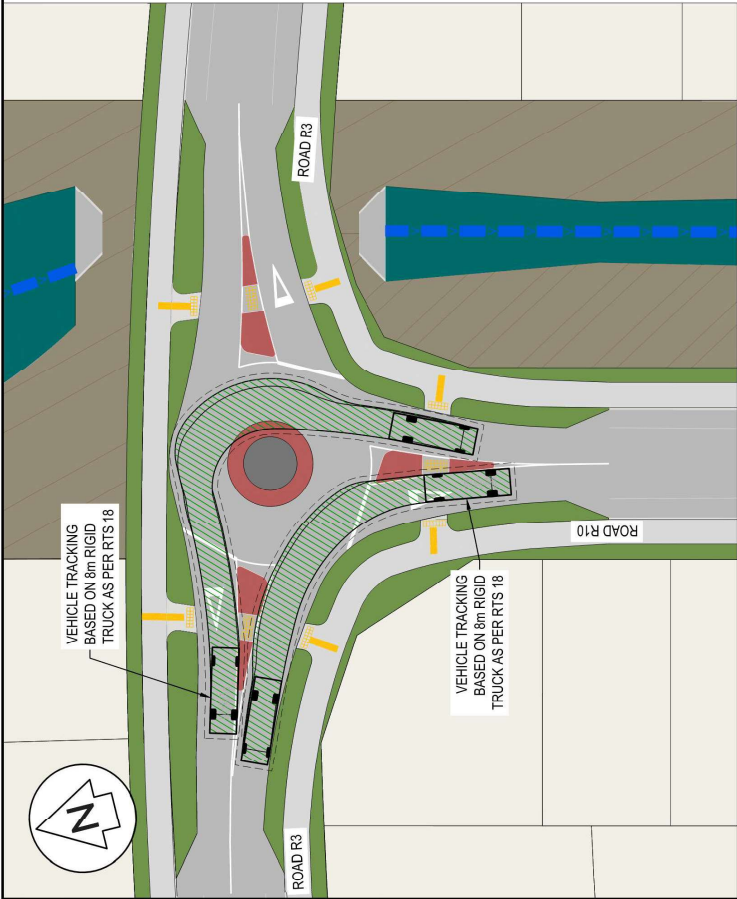
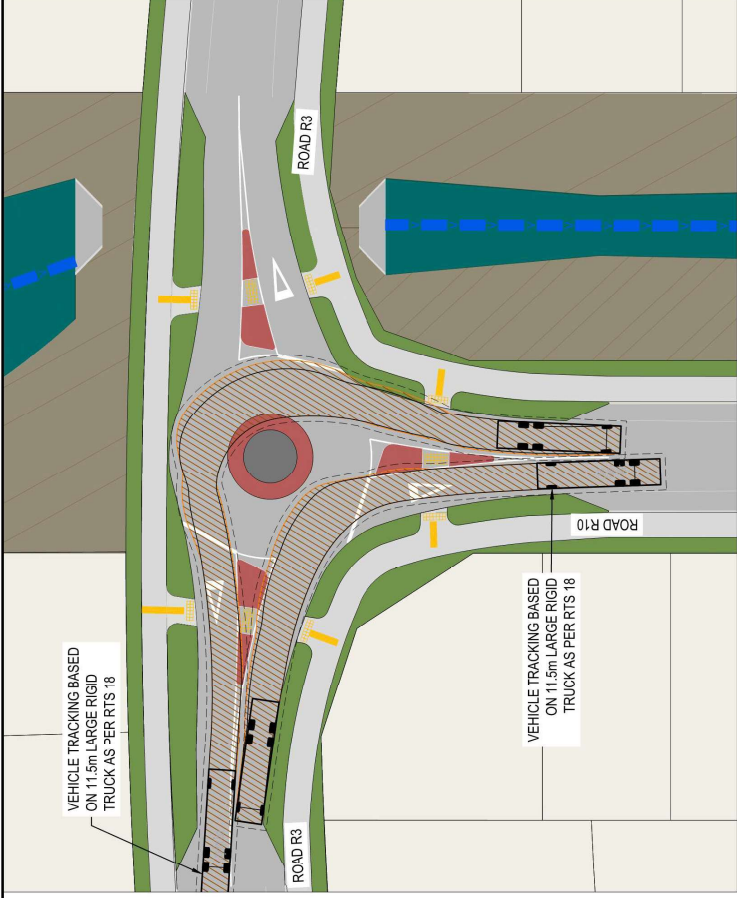
**Maven Bay of Plenty**  
 116 Cannon Street, Tauranga  
 www.maven.co.nz  
 New Zealand

**Project**  
**WAIRAKEI SOUTH FTA090 DEVELOPMENT**  
**BELL ROAD, PAPAMOA FOR BELL ROAD LIMITED PARTNERSHIP**

**Title**  
**PROPOSED ROADING VEHICLE TRACKING MINI ROUNDABOUT R-6**

Project no.	BOP0749
Scale	1:500 @ A3
Cad file	BOP0749-C370.DWG
Drawing no.	C370-18-2
Rev	B

- NOTES
1. ALL WORKS TO BE IN ACCORDANCE WITH WESTERN BAY OF PLENTY DEVELOPMENT CODE.
  2. VEHICLE TRACKING BASED ON RTS 18 NEW ZEALAND ON-ROAD TRACKING CURVES FOR HEAVY MOTOR VEHICLES.
  3. REFER TO C390 SERIES DRAWINGS FOR INTERSECTION DETAILS.



Rev	Description	By	Date
B	FOR CONSENT	DJ	03/26
A	DRAFT FOR REVIEW	DJ	02/26

Survey	MAVEN	05/2025
Design	DJ	01/26
Drawn	DJ	01/26
Checked	MK	03/26

Maven Bay of Plenty  
 116 Cannon Street, Tauranga  
 www.maven.co.nz  
 New Zealand

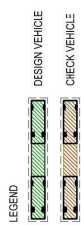
Project  
**WAIRAKEI SOUTH FTA090 DEVELOPMENT**  
**BELL ROAD, PAPAMOA**  
**FOR BELL ROAD LIMITED PARTNERSHIP**

Title  
**PROPOSED ROADING VEHICLE TRACKING MINI ROUNDABOUT R-9**

Project no.	BOP0749
Scale	1:500 @ A3
Cad file	BOP0749-C370.DWG
Drawing no.	C370-19-1
Rev	B

NOTES

1. ALL WORKS TO BE IN ACCORDANCE WITH WESTERN BAY OF PLENTY DEVELOPMENT CODE.
2. VEHICLE TRACKING BASED ON RTS 18 (NEW ZEALAND ON-ROAD TRACKING CURVES FOR HEAVY MOTOR VEHICLES).
3. REFER TO C350 SERIES DRAWINGS FOR INTERSECTION DETAILS.



**17.9m SEMI-TRAILER IS DESIGN AND CHECK VEHICLE FOR THIS INTERSECTION**

Rev	Description	By	Date
B	FOR CONSENT	DJ	03/26
A	DRAFT FOR REVIEW	DJ	02/26

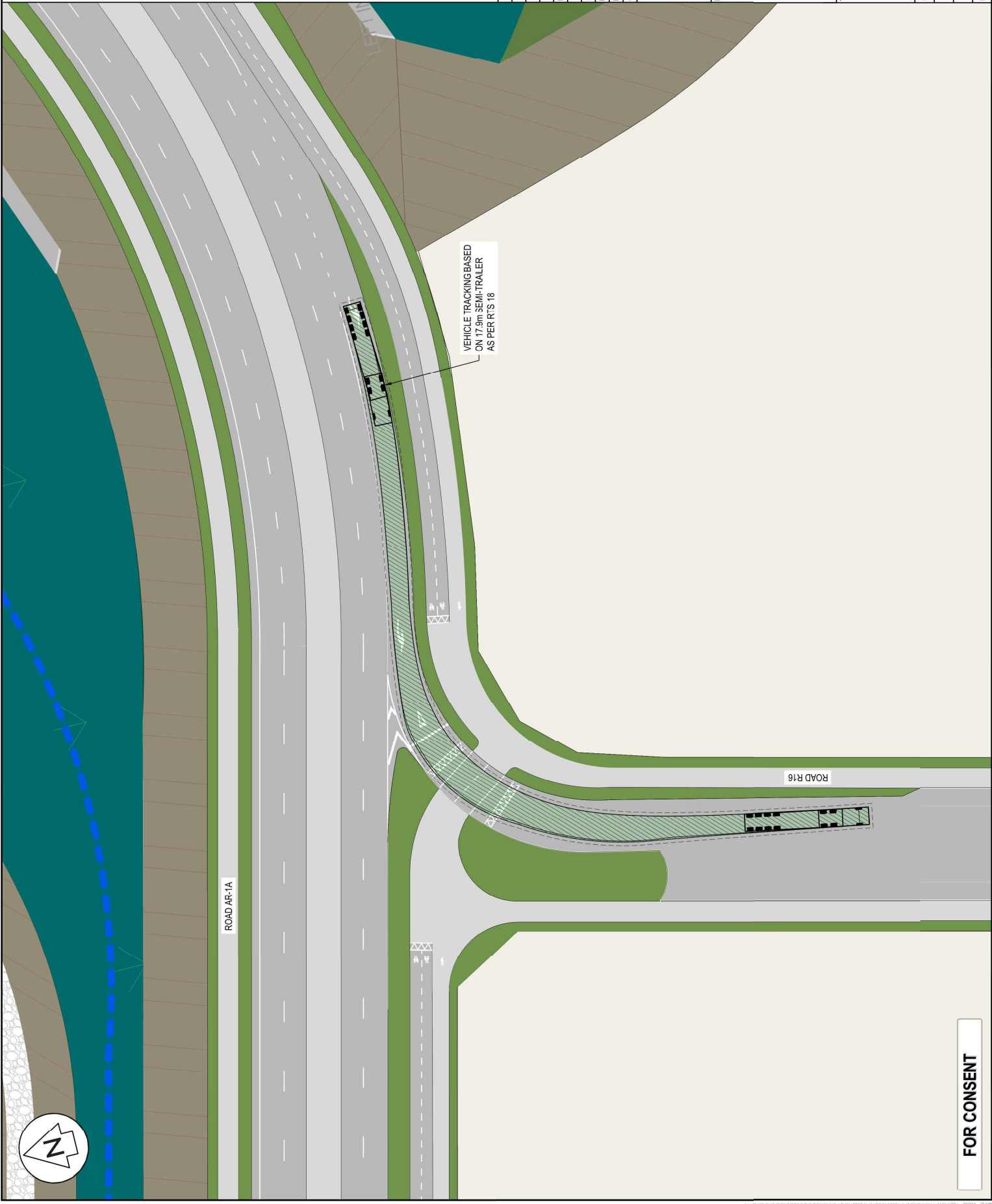
By	Date
Survey	MAYEN
Design	DJ
Drawn	DJ
Checked	MK

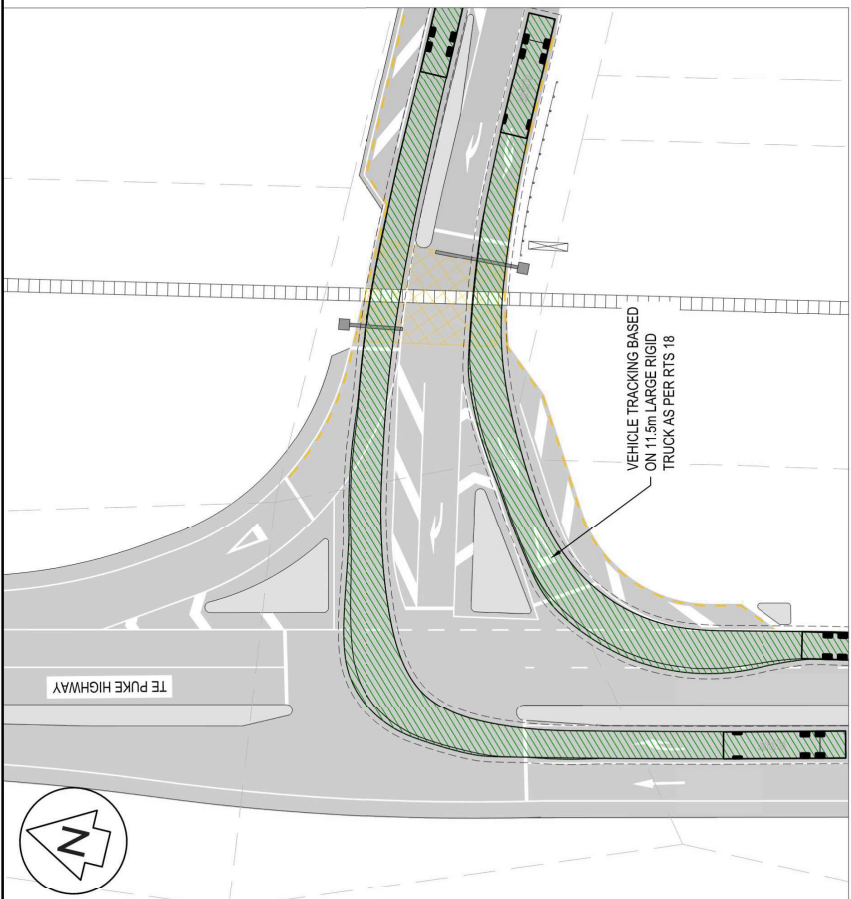
**MAYEN**  
 Maiven Bay of Plenty  
 116 Cannon Street, Tauranga  
 www.maiven.co.nz  
 New Zealand

**Project**  
 WAIRAKEI SOUTH FTA090  
 DEVELOPMENT  
 BELL ROAD, PAPAMOA  
 FOR BELL ROAD  
 LIMITED PARTNERSHIP

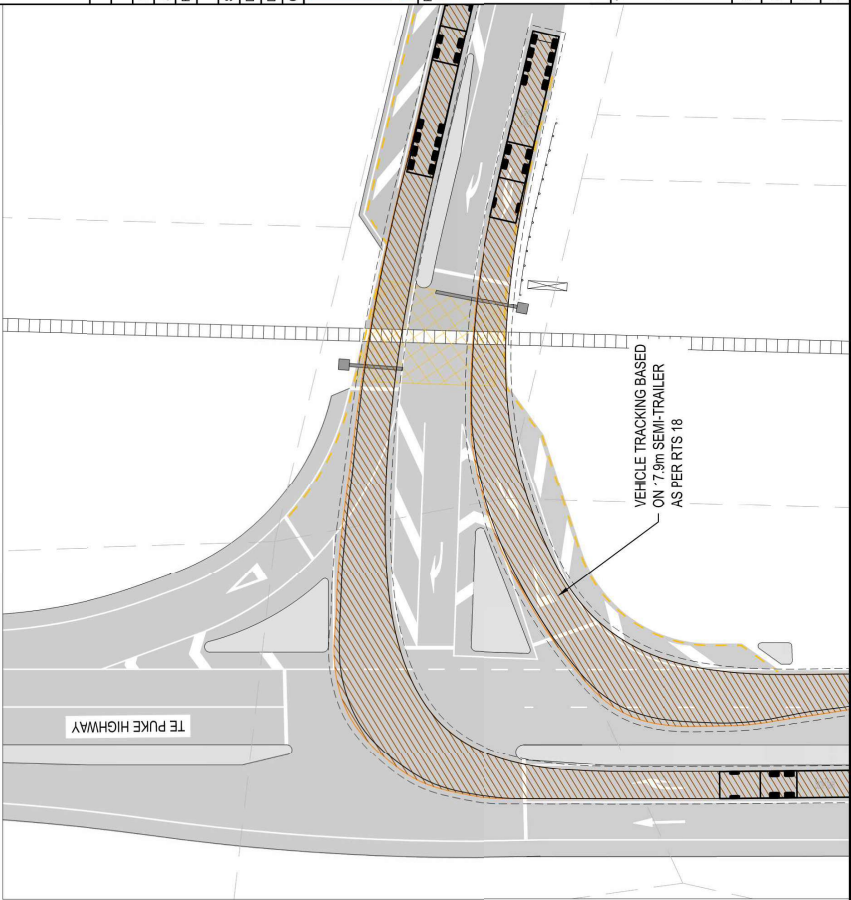
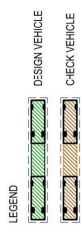
**Title**  
 PROPOSED ROADING  
 VEHICLE TRACKING  
 LEFT IN OFF AR-1A

Project no.	BOP0749
Scale	1:500 @ A3
Cad file	BOP0749-C370.DWG
Drawing no.	C370-20-1
Rev	B





- NOTES
1. ALL WORKS TO BE IN ACCORDANCE WITH WESTERN BAY OF PLENTY DEVELOPMENT CODE.
  2. VEHICLE TRACKING BASED ON RTS 18 (NEW ZEALAND ON-ROAD TRACKING CURVES FOR HEAVY MOTOR VEHICLES).
  3. REFER TO C350 SERIES DRAWINGS FOR INTERSECTION DETAILS.



Rev	Description	By	Date
B	FOR CONSENT	AJS	04/26
A	FOR DISCUSSION	AJS	02/26

Survey	By	Date
MAVEN	MAVEN	05/2025
Design	By	Date
AJS	AJS	03/26
Drawn	By	Date
AJS	AJS	03/26
Checked	By	Date
JMK	JMK	04/26

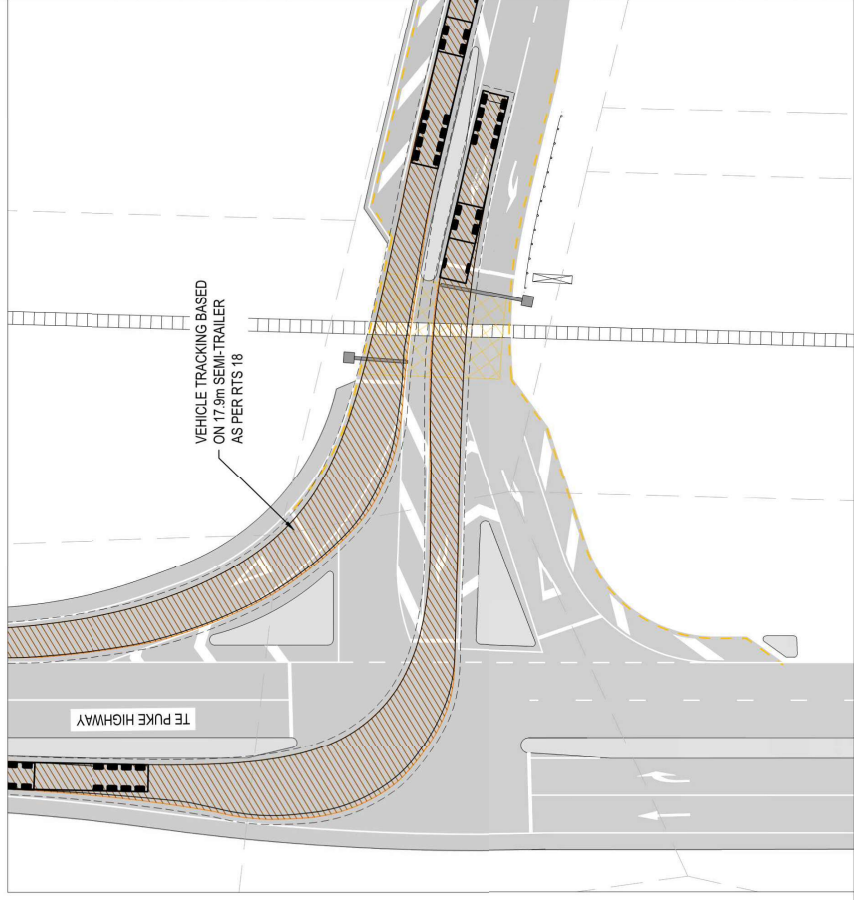
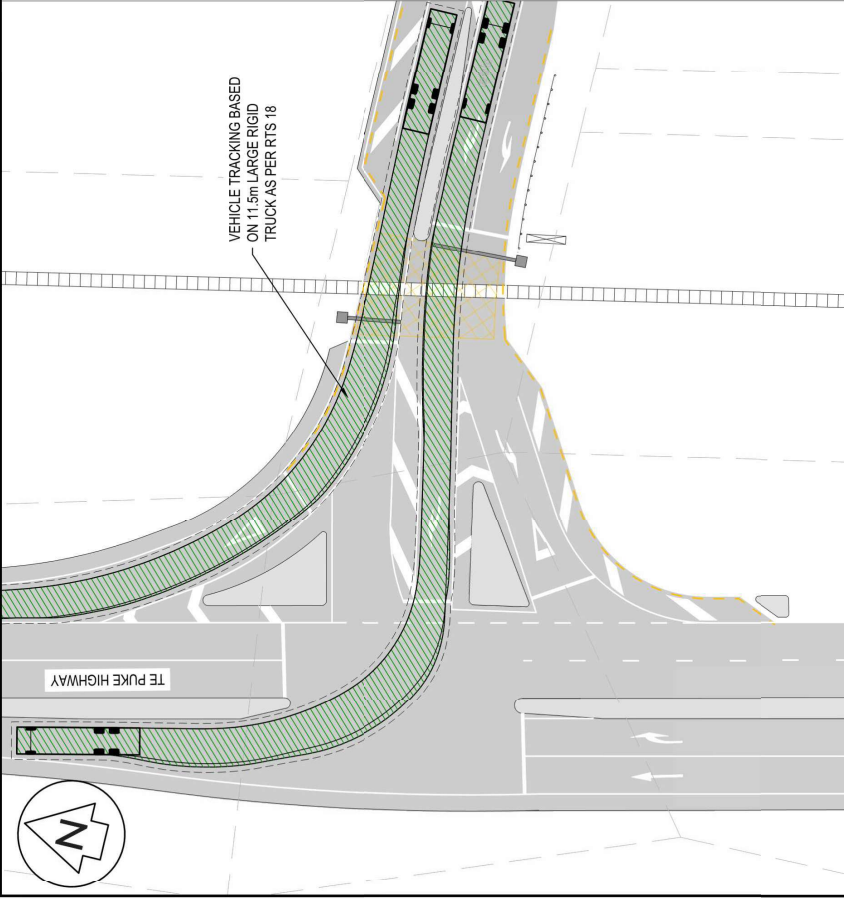
**Maven Bay of Plenty**  
 1100 Lakeside Drive  
 PO Box 1000  
 Tairāneka, New Zealand  
 www.maven.co.nz

Project  
**WAIRAKEI SOUTH FTA090 DEVELOPMENT**  
**BELL ROAD, PAPAMOA**  
**FOR BELL ROAD LIMITED PARTNERSHIP**

Title  
**PROPOSED VEHICLE TRACKING TE PUKE HWY BELL RD INT.**

Project no.	BOP0749
Scale	1:500 @ A3
Cad file	BOP0749-C370-21.DWG
Drawing no.	C370-21-1
Rev	<b>B</b>

**FOR CONSENT**



- NOTES
1. ALL WORKS TO BE IN ACCORDANCE WITH WESTERN BAY OF PLENTY DEVELOPMENT CODE.
  2. VEHICLE TRACKING BASED ON RTS 18 (NEW ZEALAND ON-ROAD TRACKING CURVES FOR HEAVY MOTOR VEHICLES).
  3. REFER TO C350 SERIES DRAWINGS FOR INTERSECTION DETAILS.



Rev	Description	By	Date
B	FOR CONSENT	AJS	04/26
A	FOR DISCUSSION	AJS	02/26

By	Date
Survey	MAYEN
Design	AJS
Drawn	AJS
Checked	MK

Project  
**WAIRAKEI SOUTH FTA090 DEVELOPMENT**  
**BELL ROAD, PAPAMOA**  
**FOR BELL ROAD LIMITED PARTNERSHIP**

Title  
**PROPOSED VEHICLE TRACKING TE PUKE HWY BELL RD INT.**

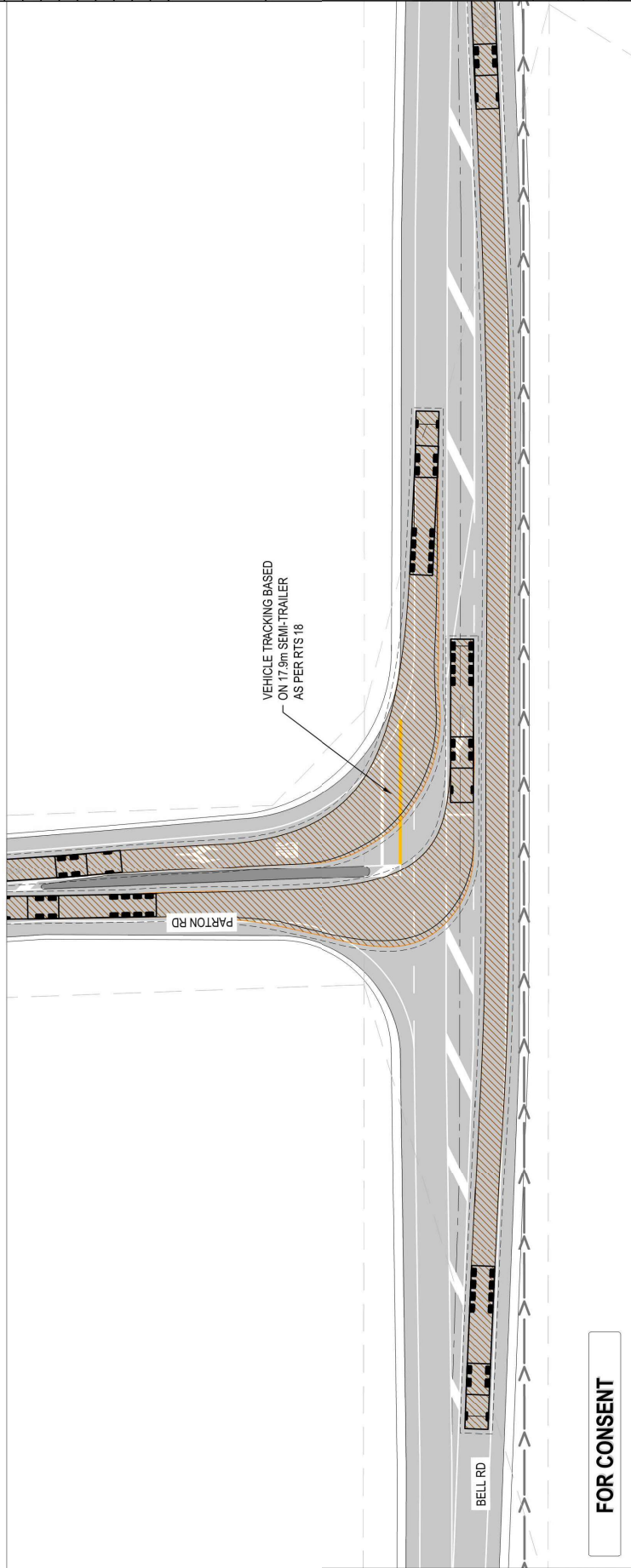
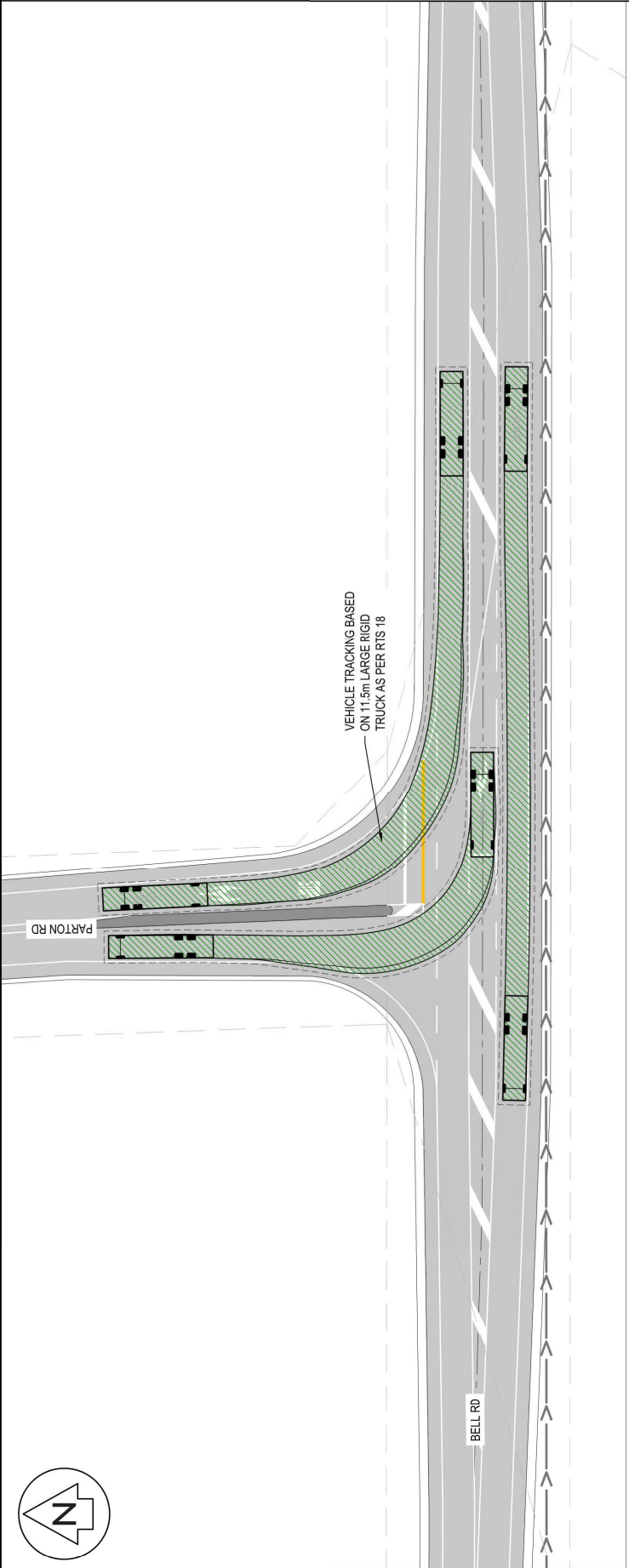
Project no.	BOP0749
Scale	1:500 @ A3
Cad file	BOP0749-C370-21.DWG
Drawing no.	C370-21-2
Rev	B

FOR CONSENT



**NOTES**

1. ALL WORKS TO BE IN ACCORDANCE WITH WESTERN BAY OF PLENTY DEVELOPMENT CODE.
2. VEHICLE TRACKING BASED ON RTS 18 (NEW ZEALAND ON-ROAD TRACKING CURVES FOR HEAVY MOTOR VEHICLES).
3. REFER TO C350 SERIES DRAWINGS FOR INTERSECTION DETAILS.



**FOR CONSENT**

Rev	Description	By	Date
B	FOR CONSENT	AJS	04/26
A	FOR DISCUSSION	AJS	02/26

Survey	MAVEN	05/2025
Design	AJS	03/26
Drawn	AJS	03/26
Checked	MK	04/26

**Maven Bay of Plenty**  
 116 Cameron Street, Tauranga  
 New Zealand  
 www.maven.co.nz  
 info@maven.co.nz

**Project**  
**WAIRAKEI SOUTH FTA090**  
**DEVELOPMENT**  
**BELL ROAD, PAPAMOA**  
**FOR BELL ROAD**  
**LIMITED PARTNERSHIP**

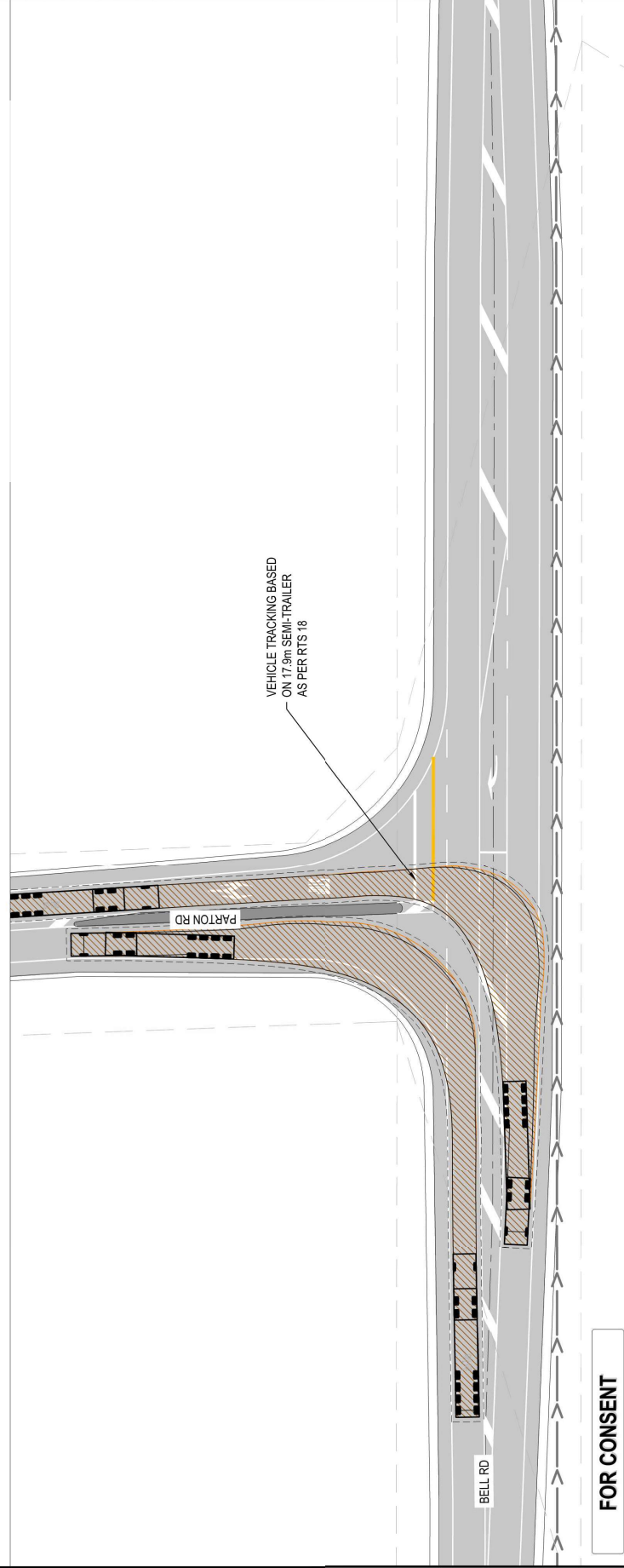
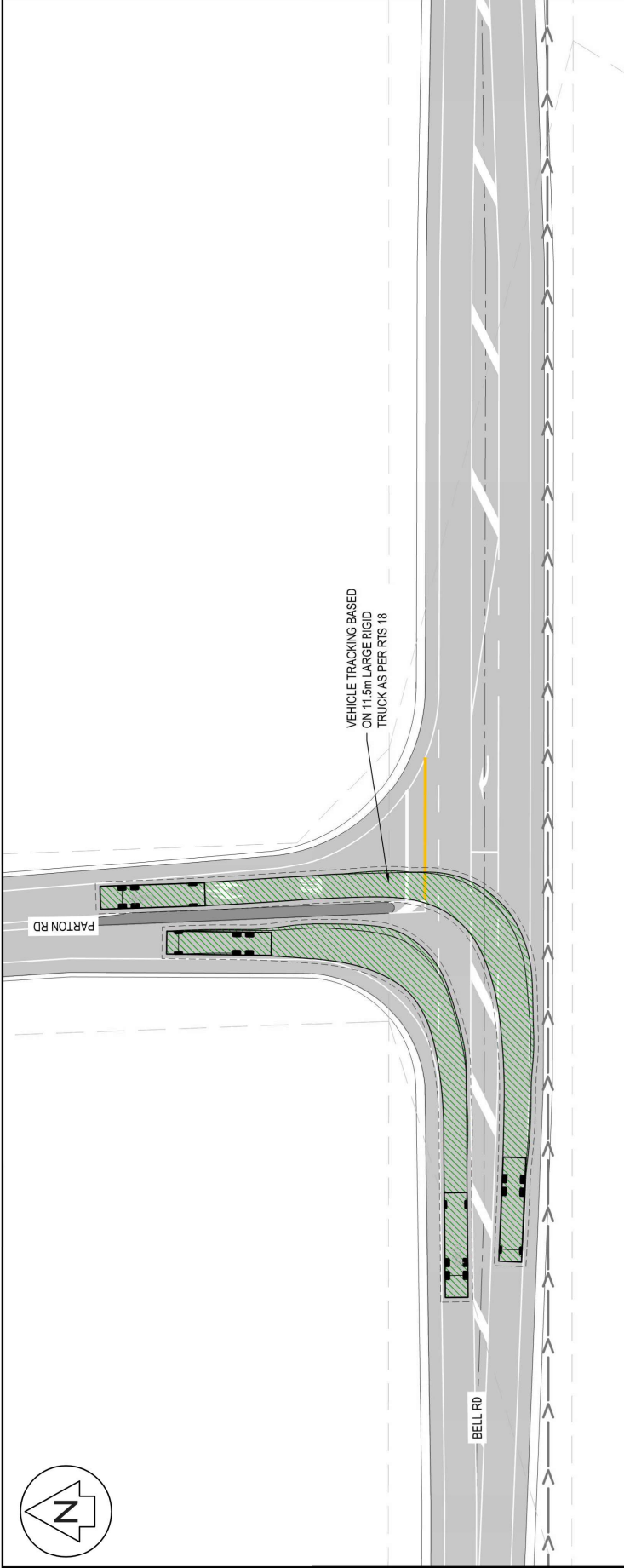
**Title**  
**PROPOSED VEHICLE**  
**TRACKING PARTON RD**  
**BELL RD INT.**

Project no.	BOP0749
Scale	1:500 @ A3
Card file	BOP0749-C370-21.DWG
Drawing no.	C370-21-3
Rev	<b>B</b>



NOTES

- 1. ALL WORKS TO BE IN ACCORDANCE WITH WESTERN BAY OF PLENTY DEVELOPMENT CODE
- 2. VEHICLE TRACKING BASED ON RTS 18 (NEW ZEALAND ON-ROAD TRACKING CURVES FOR HEAVY MOTOR VEHICLES)
- 3. REFER TO C350 SERIES DRAWINGS FOR INTERSECTION DETAILS.



FOR CONSENT

Rev	Description	By	Date
B	FOR CONSENT	AJS	04/26
A	FOR DISCUSSION	AJS	02/26

Survey	MAVEN	05/2025
Design	AJS	03/26
Drawn	AJS	03/26
Checked	MK	04/26

Maven Bay of Plenty  
 116 Cameron Street, Tauranga  
 www.maven.co.nz

Project  
**WAIRAKEI SOUTH FTA090**  
**DEVELOPMENT**  
**BELL ROAD, PAPAMOA**  
**FOR BELL ROAD**  
**LIMITED PARTNERSHIP**

Title  
**PROPOSED VEHICLE**  
**TRACKING PARTON RD**  
**BELL RD INT.**

Project no.	BOP0749
Scale	1:500 @ A3
Card file	BOP0749-C370-21.DWG
Drawing no.	C370-21-4
Rev	B