

- NOTES**
- ALL WORKS TO BE IN ACCORDANCE WITH THE WESTERN BAY OF PLENTY DISTRICT COUNCIL DEVELOPMENT CODE.
  - MINIMUM COVER SHALL BE:  
ROADS, FOOTPATHS, CROSSINGS: 1000MM  
BERMS 800MM  
SERVICE CONNECTIONS: 350MM
  - WATERWAYS LAD ACROSS ROADS SHALL BE BACKFILLED WITH HARD RILL COMPACTED IN 200MM LAYERS ABOVE THE EMBEDED MATERIAL.
  - ALL UP-PIPE SHALL BE P80 MINIMUM PRESSURE RATED WITH SPACED AND SPORET RUBBER RING JOINTS.
  - ALL PE PIPE SHALL BE P12.5 MINIMUM PRESSURE RATED WITH BUTT-WELDED, WELD BEADS SHALL BE REMOVED TO PROVIDE A SMOOTH BORE.
  - ALL NON-METALLIC PIPES ARE TO HAVE TRACER WIRE FITTED TO COUNCIL STANDARDS.
  - PIPES SHALL BE BEDDED AND SURROUNDED TO 150MM ABOVE THE PIPE SOFFIT WITH SAND OR AP20.
  - METAL DETECTOR TAPE PRINTED WITH WATER PIPE WARNING SHALL BE LAD 150MM ABOVE ALL WATERWAYS.
  - A YELLOW ISOSCELES TRIANGLE WITH CAT'S EYE POINTING TO FH SHALL BE PAINTED IN THE CENTRE OF ALL SEALED ROADS, WHERE HYDRANTS ARE LOCATED BEHIND KERBS, THE KERB SHALL ALSO BE PAINTED YELLOW.
  - ALL VALVES TO BE MARKED WITH SANICUT KERB AND BLUE PAINT, ALL VALVES SHALL BE MARKED WITH APPROVED CONCRETE MARKER POST.
  - ALL UTILITY MARKERS SHALL BE TO THE DESIGN OF THE COUNCIL.
  - TAPE OR SIMILAR APPROVED BY THE ENGINEER.

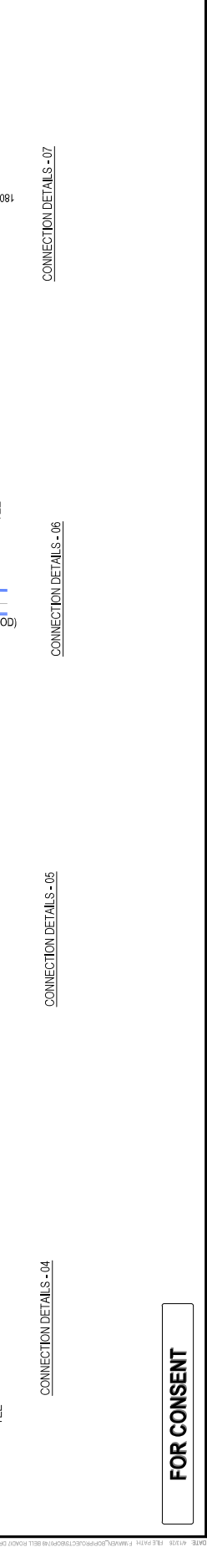
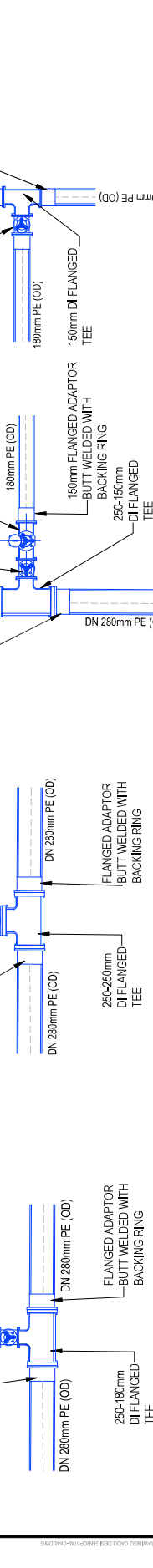
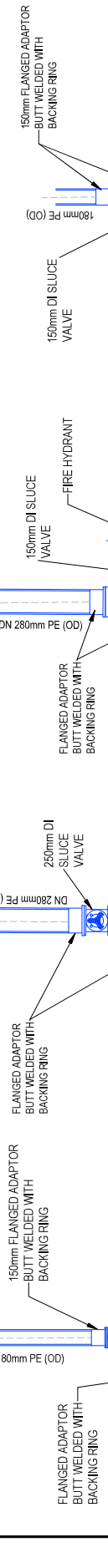
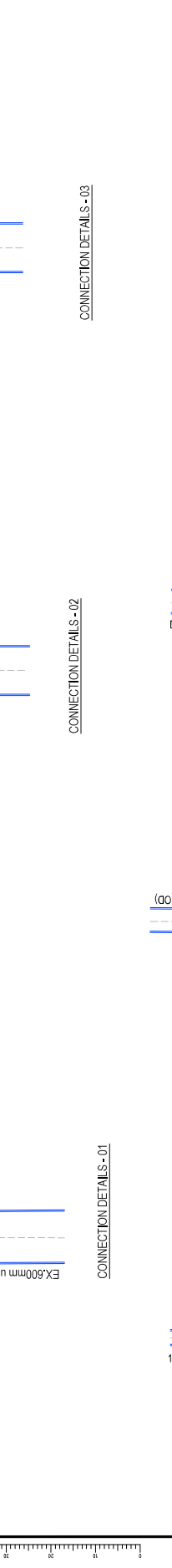
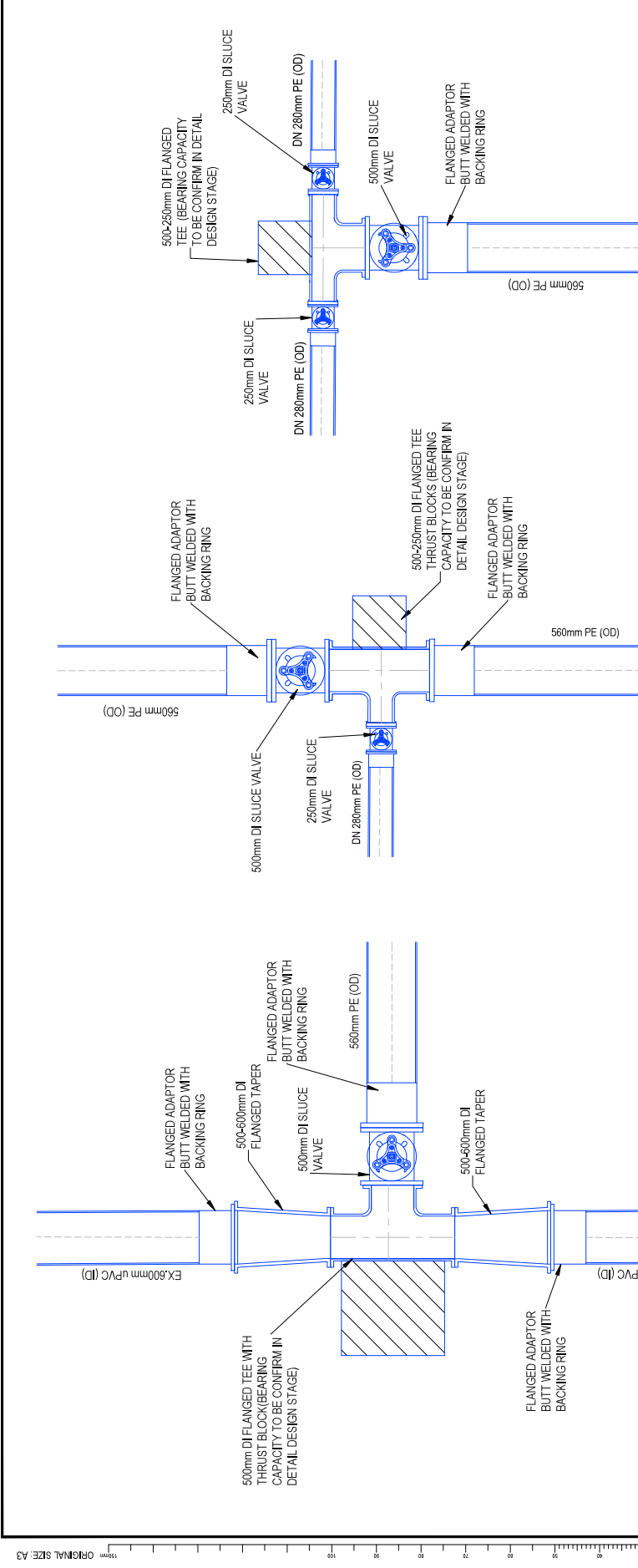
FOR CONSENT	DP	03/26	
FOR REVIEW	DP	01/26	
Rev	Description	By	Date
Survey	M/AVEN		05/2025
Design	DP		01/26
Drawn	DP		11/25
Checked	CS		01/26

**Maven Bay of Plenty**  
 118 Cameron Street, Tauranga  
 www.maven.co.nz  
 07 778 8200

**Project**  
**WAIRAKEI SOUTH FTA090**  
**DEVELOPMENT**  
**BELL ROAD, PAPAMOA**  
**FOR BELL ROAD**  
**LIMITED PARTNERSHIP**

**Title**  
**PROPOSED**  
**WATER SUPPLY**  
**CONNECTION DETAILS**

Project no.	BOP0749
Scale	1:50 @ A3
Client	BOP/PLC/KAJ/DMG
Drawing no.	CS610-1
Rev	B



CONNECTION DETAILS - 01  
 CONNECTION DETAILS - 02  
 CONNECTION DETAILS - 03  
 CONNECTION DETAILS - 04  
 CONNECTION DETAILS - 05  
 CONNECTION DETAILS - 06  
 CONNECTION DETAILS - 07

**FOR CONSENT**

**NOTES**

- ALL WORKS TO BE IN ACCORDANCE WITH THE WESTERN BAY OF PLENTY DISTRICT COUNCIL DEVELOPMENT CODE.
- MINIMUM COVER SHALL BE:  
ROADS, FOOTPATHS, CROSSINGS: 1000MM  
BERMS 800MM  
SERVICE CONNECTIONS: 350MM  
WATERMANS LAD ACROSS ROADS SHALL BE BACKFILLED WITH HARD RILL COMPACTED IN 200MM LAYERS ABOVE THE EMBEDMENT MATERIAL.
- ALL PIPE SHALL BE 800MM MINIMUM PRESSURE RATED WITH SPOUT AND SOCKET RUBBER RING JOINTS.
- ALL PE PIPE SHALL BE PN12.5 MINIMUM PRESSURE RATED WITH BUTT WELDED, WELD BEADS SHALL BE REMOVED TO PROVIDE A SMOOTH BORE.
- ALL NON-METALLIC PIPES ARE TO HAVE TRACER WIRE FITTED TO COUNCIL STANDARDS.
- 150MM ABOVE THE PIPE SOFFIT WITH SAND OR AP20.
- METAL DETECTOR TAPE PRINTED WITH WATER PIPE MARKINGS.
- WATERMANS LAD TO BE LAD 150MM ABOVE ALL POINTING TO FH SHALL BE PAINTED IN THE CENTRE OF ALL SEALED ROADS, WHERE HYDRANTS ARE LOCATED BEHIND KERBS, THE KERB SHALL ALSO BE PAINTED YELLOW.
- ALL VALVES TO BE MARKED WITH SAWCUT KERB AND BLUE PAINT. ALL VALVES SHALL BE MARKED WITH APPROVED CONCRETE MARKER POST.
- ALL VALVES TO BE MARKED WITH APPROVED CONCRETE MARKER POST.
- TAPE OR SIMILAR APPROVED BY THE ENGINEER.

ORIGINAL SIZE: A3

Rev	Description	By	Date
B	FOR CONSENT	DP	03/26
A	FOR REVIEW	DP	01/25

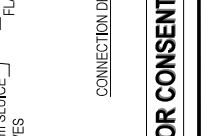
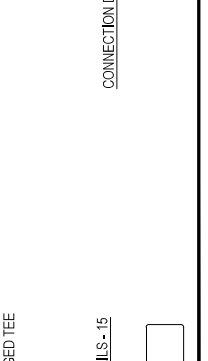
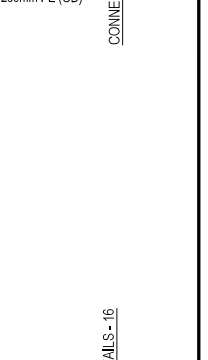
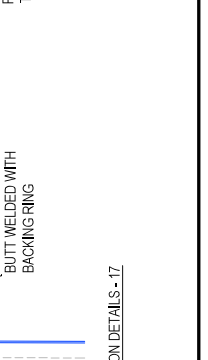
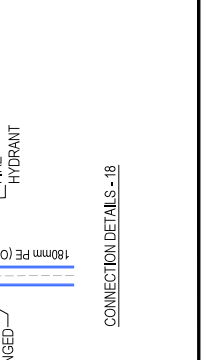
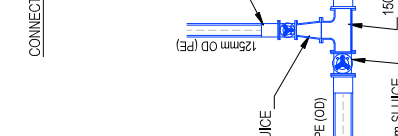
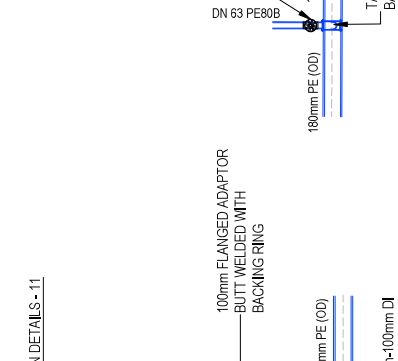
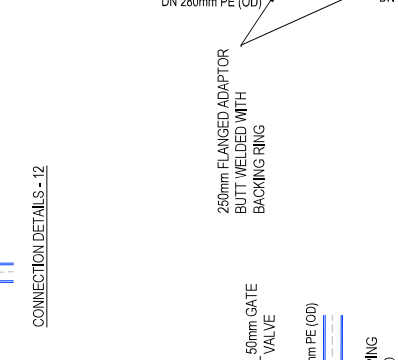
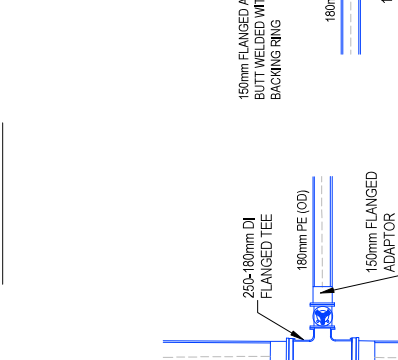
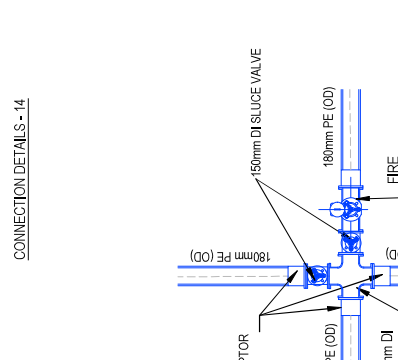
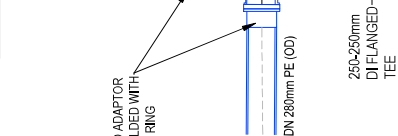
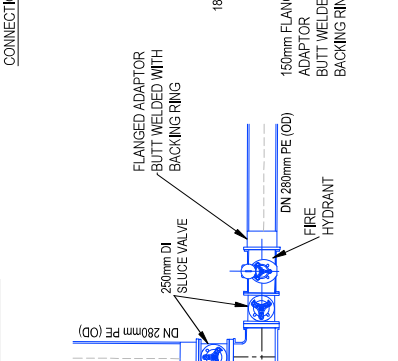
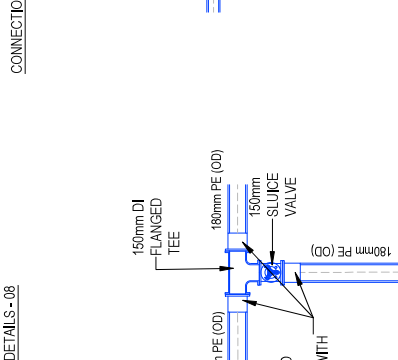
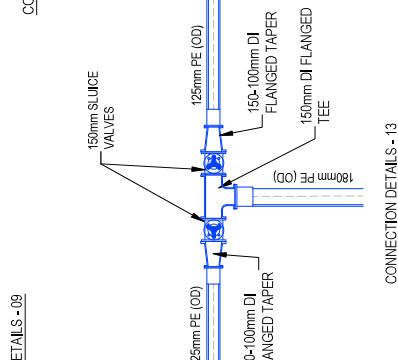
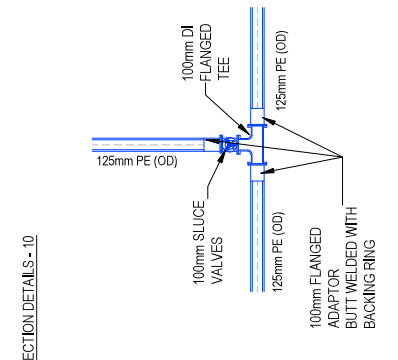
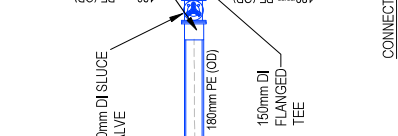
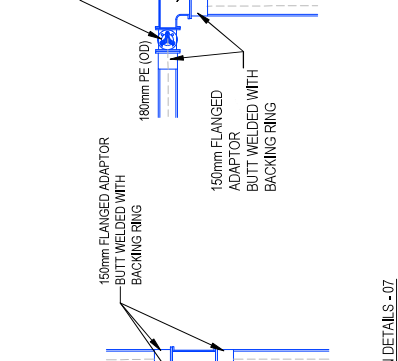
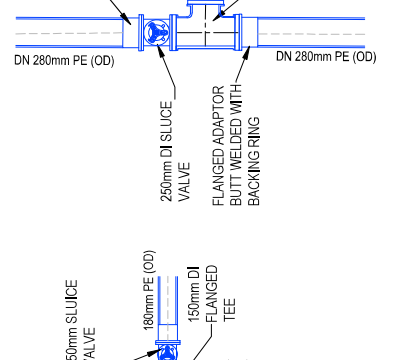
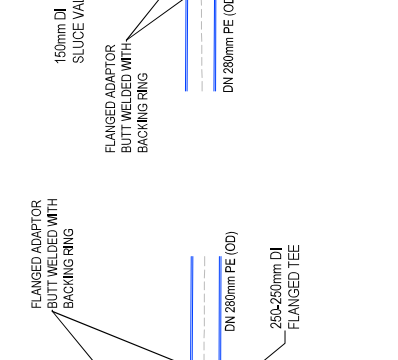
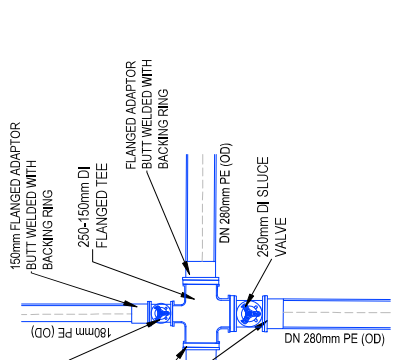
Survey	MAVEN	Date	06/2025
Design	DP	01/25	
Drawn	DP	01/25	
Checked	CS	01/25	

**Maven Bay of Plenty**  
 118 Cameron Street, Tauranga  
 www.maven.co.nz  
 07 778 9200

**Project**  
**WAIRAKEI SOUTH FTA090 DEVELOPMENT**  
**BELL ROAD, PAPAMOA**  
**FOR BELL ROAD LIMITED PARTNERSHIP**

**Title**  
**PROPOSED WATER SUPPLY CONNECTION DETAILS**

Project no.	BOP0749
Scale	1:50 @ A3
Client	BOP/PLC/SL/DWG
Drawing no.	CS60-2
Rev	B



**FOR CONSENT**

- NOTES**
- ALL WORKS TO BE IN ACCORDANCE WITH THE WESTERN BAY OF PLENTY DISTRICT COUNCIL DEVELOPMENT CODE.
  - MINIMUM COVER SHALL BE:  
ROADS, FOOTPATHS, CROSSINGS: 1000MM  
BERMS 800MM  
SERVICE CONNECTIONS: 300MM
  - WATERMANS LAD ACROSS ROADS SHALL BE BACKFILLED WITH HARD ROLL COMPACTED IN 200MM LAYERS ABOVE THE EMBEDMENT MATERIAL.
  - ALL PIPE SHALL BE PN16 MINIMUM PRESSURE RATED WITH SPOUT AND SOCKET RUBBER RING JOINTS.
  - ALL PE PIPE SHALL BE PN12.5 MINIMUM PRESSURE RATED WITH BUTT WELDED, WELD BEADS SHALL BE REMOVED TO PROVIDE A SMOOTH BORE.
  - ALL NON-METALLIC PIPES ARE TO HAVE TRACER WIRE FITTED TO COUNCIL STANDARDS.
  - PIPES SHALL BE BEDDED AND SURROUNDED TO 150MM ABOVE THE PIPE SOFFIT WITH SAND OR AP20.
  - METAL DETECTOR TAPE PRINTED WITH WATER PIPE SYMBOLS SHALL BE LAD 150MM ABOVE ALL WATERMANS.
  - A YELLOW ISOSCELES TRIANGLE WITH CAT'S EYE POINTING TO FH SHALL BE PAINTED IN THE CENTRE OF ALL SEALED ROADS, WHERE HYDRANTS ARE LOCATED BEHIND KERBS. THE KERB SHALL ALSO BE PAINTED YELLOW.
  - ALL VALVES TO BE MARKED WITH SAWCUT KERB AND BLUE PAINT. ALL VALVES SHALL BE MARKED WITH APPROVED CONCRETE MARKER POST.
  - ALL VALVES SHALL BE MARKED WITH THE DESIGN TAPE OR SIMILAR APPROVED BY THE ENGINEER.

Rev	Description	By	Date
B	FOR CONSENT	DP	03/26
A	FOR REVIEW	DP	01/26

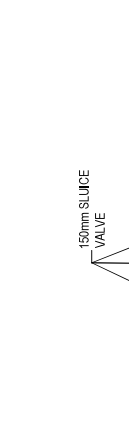
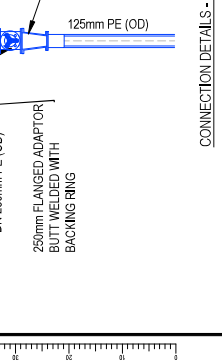
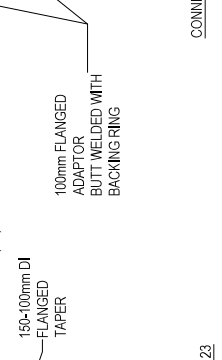
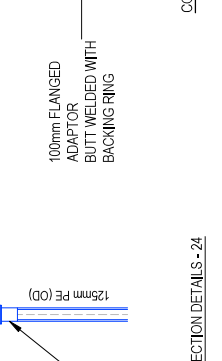
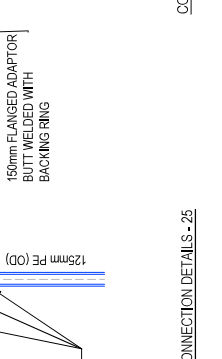
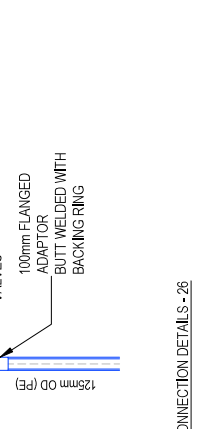
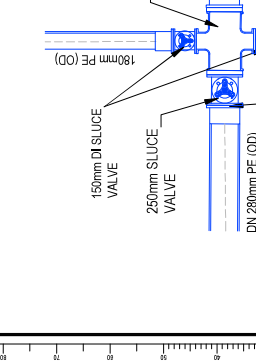
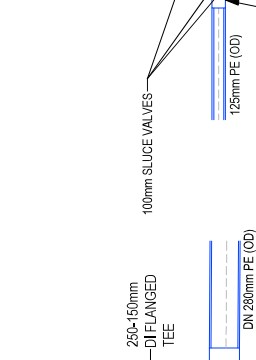
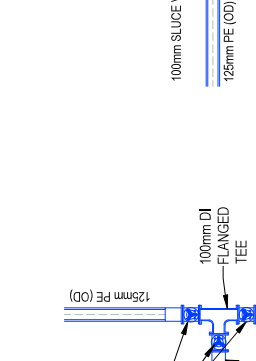
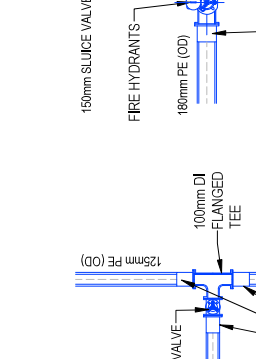
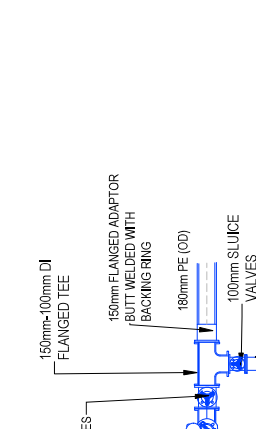
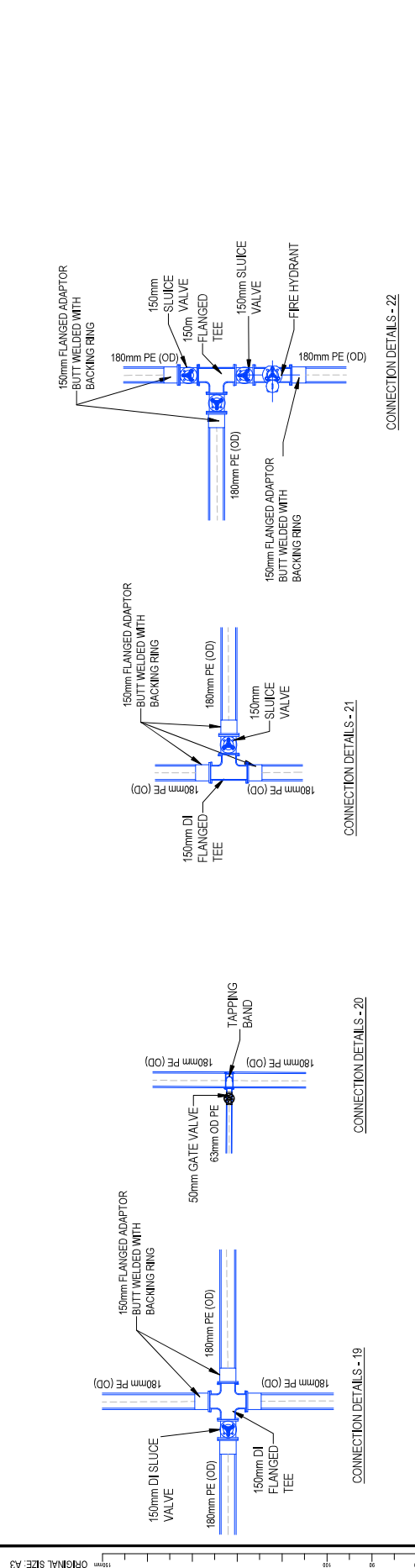
Survey	MAVEN	Date	05/2025
Design	DP	01/26	
Drawn	DP	01/26	
Checked	CS	01/26	

**M A V E N**  
 M A V E N Bay of Plenty  
 118 Cameron Street, Tauranga  
 www.mavenco.co.nz  
 (07) 778 2222

**Project**  
**WAIRAKEI SOUTH FTA090**  
**DEVELOPMENT**  
**BELL ROAD, PAPAMOA**  
**FOR BELL ROAD**  
**LIMITED PARTNERSHIP**

**Title**  
**PROPOSED**  
**WATER SUPPLY**  
**CONNECTION DETAILS**

Project no.	BOP0749
Scale	1:50 @ A3
Client	BOP/PLC/KAU/DWG
Drawing no.	CS60-3
Rev	B



**FOR CONSENT**

- NOTES**
- ALL WORKS TO BE IN ACCORDANCE WITH THE WESTERN BAY OF PLENTY DISTRICT COUNCIL DEVELOPMENT CODE.
  - MINIMUM COVER SHALL BE:
    - ROADS, FOOTPATHS, CROSSINGS: 1000MM
    - BERMS 800MM
    - 350MM
  - SERVICE CONNECTIONS:
    - WATERMANS LAD ACROSS ROADS SHALL BE BACKFILLED WITH HARDPILL COMPACTED IN 200MM LAYERS ABOVE THE EMBEDMENT MATERIAL.
    - ALL PVC PIPE SHALL BE PERFORM MINIMUM PRESSURE RATED WITH SPENDY AND SOCKET RUBBER RING JOINTS.
    - ALL PE PIPE SHALL BE PERFORM MINIMUM PRESSURE RATED WITH BUTT WELDED, WELD BEADS SHALL BE REMOVED TO PROVIDE A SMOOTH BORE.
    - ALL NON-METALLIC PIPES ARE TO HAVE TRACER WIRE FITTED TO COUNCIL STANDARDS.
    - PIPES SHALL BE BEDDED AND SURROUNDED TO 150MM ABOVE THE PIPE SOFFIT WITH SAND OR AP20. METAL DETECTOR TAPE PRINTED WITH WATER PIPE SYMBOL SHALL BE LAD 150MM ABOVE ALL WATER MAINS.
    - A YELLOW ROSSELLES TRIANGLE WITH CAT'S EYE POINTING TO FH SHALL BE PAINTED IN THE CENTRE OF ALL SEALED ROADS, WHERE HYDRANTS ARE LOCATED BEHIND KERBS, THE KERB SHALL ALSO BE PAINTED YELLOW.
    - ALL VALVES TO BE MARKED WITH SAWCUT KERB AND BLUE PAINT, ALL VALVES SHALL BE MARKED WITH APPROVED CONCRETE MARKER POST.
    - ALL DESIGN AND CONSTRUCTION TO BE IN ACCORDANCE WITH THE DESIGNING AND CONSTRUCTION OF PIPE OR SIMILAR APPROVED BY THE ENGINEER.

Rev	Description	By	Date
B	FOR CONSENT	DP	03/26
A	FOR REVIEW	DP	01/26

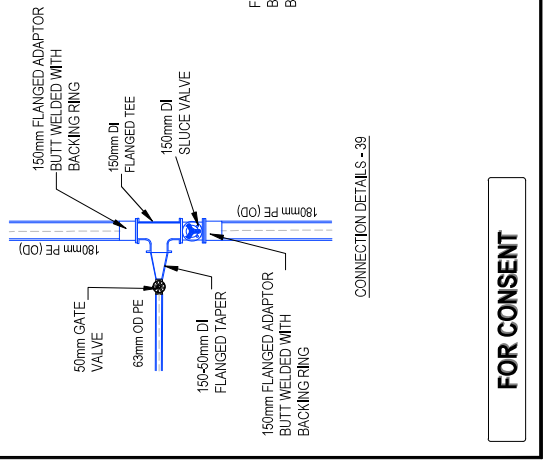
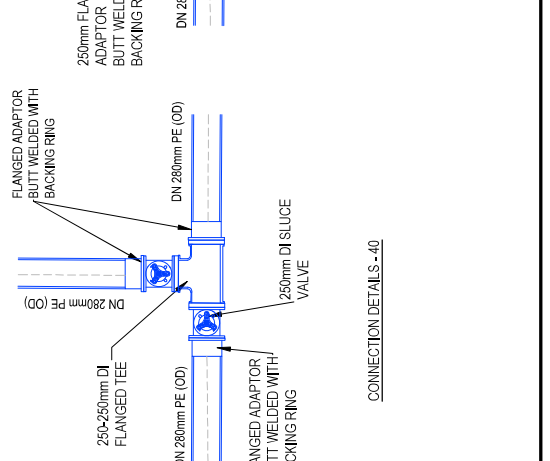
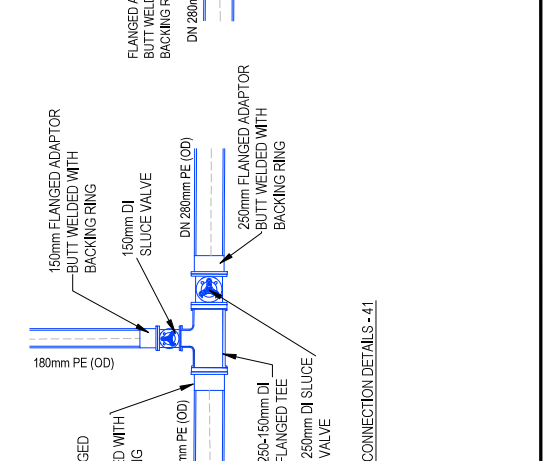
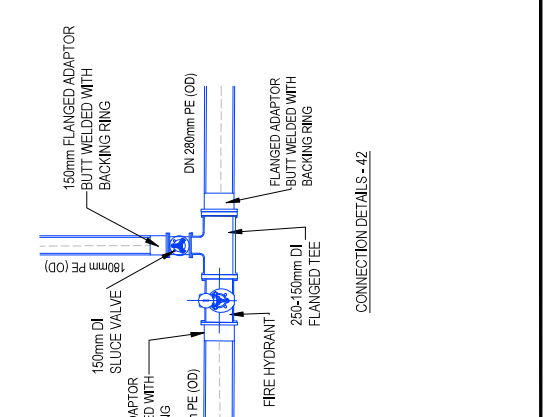
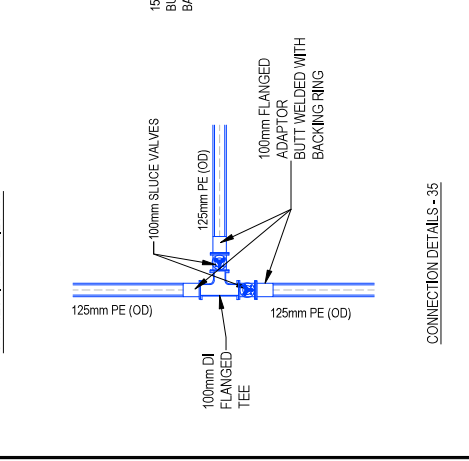
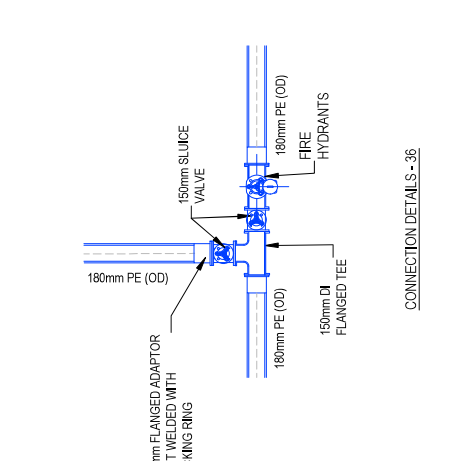
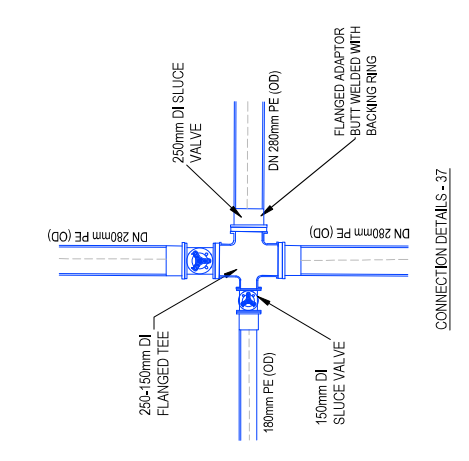
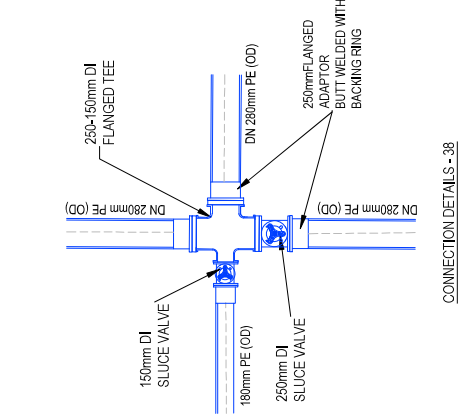
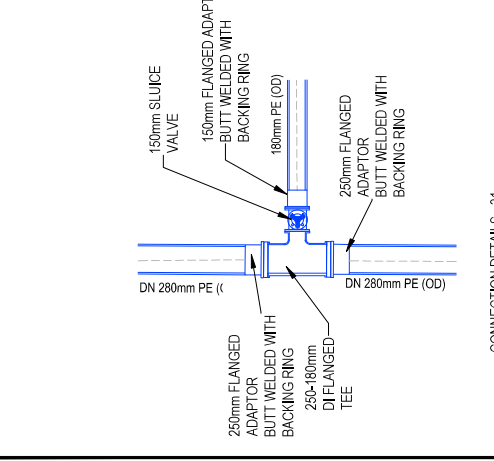
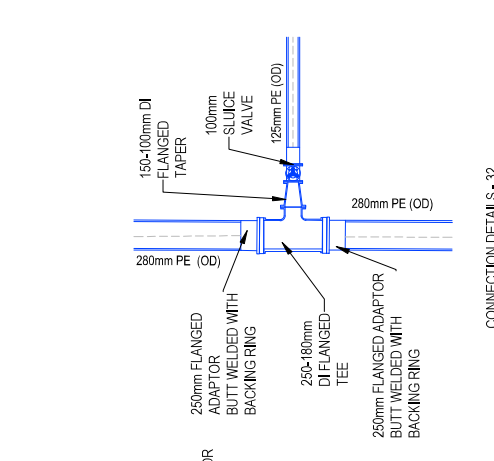
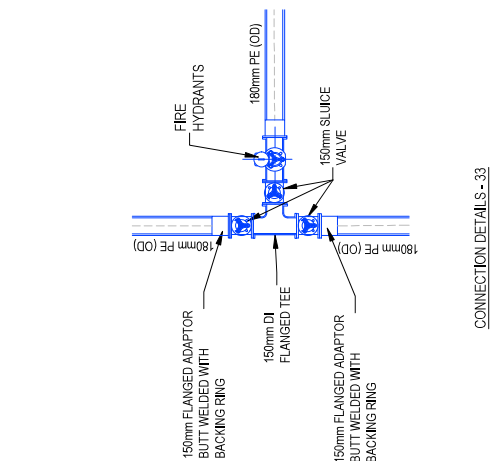
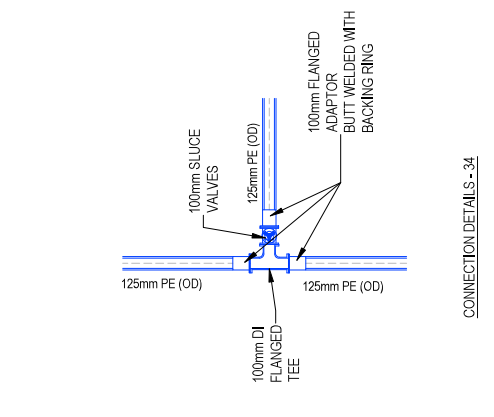
Checked	CS	01/26
Survey	MAVEN	05/2025
Design	DP	01/26
Drawn	DP	01/26
Checked	CS	01/26

**Maven Bay of Plenty**  
 118 Cameron Street, Tauranga  
 www.maven.co.nz  
 07 778 8888

**Project**  
**WAIRAKEI SOUTH FTA090 DEVELOPMENT**  
**BELL ROAD, PAPAMOA**  
**FOR BELL ROAD LIMITED PARTNERSHIP**

**Title**  
**PROPOSED WATER SUPPLY CONNECTION DETAILS**

Project no.	BOP0749
Scale	1:50 @ A3
Client	BOP/PLC/SL/DWG
Drawing no.	CS610-4
Rev	B



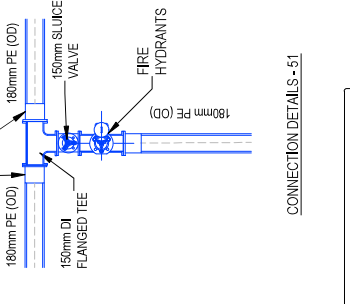
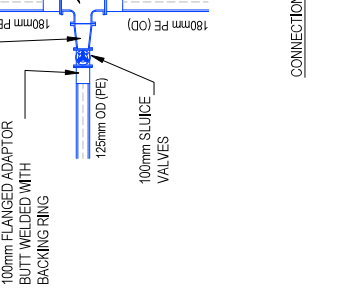
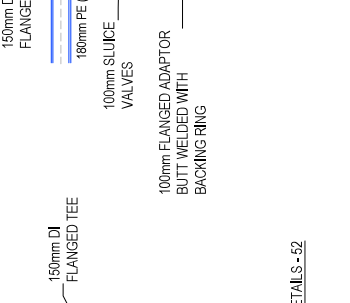
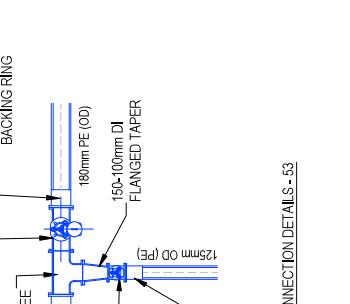
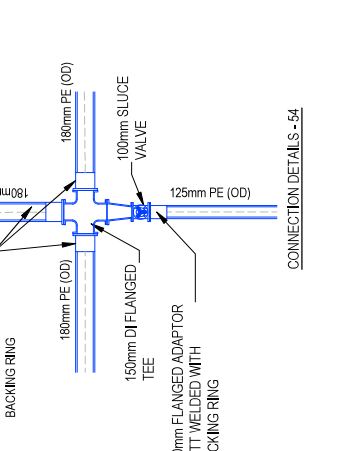
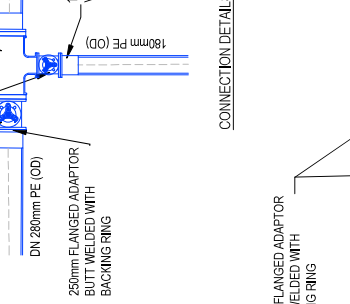
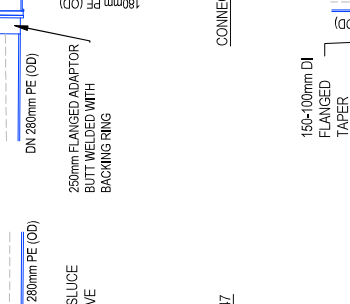
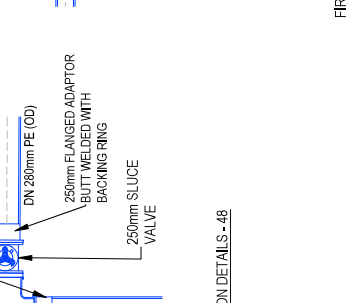
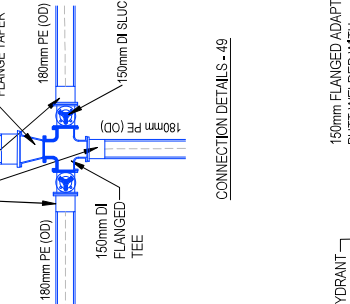
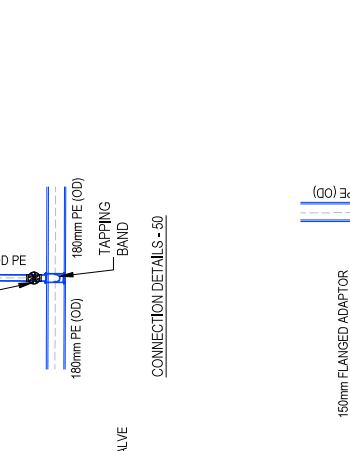
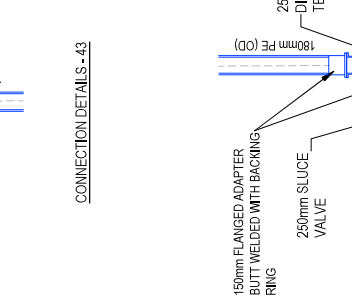
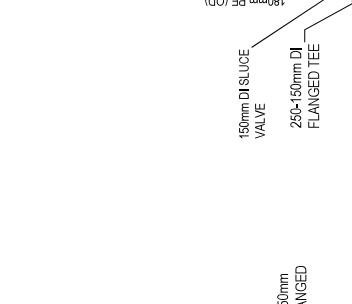
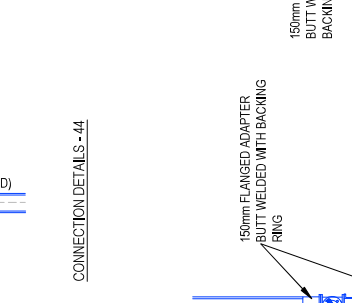
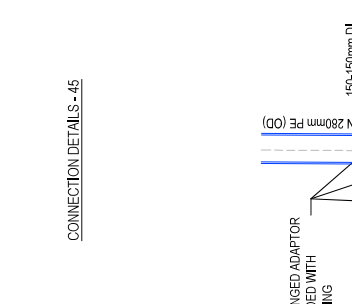
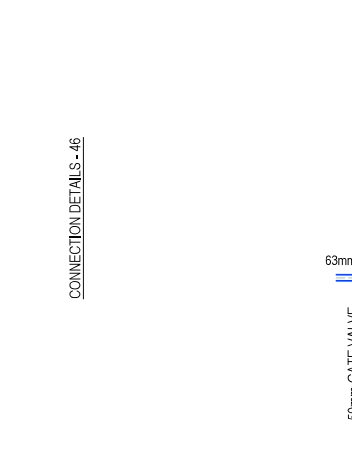
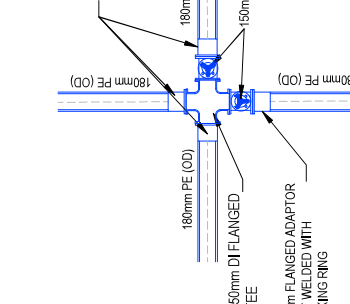
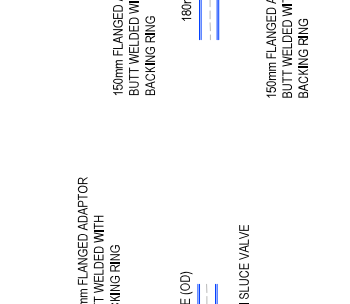
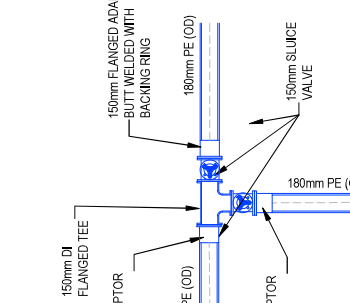
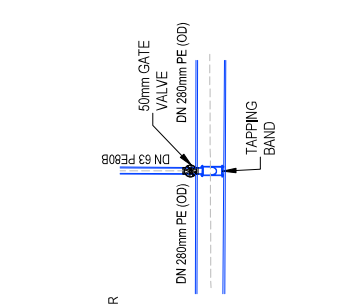
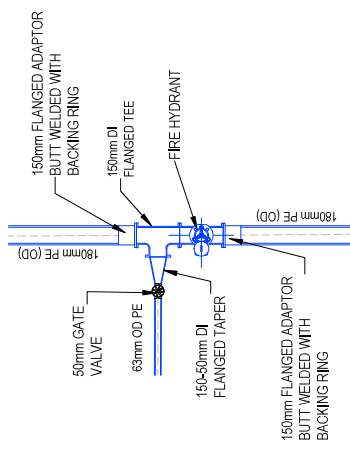
NOTES  
 1. ALL WORKS TO BE IN ACCORDANCE WITH THE WESTERN BAY OF PLENTY DISTRICT COUNCIL DEVELOPMENT CODE.  
 2. MINIMUM COVER SHALL BE:  
 ROADS, FOOTPATHS, CROSSINGS: 1000MM  
 BERMES 800MM  
 SERVICE CONNECTIONS: 350MM  
 3. WATERWAYS LAD ACROSS ROADS SHALL BE BACKFILLED WITH HARDRILL COMPACTED IN 200MM LAYERS ABOVE THE EMBEDMENT MATERIAL.  
 4. ALL PE PIPE SHALL BE PIPED TO MINIMUM PRESSURE RATED WITH SPOUT AND SOCKET RUBBER RING JOINTS.  
 5. ALL PE PIPE SHALL BE PIPED TO MINIMUM PRESSURE RATED WITH BUTT WELDED, WELD BEADS SHALL BE REMOVED TO PROVIDE A SMOOTH BORE.  
 6. ALL NON-METALLIC PIPES ARE TO HAVE TRACER WIRE FITTED TO COUNCIL STANDARDS.  
 7. PIPES SHALL BE BEDDED AND SURROUNDED TO 150MM ABOVE THE PIPE SOFFIT WITH SAND OR AP20.  
 8. METAL DETECTOR TAPE PRINTED WITH WATER PIPE WARNING SHALL BE LAD 150MM ABOVE ALL WATER MAINS.  
 9. A YELLOW ISOSCELES TRIANGLE WITH CAT'S EYE POINTING TO FH SHALL BE PAINTED IN THE CENTRE OF ALL SEALED ROADS, WHERE HYDRANTS ARE LOCATED BEHIND KERBS. THE KERB SHALL ALSO BE PAINTED YELLOW.  
 10. ALL VALVES TO BE MARKED WITH SAWCUT KERB AND BLUE PAINT. ALL VALVES SHALL BE MARKED WITH APPROVED CONCRETE MARKER POST.  
 11. ALL WORKS TO BE IN ACCORDANCE WITH THE DEVELOPMENT CODE.  
 12. TAPES OR SIMILAR APPROVED BY THE ENGINEER.

Rev	Description	By	Date
B	FOR CONSENT	DP	03/26
A	FOR REVIEW	DP	01/26

Survey	MAVEN	Date	05/2025
Design	DP	DP	01/26
Drawn	DP	DP	01/26
Checked	CS	CS	01/26

Project	
<b>WAIRAKEI SOUTH FTA090 DEVELOPMENT</b>	
<b>BELL ROAD, PAPAMOA FOR BELL ROAD LIMITED PARTNERSHIP</b>	
Title: <b>PROPOSED WATER SUPPLY CONNECTION DETAILS</b>	
Project no.	BOP0749
Scale	1:50 @ A3
Client	BOPWATER.CO.NZ
Drawing no.	CS60-5
Rev	B



FOR CONSENT