

NOTES

1. ALL WORKS TO BE IN ACCORDANCE WITH WESTERN BAY OF PLENTY DEVELOPMENT CODE.
2. CO-ORDINATES IN TERMS OF BAY OF PLENTY 2000.
3. REDUCED LEVELS ARE IN TERMS OF NVD 2016. IT IS THE CONTRACTORS RESPONSIBILITY TO LOCATE ALL SERVICES THAT MAY BE AFFECTED BY THEIR OPERATIONS.
4. IT IS THE CONTRACTORS RESPONSIBILITY TO LOCATE ANY UNDERGROUND SERVICES PRIOR TO THE COMMENCEMENT OF WORKS.
5. MINIMUM COVER FOR POWER, WATER AND WASTEWATER SHALL BE:
6. MINIMUM COVER FOR UTILITY SERVICES AS SHOWN ON TYPICAL SERVICE TRENCH DETAIL.
7. UTILITY SERVICES SHALL BE INSTALLED IN ACCORDANCE WITH PROVIDERS SPECIFICATION.
8. SERVICE TRENCHES UNDER ROADS, ACCESSWAYS AND PATHS SHALL BE HARDFILLED BACKFILLED AND COMPACTED IN 200MM LAYERS.
9. WORK AREAS SHALL BE REINSTATED TO AN EQUAL STANDARD BEFORE WORK STARTED.
10. UTILITY SERVICES SHALL MAINTAIN MINIMUM CLEARANCES TO STORMWATER AND WASTEWATER ASSETS.

LEGEND

---	EX B'DY
---	PROP B'DY
---	STAGE BOUNDARY
---	EX TELECOM
---	EX POWER
---	EX GAS
---	EX WATER SUPPLY
---	EX WATER SUPPLY
---	RR STORMWATER
---	RR WASTEWATER
---	RR WASTEWATER RISING MAIN
---	RR TRENCH CROSSING
---	RR TRENCH TYPE 1
---	RR TRENCH TYPE 2
---	RR WW PUMP STATION

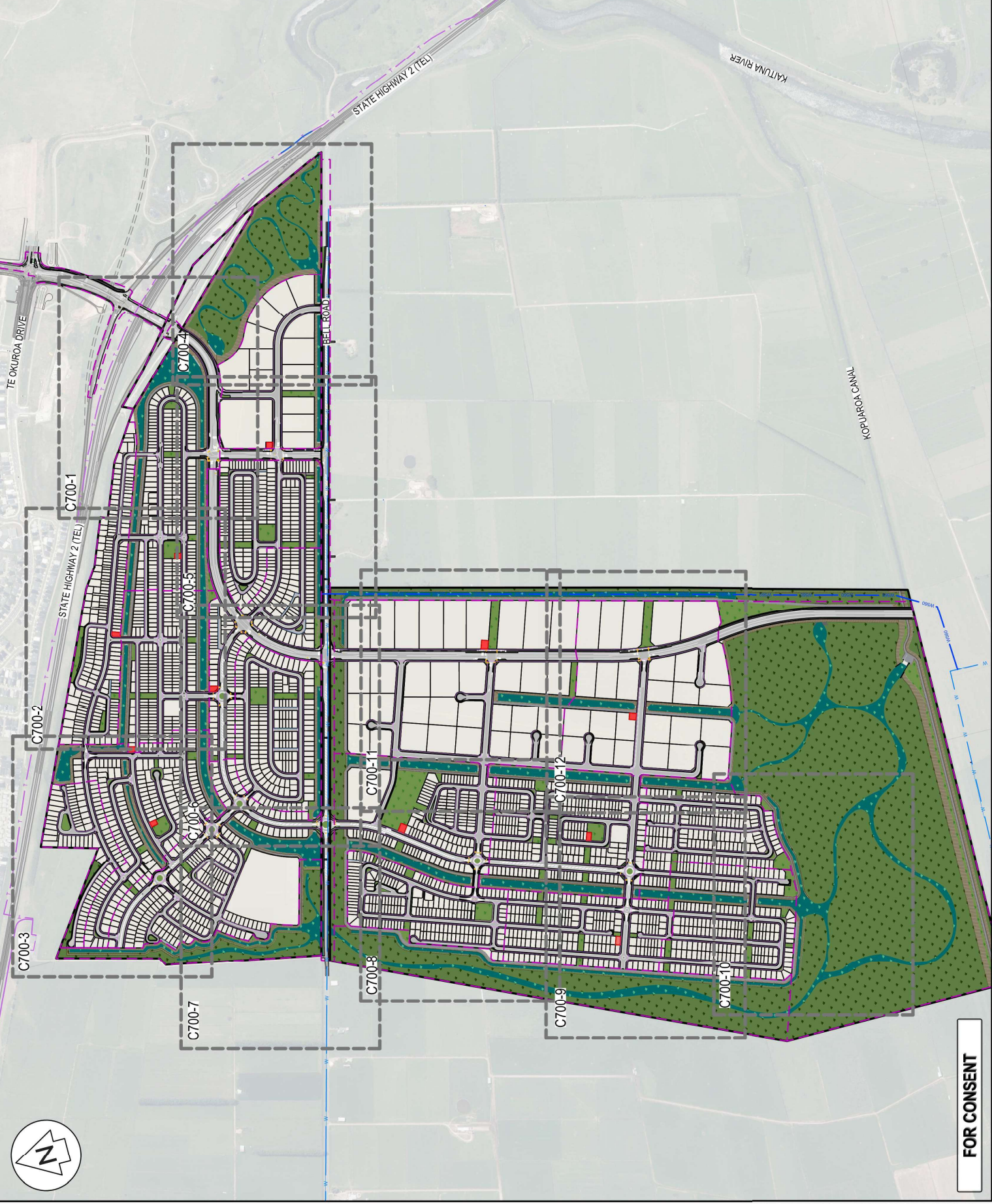
B	FOR CONSENT	DP	03/26
A	FOR REVIEW	JAD	12/2025
Rev	Description	By	Date
		MAVEN	05/2025
		JAD	12/2025
		JAD	12/2025
		CS	12/2025

Maven Bay of Plenty
 111 Cameron Street, Tauranga
 New Zealand

Project
WAIRAKEI SOUTH FTA090
DEVELOPMENT
BELL ROAD, PAPAMOA
FOR BELL ROAD
LIMITED PARTNERSHIP

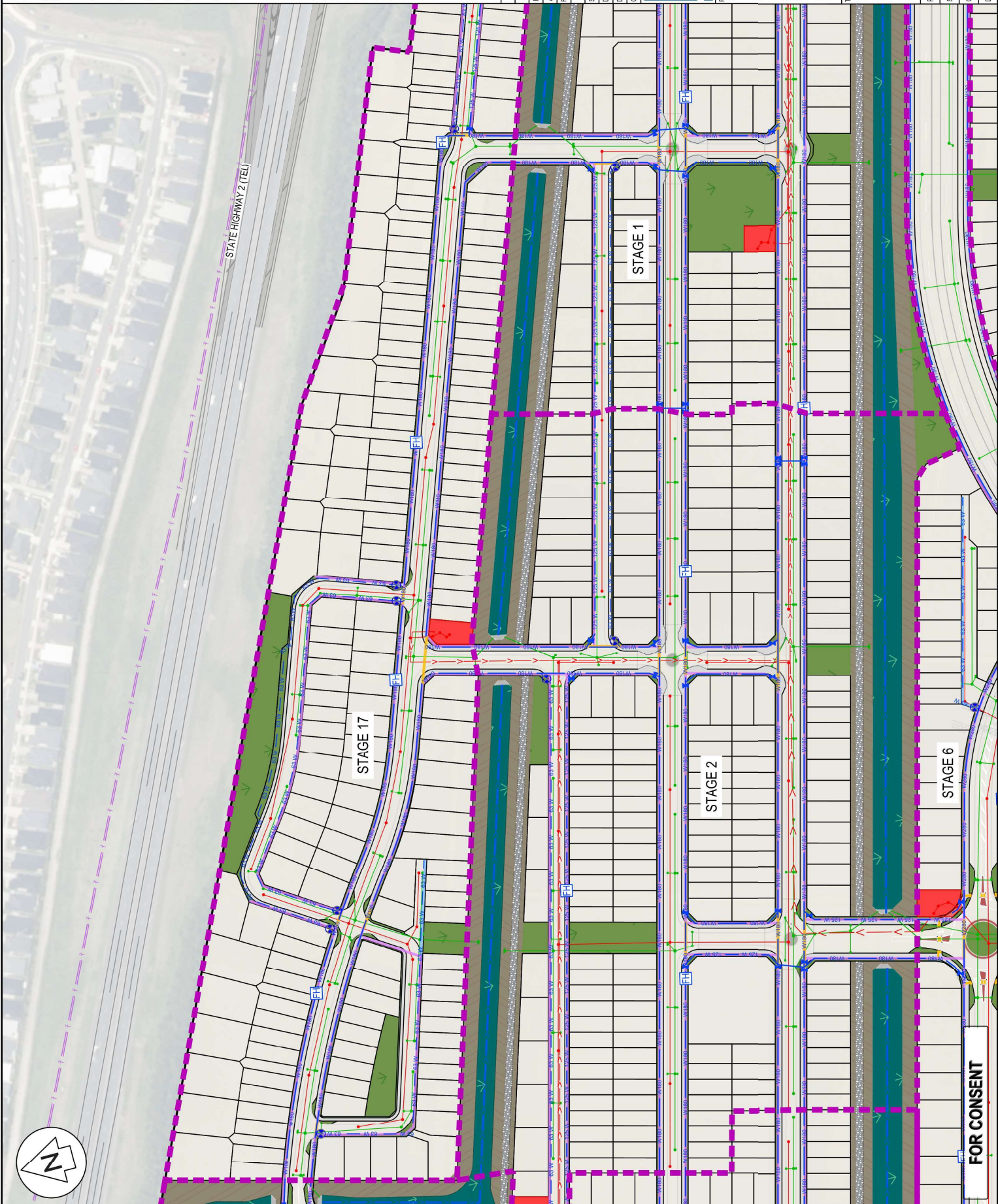
Title
PROPOSED
UTILITIES
OVERVIEW PLAN

Project no.	BOP0749
Scale	1:10000 @ A3
Clad file	Bop0749-cro.dwg
Drawing no.	C700-0
Rev	B



ORIGINAL SIZE: A3

FOR CONSENT



- NOTES**
1. ALL WORKS TO BE IN ACCORDANCE WITH WESTERN BAY OF PLENTY DEVELOPMENT CODE.
 2. CO-ORDINATES IN TERMS OF BAY OF PLENTY 2000.
 3. REDUCED LEVELS ARE IN TERMS OF NZVD 2016. IT IS THE CONTRACTOR'S RESPONSIBILITY TO VERIFY ALL SERVICES THAT MAY BE AFFECTED BY THEIR OPERATIONS.
 4. IT IS THE CONTRACTOR'S RESPONSIBILITY TO LOCATE ANY UNDERGROUND SERVICES PRIOR TO THE COMMENCEMENT OF WORKS.
 5. MINIMUM COVER FOR STORMWATER AND WASTEWATER SHALL BE:
ROADS, FOOTPATHS, CROSSINGS: 900MM
MINIMUM COVER FOR UTILITY SERVICES AS SHOWN ON TYPICAL SERVICE TRENCH DETAIL.
 7. UTILITY SERVICES SHALL BE INSTALLED IN ACCORDANCE WITH PROVIDER SPECIFICATION, AND SHALL BE MARKED BY REFLECTORISERS AND PATHS SHALL BE MARKED BY REFLECTORISERS AND COMPACTED IN 200MM LAYERS.
 9. WORK AREAS SHALL BE REINSTATED TO AN EQUAL STANDARD BEFORE WORK STARTED.
 10. UTILITY SERVICES SHALL MAINTAIN MINIMUM CLEARANCES TO STORMWATER AND WASTEWATER ASSETS.

LEGEND

---	EX BODY
---	PROP BODY
---	STAGE BOUNDARY
---	EX TELECOM
---	EX POWER
---	EX GAS
---	EX WATER SUPPLY
---	EX STORMWATER
---	EX WASTEWATER
---	EX RISING MAIN
---	EX TRENCH CROSSING
---	EX TRENCH TYPE 1
---	EX TRENCH TYPE 2
---	EX RWV PUMP STATION

Rev	Description	By	Date
B	FOR CONSENT	DP	03/26
A	FOR REVIEW	JAD	12/2025

Survey	MAVEN	Date	06/2025
Design	JAD	Date	12/2025
Drawn	JAD	Date	12/2025
Checked	CS	Date	12/2025

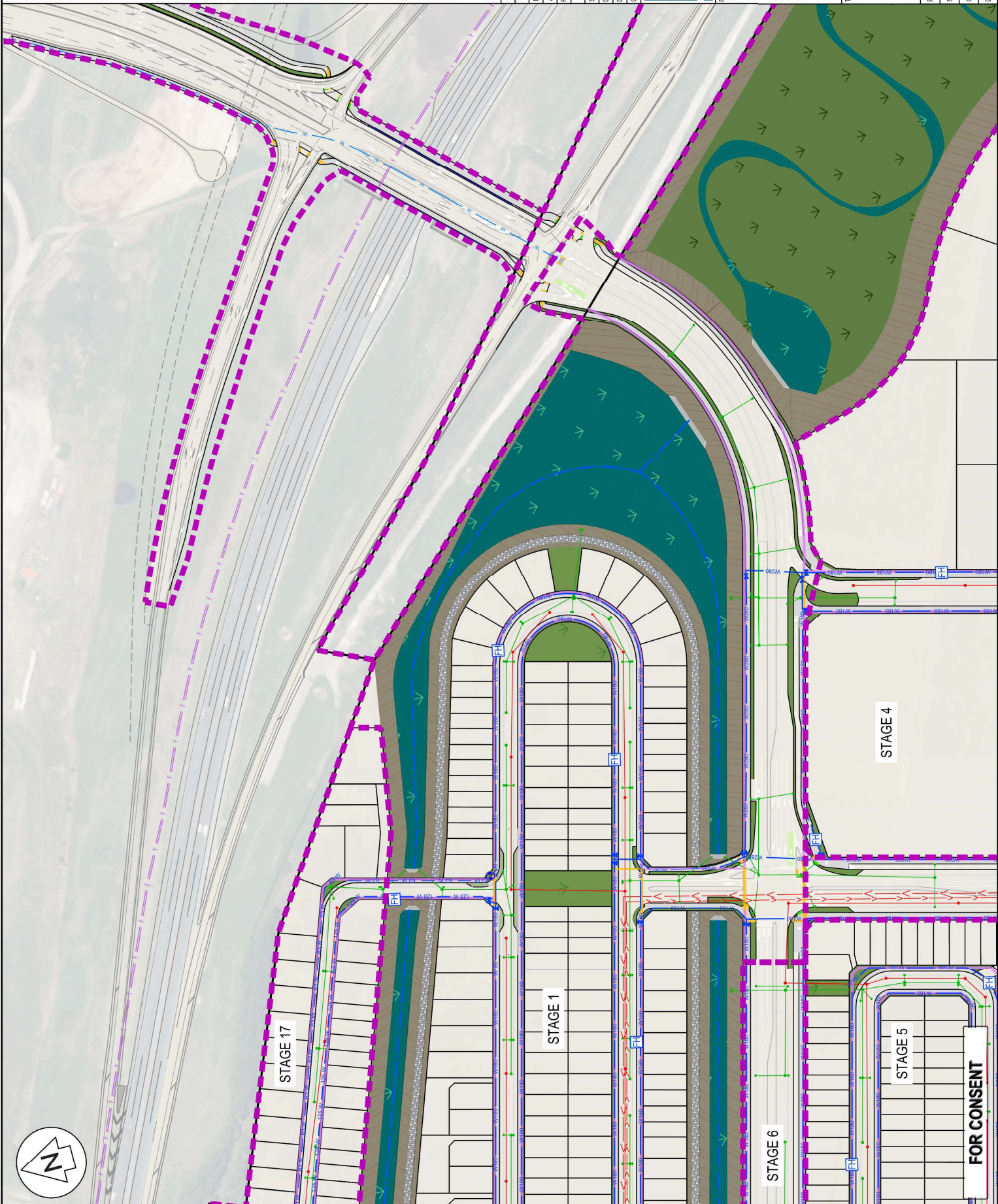
Maven Bay of Plenty
 111 Cameron Street, Tauranga
 www.maven.co.nz

Project
 WAIRAKEI SOUTH FTA090
 DEVELOPMENT
 BELL ROAD, PAPAMOA
 FOR BELL ROAD
 LIMITED PARTNERSHIP

Title
 PROPOSED
 UTILITIES
 LAYOUT PLAN

Project no.	BOP0749
Scale	1:2000 @ A3
Card file	Bopwpc-cro02w
Drawing no.	C700-2
Rev	B

FOR CONSENT



- NOTES**
1. ALL WORKS TO BE IN ACCORDANCE WITH WESTERN BAY OF PLENTY DEVELOPMENT CODE.
 2. COORDINATES IN TERMS OF BAY OF PLENTY 2000.
 3. ENGINEERS SHALL BE RESPONSIBLE TO LOCATE ALL SERVICES THAT MAY BE AFFECTED BY THEIR OPERATIONS.
 4. IT IS THE CONTRACTORS RESPONSIBILITY TO LOCATE ANY UNDERGROUND SERVICES PRIOR TO THE COMMENCEMENT OF WORKS.
 5. MINIMUM COVER FOR STORMWATER AND WASTEWATER SHALL BE:
 6. MINIMUM COVER FOR UTILITY SERVICES AS SHOWN ON TYPICAL SERVICE TRENCH DETAIL.
 7. ALL SERVICES SHALL BE INSTALLED IN ACCORDANCE WITH PROVIDERS SPECIFICATION.
 8. SERVICE TRENCHES UNDER ROADS, ACCESSWAYS AND PATHS SHALL BE HANDFILLED BACKFILLED AND COMPACTED IN 200MM LAYERS.
 9. WORK AREAS SHALL BE REINSTATED TO AN EQUAL STANDARD BEFORE WORK STARTED.
 10. UTILITY SERVICES SHALL MAINTAIN MINIMUM CLEARANCES TO STORMWATER AND WASTEWATER ASSETS.

LEGEND

- EX B'DY
- PROP B'DY
- STAGE BOUNDARY
- EX TELECOM
- EX POWER
- EX GAS
- EX WATER SUPPLY
- EX STORMWATER
- EX WASTEWATER
- RR WASTEWATER
- RR WASTEWATER
- RR WASTEWATER
- RR TRENCH CROSSING
- RR TRENCH TYPE 1
- RR TRENCH TYPE 2
- RR WW PUMP STATION

FOR CONSENT	DP	03/26	
FOR REVIEW	JAD	12/2025	
Rev	Description	By	Date
Survey	MAVEN		05/2025
Design	JAD		12/2025
Drawn	JAD		12/2025
Checked	CS		12/2025

Maven Bay of Plenty
 111 Cameron Street, Tauranga
 www.maven.co.nz
 07 778 8888

Project
WAIRAKEI SOUTH FTA090
DEVELOPMENT
BELL ROAD, PAPAMOA
FOR BELL ROAD
LIMITED PARTNERSHIP

Title
PROPOSED
UTILITIES
LAYOUT PLAN

Project no. BOP0749
Scale 1:2000 @ A3
Client file Bopwpc-cro.dwg

Drawing no. C700-1
Rev B

STAGE 17

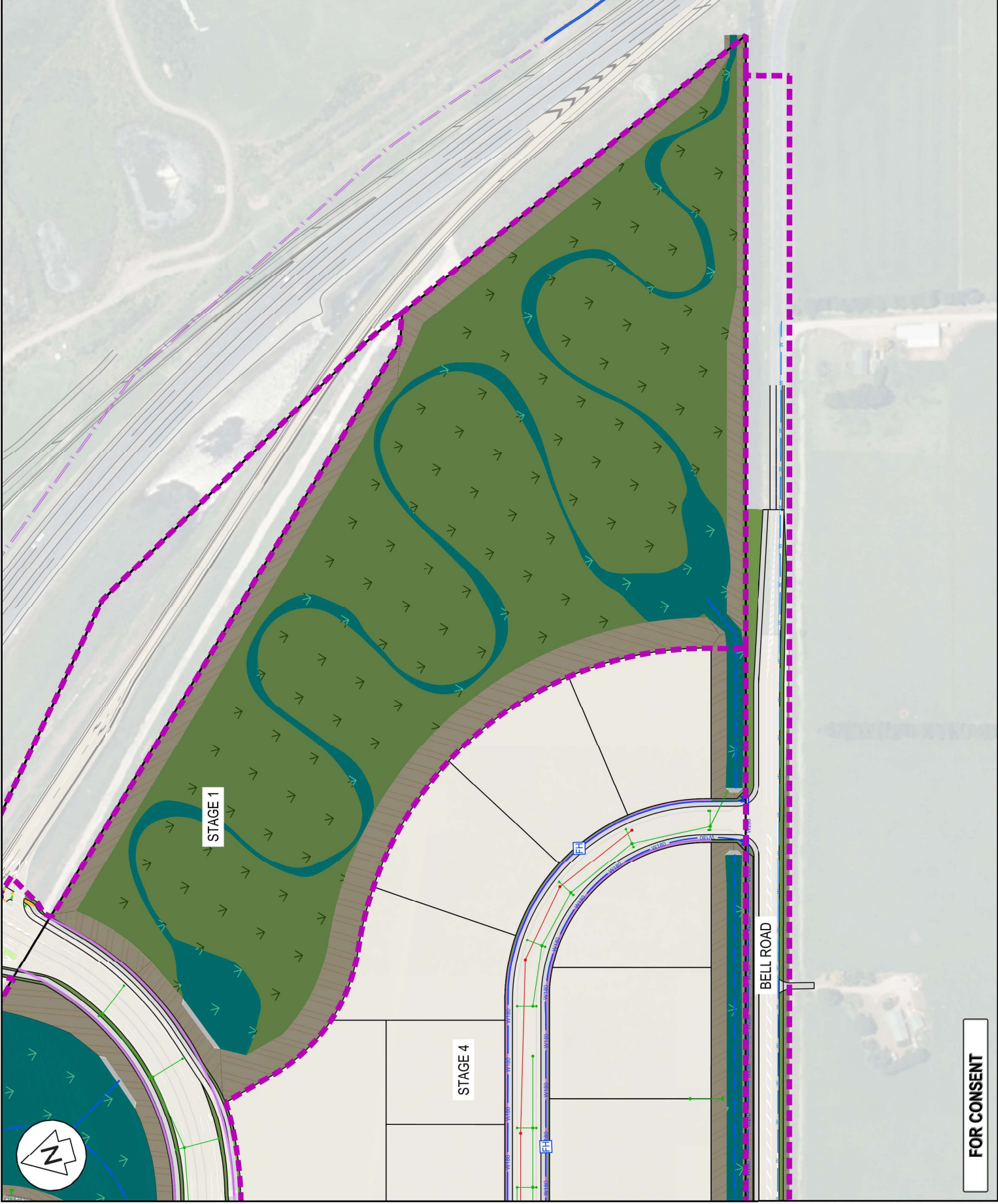
STAGE 1

STAGE 5

STAGE 6

STAGE 4

FOR CONSENT



- NOTES**
1. ALL WORKS TO BE IN ACCORDANCE WITH WESTERN BAY OF PLENTY DEVELOPMENT CODE.
 2. CO-ORDINATES IN TERMS OF BAY OF PLENTY 2000.
 3. REDUCED LEVELS ARE IN TERMS OF NZVD 2016. THE UNITS ARE METRES. ALL SERVICES THAT MAY BE AFFECTED BY THEIR OPERATIONS.
 4. IT IS THE CONTRACTORS RESPONSIBILITY TO LOCATE ANY UNDERGROUND SERVICES PRIOR TO THE COMMENCEMENT OF WORKS.
 5. MINIMUM COVER FOR STORMWATER AID WASTEWATER SHALL BE:
ROADS, FOOTPATHS, CROSSINGS: 900MM
MINIMUM COVER FOR UTILITY SERVICES AS SHOWN ON TYPICAL SERVICE TRENCH DETAIL.
 7. UTILITY SERVICES SHALL BE INSTALLED IN ACCORDANCE WITH THE SPECIFICATION.
 8. SERVICE TRENCHES UNDER ROADS, ACCESSWAYS AND PATHS SHALL BE HERDFILLED BACKFILLED AND COMPACTED IN 200MM LAYERS.
 9. WORK AREAS SHALL BE REINSTATED TO AN EQUAL STANDARD BEFORE WORK STARTED.
 10. UTILITY SERVICES SHALL MAINTAIN MINIMUM CLEARANCES TO STORMWATER AND WASTEWATER ASSETS.

LEGEND

- EX B'DY
- PROP B'DY
- STAGE BOUNDARY
- EX TELECOM
- EX POWER
- EX GAS
- EX WATER SUPPLY
- PR WATER SUPPLY
- PR STORMWATER
- PR WASTEWATER
- PR WASTEWATER RISING MAIN
- PR TRENCH CROSSING
- PR TRENCH TYPE 1
- PR TRENCH TYPE 2
- PR WW PUMP STATION

Rev	Description	By	Date
B	FOR CONSENT	DP	03/26
A	FOR REVIEW	JAD	12/20/25

Survey	MAVEN	Date	05/20/25
Design	JAD	Date	12/20/25
Drawn	JAD	Date	12/20/25
Checked	CS	Date	12/20/25

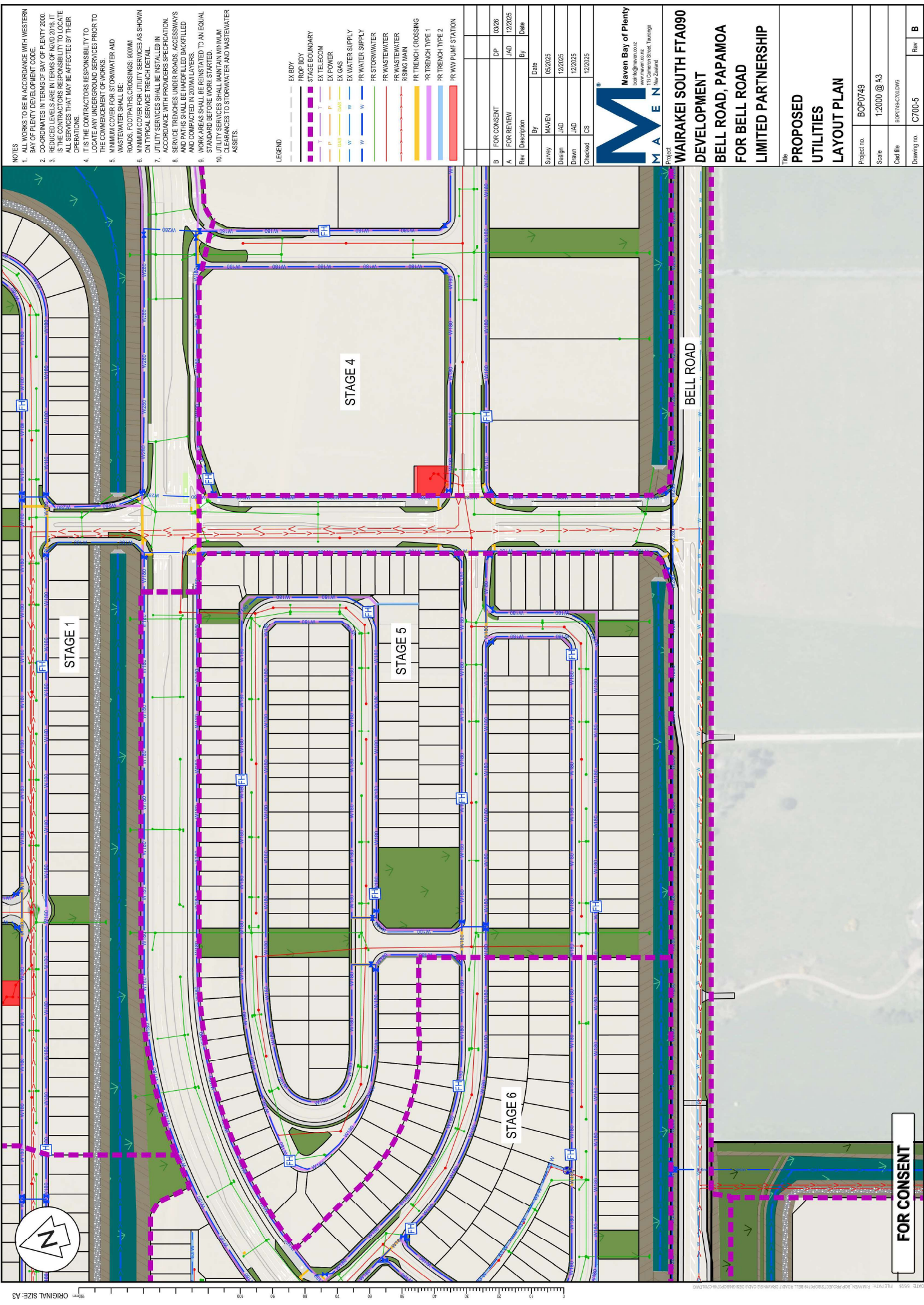
Maven Bay of Plenty
 111 Cameron Street, Tauranga
 New Zealand

Project
WAIRAKEI SOUTH FTA090
DEVELOPMENT
BELL ROAD, PAPAMOA
FOR BELL ROAD
LIMITED PARTNERSHIP

Title	
PROPOSED UTILITIES LAYOUT PLAN	
Project no.	BOP0749
Scale	1:2000 @ A3
Card file	BOP0749-C0700-4
Drawing no.	C700-4
Rev	B

ORIGINAL SIZE: A3

FOR CONSENT



- NOTES**
1. ALL WORKS TO BE IN ACCORDANCE WITH WESTERN BAY OF PLENTY DEVELOPMENT CODE.
 2. CO-ORDINATES IN TERMS OF BAY OF PLENTY 2000.
 3. REDUCED LEVELS ARE IN TERMS OF NZVD 2016. IT IS THE CONTRACTORS RESPONSIBILITY TO LOCATE EXISTING UTILITIES THAT MAY BE AFFECTED BY THEIR OPERATIONS.
 4. IT IS THE CONTRACTORS RESPONSIBILITY TO LOCATE ANY UNDERGROUND SERVICES PRIOR TO THE COMMENCEMENT OF WORKS.
 5. MINIMUM COVER FOR STORMWATER AID WASTEWATER SHALL BE:
 - ROADS, FOOTPATHS, CROSSINGS: 900MM
 - MINIMUM COVER FOR UTILITY SERVICES AS SHOWN ON TYPICAL SERVICE TRENCH DETAIL.
 7. UTILITY SERVICES SHALL BE INSTALLED IN ACCORDANCE WITH PROVIDERS SPECIFICATION. SERVICES SHALL BE INSTALLED IN ACCESSWAYS AND COMPACTED IN NORMAL LAYERS.
 8. WORK AREAS SHALL BE REINSTATED TO AN EQUAL STANDARD BEFORE WORK STARTED.
 10. UTILITY SERVICES SHALL MAINTAIN MINIMUM CLEARANCES TO STORMWATER AND WASTEWATER ASSETS.

- LEGEND**
- EX BDY
 - PROP BDY
 - STAGE BOUNDARY
 - EX TELECOM
 - EX POWER
 - EX GAS
 - EX WATER SUPPLY
 - PR WATER SUPPLY
 - PR STORMWATER
 - PR WASTEWATER
 - PR WASTEWATER RISING MAIN
 - PR TRENCH CROSSING
 - PR TRENCH TYPE 1
 - PR TRENCH TYPE 2
 - PR RW PUMP STATION

Rev	Description	By	Date
B	FOR CONSENT	DP	03/26
A	FOR REVIEW	JAD	12/20/25

By	Date	
Survey	MAVEN	05/20/25
Design	JAD	12/20/25
Drawn	JAD	12/20/25
Checked	CS	12/20/25

Maven Bay of Plenty
 111 Cameron Street, Tauranga
 www.maven.co.nz
 New Zealand

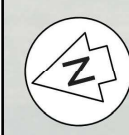
Project
WAIRAKEI SOUTH FTA090 DEVELOPMENT
BELL ROAD, PAPAMOA
FOR BELL ROAD LIMITED PARTNERSHIP

Title
PROPOSED UTILITIES LAYOUT PLAN

Project no.	BOP0749
Scale	1:2000 @ A3
Client file	Bop0749-0749
Drawing no.	C700-5
Rev	B

ORIGINAL SIZE: A3

FOR CONSENT



- NOTES**
1. ALL WORKS TO BE IN ACCORDANCE WITH WESTERN BAY OF PLENTY DEVELOPMENT CODE
 2. CO-ORDINATES IN TERMS OF BAY OF PLENTY 2000.
 3. REDUCED LEVELS ARE IN TERMS OF NZVD 2016. IT IS THE CONTRACTOR'S RESPONSIBILITY TO VERIFY ALL SERVICES THAT MAY BE AFFECTED BY THEIR OPERATIONS.
 4. IT IS THE CONTRACTOR'S RESPONSIBILITY TO LOCATE ANY UNDERGROUND SERVICES PRIOR TO THE COMMENCEMENT OF WORKS.
 5. MINIMUM COVER FOR STORMWATER AND WASTEWATER SHALL BE:
 - ROADS, FOOTPATHS, CROSSINGS: 900MM
 - MINIMUM COVER FOR UTILITY SERVICES AS SHOWN ON TYPICAL SERVICE TRENCH DETAIL
 7. UTILITY SERVICES SHALL BE INSTALLED IN ACCORDANCE WITH THE RELEVANT STANDARDS. SERVICE TRENCHES UNDER PAVEMENTS, ACCESSWAYS AND PATHS SHALL BE HANDPAVED BACKFILLED AND COMPACTED IN 200MM LAYERS.
 9. WORK AREAS SHALL BE REINSTATED TO AN EQUAL STANDARD BEFORE WORK STARTED.
 10. UTILITY SERVICES SHALL MAINTAIN MINIMUM CLEARANCES TO STORMWATER AND WASTEWATER ASSETS.

LEGEND

- EX B'DY
- PROP B'DY
- STAGE BOUNDARY
- EX TELECOM
- EX POWER
- EX GAS
- EX WATER SUPPLY
- EX WATER SUPPLY
- RR STORMWATER
- RR WASTEWATER
- RR WASTEWATER RISING MAIN
- RR TRENCH CROSSING
- RR TRENCH TYPE 1
- RR TRENCH TYPE 2
- RR WW PUMP STATION

Rev	Description	By	Date
B	FOR CONSENT	DP	03/26
A	FOR REVIEW	JAD	12/20/25

Survey	MAVEN	Date	05/20/25
Design	JAD	12/20/25	
Drawn	JAD	12/20/25	
Checked	CS	12/20/25	

Maven Bay of Plenty
 111 Cameron Street, Tauranga
 www.maven.co.nz

Project
WAIRAKEI SOUTH FTA090 DEVELOPMENT
BELL ROAD, PAPAMOA
FOR BELL ROAD LIMITED PARTNERSHIP

Title
PROPOSED UTILITIES LAYOUT PLAN

Project no.	BOP0749
Scale	1:2000 @ A3
Client file	Bopwpc-crowds
Drawing no.	C700-7
Rev	B

FOR CONSENT

NOTES

- WORKS TO BE IN ACCORDANCE WITH WESTERN BAY OF PLENTY DEVELOPMENT CODE
- COORDINATES IN TERMS OF BAY OF PLENTY 2000
- REDUCED LEVELS ARE IN TERMS OF NZVD 2016. IT IS THE CONTRACTORS RESPONSIBILITY TO LOCATE ALL SERVICES THAT MAY BE AFFECTED BY THEIR OPERATIONS.
- IT IS THE CONTRACTORS RESPONSIBILITY TO LOCATE ANY UNDERGROUND SERVICES PRIOR TO THE COMMENCEMENT OF WORKS.
- MINIMUM COVER FOR STORMWATER AND WASTEWATER SERVICES AS SHOWN
- MINIMUM COVER FOR UTILITY SERVICES AS SHOWN ON TYPICAL SERVICE TRENCH DETAIL
- UTILITY SERVICES SHALL BE INSTALLED IN ACCORDANCE WITH PROVIDERS SPECIFICATION, AND PATHS SHALL BE HARD FILLED, BACK FILLED AND COMPACTED IN 200MM LAYERS.
- WORK AREAS SHALL BE REINSTATED TO AN EQUAL STANDARD BEFORE WORK STARTED.
- UTILITY SERVICES SHALL MAINTAIN MINIMUM CLEARANCES TO STORMWATER AND WASTEWATER ASSETS.

LEGEND

---	EX B'DY
---	PROP B'DY
---	STAGE BOUNDARY
---	EX TELECOM
---	EX POWER
---	EX GAS
---	EX WATER SUPPLY
---	EX STORMWATER
---	RR WASTEWATER
---	RR WASTEWATER RISING MAIN
---	RR TRENCH TYPE 1
---	RR TRENCH TYPE 2
---	RR WW PUMP STATION

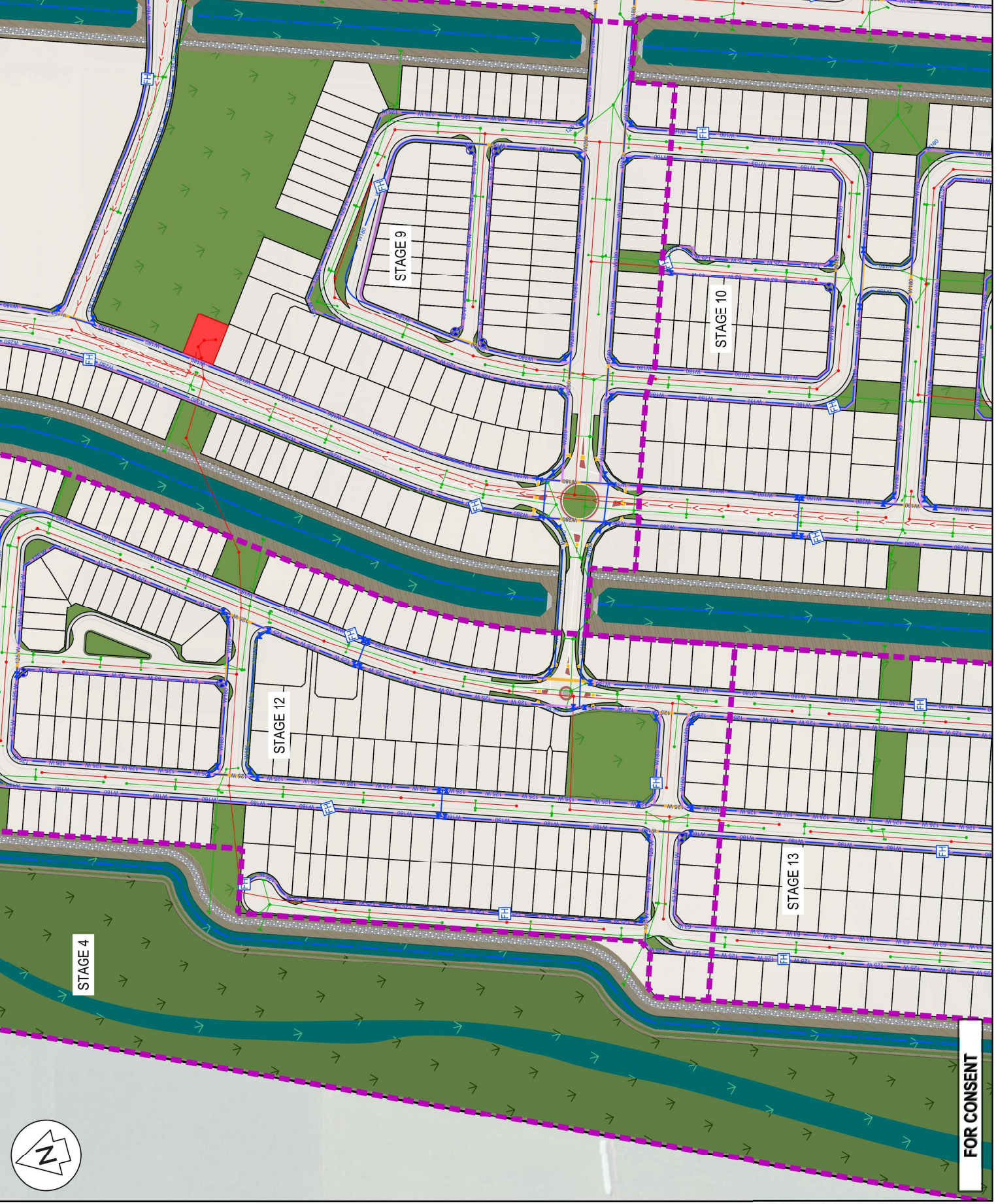
By	Date
Survey	M/AVEN 05/2025
Design	JAD 12/2025
Drawn	JAD 12/2025
Checked	CS 12/2025

FOR CONSENT	DP	03/26
FOR REVIEW	JAD	12/2025

Maven Bay of Plenty
 111 Cameron Street, Tauranga
 New Zealand

Project
WAIRAKEI SOUTH FTA090 DEVELOPMENT
BELL ROAD, PAPAMOOA
FOR BELL ROAD LIMITED PARTNERSHIP

Title	
PROPOSED UTILITIES LAYOUT PLAN	
Project no.	BOP0749
Scale	1:2000 @ A3
Client file	Bopwre-cro.dwg
Drawing no.	C700-8
Rev	B



FOR CONSENT

- NOTES**
- ALL WORKS TO BE IN ACCORDANCE WITH WESTERN BAY OF PLENTY DEVELOPMENT CODE
 - COORDINATES IN TERMS OF BAY OF PLENTY 2000
 - REDUCED LEVELS ARE IN TERMS OF NZD 2016. IT IS THE CONTRACTORS RESPONSIBILITY TO LOCATE ALL SERVICES THAT MAY BE AFFECTED BY THEIR OPERATIONS.
 - IT IS THE CONTRACTORS RESPONSIBILITY TO LOCATE ANY UNDERGROUND SERVICES PRIOR TO THE COMMENCEMENT OF WORKS.
 - MINIMUM COVER FOR STORMWATER AND WASTEWATER SERVICES SHALL BE 600MM
 - MINIMUM COVER FOR UTILITY SERVICES AS SHOWN ON TYPICAL SERVICE TRENCH DETAIL
 - UTILITY SERVICES SHALL BE INSTALLED IN ACCORDANCE WITH PROVIDERS SPECIFICATION.
 - SERVICE TRENCHES UNDER ROADS, ACCESSWAYS AND PATHS SHALL BE HANDFILLED BACKFILLED AND COMPACTED IN 200MM LAYERS.
 - WORK AREAS SHALL BE REINSTATED TO AN EQUAL STANDARD BEFORE WORK STARTED.
 - UTILITY SERVICES SHALL MAINTAIN MINIMUM CLEARANCES TO STORMWATER AND WASTEWATER ASSETS.

- LEGEND**
- EX BDY
 - PROP BDY
 - STAGE BOUNDARY
 - EX TELECOM
 - EX POWER
 - EX GAS
 - EX WATER SUPPLY
 - EX WATER SUPPLY
 - RR STORMWATER
 - RR WASTEWATER
 - RR WASTEWATER RISING MAIN
 - RR TRENCH CROSSING
 - RR TRENCH TYPE 1
 - RR TRENCH TYPE 2
 - RR WW PUMP STATION

B	FOR CONSENT	DP	03/26
A	FOR REVIEW	JAD	12/2025
Rev	Description	By	Date
	Survey	M/AVEN	05/2025
	Design	JAD	12/2025
	Drawn	JAD	12/2025
	Checked	CS	12/2025

Maven Bay of Plenty
M A E N
 111 Cameron Street, Tauranga
 New Zealand

Project
WAIRAKEI SOUTH FTA090
DEVELOPMENT
BELL ROAD, PAPAMOA
FOR BELL ROAD
LIMITED PARTNERSHIP

Title
PROPOSED
UTILITIES
LAYOUT PLAN

Project no. BOP0749
Scale 1:2000 @ A3
Client file Bopwvs-crowds
Drawing no. C700-11
Rev B



DATE: 5/9/25 FILE PATH: F:\PROJECTS\BOP\909\BELL ROAD\REVISIONS\CD\DESIGN\BOP\909_C700.MXD ORIGINAL SIZE: A3

FOR CONSENT

NOTES

1. ALL WORKS TO BE IN ACCORDANCE WITH WESTERN BAY OF PLENTY DEVELOPMENT CODE.
2. COORDINATES IN TERMS OF BAY OF PLENTY 2000.
3. THE CONTRACTOR SHALL BE RESPONSIBLE TO LOCATE ALL SERVICES THAT MAY BE AFFECTED BY THEIR OPERATIONS.
4. IT IS THE CONTRACTORS RESPONSIBILITY TO LOCATE ANY UNDERGROUND SERVICES PRIOR TO THE COMMENCEMENT OF WORKS.
5. MINIMUM COVER FOR STORMWATER AND WASTEWATER SHALL BE:
6. MINIMUM COVER FOR UTILITY SERVICES AS SHOWN IN THIS SERVICE TRENCH SHALL BE TAKEN IN ACCORDANCE WITH PROVIDERS SPECIFICATION.
7. SERVICE TRENCHES UNDER ROADS, ACCESSWAYS AND PATHS SHALL BE HADFILLED BACKFILLED AND COMPACTED IN 200MM LAYERS.
8. WORK AREAS SHALL BE REINSTATED TO AN EQUAL STANDARD BEFORE WORK STARTED.
9. UTILITY SERVICES SHALL MAINTAIN MINIMUM CLEARANCES TO STORMWATER AND WASTEWATER ASSETS.

LEGEND

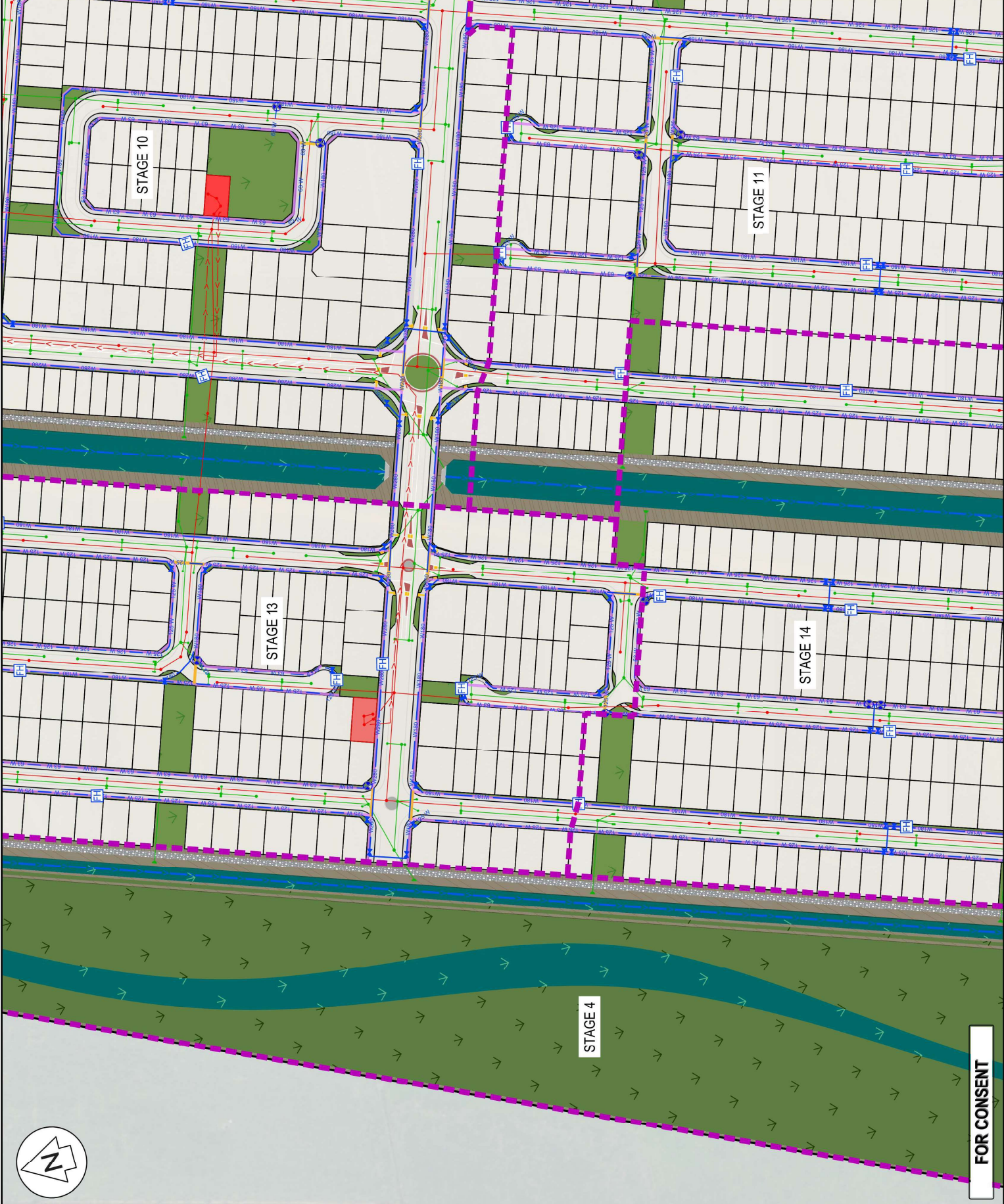
	EX B'DY
	PROP B'DY
	STAGE BOUNDARY
	EX TELECOM
	EX POWER
	EX GAS
	EX WATER SUPPLY
	EX STORMWATER
	RR WASTEWATER
	RR WASTEWATER RISING MAIN
	RR TRENCH CROSSING
	RR TRENCH TYPE 1
	RR TRENCH TYPE 2
	RR WW PUMP STATION

FOR CONSENT	DP	03/26	
FOR REVIEW	JAD	12/20/25	
Rev	Description	By	Date
	Survey	MAVEN	05/20/25
	Design	JAD	12/20/25
	Drawn	JAD	12/20/25
	Checked	CS	12/20/25

Maven Bay of Plenty
 111 Cameron Street, Tauranga
 www.maven.co.nz

Project
WAIRAKEI SOUTH FTA090
DEVELOPMENT
BELL ROAD, PAPAMOA
FOR BELL ROAD
LIMITED PARTNERSHIP

Title		PROPOSED UTILITIES LAYOUT PLAN
Project no.	BOP0749	
Scale	1:2000 @ A3	
Client file	Bopwpc-crowds	
Drawing no.	C700-9	Rev B



FOR CONSENT

- NOTES:**
1. ALL WORKS TO BE IN ACCORDANCE WITH WESTERN BAY OF PLENTY DEVELOPMENT CODE.
 2. CO-ORDINATES IN TERMS OF BAY OF PLENTY 2000.
 3. REDUCED LEVELS ARE IN TERMS OF NVD 2016. IT IS THE CONTRACTORS RESPONSIBILITY TO LOCATE ALL SERVICES THAT MAY BE AFFECTED BY THEIR OPERATIONS.
 4. IT IS THE CONTRACTORS RESPONSIBILITY TO LOCATE ANY UNDERGROUND SERVICES PRIOR TO THE COMMENCEMENT OF WORKS.
 5. WASTEWATER SHALL BE INSTALLED ON TYPICAL SERVICE TRENCH DETAIL.
 6. MINIMUM COVER FOR UTILITY SERVICES AS SHOWN ON TYPICAL SERVICE TRENCH DETAIL.
 7. UTILITY SERVICES SHALL BE INSTALLED IN ACCORDANCE WITH PROVIDERS SPECIFICATION, AND PATHS SHALL BE HANDLID BARKLINED AND COMPACTED IN 200MM LAYERS.
 8. SERVICE TRENCHES UNDER ROADS, ACCESSWAYS AND PATHS SHALL BE HANDLID BARKLINED AND COMPACTED IN 200MM LAYERS.
 9. WORK AREAS SHALL BE REINSTATED TO AN EQUAL STANDARD BEFORE WORK STARTED.
 10. UTILITY SERVICES SHALL MAINTAIN MINIMUM CLEARANCES TO STORMWATER AND WASTEWATER ASSES.

- LEGEND**
- EX B'DY
 - PROP B'DY
 - STAGE BOUNDARY
 - EX TELECOM
 - EX POWER
 - EX GAS
 - EX WATER SUPPLY
 - PR STORMWATER
 - PR WASTEWATER
 - RR WASTEWATER
 - RR WASTEWATER RISING MAIN
 - RR TRENCH CROSSING
 - RR TRENCH TYPE 1
 - RR TRENCH TYPE 2
 - RR WW PUMP STATION

B	FOR CONSENT	DP	03/26
A	FOR REVIEW	JAD	12/2025
Rev	Description	By	Date
		MAVEN	05/2025
		JAD	12/2025
		JAD	12/2025
		CS	12/2025

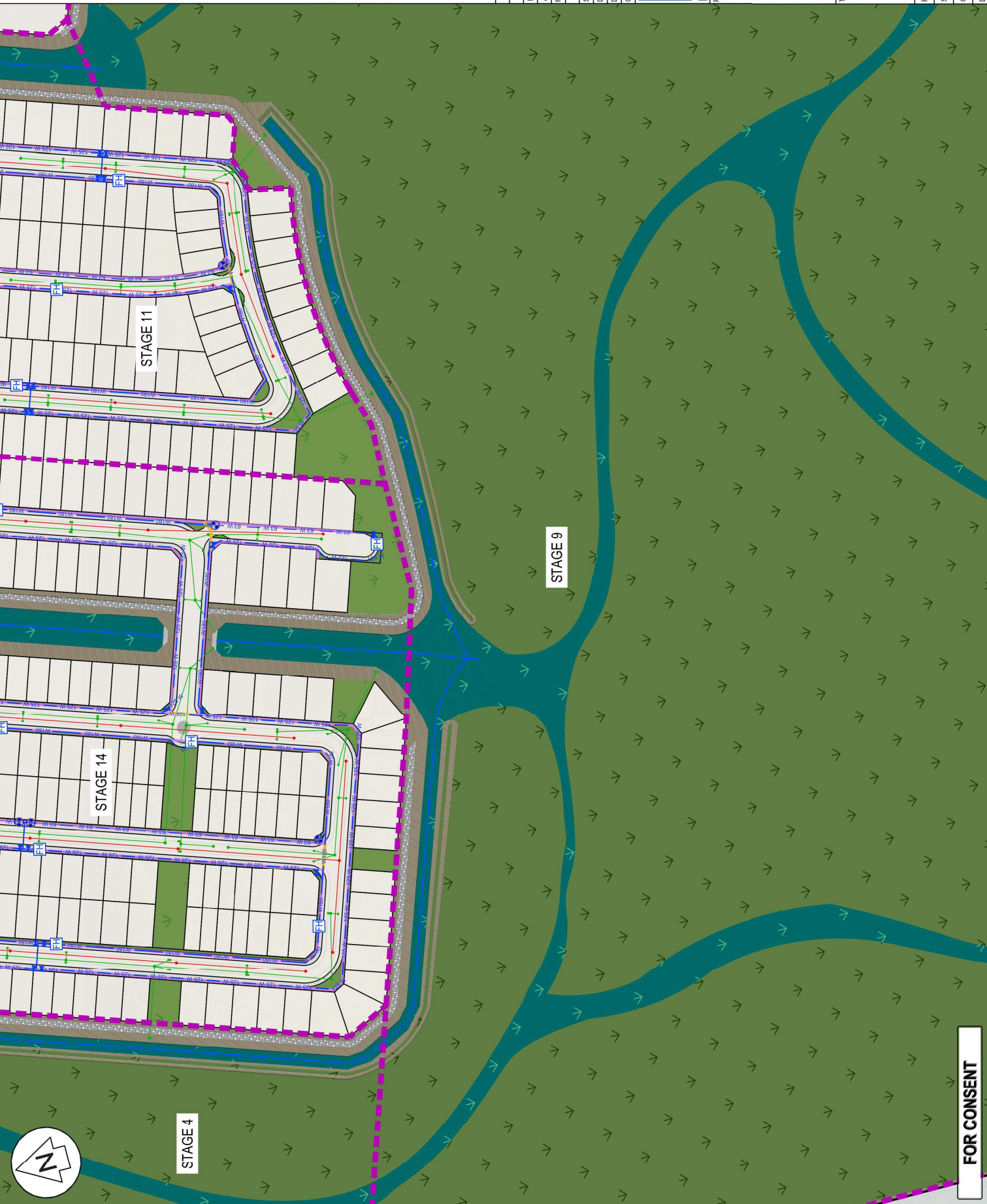
Maven Bay of Plenty
 111 Cameron Street, Tauranga
 www.maven.co.nz

Project
WAIRAKEI SOUTH FTA090
DEVELOPMENT
BELL ROAD, PAPAMOA
FOR BELL ROAD
LIMITED PARTNERSHIP

Title
PROPOSED
UTILITIES
LAYOUT PLAN

Project no. BOP0749
Scale 1:2000 @ A3
Client file BOP09-CRO-DWS
Drawing no. C700-10

Rev **B**



ORIGINAL SIZE: A3

FOR CONSENT